



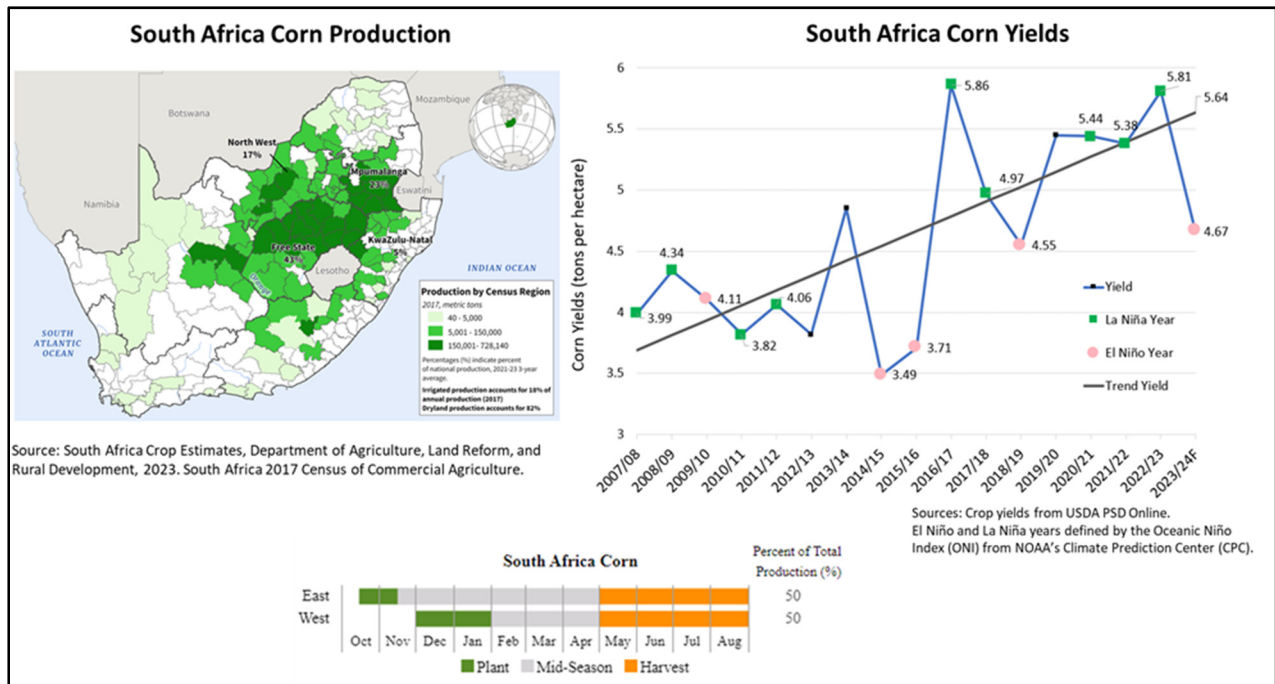
United States
Department of
Agriculture

Foreign
Agricultural
Service

Circular Series
WAP 4-24
April 2024

World Agricultural Production

South Africa Corn: El Niño Induced Drought in February Reduced Production Prospects



South Africa's marketing year (MY) 2023/24 corn production is estimated at 14.0 million metric tons (mmt), down 1.5 mmt (10 percent) from last month, down 3.1 mmt (18 percent) from last year, and down 10 percent from the five-year average. The USDA production estimate includes output from both developing and commercial sectors, with the commercial sector accounting for approximately 96 percent of the total crop. Harvested area is estimated at 3.0 million hectares, unchanged from last month, but up two percent from last year. Yield is estimated at 4.67 metric tons per hectare, down 10 percent from last month, down 20 percent from last year, and down 12 percent from the five-year average. Yields are below average due to El Niño induced dry spells and heat waves in February and early March when the crop was in early grain-filling stages.

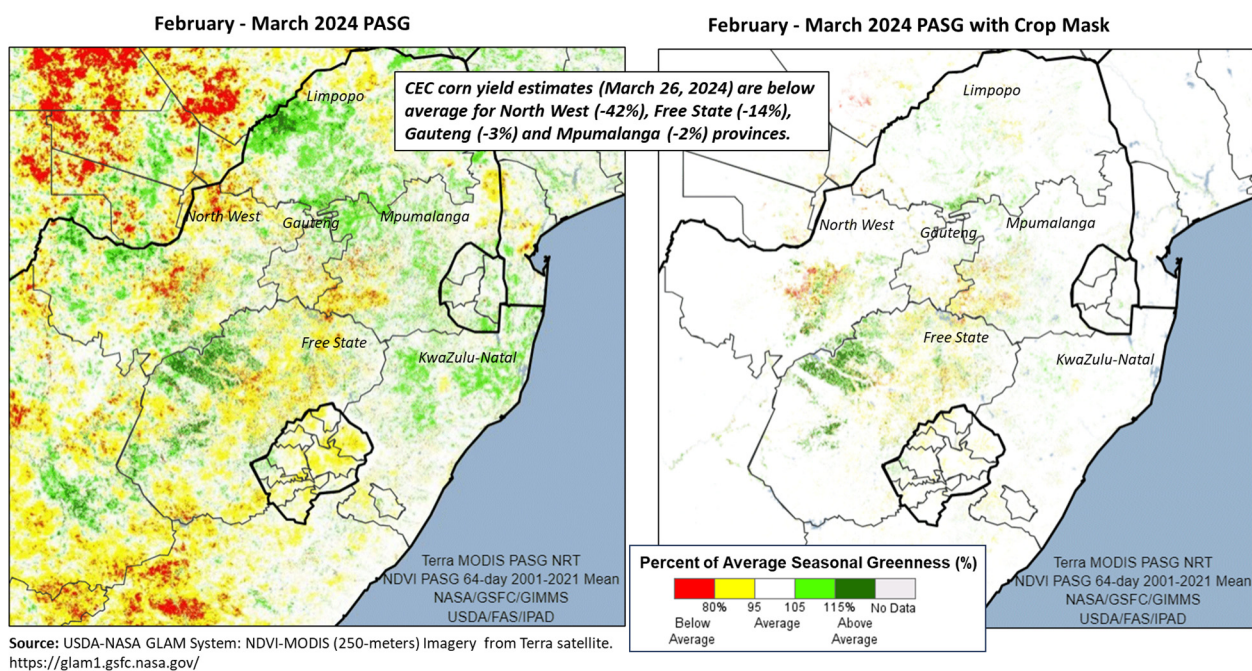
Rains were below average in November which delayed planting, but above-average rains in December and January allowed most crops to be planted within the optimal planting window. Crop conditions were favorable in early February, but a three-week long dry spell from mid-February through early March occurred during early grain-filling stages and reduced production prospects for the season. The South Africa Crop Estimates Committee (CEC) reported on March 26 that crop yields were below the five-year average, but the severity of the declines vary by

Approved by the World Agricultural Outlook Board

provinces, key examples being North West (42 percent below the five-year average), Free State (14 percent), Gauteng (3 percent), and Mpumalanga (2 percent).

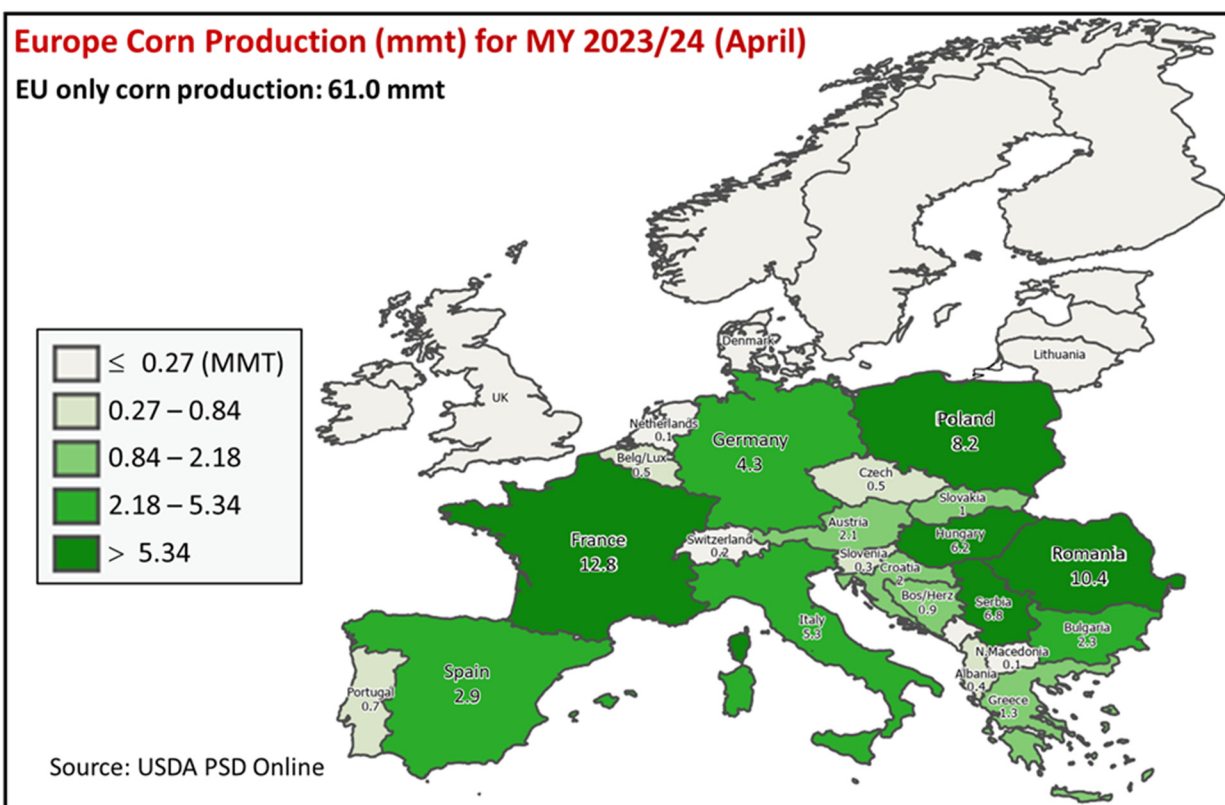
FAS personnel visited South Africa’s primary producing provinces in early March and interviewed representatives from the major grain cooperatives. Crop analysts from the cooperatives reported that dry spells and heat waves from early February reduced yield potential and grain quality, and crop conditions in North West province were observed to be well below average compared to other provinces. Percent of Average Seasonal Greenness (PASG) and Normalized Difference Vegetation Index (NDVI) also indicated potential yields for all primary producing provinces are below average, with North West province having the highest percent yield drop from the five-year average.

Two-Month Percent of Average Seasonal Greenness (PASG) from February 2 – April 5, 2024

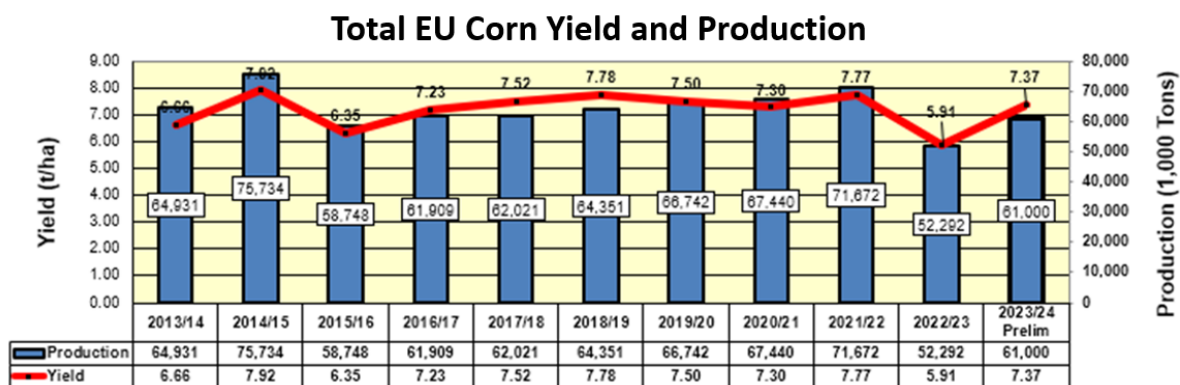


South Africa’s primary corn producing provinces in rank order of estimated production for MY 2023/24 include: Free State (43 percent of total production), Mpumalanga (23 percent), North West (17 percent), and KwaZulu-Natal (5 percent). The planting season in the east is from late October through November, and the planting season in the west is from late November to early January. South African farmers will harvest the corn crop from April through September and the bulk of the harvest (87 percent) is typically delivered to the silos from May through August. *(For more information, please contact Curt.Reynolds@usda.gov.)*

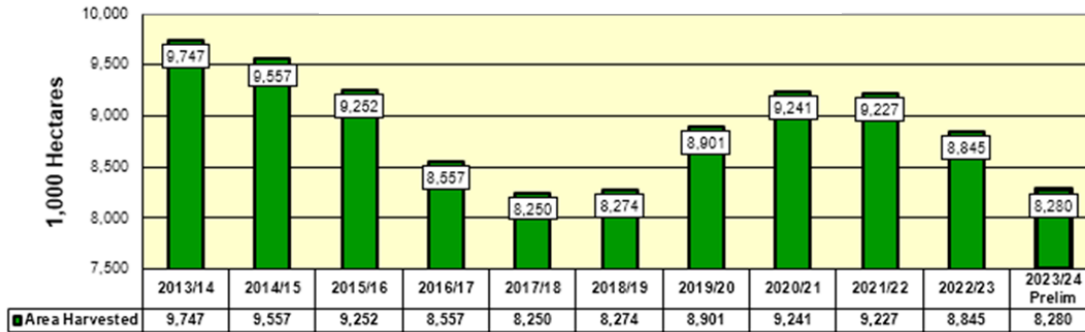
European Union Corn: Production Raised on Harvest Results



Corn production in the European Union (EU) for marketing year (MY) 2023/24 is estimated at 61.0 million metric tons (mmt), up 0.9 mmt (2 percent) from last month, up 8.7 mmt (17 percent) from last year, but 5 percent below the 5-year average. Harvested area is estimated at 8.3 million hectares, unchanged from last month, but 6 percent below last year and 7 percent below the 5-year average. Yield is estimated at 7.37 tons per hectare (t/ha), slightly up from last month's 7.26 t/ha and the 5-year average of 7.25 t/ha.



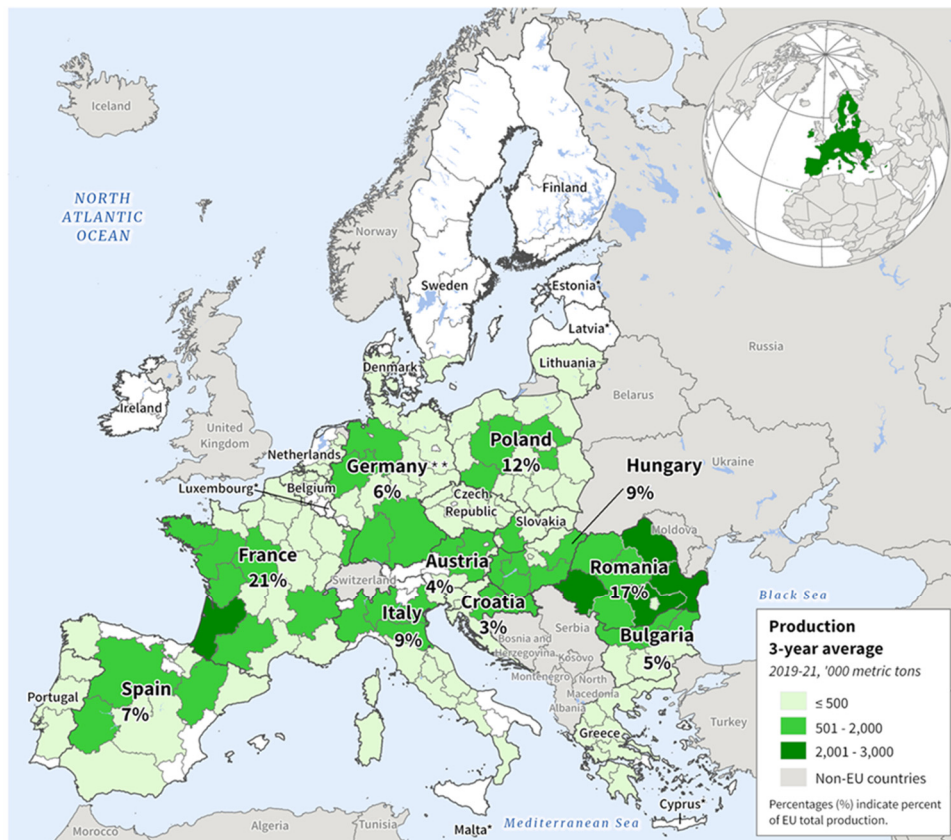
Total EU Corn Area



Source: USDA PSD Online

The latest data from around the EU has led to an increase in the MY 2023/24 production estimate. The largest changes include increases of 0.6 mmt to Hungary, 0.5 mmt to Poland, and 0.4 mmt to Spain, while the largest reductions were made to both Romania and Slovakia, each by 0.3 mmt. The MY 2023/24 summer season saw a wide range of weather conditions, but the dominant, crop-affecting events were drought and extreme heat that were concentrated in Spain and southeast Europe. Final estimates and harvest reports are still being released by national agricultural ministries as official counts continue being tallied. Although the MY 2023/24 crop is significantly higher than the very poor MY 2022/23 harvest, overall production remains well below average.

European Union (EU) Corn Production



USDA Foreign Agricultural Service
U.S. DEPARTMENT OF AGRICULTURE

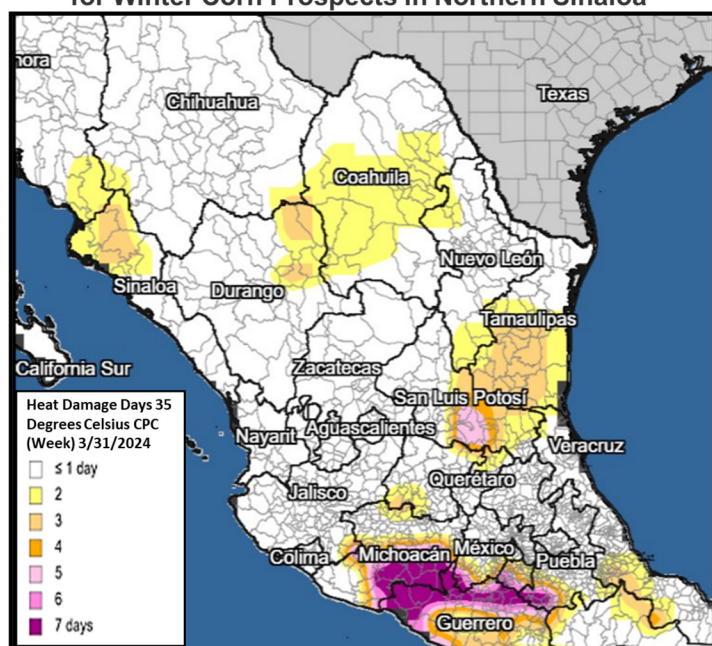
Source: Eurostat by Nomenclature of Territorial Units for Statistics (NUTS) 2 region, with exceptions indicated by * (NUTS 0/country-level data), or ** (NUTS 1 region)

For country-specific area, yield, and production estimates within the European Union (EU), please go to PSD Online at <https://apps.fas.usda.gov/PSDOnline/app/index.html#/app/home>, and select “Downloadable Data Sets.” Select the zipped file for “EU Countries Area & Production.”
(For more information, please contact Bryan.Purcell@usda.gov.)

Mexico Corn: Heat Damage and Continued Dryness Reduces Winter Crop Prospects

USDA estimates Mexico’s marketing year 2023/24 corn production at 23.3 million metric tons, down 3 percent from last month and down 17 percent from last year. Harvested area is estimated at 6.1 million hectares (mha), unchanged from last month, but down 11 percent from last year. Yield is estimated at 3.82 metric tons per hectare (t/ha), down 3 percent from last month, and down 6 percent from last year.

Heat Damage Days (35 Degrees C) Causing Concern for Winter Corn Prospects in Northern Sinaloa



Source: NOAA Climate Prediction Center (CPC) Temperature Data



Mexico – Crop Calendar



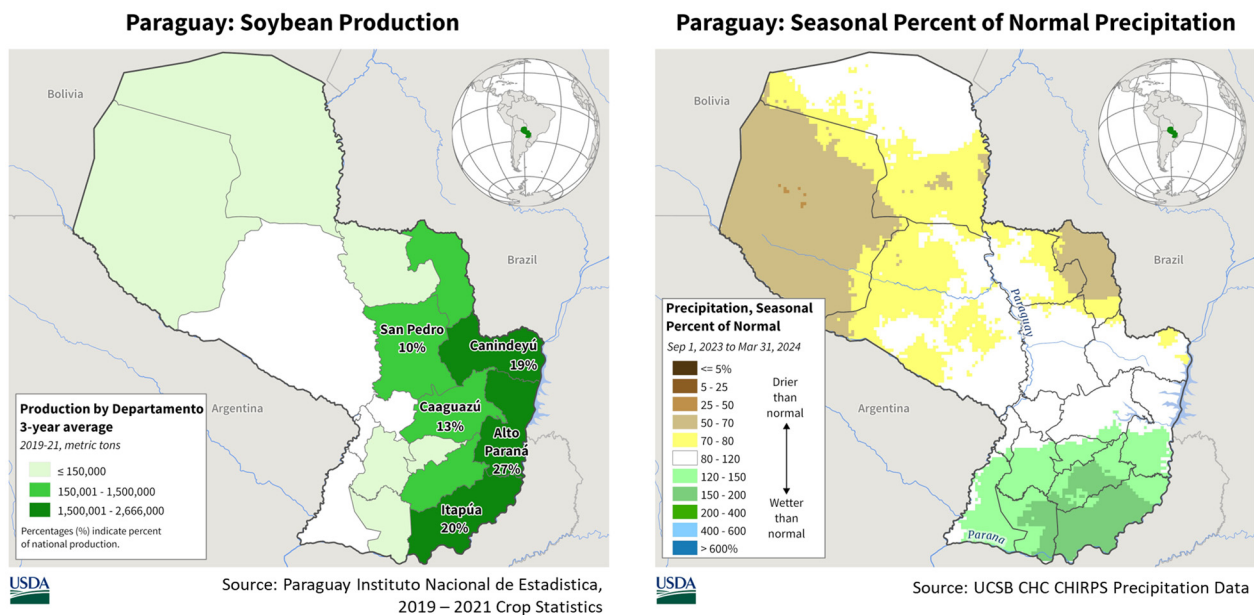
Corn can withstand a temperature threshold between 5° Celsius and 35° Celsius before being negatively impacted. Extended exposure further exacerbates the impact to corn prospects.

Mexico corn is planted in two seasons, spring/summer (main) followed by fall/winter, with the bulk of the production occurring in the main season, at 70 percent. The main corn season relies predominantly on rainfall for crop development. Rainfall for the 2023 main corn crop underperformed throughout the rainy season (April through October). As a result, harvested corn area for the main season was one of the lowest on record.

The winter season corn crop, predominantly irrigated, has experienced water supply shortages caused by the drier-than-normal wet season. As a result, the winter corn planting pace continues to be one of the slowest planting periods on record. In mid-March 2024, FAS/Washington and FAS/Mexico City travelled to Sinaloa, the main winter corn state accounting for 68 percent of production. Corn field assessments were done for Sinaloa’s top two municipalities, Los Mochis and Culiacán, which accounts for 50 percent of Sinaloa’s winter corn production. Field assessments validated crop conditions that were documented by meeting with farmers,

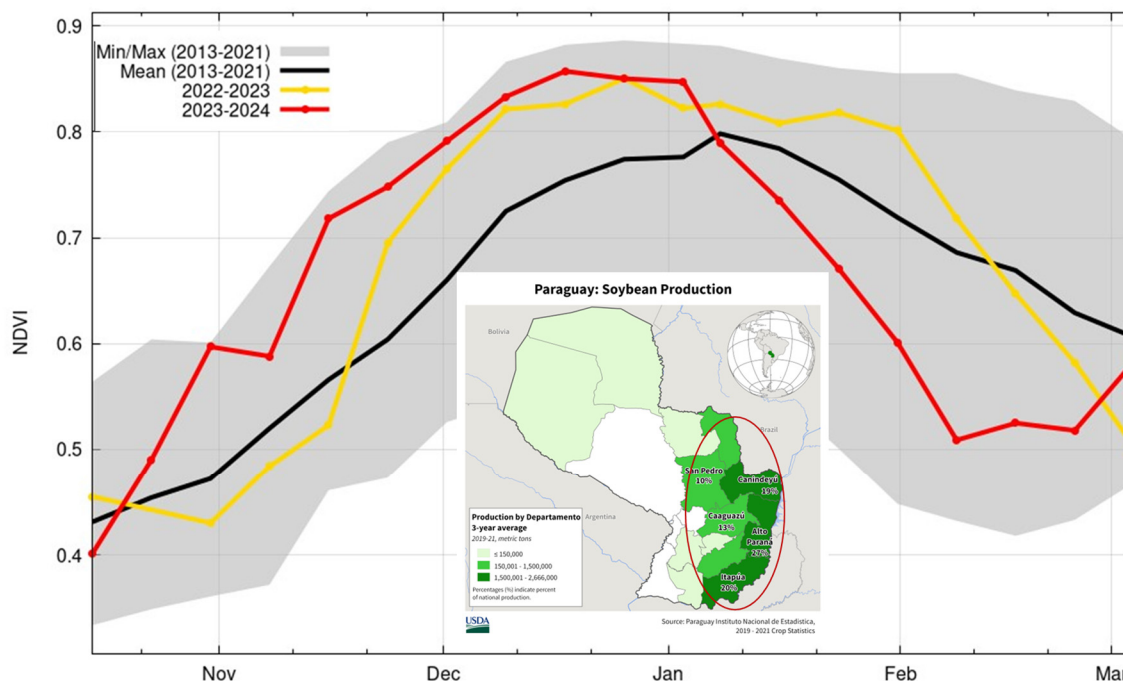
cooperators, and millers. Multiple sources explained that this was the worst season since 2011 due to the lack of water supply. Less water availability led farmers, who on average use four cycles of water to irrigate the corn crop, only being allocated enough water to accommodate three cycles. Extreme heat and dry weather during the end of March further exacerbated the corn conditions, which led to a reduction in winter corn prospects. In Sinaloa, corn yields are lower than expected, however, the reduced water for the three irrigations will likely produce yields of 10 t/ha. Sinaloa typically has the highest corn yields in Mexico. *(For more information, please contact Justin.Jenkins@usda.gov.)*

Paraguay Soybeans: Production Up Due to Favorable Conditions During the Growing Season



Paraguay soybean production for marketing year 2023/24 is estimated at 10.5 million metric tons, up 2 percent from last month, and up 4 percent from last year. Yield is estimated at 2.95 tons per hectare, up 2 percent from last month, and up 6 percent from last year. Harvested area is estimated at 3.56 million hectares, up slightly from last month, but down 1 percent from last year.

MODIS NDVI 8-Day Over the Main Soybean Growing Regions



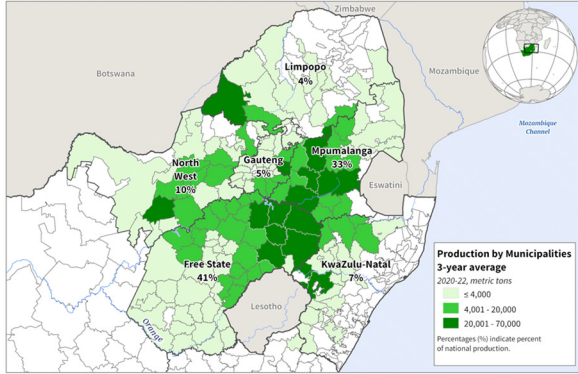
Source: USDA/NASA, MODIS NDVI; University of Maryland GLAD soybean crop mask

Paraguay’s main soybean season is planted from September through November and harvested from December through March. Normal to above-normal rainfall occurred during the growing season for the key soybean areas. Additionally, crop conditions depicted through the satellite-derived MODIS Normalized Difference Vegetation Index (NDVI) highlights the above average conditions during the growing season. *(For more information, please contact Katie.McGaughey@usda.gov.)*

South Africa Soybeans: Production Prospects Reduced by El Niño Induced Drought

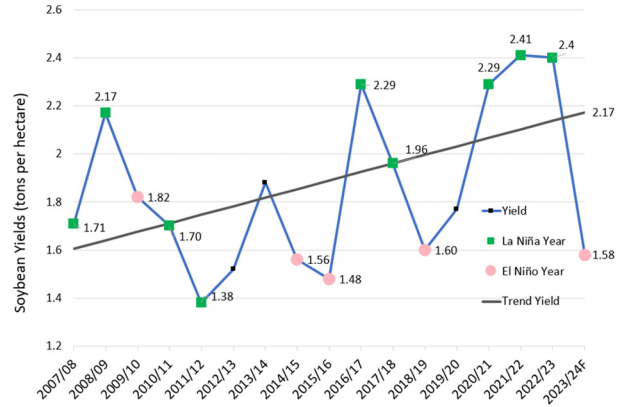
South Africa’s marketing year (MY) 2023/24 soybean production is estimated at 1.82 million metric tons (mmt), down 0.3 mmt (15 percent) from last month, down 0.9 mmt (34 percent) from last year, and 2 percent below the five-year average. Area is estimated at a record 1.15 million hectares, up 25,000 thousand hectares (2 percent) from last month, nearly the same as last year, and up 33 percent from the five-year average. Yield is estimated at 1.58 metric tons per hectare, down 17 percent from last month, down 34 percent from last year, and down 25 percent from the five-year average. Yields are well below average due to El Niño induced dry spells and heat waves in February when the crop was in early pod-filling stages.

South Africa Soybean Production



Source: South Africa Crop Estimates, Department of Agriculture, Land Reform, and Rural Development, 2023. South Africa 2017 Census of Commercial Agriculture.

South Africa Soybean Yields



Sources: Crop yields from USDA PSD Online. El Niño and La Niña years defined by the Oceanic Niño Index (ONI) from NOAA's Climate Prediction Center (CPC).

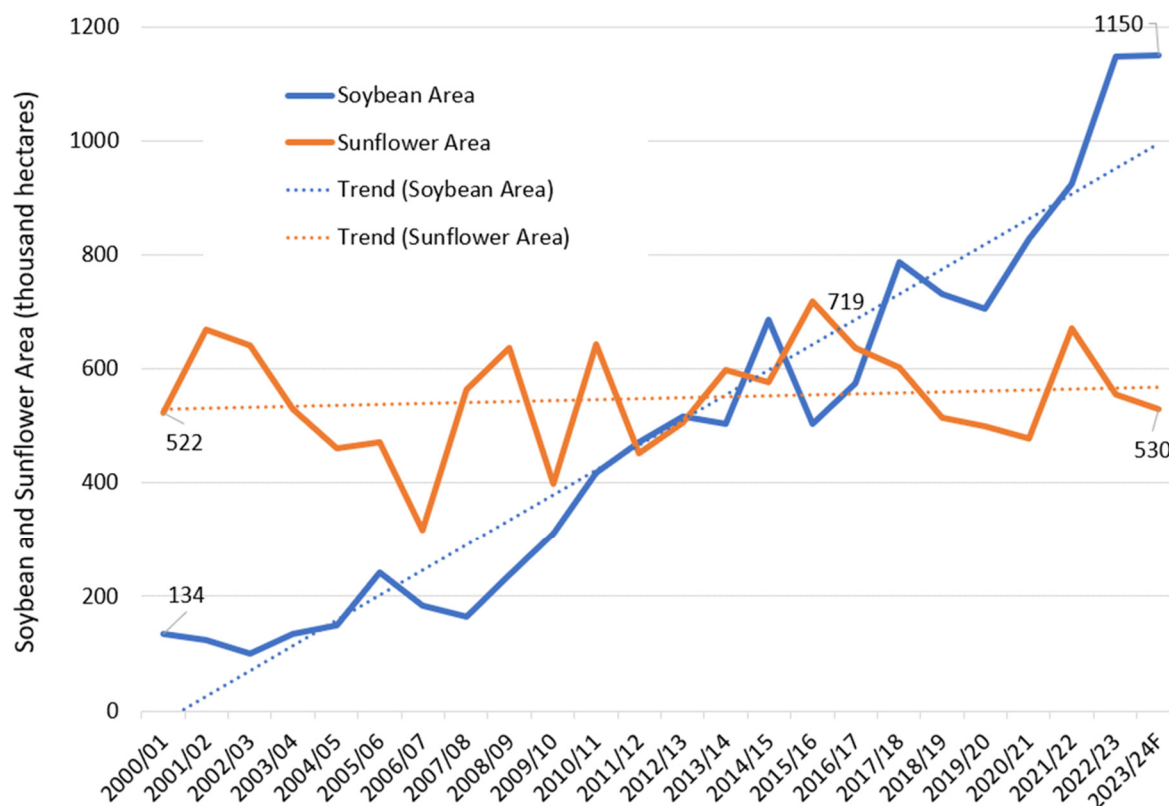
South Africa Soybean



Soybean area has grown by nearly one million hectares during the past 20 years because producers realized the benefits in using soybeans as a rotational crop with corn and improved soybean varieties started to perform well in different agro-climates in South Africa. In addition, soybean processing plants have increased in recent years because investors were motivated to build more due to increased local demand for soybean products.

FAS personnel visited South Africa’s primary producing provinces in early-March and interviewed representatives from the major grain cooperatives. Crop analysts from the cooperatives reported that dry spells and heat waves from early February reduced yield potential and quality. They also mentioned that better price returns from soybeans compared to sunflowerseed encouraged South Africa farmers to plant a record soybean area even though a strong El Niño drought was forecasted. Sunflowerseed is thought to be more drought resistant during El Niño years, but producers continued to plant more soybeans during this El Niño year because December planting rains arrived on time and did not cause major planting delays. In contrast, planting rains were delayed during the 2015/16 El Niño which motivated producers to plant less soybeans and a near record sunflowerseed area of 719,000 ha.

South Africa Soybean and Sunflowerseed Area



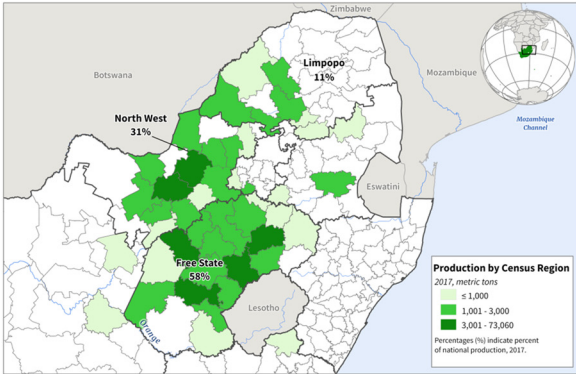
Source: USDA PSD Online

South Africa's primary soybean producing provinces in rank order of estimated production for MY 2023/24 include the key examples of Free State (41 percent of total production), Mpumalanga (33 percent), North West (10 percent), KwaZulu-Natal (7 percent) and Limpopo (4 percent). The planting season is from mid-October through mid-December, and the harvest season is from mid-April through June. *(For more information, please contact Curt.Reynolds@usda.gov.)*

South Africa Sunflowerseed: El Niño Induced Drought Reduced Production Prospects

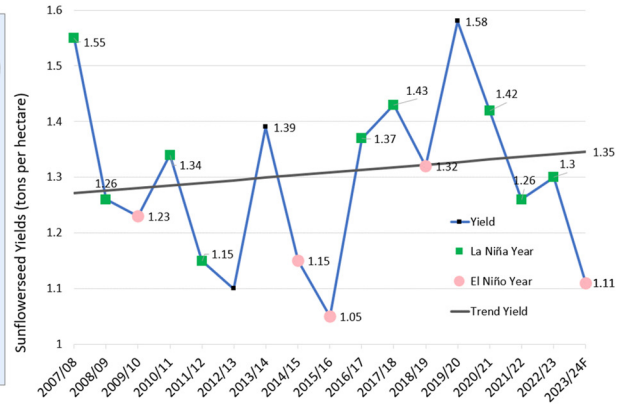
South Africa's marketing year (MY) 2023/24 sunflowerseed production is estimated at 590,000 metric tons (mt), down 80,000 mt (12 percent) from last month, down 134,000 mt (19 percent) from last year, and down 153,000 mt (21 percent) from the five-year average. Harvested area is estimated at 530,000 hectares (ha), down 85,000 ha (14 percent) from last month and down 26,000 ha (5 percent) from last year. Yield is estimated at 1.11 metric tons per hectare, nearly equal to last month, but down 15 percent from last year, and down 19 percent from the five-year average. Yields are well below average due to El Niño induced dry spells and heat waves, which occurred during late February and early March.

South Africa Sunflowerseed Production



Source: South Africa Crop Estimates, Department of Agriculture, Land Reform, and Rural Development, 2023. South Africa 2017 Census of Commercial Agriculture.

South Africa Sunflowerseed Yields



Sources: Crop yields from USDA PSD Online. El Niño and La Niña years defined by the Oceanic Niño Index (ONI) from NOAA's Climate Prediction Center (CPC).

South Africa Sunflowerseed



FAS personnel visited South Africa’s primary producing provinces in early-March and interviewed representatives from the major grain cooperatives. Crop analysts from the cooperatives reported that dry spells and heat waves from early February reduced yield potential and quality. They also mentioned that sunflowerseed area has nearly been the same for the past 20 years and sunflowerseed yields have not increased like corn and soybeans which is limiting profits and interest in the sunflower crop.

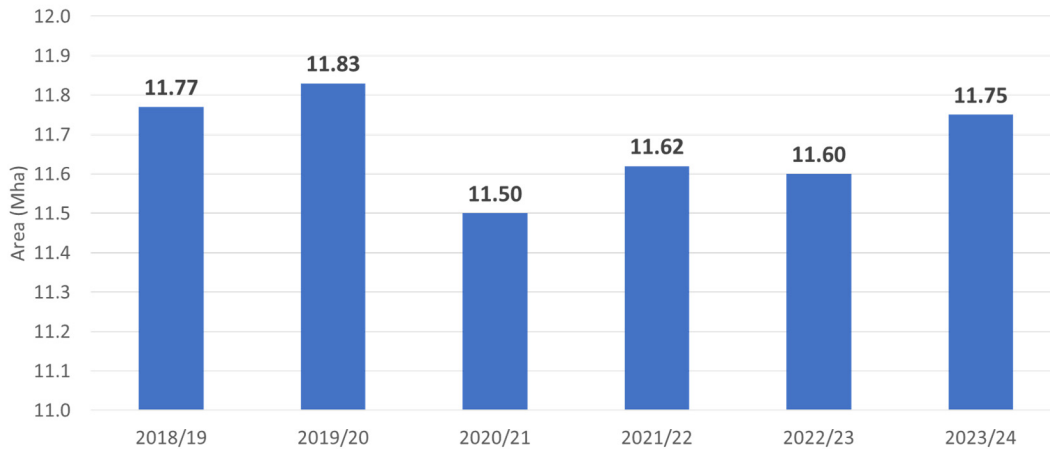
Sunflowerseed is thought to be more drought resistant during El Niño years, but producers continued to plant more soybeans than sunflowerseed this year because December planting rains arrived on time and did not cause major planting delays. In contrast, planting rains were delayed during the 2015/16 El Niño which motivated producers to plant less soybeans and plant a near record sunflowerseed area during MY 2015/16.

South Africa’s primary sunflowerseed producing provinces in rank order of estimated production for MY 2023/24 include the key examples of Free State (58 percent of total production), North West (31 percent), and Limpopo (11 percent). The planting season is from November through mid-January, and the harvest season is from April through June. *(For more information, please contact Curt.Reynolds@usda.gov.)*

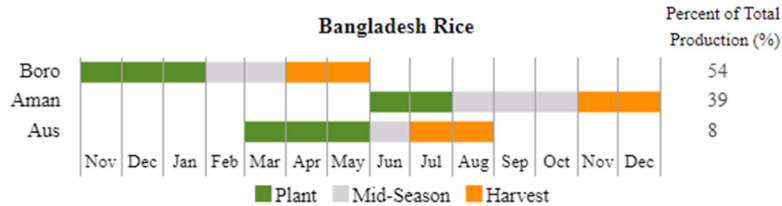
Bangladesh Rice: Production Revised Up

USDA estimates marketing year (MY) 2023/24 Bangladesh rice production at 37.0 million metric tons (milled basis), up about 2 percent from last year due to a slight increase in planted area. Harvested area is estimated at 11.75 million hectares, up slightly from last month. Rough yield is estimated at 4.72 metric tons per hectare, slightly higher than a year ago.

Bangladesh: MY 2023/24 Rice Area Revised Up



Source: USDA PSD Online

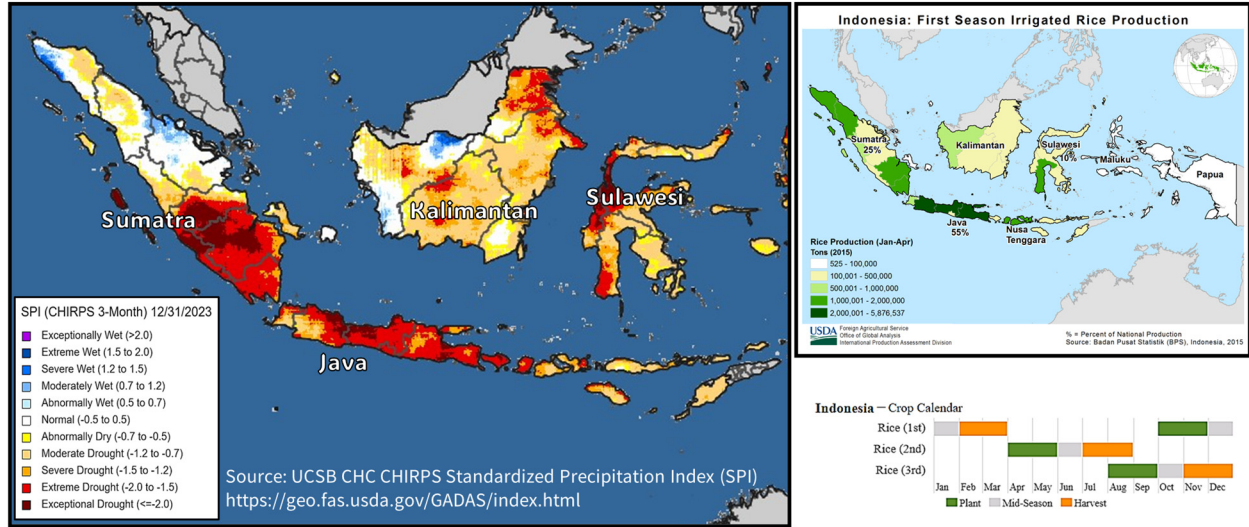


Rice is grown throughout the year. The *boro* season, which accounts for about 54 percent of total production, is irrigated. The *aus* and *aman* crops are dependent on monsoon rains. The *aus*, which accounts for 8 percent of the total output, was down due to lower rainfall, and a heat wave hampered *aus* rice cultivation in the country. The delayed monsoons in July also impacted the *aman* crop, causing seedbeds to be planted late. Farmers had to use irrigation during the dry period of the *aman* season, which negated losses during the *aus* period. The MY 2023/24 rice crop was harvested in late November. (For more information, please contact Arnella.Trent@usda.gov.)

Indonesia Rice: Dryness Reduces Rice Area Forecast

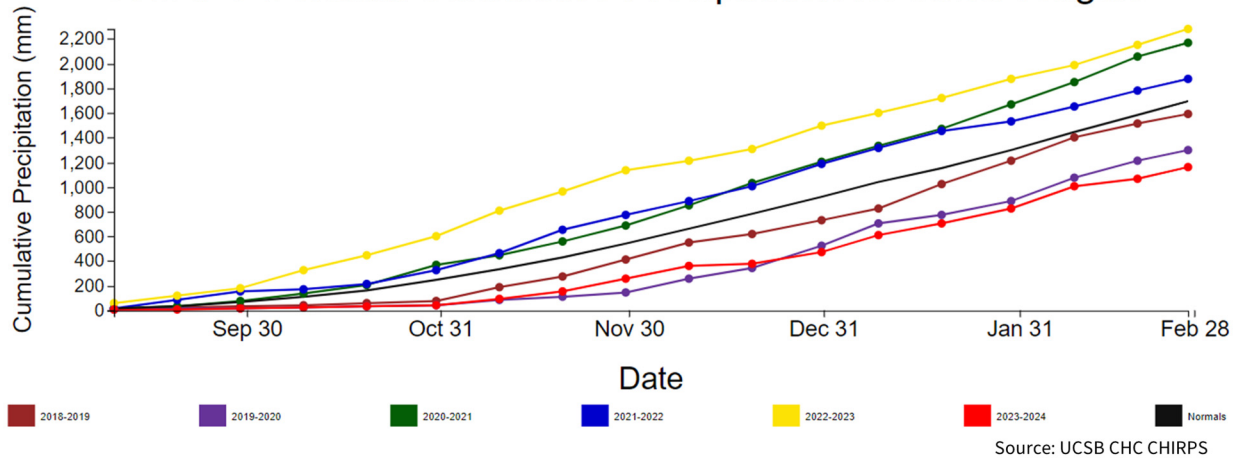
USDA forecasts Indonesia marketing year (MY) 2023/24 rice production at 33.0 million metric tons (milled basis), down 1 percent from last month and down 3 percent from last year. Harvested area is forecast at 11.0 million hectares, down 3 percent from last month and from last year. Rough yield is forecast at 4.73 tons per hectare (mt/ha), up 1 percent from last month and slightly up from last year.

Observing Seasonal Rainfall using SPI (CHIRPS 3-Month) (Oct. 1, 2023 – Dec. 31, 2023)



Rice in Indonesia is cultivated in three different cycles; the first cycle (main) is cultivated from October to December, during the wet season, and is harvested from February to April. The main rice cycle’s area is 85 percent irrigated and represents about 45 percent of Indonesia total rice output.

CHIRPS Dekadal Cumulative Precipitation for Jawa Tengah



Rice area is forecast to decrease in MY 2023/24 mainly due to ongoing dryness, most notably in the main producing islands of Java, and parts of southern Sumatra. Since mid-August cumulative rainfall has trended at or below last year’s drier-than-normal levels. The delayed onset of the 2023 wet season prevented farmers from starting rice cultivation until November. As a result, farmers opted to plant less water intensive crops, such as corn. With the current rainfall trend, farmers will opt to forego rice cultivation and plant other crops that require less water.

The second and third rice cycles are cultivated in the dry season, which begin cultivation March to June and July to October, respectively. (For more information, please contact Justin.Jenkins@usda.gov.)



**World Agricultural Production
U.S. Department of Agriculture**

Foreign Agricultural Service / Global Market Analysis
International Production Assessment Division (IPAD)
Ag Box 1051, Room 4630, South Building
Washington, DC 20250-1051

<https://ipad.fas.usda.gov/>

Telephone: (202) 720-1662 Fax: (202) 720-1158

This report uses information from the Foreign Agricultural Service’s (FAS) global network of agricultural attachés and counselors, official statistics of foreign governments and other foreign source materials, and the analysis of economic data and satellite imagery. Estimates of foreign area, yield, and production are from the International Production Assessment Division, FAS, and are reviewed by USDA’s Inter-Agency Commodity Estimates Committee. Estimates of U.S. area, yield, and production are from USDA’s National Agricultural Statistics Service. Numbers within the report may not add to totals because of rounding. This report reflects official USDA estimates released in the World Agricultural Supply and Demand Estimates (WASDE-584), April 11, 2024.

Printed copies are available from the National Technical Information Service. Download an order form at http://www.ntis.gov/products/specialty/usda/fas_a-g.asp, or call NTIS at 1-800-363-2068.

The FAS International Production Assessment Division prepared this report. The next issue of World Agricultural Production will be released after 12:00 p.m. Eastern Time, May 10, 2024.

Conversion Table

Metric tons to bushels

Wheat, soybeans	=	MT * 36.7437
Corn, sorghum, rye	=	MT * 39.36825
Barley	=	MT * 45.929625
Oats	=	MT * 68.894438

Metric tons to 480-lb bales

Cotton	=	MT * 4.592917
--------	---	---------------

Metric tons to hundredweight

Rice	=	MT * 22.04622
------	---	---------------

Area & weight

1 hectare	=	2.471044 acres
1 kilogram	=	2.204622 pounds



For further information, contact:
U.S. Department of Agriculture
Foreign Agricultural Service
Global Market Analysis

International Production Assessment Division
 Ag Box 1051, Room 4630, South Building
 Washington, DC 20250-1051

Telephone: (202) 720-1662

Fax: (202) 720-1158

GENERAL INFORMATION

Senior Director	Ronald Frantz	202-720-4056	ronald.frantz@usda.gov
Director	Robert Tetrault	202-720-1071	robert.tetrault@usda.gov
Administrative Assistant	Vacant		
USDA Remote Sensing Advisor	Vacant		
Sr. Analyst/Technical Lead	Curt Reynolds, Ph.D.	202-690-0134	curt.reynolds@usda.gov
Sr. Analyst/ Satellite Imagery Archives Manager/Technical Lead	Dath Mita, Ph.D.	202-720-7339	dath.mita@usda.gov
Sr. Analyst/Technical Lead	Jim Crutchfield	202-690-0135	james.crutchfield@usda.gov
GIS Mapping/Imagery Analyst	Lisa Colson	202-720-6652	lisa.colson@usda.gov
WAP Coordinators	Ifeoma Collins	202-720-0240	ifeoma.collins@usda.gov
	Shannon Moyo		shannon.moyo@usda.gov

COUNTRY- AND REGION-SPECIFIC INFORMATION

South America, Argentina, Venezuela, and Colombia	Katie McGaughey	202-720-9210	katie.mcgaughey@usda.gov
Western and Central Europe, and North Africa	Bryan Purcell	202-690-0138	bryan.purcell@usda.gov
Russia, Ukraine, Kazakhstan, Moldova, and Belarus	Iliana Mladenova, Ph.D.	202-690-2315	iliana.mladenova@usda.gov
South Asia, Sri Lanka Bangladesh, India, and Nepal	Arnella Trent	202-720-0881	arnella.trent@usda.gov
East Asia, China, and Japan	Dath Mita, Ph.D.	202-720-7339	dath.mita@usda.gov
Sub-Saharan Africa, Nigeria and South Africa	Curt Reynolds, Ph.D.	202-690-0134	curt.reynolds@usda.gov
S.E. Asia, Indonesia, Thailand, Malaysia, Cambodia and Vietnam	Justin Jenkins	202-720-0419	justin.jenkins@usda.gov
Central America, Mexico, and Western United States	Ifeoma Collins	202-720-0240	ifeoma.collins@usda.gov
Australia, New Zealand, Pakistan Papua New Guinea and South Pacific Islands	Jim Crutchfield	202-690-0135	james.crutchfield@usda.gov
Middle East, Central Asia, Afghanistan Iraq, Iran, and Syria	Aaron Mulhollen	202-690-0131	aaron.mulhollen@usda.gov
Canada, Caribbean, Eastern United States	Shannon Moyo		shannon.moyo@usda.gov
Brazil	Curt Reynolds, Ph.D.	202-690-0134	curt.reynolds@usda.gov



The Foreign Agricultural Service (FAS) updates its production, supply and distribution (PSD) database for cotton, oilseeds, and grains at 12:00 p.m. on the day the *World Agricultural Supply and Demand Estimates* (WASDE) report is released. This circular is released by 12:15 p.m.

FAS Reports and Databases:

World Agricultural Production

Current: <https://www.fas.usda.gov/data/world-agricultural-production>

Archive: <https://usda.library.cornell.edu/concern/publications/5q47rn72z?locale=en>

USDA's Foreign Agricultural Service (FAS) publishes a monthly report on crop acreage, yield and production in major countries worldwide. Sources include reporting from FAS's worldwide offices, official statistics of foreign governments, and analysis of economic data and satellite imagery. The reports reflect official USDA estimates released in the monthly *World Agricultural Supply and Demand Estimates* (WASDE).

World Markets and Trade

Current: <https://www.fas.usda.gov/data>

Archive:

https://usda.library.cornell.edu/catalog?f%5Bmember_of_collections_ssim%5D%5B%5D=Foreign+Agricultural+Service&locale=en

USDA's Foreign Agricultural Service (FAS) publishes monthly and quarterly reports which include data on U.S. and global trade, production, consumption and stocks, as well as analysis of developments affecting world trade in oilseeds, grains, cotton, livestock and poultry. The reports reflect official USDA estimates released in the monthly *World Agricultural Supply and Demand Estimates* (WASDE).

Global Agricultural Information Network (GAIN)

<https://gain.fas.usda.gov/>

USDA's Foreign Agricultural Service (FAS) provides timely reports on foreign markets through the Global Agriculture Information Network (GAIN) database. An average of 2,000 reports are added each year, with reports going back to 1995. GAIN reports are compiled by FAS' global market intelligence network, which includes FAS foreign service officers and locally engaged staff in over 90 overseas offices world-wide. They provide on-the-ground intelligence, insight, and analysis on nearly 200 countries, delivering information on foreign agricultural markets, crop conditions, and agro-political dynamics of interest to U.S. agriculture. GAIN reports contain assessments of commodity and trade issues made by USDA staff and are not necessarily statements of official U.S. government policy.

Production, Supply and Distribution (PS&D) Online

<https://apps.fas.usda.gov/psdonline/app/index.html#/app/home>

PSD Online is the public repository for USDA's Official Production, Supply and Distribution forecast data and reports for key agricultural commodities. PSD Online data are reviewed and updated monthly by an interagency committee chaired by USDA's World Agricultural Outlook Board (WAOB). The committee consist of representatives from Foreign Agricultural Service (FAS), the Economic Research Service (ERS), the Farm Service Agency (FSA), and the Agricultural Marketing Service (AMS).

EU Countries and Russia Wheat: Area and Production Estimates

<https://apps.fas.usda.gov/psdonline/app/index.html#/app/downloads> (click on PSD Datasets)

USDA's Foreign Agricultural Service (FAS) provides country-level area and production estimates for the nations of the European Union. For Russia, country-level area and production estimates are provided for Winter and Spring wheat. These datasets are reviewed and updated monthly by an interagency committee chaired by USDA's World Agricultural Outlook Board (WAOB) and can be downloaded through PSD datasets on PSD Online.



FAS Reports and Databases:

International Production Assessment (IPAD)

<https://ipad.fas.usda.gov/>

USDA's Foreign Agricultural Service (FAS) maintains a dynamic global crop production portal with key information including *World Agricultural Production* (WAP) briefs, Commodity Intelligence Reports (CIR), geospatial applications, crop production maps at a subnational level and crop calendars for the top-20 producing countries. Additionally, Crop Explorer (<https://ipad.fas.usda.gov/cropexplorer/>) displays rainfall, temperature, evapotranspiration, soil moisture, snow cover, and vegetation conditions in charts and maps.

USDA and NASA Global Agricultural Monitoring (GLAM)

<https://glam1.gsfc.nasa.gov/>

The USDA and NASA Global Agricultural Monitoring (GLAM) system provides near real-time and science quality Moderate Resolution Imaging Spectroradiometer (MODIS) Normalized Difference Vegetation Index (NDVI) from the satellites Terra and Aqua. The public can view and retrieve MODIS 8-day composited, global NDVI satellite imagery and time series data. GLAM was developed by NASA's Global Inventory Modeling and Mapping Studies (GIMMS) group for USDA's Foreign Agricultural Service.

Global Agricultural and Disaster Assessment System (GADAS)

<https://geo.fas.usda.gov/GADAS/index.html>

USDA's Foreign Agricultural Service (FAS) provides the Global Agricultural and Disaster Assessment System (GADAS), a web-based Geographic Information System (GIS) tool which integrates a vast array of highly detailed earth observation data streams, particularly targeted towards agricultural and disaster assessment analysis. GADAS is an interactive website which provides analysts with a wide variety of routine geospatial products (maps, charts, tables) they require for comprehensive situational investigations and recurring assessments.

Export Sales Reporting

<https://apps.fas.usda.gov/esrquery/>

USDA's Export Sales Reporting Program monitors U.S. agricultural export sales on a daily and weekly basis. Export sales reporting provides a constant stream of up-to-date market information for 40 U.S. agricultural commodities sold abroad. The weekly U.S. Export Sales report is the most currently available source of U.S. exports sales data. The data is used to analyze overall levels of export demand, determine where markets exit, and assess the relative position of U.S. commodities in foreign markets.

Global Agricultural Trade System (GATS)

<https://apps.fas.usda.gov/gats/default.aspx>

The Global Agricultural Trade System (GATS) is a searchable database containing monthly U.S. Census Bureau trade data organized by agricultural commodity and agricultural related product groups. Trade data is searchable by partner countries and partner groups. Historical U.S. agricultural trade data is available back to 1967. In addition, U.N. trade statistics (UN Comtrade) may be queried through GATS. UN trade data is available for nearly 200 countries or areas, dating from the inception of the Harmonized System (HS) of trade codes in 1989 to present. The database is continuously updated. U.S. trade data is updated monthly according to the U.S. Census Bureau's reporting system. UN Comtrade data are updated in GATS after nationally submitted data to the UN are standardized by the UN Statistical Division and added to the UN Comtrade database.

Other USDA Reports:

World Agricultural Supply and Demand Estimates (WASDE):

<http://www.usda.gov/oce/commodity/wasde/>

Economic Research Service:

<http://www.ers.usda.gov/topics/crops>

National Agricultural Statistics Service:

<http://www.nass.usda.gov/Publications/>

Table 01 World Crop Production Summary

Million Metric Tons

Commodity	World -	Total Foreign	North America			Former Soviet		Europea n	Asia (WAP)					South America		Selected Other			All Others
			United States	Canada -	Mexico -	Russia -	Ukraine -		China -	India -	Indo-nesia	Paki- stan	Thai- land	Argen- tina	Brazil -	Aus- tralia	South Africa	Turkey -	
---Million metric tons---																			
Wheat																			
2021/22	780.4	735.5	44.8	22.4	3.3	75.2	33.0	nr	136.9	109.6	0.0	27.5	0.0		7.7		2.3	243.4	
2022/23 prel.	789.3	744.4	44.9	34.3	3.6	92.0	21.5	nr	137.7	104.0	0.0	26.4	0.0		10.6		2.1	241.9	
2023/24 proj.																			
Mar	786.7	737.4	49.3	32.0	3.5	91.5	23.4	nr	136.6	110.6	0.0	28.0	0.0		8.1		2.2	240.2	
Apr	787.4	738.0	49.3	32.0	3.5	91.5	23.4	nr	136.6	110.6	0.0	28.2	0.0		8.1		2.2	240.7	
Coarse Grains																			
2021/22	1,500.7	1,104.4	396.3	25.1	32.8	38.5	53.5	nr	281.0	51.4	12.7	11.0	5.4		120.6		16.6	366.5	
2022/23 prel.	1,446.1	1,089.6	356.4	30.5	33.9	44.1	33.9	nr	284.5	56.8	12.9	9.9	5.3		141.6		17.5	342.2	
2023/24 proj.																			
Mar	1,507.4	1,104.5	402.9	27.2	29.2	42.5	36.6	nr	297.1	54.0	12.9	11.0	5.5		129.3		16.0	347.4	
Apr	1,505.1	1,102.2	402.9	27.2	28.5	42.5	36.6	nr	297.1	54.0	12.9	11.0	5.5		129.3		14.5	348.4	
Rice, Milled																			
2021/22	513.1	507.0	6.1	0.0	0.2	0.7	0.0	nr	149.0	129.5	34.4	9.3	19.9		7.3		0.0	154.9	
2022/23 prel.	514.4	509.3	5.1	0.0	0.1	0.6	0.0	nr	145.9	135.8	33.9	7.3	20.9		6.8		0.0	156.2	
2023/24 proj.																			
Mar	515.4	508.5	6.9	0.0	0.2	0.7	0.0	nr	144.6	134.0	33.5	9.0	20.0		7.5		0.0	157.2	
Apr	515.5	508.6	6.9	0.0	0.2	0.7	0.0	nr	144.6	134.0	33.0	9.0	20.0		7.2		0.0	158.1	
Total Grains																			
2021/22	2,794.2	2,347.0	447.2	47.5	36.2	114.4	86.6	nr	566.9	290.4	47.1	47.8	25.2		135.6		18.9	764.7	
2022/23 prel.	2,749.8	2,343.4	406.4	64.9	37.6	136.7	55.4	nr	568.2	296.5	46.8	43.6	26.2		159.0		19.6	740.4	
2023/24 proj.																			
Mar	2,809.5	2,350.4	459.1	59.1	32.8	134.7	60.0	nr	578.4	298.6	46.4	48.0	25.5		144.9		18.2	744.9	
Apr	2,808.0	2,348.9	459.1	59.1	32.1	134.7	60.0	nr	578.4	298.6	45.9	48.2	25.5		144.6		16.7	747.2	
Oilseeds																			
2021/22	611.5	480.2	131.3	20.5	0.9	23.1	24.3	nr	62.1	43.2	14.3	3.3	1.0		135.2		3.4	87.2	
2022/23 prel.	637.5	511.7	125.8	25.3	0.9	26.6	19.8	nr	67.9	42.4	15.0	2.7	1.0		167.0		3.8	94.1	
2023/24 proj.																			
Mar	658.7	536.3	122.4	25.9	0.6	28.1	24.1	nr	67.3	41.9	15.1	3.8	1.0		160.9		3.2	98.2	
Apr	658.5	536.1	122.4	25.9	0.6	28.1	24.1	nr	67.3	41.9	15.1	3.7	1.0		160.9		2.8	98.5	
Cotton																			
2020/21	105.3	90.6	14.6	0.0	nr	0.0	0.0	1.7	29.6	27.5	0.0	nr	0.0		13.8		0.1	10.9	
2021/22 prel.	102.0	84.5	17.5	0.0	nr	0.0	0.0	1.7	26.8	24.3	0.0	nr	0.0		10.8		0.1	nr	
2022/23 proj.																			
May	nr	nr	nr	nr	nr	nr	0.0	nr	nr	nr	nr	nr	nr		nr		nr	nr	
Sep	nr	nr	nr	nr	nr	nr	nr	nr	30.7	nr	0.0	nr	0.0		nr		nr	nr	
Oct	nr	nr	nr	0.0	nr	0.0	nr	nr	nr	nr	nr	nr	nr		11.7		nr	nr	
Nov	nr	nr	nr	nr	nr	nr	nr	1.6	nr	nr	nr	nr	nr		nr		nr	nr	
Dec	nr	nr	nr	nr	1.6	nr	nr	nr	nr	nr	nr	nr	3.9		nr		nr	nr	
Jan	nr	nr	14.5	nr	nr	nr	nr	nr	nr	nr	nr	nr	nr		nr		nr	nr	
Feb	11.0	11.0	nr	nr	nr	nr	nr	nr	nr	nr	nr	nr	nr		nr		nr	nr	
Mar	105.2	90.7	nr	nr	nr	nr	nr	nr	nr	26.3	nr	nr	nr		77.7		nr	nr	

1/ Includes wheat, coarse grains, and rice (milled) shown above.

Table 02 Wheat Area, Yield, and Production

Country / Region	Area (Million hectares)				Yield (Metric tons per hectare)				Production (Million metric tons)				Change in Production			
	2021/22	Prel.	2023/24 Proj.		2021/22	Prel.	2023/24 Proj.		2021/22	Prel.	2023/24 Proj.		From last month		From last year	
		2022/23	Mar	Apr		2022/23	Mar	Apr		2022/23	Mar	Apr	MMT	Percent	MMT	Percent
World	221.66	219.62	222.75	222.72	3.52	3.59	3.53	3.54	780.35	789.34	786.70	787.36	0.66	0.08	-1.97	-0.25
United States	15.03	14.36	15.08	15.08	2.98	3.13	3.27	3.27	44.80	44.90	49.31	49.31	0.00	0.00	4.42	9.84
Total Foreign	206.63	205.26	207.67	207.64	3.56	3.63	3.55	3.55	735.55	744.44	737.39	738.05	0.66	0.09	-6.39	-0.86
European Union	24.29	24.40	24.22	24.20	5.70	5.50	5.52	5.54	138.48	134.29	133.65	134.15	0.50	0.37	-0.14	-0.11
United Kingdom	1.79	1.81	1.73	1.73	7.81	8.59	8.12	8.12	13.99	15.54	14.00	14.00	0.00	0.00	-1.54	-9.91
Serbia	0.60	0.62	0.68	0.73	5.71	5.32	5.06	4.69	3.40	3.30	3.45	3.40	-0.05	-1.42	0.10	3.03
China	23.57	23.52	23.63	23.63	5.81	5.86	5.78	5.78	136.95	137.72	136.59	136.59	0.00	0.00	-1.13	-0.82
South Asia																
India	31.13	30.46	31.40	31.40	3.52	3.41	3.52	3.52	109.59	104.00	110.55	110.55	0.00	0.00	6.55	6.30
Pakistan	9.17	9.00	8.86	8.86	3.00	2.93	3.16	3.18	27.46	26.40	28.00	28.20	0.20	0.71	1.80	6.82
Afghanistan	2.05	1.86	2.35	2.35	1.96	2.05	2.20	2.20	4.02	3.80	5.17	5.17	0.00	0.00	1.37	35.98
Nepal	0.72	0.72	0.72	0.72	2.99	2.98	2.90	2.90	2.15	2.15	2.09	2.09	0.00	0.00	-0.06	-2.56
Former Soviet Union - 12																
Russia	27.63	29.00	28.83	28.83	2.72	3.17	3.17	3.17	75.16	92.00	91.50	91.50	0.00	0.00	-0.50	-0.54
Russia Winter	15.22	16.30	15.27	15.27	3.43	4.17	4.19	4.19	52.19	68.00	64.00	64.00	0.00	0.00	-4.00	-5.88
Russia Spring	12.41	12.70	13.56	13.56	1.85	1.89	2.03	2.03	22.96	24.00	27.50	27.50	0.00	0.00	3.50	14.58
Ukraine	7.41	5.60	5.05	5.05	4.45	3.84	4.63	4.63	33.01	21.50	23.40	23.40	0.00	0.00	1.90	8.84
Kazakhstan	12.72	12.81	13.13	13.13	0.93	1.28	0.92	0.92	11.81	16.40	12.11	12.11	0.00	0.00	-4.29	-26.17
Uzbekistan	1.24	1.26	1.40	1.40	4.83	4.99	4.62	4.62	5.99	6.27	6.46	6.46	0.00	0.00	0.19	3.06
Belarus	0.65	0.68	0.68	0.68	3.54	3.48	3.38	3.38	2.30	2.35	2.30	2.30	0.00	0.00	-0.05	-2.13
Canada	9.20	10.08	10.68	10.68	2.44	3.41	2.99	2.99	22.42	34.34	31.95	31.95	0.00	0.00	-2.38	-6.93
South America																
Argentina	6.55	5.50	5.60	5.60	3.38	2.28	2.84	2.84	22.15	12.55	15.90	15.90	0.00	0.00	3.35	26.69
Brazil	2.74	3.09	3.47	3.47	2.80	3.42	2.33	2.33	7.68	10.55	8.10	8.10	0.00	0.00	-2.45	-23.25
Australia	12.73	13.05	12.50	12.50	2.85	3.11	2.08	2.08	36.24	40.55	26.00	26.00	0.00	0.00	-14.55	-35.87
Africa																
Egypt	1.44	1.45	1.35	1.35	6.85	6.55	6.57	6.57	9.84	9.50	8.87	8.87	0.00	0.00	-0.63	-6.63
Morocco	2.87	2.44	2.50	2.50	2.63	1.11	1.66	1.66	7.54	2.71	4.16	4.16	0.00	0.00	1.45	53.62
Algeria	1.80	1.80	1.80	1.80	1.39	2.00	1.50	1.50	2.50	3.60	2.70	2.70	0.00	0.00	-0.90	-25.00
Ethiopia	1.95	1.90	1.86	1.86	2.83	3.05	2.80	2.80	5.52	5.80	5.20	5.20	0.00	0.00	-0.60	-10.34
Middle East																
Turkey	7.05	6.80	7.20	7.20	2.27	2.54	2.71	2.71	16.00	17.25	19.50	19.50	0.00	0.00	2.25	13.04
Iran	6.00	6.20	6.20	6.20	2.00	2.13	2.26	2.26	12.00	13.20	14.00	14.00	0.00	0.00	0.80	6.06
Iraq	2.00	2.10	2.60	2.60	1.75	1.52	2.00	2.00	3.50	3.20	5.20	5.20	0.00	0.00	2.00	62.50
Syria	1.57	1.18	1.20	1.20	1.25	1.31	2.00	2.00	1.95	1.55	2.40	2.40	0.00	0.00	0.85	54.64
Mexico	0.55	0.59	0.56	0.56	6.00	6.07	6.23	6.23	3.28	3.57	3.46	3.46	0.00	0.00	-0.12	-3.28
Others	7.25	7.36	7.47	7.42	2.85	2.76	2.77	2.79	20.63	20.35	20.67	20.68	0.01	0.05	0.34	1.66

Table 03 Total Coarse Grain Area, Yield, and Production

Country / Region	Area (Million hectares)				Yield (Metric tons per hectare)				Production (Million metric tons)				Change in Production			
	2021/22	Prel.	2023/24 Proj.		2021/22	Prel.	2023/24 Proj.		2021/22	Prel.	2023/24 Proj.		From last month		From last year	
		2022/23	Mar	Apr		2022/23	Mar	Apr		2022/23	Mar	Apr	MMT	Percent	MMT	Percent
World	343.24	334.34	338.55	337.75	4.37	4.33	4.45	4.46	1,500.73	1,446.07	1,507.41	1,505.13	-2.28	-0.15	59.06	4.08
United States	38.21	35.18	38.99	38.99	10.37	10.13	10.33	10.33	396.30	356.45	402.89	402.89	0.00	0.00	46.44	13.03
Total Foreign	305.04	299.16	299.57	298.77	3.62	3.64	3.69	3.69	1,104.43	1,089.62	1,104.52	1,102.24	-2.28	-0.21	12.62	1.16
China	45.80	45.55	46.65	46.65	6.13	6.25	6.37	6.37	280.99	284.50	297.14	297.14	0.00	0.00	12.64	4.44
European Union	27.70	26.58	25.88	25.97	5.60	5.00	5.21	5.24	155.03	132.97	134.78	135.97	1.19	0.88	3.00	2.26
United Kingdom	1.43	1.34	1.36	1.36	5.88	6.46	5.96	5.96	8.41	8.67	8.13	8.13	0.00	0.00	-0.54	-6.25
South America																
Brazil	23.37	24.10	23.77	23.77	5.16	5.88	5.44	5.44	120.62	141.60	129.33	129.33	0.00	0.00	-12.28	-8.67
Argentina	9.62	9.19	9.38	9.38	6.10	4.66	6.85	6.75	58.64	42.84	64.28	63.28	-1.00	-1.56	20.44	47.71
Former Soviet Union - 12																
Russia	14.01	13.60	12.88	12.88	2.75	3.25	3.30	3.30	38.54	44.13	42.54	42.54	0.00	0.00	-1.59	-3.61
Ukraine	8.66	6.32	5.82	5.82	6.18	5.37	6.30	6.30	53.51	33.93	36.62	36.62	0.00	0.00	2.70	7.94
Kazakhstan	2.63	2.63	2.87	2.87	1.43	1.79	1.40	1.40	3.76	4.71	4.01	4.01	0.00	0.00	-0.71	-14.96
Belarus	0.99	1.03	1.05	1.05	3.05	3.11	3.09	3.09	3.00	3.20	3.23	3.23	0.00	0.00	0.03	0.94
Africa																
Nigeria	13.70	13.50	13.40	13.40	1.56	1.59	1.54	1.54	21.40	21.51	20.70	20.70	0.00	0.00	-0.81	-3.75
South Africa	3.19	3.13	3.20	3.20	5.22	5.61	5.02	4.54	16.64	17.53	16.03	14.51	-1.52	-9.48	-3.02	-17.22
Tanzania	5.74	5.30	5.30	5.30	1.47	1.36	1.36	1.36	8.45	7.23	7.23	7.23	0.00	0.00	0.00	0.00
Burkina Faso	4.20	4.20	4.20	4.20	1.00	1.13	1.13	1.13	4.20	4.73	4.75	4.75	0.00	0.00	0.02	0.38
Ethiopia	5.60	5.42	5.65	5.65	3.10	3.18	3.24	3.24	17.37	17.20	18.30	18.30	0.00	0.00	1.10	6.38
Egypt	1.11	1.10	1.12	1.12	7.48	7.52	7.17	7.17	8.29	8.28	8.04	8.04	0.00	0.00	-0.24	-2.92
Mali	5.16	4.80	4.80	4.80	1.23	1.49	1.42	1.42	6.34	7.15	6.80	6.80	0.00	0.00	-0.35	-4.87
India	22.84	23.90	24.63	24.63	2.25	2.38	2.19	2.19	51.39	56.78	54.01	54.01	0.00	0.00	-2.76	-4.87
Southeast Asia																
Indonesia	3.90	3.95	4.00	4.00	3.26	3.27	3.23	3.23	12.70	12.90	12.90	12.90	0.00	0.00	0.00	0.00
Philippines	2.56	2.50	2.50	2.60	3.26	3.32	3.32	3.27	8.34	8.30	8.30	8.50	0.20	2.41	0.20	2.41
Vietnam	0.90	0.89	0.83	0.83	4.92	4.99	4.94	4.94	4.45	4.42	4.10	4.10	0.00	0.00	-0.32	-7.30
Thailand	1.23	1.21	1.28	1.28	4.36	4.35	4.27	4.27	5.35	5.25	5.45	5.45	0.00	0.00	0.20	3.81
Mexico	8.88	8.64	7.70	7.70	3.69	3.92	3.79	3.70	32.79	33.88	29.19	28.49	-0.70	-2.40	-5.39	-15.92
Canada	5.91	5.74	5.24	5.24	4.25	5.32	5.19	5.19	25.12	30.54	27.16	27.16	0.00	0.00	-3.37	-11.04
Australia	6.69	5.69	5.63	5.63	2.87	3.31	2.55	2.55	19.22	18.84	14.34	14.34	0.00	0.00	-4.50	-23.87
Middle East																
Turkey	4.48	4.57	4.59	4.59	2.56	3.25	3.72	3.72	11.48	14.84	17.05	17.05	0.00	0.00	2.21	14.87
Iran	1.91	1.86	1.86	1.86	2.16	2.38	2.38	2.38	4.12	4.42	4.42	4.42	0.00	0.00	0.00	-0.02
Others	72.83	72.45	74.01	73.01	1.71	1.65	1.70	1.72	124.30	119.29	125.71	125.26	-0.44	-0.35	5.97	5.00

World and Selected Countries and Regions; Coarse Grain includes: Barley, Corn, Millet, Mixed Grains, Oats, Rye and Sorghum

Table 04 Corn Area, Yield, and Production

Country / Region	Area (Million hectares)				Yield (Metric tons per hectare)				Production (Million metric tons)				Change in Production						
	2021/22	Prel.		2023/24 Proj.		2021/22	Prel.		2023/24 Proj.		2021/22	Prel.		2023/24 Proj.		From last month		From last year	
		2022/23	Mar	Apr	2022/23		Mar	Apr	2022/23	Mar		Apr	MMT	Percent	MMT	Percent			
World	206.15	200.45	202.87	202.92	5.90	5.78	6.06	6.05	1,216.13	1,157.74	1,230.24	1,227.86	-2.38	-0.19	70.12	6.06			
United States	34.39	31.85	35.01	35.01	11.09	10.89	11.13	11.13	381.47	346.74	389.69	389.69	0.00	0.00	42.96	12.39			
Total Foreign	171.76	168.60	167.86	167.90	4.86	4.81	5.01	4.99	834.66	811.00	840.55	838.17	-2.38	-0.28	27.17	3.35			
China	43.32	43.07	44.22	44.22	6.29	6.44	6.53	6.53	272.55	277.20	288.84	288.84	0.00	0.00	11.64	4.20			
South America																			
Brazil	21.80	22.40	21.90	21.90	5.32	6.12	5.66	5.66	116.00	137.00	124.00	124.00	0.00	0.00	-13.00	-9.49			
Argentina	7.10	6.75	7.00	7.00	6.97	5.33	8.00	7.86	49.50	36.00	56.00	55.00	-1.00	-1.79	19.00	52.78			
Bolivia	0.41	0.44	0.43	0.43	2.42	2.52	2.62	2.62	0.99	1.10	1.13	1.13	0.00	0.00	0.03	2.27			
European Union	9.23	8.85	8.28	8.28	7.77	5.91	7.26	7.37	71.67	52.29	60.10	61.00	0.90	1.50	8.71	16.65			
Africa																			
South Africa	3.00	2.95	3.00	3.00	5.38	5.81	5.17	4.67	16.14	17.10	15.50	14.00	-1.50	-9.68	-3.10	-18.13			
Nigeria	6.00	5.80	5.70	5.70	2.12	2.20	2.11	2.11	12.75	12.74	12.00	12.00	0.00	0.00	-0.74	-5.77			
Ethiopia	2.53	2.55	2.56	2.56	3.72	4.00	4.06	4.06	9.40	10.20	10.40	10.40	0.00	0.00	0.20	1.96			
Egypt	0.93	0.93	0.95	0.95	8.00	8.00	7.58	7.58	7.44	7.44	7.20	7.20	0.00	0.00	-0.24	-3.23			
Tanzania	4.40	4.00	4.00	4.00	1.60	1.48	1.48	1.48	7.04	5.90	5.90	5.90	0.00	0.00	0.00	0.00			
Malawi	1.75	1.82	1.79	1.79	2.62	2.05	1.96	1.96	4.58	3.72	3.51	3.51	0.00	0.00	-0.21	-5.57			
Zambia	1.41	1.37	1.42	1.42	2.57	1.94	2.30	2.30	3.62	2.65	3.26	3.26	0.00	0.00	0.61	22.95			
Kenya	2.17	1.90	2.00	2.00	1.52	1.53	1.60	1.60	3.30	2.90	3.20	3.20	0.00	0.00	0.30	10.34			
Uganda	1.10	1.10	1.10	1.10	2.55	2.55	2.55	2.55	2.80	2.80	2.80	2.80	0.00	0.00	0.00	0.00			
Zimbabwe	0.96	1.00	1.00	1.00	1.53	1.45	1.50	1.50	1.47	1.45	1.50	1.50	0.00	0.00	0.05	3.23			
Former Soviet Union - 12																			
Ukraine	5.49	4.05	3.80	3.80	7.68	6.67	7.76	7.76	42.13	27.00	29.50	29.50	0.00	0.00	2.50	9.26			
Russia	2.90	2.64	2.40	2.40	5.25	6.00	6.92	6.92	15.23	15.83	16.60	16.60	0.00	0.00	0.77	4.85			
South Asia																			
India	9.96	10.74	10.40	10.40	3.39	3.54	3.41	3.41	33.73	38.09	35.50	35.50	0.00	0.00	-2.59	-6.79			
Pakistan	1.65	1.60	1.65	1.65	6.43	5.83	6.36	6.36	10.64	9.33	10.50	10.50	0.00	0.00	1.17	12.53			
Nepal	0.97	0.97	0.97	0.97	2.82	2.82	2.82	2.82	2.72	2.72	2.72	2.72	0.00	0.00	0.00	0.00			
Southeast Asia																			
Indonesia	3.90	3.95	4.00	4.00	3.26	3.27	3.23	3.23	12.70	12.90	12.90	12.90	0.00	0.00	0.00	0.00			
Philippines	2.56	2.50	2.50	2.60	3.26	3.32	3.32	3.27	8.34	8.30	8.30	8.50	0.20	2.41	0.20	2.41			
Vietnam	0.90	0.89	0.83	0.83	4.92	4.99	4.94	4.94	4.45	4.42	4.10	4.10	0.00	0.00	-0.32	-7.30			
Thailand	1.20	1.18	1.25	1.25	4.42	4.41	4.32	4.32	5.30	5.20	5.40	5.40	0.00	0.00	0.20	3.85			
Mexico	7.09	6.89	6.10	6.10	3.77	4.07	3.93	3.82	26.76	28.08	24.00	23.30	-0.70	-2.92	-4.78	-17.01			
Canada	1.46	1.44	1.52	1.52	9.99	10.07	9.92	9.92	14.61	14.54	15.08	15.08	0.00	0.00	0.54	3.69			
Turkey	0.54	0.53	0.65	0.65	12.04	12.83	12.92	12.92	6.50	6.80	8.40	8.40	0.00	0.00	1.60	23.53			
Others	27.03	26.31	26.45	26.39	2.68	2.56	2.73	2.73	72.32	67.30	72.21	71.93	-0.28	-0.39	4.63	6.88			

World and Selected Countries and Regions

Table 05 Barley Area, Yield, and Production

Country / Region	Area (Million hectares)				Yield (Metric tons per hectare)				Production (Million metric tons)				Change in Production						
	2021/22	Prel.		2023/24 Proj.		2021/22	Prel.		2023/24 Proj.		2021/22	Prel.		2023/24 Proj.		From last month		From last year	
		2022/23	Mar	Apr	2022/23		Mar	Apr	2022/23	Mar		Apr	MMT	Percent	MMT	Percent			
World	49.55	47.09	47.76	46.81	2.93	3.18	2.98	3.04	145.20	149.57	142.22	142.26	0.04	0.03	-7.31	-4.89			
United States	0.81	0.98	1.03	1.03	3.25	3.86	3.90	3.90	2.63	3.79	4.03	4.03	0.00	0.00	0.24	6.39			
Total Foreign	48.74	46.11	46.72	45.78	2.93	3.16	2.96	3.02	142.57	145.79	138.20	138.23	0.04	0.03	-7.55	-5.18			
European Union	10.27	10.31	10.30	10.30	5.07	5.02	4.61	4.63	52.07	51.80	47.50	47.70	0.20	0.42	-4.10	-7.92			
United Kingdom	1.15	1.10	1.13	1.13	6.05	6.69	6.22	6.22	6.96	7.39	7.00	7.00	0.00	0.00	-0.39	-5.21			
Former Soviet Union - 12																			
Russia	7.69	7.75	7.65	7.65	2.28	2.77	2.68	2.68	17.51	21.50	20.50	20.50	0.00	0.00	-1.00	-4.65			
Ukraine	2.68	1.95	1.70	1.70	3.70	3.13	3.74	3.74	9.92	6.10	6.35	6.35	0.00	0.00	0.25	4.10			
Kazakhstan	2.16	2.18	2.43	2.43	1.10	1.51	1.08	1.08	2.37	3.29	2.61	2.61	0.00	0.00	-0.67	-20.47			
Belarus	0.35	0.40	0.40	0.40	2.86	2.75	2.75	2.75	1.00	1.10	1.10	1.10	0.00	0.00	0.00	0.00			
Azerbaijan	0.37	0.39	0.38	0.38	3.07	2.85	2.93	2.93	1.15	1.10	1.10	1.10	0.00	0.00	0.00	-0.09			
Canada	3.01	2.64	2.70	2.70	2.32	3.79	3.30	3.30	6.98	9.99	8.90	8.90	0.00	0.00	-1.09	-10.92			
Australia	5.10	4.13	4.20	4.20	2.81	3.43	2.57	2.57	14.34	14.14	10.80	10.80	0.00	0.00	-3.34	-23.60			
Middle East																			
Turkey	3.70	3.80	3.70	3.70	1.22	1.95	2.16	2.16	4.50	7.40	8.00	8.00	0.00	0.00	0.60	8.11			
Iran	1.70	1.65	1.65	1.65	1.59	1.82	1.82	1.82	2.70	3.00	3.00	3.00	0.00	0.00	0.00	0.00			
Iraq	0.40	0.21	1.00	0.16	0.90	1.12	0.20	1.29	0.36	0.24	0.20	0.20	0.00	0.00	-0.04	-14.89			
Syria	1.44	1.12	1.10	1.10	0.18	0.16	0.45	0.45	0.25	0.18	0.50	0.50	0.00	0.00	0.32	179.33			
Africa																			
Ethiopia	0.96	0.98	0.98	0.98	2.45	2.22	2.46	2.46	2.35	2.18	2.40	2.40	0.00	0.00	0.22	9.89			
Morocco	1.49	1.14	1.17	1.17	1.87	0.61	1.15	1.15	2.78	0.70	1.35	1.35	0.00	0.00	0.65	93.97			
Algeria	1.03	1.03	1.03	1.03	0.93	1.37	1.00	1.00	0.95	1.40	1.03	1.03	0.00	0.00	-0.38	-26.79			
Tunisia	0.28	0.30	0.20	0.11	1.54	1.53	0.85	0.82	0.43	0.46	0.17	0.09	-0.08	-47.65	-0.37	-80.65			
South Africa	0.10	0.10	0.11	0.11	3.52	2.99	3.48	3.48	0.33	0.30	0.38	0.38	0.00	0.00	0.07	24.50			
South America																			
Argentina	1.34	1.58	1.40	1.40	3.96	2.93	3.57	3.57	5.30	4.62	5.00	5.00	0.00	0.00	0.38	8.23			
Uruguay	0.22	0.21	0.18	0.18	4.11	4.25	3.89	3.89	0.92	0.90	0.70	0.70	0.00	0.00	-0.20	-21.96			
Brazil	0.11	0.12	0.13	0.13	3.79	3.92	3.96	3.96	0.43	0.48	0.50	0.50	0.00	0.00	0.01	2.70			
India	0.59	0.45	0.63	0.63	2.80	3.03	3.05	3.05	1.66	1.37	1.91	1.91	0.00	0.00	0.54	39.53			
China	0.54	0.54	0.50	0.50	3.94	1.85	4.00	4.00	2.13	1.00	2.00	2.00	0.00	0.00	1.00	100.00			
Mexico	0.35	0.30	0.29	0.29	3.11	2.69	2.69	2.69	1.09	0.80	0.78	0.78	0.00	0.00	-0.02	-1.89			
Afghanistan	0.04	0.06	0.08	0.08	1.63	1.53	1.38	1.38	0.07	0.10	0.11	0.11	0.00	0.00	0.02	15.79			
Others	1.68	1.69	1.72	1.71	2.41	2.53	2.52	2.48	4.04	4.27	4.32	4.24	-0.08	-1.85	-0.04	-0.84			

World and Selected Countries and Regions

Table 06 Oats Area, Yield, and Production

Country / Region	Area (Million hectares)				Yield (Metric tons per hectare)				Production (Million metric tons)				Change in Production			
	2021/22	Prel.	2023/24 Proj.		2021/22	Prel.	2023/24 Proj.		2021/22	Prel.	2023/24 Proj.		From last month		From last year	
		2022/23	Mar	Apr		2022/23	Mar	Apr		2022/23	Mar	Apr	MMT	Percent	MMT	Percent
World	9.67	9.37	8.28	8.33	2.35	2.70	2.35	2.34	22.74	25.33	19.44	19.46	0.02	0.10	-5.87	-23.18
United States	0.26	0.36	0.34	0.34	2.20	2.35	2.46	2.46	0.58	0.84	0.83	0.83	0.00	0.00	-0.01	-1.08
Total Foreign	9.41	9.01	7.94	7.99	2.36	2.72	2.34	2.33	22.16	24.49	18.61	18.63	0.02	0.11	-5.86	-23.93
European Union	2.55	2.35	2.24	2.29	2.94	3.19	2.63	2.59	7.50	7.49	5.90	5.92	0.02	0.34	-1.57	-21.00
Former Soviet Union - 12																
Russia	2.17	2.13	1.77	1.77	1.72	2.11	1.86	1.86	3.73	4.50	3.30	3.30	0.00	0.00	-1.20	-26.67
Ukraine	0.18	0.15	0.15	0.15	2.61	2.47	2.33	2.33	0.48	0.38	0.35	0.35	0.00	0.00	-0.03	-7.89
Belarus	0.15	0.16	0.16	0.16	2.33	2.42	2.26	2.26	0.35	0.38	0.35	0.35	0.00	0.00	-0.03	-6.67
Kazakhstan	0.20	0.20	0.19	0.19	0.90	1.16	0.79	0.79	0.18	0.23	0.15	0.15	0.00	0.00	-0.08	-34.50
Canada	1.21	1.40	0.82	0.82	2.39	3.73	3.20	3.20	2.90	5.23	2.64	2.64	0.00	0.00	-2.59	-49.56
South America																
Argentina	0.35	0.26	0.29	0.29	2.07	1.67	2.14	2.14	0.73	0.43	0.61	0.61	0.00	0.00	0.18	42.19
Brazil	0.50	0.50	0.51	0.51	2.27	2.38	2.39	2.39	1.14	1.19	1.22	1.22	0.00	0.00	0.03	2.52
Chile	0.12	0.07	0.10	0.10	4.70	4.38	4.74	4.74	0.58	0.32	0.45	0.45	0.00	0.00	0.14	42.86
Uruguay	0.01	0.02	0.01	0.01	2.21	2.40	2.20	2.20	0.03	0.04	0.02	0.02	0.00	0.00	-0.01	-38.89
Oceania																
Australia	0.84	0.75	0.70	0.70	2.06	2.13	1.57	1.57	1.74	1.59	1.10	1.10	0.00	0.00	-0.49	-30.69
New Zealand	0.00	0.01	0.00	0.00	6.25	6.60	6.50	6.50	0.03	0.03	0.03	0.03	0.00	0.00	-0.01	-21.21
China	0.41	0.41	0.41	0.41	1.48	1.48	1.48	1.48	0.60	0.60	0.60	0.60	0.00	0.00	0.00	0.00
Africa																
Algeria	0.08	0.08	0.08	0.08	1.31	1.31	1.31	1.31	0.11	0.11	0.11	0.11	0.00	0.00	0.00	0.00
Morocco	0.02	0.01	0.02	0.02	0.33	0.31	0.40	0.40	0.01	0.00	0.01	0.01	0.00	0.00	0.00	50.00
South Africa	0.04	0.03	0.03	0.03	1.64	1.04	1.43	1.43	0.06	0.03	0.04	0.04	0.00	0.00	0.01	42.86
Other Europe																
United Kingdom	0.20	0.17	0.17	0.17	5.62	5.79	5.15	5.15	1.12	1.01	0.85	0.85	0.00	0.00	-0.16	-15.59
Norway	0.07	0.07	0.07	0.07	4.29	4.29	4.29	4.29	0.30	0.30	0.30	0.30	0.00	0.00	0.00	0.00
Serbia	0.02	0.02	0.02	0.02	3.11	2.80	3.00	3.00	0.06	0.04	0.06	0.06	0.00	0.00	0.02	42.86
Albania	0.02	0.02	0.02	0.02	2.20	2.27	2.27	2.27	0.03	0.03	0.03	0.03	0.00	0.00	0.00	0.00
Bosnia and Herzegovina	0.01	0.01	0.01	0.01	2.82	4.00	3.43	3.43	0.03	0.04	0.02	0.02	0.00	0.00	-0.02	-45.45
Turkey	0.14	0.14	0.13	0.13	2.01	2.64	2.60	2.60	0.28	0.37	0.33	0.33	0.00	0.00	-0.04	-10.96
Mexico	0.05	0.05	0.03	0.03	2.02	2.22	2.20	2.20	0.09	0.11	0.06	0.06	0.00	0.00	-0.06	-51.33
Others	0.06	0.03	0.06	0.06	1.66	1.63	1.68	1.68	0.10	0.05	0.09	0.09	0.00	0.00	0.04	80.77

World and Selected Countries and Regions

Table 07 Rye Area, Yield, and Production

Country / Region	Area (Million hectares)				Yield (Metric tons per hectare)				Production (Million metric tons)				Change in Production			
	2021/22	Prel.	2023/24 Proj.		2021/22	Prel.	2023/24 Proj.		2021/22	Prel.	2023/24 Proj.		From last month		From last year	
		2022/23	Mar	Apr		2022/23	Mar	Apr		2022/23	Mar	Apr	MMT	Percent	MMT	Percent
World	4.02	3.68	3.60	3.61	3.08	3.30	3.22	3.23	12.37	12.14	11.58	11.64	0.06	0.47	-0.50	-4.13
United States	0.12	0.14	0.13	0.13	2.09	2.26	2.03	2.03	0.25	0.32	0.26	0.26	0.00	0.00	-0.05	-16.46
Total Foreign	3.90	3.54	3.47	3.48	3.11	3.34	3.27	3.27	12.12	11.82	11.32	11.38	0.06	0.49	-0.45	-3.80
European Union	1.93	1.76	1.85	1.86	4.15	4.27	4.10	4.10	8.00	7.53	7.58	7.64	0.06	0.73	0.11	1.45
Former Soviet Union - 12																
Russia	0.99	0.88	0.79	0.79	1.73	2.27	2.15	2.15	1.72	2.00	1.70	1.70	0.00	0.00	-0.30	-15.00
Belarus	0.33	0.30	0.31	0.31	2.46	2.50	2.52	2.52	0.80	0.75	0.78	0.78	0.00	0.00	0.03	4.00
Ukraine	0.18	0.10	0.08	0.08	3.43	3.15	2.88	2.88	0.60	0.32	0.23	0.23	0.00	0.00	-0.09	-26.98
Kazakhstan	0.04	0.03	0.02	0.02	0.91	1.76	0.86	0.86	0.04	0.06	0.02	0.02	0.00	0.00	-0.04	-70.00
Turkey	0.10	0.10	0.11	0.11	2.00	2.79	2.91	2.91	0.20	0.27	0.32	0.32	0.00	0.00	0.05	17.22
Canada	0.12	0.15	0.12	0.12	3.21	3.42	3.09	3.09	0.37	0.52	0.36	0.36	0.00	0.00	-0.16	-31.15
South America																
Chile	0.00	0.00	0.00	0.00	5.00	5.00	0.00	0.00	0.01	0.01	0.00	0.00	0.00	100.00	-0.01	-100.00
Argentina	0.12	0.11	0.09	0.09	1.88	1.66	1.83	1.83	0.23	0.18	0.17	0.17	0.00	0.00	-0.01	-7.82
Other Europe																
Bosnia and Herzegovina	0.00	0.00	0.00	0.00	3.00	3.00	3.00	3.00	0.01	0.01	0.01	0.01	0.00	0.00	0.00	0.00
Switzerland	0.00	0.00	0.00	0.00	5.50	5.50	5.50	5.50	0.01	0.01	0.01	0.01	0.00	0.00	0.00	0.00
Serbia	0.01	0.01	0.01	0.01	3.80	3.00	3.33	3.33	0.02	0.02	0.02	0.02	0.00	0.00	0.00	11.11
Australia	0.05	0.05	0.05	0.05	0.71	0.71	0.71	0.71	0.03	0.03	0.03	0.03	0.00	0.00	0.00	0.00
Others	0.04	0.05	0.04	0.04	2.18	2.80	2.20	2.20	0.10	0.13	0.10	0.10	0.00	0.00	-0.03	-23.02

World and Selected Countries and Regions

Table 08 Sorghum Area, Yield, and Production

Country / Region	Area (Million hectares)				Yield (Metric tons per hectare)				Production (Million metric tons)				Change in Production			
	Prel.		2023/24 Proj.		Prel.		2023/24 Proj.		Prel.		2023/24 Proj.		From last month		From last year	
	2021/22	2022/23	Mar	Apr	2021/22	2022/23	Mar	Apr	2021/22	2022/23	Mar	Apr	MMT	Percent	MMT	Percent
World	40.63	39.67	41.57	41.57	1.50	1.39	1.44	1.44	60.93	55.32	59.72	59.71	-0.01	-0.02	4.39	7.94
United States	2.63	1.85	2.48	2.48	4.33	2.58	3.26	3.26	11.38	4.77	8.07	8.07	0.00	0.00	3.30	69.20
Total Foreign	38.01	37.82	39.10	39.10	1.30	1.34	1.32	1.32	49.55	50.55	51.65	51.64	-0.01	-0.02	1.09	2.16
Africa																
Nigeria	5.70	5.70	5.70	5.70	1.18	1.18	1.18	1.18	6.73	6.74	6.70	6.70	0.00	0.00	-0.04	-0.62
Ethiopia	1.65	1.52	1.66	1.66	2.70	2.56	2.65	2.65	4.45	3.88	4.40	4.40	0.00	0.00	0.52	13.49
Sudan	6.92	7.00	7.50	7.50	0.51	0.75	0.67	0.67	3.53	5.25	5.00	5.00	0.00	0.00	-0.25	-4.73
Burkina Faso	1.90	1.90	1.90	1.90	0.87	1.06	1.00	1.00	1.64	2.01	1.90	1.90	0.00	0.00	-0.11	-5.66
Mali	1.55	1.50	1.50	1.50	0.81	1.05	1.00	1.00	1.25	1.58	1.50	1.50	0.00	0.00	-0.08	-5.18
Niger	3.52	3.70	3.70	3.70	0.34	0.57	0.51	0.51	1.21	2.10	1.90	1.90	0.00	0.00	-0.20	-9.52
Cameroon	0.74	0.74	0.74	0.74	1.62	1.62	1.62	1.62	1.20	1.20	1.20	1.20	0.00	0.00	0.00	0.00
Tanzania	1.04	1.00	1.00	1.00	1.04	1.00	1.00	1.00	1.08	1.00	1.00	1.00	0.00	0.00	0.00	0.00
Egypt	0.16	0.15	0.15	0.15	4.90	5.00	5.00	5.00	0.77	0.75	0.75	0.75	0.00	0.00	0.00	0.00
Uganda	0.23	0.25	0.25	0.25	0.87	0.90	0.90	0.90	0.20	0.23	0.23	0.23	0.00	0.00	0.00	0.00
Ghana	0.31	0.31	0.31	0.31	1.05	1.49	1.13	1.13	0.32	0.46	0.35	0.35	0.00	0.00	-0.11	-24.41
Mozambique	0.25	0.25	0.25	0.25	0.64	0.61	0.64	0.64	0.16	0.15	0.16	0.16	0.00	0.00	0.01	4.58
South Africa	0.04	0.03	0.04	0.04	2.78	2.76	2.75	2.25	0.10	0.09	0.11	0.09	-0.02	-18.18	0.00	-4.26
Mexico	1.40	1.40	1.29	1.29	3.47	3.50	3.39	3.39	4.84	4.89	4.35	4.35	0.00	0.00	-0.54	-11.08
South America																
Argentina	0.70	0.50	0.60	0.60	4.12	3.22	4.17	4.17	2.88	1.61	2.50	2.50	0.00	0.00	0.89	55.28
Brazil	0.95	1.07	1.23	1.23	3.20	2.72	2.93	2.93	3.04	2.92	3.60	3.60	0.00	0.00	0.68	23.29
South Asia																
India	3.80	3.54	4.10	4.10	1.09	1.08	1.07	1.07	4.15	3.81	4.40	4.40	0.00	0.00	0.59	15.36
Pakistan	0.08	0.22	0.22	0.22	0.83	0.63	0.63	0.63	0.06	0.14	0.14	0.14	0.00	0.00	0.00	0.00
China	0.63	0.63	0.63	0.63	4.76	4.76	4.76	4.76	3.00	3.00	3.00	3.00	0.00	0.00	0.00	0.00
Australia	0.62	0.69	0.60	0.60	4.26	3.84	3.33	3.33	2.65	2.64	2.00	2.00	0.00	0.00	-0.64	-24.18
European Union	0.15	0.13	0.16	0.16	5.44	4.14	5.16	5.23	0.80	0.52	0.80	0.81	0.01	1.25	0.29	55.17
Others	5.69	5.60	5.58	5.58	0.97	0.99	1.01	1.01	5.50	5.57	5.67	5.67	0.00	0.00	0.10	1.80

World and Selected Countries and Regions

Table 09 Rice Area, Yield, and Production
World and Selected Countries and Regions

Country / Region	Area (Million hectares)				Yield (Metric tons per hectare)				Production (Million metric tons)				Change in Production			
	Prel.		2023/24 Proj.		Prel.		2023/24 Proj.		Prel.		2023/24 Proj.		From last month		From last year	
	2021/22	2022/23	Mar	Apr	2021/22	2022/23	Mar	Apr	2021/22	2022/23	Mar	Apr	MMT	Percent	MMT	Percent
World	165.66	165.43	166.18	165.98	4.62	4.64	4.63	4.64	513.10	514.42	515.39	515.53	0.14	0.03	1.10	0.21
United States	1.00	0.88	1.16	1.16	8.64	8.28	8.57	8.57	6.07	5.08	6.93	6.93	0.00	0.00	1.85	36.38
Total Foreign	164.66	164.55	165.02	164.82	4.60	4.63	4.60	4.61	507.03	509.34	508.46	508.60	0.14	0.03	-0.75	-0.15
East Asia																
China	29.92	29.45	28.95	28.95	7.11	7.08	7.14	7.14	148.99	145.95	144.62	144.62	0.00	0.00	-1.33	-0.91
Japan	1.52	1.50	1.47	1.46	6.90	6.86	6.82	6.84	7.64	7.48	7.30	7.27	-0.03	-0.38	-0.21	-2.78
Korea, South	0.73	0.73	0.71	0.71	7.12	6.87	7.00	7.00	3.88	3.76	3.70	3.70	0.00	0.00	-0.06	-1.65
Korea, North	0.56	0.54	0.54	0.54	3.74	3.87	4.18	4.18	1.36	1.36	1.47	1.47	0.00	0.00	0.11	8.09
South Asia																
India	46.28	47.83	48.00	48.00	4.20	4.26	4.19	4.19	129.47	135.76	134.00	134.00	0.00	0.00	-1.76	-1.29
Bangladesh	11.62	11.60	11.65	11.75	4.63	4.70	4.67	4.72	35.85	36.35	36.30	37.00	0.70	1.93	0.65	1.79
Pakistan	3.54	2.98	3.60	3.62	3.95	3.68	3.75	3.73	9.32	7.30	9.00	9.00	0.00	0.00	1.70	23.29
Nepal	1.48	1.45	1.45	1.45	3.47	3.79	3.66	3.66	3.42	3.65	3.53	3.53	0.00	0.00	-0.12	-3.39
Sri Lanka	1.13	1.15	1.16	1.16	3.56	3.63	4.22	4.22	2.73	2.84	3.33	3.33	0.00	0.00	0.50	17.49
Southeast Asia																
Indonesia	11.60	11.30	11.30	11.00	4.67	4.72	4.67	4.73	34.40	33.90	33.50	33.02	-0.48	-1.43	-0.88	-2.60
Vietnam	7.10	7.10	7.15	7.15	6.01	6.07	6.05	6.05	26.67	26.94	27.00	27.00	0.00	0.00	0.06	0.22
Thailand	10.70	11.07	10.65	10.65	2.81	2.86	2.85	2.85	19.88	20.91	20.00	20.00	0.00	0.00	-0.91	-4.35
Burma	7.00	6.80	6.86	6.86	2.77	2.71	2.72	2.72	12.40	11.80	11.95	11.95	0.00	0.00	0.15	1.27
Philippines	4.80	4.85	4.80	4.80	4.15	4.13	4.07	4.17	12.54	12.63	12.30	12.60	0.30	2.44	-0.03	-0.20
Cambodia	3.27	3.31	3.37	3.37	2.89	2.94	2.92	2.92	5.77	5.93	6.00	6.00	0.00	0.00	0.07	1.13
Laos	0.94	0.95	0.95	0.95	3.28	3.26	3.21	3.21	1.95	1.95	1.92	1.92	0.00	0.00	-0.03	-1.54
Malaysia	0.65	0.66	0.66	0.66	3.97	3.99	4.08	4.08	1.68	1.70	1.75	1.75	0.00	0.00	0.05	2.94
South America																
Brazil	1.62	1.48	1.57	1.55	6.67	6.78	7.01	6.81	7.34	6.82	7.48	7.17	-0.31	-4.09	0.35	5.16
Peru	0.42	0.42	0.43	0.43	8.36	8.55	8.52	8.52	2.43	2.48	2.50	2.50	0.00	0.00	0.02	0.64
Africa																
Egypt	0.50	0.60	0.63	0.63	8.41	8.70	8.70	8.70	2.90	3.60	3.78	3.78	0.00	0.00	0.18	5.00
Madagascar	1.60	1.60	1.60	1.60	2.74	2.75	2.75	2.75	2.81	2.82	2.82	2.82	0.00	0.00	0.00	0.00
Nigeria	3.65	3.50	3.50	3.50	2.29	2.43	2.37	2.37	5.26	5.36	5.23	5.23	0.00	0.00	-0.13	-2.35
European Union	0.40	0.33	0.34	0.36	6.64	6.11	6.56	6.05	1.73	1.29	1.43	1.38	-0.05	-3.36	0.09	7.23
Iran	0.56	0.57	0.57	0.57	5.14	5.32	5.30	5.30	1.90	2.00	2.00	2.00	0.00	0.00	-0.01	-0.25
Others	13.06	12.80	13.12	13.12	2.87	2.94	2.95	2.95	24.72	24.78	25.56	25.56	0.00	0.00	0.78	3.14

Yield is on a rough basis, before the milling process. Production is on a milled basis, after the milling process.

Table 10 Total Oilseed Area, Yield, and Production

World and Selected Countries and Regions

Country / Region	Area (Million hectares)				Yield (Metric tons per hectare)				Production (Million metric tons)				Change in Production			
	2021/22	Prel.	2023/24 Proj.		2021/22	Prel.	2023/24 Proj.		2021/22	Prel.	2023/24 Proj.		From last month		From last year	
		2022/23	Mar	Apr		2022/23	Mar	Apr		2022/23	Mar	Apr	MMT	Percent	MMT	Percent
World Total	--	--	--	--	--	--	--	--	611.55	637.47	658.68	658.50	-0.18	-0.03	21.03	3.30
Total Foreign	--	--	--	--	--	--	--	--	480.22	511.72	536.31	536.12	-0.18	-0.03	24.41	4.77
Oilseed, Copra	--	--	--	--	--	--	--	--	6.03	6.00	6.03	6.01	-0.02	-0.27	0.01	0.13
Oilseed, Palm Kernel	--	--	--	--	--	--	--	--	19.14	20.07	20.71	20.71	0.00	0.01	0.64	3.17
Major Oilseeds	260.92	267.16	270.23	270.07	2.25	2.29	2.34	2.34	586.38	611.40	631.95	631.78	-0.17	-0.03	20.38	3.33
United States	41.05	39.91	38.28	38.28	3.20	3.15	3.20	3.20	131.32	125.75	122.37	122.37	0.00	0.00	-3.38	-2.69
Foreign Oilseeds	219.87	227.25	231.95	231.79	2.07	2.14	2.20	2.20	455.06	485.64	509.57	509.40	-0.17	-0.03	23.76	4.89
South America	68.67	71.18	74.42	74.43	2.87	3.01	3.16	3.16	196.79	214.50	234.90	235.10	0.20	0.09	20.60	9.60
Brazil	43.23	46.46	47.84	47.84	3.12	3.59	3.36	3.36	135.03	166.85	160.79	160.79	0.00	0.00	-6.06	-3.63
Argentina	18.77	17.76	19.48	19.48	2.66	1.77	2.88	2.88	49.88	31.45	56.10	56.10	0.00	0.00	24.65	78.38
Paraguay	3.53	3.74	3.70	3.71	1.23	2.75	2.84	2.89	4.34	10.27	10.52	10.72	0.20	1.90	0.45	4.33
Bolivia	1.68	1.81	1.84	1.84	2.18	2.39	2.16	2.16	3.67	4.31	3.98	3.98	0.00	0.00	-0.33	-7.55
Uruguay	1.32	1.28	1.42	1.42	2.68	1.00	2.21	2.21	3.53	1.28	3.15	3.15	0.00	0.00	1.87	146.75
China	24.02	25.95	26.14	26.14	2.58	2.62	2.58	2.58	62.07	67.92	67.32	67.32	0.00	0.00	-0.60	-0.88
South Asia	41.74	43.63	44.37	44.31	1.11	1.04	1.03	1.03	46.48	45.32	45.88	45.76	-0.12	-0.26	0.44	0.96
India	38.49	40.19	40.40	40.40	1.10	1.03	1.01	1.01	42.15	41.39	40.84	40.84	0.00	0.00	-0.55	-1.34
Pakistan	2.53	2.51	3.06	2.99	1.31	1.06	1.24	1.23	3.31	2.67	3.80	3.68	-0.12	-3.16	1.01	37.84
European Union	11.06	12.32	12.53	12.30	2.81	2.61	2.68	2.71	31.05	32.13	33.60	33.32	-0.28	-0.83	1.19	3.69
United Kingdom	0.31	0.36	0.39	0.39	3.20	3.74	3.14	3.14	0.98	1.36	1.23	1.23	0.00	0.00	-0.14	-9.99
Former Soviet Union - 12	27.79	27.85	28.52	28.67	1.89	1.87	2.02	2.02	52.64	52.07	57.56	57.97	0.41	0.71	5.90	11.33
Russia	14.23	14.74	14.85	14.85	1.62	1.80	1.89	1.89	23.11	26.55	28.10	28.10	0.00	0.00	1.55	5.84
Ukraine	9.58	8.75	9.50	9.50	2.54	2.26	2.54	2.54	24.32	19.80	24.10	24.10	0.00	0.00	4.30	21.72
Uzbekistan	1.05	1.07	1.05	1.05	1.13	1.24	1.15	1.15	1.19	1.33	1.21	1.21	0.00	0.00	-0.13	-9.39
Canada	11.06	10.75	11.16	11.16	1.86	2.36	2.32	2.32	20.55	25.32	25.87	25.87	0.00	0.00	0.55	2.18
Africa	25.08	24.28	24.35	24.32	0.99	1.05	1.04	1.02	24.70	25.47	25.20	24.88	-0.33	-1.29	-0.59	-2.32
Nigeria	4.97	4.87	4.87	4.87	1.11	1.15	1.15	1.15	5.50	5.61	5.60	5.60	0.00	0.00	-0.01	-0.25
South Africa	1.76	1.88	1.93	1.87	1.92	2.02	1.64	1.48	3.37	3.79	3.16	2.76	-0.41	-12.81	-1.04	-27.32
Tanzania	1.34	1.36	1.47	1.47	0.90	0.91	0.87	0.87	1.21	1.23	1.28	1.28	0.00	0.00	0.04	3.49
Southeast Asia	3.12	3.08	3.05	3.05	1.36	1.36	1.39	1.39	4.23	4.18	4.23	4.23	0.00	0.00	0.05	1.12
Burma	1.95	1.94	1.95	1.95	1.16	1.18	1.24	1.24	2.25	2.28	2.41	2.41	0.00	0.00	0.13	5.47
Indonesia	0.90	0.87	0.84	0.84	1.55	1.52	1.49	1.49	1.39	1.32	1.26	1.26	0.00	0.00	-0.07	-4.92
Australia	3.94	4.61	4.07	4.07	2.14	2.13	1.73	1.72	8.45	9.82	7.04	6.99	-0.05	-0.64	-2.83	-28.83
Turkey	1.34	1.47	1.27	1.27	2.61	2.71	2.43	2.43	3.49	3.98	3.09	3.09	0.00	0.00	-0.90	-22.51
Others	1.75	1.78	1.69	1.69	2.06	2.01	2.18	2.17	3.62	3.57	3.67	3.66	-0.01	-0.25	0.09	2.58

World Total and Total Foreign: (Major Oilseeds plus copra and palm kernel) Major Oilseeds: (soybeans, sunflowerseeds, peanuts(inshell), cottonseed and rapeseed)

Table 11 Soybean Area, Yield, and Production

Country / Region	Area (Million hectares)				Yield (Metric tons per hectare)				Production (Million metric tons)				Change in Production			
	Prel.		2023/24 Proj.		Prel.		2023/24 Proj.		Prel.		2023/24 Proj.		From last month		From last year	
	2021/22	2022/23	Mar	Apr	2021/22	2022/23	Mar	Apr	2021/22	2022/23	Mar	Apr	MMT	Percent	MMT	Percent
World	131.46	136.86	139.47	139.47	2.74	2.76	2.85	2.84	360.45	378.20	396.85	396.73	-0.13	-0.03	18.53	4.90
United States	34.92	34.87	33.33	33.33	3.48	3.33	3.40	3.40	121.50	116.22	113.34	113.34	0.00	0.00	-2.88	-2.48
Total Foreign	96.54	101.98	106.14	106.14	2.48	2.57	2.67	2.67	238.94	261.98	283.51	283.38	-0.13	-0.04	21.41	8.17
South America																
Brazil	41.60	44.60	45.90	45.90	3.14	3.63	3.38	3.38	130.50	162.00	155.00	155.00	0.00	0.00	-7.00	-4.32
Argentina	15.90	14.40	16.50	16.50	2.76	1.74	3.03	3.03	43.90	25.00	50.00	50.00	0.00	0.00	25.00	100.00
Paraguay	3.42	3.60	3.55	3.56	1.22	2.79	2.90	2.95	4.18	10.05	10.30	10.50	0.20	1.94	0.45	4.48
Bolivia	1.53	1.58	1.60	1.60	2.27	2.53	2.28	2.28	3.46	3.99	3.65	3.65	0.00	0.00	-0.34	-8.41
Uruguay	1.16	0.93	1.28	1.28	2.80	0.75	2.27	2.27	3.23	0.70	2.90	2.90	0.00	0.00	2.20	314.29
East Asia																
China	8.42	10.24	10.47	10.47	1.95	1.98	1.99	1.99	16.40	20.28	20.84	20.84	0.00	0.00	0.56	2.74
Korea, South	0.05	0.06	0.07	0.07	2.06	2.03	2.07	2.07	0.11	0.13	0.14	0.14	0.00	0.00	0.01	8.46
Korea, North	0.17	0.16	0.16	0.16	1.15	1.15	1.15	1.15	0.19	0.18	0.18	0.18	0.00	0.00	0.00	0.00
Japan	0.15	0.15	0.16	0.16	1.63	1.58	1.63	1.63	0.24	0.24	0.25	0.25	0.00	0.00	0.02	6.30
India	12.15	13.08	13.00	13.00	0.98	0.95	0.85	0.85	11.89	12.41	11.00	11.00	0.00	0.00	-1.41	-11.37
Canada	2.08	2.12	2.26	2.26	2.99	3.09	3.09	3.09	6.22	6.54	6.98	6.98	0.00	0.00	0.44	6.69
Former Soviet Union - 12																
Russia	2.99	3.36	3.50	3.50	1.59	1.79	1.94	1.94	4.76	6.00	6.80	6.80	0.00	0.00	0.80	13.41
Ukraine	1.44	1.82	2.00	2.00	2.64	2.25	2.60	2.60	3.80	4.10	5.20	5.20	0.00	0.00	1.10	26.83
European Union	1.01	1.12	1.09	1.03	2.82	2.34	2.81	2.89	2.83	2.61	3.06	2.98	-0.08	-2.61	0.37	14.18
Southeast Asia																
Indonesia	0.35	0.33	0.32	0.32	1.21	1.18	1.17	1.17	0.43	0.39	0.38	0.38	0.00	0.00	-0.02	-3.85
Vietnam	0.03	0.03	0.03	0.03	1.61	1.60	1.61	1.61	0.05	0.05	0.05	0.05	0.00	0.00	0.00	-6.25
Thailand	0.03	0.03	0.03	0.03	1.63	1.63	1.63	1.63	0.05	0.05	0.05	0.05	0.00	0.00	0.00	0.00
Burma	0.13	0.13	0.12	0.12	1.04	1.04	1.04	1.04	0.14	0.13	0.13	0.13	0.00	0.00	-0.01	-3.85
Serbia	0.24	0.24	0.24	0.24	2.28	1.70	2.77	2.77	0.54	0.40	0.65	0.65	0.00	0.00	0.25	62.91
Mexico	0.18	0.12	0.09	0.09	1.57	1.52	1.53	1.53	0.29	0.18	0.14	0.14	0.00	0.00	-0.04	-21.14
Africa																
South Africa	0.93	1.15	1.13	1.15	2.41	2.40	1.90	1.58	2.23	2.76	2.14	1.82	-0.33	-15.19	-0.94	-34.12
Nigeria	1.20	1.20	1.15	1.15	0.93	0.98	1.00	1.00	1.12	1.18	1.15	1.15	0.00	0.00	-0.03	-2.54
Zambia	0.30	0.38	0.38	0.38	1.35	1.27	1.27	1.27	0.41	0.48	0.48	0.48	0.00	0.00	0.00	0.00
Uganda	0.17	0.17	0.17	0.17	1.20	1.18	1.18	1.18	0.20	0.20	0.20	0.20	0.00	0.00	0.00	0.00
Middle East																
Iran	0.07	0.08	0.07	0.07	2.29	2.27	2.36	2.36	0.16	0.17	0.17	0.17	0.00	0.00	-0.01	-2.94
Turkey	0.03	0.04	0.03	0.03	3.91	4.14	4.12	4.12	0.13	0.15	0.14	0.14	0.00	0.00	-0.01	-3.45
Others	0.84	0.90	0.86	0.89	1.79	1.81	1.79	1.82	1.49	1.63	1.55	1.63	0.08	5.17	0.00	-0.18

World and Selected Countries and Regions

Table 12 Cottonseed Area, Yield, and Production

Country / Region	Area (Million hectares)				Yield (Metric tons per hectare)				Production (Million metric tons)				Change in Production			
	Prel.		2023/24 Proj.		Prel.		2023/24 Proj.		Prel.		2023/24 Proj.		From last month		From last year	
	2021/22	2022/23	Mar	Apr	2021/22	2022/23	Mar	Apr	2021/22	2022/23	Mar	Apr	MMT	Percent	MMT	Percent
World	31.77	31.19	31.00	31.01	1.30	1.35	1.34	1.34	41.29	42.24	41.66	41.41	-0.25	-0.60	-0.83	-1.97
United States	4.15	2.95	2.86	2.86	1.16	1.36	1.20	1.20	4.83	4.01	3.44	3.44	0.00	0.00	-0.57	-14.21
Total Foreign	27.62	28.24	28.15	28.15	1.32	1.35	1.36	1.35	36.46	38.23	38.22	37.97	-0.25	-0.65	-0.26	-0.69
South Asia																
India	12.37	12.93	12.70	12.70	0.83	0.86	0.85	0.85	10.32	11.17	10.83	10.83	0.00	0.00	-0.34	-3.04
Pakistan	2.00	1.80	2.40	2.40	1.30	0.94	1.21	1.21	2.60	1.69	2.90	2.90	0.00	0.00	1.21	71.82
China	3.10	3.15	2.90	2.90	3.39	3.82	3.72	3.72	10.50	12.03	10.78	10.78	0.00	0.00	-1.25	-10.42
Former Soviet Union - 12																
Uzbekistan	1.03	1.05	1.03	1.03	1.09	1.19	1.10	1.10	1.12	1.25	1.14	1.14	0.00	0.00	-0.12	-9.41
Turkmenistan	0.55	0.55	0.55	0.55	0.64	0.64	0.64	0.64	0.35	0.35	0.35	0.35	0.00	0.00	0.00	0.00
Tajikistan	0.17	0.17	0.19	0.19	1.09	1.11	1.16	1.16	0.19	0.19	0.22	0.22	0.00	0.00	0.03	17.55
Kazakhstan	0.11	0.13	0.12	0.12	0.84	1.05	0.88	0.88	0.09	0.13	0.11	0.11	0.00	0.00	-0.03	-19.85
South America																
Brazil	1.37	1.60	1.66	1.66	2.62	2.43	2.91	2.91	3.59	3.89	4.83	4.83	0.00	0.00	0.94	24.24
Argentina	0.48	0.51	0.56	0.56	1.12	0.84	1.06	1.06	0.54	0.43	0.59	0.59	0.00	0.00	0.16	37.35
Middle East																
Turkey	0.45	0.56	0.44	0.44	2.76	2.88	2.38	2.38	1.24	1.60	1.05	1.05	0.00	0.00	-0.56	-34.69
Syria	0.03	0.03	0.03	0.03	2.20	2.20	2.20	2.20	0.06	0.06	0.06	0.06	0.00	0.00	0.00	0.00
Iran	0.10	0.10	0.10	0.10	1.35	1.35	1.18	1.18	0.14	0.14	0.12	0.12	0.00	0.00	-0.02	-12.59
Australia	0.64	0.65	0.52	0.52	2.41	2.24	2.80	2.33	1.53	1.45	1.44	1.20	-0.24	-16.64	-0.25	-17.33
European Union	0.32	0.31	0.25	0.25	1.66	1.70	1.34	1.34	0.53	0.53	0.34	0.34	0.00	0.00	-0.19	-35.62
Africa																
Burkina Faso	0.60	0.62	0.54	0.54	0.45	0.35	0.40	0.40	0.27	0.21	0.21	0.21	0.00	0.00	0.00	-0.93
Mali	0.72	0.60	0.71	0.71	0.56	0.35	0.52	0.52	0.40	0.21	0.37	0.37	0.00	0.00	0.16	76.44
Cameroon	0.23	0.23	0.25	0.25	1.39	1.29	1.35	1.35	0.32	0.30	0.33	0.33	0.00	0.00	0.03	10.00
Cote d'Ivoire	0.47	0.41	0.40	0.40	0.60	0.29	0.50	0.50	0.28	0.12	0.20	0.20	0.00	0.00	0.08	67.23
Benin	0.64	0.57	0.51	0.51	0.73	0.64	0.68	0.68	0.47	0.36	0.35	0.35	0.00	0.00	-0.02	-5.22
Tanzania	0.34	0.36	0.47	0.47	0.33	0.37	0.38	0.38	0.11	0.13	0.18	0.18	0.00	0.00	0.04	32.58
Egypt	0.09	0.14	0.11	0.11	1.00	0.92	0.96	0.96	0.09	0.13	0.11	0.11	0.00	0.00	-0.02	-17.83
Nigeria	0.27	0.27	0.27	0.27	0.56	0.56	0.56	0.56	0.15	0.15	0.15	0.15	0.00	0.00	0.00	0.00
Uganda	0.10	0.10	0.10	0.10	1.49	1.49	1.49	1.49	0.15	0.15	0.15	0.15	0.00	0.00	0.00	0.00
Zimbabwe	0.25	0.24	0.24	0.24	0.33	0.34	0.34	0.34	0.08	0.08	0.08	0.08	0.00	0.00	0.00	0.00
Sudan	0.20	0.20	0.20	0.20	1.53	1.53	1.53	1.53	0.31	0.31	0.31	0.31	0.00	0.00	0.00	0.00
Mexico	0.15	0.20	0.13	0.13	2.71	2.70	2.43	2.34	0.42	0.54	0.32	0.31	-0.01	-2.85	-0.23	-43.15
Burma	0.16	0.15	0.16	0.16	0.81	0.76	1.25	1.25	0.13	0.11	0.19	0.19	0.00	0.00	0.08	70.18
Others	0.70	0.62	0.64	0.64	0.71	0.84	0.86	0.86	0.50	0.53	0.55	0.55	0.00	0.00	0.02	4.00

World and Selected Countries and Regions

Table 13 Peanut Area, Yield, and Production

Country / Region	Area (Million hectares)				Yield (Metric tons per hectare)				Production (Million metric tons)				Change in Production			
	2021/22	Prel. 2022/23	2023/24 Proj. Mar Apr		2021/22	Prel. 2022/23	2023/24 Proj. Mar Apr		2021/22	Prel. 2022/23	2023/24 Proj. Mar Apr		From last month MMT Percent		From last year MMT Percent	
World	30.70	28.89	29.50	29.50	1.69	1.71	1.71	1.71	51.97	49.36	50.46	50.46	0.00	0.00	1.10	2.22
United States	0.62	0.56	0.64	0.64	4.64	4.50	4.19	4.19	2.89	2.51	2.67	2.67	0.00	0.00	0.16	6.28
Total Foreign	30.07	28.33	28.87	28.87	1.63	1.65	1.66	1.66	49.08	46.85	47.79	47.79	0.00	0.00	0.94	2.00
China	4.81	4.68	4.82	4.82	3.81	3.91	3.86	3.86	18.31	18.33	18.60	18.60	0.00	0.00	0.27	1.47
Africa																
Nigeria	3.50	3.40	3.45	3.45	1.21	1.26	1.25	1.25	4.23	4.28	4.30	4.30	0.00	0.00	0.02	0.37
Sudan	3.94	3.00	3.00	3.00	0.60	0.83	0.83	0.83	2.36	2.50	2.50	2.50	0.00	0.00	0.00	0.00
Senegal	1.21	1.23	1.23	1.23	1.38	1.23	1.40	1.40	1.68	1.50	1.72	1.72	0.00	0.00	0.21	14.18
Cameroon	0.43	0.43	0.43	0.43	1.40	1.40	1.40	1.40	0.60	0.60	0.60	0.60	0.00	0.00	0.00	0.00
Ghana	0.34	0.37	0.37	0.37	1.48	1.65	1.62	1.62	0.50	0.61	0.60	0.60	0.00	0.00	-0.01	-1.80
Chad	0.75	0.76	0.76	0.76	1.06	1.10	1.09	1.09	0.80	0.83	0.83	0.83	0.00	0.00	0.00	0.12
Malawi	0.40	0.40	0.40	0.40	0.88	0.88	0.88	0.88	0.35	0.35	0.35	0.35	0.00	0.00	0.00	0.00
Congo (Kinshasa)	0.52	0.53	0.53	0.53	0.92	0.91	0.91	0.91	0.48	0.48	0.48	0.48	0.00	0.00	0.00	0.00
Niger	0.92	0.97	0.92	0.92	0.56	0.69	0.65	0.65	0.52	0.67	0.60	0.60	0.00	0.00	-0.07	-10.58
Mali	0.44	0.43	0.43	0.43	0.78	1.04	1.00	1.00	0.35	0.44	0.43	0.43	0.00	0.00	-0.02	-4.06
Uganda	0.39	0.35	0.35	0.35	0.65	0.57	0.57	0.57	0.25	0.20	0.20	0.20	0.00	0.00	0.00	0.00
Burkina Faso	0.58	0.63	0.64	0.64	0.83	0.89	0.90	0.90	0.48	0.56	0.58	0.58	0.00	0.00	0.02	2.86
Guinea	0.79	0.90	0.90	0.90	1.15	1.14	1.11	1.11	0.91	1.03	1.00	1.00	0.00	0.00	-0.03	-2.44
Egypt	0.06	0.06	0.06	0.06	3.42	3.20	3.20	3.20	0.21	0.21	0.21	0.21	0.00	0.00	0.00	0.00
Central African Republic	0.13	0.13	0.13	0.13	1.15	1.15	1.15	1.15	0.15	0.15	0.15	0.15	0.00	0.00	0.00	0.00
South Africa	0.04	0.03	0.04	0.04	1.51	2.26	2.00	2.00	0.07	0.07	0.08	0.08	0.00	0.00	0.01	14.29
Mozambique	0.38	0.38	0.38	0.38	0.34	0.34	0.34	0.34	0.13	0.13	0.13	0.13	0.00	0.00	0.00	0.00
Cote d'Ivoire	0.17	0.17	0.17	0.17	1.42	1.47	1.45	1.45	0.23	0.24	0.24	0.24	0.00	0.00	0.00	-1.23
Benin	0.17	0.17	0.18	0.18	1.05	0.96	0.97	0.97	0.18	0.16	0.18	0.18	0.00	0.00	0.01	6.71
South Asia																
India	5.71	4.96	5.30	5.30	1.52	1.27	1.21	1.21	8.70	6.30	6.40	6.40	0.00	0.00	0.10	1.59
Pakistan	0.15	0.13	0.13	0.13	0.94	0.88	0.88	0.88	0.15	0.12	0.12	0.12	0.00	0.00	0.00	0.00
Southeast Asia																
Indonesia	0.55	0.54	0.52	0.52	1.76	1.72	1.69	1.69	0.96	0.93	0.88	0.88	0.00	0.00	-0.05	-5.38
Burma	1.06	1.07	1.07	1.07	1.51	1.55	1.59	1.59	1.60	1.65	1.70	1.70	0.00	0.00	0.05	3.03
Vietnam	0.16	0.16	0.15	0.15	2.58	2.58	2.60	2.60	0.41	0.40	0.39	0.39	0.00	0.00	-0.01	-2.50
Thailand	0.02	0.02	0.02	0.02	1.67	1.67	1.67	1.67	0.04	0.04	0.04	0.04	0.00	0.00	0.00	0.00
South America																
Argentina	0.41	0.37	0.40	0.40	3.29	2.59	3.48	3.48	1.34	0.96	1.38	1.38	0.00	0.00	0.41	42.78
Brazil	0.22	0.22	0.24	0.24	4.09	4.05	3.79	3.79	0.90	0.89	0.89	0.89	0.00	0.00	0.00	0.00
Mexico	0.06	0.05	0.05	0.05	1.63	1.76	1.74	1.74	0.10	0.09	0.09	0.09	0.00	0.00	0.01	6.98
Others	1.78	1.80	1.81	1.81	1.20	1.18	1.19	1.19	2.13	2.13	2.15	2.15	0.00	0.00	0.02	1.03

Table 14 Sunflowerseed Area, Yield, and Production

Country / Region	Area (Million hectares)				Yield (Metric tons per hectare)				Production (Million metric tons)				Change in Production						
	2021/22	Prel.		2023/24 Proj.		2021/22	Prel.		2023/24 Proj.		2021/22	Prel.		2023/24 Proj.		From last month		From last year	
		2022/23	Mar	Apr	2022/23		Mar	Apr	2022/23	Mar		Apr	MMT	Percent	MMT	Percent			
World	28.54	28.29	27.73	27.60	1.99	1.87	1.98	1.99	56.85	52.77	54.91	54.80	-0.11	-0.20	2.03	3.85			
United States	0.50	0.65	0.51	0.51	1.71	1.97	2.00	2.00	0.86	1.27	1.03	1.03	0.00	0.00	-0.25	-19.39			
Total Foreign	28.03	27.64	27.21	27.08	2.00	1.86	1.98	1.99	55.99	51.50	53.89	53.78	-0.11	-0.21	2.28	4.43			
Former Soviet Union - 12																			
Russia	9.61	9.11	9.30	9.30	1.62	1.78	1.84	1.84	15.57	16.25	17.10	17.10	0.00	0.00	0.85	5.20			
Ukraine	7.10	5.70	6.00	6.00	2.46	2.14	2.42	2.42	17.50	12.20	14.50	14.50	0.00	0.00	2.30	18.85			
Kazakhstan	0.94	1.09	1.13	1.13	1.10	1.20	1.10	1.10	1.03	1.30	1.24	1.24	0.00	0.00	-0.07	-5.21			
European Union	4.37	4.97	4.90	4.80	2.36	1.89	2.08	2.08	10.33	9.39	10.20	10.00	-0.20	-1.96	0.62	6.55			
South America																			
Argentina	1.96	2.45	2.00	2.00	2.07	2.05	2.05	2.05	4.05	5.02	4.10	4.10	0.00	0.00	-0.92	-18.31			
Uruguay	0.01	0.01	0.01	0.01	2.00	0.91	0.92	0.92	0.01	0.01	0.01	0.01	0.00	0.00	0.00	10.00			
Bolivia	0.16	0.23	0.24	0.24	1.32	1.39	1.38	1.38	0.21	0.32	0.33	0.33	0.00	0.00	0.01	3.13			
Brazil	0.04	0.04	0.04	0.04	1.03	1.56	1.55	1.55	0.04	0.06	0.07	0.07	0.00	0.00	0.00	1.56			
Paraguay	0.03	0.03	0.02	0.02	1.84	1.64	1.63	1.63	0.05	0.04	0.04	0.04	0.00	0.00	0.00	-4.88			
China	0.70	0.62	0.60	0.60	3.06	2.79	2.83	2.83	2.15	1.74	1.70	1.70	0.00	0.00	-0.04	-2.35			
South Asia																			
India	0.27	0.36	0.15	0.15	0.52	0.59	0.75	0.75	0.14	0.22	0.11	0.11	0.00	0.00	-0.10	-47.91			
Pakistan	0.05	0.07	0.10	0.08	1.58	1.72	1.35	1.35	0.08	0.12	0.14	0.11	-0.03	-20.00	-0.02	-12.90			
Middle East																			
Turkey	0.76	0.79	0.70	0.70	2.30	2.41	2.21	2.21	1.75	1.90	1.55	1.55	0.00	0.00	-0.35	-18.42			
Iran	0.04	0.04	0.04	0.04	1.00	1.02	1.05	1.05	0.04	0.04	0.04	0.04	0.00	0.00	0.00	-2.27			
Israel	0.00	0.00	0.00	0.00	2.00	2.00	4.00	4.00	0.00	0.00	0.00	0.00	0.00	0.00	0.00	100.00			
Africa																			
Egypt	0.01	0.02	0.02	0.02	2.38	2.53	2.50	2.50	0.02	0.04	0.05	0.05	0.00	0.00	0.01	31.58			
Morocco	0.02	0.03	0.02	0.02	1.56	1.11	1.27	1.27	0.03	0.03	0.03	0.03	0.00	0.00	0.00	-6.67			
South Africa	0.67	0.56	0.62	0.53	1.26	1.30	1.09	1.11	0.85	0.72	0.67	0.59	-0.08	-11.94	-0.13	-18.51			
Burma	0.60	0.60	0.60	0.60	0.65	0.65	0.65	0.65	0.39	0.39	0.39	0.39	0.00	0.00	0.00	0.00			
Canada	0.04	0.04	0.04	0.04	2.03	2.21	2.30	2.30	0.08	0.08	0.09	0.09	0.00	0.00	0.01	9.52			
Australia	0.02	0.03	0.03	0.03	1.58	1.48	1.48	1.28	0.03	0.04	0.04	0.03	-0.01	-13.51	-0.01	-13.51			
Others	0.63	0.86	0.66	0.73	2.59	1.83	2.28	2.32	1.64	1.57	1.50	1.70	0.20	13.38	0.13	7.96			

World and Selected Countries and Regions

Table 15 Rapeseed Area, Yield, and Production

Country / Region	Area (Million hectares)				Yield (Metric tons per hectare)				Production (Million metric tons)				Change in Production			
	2021/22	Prel.	2023/24 Proj.		2021/22	Prel.	2023/24 Proj.		2021/22	Prel.	2023/24 Proj.		From last month		From last year	
		2022/23	Mar	Apr		2022/23	Mar	Apr		2022/23	Mar	Apr	MMT	Percent	MMT	Percent
World	38.45	41.95	42.53	42.50	1.97	2.12	2.07	2.08	75.82	88.83	88.07	88.39	0.32	0.36	-0.44	-0.50
United States	0.85	0.88	0.94	0.94	1.46	1.98	2.01	2.01	1.24	1.74	1.90	1.90	0.00	0.00	0.16	8.97
Total Foreign	37.61	41.07	41.59	41.55	1.98	2.12	2.07	2.08	74.58	87.09	86.17	86.49	0.32	0.37	-0.60	-0.69
European Union	5.36	5.92	6.29	6.22	3.24	3.31	3.18	3.22	17.35	19.61	20.00	20.00	0.00	0.00	0.39	1.97
United Kingdom	0.31	0.36	0.39	0.39	3.20	3.74	3.14	3.14	0.98	1.36	1.23	1.23	0.00	0.00	-0.14	-9.99
Switzerland	0.02	0.02	0.02	0.02	3.14	3.14	3.14	3.14	0.07	0.07	0.07	0.07	0.00	0.00	0.00	0.00
Canada	8.95	8.60	8.86	8.86	1.59	2.17	2.12	2.12	14.25	18.70	18.80	18.80	0.00	0.00	0.11	0.56
China	6.99	7.25	7.35	7.35	2.10	2.14	2.10	2.10	14.71	15.53	15.40	15.40	0.00	0.00	-0.13	-0.84
South Asia																
India	7.99	8.85	9.25	9.25	1.39	1.28	1.35	1.35	11.10	11.30	12.50	12.50	0.00	0.00	1.20	10.62
Pakistan	0.32	0.51	0.43	0.38	1.50	1.46	1.53	1.46	0.48	0.74	0.65	0.56	-0.09	-14.31	-0.19	-24.93
Bangladesh	0.61	0.81	0.80	0.80	1.35	1.30	1.29	1.29	0.82	1.05	1.03	1.03	0.00	0.00	-0.02	-1.90
Former Soviet Union - 12																
Russia	1.62	2.27	2.05	2.05	1.71	1.89	2.05	2.05	2.78	4.30	4.20	4.20	0.00	0.00	-0.10	-2.33
Ukraine	1.04	1.23	1.50	1.50	2.91	2.85	2.93	2.93	3.02	3.50	4.40	4.40	0.00	0.00	0.90	25.71
Belarus	0.39	0.36	0.40	0.40	1.83	2.22	2.25	2.25	0.72	0.80	0.90	0.90	0.00	0.00	0.10	12.50
Kazakhstan	0.12	0.13	0.09	0.09	1.24	1.48	1.32	1.32	0.15	0.19	0.12	0.12	0.00	0.00	-0.07	-34.92
Australia	3.25	3.90	3.50	3.50	2.10	2.12	1.57	1.63	6.82	8.27	5.50	5.70	0.20	3.64	-2.57	-31.10
South America																
Chile	0.04	0.03	0.04	0.04	3.86	3.79	3.82	3.82	0.14	0.13	0.15	0.15	0.00	0.00	0.02	16.00
Paraguay	0.07	0.07	0.07	0.07	1.40	1.77	1.50	1.50	0.09	0.12	0.11	0.11	0.00	0.00	-0.01	-8.70
Ethiopia	0.03	0.03	0.03	0.03	1.80	1.80	1.80	1.80	0.05	0.05	0.05	0.05	0.00	0.00	0.00	0.00
Others	0.52	0.72	0.53	0.61	2.09	1.91	2.03	2.13	1.08	1.38	1.08	1.29	0.21	19.43	-0.09	-6.58

World and Selected Countries and Regions

Table 16 Copra, Palm Kernel, and Palm Oil Production

Country / Region	Production (Million metric tons)				Change in Production			
	2021/22	Prel.	2023/24 Proj.		From last month		From last year	
		2022/23	Mar	Apr	MMT	Percent	MMT	Percent
Oilseed, Copra								
Philippines	2.60	2.60	2.70	2.70	0.00	0.00	0.10	3.85
Indonesia	1.68	1.68	1.69	1.69	0.00	0.00	0.01	0.60
India	0.94	0.94	0.94	0.94	0.00	0.00	0.00	0.00
Vietnam	0.29	0.29	0.29	0.29	0.00	0.00	0.00	0.00
Papua New Guinea	0.09	0.10	0.11	0.09	-0.02	-18.18	-0.01	-10.00
Sri Lanka	0.11	0.07	0.07	0.07	0.00	0.00	0.00	0.00
Thailand	0.07	0.07	0.07	0.07	0.00	0.00	0.00	0.00
Mexico	0.05	0.05	0.05	0.05	0.00	0.00	0.00	0.00
Solomon Islands	0.03	0.03			0.00	0.00	-0.03	0.00
Cote d'Ivoire	0.03	0.03	0.03	0.03	0.00	0.00	0.00	0.00
World	6.03	6.00	6.03	6.01	-0.02	-0.33	0.01	0.17
Oilseed, Palm Kernel								
Indonesia	11.20	12.00	12.20	12.20	0.00	0.00	0.20	1.67
Malaysia	4.45	4.49	4.70	4.70	0.00	0.00	0.21	4.68
Nigeria	0.90	0.90	1.10	1.10	0.00	0.00	0.20	22.22
Thailand	0.83	0.86	0.86	0.86	0.00	0.00	0.00	0.00
Colombia	0.32	0.33	0.35	0.35	0.00	0.00	0.02	6.06
Guatemala	0.18	0.18	0.18	0.18	0.00	0.00	0.00	0.00
Papua New Guinea	0.17	0.17	0.18	0.18	0.00	0.00	0.01	5.88
Honduras	0.16	0.16	0.16	0.16	0.00	0.00	0.00	0.00
Brazil	0.15	0.15	0.16	0.16	0.00	0.00	0.01	6.67
Cameroon	0.15	0.15	0.15	0.15	0.00	0.00	0.00	0.00
World	19.14	20.07	20.71	20.71	0.00	0.00	0.64	3.19
Oil, Palm								
Indonesia	42.00	46.50	47.00	47.00	0.00	0.00	0.50	1.08
Malaysia	18.15	18.39	19.00	19.00	0.00	0.00	0.61	3.32
Thailand	3.38	3.42	3.45	3.45	0.00	0.00	0.03	0.88
Colombia	1.76	1.80	1.90	1.90	0.00	0.00	0.10	5.56
Nigeria	1.40	1.40	1.50	1.50	0.00	0.00	0.10	7.14
Guatemala	0.88	0.91	0.92	0.92	0.00	0.00	0.01	1.10
Papua New Guinea	0.77	0.80	0.80	0.82	0.02	2.50	0.02	2.50
Cote d'Ivoire	0.58	0.60	0.60	0.60	0.00	0.00	0.00	0.00
Honduras	0.60	0.60	0.60	0.60	0.00	0.00	0.00	0.00
Brazil	0.55	0.57	0.59	0.59	0.00	0.00	0.01	1.75
World	73.01	78.08	79.46	79.48	0.02	0.03	1.40	1.79

World and Selected Countries and Regions

Table 17 Cotton Area, Yield, and Production

Country / Region	Area (Million hectares)				Yield (Kilograms per hectare)				Production (Million 480 lb. bales)				Change in Production			
	2021/22	Prel. 2022/23	2023/24 Proj. Mar Apr		2021/22	Prel. 2022/23	2023/24 Proj. Mar Apr		2021/22	Prel. 2022/23	2023/24 Proj. Mar Apr		From last month MBales Percent		From last year MBales Percent	
World	27.84	27.32	31.71	0.00	797	838	776	0	101.97	105.21	112.96	0.00	-112.96	-100.00	-105.21	-100.00
United States	4.15	2.95	2.86	0.00	919	1,068	921	0	17.52	14.47	12.10	0.00	-12.10	-100.00	-14.47	-100.00
Total Foreign	23.69	24.37	28.85	0.00	776	811	761	0	84.45	90.74	100.86	0.00	-100.86	-100.00	-90.74	-100.00
South Asia																
India	12.37	12.93	12.70	0.00	428	443	437	0	24.30	26.30	25.50	0.00	-25.50	-100.00	-26.30	-100.00
Pakistan	0.00	0.00	2.40	0.00	0	0	608	0	0.00	0.00	6.70	0.00	-6.70	-100.00	0.00	100.00
China	3.10	3.15	2.90	0.00	1,882	2,122	2,065	0	26.80	30.70	27.50	0.00	-27.50	-100.00	-30.70	-100.00
South America																
Brazil	1.37	1.60	1.66	0.00	1,720	1,595	1,910	0	10.82	11.72	14.56	0.00	-14.56	-100.00	-11.72	-100.00
Argentina	0.48	0.51	0.56	0.00	658	495	622	0	1.45	1.17	1.60	0.00	-1.60	-100.00	-1.17	-100.00
Paraguay	0.02	0.05	0.06	0.00	527	890	812	0	0.05	0.18	0.21	0.00	-0.21	-100.00	-0.18	-100.00
Africa																
Burkina Faso	0.00	0.00	0.54	0.00	0	0	313	0	0.00	0.00	0.77	0.00	-0.77	-100.00	0.00	100.00
Mali	0.72	0.60	0.71	0.00	432	269	399	0	1.43	0.74	1.30	0.00	-1.30	-100.00	-0.74	-100.00
Cote d'Ivoire	0.47	0.41	0.40	0.00	486	236	411	0	1.05	0.45	0.75	0.00	-0.75	-100.00	-0.45	-100.00
Benin	0.00	0.00	0.51	0.00	0	0	446	0	0.00	0.00	1.05	0.00	-1.05	-100.00	0.00	100.00
Egypt	0.09	0.14	0.11	0.00	717	661	693	0	0.28	0.43	0.35	0.00	-0.35	-100.00	-0.43	-100.00
Cameroon	0.23	0.23	0.25	0.00	606	563	587	0	0.64	0.60	0.66	0.00	-0.66	-100.00	-0.60	-100.00
Tanzania	0.34	0.36	0.47	0.00	164	184	220	0	0.26	0.31	0.47	0.00	-0.47	-100.00	-0.31	-100.00
Nigeria	0.27	0.27	0.27	0.00	282	282	282	0	0.35	0.35	0.35	0.00	-0.35	-100.00	-0.35	-100.00
Zimbabwe	0.25	0.24	0.24	0.00	191	195	195	0	0.22	0.22	0.22	0.00	-0.22	-100.00	-0.22	-100.00
Ethiopia	0.05	0.05	0.06	0.00	687	726	713	0	0.16	0.18	0.18	0.00	-0.18	-100.00	-0.18	-100.00
Former Soviet Union - 12																
Uzbekistan	0.00	0.00	1.03	0.00	0	0	613	0	0.00	0.00	2.90	0.00	-2.90	-100.00	0.00	100.00
Turkmenistan	0.55	0.55	0.55	0.00	356	356	356	0	0.90	0.90	0.90	0.00	-0.90	-100.00	-0.90	-100.00
Tajikistan	0.17	0.17	0.19	0.00	608	615	647	0	0.48	0.48	0.57	0.00	-0.57	-100.00	-0.48	-100.00
Kazakhstan	0.11	0.00	0.12	0.00	467	0	490	0	0.24	0.00	0.27	0.00	-0.27	-100.00	0.00	100.00
Middle East																
Turkey	0.45	0.56	0.44	0.00	1,839	1,922	1,583	0	3.80	4.90	3.20	0.00	-3.20	-100.00	-4.90	-100.00
Syria	0.03	0.03	0.03	0.00	1,132	1,132	1,132	0	0.13	0.13	0.13	0.00	-0.13	-100.00	-0.13	-100.00
Iran	0.10	0.10	0.10	0.00	871	871	762	0	0.40	0.40	0.35	0.00	-0.35	-100.00	-0.40	-100.00
Australia	0.64	0.65	0.52	0.00	2,006	1,943	2,029	0	5.85	5.80	4.80	0.00	-4.80	-100.00	-5.80	-100.00
Mexico	0.00	0.00	0.13	0.00	0	0	1,549	0	0.00	0.00	0.93	0.00	-0.93	-100.00	0.00	100.00
Burma	0.16	0.15	0.16	0.00	660	653	660	0	0.48	0.45	0.47	0.00	-0.47	-100.00	-0.45	-100.00
Others	1.74	1.64	1.79	0.00	548	580	512	0	4.38	4.36	4.20	0.00	-4.20	-100.00	-4.36	-100.00

World and Selected Countries and Regions

TABLE 18

The table below presents a record of the April projection and the final Estimate. Using world wheat production as an example, the "root mean square error" means that chances are 2 out of 3 that the current forecast will not be above or below the final estimate by more than 0.5 percent. Chances are 9 out of 10 (90% confidence level) that the difference will not exceed 0.8 percent. The average difference between the April projection and the final estimate is 1.9 million tons, ranging from 0.1 million to 6.8 million tons. The April projection has been below the estimate 28 times and above 14 times.

RELIABILITY OF PRODUCTION PROJECTIONS 1/

COMMODITY AND REGION	Root mean square error	90 percent confidence interval	Difference between forecast and final estimate				
			Average	Smallest	Largest	Years	
						Below final	Above final
	Percent		---Million metric tons---				
WHEAT							
World	0.5	0.8	1.9	0.1	6.8	28	14
U.S.	0.2	0.3	0.1	0.0	0.3	19	11
Foreign	0.5	0.9	1.9	0.2	6.8	28	14
COARSE GRAINS 2/							
World	1.0	1.8	9.1	0.3	42.1	34	8
U.S.	0.2	0.3	0.2	0.0	1.8	17	11
Foreign	1.5	2.5	9.2	0.3	42.1	34	8
RICE (Milled)							
World	1.2	2.1	3.3	0.0	13.3	34	8
U.S.	1.3	2.2	0.0	0.0	0.2	11	5
Foreign	1.3	2.1	3.3	0.0	13.3	34	8
SOYBEANS							
World	1.6	2.7	2.6	0.2	7.9	25	17
U.S.	1.3	2.3	0.7	0.0	3.2	18	17
Foreign	2.6	4.4	2.3	0.0	8.1	27	15
COTTON			---Million 480-lb. bales---				
World	1.6	2.8	1.2	0.0	5.2	30	11
U.S.	0.4	0.7	0.0	0.0	0.2	17	17
Foreign	2.0	3.3	1.2	0.0	5.1	29	12
UNITED STATES			-----Million bushels-----				
<i>CORN</i>	0.2	0.3	6	0	72	1	6
<i>SORGHUM</i>	0.1	0.2	0	0	4	0	2
<i>BARLEY</i>	0.9	1.6	1	0	11	21	4
<i>OATS</i>	0.4	0.7	0	0	2	5	4

1/ Marketing years 1981/82 through 2022/23 for grains, soybeans, and cotton. Final for grains, soybeans, and cotton is defined as the first November estimate following the marketing year for 1981/82 through 2021/22, and for 2022/23 the last month's estimate.

2/ Includes corn, sorghum, barley, oats, rye, millet, and mixed grain

April 2024

Global Market Analysis, FAS, USDA