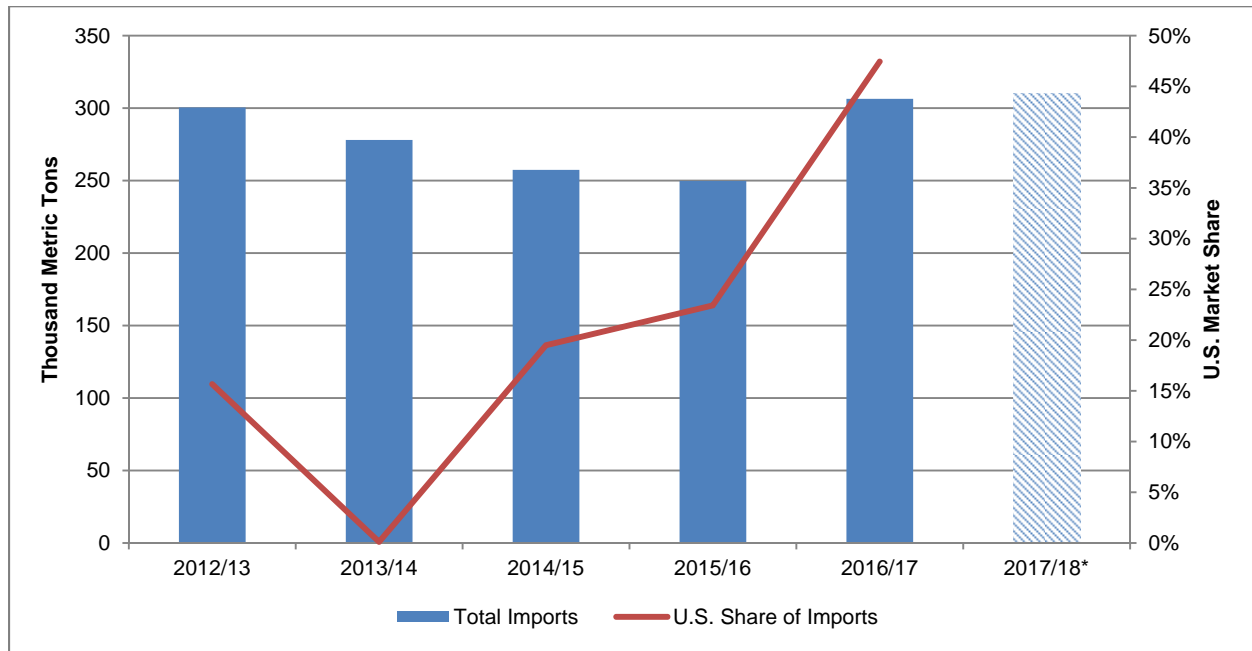




# Oilseeds: World Markets and Trade

## United States Boosts Share in South Korea's Soybean Oil Market



South Korea continues to be a key agricultural market for U.S. exporters; it is the fifth largest market reaching over \$6.8 billion in 2017. With livestock, grains, and horticultural products leading the way, South Korea has also rebounded from a relatively lean period, importing over \$200 million in soybean oil and \$600 million in all oilseeds and products.

In particular, the soybean oil market has been a great success story for U.S. agriculture. Korean imports of soybean oil have been largely supplied by price-competitive Argentina, followed by the United States and regional suppliers such as Vietnam and Thailand. Historically, the United States has maintained a relatively small market share, reaching 23 percent in 2015/16. In 2016/17 the U.S. market share jumped to 45 percent, which translates to an additional \$80 million increase in exports compared to 2015/16.

Several factors have contributed to the higher U.S. share. The domestic market is quite competitive and price sensitive, but recent FAS reports (GAIN Report KS1801 of Jan 17 2018) show that end users are becoming more appreciative of the qualitative characteristics of U.S. soybean oil, such as taste and color. Most notably, the golden color of U.S. soybean oil is a key factor in U.S. products being preferred over Argentine, which reportedly have a red tint. Additionally, due to the United States-Korea Free Trade Agreement, U.S. producers have an increasing edge in tariffs over their Argentine counterparts, as Argentina faces a tariff rate of 5.0 percent compared to the 2.2 percent for U.S. exporters. Soybean oil tariffs will continue to decrease until phased out in 2022, underpinning the price competitiveness of U.S. products. While this may seem small in percentage points, it can be a key decision factor in the crude soybean oil market where margins are thin.

On the global level, the dynamics of the soybean oil market may change. Rapidly changing policies, especially in the European and U.S. biodiesel markets, could alter incentives for Argentine soybean oil producers and increase competitive pressure in the Korean market. However, the promising first quarter of MY2017/18 (Oct/Sep basis) for exports of U.S. soybean oil, coupled with the aforementioned favorable micro- and macro-economic factors, suggest another strong year for U.S. soybean oil exports to Korea.

## Aquaculture: A Growing Opportunity for Soy

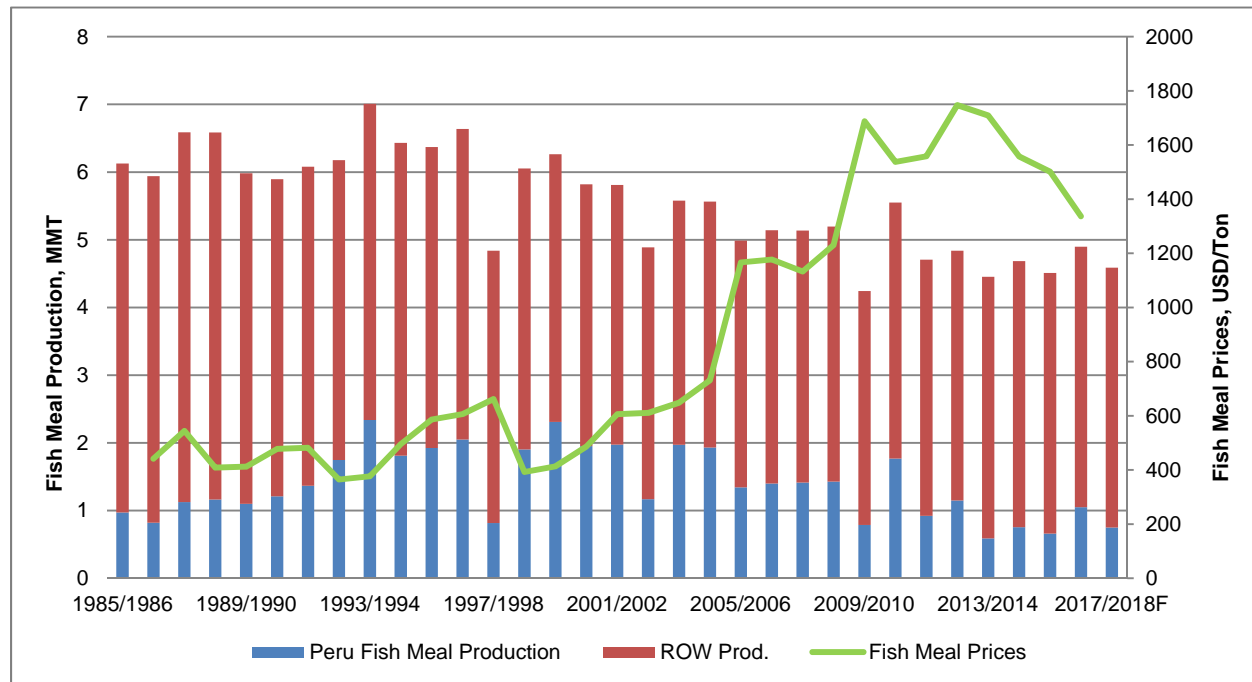


Figure 1: Fish Meal Production and Prices

Fishmeal is considered a premium feed ingredient due to its nutritional value and ease of digestion for most animals, especially in aquaculture. The energy and protein content of fishmeal makes it a very coveted product in the feed ingredient market, which is also reflected in its high price. Due to the nature of fishmeal production, which is limited by catch quotas and weather trends, prices of fishmeal correlate closely to the level of output. As seen in Figure 1, prices have had an inverse relationship with Peru fishmeal production, as it is the largest producer in the world. Hence, global fishmeal prices rise when Peru's production is falling, and drop when production is rising.

Recently, however, fishmeal prices have been tracking more closely to that of soybean meal. Fishmeal prices are increasingly independent of corresponding changes in global fishmeal production, especially after 2014 where prices surpassed \$2,000/ton. In addition, fishmeal prices have been showing a steady decline, averaging around \$1,300/ton in 2017, which closely follows the downward movement in soybean meal prices.

A large part of this change in price dynamics is due to newer methods that are being introduced to utilize soybean meal in aquaculture, such as pelletized soybean concentrate and intensive pond aquaculture (IPA). IPA allows high yield, year-round production of aquaculture, which has in turn increased the demand for fish feed. As global aquaculture production growth outpaces the

availability of fishmeal supplies, soybean meal has been fulfilling the need for alternative protein feed ingredients, especially after promising results from trial runs conducted by USSEC and researchers. The U.S. Food and Drug Administration's 2017 approval of taurine in fish feed, which allows augmenting plant-based feed with crucial ingredients for aquaculture, also opens up new opportunities for soybean meal in aquaculture.

This trend can be also seen in the steady reduction in the global fishmeal/soybean feed ratio, adjusted for protein content. Based on USDA data, global soybean meal feeding was roughly 10 times of fishmeal feeding in 1987, now it is estimated to be 50 times more in 2017. The same market shifts can be found in leading fishmeal consuming countries as well, such as China and the European Union. With an increasing global supply and rising affordability, soybean meal seems to be increasingly more popular in aquaculture, as supported by USDA data showing rising consumption.

Due to its unique characteristic of high protein and strong appeal in niche markets, demand for fishmeal appears to be firm. Going forward, however, limited growth in fish catch, improved applications of soybean meal, and relatively low prices are expected to increase opportunities for soybean meal exporters.

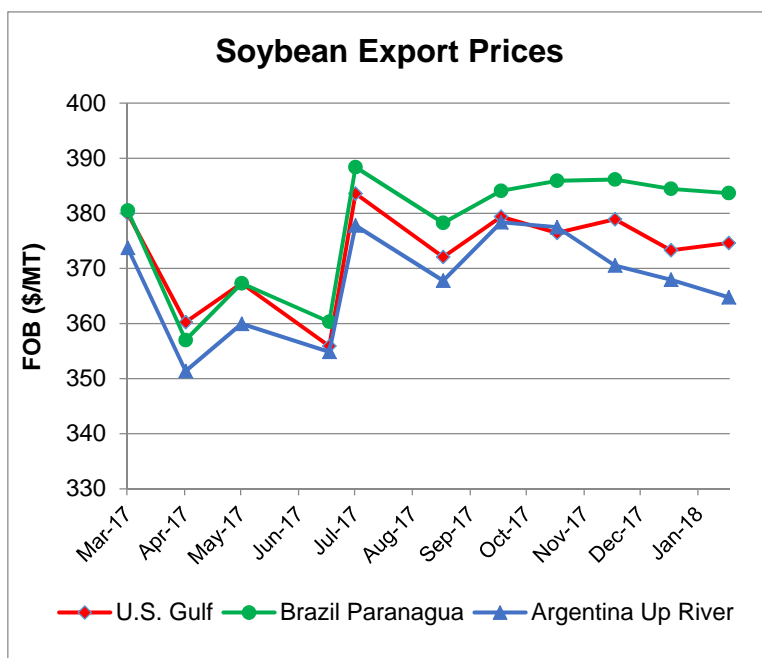
## OVERVIEW

Global oilseed production is forecast lower this month at 579 million tons. Soybean production is down in Argentina, Bolivia, and India, more than offsetting higher Brazil production. Production estimates for cottonseed are up slightly, with a larger crop in China more than offsetting a lower crop in India. Sunflowerseed production is down slightly on smaller prospects for South Africa. Soybean exports are down this month, with lower U.S. exports more than offsetting larger shipments for Brazil. Global ending stocks for soybeans are down this month, with lower production counterbalancing smaller trade. The U.S. season-average farm price for soybeans is unchanged at \$9.30 per bushel.

## SOYBEAN PRICES

U.S. export bids in January, FOB Gulf, averaged \$375/ton, up \$1 from the previous month. In comparison, FOB Brazil Paranagua averaged \$384/ton, unchanged from last month. FOB Argentina Up River averaged \$365/ton, down \$3 from last month. Prices in the United States recovered slightly as commodity prices rose due to bullish macroeconomic sentiments and currency expectations.

For the week ending January 25, U.S. 2017/18 soybean export commitments (outstanding sales plus accumulated exports) to China totaled 26.2 million tons compared with 33.3 million a year ago. Total commitments to the world are 43.6 million tons, compared with 50.4 million for the same period last year.



## 2017/18 OUTLOOK CHANGES

Country	Commodity	Attribute	Previous	Current	Change	Reason
<b>United States</b>	Soybean Oilseed	Exports	58,786	<b>57,153</b>	<b>-1,633</b>	Stronger-than-expected competition from South America during first quarter of the marketing year
	Rapeseed Meal	Imports	3,545	<b>3,364</b>	<b>-181</b>	On early season trade trends
<b>Argentina</b>	Soybean Oil	Exports	5,600	<b>5,500</b>	<b>-100</b>	Slow pace of early season trade
<b>Bolivia</b>	Soybean Oilseed	Exports	400	<b>100</b>	<b>-300</b>	Reduced supply with smaller harvest
<b>Brazil</b>	Soybean Oilseed	Exports	67,000	<b>69,000</b>	<b>2,000</b>	Record trade to date and larger 2018 harvest
<b>Colombia</b>	Palm Oil	Exports	470	<b>650</b>	<b>180</b>	Increased supplies from higher yields
	Soybean Meal	Exports	1,800	<b>1,700</b>	<b>-100</b>	On reduced price competitiveness and limited regional demand
<b>India</b>	Palm Oil	Imports	10,200	<b>10,600</b>	<b>400</b>	On higher affordability and price-competitiveness of palm oil, resulting from reduced Argentine supplies and higher import tariffs
	Soybean Oil	Imports	3,800	<b>3,645</b>	<b>-155</b>	
<b>Moldova</b>	Sunflowerseed Oilseed	Exports	350	<b>450</b>	<b>100</b>	Increased supplies with larger production
<b>Paraguay</b>	Soybean Oilseed	Exports	6,000	<b>5,800</b>	<b>-200</b>	Larger supplies with smaller crop
<b>Philippines</b>	Palm Oil	Imports	950	<b>1,100</b>	<b>150</b>	In line with changes in 2016/17 trade estimates
<b>Ukraine</b>	Soybean Oilseed	Exports	2,500	<b>2,400</b>	<b>-100</b>	On lower crop estimate and early season pace

Note : All figures are in thousand metric tons. All changes based on trade trends and estimates unless stated otherwise.

## Questions may be directed to:

Bill George	(202) 720-6234	<a href="mailto:Bill.George@fas.usda.gov">Bill.George@fas.usda.gov</a>
Agata Kingsbury	(202) 260-8910	<a href="mailto:Agata.Kingsbury@fas.usda.gov">Agata.Kingsbury@fas.usda.gov</a>
Justin Choe	(202) 690-4062	<a href="mailto:Justin.Cho@fas.usda.gov">Justin.Cho@fas.usda.gov</a>
Christine Mumma	(202) 720-6369	<a href="mailto:Christine.Mumma@fas.usda.gov">Christine.Mumma@fas.usda.gov</a>

**To download the tables in the publication,** go to the Production, Supply and Distribution Database (PSD Online): (<https://apps.fas.usda.gov/psdonline/app/index.html#/app/downloads>), select PSD Reports, and then on the left click Oilseeds. The Foreign Agricultural Service (FAS) updates its production, supply and distribution (PSD) database for cotton, oilseeds, and grains at 12:00 p.m. on the day the *World Agricultural Supply and Demand Estimates* (WASDE) report is released.

This circular is released by 12:15 p.m.

## FAS Reports and Databases:

Current *World Markets and Trade* and *World Agricultural Production* Reports:

<https://apps.fas.usda.gov/psdonline/app/index.html#/app/downloads>

Archives *World Markets and Trade* and *World Agricultural Production* Reports:

<http://usda.mannlib.cornell.edu/MannUsda/viewTaxonomy.do?taxonomyID=7>

Production, Supply and Distribution Database (PSD Online):

<https://apps.fas.usda.gov/psdonline/app/index.html#/app/home>

Global Agricultural Trade System (U.S. Exports and Imports):

<http://apps.fas.usda.gov/gats/default.aspx>

Export Sales Report:

<http://apps.fas.usda.gov/esrquery/>

Global Agricultural Information Network (Agricultural Attaché Reports):

<http://gain.fas.usda.gov/Pages/Default.aspx>

## Other USDA Reports:

World Agricultural Supply and Demand Estimates (WASDE):

<http://www.usda.gov/oce/commodity/wasde/>

Economic Research Service:

<http://www.ers.usda.gov/topics/crops>

National Agricultural Statistics Service:

<http://www.nass.usda.gov/Publications/>

## List of Tables

### **SUMMARY TABLES**

Table 01	Major Oilseeds: World Supply and Distribution (Commodity View)
Table 02	Major Protein Meals: World Supply and Distribution (Commodity View)
Table 03	Major Vegetable Oils: World Supply and Distribution (Commodity View)
Table 04	Major Oilseeds: World Supply and Distribution (Country View)
Table 05	Major Protein Meals: World Supply and Distribution (Country View)
Table 06	Major Vegetable Oils: World Supply and Distribution (Country View)

### **COMMODITY TABLES**

Table 07	Soybeans: World Supply and Distribution
Table 08	Soybean Meal: World Supply and Distribution
Table 09	Soybean Oil: World Supply and Distribution
Table 10	Soybeans and Products: World Trade
Table 11	Palm Oil: World Supply and Distribution
Table 12	Rapeseed and Products: World Supply and Distribution
Table 13	Sunflowerseed and Products: World Supply and Distribution
Table 14	Minor Vegetable Oils: World Supply and Distribution

### **HISTORICAL TABLES**

Table 15	World Oilseeds and Products Supply and Distribution
Table 16	World Soybeans and Products Supply and Distribution
Table 17	World Rapeseed and Products Supply and Distribution
Table 18	World Sunflowerseed and Products Supply and Distribution
Table 19	World Palm Oil, Coconut Oil, and Fish Meal Supply and Distribution

### **COUNTRY TABLES**

Table 20	United States Oilseeds and Products Supply and Distribution (Local Marketing Years)
Table 21	United States Soybeans and Products Supply and Distribution (Local Marketing Years)
Table 22	Brazil Soybeans and Products Supply and Distribution Local Marketing Years
Table 23	Argentina Soybeans and Products Supply and Distribution Local Marketing Years
Table 24	South East Asia Oilseeds and Products Supply and Distribution
Table 25	Middle East Oilseeds and Products Supply and Distribution
Table 26	European Union Oilseeds and Products Supply and Distribution
Table 27	China Oilseeds and Products Supply and Distribution
Table 28	India Oilseeds and Products Supply and Distribution

### **PRICES**

Table 29	Oilseed Prices
Table 30	Protein Meal Prices
Table 31	Vegetable Oil Prices

**Table 01: Major Oilseeds: World Supply and Distribution (Commodity View)**

Million Metric Tons

	2013/14	2014/15	2015/16	2016/17	Jan 2017/18	Feb 2017/18
<b>Production</b>						
Oilseed, Copra	5.42	5.42	5.32	5.41	5.54	5.54
Oilseed, Cottonseed	45.04	44.43	35.77	39.01	44.36	44.58
Oilseed, Palm Kernel	15.94	16.56	15.96	17.30	18.53	18.59
Oilseed, Peanut	41.87	40.45	40.42	43.05	44.15	44.12
Oilseed, Rapeseed	71.68	71.45	69.96	71.26	73.09	73.10
Oilseed, Soybean	282.75	320.02	313.77	351.32	348.57	346.92
Oilseed, Sunflowerseed	41.54	39.25	40.30	47.61	45.84	45.77
<b>Total</b>	<b>504.22</b>	<b>537.58</b>	<b>521.50</b>	<b>574.97</b>	<b>580.08</b>	<b>578.62</b>
<b>Imports</b>						
Oilseed, Copra	0.09	0.10	0.13	0.13	0.08	0.08
Oilseed, Cottonseed	0.78	0.68	0.68	0.96	1.03	1.01
Oilseed, Palm Kernel	0.06	0.07	0.06	0.06	0.07	0.07
Oilseed, Peanut	2.39	2.52	3.31	2.99	3.17	3.18
Oilseed, Rapeseed	15.55	14.32	14.42	15.65	16.44	16.43
Oilseed, Soybean	113.07	124.36	133.33	144.25	150.17	150.24
Oilseed, Sunflowerseed	1.62	1.56	1.87	2.12	1.78	1.84
<b>Total</b>	<b>133.57</b>	<b>143.60</b>	<b>153.79</b>	<b>166.16</b>	<b>172.73</b>	<b>172.83</b>
<b>Exports</b>						
Oilseed, Copra	0.11	0.11	0.11	0.15	0.10	0.10
Oilseed, Cottonseed	0.94	0.72	0.69	0.91	1.03	1.03
Oilseed, Palm Kernel	0.04	0.04	0.04	0.08	0.05	0.05
Oilseed, Peanut	2.90	3.30	3.53	3.63	4.05	4.04
Oilseed, Rapeseed	15.10	15.11	14.35	15.90	16.71	16.73
Oilseed, Soybean	112.72	126.22	132.55	147.22	152.19	151.95
Oilseed, Sunflowerseed	1.96	1.66	2.01	2.48	1.86	1.96
<b>Total</b>	<b>133.77</b>	<b>147.15</b>	<b>153.28</b>	<b>170.38</b>	<b>175.97</b>	<b>175.85</b>
<b>Crush</b>						
Oilseed, Copra	5.40	5.38	5.32	5.36	5.48	5.48
Oilseed, Cottonseed	34.22	33.84	28.39	29.19	33.29	33.37
Oilseed, Palm Kernel	15.85	16.50	15.89	17.17	18.43	18.49
Oilseed, Peanut	17.70	16.77	16.82	18.19	18.29	18.27
Oilseed, Rapeseed	66.86	67.58	68.00	69.28	69.31	69.59
Oilseed, Soybean	242.83	264.86	275.31	288.54	301.45	300.10
Oilseed, Sunflowerseed	36.99	35.55	36.65	43.03	42.24	42.16
<b>Total</b>	<b>419.85</b>	<b>440.49</b>	<b>446.36</b>	<b>470.76</b>	<b>488.49</b>	<b>487.47</b>
<b>Ending Stocks</b>						
Oilseed, Copra	0.12	0.10	0.08	0.09	0.09	0.09
Oilseed, Cottonseed	1.78	1.68	0.90	1.33	1.60	1.60
Oilseed, Palm Kernel	0.29	0.26	0.24	0.24	0.24	0.24
Oilseed, Peanut	3.71	3.28	2.59	2.26	2.53	2.56
Oilseed, Rapeseed	7.50	7.54	6.61	5.39	6.07	5.71
Oilseed, Soybean	62.41	77.73	77.92	96.14	98.57	98.14
Oilseed, Sunflowerseed	3.01	2.76	2.27	2.58	2.09	2.09
<b>Total</b>	<b>78.81</b>	<b>93.37</b>	<b>90.61</b>	<b>108.01</b>	<b>111.18</b>	<b>110.43</b>

Totals may not add due to rounding



**Table 02: Major Protein Meals: World Supply and Distribution (Commodity View)**

Million Metric Tons

	2013/14	2014/15	2015/16	2016/17	Jan 2017/18	Feb 2017/18
<b>Production</b>						
Meal, Copra	1.80	1.80	1.77	1.78	1.83	1.83
Meal, Cottonseed	15.71	15.55	13.08	13.46	15.37	15.42
Meal, Fish	4.45	4.69	4.51	5.06	4.60	4.60
Meal, Palm Kernel	8.29	8.60	8.31	8.92	9.60	9.63
Meal, Peanut	7.06	6.66	6.67	7.25	7.29	7.28
Meal, Rapeseed	38.78	39.09	39.45	40.04	40.05	40.26
Meal, Soybean	190.43	208.56	216.10	226.45	236.73	235.61
Meal, Sunflowerseed	16.85	16.13	16.50	19.26	19.08	19.04
<b>Total</b>	<b>283.36</b>	<b>301.08</b>	<b>306.39</b>	<b>322.21</b>	<b>334.55</b>	<b>333.67</b>
<b>Imports</b>						
Meal, Copra	0.70	0.67	0.56	0.47	0.46	0.46
Meal, Cottonseed	0.36	0.26	0.21	0.25	0.25	0.23
Meal, Fish	2.74	2.50	2.47	3.00	2.48	2.49
Meal, Palm Kernel	6.51	6.82	6.45	7.48	7.36	7.32
Meal, Peanut	0.10	0.03	0.02	0.13	0.11	0.11
Meal, Rapeseed	6.50	5.99	5.71	5.90	6.09	5.88
Meal, Soybean	57.94	60.66	61.86	59.80	63.47	63.42
Meal, Sunflowerseed	5.76	5.52	5.95	7.02	6.96	6.99
<b>Total</b>	<b>80.60</b>	<b>82.45</b>	<b>83.23</b>	<b>84.06</b>	<b>87.18</b>	<b>86.90</b>
<b>Exports</b>						
Meal, Copra	0.72	0.73	0.58	0.50	0.65	0.65
Meal, Cottonseed	0.38	0.32	0.25	0.34	0.33	0.33
Meal, Fish	2.47	2.28	2.22	2.60	2.23	2.23
Meal, Palm Kernel	6.38	6.46	6.38	6.72	7.31	7.31
Meal, Peanut	0.13	0.05	0.05	0.16	0.17	0.17
Meal, Rapeseed	6.35	6.07	5.69	6.02	6.13	6.13
Meal, Soybean	60.64	64.40	65.42	64.68	67.18	67.08
Meal, Sunflowerseed	6.22	5.87	6.30	7.35	7.17	7.17
<b>Total</b>	<b>83.30</b>	<b>86.18</b>	<b>86.89</b>	<b>88.35</b>	<b>91.16</b>	<b>91.06</b>
<b>Domestic Consumption</b>						
Meal, Copra	1.78	1.71	1.71	1.70	1.65	1.65
Meal, Cottonseed	15.68	15.49	13.19	13.35	15.28	15.31
Meal, Fish	4.94	4.87	4.76	5.45	4.86	4.86
Meal, Palm Kernel	8.18	8.93	8.45	9.68	9.65	9.67
Meal, Peanut	7.02	6.64	6.61	7.25	7.23	7.23
Meal, Rapeseed	38.94	39.09	39.39	40.00	40.02	40.08
Meal, Soybean	186.73	201.93	213.38	221.99	233.12	233.07
Meal, Sunflowerseed	15.91	15.61	16.28	18.90	19.34	19.34
<b>Total</b>	<b>279.18</b>	<b>294.26</b>	<b>303.76</b>	<b>318.30</b>	<b>331.15</b>	<b>331.20</b>
<b>Ending Stocks</b>						
Meal, Copra	0.11	0.14	0.18	0.24	0.23	0.23
Meal, Cottonseed	0.22	0.22	0.07	0.09	0.09	0.09
Meal, Fish	0.23	0.26	0.27	0.28	0.27	0.28
Meal, Palm Kernel	0.61	0.65	0.59	0.59	0.55	0.56
Meal, Peanut	0.03	0.02	0.05	0.03	0.03	0.03
Meal, Rapeseed	0.97	0.89	0.98	0.90	0.88	0.84
Meal, Soybean	10.73	13.62	12.77	12.35	12.28	11.24
Meal, Sunflowerseed	1.31	1.49	1.36	1.40	0.92	0.93
<b>Total</b>	<b>14.21</b>	<b>17.29</b>	<b>16.26</b>	<b>15.88</b>	<b>15.26</b>	<b>14.19</b>

Totals may not add due to rounding

**Table 03: Major Vegetable Oils: World Supply and Distribution (Commodity View)**

Million Metric Tons

	2013/14	2014/15	2015/16	2016/17	Jan 2017/18	Feb 2017/18
<b>Production</b>						
Oil, Coconut	3.38	3.37	3.32	3.35	3.44	3.44
Oil, Cottonseed	5.16	5.12	4.29	4.42	5.03	5.06
Oil, Olive	3.20	2.40	3.12	2.49	2.70	2.70
Oil, Palm	59.36	61.87	58.90	64.87	69.42	69.77
Oil, Palm Kernel	7.07	7.31	7.01	7.59	8.09	8.12
Oil, Peanut	5.72	5.43	5.44	5.90	5.93	5.92
Oil, Rapeseed	27.28	27.62	27.86	28.32	28.35	28.46
Oil, Soybean	45.23	49.31	51.59	53.95	56.15	55.93
Oil, Sunflowerseed	15.45	14.92	15.38	18.17	17.75	17.72
<b>Total</b>	<b>171.85</b>	<b>177.35</b>	<b>176.91</b>	<b>189.06</b>	<b>196.85</b>	<b>197.12</b>
<b>Imports</b>						
Oil, Coconut	1.74	1.82	1.58	1.45	1.50	1.42
Oil, Cottonseed	0.08	0.07	0.05	0.05	0.05	0.05
Oil, Olive	0.73	0.89	0.77	0.77	0.81	0.81
Oil, Palm	41.94	44.84	42.55	45.17	46.58	47.08
Oil, Palm Kernel	2.50	3.06	2.63	2.66	2.63	2.73
Oil, Peanut	0.19	0.25	0.24	0.22	0.24	0.24
Oil, Rapeseed	3.82	3.95	4.14	4.36	4.51	4.47
Oil, Soybean	9.25	10.03	11.63	10.94	11.20	11.06
Oil, Sunflowerseed	6.97	6.18	7.00	9.00	8.24	8.28
<b>Total</b>	<b>67.23</b>	<b>71.09</b>	<b>70.59</b>	<b>74.62</b>	<b>75.76</b>	<b>76.15</b>
<b>Exports</b>						
Oil, Coconut	1.91	1.94	1.56	1.67	1.70	1.70
Oil, Cottonseed	0.14	0.14	0.06	0.07	0.11	0.09
Oil, Olive	0.84	0.99	0.90	0.88	0.94	0.94
Oil, Palm	43.19	47.37	43.73	48.63	49.88	50.04
Oil, Palm Kernel	2.88	3.23	3.02	3.04	3.16	3.18
Oil, Peanut	0.22	0.26	0.26	0.23	0.26	0.26
Oil, Rapeseed	3.83	4.06	4.17	4.52	4.51	4.55
Oil, Soybean	9.42	11.10	11.77	11.31	11.37	11.25
Oil, Sunflowerseed	7.78	7.38	8.11	10.41	9.10	9.10
<b>Total</b>	<b>70.22</b>	<b>76.48</b>	<b>73.56</b>	<b>80.76</b>	<b>81.02</b>	<b>81.11</b>
<b>Domestic Consumption</b>						
Oil, Coconut	3.34	3.29	3.26	3.22	3.22	3.14
Oil, Cottonseed	5.09	5.06	4.40	4.40	4.93	4.97
Oil, Olive	2.97	2.64	2.81	2.58	2.58	2.58
Oil, Palm	57.57	58.74	59.18	61.46	63.94	64.52
Oil, Palm Kernel	6.58	7.22	6.81	7.12	7.35	7.47
Oil, Peanut	5.68	5.50	5.44	5.80	5.98	5.97
Oil, Rapeseed	26.17	27.28	28.32	29.21	29.14	29.09
Oil, Soybean	45.24	47.83	52.21	53.85	56.10	55.97
Oil, Sunflowerseed	14.15	14.11	15.17	16.69	17.11	17.13
<b>Total</b>	<b>166.77</b>	<b>171.67</b>	<b>177.60</b>	<b>184.33</b>	<b>190.34</b>	<b>190.83</b>
<b>Ending Stocks</b>						
Oil, Coconut	0.33	0.29	0.37	0.29	0.31	0.31
Oil, Cottonseed	0.23	0.22	0.10	0.11	0.15	0.15
Oil, Olive	0.65	0.30	0.49	0.28	0.28	0.28
Oil, Palm	9.55	10.15	8.69	8.65	10.86	10.94
Oil, Palm Kernel	0.93	0.85	0.67	0.76	0.96	0.97
Oil, Peanut	0.24	0.15	0.13	0.22	0.16	0.16
Oil, Rapeseed	5.54	5.76	5.27	4.22	3.35	3.51
Oil, Soybean	3.91	4.32	3.57	3.29	3.13	3.07
Oil, Sunflowerseed	2.81	2.41	1.51	1.59	1.34	1.35
<b>Total</b>	<b>24.18</b>	<b>24.47</b>	<b>20.81</b>	<b>19.40</b>	<b>20.55</b>	<b>20.72</b>

Totals may not add due to rounding

**Table 04: Major Oilseeds: World Supply and Distribution (Country View)**

Million Metric Tons

	2013/14	2014/15	2015/16	2016/17	Jan 2017/18	Feb 2017/18
<b>Production</b>						
United States	99.02	116.03	115.88	126.94	131.31	131.31
Brazil	90.01	100.16	99.01	117.04	113.25	115.32
Argentina	57.03	66.26	60.80	62.82	61.15	59.15
China	58.64	57.66	54.45	56.34	57.95	58.45
India	36.86	32.28	29.37	37.76	36.53	35.65
Other	162.66	165.19	161.98	174.08	179.89	178.75
<b>Total</b>	<b>504.22</b>	<b>537.58</b>	<b>521.50</b>	<b>574.97</b>	<b>580.08</b>	<b>578.62</b>
<b>Imports</b>						
China	75.58	83.15	87.93	98.42	102.40	102.40
European Union	18.01	17.35	20.13	19.20	19.64	19.64
Mexico	5.58	5.73	5.82	6.03	6.61	6.61
Japan	5.49	5.70	5.78	5.79	6.01	6.01
Thailand	1.89	2.51	2.91	3.18	3.25	3.25
Pakistan	1.15	1.67	2.62	2.78	3.22	3.22
Indonesia	2.55	2.25	2.52	2.95	2.91	2.91
Turkey	2.40	3.12	2.98	3.01	2.82	2.82
Egypt	1.76	2.01	1.37	2.18	2.67	2.67
Taiwan	2.35	2.53	2.48	2.58	2.41	2.41
Other	16.82	17.58	19.24	20.05	20.80	20.90
<b>Total</b>	<b>133.57</b>	<b>143.60</b>	<b>153.79</b>	<b>166.16</b>	<b>172.73</b>	<b>172.83</b>
<b>Exports</b>						
Brazil	46.99	50.85	54.65	63.33	67.25	69.25
United States	45.57	51.12	53.96	60.28	60.04	58.41
Canada	12.69	13.01	14.55	15.75	17.03	17.03
Argentina	8.59	11.56	11.21	7.92	9.47	9.45
Paraguay	4.86	4.62	5.41	6.13	6.01	5.81
Ukraine	3.57	4.43	3.89	4.13	4.60	4.50
Australia	3.07	2.92	2.23	3.46	2.61	2.61
Other	8.42	8.64	7.39	9.38	8.97	8.79
<b>Total</b>	<b>133.77</b>	<b>147.15</b>	<b>153.28</b>	<b>170.38</b>	<b>175.97</b>	<b>175.85</b>
<b>Crush</b>						
China	107.63	112.09	117.80	124.37	131.95	132.75
United States	51.46	55.11	55.06	56.20	57.96	57.58
European Union	44.97	47.84	46.74	46.98	48.12	48.12
Argentina	38.79	43.39	46.37	46.86	48.72	47.56
Brazil	39.71	42.94	41.84	43.38	44.74	44.79
India	28.91	25.15	22.90	27.78	28.37	27.91
Russia	13.15	12.98	13.59	15.65	15.95	15.95
Ukraine	12.16	11.45	12.93	15.60	14.10	14.10
Indonesia	9.64	10.25	10.02	10.98	11.71	11.71
Canada	8.50	9.15	10.32	11.14	11.15	11.15
Mexico	6.08	6.41	6.49	6.72	7.34	7.34
Pakistan	5.11	5.96	5.58	5.88	6.50	6.50
Malaysia	5.53	5.55	5.20	5.38	5.89	5.89
Japan	4.40	4.66	4.73	4.86	4.83	4.83
Turkey	3.41	4.28	3.65	3.99	4.39	4.39
Other	40.40	43.29	43.15	45.00	46.78	46.92
<b>Total</b>	<b>419.85</b>	<b>440.49</b>	<b>446.36</b>	<b>470.76</b>	<b>488.49</b>	<b>487.47</b>
<b>Ending Stocks</b>						
Argentina	26.61	33.37	32.51	37.32	37.24	36.07
Brazil	16.00	19.07	18.32	25.01	22.53	22.58
China	14.98	18.60	18.32	21.89	22.05	21.83
United States	3.95	6.76	6.87	9.60	14.57	16.24
European Union	4.22	3.86	4.21	2.80	3.10	3.11
Other	13.04	11.70	10.39	11.39	11.69	10.61
<b>Total</b>	<b>78.81</b>	<b>93.37</b>	<b>90.61</b>	<b>108.01</b>	<b>111.18</b>	<b>110.43</b>

Major Oilseeds includes Copra, Cottonseed, Palm Kernel, Peanut, Rapeseed, Soybeans and Sunflowerseeds.

**Table 05: Major Protein Meals: World Supply and Distribution (Country View)**

Million Metric Tons

	2013/14	2014/15	2015/16	2016/17	Jan 2017/18	Feb 2017/18
<b>Production</b>						
China	74.75	78.57	83.55	88.69	94.35	94.74
United States	39.29	43.21	42.78	43.06	44.47	44.33
Argentina	29.10	32.29	34.51	34.77	36.07	35.12
Brazil	29.88	32.48	31.74	32.83	33.79	33.82
European Union	28.72	30.63	30.16	30.18	30.83	30.83
Other	81.63	83.90	83.65	92.68	95.03	94.82
<b>Total</b>	<b>283.36</b>	<b>301.08</b>	<b>306.39</b>	<b>322.21</b>	<b>334.55</b>	<b>333.67</b>
<b>Imports</b>						
European Union	24.62	25.82	25.40	25.01	25.51	25.51
Vietnam	3.94	4.97	5.71	5.22	5.77	5.77
Indonesia	4.21	3.98	4.30	4.35	4.54	4.54
United States	3.80	3.87	4.08	3.92	3.89	3.71
Thailand	3.14	3.65	2.98	3.32	3.34	3.35
Korea, South	3.68	3.42	3.39	3.03	3.37	3.33
Japan	2.52	2.31	2.60	2.93	3.13	3.13
Other	34.69	34.41	34.77	36.29	37.64	37.57
<b>Total</b>	<b>80.60</b>	<b>82.45</b>	<b>83.23</b>	<b>84.06</b>	<b>87.18</b>	<b>86.90</b>
<b>Exports</b>						
Argentina	25.38	29.19	31.17	32.09	32.08	32.08
Brazil	13.95	14.29	15.41	13.76	15.25	15.25
United States	10.80	12.14	11.18	10.83	11.41	11.41
Canada	3.67	3.86	4.44	4.98	5.11	5.11
Ukraine	3.81	3.74	4.35	5.19	5.05	5.05
Indonesia	3.93	4.28	4.12	4.51	4.90	4.90
Malaysia	2.55	2.43	2.47	2.36	2.62	2.62
Other	19.20	16.25	13.75	14.64	14.75	14.65
<b>Total</b>	<b>83.30</b>	<b>86.18</b>	<b>86.89</b>	<b>88.35</b>	<b>91.16</b>	<b>91.06</b>
<b>Domestic Consumption</b>						
China	74.78	78.73	83.33	90.71	95.34	95.73
European Union	51.97	54.44	54.50	54.58	55.06	55.06
United States	32.31	34.94	35.69	36.02	37.03	36.71
Brazil	16.43	16.88	17.26	18.01	18.77	18.80
India	12.19	12.17	13.05	14.08	15.14	15.12
Mexico	5.83	6.37	7.03	7.03	7.59	7.57
Vietnam	5.24	5.85	6.47	6.71	7.17	7.18
Russia	4.92	5.42	5.92	6.56	7.07	7.07
Japan	5.45	5.54	5.86	6.28	6.46	6.46
Thailand	5.26	5.32	5.37	5.43	5.50	5.51
Other	64.81	68.61	69.29	72.88	76.02	75.99
<b>Total</b>	<b>279.18</b>	<b>294.26</b>	<b>303.76</b>	<b>318.30</b>	<b>331.15</b>	<b>331.20</b>
<b>SME</b>						
China	69.74	73.80	78.55	85.96	90.38	90.69
European Union	44.21	46.54	46.77	46.65	47.08	47.08
United States	30.92	33.56	34.28	34.60	35.58	35.33
Brazil	16.16	16.64	17.06	17.78	18.52	18.54
India	10.57	10.62	11.17	12.07	12.90	12.87
Mexico	5.44	5.97	6.63	6.63	7.13	7.11
Vietnam	5.05	5.63	6.23	6.46	6.89	6.90
Other	71.68	75.61	77.33	80.63	84.25	84.17
<b>Total</b>	<b>253.76</b>	<b>268.36</b>	<b>278.03</b>	<b>290.79</b>	<b>302.72</b>	<b>302.70</b>
<b>Ending Stocks</b>						
Brazil	2.49	3.82	2.92	4.01	3.81	3.81
Argentina	4.27	4.26	4.26	3.39	3.56	2.61
European Union	0.74	1.46	1.33	0.60	0.75	0.78
Indonesia	0.70	0.50	0.55	0.54	0.64	0.64
India	0.71	0.70	0.36	0.89	0.74	0.60
Other	5.30	6.55	6.84	6.46	5.76	5.75
<b>Total</b>	<b>14.21</b>	<b>17.29</b>	<b>16.26</b>	<b>15.88</b>	<b>15.26</b>	<b>14.19</b>

Major Protein Meals include Copra, Cottonseed, Fish, Palm Kernel, Peanut, Rapeseed, Soybean, and Sunflower Meal.

**Table 06: Major Vegetable Oils: World Supply and Distribution (Country View)**

Million Metric Tons

	2013/14	2014/15	2015/16	2016/17	Jan 2017/18	Feb 2017/18
<b>Production</b>						
Indonesia	35.02	37.78	36.68	41.10	43.91	43.91
China	24.31	25.04	26.27	27.40	28.61	28.77
Malaysia	22.59	22.27	19.85	21.12	22.93	22.93
European Union	18.24	18.08	18.41	18.07	18.57	18.57
United States	10.43	10.94	11.21	11.42	11.67	11.60
Argentina	7.84	8.98	9.69	9.87	10.22	10.03
Brazil	8.00	8.65	8.45	8.73	8.97	9.00
Other	45.43	45.62	46.35	51.34	51.97	52.31
<b>Total</b>	<b>171.85</b>	<b>177.35</b>	<b>176.91</b>	<b>189.06</b>	<b>196.85</b>	<b>197.12</b>
<b>Imports</b>						
India	11.50	14.14	15.11	15.43	16.37	16.64
European Union	9.98	9.88	9.96	10.29	9.75	9.75
China	9.10	8.63	7.77	8.00	7.71	7.76
United States	4.02	4.23	4.53	4.73	4.92	4.86
Pakistan	2.84	2.98	2.91	3.28	3.28	3.28
Bangladesh	1.68	1.79	2.15	2.15	2.35	2.35
Egypt	2.08	2.25	2.04	2.16	2.15	2.15
Turkey	1.46	1.53	1.41	1.50	1.45	1.45
Malaysia	0.85	1.68	1.34	1.12	1.26	1.26
Iran	1.60	1.14	0.99	1.32	1.22	1.22
Other	22.11	22.85	22.37	24.64	25.30	25.43
<b>Total</b>	<b>67.23</b>	<b>71.09</b>	<b>70.59</b>	<b>74.62</b>	<b>75.76</b>	<b>76.15</b>
<b>Exports</b>						
Indonesia	23.94	28.51	25.19	29.86	30.42	30.42
Malaysia	18.75	18.84	17.84	17.48	18.53	18.52
Argentina	4.55	5.72	6.41	6.29	6.47	6.37
Ukraine	4.36	4.12	4.81	6.10	5.23	5.23
Canada	2.45	2.54	2.93	3.31	3.34	3.34
Russia	2.46	2.23	2.23	2.98	2.82	2.82
European Union	2.31	2.48	2.48	2.44	2.29	2.29
Other	11.41	12.04	11.66	12.30	11.94	12.14
<b>Total</b>	<b>70.22</b>	<b>76.48</b>	<b>73.56</b>	<b>80.76</b>	<b>81.02</b>	<b>81.11</b>
<b>Domestic Consumption</b>						
China	32.77	33.61	34.83	36.04	36.79	36.91
European Union	25.20	25.88	26.11	26.03	26.03	26.03
India	18.66	20.05	21.05	22.49	23.42	23.51
United States	13.50	13.68	14.57	14.71	15.60	15.48
Indonesia	11.05	9.90	11.35	11.87	12.25	12.25
Brazil	7.00	7.52	7.48	7.87	8.02	8.08
Malaysia	4.36	4.56	4.53	4.29	4.73	4.74
Pakistan	3.77	4.15	4.26	4.50	4.64	4.64
Argentina	3.53	3.11	3.54	3.68	3.76	3.76
Russia	3.16	3.24	3.37	3.47	3.58	3.58
Thailand	2.32	2.49	2.44	2.69	3.12	3.12
Mexico	2.41	2.61	2.64	2.80	2.95	2.96
Bangladesh	1.90	2.08	2.37	2.50	2.80	2.80
Egypt	2.38	2.48	2.46	2.51	2.58	2.60
Japan	2.33	2.36	2.36	2.42	2.48	2.48
Other	32.43	33.98	34.24	36.47	37.60	37.91
<b>Total</b>	<b>166.77</b>	<b>171.67</b>	<b>177.60</b>	<b>184.33</b>	<b>190.34</b>	<b>190.83</b>
<b>Ending Stocks</b>						
Indonesia	3.61	3.02	3.20	2.60	3.88	3.88
Malaysia	2.45	3.00	1.83	2.30	3.21	3.24
China	5.33	5.25	4.35	3.56	2.88	3.05
India	1.70	1.81	1.62	1.49	1.37	1.46
European Union	2.11	1.71	1.49	1.39	1.40	1.39
Other	8.98	9.68	8.33	8.06	7.81	7.71
<b>Total</b>	<b>24.18</b>	<b>24.47</b>	<b>20.81</b>	<b>19.40</b>	<b>20.55</b>	<b>20.72</b>

Major Vegetable Oils includes Coconut, Cottonseed, Olive, Palm, Palm Kernel, Peanut, Rapeseed, Soybean, and Sunflowerseed oil.

**Table 07: Soybeans: World Supply and Distribution**

Thousand Metric Tons

	2013/14	2014/15	2015/16	2016/17	Jan 2017/18	Feb 2017/18
<b>Production</b>						
United States	91,389	106,878	106,857	116,920	119,518	119,518
Brazil	86,700	97,200	96,500	114,100	110,000	112,000
Argentina	53,400	61,400	56,800	57,800	56,000	54,000
China	11,951	12,154	11,785	12,900	14,200	14,200
India	9,477	8,711	6,929	11,500	10,000	9,500
Paraguay	8,190	8,154	9,217	10,665	9,400	9,200
Canada	5,359	6,049	6,459	6,552	8,000	8,000
Other	16,283	19,471	19,220	20,886	21,451	20,501
<b>Total</b>	<b>282,749</b>	<b>320,017</b>	<b>313,767</b>	<b>351,323</b>	<b>348,569</b>	<b>346,919</b>
<b>Imports</b>						
China	70,364	78,350	83,230	93,495	97,000	97,000
European Union	13,293	13,914	15,120	13,379	14,000	14,000
Mexico	3,842	3,819	4,126	4,126	4,300	4,300
Japan	2,894	3,004	3,186	3,175	3,300	3,300
Thailand	1,798	2,411	2,798	3,077	3,150	3,150
Egypt	1,694	1,947	1,300	2,115	2,600	2,600
Indonesia	2,241	2,006	2,274	2,649	2,600	2,600
Taiwan	2,335	2,520	2,476	2,566	2,400	2,400
Turkey	1,608	2,197	2,283	2,271	2,250	2,250
Iran	301	1,311	1,864	1,879	2,100	2,100
Other	12,697	12,883	14,673	15,516	16,465	16,535
<b>Total</b>	<b>113,067</b>	<b>124,362</b>	<b>133,330</b>	<b>144,248</b>	<b>150,165</b>	<b>150,235</b>
<b>Exports</b>						
Brazil	46,829	50,612	54,383	63,137	67,000	69,000
United States	44,594	50,143	52,860	59,157	58,786	57,153
Argentina	7,842	10,575	9,922	7,026	8,500	8,500
Paraguay	4,844	4,576	5,400	6,129	6,000	5,800
Canada	3,469	3,763	4,236	4,591	5,500	5,500
Other	5,144	6,548	5,753	7,177	6,399	5,999
<b>Total</b>	<b>112,722</b>	<b>126,217</b>	<b>132,554</b>	<b>147,217</b>	<b>152,185</b>	<b>151,952</b>
<b>Crush</b>						
China	68,850	74,500	81,500	88,000	95,000	95,000
United States	47,192	50,975	51,335	51,681	53,070	53,070
Argentina	36,173	40,235	43,267	43,303	44,840	43,680
Brazil	36,861	40,435	39,747	40,900	42,000	42,000
European Union	13,100	14,450	14,950	14,400	14,500	14,500
India	8,700	7,700	5,700	9,200	9,000	8,770
Russia	3,400	3,650	4,050	4,500	4,750	4,750
Mexico	4,030	4,175	4,400	4,600	4,720	4,720
Paraguay	3,550	3,700	3,800	3,850	3,700	3,700
Bolivia	2,250	2,500	2,350	2,050	2,500	2,500
Egypt	1,680	1,950	1,150	2,200	2,500	2,500
Japan	1,969	2,150	2,283	2,392	2,350	2,350
Iran	450	1,450	2,100	2,060	2,300	2,300
Canada	1,525	1,787	2,000	2,000	2,000	2,000
Pakistan	11	500	1,250	1,680	2,000	2,000
Other	13,092	14,703	15,426	15,727	16,217	16,257
<b>Total</b>	<b>242,833</b>	<b>264,860</b>	<b>275,308</b>	<b>288,543</b>	<b>301,447</b>	<b>300,097</b>
<b>Ending Stocks</b>						
Argentina	25,271	31,700	31,600	36,220	36,170	35,000
Brazil	15,820	18,925	18,200	24,863	22,363	22,413
China	13,848	17,009	16,910	20,391	20,641	20,641
United States	2,504	5,188	5,354	8,208	12,788	14,421
European Union	1,253	843	1,559	1,057	1,207	1,207
Other	3,714	4,069	4,301	5,396	5,397	4,453
<b>Total</b>	<b>62,410</b>	<b>77,734</b>	<b>77,924</b>	<b>96,135</b>	<b>98,566</b>	<b>98,135</b>

Most countries are on an October/September Marketing Year (MY). The United States, Mexico, and Thailand are on a September/August MY. Canada is on an August/July MY. Paraguay is on a Jan/Dec MY.

**Table 08: Soybean Meal: World Supply and Distribution**

Thousand Metric Tons

	2013/14	2014/15	2015/16	2016/17	Jan 2017/18	Feb 2017/18
<b>Production</b>						
China	54,531	59,004	64,548	69,696	75,240	75,240
United States	36,909	40,880	40,525	40,581	41,821	41,821
Argentina	27,892	30,928	33,211	33,275	34,420	33,470
Brazil	28,540	31,300	30,750	31,660	32,500	32,500
European Union	10,349	11,416	11,811	11,376	11,455	11,455
India	6,960	6,160	4,560	7,360	7,200	7,015
Russia	2,679	2,876	3,191	3,546	3,743	3,743
Other	22,571	25,997	27,499	28,954	30,354	30,369
<b>Total</b>	<b>190,431</b>	<b>208,561</b>	<b>216,095</b>	<b>226,448</b>	<b>236,733</b>	<b>235,613</b>
<b>Imports</b>						
European Union	18,137	19,623	19,207	18,862	19,200	19,200
Vietnam	3,344	4,311	5,094	4,600	5,100	5,100
Indonesia	3,983	3,844	4,203	4,254	4,450	4,450
Thailand	2,665	3,068	2,433	2,781	2,800	2,800
Philippines	2,335	2,204	2,617	2,450	2,750	2,750
Mexico	1,410	1,795	2,367	1,991	2,350	2,350
Korea, South	1,825	1,751	2,118	1,764	2,000	2,000
Japan	1,976	1,699	1,721	1,621	1,750	1,750
Iran	2,683	1,948	1,420	1,507	1,650	1,650
Malaysia	1,397	1,465	1,291	1,427	1,530	1,480
Other	18,189	18,956	19,388	18,546	19,887	19,889
<b>Total</b>	<b>57,944</b>	<b>60,664</b>	<b>61,859</b>	<b>59,803</b>	<b>63,467</b>	<b>63,419</b>
<b>Exports</b>						
Argentina	24,972	28,575	30,333	31,323	31,200	31,200
Brazil	13,948	14,290	15,407	13,762	15,250	15,250
United States	10,504	11,891	10,844	10,524	11,068	11,068
Paraguay	2,428	2,569	2,552	2,407	2,500	2,500
India	3,252	1,521	409	2,000	1,800	1,700
Other	5,536	5,556	5,877	4,660	5,362	5,362
<b>Total</b>	<b>60,640</b>	<b>64,402</b>	<b>65,422</b>	<b>64,676</b>	<b>67,180</b>	<b>67,080</b>
<b>Domestic Consumption</b>						
China	52,534	57,467	62,663	68,646	73,870	73,870
United States	26,775	29,282	30,044	30,250	31,116	31,116
European Union	28,142	30,242	30,842	30,242	30,342	30,342
Brazil	15,100	15,700	16,270	16,843	17,480	17,480
Vietnam	4,200	4,750	5,470	5,690	6,110	6,110
Mexico	4,575	5,050	5,750	5,740	6,050	6,050
India	3,640	4,500	4,630	5,007	5,450	5,450
Indonesia	3,825	4,100	4,178	4,254	4,350	4,350
Thailand	4,150	4,100	4,230	4,231	4,300	4,300
Russia	2,700	2,850	3,150	3,200	3,600	3,600
Japan	3,434	3,361	3,453	3,423	3,520	3,520
Iran	2,800	3,000	3,180	3,300	3,450	3,450
Egypt	2,400	2,650	2,950	2,980	3,100	3,100
Argentina	2,100	2,402	2,672	2,853	3,055	3,055
Philippines	2,200	2,350	2,550	2,700	2,850	2,850
Other	28,158	30,127	31,351	32,628	34,475	34,422
<b>Total</b>	<b>186,733</b>	<b>201,931</b>	<b>213,383</b>	<b>221,987</b>	<b>233,118</b>	<b>233,065</b>
<b>Ending Stocks</b>						
Brazil	2,484	3,812	2,910	4,000	3,800	3,800
Argentina	4,073	4,025	4,231	3,330	3,495	2,545
India	407	553	119	483	440	355
Indonesia	481	225	250	250	350	350
Philippines	251	180	414	289	277	314
Other	3,029	4,822	4,842	4,002	3,922	3,877
<b>Total</b>	<b>10,725</b>	<b>13,617</b>	<b>12,766</b>	<b>12,354</b>	<b>12,284</b>	<b>11,241</b>

Most countries are on an October/September Marketing Year (MY). The Mexico and Thailand are on a September/August MY. Canada is on an August/July MY. Paraguay, Vietnam and the Philippines are on a January/December MY and Bolivia is on a March/February MY.

**Table 09: Soybean Oil: World Supply and Distribution**

Thousand Metric Tons

	2013/14	2014/15	2015/16	2016/17	Jan 2017/18	Feb 2017/18
<b>Production</b>						
China	12,335	13,347	14,605	15,770	17,024	17,024
United States	9,131	9,706	9,956	10,024	10,217	10,217
Argentina	6,785	7,687	8,433	8,395	8,630	8,440
Brazil	7,070	7,760	7,630	7,850	8,060	8,060
European Union	2,489	2,746	2,841	2,736	2,755	2,755
India	1,566	1,386	1,025	1,655	1,620	1,575
Russia	609	654	726	806	851	851
Other	5,245	6,022	6,376	6,714	6,990	7,011
<b>Total</b>	<b>45,230</b>	<b>49,308</b>	<b>51,592</b>	<b>53,950</b>	<b>56,147</b>	<b>55,933</b>
<b>Imports</b>						
India	1,804	2,815	4,269	3,534	3,800	3,645
Algeria	629	631	732	667	750	750
Bangladesh	442	508	639	834	750	750
China	1,353	773	586	711	500	500
Morocco	444	432	465	497	500	500
Peru	355	395	382	400	420	420
Colombia	288	304	372	375	385	385
Egypt	230	480	674	246	350	350
Iran	551	421	299	257	315	315
Korea, South	278	257	250	306	285	310
Other	2,879	3,016	2,964	3,110	3,141	3,136
<b>Total</b>	<b>9,253</b>	<b>10,032</b>	<b>11,632</b>	<b>10,937</b>	<b>11,196</b>	<b>11,061</b>
<b>Exports</b>						
Argentina	4,087	5,094	5,698	5,387	5,600	5,500
Brazil	1,378	1,510	1,550	1,241	1,450	1,450
United States	852	914	1,017	1,160	862	862
European Union	766	1,010	915	842	820	820
Paraguay	630	699	709	686	670	670
Russia	332	423	431	529	500	500
Bolivia	371	392	444	275	380	380
Other	1,007	1,059	1,002	1,192	1,084	1,071
<b>Total</b>	<b>9,423</b>	<b>11,101</b>	<b>11,766</b>	<b>11,312</b>	<b>11,366</b>	<b>11,253</b>
<b>Domestic Consumption</b>						
China	13,650	14,200	15,350	16,350	17,400	17,400
United States	8,576	8,600	9,145	8,998	9,570	9,570
Brazil	5,705	6,265	6,290	6,590	6,700	6,720
India	3,300	4,100	5,300	5,400	5,400	5,200
Argentina	2,844	2,401	2,830	2,970	3,045	3,045
European Union	1,990	2,040	2,285	2,205	2,155	2,155
Mexico	890	1,001	1,020	1,130	1,150	1,150
Bangladesh	551	668	785	1,005	1,000	1,000
Egypt	442	752	950	630	760	760
Algeria	590	640	700	700	740	740
Iran	600	660	720	710	725	725
Pakistan	107	242	415	475	520	520
Morocco	420	450	475	475	500	500
Colombia	340	380	440	460	480	480
Korea, South	440	435	440	460	455	480
Other	4,794	4,992	5,063	5,296	5,497	5,520
<b>Total</b>	<b>45,239</b>	<b>47,826</b>	<b>52,208</b>	<b>53,854</b>	<b>56,097</b>	<b>55,965</b>
<b>Ending Stocks</b>						
United States	529	841	765	776	697	697
China	965	778	523	536	560	560
India	420	521	512	300	320	320
Brazil	386	382	237	316	286	266
Argentina	151	365	270	308	293	203
Other	1,459	1,436	1,266	1,058	972	1,024
<b>Total</b>	<b>3,910</b>	<b>4,323</b>	<b>3,573</b>	<b>3,294</b>	<b>3,128</b>	<b>3,070</b>

Most countries are on an October/September Marketing Year (MY). Mexico is on a September/August MY. Paraguay and Peru are on an January/December MY and Bolivia is on a March/February MY.



**Table 10: Soybeans and Products: World Trade**  
**Thousand Metric Tons**

Marketing Year	Meal, Soybean			Oil, Soybean			Oilseed, Soybean			
	2015/16	2016/17	2017/18	2015/16	2016/17	2017/18	2015/16	2016/17	2017/18	
<b>Exports</b>										
North America		11,192	10,829	11,382	1,171	1,359	1,026	57,096	63,748	62,653
Canada	(Aug-Jul)	334	292	300	151	175	160	4,236	4,591	5,500
United States	(Sep-Aug)	10,844	10,524	11,068	1,017	1,160	862	52,860	59,157	57,153
South America		49,963	48,913	50,661	8,402	7,592	8,004	71,974	79,215	85,805
Argentina	(Oct-Sep)	30,333	31,323	31,200	5,698	5,387	5,500	9,922	7,026	8,500
Brazil	(Oct-Sep)	15,407	13,762	15,250	1,550	1,241	1,450	54,383	63,137	69,000
Paraguay	(Jan-Dec)	2,552	2,407	2,500	709	686	670	5,400	6,129	5,800
South Asia		417	2,008	1,706	3	1	0	134	269	180
India	(Oct-Sep)	409	2,000	1,700	3	1	0	134	269	180
Other		3,850	2,926	3,331	2,190	2,360	2,223	3,350	3,985	3,314
<b>World Total</b>		<b>65,422</b>	<b>64,676</b>	<b>67,080</b>	<b>11,766</b>	<b>11,312</b>	<b>11,253</b>	<b>132,554</b>	<b>147,217</b>	<b>151,952</b>
<b>Imports</b>										
European Union	(Oct-Sep)	19,207	18,862	19,200	325	285	250	15,120	13,379	14,000
East Asia		3,912	3,502	3,857	952	1,135	927	90,145	100,525	103,980
China	(Oct-Sep)	24	61	30	586	711	500	83,230	93,495	97,000
Japan	(Oct-Sep)	1,721	1,621	1,750	7	5	5	3,186	3,175	3,300
Korea, South	(Oct-Sep)	2,118	1,764	2,000	250	306	310	1,249	1,286	1,275
Taiwan	(Oct-Sep)	33	33	45	0	0	0	2,476	2,566	2,400
Southeast Asia		15,660	15,538	16,606	287	302	285	7,856	8,355	8,720
Indonesia	(Oct-Sep)	4,203	4,254	4,450	24	23	22	2,274	2,649	2,600
Malaysia	(Oct-Sep)	1,291	1,427	1,480	120	138	120	885	768	850
Philippines	(Jan-Dec)	2,617	2,450	2,750	43	45	45	275	191	200
Thailand	(Sep-Aug)	2,433	2,781	2,800	4	8	8	2,798	3,077	3,150
Vietnam	(Jan-Dec)	5,094	4,600	5,100	76	70	70	1,602	1,650	1,900
North America		3,522	3,129	3,522	431	423	461	5,053	5,217	5,460
Canada	(Aug-Jul)	789	821	900	19	23	25	286	486	480
Mexico	(Sep-Aug)	2,367	1,991	2,350	282	255	300	4,126	4,126	4,300
South America		4,843	4,977	5,302	1,223	1,333	1,377	2,163	3,019	3,087
Brazil	(Oct-Sep)	25	35	30	65	60	60	410	252	200
Colombia	(Oct-Sep)	1,206	1,315	1,375	372	375	385	544	550	600
Central America		1,161	1,185	1,255	151	158	163	335	345	374
Caribbean		952	1,042	1,077	296	319	338	118	147	158
Middle East		4,103	4,583	4,850	404	366	433	5,186	5,198	5,490
Iran	(Oct-Sep)	1,420	1,507	1,650	299	257	315	1,864	1,879	2,100
Israel	(Oct-Sep)	131	135	155	11	10	10	392	374	400
Syria	(Jan-Dec)	36	20	15	2	0	2	17	4	15
Turkey	(Oct-Sep)	603	790	700	0	0	0	2,283	2,271	2,250
North Africa		4,496	3,206	3,535	1,995	1,560	1,760	1,946	2,653	3,240
Egypt	(Oct-Sep)	2,174	1,053	1,200	674	246	350	1,300	2,115	2,600
Other		4,003	3,779	4,215	5,568	5,056	5,067	5,408	5,410	5,726
<b>World Total</b>		<b>61,859</b>	<b>59,803</b>	<b>63,419</b>	<b>11,632</b>	<b>10,937</b>	<b>11,061</b>	<b>133,330</b>	<b>144,248</b>	<b>150,235</b>

**Table 11: Palm Oil: World Supply and Distribution**

Thousand Metric Tons

	2013/14	2014/15	2015/16	2016/17	Jan 2017/18	Feb 2017/18
<b>Production</b>						
Indonesia	30,500	33,000	32,000	36,000	38,500	38,500
Malaysia	20,161	19,879	17,700	18,860	20,500	20,500
Thailand	2,000	2,068	1,804	2,500	2,700	2,700
Colombia	1,041	1,110	1,275	1,147	1,269	1,628
Nigeria	970	970	970	970	970	970
Other	4,690	4,845	5,153	5,397	5,476	5,476
<b>Total</b>	<b>59,362</b>	<b>61,872</b>	<b>58,902</b>	<b>64,874</b>	<b>69,415</b>	<b>69,774</b>
<b>Imports</b>						
India	7,820	9,139	8,860	9,341	10,200	10,600
European Union	6,969	6,935	6,636	6,700	6,500	6,500
China	5,573	5,696	4,689	4,881	4,800	4,800
Pakistan	2,725	2,826	2,720	3,075	3,100	3,100
Bangladesh	1,232	1,280	1,511	1,314	1,600	1,600
United States	1,220	1,143	1,307	1,367	1,445	1,445
Egypt	1,075	1,489	1,038	1,323	1,250	1,250
Philippines	681	792	941	1,150	950	1,100
Russia	646	854	933	848	850	850
Burma	581	789	788	780	800	800
Other	13,420	13,897	13,127	14,388	15,087	15,037
<b>Total</b>	<b>41,942</b>	<b>44,840</b>	<b>42,550</b>	<b>45,167</b>	<b>46,582</b>	<b>47,082</b>
<b>Exports</b>						
Indonesia	21,719	25,964	22,906	27,633	28,000	28,000
Malaysia	17,344	17,378	16,621	16,301	17,300	17,300
Guatemala	411	453	614	700	700	700
Colombia	248	316	420	502	470	650
Benin	600	500	460	520	580	580
Other	2,872	2,759	2,709	2,971	2,826	2,811
<b>Total</b>	<b>43,194</b>	<b>47,370</b>	<b>43,730</b>	<b>48,627</b>	<b>49,876</b>	<b>50,041</b>
<b>Domestic Consumption</b>						
India	8,302	9,150	9,100	9,650	10,300	10,600
Indonesia	8,750	7,520	8,870	9,070	9,350	9,350
European Union	6,600	6,920	6,700	6,500	6,350	6,350
China	5,700	5,700	4,800	4,820	4,800	4,800
Pakistan	2,540	2,738	2,815	3,070	3,085	3,085
Malaysia	2,869	2,941	2,990	2,687	3,070	3,067
Thailand	1,790	1,925	1,835	2,085	2,460	2,460
Bangladesh	1,215	1,275	1,411	1,314	1,620	1,620
United States	1,207	1,092	1,269	1,355	1,434	1,434
Nigeria	1,470	1,470	1,320	1,340	1,400	1,400
Egypt	1,150	1,350	1,100	1,270	1,250	1,270
Philippines	600	811	930	1,220	1,100	1,250
Colombia	908	943	955	955	955	1,068
Russia	750	810	880	850	820	820
Vietnam	603	674	765	786	802	802
Other	13,117	13,418	13,442	14,486	15,148	15,148
<b>Total</b>	<b>57,571</b>	<b>58,737</b>	<b>59,182</b>	<b>61,458</b>	<b>63,944</b>	<b>64,524</b>
<b>Ending Stocks</b>						
Indonesia	3,210	2,734	2,958	2,255	3,405	3,405
Malaysia	2,090	2,641	1,546	2,016	2,899	2,899
India	370	539	499	390	490	590
Thailand	168	335	293	410	633	525
Pakistan	296	382	287	292	307	307
Other	3,411	3,519	3,107	3,283	3,128	3,211
<b>Total</b>	<b>9,545</b>	<b>10,150</b>	<b>8,690</b>	<b>8,646</b>	<b>10,862</b>	<b>10,937</b>

**Table 12: Rapeseed and Products: World Supply and Distribution**  
**Thousand Metric Tons**

	Marketing Year	Meal, Rapeseed			Oil, Rapeseed			Oilseed, Rapeseed		
		2015/16	2016/17	2017/18	2015/16	2016/17	2017/18	2015/16	2016/17	2017/18
<b>Production</b>										
China	(Oct-Sep)	11,069	10,771	10,414	7,254	7,059	6,825	14,931	14,546	13,100
India	(Oct-Sep)	2,985	3,460	3,350	1,900	2,200	2,100	5,920	7,091	6,500
Canada	(Aug-Jul)	4,698	5,200	5,200	3,625	4,020	4,020	18,377	19,600	21,500
Japan	(Oct-Sep)	1,343	1,340	1,360	1,050	1,061	1,075	3	4	4
European Union	(Jul-Jun)	13,851	13,908	14,250	10,157	10,199	10,450	21,997	20,543	22,100
Other		5,507	5,357	5,683	3,872	3,784	3,992	8,733	9,472	9,894
<b>World Total</b>		<b>39,453</b>	<b>40,036</b>	<b>40,257</b>	<b>27,858</b>	<b>28,323</b>	<b>28,462</b>	<b>69,961</b>	<b>71,256</b>	<b>73,098</b>
<b>Imports</b>										
China	(Oct-Sep)	359	875	900	768	802	750	4,011	4,260	4,700
India	(Oct-Sep)	3	0	0	383	317	430	0	0	0
Canada	(Aug-Jul)	21	25	25	46	54	25	105	95	100
Japan	(Oct-Sep)	15	8	7	16	15	18	2,387	2,392	2,450
European Union	(Jul-Jun)	409	219	300	207	153	150	3,493	4,225	4,200
Other		4,902	4,774	4,649	2,716	3,017	3,095	4,423	4,679	4,977
<b>World Total</b>		<b>5,709</b>	<b>5,901</b>	<b>5,881</b>	<b>4,136</b>	<b>4,358</b>	<b>4,468</b>	<b>14,419</b>	<b>15,651</b>	<b>16,427</b>
<b>Exports</b>										
China	(Oct-Sep)	114	12	15	3	18	10	1	0	0
India	(Oct-Sep)	291	403	275	3	3	3	0	0	0
Canada	(Aug-Jul)	4,100	4,677	4,800	2,770	3,130	3,170	10,282	11,125	11,500
Japan	(Oct-Sep)	8	7	5	1	1	1	0	0	0
European Union	(Jul-Jun)	470	511	400	352	344	300	339	319	350
Other		706	408	633	1,039	1,026	1,067	3,725	4,459	4,881
<b>World Total</b>		<b>5,689</b>	<b>6,018</b>	<b>6,128</b>	<b>4,168</b>	<b>4,522</b>	<b>4,551</b>	<b>14,347</b>	<b>15,903</b>	<b>16,731</b>
<b>Domestic Consumption</b>										
China	(Oct-Sep)	11,314	11,634	11,299	8,550	8,700	8,100	19,200	18,700	18,100
India	(Oct-Sep)	2,600	2,897	3,235	2,280	2,517	2,555	5,930	6,900	6,670
Canada	(Aug-Jul)	626	540	450	779	959	995	8,726	9,238	9,248
Japan	(Oct-Sep)	1,325	1,360	1,370	1,071	1,079	1,081	2,419	2,442	2,455
European Union	(Jul-Jun)	13,800	13,850	14,000	10,050	10,150	10,300	25,200	25,300	25,900
Other		9,721	9,714	9,723	5,586	5,806	6,055	9,492	9,648	10,096
<b>World Total</b>		<b>39,386</b>	<b>39,995</b>	<b>40,077</b>	<b>28,316</b>	<b>29,211</b>	<b>29,086</b>	<b>70,967</b>	<b>72,228</b>	<b>72,469</b>
<b>Ending Stocks</b>										
China	(Oct-Sep)	0	0	0	3,633	2,776	2,241	1,240	1,346	1,046
India	(Oct-Sep)	245	405	245	222	219	191	469	660	490
Canada	(Aug-Jul)	92	100	75	500	485	365	2,016	1,348	2,200
Japan	(Oct-Sep)	61	42	34	31	27	38	67	21	20
European Union	(Jul-Jun)	408	174	324	475	333	333	1,935	1,084	1,134
Other		172	181	157	409	378	343	883	927	821
<b>World Total</b>		<b>978</b>	<b>902</b>	<b>835</b>	<b>5,270</b>	<b>4,218</b>	<b>3,511</b>	<b>6,610</b>	<b>5,386</b>	<b>5,711</b>

**Table 13: Sunflowerseed and Products: World Supply and Distribution**  
**Thousand Metric Tons**

Marketing Year	Oilseed, Sunflowerseed			Meal, Sunflowerseed			Oil, Sunflowerseed			
	2015/16	2016/17	2017/18	2015/16	2016/17	2017/18	2015/16	2016/17	2017/18	
<b>Production</b>										
Argentina	(Mar-Feb)	2,700	3,400	3,600	1,141	1,330	1,452	1,142	1,353	1,465
Russia	(Sep-Aug)	9,173	10,858	10,500	3,510	4,167	4,105	3,530	4,192	4,130
Turkey	(Sep-Aug)	1,100	1,320	1,600	743	963	1,034	587	761	818
Ukraine	(Sep-Aug)	11,900	15,200	13,000	4,811	5,986	5,369	5,010	6,351	5,590
European Union	(Oct-Sep)	7,721	8,573	9,300	3,888	4,266	4,482	3,042	3,338	3,507
Other		7,702	8,258	7,767	2,409	2,550	2,597	2,066	2,174	2,206
<b>World Total</b>		40,296	47,609	45,767	16,502	19,262	19,039	15,377	18,169	17,716
<b>Imports</b>										
Argentina	(Mar-Feb)	0	0	0	0	0	0	0	0	0
Russia	(Sep-Aug)	121	107	50	7	11	5	3	18	15
Turkey	(Sep-Aug)	396	591	450	801	958	850	686	793	700
Ukraine	(Sep-Aug)	22	24	20	1	1	0	1	0	2
European Union	(Oct-Sep)	622	675	500	3,295	3,706	3,700	1,418	1,823	1,500
Other		704	727	816	1,850	2,344	2,437	4,890	6,369	6,061
<b>World Total</b>		1,865	2,124	1,836	5,954	7,020	6,992	6,998	9,003	8,278
<b>Exports</b>										
Argentina	(Mar-Feb)	308	75	75	813	750	825	606	790	750
Russia	(Sep-Aug)	107	367	100	1,211	1,300	1,400	1,540	2,178	2,000
Turkey	(Sep-Aug)	42	47	55	4	4	5	583	635	500
Ukraine	(Sep-Aug)	83	191	100	3,817	4,807	4,500	4,500	5,851	5,000
European Union	(Oct-Sep)	424	353	350	214	275	200	374	459	400
Other		1,042	1,444	1,275	244	210	236	506	498	450
<b>World Total</b>		2,006	2,477	1,955	6,303	7,346	7,166	8,109	10,411	9,100
<b>Domestic Consumption</b>										
Argentina	(Mar-Feb)	2,834	3,284	3,556	530	550	625	697	697	701
Russia	(Sep-Aug)	9,070	10,670	10,520	2,250	2,800	2,900	1,950	2,065	2,130
Turkey	(Sep-Aug)	1,452	1,862	2,002	1,600	1,850	1,930	930	980	1,010
Ukraine	(Sep-Aug)	11,820	14,780	13,180	900	1,150	1,100	590	585	590
European Union	(Oct-Sep)	8,220	8,940	9,340	6,960	7,860	7,960	4,230	4,560	4,660
Other		7,256	7,412	7,536	4,044	4,685	4,821	6,771	7,800	8,041
<b>World Total</b>		40,652	46,948	46,134	16,284	18,895	19,336	15,168	16,687	17,132
<b>Ending Stocks</b>										
Argentina	(Mar-Feb)	596	637	606	26	56	58	220	86	100
Russia	(Sep-Aug)	252	180	110	249	327	137	92	59	74
Turkey	(Sep-Aug)	47	49	42	83	150	99	84	23	31
Ukraine	(Sep-Aug)	168	421	161	465	495	264	215	130	132
European Union	(Oct-Sep)	648	603	713	389	226	248	158	300	247
Other		556	685	457	144	143	120	743	988	764
<b>World Total</b>		2,267	2,575	2,089	1,356	1,397	926	1,512	1,586	1,348

**Table 14: Minor Vegetable Oils: World Supply and Distribution**  
**Thousand Metric Tons**

Marketing Year	Oil, Peanut			Oil, Cottonseed			Oil, Olive			
	2015/16	2016/17	2017/18	2015/16	2016/17	2017/18	2015/16	2016/17	2017/18	
<b>Production</b>										
China	(Oct-Sep)	2,816	2,896	2,960	1,091	1,115	1,360	5	5	5
India	(Oct-Sep)	875	1,240	1,190	1,230	1,160	1,275	nr	nr	nr
Turkey	(Nov-Oct)	7	7	7	157	187	250	170	180	200
United States	(Aug-Jul)	103	129	118	211	246	277	14	15	16
European Union	(Oct-Sep)	12	12	12	39	38	44	2,320	1,750	1,800
Other		1,629	1,611	1,631	1,563	1,671	1,851	609	537	682
<b>World Total</b>		<b>5,442</b>	<b>5,895</b>	<b>5,918</b>	<b>4,291</b>	<b>4,417</b>	<b>5,057</b>	<b>3,118</b>	<b>2,487</b>	<b>2,703</b>
<b>Imports</b>										
China	(Oct-Sep)	113	111	130	0	0	0	41	45	45
India	(Oct-Sep)	0	0	0	0	0	0	nr	nr	nr
Turkey	(Nov-Oct)	0	0	0	0	0	0	1	0	1
United States	(Aug-Jul)	42	18	23	3	0	2	330	316	322
European Union	(Oct-Sep)	65	73	70	2	1	1	100	110	130
Other		20	21	20	48	51	47	300	295	311
<b>World Total</b>		<b>240</b>	<b>223</b>	<b>243</b>	<b>53</b>	<b>52</b>	<b>50</b>	<b>772</b>	<b>766</b>	<b>809</b>
<b>Exports</b>										
China	(Oct-Sep)	10	8	5	1	2	5	0	0	0
India	(Oct-Sep)	11	20	15	0	0	0	nr	nr	nr
Turkey	(Nov-Oct)	0	0	0	2	1	2	14	48	50
United States	(Aug-Jul)	5	5	7	25	47	41	8	12	12
European Union	(Oct-Sep)	5	4	5	0	0	0	672	627	600
Other		228	191	224	35	22	45	202	191	275
<b>World Total</b>		<b>259</b>	<b>228</b>	<b>256</b>	<b>63</b>	<b>72</b>	<b>93</b>	<b>896</b>	<b>878</b>	<b>937</b>
<b>Domestic Consumption</b>										
China	(Oct-Sep)	2,919	2,999	3,085	1,090	1,113	1,355	46	50	50
India	(Oct-Sep)	874	1,160	1,245	1,275	1,165	1,265	nr	nr	nr
Turkey	(Nov-Oct)	7	7	7	155	185	239	145	145	150
United States	(Aug-Jul)	140	140	134	197	198	235	336	319	326
European Union	(Oct-Sep)	72	80	77	41	39	45	1,570	1,370	1,320
Other		1,428	1,417	1,422	1,642	1,695	1,832	712	696	731
<b>World Total</b>		<b>5,440</b>	<b>5,803</b>	<b>5,970</b>	<b>4,400</b>	<b>4,395</b>	<b>4,971</b>	<b>2,809</b>	<b>2,580</b>	<b>2,577</b>
<b>Ending Stocks</b>										
China	(Oct-Sep)	0	0	0	0	0	0	0	0	0
India	(Oct-Sep)	82	142	72	37	32	42	nr	nr	nr
Turkey	(Nov-Oct)	0	0	0	4	5	14	39	26	27
United States	(Aug-Jul)	9	11	11	19	20	23	0	0	0
European Union	(Oct-Sep)	3	4	4	0	0	0	311	174	184
Other		40	64	69	44	49	70	139	84	71
<b>World Total</b>		<b>134</b>	<b>221</b>	<b>156</b>	<b>104</b>	<b>106</b>	<b>149</b>	<b>489</b>	<b>284</b>	<b>282</b>

**Table 15: World Oilseeds and Products Supply and Distribution**

Million Metric Tons

	Area Harvested	Beginning Stocks	Production	Imports	Total Supply	Exports	Food Use Dom.	Domestic Consumption	Ending Stocks
<b>Major Oilseeds</b>									
2004/05	218.98	46.81	382.73	72.72	502.26	74.43	30.52	368.31	59.52
2005/06	220.69	59.52	394.03	75.41	528.96	75.60	31.73	387.02	66.34
2006/07	223.39	66.34	405.76	80.84	552.94	82.89	31.56	394.77	75.28
2007/08	219.54	75.28	391.45	90.46	557.18	91.76	31.59	402.58	62.85
2008/09	230.45	62.85	398.98	94.56	556.38	94.15	33.63	405.00	57.24
2009/10	235.79	57.24	447.52	102.60	607.35	107.61	34.78	425.52	74.22
2010/11	245.27	74.22	461.14	105.03	640.40	109.00	36.25	446.76	84.64
2011/12	248.18	84.64	447.64	113.15	645.42	111.29	36.32	466.98	67.15
2012/13	256.20	67.15	475.57	114.78	657.50	118.11	36.52	470.45	68.95
2013/14	260.05	68.95	504.22	133.57	706.73	133.77	37.49	494.15	78.81
2014/15	264.76	78.81	537.58	143.60	759.99	147.15	38.57	519.47	93.37
2015/16	263.06	93.37	521.50	153.79	768.65	153.28	39.49	524.76	90.61
2016/17	265.31	90.61	574.97	166.16	831.75	170.38	41.65	553.36	108.01
2017/18	276.67	108.01	578.62	172.83	859.46	175.85	42.78	573.18	110.43
<b>Major Protein Meals</b>									
2004/05	nr	8.37	206.49	59.47	274.32	62.05	0.29	204.16	8.12
2005/06	nr	8.12	217.22	65.68	291.02	67.35	0.28	214.90	8.77
2006/07	nr	8.77	224.23	67.30	300.30	69.25	0.27	220.82	10.24
2007/08	nr	10.24	231.65	70.43	312.32	72.93	0.29	229.14	10.24
2008/09	nr	10.24	230.01	68.43	308.69	70.15	0.32	230.19	8.35
2009/10	nr	8.35	244.48	70.50	323.34	72.70	0.40	240.54	10.10
2010/11	nr	10.10	257.18	75.12	342.40	77.90	0.33	251.60	12.89
2011/12	nr	12.89	267.83	79.17	359.89	81.12	0.40	264.21	14.57
2012/13	nr	14.57	269.76	74.50	358.83	79.37	0.43	266.74	12.72
2013/14	nr	12.72	283.36	80.60	376.68	83.30	0.44	279.18	14.21
2014/15	nr	14.21	301.08	82.45	397.73	86.18	0.45	294.26	17.29
2015/16	nr	17.29	306.39	83.23	406.91	86.89	0.48	303.76	16.26
2016/17	nr	16.26	322.21	84.06	422.53	88.35	0.59	318.30	15.88
2017/18	nr	15.88	333.67	86.90	436.45	91.06	0.72	331.20	14.19
<b>Major Vegetable Oils</b>									
2004/05	12.85	11.21	112.19	40.17	163.58	43.90	91.52	107.24	12.44
2005/06	13.60	12.44	119.90	43.94	176.27	48.62	94.33	113.50	14.16
2006/07	14.19	14.16	122.78	47.34	184.27	50.56	96.79	119.08	14.64
2007/08	14.72	14.64	129.74	50.50	194.89	54.73	99.65	125.23	14.93
2008/09	15.59	14.93	134.99	54.00	203.92	56.87	103.41	131.36	15.69
2009/10	16.36	15.69	142.47	55.66	213.82	58.89	107.54	138.22	16.71
2010/11	17.05	16.71	149.15	57.08	222.94	60.65	110.36	143.01	19.28
2011/12	17.63	19.28	158.32	61.89	239.49	64.75	116.29	152.07	22.68
2012/13	18.37	22.68	161.71	65.53	249.92	68.31	122.03	159.52	22.09
2013/14	19.12	22.09	171.85	67.23	261.17	70.22	126.59	166.77	24.18
2014/15	19.81	24.18	177.35	71.09	272.62	76.48	131.91	171.67	24.47
2015/16	20.44	24.47	176.91	70.59	271.97	73.56	135.59	177.60	20.81
2016/17	20.92	20.81	189.06	74.62	284.49	80.76	141.13	184.33	19.40
2017/18	21.62	19.40	197.12	76.15	292.66	81.11	145.54	190.83	20.72

Based on the aggregate of different marketing years

**Table 16: World Soybeans and Products Supply and Distribution**

Million Metric Tons

	Area Harvested	Beginning Stocks	Production	Imports	Total Supply	Exports	Crush	Domestic Consumption	Ending Stocks
<b>Oilseed, Soybean</b>									
2004/05	93.35	39.00	215.49	63.56	318.05	64.83	175.81	204.66	48.56
2005/06	93.03	48.56	220.78	64.10	333.45	63.64	186.29	215.94	53.87
2006/07	94.92	53.87	235.70	69.05	358.61	70.91	195.52	224.74	62.96
2007/08	91.05	62.96	219.15	78.68	360.79	78.70	202.60	229.75	52.35
2008/09	96.46	52.35	212.07	77.90	342.32	76.71	194.78	222.69	42.92
2009/10	102.60	42.92	260.76	87.51	391.19	92.06	210.32	239.03	60.10
2010/11	103.43	60.10	264.40	89.79	414.29	91.57	222.21	252.80	69.92
2011/12	102.90	69.92	240.44	94.55	404.91	91.77	229.20	259.43	53.71
2012/13	110.00	53.71	268.47	97.19	419.37	100.36	231.71	263.10	55.91
2013/14	112.63	55.91	282.75	113.07	451.72	112.72	242.83	276.59	62.41
2014/15	118.45	62.41	320.02	124.36	506.79	126.22	264.86	302.84	77.73
2015/16	120.43	77.73	313.77	133.33	524.83	132.55	275.31	314.35	77.92
2016/17	120.30	77.92	351.32	144.25	573.50	147.22	288.54	330.14	96.14
2017/18	125.81	96.14	346.92	150.24	593.29	151.95	300.10	343.20	98.14
<b>Meal, Soybean</b>									
2004/05	nr	5.88	139.03	46.00	190.91	48.22	175.83	136.84	5.85
2005/06	nr	5.85	146.68	51.38	203.91	53.03	186.31	144.81	6.07
2006/07	nr	6.07	153.78	52.74	212.60	54.84	195.54	150.35	7.40
2007/08	nr	7.40	158.98	54.78	221.17	56.50	202.62	157.00	7.66
2008/09	nr	7.66	152.99	51.67	212.32	53.27	194.86	153.93	5.12
2009/10	nr	5.12	165.63	53.54	224.28	55.94	210.40	161.54	6.81
2010/11	nr	6.81	175.02	56.87	238.70	58.89	222.30	170.61	9.20
2011/12	nr	9.20	180.95	56.97	247.12	58.70	229.31	177.76	10.66
2012/13	nr	10.66	182.17	53.84	246.66	58.39	231.85	178.55	9.72
2013/14	nr	9.72	190.43	57.94	258.10	60.64	242.99	186.73	10.73
2014/15	nr	10.73	208.56	60.66	279.95	64.40	265.05	201.93	13.62
2015/16	nr	13.62	216.10	61.86	291.57	65.42	275.54	213.38	12.77
2016/17	nr	12.77	226.45	59.80	299.02	64.68	288.85	221.99	12.35
2017/18	nr	12.35	235.61	63.42	311.39	67.08	300.40	233.07	11.24
<b>Oil, Soybean</b>									
2004/05	nr	2.89	32.66	8.38	43.93	9.12	175.81	31.51	3.29
2005/06	nr	3.29	34.91	8.80	47.01	9.79	186.29	33.39	3.83
2006/07	nr	3.83	36.41	9.77	50.02	10.50	195.52	35.43	4.09
2007/08	nr	4.09	37.79	10.29	52.16	10.88	202.60	37.30	3.98
2008/09	nr	3.98	36.12	9.00	49.11	9.21	194.78	36.35	3.55
2009/10	nr	3.55	38.92	8.48	50.95	9.19	210.32	38.16	3.61
2010/11	nr	3.61	41.46	9.38	54.45	9.64	222.21	40.49	4.33
2011/12	nr	4.33	42.82	7.99	55.14	8.52	229.20	42.44	4.18
2012/13	nr	4.18	43.32	8.50	56.00	9.32	231.71	42.59	4.09
2013/14	nr	4.09	45.23	9.25	58.57	9.42	242.83	45.24	3.91
2014/15	nr	3.91	49.31	10.03	63.25	11.10	264.86	47.83	4.32
2015/16	nr	4.32	51.59	11.63	67.55	11.77	275.31	52.21	3.57
2016/17	nr	3.57	53.95	10.94	68.46	11.31	288.52	53.85	3.29
2017/18	nr	3.29	55.93	11.06	70.29	11.25	300.10	55.97	3.07

Based on the aggregate of different marketing years, primarily October through September.

**Table 17: World Rapeseed and Products Supply and Distribution**

Million Metric Tons

	Area Harvested	Beginning Stocks	Production	Imports	Total Supply	Exports	Food Use Dom.	Domestic Consumption	Ending Stocks
<b>Oilseed, Rapeseed</b>									
2004/05	26.88	2.19	46.24	5.00	53.43	4.91	0.35	43.40	5.12
2005/06	27.36	5.12	48.93	6.71	60.76	6.98	0.35	48.16	5.63
2006/07	26.76	5.63	45.81	7.02	58.46	6.65	0.35	46.63	5.18
2007/08	28.66	5.18	48.37	7.57	61.12	8.18	0.35	49.23	3.70
2008/09	31.02	3.70	58.01	12.15	73.86	12.20	0.40	54.86	6.80
2009/10	30.85	6.80	61.06	10.81	78.67	10.90	0.42	59.77	8.00
2010/11	33.71	8.00	60.94	10.18	79.12	10.93	0.45	60.09	8.10
2011/12	33.51	8.10	61.64	13.24	82.98	12.99	0.45	63.79	6.21
2012/13	36.05	6.21	64.06	12.83	83.10	12.56	0.47	65.69	4.85
2013/14	36.01	4.85	71.68	15.55	92.08	15.10	0.49	69.48	7.50
2014/15	35.52	7.50	71.45	14.32	93.28	15.11	0.55	70.63	7.54
2015/16	33.86	7.54	69.96	14.42	91.92	14.35	0.65	70.97	6.61
2016/17	34.30	6.61	71.26	15.65	93.52	15.90	0.75	72.23	5.39
2017/18	35.72	5.39	73.10	16.43	94.91	16.73	0.65	72.47	5.71
<b>Meal, Rapeseed</b>									
2004/05	nr	0.93	23.71	2.29	26.93	2.51	0.00	23.71	0.71
2005/06	nr	0.71	26.21	2.63	29.55	2.68	0.00	26.09	0.78
2006/07	nr	0.78	25.59	3.21	29.58	3.00	0.00	25.88	0.70
2007/08	nr	0.70	27.24	3.88	31.82	3.93	0.00	27.30	0.59
2008/09	nr	0.59	30.36	3.77	34.73	3.75	0.00	30.17	0.80
2009/10	nr	0.80	33.04	3.88	37.72	3.63	0.00	32.81	1.28
2010/11	nr	1.28	33.33	5.33	39.94	5.28	0.00	33.55	1.12
2011/12	nr	1.12	35.26	5.56	41.94	5.56	0.00	35.24	1.14
2012/13	nr	1.14	36.49	5.61	43.24	5.70	0.00	36.56	0.99
2013/14	nr	0.99	38.78	6.50	46.26	6.35	0.00	38.94	0.97
2014/15	nr	0.97	39.09	5.99	46.05	6.07	0.00	39.09	0.89
2015/16	nr	0.89	39.45	5.71	46.05	5.69	0.00	39.39	0.98
2016/17	nr	0.98	40.04	5.90	46.92	6.02	0.00	40.00	0.90
2017/18	nr	0.90	40.26	5.88	47.04	6.13	0.00	40.08	0.84
<b>Oil, Rapeseed</b>									
2004/05	nr	0.60	16.10	1.20	17.91	1.29	13.14	15.82	0.79
2005/06	nr	0.79	18.03	1.48	20.30	1.65	13.70	17.60	1.05
2006/07	nr	1.05	17.82	2.21	21.08	2.00	13.27	18.24	0.85
2007/08	nr	0.85	18.96	2.05	21.86	1.91	13.53	18.81	1.14
2008/09	nr	1.14	21.23	2.48	24.85	2.47	14.53	21.11	1.27
2009/10	nr	1.27	23.28	2.96	27.51	2.75	15.30	22.81	1.95
2010/11	nr	1.95	23.53	3.38	28.86	3.43	15.92	23.46	1.96
2011/12	nr	1.96	24.91	4.08	30.95	3.98	16.55	23.92	3.05
2012/13	nr	3.05	25.69	3.94	32.67	3.95	17.02	24.28	4.44
2013/14	nr	4.44	27.28	3.82	35.53	3.83	18.26	26.17	5.54
2014/15	nr	5.54	27.62	3.95	37.11	4.06	19.12	27.28	5.76
2015/16	nr	5.76	27.86	4.14	37.75	4.17	19.95	28.32	5.27
2016/17	nr	5.27	28.32	4.36	37.95	4.52	20.65	29.21	4.22
2017/18	nr	4.22	28.46	4.47	37.15	4.55	20.47	29.09	3.51

Based on the aggregate of different marketing years.



**Table 18: World Sunflower and Products Supply and Distribution**

Million Metric Tons

	Area Harvested	Beginning Stocks	Production	Imports	Exports	Domestic Consumption	Ending Stocks
<b>Oilseed, Sunflowerseed</b>							
2004/05	20.69	3.38	25.39	1.16	1.23	25.74	2.96
2005/06	22.72	2.96	29.92	1.42	1.52	29.31	3.48
2006/07	23.45	3.48	30.08	1.81	1.91	29.44	4.02
2007/08	21.34	4.02	27.35	1.29	1.46	27.48	3.72
2008/09	23.89	3.72	32.89	1.92	2.15	32.53	3.85
2009/10	22.99	3.85	31.56	1.56	1.55	32.82	2.59
2010/11	23.11	2.59	32.72	1.62	1.78	32.83	2.32
2011/12	24.64	2.32	38.66	1.70	1.93	38.31	2.45
2012/13	23.61	2.45	35.02	1.36	1.45	34.68	2.69
2013/14	24.03	2.69	41.54	1.62	1.96	40.89	3.01
2014/15	23.15	3.01	39.25	1.56	1.66	39.39	2.76
2015/16	23.29	2.76	40.30	1.87	2.01	40.65	2.27
2016/17	25.24	2.27	47.61	2.12	2.48	46.95	2.58
2017/18	25.23	2.58	45.77	1.84	1.96	46.13	2.09
<b>Meal, Sunflowerseed</b>							
2004/05	nr	0.22	10.30	2.55	2.77	10.08	0.22
2005/06	nr	0.22	11.72	3.35	3.57	11.41	0.31
2006/07	nr	0.31	11.87	3.44	3.49	11.90	0.24
2007/08	nr	0.24	11.11	2.96	3.31	10.69	0.30
2008/09	nr	0.30	13.07	4.20	4.30	12.47	0.80
2009/10	nr	0.80	13.42	3.69	4.09	12.83	0.98
2010/11	nr	0.98	13.31	4.06	4.57	12.70	1.08
2011/12	nr	1.08	15.62	6.42	6.80	14.63	1.69
2012/13	nr	1.69	14.16	4.93	5.13	14.80	0.84
2013/14	nr	0.84	16.85	5.76	6.22	15.91	1.31
2014/15	nr	1.31	16.13	5.52	5.87	15.61	1.49
2015/16	nr	1.49	16.50	5.95	6.30	16.28	1.36
2016/17	nr	1.36	19.26	7.02	7.35	18.90	1.40
2017/18	nr	1.40	19.04	6.99	7.17	19.34	0.93
<b>Oil, Sunflowerseed</b>							
2004/05	nr	0.83	9.19	2.17	2.58	8.58	1.02
2005/06	nr	1.02	10.56	3.31	3.92	9.77	1.21
2006/07	nr	1.21	10.74	3.46	4.05	10.16	1.20
2007/08	nr	1.20	10.16	2.78	3.53	9.41	1.20
2008/09	nr	1.20	11.88	4.15	4.55	10.75	1.93
2009/10	nr	1.93	12.12	3.81	4.50	11.46	1.89
2010/11	nr	1.89	12.09	3.70	4.54	11.37	1.77
2011/12	nr	1.77	14.36	5.83	6.48	12.50	2.98
2012/13	nr	2.98	12.87	5.16	5.57	13.12	2.33
2013/14	nr	2.33	15.45	6.97	7.78	14.15	2.81
2014/15	nr	2.81	14.92	6.18	7.38	14.11	2.41
2015/16	nr	2.41	15.38	7.00	8.11	15.17	1.51
2016/17	nr	1.51	18.17	9.00	10.41	16.69	1.59
2017/18	nr	1.59	17.72	8.28	9.10	17.13	1.35

Based on the aggregate of different marketing years, primarily September through August.

**Table 19: World Palm Oil, Coconut Oil, and Fish Meal Supply and Distribution**

Million Metric Tons

	Beginning Stocks	Production	Imports	Total Supply	Exports	Industrial Dom.	Food Use Dom.	Domestic Consumption	Ending Stocks
<b>Oil, Palm</b>									
2004/05	4.43	33.65	24.07	62.16	25.82	6.24	24.94	31.72	4.62
2005/06	4.62	36.04	25.63	66.28	27.99	6.94	25.32	32.80	5.48
2006/07	5.48	37.61	26.87	69.96	28.65	7.57	27.19	35.26	6.05
2007/08	6.05	41.46	30.35	77.85	32.78	8.85	29.74	39.16	5.92
2008/09	5.92	44.50	33.39	83.81	35.24	9.63	32.05	42.33	6.24
2009/10	6.24	46.40	34.57	87.21	36.40	10.07	33.47	44.13	6.68
2010/11	6.68	49.22	35.37	91.27	37.23	10.73	34.38	45.68	8.36
2011/12	8.36	52.57	38.51	99.44	39.79	12.47	37.07	50.19	9.46
2012/13	9.46	56.43	42.11	107.99	43.05	14.66	40.63	55.94	9.01
2013/14	9.01	59.36	41.94	110.31	43.19	15.57	41.36	57.57	9.55
2014/15	9.55	61.87	44.84	116.26	47.37	14.44	43.60	58.74	10.15
2015/16	10.15	58.90	42.55	111.60	43.73	15.90	42.58	59.18	8.69
2016/17	8.69	64.87	45.17	118.73	48.63	16.04	44.70	61.46	8.65
2017/18	8.65	69.77	47.08	125.50	50.04	17.07	46.67	64.52	10.94
<b>Oil, Coconut</b>									
2004/05	0.51	3.42	1.91	5.84	2.08	1.40	1.80	3.29	0.47
2005/06	0.47	3.34	2.04	5.85	2.05	1.43	1.78	3.35	0.44
2006/07	0.44	3.07	1.88	5.39	1.74	1.43	1.66	3.18	0.47
2007/08	0.47	3.40	1.91	5.78	1.93	1.51	1.77	3.31	0.55
2008/09	0.55	3.36	1.67	5.58	1.48	1.56	1.65	3.24	0.86
2009/10	0.86	3.47	2.30	6.63	2.07	1.70	2.09	3.82	0.74
2010/11	0.74	3.59	1.80	6.13	1.80	1.67	1.87	3.58	0.76
2011/12	0.76	3.39	1.84	5.98	1.86	1.55	1.93	3.51	0.61
2012/13	0.61	3.62	1.89	6.13	1.92	1.71	2.00	3.75	0.46
2013/14	0.46	3.38	1.74	5.58	1.91	1.55	1.75	3.34	0.33
2014/15	0.33	3.37	1.82	5.53	1.94	1.52	1.74	3.29	0.29
2015/16	0.29	3.32	1.58	5.19	1.56	1.55	1.68	3.26	0.37
2016/17	0.37	3.35	1.45	5.18	1.67	1.58	1.61	3.22	0.29
2017/18	0.29	3.44	1.42	5.15	1.70	1.56	1.55	3.14	0.31
<b>Meal, Fish</b>									
2004/05	0.83	5.56	3.60	10.00	3.70	0.06	0.00	5.59	0.71
2005/06	0.71	4.99	3.05	8.75	2.80	0.05	0.00	5.21	0.73
2006/07	0.73	5.14	2.82	8.69	2.65	0.05	0.00	5.08	0.97
2007/08	0.97	5.14	3.17	9.27	2.94	0.05	0.00	5.50	0.83
2008/09	0.83	5.20	3.26	9.29	3.08	0.05	0.00	5.51	0.71
2009/10	0.71	4.24	2.76	7.71	2.41	0.05	0.00	5.03	0.28
2010/11	0.28	5.55	2.77	8.60	2.69	0.05	0.00	5.22	0.69
2011/12	0.69	4.71	3.05	8.44	2.80	0.05	0.00	5.36	0.28
2012/13	0.28	4.84	2.47	7.59	2.32	0.05	0.00	4.81	0.45
2013/14	0.45	4.45	2.74	7.64	2.47	0.05	0.00	4.94	0.23
2014/15	0.23	4.69	2.50	7.42	2.28	0.05	0.00	4.87	0.26
2015/16	0.26	4.51	2.47	7.24	2.22	0.05	0.00	4.76	0.27
2016/17	0.27	5.06	3.00	8.33	2.60	0.05	0.00	5.45	0.28
2017/18	0.28	4.60	2.49	7.37	2.23	0.05	0.00	4.86	0.28

Based on the aggregate of different marketing years.

**Table 20: United States Oilseeds and Products Supply and Distribution Local Marketing Year**

Thousand Metric Tons

	Area Harvested	Beginning Stocks	Production	Imports	Total Supply	Exports	Crush	Domestic Consumption	Ending Stocks
<b>Major Oilseeds</b>									
2004/05	36,808	4,152	95,941	681	100,774	30,708	50,167	61,777	8,289
2005/06	36,587	8,289	95,671	664	104,624	26,611	51,897	63,812	14,201
2006/07	36,962	14,201	96,843	1,033	112,077	31,647	53,483	63,407	17,023
2007/08	31,970	17,023	82,453	1,265	100,741	33,045	53,495	60,787	6,909
2008/09	35,265	6,909	89,201	1,295	97,405	35,694	49,342	56,091	5,620
2009/10	35,511	5,620	98,951	1,066	105,637	41,691	51,483	58,402	5,544
2010/11	37,179	5,544	100,432	945	106,921	41,938	49,323	57,664	7,319
2011/12	35,131	7,319	92,442	1,285	101,046	37,813	50,316	57,621	5,612
2012/13	36,676	5,612	93,323	1,605	100,540	37,156	50,250	57,621	5,763
2013/14	35,438	5,763	99,016	3,067	107,846	45,569	51,459	58,324	3,953
2014/15	38,983	3,953	116,029	1,851	121,833	51,116	55,111	63,961	6,756
2015/16	38,398	6,756	115,879	1,130	123,765	53,959	55,055	62,938	6,868
2016/17	39,245	6,868	126,935	1,499	135,302	60,278	56,197	65,424	9,600
2017/18	42,898	9,600	131,308	1,441	142,349	58,408	57,578	67,706	16,235
<b>Major Protein Meals</b>									
2004/05	nr	273	39,191	1,537	41,001	6,954	50,167	33,832	215
2005/06	nr	215	39,894	1,663	41,772	7,608	51,897	33,803	361
2006/07	nr	361	41,390	1,709	43,460	8,264	53,483	34,811	385
2007/08	nr	385	40,786	1,992	43,163	8,706	53,495	34,123	334
2008/09	nr	334	37,631	1,817	39,782	7,940	49,342	31,596	246
2009/10	nr	246	39,992	1,344	41,582	10,308	51,483	30,933	341
2010/11	nr	341	38,032	2,241	40,614	8,488	49,323	31,748	378
2011/12	nr	378	39,450	3,032	42,860	9,170	50,316	33,354	336
2012/13	nr	336	38,593	3,393	42,322	10,461	50,250	31,546	315
2013/14	nr	315	39,293	3,798	43,406	10,803	51,459	32,311	292
2014/15	nr	292	43,210	3,873	47,375	12,144	55,111	34,941	290
2015/16	nr	290	42,778	4,078	47,146	11,179	55,055	35,692	275
2016/17	nr	275	43,063	3,921	47,259	10,829	56,197	36,022	408
2017/18	nr	408	44,328	3,707	48,443	11,407	57,578	36,707	329
<b>Major Vegetable Oils</b>									
2004/05	0	795	9,769	1,841	12,405	838	50,167	10,443	1,124
2005/06	0	1,124	10,435	2,379	13,938	899	51,897	11,242	1,797
2006/07	0	1,797	10,450	2,527	14,774	1,333	53,483	11,700	1,741
2007/08	0	1,741	10,544	3,109	15,394	1,679	53,495	12,251	1,464
2008/09	0	1,464	9,667	3,230	14,361	1,457	49,342	11,167	1,737
2009/10	0	1,737	10,058	3,338	15,133	1,948	51,483	11,194	1,991
2010/11	0	1,991	9,775	3,612	15,378	1,861	49,323	11,794	1,723
2011/12	0	1,723	10,032	3,831	15,586	1,146	50,316	12,873	1,567
2012/13	0	1,567	10,231	3,801	15,599	1,387	50,250	13,068	1,144
2013/14	0	1,144	10,427	4,016	15,587	1,116	51,459	13,499	972
2014/15	0	972	10,938	4,230	16,140	1,174	55,111	13,680	1,286
2015/16	0	1,286	11,211	4,527	17,024	1,248	55,055	14,574	1,202
2016/17	0	1,202	11,423	4,729	17,354	1,416	56,197	14,707	1,231
2017/18	0	1,231	11,597	4,859	17,687	1,100	57,578	15,480	1,107

Based on the aggregate of different marketing years

**Table 21: United States Soybeans and Products Supply and Distribution Local Marketing Years**

Thousand Metric Tons

	Area Harvested	Beginning Stocks	Production	Imports	Total Supply	Exports	Crush	Domestic Consumption	Ending Stocks
<b>Oilseed, Soybean</b>									
2004/05	29,930	3,059	85,016	152	88,227	29,860	46,160	51,407	6,960
2005/06	28,834	6,960	83,507	92	90,559	25,579	47,324	52,751	12,229
2006/07	30,190	12,229	87,001	246	99,476	30,386	49,198	53,473	15,617
2007/08	25,959	15,617	72,859	269	88,745	31,538	49,081	51,627	5,580
2008/09	30,222	5,580	80,749	361	86,690	34,817	45,230	48,112	3,761
2009/10	30,907	3,761	91,470	397	95,628	40,798	47,673	50,724	4,106
2010/11	31,003	4,106	90,663	393	95,162	40,959	44,851	48,351	5,852
2011/12	29,856	5,852	84,291	439	90,582	37,186	46,348	48,786	4,610
2012/13	30,814	4,610	82,791	1,103	88,504	36,129	45,967	48,550	3,825
2013/14	30,858	3,825	91,389	1,953	97,167	44,594	47,192	50,069	2,504
2014/15	33,423	2,504	106,878	904	110,286	50,143	50,975	54,955	5,188
2015/16	33,076	5,188	106,857	641	112,686	52,860	51,335	54,472	5,354
2016/17	33,466	5,354	116,920	605	122,879	59,157	51,681	55,514	8,208
2017/18	36,228	8,208	119,518	680	128,406	57,153	53,070	56,832	14,421
<b>Meal, Soybean</b>									
2004/05	nr	191	36,936	134	37,261	6,659	46,160	30,446	156
2005/06	nr	156	37,416	128	37,700	7,301	47,324	30,114	285
2006/07	nr	285	39,037	142	39,464	7,987	49,198	31,166	311
2007/08	nr	311	38,359	128	38,798	8,384	49,081	30,147	267
2008/09	nr	267	35,473	80	35,820	7,708	45,230	27,899	213
2009/10	nr	213	37,836	145	38,194	10,125	47,673	27,795	274
2010/11	nr	274	35,608	163	36,045	8,238	44,851	27,489	318
2011/12	nr	318	37,217	196	37,731	8,845	46,348	28,614	272
2012/13	nr	272	36,174	222	36,668	10,111	45,967	26,307	250
2013/14	nr	250	36,909	347	37,506	10,504	47,192	26,775	227
2014/15	nr	227	40,880	302	41,409	11,891	50,975	29,282	236
2015/16	nr	236	40,525	366	41,127	10,844	51,335	30,044	239
2016/17	nr	239	40,581	317	41,137	10,524	51,681	30,250	363
2017/18	nr	363	41,821	272	42,456	11,068	53,070	31,116	272
<b>Oil, Soybean</b>									
2004/05	nr	488	8,782	12	9,282	600	46,160	7,911	771
2005/06	nr	771	9,248	16	10,035	523	47,324	8,147	1,365
2006/07	nr	1,365	9,294	17	10,676	851	49,198	8,426	1,399
2007/08	nr	1,399	9,335	30	10,764	1,320	49,081	8,317	1,127
2008/09	nr	1,127	8,503	41	9,671	995	45,230	7,378	1,298
2009/10	nr	1,298	8,897	47	10,242	1,524	47,673	7,173	1,545
2010/11	nr	1,545	8,568	72	10,185	1,466	44,851	7,506	1,213
2011/12	nr	1,213	8,954	68	10,235	664	46,348	8,396	1,175
2012/13	nr	1,175	8,990	89	10,254	981	45,967	8,522	751
2013/14	nr	751	9,131	75	9,957	852	47,192	8,576	529
2014/15	nr	529	9,706	120	10,355	914	50,975	8,600	841
2015/16	nr	841	9,956	130	10,927	1,017	51,335	9,145	765
2016/17	nr	765	10,024	145	10,934	1,160	51,681	8,998	776
2017/18	nr	776	10,217	136	11,129	862	53,070	9,570	697

Data based on Local Marketing Year (MY). Soybeans are on a September/August MY, and Soybean Meal and Oil are on an October/September MY.

**Table 22: Brazil Soybeans and Products Supply and Distribution Local Marketing Years**

Thousand Metric Tons

	Area Harvested	Beginning Stocks	Production	Imports	Total Supply	Exports	Crush	Domestic Consumption	Ending Stocks
<b>Oilseed, Soybean (Local)</b>									
2004/05	22,917	4,548	53,000	352	57,900	22,799	29,728	32,413	2,688
2005/06	22,229	2,688	57,000	40	59,728	24,770	28,756	31,506	3,452
2006/07	20,700	3,452	59,000	108	62,560	23,805	31,511	34,261	4,494
2007/08	21,300	4,494	61,000	83	65,577	24,515	31,895	34,695	6,367
2008/09	21,700	6,367	57,800	124	64,291	28,041	30,779	33,579	2,671
2009/10	23,500	2,671	69,000	150	71,821	29,188	35,700	38,550	4,083
2010/11	24,200	4,083	75,300	40	79,423	33,789	37,264	40,164	5,470
2011/12	25,000	5,470	66,500	298	72,268	31,905	36,230	39,130	1,233
2012/13	27,700	1,233	82,000	240	83,473	42,826	36,432	39,378	1,269
2013/14	30,100	1,269	86,700	579	88,548	45,747	38,195	41,345	1,456
2014/15	32,100	1,456	97,200	329	98,985	54,635	40,339	43,700	650
2015/16	33,300	650	96,500	362	97,512	52,100	40,020	43,502	1,910
2016/17	33,900	1,910	114,100	253	116,263	68,806	42,275	45,857	1,600
2017/18	35,000	1,600	112,000	200	113,800	66,650	42,000	45,650	1,500
<b>Meal, Soybean (Local)</b>									
2004/05	nr	841	23,040	244	24,125	14,256	29,728	9,133	736
2005/06	nr	736	22,280	214	23,230	12,287	28,756	10,080	863
2006/07	nr	863	24,420	146	25,429	12,346	31,511	10,800	2,283
2007/08	nr	2,283	24,720	143	27,146	12,709	31,895	12,300	2,137
2008/09	nr	2,137	23,850	86	26,073	12,153	30,779	12,800	1,120
2009/10	nr	1,120	27,670	72	28,862	14,147	35,700	13,187	1,528
2010/11	nr	1,528	28,880	51	30,459	14,452	37,264	13,400	2,607
2011/12	nr	2,607	28,080	15	30,702	13,854	36,230	14,000	2,848
2012/13	nr	2,848	28,230	30	31,108	13,619	36,432	14,800	2,689
2013/14	nr	2,689	29,560	27	32,276	13,721	38,195	15,100	3,455
2014/15	nr	3,455	31,230	16	34,701	15,106	40,339	15,700	3,895
2015/16	nr	3,895	30,950	27	34,872	14,651	40,020	16,300	3,921
2016/17	nr	3,921	32,700	35	36,656	13,915	42,275	16,961	5,780
2017/18	nr	5,780	32,500	30	38,310	15,350	42,000	17,600	5,360
<b>Oil, Soybean (Local)</b>									
2004/05	nr	348	5,705	3	6,056	2,697	29,728	3,099	260
2005/06	nr	260	5,520	18	5,798	2,315	28,756	3,211	272
2006/07	nr	272	6,050	62	6,384	2,521	31,511	3,505	358
2007/08	nr	358	6,120	9	6,487	2,198	31,895	4,005	284
2008/09	nr	284	5,910	41	6,235	1,496	30,779	4,395	344
2009/10	nr	344	6,850	2	7,196	1,632	35,700	5,060	504
2010/11	nr	504	7,150	0	7,654	1,758	37,264	5,305	591
2011/12	nr	591	6,950	2	7,543	1,688	36,230	5,395	460
2012/13	nr	460	6,990	4	7,454	1,410	36,432	5,528	516
2013/14	nr	516	7,330	0	7,846	1,326	38,195	5,955	565
2014/15	nr	565	7,740	11	8,316	1,650	40,339	6,220	446
2015/16	nr	446	7,675	75	8,196	1,250	40,020	6,440	506
2016/17	nr	506	8,100	60	8,666	1,325	42,275	6,700	641
2017/18	nr	641	8,060	60	8,761	1,475	42,000	6,755	531

Data based on Brazil's local February/January Marketing Year (MY).  
Where February 2012 - January 2013 is the 2011/12 MY.

**Table 23: Argentina Soybeans and Products Supply and Distribution Local Marketing Years**

Thousand Metric Tons

	Area Harvested	Beginning Stocks	Production	Imports	Total Supply	Exports	Crush	Domestic Consumption	Ending Stocks
<b>Oilseed, Soybean (Local)</b>									
2004/05	14,400	2,532	39,000	709	42,241	10,686	29,560	31,000	555
2005/06	15,200	555	40,500	1,013	42,068	7,132	32,748	34,268	668
2006/07	16,300	668	48,800	2,336	51,804	12,133	35,963	37,593	2,078
2007/08	16,371	2,078	46,200	2,947	51,225	11,803	31,883	33,608	5,814
2008/09	16,000	5,814	32,000	157	37,971	3,486	28,555	30,405	4,080
2009/10	18,600	4,080	54,500	0	58,580	13,701	39,196	41,196	3,683
2010/11	18,300	3,683	49,000	13	52,696	10,389	37,521	39,821	2,486
2011/12	17,577	2,486	40,100	2	42,588	6,098	30,681	33,431	3,059
2012/13	19,750	3,059	49,300	2	52,361	7,817	35,009	38,209	6,335
2013/14	19,250	6,335	53,400	2	59,737	7,434	38,503	42,089	10,214
2014/15	19,340	10,214	61,400	141	71,755	11,670	45,110	49,285	10,800
2015/16	19,530	10,800	56,800	1,304	68,904	9,046	43,041	47,491	12,367
2016/17	18,350	12,367	57,800	1,900	72,067	7,400	42,000	46,600	18,067
2017/18	18,500	18,067	54,000	1,700	73,767	8,500	44,500	49,300	15,967
<b>Meal, Soybean (Local)</b>									
2004/05	nr	1,085	23,350	1	24,436	22,703	29,560	530	1,203
2005/06	nr	1,203	25,582	0	26,785	24,723	32,748	535	1,527
2006/07	nr	1,527	27,857	2	29,386	28,108	35,963	544	734
2007/08	nr	734	24,839	3	25,576	24,389	31,883	652	535
2008/09	nr	535	22,519	4	23,058	21,303	28,555	750	1,005
2009/10	nr	1,005	30,493	0	31,498	28,384	39,196	850	2,264
2010/11	nr	2,264	29,181	0	31,445	27,485	37,521	1,085	2,875
2011/12	nr	2,875	23,946	0	26,821	21,973	30,681	1,550	3,298
2012/13	nr	3,298	27,150	0	30,448	23,937	35,009	1,950	4,561
2013/14	nr	4,561	29,528	0	34,089	27,473	38,503	2,200	4,416
2014/15	nr	4,416	34,737	1	39,154	31,867	45,110	2,500	4,787
2015/16	nr	4,787	33,102	0	37,889	30,980	43,041	2,694	4,215
2016/17	nr	4,215	32,100	0	36,315	30,550	42,000	2,865	2,900
2017/18	nr	2,900	34,150	0	37,050	31,250	44,500	3,075	2,725
<b>Oil, Soybean (Local)</b>									
2004/05	nr	304	5,558	0	5,862	5,082	29,560	395	385
2005/06	nr	385	6,169	0	6,554	5,667	32,748	402	485
2006/07	nr	485	6,917	0	7,402	6,515	35,963	675	212
2007/08	nr	212	6,037	0	6,249	4,987	31,883	1,125	137
2008/09	nr	137	5,448	0	5,585	3,709	28,555	1,716	160
2009/10	nr	160	7,460	0	7,620	5,180	39,196	2,215	225
2010/11	nr	225	7,148	0	7,373	4,227	37,521	2,755	391
2011/12	nr	391	5,840	35	6,266	3,433	30,681	2,550	283
2012/13	nr	283	6,616	59	6,958	4,281	35,009	2,375	302
2013/14	nr	302	7,191	26	7,519	4,296	38,503	2,843	380
2014/15	nr	380	8,753	5	9,138	6,312	45,110	2,300	526
2015/16	nr	526	8,382	0	8,908	5,386	43,041	3,037	485
2016/17	nr	485	8,100	0	8,585	5,225	42,000	3,020	340
2017/18	nr	340	8,565	0	8,905	5,600	44,500	3,030	275

Data based on Argentina's Local April/March Marketing Year (MY).  
Where April 2012 - March 2013 is the 2011/12 MY.

**Table 24: South East Asia Oilseeds and Products Supply and Distribution**

Thousand Metric Tons

	2013/14	2014/15	2015/16	2016/17	Jan 2017/18	Feb 2017/18
<b>Production</b>						
Oilseed, Copra	4,187	4,175	4,054	4,150	4,243	4,243
Oilseed, Palm Kernel	13,851	14,403	13,705	15,058	16,250	16,250
Oilseed, Soybean	1,040	995	947	940	921	921
Other	3,808	3,811	3,705	3,696	3,714	3,714
<b>Total</b>	<b>22,886</b>	<b>23,384</b>	<b>22,411</b>	<b>23,844</b>	<b>25,128</b>	<b>25,128</b>
<b>Domestic Consumption</b>						
Meal, Fish	853	848	796	908	863	870
Meal, Rapeseed	801	745	407	358	405	415
Meal, Soybean	16,055	16,996	18,235	18,689	19,547	19,479
Other	2,574	2,985	3,080	3,339	3,358	3,398
<b>Total</b>	<b>20,283</b>	<b>21,574</b>	<b>22,518</b>	<b>23,294</b>	<b>24,173</b>	<b>24,162</b>
<b>SME</b>						
Meal, Fish	1,237	1,230	1,154	1,317	1,247	1,262
Meal, Rapeseed	570	530	290	255	288	295
Meal, Soybean	16,005	16,946	18,165	18,599	19,437	19,369
Other	1,394	1,550	1,599	1,697	1,707	1,724
<b>Total</b>	<b>19,206</b>	<b>20,256</b>	<b>21,208</b>	<b>21,867</b>	<b>22,679</b>	<b>22,650</b>
<b>Imports</b>						
Meal, Fish	241	237	279	308	321	326
Meal, Rapeseed	738	658	369	343	400	400
Meal, Soybean	13,743	14,914	15,660	15,538	16,654	16,606
Other	391	563	684	677	645	655
<b>Total</b>	<b>15,113</b>	<b>16,372</b>	<b>16,992</b>	<b>16,866</b>	<b>18,020</b>	<b>17,987</b>
<b>Industrial Dom. Cons.</b>						
Oil, Palm	7,012	5,518	6,826	6,814	7,550	7,590
Oil, Rapeseed	0	0	0	0	0	0
Oil, Soybean	36	39	42	46	45	45
Oil, Sunflowerseed	0	0	0	0	0	0
Other	3,832	4,014	3,988	4,222	4,430	4,444
<b>Total</b>	<b>10,880</b>	<b>9,571</b>	<b>10,856</b>	<b>11,082</b>	<b>12,025</b>	<b>12,079</b>
<b>Food Use Dom. Cons.</b>						
Oil, Palm	8,360	9,053	9,241	9,670	9,825	9,935
Oil, Rapeseed	61	54	26	32	17	26
Oil, Soybean	516	574	681	719	782	785
Oil, Sunflowerseed	112	131	131	131	131	131
Other	1,437	1,384	1,430	1,553	1,575	1,554
<b>Total</b>	<b>10,486</b>	<b>11,196</b>	<b>11,509</b>	<b>12,105</b>	<b>12,330</b>	<b>12,431</b>
<b>Domestic Consumption</b>						
Oil, Palm	15,684	14,984	16,473	16,898	17,862	18,009
Oil, Rapeseed	61	54	26	32	17	26
Oil, Soybean	552	613	723	765	827	830
Oil, Sunflowerseed	112	131	131	131	131	131
Other	5,279	5,408	5,428	5,785	6,015	6,008
<b>Total</b>	<b>21,688</b>	<b>21,190</b>	<b>22,781</b>	<b>23,611</b>	<b>24,852</b>	<b>25,004</b>
<b>Imports</b>						
Oil, Palm	2,920	3,762	3,600	3,585	3,715	3,815
Oil, Rapeseed	10	13	13	13	13	13
Oil, Soybean	292	321	287	302	290	285
Oil, Sunflowerseed	0	0	0	0	0	0
Other	509	671	544	485	523	507
<b>Total</b>	<b>3,731</b>	<b>4,767</b>	<b>4,444</b>	<b>4,385</b>	<b>4,541</b>	<b>4,620</b>

Southeast Asia includes Brunei, Burma, Cambodia, Indonesia, Laos, Malaysia, Philippines, Singapore, Thailand, and Vietnam.

SME - 44 Percent Protein Soybean Meal Equivalent

**Table 25: Middle East Oilseeds and Products Supply and Distribution**

Thousand Metric Tons

	2013/14	2014/15	2015/16	2016/17	Jan 2017/18	Feb 2017/18
<b>Production</b>						
Oilseed, Cottonseed	1,106	1,243	1,032	1,228	1,555	1,555
Oilseed, Rapeseed	430	425	400	400	400	400
Oilseed, Soybean	318	327	297	297	282	282
Oilseed, Sunflowerseed	1,502	1,306	1,206	1,426	1,706	1,706
Other	140	120	150	145	145	145
<b>Total</b>	<b>3,496</b>	<b>3,421</b>	<b>3,085</b>	<b>3,496</b>	<b>4,088</b>	<b>4,088</b>
<b>Domestic Consumption</b>						
Meal, Fish	86	86	110	125	125	125
Meal, Rapeseed	921	969	951	945	875	906
Meal, Soybean	6,785	7,075	7,522	7,885	8,310	8,310
Other	3,034	2,961	2,970	3,238	3,533	3,533
<b>Total</b>	<b>10,826</b>	<b>11,091</b>	<b>11,553</b>	<b>12,193</b>	<b>12,843</b>	<b>12,874</b>
<b>SME</b>						
Meal, Fish	125	125	160	181	181	181
Meal, Rapeseed	655	689	677	672	623	645
Meal, Soybean	6,783	7,073	7,520	7,883	8,310	8,310
Other	2,036	1,996	1,963	2,194	2,418	2,418
<b>Total</b>	<b>9,599</b>	<b>9,883</b>	<b>10,319</b>	<b>10,931</b>	<b>11,531</b>	<b>11,554</b>
<b>Imports</b>						
Meal, Fish	82	80	108	125	120	120
Meal, Rapeseed	321	217	196	190	179	176
Meal, Soybean	5,279	4,334	4,103	4,583	4,850	4,850
Other	1,407	1,406	1,544	1,617	1,540	1,540
<b>Total</b>	<b>7,089</b>	<b>6,037</b>	<b>5,951</b>	<b>6,515</b>	<b>6,689</b>	<b>6,686</b>
<b>Imports</b>						
Oil, Palm	2,362	2,127	2,310	2,541	2,572	2,572
Oil, Rapeseed	46	47	61	60	79	64
Oil, Soybean	641	498	404	366	433	433
Oil, Sunflowerseed	1,916	1,760	1,661	2,274	2,039	2,039
Other	174	452	158	172	181	181
<b>Total</b>	<b>5,139</b>	<b>4,884</b>	<b>4,594</b>	<b>5,413</b>	<b>5,304</b>	<b>5,289</b>
<b>Industrial Dom. Cons.</b>						
Oil, Palm	180	185	185	185	190	190
Oil, Rapeseed	35	35	30	30	30	30
Oil, Soybean	81	137	126	125	114	114
Oil, Sunflowerseed	30	20	20	20	20	20
Other	52	69	58	70	68	68
<b>Total</b>	<b>378</b>	<b>446</b>	<b>419</b>	<b>430</b>	<b>422</b>	<b>422</b>
<b>Food Use Dom. Cons.</b>						
Oil, Palm	1,793	1,507	1,815	1,961	2,086	2,086
Oil, Rapeseed	315	392	389	325	321	308
Oil, Soybean	838	916	972	968	1,008	1,008
Oil, Sunflowerseed	1,835	1,971	2,104	2,373	2,442	2,442
Other	628	845	629	628	685	685
<b>Total</b>	<b>5,409</b>	<b>5,631</b>	<b>5,909</b>	<b>6,255</b>	<b>6,542</b>	<b>6,529</b>
<b>Domestic Consumption</b>						
Oil, Palm	1,973	1,692	2,000	2,146	2,276	2,276
Oil, Rapeseed	350	427	419	355	351	338
Oil, Soybean	974	1,131	1,178	1,148	1,172	1,172
Oil, Sunflowerseed	1,885	2,001	2,134	2,403	2,472	2,472
Other	687	921	693	708	763	763
<b>Total</b>	<b>5,869</b>	<b>6,172</b>	<b>6,424</b>	<b>6,760</b>	<b>7,034</b>	<b>7,021</b>

Middle East includes Bahrain, Gaza Strip, Iran, Iraq, Israel, Jordan, Kuwait, Lebanon, Oman, Qatar, Saudi Arabia, Syria, Turkey, United Arab Emirates, West Banks, and Yemen.

SME - 44 Percent Protein Soybean Meal Equivalent



**Table 26: European Union Oilseeds and Products Supply and Distribution**

Thousand Metric Tons

	2013/14	2014/15	2015/16	2016/17	Jan 2017/18	Feb 2017/18
<b>Production</b>						
Oilseed, Rapeseed	21,306	24,587	21,997	20,543	22,100	22,100
Oilseed, Soybean	1,211	1,832	2,320	2,379	2,500	2,500
Oilseed, Sunflowerseed	9,054	8,974	7,721	8,573	9,300	9,300
Other	479	520	405	416	485	485
<b>Total</b>	<b>32,050</b>	<b>35,913</b>	<b>32,443</b>	<b>31,911</b>	<b>34,385</b>	<b>34,385</b>
<b>Domestic Consumption</b>						
Meal, Fish	597	529	581	540	620	620
Meal, Rapeseed	13,700	14,300	13,800	13,850	14,000	14,000
Meal, Soybean	28,142	30,242	30,842	30,242	30,342	30,342
Other	9,532	9,369	9,281	9,952	10,099	10,099
<b>Total</b>	<b>51,971</b>	<b>54,440</b>	<b>54,504</b>	<b>54,584</b>	<b>55,061</b>	<b>55,061</b>
<b>SME</b>						
Meal, Fish	866	767	842	783	896	899
Meal, Rapeseed	9,748	10,174	9,819	9,854	9,961	9,961
Meal, Soybean	28,100	30,200	30,800	30,200	30,300	30,300
Other	5,501	5,394	5,309	5,814	5,919	5,919
<b>Total</b>	<b>44,214</b>	<b>46,536</b>	<b>46,770</b>	<b>46,651</b>	<b>47,076</b>	<b>47,079</b>
<b>Imports</b>						
Meal, Fish	372	279	284	215	300	300
Meal, Rapeseed	457	453	409	219	300	300
Meal, Soybean	18,137	19,623	19,207	18,862	19,200	19,200
Other	5,656	5,469	5,502	5,710	5,705	5,705
<b>Total</b>	<b>24,622</b>	<b>25,824</b>	<b>25,402</b>	<b>25,006</b>	<b>25,505</b>	<b>25,505</b>
<b>Industrial Dom. Cons.</b>						
Oil, Palm	3,100	3,400	3,400	3,400	3,350	3,350
Oil, Rapeseed	6,865	7,095	7,200	7,100	7,050	7,050
Oil, Soybean	940	990	930	850	800	800
Oil, Sunflowerseed	310	310	420	400	400	400
Other	480	515	475	465	465	465
<b>Total</b>	<b>11,695</b>	<b>12,310</b>	<b>12,425</b>	<b>12,215</b>	<b>12,065</b>	<b>12,065</b>
<b>Food Use Dom. Cons.</b>						
Oil, Palm	3,250	3,320	3,100	2,900	2,800	2,800
Oil, Rapeseed	2,900	3,250	2,800	3,000	3,200	3,200
Oil, Soybean	1,000	1,000	1,300	1,300	1,300	1,300
Oil, Sunflowerseed	3,400	3,350	3,800	4,150	4,250	4,250
Other	2,571	2,317	2,358	2,134	2,087	2,087
<b>Total</b>	<b>13,121</b>	<b>13,237</b>	<b>13,358</b>	<b>13,484</b>	<b>13,637</b>	<b>13,637</b>
<b>Domestic Consumption</b>						
Oil, Palm	6,600	6,920	6,700	6,500	6,350	6,350
Oil, Rapeseed	9,815	10,395	10,050	10,150	10,300	10,300
Oil, Soybean	1,990	2,040	2,285	2,205	2,155	2,155
Oil, Sunflowerseed	3,720	3,670	4,230	4,560	4,660	4,660
Other	3,076	2,854	2,848	2,614	2,567	2,567
<b>Total</b>	<b>25,201</b>	<b>25,879</b>	<b>26,113</b>	<b>26,029</b>	<b>26,032</b>	<b>26,032</b>
<b>Imports</b>						
Oil, Palm	6,969	6,935	6,636	6,700	6,500	6,500
Oil, Rapeseed	303	261	207	153	150	150
Oil, Soybean	329	253	325	285	250	250
Oil, Sunflowerseed	1,039	829	1,418	1,823	1,500	1,500
Other	1,341	1,603	1,378	1,329	1,351	1,351
<b>Total</b>	<b>9,981</b>	<b>9,881</b>	<b>9,964</b>	<b>10,290</b>	<b>9,751</b>	<b>9,751</b>

European Union includes Austria, Belgium, Bulgaria, Croatia, Cyprus, Czech Republic, Denmark, Estonia, Finland, France, Germany, Greece, Hungary, Ireland, Italy, Latvia, Lithuania, Luxembourg, Malta, Netherlands, Poland, Portugal, Romania, Slovakia, Slovenia, Spain, Sweden, and United Kingdom.

**Table 27: China Oilseeds and Products Supply and Distribution**

Thousand Metric Tons

	2013/14	2014/15	2015/16	2016/17	Jan 2017/18	Feb 2017/18
<b>Production</b>						
Oilseed, Peanut	16,972	16,482	16,440	17,290	17,500	17,500
Oilseed, Rapeseed	14,458	14,772	14,931	14,546	13,100	13,100
Oilseed, Soybean	11,951	12,154	11,785	12,900	14,200	14,200
Oilseed, Sunflowerseed	2,424	2,492	2,698	2,800	2,850	2,850
Other	12,835	11,757	8,600	8,800	10,300	10,800
<b>Total</b>	<b>58,640</b>	<b>57,657</b>	<b>54,454</b>	<b>56,336</b>	<b>57,950</b>	<b>58,450</b>
<b>Domestic Consumption</b>						
Meal, Fish	1,599	1,474	1,439	2,019	1,435	1,435
Meal, Rapeseed	11,287	11,032	11,314	11,634	11,121	11,299
Meal, Soybean	52,534	57,467	62,663	68,646	73,870	73,870
Other	9,360	8,761	7,912	8,410	8,913	9,128
<b>Total</b>	<b>74,780</b>	<b>78,734</b>	<b>83,328</b>	<b>90,709</b>	<b>95,339</b>	<b>95,732</b>
<b>SME</b>						
Meal, Fish	2,319	2,137	2,087	2,928	2,074	2,081
Meal, Rapeseed	7,718	7,529	7,730	7,957	7,592	7,719
Meal, Soybean	51,574	56,487	61,663	67,596	72,770	72,770
Other	8,127	7,648	7,073	7,475	7,948	8,122
<b>Total</b>	<b>69,737</b>	<b>73,801</b>	<b>78,553</b>	<b>85,956</b>	<b>90,384</b>	<b>90,692</b>
<b>Imports</b>						
Meal, Fish	1,041	1,031	1,042	1,583	1,000	1,000
Meal, Rapeseed	314	142	359	875	900	900
Meal, Soybean	20	58	24	61	30	30
Other	747	553	403	657	511	511
<b>Total</b>	<b>2,122</b>	<b>1,784</b>	<b>1,828</b>	<b>3,176</b>	<b>2,441</b>	<b>2,441</b>
<b>Food Use Dom. Cons.</b>						
Oil, Palm	3,600	3,750	2,700	2,670	2,600	2,600
Oil, Peanut	2,851	2,819	2,919	2,999	3,085	3,085
Oil, Rapeseed	7,400	7,750	8,550	8,700	8,100	8,100
Oil, Soybean	13,650	14,200	15,350	16,350	17,400	17,400
Oil, Sunflowerseed	1,010	998	1,379	1,279	1,392	1,392
Other	1,662	1,563	1,272	1,297	1,463	1,535
<b>Total</b>	<b>30,173</b>	<b>31,080</b>	<b>32,170</b>	<b>33,295</b>	<b>34,040</b>	<b>34,112</b>
<b>Domestic Consumption</b>						
Oil, Palm	5,700	5,700	4,800	4,820	4,800	4,800
Oil, Peanut	2,851	2,819	2,919	2,999	3,085	3,085
Oil, Rapeseed	7,400	7,750	8,550	8,700	8,100	8,100
Oil, Soybean	13,650	14,200	15,350	16,350	17,400	17,400
Oil, Sunflowerseed	1,010	998	1,379	1,279	1,392	1,392
Other	2,157	2,141	1,832	1,892	2,013	2,135
<b>Total</b>	<b>32,768</b>	<b>33,608</b>	<b>34,830</b>	<b>36,040</b>	<b>36,790</b>	<b>36,912</b>
<b>Imports</b>						
Oil, Palm	5,573	5,696	4,689	4,881	4,800	4,800
Oil, Peanut	74	141	113	111	130	130
Oil, Rapeseed	902	732	768	802	750	750
Oil, Soybean	1,353	773	586	711	500	500
Oil, Sunflowerseed	531	534	878	725	800	800
Other	671	751	737	774	725	775
<b>Total</b>	<b>9,104</b>	<b>8,627</b>	<b>7,771</b>	<b>8,004</b>	<b>7,705</b>	<b>7,755</b>

SME - 44 Percent Protein Soybean Meal Equivalent

**Table 28: India Oilseeds and Products Supply and Distribution**

Thousand Metric Tons

	2013/14	2014/15	2015/16	2016/17	Jan 2017/18	Feb 2017/18
<b>Production</b>						
Oilseed, Cottonseed	12,950	12,525	10,996	11,463	12,439	12,100
Oilseed, Peanut	6,482	4,855	4,470	6,700	6,500	6,500
Oilseed, Rapeseed	6,650	5,080	5,920	7,091	6,500	6,500
Oilseed, Soybean	9,477	8,711	6,929	11,500	10,000	9,500
Oilseed, Sunflowerseed	580	383	320	275	320	277
Other	725	730	735	735	770	770
<b>Total</b>	<b>36,864</b>	<b>32,284</b>	<b>29,370</b>	<b>37,764</b>	<b>36,529</b>	<b>35,647</b>
<b>Domestic Consumption</b>						
Meal, Cottonseed	4,230	4,264	3,962	3,738	4,215	4,140
Meal, Peanut	1,630	1,242	1,108	1,566	1,507	1,507
Meal, Rapeseed	2,115	1,600	2,600	2,897	3,185	3,235
Meal, Soybean	3,640	4,500	4,630	5,007	5,450	5,450
Meal, Sunflowerseed	271	184	315	419	375	375
Other	304	376	435	455	410	410
<b>Total</b>	<b>12,190</b>	<b>12,166</b>	<b>13,050</b>	<b>14,082</b>	<b>15,142</b>	<b>15,117</b>
<b>SME</b>						
Meal, Cottonseed	3,428	3,455	3,210	3,029	3,415	3,355
Meal, Peanut	1,827	1,390	1,240	1,755	1,688	1,688
Meal, Rapeseed	1,505	1,138	1,850	2,061	2,266	2,302
Meal, Soybean	3,500	4,350	4,470	4,750	5,100	5,100
Meal, Sunflowerseed	181	123	210	279	250	250
Other	132	164	190	197	178	178
<b>Total</b>	<b>10,571</b>	<b>10,621</b>	<b>11,170</b>	<b>12,072</b>	<b>12,898</b>	<b>12,873</b>
<b>Food Use Dom. Cons.</b>						
Oil, Cottonseed	1,250	1,250	1,230	1,120	1,245	1,220
Oil, Palm	8,052	8,750	8,600	9,100	9,700	10,000
Oil, Peanut	1,237	1,040	864	1,150	1,235	1,235
Oil, Rapeseed	2,300	2,000	2,200	2,432	2,475	2,475
Oil, Soybean	3,300	4,100	5,300	5,400	5,400	5,200
Oil, Sunflowerseed	1,500	1,700	1,665	2,100	2,100	2,100
Other	345	380	265	230	241	241
<b>Total</b>	<b>17,984</b>	<b>19,220</b>	<b>20,124</b>	<b>21,532</b>	<b>22,396</b>	<b>22,471</b>
<b>Domestic Consumption</b>						
Oil, Cottonseed	1,295	1,295	1,275	1,165	1,290	1,265
Oil, Palm	8,302	9,150	9,100	9,650	10,300	10,600
Oil, Peanut	1,247	1,050	874	1,160	1,245	1,245
Oil, Rapeseed	2,370	2,080	2,280	2,517	2,555	2,555
Oil, Soybean	3,300	4,100	5,300	5,400	5,400	5,200
Oil, Sunflowerseed	1,500	1,700	1,665	2,100	2,100	2,100
Other	643	672	553	496	526	546
<b>Total</b>	<b>18,657</b>	<b>20,047</b>	<b>21,047</b>	<b>22,488</b>	<b>23,416</b>	<b>23,511</b>
<b>Imports</b>						
Oil, Cottonseed	0	0	0	0	0	0
Oil, Palm	7,820	9,139	8,860	9,341	10,200	10,600
Oil, Peanut	0	0	0	0	0	0
Oil, Rapeseed	155	383	383	317	430	430
Oil, Soybean	1,804	2,815	4,269	3,534	3,800	3,645
Oil, Sunflowerseed	1,516	1,575	1,492	2,151	1,850	1,850
Other	202	224	106	82	90	110
<b>Total</b>	<b>11,497</b>	<b>14,136</b>	<b>15,110</b>	<b>15,425</b>	<b>16,370</b>	<b>16,635</b>

SME - 44 Percent Protein Soybean Meal Equivalent

**Table 29: Oilseed Prices**  
**U.S. Dollars per Metric Ton**

Year Beg Oct 1	Soybean					Peanut		Sunseed		Rapeseed	Copra
	U.S. 1/	U.S. 2/	Brz 3/	Arg 4/	Rott 5/	U.S. 6/	Rott 7/	U.S. 8/	Rott 9/	Hamb 10/	Rott 11/
<b>Oct - Sep Average</b>											
06/07-15/16	404	415	442	442	478	513	1475	486	513	500	760
2006/07	254	264	279	279	335	394	1,128	343	401	375	537
2007/08	414	452	472	469	550	458	1,688	532	745	644	867
2008/09	368	365	403	392	421	517	1,204	461	364	393	487
2009/10	354	357	390	395	429	467	1,209	342	452	419	613
2010/11	454	482	508	511	549	508	1,792	591	661	647	1188
2011/12	488	505	549	533	562	729	2,480	632	593	616	829
2012/13	530	537	538	543	592	635	1,391	546	580	579	570
2013/14	482	487	514	517	542	524	1,300	480	466	505	854
2014/15	362	356	388	401	407	482	1,294	506	432	417	749
2015/16	339	346	382	375	396	419	1,260	433	440	409	907
<b>2016/17</b>											
Oct	342	348	413	386	403	421	1,550	375	413	431	964
Nov	348	358	395	386	412	410	1,600	362	423	431	1,021
Dec	354	367	396	388	420	408	1,600	379	420	439	1,127
Jan	357	371	402	392	425	430	1,650	379	416	446	1225
Feb	362	369	401	397	427	437	1,650	388	415	448	1146
Mar	356	354	381	374	404	448	1,650	384	410	440	1016
Apr	342	336	358	352	389	437	1,650	395	400	431	1044
May	340	340	367	360	388	428	1,650	381	403	432	1113
Jun	334	330	360	355	380	434	1,450	388	396	404	1119
Jul	346	356	388	378	408	452	1,450	395	399	417	1059
Aug	340	337	378	368	390	437	1,405	421	397	427	1062
Sep	344	343	384	378	397	507	1,344	384	399	433	1015
<b>Average</b>	347	351	385	376	404	437	1,554	386	408	432	1,076
<b>2017/18</b>											
Oct	337	343	386	378	399	522	1,275	370	390	430	989
Nov	339	346	386	371	401	511	1,250	366	393	438	1,038
Dec	342	345	384	368	399	531	1,231	375	395	425	958
*Jan	N/A	345	384	365	405	N/A	1,225	N/A	398	426	943
Feb											
Mar											
Apr											
May											
Jun											
Jul											
Aug											
Sep											
<b>Average</b>	N/A	345	385	371	401	N/A	1,245	N/A	394	430	982

1/ U.S. Farm Price; USDA. 2/ U.S. NO.1 Yellow Cash Central Illinois; AMS.

3/ Brazil Paranagua, FOB; IGC 4/ Argentina Up River, FOB; IGC

5/ Rotterdam CIF; US origin; Oil World. 6/ US Farm Price, Inshell, USDA.

7/ Rotterdam CIF; US Runners 40/50%, Shelled Basis, Oilworld. 8/ US Farm Price; USDA

9/ Rotterdam/Amsterdam CIF; EU; Oil World 10/Hamburg CIF; Europe "00"; Oil World.

11/ Phil/Indo CIF NW Europe; Oil World

\* Preliminary

Sept/Oct/Nov Shipment

2/8/2018 8:30:59 AM

**Table 30: Protein Meal Prices**  
**U.S. Dollars per Metric Ton**

Year Beg Oct 1	Soybean				Cottonseed	Sunseed		Fish	Rapeseed
	U.S. 1/	Brz 2/	Arg 3/	Hamb 4/	U.S. 5/	U.S. 6/	Ukr 7/	Brem 8/	Hamb 9/
<b>Oct - Sep Average</b>									
06/07-15/16	394	372	366	424	298	208	253	1479	265
2006/07	226	199	181	276	166	116	178	1220	184
2007/08	370	337	299	469	280	191	298	1146	298
2008/09	365	333	290	401	281	168	178	1103	195
2009/10	343	327	311	391	244	167	222	1668	221
2010/11	381	383	386	418	302	242	254	1607	278
2011/12	434	442	442	461	303	272	263	1,448	295
2012/13	516	489	506	538	366	266	318	1,791	353
2013/14	540	500	509	533	416	263	315	1,660	323
2014/15	406	376	386	403	335	231	269	1,632	269
2015/16	358	335	349	351	288	169	233	1,517	232
<b>2016/17</b>									
Oct	356	335	334	340	267	164	194	1,497	213
Nov	355	328	338	343	244	155	193	1,463	217
Dec	354	321	329	345	240	160	184	1,423	210
Jan	366	342	354	355	246	175	174	1,386	216
Feb	369	342	355	357	245	178	177	1,353	239
Mar	353	323	336	346	232	171	175	1,304	238
Apr	337	307	314	331	215	163	169	1,296	239
May	339	312	315	329	198	159	173	1,331	238
Jun	331	300	303	313	198	154	173	1,333	238
Jul	359	324	320	326	221	144	174	1,354	221
Aug	332	306	306	318	219	148	177	1,380	217
Sep	339	318	312	329	236	148	174	1,402	211
<b>Average</b>	349	322	326	336	230	160	178	1,377	225
<b>2017/18</b>									
Oct	347	326	320	337	252	169	169	1,378	208
Nov	346	322	323	333	252	182	163	1,388	204
Dec	352	333	340	348	256	204	172	1,480	216
*Jan	356	343	352	361	285	196	176	1,572	241
Feb									
Mar									
Apr									
May									
Jun									
Jul									
Aug									
Sep									
<b>Average</b>	350	331	334	345	261	188	170	1,455	217

1/ Decatur, Average Wholesale 48% Protein; USDA. 2/ Brazil Paranagua, FOB; 48% Protein; IGC.

3/ Argentina Pellets, Up River, FOB; IGC; 4/ Hamburg FOB 44/45% Ex-Mill; Oil World.

5/ Memphis FOB; 41% Protein Solvent Extraction; USDA; 6/ Minneapolis FOB; 32% Protein; USDA.

7/ HiPro a.o. cif France or Ukraine DAF; Argentina Pellet 37-38% (Prior to Aug 2012); Oilworld.

8/ Bremen 64-65% Protein; Oil World. 9/ Hamburg FOB; Ex-Mill 34% Protein; Oil World.

\* Preliminary

2/8/2018 8:30:59 AM

**Table 31: Vegetable Oil Prices**  
**U.S. Dollars per Metric Ton**

Year Begin Oct 1	Soybean				Cottonseed	Sunseed		Peanut		Palm Malay	Canola	Coconut	Corn
	U.S. 1/	Brz 2/	Arg 3/	Rott 4/	U.S. 5/	U.S. 6/	Rott 7/	U.S. 8/	Rott 9/	10/	Rott 11/	Rott 12/	U.S. 13/
<b>Oct - Sep Average</b>													
06/07-15/16	889	911	909	1,000	1,092	1,479	1,075	1,635	1,619	817	1,034	1,142	998
2006/07	684	673	667	771	787	1,279	846	1,253	1,219	655	852	812	701
2007/08	1,147	1,190	1,191	1,327	1,622	2,010	1,639	2,225	2,018	1,058	1,410	1,306	1,529
2008/09	709	740	741	826	820	1,108	837	1,539	1,339	633	868	735	722
2009/10	793	848	829	924	888	1,164	956	1,353	1,291	793	927	921	866
2010/11	1,173	1,210	1,211	1,306	1,202	1,899	1,404	1,806	1,751	1,154	1,367	1,772	1,331
2011/12	1,144	1,162	1,164	1,241	1,173	1,834	1,254	2,247	2,455	1,032	1,258	1,244	1,236
2012/13	1,039	1,012	1,014	1,098	1,071	1,452	1,189	1,934	1,963	791	1,127	858	1,029
2013/14	843	871	870	950	1,337	1,304	929	1,430	1,355	803	954	1,278	869
2014/15	697	706	705	778	1,009	1,471	850	1,265	1,354	626	782	1,128	827
2015/16	658	704	698	774	1,011	1,275	849	1,294	1,443	628	798	1,362	865
<b>2016/17</b>													
Oct	746	797	782	858	989	1,235	830	1,430	1,575	677	896	1,463	799
Nov	761	803	796	880	1,010	1,235	830	1,455	1,525	708	899	1,538	812
Dec	784	826	841	907	1,023	1,235	844	1,391	1,504	745	918	1,699	840
Jan	740	798	812	872	982	1,235	817	1,386	1,520	759	917	1,815	835
Feb	705	761	762	835	915	1,213	808	1,392	1,545	740	878	1,703	840
Mar	680	734	712	812	870	1,146	783	1,451	1,578	713	850	1,549	836
Apr	652	704	699	791	828	1,124	784	1,536	1,558	681	824	1,580	830
May	675	734	734	827	852	1,113	797	1,560	1,550	698	844	1,687	831
Jun	678	739	741	827	851	1,120	780	1,680	1,518	670	813	1,697	838
Jul	724	747	744	835	857	1,130	793	1,670	1,498	658	843	1,591	827
Aug	731	760	758	855	802	1,163	806	1,535	1,478	651	875	1,604	810
Sep	734	779	779	882	848	1,217	810	1,468	1,433	690	889	1,525	804
<b>Average</b>	<b>718</b>	<b>765</b>	<b>763</b>	<b>848</b>	<b>902</b>	<b>1,181</b>	<b>807</b>	<b>1,496</b>	<b>1,524</b>	<b>699</b>	<b>871</b>	<b>1,621</b>	<b>825</b>
<b>2017/18</b>													
Oct	713	770	775	867	817	1,235	788	1,443	1,410	681	889	1,485	771
Nov	737	781	786	881	816	1,224	795	1,433	1,368	670	930	1,549	760
Dec	711	753	758	866	755	1,208	787	1,437	1,356	619	879	1,456	749
*Jan	697	759	766	864	722	1,224	784	1,458	1,335	650	848	1,399	676
Feb													
Mar													
Apr													
May													
Jun													
Jul													
Aug													
Sep													
<b>Average</b>	<b>715</b>	<b>766</b>	<b>771</b>	<b>870</b>	<b>778</b>	<b>1,223</b>	<b>789</b>	<b>1,443</b>	<b>1,367</b>	<b>655</b>	<b>887</b>	<b>1,472</b>	<b>739</b>

1/ Decatur; Average Wholesale Tank Crude; USDA. 2/ Brazil Paranagua, FOB Crude; IGC.  
3/ Argentina Up River, FOB Crude; IGC 4/ Dutch FOB; Ex-Mill; Oil World. 5/ PPSY Greenwood MS; USDA.  
6/ Minneapolis FOB; USDA. 7/ EU FOB NW Euro; Oil World. 8/ South East Mills FOB; Tank Cars Crude; USDA.  
9/ Rotterdam CIF; Any Origin; Oil World. 10/ Malaysia FOB; RBD; Oil World. 11/ Rotterdam, Dutch FOB  
Ex-Mill; Oilworld. 12/ Rotterdam CIF; Phil/Indo; Oil World. 13/ Chicago; Crude; AMS  
\* Preliminary

2/8/2018 8:30:59 AM