

THIS REPORT CONTAINS ASSESSMENTS OF COMMODITY AND TRADE ISSUES MADE BY USDA STAFF AND NOT NECESSARILY STATEMENTS OF OFFICIAL U.S. GOVERNMENT POLICY

Voluntary - Public

Date: 1/28/2010

GAIN Report Number: RS1006

Russian Federation

Post: Moscow

Russian Official Data on Grain Crop 2009

Report Categories:

Grain and Feed

Approved By:

Mary Ellen Smith

Prepared By:

Yelena Vassilieva

Report Highlights:

According to the Russian State Statistical Service (Rosstat), the 2009 grain crop was 97 million metric tons (MMT), 10 percent lower than in 2008, but still the second highest in the last 16 years. Grains were planted on larger area than last year, but bad weather affected yields of all major crops except rice. Wheat production is 61.7 MMT, a 3 percent decrease from the last year, while barley production dropped by 23 percent to 17.9 MMT. Still production exceeded domestic grain consumption by approximately 20 MMT. The Russian Ministry of Agriculture forecasted exports at 20 MMT. However, these exports will not be able to decrease high grain carry-over stocks, which might oppress domestic grain prices in spring 2010.

General Information:

Production in 2009

According to the Russian Federal State Statistical Service, in 2009 Russia produced 97.0 million metric tons (MMT) of grain, including 61.7 MMT of wheat, almost 17.9 MMT of barley, 5.4 MMT of oat, 4.3 MMT of rye, and 3.9 MMT of corn. Production of rice, millet, and buckwheat did not exceed 1.0 MMT each, although for the first time in more than 15 years Russia's production of rough rice reached 0.9 MMT. There was a decrease in the production of most crops except rice due to unfavorable weather, although these crops were planted on a larger area than last year. For the first time Rosstat separated triticale, an important feed grain, and estimated triticale crop at 0.5 MMT. Triticale production is concentrated in Tatarstan Republic; this crop is also produced in Stavropol kray and in Lipetsk oblast.

Table 1. Grain Area and Production, 2005-2009

[illegible]

Wheat, total	47,615	44,927	49,368	63,765	61,694	-3.2
Barley, total	15,684	18,037	15,559	23,148	17,873	-22.8
Rye (winter)	3,622	2,959	3,909	4,505	4,336	-3.8
Oats (spring)	4,545	4,860	5,384	5,835	5,399	-7.5
Corn for grain	3,060	3,510	3,798	6,682	3,945	-41.0
Rice	571	681	705	738	908	23.0
Millet	455	599	417	711	264	-62.9
Buckwheat	605	865	1,004	924	564	-39.0
Legumes	1,618	1,754	1,287	1,794	1,531	-14.7
Other	412	133	41	77	522	577.9
Total	78,187	78,325	81,472	108,179	97,036	-10.3

Source: SovEcon, Rosstat

Note: The harvested area data are calculated by the FAS Moscow based on the yield per harvested area and production data. In the PSD tables below the harvested area figures are rounded.

Trade

Russian Agricultural Ministry estimated domestic grain consumption in MY 2009 at 77 MMT, and Minister Yelena Skrynnik forecasted grain exports in MY 2009 at 20 MMT. In July – December 2009 Russian exported 11.5 MMT of grain, 9 percent less than in the same period a year ago. However, experts forecast that in the remaining 6 months exports will continue at almost the same pace and the total might amount 21 MMT by July 2010, compared with 23.2 MMT in MY 2008. However, this will be the second highest exports from Russia. Preliminary data on the Russian grain exports in July – December 2009 are in the Table 2 below.

Table 2. Russia: Grain and Wheat Flour Exports, July – December, Metric Tons

	Jul-Dec 06	Jul-Dec 07*	Jul-Dec 08	Jul-Dec 09
Total grain and flour	7,469,935	11,965,349	12,686,655	11,538,102
- Wheat And Meslin	6,558,197	10,520,975	10,645,745	9,636,692
- Barley	700,038	1,025,539	1,476,381	1,385,906
- Corn (Maize)	50,909	29,606	174,516	232,068
- Wheat flour (grain equivalent)	116,281	263,002	342,832	219,615
- Rice	11,446	3,702	14,830	57,000
- Rye In The Grain	3,215	106,139	10,709	3,092
- Other Cereals	27,097	14,773	20,465	3,006
- Oats	2,751	1,613	1,177	724

Source: State Customs Service, SovEcon data for December 2009

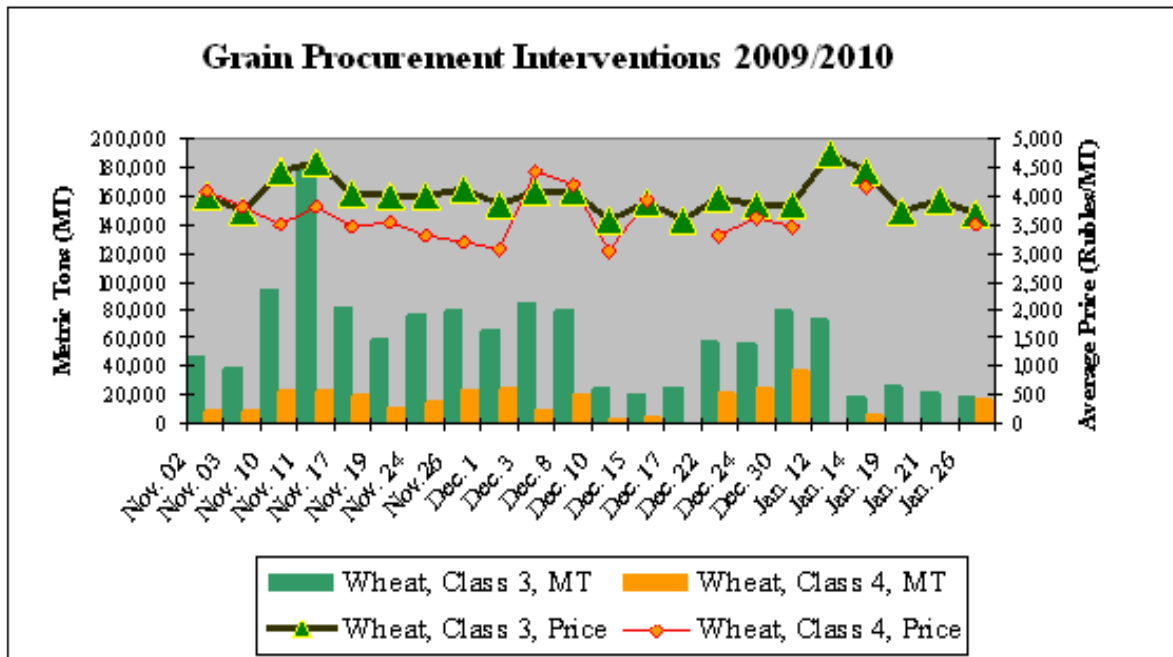
* In MY 2007 grain exports discontinued in February 2008 due to wheat and barley temporary export duties, and the total MY exports were 12.9 MMT.

Policy

Experts forecast that in spite of high exports grain carry over stocks will remain approximately 20 MMT by the end of marketing year. These stocks will oppress domestic grain prices in spring 2010. Since November 2009, the Russian government has purchased 1.7 MMT of grain for 6.6 billion rubles (\$220 million), including 1.3 MMT of Class 3 milling wheat, 0.3 MMT of Class 4 milling wheat, and 66,150 MT of food quality rye. However, these purchases were not able to support market prices.

Thus, according to analytical company ProZerno, Class 3 wheat price in European Russia In December – January stabilized at 4,075 Rubles (\$156) per metric tons, while intervention price of Class 3 wheat was 3,830 Rubles (\$128) per metric tons in the end of December, and 3,700 (\$123) Rubles in the middle of January 2010. Only at the interventions held January 12 and 14, 2010, farmers were able to sell 92,000 MT of this wheat for more than 4,400 Rubles (\$147) per metric ton. Therefore the Russian Ministry of Agriculture is considering other tools to support grain farmers, like export stimuli, including inter-government grain delivery agreements, and short-term loan guarantees for farmers when grain is used as collateral. However, the federal budget constraints limit these choices. In 2010 the Russian federal budget will finance primarily development of meat and dairy industries. These industries might increase demand for feeds, but will not be able to use the entire grain surplus.

Graph 1



Source: web-site www.micex.ru

Relevant GAIN Reports:

- Russian Food Security Doctrine Reemerged_Moscow_Russian Federation_12-22-2009
- Grain and Feed December Update_Moscow_Russian Federation_11-30-2009
- Grain and Feed November Update_Moscow_Russian Federation_10-29-2009
- Grain Interventions Begin in November_Moscow_Russian Federation_10-27-2009

Production, Supply and Demand Data Statistics :

Note: in all PSD tables area is in 1,000 hectares and grain volumes are in 1,000 metric tons.

Wheat

Wheat Russia	2007			2008			2009		
	2007/2008			2008/2009			2009/2010		
	Market Year Begin: Jul 2007			Market Year Begin: Jul 2008			Market Year Begin: Jul 2009		
	USDA Official Data		New Post	USDA Official Data		New Post	USDA Official Data		Jan
			Data			Data			Data
Area Harvested	24,400	24,500	24,500	26,650	26,000	26,050	28,750	27,000	26,600
Beginning Stocks	2,231	2,380	2,380	1,819	1,819	1,819	8,429	8,429	8,429
Production	49,400	49,400	49,400	63,700	63,745	63,700	61,700	59,000	61,700
MY Imports	440	440	440	203	135	203	200	200	200
TY Imports	440	440	440	203	135	203	200	200	200
TY Imp. from U.S.	0	0	0	0	0	0	0	0	0
Total Supply	52,071	52,220	52,220	65,722	65,699	65,722	70,329	67,629	70,329
MY Exports	12,552	12,552	12,552	18,393	18,330	18,393	18,000	17,500	18,000
TY Exports	12,552	12,552	12,552	18,393	18,330	18,393	18,000	17,500	18,000
Feed and Residual	15,050	15,150	15,150	16,200	16,240	16,200	18,000	18,000	18,000
FSI Consumption	22,650	22,699	22,699	22,700	22,700	22,700	23,200	22,700	22,700
Total Consumption	37,700	37,849	37,849	38,900	38,940	38,900	41,200	40,700	40,700
Ending Stocks	1,819	1,819	1,819	8,429	8,429	8,429	11,129	9,429	11,629
Total Distribution	52,071	52,220	52,220	65,722	65,699	65,722	70,329	67,629	70,329
Yield	2.	2.	2.02	2.	2.	2.45	2.	2.	2.32

Barley

Barley Russia	2007			2008			2009		
	2007/2008			2008/2009			2009/2010		
	Market Year Begin: Jul 2007			Market Year Begin: Jul 2008			Market Year Begin: Jul 2009		
	USDA Official Data		New Post	USDA Official Data		New Post	USDA Official Data		Jan
			Data			Data			Data
Area Harvested	9,600	8,360	9,600	9,600	9,400	9,400	9,100	9,000	7,750
Beginning Stocks	1,272	1,226	1,226	1,025	1,037	1,025	3,637	3,693	3,637
Production	15,650	15,665	15,650	23,100	23,135	23,100	18,000	17,700	17,875
MY Imports	199	175	199	56	65	56	100	100	50
TY Imports	179	175	179	50	65	50	100	100	50
TY Imp. from U.S.	0	0	0	0	0	0	0	0	0
Total Supply	17,121	17,066	17,075	24,181	24,237	24,181	21,737	21,493	21,562
MY Exports	1,046	1,046	1,046	3,444	3,444	3,444	2,200	2,200	2,200
TY Exports	1,277	1,277	1,277	3,598	3,700	3,598	2,200	2,200	2,200
Feed and Residual	10,450	10,450	10,450	12,300	12,300	12,300	12,400	12,400	12,400
FSI Consumption	4,600	4,533	4,554	4,800	4,800	4,800	4,700	4,700	4,700
Total Consumption	15,050	14,983	15,004	17,100	17,100	17,100	17,100	17,100	17,100
Ending Stocks	1,025	1,037	1,025	3,637	3,693	3,637	2,437	2,193	2,262
Total Distribution	17,121	17,066	17,075	24,181	24,237	24,181	21,737	21,493	21,562
Yield	2.	2.	1.63	2.	2.	2.46	2.	2.	2.31

Corn

Corn Russia	2007			2008			2009		
	2007/2008			2008/2009			2009/2010		
	Market Year Begin: Oct 2007			Market Year Begin: Oct 2008			Market Year Begin: Oct 2009		
	USDA Official Data		New Post	USDA Official Data		New Post	USDA Official Data		Jan
			Data			Data			Data
Area Harvested	1,300	1,300	1,300	1,650	1,550	1,750	1,300	1,600	1,100
Beginning Stocks	175	175	175	167	167	167	236	262	362
Production	3,950	3,950	3,950	6,600	6,645	6,645	4,400	4,400	3,950
MY Imports	341	341	341	100	100	100	250	250	250
TY Imports	341	341	341	100	100	100	250	250	250
TY Imp. from U.S.	8	8	8	0	0	0	0	0	0
Total Supply	4,466	4,466	4,466	6,867	6,912	6,912	4,886	4,912	4,562
MY Exports	49	49	49	1,331	1,350	1,350	200	100	250
TY Exports	49	49	49	1,331	1,350	1,350	200	100	250
Feed and Residual	3,650	3,650	3,650	4,600	4,600	4,500	4,000	4,100	3,700
FSI Consumption	600	600	600	700	700	700	550	600	500
Total Consumption	4,250	4,250	4,250	5,300	5,300	5,200	4,550	4,700	4,200
Ending Stocks	167	167	167	236	262	362	136	112	112
Total Distribution	4,466	4,466	4,466	6,867	6,912	6,912	4,886	4,912	4,562
Yield	3.	3.	3.04	4.	4.	3.80	3.	3.	3.59

Rye

Rye Russia	2007			2008			2009		
	2007/2008			2008/2009			2009/2010		
	Market Year Begin: Jul 2007			Market Year Begin: Jul 2008			Market Year Begin: Jul 2009		
	USDA Official Data		New Post	USDA Official Data		New Post	USDA Official Data		Jan
			Data			Data			Data
Area Harvested	2,100	2,100	2,100	2,200	2,200	2,150	2,200	2,200	2,100
Beginning Stocks	32	76	76	63	63	63	297	288	297
Production	3,900	3,915	3,915	4,500	4,505	4,500	4,000	4,000	4,335
MY Imports	0	5	5	0	0	0	0	0	0
TY Imports	0	5	5	0	0	0	0	0	0
TY Imp. from U.S.	0	0	0	0	0	0	0	0	0
Total Supply	3,932	3,996	3,996	4,563	4,568	4,563	4,297	4,288	4,632
MY Exports	119	118	118	16	20	16	50	50	50
TY Exports	86	86	86	14	20	14	50	50	50
Feed and Residual	600	650	650	750	760	750	750	750	800
FSI Consumption	3,150	3,165	3,165	3,500	3,500	3,500	3,300	3,300	3,480
Total Consumption	3,750	3,815	3,815	4,250	4,260	4,250	4,050	4,050	4,280
Ending Stocks	63	63	63	297	288	297	197	188	302
Total Distribution	3,932	3,996	3,996	4,563	4,568	4,563	4,297	4,288	4,632
Yield	2.	2.	1.8643	2.	2.	2.093	2.	2.	2.0643

Oats

Oats Russia	2007			2008			2009		
	2007/2008			2008/2009			2009/2010		
	Market Year Begin: Jul 2007			Market Year Begin: Jul 2008			Market Year Begin: Jul 2009		
	USDA Official Data		New Post	USDA Official Data		New Post	USDA Official Data		Jan
			Data			Data			Data
Area Harvested	3,700	3,320	3,320	3,700	3,200	3,400	3,500	3,500	3,000
Beginning Stocks	186	190	190	184	184	184	584	584	584
Production	5,400	5,410	5,410	5,800	5,830	5,800	5,000	5,000	5,400
MY Imports	5	0	0	0	0	0	0	0	0
TY Imports	5	0	0	0	0	0	0	0	0
TY Imp. from U.S.	0	0	0	0	0	0	0	0	0
Total Supply	5,591	5,600	5,600	5,984	6,014	5,984	5,584	5,584	5,984
MY Exports	7	0	0	0	0	0	0	0	0
TY Exports	7	0	0	0	0	0	0	0	0
Feed and Residual	3,800	3,816	3,816	3,800	3,830	3,800	3,600	3,600	4,000
FSI Consumption	1,600	1,600	1,600	1,600	1,600	1,600	1,600	1,600	1,600
Total Consumption	5,400	5,416	5,416	5,400	5,430	5,400	5,200	5,200	5,600
Ending Stocks	184	184	184	584	584	584	384	384	384
Total Distribution	5,591	5,600	5,600	5,984	6,014	5,984	5,584	5,584	5,984
Yield	1.	2.	1.63	2.	2.	1.71	1.	1.	1.8

Millet

Millet Russia	2007			2008			2009		
	2007/2008			2008/2009			2009/2010		
	Market Year Begin: Jul 2007			Market Year Begin: Jul 2008			Market Year Begin: Jul 2009		
	USDA Official Data		New Post	USDA Official Data		New Post	USDA Official Data		Jan
			Data			Data			Data
Area Harvested	500	375	375	500	500	500	400	350	250
Beginning Stocks	0	0	0	0	0	0	0	0	0
Production	425	420	420	700	710	710	400	400	265
MY Imports	0	0	0	0	0	0	0	0	0
TY Imports	0	0	0	0	0	0	0	0	0
TY Imp. from U.S.	0	0	0	0	0	0	0	0	0
Total Supply	425	420	420	700	710	710	400	400	265
MY Exports	0	0	0	0	20	20	0	0	0
TY Exports	0	0	0	0	20	20	0	0	0
Feed and Residual	225	220	220	400	400	400	200	200	90
FSI Consumption	200	200	200	300	290	290	200	200	175
Total Consumption	425	420	420	700	690	690	400	400	265
Ending Stocks	0	0	0	0	0	0	0	0	0
Total Distribution	425	420	420	700	710	710	400	400	265
Yield	1.	1.	1.12	1.	1.	1.42	1.	1.	1.06

Rice

Rice, Milled Russia	2007			2008			2009		
	2007/2008			2008/2009			2009/2010		
	Market Year Begin: Jan 2008			Market Year Begin: Jan 2009			Market Year Begin: Jan 2010		
	USDA Official Data		New Post	USDA Official Data		New Post	USDA Official Data		Jan
			Data			Data			Data
Area Harvested	163	160	160	164	170	160	181	170	175
Beginning Stocks	69	69	69	69	69	69	49	49	49
Milled Production	460	460	460	480	475	480	575	635	590
Rough Production	708	708	708	738	731	738	885	977	908
Milling Rate (.9999)	6,500	6,500	6,500	6,500	6,500	6,500	6,500	6,500	6,500
MY Imports	237	233	233	200	200	200	165	165	165
TY Imports	237	233	233	200	200	200	165	165	165
TY Imp. from U.S.	2	0	0	0	2	2	0	3	3
Total Supply	766	762	762	749	744	749	789	849	804
MY Exports	21	15	15	20	20	20	35	55	50
TY Exports	21	15	15	20	20	20	35	55	50
Consumption and Residual	676	678	678	680	675	680	695	725	695
Ending Stocks	69	69	69	49	49	49	59	69	59
Total Distribution	766	762	762	749	744	749	789	849	804
Yield (Rough)	4.	4.	4.43	4.	4.	4.61	5.	6.	5.19