

USDA Foreign Agricultural Service

GAIN Report

Global Agricultural Information Network

THIS REPORT CONTAINS ASSESSMENTS OF COMMODITY AND TRADE ISSUES MADE BY
USDA STAFF AND NOT NECESSARILY STATEMENTS OF OFFICIAL U.S. GOVERNMENT
POLICY

Voluntary Public

Date: 12/10/2014

GAIN Report Number: UP1452

Ukraine

Post: Kiev

Multiple PED Outbreaks Likely to Impact Pork Production

Report Categories:

Pest/Disease Occurrences

Approved By:

Jorge Sanchez, Agricultural Attaché

Prepared By:

Alexander Tarashevych, Agricultural Specialist

Report Highlights:

Since the beginning of 2014, there have been multiple outbreaks of Porcine Epidemic Diarrhea (PED) reported on commercial-scale farms in Ukraine. Insufficient attention paid to the outbreak by the industry and authorities may result in further spread of the virus which could have a significant adverse impact on pork production in 2014-15. Moreover, it may also result in further spread of the virus to neighboring countries, such as Poland, causing a major production decrease in 2015.

General Information:

According to Ukrainian swine industry groups, several Porcine Epidemic Diarrhea (PED) cases were registered in different regions of Ukraine since spring of 2014. The disease is not on the OIE list of notifiable terrestrial and aquatic animal diseases, although its economic impact on production is significant. According to Ukrainian veterinarians, the disease is highly contagious and destroys 100 percent of young piglets infected which causes a major brake in the production cycle. PED outbreaks in Ukraine have had an average length of four to seven weeks, at which point, if not properly contained, the farm could relapse with a subsequent outbreak (see table 1). During the outbreak period, average losses can be calculated at approximately 78 piglets per each hundred sows with average production halt at four weeks.

To date, Ukraine's Veterinary and Phytosanitary Service (VS) do not recognize the danger of the PED virus epidemic. When contacted by FAS/Kyiv, they claimed the disease is not registered in the country. It should be noted that the disease is not the OIE list of reportable disease which may be influencing VS' position on acknowledging the PED epidemic.

FAS/Kyiv has also been in contact with the largest swine producer association, the Swine Breeders of Ukraine (SB), and discovered that SB members have reported three-to-four cases of PED this year. Additional cases are known in non-member farms. Swine farmers in Ukraine are on alert, and as a result, have reportedly increased biosecurity practices as a preventive measure. Special attention has been paid to disinfecting trucks and tightening critical inspection points such as entry ways/exits.

According to internet sources, the disease spread in Ukraine accelerated in November/December 2014. Most of the comments on Ukraine's situation are provided by renowned international veterinarian consultant to the animal production industry: Dr. John Carr. Dr. Carr is considered one of the world's experts on the PED virus. While Ukraine is not a major producer or exporter of pork products, according to Dr. Carr, a PED virus outbreak in several sow farms in Ukraine could lead to the deaths of 30 to 35 million pigs in Europe, and have a major impact on global pig production numbers.

Dr. Carr was invited to Ukraine by SB in spring 2014, but later continued his private consultancy practice on individual infected farms. In November, Dr. Carr spent ten days in Ukraine visiting three farms with PED outbreaks. Although "still struggling to get [it] (the virus) typed because the Ukraine doesn't have the technology and obviously the people in Ukraine have some slightly other issues to worry about," he mentioned in an interview to "Siemens Says" (a respected Canadian agribusiness news blog). "Normally, I'd send my samples to Russia but they aren't quite talking to me at the moment either, making this situation a bit awkward."

Dr. Carr has dealt with PED outbreaks in different parts of the world for over 20 years and has experience spotting the virus as early as 1972. According to Dr. Carr, the PED virus types found in Ukraine are alike those found in China (since 2010) and the United States (since 2013), but different from earlier EU cases. Dr. Carr warns that he "suspect(s) this is the beginning of the European outbreak." He warns that his professional estimation is that the PED virus will kill 25 to 35 million pigs over the next 18 months.

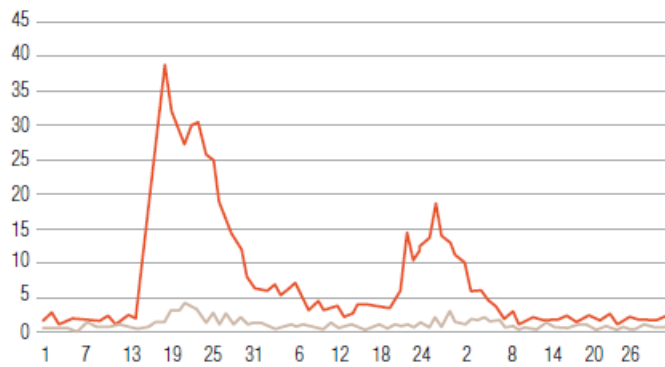
Dr. Carr adds that "of the three big farms I have in Ukraine, two are under control, and the other one is getting under control," and categorizes the impact of Ukraine's outbreaks as more serious than what he had encountered in Asia.

Dr. Carr claimed to have lost as much as 10,000 pigs in just four days in farms he's worked in, and added that

bigger farms would have larger problems. Although information on impacted farms in Ukraine is not publicly available, the size of the losses is confirmed for at least one of the top five largest Ukrainian swine producers in the country who is currently struggling with the disease. Farm managers, hog producers, and farm workers should tighten up biosecurity practices as the best line of defense against this highly contagious strain. They should also work in concert with other farms in neighboring communities. This might be easier said than done, as half of the Ukraine’s swine production is in backyard farms.

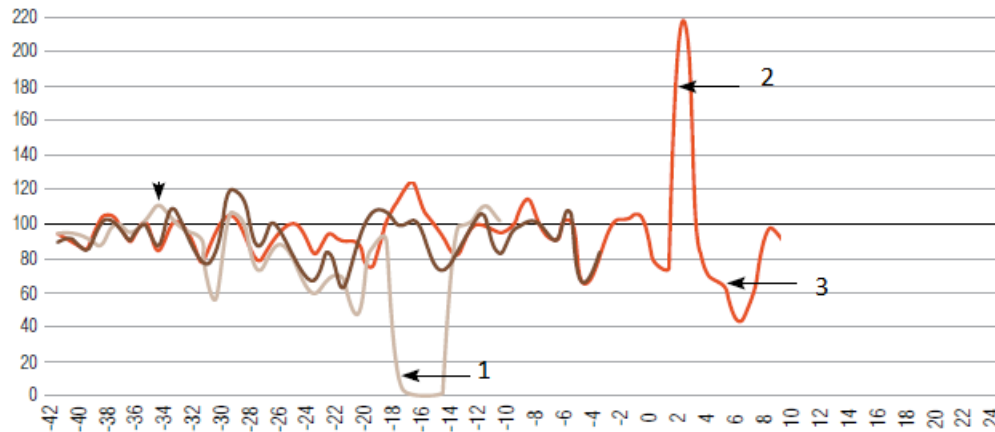
In 2014, Ukrainian farms were unable to dodge the impact of this previously unknown disease which is now on its second epidemic wave. Some farmers have made additional mistakes by inseminating available sows in an attempt to return to target swine population numbers too quickly (see Table 2). The PED virus’ impact on farms may last for as long as 18 months.

Table 1. Piglet Loss Rate in 4500 Sows Farm (January-March of 2014)



Orange line – less than 10 days of age, grey line – over 10 days
 Source: Profitable Swine Farming Magazine

Table 2. Deviation of Pig Population from the Target (100 percent) Number



- 1- Production during PED outbreak
- 2- “Tsunami” impact from farmers’ mistake (insemination of additional sows in an attempt to cover losses)
- 3- Production drops due to the lack of available sows.

Source: Profitable Swine Farming Magazine