

**Required Report:** Required - Public Distribution

**Date:** October 08, 2021

**Report Number:** UP2021-0040

**Report Name:** Grain and Feed Update

**Country:** Ukraine

**Post:** Kyiv

**Report Category:** Grain and Feed

**Prepared By:** Denys Sobolev

**Approved By:** Lisa Ahramjian

**Report Highlights:**

This report contains updated Marketing Year (MY) 2020/21 and MY2021/22 production, trade, and consumption estimates for Ukraine against those discussed in our Annual grain and feed report (UP2021-0017). Ukraine is estimated to increase production and, subsequently, exports of all major grains (barley, wheat and corn) for MY2021/22. This makes it yet another record of the last decade.

## **Production:**

Production of all major grains (except for corn) concluded at the time of report writing. The State Statistics Service of Ukraine (SSSU) has published its production numbers as of September 1, 2021:

- wheat – harvested approximately 6,700 thousand hectares (ha), resulting in approximately 32.2 million metric tons (MMT) of grains;
- barley – approximately 2,400 thousand ha, resulting in approximately 9.6 MMT;
- rye – approximately 170 thousand ha, resulting in approximately 600 thousand metric tons (MT).

According to the information available to Post, grain production in the Crimean Peninsula included:

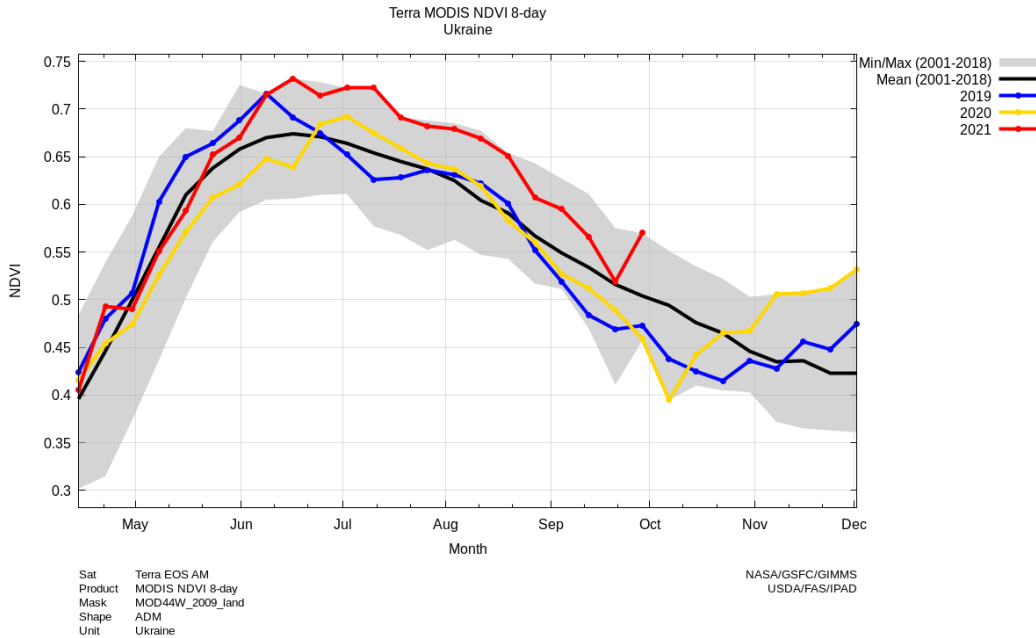
- wheat – approximately 340 thousand ha, resulting in approximately 945 thousand MT of grains;
- barley – approximately 223 thousand ha, resulting in approximately 532 thousand MT;
- rye – approximately three thousand ha, resulting in approximately seven thousand MT.

Post note: the abovementioned numbers are given in bunker weight, which are subsequently converted into the final weight in relevant Production, Supply and Distribution (PSD) tables below.

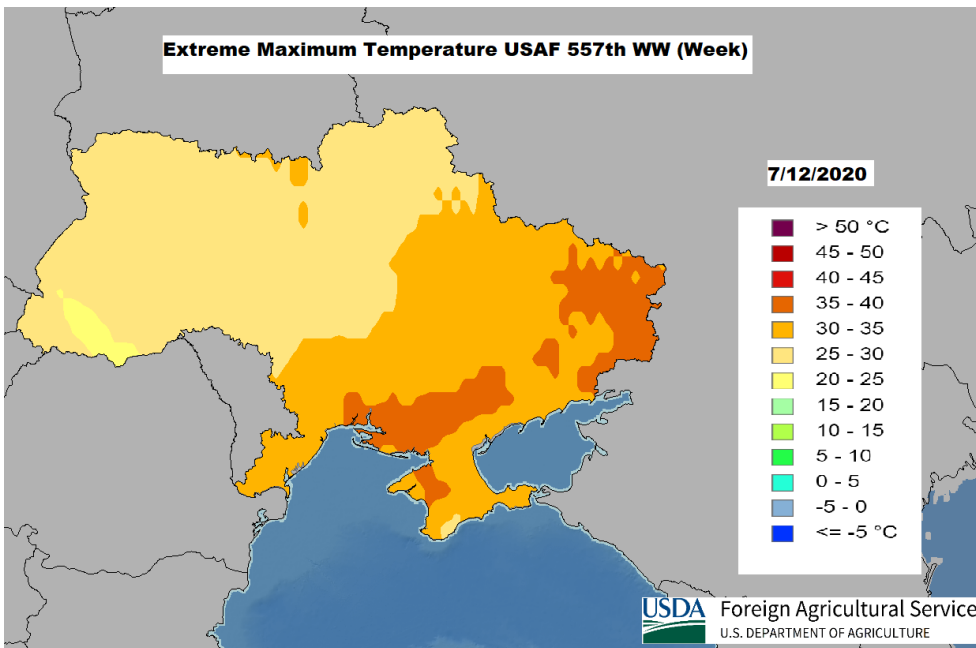
SSSU reports the MY2021/22 corn production area at approximately 5,470 thousand ha and FAS Kyiv accepts it as its estimated area in the PSD table below.

Below is a graph that shows the Normalized Difference Vegetation Index (NDVI) for Ukraine, a standardized measure of healthy vegetation. High NDVI values indicate healthier vegetation. Low NDVI values indicate low or no vegetation.

On one hand, NDVI hints that MY2021/22 growth conditions for corn were characterized as better than the ones for two previous MYs in the row, which might serve as a precondition for increasing Post's yield estimates.



On the other hand, the harvest data reported by the Ministry of Agricultural Policy and Food of Ukraine, as of the end of September 2021, demonstrates lower corn yields against the data for late September 2019. Since corn harvest starts solely in Southern Ukraine at this period and this region was hit by a heatwave in July 2021 (see picture Extreme Maximum Temperature below) when corn flowering occurs – this might have had an adverse impact on corn yields in this region while the rest of Ukraine did not experience such a situation.



Since Southern Ukraine accounts for only around 13 percent of the total corn production area for MY2021/22, Post considers that the reported yield drops will not substantially impact the total corn yields.

Based on the abovementioned arguments, Post estimates MY2021/22 corn yield at the level slightly higher than the one for MY2019/20, with MY2021/22 corn production estimated to reach approximately 40 MMT (please refer to the relevant PSD table for more details).

### **Trade:**

MY2020/21 concluded for wheat, barley and rye (see trade data section for more information) and relevant estimates are included in the PSD tables below.

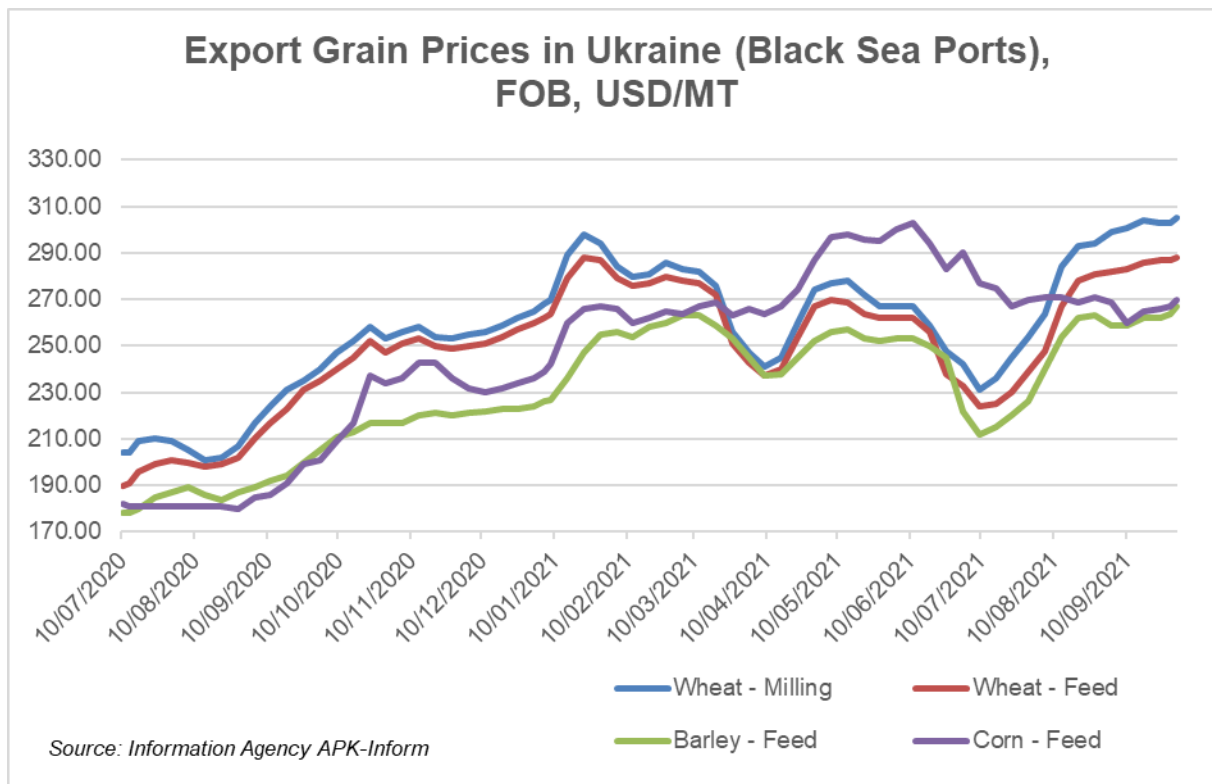
For corn, the MY2020/21 export estimate is composed on: information by Trade Data Monitor available through June 2021; the 1.3 MMT of corn exports for July-August 2021 reported by Ukrainian Information agency “APK Inform,” as well as Post’s own estimate for September based on the normal rate of corn exports for this period.

The most notable aspects for MY2020/21 grain trade include:

- China finally became the major market destination for Ukrainian barley, receiving approximately 70 percent of total exports (around 4.2 MMT). It should be noted that the share of exports to China’s market was only nine percent for MY2018/19.
- Pakistan became a new market by importing approximately 1.4 MMT of Ukrainian wheat and took the third place after two major established clients: Indonesia and Egypt.
- Wheat flour exports dropped by approximately 57 percent compared to the previous MY mainly because of two factors: local millers were squeezed out of competition with grain exporters by soaring grain prices (see Export Grain Prices in Ukraine graph below); and Ukraine exports over half of its total export volume to markets that tend to be price-sensitive;
- On the flip side, growth of domestic grain prices opened up the pathway for imports of wheat flour from neighboring Belarus to satisfy demand for low-price product.
- Corn exports to China grew by 67 percent despite a 21-percent decrease of total corn exports from October 2020 to June 2021. This mainly happened because of sharp decrease of exports to the EU by 33 percent for the same period.

## Consumption and Ending Stocks:

The main trend of the late summer – early fall of 2021 is the continued drop of corn prices (both domestic and export) with wheat prices in September 2021 finally exceeding those for barley and corn at the time of the report writing.



Given the fact that corn again became a relatively cheaper feed ingredient compared wheat, the Post updated its previous feed estimates available in our [GAIN Report UP2021-0022](#) by slightly increasing corn feed consumption at the expense of decreased feed consumption for wheat in MY2021/22. It is based on the price argument: wheat was one of the most affordable feed grains on the market for the second half of MY2020/21, while becoming the most expensive one in the beginning of MY2021/22.

For more rationale behind consumption and ending stocks estimates included in PSD tables below, see our annual [GAIN Report UP2021-0017](#).

## Production, Supply and Distribution Data Statistics

### Wheat

MY2021/22 Post's production estimate is 2.5 percent lower than USDA's official number based on available statistical information.

MY2019/20 and MY2020/21: Post's import estimates are 16 and six percent lower, respectively, compared to the USDA's official numbers based on available trade data.

MY2020/21 and MY2021/22: Post's feed and residual consumption estimates are approximately 27 percent higher and 33 percent lower, respectively, compared to the USDA's official numbers. Please refer to the Consumption section above for more details.

MY2019/20, MY2020/21, and MY2021/22: Post's ending stocks estimates are three, 43 and 34 percent lower, respectively, compared to USDA's official numbers based on estimated production and export volumes for the relevant MYs.

Please be advised that in the PSD table below, both export and import volumes for flour and wheat products (HS Codes 1101, 190219, 190230, 190240) are converted to wheat grain equivalent by multiplying the product weight by 1.368 and added to export volumes for wheat (HS Code 1001) in order to present a comprehensive picture of wheat trade by Ukraine.

Wheat Market Year Begins Ukraine	2019/2020		2020/2021		2021/2022	
	Jul 2019		Jul 2020		Jul 2021	
	USDA Official	New Post	USDA Official	New Post	USDA Official	New Post
Area Harvested (1000 HA)	7,020	6,808	6,847	6,847	7,400	7,314
Beginning Stocks (1000 MT)	1,555	1,555	1,504	1,465	1,505	862
Production (1000 MT)	29,171	29,144	25,420	25,420	33,000	32,165
MY Imports (1000 MT)	94	79	132	124	100	100
TY Imports (1000 MT)	94	82	132	124	100	100
TY Imp. from U.S. (1000 MT)	0	0	0	0	0	0
Total Supply (1000 MT)	30,820	30,778	27,056	27,009	34,605	33,127
MY Exports (1000 MT)	21,016	21,013	16,851	16,847	23,500	23,800
TY Exports (1000 MT)	21,016	21,013	16,851	16,847	23,500	23,800
Feed and Residual (1000 MT)	2,200	2,200	2,600	3,300	3,300	2,200
FSI Consumption (1000 MT)	6,100	6,100	6,100	6,000	6,100	6,000
Total Consumption (1000 MT)	8,300	8,300	8,700	9,300	9,400	8,200
Ending Stocks (1000 MT)	1,504	1,465	1,505	862	1,705	1,127
Total Distribution (1000 MT)	30,820	30,778	27,056	27,009	34,605	33,127
Yield (MT/HA)	4.16	4.28	3.71	3.71	4.46	4.40

(1000 HA) ,(1000 MT) ,(MT/HA)

MY = Marketing Year, begins with the month listed at the top of each column

TY = Trade Year, which for Wheat begins in July for all countries. TY 2021/2022 = July 2021 - June 2022

## Barley

MY2021/22: Post's production estimate is approximately six percent lower compared to USDA's official number based on available statistical data.

MY2021/22: Post's export estimate is approximately eight percent higher than USDA's official number.

Post's feed and residual consumption estimates are approximately three percent higher for both MY2019/20 and MY2020/21 and approximately nine percent lower for MY2021/22 compared to USDA's official numbers based on arguments discussed in the Consumption section of our annual [GAIN Report UP2021-0017](#).

MY2019/20, MY2020/21, and MY2021/22: Post's ending stock estimates are approximately 16, 34, and 18 percent lower, respectively, compared to USDA's official numbers based on estimated production and export volumes for the relevant MYs.

Barley Market Year Begins Ukraine	2019/2020		2020/2021		2021/2022	
	Jul 2019		Jul 2020		Jul 2021	
	USDA Official	New Post	USDA Official	New Post	USDA Official	New Post
Area Harvested (1000 HA)	2,782	2,605	2,584	2,592	2,700	2,678
Beginning Stocks (1000 MT)	1,008	1,008	1,053	884	909	601
Production (1000 MT)	9,528	9,459	7,947	7,947	10,500	9,820
MY Imports (1000 MT)	1	1	48	48	10	10
TY Imports (1000 MT)	0	0	48	48	10	10
TY Imp. from U.S. (1000 MT)	0	0	0	0	0	0
Total Supply (1000 MT)	10,537	10,468	9,048	8,879	11,419	10,431
MY Exports (1000 MT)	4,984	4,984	4,139	4,178	6,000	5,500
TY Exports (1000 MT)	4,990	4,990	4,700	4,178	6,000	5,500
Feed and Residual (1000 MT)	3,300	3,400	2,800	2,900	3,200	2,900
FSI Consumption (1000 MT)	1,200	1,200	1,200	1,200	1,200	1,200
Total Consumption (1000 MT)	4,500	4,600	4,000	4,100	4,400	4,100
Ending Stocks (1000 MT)	1,053	884	909	601	1,019	831
Total Distribution (1000 MT)	10,537	10,468	9,048	8,879	11,419	10,431
Yield (MT/HA)	3.42	3.63	3.08	3.07	3.89	3.67

(1000 HA) ,(1000 MT) ,(MT/HA)

MY = Marketing Year, begins with the month listed at the top of each column

TY = Trade Year, which for Barley begins in October for all countries. TY 2021/2022 = October 2021 - September 2022

## Corn

MY2021/22: Post's production estimate is approximately two percent higher than USDA's official number based on arguments discussed in the production section.

MY2021/22: Post's import estimate is approximately 87 percent higher than USDA's official number based on relatively stable corn production areas over the last three years, suggesting stable planting seed imports.

MY2020/21: Post's export estimate is approximately two percent higher than USDA's official number based on arguments included in the Trade section above.

MY2021/22: Post's export estimate is approximately six percent higher than USDA's official number based estimated production and consumption numbers.

MY2020/21: Post's feed and residual consumption estimate is approximately 33 percent lower compared to USDA's official number based on arguments discussed in the Consumption and Ending Stocks section above.

MY2020/21: Post's FSI consumption estimate is approximately eight percent lower compared to the USDA's official number, based on stable consumption patterns.

MY2019/20, MY2020/21 and MY2021/22 Post's ending stocks estimates are around five percent, around three-fold, and 37 percent higher, respectively, compared to USDA's official numbers based on estimated production and export volumes for the relevant MYs.

Corn Market Year Begins	2019/2020		2020/2021		2021/2022	
	Oct 2019		Oct 2020		Oct 2021	
	USDA Official	New Post	USDA Official	New Post	USDA Official	New Post
Ukraine						
Area Harvested (1000 HA)	4,991	5,005	5,395	5,395	5,420	5,470
Beginning Stocks (1000 MT)	891	891	1,478	1,546	895	2,637
Production (1000 MT)	35,887	35,855	30,297	30,297	39,000	39,658
MY Imports (1000 MT)	29	29	20	20	15	28
TY Imports (1000 MT)	29	29	20	20	15	28
TY Imp. from U.S. (1000 MT)	1	1	0	1	0	1
Total Supply (1000 MT)	36,807	36,775	31,795	31,863	39,910	42,323
MY Exports (1000 MT)	28,929	28,929	23,600	24,026	32,000	34,000
TY Exports (1000 MT)	28,929	28,929	23,600	24,026	32,000	34,000
Feed and Residual (1000 MT)	5,200	5,100	6,100	4,100	5,600	5,600
FSI Consumption (1000 MT)	1,200	1,200	1,200	1,100	1,200	1,200
Total Consumption (1000 MT)	6,400	6,300	7,300	5,200	6,800	6,800
Ending Stocks (1000 MT)	1,478	1,546	895	2,637	1,110	1,523
Total Distribution (1000 MT)	36,807	36,775	31,795	31,863	39,910	42,323
Yield (MT/HA)	7.19	7.16	5.62	5.62	7.20	7.25

(1000 HA) ,(1000 MT) ,(MT/HA)

MY = Marketing Year, begins with the month listed at the top of each column

TY = Trade Year, which for Corn begins in October for all countries. TY 2021/2022 = October 2021 - September 2022



## Rye

MY2021/22: Post's production estimate is approximately two percent higher compared to USDA's official number based on available statistical information.

MY2021/22: Post's export estimate is 10-fold higher compared to USDA's official number, based on estimated production and domestic consumption numbers.

MY2020/21 and MY2021/22: Post's feed and residual consumption estimates are 80 and 87 percent lower, respectively, compared to the USDA's official number based on low rye usage in animal feeds.

MY2020/21 and MY2021/22: Post's FSI estimates are 17 and 38 percent lower, respectively, compared to USDA's official numbers based on stable consumption patterns for this crop in baking industry.

MY2020/21 and MY2021/22: Post's ending stock estimates are 95 percent higher and 12 percent higher, respectively, compared to USDA's official numbers based on estimated production and export volumes for the relevant MYs.

Rye Market Year Begins	2019/2020		2020/2021		2021/2022	
	Jul 2019		Jul 2020		Jul 2021	
	USDA Official	New Post	USDA Official	New Post	USDA Official	New Post
Ukraine						
Area Harvested (1000 HA)	117	117	140	140	175	170
Beginning Stocks (1000 MT)	47	47	48	48	82	160
Production (1000 MT)	339	339	459	459	575	588
MY Imports (1000 MT)	2	2	2	2	0	2
TY Imports (1000 MT)	2	2	1	2	0	2
TY Imp. from U.S. (1000 MT)	0	0	0	0	0	0
Total Supply (1000 MT)	388	388	509	509	657	750
MY Exports (1000 MT)	8	8	17	17	35	350
TY Exports (1000 MT)	8	8	20	17	35	350
Feed and Residual (1000 MT)	2	2	10	2	15	2
FSI Consumption (1000 MT)	330	330	400	330	530	330
Total Consumption (1000 MT)	332	332	410	332	545	332
Ending Stocks (1000 MT)	48	48	82	160	77	68
Total Distribution (1000 MT)	388	388	509	509	657	750
Yield (MT/HA)	2.90	2.90	3.28	3.28	3.29	3.46

(1000 HA) ,(1000 MT) ,(MT/HA)

MY = Marketing Year, begins with the month listed at the top of each column

TY = Trade Year, which for Rye begins in October for all countries. TY 2021/2022 = October 2021 - September 2022

## Trade Data

### Barley Exports from Ukraine by Destination, MY, 1000 MT (HS Code 1003)

Destination	MY 2018/19 (July 18-June 19)		MY 2019/20 (July 19-June 20)		MY 2020/21 (July 20-June 21)		% Change MY 2020/21 to 2019/20
	Quantity	% Share	Quantity	% Share	Quantity	% Share	
World	3,560.2	100.0	4,983.9	100.0	4,187.2	100.0	-16.0
East and Southeast Asia	443.3	12.5	921.5	18.5	2,906.1	69.4	215.4
Middle East	2,573.5	72.3	2,482.2	49.8	649.6	15.5	-73.8
Africa	503.1	14.1	1,044.1	21.0	552.0	13.2	-47.1
EU 27 Brexit	37.9	1.1	507.8	10.2	63.6	1.5	-87.5
South Asia	0.9	0.0	16.3	0.3	14.8	0.4	-9.1
Eurasian Economic Union	0.1	0.0	9.2	0.2	0.0	0.0	-100.0
China	321.9	9.0	920.7	18.5	2,905.9	69.4	215.6
Saudi Arabia	2,333.9	65.6	1,382.7	27.7	334.2	8.0	-75.8
Libya	260.1	7.3	226.8	4.6	294.8	7.0	30.0
Tunisia	95.9	2.7	234.0	4.7	161.4	3.9	-31.0
Israel	58.5	1.6	208.8	4.2	102.0	2.4	-51.2
Algeria	70.5	2.0	274.9	5.5	78.9	1.9	-71.3
Jordan	0.0	0.0	126.0	2.5	56.4	1.4	-55.2
Qatar	71.6	2.0	140.6	2.8	46.6	1.1	-66.8
Cyprus	25.9	0.7	49.3	1.0	40.6	1.0	-17.7
Lebanon	24.4	0.7	4.4	0.1	35.6	0.9	709.9
United Arab Emirates	9.9	0.3	98.1	2.0	28.3	0.7	-71.1
Turkey	20.7	0.6	325.2	6.5	22.9	0.6	-93.0
Iran	36.5	1.0	62.6	1.3	17.1	0.4	-72.8
Romania	6.0	0.2	20.6	0.4	16.1	0.4	-21.8
Other	224.5	6.3	909.0	18.2	46.4	1.1	0.0

Source: Trade Data Monitor, LLC

### Barley Imports to Ukraine by Country of Origin, MY, 1000 MT (HS Code 1003)

Destination	MY 2018/19 (July 18-June 19)		MY 2019/20 (July 19-June 20)		MY 2020/21 (July 20-June 21)		% Change MY 2020/21 to 2019/20
	Quantity	% Share	Quantity	% Share	Quantity	% Share	
_World	16.1	100.0	0.7	100.0	48.0	100.0	6,440.9
Eurasian Economic Union	15.1	93.8	0.0	0.0	41.5	86.4	0.0
EU 27 Brexit	1.0	6.2	0.7	100.0	6.5	13.6	789.3
Russia	15.1	93.8	0.0	0.0	36.6	76.3	0.0
Sweden	0.0	0.0	0.0	0.0	6.0	12.5	0.0
Belarus	0.0	0.0	0.0	0.0	4.8	10.1	0.0
Germany	0.3	2.2	0.1	18.0	0.2	0.5	72.9
Czech Republic	0.3	2.0	0.3	35.5	0.2	0.5	-13.3
France	0.0	0.3	0.0	3.9	0.0	0.1	31.4
Austria	0.0	0.3	0.0	2.9	0.0	0.1	38.8
Poland	0.2	1.3	0.3	38.3	0.0	0.0	-96.4
Romania	0.0	0.0	0.0	0.0	0.0	0.0	-33.3
Hungary	0.0	0.2	0.0	1.4	0.0	0.0	-100.0
Netherlands	0.0	0.0	0.0	0.0	0.0	0.0	-24.0
Canada	0.0	0.0	0.0	0.0	0.0	0.0	0.0
United States	0.0	0.0	0.0	0.0	0.0	0.0	0.0
Serbia	0.0	0.0	0.0	0.0	0.0	0.0	0.0

Source: Trade Data Monitor, LLC

**Corn Export Statistics by Month and Destination, Ukraine, 1000 MT (HS Code 1005)**

Destination	Subtotal Oct 2019 - June 2020	Subtotal MY 2019/20	Oct-20	Nov-20	Dec-20	Jan-21	Feb-21	Mar-21	Apr-21	May-21	Jun-21	Subtotal Oct 2020 - June 2021	% Change Oct 2020 - June 2021 to Oct 2019 - June 2020
World	28,296.1	28,928.8	1,842.5	3,106.3	3,824.5	1,995.5	2,476.1	2,620.1	2,628.0	2,245.4	1,698.2	22,436.6	79.3
EU 27 Brexit	10,185.3	10,308.0	819.3	687.3	1,229.5	614.4	1,047.4	586.4	493.2	710.9	618.9	6,807.1	66.8
East and Southeast Asia	7,196.9	7,584.9	731.3	1,300.9	1,532.0	599.3	579.7	1,266.2	1,341.4	678.6	463.2	8,492.6	118.0
Middle East	4,584.9	4,605.2	34.0	353.5	459.3	133.4	345.9	359.1	422.9	493.3	271.5	2,872.7	62.7
Africa	5,298.8	5,361.5	162.7	699.2	543.0	563.0	373.9	323.0	337.8	301.1	201.6	3,505.4	66.2
South Asia	232.9	233.5	0.0	0.0	0.0	0.0	0.0	0.0	0.0	0.0	0.0	0.0	0.0
Eurasian Economic Union	118.1	118.1	0.0	0.0	0.2	0.7	6.1	2.4	0.7	0.1	0.0	10.2	8.6
China	5,036.5	5,424.5	721.3	1,300.7	1,531.7	598.1	579.6	1,266.0	1,338.8	628.3	462.8	8,427.3	167.3
Spain	3,530.2	3,530.2	175.9	180.9	434.2	148.6	470.1	37.2	154.3	171.8	127.3	1,900.4	53.8
Netherlands	3,088.0	3,108.4	368.7	178.0	360.6	199.4	151.0	260.1	212.0	177.8	375.1	2,282.7	73.9
Egypt	3,126.7	3,151.9	60.6	497.9	340.9	304.1	308.0	203.7	157.9	198.4	144.5	2,216.0	70.9
Iran	1,232.9	1,232.9	0.0	168.9	3.2	0.0	74.2	200.9	244.3	321.8	200.6	1,213.8	98.5
Turkey	1,715.1	1,723.9	0.0	51.3	205.9	90.7	112.6	49.7	57.9	0.0	0.0	568.1	33.1
South Korea	1,963.8	1,963.8	0.0	0.2	0.3	1.0	0.1	0.0	0.3	50.4	0.4	52.6	2.7
Portugal	816.0	816.0	82.4	33.0	142.8	105.7	170.6	54.7	30.9	111.5	0.0	731.4	89.6
Italy	756.6	756.6	77.2	80.5	155.8	36.2	84.6	42.5	89.8	67.4	54.1	688.1	90.9
United Kingdom	603.7	640.2	94.4	65.1	57.5	84.3	122.6	82.4	31.8	60.7	143.1	741.8	122.9
Algeria	874.6	874.6	0.0	66.9	34.3	150.2	31.9	69.5	44.0	23.4	0.0	420.2	48.1
Israel	833.6	833.6	0.0	105.0	207.1	0.2	89.8	35.6	15.1	0.0	0.1	453.1	54.4
Belgium	536.2	602.5	0.0	104.6	64.1	44.0	43.9	108.0	0.0	107.8	61.1	533.5	99.5
Libya	516.6	554.1	77.4	32.6	69.8	25.0	0.0	49.8	39.7	38.8	57.1	390.3	75.5
Ireland	657.8	657.8	31.9	29.0	33.0	70.4	23.0	72.2	0.0	0.0	0.0	259.5	39.5
Tunisia	473.3	473.3	24.7	101.4	97.4	31.1	33.0	0.0	96.2	30.5	0.0	414.3	87.5
Germany	483.2	491.6	55.0	56.5	27.9	0.0	91.6	2.2	0.0	61.4	0.4	295.0	61.1
Lebanon	178.1	189.7	34.0	28.0	43.2	16.4	25.2	6.5	41.1	22.1	7.0	223.4	125.4
Oman	128.2	128.2	0.0	0.0	0.0	0.0	0.0	65.4	64.4	66.0	63.8	259.6	202.5
Morocco	286.4	286.4	0.0	0.0	0.0	30.5	1.0	0.0	0.0	0.0	0.0	31.5	11.0
Lithuania	236.1	259.8	21.3	1.5	2.6	3.3	1.7	5.7	5.4	2.3	0.6	44.3	18.8
Other	1,222.7	1,228.8	17.7	24.1	12.3	56.4	61.6	8.0	3.9	105.3	0.3	289.6	23.7

Source: Trade Data Monitor, LLC

**Corn Import Statistics by Month and Country of Origin, Ukraine, MT (HS Code 1005)**

Destination	Subtotal Oct 2019 - June 2020	Subtotal MY 2019/20	Oct-20	Nov-20	Dec-20	Jan-21	Feb-21	Mar-21	Apr-21	May-21	Jun-21	Subtotal Oct 2020 - June 2021	% Change Oct 2020 - June 2021 to Oct 2019 - June 2020
World	28,362	41,008	115	1,489	3,813	2,618	4,212	6,105	1,182	109	177	19,820	69.9
EU 27 Brexit	23,118	34,327	35	1,330	2,840	2,596	4,079	5,338	1,054	97	114	17,483	75.6
United States	764	782	0	0	0	0	0	17	41	10	63	131	17.1
France	5,258	8,851	20	16	890	1,216	1,291	2,377	497	6	63	6,376	121.3
Spain	94	212	0	23	0	25	45	25	46	50	50	264	280.9
India	1	1	0	0	0	0	0	1	0	0	1	2	200.0
Italy	2	74	0	9	58	5	0	0	0	0	1	73	3650.0
Mexico	2	2	0	0	0	0	0	0	2	0	0	2	100.0
Moldova	57	57	0	0	0	0	0	0	1	1	0	2	3.5
New Zealand	9	9	0	0	0	0	0	10	1	0	0	11	122.2
Poland	21	21	0	0	0	0	0	12	7	0	0	19	90.5
South Africa	100	100	0	0	0	0	0	0	0	0	0	0	0.0
Romania	7,749	9,910	0	505	354	492	717	488	153	0	0	2,709	35.0
Senegal	0	0	0	0	0	0	0	2	0	0	0	2	∞
Serbia	1,535	1,579	0	20	20	4	0	299	23	0	0	366	23.8
Slovakia	132	223	0	0	0	0	91	376	30	0	0	497	376.5
Georgia	0	0	0	0	0	0	0	0	7	0	0	7	∞
Germany	105	141	0	0	19	0	17	21	11	9	0	77	73.3
Greece	0	0	0	0	0	0	0	17	0	0	0	17	∞
Hungary	8,370	12,599	15	718	1,102	682	1,685	1,485	229	22	0	5,938	70.9
Argentina	4	30	0	0	0	0	0	0	0	0	0	0	0.0
Austria	1,022	1,735	0	60	318	176	136	440	51	9	0	1,190	116.4
Belarus	60	963	0	0	903	0	0	165	0	0	0	1,068	1780.0
Canada	12	12	0	0	0	0	0	0	3	0	0	3	25.0
Chile	21	281	80	125	30	0	0	28	2	1	0	266	1266.7
Croatia	363	558	0	0	99	0	96	97	29	0	0	321	88.4
Switzerland	1,766	1,878	0	0	0	18	94	149	25	0	0	286	16.2
Turkey	911	986	0	14	21	0	40	97	22	0	0	194	21.3

Source: Trade Data Monitor, LLC

**Wheat Exports from Ukraine by Destination, MY, 1000 MT (HS Code 1001)**

Destination	MY 2018/19 (July 18-June 19)		MY 2019/20 (July 19-June 20)		MY 2020/21 (July 20-June 21)		% Change MY 2020/21 to 2019/20
	Quantity	% Share	Quantity	% Share	Quantity	% Share	
World	15,577.8	100.0	20,525.9	100.0	16,639.7	100.0	-18.9
Africa	5,803.0	37.3	7,969.2	38.8	6,007.0	36.1	-24.6
East and Southeast Asia	5,976.8	38.4	5,577.3	27.2	4,450.8	26.8	-20.2
Middle East	1,482.5	9.5	3,761.3	18.3	2,759.9	16.6	-26.6
South Asia	1,296.9	8.3	2,297.6	11.2	2,653.4	16.0	15.5
EU 27 Brexit	826.2	5.3	523.4	2.6	662.9	4.0	26.7
Eurasian Economic Union	29.3	0.2	15.7	0.1	0.3	0.0	-98.1
Indonesia	2,598.5	16.7	2,985.1	14.5	2,606.3	15.7	-12.7
Egypt	1,961.5	12.6	3,802.1	18.5	2,458.5	14.8	-35.3
Pakistan	0.0	0.0	0.0	0.0	1,398.9	8.4	0.0
Bangladesh	1,296.0	8.3	2,295.2	11.2	1,126.8	6.8	-50.9
Morocco	1,162.4	7.5	636.5	3.1	1,085.1	6.5	70.5
Turkey	365.9	2.4	1,397.1	6.8	794.0	4.8	-43.2
Yemen	223.2	1.4	885.7	4.3	793.1	4.8	-10.5
Tunisia	935.1	6.0	1,007.0	4.9	701.0	4.2	-30.4
Libya	652.1	4.2	626.7	3.1	651.4	3.9	3.9
Lebanon	339.1	2.2	578.6	2.8	628.3	3.8	8.6
Philippines	1,566.2	10.1	1,055.7	5.1	565.5	3.4	-46.4
Thailand	828.7	5.3	611.3	3.0	481.3	2.9	-21.3
Ethiopia	0.0	0.0	363.2	1.8	361.0	2.2	-0.6
Spain	312.9	2.0	316.7	1.5	347.6	2.1	9.8
South Korea	723.8	4.7	397.0	1.9	322.6	1.9	-18.7
Vietnam	0.0	0.0	1.0	0.0	267.4	1.6	26,216.5
Israel	471.6	3.0	448.4	2.2	196.7	1.2	-56.1
Jordan	61.6	0.4	215.9	1.1	187.8	1.1	-13.0
Malaysia	167.0	1.1	418.8	2.0	182.1	1.1	-56.5
Italy	232.3	1.5	133.7	0.7	160.8	1.0	20.2
Saudi Arabia	0.0	0.0	0.0	0.0	154.4	0.9	0.0
Mauritania	139.0	0.9	172.9	0.8	137.2	0.8	-20.7
Sri Lanka	0.8	0.0	0.2	0.0	127.6	0.8	60,669.8
Greece	14.4	0.1	18.3	0.1	95.5	0.6	421.4
Mozambique	0.0	0.0	84.9	0.4	89.8	0.5	5.7
Nigeria	142.2	0.9	242.0	1.2	89.1	0.5	-63.2
Tanzania	43.0	0.3	28.7	0.1	86.0	0.5	199.3
Djibouti	59.5	0.4	166.2	0.8	79.5	0.5	-52.2
Somalia	0.0	0.0	0.0	0.0	70.0	0.4	0.0
South Africa	54.9	0.4	96.7	0.5	60.0	0.4	-38.0
Netherlands	156.2	1.0	24.9	0.1	47.0	0.3	88.4
Kenya	246.2	1.6	300.7	1.5	40.5	0.2	-86.6
Mexico	82.1	0.5	285.5	1.4	32.7	0.2	-88.5
Madagascar	0.0	0.0	0.0	0.0	32.7	0.2	0.0
Ecuador	0.0	0.0	27.2	0.1	32.6	0.2	20.2
Angola	0.0	0.0	13.1	0.1	22.0	0.1	67.5
Myanmar	13.9	0.1	78.8	0.4	19.3	0.1	-75.6
Cameroon	0.0	0.0	0.0	0.0	17.0	0.1	0.0
United Kingdom	55.8	0.4	32.6	0.2	14.1	0.1	-56.9
Algeria	12.7	0.1	34.8	0.2	13.0	0.1	-62.7
Other	659.3	0.0	742.6	0.0	63.4	0.0	0.0

Source: Trade Data Monitor, LLC

**Wheat Flour and Products Exports from Ukraine by Destination, MY, 1000 MT  
(HS Codes 1101, 190219, 190230, 190240)**

Destination	MY 2018/19 (July 18-June 19)		MY 2019/20 (July 19-June 20)		MY 2020/21 (July 20-June 21)		% Change MY 2020/21 to 2019/20
	Quantity	% Share	Quantity	% Share	Quantity	% Share	
World	322.4	100.0	355.9	100.0	151.9	100.0	-57.3
Middle East	110.8	34.4	136.2	38.3	72.1	47.5	-47.0
Africa	48.1	14.9	56.8	16.0	18.9	12.5	-66.7
EU 27 Brexit	12.7	3.9	14.0	3.9	16.6	11.0	18.7
East and Southeast Asia	93.6	29.0	100.8	28.3	7.7	5.1	-92.4
Eurasian Economic Union	7.8	2.4	6.0	1.7	3.3	2.2	-44.1
South Asia	0.0	0.0	0.0	0.0	0.4	0.3	544,358.3
United Arab Emirates	48.7	15.1	84.2	23.7	32.1	21.2	-61.8
Moldova	35.2	10.9	29.3	8.2	22.2	14.6	-24.4
Gaza Strip and West Bank	35.4	11.0	31.4	8.8	19.4	12.8	-38.2
Israel	17.3	5.4	16.5	4.7	19.0	12.5	14.7
Somalia	14.3	4.4	19.9	5.6	10.9	7.2	-45.0
Singapore	40.9	12.7	41.4	11.6	5.9	3.9	-85.9
Venezuela	3.0	1.0	4.3	1.2	5.1	3.4	18.7
Germany	2.6	0.8	3.3	0.9	4.0	2.6	19.2
Mozambique	0.0	0.0	25.6	7.2	3.9	2.6	-84.9
United Kingdom	6.6	2.0	3.6	1.0	3.7	2.4	2.3
Belarus	4.3	1.3	4.5	1.3	3.0	2.0	-33.2
Romania	1.9	0.6	2.6	0.7	2.6	1.7	1.8
Spain	1.5	0.5	1.6	0.5	2.1	1.4	31.2
China	48.4	15.0	34.9	9.8	1.6	1.1	-95.3
Djibouti	3.2	1.0	1.3	0.4	1.1	0.7	-19.1
Lithuania	1.2	0.4	1.0	0.3	1.1	0.7	7.9
Other	57.9	17.9	50.4	14.2	14.3	9.4	-71.6

Source: Trade Data Monitor, LLC

**Wheat Flour and Products Imports to Ukraine by Country of Origin, MY, 1000 MT  
(HS Codes 1101, 190219, 190230, 190240)**

Destination	MY 2018/19 (July 18-June 19)		MY 2019/20 (July 19-June 20)		MY 2020/21 (July 20-June 21)		% Change MY 2020/21 to 2019/20
	Quantity	% Share	Quantity	% Share	Quantity	% Share	
World	49.7	100.0	56.3	100.0	71.6	100.0	27.2
EU 27 Brexit	30.2	60.8	41.6	73.8	40.9	57.1	-1.6
Eurasian Economic Union	6.5	13.1	1.0	1.8	17.0	23.8	1,613.8
Middle East	11.0	22.1	11.5	20.5	11.1	15.4	-4.2
East and Southeast Asia	1.0	2.0	1.4	2.4	2.1	2.9	53.7
Africa	0.9	1.8	0.7	1.3	0.4	0.6	-46.5
South Asia	0.0	0.0	0.0	0.0	0.0	0.0	378.8
Italy	19.2	38.7	28.3	50.4	28.6	40.0	1.0
Belarus	5.7	11.5	0.4	0.7	16.5	23.0	4,236.5
Turkey	11.0	22.1	11.5	20.5	11.0	15.4	-4.6
Poland	9.3	18.8	10.6	18.8	9.4	13.2	-10.9
China	0.6	1.1	0.8	1.4	1.2	1.7	50.9
Latvia	0.4	0.8	0.9	1.7	1.1	1.6	19.6
Vietnam	0.4	0.7	0.5	0.8	0.7	1.0	52.5
Russia	0.8	1.5	0.6	1.1	0.5	0.8	-11.2
Hungary	0.5	1.0	0.7	1.2	0.4	0.6	-33.3
Greece	0.0	0.1	0.2	0.4	0.4	0.6	59.3
France	0.5	0.9	0.4	0.6	0.3	0.4	-16.5
Tunisia	0.6	1.2	0.5	0.9	0.3	0.4	-47.7
Finland	0.1	0.1	0.1	0.2	0.1	0.2	11.3
Netherlands	0.0	0.1	0.0	0.1	0.1	0.2	268.8
Egypt	0.2	0.4	0.2	0.4	0.1	0.2	-50.0
Germany	0.1	0.2	0.1	0.1	0.1	0.2	85.2
South Korea	0.0	0.0	0.0	0.1	0.1	0.2	240.2
Thailand	0.1	0.2	0.1	0.1	0.1	0.1	13.8
Czech Republic	0.0	0.0	0.1	0.1	0.1	0.1	-7.8
Slovakia	0.0	0.0	0.0	0.1	0.1	0.1	114.4
Belgium	0.0	0.0	0.1	0.1	0.1	0.1	0.7
United States	0.1	0.1	0.1	0.1	0.0	0.1	-24.4
Israel	0.0	0.0	0.0	0.0	0.0	0.0	1,083.2
Romania	0.0	0.0	0.0	0.0	0.0	0.0	0.0
Other	0.1	0.2	0.1	0.2	0.2	0.2	40.2

Source: Trade Data Monitor, LLC



**Rye Exports from Ukraine by Destination, MY, 1000 MT (HS Code 1002)**

Destination	MY 2018/19 (July 18-June 19)		MY 2019/20 (July 19-June 20)		MY 2020/21 (July 20-June 21)		% Change MY 2020/21 to 2019/20
	Quantity	% Share	Quantity	% Share	Quantity	% Share	
World	88.4	100.0	8.2	100.0	17.1	100.0	108.4
EU 27 Brexit	53.9	60.9	0.2	1.9	15.4	89.7	9,818.0
Eurasian Economic Union	0.6	0.6	1.9	23.1	1.7	9.9	-10.4
Middle East	6.6	7.5	3.2	39.3	0.0	0.3	-98.5
East and Southeast Asia	15.2	17.2	0.0	0.0	0.0	0.0	0.0
Africa	2.2	2.5	0.0	0.0	0.0	0.0	0.0
South Asia	9.4	10.6	2.9	35.6	0.0	0.0	-100.0
Poland	32.0	36.1	0.2	1.9	8.7	50.8	5,541.9
Lithuania	12.1	13.6	0.0	0.0	6.6	38.8	0.0
Belarus	0.6	0.6	1.9	23.1	1.7	9.9	-10.4
Israel	6.6	7.5	0.1	0.8	0.0	0.3	-30.6
Moldova	0.0	0.0	0.0	0.1	0.0	0.1	96.8
United Kingdom	0.0	0.0	0.0	0.0	0.0	0.0	0.0
Germany	1.3	1.5	0.0	0.0	0.0	0.0	0.0
Iran	0.0	0.0	3.2	38.5	0.0	0.0	-100.0
Latvia	7.2	8.1	0.0	0.0	0.0	0.0	0.0
Libya	2.2	2.5	0.0	0.0	0.0	0.0	0.0
Bangladesh	9.4	10.6	2.9	35.6	0.0	0.0	-100.0
Bulgaria	0.5	0.6	0.0	0.0	0.0	0.0	0.0
Chile	0.3	0.3	0.0	0.0	0.0	0.0	0.0
Estonia	0.1	0.2	0.0	0.0	0.0	0.0	0.0
Georgia	0.0	0.0	0.0	0.1	0.0	0.0	-100.0
Austria	0.0	0.0	0.0	0.0	0.0	0.0	0.0
Spain	0.0	0.0	0.0	0.0	0.0	0.0	-100.0
Switzerland	0.4	0.4	0.0	0.0	0.0	0.0	0.0
Netherlands	0.6	0.7	0.0	0.0	0.0	0.0	0.0
Philippines	15.2	17.2	0.0	0.0	0.0	0.0	0.0

Source: Trade Data Monitor, LLC

**Attachments:**

No Attachments