

USDA Foreign Agricultural Service

# GAIN Report

Global Agricultural Information Network

THIS REPORT CONTAINS ASSESSMENTS OF COMMODITY AND TRADE ISSUES MADE BY  
USDA STAFF AND NOT NECESSARILY STATEMENTS OF OFFICIAL U.S. GOVERNMENT  
POLICY

Required Report - public distribution

**Date:** 6/20/2019

**GAIN Report Number:** UP1929

## Ukraine

### Grain and Feed Update

### Revised MY2019/20 Forecasts

**Approved By:**

Robin Gray, Agricultural Attaché

**Prepared By:**

Denys Sobolev, Agricultural Specialist

**Report Highlights:**

This report contains FAS Kyiv's revised production forecasts for MY2019/20 as well as trade estimates for MY2018/19.

Weather conditions in Ukraine have been favorable for plant growth during the timeframe covered in this report. As a result, Post has revised production volume – increasing estimates for all grains compared with previous estimates in the 2019 Annual Grain Report.

## Production

This report contains FAS Kyiv's revised production forecasts for MY2019/20 as well as trade estimates for MY2018/19. For a more comprehensive outlook of the Ukrainian grain market, please refer to FAS Kyiv's [Annual Grain Report](#).

According to a report from the Ministry of Agricultural Policy and Food of Ukraine (MAPF), as of June 10, 2019, Ukrainian farmers planted the following acreage of spring crops:

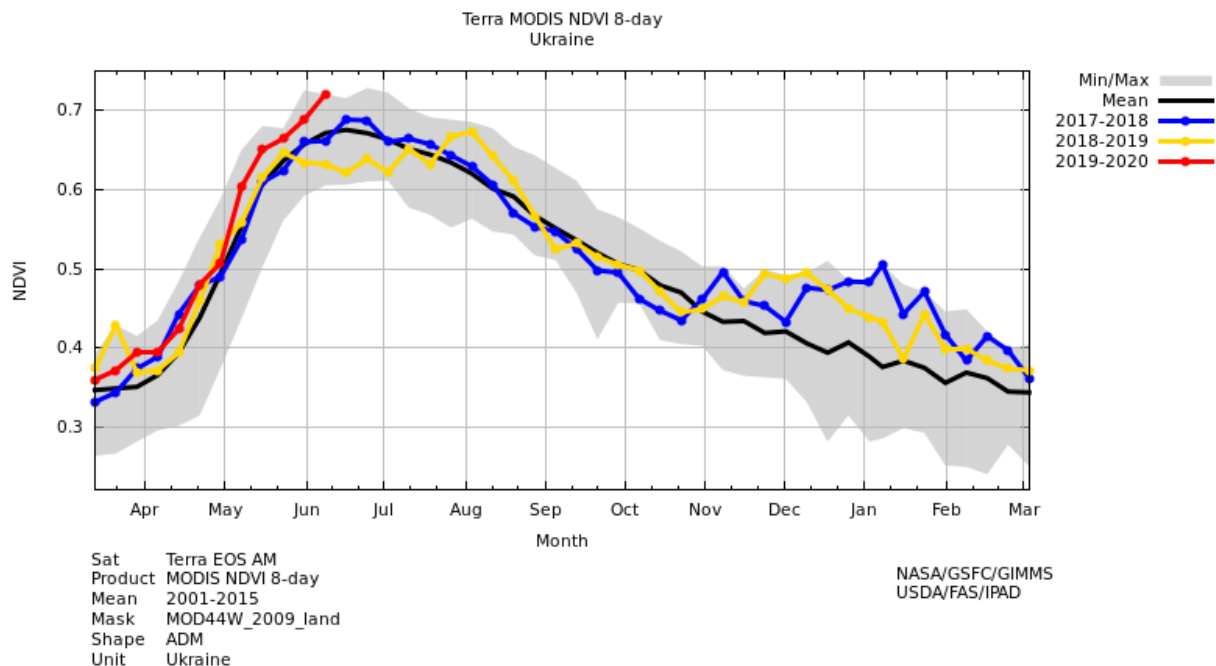
- wheat – 155 thousand hectares (ha), a 14-percent increase compared to crop area planted in 2018;
- barley – approximately 1,490 thousand ha, around a 13-percent increase; and
- corn – 4,760 thousand ha, a four-percent increase.
- MAPF reported no spring rye area in 2019.

This planting data has been added to the winter crop planted area reflected in the [Annual Grain Report](#) in order to estimate the Area Harvested figure included in the Production, Supply and Distribution (PSD) Data section at the end of this report.

According to the information available for FAS Kyiv, 2019-grain production area in Crimea included:

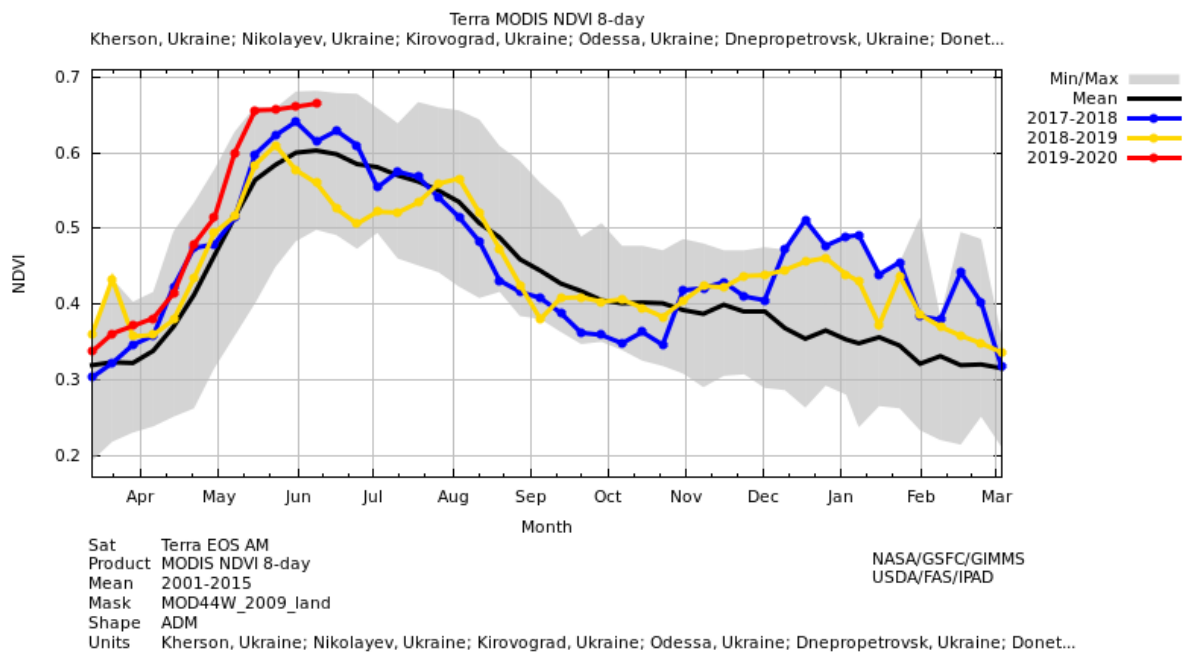
- wheat – 317 thousand ha;
- barley – 152 thousand ha; and
- rye – around 2 thousand ha.

Below is a graph that depicts the Normalized Difference Vegetation Index (NDVI), a standardized measure of healthy vegetation. High NDVI values indicate healthier vegetation. Low NDVI values indicate low or no vegetation. Based on the NDVI graph for Ukraine in general, presented below, FAS Kyiv has concluded that growth conditions for the first half of 2019 were more favorable compared to the two previous years (2018 and 2017).

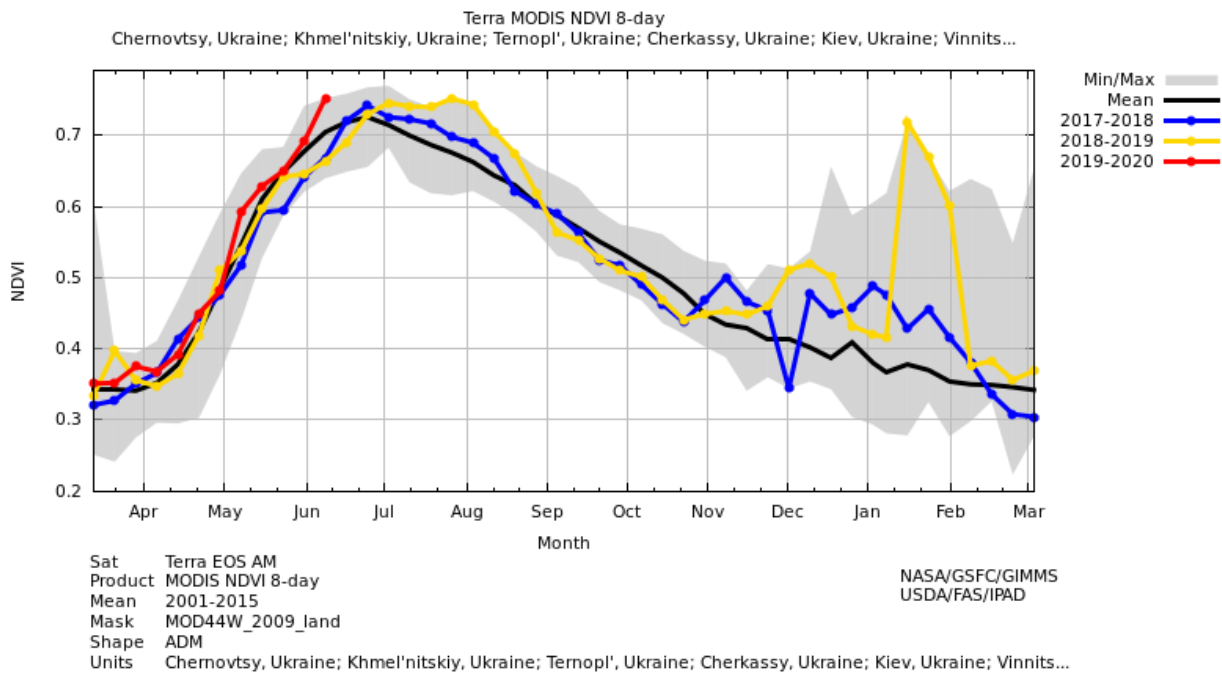


The positive deviation found in the MY2019/20 NDVI index compared to the MY2017/18 and MY2018/19 deviations is more distinctive for the steppe and forest-steppe regions, which are the major grain-producing areas in Ukraine. Please refer to the graphs below for more details.

Steppe:



## Forest-Steppe:



The observance of healthier vegetation is the basis for Post forecasting higher-than-average MY2019/20 yields for all grains in the PSDs. However, it should be noted that favorable growth conditions for plants can also correlate with increased risks of pest and disease outbreaks. Particularly if farmers do not mitigate those risks in a timely manner. FAS Kyiv is monitoring the situation and will adjust yield estimates accordingly.

Using the abovementioned area and yield estimates, FAS Kyiv forecasts MY2019/20 grain production as the following:

- barley – 9.3 million metric tons (MMT), a 22-percent increase compared to the MY2018/19 estimate;
- corn – 33.3 MMT, a seven-percent decrease;
- wheat – approximately 29 MMT, a 16-percent increase; and
- rye – around 345 thousand metric tons (MT), a 12-percent decrease.

## Trade

MY2018/19 trade data in the PSD tables has been updated based on the currently available export/import data, which is included in the “Author Defined” section at the end of this report.

According to the MAPF’s data ([in Ukrainian](#)), as of June 10, 2019, MY2018/19 exports totaled as follows (marketing year began July 2018 for all grains):

- wheat – 15.4 MMT;
- barley – 3.5 MMT;
- corn – 28.6 MMT; and

- rye – 88 thousand MT.

Among the most interesting trends for MY2018/19 grain exports Post notes that:

- Excess corn, resulting from the 2018 bumper crop, is predominantly being exported to the EU and China. During the period October 2018 to March 2019, Ukraine shipped 11.1 MMT to Europe, a 2.2-fold increase compared to the same period the previous year and 2.3 MMT to China a 1.6-fold increase over the previous year.
- Flour exports from Ukraine continue to fall. During the period October 2018 to March 2019, Ukraine exported 224 thousand MT, a 40-percent decrease from the same period of the previous year. The major driver in this decline was a drop in shipments to China (a 62-percent decrease during the aforementioned period), one of the key markets for Ukrainian flour producers. However, it should be mentioned that Ukraine’s flour exports decreased to almost every destination.

### **Consumption and Stocks**

For more information about consumption and stocks of grains in Ukraine, please refer to the relevant sections of the [Annual Grain Report](#). Currently, FAS Kyiv sees no factors that could significantly change either consumption or stocks for both MY2018/19 and MY2019/20.

### **Policy**

Ukraine has adopted a new standard for wheat under which the number of categories for soft wheat has decreased from six to four. For more information, please refer to our [GAIN Report UP1927](#).

According to Ukrainian regulations, different classes of grain should be stored separately, so a decreased number of wheat categories would allow for more efficient usage of storage facilities. In FAS Kyiv’s opinion, these changes likely will not have any significant impact on Ukrainian wheat exports in MY2019/20. However, the new regulations may slightly improve efficiency of inland logistics stemming from lower storage costs both for farmers and for traders.

### **Production, Supply and Distribution Data Statistics**

Estimated wheat flour, pasta and bakery exports/imports have been added to trade volumes for wheat, in wheat grain equivalent, calculated by multiplying the product weight by 1.368.

Post’s grain production numbers include estimated production numbers for the Crimean Peninsula.

#### **Barley:**

Post’s production forecast for MY2019/20 is about three percent higher than USDA’s official number, based on area and yield estimates discussed in the Production section.

Post’s import estimates for both MY2017/18 and MY2018/19 are around 17 percent lower compared to USDA’s official numbers, based on available trade data.

Post's import forecast for MY2019/20 is two-fold higher than USDA's official number following the upward import trend for barley seed during two previous marketing years.

Post's export estimate for MY2018/19 is around five percent lower than USDA's official number, based on available trade data.

Post's feed and residual consumption estimates for MY2017/18 and MY2018/19 are 16 percent higher and seven percent lower, respectively, than USDA's official number, based on total feed estimates discussed in the General Outlook section of the [Annual Grain Report](#).

Post's feed and residual consumption forecast for MY2019/20 is around 17 percent higher than USDA's official number, based on FAS Kyiv's production estimate.

Post's FSI consumption estimate for MY2017/18 is around seven percent lower than USDA's official number, based on relatively stable consumption patterns.

### **Corn:**

MY2018/19: Post's import estimate is 40 percent higher compared to USDA's official number, based on available trade data.

MY2019/20: Post's import forecast is 60 percent higher compared to USDA's official number, based on relatively stable area under this crop.

MY2018/19: Post's export estimate is five percent lower compared to USDA's official number, based on an increased feed estimate reflected in the relevant section of the [Annual Grain Report](#).

MY2019/20: Post's export forecast is six percent lower compared to USDA's official number, based on FAS Kyiv's production estimate.

MY2017/18 and MY2018/19: Post's feed and residual consumption estimates are around two percent and 46 percent higher, respectively, compared to USDA's official numbers. Post's estimates are based on reasons discussed in the Consumption section of the [Annual Grain Report](#).

MY2019/20: Post's feed and residual consumption forecast is 34 percent higher compared to USDA's official number, based on FAS Kyiv's production estimate that suggests an abundance of this crop on the market. This would allow corn to retain its popularity as a feed ingredient among animal producers.

MY2018/19: Post's FSI consumption estimate, as well as the MY2019/20 forecast, are both approximately seven percent lower compared to USDA's official number, based on stable consumption patterns.

**Rye:**

MY2019/20: Post's production forecast is 15 percent higher compared to USDA's official number based on area and yield estimates discussed in the Production section.

MY2018/19: Post's export estimate is around five percent lower compared to USDA's official number based on trade data available to date.

MY2019/20: Post's export forecast is 20 percent lower compared to USDA's official number based on FAS Kyiv's production estimate.

MY2017/18 and MY2018/19: Post's feed and residual estimates are 80 percent lower and 60 percent lower, respectively, compared to USDA's official numbers based on consumption patterns for this crop suggesting minimal feed use.

MY2019/20: Post's feed and residual forecast is 60 percent lower compared to USDA's official number based on consumption patterns for this crop suggesting minimal feed use.

MY2017/18 and MY2018/19: Post's FSI estimates are 13 percent lower and 30 percent higher, respectively, compared to USDA's official numbers. That difference is based on relatively stable, though declining consumption of this crop for baking purposes discussed in the Consumption section of the [Annual Grain Report](#).

**Wheat:**

MY2019/20: Post's production forecast is three percent lower compared to USDA's official number based on area and yield estimates discussed in the Production section.

For MY2017/18 and MY2018/19: Post's wheat import estimates are seven and 30 percent lower, respectively, compared to USDA's official numbers. These estimates are based on available trade data as well as the assumption that domestic consumption of certain bakery and pasta products will demonstrate steady growth without significant spikes.

MY2019/20: Post's import forecast is around six percent lower compared to USDA's official number based on the upward but steady demand trend for imported flour and pasta.

MY2019/20: Post's export forecast is five percent lower compared to USDA's official number based on FAS Kyiv's production estimate.

MY2017/18: Post's feed and residual consumption estimate is three percent higher compared to USDA's official number. The difference is based on crop price differences discussed in the General Outlook section of the [Annual Grain Report](#).

MY2019/20: Post's feed and residual consumption forecast is around seven percent higher compared to USDA's official numbers based on FAS Kyiv's production estimate.

MY2019/20: Post’s FSI consumption forecast is around two percent lower compared to USDA’s official number based on both decreasing population numbers and increasing volumes of imported flour.

Barley Market Begin Year	2017/2018		2018/2019		2019/2020	
	Jul 2017		Jul 2018		Jul 2019	
	USDA Official	New Post	USDA Official	New Post	USDA Official	New Post
Ukraine						
Area Harvested	2652	2687	2569	2496	2650	2650
Beginning Stocks	1237	1237	1149	748	971	950
Production	8695	8695	7604	7587	9000	9275
MY Imports	6	5	18	15	5	10
TY Imports	7	6	18	15	5	10
TY Imp. from U.S.	0	0	0	0	0	0
Total Supply	9938	9937	8771	8350	9976	10235
MY Exports	4289	4289	3800	3600	4500	4500
TY Exports	3188	3188	4200	3600	4500	4500
Feed and Residual	3100	3600	2700	2500	3000	3500
FSI Consumption	1400	1300	1300	1300	1300	1300
Total Consumption	4500	4900	4000	3800	4300	4800
Ending Stocks	1149	748	971	950	1176	935
Total Distribution	9938	9937	8771	8350	9976	10235
Yield	3.2787	3.236	2.9599	3.0397	3.3962	3.5

(1000 HA) ,(1000 MT) ,(MT/HA)

Corn Market Begin Year	2017/2018		2018/2019		2019/2020	
	Oct 2017		Oct 2018		Oct 2019	
	USDA Official	New Post	USDA Official	New Post	USDA Official	New Post
Ukraine						
Area Harvested	4433	4432	4567	4565	4600	4760
Beginning Stocks	1549	1549	1467	1366	1597	906
Production	24115	24114	35805	35805	33000	33320
MY Imports	39	39	25	35	20	32
TY Imports	39	39	25	35	20	32
TY Imp. from U.S.	1	1	0	1	0	1
Total Supply	25703	25702	37297	37206	34617	34258
MY Exports	18036	18036	29500	28000	27000	25400
TY Exports	18036	18036	29500	28000	27000	25400
Feed and Residual	4900	5000	4800	7000	5000	6700
FSI Consumption	1300	1300	1400	1300	1400	1300
Total Consumption	6200	6300	6200	8300	6400	8000
Ending Stocks	1467	1366	1597	906	1217	858



<b>Total Distribution</b>	25703	25702	37297	37206	34617	34258
<b>Yield</b>	5.4399	5.4409	7.8399	7.8434	7.1739	7

(1000 HA) ,(1000 MT) ,(MT/HA)

Rye Market Begin Year	2017/2018		2018/2019		2019/2020	
	Jul 2017		Jul 2018		Jul 2019	
	USDA Official	New Post	USDA Official	New Post	USDA Official	New Post
Ukraine						
<b>Area Harvested</b>	172	172	149	148	110	116
<b>Beginning Stocks</b>	77	77	69	137	65	49
<b>Production</b>	510	510	396	394	300	345
<b>MY Imports</b>	0	0	0	0	0	0
<b>TY Imports</b>	0	0	0	0	0	0
<b>TY Imp. from U.S.</b>	0	0	0	0	0	0
<b>Total Supply</b>	587	587	465	531	365	394
<b>MY Exports</b>	38	38	95	90	50	40
<b>TY Exports</b>	38	84	95	90	50	40
<b>Feed and Residual</b>	10	2	5	2	5	2
<b>FSI Consumption</b>	470	410	300	390	300	300
<b>Total Consumption</b>	480	412	305	392	305	302
<b>Ending Stocks</b>	69	137	65	49	10	52
<b>Total Distribution</b>	587	587	465	531	365	394
<b>Yield</b>	2.9651	2.9651	2.6577	2.6622	2.7273	2.9741

(1000 HA) ,(1000 MT) ,(MT/HA)

Wheat Market Begin Year	2017/2018		2018/2019		2019/2020	
	Jul 2017		Jul 2018		Jul 2019	
	USDA Official	New Post	USDA Official	New Post	USDA Official	New Post
Ukraine						
<b>Area Harvested</b>	6642	6659	6718	6884	7000	6921
<b>Beginning Stocks</b>	1773	1773	1238	1134	1380	950
<b>Production</b>	26981	26981	25057	25056	30000	29068
<b>MY Imports</b>	59	55	85	60	75	70
<b>TY Imports</b>	59	55	85	60	75	70
<b>TY Imp. from U.S.</b>	0	0	0	0	0	0
<b>Total Supply</b>	28813	28809	26380	26250	31455	30088
<b>MY Exports</b>	17775	17775	16200	16500	19500	18500
<b>TY Exports</b>	17775	17775	16200	16500	19500	18500
<b>Feed and Residual</b>	3300	3400	2500	2500	3900	4000
<b>FSI Consumption</b>	6500	6500	6300	6300	6200	6100
<b>Total Consumption</b>	9800	9900	8800	8800	10100	10100

<b>Ending Stocks</b>	1238	1134	1380	950	1855	1488
<b>Total Distribution</b>	28813	28809	26380	26250	31455	30088
<b>Yield</b>	4.0622	4.0518	3.7298	3.6397	4.2857	4.2
(1000 HA) ,(1000 MT) ,(MT/HA)						

**Author Defined:****Barley Export Statistics by Month and Destination, Ukraine, 1000 MT (HS Code 1003)**

Destination	Subtotal Jul 2017- March 2018	Subtotal MY 2017/18	Jul-18	Aug-18	Sep-18	Oct-18	Nov-18	Dec-18	Jan-19	Feb-19	Mar-19	Subtotal Jul 2018- March 2019	% Change Jul 2018- March 2019 to Jul 2017- March 2018
World	4,127.1	4,289.5	592.0	882.0	577.3	673.2	271.1	121.5	120.2	8.2	70.7	3,316.2	80.4
Africa	512.7	536.4	13.8	138.1	63.2	9.0	74.9	33.6	57.3	0.0	63.5	453.5	88.5
Middle East	2,394.8	2,506.4	463.7	451.9	466.0	657.6	192.7	77.8	62.7	7.5	7.2	2,387.0	99.7
South Asia	5.2	5.6	0.3	0.0	0.0	0.0	0.0	0.0	0.0	0.0	0.0	0.3	5.8
East & Southeast Asia	826.6	826.6	104.1	284.3	44.3	0.0	0.0	9.9	0.0	0.6	0.0	443.2	53.6
EU-28	379.7	405.6	10.1	7.5	3.7	6.7	3.5	0.1	0.2	0.2	0.0	32.0	8.4
Eurasian Economic Union	7.9	8.6	0.0	0.1	0.0	0.0	0.0	0.0	0.0	0.0	0.0	0.1	1.3
Algeria	107.3	114.3	6.6	0.0	0.0	0.0	0.0	0.0	0.0	0.0	63.5	70.1	65.3
Israel	130.2	140.7	14.2	3.7	6.3	0.0	0.0	0.0	0.0	4.3	7.2	35.6	27.4
Tunisia	107.8	108.1	0.0	73.4	22.5	0.0	0.0	0.0	0.0	0.0	0.0	95.9	88.9
Turkey	167.6	167.6	2.9	4.0	2.3	0.0	6.3	0.0	0.0	0.0	0.0	15.5	9.3
China	792.4	792.4	66.0	255.9	0.0	0.0	0.0	0.0	0.0	0.0	0.0	321.9	40.6
Cyprus	33.8	45.2	10.0	7.4	0.0	3.3	0.0	0.0	0.0	0.0	0.0	20.6	61.2
Egypt	0.0	0.0	7.2	58.0	0.0	0.0	0.0	3.1	0.0	0.0	0.0	68.3	∞
Japan	34.2	34.2	38.0	28.3	44.3	0.0	0.0	9.9	0.0	0.0	0.0	120.6	352.3
Lebanon	2.7	2.7	0.0	0.0	0.0	4.4	3.4	3.4	0.0	3.2	0.0	14.4	533.9
Libya	253.0	269.4	0.0	6.7	32.4	9.0	74.9	30.6	57.3	0.0	0.0	210.9	83.4
Qatar	96.5	97.1	0.0	20.0	0.0	37.0	13.3	1.0	0.0	0.0	0.0	71.3	73.9
Saudi Arabia	1,712.4	1,813.1	446.6	414.4	457.4	606.3	169.8	65.9	62.7	0.0	0.0	2,223.0	129.8
Other	689.2	704.8	0.5	10.1	12.1	13.3	3.5	7.5	0.2	0.8	0.0	48.0	7.0

Source: State Fiscal Service of Ukraine

## Barley Import Statistics by Month and Country of Origin, Ukraine, MT (HS Code 1003)

Destination	Subtotal Jul 2017- March 2018	Subtotal MY 2017/18	Jul-18	Aug-18	Sep-18	Oct-18	Nov-18	Dec-18	Jan-19	Feb-19	Mar-19	Subtotal Jul 2018- March 2019	% Change Jul 2018- March 2019 to Jul 2017- March 2018
World	4,683	4,715	3,221	2,392	182	2	0	1,319	4,188	3,334	120	14,758	315.1
EU-28	775	807	234	314	182	2	0	11	48	90	120	1,001	129.2
Eurasian Economic Union	437	437	2,987	2,078	0	0	0	1,308	4,140	3,244	0	13,757	3148.1
Czech Republic	273	276	0	117	48	0	0	0	44	71	44	324	118.7
France	252	257	0	0	3	0	0	0	4	0	39	46	18.3
Germany	151	171	25	195	76	2	0	11	0	17	22	348	230.5
Austria	15	19	2	2	22	0	0	0	0	1	16	43	286.7
Belarus	434	434	0	0	0	0	0	0	0	0	0	0	0.0
Belgium	0	0	0	0	0	0	0	0	0	0	0	0	∞
Denmark	0	0	0	0	0	0	0	0	0	0	0	0	∞
Hungary	73	73	0	0	28	0	0	0	0	0	0	28	38.4
Moldova	3,470	3,470	0	0	0	0	0	0	0	0	0	0	0.0
Netherlands	0	0	0	0	0	0	0	0	0	0	0	0	∞
Poland	13	13	207	0	4	0	0	0	0	0	0	211	1623.1
Russia	3	3	2,987	2,078	0	0	0	1,308	4,140	3,244	0	13,757	458566.7

Source: State Fiscal Service of Ukraine

## Corn Export Statistics by Month and Destination, Ukraine, 1000 MT (HS Code 1005)

Destination	Subtotal Oct 2017 - Mar 2018	Subtotal MY 2017/18	Oct-18	Nov-18	Dec-18	Jan-19	Feb-19	Mar-19	Subtotal Oct 2018 - Mar 2019	% Change Oct 2018 - Mar 2019 to Oct 2017 - Mar 2018
World	10,926.2	18,035.6	1,347.6	3,118.7	3,260.7	3,378.3	3,742.9	3,772.7	18,620.9	170.4
EU-28	5,135.4	8,342.7	1,063.5	2,076.0	2,535.9	1,964.8	1,668.0	1,840.4	11,148.5	217.1
East & Southeast Asia	1,442.1	2,783.2	52.8	580.3	264.9	242.3	602.3	814.9	2,557.5	177.3
Middle East	1,594.4	3,418.5	41.6	174.8	179.4	377.1	569.8	568.1	1,910.8	119.8
Africa	2,650.4	3,379.3	157.9	262.1	275.5	710.5	884.4	516.7	2,807.0	105.9
Eurasian Economic Union	3.0	4.5	0.1	0.4	3.9	18.3	16.6	32.2	71.5	2413.2
South Asia	99.8	105.9	2.5	24.2	1.1	65.0	1.7	0.0	94.5	94.7
China	1,440.5	2,780.3	49.8	510.6	264.3	241.5	468.0	742.4	2,276.6	158.0
Spain	1,025.5	1,619.0	319.4	728.7	762.6	582.0	398.5	482.7	3,273.8	319.2
Egypt	1,854.3	2,416.3	31.8	116.0	150.3	588.5	643.3	385.5	1,915.4	103.3
Netherlands	1,351.1	2,462.1	210.0	472.8	685.6	558.9	352.7	354.1	2,634.1	195.0
Turkey	692.2	1,039.9	35.1	78.7	25.7	103.3	378.8	306.4	928.1	134.1
Portugal	485.5	717.4	26.1	26.1	80.4	115.6	121.9	204.8	574.9	118.4
Germany	173.5	287.2	188.6	283.0	236.2	78.3	188.7	203.5	1,178.3	679.3
Italy	1,171.4	1,725.4	93.0	265.4	232.3	186.2	147.4	196.6	1,120.9	95.7
Ireland	299.4	332.4	32.7	27.8	63.8	128.1	125.5	180.0	557.9	186.4
Iran	90.1	1,245.8	0.0	0.0	0.0	0.0	0.0	161.3	161.3	179.1
Tunisia	480.0	563.5	27.1	56.1	30.1	91.9	85.0	88.4	378.5	78.9
Korea South	0.0	1.2	0.0	69.6	0.3	0.8	134.2	72.5	277.3	∞
United Kingdom	184.7	254.2	59.3	90.2	98.5	64.6	58.9	72.2	443.7	240.2
Israel	773.7	1,007.9	0.0	63.8	128.5	227.2	97.4	60.9	577.8	74.7
Belgium	293.5	558.4	0.0	92.2	110.6	54.5	92.6	51.0	401.0	136.6
Lebanon	36.8	123.2	6.5	32.3	25.1	46.0	24.9	38.8	173.5	471.8
Belarus	2.8	4.3	0.1	0.4	3.9	18.3	16.5	32.1	71.3	2519.8
Libya	271.0	353.1	99.0	80.1	93.2	0.0	87.4	30.7	390.4	144.0
Lithuania	20.2	52.2	10.9	46.1	42.9	86.3	43.8	30.6	260.7	1293.2
Poland	28.4	76.5	13.6	26.1	21.2	32.0	16.2	23.9	133.0	467.9
France	0.1	4.4	24.1	4.1	23.6	39.6	0.0	22.0	113.4	206180.0
Algeria	30.2	30.2	0.0	0.0	0.0	30.0	68.0	11.1	109.1	361.3
Cyprus	38.4	63.4	8.1	2.7	11.6	0.0	11.2	5.5	39.0	101.6
Denmark	3.5	69.5	62.4	3.6	151.3	35.6	100.3	0.0	353.2	10095.6
India	0.0	0.0	0.0	0.0	0.0	65.0	1.7	0.0	66.6	∞
United Arab Emirates	0.0	0.0	0.0	0.0	0.1	0.1	67.7	0.0	67.9	∞
Other	179.5	247.8	50.1	42.3	18.6	4.0	12.5	15.6	143.0	79.7

Source: State Fiscal Service of Ukraine

## Corn Import Statistics by Month and Country of Origin, Ukraine, MT (HS Code 1005)

Destination	Subtotal Oct 2017 - Mar 2018	Subtotal MY 2017/18	Oct-18	Nov-18	Dec-18	Jan-19	Feb-19	Mar-19	Subtotal Oct 2018 - Mar 2019	% Change Oct 2018 - Mar 2019 to Oct 2017 - Mar 2018
World	32,337	38,933	234	3,093	5,725	4,002	9,038	7,467	29,559	91.4
EU-28	29,273	34,466	147	2,843	5,496	3,930	7,597	6,908	26,921	92.0
Romania	9,418	10,706	103	2,329	3,336	1,315	2,508	2,406	11,997	127.4
Hungary	7,452	8,969	1	494	1,529	2,067	2,351	1,855	8,297	111.3
France	6,443	7,928	28	19	418	505	1,359	1,512	3,841	59.6
Switzerland	4,284	4,820	0	0	74	0	911	519	1,504	35.1
Serbia	1,740	2,201	0	0	68	59	1,290	435	1,852	106.4
Austria	597	752	0	1	89	0	91	404	585	98.0
Germany	700	719	1	0	0	0	5	115	121	17.3
United States	374	1,222	83	250	62	0	125	62	582	155.6
Slovakia	226	241	13	0	49	24	274	39	399	176.5
Croatia	47	122	0	0	0	20	98	23	141	300.0
Bulgaria	16	38	0	0	0	0	0	23	23	143.8
Turkey	823	832	0	0	100	0	0	22	122	14.8
Belarus	29	49	0	0	0	0	0	21	21	72.4
Chile	47	54	0	0	0	13	0	17	30	63.8
Spain	91	94	0	0	0	0	0	12	12	13.2
New Zealand	15	20	0	0	0	0	0	1	1	6.7
Mexico	0	2	0	0	0	0	0	0	0	∞
Poland	0	15	0	0	0	0	0	0	0	∞
Argentina	30	39	5	0	0	0	26	0	31	103.3
Greece	0	0	0	0	0	0	0	0	0	∞
Canada	0	3	0	0	0	0	0	0	0	∞
Senegal	0	2	0	0	0	0	0	0	0	∞
Moldova	10	20	0	0	0	0	0	0	0	0.0
India	0	1	0	0	0	0	0	0	0	∞
Lithuania	0	65	0	0	0	0	0	0	0	∞
South Africa	0	25	0	0	0	0	0	0	0	∞

Source: State Fiscal Service of Ukraine

## Wheat Export Statistics by Month and Destination, Ukraine, 1000 MT (HS Code 1001)

Destination	Subtotal Jul 2017 - Mar 2018	Subtotal MY 2017/18	Jul-18	Aug-18	Sep-18	Oct-18	Nov-18	Dec-18	Jan-19	Feb-19	Mar-19	Subtotal Jul 2018 - Mar 2019	% Change Jul 2018 - Mar 2019 to Jul 2017 - Mar 2018
World	13,405.2	17,154.8	940.2	2,171.5	2,259.0	2,187.1	1,852.9	1,098.9	1,011.9	971.9	891.7	13,384.9	99.8
Africa	3,991.7	5,918.3	259.2	453.4	596.7	742.6	735.5	363.9	509.4	412.8	386.4	4,459.8	111.7
East & Southeast Asia	4,239.5	5,228.5	355.0	1,259.3	1,052.4	1,043.1	762.3	516.6	193.6	159.0	257.0	5,598.3	132.1
Middle East	1,469.4	2,003.5	214.9	213.1	61.3	175.9	168.4	97.1	165.4	141.4	103.4	1,340.9	91.3
South Asia	1,954.4	2,067.5	4.3	88.9	260.1	118.4	117.9	109.6	120.2	114.5	70.8	1,004.6	51.4
EU-28	1,520.9	1,626.4	106.5	156.7	241.9	106.2	32.7	10.8	21.6	132.8	52.8	862.0	56.7
Eurasian Economic Union	0.0	5.3	0.0	0.1	0.0	0.0	0.0	0.7	1.1	6.9	10.1	18.8	∞
Indonesia	1,756.1	2,282.8	116.9	524.0	426.2	343.0	499.4	196.8	52.9	4.6	186.0	2,349.9	133.8
Egypt	1,324.2	1,951.3	74.8	127.0	112.6	161.5	112.8	63.0	165.8	230.6	183.6	1,231.8	93.0
Morocco	742.0	944.0	55.7	14.0	13.5	171.6	285.3	172.7	169.7	66.9	88.6	1,038.0	139.9
Tunisia	605.5	972.1	27.5	154.3	62.8	91.0	70.7	77.3	109.4	56.4	83.1	732.4	121.0
Bangladesh	1,444.7	1,557.8	4.3	88.9	260.1	118.4	117.8	109.6	120.1	114.3	70.4	1,003.8	69.5
Thailand	540.6	720.0	59.2	88.5	125.7	57.4	80.7	75.9	130.8	74.0	58.8	751.0	138.9
Turkey	449.7	480.2	18.2	22.8	10.5	73.0	6.2	18.3	57.4	66.3	57.9	330.6	73.5
Italy	285.6	371.9	52.1	34.4	5.6	0.0	0.0	0.0	7.3	86.0	40.4	225.7	79.0
Israel	420.9	590.3	103.1	73.7	38.2	66.4	52.1	12.4	59.0	14.3	33.9	453.1	107.7
Libya	232.7	353.6	11.8	65.9	147.7	80.0	87.2	50.9	64.4	26.0	31.0	564.8	242.7
Lebanon	278.1	396.0	15.4	60.8	12.6	36.5	28.0	16.4	18.4	60.8	11.6	260.4	93.6
Malaysia	93.8	109.7	5.1	47.8	7.6	46.8	7.6	10.3	5.1	11.1	10.3	151.6	161.5
United Kingdom	3.2	3.2	0.0	32.6	3.1	0.0	0.0	5.1	0.0	0.0	2.4	43.2	1370.2
Netherlands	83.7	84.8	3.2	32.6	81.3	8.9	13.4	0.9	9.9	1.3	1.5	152.9	182.6
Korea South	785.1	985.1	54.6	258.7	141.4	205.6	0.0	0.2	0.0	62.5	0.5	723.5	92.2
Philippines	1,027.8	1,090.9	90.7	320.0	329.7	388.2	173.6	233.2	4.6	6.9	0.0	1,546.7	150.5
Sudan	57.9	71.3	22.9	0.0	55.4	0.0	0.0	0.0	0.0	33.0	0.0	111.3	192.2
Portugal	0.0	0.0	0.0	0.0	0.0	30.9	0.0	0.0	0.0	0.0	0.0	30.9	∞
Senegal	135.7	202.0	45.2	0.9	29.8	6.3	2.0	0.0	0.0	0.0	0.0	84.1	62.0
South Africa	142.2	153.2	0.0	0.0	0.0	54.9	0.0	0.0	0.0	0.0	0.0	54.9	38.6
Spain	1,078.1	1,078.1	50.7	49.9	146.2	55.0	11.1	0.0	0.0	0.0	0.0	312.9	29.0
Mauritania	233.9	424.5	0.0	0.0	62.7	12.2	36.6	0.0	0.0	0.0	0.0	111.5	47.7
Mexico	216.1	281.7	0.3	0.0	45.8	0.0	36.0	0.0	0.0	0.0	0.0	82.1	38.0
Nigeria	76.0	107.2	0.0	0.0	44.4	45.0	0.0	0.0	0.0	0.0	0.0	89.4	117.7
Cote d Ivoire	37.3	55.3	5.4	0.0	13.9	17.7	4.8	0.0	0.0	0.0	0.0	41.8	111.9
Djibouti	81.7	135.8	4.5	0.0	0.0	0.0	54.9	0.1	0.0	0.0	0.0	59.5	72.8
Ireland	0.0	0.0	0.0	0.0	0.0	0.0	0.0	0.0	0.0	30.4	0.0	30.4	∞
Japan	31.8	31.8	27.9	19.4	21.7	0.0	0.0	0.0	0.0	0.0	0.0	69.1	217.5
Jordan	107.3	108.0	0.0	0.0	0.0	0.0	61.6	0.0	0.0	0.0	0.0	61.6	57.4
Kenya	122.0	191.2	0.0	42.0	36.8	48.7	67.2	0.0	0.0	0.0	0.0	194.8	159.7
Guinea	0.0	0.0	0.0	34.2	0.0	0.0	0.0	0.0	0.0	0.0	0.0	34.2	∞
Yemen	212.0	406.2	78.0	55.6	0.0	0.0	0.0	50.0	30.5	0.0	0.0	214.2	101.0
Uganda	0.0	13.8	0.0	2.0	4.0	16.8	10.5	0.0	0.0	0.0	0.0	33.3	∞
Other	799.6	1,001.0	12.9	21.6	19.6	51.4	33.4	6.0	6.5	26.8	31.4	209.6	26.2

Source: State Fiscal Service of Ukraine

## Wheat Flour and Products Export Statistics by Month and Destination, Ukraine, MT (HS Codes 1101, 190219, 190230, 190240)

Destination	Subtotal Jul 2017 - Mar 2018	Subtotal MY 2017/18	Jul-18	Aug-18	Sep-18	Oct-18	Nov-18	Dec-18	Jan-19	Feb-19	Mar-19	Subtotal Jul 2018 - Mar 2019	% Change Jul 2018 - Mar 2019 to Jul 2017 - Mar 2018
World	373,439	453,091	19,021	17,115	17,592	20,752	29,809	29,879	24,271	31,140	35,137	224,716	60.2
Africa	67,584	74,266	794	1,128	675	1,309	3,706	5,272	5,301	5,117	7,778	31,080	46.0
East & Southeast Asia	139,454	167,954	5,377	4,402	4,944	7,063	12,613	10,033	7,314	11,305	6,475	69,526	49.9
EU-28	30,391	34,040	1,713	1,631	1,179	1,368	1,524	1,680	1,180	3,063	1,211	14,549	47.9
Eurasian Economic Union	7,353	9,101	777	893	695	767	676	536	349	734	925	6,352	86.4
Middle East	61,717	82,184	5,368	2,602	3,137	2,203	3,746	5,468	5,582	6,833	8,820	43,759	70.9
South Asia	38	38	0	0	0	0	0	0	0	0	0	0	0
United Arab Emirates	35,311	46,029	2,431	458	0	245	1,719	3,411	3,528	4,343	5,788	21,923	62.1
Palestine	24,758	31,215	1,808	2,728	3,199	4,185	3,831	3,920	2,083	1,056	4,223	27,033	109.2
Moldova	27,237	36,721	3,082	3,726	3,666	3,533	2,746	2,630	2,419	2,872	3,573	28,247	103.7
Somalia	11,135	11,397	240	186	0	0	1,142	1,333	949	2,200	3,463	9,513	85.4
China	105,394	124,822	3,867	2,296	3,038	4,557	5,869	7,530	4,856	4,234	3,425	39,672	37.6
Singapore	14,098	20,517	1,461	2,106	1,901	2,506	6,700	2,503	2,458	7,071	2,856	29,562	209.7
Rwanda	0	0	0	0	0	0	0	0	0	0	1,519	1,519	∞
Israel	19,032	24,616	1,626	1,219	2,840	1,505	1,665	927	1,352	1,185	1,422	13,741	72.2
Lebanon	2,463	4,374	601	539	187	48	145	730	582	376	1,288	4,496	182.5
Marshall Islands	1	1	0	0	0	0	0	0	0	0	960	960	96000.0
Madagascar	48	48	0	0	0	0	0	1,700	969	917	882	4,468	9308.3
Angola	31,740	33,324	0	46	0	144	508	192	0	336	588	1,814	5.7
Belarus	3,727	4,865	322	426	171	383	346	379	216	342	547	3,132	84.0
Venezuela	1,454	1,755	0	0	0	146	121	337	0	143	528	1,275	87.7
Ghana	634	634	0	0	0	0	0	0	1,012	72	432	1,516	239.1
Russia	3,564	4,173	454	467	524	384	330	157	133	380	378	3,207	90.0
United Kingdom	20,796	21,611	717	552	186	162	432	144	232	1,984	277	4,686	22.5
Tanzania	384	624	0	74	144	490	245	245	1,163	980	245	3,586	933.9
Sierra Leone	1,975	2,847	146	269	387	49	0	0	147	49	243	1,290	65.3
Myanmar	1,562	3,822	0	0	0	0	0	0	0	0	242	242	15.5
Germany	2,021	2,619	174	178	240	254	319	281	190	182	224	2,042	101.0
Kenya	0	120	0	169	0	0	662	1,372	659	0	192	3,054	∞
Romania	1,539	1,818	118	263	100	207	184	92	154	244	154	1,516	98.5
Lithuania	715	1,181	122	125	143	131	87	94	107	86	107	1,002	140.1
Latvia	648	934	79	55	60	67	78	83	78	87	104	691	106.6
Qatar	405	600	0	196	48	144	0	146	48	121	98	801	197.8
Oman	145	145	0	0	0	0	0	144	0	288	95	527	363.4
Spain	1,283	1,608	185	76	153	157	143	48	162	158	92	1,174	91.5
Georgia	2,323	3,138	1	16	48	151	114	8	73	462	64	937	40.3
Hungary	442	639	49	149	37	51	54	34	45	54	35	508	114.9
Bulgaria	307	416	36	44	44	73	34	274	41	46	25	617	201.0
Benin	1,412	1,773	143	0	48	97	143	190	192	0	0	813	57.6
Albania	1,803	1,803	0	0	0	144	816	0	0	0	0	960	53.2
Cote d'Ivoire	100	100	0	0	0	480	240	0	0	0	0	720	720.0
Djibouti	576	1,331	0	240	0	0	480	0	48	466	0	1,234	214.2
Togo	1,186	2,135	96	145	48	0	0	240	115	48	0	692	58.3
Syria	62	895	637	98	0	0	0	0	0	0	0	735	1185.5
Other	53,165	58,445	624	272	378	460	659	737	262	359	1,070	4,821	9.1

Source: State Fiscal Service of Ukraine

**Wheat Flour and Products Import Statistics by Month and Country of Origin, Ukraine, MT**  
(HS Codes 1101, 190219, 190230, 190240)

Destination	Subtotal Jul 2017 - Mar 2018	Subtotal MY 2017/18	Jul-18	Aug-18	Sep-18	Oct-18	Nov-18	Dec-18	Jan-19	Feb-19	Mar-19	Subtotal Jul 2018 - Mar 2019	% Change Jul 2018 - Mar 2019 to Jul 2017 - Mar 2018
World	27,418	37,297	4,145	4,960	3,858	5,268	4,597	5,299	2,892	2,893	3,240	37,152	135.5
Africa	416	634	0	17	108	0	23	138	40	0	81	407	97.8
East & Southeast Asia	362	565	62	91	45	143	75	88	128	79	117	828	228.7
EU-28	14,312	18,815	2,272	2,498	2,301	2,739	2,849	2,678	1,668	2,052	2,050	21,107	147.5
Eurasian Economic Union	4,649	7,131	1,201	1,064	781	1,029	648	922	356	60	140	6,201	133.4
Middle East	7,602	10,042	601	1,283	622	1,350	986	1,467	688	699	849	8,545	112.4
Italy	8,751	11,525	1,482	1,640	1,316	1,761	2,058	1,882	1,167	1,186	1,181	13,673	156.2
Turkey	7,602	9,897	601	1,283	622	1,350	986	1,467	688	699	849	8,545	112.4
Poland	4,508	5,856	683	723	899	818	612	640	453	702	682	6,212	137.8
Tunisia	200	418	0	17	0	0	20	138	40	0	81	296	148.0
Russia	684	822	99	90	0	118	57	79	20	0	78	541	79.1
China	206	330	18	54	26	100	52	21	97	56	66	490	237.9
Belarus	3,963	6,306	1,102	974	781	911	591	844	337	60	62	5,662	142.9
Hungary	354	456	37	41	22	47	22	38	19	48	62	336	94.9
Latvia	182	297	0	36	19	40	76	36	0	40	59	306	168.1
Vietnam	89	158	25	31	17	16	17	58	29	23	51	267	300.0
France	296	382	61	31	19	52	59	36	12	45	45	360	121.6
Germany	46	68	2	8	8	0	10	17	9	11	10	75	163.0
Netherlands	26	34	2	2	1	3	1	10	2	2	9	32	123.1
United States	48	80	0	4	1	8	16	6	3	3	2	43	89.6
Finland	39	59	2	2	5	10	1	8	0	9	1	38	97.4
Lithuania	20	23	2	0	0	2	0	1	0	0	0	5	25.0
Thailand	64	71	19	6	0	12	5	9	2	0	0	53	82.8
Brazil	0	0	9	0	0	0	0	0	9	0	0	18	∞
Bulgaria	3	7	0	0	0	0	0	0	2	0	0	2	66.7
Czech Republic	23	23	0	0	0	0	0	1	0	0	0	1	4.3
Egypt	216	216	0	0	108	0	0	0	0	0	0	108	50.0
Jordan	0	145	0	0	0	0	0	0	0	0	0	0	∞
Korea South	0	3	0	0	0	15	0	0	0	0	0	15	∞
Greece	46	62	2	3	10	0	9	3	0	8	0	35	76.1
India	0	0	0	0	0	0	0	0	0	0	0	0	∞
Switzerland	9	9	0	10	0	6	0	6	3	0	0	25	277.8
Other	39	42	0	2	4	0	3	0	0	0	0	9	23.1

Source: State Fiscal Service of Ukraine



## Rye Export Statistics by Month and Destination, Ukraine, MT (HS Code 1002)

Destination	Subtotal Jul 2017 - Mar 2018	Subtotal MY 2017/18	Jul-18	Aug-18	Sep-18	Oct-18	Nov-18	Dec-18	Jan-19	Feb-19	Mar-19	Subtotal Jul 2018 - Mar 2019	% Change Jul 2018 - Mar 2019 to Jul 2017 - Mar 2018
World	27,630	37,851	7,414	13,955	27,061	14,482	4,426	12,932	5,227	2,323	611	88,431	320.1
EU-28	19,895	26,666	1,486	6,664	26,914	7,563	3,616	3,387	1,962	2,032	611	54,235	272.6
Eurasian Economic Union	446	446	60	406	90	0	0	0	0	0	0	556	124.7
Middle East	1,187	4,637	0	22	0	2,896	0	3,374	0	290	0	6,582	554.5
South Asia	0	0	0	6,048	57	0	0	0	3,265	0	0	9,370	∞
Africa	6,098	6,098	0	0	0	1,375	811	0	0	0	0	2,186	35.8
East & Southeast Asia	0	0	5,868	562	0	2,647	0	6,170	0	0	0	15,247	∞
Poland	12,683	18,745	1,486	3,433	12,787	5,281	2,307	3,091	1,588	1,590	396	31,959	252.0
Germany	110	110	0	0	69	396	629	0	18	17	215	1,344	1221.8
Moldova	4	4	0	0	0	0	0	0	0	0	0	0	0.0
Netherlands	0	0	0	0	0	43	462	102	0	0	0	607	∞
Philippines	0	0	5,868	562	0	2,647	0	6,170	0	0	0	15,247	∞
South Africa	25	25	0	0	0	0	0	0	0	0	0	0	0.0
Spain	4,599	4,599	0	0	0	0	0	0	0	0	0	0	0.0
Switzerland	396	396	0	0	44	0	22	66	243	0	0	375	94.7
Tunisia	6,073	6,073	0	0	0	0	0	0	0	0	0	0	0.0
Israel	1,187	4,637	0	22	0	2,896	0	3,374	0	290	0	6,582	554.5
Latvia	0	0	0	1,578	4,840	458	196	129	0	0	0	7,201	∞
Libya	0	0	0	0	0	1,375	811	0	0	0	0	2,186	∞
Lithuania	1,638	2,347	0	1,653	9,045	1,363	0	0	0	0	0	12,061	736.3
Austria	165	165	0	0	0	22	0	0	0	0	0	22	13.3
Bangladesh	0	0	0	6,048	57	0	0	0	3,265	0	0	9,370	∞
Belarus	446	446	60	406	90	0	0	0	0	0	0	556	124.7
Bulgaria	0	0	0	0	0	0	0	0	113	426	0	539	∞
Chile	0	0	0	253	0	0	0	0	0	0	0	253	∞
Czech Republic	88	88	0	0	0	0	0	0	0	0	0	0	0.0
Estonia	218	218	0	0	130	0	0	0	0	0	0	130	59.6

Source: State Fiscal Service of Ukraine