



United States
Department of
Agriculture

Foreign
Agricultural
Service

Circular Series
WAP 12-24
December 2024

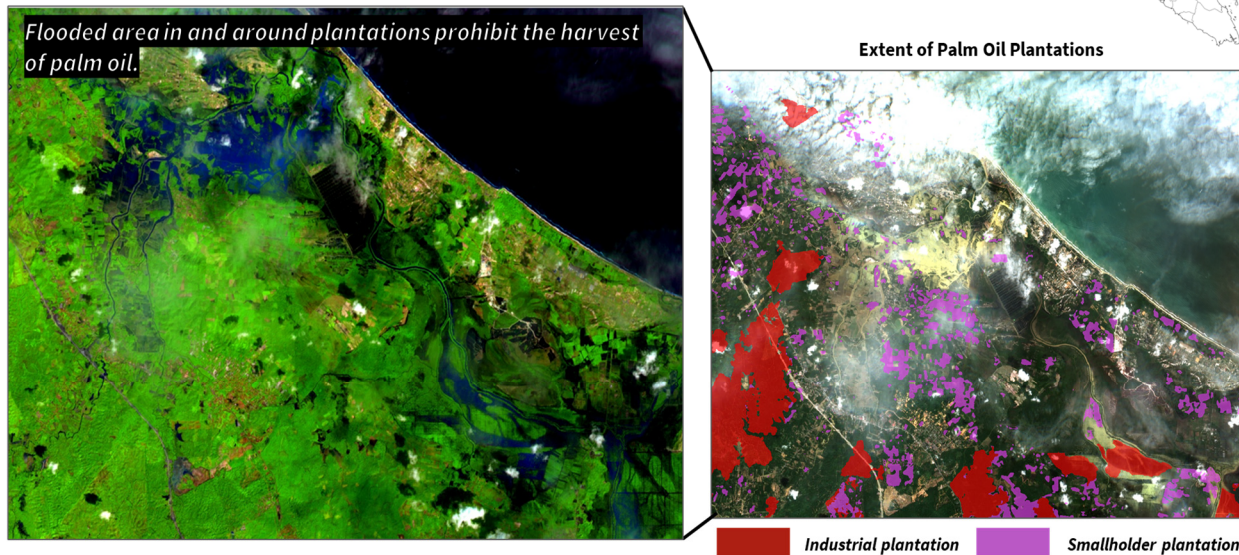
World Agricultural Production

Malaysia Palm Oil: Production Reduced due to Heavy Rainfall in November

USDA estimates marketing year (MY) 2024/25 Malaysia palm oil production at 19.3 million metric tons, down 3 percent from last month and 2 percent from last year. Harvested area is estimated at 5.6 million hectares, unchanged from last month, but up 1 percent from the previous year. Yield is estimated at 3.45 tons per hectare, down 3 percent from last month and last year.

Terengganu, Malaysia: Flooded Areas, False Color Visualization & True Color Visualization

Image Date: 12/03/2024 Image Center: (102.80, 5.556)



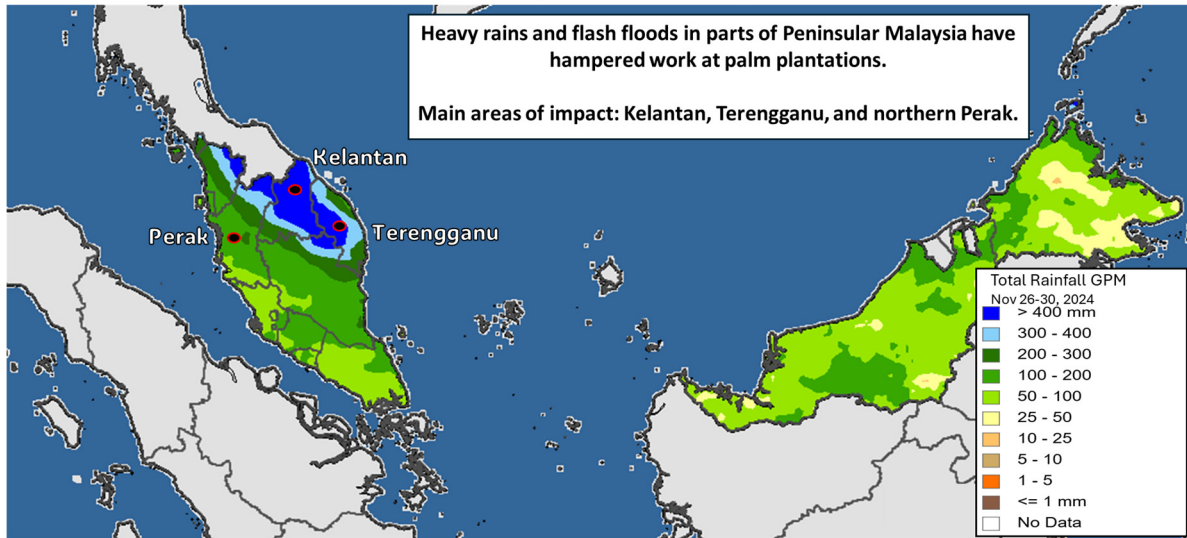
Bands Used: SWIR-1, NIR, Red

Source: Copernicus Sentinel-2 Data 2024, 10m

A reported six months of rain occurred in five days in late November throughout Peninsular Malaysia which led to widespread flooding in the region. Although most of the heavy rain was observed in the north, flooding was reported in other parts of the region as well. In total, nine states in Peninsular Malaysia were impacted from the rain event. As a result, palm oil harvest operations and logistics were impeded.

Approved by the World Agricultural Outlook Board

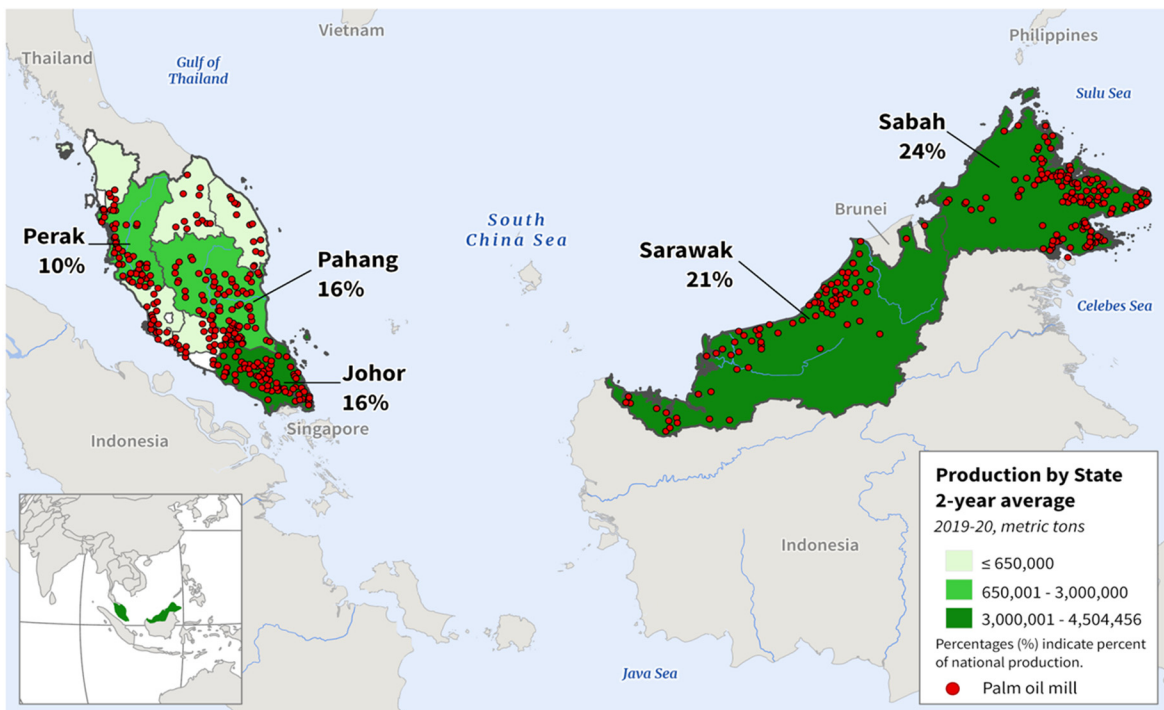
Heavy Rains Impact Palm Oil Operations



Source: NASA IMERG-GPM Total Rainfall

Malaysia is the second largest producer of palm oil in the world, accounting for almost 25 percent of global production. Palm oil is produced throughout most of the peninsula, but production is mainly achieved in the central and southern parts of the region. States that were heavily impacted by the extreme rainfall were Kelantan, Terengganu, and northern Perak, where roughly 5 percent of palm oil output is produced. Delays in palm oil harvest will directly impact monthly crude palm oil (CPO) output.

Malaysia: Palm Oil Production



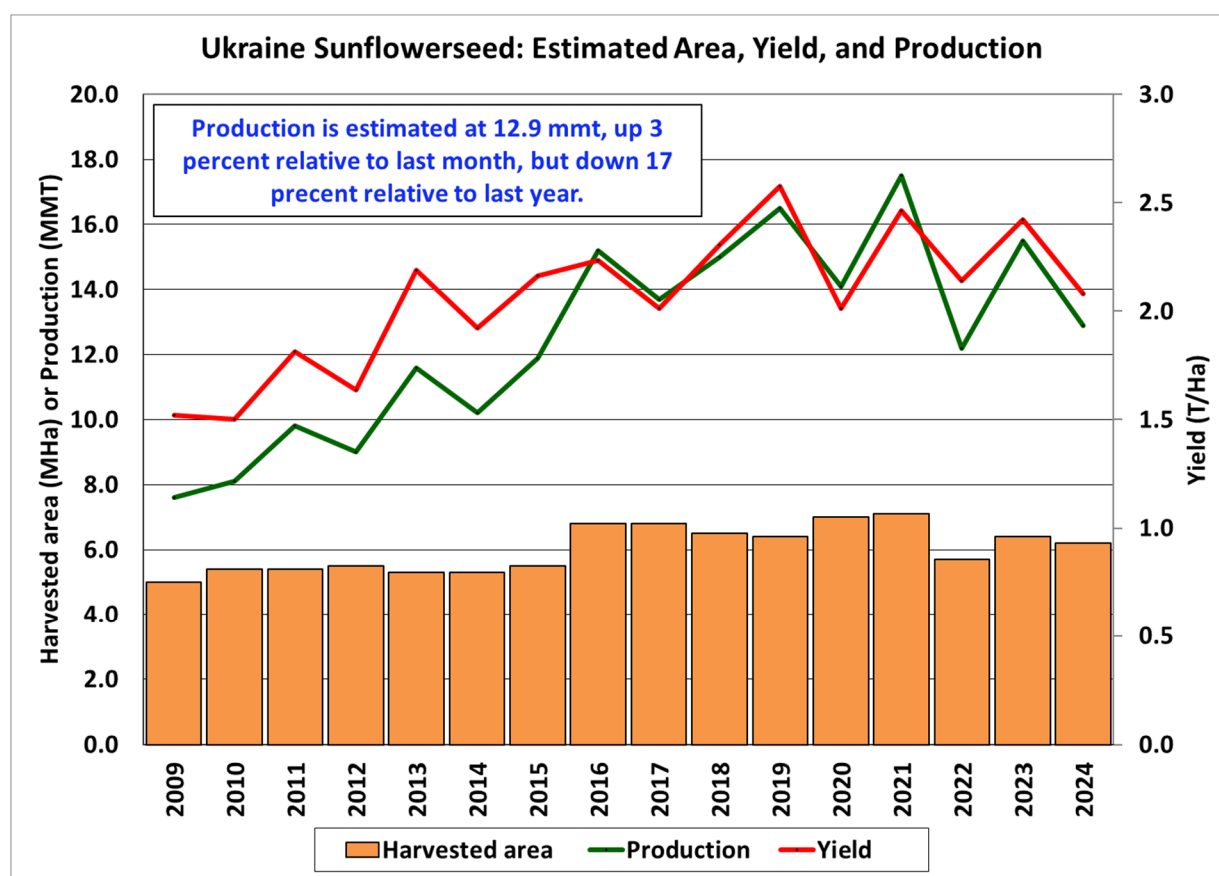
USDA Foreign Agricultural Service
U.S. DEPARTMENT OF AGRICULTURE

Sources: Malaysian Palm Oil Board Statistics,
Global Forest Watch Palm Oil Mills

In addition to the recent heavy rainfall, the Malaysian Palm Oil Board estimate in the October report indicates CPO output is down 6 percent from last year and down 2 percent from the 5-year average. October is the highest CPO producing month, followed by September then August. USDA began its MY 2024/25 for Malaysia palm oil in October 2024. (For more information, please contact Justin.Jenkins@usda.gov.)

Ukraine Sunflowerseed: Harvest Reports Indicate Higher Yields Than Expected

Ukraine sunflowerseed production for marketing year (MY) 2024/25 is estimated at 12.9 million metric tons (mmt), up 3 percent from last month, but down 17 percent from last year. Yield is estimated at 2.08 tons per hectare, up 3 percent from last month, but down 14 percent from last year. Harvested area is estimated at 6.2 million hectares, unchanged from last month and down 3 percent from last year. Ukraine is the world's second largest producer of sunflowerseed, accounting for almost 25 percent of global production.



Sources: USDA PSD Online

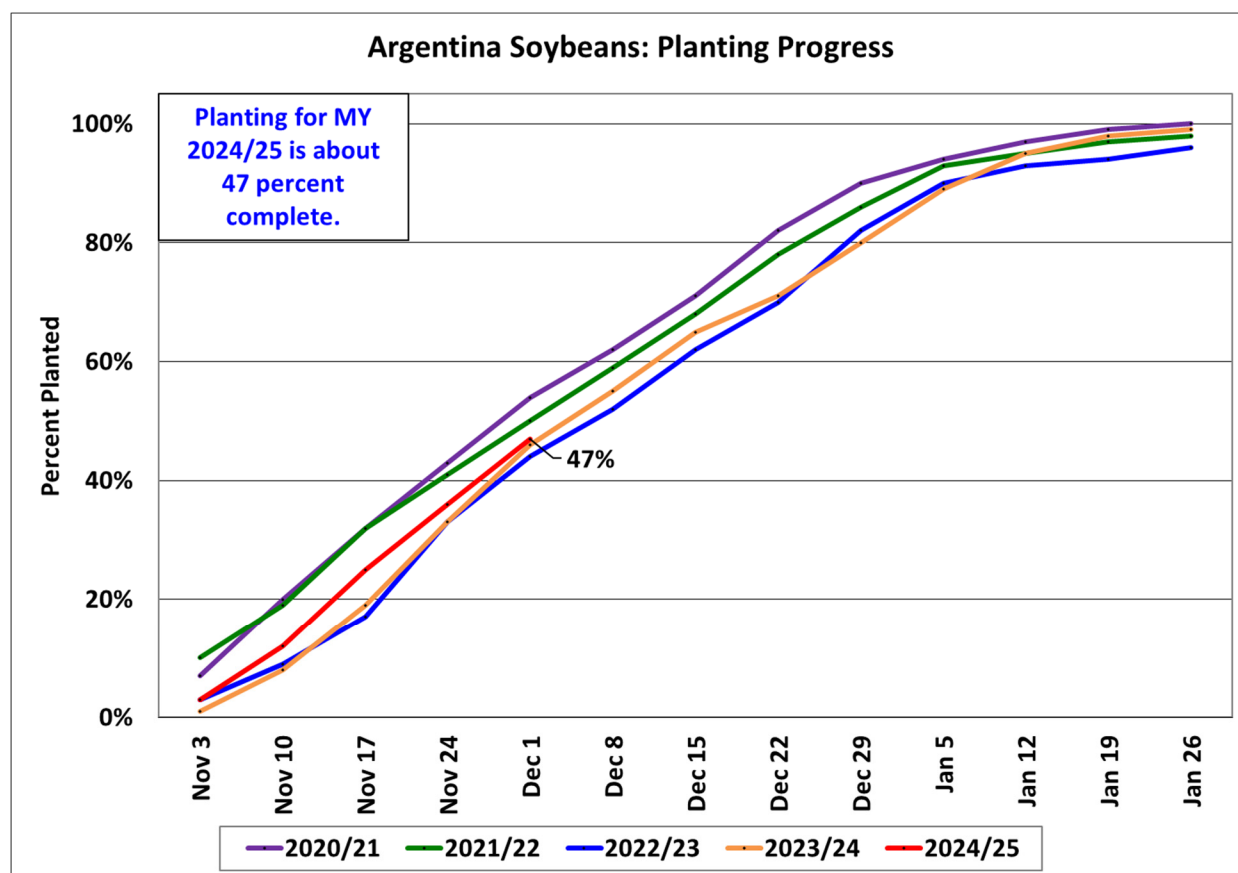
At present, Ukraine can be divided into two zones, areas in conflict and areas not in conflict. As elaborated by FAS/Kyiv in Ukraine, due to the ongoing war there is no official and reliable information about the status of Ukraine’s agriculture in the conflict zone. As a result, area and production data currently provided by FAS/Kyiv, Ukraine’s Ministry of Agriculture (MinAg), and the State Statistical Service of Ukraine, which inform USDA’s forecasts, do not reflect the whole country. For the MY 2024/25 season the MinAg operational field data for both the MY 2024/25

winter and spring crops do not cover the temporarily occupied territory of the Donetsk, Zaporizhzhia, Luhansk and Kherson regions. MinAg also does not include Crimea. USDA crop production estimates for Ukraine include estimated output from Crimea. Crimean area and production numbers are extracted from the agricultural crop reports provided by the Russian Statistical Agency, Rosstat.

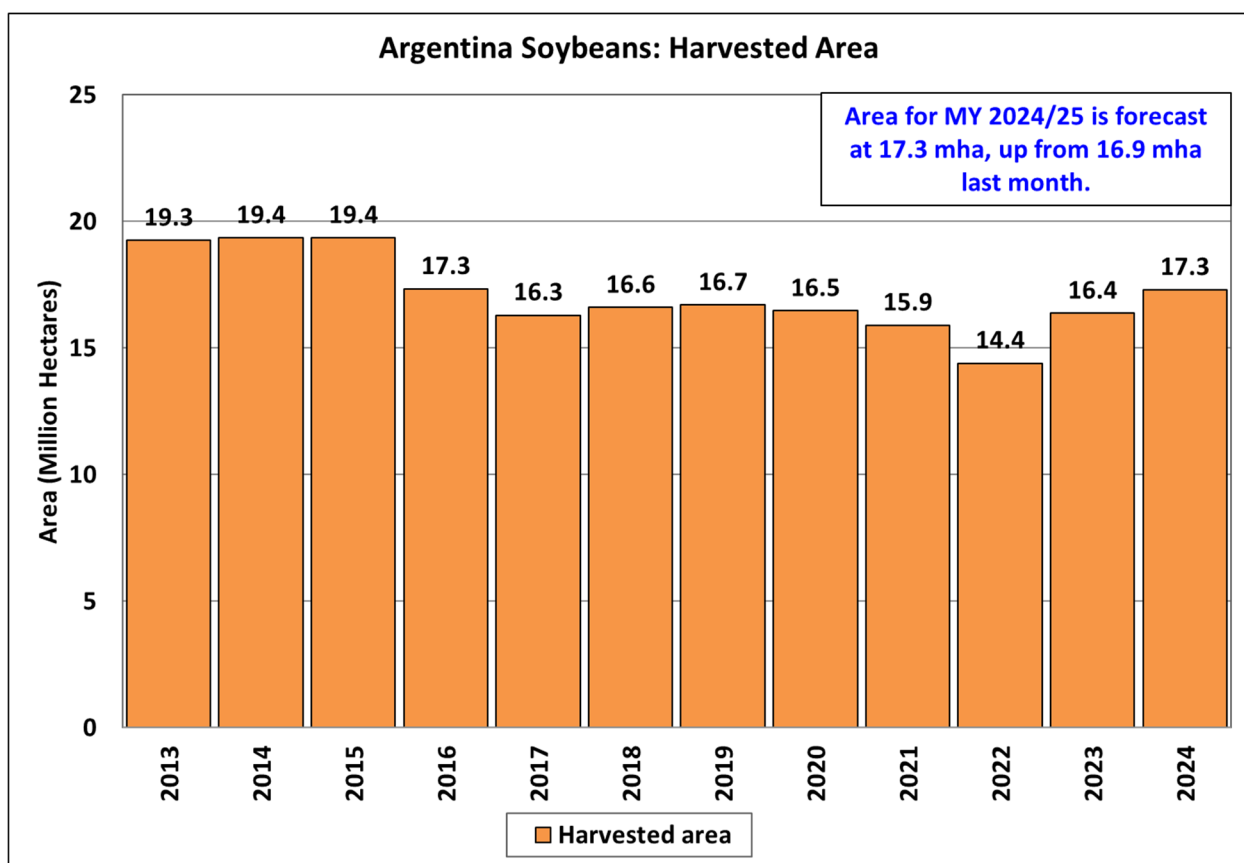
This month's increase in production is based on the official operational harvest data released by the Ministry of Agriculture of Ukraine. Based on MinAg, harvest is about 97 percent complete as of November 28. MinAg reports higher than initially anticipated yield for the MY 2024/25 crop; the agency, however, cites yield that is lower year-over-year, which is consistent with the overall challenging growing conditions this season. *(For more information, please contact Iliana.Mladenova@usda.gov.)*

Argentina Soybeans: Planting Halfway Complete; Increased Harvested Area Forecast

Argentina soybean production for marketing year (MY) 2024/25 is forecast at 52.0 million metric tons, up 2 percent from last month and 8 percent from last year. Soybean yield is forecast at 3.01 tons per hectare (t/ha), essentially unchanged from last month, and up 2 percent from last year's yield. Harvested area is forecast at 17.3 million hectares, up 2 percent from last month and 6 percent from last year. Argentina is the world's third largest producer of soybeans, accounting for 12 percent of global production.



Source: Argentina Ministry of Agriculture



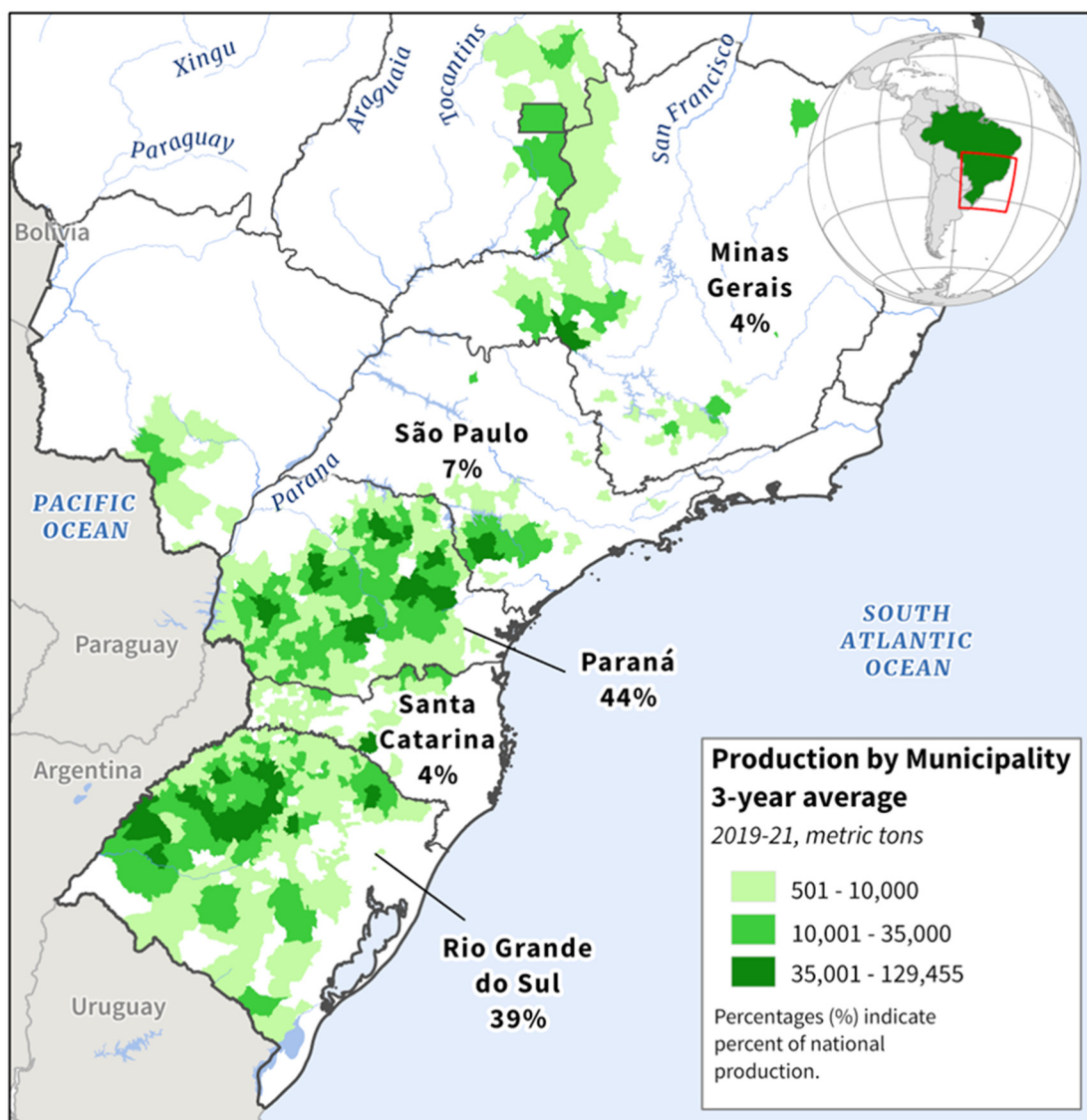
Source: USDA PSD Online

The Argentina Ministry of Agriculture published an updated planted area forecast of 17.9 mha. This summer crop season is unique as many farmers are changing normal crop rotation patterns. Corn area is expected to fall with the continued issues of the leafhopper insect, or *chicharrita*, which causes corn stunt disease. This decrease in corn area has led to an increase in soybean planted area since the two commodities typically are grown in similar locations. Sowing of late planted corn will begin in earnest in December and any areas not planted to corn are expected to be planted to other crops, with soybeans as the main replacement. As of the end of November, soybean planting is about 47 percent complete and will continue through January. (For more information, please contact Katie.McGaughey@usda.gov.)

Brazil Wheat: Lower Yields in Paraná Offset Year-to-Year Gains in Rio Grande do Sul

USDA estimates Brazil wheat production for marketing year (MY) 2024/25 at 8.1 million metric tons (mmt), down 5 percent from last month, and nearly unchanged from last year and 7 percent above the 5-year average. Harvested area is estimated at 3.0 million hectares, unchanged from last month, down 14 percent from last year, but 10 percent above the 5-year average. Yield is estimated at 2.70 tons per hectare, down 5 percent from last month and 2 percent below the 5-year average. However, yield is up 16 percent from last year's poor crop that suffered from excessive rainfall in Rio Grande do Sul.

Brazil: Wheat Production

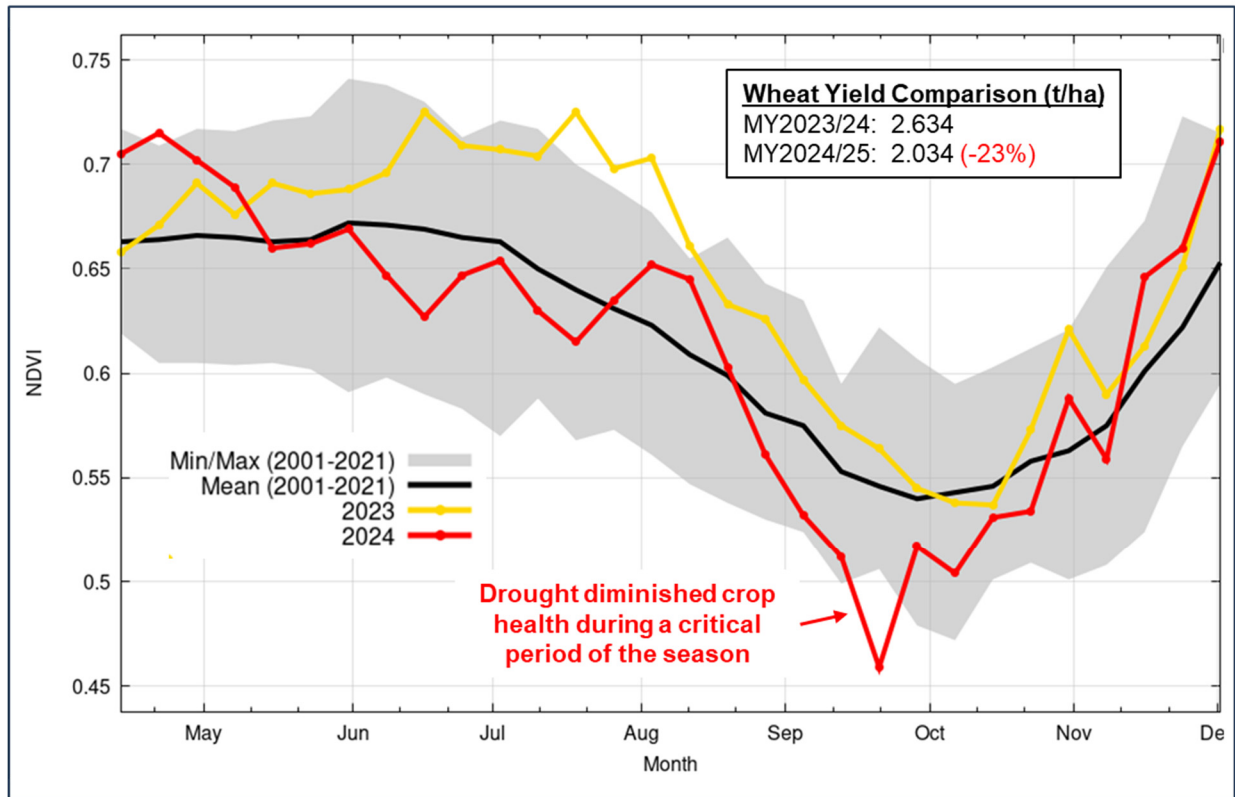


USDA Foreign Agricultural Service
U.S. DEPARTMENT OF AGRICULTURE

Source: IBGE - Produção Agrícola Municipal

Wheat yields were much improved this year in Rio Grande do Sul, Brazil’s largest wheat producing state, as weather conditions normalized following the previous season’s excessive rainfall brought on by an El Niño cycle. With El Niño Southern Oscillation (ENSO) neutral conditions throughout most of the season, yields were up 78 percent and production increased 57 percent, year-to-year, according to the state agency EMATER/RS. Production is expected to reach 4.1 mmt in the state.

Paraná Wheat: Vegetation Health (NDVI)



Sources: USDA/NASA GLAM, MODIS Terra 8-day NDVI; IFPRI SPAM Wheat Crop Mask; Yield data from DERAL

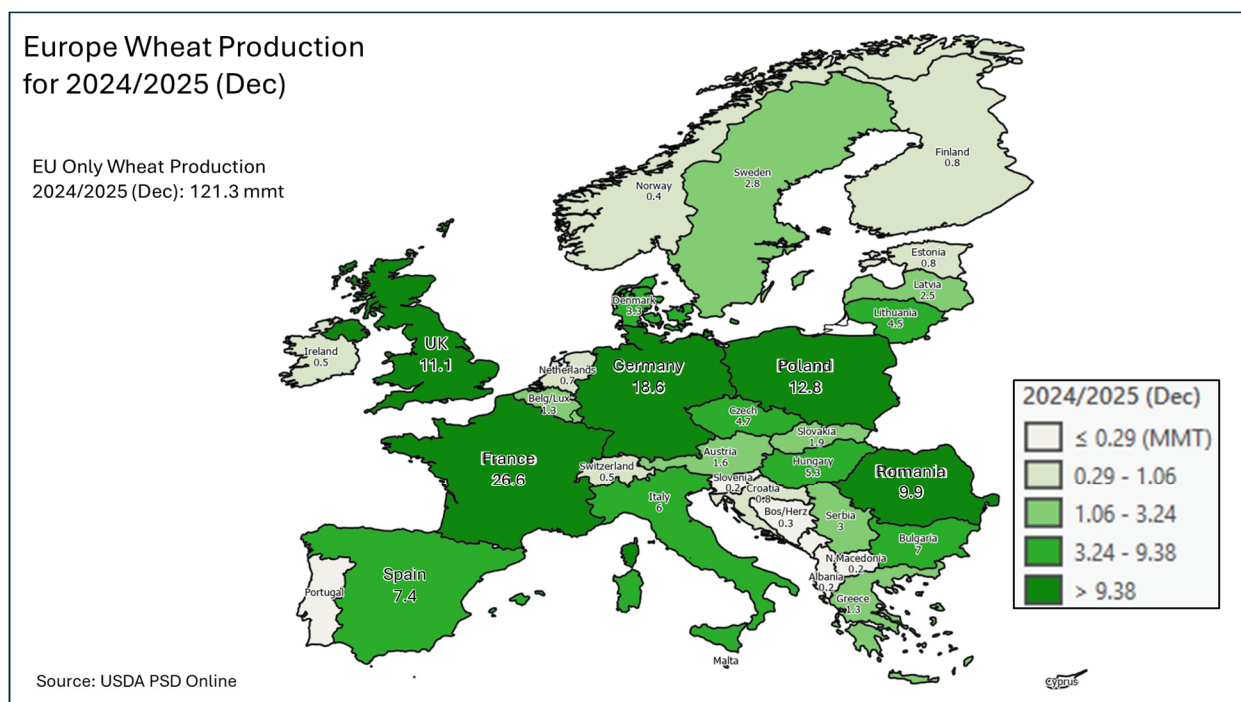
Drought in Paraná, Brazil's second-largest wheat producing state, reduced yields significantly. DERAL, the state agricultural agency, estimates a 23 percent year-to-year reduction in yields and a 37 percent reduction in production. Satellite-derived Normalized Difference Vegetation Index (NDVI) analysis indicates that vegetation health in wheat areas in Paraná declined sharply during critical reproductive stages of the growing season. Yield losses in Paraná effectively cancel gains in Rio Grande do Sul, resulting in national production similar to last year. (For more information, please contact Aaron.Mulhollen@usda.gov.)

European Union Wheat: Production Reduced Based on Harvest Results

Wheat production in the European Union (EU) for marketing year (MY) 2024/25 is estimated at 121.3 million metric tons (mmt), down 1.3 mmt from last month and 10 percent below last year and the 5-year average. Harvested area is estimated at 22.8 million hectares (mha), down 66,000 hectares (ha) from last month, down 6 percent from last year and 5 percent from the 5-year average. Yield is estimated at 5.31 tons per hectare (t/ha), below last month's 5.35 t/ha and 4 percent below last year's estimate. The EU is the world's second largest producer of wheat, accounting for 15 percent of global production.

The wheat harvest has been finished for months, but additional reductions have been made as recent data has revealed further evidence of the crop's sub-par performance. MY 2024/25 EU wheat production is the lowest since MY 2012/13. The biggest reductions in the EU this month include Belgium, Sweden, Denmark, Netherlands, and Italy. France, consistently the EU's largest

wheat producer, had particularly unfavorable weather this year with constant and excessive rains throughout the season. Production in France is estimated at 26.6 mmt, lower than MY 2016/17, when similar conditions significantly reduced the harvest and crop quality. France’s wheat harvest hasn’t been this low since MY 1983/84.



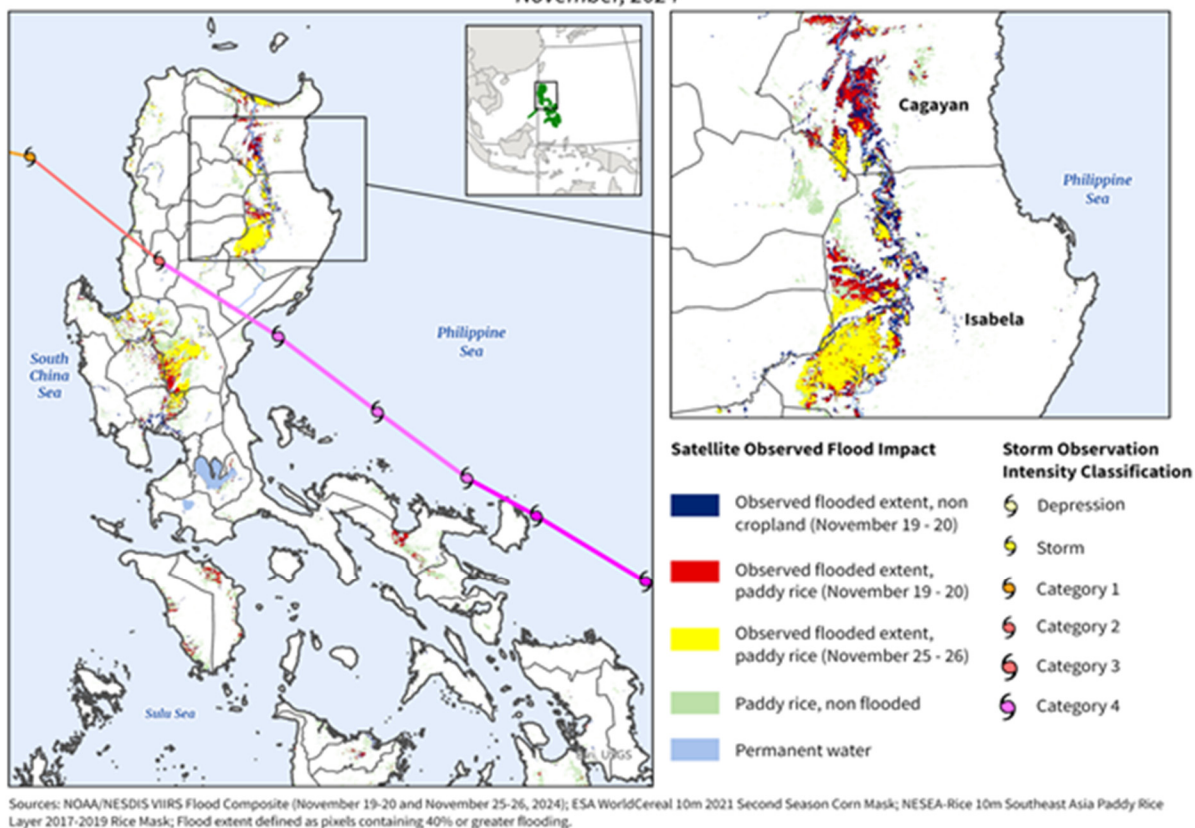
For country-specific area, yield, and production estimates within the EU, please go to PSD Online at <https://apps.fas.usda.gov/PSDOnline/app/index.html#/app/home>, and select “Downloadable Data Sets.” Select the zipped file for “EU Countries Area & Production.” (For more information, please contact Bryan.Purcell@usda.gov.)

Philippines Rice: Production Reduced Based on Multiple Typhoons in November

USDA estimates marketing year (MY) 2024/25 rice production at 12.0 million metric tons (milled basis), down 2 percent from last month and 3 percent from last year. Harvested area is estimated at 4.6 million hectares, down 2 percent from last month and 3 percent from last year. Yield (rough basis) is estimated at 4.14 tons per hectare, down less than 1 percent from last month, but slightly up from last year.

Philippines: Typhoon Man-yi Flood Impact on Rice

November, 2024



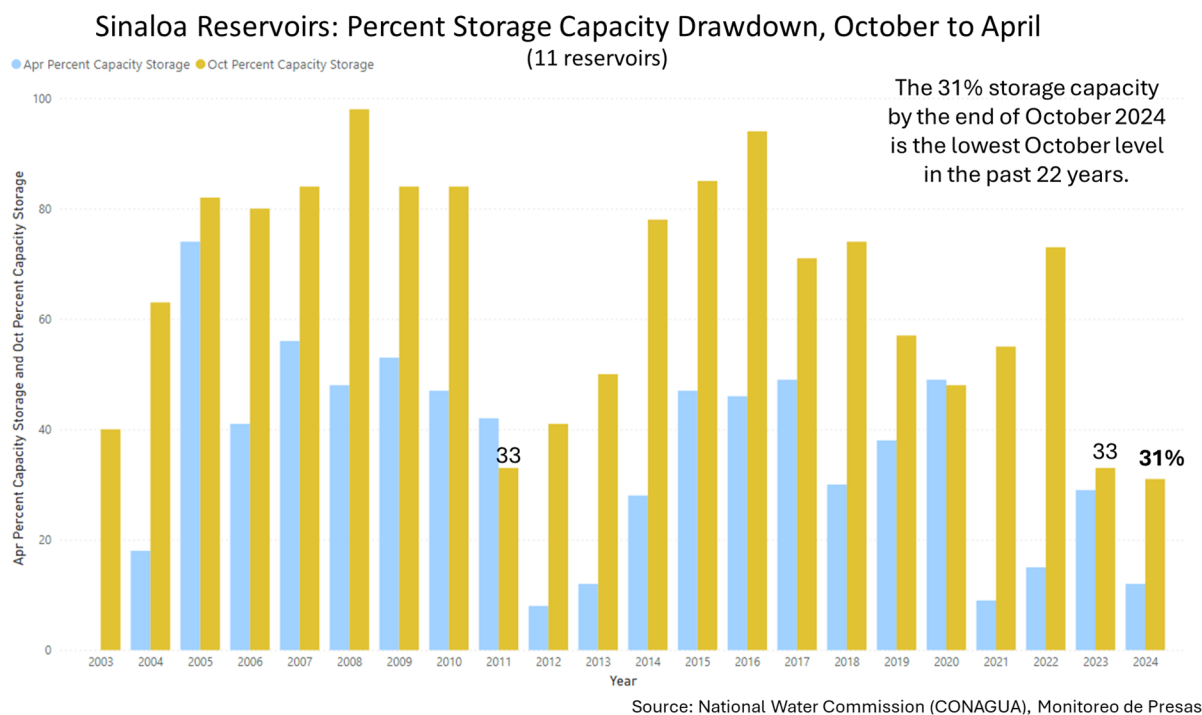
Flood impacts on rice from Typhoon Man-yi, one of the six typhoons that hit the region.

An active typhoon season resulted in six storms hitting the Philippines in the month of November, impacting rice production in the fourth quarter. Though most of them did not make direct landfall, high winds and torrential rainfall impacted rice in the region, most notably in the Ilocos, Cagayan Valley and Central Luzon rice producing regions. These three regions combined account for roughly half of the fourth quarter rice output. Local reports indicated widespread flooding across the region that led to rice fields being inundated. Though rice is a hardy crop and can withstand short periods of flooding, area and yield impacts are more probable in extended periods of inundation. Remotely-sensed flood analysis validated the extent of flooded rice fields from the field reports. The preliminary extent of damage assessments was confirmed by the FAS/Manila, in wake of the multiple storm events. Rice in the Philippines is cultivated throughout the year and is reported quarterly. USDA's MY begins with the third quarter, July through September. The highest rice outputs are produced in the fourth and first quarters, which represent about 38 and 23 percent of total production, respectively. *(For more information, please contact Justin.Jenkins@usda.gov.)*

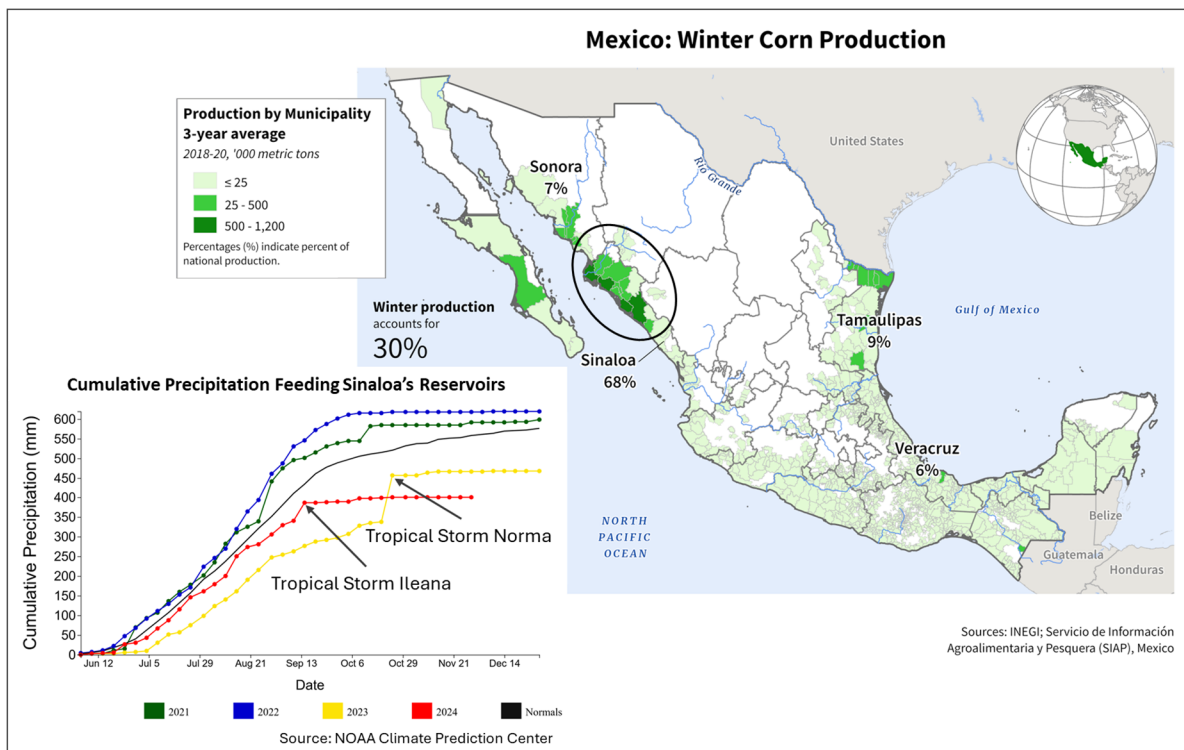
Mexico Corn: Lower Irrigation Water Availability Threatens Crop Prospects

USDA estimates Mexico corn production for marketing year (MY) 2024/25 at 23.7 million metric tons, down 800,000 metric tons or 3 percent from last month and 10 percent from the 5-year average, yet up 1 percent from last year's drought-affected crop. Harvested area is estimated at 6.1 million hectares, down 3 percent from last month, unchanged from last year, and down 10 percent from the 5-year average. Yield is estimated at 3.89 tons per hectare, unchanged from last month, slightly down from the 5-year average, but up 1 percent from last year.

The reduction in output is attributed to low reservoir levels due to persistent dryness and high temperatures, especially in the northwest of Mexico. The low water levels in Sinaloa are jeopardizing fall/winter corn crop prospects resulting in lower estimates as the planting season begins. In October, the reservoirs in Sinaloa were at 31 percent storage capacity, the lowest October levels in the past 22 years, and reservoir storage has continued to decrease since October. Other examples of similarly low October reservoir levels were in MY 2023/24 and MY 2011/12, when corn production was also reduced. Irrigation is heavily used in Sinaloa, and the fall/winter corn crop is produced during Mexico's dry season, November to April.

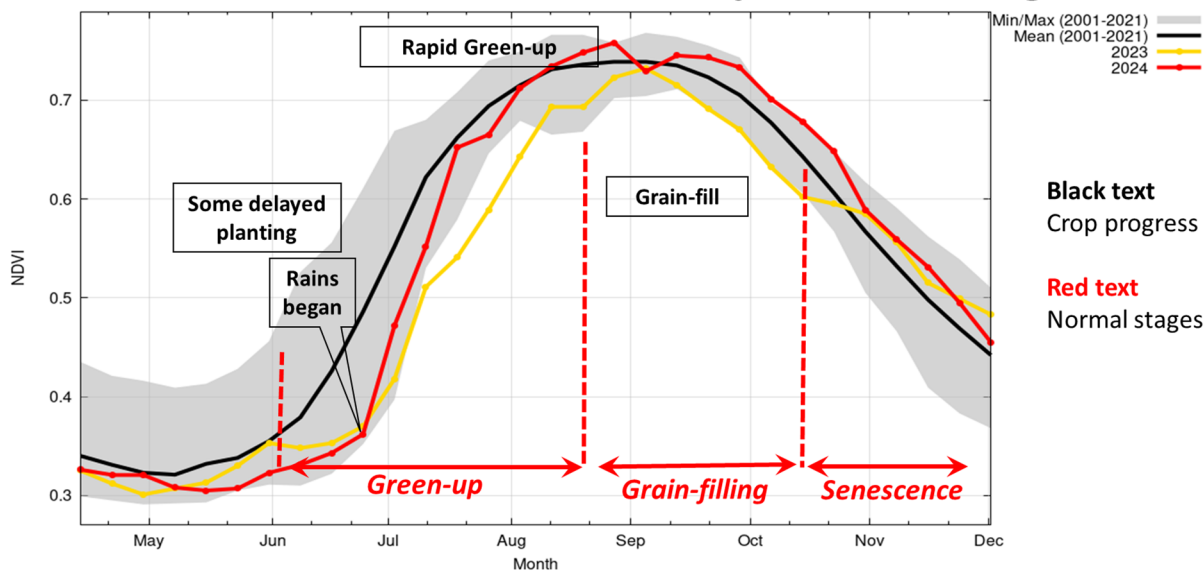


The fall/winter corn season typically accounts for 30 percent of annual production, with 68 to 72 percent from Sinaloa. When the season is drier, this breakdown between Sinaloa and other winter corn-producing states can change. For example, in the drought-afflicted MY 2023/24, an estimated 64 percent of the winter corn crop was produced in Sinaloa. That year, Tropical Storm Norma provided a late recharge of the reservoirs in October that was viewed as largely saving the crop. This year, the much smaller Tropical Storm Ileana provided some much-needed rain in mid-September, but no additional storms reached Sinaloa in October or November. For the fall/winter crop, most of the planting begins in November and harvest is from mid-April through July.



Although the prospects for Mexico's winter corn are not promising, the results from the summer season have been better than in MY 2023/24. The spring/summer corn season for MY 2024/25, with 70 percent of annual production, had a delayed start until late June and then experienced improved weather conditions for the remainder of the season. The satellite-derived Normalized Difference Vegetation Index (NDVI) shows improved crop conditions over last year in the major rainfed region covering the states of Jalisco, Mexico, Michoacán, and Guanajuato.

Mexico: Summer Corn NDVI in Key Rain-fed Region



Coverage: Corn Croplands in Jalisco, State of Mexico, Michoacán, and Guanajuato

Source: NASA/GIMMS & USDA/FAS/IPAD Global Agricultural Monitor (GLAM); ASRC Federal Sentinel-2-derived Corn Mask

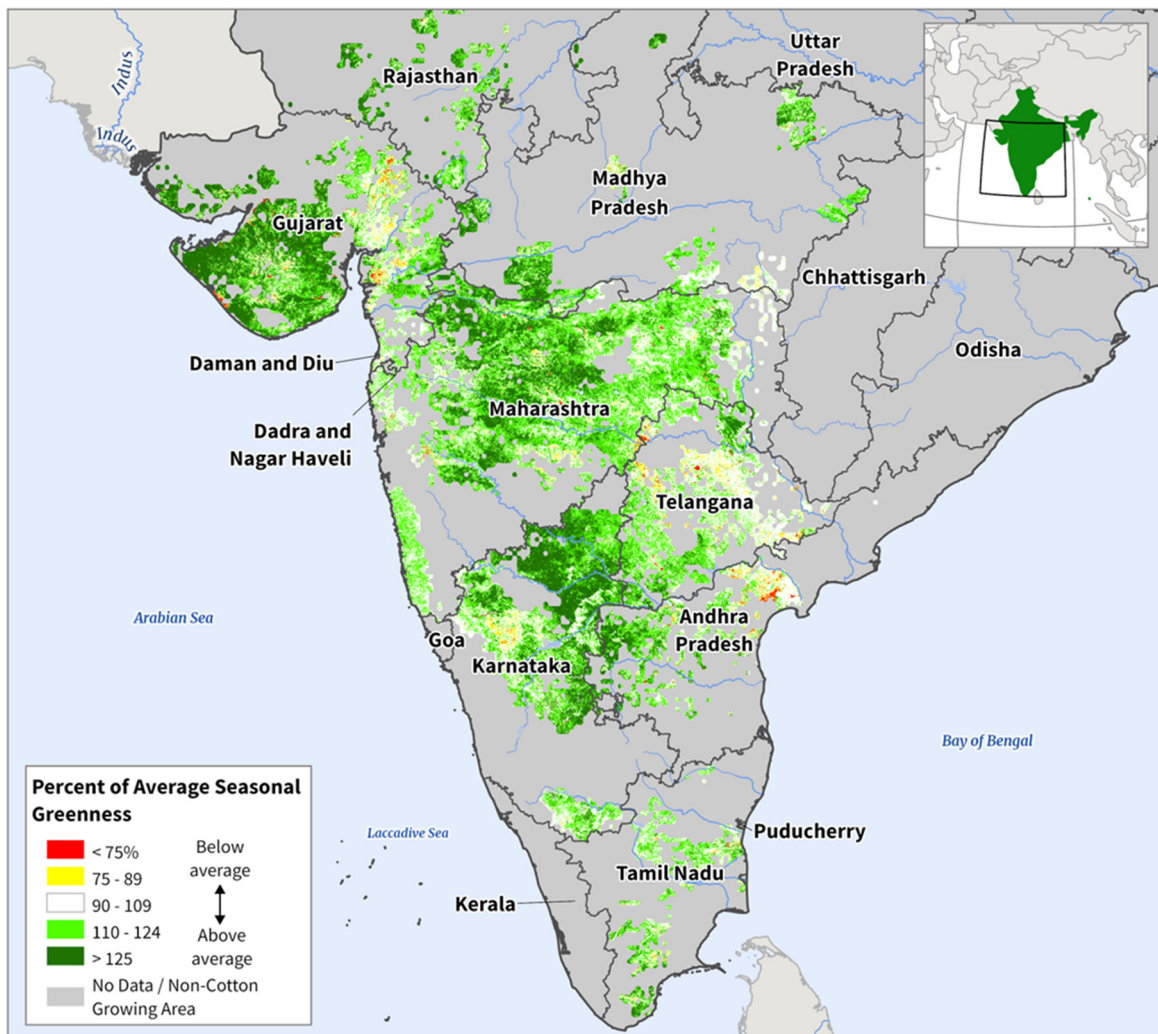
Mexico corn has two seasons, a spring/summer season, followed by a fall/winter season. Harvest for the spring/summer crop is underway until the end of February. (For more information, please contact Lisa.Colson@usda.gov.)

India Cotton: Production Revised Up

USDA estimates marketing year (MY) 2024/25 cotton production for India at 25.0 million 480-pound bales, up 4 percent from last month and down 2 percent from last year. Harvested area is estimated at 11.8 million hectares, unchanged from last month and down 7 percent from last year and 9 percent from the 5-year average. Yield is estimated at 461 kilograms per hectare, up 4 percent from last month and 6 percent from last year. India is the world's second largest producer of cotton, accounting for over 20 percent of global production.

India: Percent of Average Seasonal Greenness (PASG)

October 15 to November 15, 2024 (1-Month)



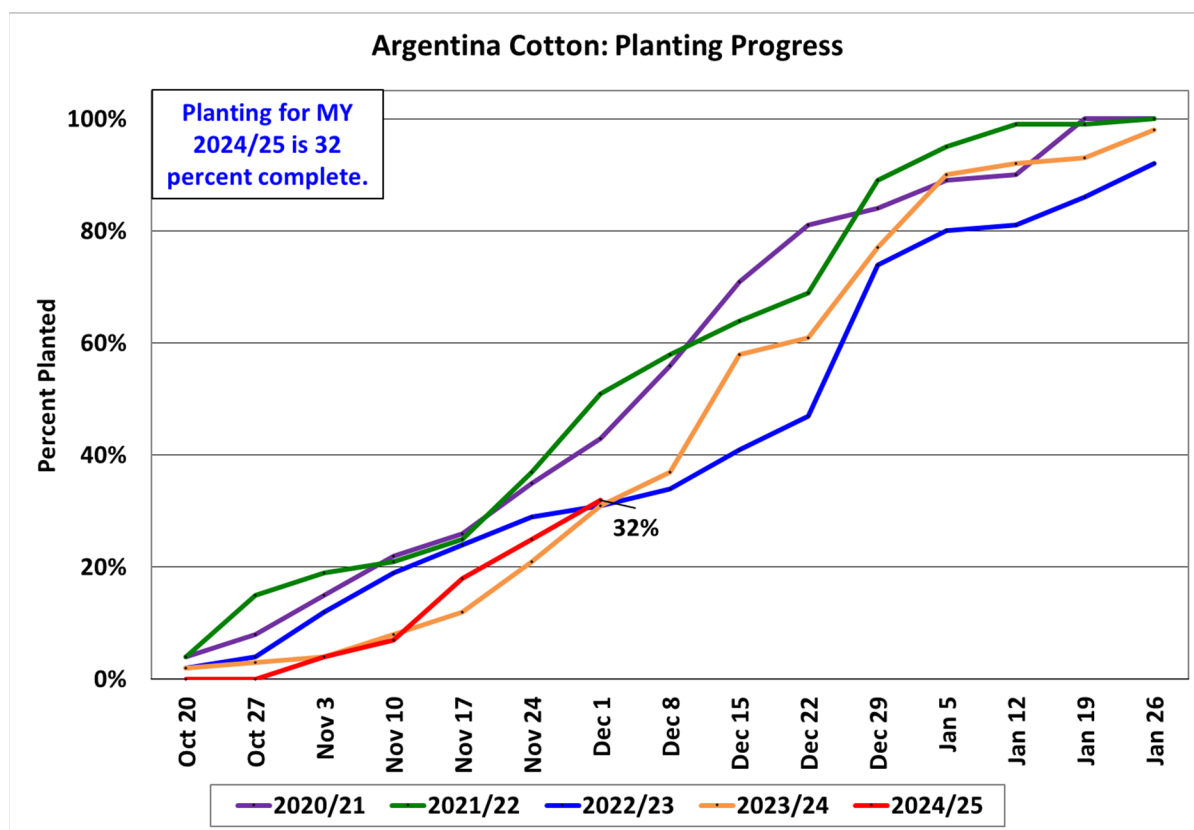
Sources: MODIS Percent of Average Seasonal Greenness (Oct 15 to Nov 15, 2024); IFPRI Spatial Production Allocation Model (SPAM) Cotton Non-Cropland Mask (2020)

The four percent yield increase is due to ideal weather conditions in the latter part of the *kharif* season. Although severe storms in late August damaged cotton crops in central and southern states, farmers replanted cotton in September and October which benefited from favorable conditions. Satellite-derived Percent of Average Seasonal Greenness (PASG) showed good crop vigor across the cotton-growing regions of the central and southern areas due to the late withdrawal of 2024 southwest monsoon.

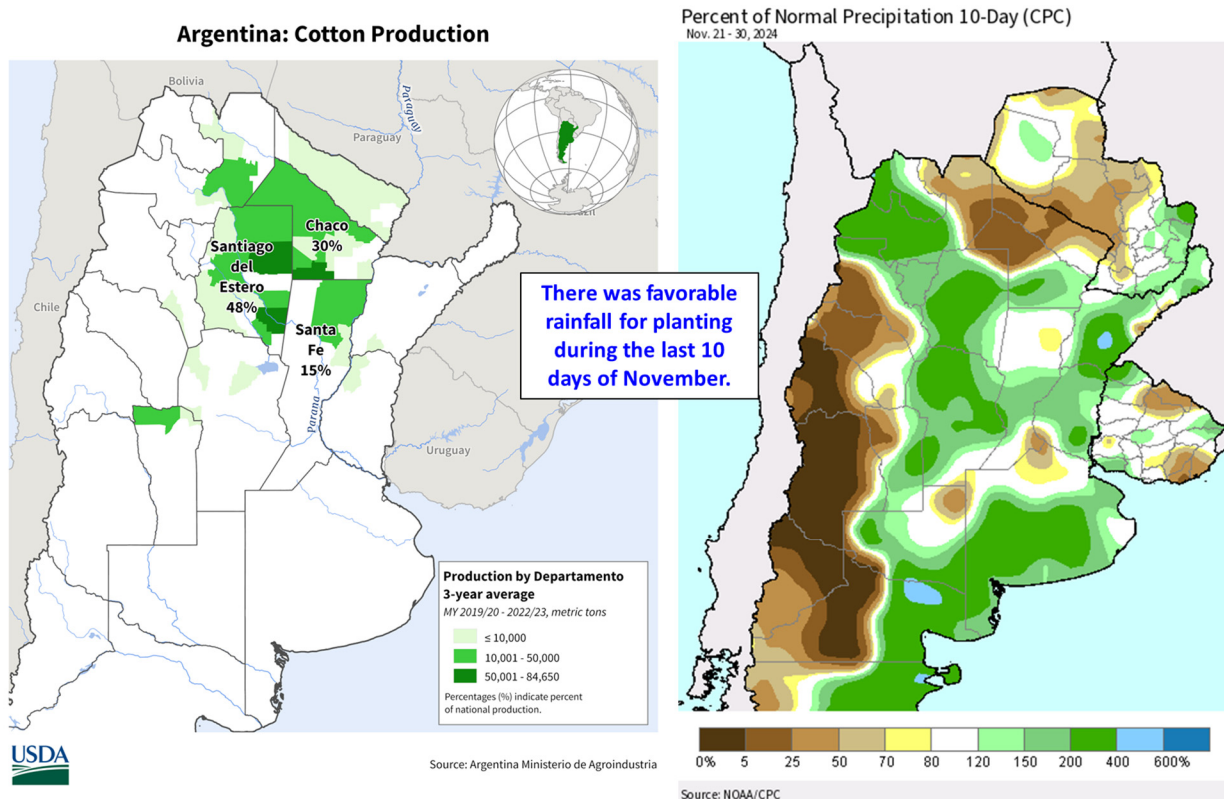
As of mid-November, the cotton crop in India was in varying stages of development. Early planted cotton in northern India has been harvested. In some areas of the central and southern states the crop was damaged from the August storms. Almost 90 percent of the replanted crops are in the boll-opening to harvest stage. However, there are some areas in the central and southern states that were planted in August, that have completed first pickings. Harvest will likely continue until February. (For more information, please contact Arnella.Trent@usda.gov.)

Argentina Cotton: Increased Planted Area at the Expense of Corn Area

Argentina cotton production for marketing year (MY) 2024/25 is forecast at 1.8 million 480-lb bales, up 9 percent from last month and 8 percent from last year. Cotton production has been growing over the last twenty years and MY 2024/25 is forecast at the second highest level, after the record of MY 1995/96. Cotton yield is forecast at 644 kilograms per hectare, essentially unchanged from last month, and up 11 percent from last year. Harvested area is forecast at 600,000 hectares, up 9 percent from last month, but down 4 percent from last year.



Source: Argentina Ministry of Agriculture

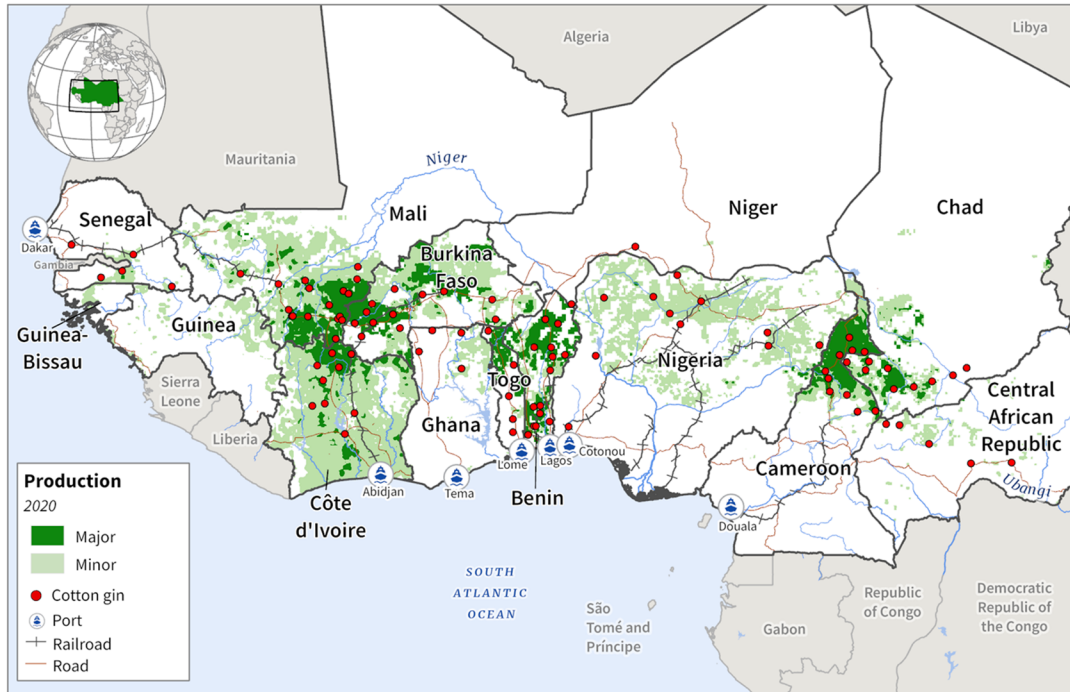


The Argentina Ministry of Agriculture published an updated planted area forecast of 700,000 ha. Abandonment for cotton is, on average, 4 percent, excluding the unusually high abandonment in MY 2018/19. This summer crop season is unique as many farmers are changing normal crop rotation patterns, especially in the northern growing regions. Corn area in the north is expected to decrease the most with the continued issues of the leafhopper insect, *chicharrita*, which causes corn stunt disease. Cotton area will replace corn area, especially in Chaco and Santiago del Estero provinces. Planting began in mid-October and as of the end of November, is about a third complete. (For more information, please contact Katie.McGaughey@usda.gov.)

African Franc Zone Cotton: Production Prospects Lowered from Decline in Area

USDA estimates African Franc Zone cotton production for marketing year (MY) 2024/25 at 4.7 million 480-pound bales, down 0.1 million bales (2 percent) from last month and 0.3 million bales (6 percent) from last year's crop. Harvested area is estimated at 2.4 million hectares, down 206,000 hectares (8 percent) from last month and 225,000 hectares (9 percent) from last year. The estimated yield of 423 kilograms per hectare is up 2 percent from last year's yield and 6 percent from the 5-year average yield. Area declines were reported in most countries due to localized flooding, high input costs, low farm gate prices, and civil conflict in Burkina Faso.

West Africa Cotton Production

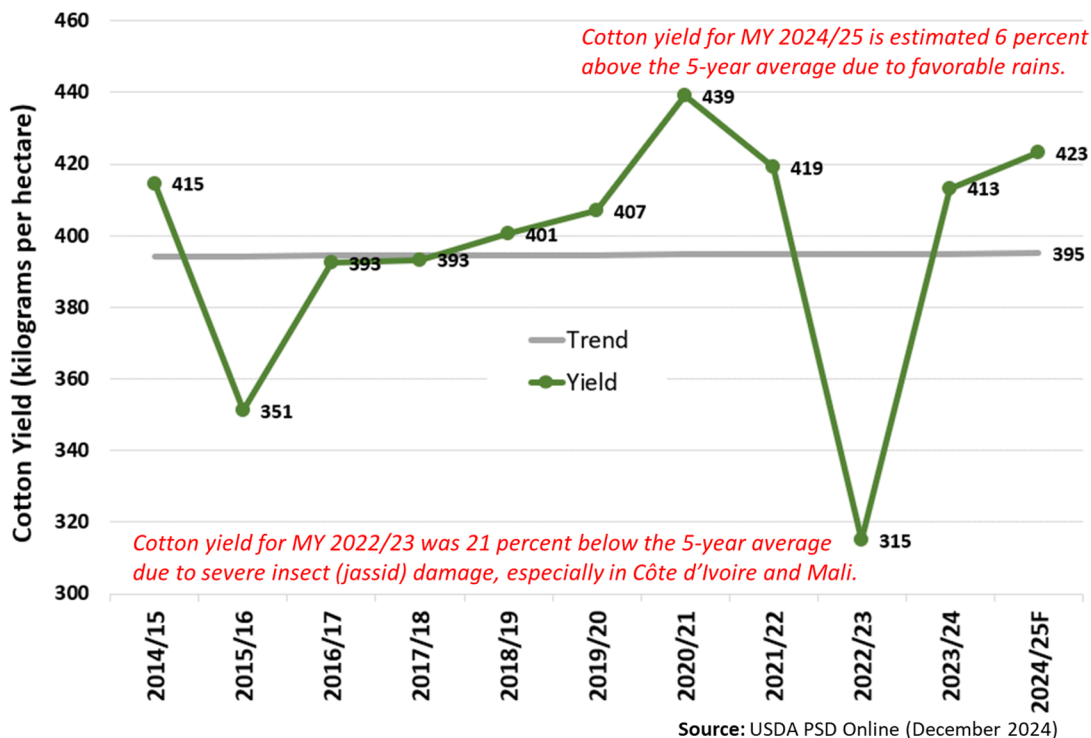


Source: International Food Policy Research Institute, Spatial Production Allocation Model (SPAM) 2020

African Franc Zone, as defined by WASDE, includes the following ten countries in order of MY 2024/25 production: Benin (1260 thousand bales), Mali (1070), Cote d'Ivoire (730), Cameroon (680), Burkina Faso (600), Chad (165), Togo (130), Central African Republic (36), Senegal (27), and Niger (9).

Cotton is sown from late May through mid-July and ginning season is from late October through April. Seasonal rainfall was average to above-average for all countries and insect pressures (*jassid*) were reported to be low to moderate, with average *jassid* infestations observed in most countries during September. Localized flooding was reported in several countries that resulted in area losses and potential yield losses from rotting bolls. Burkina Faso's planted cotton area was down 117,000 hectares from the previous year due to civil conflict, and Mali's cotton area was down 85,000 hectares due to delayed rains during planting, late distribution of urea, and late cotton payments to farmers after harvesting last year's crop.

African Franc Zone Cotton Yields



Cotton Ginning Schedule for West Africa

Country	Company	Oct	Nov	Dec	Jan	Feb	Mar	Apr
Benin	SODECO			■	■	■	■	■
Burkina Faso	SOFITEX		■	■	■	■	■	■
Cameroon	SODECOTON		■	■	■	■	■	
Côte d'Ivoire	CIDT		■	■	■	■	■	■
Mali	CMDT		■	■	■	■	■	
Senegal	SODEFITE		■	■	■	■	■	
Togo	NSCT		■	■	■	■	■	

Source: Ginning periods, 2018, International Trade Centre (ITC) and Union Economique et Monétaire Ouest Africaine (UEMOA), "Cotton from UEMOA, The White Gold from West Africa Conquering the World Market"

African Franc Zone, as defined by WASDE, includes the following ten countries in order of MY 2024/25 production: Benin (1260 thousand bales), Mali (1070), Cote d'Ivoire (730), Cameroon (680), Burkina Faso (600), Chad (165), Togo (130), Central African Republic (36), Senegal (27), and Niger (9). (For more information, please contact Curt.Reynolds@usda.gov.)



World Agricultural Production
U.S. Department of Agriculture

Foreign Agricultural Service / Global Market Analysis
International Production Assessment Division (IPAD)
GMA/IPAD Room 5071, South Building
1400 Independence Ave SW
Washington, DC 20250-1051
<https://ipad.fas.usda.gov/>

This report uses information from the Foreign Agricultural Service's (FAS) global network of agricultural attachés and counselors, official statistics of foreign governments and other foreign source materials, and the analysis of economic data and satellite imagery. Estimates of foreign area, yield, and production are from the International Production Assessment Division (IPAD), FAS, and are reviewed by USDA's Inter-Agency Commodity Estimates Committee. Estimates of U.S. area, yield, and production are from USDA's National Agricultural Statistics Service. Numbers within the report may not add to totals because of rounding. This report reflects official USDA estimates released in the World Agricultural Supply and Demand Estimates (WASDE-584), December 10, 2024.

The FAS International Production Assessment Division prepared this report. The next issue of World Agricultural Production will be released after 12:00 p.m. Eastern Time, January 10, 2025.

Conversion Table

Metric tons to bushels

Wheat, soybeans	=	MT * 36.7437
Corn, sorghum, rye	=	MT * 39.36825
Barley	=	MT * 45.929625
Oats	=	MT * 68.894438

Metric tons to 480-lb bales

Cotton	=	MT * 4.592917
--------	---	---------------

Metric tons to hundredweight

Rice	=	MT * 22.04622
------	---	---------------

Area & weight

1 hectare	=	2.471044 acres
1 kilogram	=	2.204622 pounds



For further information, contact:
U.S. Department of Agriculture
Foreign Agricultural Service
Global Market Analysis

International Production Assessment Division
 GMA/IPAD Room 5071, South Building
 1400 Independence Ave SW
 Washington, DC 20250-1051

GENERAL INFORMATION

Senior Director	Ronald Frantz	202-720-4056	ronald.frantz@usda.gov
Director	Robert Tetrault	202-720-1071	robert.tetrault@usda.gov
USDA Remote Sensing Advisor	Vacant		
Sr. Analyst/Technical Lead	Curt Reynolds, Ph.D.	202-690-0134	curt.reynolds@usda.gov
Sr. Analyst/ Satellite Imagery	Dath Mita, Ph.D.	202-720-7339	dath.mita@usda.gov
Archives Manager/Technical Lead			
Sr. Analyst/Technical Lead	Vacant		
GIS Mapping/Imagery Analyst	Lisa Colson	202-720-6652	lisa.colson@usda.gov
WAP Coordinators	Shannon Moyo	771-221-5973	shannon.moyo@usda.gov
	Vacant		

ANALYSIS REGIONS

ANALYST

CONTACT INFORMATION

Brazil	Aaron Mulhollen	202-690-0131	aaron.mulhollen@usda.gov
South America (except Brazil), and Central Asia	Katie McGaughey	202-720-9210	katie.mcgaughey@usda.gov
Europe, North Africa, and Middle East	Bryan Purcell	202-690-0138	bryan.purcell@usda.gov
India, Pakistan, and South Asia	Arnella Trent	202-720-0881	arnella.trent@usda.gov
China and East Asia	Dath Mita, Ph.D.	202-720-7339	dath.mita@usda.gov
South Africa and Sub-Saharan Africa	Curt Reynolds, Ph.D.	202-690-0134	curt.reynolds@usda.gov
Indonesia and Southeast Asia	Justin Jenkins	202-720-0419	justin.jenkins@usda.gov
Mexico and Central America	Lisa Colson	202-720-6652	lisa.colson@usda.gov
Canada, Caribbean, and Australia	Shannon Moyo	771-221-5973	shannon.moyo@usda.gov
Russia, Ukraine, Kazakhstan, Moldova, and Belarus	Iliana Mladenova, Ph.D.	202-690-2315	iliana.mladenova@usda.gov



The Foreign Agricultural Service (FAS) updates its production, supply and distribution (PSD) database for cotton, oilseeds, and grains at 12:00 p.m. on the day the *World Agricultural Supply and Demand Estimates* (WASDE) report is released. This circular is released by 12:15 p.m.

FAS Reports and Databases:

World Agricultural Production

Current: <https://www.fas.usda.gov/data/world-agricultural-production>

Archive: <https://usda.library.cornell.edu/concern/publications/5q47rn72z?locale=en>

USDA's Foreign Agricultural Service (FAS) publishes a monthly report on crop acreage, yield and production in major countries worldwide. Sources include reporting from FAS's worldwide offices, official statistics of foreign governments, and analysis of economic data and satellite imagery. The reports reflect official USDA estimates released in the monthly *World Agricultural Supply and Demand Estimates* (WASDE).

World Markets and Trade

Current: <https://www.fas.usda.gov/data>

Archive:

https://usda.library.cornell.edu/catalog?f%5Bmember_of_collections_ssim%5D%5B%5D=Foreign+Agricultural+Service&locale=en

USDA's Foreign Agricultural Service (FAS) publishes monthly and quarterly reports which include data on U.S. and global trade, production, consumption and stocks, as well as analysis of developments affecting world trade in oilseeds, grains, cotton, livestock and poultry. The reports reflect official USDA estimates released in the monthly *World Agricultural Supply and Demand Estimates* (WASDE).

Global Agricultural Information Network (GAIN)

<https://gain.fas.usda.gov/>

USDA's Foreign Agricultural Service (FAS) provides timely reports on foreign markets through the Global Agriculture Information Network (GAIN) database. An average of 2,000 reports are added each year, with reports going back to 1995. GAIN reports are compiled by FAS' global market intelligence network, which includes FAS foreign service officers and locally engaged staff in over 90 overseas offices world-wide. They provide on-the-ground intelligence, insight, and analysis on nearly 200 countries, delivering information on foreign agricultural markets, crop conditions, and agro-political dynamics of interest to U.S. agriculture. GAIN reports contain assessments of commodity and trade issues made by USDA staff and are not necessarily statements of official U.S. government policy.

Production, Supply and Distribution (PS&D) Online

<https://apps.fas.usda.gov/psdonline/app/index.html#/app/home>

PSD Online is the public repository for USDA's Official Production, Supply and Distribution forecast data and reports for key agricultural commodities. PSD Online data are reviewed and updated monthly by an interagency committee chaired by USDA's World Agricultural Outlook Board (WAOB). The committee consist of representatives from Foreign Agricultural Service (FAS), the Economic Research Service (ERS), the Farm Service Agency (FSA), and the Agricultural Marketing Service (AMS).

EU Countries and Russia Wheat: Area and Production Estimates

<https://apps.fas.usda.gov/psdonline/app/index.html#/app/downloads> (click on PSD Datasets)

USDA's Foreign Agricultural Service (FAS) provides country-level area and production estimates for the nations of the European Union. For Russia, country-level area and production estimates are provided for Winter and Spring wheat. These datasets are reviewed and updated monthly by an interagency committee chaired by USDA's World Agricultural Outlook Board (WAOB) and can be downloaded through PSD datasets on PSD Online.



FAS Reports and Databases:

International Production Assessment (IPAD)

<https://ipad.fas.usda.gov/>

USDA's Foreign Agricultural Service (FAS) maintains a dynamic global crop production portal with key information including *World Agricultural Production* (WAP) briefs, Commodity Intelligence Reports (CIR), geospatial applications, crop production maps at a subnational level and crop calendars for the top-20 producing countries. Additionally, Crop Explorer (<https://ipad.fas.usda.gov/cropexplorer/>) displays rainfall, temperature, evapotranspiration, soil moisture, snow cover, and vegetation conditions in charts and maps.

USDA and NASA Global Agricultural Monitoring (GLAM)

<https://glam1.gsfc.nasa.gov/>

The USDA and NASA Global Agricultural Monitoring (GLAM) system provides near real-time and science quality Moderate Resolution Imaging Spectroradiometer (MODIS) Normalized Difference Vegetation Index (NDVI) from the satellites Terra and Aqua. The public can view and retrieve MODIS 8-day composited, global NDVI satellite imagery and time series data. GLAM was developed by NASA's Global Inventory Modeling and Mapping Studies (GIMMS) group for USDA's Foreign Agricultural Service.

Global Agricultural and Disaster Assessment System (GADAS)

<https://geo.fas.usda.gov/GADAS/index.html>

USDA's Foreign Agricultural Service (FAS) provides the Global Agricultural and Disaster Assessment System (GADAS), a web-based Geographic Information System (GIS) tool which integrates a vast array of highly detailed earth observation data streams, particularly targeted towards agricultural and disaster assessment analysis. GADAS is an interactive website which provides analysts with a wide variety of routine geospatial products (maps, charts, tables) they require for comprehensive situational investigations and recurring assessments.

Export Sales Reporting

<https://apps.fas.usda.gov/esrquery/>

USDA's Export Sales Reporting Program monitors U.S. agricultural export sales on a daily and weekly basis. Export sales reporting provides a constant stream of up-to-date market information for 40 U.S. agricultural commodities sold abroad. The weekly U.S. Export Sales report is the most currently available source of U.S. exports sales data. The data is used to analyze overall levels of export demand, determine where markets exit, and assess the relative position of U.S. commodities in foreign markets.

Global Agricultural Trade System (GATS)

<https://apps.fas.usda.gov/gats/default.aspx>

The Global Agricultural Trade System (GATS) is a searchable database containing monthly U.S. Census Bureau trade data organized by agricultural commodity and agricultural related product groups. Trade data is searchable by partner countries and partner groups. Historical U.S. agricultural trade data is available back to 1967. In addition, U.N. trade statistics (UN Comtrade) may be queried through GATS. UN trade data is available for nearly 200 countries or areas, dating from the inception of the Harmonized System (HS) of trade codes in 1989 to present. The database is continuously updated. U.S. trade data is updated monthly according to the U.S. Census Bureau's reporting system. UN Comtrade data are updated in GATS after nationally submitted data to the UN are standardized by the UN Statistical Division and added to the UN Comtrade database.

Other USDA Reports:

World Agricultural Supply and Demand Estimates (WASDE):

<http://www.usda.gov/oce/commodity/wasde/>

Economic Research Service:

<http://www.ers.usda.gov/topics/crops>

National Agricultural Statistics Service:

<http://www.nass.usda.gov/Publications/>

Table 01 World Crop Production Summary

Million Metric Tons

Commodity	World -	Total Foreign	North America			Former Soviet		Europea n	Asia (WAP)					South America		Selected Other			All Others
			United States	Canada -	Mexico -	Russia -	Ukraine -		China -	India -	Indo-nesia	Paki- stan	Thai- land	Argen- tina	Brazil -	Aus- tralia	South Africa	Turkey -	
---Million metric tons---																			
Wheat																			
2022/23	789.9	745.0	44.9	34.8	3.6	92.0	21.5	nr	137.7	104.0	0.0	26.2	0.0	12.6	10.6	40.5	2.1	17.3	242.1
2023/24 prel.	791.2	742.1	49.1	32.9	3.5	91.5	23.0	nr	136.6	110.6	0.0	28.2	0.0	15.9	8.1	26.0	2.1	21.0	243.0
2024/25 proj.																			
Nov	794.7	741.1	53.7	35.0	2.6	81.5	22.9	nr	140.0	113.3	0.0	31.4	0.0	17.5	8.5	32.0	2.0	19.0	235.4
Dec	792.9	739.3	53.7	35.0	2.6	81.5	22.9	nr	140.0	113.3	0.0	31.4	0.0	17.5	8.1	32.0	2.0	19.0	234.0
Coarse Grains																			
2022/23	1,455.5	1,099.0	356.4	30.5	33.9	44.1	33.9	nr	285.9	56.8	12.4	11.3	5.4	43.9	143.5	18.8	17.5	14.8	346.2
2023/24 prel.	1,505.9	1,103.0	402.9	27.5	28.8	42.5	39.8	nr	297.4	57.2	12.7	10.2	5.4	58.4	127.8	14.4	13.9	17.0	349.9
2024/25 proj.																			
Nov	1,499.7	1,102.4	397.3	26.3	29.9	34.5	32.4	nr	300.3	57.6	13.2	9.8	5.5	60.3	133.5	16.3	17.6	14.7	350.6
Dec	1,499.1	1,101.8	397.3	27.5	29.1	34.5	33.2	nr	300.6	57.6	12.8	9.8	5.5	60.3	133.5	15.8	17.6	14.7	349.5
Rice, Milled																			
2022/23	516.7	511.6	5.1	0.0	0.1	0.6	0.0	nr	145.9	135.8	33.9	7.3	20.9	0.8	6.8	0.4	0.0	0.6	158.5
2023/24 prel.	522.6	515.7	6.9	0.0	0.2	0.7	0.0	nr	144.6	137.8	33.0	9.9	20.0	0.8	7.2	0.4	0.0	0.5	160.5
2024/25 proj.																			
Nov	533.8	526.8	7.0	0.0	0.2	0.8	0.0	nr	146.0	145.0	34.0	10.0	20.1	0.9	7.5	0.4	0.0	0.6	161.4
Dec	533.7	526.7	7.0	0.0	0.2	0.8	0.0	nr	146.0	145.0	34.0	10.0	20.1	1.0	8.0	0.3	0.0	0.6	160.8
Total Grains																			
2022/23	2,762.1	2,355.7	406.4	65.3	37.6	136.7	55.4	nr	569.6	296.5	46.3	44.9	26.3	57.2	160.9	59.8	19.6	32.7	746.8
2023/24 prel.	2,819.7	2,360.8	458.9	60.5	32.4	134.7	62.8	nr	578.6	305.5	45.7	48.3	25.4	75.0	143.1	40.9	16.0	38.6	753.4
2024/25 proj.																			
Nov	2,828.2	2,370.3	457.9	61.3	32.6	116.8	55.3	nr	586.3	315.9	47.2	51.2	25.6	78.7	149.5	48.6	19.6	34.2	747.4
Dec	2,825.8	2,367.8	457.9	62.5	31.8	116.8	56.1	nr	586.6	315.9	46.8	51.2	25.6	78.7	149.6	48.1	19.6	34.2	744.4
Oilseeds																			
2022/23	637.4	511.6	125.8	25.5	0.9	26.6	19.8	nr	67.9	42.3	14.7	2.7	1.0	31.5	166.9	9.8	3.8	4.0	94.3
2023/24 prel.	657.5	535.3	122.2	26.3	0.6	28.1	25.5	nr	69.1	41.4	13.9	3.8	1.1	54.2	158.8	7.3	2.8	3.1	99.3
2024/25 proj.																			
Nov	682.2	551.1	131.1	27.2	0.6	28.3	22.7	nr	68.3	43.1	15.0	3.1	1.1	57.0	175.7	6.8	3.9	3.2	95.0
Dec	683.4	552.2	131.2	26.4	0.6	28.6	23.3	nr	68.3	43.5	15.0	3.1	1.1	58.2	175.8	7.0	3.9	3.2	94.3
Cotton																			
2022/23	116.3	101.8	14.5	0.0	1.6	0.0	0.0	1.6	30.8	26.3	0.0	3.9	0.0	1.2	11.7	5.8	0.1	4.9	14.0
2023/24 prel.	113.0	100.9	12.1	0.0	0.9	0.0	0.0	1.0	27.4	25.4	0.0	7.0	0.0	1.7	14.6	5.0	0.1	3.2	14.8
2024/25 proj.																			
Nov	116.2	102.0	14.2	0.0	0.8	0.0	0.0	1.3	28.2	24.0	0.0	5.5	0.0	1.6	16.8	5.0	0.1	4.0	14.7
Dec	117.4	103.1	14.3	0.0	0.8	0.0	0.0	1.3	28.2	25.0	0.0	5.5	0.0	1.8	16.9	5.0	0.1	4.0	14.6

1/ Includes wheat, coarse grains, and rice (milled) shown above.

Table 02 Wheat Area, Yield, and Production

Country / Region	Area (Million hectares)				Yield (Metric tons per hectare)				Production (Million metric tons)				Change in Production						
	2022/23	Prel.		2024/25 Proj.		2022/23	Prel.		2024/25 Proj.		2022/23	Prel.		2024/25 Proj.		From last month		From last year	
		2023/24	Nov	Dec	2023/24		Nov	Dec	2023/24	Nov		Dec	MMT	Percent	MMT	Percent			
World	219.64	223.05	222.22	222.18	3.60	3.55	3.58	3.57	789.89	791.24	794.73	792.95	-1.78	-0.22	1.71	0.22			
United States	14.36	15.01	15.57	15.57	3.13	3.27	3.45	3.45	44.90	49.10	53.65	53.65	0.00	0.00	4.56	9.28			
Total Foreign	205.28	208.05	206.65	206.62	3.63	3.57	3.59	3.58	744.99	742.14	741.08	739.30	-1.78	-0.24	-2.85	-0.38			
European Union	24.44	24.34	22.90	22.83	5.50	5.55	5.35	5.31	134.49	135.10	122.60	121.30	-1.30	-1.06	-13.80	-10.21			
United Kingdom	1.81	1.72	1.40	1.40	8.57	8.13	7.89	7.89	15.54	13.98	11.05	11.05	0.00	0.00	-2.93	-20.96			
Serbia	0.62	0.73	0.63	0.63	5.32	4.69	4.80	4.80	3.30	3.40	3.00	3.00	0.00	0.00	-0.40	-11.76			
China	23.52	23.63	23.70	23.70	5.86	5.78	5.91	5.91	137.72	136.59	140.00	140.00	0.00	0.00	3.41	2.50			
South Asia																			
India	30.46	31.40	31.83	31.83	3.41	3.52	3.56	3.56	104.00	110.55	113.29	113.29	0.00	0.00	2.74	2.48			
Pakistan	8.98	9.03	9.63	9.63	2.92	3.12	3.26	3.26	26.21	28.16	31.40	31.40	0.00	0.00	3.24	11.50			
Afghanistan	1.86	2.35	2.30	2.30	2.05	2.20	2.26	2.26	3.80	5.17	5.20	5.20	0.00	0.00	0.03	0.58			
Nepal	0.72	0.72	0.72	0.72	2.98	2.90	2.92	2.92	2.15	2.09	2.10	2.10	0.00	0.00	0.01	0.48			
Former Soviet Union - 12																			
Russia	29.00	28.83	28.00	28.00	3.17	3.17	2.91	2.91	92.00	91.50	81.50	81.50	0.00	0.00	-10.00	-10.93			
Russia Winter	16.30	15.27	15.80	15.80	4.17	4.19	3.64	3.64	68.00	64.00	57.50	57.50	0.00	0.00	-6.50	-10.16			
Russia Spring	12.70	13.56	12.20	12.20	1.89	2.03	1.97	1.97	24.00	27.50	24.00	24.00	0.00	0.00	-3.50	-12.73			
Ukraine	5.60	5.01	5.20	5.20	3.84	4.59	4.40	4.40	21.50	23.00	22.90	22.90	0.00	0.00	-0.10	-0.43			
Kazakhstan	12.81	13.13	13.00	13.00	1.28	0.92	1.38	1.38	16.40	12.11	18.00	18.00	0.00	0.00	5.89	48.63			
Uzbekistan	1.26	1.40	1.30	1.30	4.99	4.62	5.15	5.15	6.27	6.46	6.70	6.70	0.00	0.00	0.24	3.68			
Belarus	0.68	0.68	0.69	0.69	3.48	3.38	3.80	3.80	2.35	2.30	2.60	2.60	0.00	0.00	0.30	13.04			
Canada	10.10	10.70	10.60	10.65	3.45	3.08	3.30	3.28	34.81	32.95	35.00	34.96	-0.04	-0.12	2.01	6.11			
South America																			
Argentina	5.50	5.58	6.00	6.00	2.28	2.84	2.92	2.92	12.55	15.85	17.50	17.50	0.00	0.00	1.65	10.41			
Brazil	3.09	3.47	3.00	3.00	3.42	2.33	2.83	2.70	10.55	8.10	8.50	8.10	-0.40	-4.71	0.00	0.04			
Australia	13.05	12.37	13.00	13.00	3.11	2.10	2.46	2.46	40.55	25.96	32.00	32.00	0.00	0.00	6.04	23.27			
Africa																			
Egypt	1.45	1.35	1.40	1.40	6.55	6.57	6.57	6.57	9.50	8.87	9.20	9.20	0.00	0.00	0.33	3.72			
Morocco	2.44	2.50	2.20	2.20	1.11	1.66	1.12	1.12	2.71	4.16	2.47	2.47	0.00	0.00	-1.69	-40.63			
Algeria	1.80	1.80	1.80	1.80	2.00	1.50	1.67	1.67	3.60	2.70	3.00	3.00	0.00	0.00	0.30	11.11			
Ethiopia	1.90	1.90	1.90	1.90	3.05	3.05	3.16	3.16	5.80	5.80	6.00	6.00	0.00	0.00	0.20	3.45			
Middle East																			
Turkey	6.80	7.20	7.25	7.25	2.54	2.92	2.62	2.62	17.25	21.00	19.00	19.00	0.00	0.00	-2.00	-9.52			
Iran	6.20	6.20	6.20	6.20	2.13	2.26	2.34	2.34	13.20	14.00	14.50	14.50	0.00	0.00	0.50	3.57			
Iraq	2.10	2.60	2.70	2.70	1.52	2.00	2.22	2.22	3.20	5.20	6.00	6.00	0.00	0.00	0.80	15.38			
Syria	1.18	1.50	1.30	1.30	1.31	2.03	2.15	2.15	1.55	3.03	2.80	2.80	0.00	0.00	-0.23	-7.68			
Mexico	0.60	0.56	0.46	0.46	6.06	6.21	5.65	5.65	3.61	3.48	2.60	2.60	0.00	0.00	-0.88	-25.20			
Others	7.34	7.36	7.55	7.53	2.78	2.81	2.94	2.94	20.38	20.64	22.17	22.13	-0.04	-0.18	1.49	7.21			

Table 03 Total Coarse Grain Area, Yield, and Production

Country / Region	Area (Million hectares)				Yield (Metric tons per hectare)				Production (Million metric tons)				Change in Production			
	Prel.		2024/25 Proj.		Prel.		2024/25 Proj.		Prel.		2024/25 Proj.		From last month		From last year	
	2022/23	2023/24	Nov	Dec	2022/23	2023/24	Nov	Dec	2022/23	2023/24	Nov	Dec	MMT	Percent	MMT	Percent
World	337.89	338.86	335.63	335.51	4.31	4.44	4.47	4.47	1,455.50	1,505.86	1,499.71	1,499.13	-0.58	-0.04	-6.74	-0.45
United States	35.18	38.99	36.89	36.89	10.13	10.33	10.77	10.77	356.45	402.88	397.28	397.28	0.00	0.00	-5.60	-1.39
Total Foreign	302.72	299.87	298.74	298.62	3.63	3.68	3.69	3.69	1,099.05	1,102.98	1,102.43	1,101.85	-0.58	-0.05	-1.14	-0.10
China	45.58	46.71	47.14	47.20	6.27	6.37	6.37	6.37	285.89	297.38	300.30	300.55	0.25	0.08	3.17	1.07
European Union	26.59	26.13	26.25	26.20	5.01	5.23	5.24	5.21	133.11	136.78	137.56	136.41	-1.15	-0.84	-0.37	-0.27
United Kingdom	1.37	1.38	1.47	1.47	6.33	5.87	5.72	5.72	8.67	8.08	8.43	8.43	0.00	0.00	0.35	4.30
South America																
Brazil	24.45	23.62	24.51	24.51	5.87	5.41	5.45	5.45	143.49	127.81	133.53	133.52	0.00	0.00	5.72	4.47
Argentina	9.66	9.32	8.91	8.91	4.55	6.26	6.77	6.77	43.91	58.37	60.29	60.29	0.00	0.00	1.92	3.29
Former Soviet Union - 12																
Russia	13.60	12.88	11.85	11.85	3.25	3.30	2.91	2.91	44.13	42.54	34.50	34.50	0.00	0.00	-8.04	-18.90
Ukraine	6.32	6.24	5.95	6.05	5.37	6.38	5.45	5.49	33.93	39.78	32.42	33.24	0.82	2.51	-6.54	-16.45
Kazakhstan	2.63	2.87	2.65	2.65	1.79	1.40	1.83	1.83	4.71	4.01	4.84	4.84	0.00	0.00	0.83	20.77
Belarus	1.03	1.05	1.18	1.18	3.11	3.09	3.39	3.39	3.20	3.23	3.98	3.98	0.00	0.00	0.75	23.22
Africa																
Nigeria	13.50	13.40	13.50	13.50	1.61	1.42	1.45	1.45	21.70	19.01	19.60	19.60	0.00	0.00	0.59	3.09
South Africa	3.13	3.20	3.34	3.34	5.61	4.35	5.27	5.26	17.53	13.91	17.60	17.56	-0.05	-0.26	3.65	26.22
Tanzania	5.30	5.50	5.60	5.60	1.36	1.51	1.67	1.67	7.23	8.33	9.33	9.33	0.00	0.00	1.00	12.01
Burkina Faso	4.09	4.20	4.20	4.20	1.16	1.12	1.13	1.13	4.73	4.72	4.75	4.75	0.00	0.00	0.04	0.74
Ethiopia	5.45	5.41	5.64	5.64	3.21	3.25	3.18	3.18	17.47	17.56	17.91	17.91	0.00	0.00	0.35	1.99
Egypt	1.10	1.12	1.09	1.09	7.52	7.19	7.22	7.22	8.28	8.07	7.88	7.88	0.00	0.00	-0.19	-2.35
Mali	5.20	4.80	4.90	4.90	1.38	1.43	1.43	1.43	7.15	6.86	7.00	7.00	0.00	0.00	0.14	2.07
India	23.90	25.02	24.85	24.85	2.38	2.28	2.32	2.32	56.78	57.16	57.60	57.60	0.00	0.00	0.44	0.78
Southeast Asia																
Indonesia	3.50	3.70	3.80	3.60	3.54	3.43	3.47	3.56	12.40	12.70	13.20	12.80	-0.40	-3.03	0.10	0.79
Philippines	2.54	2.49	2.55	2.55	3.28	3.25	3.25	3.25	8.32	8.10	8.30	8.30	0.00	0.00	0.20	2.47
Vietnam	0.89	0.87	0.85	0.85	4.99	5.00	5.06	5.06	4.42	4.35	4.30	4.30	0.00	0.00	-0.05	-1.15
Thailand	1.21	1.25	1.26	1.26	4.47	4.29	4.34	4.34	5.40	5.35	5.45	5.45	0.00	0.00	0.10	1.87
Mexico	8.64	7.70	7.95	7.75	3.92	3.74	3.76	3.75	33.88	28.82	29.86	29.06	-0.80	-2.68	0.24	0.83
Canada	5.74	5.24	4.94	5.05	5.32	5.25	5.33	5.45	30.54	27.52	26.33	27.52	1.19	4.53	0.00	-0.01
Australia	5.69	5.63	5.91	5.90	3.31	2.56	2.75	2.67	18.84	14.44	16.27	15.77	-0.50	-3.07	1.33	9.17
Middle East																
Turkey	4.57	4.59	4.55	4.55	3.25	3.72	3.22	3.22	14.84	17.05	14.66	14.66	0.00	0.00	-2.39	-13.99
Iran	1.86	1.86	1.81	1.81	2.38	2.38	2.50	2.50	4.42	4.42	4.52	4.52	0.00	0.00	0.10	2.26
Others	75.22	73.71	72.11	72.18	1.65	1.72	1.69	1.69	124.09	126.64	122.03	122.09	0.06	0.05	-4.55	-3.59

World and Selected Countries and Regions; Coarse Grain includes: Barley, Corn, Millet, Mixed Grains, Oats, Rye and Sorghum

Table 04 Corn Area, Yield, and Production

Country / Region	Area (Million hectares)				Yield (Metric tons per hectare)				Production (Million metric tons)				Change in Production						
	2022/23	Prel.		2024/25 Proj.		2022/23	Prel.		2024/25 Proj.		2022/23	Prel.		2024/25 Proj.		From last month		From last year	
		2023/24	Nov	Dec	2023/24		Nov	Dec	2023/24	Nov		Dec	MMT	Percent	MMT	Percent			
World	202.23	205.27	203.07	202.72	5.75	5.99	6.00	6.01	1,163.38	1,229.63	1,219.40	1,217.89	-1.51	-0.12	-11.74	-0.95			
United States	31.85	35.01	33.47	33.47	10.89	11.13	11.49	11.49	346.74	389.67	384.64	384.64	0.00	0.00	-5.02	-1.29			
Total Foreign	170.38	170.26	169.60	169.25	4.79	4.93	4.92	4.92	816.64	839.96	834.76	833.25	-1.51	-0.18	-6.71	-0.80			
China	43.07	44.22	44.70	44.70	6.44	6.53	6.53	6.53	277.20	288.84	292.00	292.00	0.00	0.00	3.16	1.09			
South America																			
Brazil	22.40	21.50	22.30	22.30	6.12	5.67	5.70	5.70	137.00	122.00	127.00	127.00	0.00	0.00	5.00	4.10			
Argentina	7.20	7.00	6.40	6.40	5.14	7.14	7.97	7.97	37.00	50.00	51.00	51.00	0.00	0.00	1.00	2.00			
Bolivia	0.47	0.44	0.43	0.43	2.67	2.49	2.56	2.56	1.26	1.09	1.10	1.10	0.00	0.00	0.02	1.38			
European Union	8.85	8.32	8.62	8.60	5.92	7.43	6.82	6.74	52.38	61.87	58.80	58.00	-0.80	-1.36	-3.87	-6.25			
Africa																			
South Africa	2.95	3.00	3.15	3.15	5.81	4.47	5.40	5.40	17.10	13.40	17.00	17.00	0.00	0.00	3.60	26.87			
Nigeria	5.80	5.70	5.50	5.50	2.23	1.94	2.00	2.00	12.95	11.05	11.00	11.00	0.00	0.00	-0.05	-0.48			
Ethiopia	2.55	2.50	2.55	2.55	4.00	4.00	4.00	4.00	10.20	10.00	10.20	10.20	0.00	0.00	0.20	2.00			
Egypt	0.93	0.95	0.92	0.92	8.00	7.58	7.61	7.61	7.44	7.20	7.00	7.00	0.00	0.00	-0.20	-2.78			
Tanzania	4.00	4.20	4.30	4.30	1.48	1.67	1.86	1.86	5.90	7.00	8.00	8.00	0.00	0.00	1.00	14.29			
Malawi	1.75	1.79	1.50	1.50	2.12	1.96	1.93	1.93	3.72	3.51	2.90	2.90	0.00	0.00	-0.61	-17.38			
Zambia	1.12	1.42	0.69	0.69	2.43	2.30	2.20	2.20	2.71	3.26	1.51	1.51	0.00	0.00	-1.75	-53.72			
Kenya	2.16	2.20	2.15	2.15	1.43	1.95	1.86	1.86	3.09	4.28	4.00	4.00	0.00	0.00	-0.28	-6.63			
Uganda	2.15	2.27	2.30	2.30	2.20	2.18	2.17	2.17	4.74	4.95	5.00	5.00	0.00	0.00	0.06	1.11			
Zimbabwe	1.00	1.00	0.90	0.90	1.45	1.50	0.71	0.71	1.45	1.50	0.64	0.64	0.00	0.00	-0.87	-57.67			
Former Soviet Union - 12																			
Ukraine	4.05	4.20	4.10	4.10	6.67	7.74	6.39	6.46	27.00	32.50	26.20	26.50	0.30	1.15	-6.00	-18.46			
Russia	2.64	2.40	2.50	2.50	6.00	6.92	5.20	5.20	15.83	16.60	13.00	13.00	0.00	0.00	-3.60	-21.69			
South Asia																			
India	10.74	11.24	10.80	10.80	3.54	3.35	3.52	3.52	38.09	37.67	38.00	38.00	0.00	0.00	0.34	0.89			
Pakistan	1.72	1.64	1.50	1.50	6.39	6.00	6.33	6.33	10.99	9.85	9.50	9.50	0.00	0.00	-0.35	-3.52			
Nepal	0.97	0.97	0.97	0.97	2.82	2.82	2.82	2.82	2.72	2.72	2.72	2.72	0.00	0.00	0.00	0.00			
Southeast Asia																			
Indonesia	3.50	3.70	3.80	3.60	3.54	3.43	3.47	3.56	12.40	12.70	13.20	12.80	-0.40	-3.03	0.10	0.79			
Philippines	2.54	2.49	2.55	2.55	3.28	3.25	3.25	3.25	8.32	8.10	8.30	8.30	0.00	0.00	0.20	2.47			
Vietnam	0.89	0.87	0.85	0.85	4.99	5.00	5.06	5.06	4.42	4.35	4.30	4.30	0.00	0.00	-0.05	-1.15			
Thailand	1.18	1.22	1.23	1.23	4.53	4.34	4.39	4.39	5.35	5.30	5.40	5.40	0.00	0.00	0.10	1.89			
Mexico	6.89	6.10	6.30	6.10	4.07	3.85	3.89	3.89	28.08	23.50	24.50	23.70	-0.80	-3.27	0.20	0.85			
Canada	1.44	1.52	1.45	1.45	10.07	10.15	10.48	10.59	14.54	15.42	15.20	15.35	0.15	0.95	-0.08	-0.49			
Turkey	0.53	0.65	0.56	0.56	12.83	12.92	12.50	12.50	6.80	8.40	7.00	7.00	0.00	0.00	-1.40	-16.67			
Others	26.90	26.76	26.59	26.66	2.53	2.72	2.64	2.64	67.98	72.91	70.29	70.34	0.04	0.06	-2.57	-3.53			

World and Selected Countries and Regions

Table 05 Barley Area, Yield, and Production

Country / Region	Area (Million hectares)				Yield (Metric tons per hectare)				Production (Million metric tons)				Change in Production			
	Prel.		2024/25 Proj.		Prel.		2024/25 Proj.		Prel.		2024/25 Proj.		From last month		From last year	
	2022/23	2023/24	Nov	Dec	2022/23	2023/24	Nov	Dec	2022/23	2023/24	Nov	Dec	MMT	Percent	MMT	Percent
World	47.13	47.07	45.66	45.79	3.20	3.04	3.11	3.10	150.97	143.26	141.80	142.08	0.28	0.20	-1.18	-0.83
United States	0.98	1.04	0.76	0.76	3.86	3.89	4.13	4.13	3.79	4.05	3.13	3.13	0.00	0.00	-0.92	-22.70
Total Foreign	46.15	46.03	44.90	45.03	3.19	3.02	3.09	3.09	147.19	139.21	138.67	138.95	0.28	0.20	-0.26	-0.19
European Union	10.32	10.37	10.35	10.32	5.02	4.61	4.90	4.88	51.83	47.81	50.75	50.40	-0.35	-0.69	2.59	5.41
United Kingdom	1.12	1.14	1.20	1.20	6.62	6.12	6.00	6.00	7.39	6.96	7.20	7.20	0.00	0.00	0.24	3.40
Former Soviet Union - 12																
Russia	7.75	7.65	6.70	6.70	2.77	2.68	2.46	2.46	21.50	20.50	16.50	16.50	0.00	0.00	-4.00	-19.51
Ukraine	1.95	1.68	1.50	1.60	3.13	3.78	3.60	3.69	6.10	6.35	5.40	5.90	0.50	9.26	-0.45	-7.09
Kazakhstan	2.18	2.43	2.25	2.25	1.51	1.08	1.60	1.60	3.29	2.61	3.60	3.60	0.00	0.00	0.99	37.72
Belarus	0.40	0.40	0.40	0.40	2.75	2.75	3.00	3.00	1.10	1.10	1.20	1.20	0.00	0.00	0.10	9.09
Azerbaijan	0.39	0.36	0.36	0.36	2.85	2.99	3.06	3.06	1.10	1.07	1.10	1.10	0.00	0.00	0.03	3.09
Canada	2.64	2.70	2.32	2.39	3.79	3.29	3.23	3.40	9.99	8.91	7.50	8.14	0.64	8.59	-0.76	-8.55
Australia	4.13	4.20	4.45	4.44	3.43	2.57	2.74	2.64	14.14	10.80	12.20	11.70	-0.50	-4.10	0.90	8.33
Middle East																
Turkey	3.80	3.70	3.75	3.75	1.95	2.16	1.87	1.87	7.40	8.00	7.00	7.00	0.00	0.00	-1.00	-12.50
Iran	1.65	1.65	1.60	1.60	1.82	1.82	1.94	1.94	3.00	3.00	3.10	3.10	0.00	0.00	0.10	3.33
Iraq	0.21	0.16	1.00	1.00	1.12	1.29	1.40	1.40	0.24	0.20	1.40	1.40	0.00	0.00	1.20	600.00
Syria	1.12	1.43	1.10	1.10	0.16	0.88	1.09	1.09	0.18	1.26	1.20	1.20	0.00	0.00	-0.06	-4.38
Africa																
Ethiopia	0.98	0.98	0.98	0.98	2.22	2.50	2.54	2.54	2.18	2.45	2.49	2.49	0.00	0.00	0.04	1.43
Morocco	1.14	1.17	0.80	0.80	0.61	1.15	0.83	0.83	0.70	1.35	0.66	0.66	0.00	0.00	-0.69	-51.11
Algeria	1.03	1.03	1.03	1.03	1.37	1.00	1.17	1.17	1.40	1.03	1.20	1.20	0.00	0.00	0.18	17.07
Tunisia	0.30	0.11	0.35	0.35	1.74	0.83	1.57	1.57	0.52	0.09	0.55	0.55	0.00	0.00	0.46	511.11
South Africa	0.10	0.11	0.10	0.10	2.99	3.49	4.00	3.70	0.30	0.38	0.40	0.37	-0.03	-7.50	-0.01	-1.86
South America																
Argentina	1.59	1.30	1.25	1.25	2.95	3.92	3.92	3.92	4.70	5.10	4.90	4.90	0.00	0.00	-0.20	-3.92
Uruguay	0.21	0.18	0.19	0.19	4.25	4.44	4.34	4.34	0.90	0.80	0.83	0.83	0.00	0.00	0.03	3.13
Brazil	0.13	0.14	0.12	0.12	3.89	2.90	3.83	3.83	0.50	0.39	0.46	0.46	0.00	0.00	0.07	17.65
India	0.45	0.63	0.55	0.55	3.03	3.05	3.08	3.08	1.37	1.91	1.70	1.70	0.00	0.00	-0.21	-11.19
China	0.56	0.50	0.50	0.50	3.91	4.00	4.00	4.00	2.19	2.00	2.00	2.00	0.00	0.00	0.00	0.00
Mexico	0.30	0.29	0.29	0.29	2.69	2.69	2.69	2.69	0.80	0.78	0.78	0.78	0.00	0.00	0.00	0.00
Afghanistan	0.06	0.08	0.07	0.07	1.53	1.38	1.43	1.43	0.10	0.11	0.10	0.10	0.00	0.00	-0.01	-9.09
Others	1.67	1.67	1.70	1.69	2.58	2.55	2.63	2.64	4.30	4.25	4.46	4.47	0.02	0.34	0.22	5.12

World and Selected Countries and Regions

Table 06 Oats Area, Yield, and Production

Country / Region	Area (Million hectares)				Yield (Metric tons per hectare)				Production (Million metric tons)				Change in Production			
	2022/23	Prel.	2024/25 Proj.		2022/23	Prel.	2024/25 Proj.		2022/23	Prel.	2024/25 Proj.		From last month		From last year	
		2023/24	Nov	Dec		2023/24	Nov	Dec		2023/24	Nov	Dec	MMT	Percent	MMT	Percent
World	9.39	8.41	8.61	8.72	2.72	2.31	2.55	2.58	25.54	19.40	21.95	22.54	0.59	2.70	3.14	16.17
United States	0.36	0.34	0.36	0.36	2.35	2.46	2.74	2.74	0.84	0.83	0.98	0.98	0.00	0.00	0.16	18.84
Total Foreign	9.03	8.07	8.25	8.36	2.74	2.30	2.54	2.58	24.70	18.57	20.96	21.55	0.59	2.83	2.98	16.05
European Union	2.35	2.30	2.40	2.40	3.20	2.58	3.17	3.17	7.51	5.93	7.60	7.60	0.00	0.00	1.67	28.14
Former Soviet Union - 12																
Russia	2.13	1.77	1.70	1.70	2.11	1.86	1.91	1.91	4.50	3.30	3.25	3.25	0.00	0.00	-0.05	-1.52
Ukraine	0.15	0.17	0.17	0.17	2.47	2.53	2.35	2.35	0.38	0.43	0.40	0.40	0.00	0.00	-0.03	-6.98
Belarus	0.16	0.16	0.16	0.16	2.42	2.26	2.06	2.06	0.38	0.35	0.32	0.32	0.00	0.00	-0.03	-8.57
Kazakhstan	0.20	0.19	0.19	0.19	1.16	0.79	1.58	1.58	0.23	0.15	0.30	0.30	0.00	0.00	0.15	100.00
Canada	1.40	0.83	0.95	0.99	3.73	3.20	3.17	3.38	5.23	2.64	3.00	3.36	0.36	11.93	0.72	27.05
South America																
Argentina	0.26	0.28	0.30	0.30	1.67	2.03	2.00	2.00	0.43	0.57	0.60	0.60	0.00	0.00	0.04	6.19
Brazil	0.50	0.52	0.49	0.49	2.39	1.89	2.16	2.16	1.19	0.98	1.06	1.06	0.00	0.00	0.08	7.72
Chile	0.07	0.09	0.10	0.10	4.63	5.39	4.75	4.75	0.33	0.46	0.48	0.48	0.00	0.00	0.02	3.71
Uruguay	0.02	0.01	0.02	0.02	2.40	2.20	2.00	2.00	0.04	0.02	0.03	0.03	0.00	0.00	0.01	36.36
Oceania																
Australia	0.75	0.70	0.73	0.73	2.13	1.43	1.66	1.66	1.59	1.00	1.20	1.20	0.00	0.00	0.20	20.00
New Zealand	0.01	0.00	0.00	0.00	6.60	6.50	6.25	6.25	0.03	0.03	0.03	0.03	0.00	0.00	0.00	-3.85
China	0.43	0.46	0.41	0.47	1.84	1.83	1.48	1.83	0.79	0.84	0.60	0.85	0.25	41.67	0.01	1.19
Africa																
Algeria	0.08	0.08	0.08	0.08	1.31	1.31	1.31	1.31	0.11	0.11	0.11	0.11	0.00	0.00	0.00	0.00
Morocco	0.01	0.02	0.02	0.02	0.31	0.40	0.40	0.40	0.00	0.01	0.01	0.01	0.00	0.00	0.00	0.00
South Africa	0.03	0.03	0.03	0.03	1.04	1.46	2.33	1.83	0.03	0.04	0.07	0.06	-0.02	-21.43	0.01	34.15
Other Europe																
United Kingdom	0.18	0.17	0.20	0.20	5.72	4.97	5.00	5.00	1.01	0.83	1.00	1.00	0.00	0.00	0.17	20.48
Norway	0.06	0.07	0.07	0.07	4.62	4.29	4.29	4.29	0.29	0.30	0.30	0.30	0.00	0.00	0.00	0.00
Serbia	0.02	0.02	0.02	0.02	2.80	3.00	3.00	3.00	0.04	0.06	0.06	0.06	0.00	0.00	0.00	0.00
Albania	0.02	0.02	0.02	0.02	2.27	2.27	2.27	2.27	0.03	0.03	0.03	0.03	0.00	0.00	0.00	0.00
Bosnia and Herzegovina	0.01	0.01	0.01	0.01	4.00	3.43	3.43	3.43	0.04	0.02	0.02	0.02	0.00	0.00	0.00	0.00
Turkey	0.14	0.13	0.13	0.13	2.64	2.60	2.62	2.62	0.37	0.33	0.34	0.34	0.00	0.00	0.02	4.62
Mexico	0.05	0.03	0.04	0.04	2.22	2.20	2.00	2.00	0.11	0.06	0.08	0.08	0.00	0.00	0.03	45.45
Others	0.03	0.06	0.05	0.05	1.63	1.68	1.78	1.78	0.05	0.09	0.08	0.08	0.00	0.00	-0.01	-12.77

World and Selected Countries and Regions

Table 07 Rye Area, Yield, and Production

Country / Region	Area (Million hectares)				Yield (Metric tons per hectare)				Production (Million metric tons)				Change in Production						
	2022/23	Prel.		2024/25 Proj.		2022/23	Prel.		2024/25 Proj.		2022/23	Prel.		2024/25 Proj.		From last month		From last year	
		2023/24	Nov	Dec	2023/24		Nov	Dec	2023/24	Nov		Dec	MMT	Percent	MMT	Percent			
World	3.69	3.66	3.41	3.41	3.29	3.20	3.20	3.22	12.15	11.70	10.93	10.99	0.06	0.57	-0.72	-6.12			
United States	0.14	0.13	0.16	0.16	2.26	2.03	2.29	2.29	0.32	0.26	0.37	0.37	0.00	0.00	0.11	41.67			
Total Foreign	3.55	3.53	3.25	3.25	3.33	3.25	3.25	3.27	11.83	11.44	10.55	10.61	0.06	0.59	-0.83	-7.22			
European Union	1.77	1.88	1.75	1.75	4.26	4.06	4.11	4.11	7.55	7.63	7.20	7.20	0.00	0.00	-0.43	-5.67			
Former Soviet Union - 12																			
Russia	0.88	0.79	0.66	0.66	2.27	2.15	2.05	2.05	2.00	1.70	1.35	1.35	0.00	0.00	-0.35	-20.59			
Belarus	0.30	0.31	0.32	0.32	2.50	2.52	2.38	2.38	0.75	0.78	0.76	0.76	0.00	0.00	-0.02	-2.56			
Ukraine	0.10	0.08	0.07	0.07	3.15	3.00	2.86	2.86	0.32	0.24	0.20	0.20	0.00	0.00	-0.04	-16.67			
Kazakhstan	0.03	0.02	0.02	0.02	1.76	0.86	1.15	1.15	0.06	0.02	0.02	0.02	0.00	0.00	0.01	27.78			
Turkey	0.10	0.11	0.11	0.11	2.79	2.91	2.91	2.91	0.27	0.32	0.32	0.32	0.00	0.00	0.00	0.00			
Canada	0.15	0.12	0.12	0.12	3.42	3.09	3.03	3.60	0.52	0.36	0.36	0.42	0.06	17.60	0.06	17.60			
South America																			
Chile	0.00	0.00	0.00	0.00	5.00	0.00	0.00	0.00	0.01	0.00	0.00	0.00	0.00	100.00	0.00	100.00			
Argentina	0.11	0.12	0.11	0.11	1.66	1.85	1.76	1.76	0.18	0.22	0.19	0.19	0.00	0.00	-0.03	-15.14			
Other Europe																			
Bosnia and Herzegovina	0.00	0.00	0.00	0.00	3.00	3.00	3.00	3.00	0.01	0.01	0.01	0.01	0.00	0.00	0.00	-33.33			
Switzerland	0.00	0.00	0.00	0.00	5.00	5.00	5.00	5.00	0.01	0.01	0.01	0.01	0.00	0.00	0.00	0.00			
Serbia	0.01	0.01	0.01	0.01	3.00	3.33	3.00	3.00	0.02	0.02	0.02	0.02	0.00	0.00	0.00	-10.00			
Australia	0.05	0.05	0.05	0.05	0.71	0.71	0.71	0.71	0.03	0.03	0.03	0.03	0.00	0.00	0.00	0.00			
Others	0.05	0.04	0.04	0.04	2.47	2.32	2.20	2.12	0.12	0.10	0.09	0.09	0.00	-1.11	-0.01	-12.75			

World and Selected Countries and Regions

Table 08 Sorghum Area, Yield, and Production

Country / Region	Area (Million hectares)				Yield (Metric tons per hectare)				Production (Million metric tons)				Change in Production			
	Prel.		2024/25 Proj.		Prel.		2024/25 Proj.		Prel.		2024/25 Proj.		From last month		From last year	
	2022/23	2023/24	Nov	Dec	2022/23	2023/24	Nov	Dec	2022/23	2023/24	Nov	Dec	MMT	Percent	MMT	Percent
World	40.61	40.04	40.77	40.77	1.42	1.46	1.52	1.52	57.48	58.38	61.83	61.83	0.00	0.00	3.44	5.90
United States	1.85	2.48	2.14	2.14	2.58	3.26	3.82	3.82	4.77	8.07	8.15	8.15	0.00	0.00	0.08	0.94
Total Foreign	38.76	37.57	38.64	38.64	1.36	1.34	1.39	1.39	52.71	50.31	53.68	53.68	0.00	0.00	3.37	6.69
Africa																
Nigeria	5.70	5.70	6.10	6.10	1.19	1.12	1.13	1.13	6.81	6.40	6.90	6.90	0.00	0.00	0.50	7.81
Ethiopia	1.55	1.48	1.65	1.65	2.67	2.71	2.48	2.48	4.14	4.01	4.10	4.10	0.00	0.00	0.09	2.24
Sudan	7.24	5.99	6.00	6.00	0.72	0.51	0.67	0.67	5.25	3.06	4.00	4.00	0.00	0.00	0.95	30.93
Burkina Faso	1.96	1.90	1.90	1.90	1.03	0.98	1.00	1.00	2.01	1.86	1.90	1.90	0.00	0.00	0.04	2.21
Mali	1.64	1.50	1.50	1.50	0.97	1.02	1.00	1.00	1.58	1.53	1.50	1.50	0.00	0.00	-0.03	-1.83
Niger	3.79	3.70	3.70	3.70	0.55	0.46	0.51	0.51	2.10	1.70	1.90	1.90	0.00	0.00	0.20	11.76
Cameroon	0.74	0.74	0.74	0.74	1.62	1.62	1.62	1.62	1.20	1.20	1.20	1.20	0.00	0.00	0.00	0.00
Tanzania	1.00	1.00	1.00	1.00	1.00	1.00	1.00	1.00	1.00	1.00	1.00	1.00	0.00	0.00	0.00	0.00
Egypt	0.15	0.15	0.15	0.15	5.00	5.20	5.27	5.27	0.75	0.78	0.79	0.79	0.00	0.00	0.01	1.28
Uganda	0.32	0.32	0.32	0.32	0.90	0.83	0.84	0.84	0.29	0.27	0.27	0.27	0.00	0.00	0.00	1.50
Ghana	0.31	0.31	0.31	0.31	1.29	1.42	1.13	1.13	0.40	0.44	0.35	0.35	0.00	0.00	-0.09	-20.27
Mozambique	0.29	0.27	0.28	0.28	0.51	0.55	0.33	0.33	0.15	0.15	0.09	0.09	0.00	0.00	-0.06	-40.00
South Africa	0.03	0.04	0.04	0.04	2.76	2.25	3.25	3.25	0.09	0.09	0.13	0.13	0.00	0.00	0.04	44.44
Mexico	1.40	1.29	1.32	1.32	3.50	3.49	3.41	3.41	4.89	4.49	4.50	4.50	0.00	0.00	0.02	0.33
South America																
Argentina	0.50	0.62	0.85	0.85	3.22	3.99	4.24	4.24	1.61	2.49	3.60	3.60	0.00	0.00	1.11	44.75
Brazil	1.42	1.46	1.60	1.60	3.38	3.03	3.13	3.13	4.79	4.43	5.00	5.00	0.00	0.00	0.57	12.97
South Asia																
India	3.54	4.08	4.00	4.00	1.08	1.16	1.10	1.10	3.81	4.74	4.40	4.40	0.00	0.00	-0.34	-7.11
Pakistan	0.06	0.05	0.05	0.05	0.83	0.83	0.82	0.82	0.05	0.04	0.04	0.04	0.00	0.00	0.00	5.13
China	0.68	0.63	0.63	0.63	4.58	4.76	4.76	4.76	3.09	3.00	3.00	3.00	0.00	0.00	0.00	0.00
Australia	0.69	0.60	0.60	0.60	3.84	3.67	4.00	4.00	2.64	2.20	2.40	2.40	0.00	0.00	0.20	9.09
European Union	0.12	0.16	0.21	0.21	4.14	5.13	5.05	5.05	0.51	0.80	1.06	1.06	0.00	0.00	0.26	32.33
Others	5.65	5.59	5.69	5.69	0.98	1.01	0.97	0.97	5.54	5.66	5.55	5.55	0.00	0.00	-0.11	-1.96

World and Selected Countries and Regions

Table 09 Rice Area, Yield, and Production
World and Selected Countries and Regions

Country / Region	Area (Million hectares)				Yield (Metric tons per hectare)				Production (Million metric tons)				Change in Production			
	Prel.		2024/25 Proj.		Prel.		2024/25 Proj.		Prel.		2024/25 Proj.		From last month		From last year	
	2022/23	2023/24	Nov	Dec	2022/23	2023/24	Nov	Dec	2022/23	2023/24	Nov	Dec	MMT	Percent	MMT	Percent
World	165.69	166.12	168.79	168.68	4.66	4.70	4.72	4.73	516.73	522.65	533.81	533.68	-0.13	-0.02	11.04	2.11
United States	0.88	1.16	1.17	1.17	8.28	8.57	8.51	8.51	5.08	6.93	6.98	6.98	0.00	0.00	0.05	0.69
Total Foreign	164.81	164.97	167.62	167.51	4.64	4.67	4.70	4.70	511.65	515.71	526.83	526.70	-0.13	-0.02	10.99	2.13
East Asia																
China	29.45	28.95	29.00	29.00	7.08	7.14	7.19	7.19	145.95	144.62	146.00	146.00	0.00	0.00	1.38	0.95
Japan	1.50	1.48	1.46	1.46	6.86	6.78	6.92	6.92	7.48	7.30	7.35	7.35	0.00	0.00	0.05	0.73
Korea, South	0.73	0.71	0.70	0.70	6.87	6.92	6.93	6.80	3.76	3.70	3.66	3.59	-0.07	-1.97	-0.12	-3.16
Korea, North	0.54	0.54	0.54	0.54	3.87	4.18	4.18	4.18	1.36	1.47	1.47	1.47	0.00	0.00	0.00	0.00
South Asia																
India	47.83	47.83	50.00	50.00	4.26	4.32	4.35	4.35	135.76	137.83	145.00	145.00	0.00	0.00	7.18	5.21
Bangladesh	11.60	11.75	11.50	11.50	4.70	4.72	4.80	4.80	36.35	37.00	36.80	36.80	0.00	0.00	-0.20	-0.54
Pakistan	2.98	3.64	3.80	3.80	3.69	4.07	3.95	3.95	7.32	9.87	10.00	10.00	0.00	0.00	0.13	1.33
Nepal	1.45	1.44	1.55	1.45	3.79	3.98	3.74	3.79	3.65	3.81	3.87	3.67	-0.20	-5.17	-0.15	-3.83
Sri Lanka	1.15	1.16	1.15	1.15	3.61	4.22	4.48	4.48	2.83	3.33	3.50	3.50	0.00	0.00	0.17	5.04
Southeast Asia																
Indonesia	11.30	11.00	11.20	11.20	4.72	4.73	4.78	4.78	33.90	33.02	34.00	34.00	0.00	0.00	0.98	2.97
Vietnam	7.12	6.90	6.95	6.95	6.10	6.10	6.10	6.10	27.14	26.30	26.50	26.50	0.00	0.00	0.20	0.76
Thailand	11.07	10.65	10.70	10.70	2.86	2.85	2.85	2.85	20.91	20.00	20.10	20.10	0.00	0.00	0.10	0.50
Burma	6.80	6.80	6.80	6.80	2.71	2.73	2.72	2.72	11.80	11.90	11.85	11.85	0.00	0.00	-0.05	-0.42
Philippines	4.85	4.74	4.70	4.60	4.13	4.12	4.15	4.14	12.63	12.33	12.30	12.00	-0.30	-2.44	-0.33	-2.64
Cambodia	3.47	3.58	3.64	3.64	3.31	3.39	3.32	3.32	7.00	7.40	7.38	7.38	0.00	0.00	-0.02	-0.31
Laos	0.96	0.95	0.90	0.90	3.23	3.21	3.19	3.19	1.95	1.92	1.81	1.81	0.00	0.00	-0.11	-5.73
Malaysia	0.66	0.65	0.66	0.66	3.99	3.86	4.08	4.08	1.70	1.62	1.75	1.75	0.00	0.00	0.13	8.02
South America																
Brazil	1.48	1.61	1.60	1.70	6.78	6.60	6.89	6.92	6.82	7.20	7.50	8.00	0.50	6.67	0.80	11.11
Peru	0.42	0.43	0.43	0.43	8.34	8.52	8.60	8.60	2.40	2.50	2.55	2.55	0.00	0.00	0.05	2.00
Africa																
Egypt	0.60	0.63	0.67	0.67	8.70	8.70	8.44	8.44	3.60	3.78	3.90	3.90	0.00	0.00	0.12	3.17
Madagascar	1.60	1.60	1.60	1.60	2.87	2.88	2.88	2.88	2.93	2.94	2.94	2.94	0.00	0.00	0.00	0.00
Nigeria	3.50	3.60	3.50	3.50	2.45	2.47	2.37	2.37	5.41	5.61	5.23	5.23	0.00	0.00	-0.38	-6.74
European Union	0.33	0.35	0.40	0.39	6.09	6.50	6.78	6.62	1.29	1.44	1.72	1.67	-0.05	-2.62	0.24	16.45
Iran	0.57	0.57	0.57	0.57	5.32	5.30	5.32	5.32	2.00	2.00	2.00	2.00	0.00	0.00	0.01	0.25
Others	12.87	13.43	13.60	13.60	3.03	3.03	3.09	3.09	25.71	26.84	27.66	27.65	-0.01	-0.04	0.81	3.01

Yield is on a rough basis, before the milling process. Production is on a milled basis, after the milling process.

Table 10 Total Oilseed Area, Yield, and Production
World and Selected Countries and Regions

Country / Region	Area (Million hectares)				Yield (Metric tons per hectare)				Production (Million metric tons)				Change in Production			
	2022/23	Prel.	2024/25 Proj.		2022/23	Prel.	2024/25 Proj.		2022/23	Prel.	2024/25 Proj.		From last month		From last year	
		2023/24	Nov	Dec		2023/24	Nov	Dec		2023/24	Nov	Dec	MMT	Percent	MMT	Percent
World Total	--	--	--	--	--	--	--	--	637.40	657.49	682.22	683.38	1.16	0.17	25.89	3.94
Total Foreign	--	--	--	--	--	--	--	--	511.64	535.33	551.07	552.22	1.15	0.21	16.89	3.15
Oilseed, Copra	--	--	--	--	--	--	--	--	6.00	6.21	5.81	5.81	0.00	0.00	-0.40	-6.50
Oilseed, Palm Kernel	--	--	--	--	--	--	--	--	19.75	19.68	20.86	20.62	-0.24	-1.15	0.94	4.79
Major Oilseeds	267.75	271.76	275.50	276.25	2.28	2.32	2.38	2.38	611.64	631.61	655.55	656.95	1.40	0.21	25.35	4.01
United States	39.91	37.98	40.50	40.50	3.15	3.22	3.24	3.24	125.75	122.16	131.15	131.16	0.02	0.01	9.00	7.36
Foreign Oilseeds	227.84	233.77	235.00	235.75	2.13	2.18	2.23	2.23	485.89	509.44	524.41	525.79	1.39	0.26	16.35	3.21
South America	71.45	74.82	76.82	77.62	3.00	3.10	3.28	3.26	214.26	231.94	251.70	253.34	1.64	0.65	21.40	9.23
Brazil	46.46	48.08	49.56	49.59	3.59	3.30	3.54	3.54	166.77	158.64	175.57	175.60	0.03	0.02	16.96	10.69
Argentina	17.76	19.30	19.82	20.32	1.77	2.81	2.88	2.86	31.45	54.24	56.99	58.19	1.21	2.11	3.95	7.28
Paraguay	3.79	3.90	4.02	4.02	2.77	2.88	2.85	2.85	10.47	11.22	11.44	11.44	0.00	0.00	0.23	2.02
Bolivia	2.05	2.09	1.86	2.13	1.94	1.98	2.17	2.09	3.99	4.13	4.04	4.44	0.40	9.90	0.31	7.51
Uruguay	1.28	1.37	1.46	1.46	1.00	2.52	2.31	2.31	1.28	3.45	3.37	3.37	0.00	0.00	-0.08	-2.21
China	25.90	26.79	26.20	26.20	2.62	2.58	2.61	2.61	67.94	69.08	68.30	68.30	0.00	0.00	-0.78	-1.13
South Asia	43.63	44.49	44.06	44.06	1.04	1.03	1.06	1.07	45.22	46.00	46.86	47.29	0.43	0.91	1.29	2.80
India	40.19	40.28	40.28	40.28	1.03	1.00	1.04	1.06	41.29	40.37	42.08	42.51	0.43	1.01	2.14	5.30
Pakistan	2.51	2.99	2.51	2.51	1.06	1.27	1.22	1.22	2.67	3.81	3.05	3.05	0.00	0.00	-0.76	-19.91
European Union	12.32	12.29	11.93	11.95	2.61	2.71	2.52	2.45	32.13	33.34	30.08	29.27	-0.81	-2.69	-4.07	-12.20
United Kingdom	0.37	0.39	0.28	0.28	3.73	3.11	3.13	3.13	1.36	1.22	0.88	0.88	0.00	0.00	-0.34	-28.04
Former Soviet Union - 12	27.81	29.08	30.89	30.89	1.87	2.04	1.84	1.87	52.05	59.24	56.84	57.69	0.85	1.50	-1.54	-2.60
Russia	14.74	14.85	16.00	16.00	1.80	1.89	1.77	1.79	26.55	28.10	28.30	28.60	0.30	1.06	0.50	1.78
Ukraine	8.75	10.00	10.45	10.45	2.26	2.55	2.17	2.22	19.80	25.45	22.70	23.25	0.55	2.42	-2.20	-8.64
Uzbekistan	1.07	1.05	1.02	1.02	1.24	1.15	1.22	1.22	1.33	1.21	1.25	1.25	0.00	0.00	0.04	3.23
Canada	10.75	11.16	11.12	11.16	2.37	2.35	2.45	2.37	25.48	26.27	27.24	26.42	-0.82	-3.00	0.15	0.59
Africa	24.62	24.69	23.83	23.63	1.04	0.97	1.04	1.05	25.67	24.01	24.73	24.71	-0.02	-0.08	0.70	2.92
Nigeria	4.87	4.87	5.07	5.07	1.15	1.15	1.13	1.13	5.61	5.60	5.75	5.75	0.00	0.00	0.15	2.68
South Africa	1.88	1.87	1.92	1.92	2.02	1.51	2.04	2.04	3.80	2.82	3.91	3.91	0.00	0.00	1.10	38.88
Tanzania	1.36	1.47	1.44	1.44	0.91	0.89	0.87	0.87	1.23	1.31	1.25	1.25	0.00	0.00	-0.05	-4.13
Southeast Asia	3.11	3.07	3.04	3.04	1.38	1.38	1.39	1.39	4.30	4.25	4.24	4.24	0.00	0.00	-0.02	-0.38
Burma	1.98	1.97	1.98	1.98	1.22	1.24	1.26	1.26	2.40	2.44	2.50	2.50	0.00	0.00	0.06	2.25
Indonesia	0.87	0.84	0.81	0.81	1.52	1.49	1.48	1.48	1.32	1.26	1.20	1.20	0.00	0.00	-0.06	-4.38
Australia	4.61	4.04	3.80	3.91	2.13	1.81	1.80	1.78	9.82	7.30	6.84	6.96	0.12	1.75	-0.34	-4.70
Turkey	1.47	1.27	1.30	1.28	2.71	2.43	2.45	2.49	3.98	3.09	3.19	3.19	0.00	0.00	0.10	3.27
Others	1.81	1.70	1.73	1.73	2.03	2.20	2.04	2.04	3.67	3.72	3.52	3.52	0.00	0.00	-0.21	-5.56

World Total and Total Foreign: (Major Oilseeds plus copra and palm kernel) Major Oilseeds: (soybeans, sunflowerseeds, peanuts(inshell), cottonseed and rapeseed)

Table 11 Soybean Area, Yield, and Production

Country / Region	Area (Million hectares)				Yield (Metric tons per hectare)				Production (Million metric tons)				Change in Production			
	Prel.		2024/25 Proj.		Prel.		2024/25 Proj.		Prel.		2024/25 Proj.		From last month		From last year	
	2022/23	2023/24	Nov	Dec	2022/23	2023/24	Nov	Dec	2022/23	2023/24	Nov	Dec	MMT	Percent	MMT	Percent
World	137.33	140.38	145.83	146.49	2.75	2.81	2.92	2.92	378.16	394.87	425.40	427.14	1.73	0.41	32.26	8.17
United States	34.87	33.29	34.91	34.91	3.33	3.40	3.48	3.48	116.22	113.27	121.42	121.42	0.00	0.00	8.14	7.19
Total Foreign	102.46	107.09	110.92	111.58	2.56	2.63	2.74	2.74	261.94	281.60	303.99	305.72	1.73	0.57	24.12	8.56
South America																
Brazil	44.60	46.10	47.30	47.30	3.63	3.32	3.57	3.57	162.00	153.00	169.00	169.00	0.00	0.00	16.00	10.46
Argentina	14.40	16.37	16.90	17.30	1.74	2.95	3.02	3.01	25.00	48.21	51.00	52.00	1.00	1.96	3.79	7.86
Paraguay	3.65	3.75	3.85	3.85	2.81	2.93	2.91	2.91	10.25	11.00	11.20	11.20	0.00	0.00	0.20	1.82
Bolivia	1.82	1.85	1.61	1.88	2.01	2.05	2.30	2.19	3.67	3.80	3.70	4.10	0.40	10.81	0.30	7.89
Uruguay	0.93	1.22	1.30	1.30	0.75	2.62	2.38	2.38	0.70	3.20	3.10	3.10	0.00	0.00	-0.10	-3.13
East Asia																
China	10.24	10.47	10.50	10.50	1.98	1.99	1.97	1.97	20.28	20.84	20.70	20.70	0.00	0.00	-0.14	-0.67
Korea, South	0.06	0.07	0.07	0.07	2.03	2.07	2.06	2.06	0.13	0.14	0.14	0.14	0.00	0.00	0.00	0.71
Korea, North	0.16	0.16	0.16	0.16	1.15	1.15	1.15	1.15	0.18	0.18	0.18	0.18	0.00	0.00	0.00	0.00
Japan	0.15	0.16	0.16	0.16	1.60	1.59	1.64	1.64	0.24	0.25	0.26	0.26	0.00	0.00	0.01	4.86
India	13.08	13.20	13.50	13.50	0.95	0.90	0.93	0.93	12.41	11.88	12.58	12.58	0.00	0.00	0.71	5.95
Canada	2.12	2.26	2.30	2.29	3.09	3.09	3.13	3.30	6.54	6.98	7.20	7.57	0.37	5.11	0.59	8.41
Former Soviet Union - 12																
Russia	3.36	3.50	4.10	4.10	1.79	1.94	1.78	1.78	6.00	6.80	7.30	7.30	0.00	0.00	0.50	7.35
Ukraine	1.82	2.00	2.90	2.90	2.25	2.60	2.28	2.28	4.10	5.20	6.60	6.60	0.00	0.00	1.40	26.92
European Union	1.12	1.03	1.09	1.09	2.34	2.87	2.67	2.63	2.61	2.95	2.90	2.85	-0.05	-1.72	-0.10	-3.29
Southeast Asia																
Indonesia	0.33	0.32	0.31	0.31	1.18	1.17	1.16	1.16	0.39	0.38	0.36	0.36	0.00	0.00	-0.02	-4.00
Vietnam	0.03	0.03	0.03	0.03	1.60	1.61	1.62	1.62	0.05	0.05	0.04	0.04	0.00	0.00	0.00	-6.67
Thailand	0.03	0.03	0.03	0.03	1.63	1.63	1.63	1.63	0.05	0.05	0.05	0.05	0.00	0.00	0.00	0.00
Burma	0.13	0.12	0.12	0.12	1.04	1.04	1.04	1.04	0.13	0.13	0.12	0.12	0.00	0.00	-0.01	-4.00
Serbia	0.24	0.24	0.24	0.24	1.70	2.77	2.00	2.00	0.40	0.65	0.47	0.47	0.00	0.00	-0.18	-27.69
Mexico	0.12	0.09	0.13	0.13	1.52	2.06	1.68	1.68	0.18	0.19	0.21	0.21	0.00	0.00	0.03	13.51
Africa																
South Africa	1.15	1.15	1.16	1.16	2.41	1.60	2.42	2.42	2.77	1.84	2.80	2.80	0.00	0.00	0.96	52.17
Nigeria	1.20	1.15	1.35	1.35	0.98	1.00	0.96	0.96	1.18	1.15	1.30	1.30	0.00	0.00	0.15	13.04
Zambia	0.38	0.38	0.38	0.38	1.27	1.27	1.27	1.27	0.48	0.48	0.48	0.48	0.00	0.00	0.00	0.00
Uganda	0.22	0.24	0.25	0.25	0.80	0.81	0.82	0.82	0.17	0.19	0.20	0.20	0.00	0.00	0.01	3.09
Middle East																
Iran	0.08	0.07	0.07	0.07	2.27	2.36	2.43	2.43	0.17	0.17	0.17	0.17	0.00	0.00	0.01	3.03
Turkey	0.04	0.03	0.04	0.04	4.14	4.12	4.29	4.29	0.15	0.14	0.15	0.15	0.00	0.00	0.01	7.14
Others	1.03	1.12	1.12	1.12	1.67	1.60	1.58	1.59	1.72	1.78	1.77	1.79	0.02	0.90	0.01	0.34

World and Selected Countries and Regions

Table 12 Cottonseed Area, Yield, and Production

Country / Region	Area (Million hectares)				Yield (Metric tons per hectare)				Production (Million metric tons)				Change in Production			
	Prel.		2024/25 Proj.		Prel.		2024/25 Proj.		Prel.		2024/25 Proj.		From last month		From last year	
	2022/23	2023/24	Nov	Dec	2022/23	2023/24	Nov	Dec	2022/23	2023/24	Nov	Dec	MMT	Percent	MMT	Percent
World	31.13	30.53	30.43	30.31	1.36	1.35	1.38	1.41	42.36	41.30	42.10	42.61	0.51	1.21	1.31	3.16
United States	2.95	2.61	3.49	3.49	1.36	1.27	1.13	1.13	4.01	3.31	3.93	3.95	0.02	0.38	0.64	19.42
Total Foreign	28.18	27.92	26.93	26.81	1.36	1.36	1.42	1.44	38.36	38.00	38.17	38.66	0.49	1.29	0.67	1.75
South Asia																
India	12.93	12.68	11.80	11.80	0.86	0.85	0.86	0.90	11.17	10.78	10.19	10.61	0.43	4.17	-0.17	-1.57
Pakistan	1.80	2.40	2.00	2.00	0.94	1.26	1.19	1.19	1.69	3.03	2.38	2.38	0.00	0.00	-0.65	-21.41
China	3.10	2.85	2.85	2.85	3.89	3.76	3.88	3.88	12.05	10.72	11.05	11.05	0.00	0.00	0.33	3.11
Former Soviet Union - 12																
Uzbekistan	1.05	1.03	1.00	1.00	1.19	1.10	1.18	1.18	1.25	1.14	1.18	1.18	0.00	0.00	0.04	3.43
Turkmenistan	0.50	0.50	0.50	0.50	0.63	0.63	0.63	0.63	0.31	0.31	0.31	0.31	0.00	0.00	0.00	0.00
Tajikistan	0.18	0.17	0.18	0.18	1.31	1.16	1.08	1.08	0.24	0.19	0.20	0.20	0.00	0.00	0.00	1.56
Kazakhstan	0.13	0.12	0.12	0.12	0.87	1.00	0.98	0.98	0.11	0.12	0.12	0.12	0.00	0.00	0.00	0.00
South America																
Brazil	1.60	1.66	1.94	1.97	2.43	2.91	2.88	2.85	3.89	4.84	5.58	5.61	0.03	0.59	0.77	16.00
Argentina	0.51	0.62	0.55	0.60	0.84	0.98	1.09	1.09	0.43	0.61	0.60	0.66	0.06	9.15	0.05	7.54
Middle East																
Turkey	0.56	0.44	0.49	0.47	2.88	2.38	2.69	2.81	1.60	1.05	1.31	1.31	0.00	0.00	0.26	24.98
Syria	0.03	0.03	0.03	0.03	2.23	2.23	2.23	2.23	0.07	0.07	0.07	0.07	0.00	0.00	0.00	0.00
Iran	0.12	0.10	0.10	0.10	1.52	1.18	1.35	1.35	0.18	0.12	0.14	0.14	0.00	0.00	0.02	14.41
Australia	0.65	0.51	0.55	0.55	2.24	2.48	2.28	2.28	1.45	1.25	1.25	1.25	0.00	0.00	0.00	0.00
European Union	0.31	0.25	0.25	0.27	1.70	1.31	1.61	1.47	0.53	0.33	0.40	0.40	0.00	0.00	0.07	20.66
Africa																
Burkina Faso	0.62	0.46	0.47	0.35	0.35	0.46	0.42	0.48	0.21	0.21	0.20	0.17	-0.03	-17.09	-0.05	-21.80
Mali	0.60	0.71	0.70	0.63	0.35	0.53	0.48	0.48	0.21	0.38	0.34	0.30	-0.04	-10.91	-0.07	-19.47
Cameroon	0.23	0.24	0.24	0.23	1.29	1.54	1.38	1.48	0.30	0.37	0.33	0.34	0.02	4.62	-0.03	-8.11
Cote d'Ivoire	0.41	0.40	0.37	0.37	0.29	0.44	0.53	0.53	0.12	0.17	0.20	0.20	0.00	0.00	0.02	12.07
Benin	0.57	0.51	0.55	0.55	0.64	0.73	0.70	0.76	0.36	0.37	0.38	0.42	0.04	9.47	0.04	11.53
Tanzania	0.36	0.47	0.44	0.44	0.37	0.44	0.35	0.35	0.13	0.21	0.15	0.15	0.00	0.00	-0.05	-26.21
Egypt	0.14	0.10	0.13	0.13	0.92	0.96	0.99	0.99	0.13	0.10	0.13	0.13	0.00	0.00	0.03	34.38
Nigeria	0.27	0.27	0.27	0.27	0.56	0.56	0.56	0.56	0.15	0.15	0.15	0.15	0.00	0.00	0.00	0.00
Uganda	0.08	0.06	0.07	0.07	1.16	1.51	1.48	1.48	0.09	0.08	0.10	0.10	0.00	0.00	0.01	15.66
Zimbabwe	0.24	0.24	0.24	0.24	0.34	0.34	0.34	0.34	0.08	0.08	0.08	0.08	0.00	0.00	0.00	0.00
Sudan	0.20	0.20	0.20	0.20	1.53	1.53	1.53	1.53	0.31	0.31	0.31	0.31	0.00	0.00	0.00	0.00
Mexico	0.20	0.13	0.12	0.12	2.70	2.25	2.35	2.35	0.54	0.30	0.28	0.28	0.00	0.00	-0.02	-5.05
Burma	0.19	0.18	0.19	0.19	1.26	1.24	1.24	1.24	0.23	0.23	0.24	0.24	0.00	0.00	0.01	4.42
Others	0.62	0.61	0.60	0.60	0.84	0.81	0.88	0.88	0.53	0.49	0.53	0.53	0.00	0.00	0.04	7.93

World and Selected Countries and Regions

Table 13 Peanut Area, Yield, and Production

Country / Region	Area (Million hectares)				Yield (Metric tons per hectare)				Production (Million metric tons)				Change in Production			
	2022/23	Prel.	2024/25 Proj.		2022/23	Prel.	2024/25 Proj.		2022/23	Prel.	2024/25 Proj.		From last month		From last year	
		2023/24	Nov	Dec		2023/24	Nov	Dec		2023/24	Nov	Dec	MMT	Percent	MMT	Percent
World	29.04	29.60	28.95	29.00	1.70	1.67	1.74	1.74	49.44	49.52	50.37	50.52	0.15	0.30	1.00	2.02
United States	0.56	0.63	0.71	0.71	4.50	4.23	4.17	4.17	2.51	2.67	2.95	2.95	0.00	0.00	0.29	10.80
Total Foreign	28.48	28.97	28.24	28.29	1.65	1.62	1.68	1.68	46.93	46.85	47.41	47.56	0.15	0.32	0.71	1.52
China	4.68	4.98	4.85	4.85	3.91	3.86	3.92	3.92	18.33	19.22	19.00	19.00	0.00	0.00	-0.22	-1.13
Africa																
Nigeria	3.40	3.45	3.45	3.45	1.26	1.25	1.25	1.25	4.28	4.30	4.30	4.30	0.00	0.00	0.00	0.00
Sudan	3.07	3.01	2.00	2.00	0.86	0.46	0.50	0.50	2.64	1.39	1.00	1.00	0.00	0.00	-0.39	-27.85
Senegal	1.23	1.25	1.25	1.25	1.23	1.38	1.36	1.36	1.50	1.73	1.70	1.70	0.00	0.00	-0.03	-1.62
Cameroon	0.43	0.43	0.43	0.43	1.40	1.40	1.40	1.40	0.60	0.60	0.60	0.60	0.00	0.00	0.00	0.00
Ghana	0.37	0.37	0.35	0.35	1.65	1.62	1.57	1.57	0.61	0.60	0.55	0.55	0.00	0.00	-0.05	-8.33
Chad	0.76	0.76	0.76	0.76	1.10	1.09	1.09	1.09	0.83	0.83	0.83	0.83	0.00	0.00	0.00	0.00
Malawi	0.40	0.40	0.40	0.40	0.88	0.88	0.88	0.88	0.35	0.35	0.35	0.35	0.00	0.00	0.00	0.00
Congo (Kinshasa)	0.53	0.53	0.53	0.53	0.91	0.91	0.91	0.91	0.48	0.48	0.48	0.48	0.00	0.00	0.00	0.00
Niger	0.97	0.92	0.92	0.92	0.69	0.65	0.65	0.65	0.67	0.60	0.60	0.60	0.00	0.00	0.00	0.00
Mali	0.43	0.43	0.43	0.43	1.04	1.00	1.00	1.00	0.44	0.43	0.43	0.43	0.00	0.00	0.00	0.00
Uganda	0.46	0.44	0.44	0.44	0.50	0.50	0.50	0.50	0.23	0.22	0.22	0.22	0.00	0.00	0.00	0.00
Burkina Faso	0.63	0.64	0.64	0.64	0.89	0.90	0.90	0.90	0.56	0.58	0.58	0.58	0.00	0.00	0.00	0.00
Guinea	0.90	0.90	0.90	0.90	1.14	1.11	1.11	1.11	1.03	1.00	1.00	1.00	0.00	0.00	0.00	0.00
Egypt	0.06	0.06	0.06	0.06	3.20	3.20	3.20	3.20	0.21	0.21	0.21	0.21	0.00	0.00	0.00	0.00
Central African Republic	0.13	0.13	0.13	0.13	1.15	1.15	1.15	1.15	0.15	0.15	0.15	0.15	0.00	0.00	0.00	0.00
South Africa	0.03	0.04	0.04	0.04	2.29	1.75	2.00	2.00	0.07	0.07	0.08	0.08	0.00	0.00	0.01	14.29
Mozambique	0.38	0.38	0.38	0.38	0.34	0.34	0.34	0.34	0.13	0.13	0.13	0.13	0.00	0.00	0.00	0.00
Cote d'Ivoire	0.17	0.17	0.17	0.17	1.47	1.45	1.45	1.45	0.24	0.24	0.24	0.24	0.00	0.00	0.00	0.00
Benin	0.16	0.24	0.18	0.18	1.03	0.74	0.97	0.97	0.16	0.18	0.18	0.18	0.00	0.00	0.00	-2.23
South Asia																
India	4.96	5.00	5.50	5.50	1.27	1.20	1.29	1.29	6.30	6.00	7.10	7.10	0.00	0.00	1.10	18.33
Pakistan	0.13	0.13	0.13	0.13	0.88	0.88	0.88	0.88	0.12	0.12	0.12	0.12	0.00	0.00	0.00	0.00
Southeast Asia																
Indonesia	0.54	0.52	0.50	0.50	1.72	1.69	1.68	1.68	0.93	0.88	0.84	0.84	0.00	0.00	-0.04	-4.55
Burma	1.07	1.07	1.08	1.08	1.55	1.59	1.63	1.63	1.65	1.70	1.75	1.75	0.00	0.00	0.05	2.94
Vietnam	0.15	0.15	0.14	0.14	2.63	2.62	2.64	2.64	0.40	0.38	0.37	0.37	0.00	0.00	-0.01	-3.39
Thailand	0.02	0.02	0.02	0.02	1.67	1.67	1.67	1.67	0.04	0.04	0.04	0.04	0.00	0.00	0.00	0.00
South America																
Argentina	0.37	0.43	0.40	0.45	2.59	3.43	3.38	3.33	0.96	1.48	1.35	1.50	0.15	11.11	0.02	1.15
Brazil	0.20	0.26	0.26	0.26	3.95	2.88	3.46	3.46	0.79	0.73	0.90	0.90	0.00	0.00	0.17	22.62
Mexico	0.05	0.05	0.05	0.05	1.76	1.74	1.70	1.70	0.09	0.08	0.09	0.09	0.00	0.00	0.01	6.25
Others	1.80	1.81	1.85	1.85	1.18	1.19	1.21	1.21	2.13	2.15	2.25	2.25	0.00	0.00	0.10	4.70

Table 14 Sunflowerseed Area, Yield, and Production

Country / Region	Area (Million hectares)				Yield (Metric tons per hectare)				Production (Million metric tons)				Change in Production						
	2022/23	Prel.		2024/25 Proj.		2022/23	Prel.		2024/25 Proj.		2022/23	Prel.		2024/25 Proj.		From last month		From last year	
		2023/24	Nov	Dec	2023/24		Nov	Dec	2023/24	Nov		Dec	MMT	Percent	MMT	Percent			
World	28.30	27.94	27.79	27.79	1.87	2.01	1.82	1.82	52.78	56.03	50.44	50.51	0.07	0.13	-5.52	-9.85			
United States	0.65	0.51	0.28	0.28	1.97	2.00	2.12	2.12	1.27	1.02	0.59	0.59	0.00	0.00	-0.43	-42.19			
Total Foreign	27.65	27.43	27.51	27.51	1.86	2.01	1.81	1.81	51.51	55.01	49.85	49.92	0.07	0.14	-5.09	-9.24			
Former Soviet Union - 12																			
Russia	9.11	9.30	9.30	9.30	1.78	1.84	1.72	1.75	16.25	17.10	16.00	16.30	0.30	1.88	-0.80	-4.68			
Ukraine	5.70	6.40	6.20	6.20	2.14	2.42	2.02	2.08	12.20	15.50	12.50	12.90	0.40	3.20	-2.60	-16.77			
Kazakhstan	1.09	1.13	1.25	1.25	1.20	1.10	1.12	1.12	1.30	1.24	1.40	1.40	0.00	0.00	0.16	13.27			
European Union	4.97	4.80	4.91	4.91	1.89	2.11	1.92	1.79	9.39	10.13	9.43	8.78	-0.65	-6.89	-1.35	-13.28			
South America																			
Argentina	2.45	1.84	1.95	1.95	2.05	2.11	2.05	2.05	5.02	3.90	4.00	4.00	0.00	0.00	0.11	2.70			
Uruguay	0.01	0.01	0.01	0.01	0.91	0.92	1.00	1.00	0.01	0.01	0.01	0.01	0.00	0.00	0.00	-9.09			
Bolivia	0.23	0.24	0.25	0.25	1.39	1.38	1.36	1.36	0.32	0.33	0.34	0.34	0.00	0.00	0.01	3.03			
Brazil	0.06	0.06	0.06	0.06	1.52	1.18	1.50	1.50	0.09	0.07	0.09	0.09	0.00	0.00	0.02	26.76			
Paraguay	0.03	0.02	0.03	0.03	1.64	1.63	1.60	1.60	0.04	0.04	0.04	0.04	0.00	0.00	0.00	2.56			
China	0.62	0.70	0.60	0.60	2.79	2.83	2.92	2.92	1.74	1.98	1.75	1.75	0.00	0.00	-0.23	-11.75			
South Asia																			
India	0.36	0.15	0.18	0.18	0.59	0.75	0.63	0.63	0.22	0.11	0.11	0.11	0.00	0.00	0.00	0.89			
Pakistan	0.07	0.08	0.08	0.08	1.72	1.35	1.31	1.31	0.12	0.11	0.11	0.11	0.00	0.00	0.00	-2.78			
Middle East																			
Turkey	0.79	0.70	0.69	0.69	2.41	2.21	1.99	1.99	1.90	1.55	1.38	1.38	0.00	0.00	-0.18	-11.29			
Iran	0.04	0.04	0.04	0.04	1.02	1.05	1.07	1.07	0.04	0.04	0.05	0.05	0.00	0.00	0.00	4.65			
Israel	0.00	0.00	0.00	0.00	2.00	2.00	4.00	4.00	0.00	0.00	0.00	0.00	0.00	0.00	0.00	100.00			
Africa																			
Egypt	0.01	0.01	0.01	0.01	2.75	2.63	2.75	2.75	0.02	0.02	0.02	0.02	0.00	0.00	0.00	4.76			
Morocco	0.03	0.02	0.02	0.02	1.11	1.27	1.17	1.17	0.03	0.03	0.03	0.03	0.00	0.00	0.00	0.00			
South Africa	0.56	0.53	0.54	0.54	1.29	1.20	1.30	1.30	0.72	0.64	0.70	0.70	0.00	0.00	0.07	10.24			
Burma	0.60	0.60	0.60	0.60	0.65	0.65	0.65	0.65	0.39	0.39	0.39	0.39	0.00	0.00	0.00	0.00			
Canada	0.04	0.04	0.02	0.02	2.21	2.30	2.06	2.13	0.08	0.09	0.04	0.05	0.01	37.84	-0.04	-44.57			
Australia	0.03	0.03	0.02	0.02	1.48	1.28	1.50	1.55	0.04	0.03	0.03	0.03	0.00	13.33	0.00	6.25			
Others	0.86	0.73	0.75	0.75	1.83	2.33	1.92	1.92	1.58	1.70	1.44	1.44	0.00	0.00	-0.26	-15.22			

World and Selected Countries and Regions

Table 15 Rapeseed Area, Yield, and Production

Country / Region	Area (Million hectares)				Yield (Metric tons per hectare)				Production (Million metric tons)				Change in Production			
	Prel.		2024/25 Proj.		Prel.		2024/25 Proj.		Prel.		2024/25 Proj.		From last month		From last year	
	2022/23	2023/24	Nov	Dec	2022/23	2023/24	Nov	Dec	2022/23	2023/24	Nov	Dec	MMT	Percent	MMT	Percent
World	41.95	43.31	42.51	42.66	2.12	2.08	2.05	2.02	88.90	89.89	87.24	86.18	-1.06	-1.22	-3.71	-4.12
United States	0.88	0.94	1.11	1.11	1.98	2.01	2.03	2.03	1.74	1.90	2.25	2.25	0.00	0.00	0.36	18.73
Total Foreign	41.07	42.36	41.40	41.55	2.12	2.08	2.05	2.02	87.17	87.99	84.99	83.93	-1.06	-1.25	-4.06	-4.61
European Union	5.92	6.21	5.69	5.69	3.31	3.21	3.05	3.03	19.61	19.93	17.35	17.24	-0.11	-0.63	-2.69	-13.51
United Kingdom	0.37	0.39	0.28	0.28	3.73	3.11	3.13	3.13	1.36	1.22	0.88	0.88	0.00	0.00	-0.34	-28.04
Switzerland	0.03	0.03	0.03	0.03	3.68	3.52	3.52	3.52	0.09	0.09	0.09	0.09	0.00	0.00	0.00	0.00
Canada	8.60	8.86	8.80	8.85	2.19	2.17	2.27	2.12	18.85	19.19	20.00	18.80	-1.20	-6.00	-0.39	-2.04
China	7.25	7.79	7.40	7.40	2.14	2.10	2.14	2.14	15.53	16.32	15.80	15.80	0.00	0.00	-0.52	-3.19
South Asia																
India	8.85	9.25	9.30	9.30	1.27	1.25	1.30	1.30	11.20	11.60	12.10	12.10	0.00	0.00	0.50	4.31
Pakistan	0.51	0.38	0.30	0.30	1.46	1.46	1.50	1.50	0.74	0.56	0.45	0.45	0.00	0.00	-0.11	-19.21
Bangladesh	0.81	1.10	1.10	1.10	1.30	1.46	1.30	1.30	1.05	1.61	1.43	1.43	0.00	0.00	-0.18	-11.01
Former Soviet Union - 12																
Russia	2.27	2.05	2.60	2.60	1.89	2.05	1.92	1.92	4.30	4.20	5.00	5.00	0.00	0.00	0.80	19.05
Ukraine	1.23	1.60	1.35	1.35	2.85	2.97	2.67	2.78	3.50	4.75	3.60	3.75	0.15	4.17	-1.00	-21.05
Belarus	0.36	0.40	0.48	0.48	2.22	2.25	2.25	2.25	0.80	0.90	1.08	1.08	0.00	0.00	0.18	20.00
Kazakhstan	0.13	0.09	0.15	0.15	1.48	1.32	1.33	1.33	0.19	0.12	0.20	0.20	0.00	0.00	0.08	62.60
Australia	3.90	3.48	3.20	3.30	2.12	1.71	1.72	1.70	8.27	5.94	5.50	5.60	0.10	1.82	-0.34	-5.66
South America																
Chile	0.03	0.03	0.04	0.04	3.73	4.39	3.86	3.86	0.12	0.12	0.14	0.14	0.00	0.00	0.01	9.76
Paraguay	0.07	0.07	0.08	0.08	1.77	1.50	1.53	1.53	0.12	0.11	0.12	0.12	0.00	0.00	0.01	9.52
Ethiopia	0.03	0.03	0.03	0.03	1.80	1.80	1.80	1.80	0.05	0.05	0.05	0.05	0.00	0.00	0.00	0.00
Others	0.72	0.62	0.59	0.59	1.91	2.10	2.06	2.06	1.38	1.29	1.22	1.22	0.00	0.00	-0.07	-5.49

World and Selected Countries and Regions

Table 16 Copra, Palm Kernel, and Palm Oil Production

Country / Region	Production (Million metric tons)				Change in Production			
	2022/23	Prel.	2024/25 Proj.		From last month		From last year	
		2023/24	Nov	Dec	MMT	Percent	MMT	Percent
Oilseed, Copra								
Philippines	2.60	2.90	2.50	2.50	0.00	0.00	-0.40	-13.79
Indonesia	1.68	1.69	1.68	1.68	0.00	0.00	-0.01	-0.59
India	0.94	0.94	0.94	0.94	0.00	0.00	0.00	0.00
Vietnam	0.29	0.29	0.29	0.29	0.00	0.00	0.00	0.00
Papua New Guinea	0.10	0.09	0.10	0.10	0.00	0.00	0.01	11.11
Sri Lanka	0.07	0.07	0.07	0.07	0.00	0.00	0.00	0.00
Thailand	0.07	0.07	0.07	0.07	0.00	0.00	0.00	0.00
Mexico	0.05	0.05	0.05	0.05	0.00	0.00	0.00	0.00
Cote d'Ivoire	0.03	0.03	0.03	0.03	0.00	0.00	0.00	0.00
Malaysia	0.03	0.03	0.03	0.03	0.00	0.00	0.00	0.00
World	6.00	6.21	5.81	5.81	0.00	0.00	-0.40	-6.44
Oilseed, Palm Kernel								
Indonesia	11.70	11.00	12.09	12.09	0.00	0.00	1.09	9.91
Malaysia	4.49	4.83	4.85	4.63	-0.22	-4.54	-0.20	-4.14
Nigeria	0.90	1.10	1.10	1.10	0.00	0.00	0.00	0.00
Thailand	0.86	0.94	0.96	0.96	0.00	0.00	0.02	2.13
Colombia	0.32	0.33	0.35	0.33	-0.02	-5.71	0.01	3.13
Guatemala	0.18	0.18	0.19	0.19	0.00	0.00	0.00	0.00
Papua New Guinea	0.17	0.18	0.18	0.18	0.00	0.00	0.00	0.00
Brazil	0.15	0.16	0.16	0.16	0.00	0.00	0.00	0.00
Honduras	0.16	0.16	0.16	0.16	0.00	0.00	0.00	0.00
Cameroon	0.15	0.15	0.15	0.15	0.00	0.00	0.00	0.00
World	19.75	19.68	20.86	20.62	-0.24	-1.15	0.94	4.78
Oil, Palm								
Indonesia	45.00	43.00	46.50	46.50	0.00	0.00	3.50	8.14
Malaysia	18.39	19.71	19.80	19.30	-0.50	-2.53	-0.41	-2.08
Thailand	3.33	3.60	3.70	3.70	0.00	0.00	0.10	2.78
Colombia	1.85	1.88	1.95	1.90	-0.05	-2.56	0.02	1.06
Nigeria	1.40	1.50	1.50	1.50	0.00	0.00	0.00	0.00
Guatemala	1.01	0.89	0.99	0.99	0.00	0.00	0.10	11.24
Papua New Guinea	0.80	0.82	0.83	0.83	0.00	0.00	0.01	1.22
Cote d'Ivoire	0.60	0.60	0.60	0.60	0.00	0.00	0.00	0.00
Honduras	0.60	0.60	0.60	0.60	0.00	0.00	0.00	0.00
Brazil	0.57	0.59	0.60	0.60	0.00	0.00	0.02	3.45
World	76.63	76.26	80.18	79.63	-0.55	-0.69	3.37	4.42

World and Selected Countries and Regions

Table 17 Cotton Area, Yield, and Production

Country / Region	Area (Million hectares)				Yield (Kilograms per hectare)				Production (Million 480 lb. bales)				Change in Production			
	2022/23	Prel.	2024/25 Proj.		2022/23	Prel.	2024/25 Proj.		2022/23	Prel.	2024/25 Proj.		From last month		From last year	
		2023/24	Nov	Dec		2023/24	Nov	Dec		2023/24	Nov	Dec	MBales	Percent	MBales	Percent
World	31.60	31.17	31.02	30.90	801	789	815	827	116.30	112.98	116.18	117.39	1.21	1.04	4.41	3.90
United States	2.95	2.61	3.49	3.49	1,068	1,008	884	888	14.47	12.07	14.19	14.26	0.06	0.45	2.19	18.14
Total Foreign	28.65	28.57	27.53	27.41	774	769	807	819	101.83	100.92	101.99	103.13	1.15	1.12	2.22	2.20
South Asia																
India	12.93	12.68	11.80	11.80	443	436	443	461	26.30	25.40	24.00	25.00	1.00	4.17	-0.40	-1.57
Pakistan	1.80	2.40	2.00	2.00	472	635	599	599	3.90	7.00	5.50	5.50	0.00	0.00	-1.50	-21.43
China	3.10	2.85	2.85	2.85	2,160	2,089	2,154	2,154	30.75	27.35	28.20	28.20	0.00	0.00	0.85	3.11
South America																
Brazil	1.60	1.66	1.94	1.97	1,595	1,911	1,885	1,868	11.72	14.57	16.80	16.90	0.10	0.60	2.33	15.99
Argentina	0.51	0.62	0.55	0.60	495	578	643	644	1.17	1.65	1.63	1.78	0.15	9.23	0.13	7.58
Paraguay	0.05	0.06	0.07	0.07	890	812	837	837	0.18	0.21	0.25	0.25	0.00	0.00	0.05	21.95
Africa																
Burkina Faso	0.62	0.46	0.47	0.35	273	361	334	379	0.78	0.77	0.72	0.60	-0.12	-16.67	-0.17	-21.57
Mali	0.60	0.71	0.70	0.63	269	407	373	373	0.74	1.33	1.20	1.07	-0.13	-10.83	-0.26	-19.43
Cote d'Ivoire	0.41	0.40	0.37	0.37	236	358	430	430	0.45	0.65	0.73	0.73	0.00	0.00	0.08	12.31
Benin	0.57	0.51	0.55	0.55	418	482	459	503	1.10	1.13	1.15	1.26	0.11	9.57	0.13	11.50
Egypt	0.14	0.10	0.13	0.13	661	686	712	712	0.43	0.32	0.43	0.43	0.00	0.00	0.11	34.92
Cameroon	0.23	0.24	0.24	0.23	563	671	602	644	0.60	0.74	0.65	0.68	0.03	4.62	-0.06	-8.11
Tanzania	0.36	0.47	0.44	0.44	184	220	173	173	0.31	0.47	0.35	0.35	0.00	0.00	-0.12	-25.53
Nigeria	0.27	0.27	0.27	0.27	282	282	282	282	0.35	0.35	0.35	0.35	0.00	0.00	0.00	0.00
Zimbabwe	0.24	0.24	0.24	0.24	195	195	195	195	0.22	0.22	0.22	0.22	0.00	0.00	0.00	0.00
Ethiopia	0.05	0.06	0.06	0.06	726	713	713	713	0.18	0.18	0.18	0.18	0.00	0.00	0.00	0.00
Former Soviet Union - 12																
Uzbekistan	1.05	1.03	1.00	1.00	663	613	653	653	3.20	2.90	3.00	3.00	0.00	0.00	0.10	3.45
Turkmenistan	0.50	0.50	0.50	0.50	348	348	348	348	0.80	0.80	0.80	0.80	0.00	0.00	0.00	0.00
Tajikistan	0.18	0.17	0.18	0.18	726	647	605	605	0.60	0.49	0.50	0.50	0.00	0.00	0.01	2.04
Kazakhstan	0.13	0.12	0.12	0.12	487	558	544	544	0.28	0.30	0.30	0.30	0.00	0.00	0.00	0.00
Middle East																
Turkey	0.56	0.44	0.49	0.47	1,922	1,583	1,796	1,873	4.90	3.20	4.00	4.00	0.00	0.00	0.80	25.00
Syria	0.03	0.03	0.03	0.03	1,161	1,161	1,161	1,161	0.16	0.16	0.16	0.16	0.00	0.00	0.00	0.00
Iran	0.12	0.10	0.10	0.10	977	762	871	871	0.53	0.35	0.40	0.40	0.00	0.00	0.05	14.29
Australia	0.65	0.51	0.55	0.55	1,943	2,156	1,979	1,979	5.80	5.00	5.00	5.00	0.00	0.00	0.00	0.00
Mexico	0.20	0.13	0.12	0.12	1,720	1,435	1,497	1,497	1.58	0.87	0.83	0.83	0.00	0.00	-0.05	-5.17
Burma	0.19	0.18	0.19	0.19	664	654	654	654	0.56	0.55	0.57	0.57	0.00	0.00	0.02	4.39
Others	1.58	1.65	1.59	1.62	590	525	558	551	4.27	3.98	4.09	4.09	0.01	0.12	0.11	2.79

World and Selected Countries and Regions

TABLE 18

The table below presents a record of the December projection and the final estimate. Using world wheat production as an example, the "root mean square error" means that chances are 2 out of 3 that the current forecast will not be above or below the final estimate by more than 0.8 percent. Chances are 9 out of 10 (90% confidence level) that the difference will not exceed 1.3 percent. The average difference between the December projection and the final estimate is 3.9 million tons, ranging from 0.4 million to 10.2 million tons. The December projection has been below the estimate 32 times and above 11 times.

RELIABILITY OF PRODUCTION PROJECTIONS 1/

COMMODITY AND REGION	Root mean square error	90 percent confidence interval	Difference between forecast and final estimate				
			Average	Smallest	Largest	Years	
						Below final	Above final
	Percent		---Million metric tons---				
WHEAT							
World	0.8	1.3	3.9	0.4	10.2	32	11
U.S.	0.4	0.7	0.2	0.0	1.2	21	15
Foreign	0.9	1.5	3.9	0.3	10.3	32	11
COARSE GRAINS 2/							
World	1.4	2.3	11.9	0.0	36.0	31	12
U.S.	1.3	2.2	2.6	0.0	9.9	20	23
Foreign	2.0	3.3	11.7	0.0	37.5	31	12
RICE (Milled)							
World	1.9	3.2	5.7	0.0	16.2	35	8
U.S.	2.8	4.7	0.1	0.0	0.5	20	18
Foreign	1.9	3.2	5.7	0.1	16.2	36	7
SOYBEANS							
World	3.8	6.4	6.2	0.1	26.2	22	21
U.S.	2.0	3.3	1.2	0.1	4.7	19	24
Foreign	6.2	10.5	6.2	0.1	27.3	19	24
COTTON			---Million 480-lb. bales---				
World	3.1	5.2	2.3	0.0	7.2	25	17
U.S.	2.6	4.4	0.3	0.0	1.3	19	23
Foreign	3.6	6.1	2.2	0.0	7.1	24	18
UNITED STATES			-----Million bushels-----				
<i>CORN</i>	1.3	2.2	97	0	396	21	21
<i>SORGHUM</i>	5.6	9.5	15	1	53	21	22
<i>BARLEY</i>	1.5	2.6	3	0	24	21	10
<i>OATS</i>	1.1	1.8	2	0	18	8	9

1/ Marketing years 1981/82 through 2023/24 for grains, soybeans, and cotton. Final for grains, soybeans, and cotton is defined as the first November estimate following the marketing year for 1981/82 through 2022/23, and for 2023/24 the last month's estimate.

2/ Includes corn, sorghum, barley, oats, rye, millet, and mixed grain.