



United States  
Department of  
Agriculture

Foreign  
Agricultural  
Service

Circular Series  
WAP 11-24  
November 2024

# World Agricultural Production

## Kazakhstan Wheat: Production Revised Up Based on Harvest Data

Kazakhstan wheat production for marketing year 2024/25 is estimated at 18.0 million metric tons (mmt), up 13 percent from last month and 49 percent from last year. Total wheat yield is estimated at 1.38 tons per hectare (t/ha), up 12 percent from last month and 50 percent from last year. Total harvested area is estimated at 13.0 million hectares (mha), unchanged from last month and down 1 percent from last year.

### North Kazakhstan, Kazakhstan: Wheat Areas, True Color Visualization

2024 Peak and Harvest Seasons  
Image Center: (69.105, 53.89)



A: Peak Season



Imagery Composite Window: July 15-Aug 10

B: Harvest



Imagery Composite Window: September 10-30

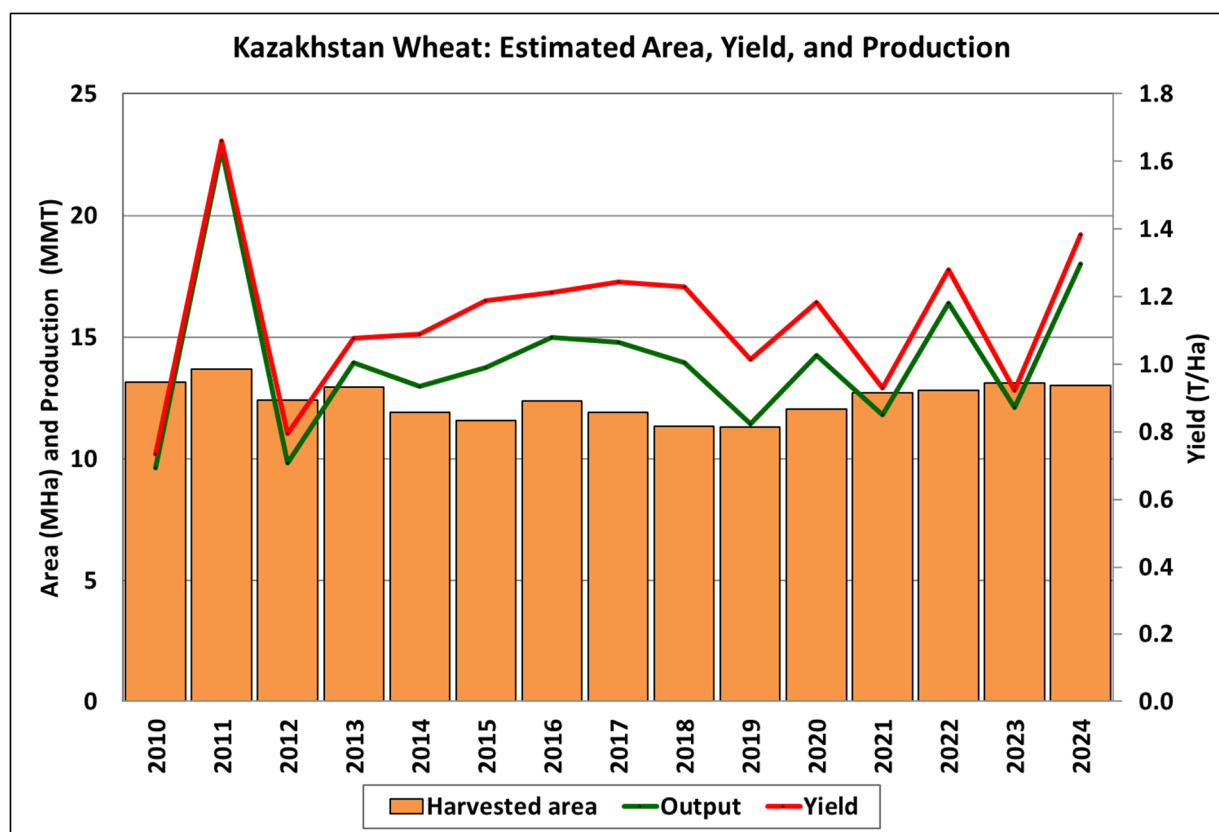
The green colors visible in the left image (A) show peak season healthy vegetation, while the brown colors dominant in the right harvest image (B) indicate bare fields.

Based on satellite data, harvest is complete across the key grain producing oblasts in Kazakhstan; this is in line with the operational harvest data from the Ministry of Agriculture of the Republic of Kazakhstan.

Source: Copernicus Sentinel-2 Data 2024, 10m

The month-to-month increase in production is based on the official operational harvest data released by the Ministry of Agriculture (MinAg) of the Republic of Kazakhstan. According to MinAg, harvest is virtually complete as of October 17, 2024. Satellite-based imagery agrees with MinAg and indicates that wheat harvest across all major grain producing oblasts in Kazakhstan is complete.

Approved by the World Agricultural Outlook Board

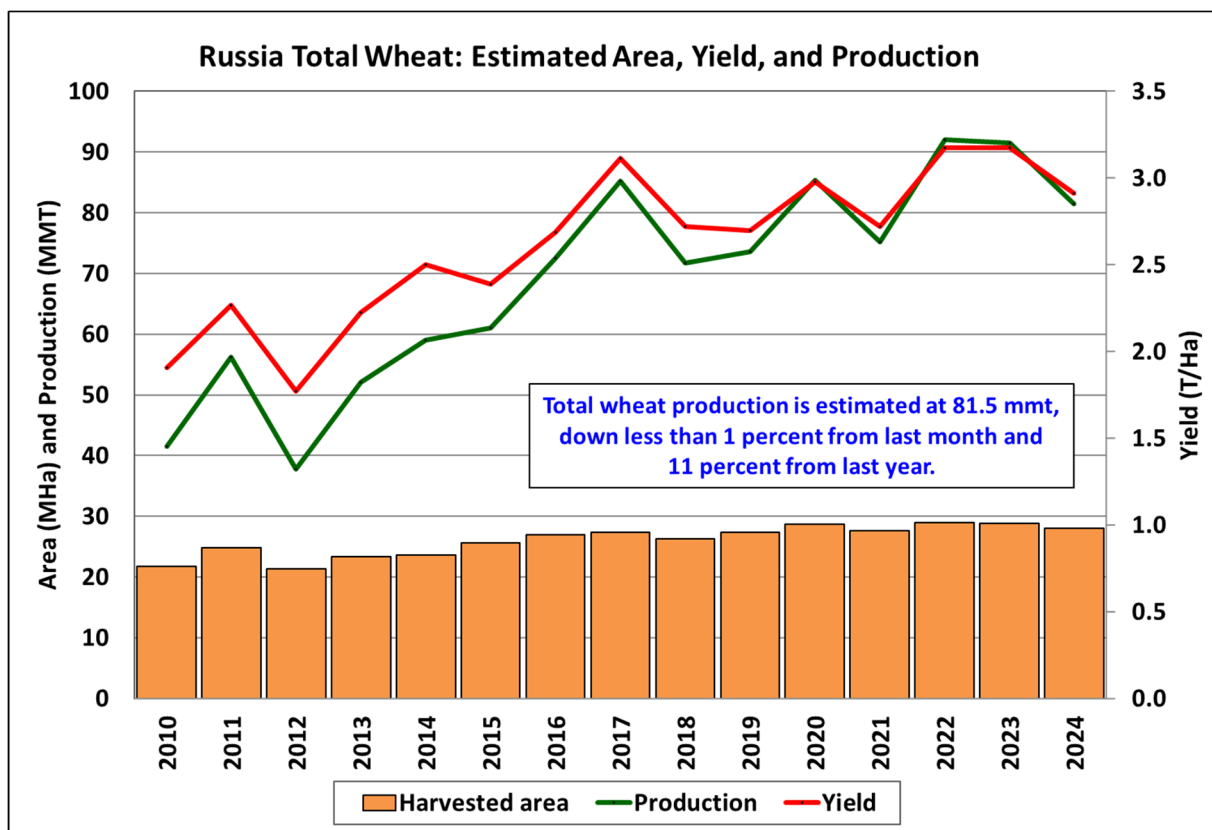


Source: USDA PSD Online

To date, 19.4 mmt of wheat in bunker weight has been harvested from an area of 13.0 mha. USDA reports net weight after converting from bunker weight. Wheat is primarily grown in the northern oblasts of North Kazakhstan, Qostanay, and Aqmola. Abundant precipitation aided crop development this season, which in turn led to the second-highest yield on record. While wetter-than-average conditions and overall cooler-than-normal temperatures during the summer months boosted this season's wheat harvest, it also hampered grain quality. *(For more information, please contact [Iliana.Mladenova@usda.gov](mailto:Iliana.Mladenova@usda.gov).)*

### Russia Wheat: Harvest Data Indicates Lower Production

Russia wheat production for marketing year 2024/25 is estimated at 81.5 million metric tons (mmt), down less than 1 percent from last month and 11 percent from last year. The estimate includes 57.5 mmt of winter wheat and 24.0 mmt of spring wheat. USDA crop production estimates for Russia exclude estimated output from Crimea, which is included for Ukraine. Total wheat yield is estimated at 2.91 tons per hectare (t/ha), down less than 1 percent from last month and 8 percent from last year. Total harvested area is estimated at 28.0 million hectares (mha), unchanged from last month and down 3 percent from last year.



Source: USDA PSD Online

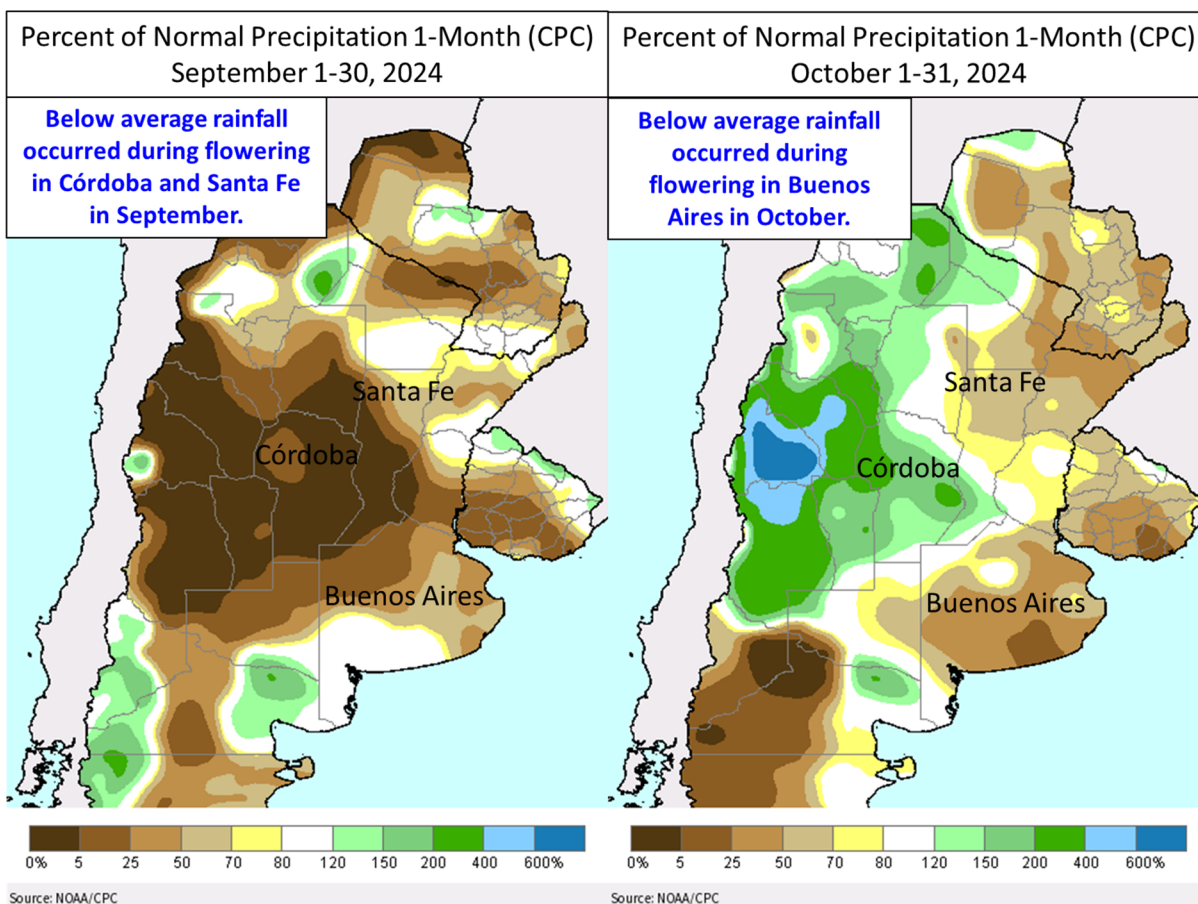
Russia grows both winter and spring wheat. The winter crop typically accounts for about 70 percent of total production, and it is planted primarily in the European part of Russia. The spring crop accounts for the remaining 30 percent of total production and it is mainly sown in the regions bordering Kazakhstan: the Volga, Urals, and Siberian Districts of Russia.

The month-to-month decrease in production is based on the official operational harvest data released by the Ministry of Agriculture (MinAg) of Russia. According to MinAg, harvest is about 98 percent complete as of October 29. To date, 83.6 mmt of wheat in bunker weight has been harvested from an area of 28.0 mha (including Crimea). Assuming normal net-to-bunker conversion of 96.5 percent (representing the 5-year average), the current net yield is about 2.88 t/ha, excluding Crimea.

Area, yield, and production estimates for Russia winter wheat and spring wheat are available on PSD Online. Select “Downloadable Data Sets” and open the zipped file for “Russia Wheat; Winter/Spring Area & Production” (For more information, please contact [Iliana.Mladenova@usda.gov](mailto:Iliana.Mladenova@usda.gov).)

## Argentina Wheat: Production Down Due to Dryness During Flowering

Argentina wheat production for marketing year 2024/25 is forecast at 17.5 million metric tons, down 3 percent from last month, but up 10 percent from last year. Wheat yield is forecast at 2.92 tons per hectare, down 3 percent from last month, but up 3 percent from last year. Harvested area is forecast at 6.0 million hectares, unchanged from last month, but up 8 percent from last year.



Wheat in Argentina is planted in May through July and harvested in November through January. The wheat crop typically flowers in September in the northern regions and October in the southern regions. During September, below-average rainfall occurred in Córdoba (which accounts for about 13 percent of production) and Santa Fe (18 percent) during the critical flowering period. During October, there was below-average rainfall in Buenos Aires (50 percent) during the crop's flowering stage. Some of the crop in the far south of Buenos Aires was not yet flowering and may have been spared the dryness. Temperatures throughout September and October were warmer than usual, which, combined with the dryness, negatively impacted yield. Harvest will begin in mid-November. (For more information, please contact [Katie.McGaughey@usda.gov](mailto:Katie.McGaughey@usda.gov).)

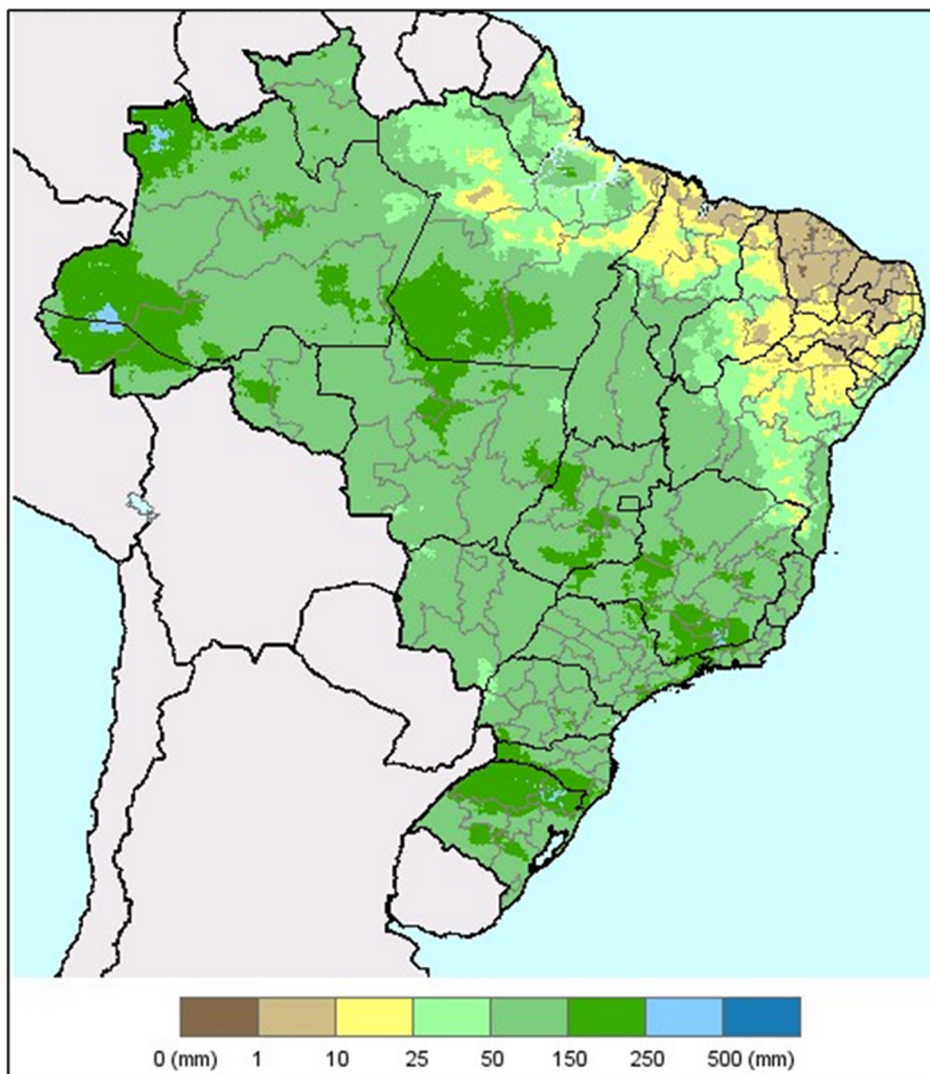


## Brazil Soybeans: Rainfall Arrives, Accelerating Planting

USDA forecasts Brazil soybean production for marketing year (MY) 2024/25 to remain at a record 169.0 million metric tons, unchanged from last month, but up 10 percent from last year and 18 percent above the 5-year average. Harvested area is forecasted at a record 47.3 million hectares, up 3 percent from last year and 13 percent above the 5-year average. Yield is forecast at 3.57 tons per hectare, up 7 percent from last year and 4 percent above the 5-year average.

### Brazil: 1-Mo. Precipitation (CHIRPS)

September 26 – October 25, 2024

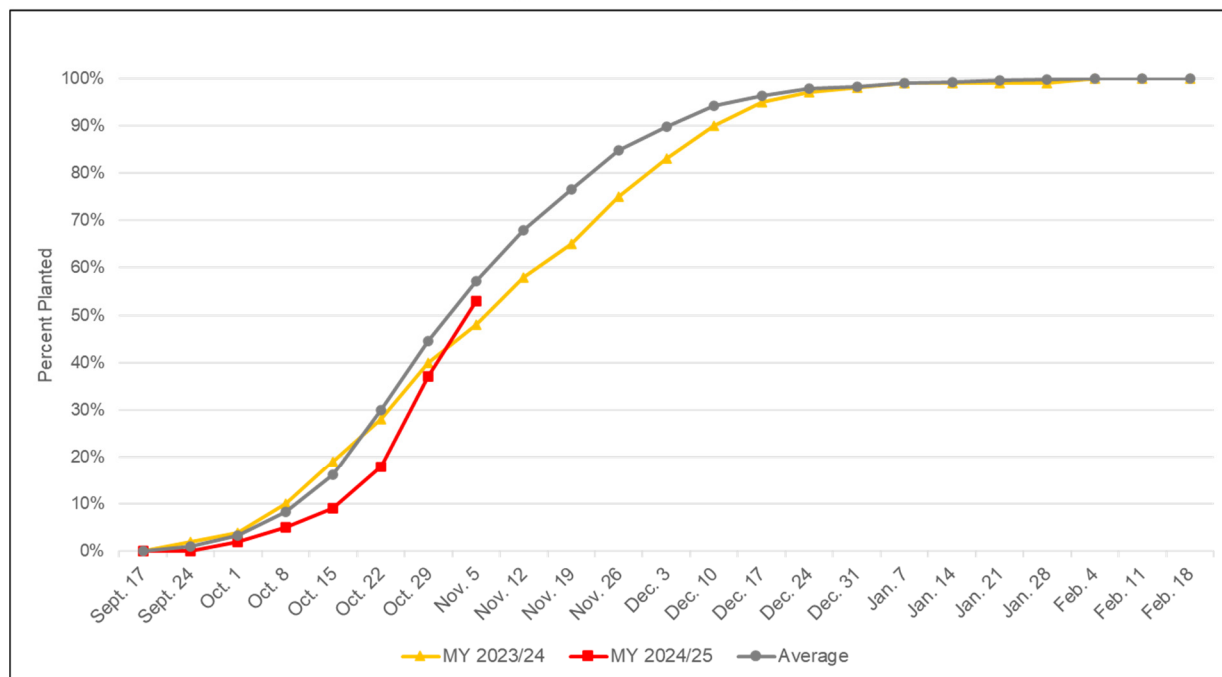


Source: UCSB Climate Hazards Center InfraRed Precipitation with Station data (CHIRPS)

The soybean planting moratorium ended in the early part of September; however, farmers were reluctant to plant until the onset of spring rains, which ensure adequate soil moisture for plant establishment. Dryness persisted through September, following hot and dry winter months, depleting soil moisture reserves significantly, particularly in the states of Mato Grosso, Mato

Grosso do Sul, and Paraná. Spring rainfall arrived with sufficient frequency in early October to assure farmers of the onset of the rainy season that annually supports soybean production.

### Brazil Soybean Planting Progress

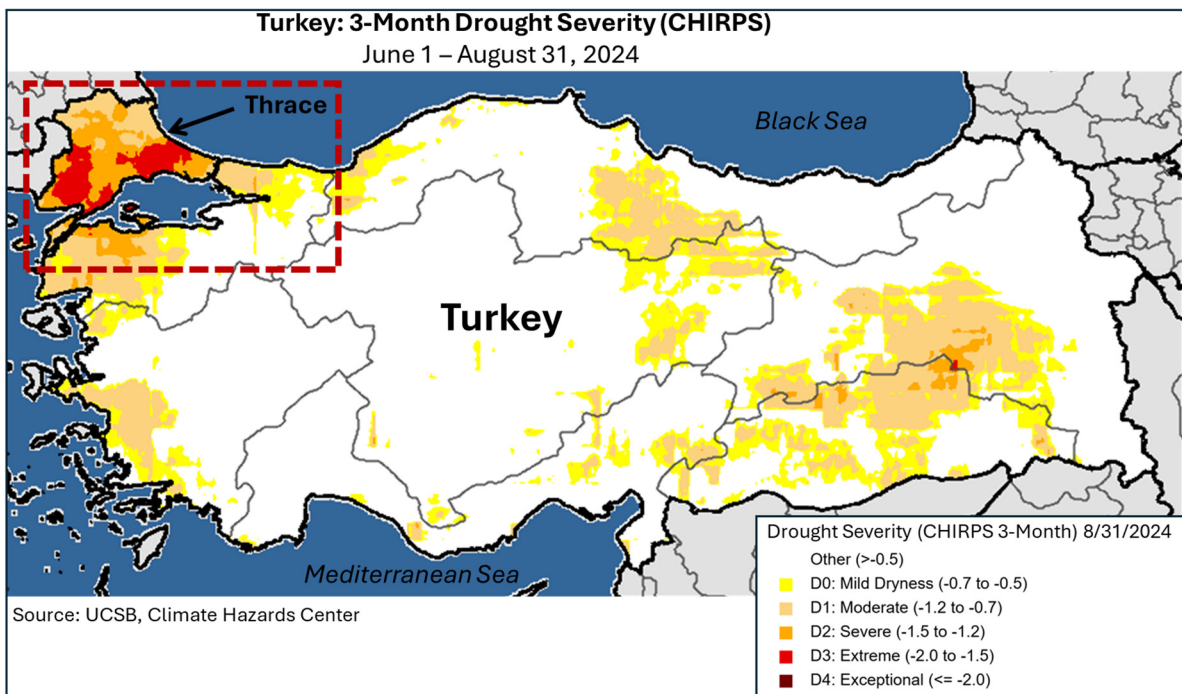
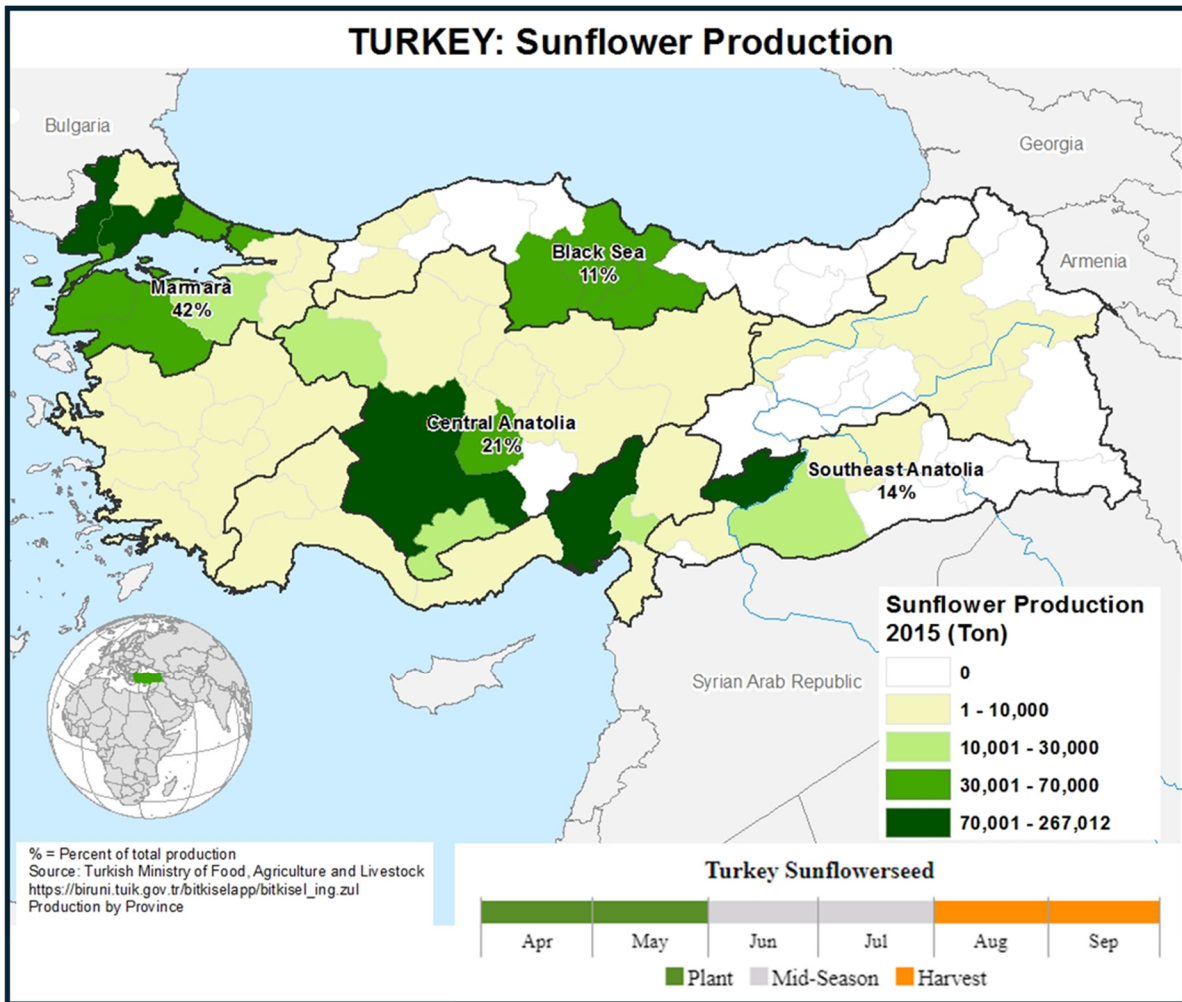


Source: Companhia Nacional de Abastecimento (CONAB)

Planting has rapidly accelerated following the substantial delays through September. With the arrival of the October rainfall, planting progress is ahead of last year at 53 percent complete, nationally, as of November 3, according to *Companhia Nacional de Abastecimento* (CONAB). At the state level, planting was 80 percent complete in Mato Grosso, according to *Instituto Mato-Grossense de Economia Agropecuária* (IMEA), and 74 percent complete in Paraná, according to the *Departamento de Economia Rural* (DERAL). (For more information, please contact [Aaron.Mulhollen@usda.gov](mailto:Aaron.Mulhollen@usda.gov).)

### Turkey Sunflowerseed: Dry Conditions Reduce Production

Sunflowerseed production in Turkey for marketing year (MY) 2024/25 is estimated at 1.4 million metric tons (mmt), down 0.2 mmt (11 percent) from last month and last year, and down 19 percent from the 5-year average. Harvested area is estimated at 0.7 million hectares, unchanged from last month, but down 1 percent from last year and 7 percent below the 5-year average. Yield is estimated at 1.99 tons per hectare (t/ha), compared to 2.25 t/ha for last month, 2.21 t/ha for last year, and 2.30 t/ha for the 5-year average.



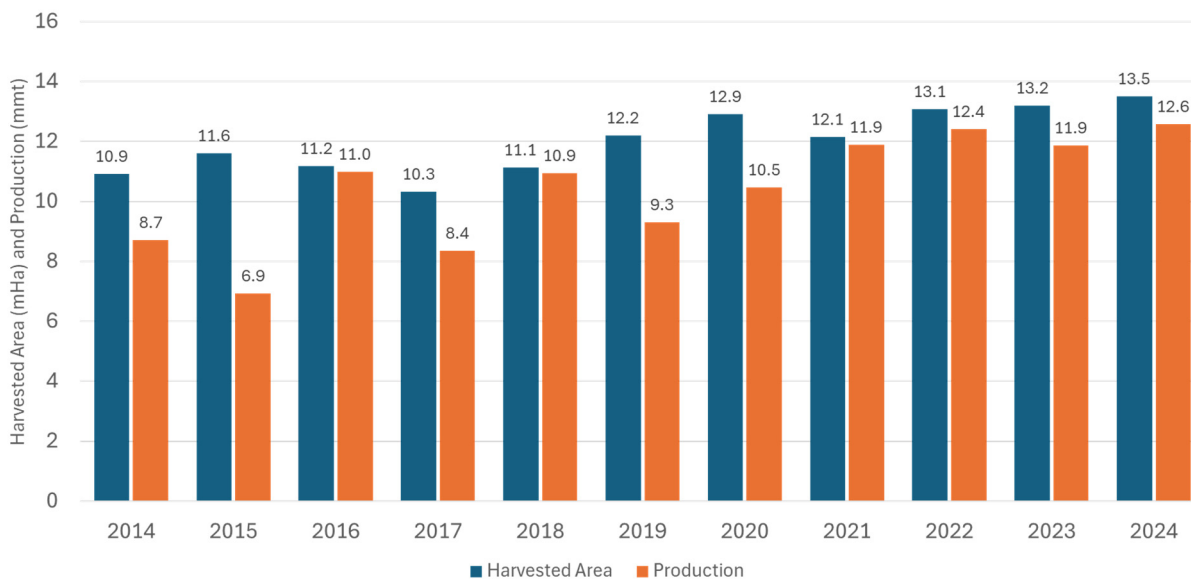
Sunflowerseed production is expected to drop to its lowest level since MY 2016/17. Drier- and hotter-than-normal weather during the summer in the sunflower-heavy northwestern areas of the country, including Thrace, diminished yields. Farmers from Thrace, which normally accounts for about half of the country’s sunflower production, are reporting yield losses of up to 50 percent compared to the long-term average. Meanwhile, the growing conditions in the other major sunflower growing areas – Central Anatolia and Cukurova region – in the center of the country, appear normal; and production levels in these locations are expected to be in line with historical averages ([See GAIN Report TU2024-0047](#)). (For more information, please contact [Bryan.Purcell@usda.gov](mailto:Bryan.Purcell@usda.gov).)

### India Soybeans: Despite Early Season Dryness, Production Remains a Record

USDA estimates India’s marketing year (MY) 2024/25 soybean production at 12.6 million metric tons, down 2 percent from last month, but up 6 percent from last year. Harvested area is estimated at a record 13.5 million hectares, unchanged from last month, but up 2 percent from MY 2023/24. Yield is estimated at 0.93 tons per hectare, down 2 percent from last month, but up 4 percent from the previous year.

Production remains a record, despite unfavorable rainfall deficits during the planting and vegetative stages. Above-normal rainfall in August boosted crops during flowering and pod development. The late withdrawal of the southwest monsoon was beneficial, particularly for pod development.

### India Soybeans at Record Area and Production



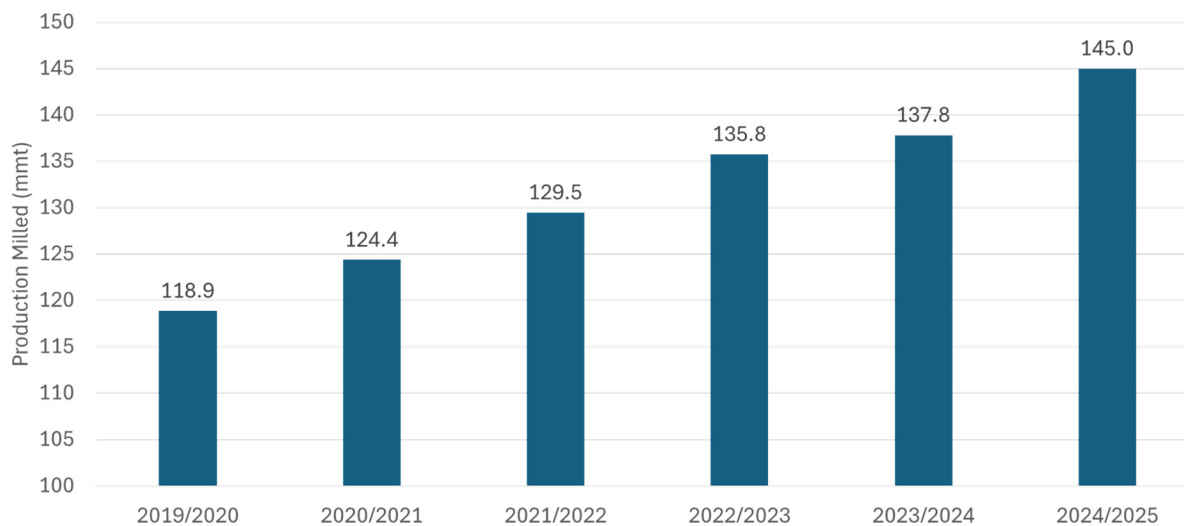
Source: USDA PSD Online

Soybean planting usually starts in June with the beginning of the southwest monsoon and ends in July. Harvest begins in September and lasts until November. (For more information, please contact [Arnella.Trent@usda.gov](mailto:Arnella.Trent@usda.gov).)

## India Rice: Record Yields Lead to Record Production

USDA estimates marketing year (MY) 2024/25 rice production for India at a record 145.0 million metric tons (milled basis), up 2 percent from last month and 5 percent from last year. Harvested area is estimated at a record 50.0 million hectares, up 2 percent from last month, 5 percent from last year, and 8 percent from the 5-year average. The yield (rough basis) is estimated at a record 4.35 tons per hectare, up less than 1 percent from last year and 4 percent from the 5-year average.

### India: Record Rice Production



Source: USDA PSD Online

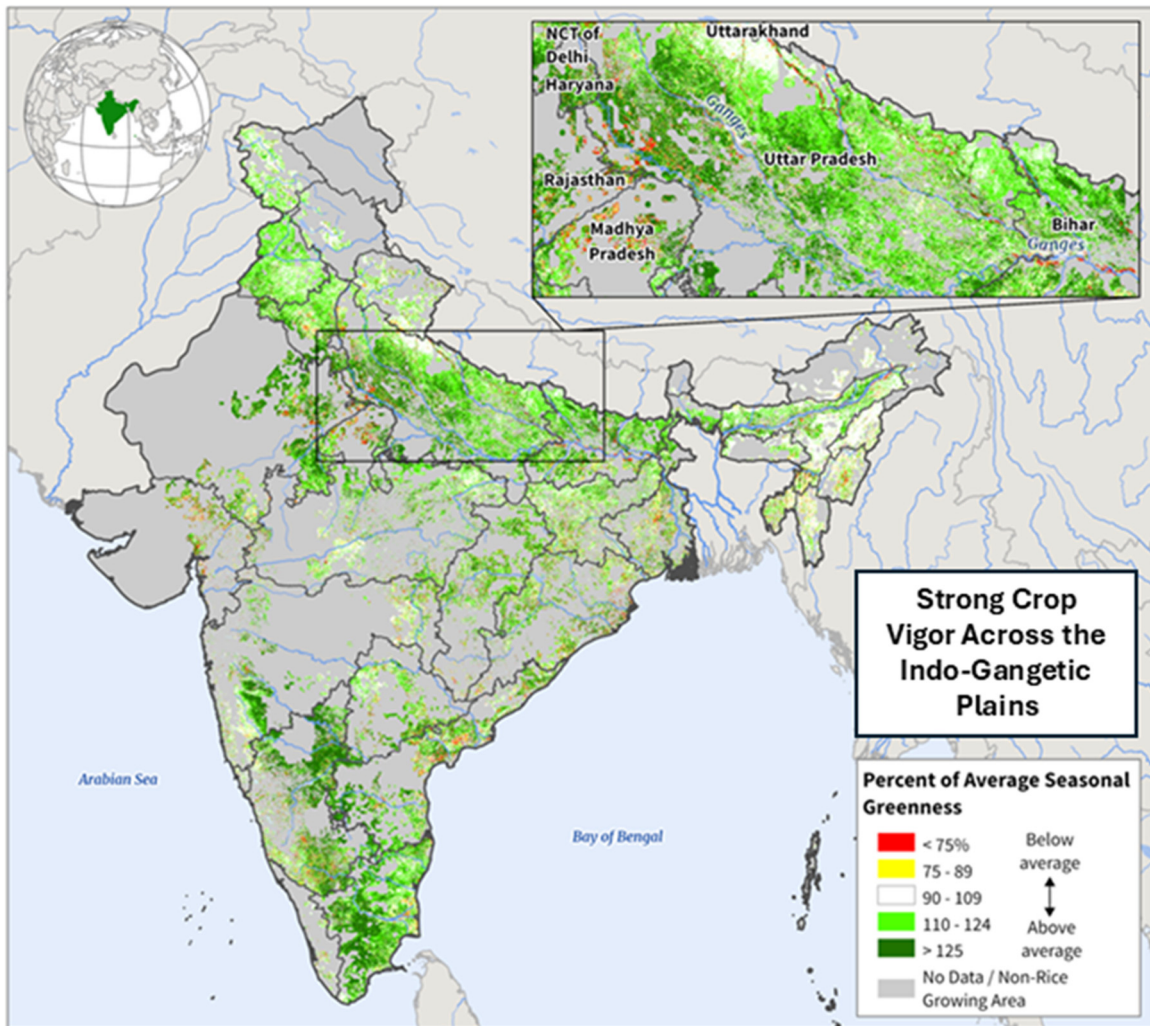
The record production is due to the increase in planted area and ideal growing conditions in the *kharif* season. Farmers were drawn to shift from cotton to rice due to its potential for higher yields and less risk than cotton.

Satellite-derived Percent of Average Seasonal Greenness (PASG), calculated from the Normalized Difference Vegetation Index (NDVI) during August and September, showed good crop vigor across the Indo-Gangetic Plains, consisting of Uttar Pradesh, Bihar, Jharkhand, West Bengal, and Odisha, which comprises about 30 percent of the *kharif* crop. Most farmers planted after the July planting window. The late-planted rice benefited from the rains during the late withdrawal of the southwest monsoon and increased precipitation during August and September.



## India: Percent of Average Seasonal Greenness (PASG)

July 27 to September 28, 2024 (2-Month)



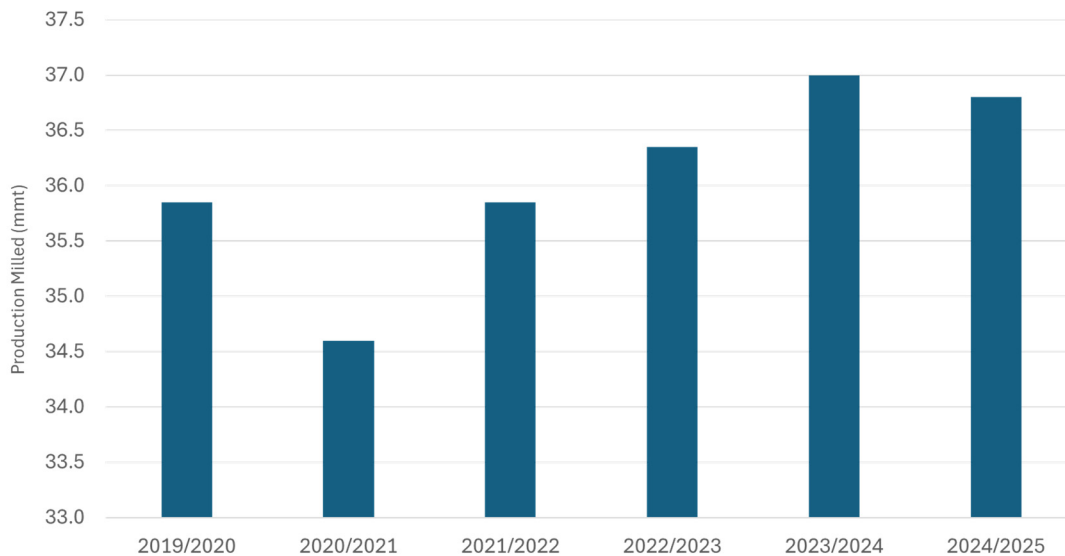
Sources: MODIS Percent of Average Seasonal Greenness 2-Month (Jul 27 to Sep 28, 2024); IFPRI Spatial Production Allocation Model (SPAM) Rice Non-Cropland Mask (2020)

India produces rice mainly in the *kharif* and *rabi* seasons. After the *rabi* crop, an even smaller third summer crop is then planted. There are 3 seasons for rice: *kharif* which accounts for 83 percent, *rabi* (10 percent) and a summer crop (7 percent), according to the Government of India. *Kharif* rice will be harvested by early November. *Rabi* rice will be planted from November to January and harvested in late April. (For more information, please contact [Arnella.Trent@usda.gov](mailto:Arnella.Trent@usda.gov).)

### Bangladesh Rice: Area Decline Leads to Lower Production

USDA estimates marketing year 2024/25 Bangladesh rice production at 36.8 million metric tons (milled basis), down slightly from last year. Harvested area is estimated at 11.5 million hectares, down 2 percent from last month and last year. The 2 percent decrease in harvested area is due to problems in both the *aus* and *aman* season. Yield is estimated at a record 4.80 tons per hectare, up 2 percent from the previous year.

## Bangladesh Rice: Decrease in Area Leads to Decrease in Production



Source: USDA PSD Online

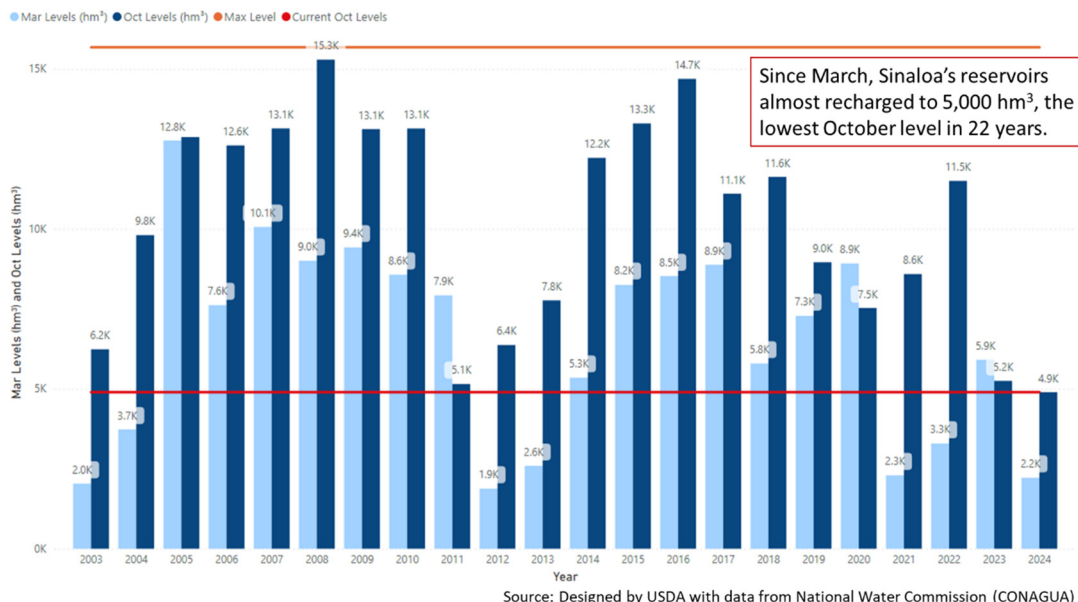
Rice is grown throughout the year. The growing season is divided into the *boro*, which is the largest crop, followed by *aus* and *aman* crop. Rice in the *boro* season is grown from December to April and there were no reports of drought nor pest outbreaks. During the *aus* season there were higher incidences of pests and diseases. The *aman* season had heavy rains and flooding from the Indian highlands, which damaged rice in the eastern and southern districts. (For more information, please contact [Arnella.Trent@usda.gov](mailto:Arnella.Trent@usda.gov).)

## Mexico Corn: Production Cut on Lower Expected Area

USDA estimates Mexico corn production for marketing year (MY) 2024/25 at 24.5 million metric tons (mmt), down 500,000 metric tons or 2 percent from last month, but up 4 percent from the drought last year, yet 7 percent below the 5-year average. Harvested area is estimated at 6.3 million hectares (ha), down 2 percent from last month, but up 3 percent from last year, and down 7 percent from the 5-year average. Yield is estimated at 3.89 tons per hectare, down less than 1 percent from last month and the 5-year average, but up 1 percent from last year. October reservoir levels are jeopardizing winter corn crop prospects resulting in lower estimates.

Mexico corn has two seasons, a spring/summer season, followed by a fall/winter season. The rainy season typically starts in May, but this year it started in late June. The spring/summer corn crop (70 percent of annual production) quickly rebounded from last year's drought. Rainfall in July through September, the most critical time for corn development, was higher-than average and increased soil moisture. Harvest for this crop season is underway. The spring/summer corn crop is grown throughout Mexico and still faced some challenges resulting in planted area being lower than the 10-year average. Overall, farmers are challenged by limited irrigation water, higher input prices for seeds, electricity, and fuel, as well as less available credit. Despite improved weather conditions from last year, the prolonged drought and macroeconomic conditions still challenged farmers this season.

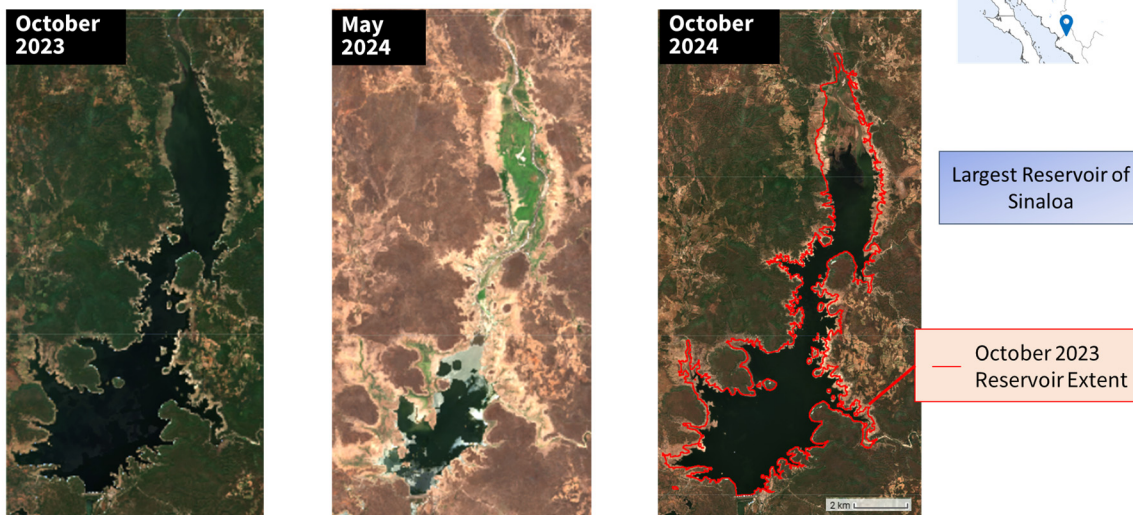
## Sinaloa Reservoir Levels in March and October by Year



The remaining 30 percent of annual corn production is grown in the fall/winter season. This crop is planted from November through February and is mostly dependent on irrigation as its main water source. Almost 70 percent of the winter season crop is produced in Sinaloa. The reservoirs in Sinaloa, at less than 5,000 cubic hectometers (hm<sup>3</sup>), are the lowest they have been for October in the last 22 years, as shown in the above graphic. The largest reservoir is Miguel Hidalgo y Costilla and satellite imagery confirms how it has not recharged as well this year. This year, the National Water Commission (CONAGUA) showed Sinaloa's reservoirs started at 5,000 hm<sup>3</sup> on Oct 1<sup>st</sup> and continued to drop to 4,440 hm<sup>3</sup> by October 31, 2024. In contrast, in MY 2023/24, tropical Storm Norma provided ample rainfall that recharged the reservoirs to 5,250 hm<sup>3</sup> by October 31, 2023, according to CONAGUA. That tropical storm provided water for winter corn in Sinaloa, albeit at levels almost 50 percent below the 5-year average.

### Sinaloa, Mexico: Miguel Hidalgo y Costilla Reservoir

Oct 1 to 15 and May 15 to 30



Source: Copernicus Sentinel-2 (true color) imagery 2023, 2024

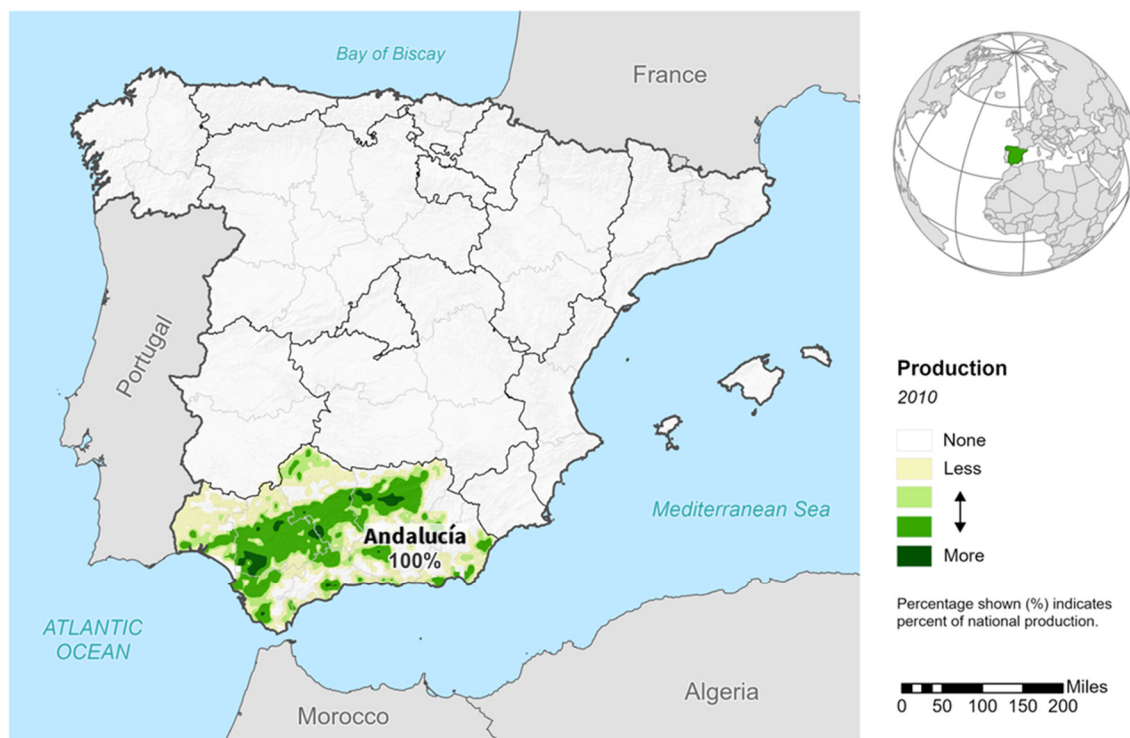


According to Mexico’s Agri-Food and Fisheries Information Service (SIAP), fall/winter corn production for Sinaloa has ranged from slightly more than 3.2 mmt in MY 2023/24 to 6.5 mmt in MY 2022/23 for the past six years. For the fall/winter crop, planting begins in November and harvest is from mid-April through July. *(For more information, please contact [Lisa.Colson@usda.gov](mailto:Lisa.Colson@usda.gov).)*

### Spain Cotton: Production Reduced on Pest Reports; Flooding Impacts on Crop Uncertain

Cotton production in Spain for marketing year (MY) 2024/25 is estimated at 195,000 480-pound bales. This amount is down 10,000 bales or 5 percent less than last month, but up 120,000 bales from last year’s drought-stricken crop. Harvested area is estimated at 48,000 hectares, down 4 percent from last month and 8 percent from last year. Harvested area is estimated to be 17 percent below the 5-year average. Yield is estimated at 885 kilograms per hectare, down less than 1 percent from last month, but 182 percent above last year’s disastrous crop. It is 7 percent above the 5-year average.

### Spain: Cotton

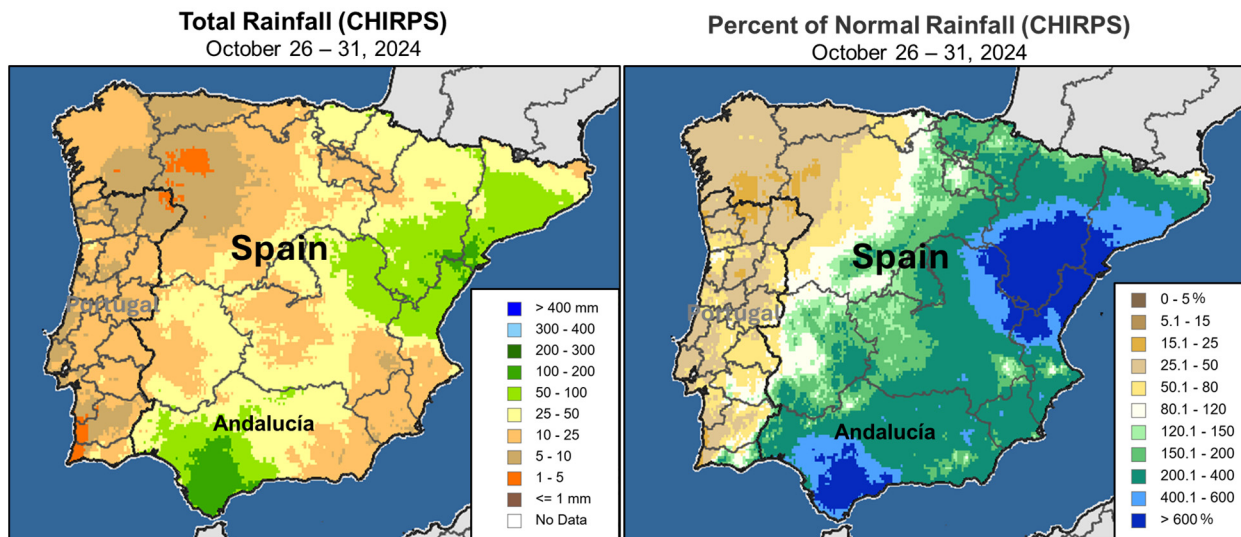


USDA Foreign Agricultural Service  
U.S. DEPARTMENT OF AGRICULTURE

Source: Institute of Food Policy Research, SPAM 2010



Averaging about 20 percent of the European Union’s (EU) cotton production, Spain is the EU’s second largest cotton growing member state after Greece. Spain’s production, which is essentially all irrigated, is concentrated in the Guadalquivir River Valley of Andalusía. Andalusía is Spain’s southernmost region. Most of the production is in the Andalusian provinces of Seville and Cádiz, and to a lesser extent, Córdoba.



Source: UCSB, Climate Hazards Center

A three-year drought, which dropped reservoir levels, prompted the government to restrict irrigation amounts, and dissuaded farmers from planting their normal area. The drought has also caused yield drops in the last few years. While rain returned in the spring of 2024, it was too late for plantings to return to normal levels for the MY 2024/25 crop. More recently, reports of pest infestations have indicated yield losses for the crop. Finally, severe flooding during the last week of October from a cutoff upper-level low pressure system caused historic and devastating impacts in Spain, including Valencia and in parts of the cotton area of Andalucía. At this point, with harvest well underway, the effect on yield has not been determined, but some quality losses are likely. (For more information, please contact [Bryan.Purcell@usda.gov](mailto:Bryan.Purcell@usda.gov).)





**World Agricultural Production  
U.S. Department of Agriculture**

Foreign Agricultural Service / Global Market Analysis  
International Production Assessment Division (IPAD)  
Ag Box 1051, Room 4630, South Building  
Washington, DC 20250-1051

<https://ipad.fas.usda.gov/>

Telephone: (202) 720-1662 Fax: (202) 720-1158

This report uses information from the Foreign Agricultural Service’s (FAS) global network of agricultural attachés and counselors, official statistics of foreign governments and other foreign source materials, and the analysis of economic data and satellite imagery. Estimates of foreign area, yield, and production are from the International Production Assessment Division, FAS, and are reviewed by USDA’s Inter-Agency Commodity Estimates Committee. Estimates of U.S. area, yield, and production are from USDA’s National Agricultural Statistics Service. Numbers within the report may not add to totals because of rounding. This report reflects official USDA estimates released in the World Agricultural Supply and Demand Estimates (WASDE-584), November 8, 2024.

**Printed copies are available from the National Technical Information Service. Download an order form at [http://www.ntis.gov/products/specialty/usda/fas\\_a-g.asp](http://www.ntis.gov/products/specialty/usda/fas_a-g.asp), or call NTIS at 1-800-363-2068.**

The FAS International Production Assessment Division prepared this report. The next issue of World Agricultural Production will be released after 12:00 p.m. Eastern Time, December 10, 2024.

**Conversion Table**

Metric tons to bushels

Wheat, soybeans	=	MT * 36.7437
Corn, sorghum, rye	=	MT * 39.36825
Barley	=	MT * 45.929625
Oats	=	MT * 68.894438

Metric tons to 480-lb bales

Cotton	=	MT * 4.592917
--------	---	---------------

Metric tons to hundredweight

Rice	=	MT * 22.04622
------	---	---------------

Area & weight

1 hectare	=	2.471044 acres
1 kilogram	=	2.204622 pounds



For further information, contact:  
**U.S. Department of Agriculture**  
**Foreign Agricultural Service**  
**Global Market Analysis**

International Production Assessment Division  
 Ag Box 1051, Room 4630, South Building  
 Washington, DC 20250-1051

Telephone: (202) 720-1662

Fax: (202) 720-1158

**GENERAL INFORMATION**

Senior Director	Ronald Frantz	202-720-4056	ronald.frantz@usda.gov
Director	Robert Tetrault	202-720-1071	robert.tetrault@usda.gov
USDA Remote Sensing Advisor	Vacant		
Sr. Analyst/Technical Lead	Curt Reynolds, Ph.D.	202-690-0134	curt.reynolds@usda.gov
Sr. Analyst/ Satellite Imagery	Dath Mita, Ph.D.	202-720-7339	dath.mita@usda.gov
Archives Manager/Technical Lead			
Sr. Analyst/Technical Lead	Vacant		
GIS Mapping/Imagery Analyst	Lisa Colson	202-720-6652	lisa.colson@usda.gov
WAP Coordinators	Shannon Moyo	771-221-5973	shannon.moyo@usda.gov
	Vacant		

**ANALYSIS REGIONS**

**ANALYST**

**CONTACT INFORMATION**

Brazil	Aaron Mulhollen	202-690-0131	aaron.mulhollen@usda.gov
South America (except Brazil), and Central Asia	Katie McGaughey	202-720-9210	katie.mcgaughey@usda.gov
Europe, North Africa, and Middle East	Bryan Purcell	202-690-0138	bryan.purcell@usda.gov
India, Pakistan, and South Asia	Arnella Trent	202-720-0881	arnella.trent@usda.gov
China and East Asia	Dath Mita, Ph.D.	202-720-7339	dath.mita@usda.gov
South Africa and Sub-Saharan Africa	Curt Reynolds, Ph.D.	202-690-0134	curt.reynolds@usda.gov
Indonesia and Southeast Asia	Justin Jenkins	202-720-0419	justin.jenkins@usda.gov
Mexico and Central America	Lisa Colson	202-720-6652	lisa.colson@usda.gov
Canada, Caribbean, and Australia	Shannon Moyo	771-221-5973	shannon.moyo@usda.gov
Russia, Ukraine, Kazakhstan, Moldova, and Belarus	Iliana Mladenova, Ph.D.	202-690-2315	iliana.mladenova@usda.gov



The Foreign Agricultural Service (FAS) updates its production, supply and distribution (PSD) database for cotton, oilseeds, and grains at 12:00 p.m. on the day the *World Agricultural Supply and Demand Estimates* (WASDE) report is released. This circular is released by 12:15 p.m.

## FAS Reports and Databases:

### World Agricultural Production

Current: <https://www.fas.usda.gov/data/world-agricultural-production>

Archive: <https://usda.library.cornell.edu/concern/publications/5q47rn72z?locale=en>

USDA's Foreign Agricultural Service (FAS) publishes a monthly report on crop acreage, yield and production in major countries worldwide. Sources include reporting from FAS's worldwide offices, official statistics of foreign governments, and analysis of economic data and satellite imagery. The reports reflect official USDA estimates released in the monthly *World Agricultural Supply and Demand Estimates* (WASDE).

### World Markets and Trade

Current: <https://www.fas.usda.gov/data>

Archive:

[https://usda.library.cornell.edu/catalog?f%5Bmember\\_of\\_collections\\_ssim%5D%5B%5D=Foreign+Agricultural+Service&locale=en](https://usda.library.cornell.edu/catalog?f%5Bmember_of_collections_ssim%5D%5B%5D=Foreign+Agricultural+Service&locale=en)

USDA's Foreign Agricultural Service (FAS) publishes monthly and quarterly reports which include data on U.S. and global trade, production, consumption and stocks, as well as analysis of developments affecting world trade in oilseeds, grains, cotton, livestock and poultry. The reports reflect official USDA estimates released in the monthly *World Agricultural Supply and Demand Estimates* (WASDE).

### Global Agricultural Information Network (GAIN)

<https://gain.fas.usda.gov/>

USDA's Foreign Agricultural Service (FAS) provides timely reports on foreign markets through the Global Agriculture Information Network (GAIN) database. An average of 2,000 reports are added each year, with reports going back to 1995. GAIN reports are compiled by FAS' global market intelligence network, which includes FAS foreign service officers and locally engaged staff in over 90 overseas offices world-wide. They provide on-the-ground intelligence, insight, and analysis on nearly 200 countries, delivering information on foreign agricultural markets, crop conditions, and agro-political dynamics of interest to U.S. agriculture. GAIN reports contain assessments of commodity and trade issues made by USDA staff and are not necessarily statements of official U.S. government policy.

### Production, Supply and Distribution (PS&D) Online

<https://apps.fas.usda.gov/psdonline/app/index.html#/app/home>

PSD Online is the public repository for USDA's Official Production, Supply and Distribution forecast data and reports for key agricultural commodities. PSD Online data are reviewed and updated monthly by an interagency committee chaired by USDA's World Agricultural Outlook Board (WAOB). The committee consist of representatives from Foreign Agricultural Service (FAS), the Economic Research Service (ERS), the Farm Service Agency (FSA), and the Agricultural Marketing Service (AMS).

### EU Countries and Russia Wheat: Area and Production Estimates

<https://apps.fas.usda.gov/psdonline/app/index.html#/app/downloads> (click on PSD Datasets)

USDA's Foreign Agricultural Service (FAS) provides country-level area and production estimates for the nations of the European Union. For Russia, country-level area and production estimates are provided for Winter and Spring wheat. These datasets are reviewed and updated monthly by an interagency committee chaired by USDA's World Agricultural Outlook Board (WAOB) and can be downloaded through PSD datasets on PSD Online.



## FAS Reports and Databases:

### **International Production Assessment (IPAD)**

<https://ipad.fas.usda.gov/>

USDA's Foreign Agricultural Service (FAS) maintains a dynamic global crop production portal with key information including *World Agricultural Production* (WAP) briefs, Commodity Intelligence Reports (CIR), geospatial applications, crop production maps at a subnational level and crop calendars for the top-20 producing countries. Additionally, Crop Explorer (<https://ipad.fas.usda.gov/cropexplorer/>) displays rainfall, temperature, evapotranspiration, soil moisture, snow cover, and vegetation conditions in charts and maps.

### **USDA and NASA Global Agricultural Monitoring (GLAM)**

<https://glam1.gsfc.nasa.gov/>

The USDA and NASA Global Agricultural Monitoring (GLAM) system provides near real-time and science quality Moderate Resolution Imaging Spectroradiometer (MODIS) Normalized Difference Vegetation Index (NDVI) from the satellites Terra and Aqua. The public can view and retrieve MODIS 8-day composited, global NDVI satellite imagery and time series data. GLAM was developed by NASA's Global Inventory Modeling and Mapping Studies (GIMMS) group for USDA's Foreign Agricultural Service.

### **Global Agricultural and Disaster Assessment System (GADAS)**

<https://geo.fas.usda.gov/GADAS/index.html>

USDA's Foreign Agricultural Service (FAS) provides the Global Agricultural and Disaster Assessment System (GADAS), a web-based Geographic Information System (GIS) tool which integrates a vast array of highly detailed earth observation data streams, particularly targeted towards agricultural and disaster assessment analysis. GADAS is an interactive website which provides analysts with a wide variety of routine geospatial products (maps, charts, tables) they require for comprehensive situational investigations and recurring assessments.

### **Export Sales Reporting**

<https://apps.fas.usda.gov/esrquery/>

USDA's Export Sales Reporting Program monitors U.S. agricultural export sales on a daily and weekly basis. Export sales reporting provides a constant stream of up-to-date market information for 40 U.S. agricultural commodities sold abroad. The weekly U.S. Export Sales report is the most currently available source of U.S. exports sales data. The data is used to analyze overall levels of export demand, determine where markets exit, and assess the relative position of U.S. commodities in foreign markets.

### **Global Agricultural Trade System (GATS)**

<https://apps.fas.usda.gov/gats/default.aspx>

The Global Agricultural Trade System (GATS) is a searchable database containing monthly U.S. Census Bureau trade data organized by agricultural commodity and agricultural related product groups. Trade data is searchable by partner countries and partner groups. Historical U.S. agricultural trade data is available back to 1967. In addition, U.N. trade statistics (UN Comtrade) may be queried through GATS. UN trade data is available for nearly 200 countries or areas, dating from the inception of the Harmonized System (HS) of trade codes in 1989 to present. The database is continuously updated. U.S. trade data is updated monthly according to the U.S. Census Bureau's reporting system. UN Comtrade data are updated in GATS after nationally submitted data to the UN are standardized by the UN Statistical Division and added to the UN Comtrade database.

## **Other USDA Reports:**

World Agricultural Supply and Demand Estimates (WASDE):

<http://www.usda.gov/oce/commodity/wasde/>

Economic Research Service:

<http://www.ers.usda.gov/topics/crops>

National Agricultural Statistics Service:

<http://www.nass.usda.gov/Publications/>

**Table 01 World Crop Production Summary**

Million Metric Tons

Commodity	World	Total Foreign	North America			Former Soviet		European	Asia (WAP)					South America		Selected Other			All Others
			United States	Canada	Mexico	Russia	Ukraine		China	India	Indonesia	Pakistan	Thailand	Argentina	Brazil	Australia	South Africa	Turkey	
			-	-	-	-	-		-	-	-	-	-	-	-	-	-	-	
---Million metric tons---																			
<b>Wheat</b>																			
2022/23	789.6	744.7	44.9	34.8	3.6	92.0	21.5	nr	137.7	104.0	0.0	26.2	0.0	12.6	10.6	40.5	2.1	17.3	241.8
2023/24 prel.	790.4	741.3	49.1	32.9	3.5	91.5	23.0	nr	136.6	110.6	0.0	28.2	0.0	15.9	8.1	26.0	2.1	21.0	242.1
2024/25 proj.																			
Oct	794.1	740.4	53.7	35.0	2.6	82.0	22.9	nr	140.0	113.3	0.0	31.4	0.0	18.0	9.0	32.0	2.0	19.0	233.2
Nov	794.7	741.1	53.7	35.0	2.6	81.5	22.9	nr	140.0	113.3	0.0	31.4	0.0	17.5	8.5	32.0	2.0	19.0	235.4
<b>Coarse Grains</b>																			
2022/23	1,454.8	1,098.4	356.4	30.5	33.9	44.1	33.9	nr	285.7	56.8	12.4	11.3	5.3	43.9	143.5	18.8	17.5	14.8	345.9
2023/24 prel.	1,504.6	1,101.8	402.9	27.5	28.8	42.5	39.8	nr	297.1	57.2	12.7	10.2	5.4	58.4	128.1	14.4	13.9	17.0	348.7
2024/25 proj.																			
Oct	1,500.1	1,101.7	398.4	26.3	30.4	35.5	32.4	nr	300.3	57.6	13.2	9.8	5.5	60.3	133.5	16.3	17.6	15.1	348.0
Nov	1,499.7	1,102.4	397.3	26.3	29.9	34.5	32.4	nr	300.3	57.6	13.2	9.8	5.5	60.3	133.5	16.3	17.6	14.7	350.6
<b>Rice, Milled</b>																			
2022/23	516.7	511.6	5.1	0.0	0.1	0.6	0.0	nr	145.9	135.8	33.9	7.3	20.9	0.8	6.8	0.4	0.0	0.6	158.5
2023/24 prel.	522.2	515.3	6.9	0.0	0.2	0.7	0.0	nr	144.6	137.8	33.0	9.9	20.0	0.8	7.2	0.4	0.0	0.5	160.1
2024/25 proj.																			
Oct	530.4	523.5	7.0	0.0	0.2	0.8	0.0	nr	146.0	142.0	34.0	10.0	20.1	0.9	7.5	0.4	0.0	0.5	161.1
Nov	533.8	526.8	7.0	0.0	0.2	0.8	0.0	nr	146.0	145.0	34.0	10.0	20.1	0.9	7.5	0.4	0.0	0.6	161.4
<b>Total Grains</b>																			
2022/23	2,761.1	2,354.6	406.4	65.3	37.6	136.7	55.4	nr	569.4	296.5	46.3	44.9	26.2	57.2	160.9	59.8	19.6	32.7	746.1
2023/24 prel.	2,817.2	2,358.3	458.9	60.5	32.4	134.7	62.8	nr	578.4	305.5	45.7	48.3	25.4	75.0	143.4	40.9	16.0	38.6	750.9
2024/25 proj.																			
Oct	2,824.6	2,365.6	459.0	61.3	33.1	118.3	55.3	nr	586.3	312.9	47.2	51.2	25.6	79.2	150.0	48.6	19.6	34.6	742.3
Nov	2,828.2	2,370.3	457.9	61.3	32.6	116.8	55.3	nr	586.3	315.9	47.2	51.2	25.6	78.7	149.5	48.6	19.6	34.2	747.4
<b>Oilseeds</b>																			
2022/23	637.8	512.0	125.8	25.5	0.9	26.6	19.8	nr	67.9	42.3	14.7	2.7	1.0	31.5	166.9	9.8	3.8	4.0	94.7
2023/24 prel.	657.8	535.7	122.2	26.3	0.6	28.1	25.5	nr	69.1	41.4	14.4	3.8	1.1	54.2	158.8	7.3	2.8	3.1	99.2
2024/25 proj.																			
Oct	687.3	552.9	134.4	27.2	0.6	28.4	22.7	nr	68.3	43.3	15.0	3.1	1.1	57.0	175.7	6.8	3.9	3.4	96.3
Nov	682.2	551.1	131.1	27.2	0.6	28.3	22.7	nr	68.3	43.1	15.0	3.1	1.1	57.0	175.7	6.8	3.9	3.2	95.0
<b>Cotton</b>																			
2022/23	116.2	101.7	14.5	0.0	1.6	0.0	0.0	1.6	30.8	26.3	0.0	3.9	0.0	1.2	11.7	5.8	0.1	4.9	13.9
2023/24 prel.	113.0	101.0	12.1	0.0	0.9	0.0	0.0	1.0	27.4	25.4	0.0	7.0	0.0	1.7	14.6	5.0	0.1	3.2	14.8
2024/25 proj.																			
Oct	116.6	102.4	14.2	0.0	0.8	0.0	0.0	1.3	28.2	24.0	0.0	5.7	0.0	1.6	16.8	5.0	0.1	4.0	14.9
Nov	116.2	102.0	14.2	0.0	0.8	0.0	0.0	1.3	28.2	24.0	0.0	5.5	0.0	1.6	16.8	5.0	0.1	4.0	14.7

1/ Includes wheat, coarse grains, and rice (milled) shown above.



**Table 02 Wheat Area, Yield, and Production**

Country / Region	Area (Million hectares)				Yield (Metric tons per hectare)				Production (Million metric tons)				Change in Production			
	2022/23	Prel.	2024/25 Proj.		2022/23	Prel.	2024/25 Proj.		2022/23	Prel.	2024/25 Proj.		From last month		From last year	
		2023/24	Oct	Nov		2023/24	Oct	Nov		2023/24	Oct	Nov	MMT	Percent	MMT	Percent
<b>World</b>	219.60	222.72	222.27	222.22	3.60	3.55	3.57	3.58	789.56	790.42	794.08	794.73	0.65	0.08	4.31	0.55
<b>United States</b>	14.36	15.01	15.57	15.57	3.13	3.27	3.45	3.45	44.90	49.10	53.65	53.65	0.00	0.00	4.56	9.28
<b>Total Foreign</b>	205.24	207.71	206.70	206.65	3.63	3.57	3.58	3.59	744.66	741.32	740.43	741.08	0.65	0.09	-0.25	-0.03
<b>European Union</b>	24.40	24.32	22.90	22.90	5.50	5.55	5.37	5.35	134.29	134.94	123.00	122.60	-0.40	-0.33	-12.34	-9.15
<b>United Kingdom</b>	1.81	1.72	1.40	1.40	8.57	8.13	7.75	7.89	15.54	13.98	10.85	11.05	0.20	1.84	-2.93	-20.96
<b>Serbia</b>	0.62	0.73	0.63	0.63	5.32	4.69	4.80	4.80	3.30	3.40	3.00	3.00	0.00	0.00	-0.40	-11.76
<b>China</b>	23.52	23.63	23.70	23.70	5.86	5.78	5.91	5.91	137.72	136.59	140.00	140.00	0.00	0.00	3.41	2.50
<b>South Asia</b>																
India	30.46	31.40	31.83	31.83	3.41	3.52	3.56	3.56	104.00	110.55	113.29	113.29	0.00	0.00	2.74	2.48
Pakistan	8.98	9.03	9.63	9.63	2.92	3.12	3.26	3.26	26.21	28.16	31.40	31.40	0.00	0.00	3.24	11.50
Afghanistan	1.86	2.35	2.30	2.30	2.05	2.20	2.26	2.26	3.80	5.17	5.20	5.20	0.00	0.00	0.03	0.58
Nepal	0.72	0.72	0.72	0.72	2.98	2.90	2.90	2.92	2.15	2.09	2.09	2.10	0.01	0.48	0.01	0.48
<b>Former Soviet Union - 12</b>																
Russia	29.00	28.83	28.00	28.00	3.17	3.17	2.93	2.91	92.00	91.50	82.00	81.50	-0.50	-0.61	-10.00	-10.93
Russia Winter	16.30	15.27	15.80	15.80	4.17	4.19	3.64	3.64	68.00	64.00	57.50	57.50	0.00	0.00	-6.50	-10.16
Russia Spring	12.70	13.56	12.20	12.20	1.89	2.03	2.01	1.97	24.00	27.50	24.50	24.00	-0.50	-2.04	-3.50	-12.73
Ukraine	5.60	5.01	5.20	5.20	3.84	4.59	4.40	4.40	21.50	23.00	22.90	22.90	0.00	0.00	-0.10	-0.43
Kazakhstan	12.81	13.13	13.00	13.00	1.28	0.92	1.23	1.38	16.40	12.11	16.00	18.00	2.00	12.50	5.89	48.63
Uzbekistan	1.26	1.40	1.30	1.30	4.99	4.62	5.15	5.15	6.27	6.46	6.70	6.70	0.00	0.00	0.24	3.68
Belarus	0.68	0.68	0.69	0.69	3.48	3.38	3.80	3.80	2.35	2.30	2.60	2.60	0.00	0.00	0.30	13.04
<b>Canada</b>	10.10	10.70	10.60	10.60	3.45	3.08	3.30	3.30	34.81	32.95	35.00	35.00	0.00	0.00	2.05	6.23
<b>South America</b>																
Argentina	5.50	5.58	6.00	6.00	2.28	2.84	3.00	2.92	12.55	15.85	18.00	17.50	-0.50	-2.78	1.65	10.41
Brazil	3.09	3.47	3.00	3.00	3.42	2.33	3.00	2.83	10.55	8.10	9.00	8.50	-0.50	-5.56	0.40	4.94
<b>Australia</b>	13.05	12.37	13.00	13.00	3.11	2.10	2.46	2.46	40.55	25.96	32.00	32.00	0.00	0.00	6.04	23.27
<b>Africa</b>																
Egypt	1.45	1.35	1.40	1.40	6.55	6.57	6.57	6.57	9.50	8.87	9.20	9.20	0.00	0.00	0.33	3.72
Morocco	2.44	2.50	2.20	2.20	1.11	1.66	1.12	1.12	2.71	4.16	2.47	2.47	0.00	0.00	-1.69	-40.63
Algeria	1.80	1.80	1.80	1.80	2.00	1.50	1.67	1.67	3.60	2.70	3.00	3.00	0.00	0.00	0.30	11.11
Ethiopia	1.90	1.90	1.90	1.90	3.05	3.05	3.00	3.16	5.80	5.80	5.70	6.00	0.30	5.26	0.20	3.45
<b>Middle East</b>																
Turkey	6.80	7.20	7.25	7.25	2.54	2.92	2.62	2.62	17.25	21.00	19.00	19.00	0.00	0.00	-2.00	-9.52
Iran	6.20	6.20	6.20	6.20	2.13	2.26	2.34	2.34	13.20	14.00	14.50	14.50	0.00	0.00	0.50	3.57
Iraq	2.10	2.60	2.70	2.70	1.52	2.00	2.11	2.22	3.20	5.20	5.70	6.00	0.30	5.26	0.80	15.38
Syria	1.18	1.20	1.30	1.30	1.31	2.00	2.15	2.15	1.55	2.40	2.80	2.80	0.00	0.00	0.40	16.67
<b>Mexico</b>	0.60	0.56	0.46	0.46	6.06	6.21	5.65	5.65	3.61	3.48	2.60	2.60	0.00	0.00	-0.88	-25.20
<b>Others</b>	7.34	7.34	7.60	7.55	2.76	2.81	2.95	2.94	20.25	20.60	22.43	22.17	-0.26	-1.16	1.57	7.61

**Table 03 Total Coarse Grain Area, Yield, and Production**

Country / Region	Area (Million hectares)				Yield (Metric tons per hectare)				Production (Million metric tons)				Change in Production			
	Prel.		2024/25 Proj.		Prel.		2024/25 Proj.		Prel.		2024/25 Proj.		From last month		From last year	
	2022/23	2023/24	Oct	Nov	2022/23	2023/24	Oct	Nov	2022/23	2023/24	Oct	Nov	MMT	Percent	MMT	Percent
<b>World</b>	337.82	338.36	334.92	335.63	4.31	4.45	4.48	4.47	1,454.83	1,504.63	1,500.11	1,499.71	-0.40	-0.03	-4.92	-0.33
<b>United States</b>	35.18	38.99	36.89	36.89	10.13	10.33	10.80	10.77	356.45	402.88	398.41	397.28	-1.13	-0.28	-5.60	-1.39
<b>Total Foreign</b>	302.64	299.36	298.03	298.74	3.63	3.68	3.70	3.69	1,098.38	1,101.75	1,101.70	1,102.43	0.73	0.07	0.68	0.06
<b>China</b>	45.55	46.65	47.14	47.14	6.27	6.37	6.37	6.37	285.70	297.14	300.30	300.30	0.00	0.00	3.16	1.06
<b>European Union</b>	26.54	26.04	26.23	26.25	5.01	5.24	5.26	5.24	133.06	136.42	137.86	137.56	-0.30	-0.22	1.14	0.84
<b>United Kingdom</b>	1.37	1.38	1.47	1.47	6.33	5.87	5.79	5.72	8.67	8.08	8.53	8.43	-0.10	-1.17	0.35	4.30
<b>South America</b>																
Brazil	24.48	23.60	24.51	24.51	5.86	5.43	5.45	5.45	143.48	128.06	133.53	133.53	0.00	0.00	5.47	4.27
Argentina	9.66	9.32	8.91	8.91	4.55	6.26	6.77	6.77	43.91	58.37	60.29	60.29	0.00	0.00	1.92	3.29
<b>Former Soviet Union - 12</b>																
Russia	13.60	12.88	11.85	11.85	3.25	3.30	3.00	2.91	44.13	42.54	35.50	34.50	-1.00	-2.82	-8.04	-18.90
Ukraine	6.32	6.24	5.95	5.95	5.37	6.38	5.45	5.45	33.93	39.78	32.42	32.42	0.00	0.00	-7.36	-18.50
Kazakhstan	2.63	2.87	2.65	2.65	1.79	1.40	1.73	1.83	4.71	4.01	4.59	4.84	0.25	5.45	0.83	20.77
Belarus	1.03	1.05	1.12	1.18	3.11	3.09	3.21	3.39	3.20	3.23	3.58	3.98	0.40	11.17	0.75	23.22
<b>Africa</b>																
Nigeria	13.50	13.40	13.50	13.50	1.61	1.42	1.49	1.45	21.70	19.01	20.10	19.60	-0.50	-2.49	0.59	3.09
South Africa	3.13	3.20	3.34	3.34	5.61	4.35	5.27	5.27	17.53	13.91	17.60	17.60	0.00	0.00	3.69	26.54
Tanzania	5.30	5.50	5.60	5.60	1.36	1.51	1.67	1.67	7.23	8.33	9.33	9.33	0.00	0.00	1.00	12.01
Burkina Faso	4.09	4.20	4.20	4.20	1.16	1.12	1.13	1.13	4.73	4.72	4.75	4.75	0.00	0.00	0.04	0.74
Ethiopia	5.45	5.41	5.64	5.64	3.21	3.25	3.18	3.18	17.47	17.56	17.91	17.91	0.00	0.00	0.35	1.99
Egypt	1.10	1.12	1.09	1.09	7.52	7.19	7.22	7.22	8.28	8.07	7.88	7.88	0.00	0.00	-0.19	-2.35
Mali	5.20	4.80	4.90	4.90	1.38	1.43	1.43	1.43	7.15	6.86	7.00	7.00	0.00	0.00	0.14	2.07
<b>India</b>	23.90	25.02	24.85	24.85	2.38	2.28	2.32	2.32	56.78	57.16	57.60	57.60	0.00	0.00	0.44	0.78
<b>Southeast Asia</b>																
Indonesia	3.50	3.70	3.80	3.80	3.54	3.43	3.47	3.47	12.40	12.70	13.20	13.20	0.00	0.00	0.50	3.94
Philippines	2.54	2.49	2.55	2.55	3.28	3.25	3.25	3.25	8.32	8.10	8.30	8.30	0.00	0.00	0.20	2.47
Vietnam	0.89	0.87	0.85	0.85	4.99	5.00	5.06	5.06	4.42	4.35	4.30	4.30	0.00	0.00	-0.05	-1.15
Thailand	1.21	1.25	1.26	1.26	4.35	4.29	4.34	4.34	5.25	5.35	5.45	5.45	0.00	0.00	0.10	1.87
<b>Mexico</b>	8.64	7.70	8.05	7.95	3.92	3.74	3.77	3.76	33.88	28.82	30.36	29.86	-0.50	-1.65	1.04	3.61
<b>Canada</b>	5.74	5.24	4.94	4.94	5.32	5.25	5.33	5.33	30.54	27.52	26.33	26.33	0.00	0.00	-1.20	-4.35
<b>Australia</b>	5.69	5.63	5.91	5.91	3.31	2.56	2.75	2.75	18.84	14.44	16.27	16.27	0.00	0.00	1.83	12.64
<b>Middle East</b>																
Turkey	4.57	4.59	4.55	4.55	3.25	3.72	3.31	3.22	14.84	17.05	15.06	14.66	-0.40	-2.66	-2.39	-13.99
Iran	1.86	1.86	1.81	1.81	2.38	2.38	2.50	2.50	4.42	4.42	4.52	4.52	0.00	0.00	0.10	2.26
<b>Others</b>	75.19	73.37	71.38	72.11	1.65	1.71	1.67	1.69	123.83	125.77	119.16	122.03	2.88	2.42	-3.73	-2.97

World and Selected Countries and Regions; Coarse Grain includes: Barley, Corn, Millet, Mixed Grains, Oats, Rye and Sorghum

**Table 04 Corn Area, Yield, and Production**

Country / Region	Area (Million hectares)				Yield (Metric tons per hectare)				Production (Million metric tons)				Change in Production			
	2022/23	Prel.	2024/25 Proj.		2022/23	Prel.	2024/25 Proj.		2022/23	Prel.	2024/25 Proj.		From last month		From last year	
		2023/24	Oct	Nov		2023/24	Oct	Nov		2023/24	Oct	Nov	MMT	Percent	MMT	Percent
<b>World</b>	202.14	205.16	201.53	203.07	5.75	5.99	6.04	6.00	1,162.99	1,229.11	1,217.19	1,219.40	2.21	0.18	-9.71	-0.79
<b>United States</b>	31.85	35.01	33.47	33.47	10.89	11.13	11.54	11.49	346.74	389.67	386.18	384.64	-1.54	-0.40	-5.02	-1.29
<b>Total Foreign</b>	170.29	170.15	168.06	169.60	4.79	4.93	4.94	4.92	816.26	839.45	831.01	834.76	3.75	0.45	-4.69	-0.56
<b>China</b>	43.07	44.22	44.70	44.70	6.44	6.53	6.53	6.53	277.20	288.84	292.00	292.00	0.00	0.00	3.16	1.09
<b>South America</b>																
Brazil	22.40	21.50	22.30	22.30	6.12	5.67	5.70	5.70	137.00	122.00	127.00	127.00	0.00	0.00	5.00	4.10
Argentina	7.20	7.00	6.40	6.40	5.14	7.14	7.97	7.97	37.00	50.00	51.00	51.00	0.00	0.00	1.00	2.00
Bolivia	0.47	0.44	0.42	0.43	2.67	2.49	2.56	2.56	1.26	1.09	1.08	1.10	0.03	2.33	0.02	1.38
<b>European Union</b>	8.80	8.22	8.60	8.62	5.95	7.47	6.86	6.82	52.33	61.45	59.00	58.80	-0.20	-0.34	-2.65	-4.32
<b>Africa</b>																
South Africa	2.95	3.00	3.15	3.15	5.81	4.47	5.40	5.40	17.10	13.40	17.00	17.00	0.00	0.00	3.60	26.87
Nigeria	5.80	5.70	5.50	5.50	2.23	1.94	2.00	2.00	12.95	11.05	11.00	11.00	0.00	0.00	-0.05	-0.48
Ethiopia	2.55	2.50	2.55	2.55	4.00	4.00	4.00	4.00	10.20	10.00	10.20	10.20	0.00	0.00	0.20	2.00
Egypt	0.93	0.95	0.92	0.92	8.00	7.58	7.61	7.61	7.44	7.20	7.00	7.00	0.00	0.00	-0.20	-2.78
Tanzania	4.00	4.20	4.30	4.30	1.48	1.67	1.86	1.86	5.90	7.00	8.00	8.00	0.00	0.00	1.00	14.29
Malawi	1.75	1.79	1.50	1.50	2.12	1.96	1.33	1.93	3.72	3.51	2.00	2.90	0.90	45.00	-0.61	-17.38
Zambia	1.12	1.42	0.69	0.69	2.43	2.30	2.20	2.20	2.71	3.26	1.51	1.51	0.00	0.00	-1.75	-53.72
Kenya	2.16	2.20	2.00	2.15	1.43	1.95	1.85	1.86	3.09	4.28	3.70	4.00	0.30	8.11	-0.28	-6.63
Uganda	2.15	2.27	1.10	2.30	2.20	2.18	2.55	2.17	4.74	4.95	2.80	5.00	2.20	78.57	0.06	1.11
Zimbabwe	1.00	1.00	0.90	0.90	1.45	1.50	0.61	0.71	1.45	1.50	0.55	0.64	0.09	15.45	-0.87	-57.67
<b>Former Soviet Union - 12</b>																
Ukraine	4.05	4.20	4.10	4.10	6.67	7.74	6.39	6.39	27.00	32.50	26.20	26.20	0.00	0.00	-6.30	-19.38
Russia	2.64	2.40	2.50	2.50	6.00	6.92	5.20	5.20	15.83	16.60	13.00	13.00	0.00	0.00	-3.60	-21.69
<b>South Asia</b>																
India	10.74	11.24	10.80	10.80	3.54	3.35	3.52	3.52	38.09	37.67	38.00	38.00	0.00	0.00	0.34	0.89
Pakistan	1.72	1.64	1.50	1.50	6.39	6.00	6.33	6.33	10.99	9.85	9.50	9.50	0.00	0.00	-0.35	-3.52
Nepal	0.97	0.97	0.97	0.97	2.82	2.82	2.82	2.82	2.72	2.72	2.72	2.72	0.00	0.00	0.00	0.00
<b>Southeast Asia</b>																
Indonesia	3.50	3.70	3.80	3.80	3.54	3.43	3.47	3.47	12.40	12.70	13.20	13.20	0.00	0.00	0.50	3.94
Philippines	2.54	2.49	2.55	2.55	3.28	3.25	3.25	3.25	8.32	8.10	8.30	8.30	0.00	0.00	0.20	2.47
Vietnam	0.89	0.87	0.85	0.85	4.99	5.00	5.06	5.06	4.42	4.35	4.30	4.30	0.00	0.00	-0.05	-1.15
Thailand	1.18	1.22	1.23	1.23	4.41	4.34	4.39	4.39	5.20	5.30	5.40	5.40	0.00	0.00	0.10	1.89
<b>Mexico</b>	6.89	6.10	6.40	6.30	4.07	3.85	3.91	3.89	28.08	23.50	25.00	24.50	-0.50	-2.00	1.00	4.26
<b>Canada</b>	1.44	1.52	1.45	1.45	10.07	10.15	10.48	10.48	14.54	15.42	15.20	15.20	0.00	0.00	-0.22	-1.43
<b>Turkey</b>	0.53	0.65	0.56	0.56	12.83	12.92	13.04	12.50	6.80	8.40	7.30	7.00	-0.30	-4.11	-1.40	-16.67
<b>Others</b>	26.86	26.75	26.33	26.59	2.52	2.72	2.62	2.64	67.80	72.81	69.06	70.29	1.24	1.79	-2.52	-3.46

World and Selected Countries and Regions

**Table 05 Barley Area, Yield, and Production**

Country / Region	Area (Million hectares)				Yield (Metric tons per hectare)				Production (Million metric tons)				Change in Production			
	Prel.		2024/25 Proj.		Prel.		2024/25 Proj.		Prel.		2024/25 Proj.		From last month		From last year	
	2022/23	2023/24	Oct	Nov	2022/23	2023/24	Oct	Nov	2022/23	2023/24	Oct	Nov	MMT	Percent	MMT	Percent
<b>World</b>	47.14	46.73	45.66	45.66	3.20	3.05	3.13	3.11	150.90	142.60	142.89	141.80	-1.09	-0.76	-0.80	-0.56
<b>United States</b>	0.98	1.04	0.76	0.76	3.86	3.89	4.13	4.13	3.79	4.05	3.13	3.13	0.00	0.00	-0.92	-22.70
<b>Total Foreign</b>	46.15	45.68	44.90	44.90	3.19	3.03	3.11	3.09	147.11	138.54	139.76	138.67	-1.09	-0.78	0.12	0.09
<b>European Union</b>	10.32	10.37	10.35	10.35	5.02	4.62	4.91	4.90	51.83	47.87	50.85	50.75	-0.10	-0.20	2.89	6.03
<b>United Kingdom</b>	1.12	1.14	1.20	1.20	6.62	6.12	6.08	6.00	7.39	6.96	7.30	7.20	-0.10	-1.37	0.24	3.40
<b>Former Soviet Union - 12</b>																
Russia	7.75	7.65	6.70	6.70	2.77	2.68	2.61	2.46	21.50	20.50	17.50	16.50	-1.00	-5.71	-4.00	-19.51
Ukraine	1.95	1.68	1.50	1.50	3.13	3.78	3.60	3.60	6.10	6.35	5.40	5.40	0.00	0.00	-0.95	-14.96
Kazakhstan	2.18	2.43	2.25	2.25	1.51	1.08	1.51	1.60	3.29	2.61	3.40	3.60	0.20	5.88	0.99	37.72
Belarus	0.40	0.40	0.40	0.40	2.75	2.75	3.00	3.00	1.10	1.10	1.20	1.20	0.00	0.00	0.10	9.09
Azerbaijan	0.39	0.36	0.36	0.36	2.85	2.99	3.06	3.06	1.10	1.07	1.10	1.10	0.00	0.00	0.03	3.09
<b>Canada</b>	2.64	2.70	2.32	2.32	3.79	3.29	3.23	3.23	9.99	8.91	7.50	7.50	0.00	0.00	-1.41	-15.78
<b>Australia</b>	4.13	4.20	4.45	4.45	3.43	2.57	2.74	2.74	14.14	10.80	12.20	12.20	0.00	0.00	1.40	12.96
<b>Middle East</b>																
Turkey	3.80	3.70	3.75	3.75	1.95	2.16	1.89	1.87	7.40	8.00	7.10	7.00	-0.10	-1.41	-1.00	-12.50
Iran	1.65	1.65	1.60	1.60	1.82	1.82	1.94	1.94	3.00	3.00	3.10	3.10	0.00	0.00	0.10	3.33
Iraq	0.21	0.16	1.00	1.00	1.12	1.29	1.40	1.40	0.24	0.20	1.40	1.40	0.00	0.00	1.20	600.00
Syria	1.12	1.10	1.10	1.10	0.16	0.45	1.09	1.09	0.18	0.50	1.20	1.20	0.00	0.00	0.70	140.00
<b>Africa</b>																
Ethiopia	0.98	0.98	0.98	0.98	2.22	2.50	2.54	2.54	2.18	2.45	2.49	2.49	0.00	0.00	0.04	1.43
Morocco	1.14	1.17	0.80	0.80	0.61	1.15	0.83	0.83	0.70	1.35	0.66	0.66	0.00	0.00	-0.69	-51.11
Algeria	1.03	1.03	1.03	1.03	1.37	1.00	1.17	1.17	1.40	1.03	1.20	1.20	0.00	0.00	0.18	17.07
Tunisia	0.30	0.11	0.35	0.35	1.53	0.82	1.57	1.57	0.46	0.09	0.55	0.55	0.00	0.00	0.46	517.98
South Africa	0.10	0.11	0.10	0.10	2.99	3.49	4.00	4.00	0.30	0.38	0.40	0.40	0.00	0.00	0.02	6.10
<b>South America</b>																
Argentina	1.59	1.30	1.25	1.25	2.95	3.92	3.92	3.92	4.70	5.10	4.90	4.90	0.00	0.00	-0.20	-3.92
Uruguay	0.21	0.18	0.19	0.19	4.25	4.44	4.34	4.34	0.90	0.80	0.83	0.83	0.00	0.00	0.03	3.13
Brazil	0.13	0.12	0.12	0.12	3.87	3.79	3.83	3.83	0.50	0.46	0.46	0.46	0.00	0.00	0.01	1.10
<b>India</b>	0.45	0.63	0.55	0.55	3.03	3.05	3.08	3.08	1.37	1.91	1.70	1.70	0.00	0.00	-0.21	-11.19
<b>China</b>	0.56	0.50	0.50	0.50	3.91	4.00	4.00	4.00	2.19	2.00	2.00	2.00	0.00	0.00	0.00	0.00
<b>Mexico</b>	0.30	0.29	0.29	0.29	2.69	2.69	2.69	2.69	0.80	0.78	0.78	0.78	0.00	0.00	0.00	0.00
<b>Afghanistan</b>	0.06	0.08	0.07	0.07	1.53	1.38	1.43	1.43	0.10	0.11	0.10	0.10	0.00	0.00	-0.01	-9.09
<b>Others</b>	1.67	1.67	1.70	1.70	2.56	2.54	2.62	2.63	4.28	4.23	4.45	4.46	0.01	0.18	0.23	5.34

World and Selected Countries and Regions

**Table 06 Oats Area, Yield, and Production**

Country / Region	Area (Million hectares)				Yield (Metric tons per hectare)				Production (Million metric tons)				Change in Production			
	2022/23	Prel.	2024/25 Proj.		2022/23	Prel.	2024/25 Proj.		2022/23	Prel.	2024/25 Proj.		From last month		From last year	
		2023/24	Oct	Nov		2023/24	Oct	Nov		2023/24	Oct	Nov	MMT	Percent	MMT	Percent
<b>World</b>	9.39	8.36	8.61	8.61	2.70	2.32	2.54	2.55	25.34	19.35	21.90	21.95	0.05	0.23	2.60	13.44
<b>United States</b>	0.36	0.34	0.36	0.36	2.35	2.46	2.74	2.74	0.84	0.83	0.98	0.98	0.00	0.00	0.16	18.84
<b>Total Foreign</b>	9.04	8.02	8.25	8.25	2.71	2.31	2.53	2.54	24.50	18.52	20.91	20.96	0.05	0.24	2.44	13.20
<b>European Union</b>	2.35	2.30	2.40	2.40	3.20	2.58	3.17	3.17	7.51	5.93	7.60	7.60	0.00	0.00	1.67	28.14
<b>Former Soviet Union - 12</b>																
Russia	2.13	1.77	1.70	1.70	2.11	1.86	1.91	1.91	4.50	3.30	3.25	3.25	0.00	0.00	-0.05	-1.52
Ukraine	0.15	0.17	0.17	0.17	2.47	2.53	2.35	2.35	0.38	0.43	0.40	0.40	0.00	0.00	-0.03	-6.98
Belarus	0.16	0.16	0.16	0.16	2.42	2.26	2.06	2.06	0.38	0.35	0.32	0.32	0.00	0.00	-0.03	-8.57
Kazakhstan	0.20	0.19	0.19	0.19	1.16	0.79	1.32	1.58	0.23	0.15	0.25	0.30	0.05	20.00	0.15	100.00
<b>Canada</b>	1.40	0.83	0.95	0.95	3.73	3.20	3.17	3.17	5.23	2.64	3.00	3.00	0.00	0.00	0.36	13.51
<b>South America</b>																
Argentina	0.26	0.28	0.30	0.30	1.67	2.03	2.00	2.00	0.43	0.57	0.60	0.60	0.00	0.00	0.04	6.19
Brazil	0.53	0.52	0.49	0.49	2.22	2.24	2.16	2.16	1.18	1.17	1.06	1.06	0.00	0.00	-0.11	-9.25
Chile	0.07	0.09	0.10	0.10	4.63	5.39	4.75	4.75	0.33	0.46	0.48	0.48	0.00	0.00	0.02	3.71
Uruguay	0.02	0.01	0.02	0.02	2.40	2.20	2.00	2.00	0.04	0.02	0.03	0.03	0.00	0.00	0.01	36.36
<b>Oceania</b>																
Australia	0.75	0.70	0.73	0.73	2.13	1.43	1.66	1.66	1.59	1.00	1.20	1.20	0.00	0.00	0.20	20.00
New Zealand	0.01	0.00	0.00	0.00	6.60	6.50	6.25	6.25	0.03	0.03	0.03	0.03	0.00	0.00	0.00	-3.85
<b>China</b>	0.41	0.41	0.41	0.41	1.48	1.48	1.48	1.48	0.60	0.60	0.60	0.60	0.00	0.00	0.00	0.00
<b>Africa</b>																
Algeria	0.08	0.08	0.08	0.08	1.31	1.31	1.31	1.31	0.11	0.11	0.11	0.11	0.00	0.00	0.00	0.00
Morocco	0.01	0.02	0.02	0.02	0.31	0.40	0.40	0.40	0.00	0.01	0.01	0.01	0.00	0.00	0.00	0.00
South Africa	0.03	0.03	0.03	0.03	1.04	1.46	2.33	2.33	0.03	0.04	0.07	0.07	0.00	0.00	0.03	70.73
<b>Other Europe</b>																
United Kingdom	0.18	0.17	0.20	0.20	5.72	4.97	5.00	5.00	1.01	0.83	1.00	1.00	0.00	0.00	0.17	20.48
Norway	0.06	0.07	0.07	0.07	4.62	4.29	4.29	4.29	0.29	0.30	0.30	0.30	0.00	0.00	0.00	0.00
Serbia	0.02	0.02	0.02	0.02	2.80	3.00	3.00	3.00	0.04	0.06	0.06	0.06	0.00	0.00	0.00	0.00
Albania	0.02	0.02	0.02	0.02	2.27	2.27	2.27	2.27	0.03	0.03	0.03	0.03	0.00	0.00	0.00	0.00
Bosnia and Herzegovina	0.01	0.01	0.01	0.01	4.00	3.43	3.43	3.43	0.04	0.02	0.02	0.02	0.00	0.00	0.00	0.00
<b>Turkey</b>	0.14	0.13	0.13	0.13	2.64	2.60	2.62	2.62	0.37	0.33	0.34	0.34	0.00	0.00	0.02	4.62
<b>Mexico</b>	0.05	0.03	0.04	0.04	2.22	2.20	2.00	2.00	0.11	0.06	0.08	0.08	0.00	0.00	0.03	45.45
<b>Others</b>	0.03	0.06	0.05	0.05	1.63	1.68	1.78	1.78	0.05	0.09	0.08	0.08	0.00	0.00	-0.01	-12.77

World and Selected Countries and Regions



**Table 07 Rye Area, Yield, and Production**

Country / Region	Area (Million hectares)				Yield (Metric tons per hectare)				Production (Million metric tons)				Change in Production						
	2022/23	Prel.		2024/25 Proj.		2022/23	Prel.		2024/25 Proj.		2022/23	Prel.		2024/25 Proj.		From last month		From last year	
		2023/24	Oct	Nov	2023/24		Oct	Nov	2023/24	Oct		Nov	MMT	Percent	MMT	Percent			
<b>World</b>	3.69	3.65	3.41	3.41	3.29	3.20	3.20	3.20	12.15	11.71	10.93	10.93	0.00	0.00	-0.78	-6.66			
<b>United States</b>	0.14	0.13	0.16	0.16	2.26	2.03	2.29	2.29	0.32	0.26	0.37	0.37	0.00	0.00	0.11	41.67			
<b>Total Foreign</b>	3.55	3.52	3.25	3.25	3.33	3.25	3.25	3.25	11.83	11.44	10.55	10.55	0.00	0.00	-0.89	-7.77			
<b>European Union</b>	1.77	1.88	1.75	1.75	4.26	4.06	4.11	4.11	7.55	7.63	7.20	7.20	0.00	0.00	-0.43	-5.67			
<b>Former Soviet Union - 12</b>																			
Russia	0.88	0.79	0.66	0.66	2.27	2.15	2.05	2.05	2.00	1.70	1.35	1.35	0.00	0.00	-0.35	-20.59			
Belarus	0.30	0.31	0.32	0.32	2.50	2.52	2.38	2.38	0.75	0.78	0.76	0.76	0.00	0.00	-0.02	-2.56			
Ukraine	0.10	0.08	0.07	0.07	3.15	3.00	2.86	2.86	0.32	0.24	0.20	0.20	0.00	0.00	-0.04	-16.67			
Kazakhstan	0.03	0.02	0.02	0.02	1.76	0.86	1.15	1.15	0.06	0.02	0.02	0.02	0.00	0.00	0.01	27.78			
<b>Turkey</b>	0.10	0.11	0.11	0.11	2.79	2.91	2.91	2.91	0.27	0.32	0.32	0.32	0.00	0.00	0.00	0.00			
<b>Canada</b>	0.15	0.12	0.12	0.12	3.42	3.09	3.03	3.03	0.52	0.36	0.36	0.36	0.00	0.00	0.00	0.00			
<b>South America</b>																			
Chile	0.00	0.00	0.00	0.00	5.00	0.00	0.00	0.00	0.01	0.00	0.00	0.00	0.00	100.00	0.00	100.00			
Argentina	0.11	0.12	0.11	0.11	1.66	1.85	1.76	1.76	0.18	0.22	0.19	0.19	0.00	0.00	-0.03	-15.14			
<b>Other Europe</b>																			
Bosnia and Herzegovina	0.00	0.00	0.00	0.00	3.00	3.00	3.00	3.00	0.01	0.01	0.01	0.01	0.00	0.00	0.00	-33.33			
Switzerland	0.00	0.00	0.00	0.00	5.00	5.00	5.00	5.00	0.01	0.01	0.01	0.01	0.00	0.00	0.00	0.00			
Serbia	0.01	0.01	0.01	0.01	3.00	3.33	3.00	3.00	0.02	0.02	0.02	0.02	0.00	0.00	0.00	-10.00			
<b>Australia</b>	0.05	0.05	0.05	0.05	0.71	0.71	0.71	0.71	0.03	0.03	0.03	0.03	0.00	0.00	0.00	0.00			
<b>Others</b>	0.05	0.04	0.04	0.04	2.48	2.40	2.20	2.20	0.11	0.10	0.09	0.09	0.00	0.00	-0.01	-12.62			

World and Selected Countries and Regions

**Table 08 Sorghum Area, Yield, and Production**

Country / Region	Area (Million hectares)				Yield (Metric tons per hectare)				Production (Million metric tons)				Change in Production			
	Prel.		2024/25 Proj.		Prel.		2024/25 Proj.		Prel.		2024/25 Proj.		From last month		From last year	
	2022/23	2023/24	Oct	Nov	2022/23	2023/24	Oct	Nov	2022/23	2023/24	Oct	Nov	MMT	Percent	MMT	Percent
<b>World</b>	40.61	40.04	41.93	40.77	1.42	1.46	1.49	1.52	57.47	58.38	62.64	61.83	-0.81	-1.30	3.44	5.90
<b>United States</b>	1.85	2.48	2.14	2.14	2.58	3.26	3.62	3.82	4.77	8.07	7.74	8.15	0.41	5.30	0.08	0.94
<b>Total Foreign</b>	38.76	37.57	39.79	38.64	1.36	1.34	1.38	1.39	52.70	50.31	54.90	53.68	-1.22	-2.23	3.37	6.69
<b>Africa</b>																
Nigeria	5.70	5.70	6.10	6.10	1.19	1.12	1.18	1.13	6.81	6.40	7.20	6.90	-0.30	-4.17	0.50	7.81
Ethiopia	1.55	1.48	1.65	1.65	2.67	2.71	2.48	2.48	4.14	4.01	4.10	4.10	0.00	0.00	0.09	2.24
Sudan	7.24	5.99	7.50	6.00	0.72	0.51	0.67	0.67	5.25	3.06	5.00	4.00	-1.00	-20.00	0.95	30.93
Burkina Faso	1.96	1.90	1.90	1.90	1.03	0.98	1.00	1.00	2.01	1.86	1.90	1.90	0.00	0.00	0.04	2.21
Mali	1.64	1.50	1.50	1.50	0.97	1.02	1.00	1.00	1.58	1.53	1.50	1.50	0.00	0.00	-0.03	-1.83
Niger	3.79	3.70	3.70	3.70	0.55	0.46	0.51	0.51	2.10	1.70	1.90	1.90	0.00	0.00	0.20	11.76
Cameroon	0.74	0.74	0.74	0.74	1.62	1.62	1.62	1.62	1.20	1.20	1.20	1.20	0.00	0.00	0.00	0.00
Tanzania	1.00	1.00	1.00	1.00	1.00	1.00	1.00	1.00	1.00	1.00	1.00	1.00	0.00	0.00	0.00	0.00
Egypt	0.15	0.15	0.15	0.15	5.00	5.20	5.27	5.27	0.75	0.78	0.79	0.79	0.00	0.00	0.01	1.28
Uganda	0.32	0.32	0.25	0.32	0.90	0.83	0.90	0.84	0.29	0.27	0.23	0.27	0.05	20.00	0.00	1.50
Ghana	0.31	0.31	0.31	0.31	1.29	1.42	1.29	1.13	0.40	0.44	0.40	0.35	-0.05	-12.50	-0.09	-20.27
Mozambique	0.29	0.27	0.28	0.28	0.51	0.55	0.33	0.33	0.15	0.15	0.09	0.09	0.00	0.00	-0.06	-40.00
South Africa	0.03	0.04	0.04	0.04	2.76	2.25	3.25	3.25	0.09	0.09	0.13	0.13	0.00	0.00	0.04	44.44
<b>Mexico</b>	1.40	1.29	1.32	1.32	3.50	3.49	3.41	3.41	4.89	4.49	4.50	4.50	0.00	0.00	0.02	0.33
<b>South America</b>																
Argentina	0.50	0.62	0.85	0.85	3.22	3.99	4.24	4.24	1.61	2.49	3.60	3.60	0.00	0.00	1.11	44.75
Brazil	1.42	1.46	1.60	1.60	3.38	3.03	3.13	3.13	4.79	4.43	5.00	5.00	0.00	0.00	0.57	12.97
<b>South Asia</b>																
India	3.54	4.08	4.00	4.00	1.08	1.16	1.10	1.10	3.81	4.74	4.40	4.40	0.00	0.00	-0.34	-7.11
Pakistan	0.06	0.05	0.05	0.05	0.83	0.83	0.82	0.82	0.05	0.04	0.04	0.04	0.00	0.00	0.00	5.13
<b>China</b>	0.68	0.63	0.63	0.63	4.58	4.76	4.76	4.76	3.09	3.00	3.00	3.00	0.00	0.00	0.00	0.00
<b>Australia</b>	0.69	0.60	0.60	0.60	3.84	3.67	4.00	4.00	2.64	2.20	2.40	2.40	0.00	0.00	0.20	9.09
<b>European Union</b>	0.12	0.16	0.21	0.21	4.14	5.13	5.05	5.05	0.51	0.80	1.06	1.06	0.00	0.00	0.26	32.33
<b>Others</b>	5.65	5.59	5.42	5.69	0.98	1.01	1.01	0.97	5.54	5.66	5.47	5.55	0.08	1.50	-0.11	-1.96

World and Selected Countries and Regions

**Table 09 Rice Area, Yield, and Production**  
**World and Selected Countries and Regions**

Country / Region	Area (Million hectares)				Yield (Metric tons per hectare)				Production (Million metric tons)				Change in Production			
	2022/23	Prel. 2023/24	2024/25 Proj.		2022/23	Prel. 2023/24	2024/25 Proj.		2022/23	Prel. 2023/24	2024/25 Proj.		From last month		From last year	
			Oct	Nov			Oct	Nov			Oct	Nov	MMT	Percent	MMT	Percent
<b>World</b>	165.69	166.16	167.57	168.79	4.66	4.69	4.73	4.72	516.69	522.18	530.44	533.81	3.37	0.64	11.63	2.23
<b>United States</b>	0.88	1.16	1.17	1.17	8.28	8.57	8.51	8.51	5.08	6.93	6.98	6.98	0.00	0.00	0.05	0.69
<b>Total Foreign</b>	164.81	165.01	166.39	167.62	4.64	4.67	4.70	4.70	511.60	515.25	523.46	526.83	3.37	0.64	11.58	2.25
<b>East Asia</b>																
China	29.45	28.95	29.00	29.00	7.08	7.14	7.19	7.19	145.95	144.62	146.00	146.00	0.00	0.00	1.38	0.95
Japan	1.50	1.48	1.46	1.46	6.86	6.78	6.92	6.92	7.48	7.30	7.35	7.35	0.00	0.00	0.05	0.73
Korea, South	0.73	0.71	0.69	0.70	6.87	6.92	6.86	6.93	3.76	3.70	3.60	3.66	0.06	1.72	-0.05	-1.22
Korea, North	0.54	0.54	0.54	0.54	3.87	4.18	4.18	4.18	1.36	1.47	1.47	1.47	0.00	0.00	0.00	0.00
<b>South Asia</b>																
India	47.83	47.83	49.00	50.00	4.26	4.32	4.35	4.35	135.76	137.83	142.00	145.00	3.00	2.11	7.18	5.21
Bangladesh	11.60	11.75	11.70	11.50	4.70	4.72	4.78	4.80	36.35	37.00	37.30	36.80	-0.50	-1.34	-0.20	-0.54
Pakistan	2.98	3.64	3.80	3.80	3.69	4.07	3.95	3.95	7.32	9.87	10.00	10.00	0.00	0.00	0.13	1.33
Nepal	1.45	1.50	1.45	1.55	3.79	3.80	3.72	3.74	3.65	3.80	3.60	3.87	0.27	7.39	0.07	1.84
Sri Lanka	1.15	1.16	1.15	1.15	3.61	4.22	4.48	4.48	2.83	3.33	3.50	3.50	0.00	0.00	0.17	5.04
<b>Southeast Asia</b>																
Indonesia	11.30	11.00	11.20	11.20	4.72	4.73	4.78	4.78	33.90	33.02	34.00	34.00	0.00	0.00	0.98	2.97
Vietnam	7.12	6.90	6.95	6.95	6.10	6.10	6.10	6.10	27.14	26.30	26.50	26.50	0.00	0.00	0.20	0.76
Thailand	11.07	10.65	10.70	10.70	2.86	2.85	2.85	2.85	20.91	20.00	20.10	20.10	0.00	0.00	0.10	0.50
Burma	6.80	6.80	6.80	6.80	2.71	2.73	2.78	2.72	11.80	11.90	12.10	11.85	-0.25	-2.07	-0.05	-0.42
Philippines	4.85	4.74	4.70	4.70	4.13	4.12	4.15	4.15	12.63	12.33	12.30	12.30	0.00	0.00	-0.03	-0.20
Cambodia	3.47	3.58	3.64	3.64	3.29	3.29	3.32	3.32	6.96	7.17	7.38	7.38	0.00	0.00	0.20	2.83
Laos	0.96	0.95	0.97	0.90	3.23	3.21	3.22	3.19	1.95	1.92	1.97	1.81	-0.16	-8.12	-0.11	-5.73
Malaysia	0.66	0.65	0.66	0.66	3.99	3.86	4.08	4.08	1.70	1.62	1.75	1.75	0.00	0.00	0.13	8.02
<b>South America</b>																
Brazil	1.48	1.61	1.60	1.60	6.78	6.60	6.89	6.89	6.82	7.20	7.50	7.50	0.00	0.00	0.30	4.17
Peru	0.42	0.43	0.43	0.43	8.34	8.52	8.60	8.60	2.40	2.50	2.55	2.55	0.00	0.00	0.05	2.00
<b>Africa</b>																
Egypt	0.60	0.63	0.67	0.67	8.70	8.70	8.44	8.44	3.60	3.78	3.90	3.90	0.00	0.00	0.12	3.17
Madagascar	1.60	1.60	1.60	1.60	2.87	2.88	2.75	2.88	2.93	2.94	2.82	2.94	0.13	4.55	0.00	0.00
Nigeria	3.50	3.60	3.50	3.50	2.45	2.47	2.37	2.37	5.41	5.61	5.23	5.23	0.00	0.00	-0.38	-6.74
<b>European Union</b>	0.33	0.36	0.40	0.40	6.11	6.05	6.78	6.78	1.29	1.38	1.72	1.72	0.00	0.00	0.34	24.35
<b>Iran</b>	0.57	0.57	0.57	0.57	5.32	5.30	5.32	5.32	2.00	2.00	2.00	2.00	0.00	0.00	0.01	0.25
<b>Others</b>	12.87	13.40	13.21	13.60	3.03	3.02	3.08	3.09	25.71	26.68	26.83	27.66	0.83	3.09	0.99	3.69

Yield is on a rough basis, before the milling process. Production is on a milled basis, after the milling process.

**Table 10 Total Oilseed Area, Yield, and Production**  
**World and Selected Countries and Regions**

Country / Region	Area (Million hectares)				Yield (Metric tons per hectare)				Production (Million metric tons)				Change in Production			
	2022/23	Prel.	2024/25 Proj.		2022/23	Prel.	2024/25 Proj.		2022/23	Prel.	2024/25 Proj.		From last month		From last year	
		2023/24	Oct	Nov		2023/24	Oct	Nov		2023/24	Oct	Nov	MMT	Percent	MMT	Percent
<b>World Total</b>	--	--	--	--	--	--	--	--	637.80	657.85	687.32	682.22	-5.10	-0.74	24.37	3.70
<b>Total Foreign</b>	--	--	--	--	--	--	--	--	512.05	535.68	552.92	551.07	-1.85	-0.33	15.39	2.87
<b>Oilseed, Copra</b>	--	--	--	--	--	--	--	--	6.00	6.21	5.81	5.81	0.00	0.00	-0.40	-6.50
<b>Oilseed, Palm Kernel</b>	--	--	--	--	--	--	--	--	19.76	20.14	20.86	20.86	0.00	0.00	0.72	3.55
<b>Major Oilseeds</b>	267.51	271.25	276.03	275.50	2.29	2.33	2.39	2.38	612.04	631.49	660.66	655.55	-5.10	-0.77	24.06	3.81
<b>United States</b>	39.91	37.98	40.50	40.50	3.15	3.22	3.32	3.24	125.75	122.16	134.40	131.15	-3.26	-2.42	8.98	7.35
<b>Foreign Oilseeds</b>	227.60	233.26	235.53	235.00	2.14	2.18	2.23	2.23	486.28	509.33	526.25	524.41	-1.85	-0.35	15.08	2.96
<b>South America</b>	71.23	74.28	76.86	76.82	3.01	3.12	3.28	3.28	214.70	231.80	251.77	251.70	-0.07	-0.03	19.90	8.58
Brazil	46.46	47.78	49.56	49.56	3.59	3.32	3.54	3.54	166.77	158.64	175.57	175.57	0.00	0.00	16.93	10.67
Argentina	17.76	19.30	19.82	19.82	1.77	2.81	2.88	2.88	31.45	54.24	56.99	56.99	0.00	0.00	2.74	5.06
Paraguay	3.79	3.90	4.02	4.02	2.77	2.88	2.85	2.85	10.47	11.22	11.44	11.44	0.00	0.00	0.23	2.02
Bolivia	1.83	1.84	1.86	1.86	2.42	2.16	2.17	2.17	4.43	3.98	4.04	4.04	0.00	0.00	0.06	1.51
Uruguay	1.28	1.37	1.46	1.46	1.00	2.52	2.31	2.31	1.28	3.45	3.37	3.37	0.00	0.00	-0.08	-2.21
<b>China</b>	25.90	26.79	26.20	26.20	2.62	2.58	2.61	2.61	67.94	69.08	68.30	68.30	0.00	0.00	-0.78	-1.13
<b>South Asia</b>	43.63	44.49	44.06	44.06	1.04	1.03	1.07	1.06	45.22	46.00	47.17	46.86	-0.30	-0.64	0.86	1.88
India	40.19	40.28	40.28	40.28	1.03	1.00	1.05	1.04	41.29	40.37	42.30	42.08	-0.22	-0.52	1.71	4.25
Pakistan	2.51	2.99	2.51	2.51	1.06	1.27	1.25	1.22	2.67	3.81	3.14	3.05	-0.09	-2.74	-0.76	-19.91
<b>European Union</b>	12.32	12.29	11.98	11.93	2.61	2.71	2.53	2.52	32.13	33.34	30.27	30.08	-0.19	-0.63	-3.26	-9.77
<b>United Kingdom</b>	0.37	0.39	0.28	0.28	3.73	3.11	3.13	3.13	1.36	1.22	0.88	0.88	0.00	0.00	-0.34	-28.04
<b>Former Soviet Union - 12</b>	27.80	29.10	30.94	30.89	1.87	2.04	1.84	1.84	52.01	59.26	56.98	56.84	-0.14	-0.24	-2.42	-4.09
Russia	14.74	14.85	16.00	16.00	1.80	1.89	1.78	1.77	26.55	28.10	28.40	28.30	-0.10	-0.35	0.20	0.71
Ukraine	8.75	10.00	10.45	10.45	2.26	2.55	2.17	2.17	19.80	25.45	22.70	22.70	0.00	0.00	-2.75	-10.81
Uzbekistan	1.07	1.05	1.02	1.02	1.24	1.15	1.22	1.22	1.33	1.21	1.25	1.25	0.00	0.00	0.04	3.23
<b>Canada</b>	10.75	11.16	11.12	11.12	2.37	2.35	2.45	2.45	25.48	26.27	27.24	27.24	0.00	0.00	0.97	3.70
<b>Africa</b>	24.62	24.69	24.25	23.83	1.04	0.97	1.06	1.04	25.67	24.00	25.75	24.73	-1.03	-3.98	0.73	3.04
Nigeria	4.87	4.87	5.07	5.07	1.15	1.15	1.13	1.13	5.61	5.60	5.75	5.75	0.00	0.00	0.15	2.68
South Africa	1.88	1.87	1.96	1.92	2.02	1.50	1.99	2.04	3.80	2.81	3.91	3.91	0.00	0.00	1.11	39.38
Tanzania	1.36	1.47	1.44	1.44	0.91	0.89	0.87	0.87	1.23	1.31	1.25	1.25	0.00	0.00	-0.05	-4.13
<b>Southeast Asia</b>	3.11	3.07	3.04	3.04	1.38	1.38	1.39	1.39	4.30	4.25	4.24	4.24	0.00	0.00	-0.02	-0.38
Burma	1.98	1.97	1.98	1.98	1.22	1.24	1.26	1.26	2.40	2.44	2.50	2.50	0.00	0.00	0.06	2.25
Indonesia	0.87	0.84	0.81	0.81	1.52	1.49	1.48	1.48	1.32	1.26	1.20	1.20	0.00	0.00	-0.06	-4.38
<b>Australia</b>	4.61	4.04	3.80	3.80	2.13	1.81	1.80	1.80	9.82	7.30	6.84	6.84	0.00	0.00	-0.46	-6.34
<b>Turkey</b>	1.47	1.27	1.30	1.30	2.71	2.43	2.58	2.45	3.98	3.09	3.36	3.19	-0.18	-5.21	0.10	3.27
<b>Others</b>	1.81	1.70	1.70	1.73	2.03	2.20	2.03	2.04	3.67	3.73	3.46	3.52	0.06	1.59	-0.21	-5.61

World Total and Total Foreign: (Major Oilseeds plus copra and palm kernel) Major Oilseeds: (soybeans, sunflowerseeds, peanuts(inshell), cottonseed and rapeseed)

**Table 11 Soybean Area, Yield, and Production**

Country / Region	Area (Million hectares)				Yield (Metric tons per hectare)				Production (Million metric tons)				Change in Production			
	Prel.		2024/25 Proj.		Prel.		2024/25 Proj.		Prel.		2024/25 Proj.		From last month		From last year	
	2022/23	2023/24	Oct	Nov	2022/23	2023/24	Oct	Nov	2022/23	2023/24	Oct	Nov	MMT	Percent	MMT	Percent
<b>World</b>	137.11	139.85	145.81	145.83	2.76	2.82	2.94	2.92	378.60	394.73	428.92	425.40	-3.52	-0.82	30.67	7.77
<b>United States</b>	34.87	33.29	34.91	34.91	3.33	3.40	3.57	3.48	116.22	113.27	124.70	121.42	-3.28	-2.63	8.14	7.19
<b>Total Foreign</b>	102.23	106.55	110.90	110.92	2.57	2.64	2.74	2.74	262.38	281.46	304.22	303.99	-0.23	-0.08	22.53	8.00
<b>South America</b>																
Brazil	44.60	45.80	47.30	47.30	3.63	3.34	3.57	3.57	162.00	153.00	169.00	169.00	0.00	0.00	16.00	10.46
Argentina	14.40	16.37	16.90	16.90	1.74	2.95	3.02	3.02	25.00	48.21	51.00	51.00	0.00	0.00	2.79	5.79
Paraguay	3.65	3.75	3.85	3.85	2.81	2.93	2.91	2.91	10.25	11.00	11.20	11.20	0.00	0.00	0.20	1.82
Bolivia	1.60	1.60	1.61	1.61	2.57	2.28	2.30	2.30	4.11	3.65	3.70	3.70	0.00	0.00	0.05	1.37
Uruguay	0.93	1.22	1.30	1.30	0.75	2.62	2.38	2.38	0.70	3.20	3.10	3.10	0.00	0.00	-0.10	-3.13
<b>East Asia</b>																
China	10.24	10.47	10.50	10.50	1.98	1.99	1.97	1.97	20.28	20.84	20.70	20.70	0.00	0.00	-0.14	-0.67
Korea, South	0.06	0.07	0.07	0.07	2.03	2.07	2.06	2.06	0.13	0.14	0.14	0.14	0.00	0.00	0.00	0.71
Korea, North	0.16	0.16	0.16	0.16	1.15	1.15	1.15	1.15	0.18	0.18	0.18	0.18	0.00	0.00	0.00	0.00
Japan	0.15	0.16	0.16	0.16	1.60	1.59	1.64	1.64	0.24	0.25	0.26	0.26	0.00	0.00	0.01	4.86
<b>India</b>	13.08	13.20	13.50	13.50	0.95	0.90	0.95	0.93	12.41	11.88	12.80	12.58	-0.22	-1.70	0.71	5.95
<b>Canada</b>	2.12	2.26	2.30	2.30	3.09	3.09	3.13	3.13	6.54	6.98	7.20	7.20	0.00	0.00	0.22	3.14
<b>Former Soviet Union - 12</b>																
Russia	3.36	3.50	4.10	4.10	1.79	1.94	1.78	1.78	6.00	6.80	7.30	7.30	0.00	0.00	0.50	7.35
Ukraine	1.82	2.00	2.90	2.90	2.25	2.60	2.28	2.28	4.10	5.20	6.60	6.60	0.00	0.00	1.40	26.92
<b>European Union</b>	1.12	1.03	1.09	1.09	2.34	2.87	2.67	2.67	2.61	2.95	2.90	2.90	0.00	0.00	-0.05	-1.59
<b>Southeast Asia</b>																
Indonesia	0.33	0.32	0.31	0.31	1.18	1.17	1.16	1.16	0.39	0.38	0.36	0.36	0.00	0.00	-0.02	-4.00
Vietnam	0.03	0.03	0.03	0.03	1.60	1.61	1.62	1.62	0.05	0.05	0.04	0.04	0.00	0.00	0.00	-6.67
Thailand	0.03	0.03	0.03	0.03	1.63	1.63	1.63	1.63	0.05	0.05	0.05	0.05	0.00	0.00	0.00	0.00
Burma	0.13	0.12	0.12	0.12	1.04	1.04	1.04	1.04	0.13	0.13	0.12	0.12	0.00	0.00	-0.01	-4.00
<b>Serbia</b>	0.24	0.24	0.24	0.24	1.70	2.77	2.00	2.00	0.40	0.65	0.47	0.47	0.00	0.00	-0.18	-27.69
<b>Mexico</b>	0.12	0.09	0.10	0.13	1.52	2.06	1.55	1.68	0.18	0.19	0.16	0.21	0.06	35.48	0.03	13.51
<b>Africa</b>																
South Africa	1.15	1.15	1.20	1.16	2.41	1.59	2.33	2.42	2.77	1.83	2.80	2.80	0.00	0.00	0.97	53.01
Nigeria	1.20	1.15	1.35	1.35	0.98	1.00	0.96	0.96	1.18	1.15	1.30	1.30	0.00	0.00	0.15	13.04
Zambia	0.38	0.38	0.38	0.38	1.27	1.27	1.27	1.27	0.48	0.48	0.48	0.48	0.00	0.00	0.00	0.00
Uganda	0.22	0.24	0.17	0.25	0.80	0.81	1.18	0.82	0.17	0.19	0.20	0.20	0.00	0.00	0.01	3.09
<b>Middle East</b>																
Iran	0.08	0.07	0.07	0.07	2.27	2.36	2.43	2.43	0.17	0.17	0.17	0.17	0.00	0.00	0.01	3.03
Turkey	0.04	0.03	0.04	0.04	4.14	4.12	4.29	4.29	0.15	0.14	0.15	0.15	0.00	0.00	0.01	7.14
<b>Others</b>	1.03	1.13	1.16	1.12	1.67	1.59	1.59	1.58	1.72	1.80	1.84	1.77	-0.07	-3.75	-0.03	-1.45

World and Selected Countries and Regions



**Table 12 Cottonseed Area, Yield, and Production**

Country / Region	Area (Million hectares)				Yield (Metric tons per hectare)				Production (Million metric tons)				Change in Production			
	Prel.		2024/25 Proj.		Prel.		2024/25 Proj.		Prel.		2024/25 Proj.		From last month		From last year	
	2022/23	2023/24	Oct	Nov	2022/23	2023/24	Oct	Nov	2022/23	2023/24	Oct	Nov	MMT	Percent	MMT	Percent
<b>World</b>	31.12	30.55	30.51	30.43	1.36	1.35	1.39	1.38	42.31	41.33	42.30	42.10	-0.20	-0.46	0.77	1.86
<b>United States</b>	2.95	2.61	3.49	3.49	1.36	1.27	1.13	1.13	4.01	3.31	3.94	3.93	-0.01	-0.13	0.63	18.97
<b>Total Foreign</b>	28.17	27.94	27.02	26.93	1.36	1.36	1.42	1.42	38.31	38.03	38.36	38.17	-0.19	-0.50	0.14	0.38
<b>South Asia</b>																
India	12.93	12.68	11.80	11.80	0.86	0.85	0.86	0.86	11.17	10.78	10.19	10.19	0.00	0.00	-0.59	-5.51
Pakistan	1.80	2.40	2.00	2.00	0.94	1.26	1.23	1.19	1.69	3.03	2.47	2.38	-0.09	-3.48	-0.65	-21.41
<b>China</b>	3.10	2.85	2.85	2.85	3.89	3.76	3.88	3.88	12.05	10.72	11.05	11.05	0.00	0.00	0.33	3.11
<b>Former Soviet Union - 12</b>																
Uzbekistan	1.05	1.03	1.00	1.00	1.19	1.10	1.18	1.18	1.25	1.14	1.18	1.18	0.00	0.00	0.04	3.43
Turkmenistan	0.50	0.50	0.55	0.50	0.63	0.63	0.64	0.63	0.31	0.31	0.35	0.31	-0.04	-11.08	0.00	0.00
Tajikistan	0.17	0.19	0.18	0.18	1.11	1.16	1.08	1.08	0.19	0.22	0.20	0.20	0.00	0.00	-0.03	-11.76
Kazakhstan	0.13	0.12	0.12	0.12	0.87	1.00	0.98	0.98	0.11	0.12	0.12	0.12	0.00	0.00	0.00	0.00
<b>South America</b>																
Brazil	1.60	1.66	1.94	1.94	2.43	2.91	2.88	2.88	3.89	4.84	5.58	5.58	0.00	0.00	0.74	15.32
Argentina	0.51	0.62	0.55	0.55	0.84	0.98	1.09	1.09	0.43	0.61	0.60	0.60	0.00	0.00	-0.01	-1.48
<b>Middle East</b>																
Turkey	0.56	0.44	0.49	0.49	2.88	2.38	2.69	2.69	1.60	1.05	1.31	1.31	0.00	0.00	0.26	24.98
Syria	0.03	0.03	0.03	0.03	2.23	2.23	2.23	2.23	0.07	0.07	0.07	0.07	0.00	0.00	0.00	0.00
Iran	0.12	0.10	0.10	0.10	1.52	1.18	1.35	1.35	0.18	0.12	0.14	0.14	0.00	0.00	0.02	14.41
<b>Australia</b>	0.65	0.51	0.55	0.55	2.24	2.48	2.28	2.28	1.45	1.25	1.25	1.25	0.00	0.00	0.00	0.00
<b>European Union</b>	0.31	0.25	0.25	0.25	1.70	1.31	1.68	1.61	0.53	0.33	0.42	0.40	-0.02	-4.73	0.07	20.66
<b>Africa</b>																
Burkina Faso	0.62	0.46	0.47	0.47	0.35	0.46	0.42	0.42	0.21	0.21	0.20	0.20	0.00	0.00	-0.01	-5.69
Mali	0.60	0.71	0.70	0.70	0.35	0.53	0.48	0.48	0.21	0.38	0.34	0.34	0.00	0.00	-0.04	-9.60
Cameroon	0.23	0.24	0.24	0.24	1.29	1.54	1.38	1.38	0.30	0.37	0.33	0.33	0.00	0.00	-0.05	-12.16
Cote d'Ivoire	0.41	0.40	0.37	0.37	0.29	0.44	0.53	0.53	0.12	0.17	0.20	0.20	0.00	0.00	0.02	12.07
Benin	0.57	0.51	0.55	0.55	0.64	0.73	0.70	0.70	0.36	0.37	0.38	0.38	0.00	0.00	0.01	1.88
Tanzania	0.36	0.47	0.44	0.44	0.37	0.44	0.35	0.35	0.13	0.21	0.15	0.15	0.00	0.00	-0.05	-26.21
Egypt	0.14	0.10	0.13	0.13	0.92	0.96	0.93	0.99	0.13	0.10	0.12	0.13	0.01	6.61	0.03	34.38
Nigeria	0.27	0.27	0.27	0.27	0.56	0.56	0.56	0.56	0.15	0.15	0.15	0.15	0.00	0.00	0.00	0.00
Uganda	0.08	0.06	0.10	0.07	1.16	1.51	1.49	1.48	0.09	0.08	0.15	0.10	-0.05	-35.57	0.01	15.66
Zimbabwe	0.24	0.24	0.24	0.24	0.34	0.34	0.34	0.34	0.08	0.08	0.08	0.08	0.00	0.00	0.00	0.00
Sudan	0.20	0.20	0.20	0.20	1.53	1.53	1.53	1.53	0.31	0.31	0.31	0.31	0.00	0.00	0.00	0.00
<b>Mexico</b>	0.20	0.13	0.12	0.12	2.70	2.25	2.35	2.35	0.54	0.30	0.28	0.28	0.00	0.00	-0.02	-5.05
<b>Burma</b>	0.19	0.18	0.19	0.19	1.26	1.24	1.24	1.24	0.23	0.23	0.24	0.24	0.00	0.00	0.01	4.42
<b>Others</b>	0.62	0.61	0.60	0.60	0.84	0.81	0.88	0.88	0.53	0.49	0.53	0.53	0.00	0.00	0.04	7.93

World and Selected Countries and Regions

**Table 13 Peanut Area, Yield, and Production**

Country / Region	Area (Million hectares)				Yield (Metric tons per hectare)				Production (Million metric tons)				Change in Production			
	2022/23	Prel.	2024/25 Proj.		2022/23	Prel.	2024/25 Proj.		2022/23	Prel.	2024/25 Proj.		From last month		From last year	
		2023/24	Oct	Nov		2023/24	Oct	Nov		2023/24	Oct	Nov	MMT	Percent	MMT	Percent
<b>World</b>	29.04	29.60	29.36	28.95	1.70	1.67	1.75	1.74	49.44	49.52	51.31	50.37	-0.95	-1.85	0.85	1.71
<b>United States</b>	0.56	0.63	0.71	0.71	4.50	4.23	4.13	4.17	2.51	2.67	2.92	2.95	0.03	1.10	0.29	10.80
<b>Total Foreign</b>	28.48	28.97	28.65	28.24	1.65	1.62	1.69	1.68	46.93	46.85	48.39	47.41	-0.98	-2.03	0.56	1.20
<b>China</b>	4.68	4.98	4.85	4.85	3.91	3.86	3.92	3.92	18.33	19.22	19.00	19.00	0.00	0.00	-0.22	-1.13
<b>Africa</b>																
Nigeria	3.40	3.45	3.45	3.45	1.26	1.25	1.25	1.25	4.28	4.30	4.30	4.30	0.00	0.00	0.00	0.00
Sudan	3.07	3.01	2.50	2.00	0.86	0.46	0.80	0.50	2.64	1.39	2.00	1.00	-1.00	-50.00	-0.39	-27.85
Senegal	1.23	1.25	1.25	1.25	1.23	1.38	1.36	1.36	1.50	1.73	1.70	1.70	0.00	0.00	-0.03	-1.62
Cameroon	0.43	0.43	0.43	0.43	1.40	1.40	1.40	1.40	0.60	0.60	0.60	0.60	0.00	0.00	0.00	0.00
Ghana	0.37	0.37	0.35	0.35	1.65	1.62	1.57	1.57	0.61	0.60	0.55	0.55	0.00	0.00	-0.05	-8.33
Chad	0.76	0.76	0.76	0.76	1.10	1.09	1.09	1.09	0.83	0.83	0.83	0.83	0.00	0.00	0.00	0.00
Malawi	0.40	0.40	0.40	0.40	0.88	0.88	0.88	0.88	0.35	0.35	0.35	0.35	0.00	0.00	0.00	0.00
Congo (Kinshasa)	0.53	0.53	0.53	0.53	0.91	0.91	0.91	0.91	0.48	0.48	0.48	0.48	0.00	0.00	0.00	0.00
Niger	0.97	0.92	0.92	0.92	0.69	0.65	0.65	0.65	0.67	0.60	0.60	0.60	0.00	0.00	0.00	0.00
Mali	0.43	0.43	0.43	0.43	1.04	1.00	1.00	1.00	0.44	0.43	0.43	0.43	0.00	0.00	0.00	0.00
Uganda	0.46	0.44	0.35	0.44	0.50	0.50	0.57	0.50	0.23	0.22	0.20	0.22	0.02	10.00	0.00	0.00
Burkina Faso	0.63	0.64	0.64	0.64	0.89	0.90	0.90	0.90	0.56	0.58	0.58	0.58	0.00	0.00	0.00	0.00
Guinea	0.90	0.90	0.90	0.90	1.14	1.11	1.11	1.11	1.03	1.00	1.00	1.00	0.00	0.00	0.00	0.00
Egypt	0.06	0.06	0.06	0.06	3.20	3.20	3.20	3.20	0.21	0.21	0.21	0.21	0.00	0.00	0.00	0.00
Central African Republic	0.13	0.13	0.13	0.13	1.15	1.15	1.15	1.15	0.15	0.15	0.15	0.15	0.00	0.00	0.00	0.00
South Africa	0.03	0.04	0.04	0.04	2.29	1.75	2.00	2.00	0.07	0.07	0.08	0.08	0.00	0.00	0.01	14.29
Mozambique	0.38	0.38	0.38	0.38	0.34	0.34	0.34	0.34	0.13	0.13	0.13	0.13	0.00	0.00	0.00	0.00
Cote d'Ivoire	0.17	0.17	0.17	0.17	1.47	1.45	1.45	1.45	0.24	0.24	0.24	0.24	0.00	0.00	0.00	0.00
Benin	0.16	0.24	0.18	0.18	1.03	0.74	0.97	0.97	0.16	0.18	0.18	0.18	0.00	0.00	0.00	-2.23
<b>South Asia</b>																
India	4.96	5.00	5.50	5.50	1.27	1.20	1.29	1.29	6.30	6.00	7.10	7.10	0.00	0.00	1.10	18.33
Pakistan	0.13	0.13	0.13	0.13	0.88	0.88	0.88	0.88	0.12	0.12	0.12	0.12	0.00	0.00	0.00	0.00
<b>Southeast Asia</b>																
Indonesia	0.54	0.52	0.50	0.50	1.72	1.69	1.68	1.68	0.93	0.88	0.84	0.84	0.00	0.00	-0.04	-4.55
Burma	1.07	1.07	1.08	1.08	1.55	1.59	1.63	1.63	1.65	1.70	1.75	1.75	0.00	0.00	0.05	2.94
Vietnam	0.15	0.15	0.14	0.14	2.63	2.62	2.64	2.64	0.40	0.38	0.37	0.37	0.00	0.00	-0.01	-3.39
Thailand	0.02	0.02	0.02	0.02	1.67	1.67	1.67	1.67	0.04	0.04	0.04	0.04	0.00	0.00	0.00	0.00
<b>South America</b>																
Argentina	0.37	0.43	0.40	0.40	2.59	3.43	3.38	3.38	0.96	1.48	1.35	1.35	0.00	0.00	-0.13	-8.97
Brazil	0.20	0.26	0.26	0.26	3.95	2.88	3.46	3.46	0.79	0.73	0.90	0.90	0.00	0.00	0.17	22.62
<b>Mexico</b>	0.05	0.05	0.05	0.05	1.76	1.74	1.70	1.70	0.09	0.08	0.09	0.09	0.00	0.00	0.01	6.25
<b>Others</b>	1.80	1.81	1.85	1.85	1.18	1.19	1.21	1.21	2.13	2.15	2.25	2.25	0.00	0.00	0.10	4.70

**Table 14 Sunflowerseed Area, Yield, and Production**

Country / Region	Area (Million hectares)				Yield (Metric tons per hectare)				Production (Million metric tons)				Change in Production						
	2022/23	Prel.		2024/25 Proj.		2022/23	Prel.		2024/25 Proj.		2022/23	Prel.		2024/25 Proj.		From last month		From last year	
		2023/24	Oct	Nov	2023/24		Oct	Nov	2023/24	Oct		Nov	MMT	Percent	MMT	Percent			
<b>World</b>	28.30	27.94	27.83	27.79	1.87	2.01	1.82	1.82	52.78	56.03	50.69	50.44	-0.25	-0.48	-5.59	-9.97			
<b>United States</b>	0.65	0.51	0.28	0.28	1.97	2.00	2.12	2.12	1.27	1.02	0.59	0.59	0.00	0.00	-0.43	-42.19			
<b>Total Foreign</b>	27.65	27.43	27.55	27.51	1.86	2.01	1.82	1.81	51.51	55.01	50.10	49.85	-0.25	-0.49	-5.16	-9.37			
<b>Former Soviet Union - 12</b>																			
Russia	9.11	9.30	9.30	9.30	1.78	1.84	1.72	1.72	16.25	17.10	16.00	16.00	0.00	0.00	-1.10	-6.43			
Ukraine	5.70	6.40	6.20	6.20	2.14	2.42	2.02	2.02	12.20	15.50	12.50	12.50	0.00	0.00	-3.00	-19.35			
Kazakhstan	1.09	1.13	1.25	1.25	1.20	1.10	1.12	1.12	1.30	1.24	1.40	1.40	0.00	0.00	0.16	13.27			
<b>European Union</b>	4.97	4.80	4.95	4.91	1.89	2.11	1.92	1.92	9.39	10.13	9.50	9.43	-0.07	-0.74	-0.70	-6.86			
<b>South America</b>																			
Argentina	2.45	1.84	1.95	1.95	2.05	2.11	2.05	2.05	5.02	3.90	4.00	4.00	0.00	0.00	0.11	2.70			
Uruguay	0.01	0.01	0.01	0.01	0.91	0.92	1.00	1.00	0.01	0.01	0.01	0.01	0.00	0.00	0.00	-9.09			
Bolivia	0.23	0.24	0.25	0.25	1.39	1.38	1.36	1.36	0.32	0.33	0.34	0.34	0.00	0.00	0.01	3.03			
Brazil	0.06	0.06	0.06	0.06	1.52	1.18	1.50	1.50	0.09	0.07	0.09	0.09	0.00	0.00	0.02	26.76			
Paraguay	0.03	0.02	0.03	0.03	1.64	1.63	1.60	1.60	0.04	0.04	0.04	0.04	0.00	0.00	0.00	2.56			
<b>China</b>	0.62	0.70	0.60	0.60	2.79	2.83	2.92	2.92	1.74	1.98	1.75	1.75	0.00	0.00	-0.23	-11.75			
<b>South Asia</b>																			
India	0.36	0.15	0.18	0.18	0.59	0.75	0.63	0.63	0.22	0.11	0.11	0.11	0.00	0.00	0.00	0.89			
Pakistan	0.07	0.08	0.08	0.08	1.72	1.35	1.31	1.31	0.12	0.11	0.11	0.11	0.00	0.00	0.00	-2.78			
<b>Middle East</b>																			
Turkey	0.79	0.70	0.69	0.69	2.41	2.21	2.25	1.99	1.90	1.55	1.55	1.38	-0.18	-11.29	-0.18	-11.29			
Iran	0.04	0.04	0.04	0.04	1.02	1.05	1.07	1.07	0.04	0.04	0.05	0.05	0.00	0.00	0.00	4.65			
Israel	0.00	0.00	0.00	0.00	2.00	4.00	4.00	4.00	0.00	0.00	0.00	0.00	0.00	0.00	0.00	0.00			
<b>Africa</b>																			
Egypt	0.01	0.01	0.01	0.01	2.75	2.63	2.75	2.75	0.02	0.02	0.02	0.02	0.00	0.00	0.00	4.76			
Morocco	0.03	0.02	0.02	0.02	1.11	1.27	1.17	1.17	0.03	0.03	0.03	0.03	0.00	0.00	0.00	0.00			
South Africa	0.56	0.53	0.54	0.54	1.29	1.20	1.30	1.30	0.72	0.64	0.70	0.70	0.00	0.00	0.07	10.24			
<b>Burma</b>	0.60	0.60	0.60	0.60	0.65	0.65	0.65	0.65	0.39	0.39	0.39	0.39	0.00	0.00	0.00	0.00			
<b>Canada</b>	0.04	0.04	0.02	0.02	2.21	2.30	2.06	2.06	0.08	0.09	0.04	0.04	0.00	0.00	-0.06	-59.78			
<b>Australia</b>	0.03	0.03	0.02	0.02	1.48	1.28	1.50	1.50	0.04	0.03	0.03	0.03	0.00	0.00	0.00	-6.25			
<b>Others</b>	0.86	0.73	0.75	0.75	1.83	2.33	1.92	1.92	1.58	1.70	1.44	1.44	0.00	0.00	-0.26	-15.22			

World and Selected Countries and Regions

**Table 15 Rapeseed Area, Yield, and Production**

Country / Region	Area (Million hectares)				Yield (Metric tons per hectare)				Production (Million metric tons)				Change in Production			
	2022/23	Prel. 2023/24	2024/25 Proj.		2022/23	Prel. 2023/24	2024/25 Proj.		2022/23	Prel. 2023/24	2024/25 Proj.		From last month		From last year	
		Oct	Nov			Oct	Nov			Oct	Nov	MMT	Percent	MMT	Percent	
<b>World</b>	41.95	43.31	42.52	42.51	2.12	2.08	2.06	2.05	88.90	89.89	87.44	87.24	-0.20	-0.23	-2.65	-2.94
<b>United States</b>	0.88	0.94	1.11	1.11	1.98	2.01	2.03	2.03	1.74	1.90	2.25	2.25	0.00	0.00	0.36	18.73
<b>Total Foreign</b>	41.07	42.36	41.41	41.40	2.12	2.08	2.06	2.05	87.17	87.99	85.19	84.99	-0.20	-0.23	-3.00	-3.41
<b>European Union</b>	5.92	6.21	5.70	5.69	3.31	3.21	3.06	3.05	19.61	19.93	17.45	17.35	-0.10	-0.57	-2.58	-12.96
<b>United Kingdom</b>	0.37	0.39	0.28	0.28	3.73	3.11	3.13	3.13	1.36	1.22	0.88	0.88	0.00	0.00	-0.34	-28.04
<b>Switzerland</b>	0.03	0.03	0.03	0.03	3.68	3.52	3.52	3.52	0.09	0.09	0.09	0.09	0.00	0.00	0.00	0.00
<b>Canada</b>	8.60	8.86	8.80	8.80	2.19	2.17	2.27	2.27	18.85	19.19	20.00	20.00	0.00	0.00	0.81	4.21
<b>China</b>	7.25	7.79	7.40	7.40	2.14	2.10	2.14	2.14	15.53	16.32	15.80	15.80	0.00	0.00	-0.52	-3.19
<b>South Asia</b>																
India	8.85	9.25	9.30	9.30	1.27	1.25	1.30	1.30	11.20	11.60	12.10	12.10	0.00	0.00	0.50	4.31
Pakistan	0.51	0.38	0.30	0.30	1.46	1.46	1.50	1.50	0.74	0.56	0.45	0.45	0.00	0.00	-0.11	-19.21
Bangladesh	0.81	1.10	1.10	1.10	1.30	1.46	1.30	1.30	1.05	1.61	1.43	1.43	0.00	0.00	-0.18	-11.01
<b>Former Soviet Union - 12</b>																
Russia	2.27	2.05	2.60	2.60	1.89	2.05	1.96	1.92	4.30	4.20	5.10	5.00	-0.10	-1.96	0.80	19.05
Ukraine	1.23	1.60	1.35	1.35	2.85	2.97	2.67	2.67	3.50	4.75	3.60	3.60	0.00	0.00	-1.15	-24.21
Belarus	0.36	0.40	0.48	0.48	2.22	2.25	2.25	2.25	0.80	0.90	1.08	1.08	0.00	0.00	0.18	20.00
Kazakhstan	0.13	0.09	0.15	0.15	1.48	1.32	1.33	1.33	0.19	0.12	0.20	0.20	0.00	0.00	0.08	62.60
<b>Australia</b>	3.90	3.48	3.20	3.20	2.12	1.71	1.72	1.72	8.27	5.94	5.50	5.50	0.00	0.00	-0.44	-7.35
<b>South America</b>																
Chile	0.03	0.03	0.04	0.04	3.73	4.39	3.86	3.86	0.12	0.12	0.14	0.14	0.00	0.00	0.01	9.76
Paraguay	0.07	0.07	0.08	0.08	1.77	1.50	1.53	1.53	0.12	0.11	0.12	0.12	0.00	0.00	0.01	9.52
<b>Ethiopia</b>	0.03	0.03	0.03	0.03	1.80	1.80	1.80	1.80	0.05	0.05	0.05	0.05	0.00	0.00	0.00	0.00
<b>Others</b>	0.72	0.62	0.59	0.59	1.91	2.10	2.06	2.06	1.38	1.29	1.22	1.22	0.00	0.00	-0.07	-5.49

World and Selected Countries and Regions

**Table 16 Copra, Palm Kernel, and Palm Oil Production**

Country / Region	Production (Million metric tons)				Change in Production			
	2022/23	Prel.	2024/25 Proj.		From last month		From last year	
		2023/24	Oct	Nov	MMT	Percent	MMT	Percent
<b>Oilseed, Copra</b>								
Philippines	2.60	2.90	2.50	2.50	0.00	0.00	-0.40	-13.79
Indonesia	1.68	1.69	1.68	1.68	0.00	0.00	-0.01	-0.59
India	0.94	0.94	0.94	0.94	0.00	0.00	0.00	0.00
Vietnam	0.29	0.29	0.29	0.29	0.00	0.00	0.00	0.00
Papua New Guinea	0.10	0.09	0.10	0.10	0.00	0.00	0.01	11.11
Sri Lanka	0.07	0.07	0.07	0.07	0.00	0.00	0.00	0.00
Thailand	0.07	0.07	0.07	0.07	0.00	0.00	0.00	0.00
Mexico	0.05	0.05	0.05	0.05	0.00	0.00	0.00	0.00
Cote d'Ivoire	0.03	0.03	0.03	0.03	0.00	0.00	0.00	0.00
Malaysia	0.03	0.03	0.03	0.03	0.00	0.00	0.00	0.00
World	6.00	6.21	5.81	5.81	0.00	0.00	-0.40	-6.44
<b>Oilseed, Palm Kernel</b>								
Indonesia	11.70	11.44	12.09	12.09	0.00	0.00	0.65	5.68
Malaysia	4.49	4.83	4.85	4.85	0.00	0.00	0.02	0.41
Nigeria	0.90	1.10	1.10	1.10	0.00	0.00	0.00	0.00
Thailand	0.86	0.94	0.96	0.96	0.00	0.00	0.02	2.13
Colombia	0.33	0.35	0.35	0.35	0.00	0.00	0.00	0.00
Guatemala	0.18	0.18	0.19	0.19	0.00	0.00	0.00	0.00
Papua New Guinea	0.17	0.18	0.18	0.18	0.00	0.00	0.00	0.00
Brazil	0.15	0.16	0.16	0.16	0.00	0.00	0.00	0.00
Honduras	0.16	0.16	0.16	0.16	0.00	0.00	0.00	0.00
Cameroon	0.15	0.15	0.15	0.15	0.00	0.00	0.00	0.00
World	19.76	20.14	20.86	20.86	0.00	0.00	0.72	3.57
<b>Oil, Palm</b>								
Indonesia	45.00	44.00	46.50	46.50	0.00	0.00	2.50	5.68
Malaysia	18.39	19.71	19.80	19.80	0.00	0.00	0.09	0.46
Thailand	3.33	3.60	3.70	3.70	0.00	0.00	0.10	2.78
Colombia	1.80	1.90	1.95	1.95	0.00	0.00	0.05	2.63
Nigeria	1.40	1.50	1.50	1.50	0.00	0.00	0.00	0.00
Guatemala	1.01	0.89	0.99	0.99	0.00	0.00	0.10	11.24
Papua New Guinea	0.80	0.82	0.83	0.83	0.00	0.00	0.01	1.22
Cote d'Ivoire	0.60	0.60	0.60	0.60	0.00	0.00	0.00	0.00
Honduras	0.60	0.60	0.60	0.60	0.00	0.00	0.00	0.00
Brazil	0.57	0.59	0.60	0.60	0.00	0.00	0.02	3.45
World	76.56	77.28	80.18	80.18	0.00	0.00	2.90	3.75

World and Selected Countries and Regions



**Table 17 Cotton Area, Yield, and Production**

Country / Region	Area (Million hectares)				Yield (Kilograms per hectare)				Production (Million 480 lb. bales)				Change in Production			
	Prel.		2024/25 Proj.		Prel.		2024/25 Proj.		Prel.		2024/25 Proj.		From last month		From last year	
	2022/23	2023/24	Oct	Nov	2022/23	2023/24	Oct	Nov	2022/23	2023/24	Oct	Nov	MBales	Percent	MBales	Percent
<b>World</b>	31.59	31.19	31.16	31.02	801	789	815	815	116.18	113.03	116.64	116.18	-0.46	-0.39	3.15	2.79
<b>United States</b>	2.95	2.61	3.49	3.49	1,068	1,008	885	884	14.47	12.07	14.20	14.19	-0.01	-0.07	2.13	17.61
<b>Total Foreign</b>	28.64	28.59	27.67	27.53	773	769	806	807	101.71	100.96	102.44	101.99	-0.45	-0.44	1.02	1.01
<b>South Asia</b>																
India	12.93	12.68	11.80	11.80	443	436	443	443	26.30	25.40	24.00	24.00	0.00	0.00	-1.40	-5.51
Pakistan	1.80	2.40	2.00	2.00	472	635	621	599	3.90	7.00	5.70	5.50	-0.20	-3.51	-1.50	-21.43
<b>China</b>	3.10	2.85	2.85	2.85	2,160	2,089	2,154	2,154	30.75	27.35	28.20	28.20	0.00	0.00	0.85	3.11
<b>South America</b>																
Brazil	1.60	1.66	1.94	1.94	1,595	1,911	1,885	1,885	11.72	14.57	16.80	16.80	0.00	0.00	2.23	15.31
Argentina	0.51	0.62	0.55	0.55	495	578	643	643	1.17	1.65	1.63	1.63	0.00	0.00	-0.03	-1.52
Paraguay	0.05	0.06	0.07	0.07	890	812	837	837	0.18	0.21	0.25	0.25	0.00	0.00	0.05	21.95
<b>Africa</b>																
Burkina Faso	0.62	0.46	0.47	0.47	273	361	334	334	0.78	0.77	0.72	0.72	0.00	0.00	-0.05	-5.88
Mali	0.60	0.71	0.70	0.70	269	407	373	373	0.74	1.33	1.20	1.20	0.00	0.00	-0.13	-9.64
Cote d'Ivoire	0.41	0.40	0.37	0.37	236	358	430	430	0.45	0.65	0.73	0.73	0.00	0.00	0.08	12.31
Benin	0.57	0.51	0.55	0.55	418	482	459	459	1.10	1.13	1.15	1.15	0.00	0.00	0.02	1.77
Egypt	0.14	0.10	0.13	0.13	661	686	670	712	0.43	0.32	0.40	0.43	0.03	6.25	0.11	34.92
Cameroon	0.23	0.24	0.24	0.24	563	671	602	602	0.60	0.74	0.65	0.65	0.00	0.00	-0.09	-12.16
Tanzania	0.36	0.47	0.44	0.44	184	220	173	173	0.31	0.47	0.35	0.35	0.00	0.00	-0.12	-25.53
Nigeria	0.27	0.27	0.27	0.27	282	282	282	282	0.35	0.35	0.35	0.35	0.00	0.00	0.00	0.00
Zimbabwe	0.24	0.24	0.24	0.24	195	195	195	195	0.22	0.22	0.22	0.22	0.00	0.00	0.00	0.00
Ethiopia	0.05	0.06	0.06	0.06	726	713	713	713	0.18	0.18	0.18	0.18	0.00	0.00	0.00	0.00
<b>Former Soviet Union - 12</b>																
Uzbekistan	1.05	1.03	1.00	1.00	663	613	653	653	3.20	2.90	3.00	3.00	0.00	0.00	0.10	3.45
Turkmenistan	0.50	0.50	0.55	0.50	348	348	356	348	0.80	0.80	0.90	0.80	-0.10	-11.11	0.00	0.00
Tajikistan	0.17	0.19	0.18	0.18	615	647	605	605	0.48	0.57	0.50	0.50	0.00	0.00	-0.07	-11.50
Kazakhstan	0.13	0.12	0.12	0.12	487	558	544	544	0.28	0.30	0.30	0.30	0.00	0.00	0.00	0.00
<b>Middle East</b>																
Turkey	0.56	0.44	0.49	0.49	1,922	1,583	1,796	1,796	4.90	3.20	4.00	4.00	0.00	0.00	0.80	25.00
Syria	0.03	0.03	0.03	0.03	1,161	1,161	1,161	1,161	0.16	0.16	0.16	0.16	0.00	0.00	0.00	0.00
Iran	0.12	0.10	0.10	0.10	977	762	871	871	0.53	0.35	0.40	0.40	0.00	0.00	0.05	14.29
<b>Australia</b>	0.65	0.51	0.55	0.55	1,943	2,156	1,979	1,979	5.80	5.00	5.00	5.00	0.00	0.00	0.00	0.00
<b>Mexico</b>	0.20	0.13	0.12	0.12	1,720	1,435	1,497	1,497	1.58	0.87	0.83	0.83	0.00	0.00	-0.05	-5.17
<b>Burma</b>	0.19	0.18	0.19	0.19	664	654	654	654	0.56	0.55	0.57	0.57	0.00	0.00	0.02	4.39
<b>Others</b>	1.58	1.65	1.68	1.59	590	523	552	558	4.27	3.95	4.26	4.09	-0.18	-4.11	0.13	3.36

World and Selected Countries and Regions

**TABLE 18**

The table below presents a record of the November projection and the final Estimate. Using world wheat production as an example, the "root mean square error" means that chances are 2 out of 3 that the current forecast will not be above or below the final estimate by more than 1.1 percent. Chances are 9 out of 10 (90% confidence level) that the difference will not exceed 1.9 percent. The average difference between the November projection and the final estimate is 5.4 million tons, ranging from 0.1 million to 18.1 million tons. The November projection has been below the estimate 32 times and above 11 times.

**RELIABILITY OF PRODUCTION PROJECTIONS 1/**

COMMODITY AND REGION	Root mean square error	90 percent confidence interval	Difference between forecast and final estimate				
			Average	Smallest	Largest	Years	
						Below final	Above final
	Percent		---Million metric tons---				
<b>WHEAT</b>							
World	1.1	1.9	5.4	0.1	18.1	32	11
U.S.	0.4	0.7	0.2	0.0	1.2	21	14
Foreign	1.3	2.2	5.4	0.0	18.2	32	11
<b>COARSE GRAINS 2/</b>							
World	1.5	2.6	13.0	0.2	47.3	32	11
U.S.	1.3	2.2	2.6	0.0	9.9	20	23
Foreign	2.1	3.6	12.8	0.2	48.8	31	12
<b>RICE (Milled)</b>							
World	2.0	3.4	5.8	0.1	16.8	36	7
U.S.	2.8	4.7	0.1	0.0	0.5	20	20
Foreign	2.0	3.5	5.8	0.2	16.9	36	7
<b>SOYBEANS</b>							
World	4.0	6.8	6.7	0.0	28.3	24	19
U.S.	2.1	3.5	1.2	0.1	4.7	19	24
Foreign	6.6	11.1	6.5	0.0	29.4	21	22
<b>COTTON</b>			---Million 480-lb. bales---				
World	3.5	5.9	2.5	0.1	9.3	25	18
U.S.	4.1	7.0	0.5	0.0	2.5	20	22
Foreign	4.0	6.8	2.4	0.1	8.9	26	17
<b>UNITED STATES</b>			-----Million bushels-----				
<i>CORN</i>	1.3	2.3	97	0	396	21	21
<i>SORGHUM</i>	5.6	9.4	15	1	53	21	22
<i>BARLEY</i>	1.5	2.6	3	0	24	21	10
<i>OATS</i>	1.1	1.8	2	0	18	8	9

1/ Marketing years 1981/82 through 2023/24 for grains, soybeans, and cotton. Final for grains, soybeans, and cotton is defined as the first November estimate following the marketing year for 1981/82 through 2022/23, and for 2023/24 the last month's estimate.

2/ Includes corn, sorghum, barley, oats, rye, millet, and mixed grain