



United States
Department of
Agriculture

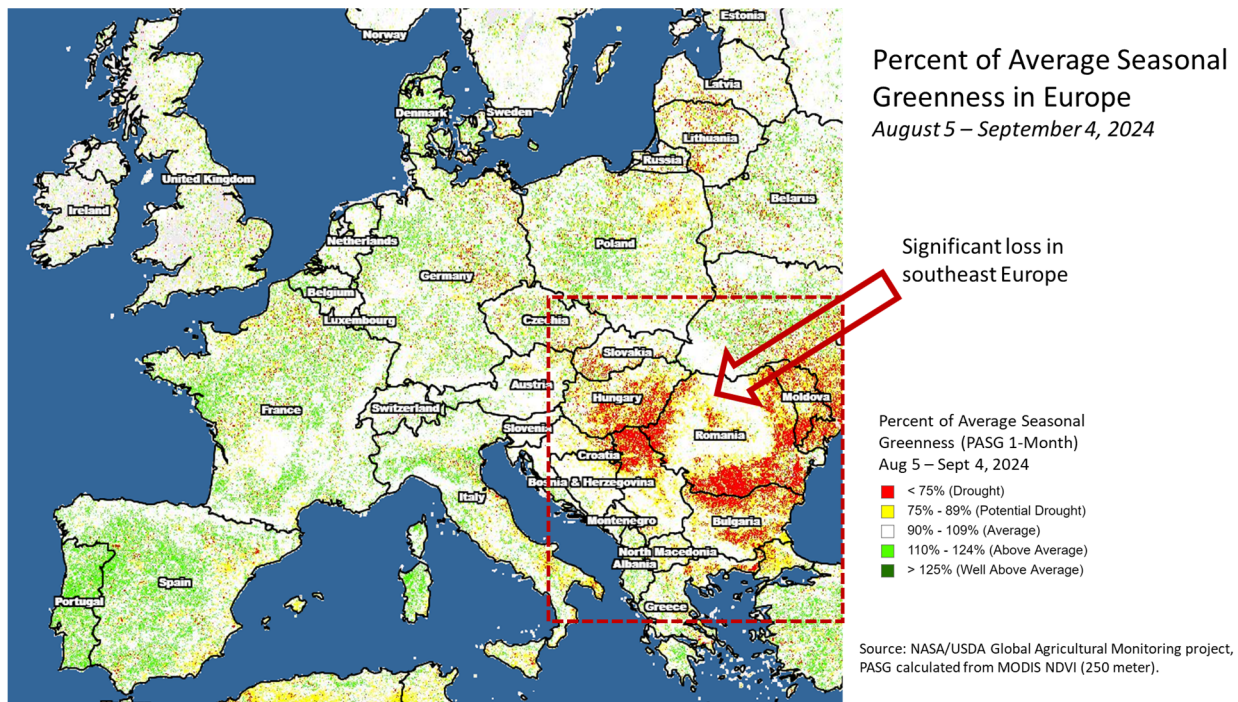
Foreign
Agricultural
Service

Circular Series
WAP 9-24
September 2024

World Agricultural Production

European Union Corn: Yield Falls Further Due to Southeast Europe Drought and Heat; Production at 59.0 MMT

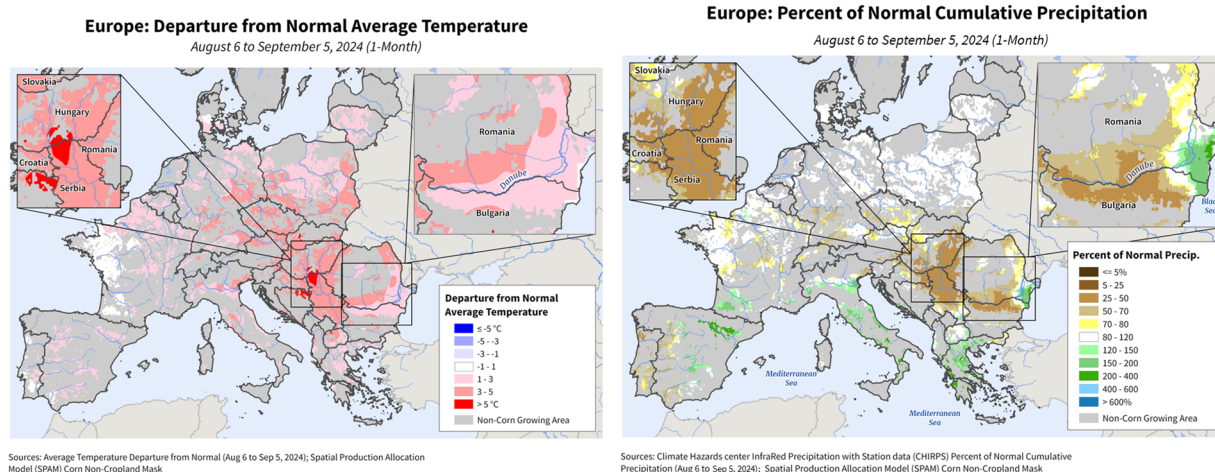
Corn production in the European Union (EU) for marketing year 2024/2025 is estimated at 59.0 million metric tons (mmt), down 1.5 mmt (2 percent) from last month, and down 2.5 mmt (4 percent) from last year, and 8 percent below the 5-year average. Harvested area is estimated at 8.6 million hectares, unchanged from last month, but 5 percent above last year and 3 percent below the 5-year average. Yield is estimated at 6.86 tons per hectare (t/ha), compared to 7.03 t/ha last month, 7.47 t/ha last year and 7.20 t/ha for the 5-year average.



Corn is the predominant summer grain in the Balkans; however, the crop requires a lot of water. Southeast Europe has limited irrigation for the demanding conditions of summer crops in the Balkans. Crops are highly susceptible to these events and have been clearly stressed as shown in the satellite-derived Percent of Average Seasonal Greenness. Irrigation in southeast Europe is minimal, making sunflowers, with their heat and drought tolerance the preferred alternative; unfortunately, sunflowers must be rotated more frequently. As the corn crop has rapidly advanced towards maturation, yield deteriorated from the low moisture and extreme heat. The drought and

Approved by the World Agricultural Outlook Board

high temperatures in southeast Europe also accelerated corn growth this season, putting the crop in the early harvest stage.



Corn in Romania is down 0.9 mmt from last month to 7.8 mmt, corn in Hungary is down 0.7 mmt to 5.2 mmt. Alternatively, corn in France is up 0.4 mmt to 14.0 mmt, the largest in the EU. France has received beneficial precipitation and has significant irrigation infrastructure to aid in crop development.

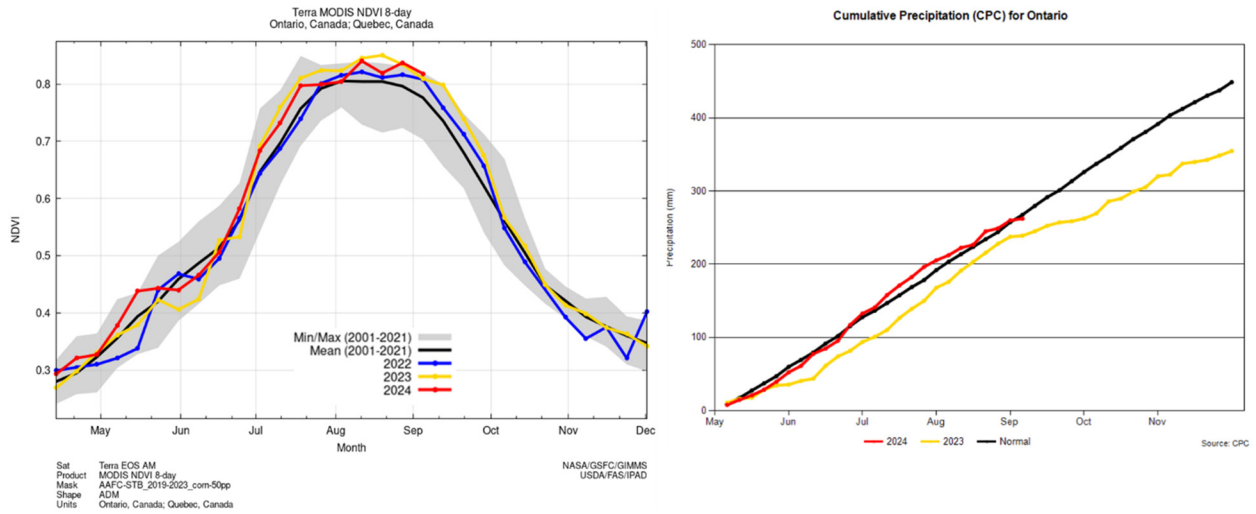
For country-specific area, yield, and production estimates within the European Union (EU), please go to PSD Online at <https://apps.fas.usda.gov/PSDOnline/app/index.html#/app/home>, and select “Downloadable Data Sets.” Select the zipped file for “EU Countries Area & Production.” (For more information, please contact Bryan.Purcell@usda.gov.)

Canada Corn: Optimal Conditions Result in a Record Yield

USDA forecasts Canada corn production for marketing year 2024/25 at 15.2 million metric tons (mmt), up 5 percent from last month, down 1 percent from last year but up 6 percent above the 5-year average. Harvested area is forecasted at 1.5 million hectares, down 5 percent from last year and slightly below the 5-year average. Yield is forecasted at a record 10.48 metric tons per hectare, up 5 percent from last month, 3 percent from last year and 7 percent above the 5-year average.

Yield has increased due to favorable weather since the start of the growing season in the main corn producing regions of Ontario and Quebec. Precipitation has been above normal during the mid growing season which supported strong crop development, and as a result, this season’s satellite-derived Normalized Difference Vegetation Index (NDVI) suggests high yield potential.

NDVI and Cumulative Rainfall Support a Record Yield Corn Crop



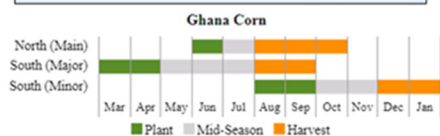
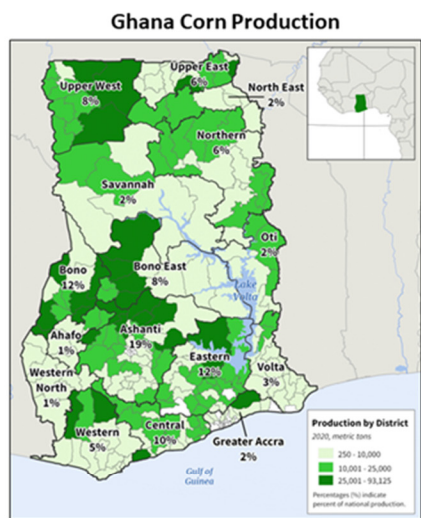
FAS/Washington and FAS/Ottawa conducted crop travel assessments during August in southern Ontario. The corn crop conditions were observed to be very good. Many farmers in southern Ontario have invested in a tiling drainage system where pipes are installed underground to drain excess sub-surface water to nearby ditches, thus creating a soil environment for optimal crop development.



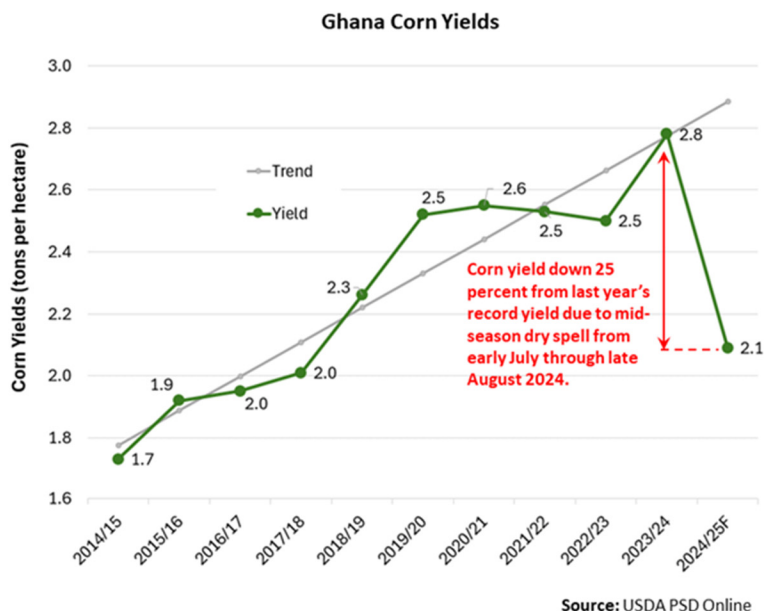
Corn is planted from late-April to May and harvest will begin in October. *(For more information, please contact Shannon.Moyo@usda.gov.)*

Ghana Corn: Production Prospects Reduced from Mid-Season Drought in the North

Ghana's marketing year 2024/25 corn production is estimated at 2.3 million metric tons, down 32 percent from last year month, down 36 percent from last year's record, and down 28 percent from the 5-year average. Harvested area is estimated at 1.1 million hectares, down 15 percent from last year, and down 11 percent from the 5-year average. Yield is estimated at 2.09 metric tons per hectare, down 25 percent from last year's record yield and down 19 percent from the 5-year average. Satellite-derived Normalized Difference Vegetation Index (NDVI) measurements over Ghana's northern croplands are the lowest cropland NDVI measurements in the past twenty years, indicating corn yields are expected to be well-below average.



Source: Ghana Ministry of Food and Agriculture (MOFA); Statistics, Research and Information Directorate (SRID).

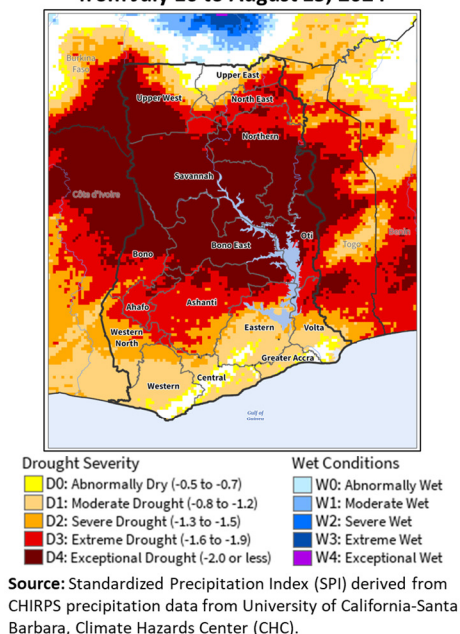


Source: USDA PSD Online

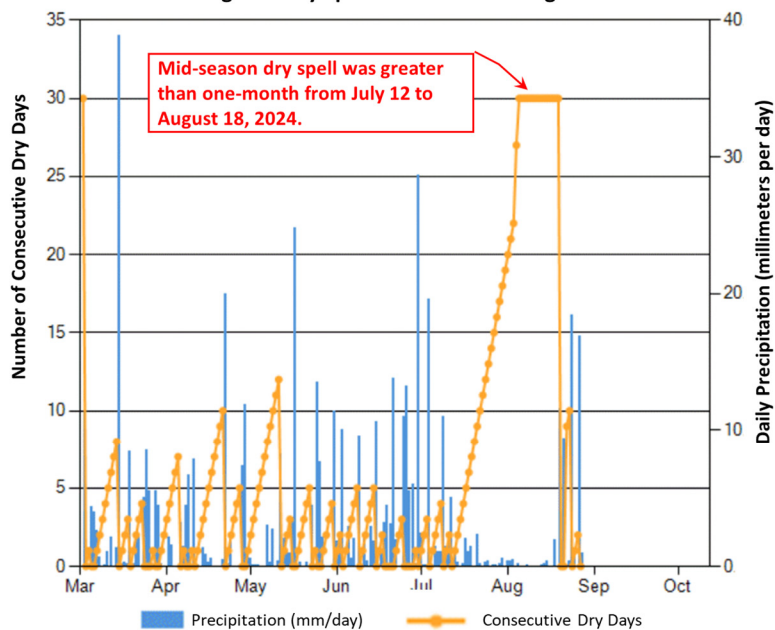
Ghana's Ministry of Food and Agriculture (MOFA) and the Ministry of Finance announced on August 26, 2024, that a severe drought has led to widespread crop failures across several regions in the middle belt and northern areas. These mid-season crop failures may endanger the livelihoods of over 928,000 farmers, as well as jeopardize the nation's food security. Preliminary crop estimates by MOFA indicate nearly 50 percent of Ghana's cropland was affected by a prolonged dry spell occurring from early July through late August.

One-month Standardized Precipitation Index (SPI) analysis from July 16 through August 15, 2024, indicates that nearly 50 percent of Ghana's cropland experienced D4 drought severity. Complete crop failure typically corresponds when one-month long dry spells occur during the critical pollination and early grain-filling stages. The most severely affected drought regions were primarily located in Ghana's middle belt and northern areas, including Bono, Bono East, Oti, Northern, North-East, Savannah, Upper East, and Upper West regions, where approximately 62 percent of the nation's corn is produced.

SPI Drought Severity for One-Month Duration from July 16 to August 15, 2024



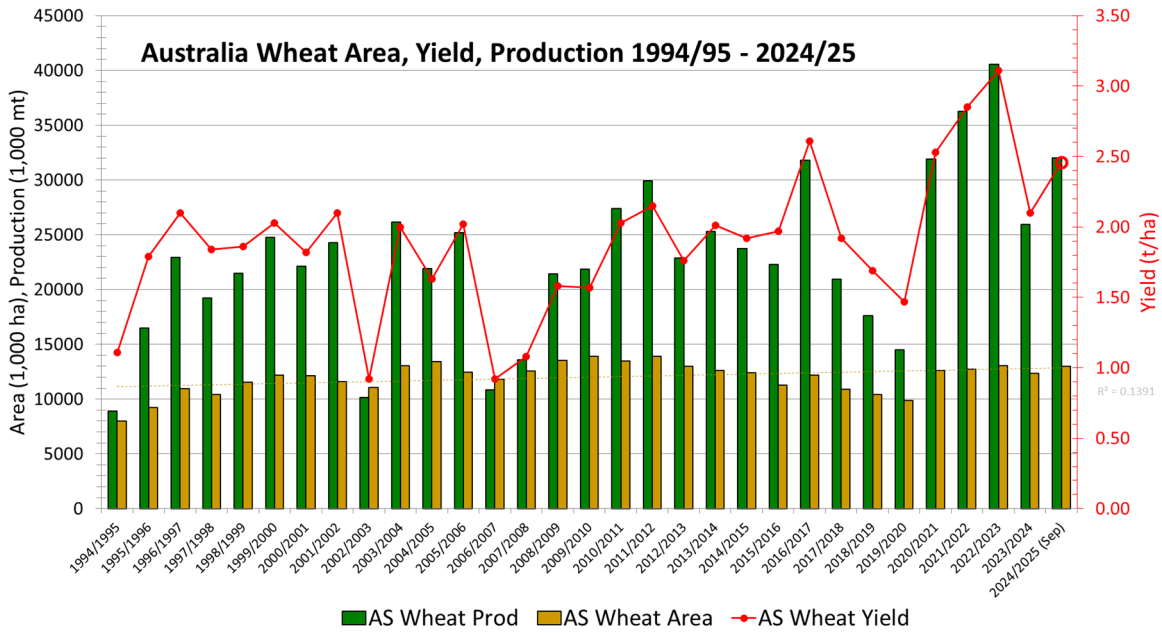
Length of Dry Spells for Bono East Region



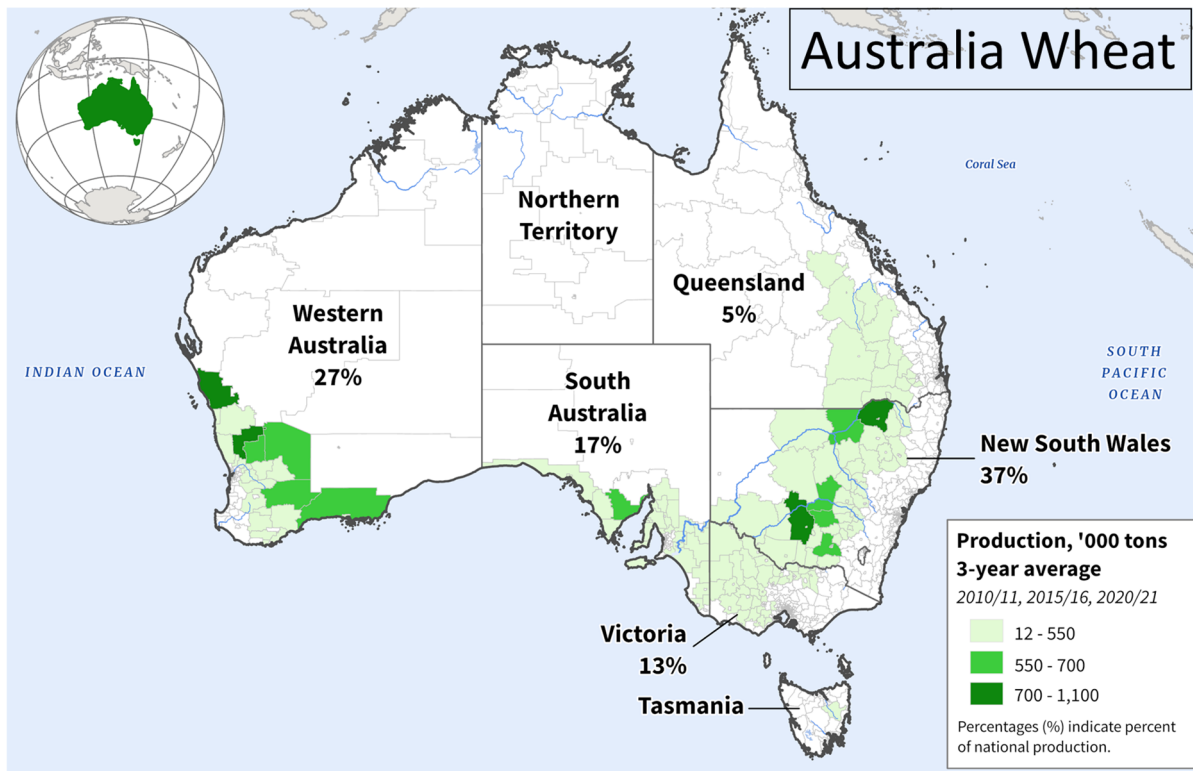
Corn is grown in all regions of Ghana. The top-five production regions during the 2020 season were, in descending order, Ashanti (19 percent of total production), Bono (12 percent), Eastern (12 percent), Central (10 percent), and Upper West (8 percent). The main corn season is located in the north with planting from May to June and harvest from August through October. *(For more information, please contact Curt.Reynolds@usda.gov.)*

Australia Wheat: Production Revised Higher; 23 Percent Above Last Year

Australia's wheat production for marketing year 2024/25 is forecast at 32.0 million metric tons, a 7 percent increase from the previous month and 23 percent above last year. Harvested area is forecast at 13.0 million hectares, a 2 percent increase from last month, and 5 percent from last year. Yield is forecast at 2.46 tons per hectare (t/ha), up 5 percent from last month, and up 17 percent from last year.

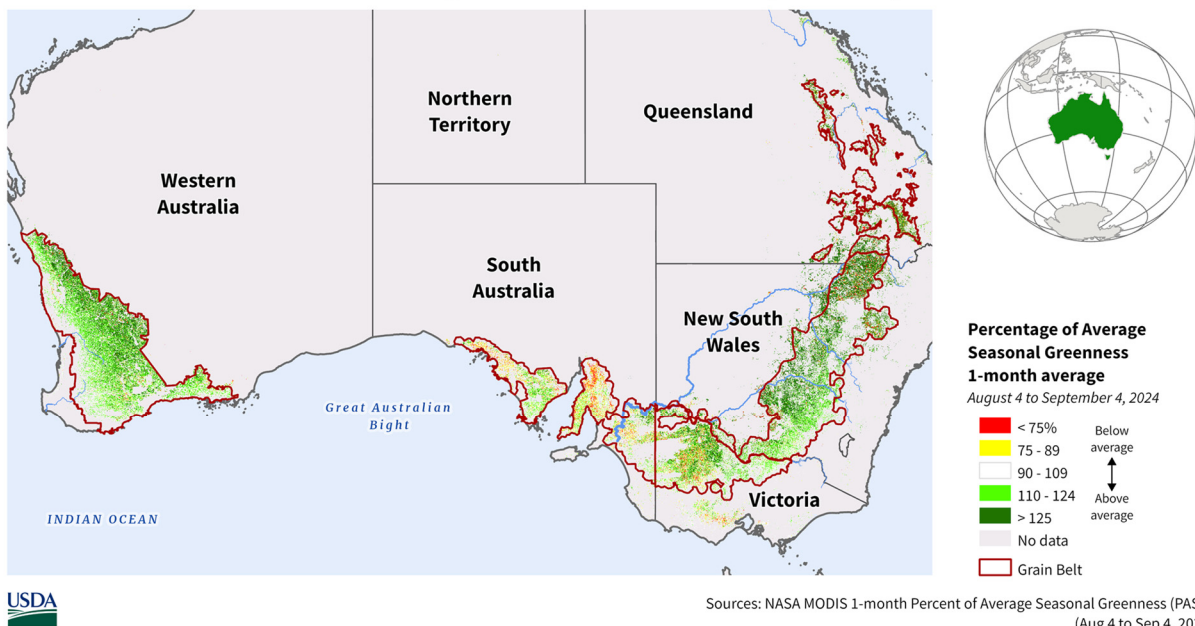


The production increase is primarily driven by two factors: improved yield potential and a higher area forecast, aligning with the latest information from the Australian Bureau of Agricultural and Resource Economics and Sciences (ABARES). Yield is forecast higher in conjunction with improved growing conditions due to recent precipitation in some wheat-producing areas. Production potentials are particularly favorable this season in New South Wales and Queensland with an increase in sown area and above average soil moisture levels leading into spring. Wheat sowing commenced in April and continued into June.



However, despite this increase, recent rainfall has not yet fully alleviated concerns, as depicted in the satellite-derived 1-month Percent of Average Seasonal Greenness (PASG). The PASG shows that crop areas in South Australia and western Victoria are still struggling this season, highlighting the need for additional rainfall to ensure optimal growth and yields. Harvest will begin in November for the main wheat growing areas and continue into January.

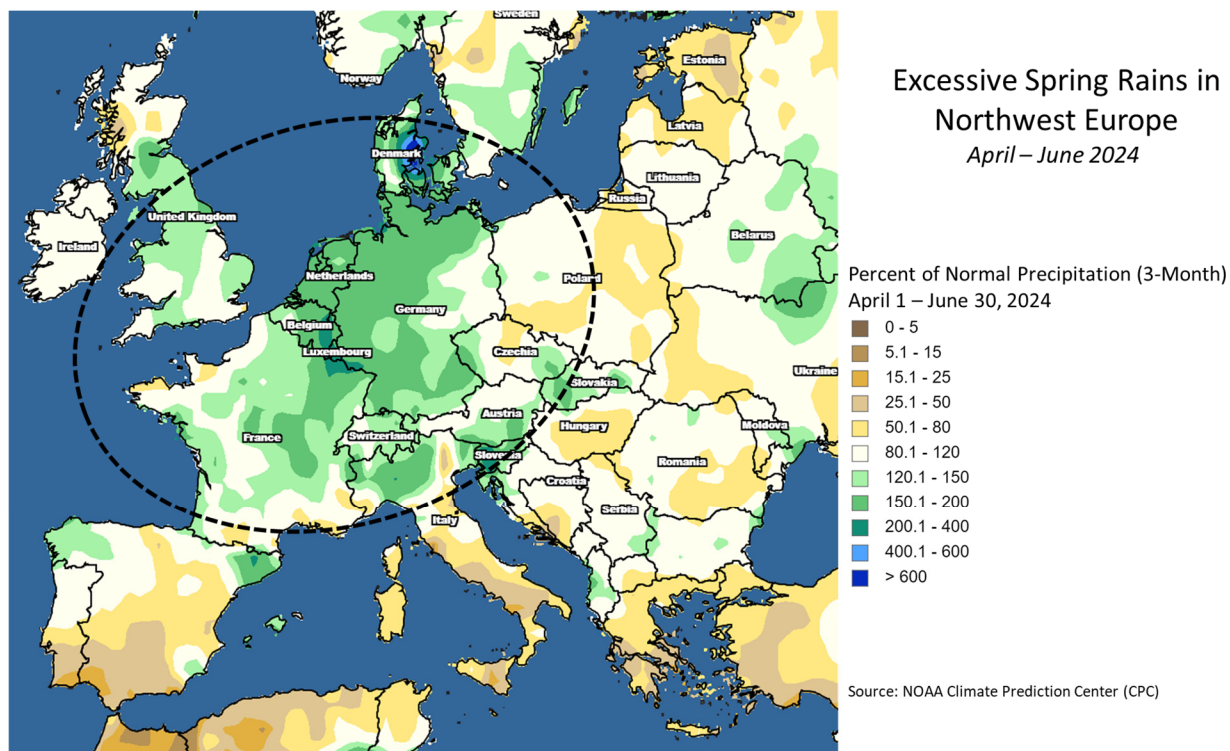
Australia: Percent of Average Seasonal Greenness (1-Month)



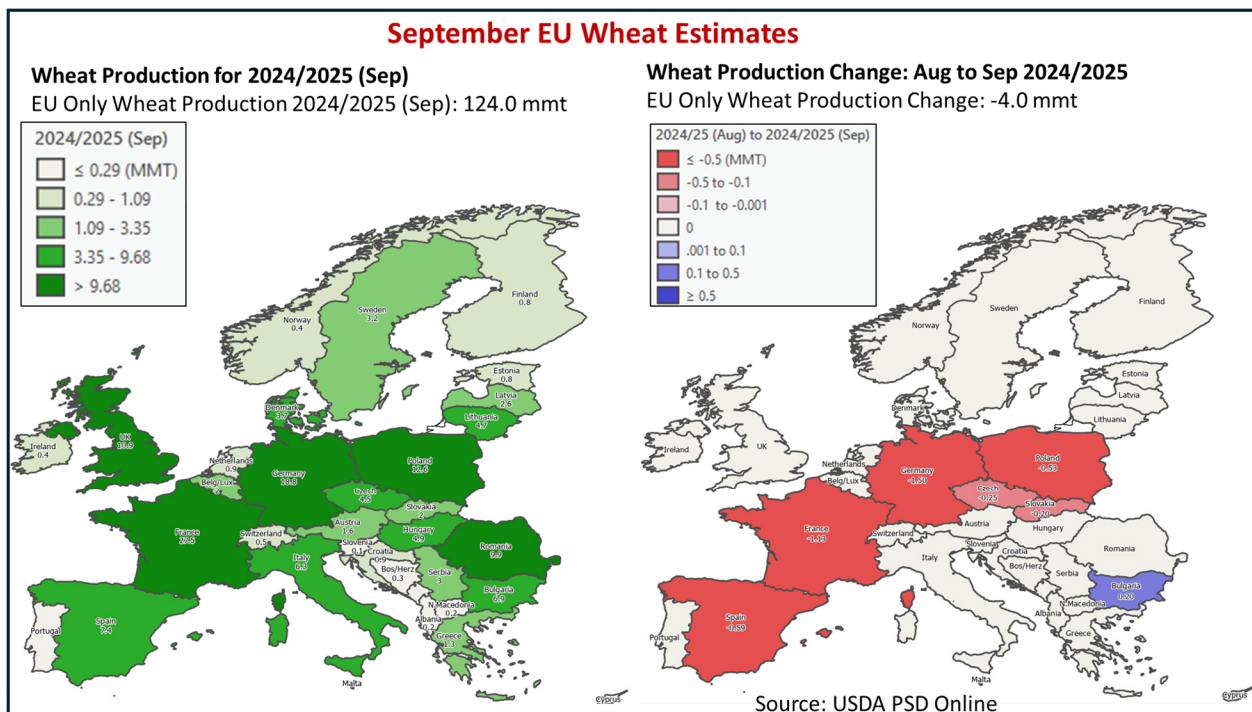
PASG is an indicator of accumulated greenness, derived from the Normalized Difference Vegetation Index (NDVI) obtained from the MODIS satellite sensor. This metric provides a measure of vegetation health and productivity over a specific time period, typically a growing season and is expressed as a percent of the historical average. A PASG value of 100 percent means that the current seasonal greenness is equal to the average historical greenness, and this is indicative of normal or average vegetation conditions. PASG compares the current season's greenness to the long-term average, offering insights into the relative health and growth of vegetation compared to historical norms. It is particularly useful for monitoring drought conditions and agricultural productivity. *(For more information, please contact James.Crutchfield@usda.gov.)*

European Union Wheat: Production Down 4.0 MMT to 124.0 MMT

Wheat production in the European Union (EU) for marketing year (MY) 2024/25 is estimated at 124.0 million metric tons (mmt), down 4.0 mmt from last month, 10.9 mmt below last year and 8 percent below the 5-year average. Harvested area is estimated at 23.0 million hectares (mha), down 0.1 mha from last month, down 1.3 mha (5 percent) from last year, and down 4 percent from the 5-year average. Yield is estimated at 5.39 tons per hectare (t/ha), below last month's 5.54 t/ha, last year's 5.55 t/ha and 4 percent below the 5-year average.



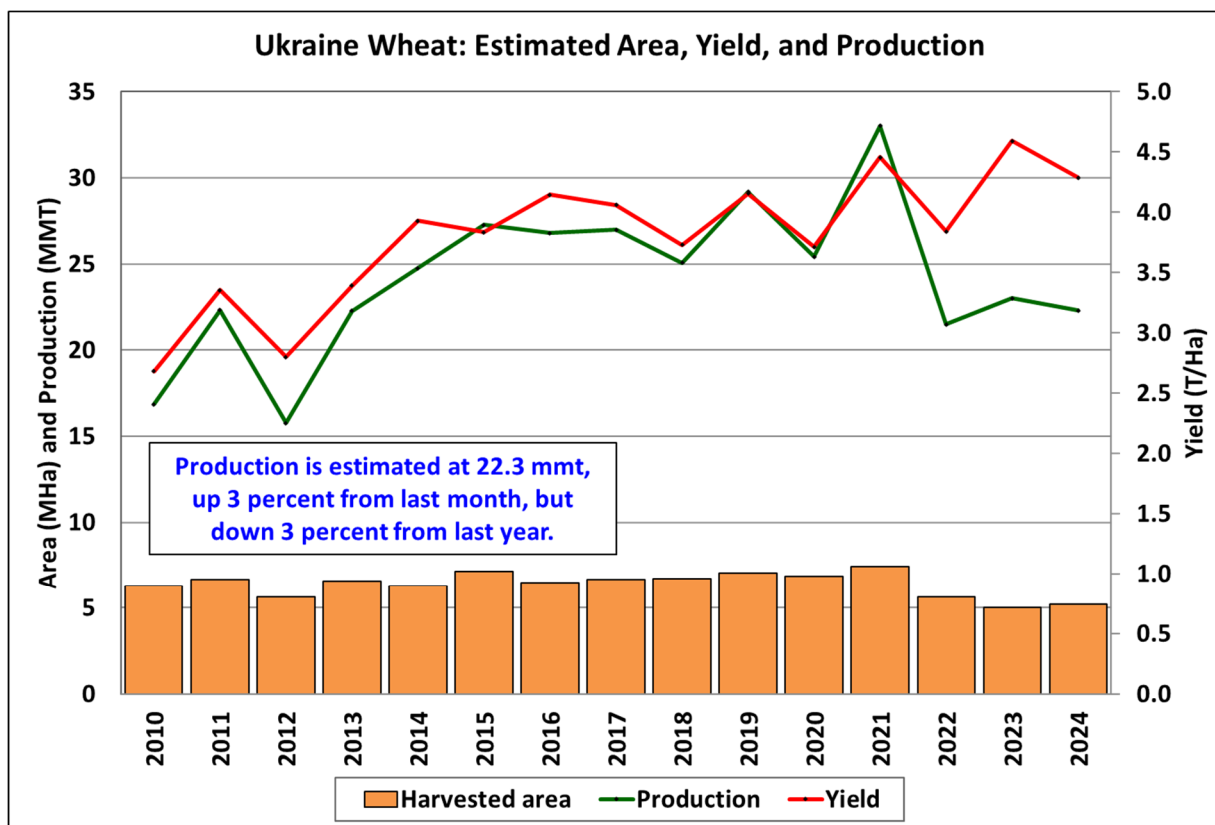
Wheat harvest is finished in the EU and results are disappointing. Wheat areas have had months of excessive rainfall that saturated fields, hampered farm work, increased diseases, prevented grain development, and delayed harvest in northwest Europe. In particular, Germany's production is estimated down 1.5 mmt this month to 18.8 mmt (with a revised 0.1 mha drop in harvested area). France, the EU's largest wheat producer has also battled excessive rainfall the entire season. France's production is lowered again, with production now at 27.5 mmt, down 1.1 mmt from last month. France's production is estimated to be lower than the similarly rain-soaked crop of MY 2016/17, and also the lowest production since MY 1987/88. France's wheat yield is estimated at 6.15 t/ha, above MY 2016/17 when it was 5.29 t/ha. Other major reductions include Spain by 0.6 mmt, Poland by 0.5 mmt, and Czechia by 0.3 mmt.



For country-specific area, yield, and production estimates within the EU, please go to PSD Online at <https://apps.fas.usda.gov/PSDOnline/app/index.html#/app/home>, and select “Downloadable Data Sets.” Select the zipped file for “EU Countries Area & Production.” (For more information, please contact Bryan.Purcell@usda.gov.)

Ukraine Wheat: Production Up Based on Official Data

Ukraine wheat production for marketing year 2024/25 is estimated at 22.3 million metric tons (mmt), up 3 percent from last month, but down 3 percent from last year. Yield is estimated at 4.29 tons per hectare (t/ha), up 3 percent from last month, but down 7 percent from last year. Harvested area is estimated at 5.2 million hectares (mha), unchanged from last month and up 4 percent from last year.



Source: USDA PSD Online

At present, Ukraine can be divided into two zones, areas in conflict and areas not in conflict. As elaborated by FAS/Kyiv in Ukraine, due to the ongoing war there is no official and reliable information about the status of Ukraine’s agriculture in the conflict zone. As a result, area and production data currently provided by FAS/Kyiv, Ukraine’s Ministry of Agriculture (MinAg), and the State Statistical Service of Ukraine, which inform USDA’s forecasts, do not reflect the whole country. For the MY 2024/25 season the MinAg operational field data for both the MY 2024/25 winter and spring crops do not cover the temporarily occupied territory of the Donetsk, Zaporizhzhia, Luhansk and Kherson regions. MinAg also does not include Crimea. USDA crop production estimates for Ukraine include estimated output from Crimea. Crimean area and production numbers are extracted from the agricultural crop reports provided by the Russian Statistical Agency, Rosstat.

The month-to-month increase in production is based on the official operational harvest data. According to MinAg, harvest was 100 percent complete as of August 29. This season, 21.8 mmt of wheat in bunker weight have been harvested from an area of 4.9 mha (excluding Crimea). Assuming normal net-to-bunker conversion of 98 percent (percent represents the 5-year pre-war average), net yield is about 4.39 t/ha excluding Crimea and 4.33 t/ha including Crimea.

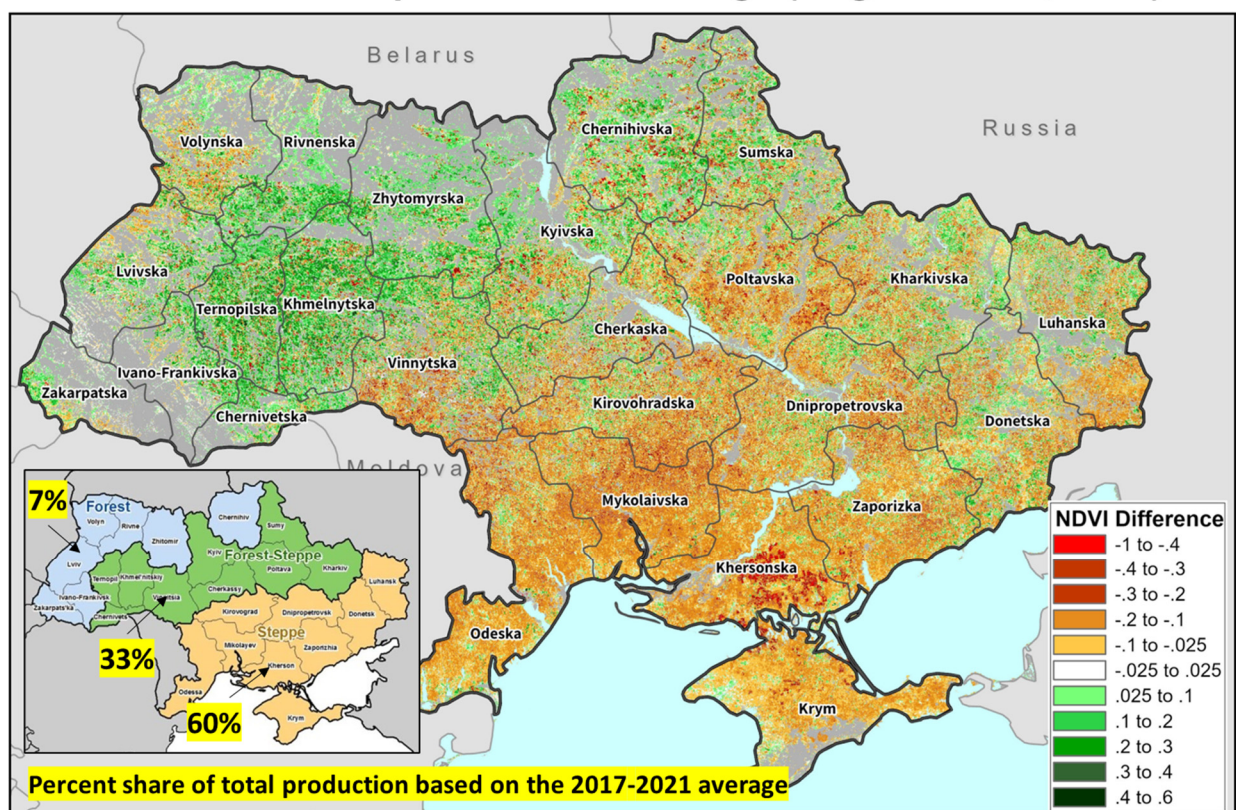
Winter wheat, which accounts for about 97 percent of the total wheat production in Ukraine, is typically planted between early September and mid-November. Harvest generally occurs from the end of June until mid-August. *(For more information, please contact Iliana.Mladenova@usda.gov.)*

Ukraine Sunflower: Further Drop in Estimated Yield Due to Poor Seasonal Growing Conditions

Ukraine sunflower production for marketing year (MY) 2024/25 is estimated at 12.5 million metric tons, down 7 percent from last month and 19 percent from last year. Yield is estimated at 2.02 tons per hectare (t/ha), down 7 percent from last month and 17 percent from last year. Harvested area is estimated at 6.2 million hectares, unchanged from last month and down 3 percent from last year.

At present, Ukraine can be divided into two zones, areas in conflict and areas not in conflict. As elaborated by FAS/Kyiv in Ukraine, due to the ongoing war there is no official and reliable information about the status of Ukraine's agriculture in the conflict zone. As a result, area and production data currently provided by FAS/Kyiv, Ukraine's Ministry of Agriculture (MinAg), and the State Statistical Service of Ukraine, which inform USDA's forecasts, do not reflect the whole country. For the MY 2024/25 season the MinAg operational field data for both the MY 2024/25 winter and spring crops do not cover the temporarily occupied territory of the Donetsk, Zaporizhzhia, Luhansk and Kherson regions. MinAg also does not include Crimea. USDA crop production estimates for Ukraine include estimated output from Crimea. Crimean area and production numbers are extracted from the agricultural crop reports provided by the Russian Statistical Agency, Rosstat.

UKRAINE: NDVI Departure from Average (August 12- 19, 2024)



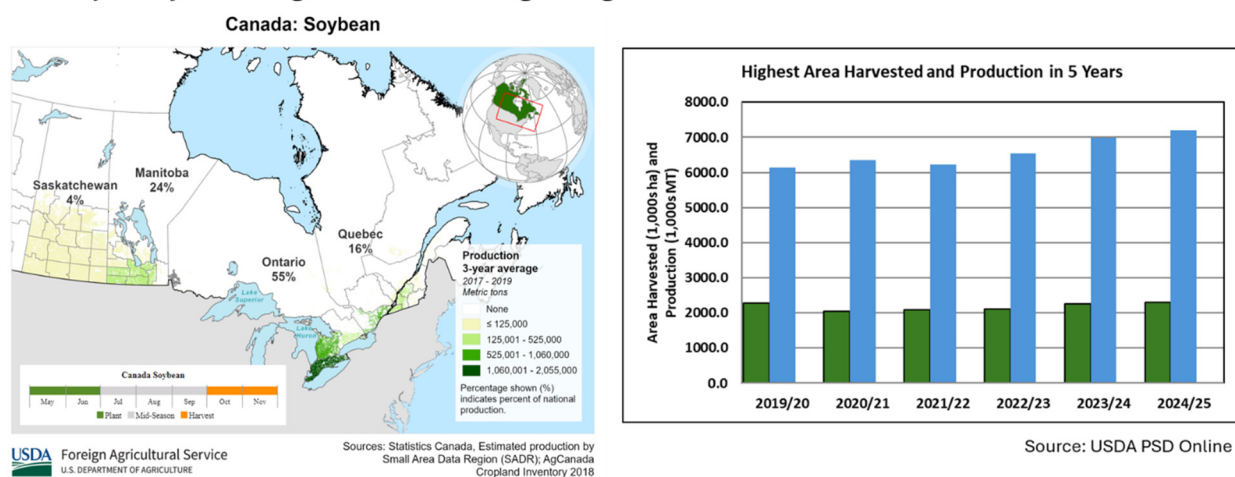
Sources: NASA GIMMS; GFSAD 30 m crop cover (2015)

This month's downward yield revision is prompted by continual unfavorable weather since the start of the season. The impact of the persistent below-average precipitation and excessive early to mid-July heat is captured by the satellite-derived Normalized Difference Vegetation Index (NDVI). NDVI reveals significantly poor vegetation vigor across most of the major sunflower producing regions. This season's harvest began earlier than normal. Based on the operational harvest data released on August 29 by the Ministry of Agriculture of Ukraine, this season's starting yield of 1.63 t/ha is from 5 percent harvested area. *(For more information, please contact Iliana.Mladenova@usda.gov.)*

Canada Soybeans: Record Yield and Highest Area and Production in 5 Years

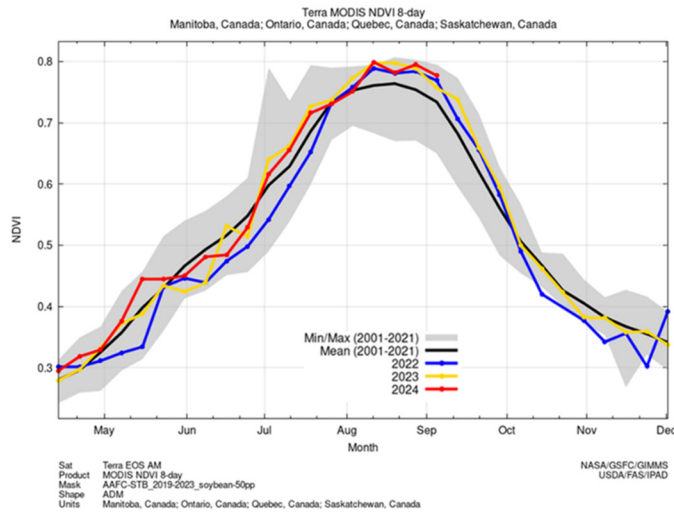
USDA forecasts Canada soybean production for marketing year (MY) 2024/25 at 7.2 million metric tons, up 4 percent from last month, 3 percent from last year and 12 percent above the 5-year average. Harvested area is forecasted at 2.3 million hectares, unchanged from last month, up 2 percent from last year and 7 percent above the 5-year average. Yield is forecasted at a record 3.13 tons per hectare, up 4 percent from last month, 1 percent from last year and 4 percent above the 5-year average.

Major Soybean Regions Contributing to Highest Area Harvested and Production in 5 Years



The satellite-derived Normalized Difference Vegetation Index (NDVI) suggests record yield potential in the major soybean growing regions in Canada. Over half of the Canadian soybean crop is grown in southern Ontario. FAS/Washington and FAS/Ottawa conducted crop travel assessments during August in southern Ontario and observed the soybean crop to be in good condition. Farmers were optimistic that with the additional precipitation that fell at the end of August, the soybean crop would get an additional boost in growth before harvest.

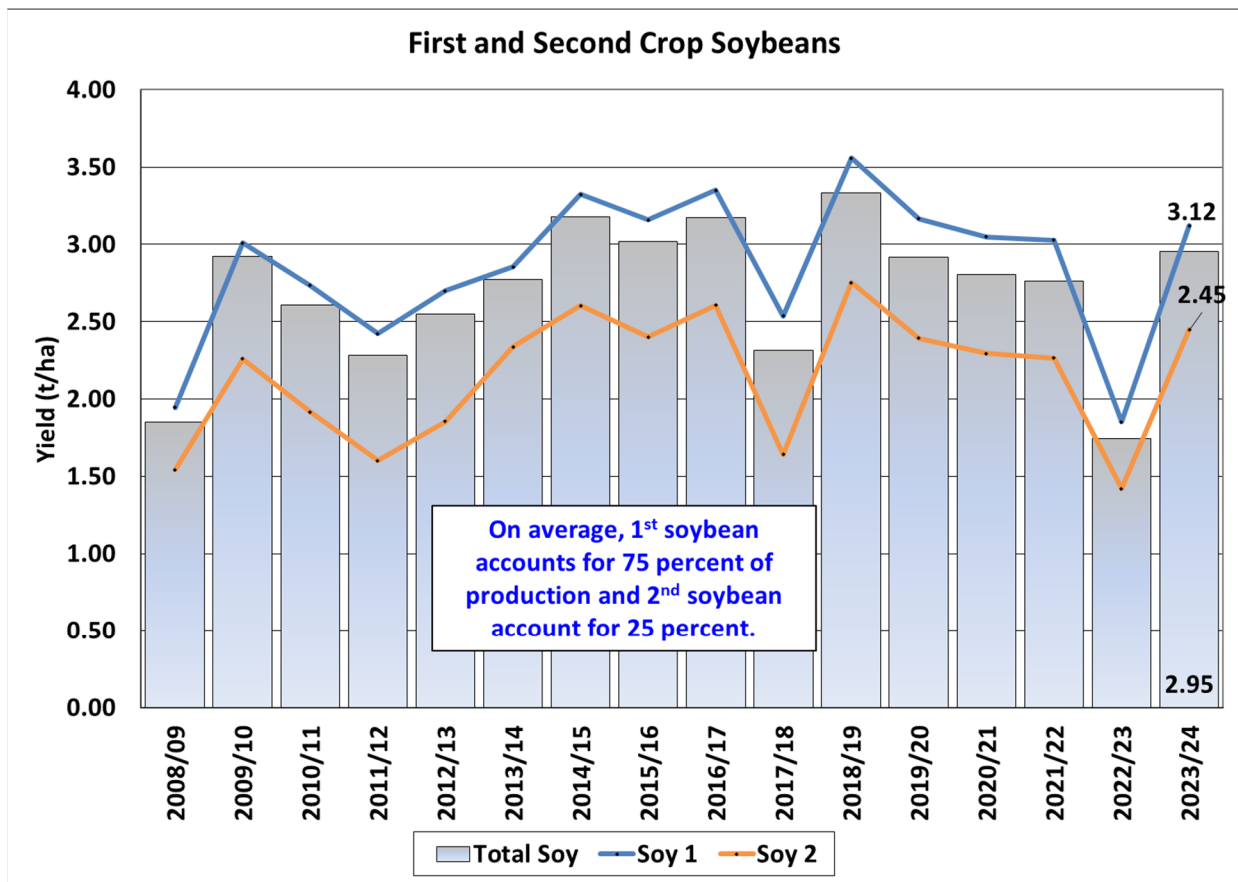
MODIS NDVI and Field Photo Supporting Record Yield for MY 2024/25



Soybeans are planted in May and June and harvest begins in October. *(For more information, please contact Shannon.Moyo@usda.gov.)*

Argentina Soybeans: Production for MY 2023/24 Down Slightly this Month but Up 92 Percent from Last Year

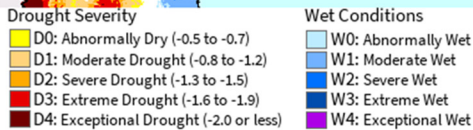
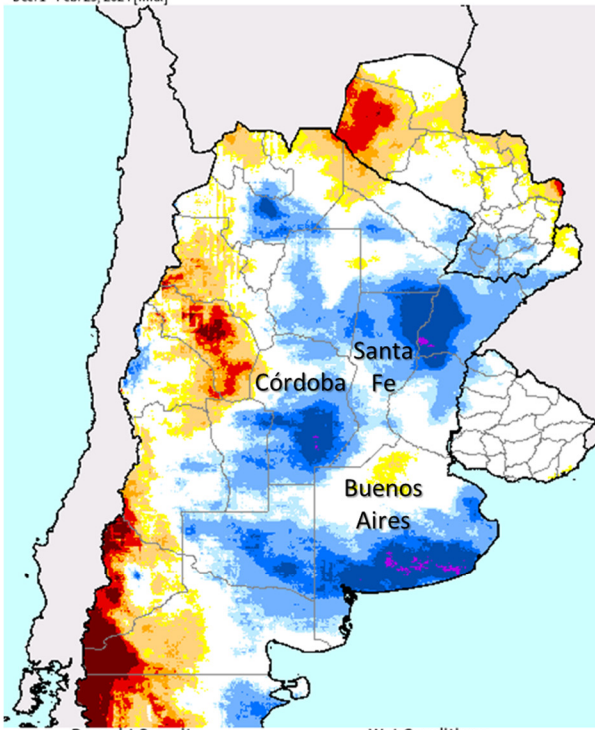
Argentina soybean production for marketing year (MY) 2023/24 is estimated at 48.1 million metric tons, down 2 percent from last month, but up 92 percent from last year. Soybean yield is estimated at 2.95 tons per hectare (t/ha), down 1 percent from last month, but up 70 percent from last year's yield. Harvested area is estimated at 16.3 million hectares, down 1 percent from last month, but up 13 percent from last year.



Source: Argentina Ministry of Agriculture

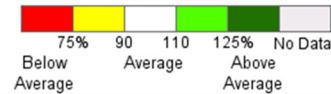
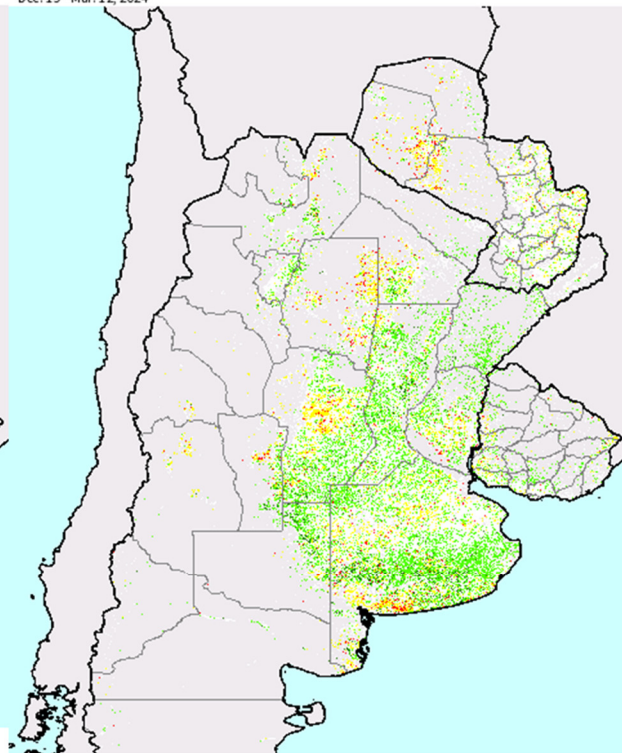
Soybeans in Argentina are divided between the first crop, which is a higher yielding crop, and the second crop, which is lower yielding and grown on fields directly after the winter crop harvest. The Argentina Ministry of Agriculture published the national average yield for first and second soybeans at 3.12 t/ha for first soybeans and 2.45 t/ha for second soybeans.

SPI 3-Month Drought Severity (CHIRPS)
Dec. 1 - Feb. 29, 2024 [final]



Source: UCSB, Climate Hazards Center

PASG from 3-Month Cropland NDVI (VIIRS)
Dec. 19 - Mar. 12, 2024



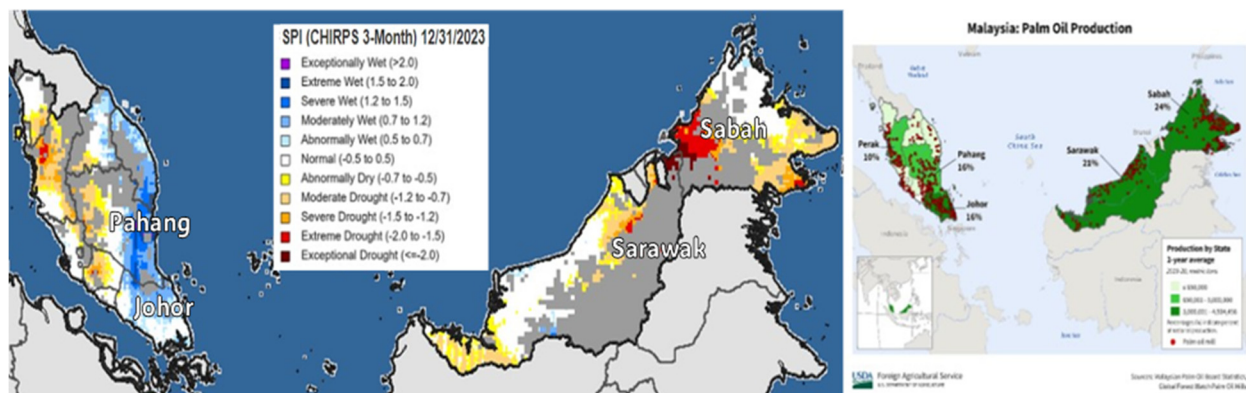
Source: NDVI VIIRS at 500-m

Due to El Niño, rainfall in the main soybean producing provinces of Córdoba, Santa Fe, and Buenos Aires, was above average and significantly above last year's low rainfall levels. The satellite-derived Percent of Average Seasonal Greenness (PASG) highlights the above average crop conditions during the main part of the growing season. Soybean harvest was complete as of early July. *(For more information, please contact Katie.McGaughey@usda.gov.)*

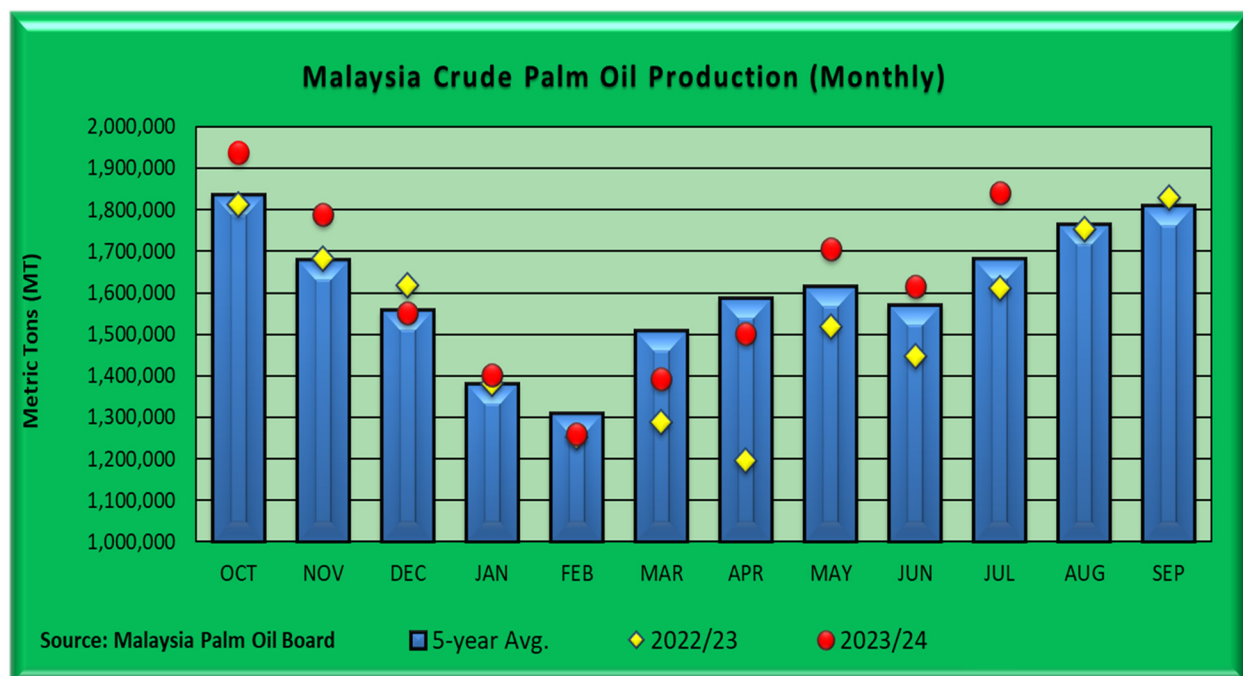
Malaysia Palm Oil: MY 2023/24 Estimated Production Higher Due to Favorable Weather Conditions

USDA estimates Malaysia palm oil production for marketing year (MY) 2023/24 at 19.7 million metric tons, up 2 percent from last month and 7 percent from last year. The harvested area estimate remains unchanged at 5.6 million hectares, but up 1 percent from last year. Yield is estimated at 3.55 tons per hectare, up 2 percent from last month and 6 percent from last year.

SPI (CHIRPS 3-Month) 10/01/2023 – 12/31/2023



Palm oil productivity is highly dependent on ample rainfall and stable temperatures. To obtain average yields, palm oil monthly water requirements are between 150 to 200 millimeters, with minimum and maximum temperatures of 22 and 33 degrees Celsius, respectively. Because of the oil palm tree’s physiology, seasonal rains have direct impacts on palm oil output 7 to 10 months after rainfall has occurred. Favorable weather in Malaysia’s main palm oil production areas since late October 2023 has benefited palm fruit yields, most notably in western Malaysia.

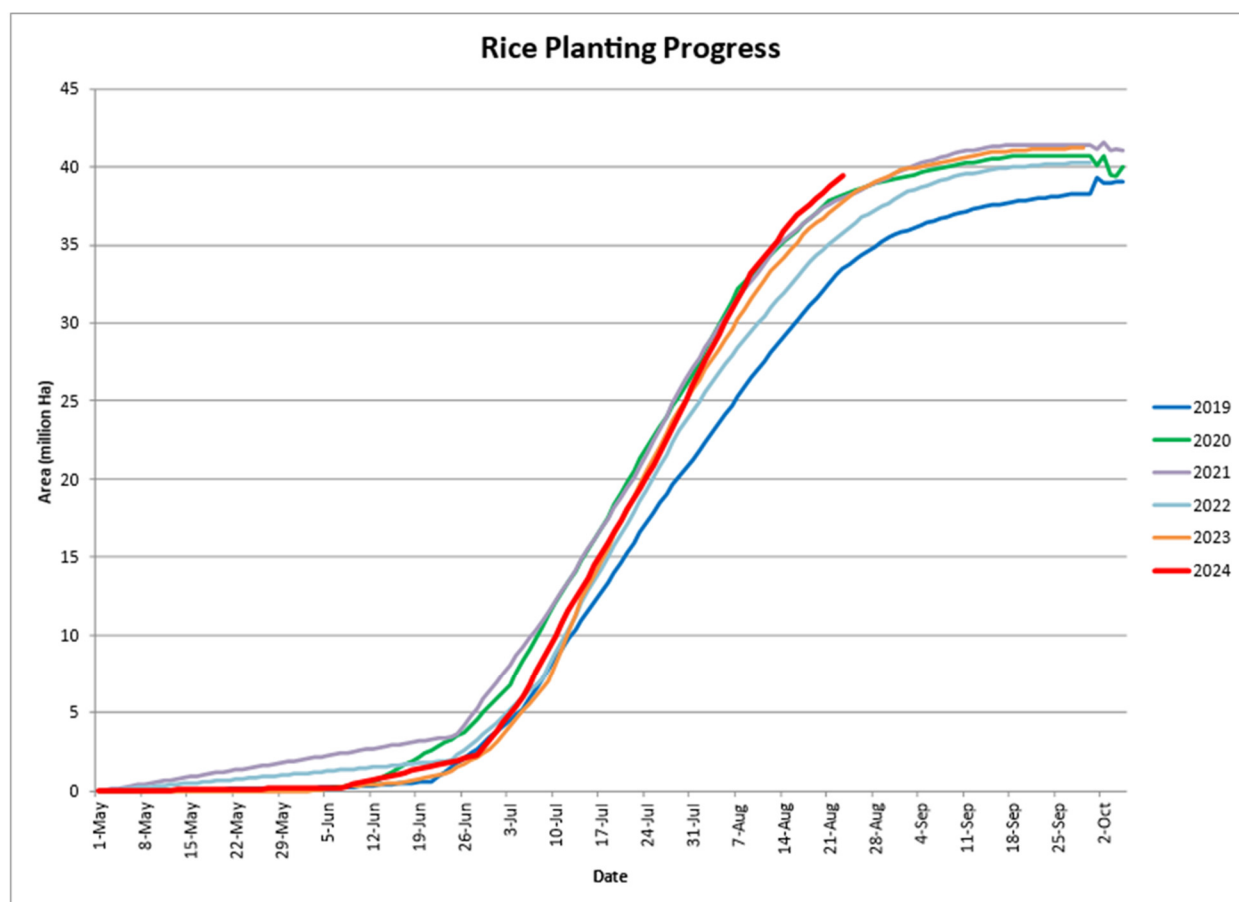


According to the Malaysia Palm Oil Board monthly report, since March 2024, palm oil monthly production has achieved higher monthly output compared to last year. Additionally, palm oil output since May has exceeded both last year and the 5-year average. With the above-average accumulation of palm oil production, Malaysia’s estimate has increased year to year. USDA’s marketing year for Malaysia palm oil is October through September. *(For more information, please contact Justin.Jenkins@usda.gov.)*

India Rice: Record Harvested Area

USDA forecasts the marketing year 2024/25 rice production for India at 139.0 million metric tons (milled basis), up marginally from last month and 1 percent from last year due to an increase in planted area. The harvested area is forecast at a record 48.5 million hectares (mha), up 1 percent from the previous month, and nearly 2 percent from last year. Yield is forecast at 4.30 tons per hectare, down slightly from last month and last year.

The Crop Situation Report Published by India's Department of Agriculture and Farmers Welfare on August 30, 2024, reported sown area at 40.8 mha, up nearly 4 percent from last year, as some farmers switched from cotton to rice. According to the report, farmers were drawn to planting rice due to the potential of higher yields, and lower input costs relative to cotton. Furthermore, improved rainfall in key producing areas encouraged an above-average pace of planting.



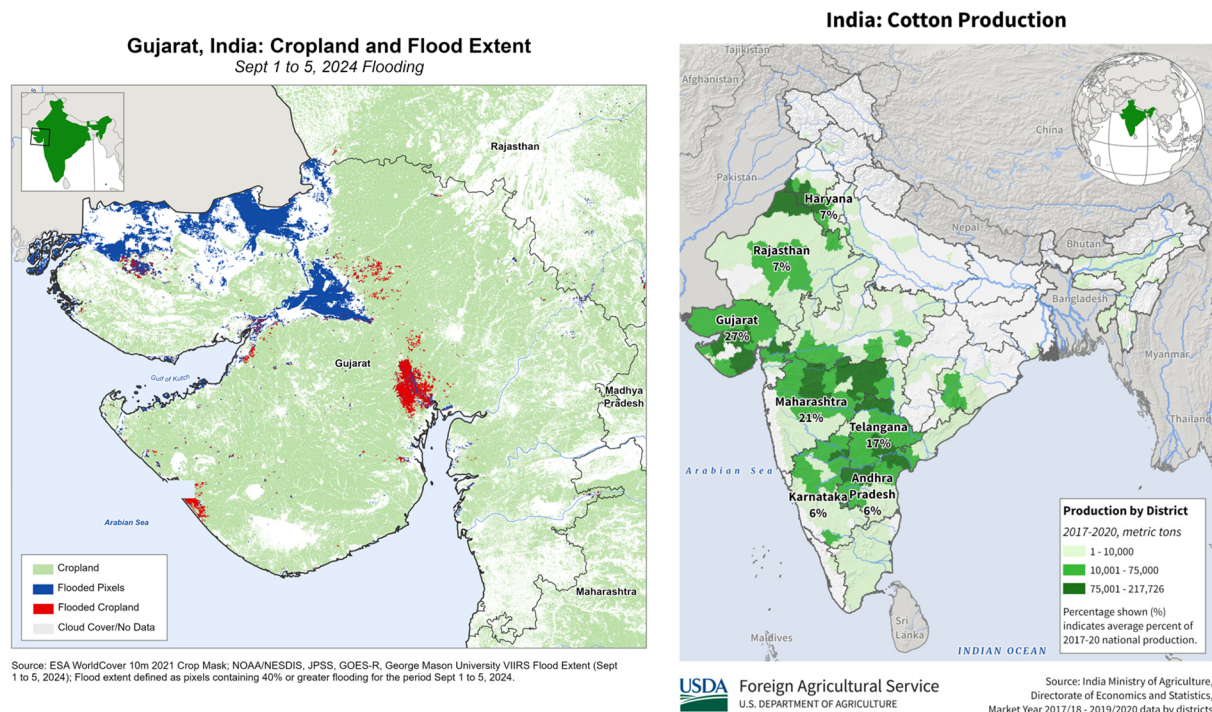
Source: India's Department of Agriculture and Farmers Welfare, <https://agriwelfare.gov.in/>

Rice is grown in three seasons in India. The *kharif* rice crop will be harvested in late October and into early November. *Rabi* rice planting, which accounts for roughly 10 percent of total rice production typically starts in late October and is harvested in April. A third *summer* rice season follows the *rabi* season and accounts for about 7 percent of total rice production. (For more information, please contact Arnella.Trent@usda.gov.)

India Cotton: Harvested Area Drops 7 Percent from Last Year

USDA estimates the marketing year (MY) 2024/25 cotton production for India at 24.0 million 480-pound bales, down 2 percent from last month and 7 percent from last year. Harvested area is estimated at 11.8 million hectares (mha), down 2 percent from last month and 7 percent from last year. Yield is estimated to reach 443 kilograms per hectare, slightly down from last month but up marginally from last year.

The drop in harvested area is primarily due to farmers switching to more profitable crops and excessive heat in the northern cotton areas. Planting is down in Gujarat, Maharashtra, and Telangana in the central cotton belt where farmers have switched to rice, soybeans and peanuts. At the beginning of the season, the northern cotton areas, which comprise around 15 percent of total production, experienced pre-monsoonal heat as high as 47 degrees Celsius, hindering sowing. Consequently, planting is estimated to be down as much as 35 percent in the north. The Crop Situation Report published by India's Department of Agriculture and Farmers Welfare on August 30, 2024, reported sown area at 11.2 mha, down 9 percent from the same period last year. Additionally, there are reports of farmers holding back MY 2023/24 cotton in anticipation of higher prices despite an increase in minimum support prices.



The central cotton belt has received substantial rainfall since late August, causing flooding in Gujarat, Telangana, and Andhra Pradesh. In Gujarat, the largest cotton producer, satellite imagery analysis indicates some flooding, however, observers in the field expect the damage to be minimal and perhaps beneficial due to the additional soil moisture provided. Since the crop was planted late, most of the crop is in the flowering to squaring stage in Gujarat.

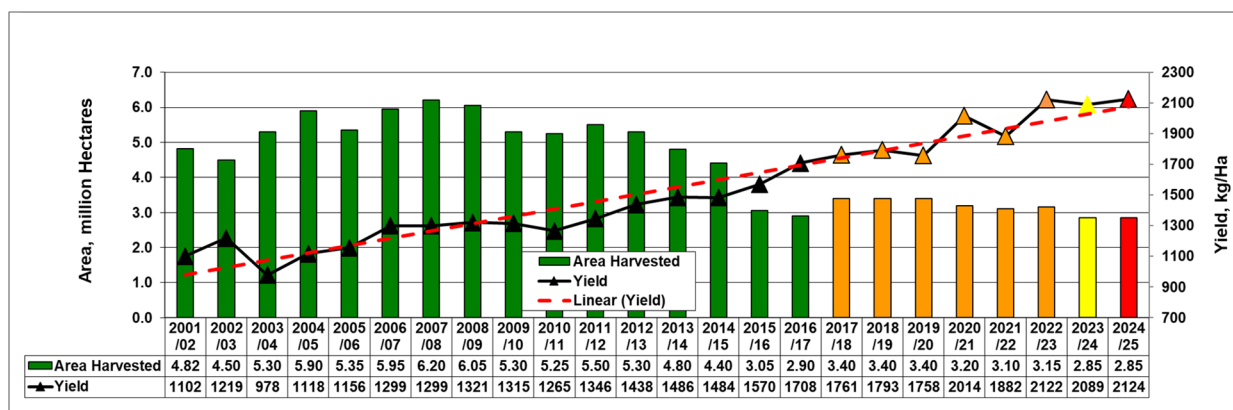
The planting window in central India began in late August. Farmers are continuing to sow in the southern areas of Telangana and Andhra Pradesh. However, planting will continue in the south

until September. Harvest activities are starting in the northern cotton belt of Rajasthan, Punjab, and Haryana. Harvest continues into January. Cotton is mainly grown in the *kharif* season. (For more information, please contact Arnella.Trent@usda.gov.)

China Cotton: Production Increased Year-on-Year Due to Prospect of Higher Yield

USDA forecasts China’s marketing year (MY) 2024/25 cotton production at 27.8 million 480-pound bales (6.05 million metric tons), up 1 percent or 300,000 million bales from last month, up 2 percent from last year, but down 1 percent from the 5-year average of 28.2 million bales. Harvested area is estimated at 2.9 million hectares (mha), unchanged from last month and last year, and down 6 percent from the 5-year average. In recent years overall cotton planted area has been on a decreasing trend due to continued area declines in the North China Plain, and in the Yangtze River basins. Yield is forecast at 2,124 kilograms per hectare (kg/ha), up 1 percent from last month, up 2 percent from last year’s yield of 2,089 kg/ha, and up 4 percent from the 5-year average of 2,034 kg/ha. Yield is significantly above the long-term trend due to the increasing quantity of cotton produced in Xinjiang province where yield is nearly double compared to elsewhere in the country. Over 90 percent of total China cotton is now produced in Xinjiang province under highly mechanized farming. According to Xinjiang Provincial Statistics Department, approximately 41 percent of cotton is produced by Xinjiang Production and Construction Engineering Corp (PCC) and 59 percent is produced by the Local Cooperative System.

China Cotton Harvested Area and Yield

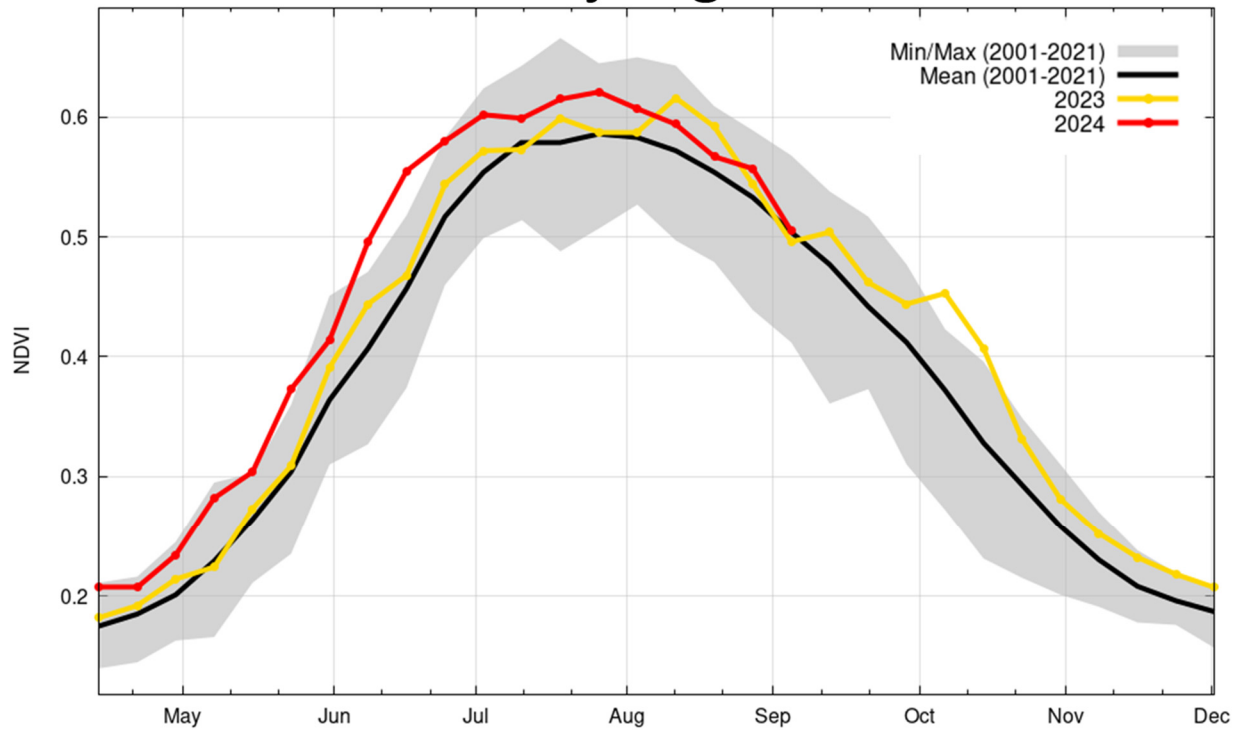


Source: USDA PSD Online

Satellite-derived Normalized Difference Vegetation Index (NDVI), show that crop conditions over the main cotton growing areas at the end of August to early-September are exceptionally favorable. This is also supported by a combination of national and regional crop condition analysis inputs from FAS/Beijing. In Xinjiang sowing was completed in May; the crop has progressed favorably well and bolls are beginning to open. The typical cotton growing season is April to October. In Xinjiang planting starts in April while on the North China Plain, and in the Yangtze River basins planting begins in late April and extends through May.

The MY 2024/25 season has been characterized by favorable weather conditions and good irrigation water availability throughout a major part of the season. In Xinjiang these conditions facilitated rapid planting, early crop establishment and development. If the conditions are sustained above-average yields are projected.

NDVI for Xinjiang Cotton Zone



Source: USDA/NASA, Global Agricultural Monitor (GLAM) MODIS Terra 8-day NDVI; European Commission JRC ASAP 2019 crop mask.

In addition to the favorable planting conditions, Xinjiang cotton farmers continue to be encouraged by the government’s maintenance of farming incentives. According to FAS/Beijing Xinjiang farmers continue to benefit from a target-price subsidy, transportation subsidies, and other farming subsidies. (For more information, please contact Dath.Mita@usda.gov.)



World Agricultural Production
U.S. Department of Agriculture

Foreign Agricultural Service / Global Market Analysis
International Production Assessment Division (IPAD)

Ag Box 1051, Room 4630, South Building
Washington, DC 20250-1051

<https://ipad.fas.usda.gov/>

Telephone: (202) 720-1662 Fax: (202) 720-1158

This report uses information from the Foreign Agricultural Service's (FAS) global network of agricultural attachés and counselors, official statistics of foreign governments and other foreign source materials, and the analysis of economic data and satellite imagery. Estimates of foreign area, yield, and production are from the International Production Assessment Division, FAS, and are reviewed by USDA's Inter-Agency Commodity Estimates Committee. Estimates of U.S. area, yield, and production are from USDA's National Agricultural Statistics Service. Numbers within the report may not add to totals because of rounding. This report reflects official USDA estimates released in the World Agricultural Supply and Demand Estimates (WASDE-584), September 12, 2024.

Printed copies are available from the National Technical Information Service. Download an order form at http://www.ntis.gov/products/specialty/usda/fas_a-g.asp, or call NTIS at 1-800-363-2068.

The FAS International Production Assessment Division prepared this report. The next issue of World Agricultural Production will be released after 12:00 p.m. Eastern Time, October 11, 2024.

Conversion Table

Metric tons to bushels

Wheat, soybeans	=	MT * 36.7437
Corn, sorghum, rye	=	MT * 39.36825
Barley	=	MT * 45.929625
Oats	=	MT * 68.894438

Metric tons to 480-lb bales

Cotton	=	MT * 4.592917
--------	---	---------------

Metric tons to hundredweight

Rice	=	MT * 22.04622
------	---	---------------

Area & weight

1 hectare	=	2.471044 acres
1 kilogram	=	2.204622 pounds



For further information, contact:
U.S. Department of Agriculture
Foreign Agricultural Service
Global Market Analysis

International Production Assessment Division
 Ag Box 1051, Room 4630, South Building
 Washington, DC 20250-1051

Telephone: (202) 720-1662

Fax: (202) 720-1158

GENERAL INFORMATION

Senior Director	Ronald Frantz	202-720-4056	ronald.frantz@usda.gov
Director	Robert Tetrault	202-720-1071	robert.tetrault@usda.gov
USDA Remote Sensing Advisor	Vacant		
Sr. Analyst/Technical Lead	Curt Reynolds, Ph.D.	202-690-0134	curt.reynolds@usda.gov
Sr. Analyst/ Satellite Imagery	Dath Mita, Ph.D.	202-720-7339	dath.mita@usda.gov
Archives Manager/Technical Lead			
Sr. Analyst/Technical Lead	Jim Crutchfield	202-690-0135	james.crutchfield@usda.gov
GIS Mapping/Imagery Analyst	Lisa Colson	202-720-6652	lisa.colson@usda.gov
WAP Coordinators	Shannon Moyo	771-221-5973	shannon.moyo@usda.gov
	Vacant		

ANALYSIS REGIONS

ANALYST

CONTACT INFORMATION

Brazil	Aaron Mulhollen	202-690-0131	aaron.mulhollen@usda.gov
South America (except Brazil)	Katie McGaughey	202-720-9210	katie.mcgaughey@usda.gov
Europe, North Africa, and Middle East	Bryan Purcell	202-690-0138	bryan.purcell@usda.gov
India and South Asia	Arnella Trent	202-720-0881	arnella.trent@usda.gov
China and East Asia	Dath Mita, Ph.D.	202-720-7339	dath.mita@usda.gov
South Africa and Sub-Saharan Africa	Curt Reynolds, Ph.D.	202-690-0134	curt.reynolds@usda.gov
Indonesia and South East Asia	Justin Jenkins	202-720-0419	justin.jenkins@usda.gov
Mexico and Central America	Lisa Colson	202-720-6652	lisa.colson@usda.gov
Australia, Pakistan, and Central Asia	Jim Crutchfield	202-690-0135	james.crutchfield@usda.gov
Canada and the Caribbean	Shannon Moyo	771-221-5973	shannon.moyo@usda.gov
Russia, Ukraine, Kazakhstan, Moldova, and Belarus	Iliana Mladenova, Ph.D.	202-690-2315	iliana.mladenova@usda.gov



The Foreign Agricultural Service (FAS) updates its production, supply and distribution (PSD) database for cotton, oilseeds, and grains at 12:00 p.m. on the day the *World Agricultural Supply and Demand Estimates* (WASDE) report is released. This circular is released by 12:15 p.m.

FAS Reports and Databases:

World Agricultural Production

Current: <https://www.fas.usda.gov/data/world-agricultural-production>

Archive: <https://usda.library.cornell.edu/concern/publications/5q47rn72z?locale=en>

USDA's Foreign Agricultural Service (FAS) publishes a monthly report on crop acreage, yield and production in major countries worldwide. Sources include reporting from FAS's worldwide offices, official statistics of foreign governments, and analysis of economic data and satellite imagery. The reports reflect official USDA estimates released in the monthly *World Agricultural Supply and Demand Estimates* (WASDE).

World Markets and Trade

Current: <https://www.fas.usda.gov/data>

Archive:

https://usda.library.cornell.edu/catalog?f%5Bmember_of_collections_ssim%5D%5B%5D=Foreign+Agricultural+Service&locale=en

USDA's Foreign Agricultural Service (FAS) publishes monthly and quarterly reports which include data on U.S. and global trade, production, consumption and stocks, as well as analysis of developments affecting world trade in oilseeds, grains, cotton, livestock and poultry. The reports reflect official USDA estimates released in the monthly *World Agricultural Supply and Demand Estimates* (WASDE).

Global Agricultural Information Network (GAIN)

<https://gain.fas.usda.gov/>

USDA's Foreign Agricultural Service (FAS) provides timely reports on foreign markets through the Global Agriculture Information Network (GAIN) database. An average of 2,000 reports are added each year, with reports going back to 1995. GAIN reports are compiled by FAS' global market intelligence network, which includes FAS foreign service officers and locally engaged staff in over 90 overseas offices world-wide. They provide on-the-ground intelligence, insight, and analysis on nearly 200 countries, delivering information on foreign agricultural markets, crop conditions, and agro-political dynamics of interest to U.S. agriculture. GAIN reports contain assessments of commodity and trade issues made by USDA staff and are not necessarily statements of official U.S. government policy.

Production, Supply and Distribution (PS&D) Online

<https://apps.fas.usda.gov/psdonline/app/index.html#/app/home>

PSD Online is the public repository for USDA's Official Production, Supply and Distribution forecast data and reports for key agricultural commodities. PSD Online data are reviewed and updated monthly by an interagency committee chaired by USDA's World Agricultural Outlook Board (WAOB). The committee consist of representatives from Foreign Agricultural Service (FAS), the Economic Research Service (ERS), the Farm Service Agency (FSA), and the Agricultural Marketing Service (AMS).

EU Countries and Russia Wheat: Area and Production Estimates

<https://apps.fas.usda.gov/psdonline/app/index.html#/app/downloads> (click on PSD Datasets)

USDA's Foreign Agricultural Service (FAS) provides country-level area and production estimates for the nations of the European Union. For Russia, country-level area and production estimates are provided for Winter and Spring wheat. These datasets are reviewed and updated monthly by an interagency committee chaired by USDA's World Agricultural Outlook Board (WAOB) and can be downloaded through PSD datasets on PSD Online.



FAS Reports and Databases:

International Production Assessment (IPAD)

<https://ipad.fas.usda.gov/>

USDA's Foreign Agricultural Service (FAS) maintains a dynamic global crop production portal with key information including *World Agricultural Production* (WAP) briefs, Commodity Intelligence Reports (CIR), geospatial applications, crop production maps at a subnational level and crop calendars for the top-20 producing countries. Additionally, Crop Explorer (<https://ipad.fas.usda.gov/cropexplorer/>) displays rainfall, temperature, evapotranspiration, soil moisture, snow cover, and vegetation conditions in charts and maps.

USDA and NASA Global Agricultural Monitoring (GLAM)

<https://glam1.gsfc.nasa.gov/>

The USDA and NASA Global Agricultural Monitoring (GLAM) system provides near real-time and science quality Moderate Resolution Imaging Spectroradiometer (MODIS) Normalized Difference Vegetation Index (NDVI) from the satellites Terra and Aqua. The public can view and retrieve MODIS 8-day composited, global NDVI satellite imagery and time series data. GLAM was developed by NASA's Global Inventory Modeling and Mapping Studies (GIMMS) group for USDA's Foreign Agricultural Service.

Global Agricultural and Disaster Assessment System (GADAS)

<https://geo.fas.usda.gov/GADAS/index.html>

USDA's Foreign Agricultural Service (FAS) provides the Global Agricultural and Disaster Assessment System (GADAS), a web-based Geographic Information System (GIS) tool which integrates a vast array of highly detailed earth observation data streams, particularly targeted towards agricultural and disaster assessment analysis. GADAS is an interactive website which provides analysts with a wide variety of routine geospatial products (maps, charts, tables) they require for comprehensive situational investigations and recurring assessments.

Export Sales Reporting

<https://apps.fas.usda.gov/esrquery/>

USDA's Export Sales Reporting Program monitors U.S. agricultural export sales on a daily and weekly basis. Export sales reporting provides a constant stream of up-to-date market information for 40 U.S. agricultural commodities sold abroad. The weekly U.S. Export Sales report is the most currently available source of U.S. exports sales data. The data is used to analyze overall levels of export demand, determine where markets exit, and assess the relative position of U.S. commodities in foreign markets.

Global Agricultural Trade System (GATS)

<https://apps.fas.usda.gov/gats/default.aspx>

The Global Agricultural Trade System (GATS) is a searchable database containing monthly U.S. Census Bureau trade data organized by agricultural commodity and agricultural related product groups. Trade data is searchable by partner countries and partner groups. Historical U.S. agricultural trade data is available back to 1967. In addition, U.N. trade statistics (UN Comtrade) may be queried through GATS. UN trade data is available for nearly 200 countries or areas, dating from the inception of the Harmonized System (HS) of trade codes in 1989 to present. The database is continuously updated. U.S. trade data is updated monthly according to the U.S. Census Bureau's reporting system. UN Comtrade data are updated in GATS after nationally submitted data to the UN are standardized by the UN Statistical Division and added to the UN Comtrade database.

Other USDA Reports:

World Agricultural Supply and Demand Estimates (WASDE):

<http://www.usda.gov/oce/commodity/wasde/>

Economic Research Service:

<http://www.ers.usda.gov/topics/crops>

National Agricultural Statistics Service:

<http://www.nass.usda.gov/Publications/>

Table 01 World Crop Production Summary

Million Metric Tons

Commodity	World	Total Foreign	North America			Former Soviet		European	Asia (WAP)					South America		Selected Other			All Others
			United States	Canada	Mexico	Russia	Ukraine		China	India	Indonesia	Pakistan	Thailand	Argentina	Brazil	Australia	South Africa	Turkey	
			-	-	-	-	-		-	-	-	-	-	-	-	-	-	-	
---Million metric tons---																			
Wheat																			
2022/23	789.5	744.6	44.9	34.8	3.6	92.0	21.5	nr	137.7	104.0	0.0	26.2	0.0	12.6	10.6	40.5	2.1	17.3	241.7
2023/24 prel.	790.5	741.2	49.3	32.9	3.5	91.5	23.0	nr	136.6	110.6	0.0	28.2	0.0	15.9	8.1	26.0	2.1	21.0	242.0
2024/25 proj.																			
Aug	798.3	744.3	53.9	35.0	2.8	83.0	21.6	nr	140.0	114.0	0.0	31.4	0.0	18.0	9.5	30.0	2.1	19.0	237.9
Sep	796.9	742.9	53.9	35.0	2.8	83.0	22.3	nr	140.0	114.0	0.0	31.4	0.0	18.0	9.5	32.0	2.0	19.0	233.9
Coarse Grains																			
2022/23	1,451.7	1,095.3	356.4	30.5	33.9	44.1	33.9	nr	285.7	56.8	12.4	11.5	5.3	42.9	143.5	18.8	17.5	14.8	343.6
2023/24 prel.	1,499.1	1,096.2	402.9	27.5	27.8	42.5	39.8	nr	297.1	56.0	12.7	10.4	5.4	58.4	128.5	14.4	14.2	17.0	344.3
2024/25 proj.																			
Aug	1,504.3	1,107.9	396.4	27.1	30.4	37.4	33.3	nr	300.3	56.9	13.2	10.0	5.5	59.5	133.8	15.4	17.5	15.1	352.6
Sep	1,502.4	1,104.5	398.0	26.2	30.4	36.8	33.4	nr	300.3	56.9	13.2	10.0	5.5	59.5	133.8	16.3	17.6	15.1	349.6
Rice, Milled																			
2022/23	516.0	510.9	5.1	0.0	0.1	0.6	0.0	nr	145.9	135.8	33.9	7.3	20.9	0.8	6.8	0.4	0.0	0.6	157.8
2023/24 prel.	520.6	513.7	6.9	0.0	0.2	0.7	0.0	nr	144.6	137.0	33.0	9.9	20.0	0.8	7.2	0.4	0.0	0.5	159.3
2024/25 proj.																			
Aug	527.7	520.7	7.0	0.0	0.2	0.8	0.0	nr	146.0	138.0	34.0	10.0	20.1	0.9	7.5	0.5	0.0	0.6	162.2
Sep	527.3	520.3	7.0	0.0	0.2	0.8	0.0	nr	146.0	139.0	34.0	10.0	20.1	0.9	7.5	0.4	0.0	0.5	161.0
Total Grains																			
2022/23	2,757.2	2,350.8	406.4	65.3	37.6	136.7	55.4	nr	569.4	296.5	46.3	45.0	26.2	56.2	160.9	59.8	19.6	32.7	743.1
2023/24 prel.	2,810.3	2,351.1	459.1	60.5	31.4	134.7	62.8	nr	578.4	303.6	45.7	48.4	25.4	75.1	143.9	40.9	16.3	38.6	745.7
2024/25 proj.																			
Aug	2,830.3	2,373.0	457.3	62.1	33.3	121.2	54.9	nr	586.3	308.9	47.2	51.4	25.6	78.4	150.8	45.8	19.6	34.6	752.8
Sep	2,826.6	2,367.8	458.9	61.2	33.3	120.6	55.7	nr	586.3	309.9	47.2	51.4	25.6	78.4	150.8	48.6	19.6	34.6	744.5
Oilseeds																			
2022/23	638.3	512.5	125.8	25.5	0.9	26.6	19.8	nr	67.9	42.3	15.0	2.7	1.0	31.5	166.9	9.8	3.8	4.0	94.9
2023/24 prel.	657.9	535.6	122.2	26.3	0.6	28.1	25.5	nr	69.1	41.6	14.8	3.8	1.0	54.1	158.8	7.3	2.8	3.1	98.8
2024/25 proj.																			
Aug	690.5	555.5	135.0	27.0	0.6	28.4	24.0	nr	67.8	43.5	14.9	3.3	1.1	56.8	175.7	6.8	3.9	3.4	98.5
Sep	687.4	552.7	134.7	27.2	0.6	28.4	23.0	nr	67.9	43.3	14.9	3.1	1.1	56.8	175.7	6.8	3.9	3.4	96.6
Cotton																			
2022/23	116.5	102.0	14.5	0.0	1.6	0.0	0.0	1.6	30.8	26.3	0.0	3.9	0.0	1.2	11.7	5.8	0.1	4.9	14.2
2023/24 prel.	113.6	101.5	12.1	0.0	0.9	0.0	0.0	1.1	27.4	25.8	0.0	7.0	0.0	1.6	14.6	5.0	0.1	3.2	15.0
2024/25 proj.																			
Aug	117.6	102.5	15.1	0.0	0.8	0.0	0.0	1.4	27.5	24.5	0.0	6.0	0.0	1.6	16.7	5.0	0.1	4.0	15.0
Sep	116.4	101.9	14.5	0.0	0.8	0.0	0.0	1.4	27.8	24.0	0.0	5.7	0.0	1.6	16.7	5.0	0.1	4.0	14.9

1/ Includes wheat, coarse grains, and rice (milled) shown above.

Table 02 Wheat Area, Yield, and Production

Country / Region	Area (Million hectares)				Yield (Metric tons per hectare)				Production (Million metric tons)				Change in Production			
	2022/23	Prel.	2024/25 Proj.		2022/23	Prel.	2024/25 Proj.		2022/23	Prel.	2024/25 Proj.		From last month		From last year	
		2023/24	Aug	Sep		2023/24	Aug	Sep		2023/24	Aug	Sep	MMT	Percent	MMT	Percent
World	219.59	222.76	222.03	222.11	3.60	3.55	3.60	3.59	789.49	790.54	798.28	796.88	-1.40	-0.18	6.34	0.80
United States	14.36	15.08	15.35	15.35	3.13	3.27	3.51	3.51	44.90	49.31	53.93	53.93	0.00	0.00	4.62	9.36
Total Foreign	205.23	207.68	206.68	206.76	3.63	3.57	3.60	3.59	744.59	741.23	744.35	742.95	-1.40	-0.19	1.72	0.23
European Union	24.40	24.31	23.10	23.00	5.50	5.55	5.54	5.39	134.29	134.87	128.00	124.00	-4.00	-3.13	-10.87	-8.06
United Kingdom	1.81	1.72	1.40	1.40	8.57	8.13	7.75	7.75	15.54	13.98	10.85	10.85	0.00	0.00	-3.13	-22.39
Serbia	0.62	0.73	0.63	0.63	5.32	4.69	4.80	4.80	3.30	3.40	3.00	3.00	0.00	0.00	-0.40	-11.76
China	23.52	23.63	23.70	23.70	5.86	5.78	5.91	5.91	137.72	136.59	140.00	140.00	0.00	0.00	3.41	2.50
South Asia																
India	30.46	31.40	31.30	31.30	3.41	3.52	3.64	3.64	104.00	110.55	114.00	114.00	0.00	0.00	3.45	3.12
Pakistan	8.98	9.03	9.63	9.63	2.92	3.12	3.26	3.26	26.21	28.16	31.40	31.40	0.00	0.00	3.24	11.50
Afghanistan	1.86	2.35	2.30	2.30	2.05	2.20	2.26	2.26	3.80	5.17	5.20	5.20	0.00	0.00	0.03	0.58
Nepal	0.72	0.72	0.72	0.72	2.98	2.90	2.90	2.90	2.15	2.09	2.09	2.09	0.00	0.00	0.00	0.00
Former Soviet Union - 12																
Russia	29.00	28.83	28.00	28.00	3.17	3.17	2.96	2.96	92.00	91.50	83.00	83.00	0.00	0.00	-8.50	-9.29
Russia Winter	16.30	15.27	15.80	15.80	4.17	4.19	3.64	3.64	68.00	64.00	57.50	57.50	0.00	0.00	-6.50	-10.16
Russia Spring	12.70	13.56	12.20	12.20	1.89	2.03	2.09	2.09	24.00	27.50	25.50	25.50	0.00	0.00	-2.00	-7.27
Ukraine	5.60	5.01	5.20	5.20	3.84	4.59	4.15	4.29	21.50	23.00	21.60	22.30	0.70	3.24	-0.70	-3.04
Kazakhstan	12.81	13.13	13.00	13.00	1.28	0.92	1.23	1.23	16.40	12.11	16.00	16.00	0.00	0.00	3.89	32.11
Uzbekistan	1.26	1.40	1.30	1.30	4.99	4.62	5.15	5.15	6.27	6.46	6.70	6.70	0.00	0.00	0.24	3.68
Belarus	0.68	0.68	0.69	0.69	3.48	3.38	3.80	3.80	2.35	2.30	2.60	2.60	0.00	0.00	0.30	13.04
Canada	10.10	10.70	10.60	10.60	3.45	3.08	3.30	3.30	34.81	32.95	35.00	35.00	0.00	0.00	2.05	6.23
South America																
Argentina	5.50	5.58	6.00	6.00	2.28	2.84	3.00	3.00	12.55	15.85	18.00	18.00	0.00	0.00	2.15	13.56
Brazil	3.09	3.47	3.50	3.50	3.42	2.33	2.71	2.71	10.55	8.10	9.50	9.50	0.00	0.00	1.40	17.28
Australia	13.05	12.37	12.80	13.00	3.11	2.10	2.34	2.46	40.55	25.96	30.00	32.00	2.00	6.67	6.04	23.27
Africa																
Egypt	1.45	1.35	1.40	1.40	6.55	6.57	6.57	6.57	9.50	8.87	9.20	9.20	0.00	0.00	0.33	3.72
Morocco	2.44	2.50	2.20	2.20	1.11	1.66	1.14	1.14	2.71	4.16	2.50	2.50	0.00	0.00	-1.66	-39.90
Algeria	1.80	1.80	1.80	1.80	2.00	1.50	1.67	1.67	3.60	2.70	3.00	3.00	0.00	0.00	0.30	11.11
Ethiopia	1.90	1.86	1.90	1.90	3.05	3.01	3.00	3.00	5.80	5.60	5.70	5.70	0.00	0.00	0.10	1.79
Middle East																
Turkey	6.80	7.20	7.25	7.25	2.54	2.92	2.62	2.62	17.25	21.00	19.00	19.00	0.00	0.00	-2.00	-9.52
Iran	6.20	6.20	6.20	6.20	2.13	2.26	2.34	2.34	13.20	14.00	14.50	14.50	0.00	0.00	0.50	3.57
Iraq	2.10	2.60	2.70	2.70	1.52	2.00	2.11	2.11	3.20	5.20	5.70	5.70	0.00	0.00	0.50	9.62
Syria	1.18	1.20	1.30	1.30	1.31	2.00	2.15	2.15	1.55	2.40	2.80	2.80	0.00	0.00	0.40	16.67
Mexico	0.60	0.56	0.48	0.48	6.06	6.21	5.83	5.83	3.61	3.48	2.80	2.80	0.00	0.00	-0.68	-19.45
Others	7.33	7.35	7.59	7.57	2.75	2.83	2.93	2.92	20.18	20.78	22.21	22.11	-0.10	-0.45	1.33	6.39

Table 03 Total Coarse Grain Area, Yield, and Production

Country / Region	Area (Million hectares)				Yield (Metric tons per hectare)				Production (Million metric tons)				Change in Production			
	Prel.		2024/25 Proj.		Prel.		2024/25 Proj.		Prel.		2024/25 Proj.		From last month		From last year	
	2022/23	2023/24	Aug	Sep	2022/23	2023/24	Aug	Sep	2022/23	2023/24	Aug	Sep	MMT	Percent	MMT	Percent
World	336.31	336.91	335.25	335.12	4.32	4.45	4.49	4.48	1,451.71	1,499.07	1,504.29	1,502.45	-1.84	-0.12	3.38	0.23
United States	35.18	38.99	36.89	36.89	10.13	10.33	10.75	10.79	356.45	402.89	396.38	397.96	1.58	0.40	-4.93	-1.22
Total Foreign	301.13	297.92	298.36	298.23	3.64	3.68	3.71	3.70	1,095.26	1,096.19	1,107.91	1,104.49	-3.42	-0.31	8.30	0.76
China	45.55	46.65	47.14	47.14	6.27	6.37	6.37	6.37	285.70	297.14	300.30	300.30	0.00	0.00	3.16	1.06
European Union	26.54	26.03	26.28	26.28	5.01	5.24	5.35	5.27	133.06	136.41	140.65	138.46	-2.19	-1.56	2.05	1.50
United Kingdom	1.37	1.38	1.47	1.47	6.33	5.87	5.92	5.92	8.67	8.08	8.73	8.73	0.00	0.00	0.65	8.01
South America																
Brazil	24.48	23.71	24.56	24.56	5.86	5.42	5.45	5.45	143.48	128.54	133.76	133.76	0.00	0.00	5.22	4.06
Argentina	9.21	9.30	8.76	8.76	4.66	6.28	6.79	6.79	42.91	58.39	59.49	59.49	0.00	0.00	1.11	1.89
Former Soviet Union - 12																
Russia	13.60	12.88	11.85	11.85	3.25	3.30	3.16	3.11	44.13	42.54	37.40	36.80	-0.60	-1.60	-5.74	-13.49
Ukraine	6.32	6.24	5.95	5.95	5.37	6.38	5.60	5.62	33.93	39.78	33.32	33.42	0.10	0.30	-6.36	-15.98
Kazakhstan	2.63	2.87	2.65	2.65	1.79	1.40	1.71	1.71	4.71	4.01	4.53	4.53	0.00	0.00	0.52	13.03
Belarus	1.03	1.05	1.12	1.12	3.11	3.09	3.21	3.21	3.20	3.23	3.58	3.58	0.00	0.00	0.35	10.84
Africa																
Nigeria	13.50	13.40	13.10	13.10	1.61	1.42	1.53	1.53	21.70	19.01	20.10	20.10	0.00	0.00	1.09	5.72
South Africa	3.13	3.20	3.35	3.34	5.61	4.45	5.23	5.27	17.53	14.21	17.53	17.62	0.09	0.48	3.41	23.97
Tanzania	5.30	5.50	5.50	5.60	1.36	1.51	1.51	1.67	7.23	8.33	8.33	9.33	1.00	12.01	1.00	12.01
Burkina Faso	4.09	4.20	4.20	4.20	1.16	1.10	1.13	1.13	4.73	4.63	4.75	4.75	0.00	0.00	0.12	2.64
Ethiopia	5.45	5.41	5.64	5.64	3.21	3.25	3.18	3.18	17.47	17.56	17.91	17.91	0.00	0.00	0.35	1.99
Egypt	1.10	1.12	1.14	1.14	7.52	7.19	7.43	7.43	8.28	8.07	8.48	8.48	0.00	0.00	0.41	5.08
Mali	5.20	4.80	4.90	4.90	1.38	1.43	1.43	1.43	7.15	6.86	7.00	7.00	0.00	0.00	0.14	2.07
India	23.90	25.23	25.00	25.00	2.38	2.22	2.28	2.28	56.78	56.01	56.90	56.90	0.00	0.00	0.89	1.58
Southeast Asia																
Indonesia	3.50	3.70	3.80	3.80	3.54	3.43	3.47	3.47	12.40	12.70	13.20	13.20	0.00	0.00	0.50	3.94
Philippines	2.54	2.49	2.60	2.60	3.28	3.25	3.27	3.27	8.32	8.10	8.50	8.50	0.00	0.00	0.40	4.94
Vietnam	0.89	0.87	0.85	0.85	4.99	5.00	5.06	5.06	4.42	4.35	4.30	4.30	0.00	0.00	-0.05	-1.15
Thailand	1.21	1.25	1.26	1.26	4.35	4.29	4.34	4.34	5.25	5.35	5.45	5.45	0.00	0.00	0.10	1.87
Mexico	8.64	7.65	8.05	8.05	3.92	3.64	3.77	3.77	33.88	27.82	30.36	30.36	0.00	0.00	2.55	9.15
Canada	5.74	5.24	4.99	4.94	5.32	5.25	5.43	5.31	30.54	27.52	27.12	26.23	-0.89	-3.27	-1.30	-4.71
Australia	5.69	5.63	5.86	5.91	3.31	2.56	2.62	2.75	18.84	14.44	15.37	16.27	0.90	5.86	1.83	12.64
Middle East																
Turkey	4.57	4.59	4.55	4.55	3.25	3.72	3.31	3.31	14.84	17.05	15.06	15.06	0.00	0.00	-1.99	-11.65
Iran	1.86	1.86	1.81	1.81	2.38	2.38	2.50	2.50	4.42	4.42	4.52	4.52	0.00	0.00	0.10	2.26
Others	74.13	71.69	72.00	71.79	1.64	1.70	1.68	1.66	121.70	121.65	121.28	119.45	-1.83	-1.51	-2.20	-1.81

World and Selected Countries and Regions; Coarse Grain includes: Barley, Corn, Millet, Mixed Grains, Oats, Rye and Sorghum

Table 04 Corn Area, Yield, and Production

Country / Region	Area (Million hectares)				Yield (Metric tons per hectare)				Production (Million metric tons)				Change in Production						
	2022/23	Prel.		2024/25 Proj.		2022/23	Prel.		2024/25 Proj.		2022/23	Prel.		2024/25 Proj.		From last month		From last year	
		2023/24	Aug	Sep	2023/24		Aug	Sep	2023/24	Aug		Sep	MMT	Percent	MMT	Percent			
World	200.65	203.20	201.57	201.45	5.78	6.03	6.05	6.05	1,159.69	1,224.33	1,219.82	1,218.57	-1.26	-0.10	-5.76	-0.47			
United States	31.85	35.01	33.47	33.47	10.89	11.13	11.49	11.52	346.74	389.69	384.74	385.73	0.99	0.26	-3.96	-1.02			
Total Foreign	168.80	168.19	168.10	167.98	4.82	4.96	4.97	4.96	812.95	834.63	835.08	832.84	-2.25	-0.27	-1.79	-0.21			
China	43.07	44.22	44.70	44.70	6.44	6.53	6.53	6.53	277.20	288.84	292.00	292.00	0.00	0.00	3.16	1.09			
South America																			
Brazil	22.40	21.50	22.30	22.30	6.12	5.67	5.70	5.70	137.00	122.00	127.00	127.00	0.00	0.00	5.00	4.10			
Argentina	6.75	7.00	6.40	6.40	5.33	7.14	7.97	7.97	36.00	50.00	51.00	51.00	0.00	0.00	1.00	2.00			
Bolivia	0.44	0.43	0.42	0.42	2.52	2.62	2.56	2.56	1.10	1.13	1.08	1.08	0.00	0.00	-0.05	-4.44			
European Union	8.80	8.22	8.60	8.60	5.95	7.47	7.03	6.86	52.33	61.45	60.50	59.00	-1.50	-2.48	-2.45	-3.99			
Africa																			
South Africa	2.95	3.00	3.15	3.15	5.81	4.57	5.40	5.40	17.10	13.70	17.00	17.00	0.00	0.00	3.30	24.09			
Nigeria	5.80	5.70	5.10	5.10	2.23	1.94	2.16	2.16	12.95	11.05	11.00	11.00	0.00	0.00	-0.05	-0.48			
Ethiopia	2.55	2.50	2.55	2.55	4.00	4.00	4.00	4.00	10.20	10.00	10.20	10.20	0.00	0.00	0.20	2.00			
Egypt	0.93	0.95	0.97	0.97	8.00	7.58	7.84	7.84	7.44	7.20	7.60	7.60	0.00	0.00	0.40	5.56			
Tanzania	4.00	4.20	4.20	4.30	1.48	1.67	1.67	1.86	5.90	7.00	7.00	8.00	1.00	14.29	1.00	14.29			
Malawi	1.82	1.79	1.50	1.50	2.05	1.96	1.33	1.33	3.72	3.51	2.00	2.00	0.00	0.00	-1.51	-43.02			
Zambia	1.12	1.42	0.69	0.69	2.43	2.30	2.20	2.20	2.71	3.26	1.51	1.51	0.00	0.00	-1.75	-53.72			
Kenya	2.16	2.00	2.00	2.00	1.43	1.85	1.85	1.85	3.09	3.70	3.70	3.70	0.00	0.00	0.00	0.00			
Uganda	1.10	1.10	1.10	1.10	2.55	2.55	2.55	2.55	2.80	2.80	2.80	2.80	0.00	0.00	0.00	0.00			
Zimbabwe	1.00	1.00	0.90	0.90	1.45	1.50	0.61	0.61	1.45	1.50	0.55	0.55	0.00	0.00	-0.95	-63.33			
Former Soviet Union - 12																			
Ukraine	4.05	4.20	4.10	4.10	6.67	7.74	6.63	6.63	27.00	32.50	27.20	27.20	0.00	0.00	-5.30	-16.31			
Russia	2.64	2.40	2.50	2.50	6.00	6.92	5.64	5.40	15.83	16.60	14.10	13.50	-0.60	-4.26	-3.10	-18.67			
South Asia																			
India	10.74	11.00	11.00	11.00	3.54	3.41	3.41	3.41	38.09	37.50	37.50	37.50	0.00	0.00	0.00	0.00			
Pakistan	1.72	1.64	1.50	1.50	6.39	6.00	6.33	6.33	10.99	9.85	9.50	9.50	0.00	0.00	-0.35	-3.52			
Nepal	0.97	0.97	0.97	0.97	2.82	2.82	2.82	2.82	2.72	2.72	2.72	2.72	0.00	0.00	0.00	0.00			
Southeast Asia																			
Indonesia	3.50	3.70	3.80	3.80	3.54	3.43	3.47	3.47	12.40	12.70	13.20	13.20	0.00	0.00	0.50	3.94			
Philippines	2.54	2.49	2.60	2.60	3.28	3.25	3.27	3.27	8.32	8.10	8.50	8.50	0.00	0.00	0.40	4.94			
Vietnam	0.89	0.87	0.85	0.85	4.99	5.00	5.06	5.06	4.42	4.35	4.30	4.30	0.00	0.00	-0.05	-1.15			
Thailand	1.18	1.22	1.23	1.23	4.41	4.34	4.39	4.39	5.20	5.30	5.40	5.40	0.00	0.00	0.10	1.89			
Mexico	6.89	6.10	6.40	6.40	4.07	3.72	3.91	3.91	28.08	22.70	25.00	25.00	0.00	0.00	2.30	10.13			
Canada	1.44	1.52	1.45	1.45	10.07	10.15	10.00	10.48	14.54	15.42	14.50	15.20	0.70	4.83	-0.22	-1.43			
Turkey	0.53	0.65	0.56	0.56	12.83	12.92	13.04	13.04	6.80	8.40	7.30	7.30	0.00	0.00	-1.10	-13.10			
Others	26.85	26.40	26.57	26.35	2.52	2.70	2.67	2.62	67.59	71.35	70.93	69.08	-1.85	-2.60	-2.27	-3.18			

World and Selected Countries and Regions

Table 05 Barley Area, Yield, and Production

Country / Region	Area (Million hectares)				Yield (Metric tons per hectare)				Production (Million metric tons)				Change in Production			
	Prel.		2024/25 Proj.		Prel.		2024/25 Proj.		Prel.		2024/25 Proj.		From last month		From last year	
	2022/23	2023/24	Aug	Sep	2022/23	2023/24	Aug	Sep	2022/23	2023/24	Aug	Sep	MMT	Percent	MMT	Percent
World	47.13	46.73	45.63	45.68	3.20	3.05	3.18	3.16	150.90	142.49	145.00	144.31	-0.70	-0.48	1.82	1.28
United States	0.98	1.03	0.76	0.76	3.86	3.90	4.25	4.25	3.79	4.03	3.24	3.24	0.00	0.00	-0.79	-19.58
Total Foreign	46.15	45.69	44.87	44.92	3.19	3.03	3.16	3.14	147.11	138.46	141.76	141.07	-0.70	-0.49	2.61	1.88
European Union	10.32	10.37	10.35	10.40	5.02	4.62	5.01	4.95	51.83	47.86	51.90	51.45	-0.45	-0.87	3.59	7.51
United Kingdom	1.12	1.14	1.20	1.20	6.62	6.12	6.25	6.25	7.39	6.96	7.50	7.50	0.00	0.00	0.54	7.71
Former Soviet Union - 12																
Russia	7.75	7.65	6.70	6.70	2.77	2.68	2.73	2.73	21.50	20.50	18.30	18.30	0.00	0.00	-2.20	-10.73
Ukraine	1.95	1.68	1.50	1.50	3.13	3.78	3.53	3.60	6.10	6.35	5.30	5.40	0.10	1.89	-0.95	-14.96
Kazakhstan	2.18	2.43	2.25	2.25	1.51	1.08	1.51	1.51	3.29	2.61	3.40	3.40	0.00	0.00	0.79	30.07
Belarus	0.40	0.40	0.40	0.40	2.75	2.75	3.00	3.00	1.10	1.10	1.20	1.20	0.00	0.00	0.10	9.09
Azerbaijan	0.39	0.36	0.36	0.36	2.85	2.99	3.06	3.06	1.10	1.07	1.10	1.10	0.00	0.00	0.03	3.09
Canada	2.64	2.70	2.36	2.32	3.79	3.29	3.64	3.23	9.99	8.91	8.60	7.50	-1.10	-12.79	-1.41	-15.78
Australia	4.13	4.20	4.40	4.45	3.43	2.57	2.61	2.74	14.14	10.80	11.50	12.20	0.70	6.09	1.40	12.96
Middle East																
Turkey	3.80	3.70	3.75	3.75	1.95	2.16	1.89	1.89	7.40	8.00	7.10	7.10	0.00	0.00	-0.90	-11.25
Iran	1.65	1.65	1.60	1.60	1.82	1.82	1.94	1.94	3.00	3.00	3.10	3.10	0.00	0.00	0.10	3.33
Iraq	0.21	0.16	1.00	1.00	1.12	1.29	1.40	1.40	0.24	0.20	1.40	1.40	0.00	0.00	1.20	600.00
Syria	1.12	1.10	1.10	1.10	0.16	0.45	1.09	1.09	0.18	0.50	1.20	1.20	0.00	0.00	0.70	140.00
Africa																
Ethiopia	0.98	0.98	0.98	0.98	2.22	2.50	2.54	2.54	2.18	2.45	2.49	2.49	0.00	0.00	0.04	1.43
Morocco	1.14	1.17	0.80	0.80	0.61	1.15	0.83	0.83	0.70	1.35	0.66	0.66	0.00	0.00	-0.69	-51.11
Algeria	1.03	1.03	1.03	1.03	1.37	1.00	1.17	1.17	1.40	1.03	1.20	1.20	0.00	0.00	0.18	17.07
Tunisia	0.30	0.11	0.35	0.35	1.53	0.82	1.57	1.57	0.46	0.09	0.55	0.55	0.00	0.00	0.46	517.98
South Africa	0.10	0.11	0.11	0.10	2.99	3.49	3.36	4.15	0.30	0.38	0.37	0.42	0.05	12.16	0.04	10.08
South America																
Argentina	1.59	1.30	1.25	1.25	2.95	3.92	3.76	3.76	4.70	5.10	4.70	4.70	0.00	0.00	-0.40	-7.84
Uruguay	0.21	0.18	0.19	0.19	4.25	3.89	4.21	4.21	0.90	0.70	0.80	0.80	0.00	0.00	0.10	14.29
Brazil	0.13	0.12	0.14	0.14	3.87	3.79	4.07	4.07	0.50	0.46	0.55	0.55	0.00	0.00	0.10	20.88
India	0.45	0.63	0.50	0.50	3.03	3.05	3.00	3.00	1.37	1.91	1.50	1.50	0.00	0.00	-0.41	-21.59
China	0.56	0.50	0.50	0.50	3.91	4.00	4.00	4.00	2.19	2.00	2.00	2.00	0.00	0.00	0.00	0.00
Mexico	0.30	0.29	0.29	0.29	2.69	2.69	2.69	2.69	0.80	0.78	0.78	0.78	0.00	0.00	0.00	0.00
Afghanistan	0.06	0.08	0.07	0.07	1.53	1.38	1.43	1.43	0.10	0.11	0.10	0.10	0.00	0.00	-0.01	-9.09
Others	1.67	1.68	1.70	1.70	2.57	2.53	2.63	2.64	4.28	4.25	4.47	4.48	0.01	0.22	0.22	5.27

World and Selected Countries and Regions

Table 06 Oats Area, Yield, and Production

Country / Region	Area (Million hectares)				Yield (Metric tons per hectare)				Production (Million metric tons)				Change in Production			
	2022/23	Prel.	2024/25 Proj.		2022/23	Prel.	2024/25 Proj.		2022/23	Prel.	2024/25 Proj.		From last month		From last year	
		2023/24	Aug	Sep		2023/24	Aug	Sep		2023/24	Aug	Sep	MMT	Percent	MMT	Percent
World	9.39	8.36	8.67	8.64	2.70	2.32	2.55	2.53	25.34	19.35	22.13	21.87	-0.26	-1.15	2.53	13.06
United States	0.36	0.34	0.36	0.36	2.35	2.46	2.70	2.70	0.84	0.83	0.98	0.98	0.00	0.00	0.15	18.48
Total Foreign	9.04	8.02	8.30	8.28	2.71	2.31	2.55	2.52	24.50	18.52	21.15	20.89	-0.26	-1.21	2.37	12.82
European Union	2.35	2.30	2.40	2.40	3.20	2.58	3.08	3.17	7.51	5.93	7.40	7.60	0.20	2.70	1.67	28.14
Former Soviet Union - 12																
Russia	2.13	1.77	1.70	1.70	2.11	1.86	1.91	1.91	4.50	3.30	3.25	3.25	0.00	0.00	-0.05	-1.52
Ukraine	0.15	0.17	0.17	0.17	2.47	2.53	2.35	2.35	0.38	0.43	0.40	0.40	0.00	0.00	-0.03	-6.98
Belarus	0.16	0.16	0.16	0.16	2.42	2.26	2.06	2.06	0.38	0.35	0.32	0.32	0.00	0.00	-0.03	-8.57
Kazakhstan	0.20	0.19	0.19	0.19	1.16	0.79	1.00	1.00	0.23	0.15	0.19	0.19	0.00	0.00	0.04	26.67
Canada	1.40	0.83	0.97	0.95	3.73	3.20	3.51	3.06	5.23	2.64	3.40	2.90	-0.50	-14.71	0.26	9.72
South America																
Argentina	0.26	0.28	0.30	0.30	1.67	2.03	2.00	2.00	0.43	0.57	0.60	0.60	0.00	0.00	0.04	6.19
Brazil	0.53	0.52	0.52	0.52	2.22	2.24	2.33	2.33	1.18	1.17	1.20	1.20	0.00	0.00	0.03	2.74
Chile	0.07	0.09	0.10	0.10	4.63	5.39	4.70	4.75	0.33	0.46	0.47	0.48	0.01	1.06	0.02	3.71
Uruguay	0.02	0.01	0.02	0.02	2.40	2.20	2.00	2.00	0.04	0.02	0.03	0.03	0.00	0.00	0.01	36.36
Oceania																
Australia	0.75	0.70	0.73	0.73	2.13	1.43	1.66	1.66	1.59	1.00	1.20	1.20	0.00	0.00	0.20	20.00
New Zealand	0.01	0.00	0.00	0.00	6.60	6.50	6.25	6.25	0.03	0.03	0.03	0.03	0.00	0.00	0.00	-3.85
China	0.41	0.41	0.41	0.41	1.48	1.48	1.48	1.48	0.60	0.60	0.60	0.60	0.00	0.00	0.00	0.00
Africa																
Algeria	0.08	0.08	0.08	0.08	1.31	1.31	1.31	1.31	0.11	0.11	0.11	0.11	0.00	0.00	0.00	0.00
Morocco	0.01	0.02	0.02	0.02	0.31	0.40	0.40	0.40	0.00	0.01	0.01	0.01	0.00	0.00	0.00	0.00
South Africa	0.03	0.03	0.03	0.03	1.04	1.46	1.00	2.33	0.03	0.04	0.03	0.07	0.04	133.33	0.03	70.73
Other Europe																
United Kingdom	0.18	0.17	0.20	0.20	5.72	4.97	5.00	5.00	1.01	0.83	1.00	1.00	0.00	0.00	0.17	20.48
Norway	0.06	0.07	0.07	0.07	4.62	4.29	4.29	4.29	0.29	0.30	0.30	0.30	0.00	0.00	0.00	0.00
Serbia	0.02	0.02	0.02	0.02	2.80	3.00	3.00	3.00	0.04	0.06	0.06	0.06	0.00	0.00	0.00	0.00
Albania	0.02	0.02	0.02	0.02	2.27	2.27	2.27	2.27	0.03	0.03	0.03	0.03	0.00	0.00	0.00	0.00
Bosnia and Herzegovina	0.01	0.01	0.01	0.01	4.00	3.43	3.43	3.43	0.04	0.02	0.02	0.02	0.00	0.00	0.00	0.00
Turkey	0.14	0.13	0.13	0.13	2.64	2.60	2.62	2.62	0.37	0.33	0.34	0.34	0.00	0.00	0.02	4.62
Mexico	0.05	0.03	0.04	0.04	2.22	2.20	2.00	2.00	0.11	0.06	0.08	0.08	0.00	0.00	0.03	45.45
Others	0.03	0.06	0.05	0.05	1.63	1.68	1.78	1.78	0.05	0.09	0.08	0.08	0.00	0.00	-0.01	-12.77

World and Selected Countries and Regions

Table 07 Rye Area, Yield, and Production

Country / Region	Area (Million hectares)				Yield (Metric tons per hectare)				Production (Million metric tons)				Change in Production						
	2022/23	Prel.		2024/25 Proj.		2022/23	Prel.		2024/25 Proj.		2022/23	Prel.		2024/25 Proj.		From last month		From last year	
		2023/24	Aug	Sep	2023/24		Aug	Sep	2023/24	Aug		Sep	MMT	Percent	MMT	Percent			
World	3.69	3.65	3.45	3.41	3.29	3.20	3.27	3.20	12.15	11.71	11.28	10.90	-0.39	-3.43	-0.81	-6.91			
United States	0.14	0.13	0.15	0.15	2.26	2.03	2.20	2.20	0.32	0.26	0.34	0.34	0.00	0.00	0.07	27.65			
Total Foreign	3.55	3.52	3.29	3.25	3.33	3.25	3.32	3.25	11.83	11.44	10.95	10.56	-0.39	-3.54	-0.88	-7.71			
European Union	1.77	1.88	1.80	1.75	4.26	4.06	4.22	4.11	7.55	7.63	7.60	7.20	-0.40	-5.26	-0.43	-5.67			
Former Soviet Union - 12																			
Russia	0.88	0.79	0.66	0.66	2.27	2.15	2.05	2.05	2.00	1.70	1.35	1.35	0.00	0.00	-0.35	-20.59			
Belarus	0.30	0.31	0.32	0.32	2.50	2.52	2.38	2.38	0.75	0.78	0.76	0.76	0.00	0.00	-0.02	-2.56			
Ukraine	0.10	0.08	0.07	0.07	3.15	3.00	2.86	2.86	0.32	0.24	0.20	0.20	0.00	0.00	-0.04	-16.67			
Kazakhstan	0.03	0.02	0.02	0.02	1.76	0.86	1.15	1.15	0.06	0.02	0.02	0.02	0.00	0.00	0.01	27.78			
Turkey	0.10	0.11	0.11	0.11	2.79	2.91	2.91	2.91	0.27	0.32	0.32	0.32	0.00	0.00	0.00	0.00			
Canada	0.15	0.12	0.11	0.12	3.42	3.09	3.14	3.03	0.52	0.36	0.35	0.36	0.01	3.77	0.00	0.00			
South America																			
Chile	0.00	0.00	0.00	0.00	5.00	0.00	0.00	0.00	0.01	0.00	0.00	0.00	0.00	100.00	0.00	100.00			
Argentina	0.11	0.12	0.11	0.11	1.66	1.85	1.76	1.76	0.18	0.22	0.19	0.19	0.00	0.00	-0.03	-15.14			
Other Europe																			
Bosnia and Herzegovina	0.00	0.00	0.00	0.00	3.00	3.00	3.00	3.00	0.01	0.01	0.01	0.01	0.00	0.00	0.00	-33.33			
Switzerland	0.00	0.00	0.00	0.00	5.00	5.00	5.00	5.00	0.01	0.01	0.01	0.01	0.00	0.00	0.00	0.00			
Serbia	0.01	0.01	0.01	0.01	3.00	3.33	3.00	3.00	0.02	0.02	0.02	0.02	0.00	0.00	0.00	-10.00			
Australia	0.05	0.05	0.05	0.05	0.71	0.71	0.71	0.71	0.03	0.03	0.03	0.03	0.00	0.00	0.00	0.00			
Others	0.05	0.04	0.04	0.04	2.48	2.40	2.20	2.20	0.11	0.10	0.10	0.10	0.00	0.00	-0.01	-5.83			

World and Selected Countries and Regions

Table 08 Sorghum Area, Yield, and Production

Country / Region	Area (Million hectares)				Yield (Metric tons per hectare)				Production (Million metric tons)				Change in Production						
	2022/23	Prel.		2024/25 Proj.		2022/23	Prel.		2024/25 Proj.		2022/23	Prel.		2024/25 Proj.		From last month		From last year	
		2023/24	Aug	Sep	2023/24		Aug	Sep	2023/24	Aug		Sep	MMT	Percent	MMT	Percent			
World	40.64	40.18	41.91	41.95	1.42	1.45	1.46	1.48	57.62	58.36	61.11	62.11	1.00	1.63	3.75	6.42			
United States	1.85	2.48	2.14	2.14	2.58	3.26	3.32	3.59	4.77	8.07	7.08	7.67	0.59	8.32	-0.40	-4.96			
Total Foreign	38.79	37.70	39.78	39.82	1.36	1.33	1.36	1.37	52.85	50.29	54.03	54.44	0.41	0.76	4.15	8.25			
Africa																			
Nigeria	5.70	5.70	6.10	6.10	1.19	1.12	1.18	1.18	6.81	6.40	7.20	7.20	0.00	0.00	0.80	12.50			
Ethiopia	1.55	1.48	1.65	1.65	2.67	2.71	2.48	2.48	4.14	4.01	4.10	4.10	0.00	0.00	0.09	2.24			
Sudan	7.24	5.99	7.50	7.50	0.72	0.51	0.67	0.67	5.25	3.06	5.00	5.00	0.00	0.00	1.95	63.67			
Burkina Faso	1.96	1.90	1.90	1.90	1.03	0.93	1.00	1.00	2.01	1.77	1.90	1.90	0.00	0.00	0.13	7.22			
Mali	1.64	1.50	1.50	1.50	0.97	1.02	1.00	1.00	1.58	1.53	1.50	1.50	0.00	0.00	-0.03	-1.83			
Niger	3.79	3.70	3.70	3.70	0.55	0.46	0.51	0.51	2.10	1.70	1.90	1.90	0.00	0.00	0.20	11.76			
Cameroon	0.74	0.74	0.74	0.74	1.62	1.62	1.62	1.62	1.20	1.20	1.20	1.20	0.00	0.00	0.00	0.00			
Tanzania	1.00	1.00	1.00	1.00	1.00	1.00	1.00	1.00	1.00	1.00	1.00	1.00	0.00	0.00	0.00	0.00			
Egypt	0.15	0.15	0.15	0.15	5.00	5.20	5.27	5.27	0.75	0.78	0.79	0.79	0.00	0.00	0.01	1.28			
Uganda	0.25	0.25	0.25	0.25	0.90	0.90	0.90	0.90	0.23	0.23	0.23	0.23	0.00	0.00	0.00	0.00			
Ghana	0.31	0.31	0.31	0.31	1.29	1.42	1.29	1.29	0.40	0.44	0.40	0.40	0.00	0.00	-0.04	-8.88			
Mozambique	0.29	0.27	0.28	0.28	0.51	0.55	0.33	0.33	0.15	0.15	0.09	0.09	0.00	0.00	-0.06	-40.00			
South Africa	0.03	0.04	0.04	0.04	2.76	2.25	3.25	3.25	0.09	0.09	0.13	0.13	0.00	0.00	0.04	44.44			
Mexico	1.40	1.23	1.32	1.32	3.50	3.48	3.41	3.41	4.89	4.28	4.50	4.50	0.00	0.00	0.22	5.14			
South America																			
Argentina	0.50	0.60	0.70	0.70	3.22	4.17	4.29	4.29	1.61	2.50	3.00	3.00	0.00	0.00	0.50	20.00			
Brazil	1.42	1.56	1.60	1.60	3.38	3.14	3.13	3.13	4.79	4.91	5.00	5.00	0.00	0.00	0.09	1.85			
South Asia																			
India	3.54	4.10	4.00	4.00	1.08	1.07	1.10	1.10	3.81	4.40	4.40	4.40	0.00	0.00	0.00	0.00			
Pakistan	0.22	0.22	0.22	0.22	0.63	0.63	0.63	0.63	0.14	0.14	0.14	0.14	0.00	0.00	0.00	0.00			
China	0.68	0.63	0.63	0.63	4.58	4.76	4.76	4.76	3.09	3.00	3.00	3.00	0.00	0.00	0.00	0.00			
Australia	0.69	0.60	0.60	0.60	3.84	3.67	3.67	4.00	2.64	2.20	2.20	2.40	0.20	9.09	0.20	9.09			
European Union	0.12	0.16	0.17	0.21	4.14	5.13	5.00	5.05	0.51	0.80	0.85	1.06	0.21	24.71	0.26	32.33			
Others	5.58	5.58	5.43	5.43	1.01	1.02	1.01	1.01	5.66	5.71	5.51	5.51	0.00	0.00	-0.21	-3.62			

World and Selected Countries and Regions

Table 09 Rice Area, Yield, and Production
World and Selected Countries and Regions

Country / Region	Area (Million hectares)				Yield (Metric tons per hectare)				Production (Million metric tons)				Change in Production			
	Prel.		2024/25 Proj.		Prel.		2024/25 Proj.		Prel.		2024/25 Proj.		From last month		From last year	
	2022/23	2023/24	Aug	Sep	2022/23	2023/24	Aug	Sep	2022/23	2023/24	Aug	Sep	MMT	Percent	MMT	Percent
World	165.49	165.55	166.88	167.14	4.66	4.70	4.72	4.71	516.02	520.65	527.71	527.31	-0.40	-0.08	6.66	1.28
United States	0.88	1.16	1.17	1.17	8.28	8.57	8.54	8.50	5.08	6.93	7.01	6.98	-0.03	-0.46	0.05	0.66
Total Foreign	164.61	164.39	165.71	165.96	4.64	4.67	4.70	4.69	510.94	513.72	520.70	520.34	-0.37	-0.07	6.62	1.29
East Asia																
China	29.45	28.95	29.00	29.00	7.08	7.14	7.19	7.19	145.95	144.62	146.00	146.00	0.00	0.00	1.38	0.95
Japan	1.50	1.46	1.44	1.44	6.86	6.84	6.87	6.87	7.48	7.27	7.20	7.20	0.00	0.00	-0.07	-0.99
Korea, South	0.73	0.71	0.69	0.69	6.87	6.92	6.86	6.86	3.76	3.70	3.60	3.60	0.00	0.00	-0.11	-2.89
Korea, North	0.54	0.54	0.54	0.54	3.87	4.18	4.18	4.18	1.36	1.47	1.47	1.47	0.00	0.00	0.00	0.00
South Asia																
India	47.83	47.60	48.00	48.50	4.26	4.32	4.31	4.30	135.76	137.00	138.00	139.00	1.00	0.72	2.00	1.46
Bangladesh	11.60	11.75	11.90	11.70	4.70	4.72	4.79	4.78	36.35	37.00	38.00	37.30	-0.70	-1.84	0.30	0.81
Pakistan	2.98	3.64	3.80	3.80	3.69	4.07	3.95	3.95	7.32	9.87	10.00	10.00	0.00	0.00	0.13	1.33
Nepal	1.45	1.45	1.45	1.45	3.79	3.66	3.72	3.72	3.65	3.53	3.60	3.60	0.00	0.00	0.07	1.98
Sri Lanka	1.15	1.16	1.15	1.15	3.61	4.22	4.48	4.48	2.83	3.33	3.50	3.50	0.00	0.00	0.17	5.04
Southeast Asia																
Indonesia	11.30	11.00	11.20	11.20	4.72	4.73	4.78	4.78	33.90	33.02	34.00	34.00	0.00	0.00	0.98	2.97
Vietnam	7.12	7.00	6.95	6.95	6.10	6.09	6.10	6.10	27.14	26.63	26.50	26.50	0.00	0.00	-0.13	-0.47
Thailand	11.07	10.65	10.70	10.70	2.86	2.85	2.85	2.85	20.91	20.00	20.10	20.10	0.00	0.00	0.10	0.50
Burma	6.80	6.80	6.80	6.80	2.71	2.73	2.78	2.78	11.80	11.90	12.10	12.10	0.00	0.00	0.20	1.68
Philippines	4.85	4.74	4.85	4.85	4.13	4.12	4.16	4.16	12.63	12.33	12.70	12.70	0.00	0.00	0.38	3.04
Cambodia	3.47	3.58	3.64	3.64	3.29	3.29	3.32	3.32	6.96	7.17	7.38	7.38	0.00	0.00	0.20	2.83
Laos	0.96	0.95	0.97	0.97	3.23	3.21	3.22	3.22	1.95	1.92	1.97	1.97	0.00	0.00	0.05	2.60
Malaysia	0.66	0.65	0.66	0.66	3.99	3.86	4.08	4.08	1.70	1.62	1.75	1.75	0.00	0.00	0.13	8.02
South America																
Brazil	1.48	1.55	1.60	1.60	6.78	6.85	6.89	6.89	6.82	7.23	7.50	7.50	0.00	0.00	0.28	3.81
Peru	0.42	0.43	0.43	0.43	8.34	8.52	8.60	8.60	2.40	2.50	2.55	2.55	0.00	0.00	0.05	2.00
Africa																
Egypt	0.60	0.63	0.60	0.60	8.70	8.70	8.70	8.70	3.60	3.78	3.60	3.60	0.00	0.00	-0.18	-4.76
Madagascar	1.60	1.60	1.60	1.60	2.87	2.75	2.75	2.75	2.93	2.82	2.82	2.82	0.00	0.00	0.00	0.00
Nigeria	3.50	3.60	3.50	3.50	2.43	2.47	2.49	2.37	5.36	5.61	5.48	5.23	-0.25	-4.60	-0.38	-6.74
European Union	0.33	0.36	0.40	0.40	6.11	6.05	6.78	6.78	1.29	1.38	1.72	1.72	0.00	0.00	0.34	24.35
Iran	0.57	0.57	0.57	0.57	5.32	5.30	5.32	5.32	2.00	2.00	2.00	2.00	0.00	0.00	0.01	0.25
Others	12.67	13.04	13.27	13.22	3.00	3.03	3.10	3.07	25.09	26.04	27.18	26.76	-0.41	-1.52	0.73	2.79

Yield is on a rough basis, before the milling process. Production is on a milled basis, after the milling process.

Table 10 Total Oilseed Area, Yield, and Production
World and Selected Countries and Regions

Country / Region	Area (Million hectares)				Yield (Metric tons per hectare)				Production (Million metric tons)				Change in Production			
	2022/23	Prel.	2024/25 Proj.		2022/23	Prel.	2024/25 Proj.		2022/23	Prel.	2024/25 Proj.		From last month		From last year	
		2023/24	Aug	Sep		2023/24	Aug	Sep		2023/24	Aug	Sep	MMT	Percent	MMT	Percent
World Total	--	--	--	--	--	--	--	--	638.29	657.86	690.54	687.42	-3.13	-0.45	29.56	4.49
Total Foreign	--	--	--	--	--	--	--	--	512.54	535.62	555.54	552.70	-2.84	-0.51	17.09	3.19
Oilseed, Copra	--	--	--	--	--	--	--	--	6.00	6.21	5.81	5.81	0.00	0.00	-0.40	-6.50
Oilseed, Palm Kernel	--	--	--	--	--	--	--	--	20.06	20.52	20.55	20.70	0.14	0.69	0.17	0.83
Major Oilseeds	267.46	270.91	276.38	275.99	2.29	2.33	2.40	2.39	612.23	631.13	664.18	660.91	-3.27	-0.49	29.79	4.72
United States	39.91	38.03	40.53	40.53	3.15	3.21	3.33	3.32	125.75	122.24	135.00	134.71	-0.29	-0.21	12.47	10.20
Foreign Oilseeds	227.55	232.89	235.85	235.46	2.14	2.19	2.24	2.23	486.47	508.88	529.18	526.20	-2.98	-0.56	17.32	3.40
South America	71.26	74.22	76.58	76.73	3.01	3.12	3.28	3.28	214.77	231.74	251.01	251.51	0.50	0.20	19.76	8.53
Brazil	46.46	47.78	49.56	49.56	3.59	3.32	3.54	3.54	166.77	158.64	175.53	175.53	0.00	0.00	16.89	10.65
Argentina	17.76	19.21	19.70	19.70	1.77	2.82	2.88	2.88	31.45	54.11	56.76	56.76	0.00	0.00	2.65	4.89
Paraguay	3.79	3.90	3.87	4.02	2.77	2.88	2.83	2.85	10.47	11.22	10.94	11.44	0.50	4.57	0.23	2.02
Bolivia	1.83	1.84	1.86	1.86	2.42	2.16	2.17	2.17	4.43	3.98	4.04	4.04	0.00	0.00	0.06	1.51
Uruguay	1.28	1.37	1.46	1.46	1.00	2.52	2.31	2.31	1.28	3.45	3.37	3.37	0.00	0.00	-0.08	-2.21
China	25.90	26.79	26.20	26.20	2.62	2.58	2.59	2.59	67.94	69.08	67.83	67.95	0.12	0.17	-1.13	-1.64
South Asia	43.63	44.21	44.36	44.06	1.04	1.03	1.07	1.07	45.22	45.59	47.51	47.17	-0.34	-0.72	1.58	3.45
India	40.19	40.30	40.48	40.28	1.03	1.01	1.05	1.05	41.29	40.54	42.51	42.30	-0.21	-0.50	1.76	4.35
Pakistan	2.51	2.99	2.61	2.51	1.06	1.27	1.25	1.25	2.67	3.81	3.27	3.14	-0.13	-3.97	-0.67	-17.62
European Union	12.32	12.32	12.17	12.01	2.61	2.70	2.67	2.54	32.13	33.31	32.46	30.46	-2.00	-6.16	-2.85	-8.55
United Kingdom	0.37	0.39	0.28	0.28	3.73	3.11	3.13	3.13	1.36	1.22	0.88	0.88	0.00	0.00	-0.34	-28.04
Former Soviet Union - 12	27.85	29.15	30.98	30.98	1.87	2.03	1.89	1.85	52.07	59.30	58.68	57.39	-1.29	-2.20	-1.91	-3.22
Russia	14.74	14.85	16.00	16.00	1.80	1.89	1.78	1.78	26.55	28.10	28.40	28.40	0.00	0.00	0.30	1.07
Ukraine	8.75	10.00	10.45	10.45	2.26	2.55	2.30	2.20	19.80	25.45	24.00	23.00	-1.00	-4.17	-2.45	-9.63
Uzbekistan	1.07	1.05	1.02	1.02	1.24	1.15	1.18	1.22	1.33	1.21	1.21	1.25	0.04	3.23	0.04	3.23
Canada	10.75	11.16	11.12	11.12	2.37	2.35	2.42	2.45	25.48	26.27	26.95	27.24	0.29	1.06	0.97	3.70
Africa	24.48	24.58	24.33	24.24	1.05	0.98	1.06	1.06	25.73	24.01	25.89	25.72	-0.17	-0.65	1.71	7.12
Nigeria	4.87	4.87	5.07	5.07	1.15	1.15	1.13	1.13	5.61	5.60	5.75	5.75	0.00	0.00	0.15	2.68
South Africa	1.88	1.87	1.94	1.95	2.02	1.48	1.99	1.98	3.80	2.77	3.88	3.88	0.00	0.00	1.11	40.18
Tanzania	1.36	1.47	1.47	1.44	0.91	0.89	0.87	0.87	1.23	1.31	1.28	1.25	-0.02	-1.80	-0.05	-4.13
Southeast Asia	3.11	3.07	3.04	3.04	1.38	1.38	1.39	1.39	4.30	4.25	4.24	4.24	0.00	0.00	-0.02	-0.38
Burma	1.98	1.97	1.98	1.98	1.22	1.24	1.26	1.26	2.40	2.44	2.50	2.50	0.00	0.00	0.06	2.25
Indonesia	0.87	0.84	0.81	0.81	1.52	1.49	1.48	1.48	1.32	1.26	1.20	1.20	0.00	0.00	-0.06	-4.38
Australia	4.61	4.04	3.80	3.80	2.13	1.81	1.80	1.80	9.82	7.30	6.84	6.84	0.00	0.00	-0.46	-6.34
Turkey	1.47	1.27	1.30	1.30	2.71	2.43	2.58	2.58	3.98	3.09	3.36	3.36	0.00	0.00	0.28	8.95
Others	1.81	1.70	1.69	1.70	2.03	2.20	2.10	2.03	3.67	3.73	3.55	3.46	-0.09	-2.42	-0.26	-7.09

World Total and Total Foreign: (Major Oilseeds plus copra and palm kernel) Major Oilseeds: (soybeans, sunflowerseeds, peanuts(inshell), cottonseed and rapeseed)

Table 11 Soybean Area, Yield, and Production

Country / Region	Area (Million hectares)				Yield (Metric tons per hectare)				Production (Million metric tons)				Change in Production			
	Prel.		2024/25 Proj.		Prel.		2024/25 Proj.		Prel.		2024/25 Proj.		From last month		From last year	
	2022/23	2023/24	Aug	Sep	2022/23	2023/24	Aug	Sep	2022/23	2023/24	Aug	Sep	MMT	Percent	MMT	Percent
World	137.10	139.78	145.72	145.82	2.76	2.82	2.94	2.94	378.70	394.75	428.73	429.20	0.48	0.11	34.45	8.73
United States	34.87	33.33	34.91	34.91	3.33	3.40	3.58	3.57	116.22	113.34	124.90	124.81	-0.09	-0.07	11.46	10.11
Total Foreign	102.22	106.45	110.80	110.90	2.57	2.64	2.74	2.74	262.48	281.41	303.83	304.39	0.57	0.19	22.98	8.17
South America																
Brazil	44.60	45.80	47.30	47.30	3.63	3.34	3.57	3.57	162.00	153.00	169.00	169.00	0.00	0.00	16.00	10.46
Argentina	14.40	16.30	16.90	16.90	1.74	2.95	3.02	3.02	25.00	48.10	51.00	51.00	0.00	0.00	2.90	6.03
Paraguay	3.65	3.75	3.70	3.85	2.81	2.93	2.89	2.91	10.25	11.00	10.70	11.20	0.50	4.67	0.20	1.82
Bolivia	1.60	1.60	1.61	1.61	2.57	2.28	2.30	2.30	4.11	3.65	3.70	3.70	0.00	0.00	0.05	1.37
Uruguay	0.93	1.22	1.30	1.30	0.75	2.62	2.38	2.38	0.70	3.20	3.10	3.10	0.00	0.00	-0.10	-3.13
East Asia																
China	10.24	10.47	10.50	10.50	1.98	1.99	1.97	1.97	20.28	20.84	20.70	20.70	0.00	0.00	-0.14	-0.67
Korea, South	0.06	0.07	0.07	0.07	2.03	2.07	2.06	2.06	0.13	0.14	0.14	0.14	0.00	0.00	0.00	0.71
Korea, North	0.16	0.16	0.16	0.16	1.15	1.15	1.15	1.15	0.18	0.18	0.18	0.18	0.00	0.00	0.00	0.00
Japan	0.15	0.16	0.16	0.16	1.60	1.59	1.64	1.64	0.24	0.25	0.26	0.26	0.00	0.00	0.01	4.86
India	13.08	13.20	13.50	13.50	0.95	0.90	0.95	0.95	12.41	11.88	12.80	12.80	0.00	0.00	0.93	7.79
Canada	2.12	2.26	2.30	2.30	3.09	3.09	3.00	3.13	6.54	6.98	6.90	7.20	0.30	4.35	0.22	3.14
Former Soviet Union - 12																
Russia	3.36	3.50	4.10	4.10	1.79	1.94	1.78	1.78	6.00	6.80	7.30	7.30	0.00	0.00	0.50	7.35
Ukraine	1.82	2.00	2.90	2.90	2.25	2.60	2.34	2.34	4.10	5.20	6.80	6.80	0.00	0.00	1.60	30.77
European Union	1.12	1.03	1.11	1.09	2.34	2.90	2.68	2.65	2.61	2.99	2.98	2.88	-0.10	-3.36	-0.11	-3.75
Southeast Asia																
Indonesia	0.33	0.32	0.31	0.31	1.18	1.17	1.16	1.16	0.39	0.38	0.36	0.36	0.00	0.00	-0.02	-4.00
Vietnam	0.03	0.03	0.03	0.03	1.60	1.61	1.62	1.62	0.05	0.05	0.04	0.04	0.00	0.00	0.00	-6.67
Thailand	0.03	0.03	0.03	0.03	1.63	1.63	1.63	1.63	0.05	0.05	0.05	0.05	0.00	0.00	0.00	0.00
Burma	0.13	0.12	0.12	0.12	1.04	1.04	1.04	1.04	0.13	0.13	0.12	0.12	0.00	0.00	-0.01	-4.00
Serbia	0.24	0.24	0.24	0.24	1.70	2.77	2.30	2.00	0.40	0.65	0.54	0.47	-0.07	-12.96	-0.18	-27.69
Mexico	0.12	0.09	0.10	0.10	1.52	2.06	1.55	1.55	0.18	0.19	0.16	0.16	0.00	0.00	-0.03	-16.22
Africa																
South Africa	1.15	1.15	1.20	1.20	2.41	1.55	2.33	2.33	2.77	1.78	2.80	2.80	0.00	0.00	1.02	57.30
Nigeria	1.20	1.15	1.35	1.35	0.98	1.00	0.96	0.96	1.18	1.15	1.30	1.30	0.00	0.00	0.15	13.04
Zambia	0.38	0.38	0.38	0.38	1.27	1.27	1.27	1.27	0.48	0.48	0.48	0.48	0.00	0.00	0.00	0.00
Uganda	0.17	0.17	0.17	0.17	1.18	1.18	1.18	1.18	0.20	0.20	0.20	0.20	0.00	0.00	0.00	0.00
Middle East																
Iran	0.08	0.07	0.07	0.07	2.27	2.36	2.43	2.43	0.17	0.17	0.17	0.17	0.00	0.00	0.01	3.03
Turkey	0.04	0.03	0.04	0.04	4.14	4.12	4.29	4.29	0.15	0.14	0.15	0.15	0.00	0.00	0.01	7.14
Others	1.07	1.17	1.18	1.16	1.68	1.60	1.62	1.59	1.79	1.87	1.91	1.84	-0.07	-3.41	-0.02	-1.29

World and Selected Countries and Regions

Table 12 Cottonseed Area, Yield, and Production

Country / Region	Area (Million hectares)				Yield (Metric tons per hectare)				Production (Million metric tons)				Change in Production			
	Prel.		2024/25 Proj.		Prel.		2024/25 Proj.		Prel.		2024/25 Proj.		From last month		From last year	
	2022/23	2023/24	Aug	Sep	2022/23	2023/24	Aug	Sep	2022/23	2023/24	Aug	Sep	MMT	Percent	MMT	Percent
World	31.20	30.65	30.84	30.49	1.36	1.36	1.38	1.38	42.44	41.57	42.57	42.17	-0.40	-0.94	0.60	1.45
United States	2.95	2.61	3.49	3.49	1.36	1.27	1.20	1.15	4.01	3.31	4.18	4.01	-0.16	-3.93	0.71	21.42
Total Foreign	28.25	28.05	27.35	27.00	1.36	1.36	1.40	1.41	38.43	38.26	38.39	38.15	-0.24	-0.61	-0.11	-0.28
South Asia																
India	12.93	12.70	12.00	11.80	0.86	0.86	0.87	0.86	11.17	10.95	10.40	10.19	-0.21	-2.04	-0.76	-6.98
Pakistan	1.80	2.40	2.10	2.00	0.94	1.26	1.24	1.23	1.69	3.03	2.60	2.47	-0.13	-5.00	-0.56	-18.57
China	3.10	2.85	2.85	2.85	3.89	3.76	3.78	3.82	12.05	10.72	10.78	10.90	0.12	1.09	0.18	1.65
Former Soviet Union - 12																
Uzbekistan	1.05	1.03	1.00	1.00	1.19	1.10	1.14	1.18	1.25	1.14	1.14	1.18	0.04	3.43	0.04	3.43
Turkmenistan	0.55	0.55	0.55	0.55	0.64	0.64	0.64	0.64	0.35	0.35	0.35	0.35	0.00	0.00	0.00	0.00
Tajikistan	0.17	0.19	0.18	0.18	1.11	1.16	1.15	1.08	0.19	0.22	0.21	0.20	-0.01	-5.80	-0.03	-11.76
Kazakhstan	0.13	0.12	0.12	0.12	1.05	1.00	0.94	0.98	0.13	0.12	0.11	0.12	0.00	3.54	0.00	0.00
South America																
Brazil	1.60	1.66	1.94	1.94	2.43	2.91	2.86	2.86	3.89	4.84	5.54	5.54	0.00	0.00	0.71	14.62
Argentina	0.51	0.61	0.53	0.53	0.84	0.94	1.09	1.09	0.43	0.57	0.57	0.57	0.00	0.00	0.00	0.00
Middle East																
Turkey	0.56	0.44	0.49	0.49	2.88	2.38	2.69	2.69	1.60	1.05	1.31	1.31	0.00	0.00	0.26	24.98
Syria	0.03	0.03	0.03	0.03	2.23	2.23	2.23	2.23	0.07	0.07	0.07	0.07	0.00	0.00	0.00	0.00
Iran	0.12	0.10	0.10	0.10	1.52	1.18	1.35	1.35	0.18	0.12	0.14	0.14	0.00	0.00	0.02	14.41
Australia	0.65	0.51	0.55	0.55	2.24	2.48	2.28	2.28	1.45	1.25	1.25	1.25	0.00	0.00	0.00	0.00
European Union	0.31	0.25	0.26	0.26	1.70	1.33	1.70	1.70	0.53	0.34	0.44	0.44	0.00	0.00	0.10	29.29
Africa																
Burkina Faso	0.62	0.46	0.47	0.47	0.35	0.46	0.42	0.42	0.21	0.21	0.20	0.20	0.00	0.00	-0.01	-5.69
Mali	0.60	0.71	0.72	0.70	0.35	0.53	0.53	0.48	0.21	0.38	0.38	0.34	-0.04	-11.26	-0.04	-9.60
Cameroon	0.23	0.24	0.25	0.24	1.29	1.54	1.35	1.38	0.30	0.37	0.33	0.33	-0.01	-1.52	-0.05	-12.16
Cote d'Ivoire	0.41	0.40	0.37	0.37	0.29	0.44	0.53	0.53	0.12	0.17	0.20	0.20	0.00	0.00	0.02	12.07
Benin	0.57	0.51	0.51	0.55	0.64	0.73	0.68	0.70	0.36	0.37	0.35	0.38	0.04	10.14	0.01	1.88
Tanzania	0.36	0.47	0.47	0.44	0.37	0.44	0.38	0.35	0.13	0.21	0.18	0.15	-0.02	-13.14	-0.05	-26.21
Egypt	0.14	0.10	0.13	0.13	0.92	0.96	0.93	0.93	0.13	0.10	0.12	0.12	0.00	0.00	0.03	26.04
Nigeria	0.27	0.27	0.27	0.27	0.56	0.56	0.56	0.56	0.15	0.15	0.15	0.15	0.00	0.00	0.00	0.00
Uganda	0.10	0.10	0.10	0.10	1.49	1.49	1.49	1.49	0.15	0.15	0.15	0.15	0.00	0.00	0.00	0.00
Zimbabwe	0.24	0.24	0.24	0.24	0.34	0.34	0.34	0.34	0.08	0.08	0.08	0.08	0.00	0.00	0.00	0.00
Sudan	0.20	0.20	0.20	0.20	1.53	1.53	1.53	1.53	0.31	0.31	0.31	0.31	0.00	0.00	0.00	0.00
Mexico	0.20	0.13	0.11	0.12	2.70	2.25	2.48	2.35	0.54	0.30	0.27	0.28	0.01	3.30	-0.02	-5.05
Burma	0.19	0.18	0.19	0.19	1.26	1.24	1.24	1.24	0.23	0.23	0.24	0.24	0.00	0.00	0.01	4.42
Others	0.62	0.60	0.64	0.60	0.84	0.80	0.86	0.88	0.53	0.49	0.55	0.53	-0.02	-2.93	0.05	9.26

World and Selected Countries and Regions

Table 13 Peanut Area, Yield, and Production

Country / Region	Area (Million hectares)				Yield (Metric tons per hectare)				Production (Million metric tons)				Change in Production			
	Prel.		2024/25 Proj.		Prel.		2024/25 Proj.		Prel.		2024/25 Proj.		From last month		From last year	
	2022/23	2023/24	Aug	Sep	2022/23	2023/24	Aug	Sep	2022/23	2023/24	Aug	Sep	MMT	Percent	MMT	Percent
World	28.93	29.51	29.37	29.36	1.71	1.68	1.75	1.75	49.41	49.52	51.52	51.44	-0.08	-0.16	1.92	3.87
United States	0.56	0.64	0.71	0.71	4.50	4.19	4.36	4.30	2.51	2.67	3.08	3.04	-0.03	-1.07	0.37	13.92
Total Foreign	28.37	28.87	28.67	28.65	1.65	1.62	1.69	1.69	46.89	46.85	48.44	48.39	-0.05	-0.10	1.54	3.30
China	4.68	4.98	4.85	4.85	3.91	3.86	3.92	3.92	18.33	19.22	19.00	19.00	0.00	0.00	-0.22	-1.13
Africa																
Nigeria	3.40	3.45	3.45	3.45	1.26	1.25	1.25	1.25	4.28	4.30	4.30	4.30	0.00	0.00	0.00	0.00
Sudan	3.07	3.01	2.50	2.50	0.86	0.46	0.80	0.80	2.64	1.39	2.00	2.00	0.00	0.00	0.61	44.30
Senegal	1.23	1.25	1.25	1.25	1.23	1.38	1.36	1.36	1.50	1.73	1.70	1.70	0.00	0.00	-0.03	-1.62
Cameroon	0.43	0.43	0.43	0.43	1.40	1.40	1.40	1.40	0.60	0.60	0.60	0.60	0.00	0.00	0.00	0.00
Ghana	0.37	0.37	0.37	0.35	1.65	1.62	1.62	1.57	0.61	0.60	0.60	0.55	-0.05	-8.33	-0.05	-8.33
Chad	0.76	0.76	0.76	0.76	1.10	1.09	1.09	1.09	0.83	0.83	0.83	0.83	0.00	0.00	0.00	0.00
Malawi	0.40	0.40	0.40	0.40	0.88	0.88	0.88	0.88	0.35	0.35	0.35	0.35	0.00	0.00	0.00	0.00
Congo (Kinshasa)	0.53	0.53	0.53	0.53	0.91	0.91	0.91	0.91	0.48	0.48	0.48	0.48	0.00	0.00	0.00	0.00
Niger	0.97	0.92	0.92	0.92	0.69	0.65	0.65	0.65	0.67	0.60	0.60	0.60	0.00	0.00	0.00	0.00
Mali	0.43	0.43	0.43	0.43	1.04	1.00	1.00	1.00	0.44	0.43	0.43	0.43	0.00	0.00	0.00	0.00
Uganda	0.35	0.35	0.35	0.35	0.57	0.57	0.57	0.57	0.20	0.20	0.20	0.20	0.00	0.00	0.00	0.00
Burkina Faso	0.63	0.64	0.64	0.64	0.89	0.90	0.90	0.90	0.56	0.58	0.58	0.58	0.00	0.00	0.00	0.00
Guinea	0.90	0.90	0.90	0.90	1.14	1.11	1.11	1.11	1.03	1.00	1.00	1.00	0.00	0.00	0.00	0.00
Egypt	0.06	0.06	0.06	0.06	3.20	3.20	3.20	3.20	0.21	0.21	0.21	0.21	0.00	0.00	0.00	0.00
Central African Republic	0.13	0.13	0.13	0.13	1.15	1.15	1.15	1.15	0.15	0.15	0.15	0.15	0.00	0.00	0.00	0.00
South Africa	0.03	0.04	0.04	0.04	2.29	1.75	2.00	2.00	0.07	0.07	0.08	0.08	0.00	0.00	0.01	14.29
Mozambique	0.38	0.38	0.38	0.38	0.34	0.34	0.34	0.34	0.13	0.13	0.13	0.13	0.00	0.00	0.00	0.00
Cote d'Ivoire	0.17	0.17	0.17	0.17	1.47	1.45	1.45	1.45	0.24	0.24	0.24	0.24	0.00	0.00	0.00	0.00
Benin	0.16	0.24	0.18	0.18	1.03	0.74	0.97	0.97	0.16	0.18	0.18	0.18	0.00	0.00	0.00	-2.23
South Asia																
India	4.96	5.00	5.50	5.50	1.27	1.20	1.29	1.29	6.30	6.00	7.10	7.10	0.00	0.00	1.10	18.33
Pakistan	0.13	0.13	0.13	0.13	0.88	0.88	0.88	0.88	0.12	0.12	0.12	0.12	0.00	0.00	0.00	0.00
Southeast Asia																
Indonesia	0.54	0.52	0.50	0.50	1.72	1.69	1.68	1.68	0.93	0.88	0.84	0.84	0.00	0.00	-0.04	-4.55
Burma	1.07	1.07	1.08	1.08	1.55	1.59	1.63	1.63	1.65	1.70	1.75	1.75	0.00	0.00	0.05	2.94
Vietnam	0.15	0.15	0.14	0.14	2.63	2.62	2.64	2.64	0.40	0.38	0.37	0.37	0.00	0.00	-0.01	-3.39
Thailand	0.02	0.02	0.02	0.02	1.67	1.67	1.67	1.67	0.04	0.04	0.04	0.04	0.00	0.00	0.00	0.00
South America																
Argentina	0.37	0.42	0.40	0.40	2.59	3.57	3.38	3.38	0.96	1.50	1.35	1.35	0.00	0.00	-0.15	-10.00
Brazil	0.20	0.26	0.26	0.26	3.95	2.88	3.46	3.46	0.79	0.73	0.90	0.90	0.00	0.00	0.17	22.62
Mexico	0.05	0.05	0.05	0.05	1.76	1.74	1.70	1.70	0.09	0.08	0.09	0.09	0.00	0.00	0.01	6.25
Others	1.80	1.81	1.85	1.85	1.18	1.19	1.21	1.21	2.13	2.15	2.25	2.25	0.00	0.00	0.10	4.70

Table 14 Sunflowerseed Area, Yield, and Production

Country / Region	Area (Million hectares)				Yield (Metric tons per hectare)				Production (Million metric tons)				Change in Production			
	2022/23	Prel.		2024/25 Proj.		2022/23	Prel.		2024/25 Proj.		2022/23	Prel.		2024/25 Proj.		
		2023/24	Aug	Sep	2023/24		Aug	Sep	2023/24	Aug		Sep	MMT	Percent	MMT	Percent
World	28.30	27.95	27.79	27.75	1.87	2.00	1.89	1.82	52.78	55.93	52.54	50.55	-1.99	-3.78	-5.38	-9.62
United States	0.65	0.51	0.35	0.35	1.97	2.00	1.99	1.99	1.27	1.03	0.70	0.70	0.00	0.00	-0.33	-32.23
Total Foreign	27.65	27.44	27.44	27.40	1.86	2.00	1.89	1.82	51.51	54.90	51.85	49.86	-1.99	-3.83	-5.05	-9.19
Former Soviet Union - 12																
Russia	9.11	9.30	9.30	9.30	1.78	1.84	1.72	1.72	16.25	17.10	16.00	16.00	0.00	0.00	-1.10	-6.43
Ukraine	5.70	6.40	6.20	6.20	2.14	2.42	2.18	2.02	12.20	15.50	13.50	12.50	-1.00	-7.41	-3.00	-19.35
Kazakhstan	1.09	1.13	1.25	1.25	1.20	1.10	1.24	1.12	1.30	1.24	1.55	1.40	-0.15	-9.68	0.16	13.27
European Union	4.97	4.80	4.95	4.92	1.89	2.08	2.05	1.93	9.39	10.01	10.15	9.50	-0.65	-6.40	-0.51	-5.05
South America																
Argentina	2.45	1.84	1.85	1.85	2.05	2.11	2.05	2.05	5.02	3.90	3.80	3.80	0.00	0.00	-0.10	-2.44
Uruguay	0.01	0.01	0.01	0.01	0.91	0.92	1.00	1.00	0.01	0.01	0.01	0.01	0.00	0.00	0.00	-9.09
Bolivia	0.23	0.24	0.25	0.25	1.39	1.38	1.36	1.36	0.32	0.33	0.34	0.34	0.00	0.00	0.01	3.03
Brazil	0.06	0.06	0.06	0.06	1.52	1.22	1.50	1.50	0.09	0.07	0.09	0.09	0.00	0.00	0.02	23.29
Paraguay	0.03	0.02	0.03	0.03	1.64	1.63	1.60	1.60	0.04	0.04	0.04	0.04	0.00	0.00	0.00	2.56
China	0.62	0.70	0.60	0.60	2.79	2.83	2.92	2.92	1.74	1.98	1.75	1.75	0.00	0.00	-0.23	-11.75
South Asia																
India	0.36	0.15	0.18	0.18	0.59	0.75	0.63	0.63	0.22	0.11	0.11	0.11	0.00	0.00	0.00	0.89
Pakistan	0.07	0.08	0.08	0.08	1.72	1.35	1.31	1.31	0.12	0.11	0.11	0.11	0.00	0.00	0.00	-2.78
Middle East																
Turkey	0.79	0.70	0.69	0.69	2.41	2.21	2.25	2.25	1.90	1.55	1.55	1.55	0.00	0.00	0.00	0.00
Iran	0.04	0.04	0.04	0.04	1.02	1.05	1.07	1.07	0.04	0.04	0.05	0.05	0.00	0.00	0.00	4.65
Israel	0.00	0.00	0.00	0.00	2.00	4.00	4.00	4.00	0.00	0.00	0.00	0.00	0.00	0.00	0.00	0.00
Africa																
Egypt	0.01	0.01	0.01	0.01	2.75	2.63	2.75	2.75	0.02	0.02	0.02	0.02	0.00	0.00	0.00	4.76
Morocco	0.03	0.02	0.02	0.02	1.11	1.27	1.17	1.17	0.03	0.03	0.03	0.03	0.00	0.00	0.00	0.00
South Africa	0.56	0.53	0.54	0.54	1.29	1.23	1.30	1.30	0.72	0.65	0.70	0.70	0.00	0.00	0.05	7.69
Burma	0.60	0.60	0.60	0.60	0.65	0.65	0.65	0.65	0.39	0.39	0.39	0.39	0.00	0.00	0.00	0.00
Canada	0.04	0.04	0.02	0.02	2.21	2.30	2.17	2.06	0.08	0.09	0.05	0.04	-0.01	-26.00	-0.06	-59.78
Australia	0.03	0.03	0.02	0.02	1.48	1.28	1.50	1.50	0.04	0.03	0.03	0.03	0.00	0.00	0.00	-6.25
Others	0.86	0.73	0.73	0.73	1.83	2.33	2.15	1.91	1.58	1.70	1.58	1.40	-0.18	-11.09	-0.30	-17.57

World and Selected Countries and Regions

Table 15 Rapeseed Area, Yield, and Production

Country / Region	Area (Million hectares)				Yield (Metric tons per hectare)				Production (Million metric tons)				Change in Production			
	Prel.		2024/25 Proj.		Prel.		2024/25 Proj.		Prel.		2024/25 Proj.		From last month		From last year	
	2022/23	2023/24	Aug	Sep	2022/23	2023/24	Aug	Sep	2022/23	2023/24	Aug	Sep	MMT	Percent	MMT	Percent
World	41.95	43.03	42.67	42.58	2.12	2.08	2.08	2.06	88.91	89.35	88.83	87.56	-1.27	-1.43	-1.80	-2.01
United States	0.88	0.94	1.07	1.07	1.98	2.01	2.02	2.02	1.74	1.90	2.15	2.15	0.00	0.00	0.26	13.56
Total Foreign	41.07	42.08	41.60	41.51	2.12	2.08	2.08	2.06	87.17	87.46	86.68	85.41	-1.27	-1.47	-2.05	-2.35
European Union	5.92	6.23	5.85	5.75	3.31	3.21	3.23	3.07	19.61	19.98	18.90	17.65	-1.25	-6.61	-2.33	-11.66
United Kingdom	0.37	0.39	0.28	0.28	3.73	3.11	3.13	3.13	1.36	1.22	0.88	0.88	0.00	0.00	-0.34	-28.04
Switzerland	0.03	0.03	0.03	0.03	3.68	3.52	3.52	3.52	0.09	0.09	0.09	0.09	0.00	0.00	0.00	0.00
Canada	8.60	8.86	8.80	8.80	2.19	2.17	2.27	2.27	18.85	19.19	20.00	20.00	0.00	0.00	0.81	4.21
China	7.25	7.79	7.40	7.40	2.14	2.10	2.11	2.11	15.53	16.32	15.60	15.60	0.00	0.00	-0.72	-4.42
South Asia																
India	8.85	9.25	9.30	9.30	1.27	1.25	1.30	1.30	11.20	11.60	12.10	12.10	0.00	0.00	0.50	4.31
Pakistan	0.51	0.38	0.30	0.30	1.46	1.46	1.50	1.50	0.74	0.56	0.45	0.45	0.00	0.00	-0.11	-19.21
Bangladesh	0.81	0.80	1.10	1.10	1.30	1.29	1.30	1.30	1.05	1.03	1.43	1.43	0.00	0.00	0.40	38.83
Former Soviet Union - 12																
Russia	2.27	2.05	2.60	2.60	1.89	2.05	1.96	1.96	4.30	4.20	5.10	5.10	0.00	0.00	0.90	21.43
Ukraine	1.23	1.60	1.35	1.35	2.85	2.97	2.74	2.74	3.50	4.75	3.70	3.70	0.00	0.00	-1.05	-22.11
Belarus	0.36	0.40	0.48	0.48	2.22	2.25	2.25	2.25	0.80	0.90	1.08	1.08	0.00	0.00	0.18	20.00
Kazakhstan	0.13	0.09	0.15	0.15	1.48	1.32	1.47	1.33	0.19	0.12	0.22	0.20	-0.02	-9.09	0.08	62.60
Australia	3.90	3.48	3.20	3.20	2.12	1.71	1.72	1.72	8.27	5.94	5.50	5.50	0.00	0.00	-0.44	-7.35
South America																
Chile	0.03	0.03	0.04	0.04	3.73	4.39	3.86	3.86	0.12	0.12	0.14	0.14	0.00	0.00	0.01	9.76
Paraguay	0.07	0.07	0.08	0.08	1.77	1.50	1.53	1.53	0.12	0.11	0.12	0.12	0.00	0.00	0.01	9.52
Ethiopia	0.03	0.03	0.03	0.03	1.80	1.80	1.80	1.80	0.05	0.05	0.05	0.05	0.00	0.00	0.00	0.00
Others	0.72	0.62	0.63	0.64	1.91	2.10	2.11	2.08	1.38	1.29	1.34	1.34	0.00	0.00	0.04	3.40

World and Selected Countries and Regions

Table 16 Copra, Palm Kernel, and Palm Oil Production

Country / Region	Production (Million metric tons)				Change in Production			
	2022/23	Prel.	2024/25 Proj.		From last month		From last year	
		2023/24	Aug	Sep	MMT	Percent	MMT	Percent
Oilseed, Copra								
Philippines	2.60	2.90	2.50	2.50	0.00	0.00	-0.40	-13.79
Indonesia	1.68	1.69	1.68	1.68	0.00	0.00	-0.01	-0.59
India	0.94	0.94	0.94	0.94	0.00	0.00	0.00	0.00
Vietnam	0.29	0.29	0.29	0.29	0.00	0.00	0.00	0.00
Papua New Guinea	0.10	0.09	0.10	0.10	0.00	0.00	0.01	11.11
Sri Lanka	0.07	0.07	0.07	0.07	0.00	0.00	0.00	0.00
Thailand	0.07	0.07	0.07	0.07	0.00	0.00	0.00	0.00
Mexico	0.05	0.05	0.05	0.05	0.00	0.00	0.00	0.00
Cote d'Ivoire	0.03	0.03	0.03	0.03	0.00	0.00	0.00	0.00
Malaysia	0.03	0.03	0.03	0.03	0.00	0.00	0.00	0.00
World	6.00	6.21	5.81	5.81	0.00	0.00	-0.40	-6.44
Oilseed, Palm Kernel								
Indonesia	12.00	11.90	12.00	12.00	0.00	0.00	0.10	0.84
Malaysia	4.49	4.83	4.71	4.85	0.14	2.97	0.02	0.41
Nigeria	0.90	1.10	1.10	1.10	0.00	0.00	0.00	0.00
Thailand	0.86	0.86	0.89	0.89	0.00	0.00	0.03	3.49
Colombia	0.33	0.35	0.35	0.35	0.00	0.00	0.00	0.00
Guatemala	0.18	0.18	0.19	0.19	0.00	0.00	0.00	0.00
Papua New Guinea	0.17	0.18	0.18	0.18	0.00	0.00	0.00	0.00
Brazil	0.15	0.16	0.16	0.16	0.00	0.00	0.00	0.00
Honduras	0.16	0.16	0.16	0.16	0.00	0.00	0.00	0.00
Cameroon	0.15	0.15	0.15	0.15	0.00	0.00	0.00	0.00
World	20.06	20.52	20.55	20.70	0.15	0.73	0.18	0.88
Oil, Palm								
Indonesia	46.50	46.50	47.00	47.00	0.00	0.00	0.50	1.08
Malaysia	18.39	19.70	19.20	19.80	0.60	3.13	0.10	0.51
Thailand	3.33	3.28	3.50	3.50	0.00	0.00	0.22	6.71
Colombia	1.80	1.90	1.95	1.95	0.00	0.00	0.05	2.63
Nigeria	1.40	1.50	1.50	1.50	0.00	0.00	0.00	0.00
Guatemala	0.91	0.92	0.95	0.95	0.00	0.00	0.02	2.17
Papua New Guinea	0.80	0.82	0.83	0.83	0.00	0.00	0.01	1.22
Cote d'Ivoire	0.60	0.60	0.60	0.60	0.00	0.00	0.00	0.00
Honduras	0.60	0.60	0.60	0.60	0.00	0.00	0.00	0.00
Brazil	0.57	0.59	0.60	0.60	0.00	0.00	0.02	3.45
World	77.96	79.48	79.83	80.43	0.60	0.75	0.95	1.20

World and Selected Countries and Regions

Table 17 Cotton Area, Yield, and Production

Country / Region	Area (Million hectares)				Yield (Kilograms per hectare)				Production (Million 480 lb. bales)				Change in Production			
	Prel.		2024/25 Proj.		Prel.		2024/25 Proj.		Prel.		2024/25 Proj.		From last month		From last year	
	2022/23	2023/24	Aug	Sep	2022/23	2023/24	Aug	Sep	2022/23	2023/24	Aug	Sep	MBales	Percent	MBales	Percent
World	31.71	31.35	31.49	31.14	800	789	813	814	116.46	113.57	117.63	116.42	-1.21	-1.03	2.85	2.51
United States	2.95	2.61	3.49	3.49	1,068	1,008	941	904	14.47	12.07	15.11	14.51	-0.60	-3.94	2.45	20.27
Total Foreign	28.76	28.74	28.00	27.65	772	769	797	803	102.00	101.50	102.53	101.91	-0.62	-0.60	0.41	0.40
South Asia																
India	12.93	12.70	12.00	11.80	443	442	445	443	26.30	25.80	24.50	24.00	-0.50	-2.04	-1.80	-6.98
Pakistan	1.80	2.40	2.10	2.00	472	635	622	621	3.90	7.00	6.00	5.70	-0.30	-5.00	-1.30	-18.57
China	3.10	2.85	2.85	2.85	2,160	2,089	2,101	2,124	30.75	27.35	27.50	27.80	0.30	1.09	0.45	1.65
South America																
Brazil	1.60	1.66	1.94	1.94	1,595	1,911	1,874	1,874	11.72	14.57	16.70	16.70	0.00	0.00	2.13	14.62
Argentina	0.51	0.61	0.53	0.53	495	553	643	643	1.17	1.55	1.55	1.55	0.00	0.00	0.00	0.00
Paraguay	0.05	0.06	0.07	0.07	890	812	837	837	0.18	0.21	0.25	0.25	0.00	0.00	0.05	21.95
Africa																
Burkina Faso	0.62	0.46	0.47	0.47	273	361	334	334	0.78	0.77	0.72	0.72	0.00	0.00	-0.05	-5.88
Mali	0.60	0.71	0.72	0.70	269	407	408	373	0.74	1.33	1.35	1.20	-0.15	-11.11	-0.13	-9.64
Cote d'Ivoire	0.41	0.40	0.37	0.37	236	358	430	430	0.45	0.65	0.73	0.73	0.00	0.00	0.08	12.31
Benin	0.57	0.51	0.51	0.55	418	482	446	459	1.10	1.13	1.05	1.15	0.11	10.05	0.02	1.77
Egypt	0.14	0.10	0.13	0.13	661	686	670	670	0.43	0.32	0.40	0.40	0.00	0.00	0.09	26.98
Cameroon	0.23	0.24	0.25	0.24	563	671	587	602	0.60	0.74	0.66	0.65	-0.01	-1.52	-0.09	-12.16
Tanzania	0.36	0.47	0.47	0.44	184	220	220	173	0.31	0.47	0.47	0.35	-0.12	-25.53	-0.12	-25.53
Nigeria	0.27	0.27	0.27	0.27	282	282	282	282	0.35	0.35	0.35	0.35	0.00	0.00	0.00	0.00
Zimbabwe	0.24	0.24	0.24	0.24	195	195	195	195	0.22	0.22	0.22	0.22	0.00	0.00	0.00	0.00
Ethiopia	0.05	0.06	0.06	0.06	726	713	713	713	0.18	0.18	0.18	0.18	0.00	0.00	0.00	0.00
Former Soviet Union - 12																
Uzbekistan	1.05	1.03	1.00	1.00	664	613	631	653	3.20	2.90	2.90	3.00	0.10	3.45	0.10	3.45
Turkmenistan	0.55	0.55	0.55	0.55	356	356	356	356	0.90	0.90	0.90	0.90	0.00	0.00	0.00	0.00
Tajikistan	0.17	0.19	0.18	0.18	615	647	641	605	0.48	0.57	0.53	0.50	-0.03	-5.66	-0.07	-11.50
Kazakhstan	0.13	0.12	0.12	0.12	584	558	526	544	0.34	0.30	0.29	0.30	0.01	3.45	0.00	0.00
Middle East																
Turkey	0.56	0.44	0.49	0.49	1,922	1,583	1,796	1,796	4.90	3.20	4.00	4.00	0.00	0.00	0.80	25.00
Syria	0.03	0.03	0.03	0.03	1,161	1,161	1,161	1,161	0.16	0.16	0.16	0.16	0.00	0.00	0.00	0.00
Iran	0.12	0.10	0.10	0.10	977	762	871	871	0.53	0.35	0.40	0.40	0.00	0.00	0.05	14.29
Australia	0.65	0.51	0.55	0.55	1,943	2,156	1,979	1,979	5.80	5.00	5.00	5.00	0.00	0.00	0.00	0.00
Mexico	0.20	0.13	0.11	0.12	1,720	1,435	1,583	1,497	1.58	0.87	0.80	0.83	0.03	3.13	-0.05	-5.17
Burma	0.19	0.18	0.19	0.19	664	654	654	654	0.56	0.55	0.57	0.57	0.00	0.00	0.02	4.39
Others	1.65	1.75	1.73	1.69	579	510	549	556	4.39	4.09	4.35	4.31	-0.05	-1.10	0.22	5.28

World and Selected Countries and Regions

TABLE 18

The table below presents a record of the September projection and the final Estimate. Using world wheat production as an example, the "root mean square error" means that chances are 2 out of 3 that the current forecast will not be above or below the final estimate by more than 1.9 percent. Chances are 9 out of 10 (90% confidence level) that the difference will not exceed 3.1 percent. The average difference between the September projection and the final estimate is 8.3 million tons, ranging from 0.9 million to 30.7 million tons. The September projection has been below the estimate 28 times and above 15 times.

RELIABILITY OF PRODUCTION PROJECTIONS 1/

COMMODITY AND REGION	Root mean square error	90 percent confidence interval	Difference between forecast and final estimate				
			Average	Smallest	Largest	Years	
						Below final	Above final
	Percent		---Million metric tons---				
WHEAT							
World	1.9	3.1	8.3	0.9	30.7	28	15
U.S.	2.3	3.9	1.0	0.0	3.6	17	26
Foreign	2.1	3.6	8.3	0.2	30.9	31	12
COARSE GRAINS 2/							
World	2.1	3.6	17.3	0.2	50.6	32	11
U.S.	4.0	6.8	7.8	0.2	26.0	27	16
Foreign	2.5	4.1	15.3	1.0	59.9	30	13
RICE (Milled)							
World	2.2	3.7	6.1	0.4	24.1	34	9
U.S.	4.2	7.0	0.2	0.0	0.5	23	19
Foreign	2.2	3.8	6.1	0.3	24.4	34	9
SOYBEANS							
World	4.6	7.8	7.9	0.4	31.7	23	20
U.S.	4.8	8.2	2.9	0.2	10.4	23	20
Foreign	7.5	12.6	7.4	0.9	33.3	18	25
COTTON			---Million 480-lb. bales---				
World	4.5	7.6	3.1	0.1	12.6	24	19
U.S.	6.7	11.3	0.9	0.0	2.5	20	22
Foreign	5.1	8.5	2.7	0.0	11.3	26	17
UNITED STATES			-----Million bushels-----				
<i>CORN</i>	4.2	7.2	292	15	885	27	16
<i>SORGHUM</i>	8.4	14.1	25	0	81	17	25
<i>BARLEY</i>	5.1	8.7	11	1	36	18	25
<i>OATS</i>	9.6	16.2	11	0	44	8	33

1/ Marketing years 1981/82 through 2023/24 for grains, soybeans (U.S. only), and cotton. Final for grains, soybeans, and cotton is defined as the first November estimate following the marketing year for 1981/82 through 2022/23, and for 2023/24 the last month's estimate.

2/ Includes corn, sorghum, barley, oats, rye, millet, and mixed grain.

September 2024

Global Market Analysis, FAS, USDA