



United States  
Department of  
Agriculture

Foreign  
Agricultural  
Service

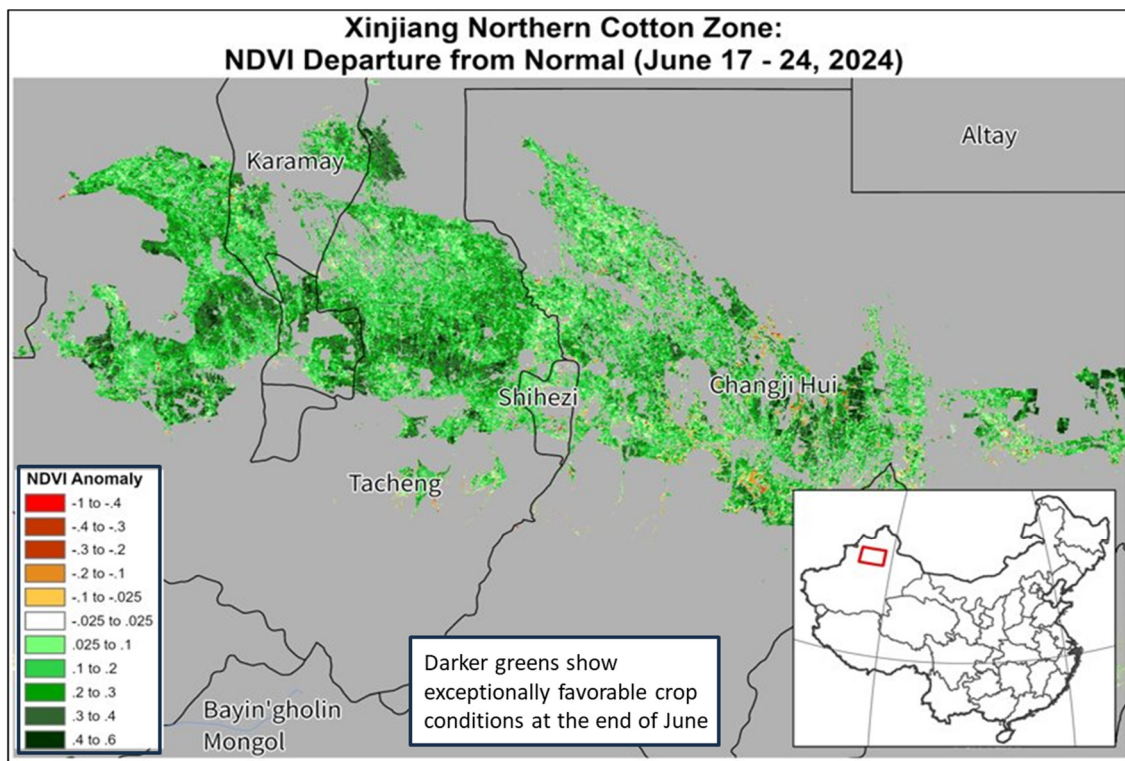
Circular Series  
WAP 7-24  
July 2024

# World Agricultural Production

## China Cotton: Production Increased Due to Higher Projected Yields

USDA forecasts China's marketing year (MY) 2024/25 cotton production at 27.5 million 480-pound bales (6.0 million metric tons), up 0.5 million bales or 2 percent from last month, unchanged from last year, but down 3 percent from the 5-year average of 28.4 million bales. Harvested area is estimated at 2.9 million hectares (mha), no change from last month and down 2 percent from last year and 10 percent from the 5-year average. Yield is forecasted at 2,101 kilograms per hectare (kg/ha), up 2 percent from last month, and from last year. Yield is higher than the 5-year average of 1,968 kg/ha, up by 7 percent, due to the increasing quantity of cotton produced in Xinjiang province where yield has nearly doubled compared to elsewhere in the country.

Approximately 90 percent of total China cotton is produced in Xinjiang province under highly mechanized farming. According to Xinjiang Provincial Statistics Department approximately 41 percent of cotton is produced by Xinjiang Production and Construction Engineering Corp (PCC) and 59 percent is produced by the Local Cooperative System.

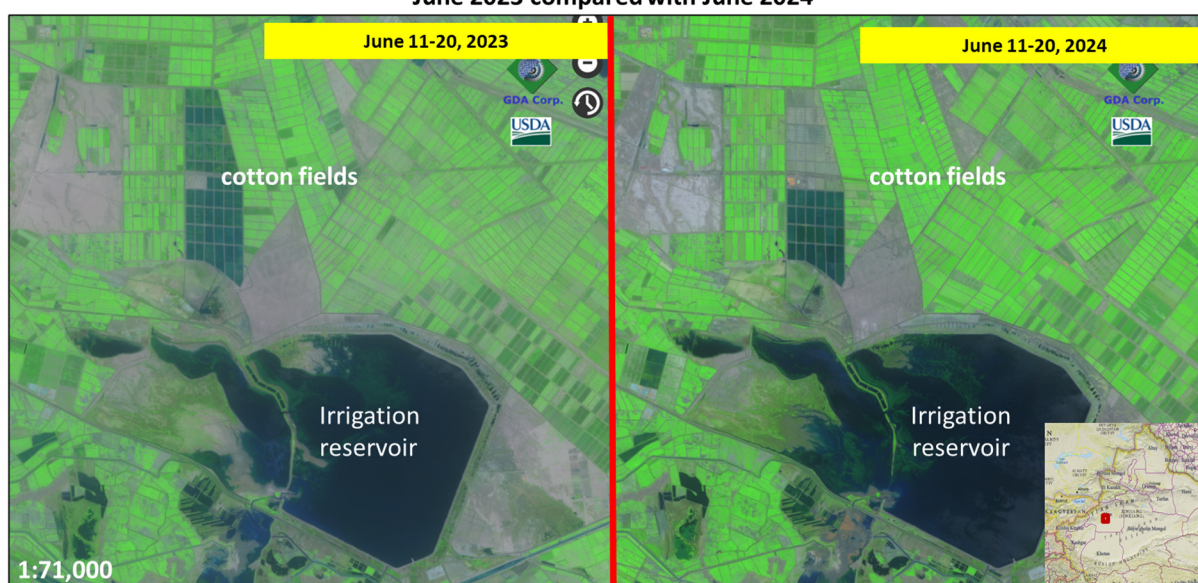


Sources: USDA/NASA, MODIS NDVI Anomaly imagery; ESA World Cover 10m crop mask, 2020

Approved by the World Agricultural Outlook Board

The satellite-derived MODIS Normalized Difference Vegetation Index (NDVI) indicates that crop conditions over the main cotton growing areas at the end of June are exceptionally favorable. This is also supported by a combination of national and regional crop condition analysis inputs from FAS/Beijing. In Xinjiang, the crop is now approaching flowering and blooming stages. The typical cotton growing season is April to October. In Xinjiang, planting starts in April while in eastern China planting begins in late April and extends through May. The MY 2024/25 season has been characterized by favorable weather conditions and good irrigation water availability throughout a major part of the season. In Xinjiang, these conditions facilitated rapid planting, early crop establishment and development; above-average yields are forecasted. In addition to the favorable planting conditions, farmers were also encouraged by the government’s continuation of the target price-based cotton subsidy.

**China: Exceptional Cotton Crop Conditions in Aksu region of Xinjiang  
June 2023 compared with June 2024**



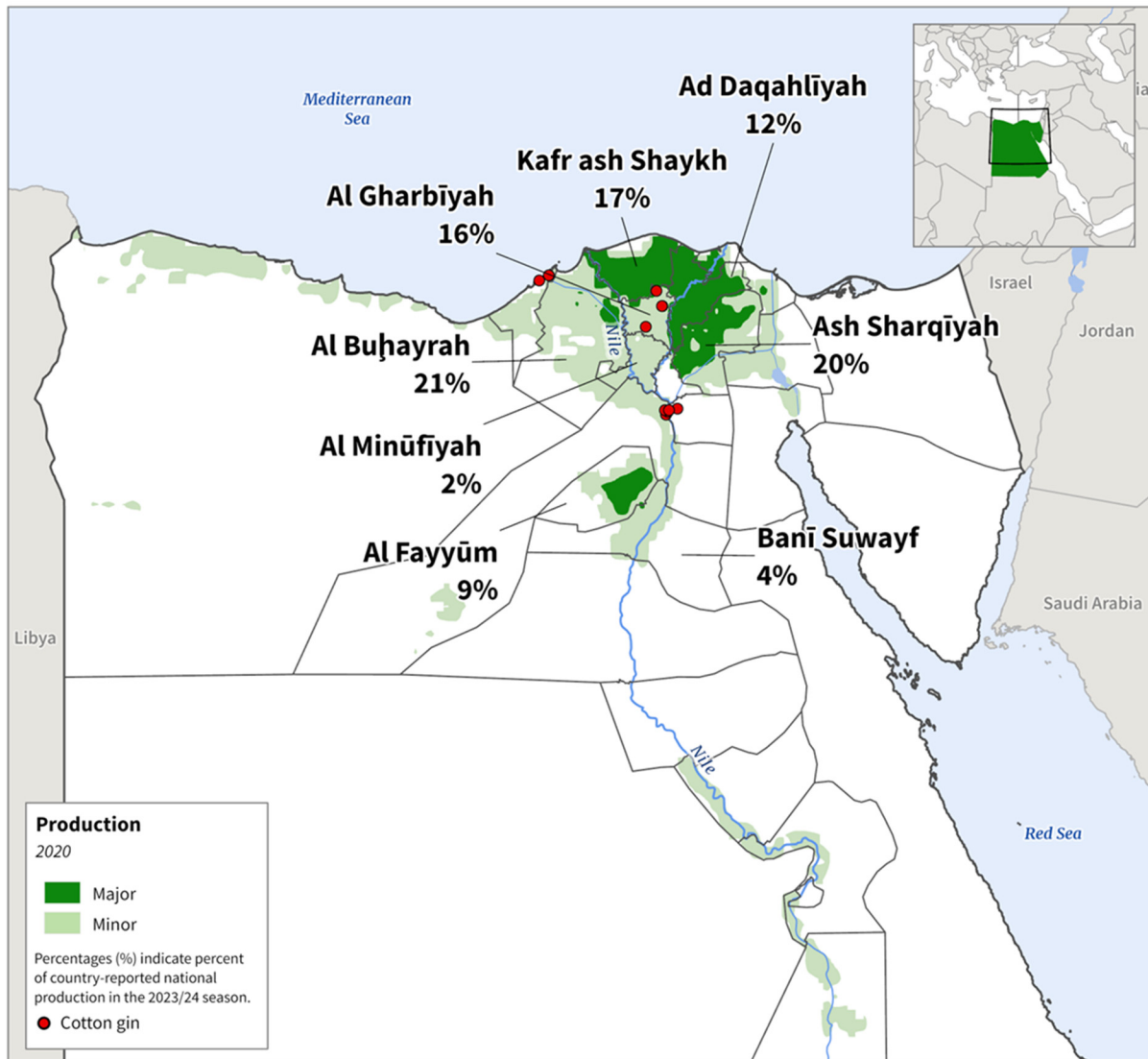
Source: GDA GeoChronicles 10-day Surface Reflectance Composite with Copernicus Sentinel-2, 10 meter (SWIR1/NIR/Red)

The year-to-year estimated 2 percent harvested area decline is primarily due to small reductions in the major cotton producing province of Xinjiang and larger area reductions in eastern China. However, the significant year-to-year yield increase, especially in Xinjiang, is likely to offset planted area reductions resulting in the same production as last year. *(For more information, please contact [Dath.Mita@usda.gov](mailto:Dath.Mita@usda.gov).)*

**Egypt Cotton: Revised Area Boosts Production Forecast**

USDA forecasts Egypt cotton production for marketing year (MY) 2024/25 at 360,000 480-pound bales. This amount is up 50,000 bales or 16 percent from last month and up 14 percent from last year’s revised production. The MY 2024/25 crop is also 17 percent above the 5-year average production level. Harvested area is forecast at 115,000 hectares, up 15 percent from both last month and last year’s revised area. Harvested area is forecast to be 17 percent above the 5-year average. Yield is forecast at 682 kilograms per hectare (kg/ha), up slightly (1 percent) from last month, but down 1 percent from last year, and down 1 percent from the 5-year average.

## Egypt: Cotton Production

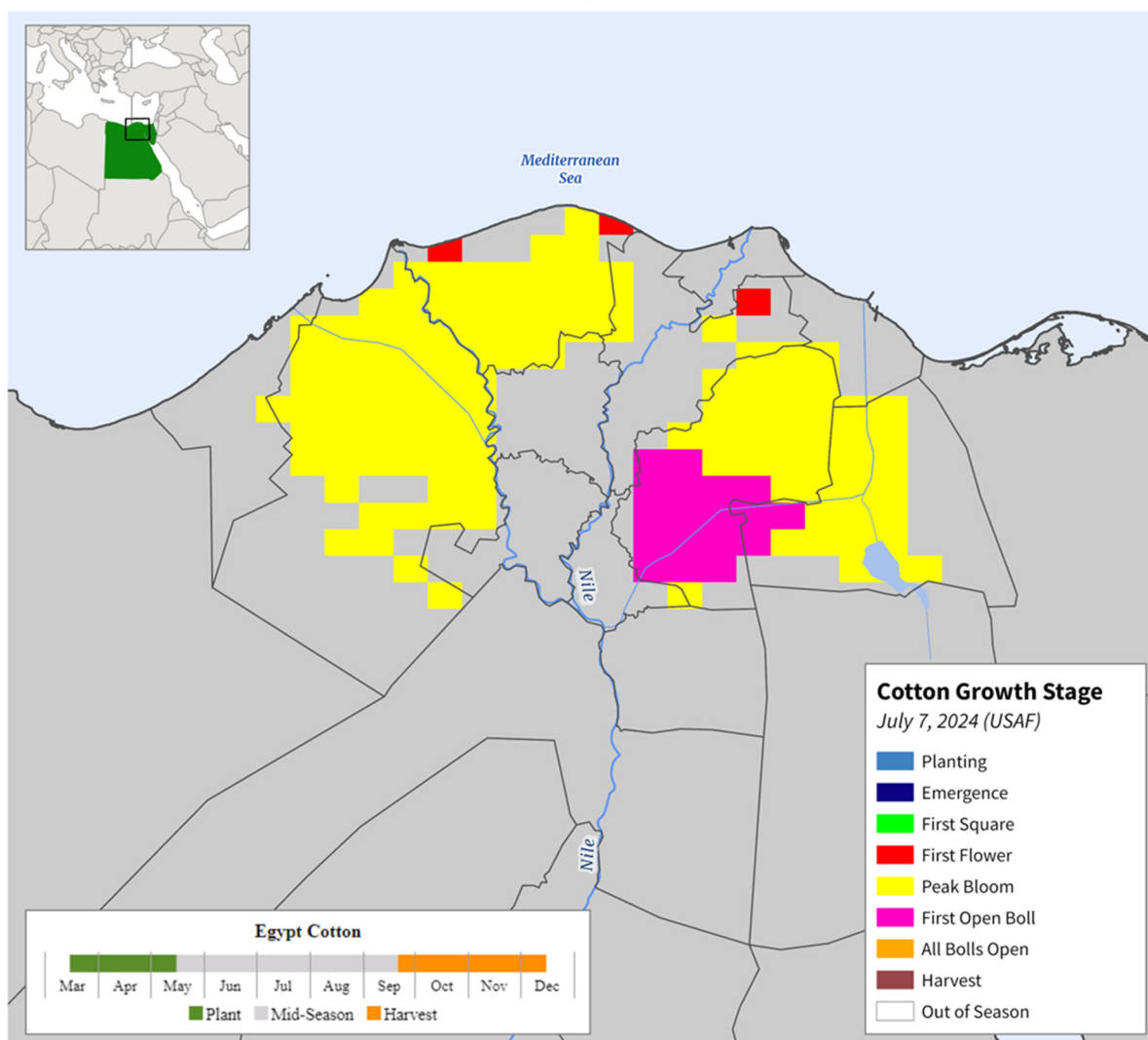


Sources: Cotton Arbitration & Testing General Organization (CATGO) "Amount of lint Cotton produced Season 2023/2024"; Cotton Egypt Association "CEA's licenses by country" (06/25/2024); IFPRI's Spatial Allocation Model (SPAM) Cotton Production (2020)

Cotton estimates for both MY 2023/24 and MY 2024/25 have been revised based on new data. Planting data from the Egyptian Agricultural Ministry, along with information from FAS/Cairo has led to higher estimates for the MY 2024/25 crop. The MY 2023/24 crop was lowered due to recent data released by the Cotton Arbitration and Testing General Organization (CATGO) and confirmed by FAS/Cairo.

## Egypt: Cotton Growth Stage

July 7, 2024



Source: United States Air Force, Cotton Growth Stage (Week July 1-7, 2024)

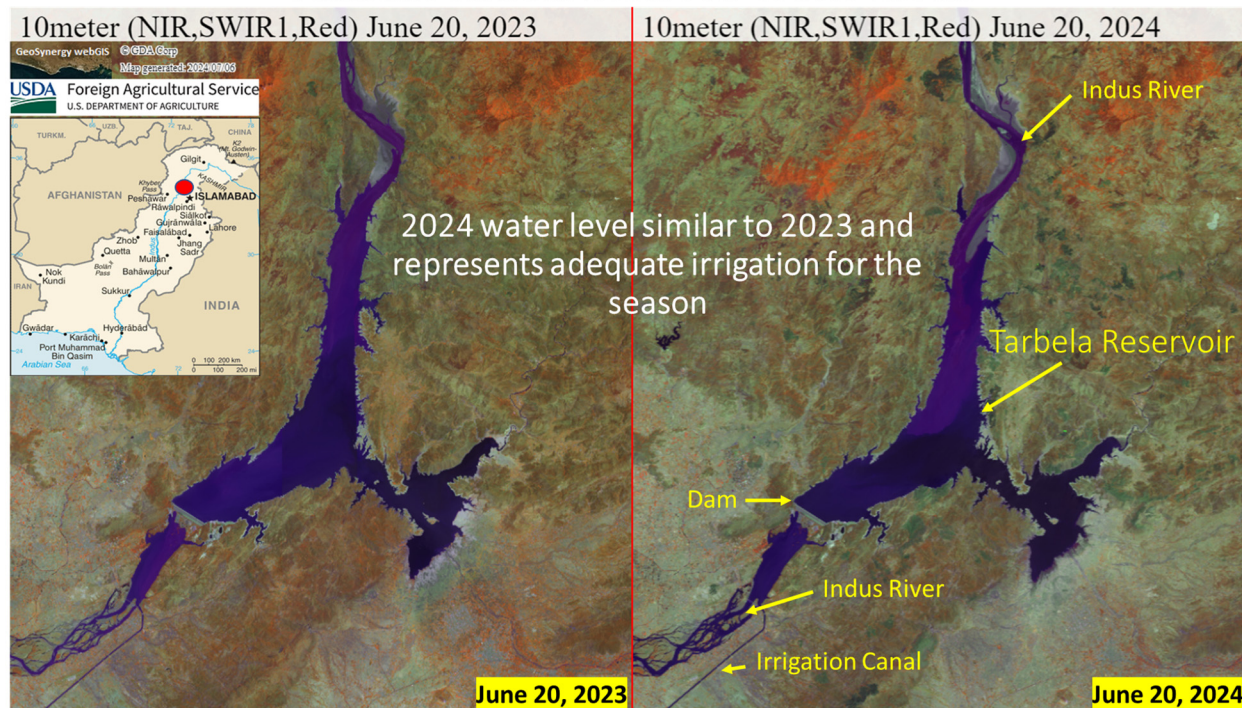
Egyptian cotton growers decide on planting intentions based on expectations of relative prices and profits for different crops. Cotton competes with the other primary summer crops of rice and corn in the Nile Delta. (For more information, please contact [Bryan.Purcell@usda.gov](mailto:Bryan.Purcell@usda.gov).)

### Pakistan Cotton: Production Lower Based on Revised Area Data

Pakistan's cotton production for marketing year 2024/25 is estimated at 6.0 million 480-pound bales, down 0.5 million bales (8 percent) from last month and 0.7 million bales (10 percent) from last year. Harvested area is estimated at 2.1 million hectares (mha), down 0.3 mha (13 percent) from last month and from last year. Cotton harvested area is revised lower based on reports of reduced sowing due to extreme heat in May and June and corroborated by official data. Yield is estimated at 622 kilograms per hectare, up 5 percent from last month and up 2 percent from last year.



## Pakistan Tarbela Reservoir Water Levels

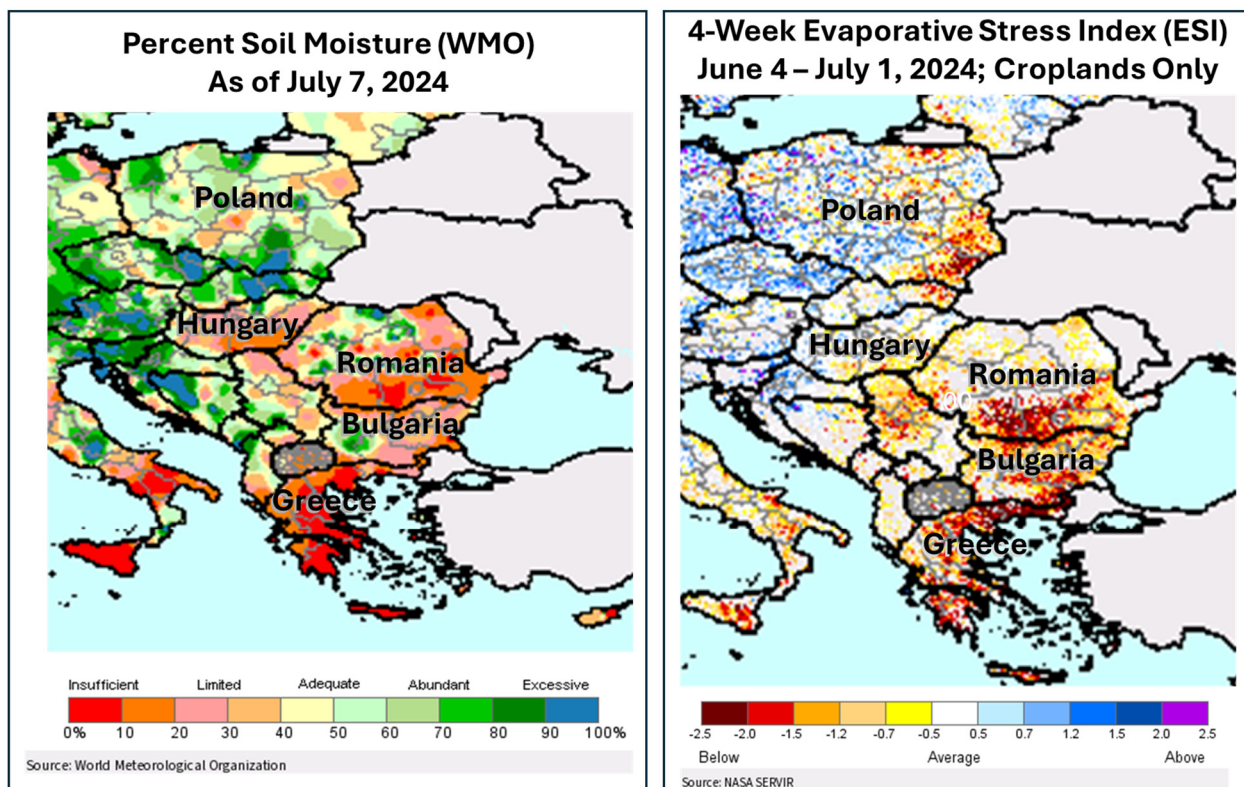


Source: GDA GeoChronicles 10-day Surface Reflectance Composite with Copernicus Sentinel-2, 10 meter (NIR/SWIR1/Red)

Cotton is planted from April through June and harvested from August through December. Growing conditions are favorable for the cotton crop this season with beneficial soil moisture and adequate water for irrigation. The Tarbela reservoir levels in 2024 are similar to 2023 and represent adequate irrigation for the season. Insect infestations have thus far been minimal and the crop, according to local observers, appears in good condition. *(For more information, please contact [James.Crutchfield@usda.gov](mailto:James.Crutchfield@usda.gov).)*

### European Union Corn: Yield Lowered on Severe Heat and Dryness

Corn production in the European Union (EU) for marketing year (MY) 2024/25 is forecast at 64.0 million metric tons (mmt), down 0.8 mmt (1 percent) from last month, but up 3.0 mmt (5 percent) from last year, and less than 1 percent above the 5-year average. Harvested area is forecast at 8.7 million hectares, unchanged from last month, but 4 percent above last year and 3 percent below the 5-year average. Yield is estimated at 7.40 tons per hectare (t/ha), down 1 percent from last month but up slightly from last year and 3 percent above the 5-year average.

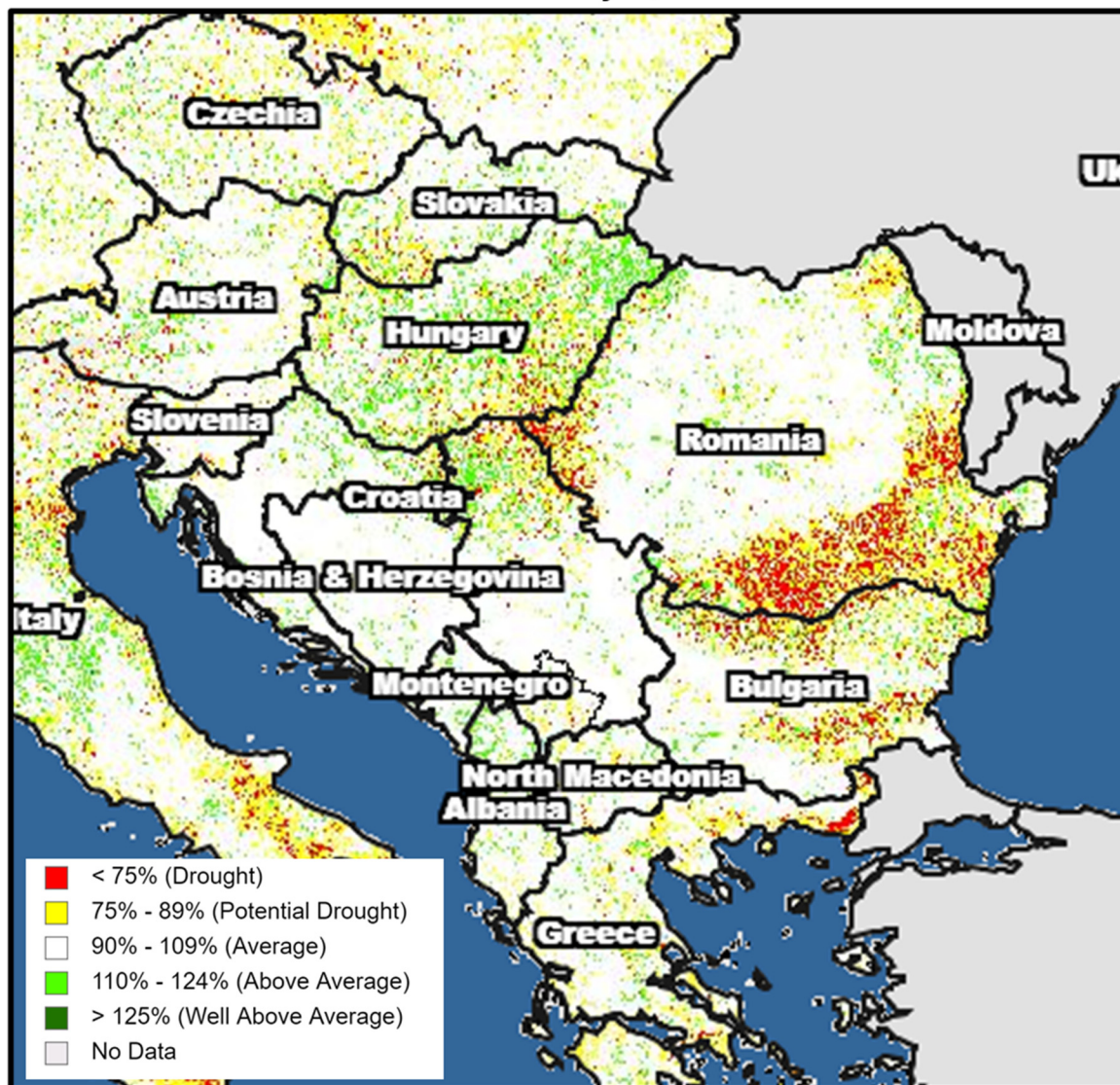


Corn is the predominant summer grain in the Balkan countries of southeast Europe. In recent years, farmers have been reluctant to plant corn due to frequent drought and heat events that have stressed the crop and reduced yields. With limited irrigation, summer crops in the Balkans are highly susceptible to these events. Winter crops and the more tolerant sunflower crop are preferred but rotational demands limit their expansion.

Heat and dryness in southeast Europe have already taken an early toll on corn. Satellite-derived Percent of Average Seasonal Greenness shows areas of reduced vigor along the Danube Valley of Romania and Bulgaria and also in the Pannonian Basin, covering Hungary, western Romania, northern Serbia, and eastern Croatia. Temperatures in these regions have consistently been above 35 degrees Celsius while rainfall during this period has been locally minimal. This has resulted in a lack of soil moisture and increased evaporative stress on plants. Corn was approaching or entering reproduction in early July, but the weather has already been so severe that early yield reductions are forecast. The production decrease of 0.80 mmt in the EU includes -0.40 mmt for Romania, -0.25 mmt for Hungary, -0.10 mmt for Croatia, and -0.05 mmt for Bulgaria. In addition, neighboring non-EU member Serbia is revised down 0.15 mmt.



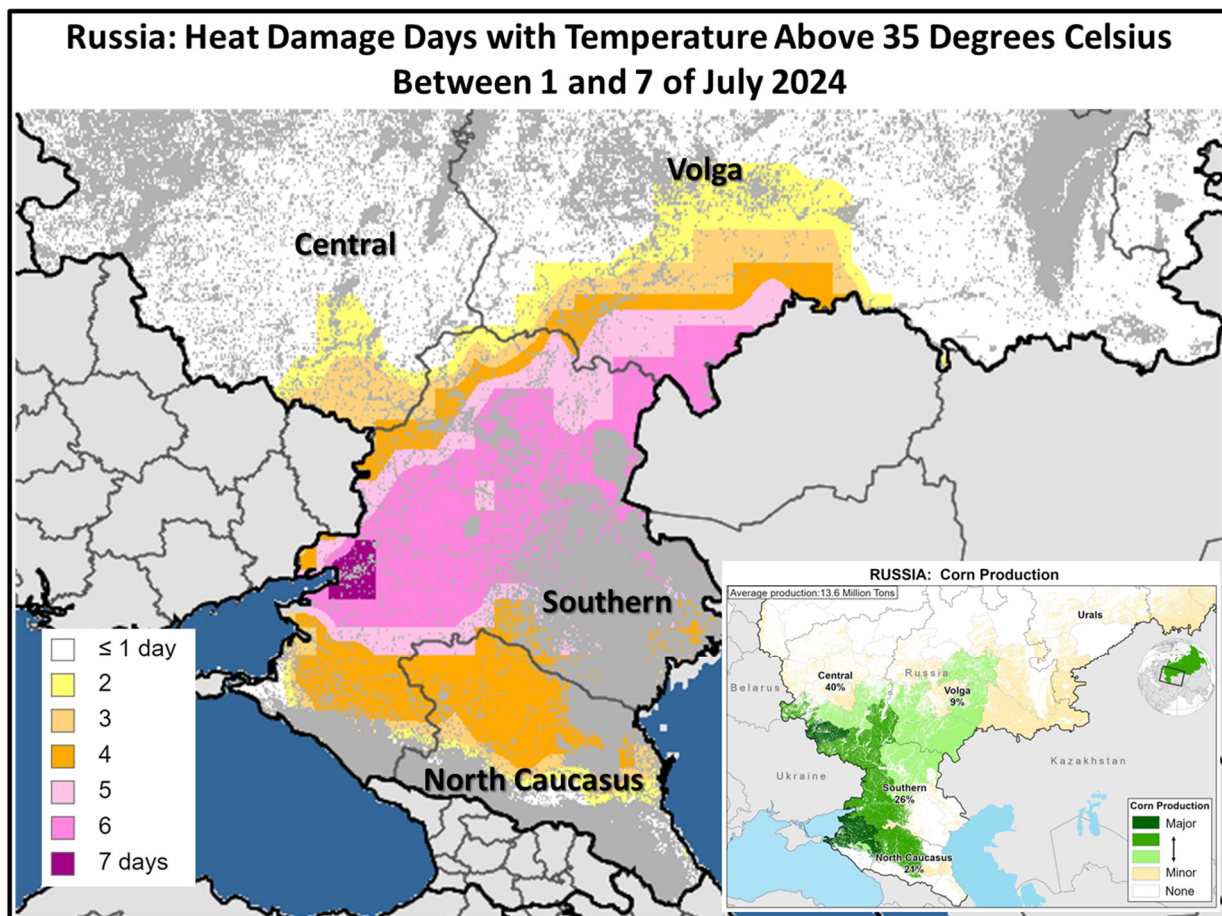
## MODIS Percent of Average Seasonal Greenness (PASG 1-Month) June 3 – July 2, 2024



For country-specific area, yield, and production estimates within the European Union (EU), please go to PSD Online at <https://apps.fas.usda.gov/PSDOnline/app/index.html#/app/home>, and select “Downloadable Data Sets.” Select the zipped file for “EU Countries Area & Production.” (For more information, please contact [Bryan.Purcell@usda.gov](mailto:Bryan.Purcell@usda.gov).)

### Russia Corn: Excessive Heat and Prolonged Dryness Threaten Crop

Russia corn production for marketing year 2024/25 is forecast at 15.0 million metric tons, down 3 percent from last month and 10 percent from last year. Yield is forecast at 6.00 tons per hectare, down 3 percent from last month and 13 percent from last year. Harvested area is forecast at 2.5 million hectares (mha), unchanged from last month and up 4 percent from last year.



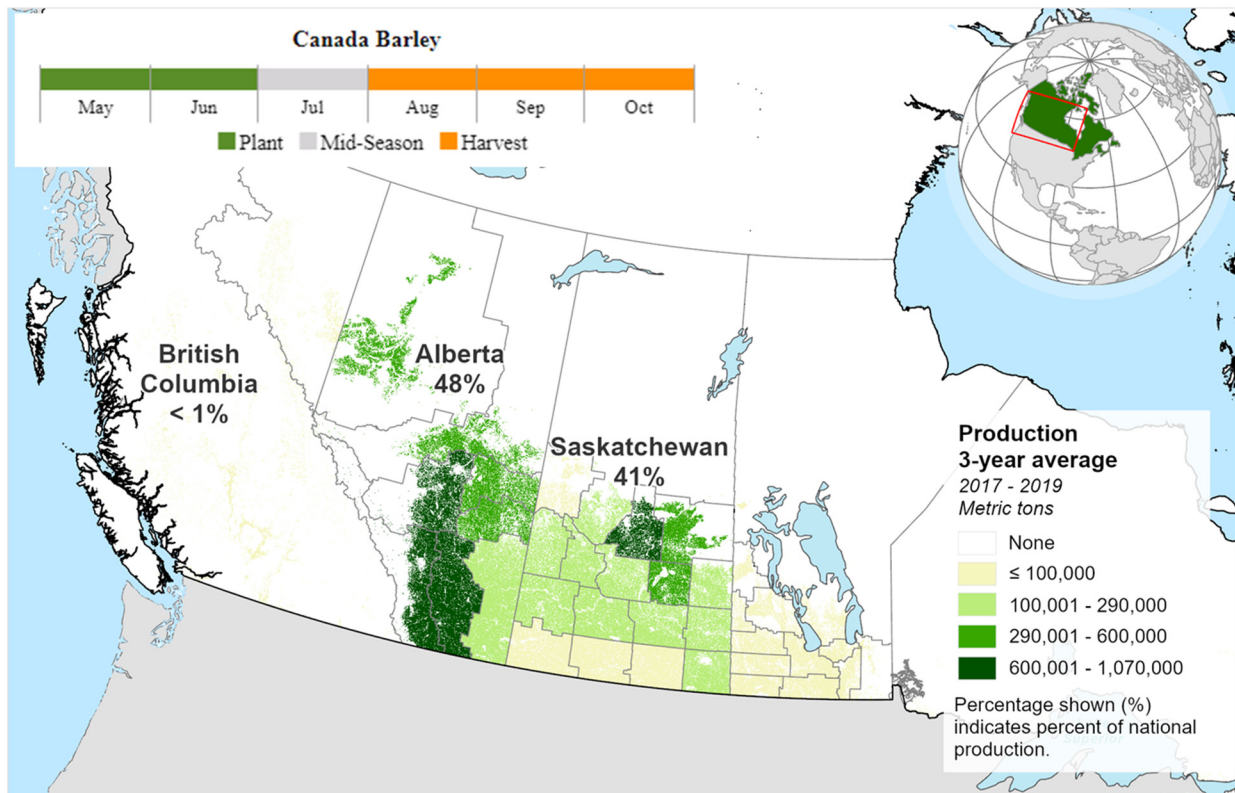
According to the Russian Ministry of Agriculture, planting of all spring crops is complete. Corn has been sown on an area of 2.6 mha, which is at the same level as last year's area at the end of the planting campaign. The new crop was planted under insufficient soil moisture which resulted from below-average precipitation and higher-than-normal temperatures across the European part of Russia since early spring. This month's yield reduction is prompted by an early-June scorching heat wave, which further threatens the already stressed crop. Currently the crop is developing ahead of normal due to the abnormal warmth and was approaching (north) or progressing through (south) the reproductive stages of development. Typically, corn reaches the key yield formation stages around late July and early August. *(For more information, please contact [Iliana.Mladenova@usda.gov](mailto:Iliana.Mladenova@usda.gov).)*

### **Canada Barley: Planted Area Down from Last Year**

USDA forecasts Canada barley production for marketing year (MY) 2024/25 at 8.6 million metric tons, down 10 percent from last month, 3 percent from last year and 8 percent below the 5-year average. Harvested area is estimated at 2.4 million hectares (mha), down 9 percent from last month, 13 percent from last year and 15 percent below the 5-year average. Yield is forecast at 3.64 tons per hectare, down 1 percent from last month but up 11 percent from last year and 7 percent above the 5-year average.



## Canada: Barley



**USDA** Foreign Agricultural Service  
U.S. DEPARTMENT OF AGRICULTURE

Sources: Statistics Canada, Estimated production by Small Area Data Region (SADR); AgCanada Cropland Inventory 2018

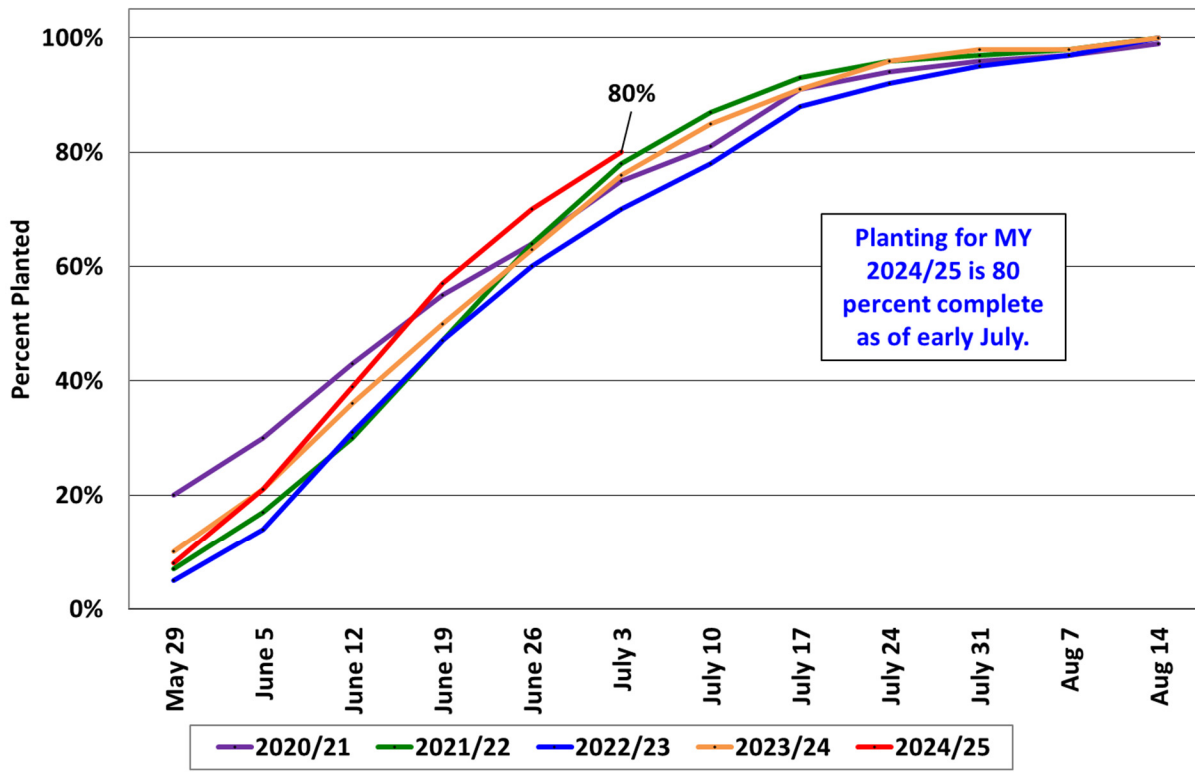
Statistics Canada released its principal field crop area estimates based on the June 2024 Field Crop Survey where farmers report the total area that was seeded this year for each crop. The survey indicated 2.6 mha of barley was planted this year, which is a 13 percent nationwide decrease from last year. Barley is predominantly grown in Alberta and Saskatchewan; planted area was decreased from last year by 8.6 percent and 17.5 percent, respectively. On average, roughly 9 percent of planted area for barley is left unharvested, annually, which is accounted for in the USDA harvested area estimate.

The beginning of this season started out very dry; however, precipitation in May and June saturated the soils and have led to favorable conditions for crop development. Recent provincial reports have indicated that crop conditions are in the good to excellent range despite the cool and wet conditions that have persisted. *(For more information, please contact [Shannon.Moyo@usda.gov](mailto:Shannon.Moyo@usda.gov).)*

### Argentina Wheat: Planted Area Higher as Summer Crop Harvest Ends

Argentina wheat production for marketing year 2024/25 is forecast at 18.0 million metric tons, up 3 percent from last month, and up 14 percent from last year. Yield is forecast at 3.00 tons per hectare, down slightly from last month, but up 6 percent from last year. Harvested area is forecast at 6.0 million hectares (mha), up 3 percent from last month, and up 8 percent from last year.

### Argentina Wheat: Planting Progress



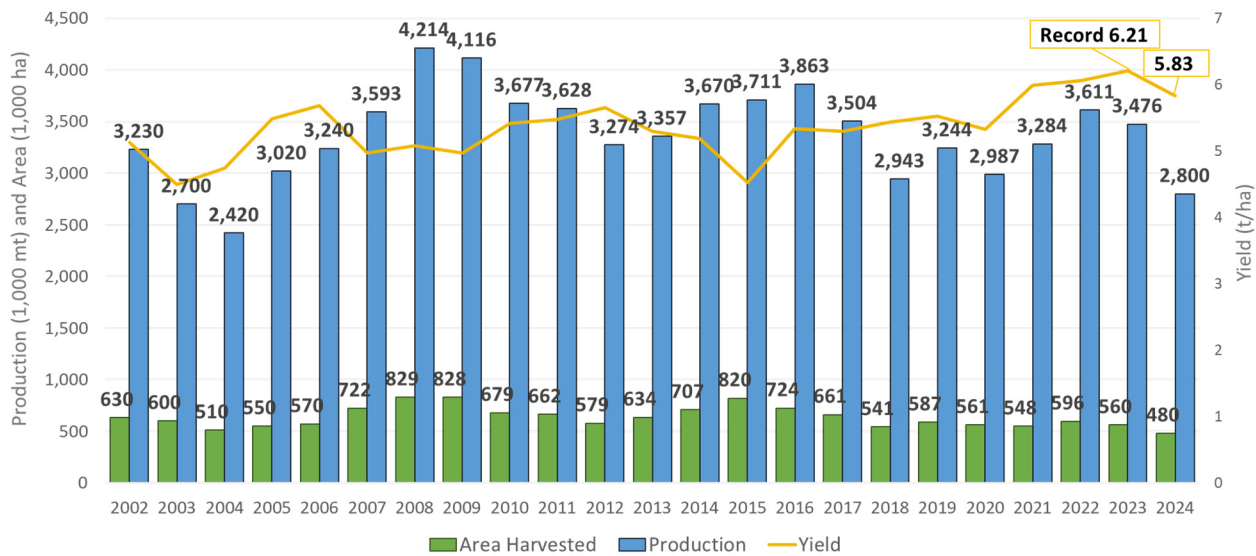
Source: Argentina Ministry of Agriculture

Planting occurs from late May until the end of July and is about 80 percent complete as of early July. This month, the Ministry of Agriculture updated their wheat planted area forecast to 6.3 mha from 6.15 mha. USDA expects abandonment to be normal this year, which is around 5 percent on average. In Argentina, the weather typically becomes drier during this time, but sufficient rainfall during the prior few months means soil moisture conditions are near average for the newly planted and emerging crop. (For more information, please contact [Katie.McGaughey@usda.gov](mailto:Katie.McGaughey@usda.gov).)

### Mexico Wheat: Lowest Production in 20 Years

USDA estimates Mexico wheat production for marketing year (MY) 2024/25 at 2.8 million metric tons, down 18 percent from last month, down 19 percent from last year's revised estimate, and 16 percent below the 5-year average. Yield is estimated at 5.83 tons per hectare (t/ha), down 4 percent from last month and 6 percent from last year's new record of 6.21 t/ha. Harvested area is estimated at a record low of 480,000 hectares (ha), down 14 percent from last month, 14 percent from last year's revised estimate, and 16 percent below the 5-year average. The last time severe dry weather affected water availability for the wheat crop was MY 2018/19, when harvested area was 541,000 ha.

## Mexico Wheat Area, Yield, Production Series



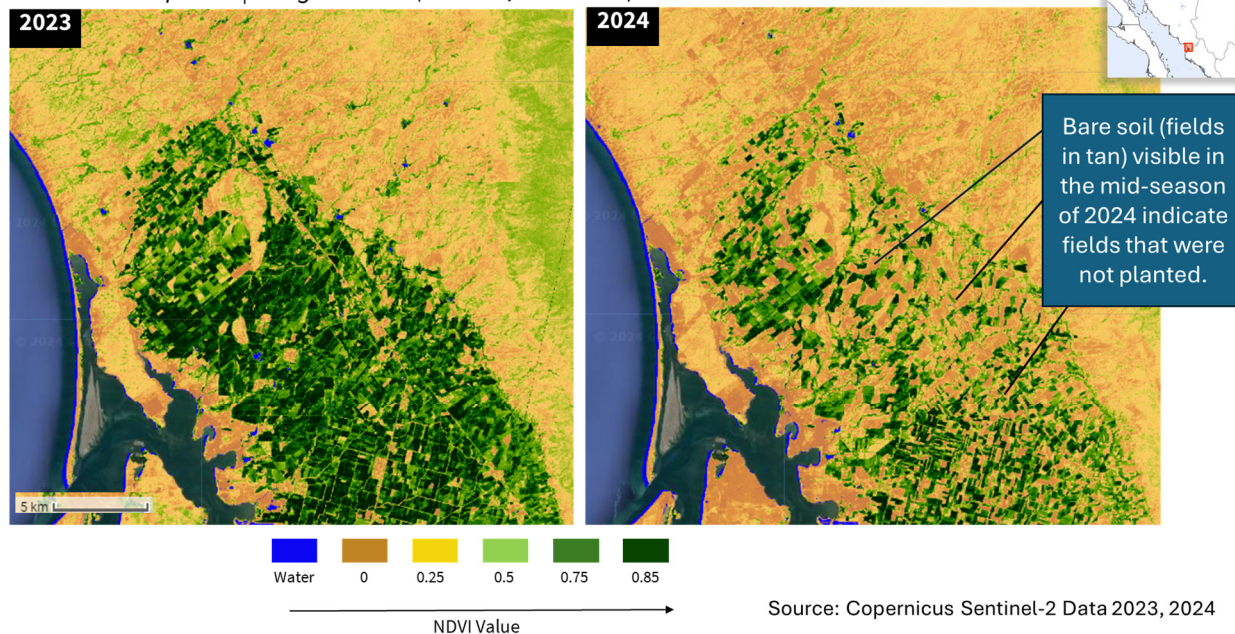
Source: USDA PSD Online

Wheat in Mexico is predominantly grown in the fall/winter season, which accounts for roughly 96 percent of total production. This season is almost entirely dependent on irrigation for crop development. The top winter wheat producing state is Sonora at 54 percent of winter wheat production. Sonora along with nearby Sinaloa (the third largest state) together make up an average 65 percent of the nation's wheat production. In this region, reservoir levels have been 20 percent lower than the previous year, limiting irrigation availability. Due to the prolonged drought, farmers were allowed to irrigate only three times this season, which reduced wheat production.

Planting operations for the fall/winter season occurred in November and extended through early February. In Guanajuato, the second largest winter wheat producing state, irrigation is mainly sourced from local aquifers. Due to lower reservoir levels competition for groundwater was high. Farmers in Guanajuato recently reported average yields of 5.00 t/ha, a 26 percent yearly decline due to lower irrigation and high average temperatures. According to the latest official data from the Secretariat of Agriculture and Rural Development (SADER), planted area declined by 7 percent in Sonora, 23 percent in Guanajuato, 31 percent in Sinaloa, and 16 percent in Baja California. Satellite imagery of southern Sonora shows the year-to-year difference in planted fields, confirming the SADER report.

## Mexico: Field-level Imagery of the Vegetation Condition in Sonora

March 15 to April 15 | Image Center: (26.3758, -109.1284)

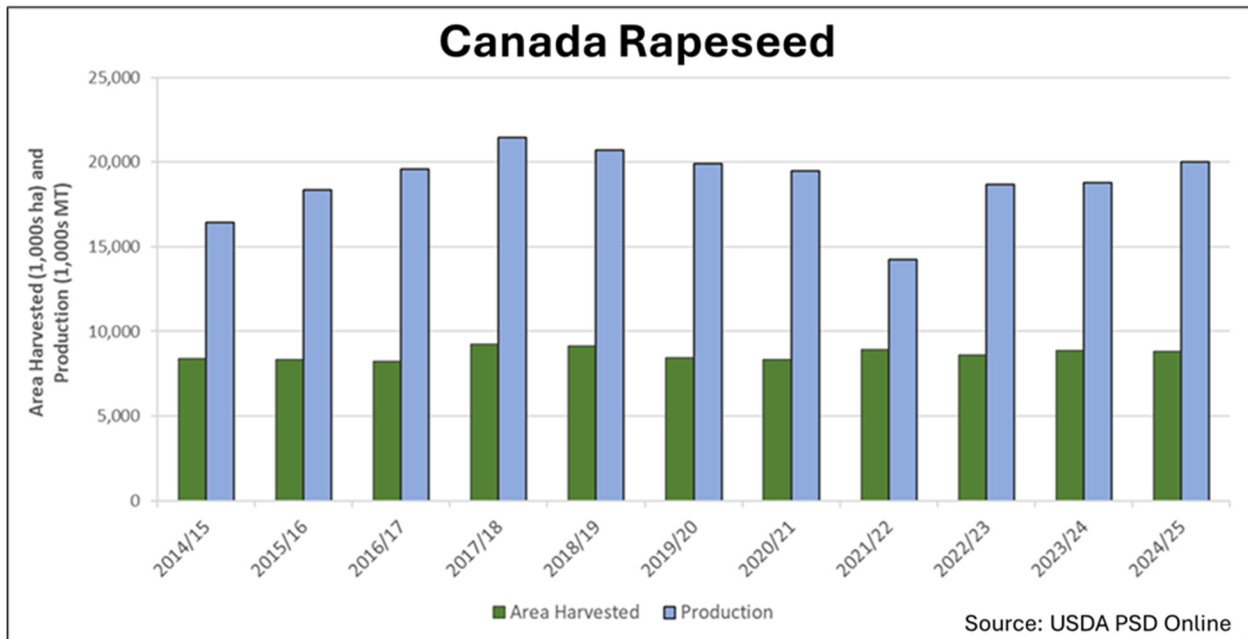


Harvest for the fall/winter season ends in July, and harvested area is estimated at 414,000 ha, 18 percent lower than the previous year. The reduction is based on lower reservoir water levels in Sonora and Sinaloa. Mexico's spring/summer wheat planting will occur from June through August and this mostly rainfed crop typically accounts for just four percent of total wheat production. *(For additional information, please contact [Lisa.Colson@usda.gov](mailto:Lisa.Colson@usda.gov).)*

## Canada Rapeseed: Harvested Area, Production and Yield Increase for MY 2024/25

USDA forecasts Canada rapeseed production for marketing year (MY) 2024/25 at 20.0 million metric tons, up 2 percent from last month, 6 percent from last year and 10 percent above the 5-year average. Harvested area is estimated at 8.8 million hectares (mha), up 1 percent from last month, but down 1 percent from last year, yet 2 percent above the 5-year average. Yield is forecast at 2.27 tons per hectare, up 1 percent from last month, and 7 percent from last year and the 5-year average.



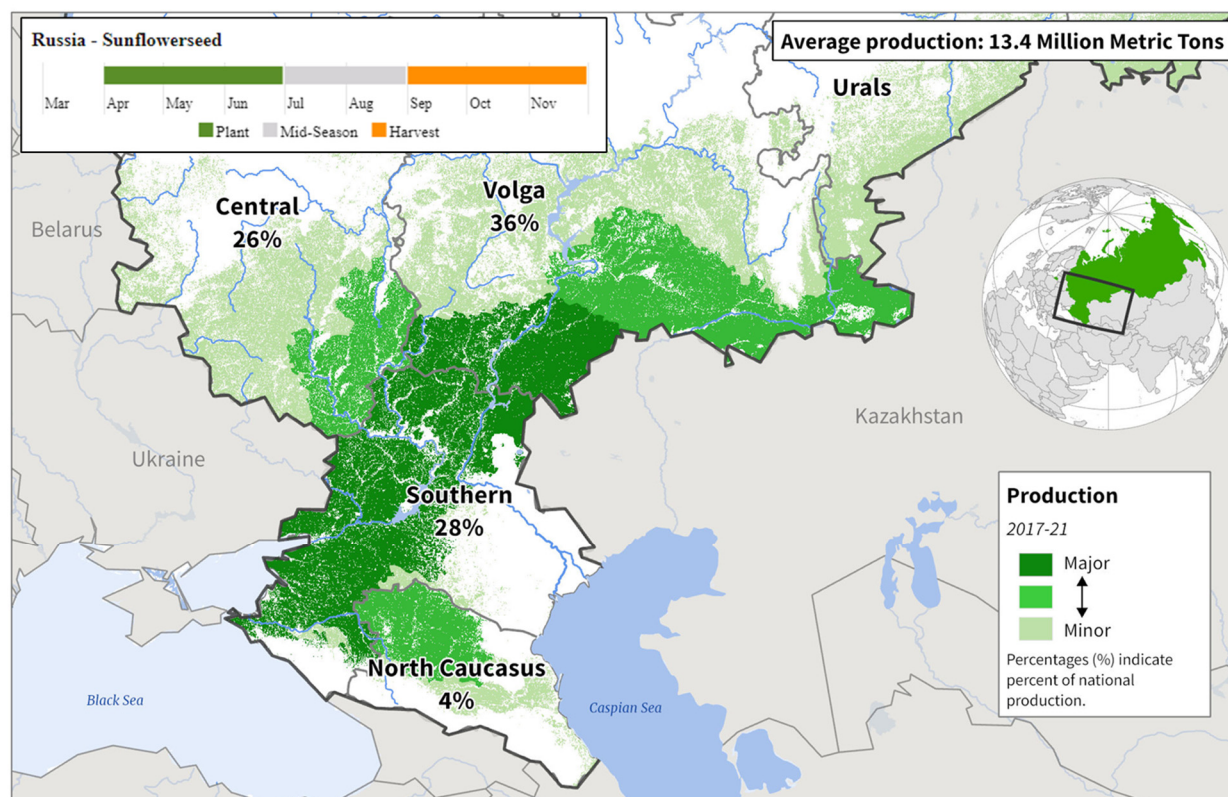


Statistics Canada released its principal field crop area estimates based on the June 2024 Field Crop Survey where farmers report the total area that was seeded this year for each crop. The survey indicated 8.9 mha of rapeseed was planted this year, which is a slight decrease nationwide from last year. Rapeseed is predominantly grown in the Canadian Prairies. On average, roughly 1 percent of planted area for rapeseed is left unharvested, annually, which is accounted for in the USDA harvested area estimate.

The beginning of this season started out very dry; however, precipitation in May and June saturated the soils and have led to favorable conditions for crop development. Recent provincial reports have indicated that crop conditions are in the good to excellent range despite the cool and wet conditions that have persisted. *(For more information, please contact [Shannon.Moyo@usda.gov](mailto:Shannon.Moyo@usda.gov).)*

## Russia Sunflowerseed: Heat and Dryness Drive a Decrease in Expected Yield

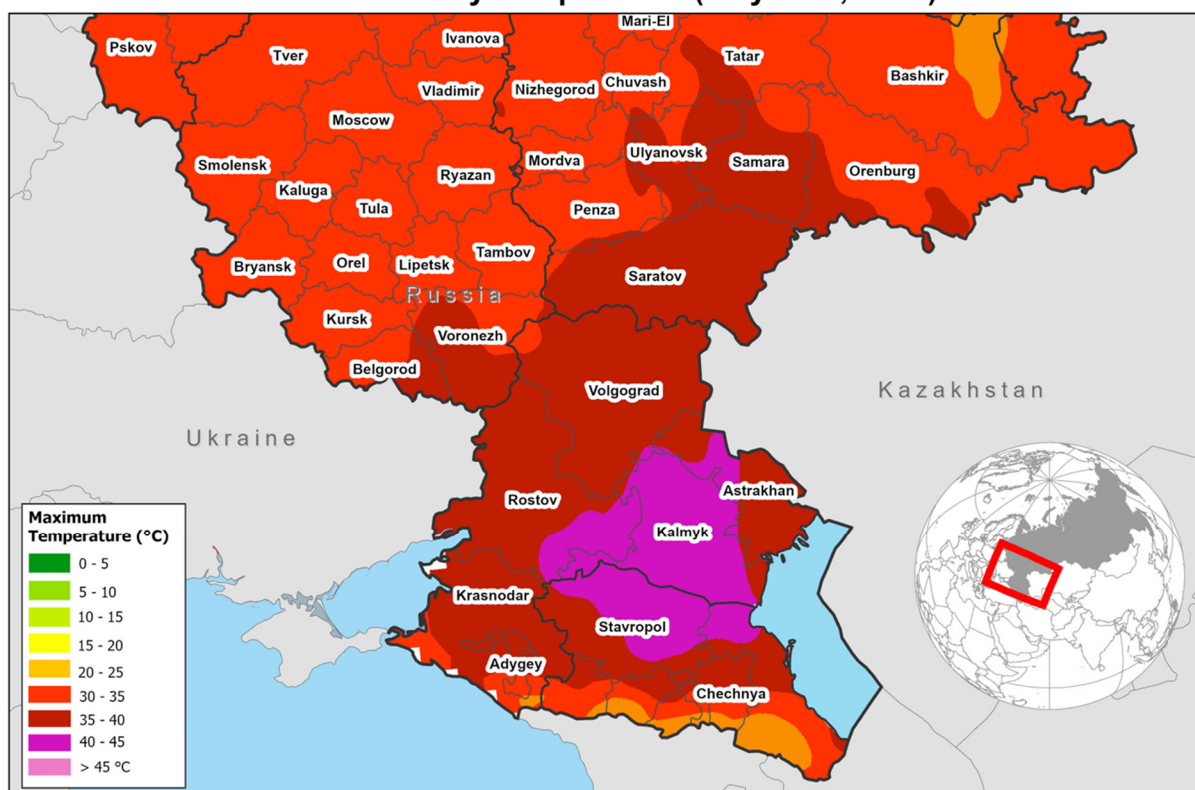
### Russia: Sunflower Seed Production



Sources: Rosstat, Average Crop Production 2017-2021; GFSAD 30 m crop cover (2015)

Russia sunflowerseed production for marketing year (MY) 2024/25 is forecast at 16.5 million metric tons, down 3 percent from last month, 4 percent from last year, but 6 percent above the 5-year average. Yield is forecast at 1.74 tons per hectare, down 3 percent from last month, 6 percent from last year, but slightly above the 5-year average. Harvested area is forecast at 9.5 million hectares (mha), unchanged from last month, up 2 percent from last year and 6 percent from the 5-year average.

## European Russia Maximum Daily Temperature (July 1 - 6, 2024)



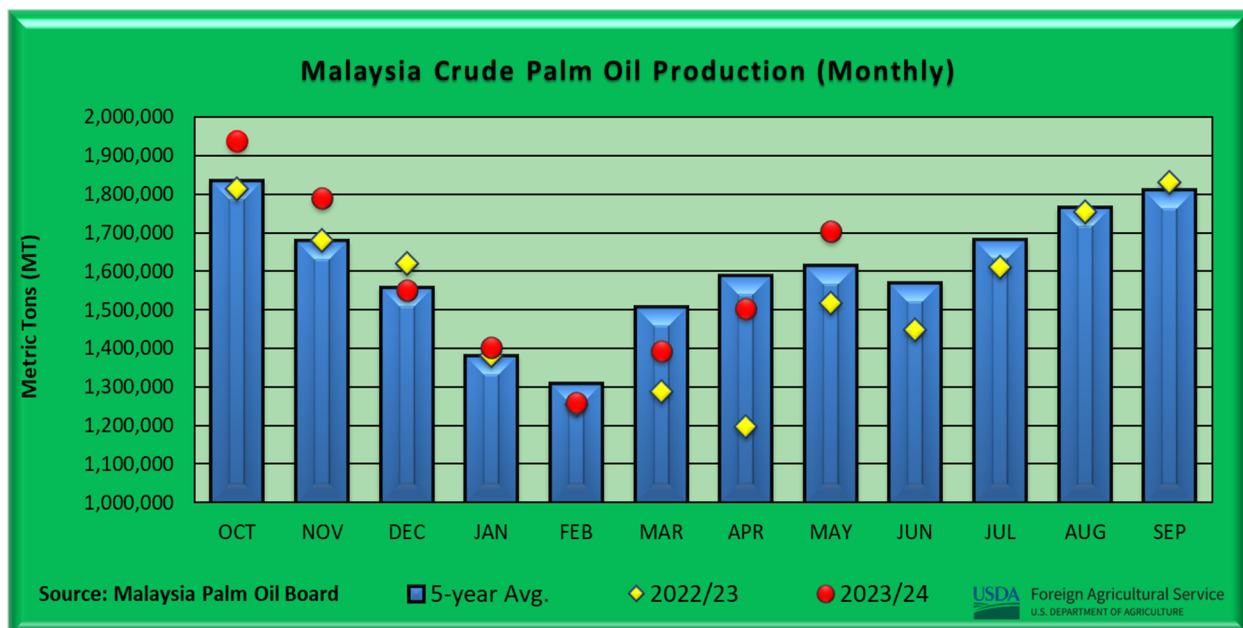
Source: NOAA CPC

According to the Russian Ministry of Agriculture, planting of all spring crops is complete. Sunflowerseed has been sown on an area of 9.3 mha, which is only slightly behind last year’s pace when planted area was 9.5 mha during the same time. The new crop was planted under insufficient soil moisture which developed as a result of below-average precipitation and higher-than-normal temperatures across the European part of Russia since early spring. This month’s yield reduction is prompted by an early-June scorching heat wave, which further threatens the already stressed crop. Currently the crop is in early developmental stages and is expected to reach the key yield formation stages around late July and early August. *(For more information, please contact [Iliana.Mladenova@usda.gov](mailto:Iliana.Mladenova@usda.gov).)*

### Malaysia Palm Oil: MY 2023/24 Estimated Production Increased Due to Continued Favorable Weather

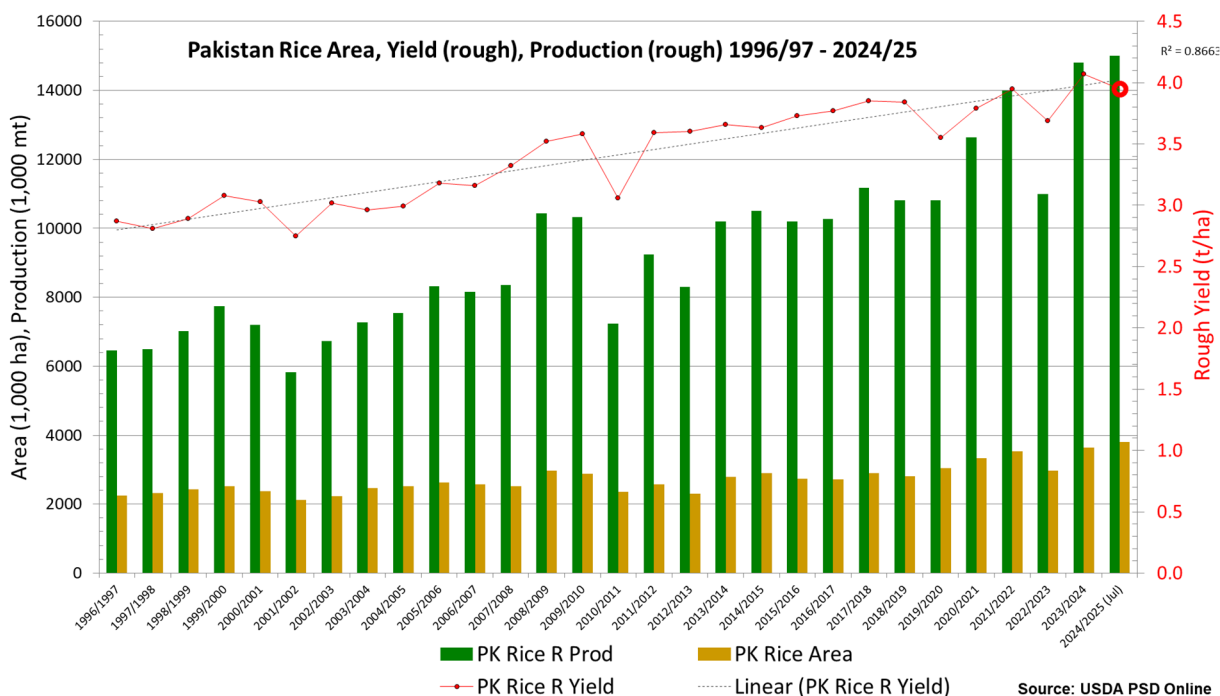
USDA estimates marketing year (MY) 2023/24 Malaysia palm oil production at 19.3 million metric tons, up 1 percent from last month and up 5 percent from last year. Harvested area is estimated at 5.6 million hectares, unchanged from last month, but up 1 percent from last year. Yield is estimated at 3.47 tons per hectare, up 1 percent from last month and up 4 percent from last year.

Malaysia palm oil production is highly dependent on consistent rainfall and stable temperatures. To obtain average yield potential, palm oil requires between 150 to 200 millimeters of monthly water with sustained temperatures between 22 and 33 degrees Celsius.



As a result of abundant rainfall at critical fruiting stages and favorable harvest weather, May crude palm oil output was higher than usual according to the Malaysia Palm Oil Board, resulting in the MY 2023/24 increase. (For more information, please contact [Justin.Jenkins@usda.gov](mailto:Justin.Jenkins@usda.gov).)

### Pakistan Rice: Record Production

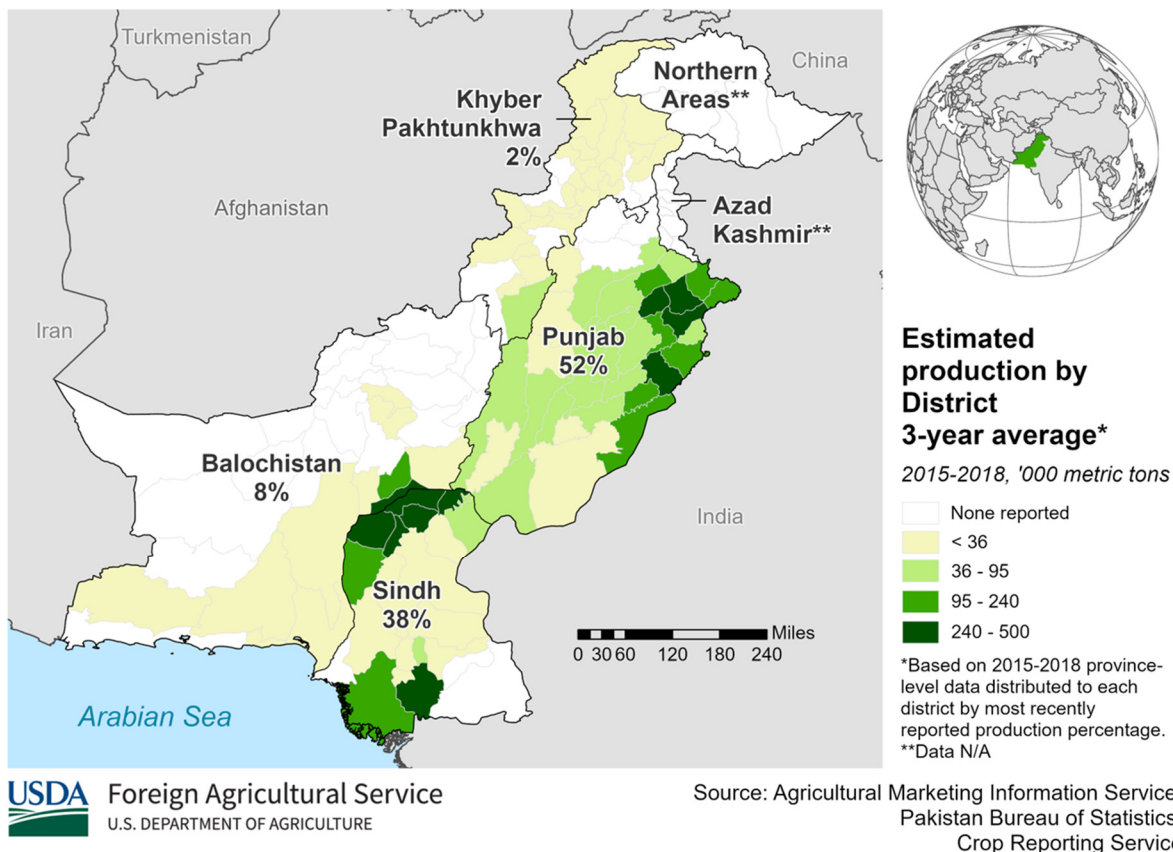


Pakistan rice production for marketing year 2024/25 is estimated at a record 10.0 million metric tons (mmt) (milled basis), up 0.5 mmt (5 percent) from last month, and up 0.13 mmt (1 percent)



from last year. Harvested area is estimated at a record 3.8 million hectares (mha), unchanged from last month, but up 0.16 mha (4 percent) from last year. Yield is estimated at 3.95 tons per hectare (t/ha) on a rough basis, up 5 percent from last month, but down 3 percent from last year. Production is revised up based on the estimated month-to-month yield increase.

## Pakistan: Rice Production



Rice is grown under irrigated conditions with the Tarbela reservoir providing most of the irrigation water. Pakistan is a leading producer and exporter of Basmati and IRRI rice (white long grain rice). Rice ranks second among the staple food grain crops in Pakistan and exports are a major source of foreign exchange earnings. Pakistan has two major rice-producing provinces, namely Punjab and Sindh. Both provinces account for nearly 90 percent of total rice production. Punjab, due to its agroclimatic and soil conditions, produces nearly 100 percent of the Basmati rice in the country. (For more information, please contact [James.Crutchfield@usda.gov](mailto:James.Crutchfield@usda.gov).)



**World Agricultural Production  
U.S. Department of Agriculture**

Foreign Agricultural Service / Global Market Analysis  
International Production Assessment Division (IPAD)  
Ag Box 1051, Room 4630, South Building  
Washington, DC 20250-1051

<https://ipad.fas.usda.gov/>

Telephone: (202) 720-1662 Fax: (202) 720-1158

This report uses information from the Foreign Agricultural Service’s (FAS) global network of agricultural attachés and counselors, official statistics of foreign governments and other foreign source materials, and the analysis of economic data and satellite imagery. Estimates of foreign area, yield, and production are from the International Production Assessment Division, FAS, and are reviewed by USDA’s Inter-Agency Commodity Estimates Committee. Estimates of U.S. area, yield, and production are from USDA’s National Agricultural Statistics Service. Numbers within the report may not add to totals because of rounding. This report reflects official USDA estimates released in the World Agricultural Supply and Demand Estimates (WASDE-584), July 12, 2024.

**Printed copies are available from the National Technical Information Service. Download an order form at [http://www.ntis.gov/products/specialty/usda/fas\\_a-g.asp](http://www.ntis.gov/products/specialty/usda/fas_a-g.asp), or call NTIS at 1-800-363-2068.**

The FAS International Production Assessment Division prepared this report. The next issue of World Agricultural Production will be released after 12:00 p.m. Eastern Time, August 12, 2024.

**Conversion Table**

Metric tons to bushels

Wheat, soybeans	=	MT * 36.7437
Corn, sorghum, rye	=	MT * 39.36825
Barley	=	MT * 45.929625
Oats	=	MT * 68.894438

Metric tons to 480-lb bales

Cotton	=	MT * 4.592917
--------	---	---------------

Metric tons to hundredweight

Rice	=	MT * 22.04622
------	---	---------------

Area & weight

1 hectare	=	2.471044 acres
1 kilogram	=	2.204622 pounds



For further information, contact:  
**U.S. Department of Agriculture**  
**Foreign Agricultural Service**  
**Global Market Analysis**

International Production Assessment Division  
 Ag Box 1051, Room 4630, South Building  
 Washington, DC 20250-1051

Telephone: (202) 720-1662

Fax: (202) 720-1158

**GENERAL INFORMATION**

Senior Director	Ronald Frantz	202-720-4056	ronald.frantz@usda.gov
Director	Robert Tetrault	202-720-1071	robert.tetrault@usda.gov
USDA Remote Sensing Advisor	Vacant		
Sr. Analyst/Technical Lead	Curt Reynolds, Ph.D.	202-690-0134	curt.reynolds@usda.gov
Sr. Analyst/ Satellite Imagery Archives Manager/Technical Lead	Dath Mita, Ph.D.	202-720-7339	dath.mita@usda.gov
Sr. Analyst/Technical Lead	Jim Crutchfield	202-690-0135	james.crutchfield@usda.gov
GIS Mapping/Imagery Analyst	Lisa Colson	202-720-6652	lisa.colson@usda.gov
WAP Coordinators	Shannon Moyo	771-221-5973	shannon.moyo@usda.gov
	Vacant		

**ANALYSIS REGIONS**

**ANALYST**

**CONTACT INFORMATION**

Brazil	Aaron Mulhollen	202-690-0131	aaron.mulhollen@usda.gov
South America (except Brazil)	Katie McGaughey	202-720-9210	katie.mcgaughey@usda.gov
Europe, North Africa, and Middle East	Bryan Purcell	202-690-0138	bryan.purcell@usda.gov
India and South Asia	Arnella Trent	202-720-0881	arnella.trent@usda.gov
China and East Asia	Dath Mita, Ph.D.	202-720-7339	dath.mita@usda.gov
South Africa and Sub-Saharan Africa	Curt Reynolds, Ph.D.	202-690-0134	curt.reynolds@usda.gov
Indonesia and South East Asia	Justin Jenkins	202-720-0419	justin.jenkins@usda.gov
Mexico and Central America	Lisa Colson	202-720-6652	lisa.colson@usda.gov
Australia, Pakistan, and Central Asia	Jim Crutchfield	202-690-0135	james.crutchfield@usda.gov
Canada and the Caribbean	Shannon Moyo	771-221-5973	shannon.moyo@usda.gov
Russia, Ukraine, Kazakhstan, Moldova, and Belarus	Iliana Mladenova, Ph.D.	202-690-2315	iliana.mladenova@usda.gov



The Foreign Agricultural Service (FAS) updates its production, supply and distribution (PSD) database for cotton, oilseeds, and grains at 12:00 p.m. on the day the *World Agricultural Supply and Demand Estimates* (WASDE) report is released. This circular is released by 12:15 p.m.

## FAS Reports and Databases:

### World Agricultural Production

Current: <https://www.fas.usda.gov/data/world-agricultural-production>

Archive: <https://usda.library.cornell.edu/concern/publications/5q47rn72z?locale=en>

USDA's Foreign Agricultural Service (FAS) publishes a monthly report on crop acreage, yield and production in major countries worldwide. Sources include reporting from FAS's worldwide offices, official statistics of foreign governments, and analysis of economic data and satellite imagery. The reports reflect official USDA estimates released in the monthly *World Agricultural Supply and Demand Estimates* (WASDE).

### World Markets and Trade

Current: <https://www.fas.usda.gov/data>

Archive:

[https://usda.library.cornell.edu/catalog?f%5Bmember\\_of\\_collections\\_ssim%5D%5B%5D=Foreign+Agricultural+Service&locale=en](https://usda.library.cornell.edu/catalog?f%5Bmember_of_collections_ssim%5D%5B%5D=Foreign+Agricultural+Service&locale=en)

USDA's Foreign Agricultural Service (FAS) publishes monthly and quarterly reports which include data on U.S. and global trade, production, consumption and stocks, as well as analysis of developments affecting world trade in oilseeds, grains, cotton, livestock and poultry. The reports reflect official USDA estimates released in the monthly *World Agricultural Supply and Demand Estimates* (WASDE).

### Global Agricultural Information Network (GAIN)

<https://gain.fas.usda.gov/>

USDA's Foreign Agricultural Service (FAS) provides timely reports on foreign markets through the Global Agriculture Information Network (GAIN) database. An average of 2,000 reports are added each year, with reports going back to 1995. GAIN reports are compiled by FAS' global market intelligence network, which includes FAS foreign service officers and locally engaged staff in over 90 overseas offices world-wide. They provide on-the-ground intelligence, insight, and analysis on nearly 200 countries, delivering information on foreign agricultural markets, crop conditions, and agro-political dynamics of interest to U.S. agriculture. GAIN reports contain assessments of commodity and trade issues made by USDA staff and are not necessarily statements of official U.S. government policy.

### Production, Supply and Distribution (PS&D) Online

<https://apps.fas.usda.gov/psdonline/app/index.html#/app/home>

PSD Online is the public repository for USDA's Official Production, Supply and Distribution forecast data and reports for key agricultural commodities. PSD Online data are reviewed and updated monthly by an interagency committee chaired by USDA's World Agricultural Outlook Board (WAOB). The committee consist of representatives from Foreign Agricultural Service (FAS), the Economic Research Service (ERS), the Farm Service Agency (FSA), and the Agricultural Marketing Service (AMS).

### EU Countries and Russia Wheat: Area and Production Estimates

<https://apps.fas.usda.gov/psdonline/app/index.html#/app/downloads> (click on PSD Datasets)

USDA's Foreign Agricultural Service (FAS) provides country-level area and production estimates for the nations of the European Union. For Russia, country-level area and production estimates are provided for Winter and Spring wheat. These datasets are reviewed and updated monthly by an interagency committee chaired by USDA's World Agricultural Outlook Board (WAOB) and can be downloaded through PSD datasets on PSD Online.





## FAS Reports and Databases:

### **International Production Assessment (IPAD)**

<https://ipad.fas.usda.gov/>

USDA's Foreign Agricultural Service (FAS) maintains a dynamic global crop production portal with key information including *World Agricultural Production* (WAP) briefs, Commodity Intelligence Reports (CIR), geospatial applications, crop production maps at a subnational level and crop calendars for the top-20 producing countries. Additionally, Crop Explorer (<https://ipad.fas.usda.gov/cropexplorer/>) displays rainfall, temperature, evapotranspiration, soil moisture, snow cover, and vegetation conditions in charts and maps.

### **USDA and NASA Global Agricultural Monitoring (GLAM)**

<https://glam1.gsfc.nasa.gov/>

The USDA and NASA Global Agricultural Monitoring (GLAM) system provides near real-time and science quality Moderate Resolution Imaging Spectroradiometer (MODIS) Normalized Difference Vegetation Index (NDVI) from the satellites Terra and Aqua. The public can view and retrieve MODIS 8-day composited, global NDVI satellite imagery and time series data. GLAM was developed by NASA's Global Inventory Modeling and Mapping Studies (GIMMS) group for USDA's Foreign Agricultural Service.

### **Global Agricultural and Disaster Assessment System (GADAS)**

<https://geo.fas.usda.gov/GADAS/index.html>

USDA's Foreign Agricultural Service (FAS) provides the Global Agricultural and Disaster Assessment System (GADAS), a web-based Geographic Information System (GIS) tool which integrates a vast array of highly detailed earth observation data streams, particularly targeted towards agricultural and disaster assessment analysis. GADAS is an interactive website which provides analysts with a wide variety of routine geospatial products (maps, charts, tables) they require for comprehensive situational investigations and recurring assessments.

### **Export Sales Reporting**

<https://apps.fas.usda.gov/esrquery/>

USDA's Export Sales Reporting Program monitors U.S. agricultural export sales on a daily and weekly basis. Export sales reporting provides a constant stream of up-to-date market information for 40 U.S. agricultural commodities sold abroad. The weekly U.S. Export Sales report is the most currently available source of U.S. exports sales data. The data is used to analyze overall levels of export demand, determine where markets exit, and assess the relative position of U.S. commodities in foreign markets.

### **Global Agricultural Trade System (GATS)**

<https://apps.fas.usda.gov/gats/default.aspx>

The Global Agricultural Trade System (GATS) is a searchable database containing monthly U.S. Census Bureau trade data organized by agricultural commodity and agricultural related product groups. Trade data is searchable by partner countries and partner groups. Historical U.S. agricultural trade data is available back to 1967. In addition, U.N. trade statistics (UN Comtrade) may be queried through GATS. UN trade data is available for nearly 200 countries or areas, dating from the inception of the Harmonized System (HS) of trade codes in 1989 to present. The database is continuously updated. U.S. trade data is updated monthly according to the U.S. Census Bureau's reporting system. UN Comtrade data are updated in GATS after nationally submitted data to the UN are standardized by the UN Statistical Division and added to the UN Comtrade database.

## **Other USDA Reports:**

World Agricultural Supply and Demand Estimates (WASDE):

<http://www.usda.gov/oce/commodity/wasde/>

Economic Research Service:

<http://www.ers.usda.gov/topics/crops>

National Agricultural Statistics Service:

<http://www.nass.usda.gov/Publications/>

**Table 01 World Crop Production Summary**

Million Metric Tons

Commodity	World -	Total Foreign	North America			Former Soviet		European	Asia (WAP)					South America		Selected Other			All Others
			United States	Canada -	Mexico -	Russia -	Ukraine -		China -	India -	Indonesia	Pakistan	Thailand	Argentina	Brazil -	Australia	South Africa	Turkey -	
---Million metric tons---																			
<b>Wheat</b>																			
2022/23	789.0	744.1	44.9	34.3	3.6	92.0	21.5	nr	137.7	104.0	0.0	26.2	0.0	12.6	10.6	40.5	2.1	17.3	241.7
2023/24 prel.	789.0	739.6	49.3	32.0	3.5	91.5	23.0	nr	136.6	110.6	0.0	28.2	0.0	15.9	8.1	26.0	2.1	21.0	241.4
2024/25 proj.																			
Jun	790.8	739.7	51.0	34.0	3.4	83.0	19.5	nr	140.0	114.0	0.0	30.0	0.0	17.5	9.5	29.0	2.1	19.0	238.7
Jul	796.2	741.5	54.7	35.0	2.8	83.0	19.5	nr	140.0	114.0	0.0	31.4	0.0	18.0	9.5	29.0	2.1	19.0	238.2
<b>Coarse Grains</b>																			
2022/23	1,451.5	1,095.1	356.4	30.5	33.9	44.1	33.9	nr	285.7	56.8	12.4	11.5	5.3	42.9	143.5	18.8	17.5	14.8	343.4
2023/24 prel.	1,500.2	1,097.3	402.9	27.2	27.8	42.5	38.3	nr	297.1	56.0	12.7	10.4	5.4	60.4	128.5	14.5	14.5	17.0	344.9
2024/25 proj.																			
Jun	1,511.2	1,119.4	391.8	28.7	30.4	40.4	33.5	nr	300.3	56.0	13.2	10.0	5.5	59.5	133.8	15.4	17.5	15.1	360.3
Jul	1,512.4	1,114.9	397.5	27.1	30.4	39.2	33.5	nr	300.3	56.0	13.2	10.0	5.5	59.5	133.8	15.4	17.5	15.1	358.5
<b>Rice, Milled</b>																			
2022/23	515.8	510.7	5.1	0.0	0.1	0.6	0.0	nr	145.9	135.8	33.9	7.3	20.9	0.8	6.8	0.4	0.0	0.6	157.6
2023/24 prel.	520.9	513.9	6.9	0.0	0.2	0.7	0.0	nr	144.6	137.0	33.0	9.9	20.0	0.8	7.0	0.4	0.0	0.5	159.8
2024/25 proj.																			
Jun	527.6	520.6	7.0	0.0	0.2	0.7	0.0	nr	146.0	138.0	34.0	9.5	20.1	0.9	7.5	0.5	0.0	0.6	162.7
Jul	528.2	521.1	7.0	0.0	0.2	0.7	0.0	nr	146.0	138.0	34.0	10.0	20.1	0.9	7.5	0.5	0.0	0.6	162.7
<b>Total Grains</b>																			
2022/23	2,756.4	2,350.0	406.4	64.9	37.6	136.7	55.4	nr	569.4	296.5	46.3	45.0	26.2	56.2	160.9	59.8	19.6	32.7	742.7
2023/24 prel.	2,810.0	2,350.9	459.1	59.1	31.4	134.7	61.3	nr	578.4	303.6	45.7	48.4	25.4	77.1	143.6	41.0	16.6	38.6	746.1
2024/25 proj.																			
Jun	2,829.6	2,379.8	449.8	62.7	33.9	124.1	53.0	nr	586.3	308.0	47.2	49.5	25.6	77.9	150.8	44.8	19.6	34.6	761.7
Jul	2,836.7	2,377.5	459.2	62.1	33.3	122.9	53.0	nr	586.3	308.0	47.2	51.4	25.6	78.4	150.8	44.8	19.6	34.6	759.4
<b>Oilseeds</b>																			
2022/23	637.8	512.0	125.8	25.3	0.9	26.6	19.8	nr	67.9	42.3	15.0	2.7	1.0	31.5	166.9	9.8	3.8	4.0	94.6
2023/24 prel.	657.2	535.0	122.2	25.9	0.6	28.1	24.5	nr	69.1	41.7	15.1	3.7	1.0	55.6	158.8	7.0	2.8	3.1	98.0
2024/25 proj.																			
Jun	685.8	554.6	131.2	26.4	0.6	28.1	23.9	nr	67.5	43.1	15.1	3.5	1.0	56.8	175.7	6.8	3.9	3.5	98.8
Jul	686.1	554.6	131.5	27.0	0.6	27.4	23.7	nr	67.8	43.1	15.1	3.3	1.0	56.8	175.7	6.8	3.9	3.5	99.0
<b>Cotton</b>																			
2022/23	116.4	101.9	14.5	0.0	1.6	0.0	0.0	1.6	30.7	26.3	0.0	3.9	0.0	1.2	11.7	5.8	0.1	4.9	14.2
2023/24 prel.	113.7	101.6	12.1	0.0	0.9	0.0	0.0	1.1	27.5	26.2	0.0	6.7	0.0	1.5	14.6	5.0	0.1	3.2	15.0
2024/25 proj.																			
Jun	119.1	103.1	16.0	0.0	0.8	0.0	0.0	1.4	27.0	25.0	0.0	6.5	0.0	1.6	16.7	5.0	0.1	4.0	15.2
Jul	120.2	103.2	17.0	0.0	0.8	0.0	0.0	1.4	27.5	25.0	0.0	6.0	0.0	1.6	16.7	5.0	0.1	4.0	15.2

1/ Includes wheat, coarse grains, and rice (milled) shown above.

**Table 02 Wheat Area, Yield, and Production**

Country / Region	Area (Million hectares)				Yield (Metric tons per hectare)				Production (Million metric tons)				Change in Production			
	2022/23	Prel.	2024/25 Proj.		2022/23	Prel.	2024/25 Proj.		2022/23	Prel.	2024/25 Proj.		From last month		From last year	
		2023/24	Jun	Jul		2023/24	Jun	Jul		2023/24	Jun	Jul	MMT	Percent	MMT	Percent
<b>World</b>	219.58	222.77	221.80	222.12	3.59	3.54	3.57	3.58	789.01	788.95	790.75	796.19	5.44	0.69	7.23	0.92
<b>United States</b>	14.36	15.08	15.37	15.70	3.13	3.27	3.32	3.48	44.90	49.31	51.02	54.66	3.64	7.12	5.35	10.84
<b>Total Foreign</b>	205.22	207.69	206.43	206.43	3.63	3.56	3.58	3.59	744.12	739.64	739.73	741.53	1.80	0.24	1.89	0.26
<b>European Union</b>	24.40	24.20	23.40	23.35	5.50	5.54	5.58	5.57	134.29	134.15	130.50	130.00	-0.50	-0.38	-4.15	-3.09
<b>United Kingdom</b>	1.81	1.72	1.40	1.40	8.57	8.13	7.75	7.75	15.54	13.98	10.85	10.85	0.00	0.00	-3.13	-22.39
<b>Serbia</b>	0.62	0.73	0.63	0.63	5.32	4.69	4.80	4.80	3.30	3.40	3.00	3.00	0.00	0.00	-0.40	-11.76
<b>China</b>	23.52	23.63	23.70	23.70	5.86	5.78	5.91	5.91	137.72	136.59	140.00	140.00	0.00	0.00	3.41	2.50
<b>South Asia</b>																
India	30.46	31.40	31.30	31.30	3.41	3.52	3.64	3.64	104.00	110.55	114.00	114.00	0.00	0.00	3.45	3.12
Pakistan	8.98	9.03	9.60	9.63	2.92	3.12	3.13	3.26	26.21	28.16	30.00	31.40	1.40	4.67	3.24	11.50
Afghanistan	1.86	2.35	2.30	2.30	2.05	2.20	2.26	2.26	3.80	5.17	5.20	5.20	0.00	0.00	0.03	0.58
Nepal	0.72	0.72	0.72	0.72	2.98	2.90	2.90	2.90	2.15	2.09	2.09	2.09	0.00	0.00	0.00	0.00
<b>Former Soviet Union - 12</b>																
Russia	29.00	28.83	28.10	28.10	3.17	3.17	2.95	2.95	92.00	91.50	83.00	83.00	0.00	0.00	-8.50	-9.29
Russia Winter	16.30	15.27	15.60	15.60	4.17	4.19	3.78	3.78	68.00	64.00	59.00	59.00	0.00	0.00	-5.00	-7.81
Russia Spring	12.70	13.56	12.50	12.50	1.89	2.03	1.92	1.92	24.00	27.50	24.00	24.00	0.00	0.00	-3.50	-12.73
Ukraine	5.60	5.01	4.70	4.70	3.84	4.59	4.15	4.15	21.50	23.00	19.50	19.50	0.00	0.00	-3.50	-15.22
Kazakhstan	12.81	13.13	13.20	13.20	1.28	0.92	1.10	1.10	16.40	12.11	14.50	14.50	0.00	0.00	2.39	19.73
Uzbekistan	1.26	1.40	1.30	1.30	4.99	4.62	5.15	5.15	6.27	6.46	6.70	6.70	0.00	0.00	0.24	3.68
Belarus	0.68	0.68	0.69	0.69	3.48	3.38	3.80	3.80	2.35	2.30	2.60	2.60	0.00	0.00	0.30	13.04
<b>Canada</b>	10.08	10.68	10.70	10.60	3.41	2.99	3.18	3.30	34.34	31.95	34.00	35.00	1.00	2.94	3.05	9.53
<b>South America</b>																
Argentina	5.50	5.58	5.80	6.00	2.28	2.84	3.02	3.00	12.55	15.85	17.50	18.00	0.50	2.86	2.15	13.56
Brazil	3.09	3.47	3.50	3.50	3.42	2.33	2.71	2.71	10.55	8.10	9.50	9.50	0.00	0.00	1.40	17.28
<b>Australia</b>	13.05	12.50	12.50	12.50	3.11	2.08	2.32	2.32	40.55	26.00	29.00	29.00	0.00	0.00	3.00	11.54
<b>Africa</b>																
Egypt	1.45	1.35	1.40	1.40	6.55	6.57	6.57	6.57	9.50	8.87	9.20	9.20	0.00	0.00	0.33	3.72
Morocco	2.44	2.50	2.20	2.20	1.11	1.66	1.14	1.14	2.71	4.16	2.50	2.50	0.00	0.00	-1.66	-39.90
Algeria	1.80	1.80	1.80	1.80	2.00	1.50	1.67	1.67	3.60	2.70	3.00	3.00	0.00	0.00	0.30	11.11
Ethiopia	1.90	1.86	1.90	1.90	3.05	3.01	3.00	3.00	5.80	5.60	5.70	5.70	0.00	0.00	0.10	1.79
<b>Middle East</b>																
Turkey	6.80	7.20	7.25	7.25	2.54	2.92	2.62	2.62	17.25	21.00	19.00	19.00	0.00	0.00	-2.00	-9.52
Iran	6.20	6.20	6.20	6.20	2.13	2.26	2.34	2.34	13.20	14.00	14.50	14.50	0.00	0.00	0.50	3.57
Iraq	2.10	2.60	2.70	2.70	1.52	2.00	2.11	2.11	3.20	5.20	5.70	5.70	0.00	0.00	0.50	9.62
Syria	1.18	1.20	1.30	1.30	1.31	2.00	2.15	2.15	1.55	2.40	2.80	2.80	0.00	0.00	0.40	16.67
<b>Mexico</b>	0.60	0.56	0.56	0.48	6.06	6.21	6.07	5.83	3.61	3.48	3.40	2.80	-0.60	-17.65	-0.68	-19.45
<b>Others</b>	7.33	7.37	7.59	7.59	2.75	2.83	2.90	2.90	20.18	20.86	21.99	21.99	0.00	0.00	1.13	5.40

**Table 03 Total Coarse Grain Area, Yield, and Production**

Country / Region	Area (Million hectares)				Yield (Metric tons per hectare)				Production (Million metric tons)				Change in Production			
	Prel.		2024/25 Proj.		Prel.		2024/25 Proj.		Prel.		2024/25 Proj.		From last month		From last year	
	2022/23	2023/24	Jun	Jul	2022/23	2023/24	Jun	Jul	2022/23	2023/24	Jun	Jul	MMT	Percent	MMT	Percent
<b>World</b>	336.38	336.70	336.17	336.09	4.32	4.46	4.50	4.50	1,451.54	1,500.19	1,511.18	1,512.38	1.20	0.08	12.20	0.81
<b>United States</b>	35.18	38.99	36.75	37.27	10.13	10.33	10.66	10.67	356.45	402.89	391.77	397.53	5.75	1.47	-5.36	-1.33
<b>Total Foreign</b>	301.21	297.71	299.43	298.82	3.64	3.69	3.74	3.73	1,095.09	1,097.30	1,119.41	1,114.86	-4.56	-0.41	17.56	1.60
<b>China</b>	45.55	46.65	47.14	47.14	6.27	6.37	6.37	6.37	285.70	297.14	300.30	300.30	0.00	0.00	3.16	1.06
<b>European Union</b>	26.58	25.97	26.56	26.56	5.00	5.24	5.55	5.49	132.96	135.96	147.49	145.69	-1.80	-1.22	9.73	7.15
<b>United Kingdom</b>	1.37	1.38	1.47	1.47	6.33	5.87	5.92	5.92	8.67	8.08	8.73	8.73	0.00	0.00	0.65	8.01
<b>South America</b>																
Brazil	24.48	23.71	24.56	24.56	5.86	5.42	5.45	5.45	143.48	128.54	133.76	133.76	0.00	0.00	5.22	4.06
Argentina	9.21	9.28	8.76	8.76	4.66	6.51	6.79	6.79	42.91	60.38	59.49	59.49	0.00	0.00	-0.89	-1.47
<b>Former Soviet Union - 12</b>																
Russia	13.60	12.88	12.98	12.68	3.25	3.30	3.11	3.09	44.13	42.54	40.43	39.23	-1.20	-2.97	-3.31	-7.78
Ukraine	6.32	6.04	5.72	5.72	5.37	6.34	5.86	5.86	33.93	38.28	33.47	33.47	0.00	0.00	-4.81	-12.57
Kazakhstan	2.63	2.87	2.96	2.96	1.79	1.40	1.50	1.50	4.71	4.01	4.43	4.43	0.00	0.00	0.42	10.58
Belarus	1.03	1.05	1.12	1.12	3.11	3.09	3.21	3.21	3.20	3.23	3.58	3.58	0.00	0.00	0.35	10.84
<b>Africa</b>																
Nigeria	13.50	13.40	13.10	13.10	1.61	1.42	1.53	1.53	21.70	19.01	20.10	20.10	0.00	0.00	1.09	5.72
South Africa	3.13	3.20	3.34	3.34	5.61	4.54	5.25	5.25	17.53	14.51	17.53	17.53	0.00	0.00	3.02	20.83
Tanzania	5.30	5.50	5.50	5.50	1.36	1.40	1.51	1.51	7.23	7.73	8.33	8.33	0.00	0.00	0.60	7.77
Burkina Faso	4.09	4.20	4.20	4.20	1.16	1.10	1.13	1.13	4.73	4.63	4.75	4.75	0.00	0.00	0.12	2.64
Ethiopia	5.45	5.41	5.64	5.64	3.21	3.25	3.18	3.18	17.47	17.56	17.91	17.91	0.00	0.00	0.35	1.99
Egypt	1.10	1.12	1.14	1.14	7.52	7.19	7.43	7.43	8.28	8.07	8.48	8.48	0.00	0.00	0.41	5.08
Mali	5.20	4.80	4.90	4.90	1.38	1.43	1.43	1.43	7.15	6.86	7.00	7.00	0.00	0.00	0.14	2.07
<b>India</b>	23.90	25.23	24.30	24.30	2.38	2.22	2.30	2.30	56.78	56.01	56.00	56.00	0.00	0.00	-0.01	-0.02
<b>Southeast Asia</b>																
Indonesia	3.50	3.70	3.80	3.80	3.54	3.43	3.47	3.47	12.40	12.70	13.20	13.20	0.00	0.00	0.50	3.94
Philippines	2.54	2.50	2.60	2.60	3.28	3.24	3.27	3.27	8.32	8.10	8.50	8.50	0.00	0.00	0.40	4.94
Vietnam	0.89	0.87	0.85	0.85	4.99	5.00	5.06	5.06	4.42	4.35	4.30	4.30	0.00	0.00	-0.05	-1.15
Thailand	1.21	1.25	1.26	1.26	4.35	4.29	4.34	4.34	5.25	5.35	5.45	5.45	0.00	0.00	0.10	1.87
<b>Mexico</b>	8.64	7.65	8.05	8.05	3.92	3.64	3.77	3.77	33.88	27.82	30.36	30.36	0.00	0.00	2.55	9.15
<b>Canada</b>	5.74	5.24	5.30	4.99	5.32	5.19	5.42	5.43	30.54	27.16	28.68	27.12	-1.56	-5.44	-0.05	-0.18
<b>Australia</b>	5.69	5.63	5.86	5.86	3.31	2.58	2.62	2.62	18.84	14.54	15.37	15.37	0.00	0.00	0.83	5.67
<b>Middle East</b>																
Turkey	4.57	4.59	4.55	4.55	3.25	3.72	3.31	3.31	14.84	17.05	15.06	15.06	0.00	0.00	-1.99	-11.65
Iran	1.86	1.86	1.81	1.81	2.38	2.38	2.50	2.50	4.42	4.42	4.52	4.52	0.00	0.00	0.10	2.26
<b>Others</b>	74.16	71.76	72.00	71.99	1.64	1.72	1.70	1.70	121.64	123.28	122.20	122.21	0.01	0.00	-1.07	-0.87

World and Selected Countries and Regions; Coarse Grain includes: Barley, Corn, Millet, Mixed Grains, Oats, Rye and Sorghum

**Table 04 Corn Area, Yield, and Production**

Country / Region	Area (Million hectares)				Yield (Metric tons per hectare)				Production (Million metric tons)				Change in Production			
	Prel.		2024/25 Proj.		Prel.		2024/25 Proj.		Prel.		2024/25 Proj.		From last month		From last year	
	2022/23	2023/24	Jun	Jul	2022/23	2023/24	Jun	Jul	2022/23	2023/24	Jun	Jul	MMT	Percent	MMT	Percent
<b>World</b>	200.72	203.14	201.25	201.74	5.78	6.03	6.06	6.07	1,159.60	1,225.45	1,220.54	1,224.79	4.25	0.35	-0.66	-0.05
<b>United States</b>	31.85	35.01	33.23	33.77	10.89	11.13	11.36	11.36	346.74	389.69	377.46	383.56	6.10	1.62	-6.14	-1.57
<b>Total Foreign</b>	168.87	168.13	168.03	167.98	4.81	4.97	5.02	5.01	812.87	835.76	843.08	841.23	-1.85	-0.22	5.47	0.65
<b>China</b>	43.07	44.22	44.70	44.70	6.44	6.53	6.53	6.53	277.20	288.84	292.00	292.00	0.00	0.00	3.16	1.09
<b>South America</b>																
Brazil	22.40	21.50	22.30	22.30	6.12	5.67	5.70	5.70	137.00	122.00	127.00	127.00	0.00	0.00	5.00	4.10
Argentina	6.75	7.00	6.40	6.40	5.33	7.43	7.97	7.97	36.00	52.00	51.00	51.00	0.00	0.00	-1.00	-1.92
Bolivia	0.44	0.43	0.42	0.42	2.52	2.62	2.56	2.56	1.10	1.13	1.08	1.08	0.00	0.00	-0.05	-4.44
<b>European Union</b>	8.85	8.28	8.65	8.65	5.91	7.37	7.49	7.40	52.29	61.00	64.80	64.00	-0.80	-1.23	3.00	4.92
<b>Africa</b>																
South Africa	2.95	3.00	3.15	3.15	5.81	4.67	5.40	5.40	17.10	14.00	17.00	17.00	0.00	0.00	3.00	21.43
Nigeria	5.80	5.70	5.10	5.10	2.23	1.94	2.16	2.16	12.95	11.05	11.00	11.00	0.00	0.00	-0.05	-0.48
Ethiopia	2.55	2.50	2.55	2.55	4.00	4.00	4.00	4.00	10.20	10.00	10.20	10.20	0.00	0.00	0.20	2.00
Egypt	0.93	0.95	0.97	0.97	8.00	7.58	7.84	7.84	7.44	7.20	7.60	7.60	0.00	0.00	0.40	5.56
Tanzania	4.00	4.20	4.20	4.20	1.48	1.52	1.67	1.67	5.90	6.40	7.00	7.00	0.00	0.00	0.60	9.38
Malawi	1.82	1.79	1.50	1.50	2.05	1.96	1.33	1.33	3.72	3.51	2.00	2.00	0.00	0.00	-1.51	-43.02
Zambia	1.12	1.42	0.69	0.69	2.43	2.30	2.20	2.20	2.71	3.26	1.51	1.51	0.00	0.00	-1.75	-53.72
Kenya	2.16	2.00	2.00	2.00	1.43	1.85	1.85	1.85	3.09	3.70	3.70	3.70	0.00	0.00	0.00	0.00
Uganda	1.10	1.10	1.10	1.10	2.55	2.55	2.55	2.55	2.80	2.80	2.80	2.80	0.00	0.00	0.00	0.00
Zimbabwe	1.00	1.00	0.90	0.90	1.45	1.50	0.61	0.61	1.45	1.50	0.55	0.55	0.00	0.00	-0.95	-63.33
<b>Former Soviet Union - 12</b>																
Ukraine	4.05	4.00	3.90	3.90	6.67	7.75	7.10	7.10	27.00	31.00	27.70	27.70	0.00	0.00	-3.30	-10.65
Russia	2.64	2.40	2.50	2.50	6.00	6.92	6.16	6.00	15.83	16.60	15.40	15.00	-0.40	-2.60	-1.60	-9.64
<b>South Asia</b>																
India	10.74	11.00	11.00	11.00	3.54	3.41	3.41	3.41	38.09	37.50	37.50	37.50	0.00	0.00	0.00	0.00
Pakistan	1.72	1.64	1.50	1.50	6.39	6.00	6.33	6.33	10.99	9.85	9.50	9.50	0.00	0.00	-0.35	-3.52
Nepal	0.97	0.97	0.97	0.97	2.82	2.82	2.82	2.82	2.72	2.72	2.72	2.72	0.00	0.00	0.00	0.00
<b>Southeast Asia</b>																
Indonesia	3.50	3.70	3.80	3.80	3.54	3.43	3.47	3.47	12.40	12.70	13.20	13.20	0.00	0.00	0.50	3.94
Philippines	2.54	2.50	2.60	2.60	3.28	3.24	3.27	3.27	8.32	8.10	8.50	8.50	0.00	0.00	0.40	4.94
Vietnam	0.89	0.87	0.85	0.85	4.99	5.00	5.06	5.06	4.42	4.35	4.30	4.30	0.00	0.00	-0.05	-1.15
Thailand	1.18	1.22	1.23	1.23	4.41	4.34	4.39	4.39	5.20	5.30	5.40	5.40	0.00	0.00	0.10	1.89
<b>Mexico</b>	6.89	6.10	6.40	6.40	4.07	3.72	3.91	3.91	28.08	22.70	25.00	25.00	0.00	0.00	2.30	10.13
<b>Canada</b>	1.44	1.52	1.50	1.45	10.07	9.92	10.00	10.00	14.54	15.08	15.00	14.50	-0.50	-3.33	-0.58	-3.82
<b>Turkey</b>	0.53	0.65	0.56	0.56	12.83	12.92	13.04	13.04	6.80	8.40	7.30	7.30	0.00	0.00	-1.10	-13.10
<b>Others</b>	26.87	26.48	26.60	26.60	2.51	2.76	2.72	2.71	67.54	73.07	72.33	72.18	-0.15	-0.21	-0.90	-1.23

World and Selected Countries and Regions



**Table 05 Barley Area, Yield, and Production**

Country / Region	Area (Million hectares)				Yield (Metric tons per hectare)				Production (Million metric tons)				Change in Production			
	Prel.		2024/25 Proj.		Prel.		2024/25 Proj.		Prel.		2024/25 Proj.		From last month		From last year	
	2022/23	2023/24	Jun	Jul	2022/23	2023/24	Jun	Jul	2022/23	2023/24	Jun	Jul	MMT	Percent	MMT	Percent
<b>World</b>	47.12	46.65	46.85	46.27	3.20	3.05	3.16	3.14	150.87	142.29	147.96	145.07	-2.89	-1.95	2.78	1.96
<b>United States</b>	0.98	1.03	0.85	0.82	3.86	3.90	4.12	3.99	3.79	4.03	3.51	3.26	-0.25	-7.08	-0.77	-19.16
<b>Total Foreign</b>	46.14	45.62	46.00	45.46	3.19	3.03	3.14	3.12	147.08	138.26	144.45	141.81	-2.64	-1.83	3.55	2.57
<b>European Union</b>	10.31	10.30	10.40	10.40	5.02	4.63	5.17	5.08	51.80	47.70	53.80	52.80	-1.00	-1.86	5.10	10.69
<b>United Kingdom</b>	1.12	1.14	1.20	1.20	6.62	6.12	6.25	6.25	7.39	6.96	7.50	7.50	0.00	0.00	0.54	7.71
<b>Former Soviet Union - 12</b>																
Russia	7.75	7.65	7.30	7.00	2.77	2.68	2.60	2.60	21.50	20.50	19.00	18.20	-0.80	-4.21	-2.30	-11.22
Ukraine	1.95	1.68	1.50	1.50	3.13	3.78	3.33	3.33	6.10	6.35	5.00	5.00	0.00	0.00	-1.35	-21.26
Kazakhstan	2.18	2.43	2.50	2.50	1.51	1.08	1.24	1.24	3.29	2.61	3.10	3.10	0.00	0.00	0.49	18.59
Belarus	0.40	0.40	0.40	0.40	2.75	2.75	3.00	3.00	1.10	1.10	1.20	1.20	0.00	0.00	0.10	9.09
Azerbaijan	0.39	0.36	0.36	0.36	2.85	2.99	3.06	3.06	1.10	1.07	1.10	1.10	0.00	0.00	0.03	3.09
<b>Canada</b>	2.64	2.70	2.60	2.36	3.79	3.30	3.69	3.64	9.99	8.90	9.60	8.60	-1.00	-10.42	-0.30	-3.33
<b>Australia</b>	4.13	4.20	4.40	4.40	3.43	2.57	2.61	2.61	14.14	10.80	11.50	11.50	0.00	0.00	0.70	6.48
<b>Middle East</b>																
Turkey	3.80	3.70	3.75	3.75	1.95	2.16	1.89	1.89	7.40	8.00	7.10	7.10	0.00	0.00	-0.90	-11.25
Iran	1.65	1.65	1.60	1.60	1.82	1.82	1.94	1.94	3.00	3.00	3.10	3.10	0.00	0.00	0.10	3.33
Iraq	0.21	0.16	1.00	1.00	1.12	1.29	1.40	1.40	0.24	0.20	1.40	1.40	0.00	0.00	1.20	600.00
Syria	1.12	1.10	1.10	1.10	0.16	0.45	1.09	1.09	0.18	0.50	1.20	1.20	0.00	0.00	0.70	140.00
<b>Africa</b>																
Ethiopia	0.98	0.98	0.98	0.98	2.22	2.50	2.54	2.54	2.18	2.45	2.49	2.49	0.00	0.00	0.04	1.43
Morocco	1.14	1.17	0.80	0.80	0.61	1.15	0.63	0.83	0.70	1.35	0.50	0.66	0.16	32.00	-0.69	-51.11
Algeria	1.03	1.03	1.03	1.03	1.37	1.00	1.17	1.17	1.40	1.03	1.20	1.20	0.00	0.00	0.18	17.07
Tunisia	0.30	0.11	0.35	0.35	1.53	0.82	1.57	1.57	0.46	0.09	0.55	0.55	0.00	0.00	0.46	517.98
South Africa	0.10	0.11	0.11	0.11	2.99	3.49	3.36	3.36	0.30	0.38	0.37	0.37	0.00	0.00	-0.01	-1.86
<b>South America</b>																
Argentina	1.59	1.30	1.25	1.25	2.95	3.92	3.76	3.76	4.70	5.10	4.70	4.70	0.00	0.00	-0.40	-7.84
Uruguay	0.21	0.18	0.19	0.19	4.25	3.89	4.21	4.21	0.90	0.70	0.80	0.80	0.00	0.00	0.10	14.29
Brazil	0.13	0.12	0.14	0.14	3.87	3.79	4.07	4.07	0.50	0.46	0.55	0.55	0.00	0.00	0.10	20.88
<b>India</b>	0.45	0.63	0.50	0.50	3.03	3.05	3.00	3.00	1.37	1.91	1.50	1.50	0.00	0.00	-0.41	-21.59
<b>China</b>	0.56	0.50	0.50	0.50	3.91	4.00	4.00	4.00	2.19	2.00	2.00	2.00	0.00	0.00	0.00	0.00
<b>Mexico</b>	0.30	0.29	0.29	0.29	2.69	2.69	2.69	2.69	0.80	0.78	0.78	0.78	0.00	0.00	0.00	0.00
<b>Afghanistan</b>	0.06	0.08	0.07	0.07	1.53	1.38	1.43	1.43	0.10	0.11	0.10	0.10	0.00	0.00	-0.01	-9.09
<b>Others</b>	1.67	1.68	1.69	1.69	2.57	2.51	2.56	2.56	4.28	4.22	4.32	4.32	0.00	0.00	0.10	2.32

World and Selected Countries and Regions

**Table 06 Oats Area, Yield, and Production**

Country / Region	Area (Million hectares)				Yield (Metric tons per hectare)				Production (Million metric tons)				Change in Production			
	2022/23	Prel.	2024/25 Proj.		2022/23	Prel.	2024/25 Proj.		2022/23	Prel.	2024/25 Proj.		From last month		From last year	
		2023/24	Jun	Jul		2023/24	Jun	Jul		2023/24	Jun	Jul	MMT	Percent	MMT	Percent
<b>World</b>	9.39	8.35	8.86	8.90	2.70	2.32	2.50	2.50	25.32	19.41	22.15	22.26	0.12	0.52	2.85	14.68
<b>United States</b>	0.36	0.34	0.28	0.35	2.35	2.46	2.41	2.54	0.84	0.83	0.68	0.90	0.22	31.67	0.07	8.45
<b>Total Foreign</b>	9.04	8.02	8.57	8.54	2.71	2.32	2.50	2.50	24.49	18.59	21.47	21.37	-0.10	-0.47	2.78	14.96
<b>European Union</b>	2.35	2.29	2.35	2.35	3.19	2.59	3.02	3.02	7.49	5.92	7.10	7.10	0.00	0.00	1.18	19.93
<b>Former Soviet Union - 12</b>																
Russia	2.13	1.77	2.00	2.00	2.11	1.86	1.90	1.90	4.50	3.30	3.80	3.80	0.00	0.00	0.50	15.15
Ukraine	0.15	0.17	0.15	0.15	2.47	2.53	2.33	2.33	0.38	0.43	0.35	0.35	0.00	0.00	-0.08	-18.60
Belarus	0.16	0.16	0.16	0.16	2.42	2.26	2.06	2.06	0.38	0.35	0.32	0.32	0.00	0.00	-0.03	-8.57
Kazakhstan	0.20	0.19	0.21	0.21	1.16	0.79	1.00	1.00	0.23	0.15	0.21	0.21	0.00	0.00	0.06	40.00
<b>Canada</b>	1.40	0.82	1.00	0.97	3.73	3.20	3.50	3.51	5.23	2.64	3.50	3.40	-0.10	-2.86	0.76	28.98
<b>South America</b>																
Argentina	0.26	0.29	0.30	0.30	1.67	2.14	2.00	2.00	0.43	0.61	0.60	0.60	0.00	0.00	-0.01	-1.64
Brazil	0.53	0.52	0.52	0.52	2.22	2.24	2.33	2.33	1.18	1.17	1.20	1.20	0.00	0.00	0.03	2.74
Chile	0.07	0.09	0.10	0.10	4.63	4.71	4.70	4.70	0.33	0.40	0.47	0.47	0.00	0.00	0.07	17.50
Uruguay	0.02	0.01	0.02	0.02	2.40	2.20	2.00	2.00	0.04	0.02	0.03	0.03	0.00	0.00	0.01	36.36
<b>Oceania</b>																
Australia	0.75	0.70	0.73	0.73	2.13	1.57	1.66	1.66	1.59	1.10	1.20	1.20	0.00	0.00	0.10	9.09
New Zealand	0.01	0.00	0.00	0.00	6.60	6.50	6.25	6.25	0.03	0.03	0.03	0.03	0.00	0.00	0.00	-3.85
<b>China</b>	0.41	0.41	0.41	0.41	1.48	1.48	1.48	1.48	0.60	0.60	0.60	0.60	0.00	0.00	0.00	0.00
<b>Africa</b>																
Algeria	0.08	0.08	0.08	0.08	1.31	1.31	1.31	1.31	0.11	0.11	0.11	0.11	0.00	0.00	0.00	0.00
Morocco	0.01	0.02	0.02	0.02	0.31	0.40	0.40	0.40	0.00	0.01	0.01	0.01	0.00	0.00	0.00	0.00
South Africa	0.03	0.03	0.02	0.02	1.04	1.46	1.50	1.50	0.03	0.04	0.03	0.03	0.00	0.00	-0.01	-26.83
<b>Other Europe</b>																
United Kingdom	0.18	0.17	0.20	0.20	5.72	4.97	5.00	5.00	1.01	0.83	1.00	1.00	0.00	0.00	0.17	20.48
Norway	0.06	0.07	0.07	0.07	4.62	4.29	4.29	4.29	0.29	0.30	0.30	0.30	0.00	0.00	0.00	0.00
Serbia	0.02	0.02	0.02	0.02	2.80	3.00	3.00	3.00	0.04	0.06	0.06	0.06	0.00	0.00	0.00	0.00
Albania	0.02	0.02	0.02	0.02	2.27	2.27	2.27	2.27	0.03	0.03	0.03	0.03	0.00	0.00	0.00	0.00
Bosnia and Herzegovina	0.01	0.01	0.01	0.01	4.00	3.43	3.43	3.43	0.04	0.02	0.02	0.02	0.00	0.00	0.00	0.00
<b>Turkey</b>	0.14	0.13	0.13	0.13	2.64	2.60	2.62	2.62	0.37	0.33	0.34	0.34	0.00	0.00	0.02	4.62
<b>Mexico</b>	0.05	0.03	0.04	0.04	2.22	2.20	2.00	2.00	0.11	0.06	0.08	0.08	0.00	0.00	0.03	45.45
<b>Others</b>	0.03	0.06	0.05	0.05	1.63	1.68	1.78	1.78	0.05	0.09	0.08	0.08	0.00	0.00	-0.01	-12.77

World and Selected Countries and Regions

**Table 07 Rye Area, Yield, and Production**

Country / Region	Area (Million hectares)				Yield (Metric tons per hectare)				Production (Million metric tons)				Change in Production			
	2022/23	Prel.	2024/25 Proj.		2022/23	Prel.	2024/25 Proj.		2022/23	Prel.	2024/25 Proj.		From last month		From last year	
		2023/24	Jun	Jul		2023/24	Jun	Jul		2023/24	Jun	Jul	MMT	Percent	MMT	Percent
<b>World</b>	3.68	3.61	3.68	3.71	3.30	3.23	3.23	3.22	12.13	11.65	11.88	11.93	0.05	0.42	0.27	2.33
<b>United States</b>	0.14	0.13	0.12	0.15	2.26	2.03	2.21	2.20	0.32	0.26	0.27	0.34	0.07	26.22	0.07	27.65
<b>Total Foreign</b>	3.54	3.48	3.56	3.55	3.34	3.28	3.26	3.26	11.81	11.39	11.61	11.59	-0.02	-0.17	0.20	1.75
<b>European Union</b>	1.76	1.86	1.80	1.80	4.27	4.10	4.28	4.28	7.53	7.63	7.70	7.70	0.00	0.00	0.07	0.86
<b>Former Soviet Union - 12</b>																
Russia	0.88	0.79	0.90	0.90	2.27	2.15	2.06	2.06	2.00	1.70	1.85	1.85	0.00	0.00	0.15	8.82
Belarus	0.30	0.31	0.32	0.32	2.50	2.52	2.38	2.38	0.75	0.78	0.76	0.76	0.00	0.00	-0.02	-2.56
Ukraine	0.10	0.08	0.08	0.08	3.15	3.00	2.88	2.88	0.32	0.24	0.23	0.23	0.00	0.00	-0.01	-4.17
Kazakhstan	0.03	0.02	0.03	0.03	1.76	0.86	1.17	1.17	0.06	0.02	0.04	0.04	0.00	0.00	0.02	94.44
<b>Turkey</b>	0.10	0.11	0.11	0.11	2.79	2.91	2.91	2.91	0.27	0.32	0.32	0.32	0.00	0.00	0.00	0.00
<b>Canada</b>	0.15	0.12	0.12	0.11	3.42	3.09	3.17	3.14	0.52	0.36	0.37	0.35	-0.02	-5.48	-0.01	-3.63
<b>South America</b>																
Chile	0.00	0.00	0.00	0.00	5.00	0.00	0.00	0.00	0.01	0.00	0.00	0.00	0.00	100.00	0.00	100.00
Argentina	0.11	0.09	0.11	0.11	1.66	1.83	1.76	1.76	0.18	0.17	0.19	0.19	0.00	0.00	0.02	12.12
<b>Other Europe</b>																
Bosnia and Herzegovina	0.00	0.00	0.00	0.00	3.00	3.00	3.00	3.00	0.01	0.01	0.01	0.01	0.00	0.00	0.00	-33.33
Switzerland	0.00	0.00	0.00	0.00	5.00	5.00	5.00	5.00	0.01	0.01	0.01	0.01	0.00	0.00	0.00	0.00
Serbia	0.01	0.01	0.01	0.01	3.00	3.33	3.00	3.00	0.02	0.02	0.02	0.02	0.00	0.00	0.00	-10.00
<b>Australia</b>	0.05	0.05	0.05	0.05	0.71	0.71	0.71	0.71	0.03	0.03	0.03	0.03	0.00	0.00	0.00	0.00
<b>Others</b>	0.05	0.04	0.04	0.04	2.48	2.40	2.20	2.20	0.11	0.10	0.10	0.10	0.00	0.00	-0.01	-5.83

World and Selected Countries and Regions

**Table 08 Sorghum Area, Yield, and Production**

Country / Region	Area (Million hectares)				Yield (Metric tons per hectare)				Production (Million metric tons)				Change in Production			
	Prel.		2024/25 Proj.		Prel.		2024/25 Proj.		Prel.		2024/25 Proj.		From last month		From last year	
	2022/23	2023/24	Jun	Jul	2022/23	2023/24	Jun	Jul	2022/23	2023/24	Jun	Jul	MMT	Percent	MMT	Percent
<b>World</b>	40.64	40.18	41.83	41.75	1.42	1.45	1.52	1.52	57.60	58.37	63.64	63.26	-0.39	-0.61	4.89	8.38
<b>United States</b>	1.85	2.48	2.27	2.18	2.58	3.26	4.35	4.34	4.77	8.07	9.86	9.48	-0.38	-3.87	1.40	17.40
<b>Total Foreign</b>	38.79	37.70	39.57	39.57	1.36	1.33	1.36	1.36	52.83	50.30	53.79	53.78	-0.01	-0.01	3.49	6.94
<b>Africa</b>																
Nigeria	5.70	5.70	6.10	6.10	1.19	1.12	1.18	1.18	6.81	6.40	7.20	7.20	0.00	0.00	0.80	12.50
Ethiopia	1.55	1.48	1.65	1.65	2.67	2.71	2.48	2.48	4.14	4.01	4.10	4.10	0.00	0.00	0.09	2.24
Sudan	7.24	5.99	7.50	7.50	0.72	0.51	0.67	0.67	5.25	3.06	5.00	5.00	0.00	0.00	1.95	63.67
Burkina Faso	1.96	1.90	1.90	1.90	1.03	0.93	1.00	1.00	2.01	1.77	1.90	1.90	0.00	0.00	0.13	7.22
Mali	1.64	1.50	1.50	1.50	0.97	1.02	1.00	1.00	1.58	1.53	1.50	1.50	0.00	0.00	-0.03	-1.83
Niger	3.79	3.70	3.70	3.70	0.55	0.46	0.51	0.51	2.10	1.70	1.90	1.90	0.00	0.00	0.20	11.76
Cameroon	0.74	0.74	0.74	0.74	1.62	1.62	1.62	1.62	1.20	1.20	1.20	1.20	0.00	0.00	0.00	0.00
Tanzania	1.00	1.00	1.00	1.00	1.00	1.00	1.00	1.00	1.00	1.00	1.00	1.00	0.00	0.00	0.00	0.00
Egypt	0.15	0.15	0.15	0.15	5.00	5.20	5.27	5.27	0.75	0.78	0.79	0.79	0.00	0.00	0.01	1.28
Uganda	0.25	0.25	0.25	0.25	0.90	0.90	0.90	0.90	0.23	0.23	0.23	0.23	0.00	0.00	0.00	0.00
Ghana	0.31	0.31	0.31	0.31	1.29	1.42	1.29	1.29	0.40	0.44	0.40	0.40	0.00	0.00	-0.04	-8.88
Mozambique	0.29	0.27	0.28	0.28	0.51	0.55	0.33	0.33	0.15	0.15	0.09	0.09	0.00	0.00	-0.06	-40.00
South Africa	0.03	0.04	0.04	0.04	2.76	2.25	3.25	3.25	0.09	0.09	0.13	0.13	0.00	0.00	0.04	44.44
<b>Mexico</b>	1.40	1.23	1.32	1.32	3.50	3.48	3.41	3.41	4.89	4.28	4.50	4.50	0.00	0.00	0.22	5.14
<b>South America</b>																
Argentina	0.50	0.60	0.70	0.70	3.22	4.17	4.29	4.29	1.61	2.50	3.00	3.00	0.00	0.00	0.50	20.00
Brazil	1.42	1.56	1.60	1.60	3.38	3.14	3.13	3.13	4.79	4.91	5.00	5.00	0.00	0.00	0.09	1.85
<b>South Asia</b>																
India	3.54	4.10	3.80	3.80	1.08	1.07	1.11	1.11	3.81	4.40	4.20	4.20	0.00	0.00	-0.20	-4.55
Pakistan	0.22	0.22	0.22	0.22	0.63	0.63	0.63	0.63	0.14	0.14	0.14	0.14	0.00	0.00	0.00	0.00
<b>China</b>	0.68	0.63	0.63	0.63	4.58	4.76	4.76	4.76	3.09	3.00	3.00	3.00	0.00	0.00	0.00	0.00
<b>Australia</b>	0.69	0.60	0.60	0.60	3.84	3.67	3.67	3.67	2.64	2.20	2.20	2.20	0.00	0.00	0.00	0.00
<b>European Union</b>	0.13	0.16	0.16	0.16	4.10	5.23	5.10	5.10	0.51	0.81	0.79	0.79	0.00	0.00	-0.02	-2.47
<b>Others</b>	5.59	5.58	5.43	5.43	1.01	1.02	1.02	1.02	5.64	5.71	5.53	5.52	-0.01	-0.09	-0.19	-3.31

World and Selected Countries and Regions

**Table 09 Rice Area, Yield, and Production**  
**World and Selected Countries and Regions**

Country / Region	Area (Million hectares)				Yield (Metric tons per hectare)				Production (Million metric tons)				Change in Production			
	Prel.		2024/25 Proj.		Prel.		2024/25 Proj.		Prel.		2024/25 Proj.		From last month		From last year	
	2022/23	2023/24	Jun	Jul	2022/23	2023/24	Jun	Jul	2022/23	2023/24	Jun	Jul	MMT	Percent	MMT	Percent
<b>World</b>	165.47	165.69	167.56	167.57	4.66	4.70	4.70	4.71	515.83	520.87	527.63	528.17	0.55	0.10	7.30	1.40
<b>United States</b>	0.88	1.16	1.17	1.17	8.28	8.57	8.56	8.57	5.08	6.93	6.99	7.04	0.05	0.67	0.11	1.56
<b>Total Foreign</b>	164.59	164.53	166.39	166.39	4.64	4.67	4.68	4.68	510.75	513.94	520.63	521.13	0.50	0.10	7.19	1.40
<b>East Asia</b>																
China	29.45	28.95	29.00	29.00	7.08	7.14	7.19	7.19	145.95	144.62	146.00	146.00	0.00	0.00	1.38	0.95
Japan	1.50	1.46	1.44	1.44	6.86	6.84	6.87	6.87	7.48	7.27	7.20	7.20	0.00	0.00	-0.07	-0.99
Korea, South	0.73	0.71	0.69	0.69	6.87	6.92	6.86	6.86	3.76	3.70	3.60	3.60	0.00	0.00	-0.11	-2.89
Korea, North	0.54	0.54	0.54	0.54	3.87	4.18	4.18	4.18	1.36	1.47	1.47	1.47	0.00	0.00	0.00	0.00
<b>South Asia</b>																
India	47.83	47.60	48.50	48.50	4.26	4.32	4.27	4.27	135.76	137.00	138.00	138.00	0.00	0.00	1.00	0.73
Bangladesh	11.60	11.75	11.90	11.90	4.70	4.72	4.79	4.79	36.35	37.00	38.00	38.00	0.00	0.00	1.00	2.70
Pakistan	2.98	3.64	3.80	3.80	3.69	4.07	3.75	3.95	7.32	9.87	9.50	10.00	0.50	5.26	0.13	1.33
Nepal	1.45	1.45	1.45	1.45	3.79	3.66	3.72	3.72	3.65	3.53	3.60	3.60	0.00	0.00	0.07	1.98
Sri Lanka	1.15	1.16	1.15	1.15	3.63	4.22	4.48	4.48	2.84	3.33	3.50	3.50	0.00	0.00	0.17	5.04
<b>Southeast Asia</b>																
Indonesia	11.30	11.00	11.20	11.20	4.72	4.73	4.78	4.78	33.90	33.02	34.00	34.00	0.00	0.00	0.98	2.97
Vietnam	7.10	7.15	7.15	7.15	6.07	6.05	6.04	6.04	26.94	27.00	27.00	27.00	0.00	0.00	0.00	0.00
Thailand	11.07	10.65	10.70	10.70	2.86	2.85	2.85	2.85	20.91	20.00	20.10	20.10	0.00	0.00	0.10	0.50
Burma	6.80	6.86	6.80	6.80	2.71	2.72	2.78	2.78	11.80	11.95	12.10	12.10	0.00	0.00	0.15	1.26
Philippines	4.85	4.80	4.85	4.85	4.13	4.13	4.16	4.16	12.63	12.50	12.70	12.70	0.00	0.00	0.20	1.60
Cambodia	3.47	3.58	3.64	3.64	3.29	3.29	3.32	3.32	6.96	7.17	7.38	7.38	0.00	0.00	0.20	2.83
Laos	0.96	0.95	0.97	0.97	3.23	3.21	3.22	3.22	1.95	1.92	1.97	1.97	0.00	0.00	0.05	2.60
Malaysia	0.66	0.66	0.66	0.66	3.99	3.96	4.08	4.08	1.70	1.70	1.75	1.75	0.00	0.00	0.05	2.94
<b>South America</b>																
Brazil	1.48	1.50	1.60	1.60	6.78	6.86	6.89	6.89	6.82	7.00	7.50	7.50	0.00	0.00	0.50	7.14
Peru	0.42	0.43	0.43	0.43	8.34	8.52	8.60	8.60	2.40	2.50	2.55	2.55	0.00	0.00	0.05	2.00
<b>Africa</b>																
Egypt	0.60	0.63	0.60	0.60	8.70	8.70	8.70	8.70	3.60	3.78	3.60	3.60	0.00	0.00	-0.18	-4.76
Madagascar	1.60	1.60	1.60	1.60	2.87	2.75	2.75	2.75	2.93	2.82	2.82	2.82	0.00	0.00	0.00	0.00
Nigeria	3.50	3.50	3.50	3.50	2.43	2.43	2.49	2.49	5.36	5.36	5.48	5.48	0.00	0.00	0.13	2.35
<b>European Union</b>	0.33	0.36	0.40	0.40	6.11	6.05	6.78	6.78	1.29	1.38	1.72	1.72	0.00	0.00	0.34	24.35
<b>Iran</b>	0.57	0.57	0.57	0.57	5.32	5.30	5.32	5.32	2.00	2.00	2.00	2.00	0.00	0.00	0.01	0.25
<b>Others</b>	12.67	13.05	13.25	13.25	3.00	3.03	3.10	3.10	25.10	26.06	27.11	27.11	0.00	0.00	1.05	4.03

Yield is on a rough basis, before the milling process. Production is on a milled basis, after the milling process.



**Table 10 Total Oilseed Area, Yield, and Production**

**World and Selected Countries and Regions**

Country / Region	Area (Million hectares)				Yield (Metric tons per hectare)				Production (Million metric tons)				Change in Production			
	2022/23	Prel.	2024/25 Proj.		2022/23	Prel.	2024/25 Proj.		2022/23	Prel.	2024/25 Proj.		From last month		From last year	
		2023/24	Jun	Jul		2023/24	Jun	Jul		2023/24	Jun	Jul	MMT	Percent	MMT	Percent
<b>World Total</b>	--	--	--	--	--	--	--	--	637.79	657.21	685.81	686.09	0.28	0.04	28.89	4.40
<b>Total Foreign</b>	--	--	--	--	--	--	--	--	512.04	534.96	554.65	554.63	-0.02	0.00	19.67	3.68
<b>Oilseed, Copra</b>	--	--	--	--	--	--	--	--	6.00	6.21	5.81	5.81	0.00	0.00	-0.40	-6.50
<b>Oilseed, Palm Kernel</b>	--	--	--	--	--	--	--	--	20.06	20.72	20.72	20.73	0.01	0.05	0.02	0.08
<b>Major Oilseeds</b>	267.33	270.42	274.36	274.56	2.29	2.33	2.40	2.40	611.73	630.28	659.28	659.55	0.27	0.04	29.27	4.64
<b>United States</b>	39.91	38.03	40.28	40.52	3.15	3.21	3.26	3.24	125.75	122.24	131.16	131.46	0.30	0.23	9.22	7.54
<b>Foreign Oilseeds</b>	227.42	232.39	234.08	234.04	2.14	2.19	2.26	2.26	485.97	508.03	528.12	528.09	-0.03	-0.01	20.06	3.95
<b>South America</b>	71.21	74.31	76.58	76.58	3.01	3.13	3.28	3.28	214.57	232.74	251.01	251.01	0.00	0.00	18.27	7.85
Brazil	46.46	47.77	49.56	49.56	3.59	3.32	3.54	3.54	166.77	158.66	175.53	175.53	0.00	0.00	16.87	10.63
Argentina	17.76	19.48	19.70	19.70	1.77	2.85	2.88	2.88	31.45	55.57	56.76	56.76	0.00	0.00	1.19	2.14
Paraguay	3.74	3.71	3.87	3.87	2.75	2.89	2.83	2.83	10.27	10.72	10.94	10.94	0.00	0.00	0.23	2.12
Bolivia	1.83	1.84	1.86	1.86	2.42	2.16	2.17	2.17	4.43	3.98	4.04	4.04	0.00	0.00	0.06	1.51
Uruguay	1.28	1.37	1.46	1.46	1.00	2.52	2.31	2.31	1.28	3.45	3.37	3.37	0.00	0.00	-0.08	-2.21
<b>China</b>	25.95	26.84	26.15	26.20	2.62	2.58	2.58	2.59	67.92	69.14	67.48	67.83	0.35	0.51	-1.31	-1.90
<b>South Asia</b>	43.63	44.21	44.36	44.06	1.04	1.03	1.07	1.07	45.22	45.63	47.34	47.12	-0.22	-0.46	1.49	3.27
India	40.19	40.30	40.18	40.18	1.03	1.01	1.05	1.05	41.29	40.71	42.13	42.13	0.00	0.00	1.42	3.48
Pakistan	2.51	2.99	2.91	2.61	1.06	1.23	1.20	1.25	2.67	3.68	3.49	3.27	-0.22	-6.22	-0.41	-11.19
<b>European Union</b>	12.32	12.31	12.17	12.17	2.61	2.71	2.72	2.74	32.13	33.32	33.14	33.29	0.15	0.45	-0.03	-0.09
<b>United Kingdom</b>	0.37	0.39	0.28	0.28	3.73	3.11	3.13	3.13	1.36	1.22	0.88	0.88	0.00	0.00	-0.34	-28.04
<b>Former Soviet Union - 12</b>	27.85	28.75	29.64	29.64	1.87	2.03	1.96	1.93	52.07	58.30	57.97	57.07	-0.90	-1.55	-1.23	-2.11
Russia	14.74	14.85	15.50	15.50	1.80	1.89	1.81	1.77	26.55	28.10	28.10	27.40	-0.70	-2.49	-0.70	-2.49
Ukraine	8.75	9.60	9.75	9.75	2.26	2.55	2.45	2.43	19.80	24.45	23.90	23.70	-0.20	-0.84	-0.75	-3.07
Uzbekistan	1.07	1.05	1.02	1.02	1.24	1.15	1.18	1.18	1.33	1.21	1.21	1.21	0.00	0.00	0.00	0.00
<b>Canada</b>	10.75	11.16	10.93	11.12	2.36	2.32	2.41	2.42	25.32	25.87	26.37	26.95	0.58	2.19	1.08	4.16
<b>Africa</b>	24.35	24.34	24.13	24.15	1.05	0.98	1.06	1.06	25.60	23.75	25.65	25.66	0.02	0.06	1.91	8.05
Nigeria	4.87	4.87	5.07	5.07	1.15	1.15	1.13	1.13	5.61	5.60	5.75	5.75	0.00	0.00	0.15	2.68
South Africa	1.88	1.87	1.94	1.94	2.02	1.49	2.00	2.00	3.80	2.77	3.87	3.87	0.00	0.00	1.10	39.65
Tanzania	1.36	1.47	1.47	1.47	0.91	0.87	0.87	0.87	1.23	1.28	1.28	1.28	0.00	0.00	0.00	0.00
<b>Southeast Asia</b>	3.11	3.07	3.04	3.04	1.38	1.38	1.39	1.39	4.30	4.25	4.24	4.24	0.00	0.00	-0.02	-0.38
Burma	1.98	1.97	1.98	1.98	1.22	1.24	1.26	1.26	2.40	2.44	2.50	2.50	0.00	0.00	0.06	2.25
Indonesia	0.87	0.84	0.81	0.81	1.52	1.49	1.48	1.48	1.32	1.26	1.20	1.20	0.00	0.00	-0.06	-4.38
<b>Australia</b>	4.61	4.06	3.80	3.80	2.13	1.73	1.80	1.80	9.82	7.04	6.84	6.84	0.00	0.00	-0.20	-2.87
<b>Turkey</b>	1.47	1.27	1.30	1.30	2.71	2.43	2.68	2.68	3.98	3.09	3.49	3.49	0.00	0.00	0.40	13.00
<b>Others</b>	1.81	1.70	1.69	1.69	2.03	2.18	2.20	2.20	3.67	3.69	3.73	3.73	0.00	0.00	0.04	1.06

World Total and Total Foreign: (Major Oilseeds plus copra and palm kernel) Major Oilseeds: (soybeans, sunflowerseeds, peanuts(inshell), cottonseed and rapeseed)

**Table 11 Soybean Area, Yield, and Production**

Country / Region	Area (Million hectares)				Yield (Metric tons per hectare)				Production (Million metric tons)				Change in Production			
	Prel.		2024/25 Proj.		Prel.		2024/25 Proj.		Prel.		2024/25 Proj.		From last month		From last year	
	2022/23	2023/24	Jun	Jul	2022/23	2023/24	Jun	Jul	2022/23	2023/24	Jun	Jul	MMT	Percent	MMT	Percent
<b>World</b>	136.90	139.52	143.39	143.35	2.76	2.83	2.94	2.94	378.37	395.41	422.26	421.85	-0.41	-0.10	26.44	6.69
<b>United States</b>	34.87	33.33	34.64	34.50	3.33	3.40	3.50	3.50	116.22	113.34	121.11	120.70	-0.41	-0.34	7.36	6.49
<b>Total Foreign</b>	102.03	106.19	108.75	108.85	2.57	2.66	2.77	2.77	262.15	282.07	301.15	301.15	0.00	0.00	19.09	6.77
<b>South America</b>																
Brazil	44.60	45.80	47.30	47.30	3.63	3.34	3.57	3.57	162.00	153.00	169.00	169.00	0.00	0.00	16.00	10.46
Argentina	14.40	16.50	16.90	16.90	1.74	3.00	3.02	3.02	25.00	49.50	51.00	51.00	0.00	0.00	1.50	3.03
Paraguay	3.60	3.56	3.70	3.70	2.79	2.95	2.89	2.89	10.05	10.50	10.70	10.70	0.00	0.00	0.20	1.90
Bolivia	1.60	1.60	1.61	1.61	2.57	2.28	2.30	2.30	4.11	3.65	3.70	3.70	0.00	0.00	0.05	1.37
Uruguay	0.93	1.22	1.30	1.30	0.75	2.62	2.38	2.38	0.70	3.20	3.10	3.10	0.00	0.00	-0.10	-3.13
<b>East Asia</b>																
China	10.24	10.47	10.50	10.50	1.98	1.99	1.97	1.97	20.28	20.84	20.70	20.70	0.00	0.00	-0.14	-0.67
Korea, South	0.06	0.07	0.07	0.07	2.03	2.07	2.06	2.06	0.13	0.14	0.14	0.14	0.00	0.00	0.00	0.71
Korea, North	0.16	0.16	0.16	0.16	1.15	1.15	1.15	1.15	0.18	0.18	0.18	0.18	0.00	0.00	0.00	0.00
Japan	0.15	0.16	0.16	0.16	1.60	1.59	1.64	1.64	0.24	0.25	0.26	0.26	0.00	0.00	0.01	4.86
<b>India</b>	13.08	13.20	12.80	12.80	0.95	0.90	0.95	0.95	12.41	11.88	12.20	12.20	0.00	0.00	0.33	2.74
<b>Canada</b>	2.12	2.26	2.20	2.30	3.09	3.09	3.05	3.00	6.54	6.98	6.70	6.90	0.20	2.99	-0.08	-1.16
<b>Former Soviet Union - 12</b>																
Russia	3.36	3.50	3.80	3.80	1.79	1.94	1.79	1.74	6.00	6.80	6.80	6.60	-0.20	-2.94	-0.20	-2.94
Ukraine	1.82	2.00	2.20	2.20	2.25	2.60	2.50	2.50	4.10	5.20	5.50	5.50	0.00	0.00	0.30	5.77
<b>European Union</b>	1.12	1.03	1.11	1.11	2.34	2.89	2.75	2.75	2.61	2.98	3.05	3.05	0.00	0.00	0.07	2.35
<b>Southeast Asia</b>																
Indonesia	0.33	0.32	0.31	0.31	1.18	1.17	1.16	1.16	0.39	0.38	0.36	0.36	0.00	0.00	-0.02	-4.00
Vietnam	0.03	0.03	0.03	0.03	1.60	1.61	1.62	1.62	0.05	0.05	0.04	0.04	0.00	0.00	0.00	-6.67
Thailand	0.03	0.03	0.03	0.03	1.63	1.63	1.63	1.63	0.05	0.05	0.05	0.05	0.00	0.00	0.00	0.00
Burma	0.13	0.12	0.12	0.12	1.04	1.04	1.04	1.04	0.13	0.13	0.12	0.12	0.00	0.00	-0.01	-4.00
<b>Serbia</b>	0.24	0.24	0.24	0.24	1.70	2.77	2.64	2.64	0.40	0.65	0.62	0.62	0.00	0.00	-0.03	-4.62
<b>Mexico</b>	0.12	0.09	0.10	0.10	1.52	2.06	1.55	1.55	0.18	0.19	0.16	0.16	0.00	0.00	-0.03	-16.22
<b>Africa</b>																
South Africa	1.15	1.15	1.20	1.20	2.41	1.55	2.33	2.33	2.77	1.78	2.80	2.80	0.00	0.00	1.02	57.30
Nigeria	1.20	1.15	1.35	1.35	0.98	1.00	0.96	0.96	1.18	1.15	1.30	1.30	0.00	0.00	0.15	13.04
Zambia	0.38	0.38	0.38	0.38	1.27	1.27	1.27	1.27	0.48	0.48	0.48	0.48	0.00	0.00	0.00	0.00
Uganda	0.17	0.17	0.17	0.17	1.18	1.18	1.18	1.18	0.20	0.20	0.20	0.20	0.00	0.00	0.00	0.00
<b>Middle East</b>																
Iran	0.08	0.07	0.07	0.07	2.27	2.36	2.43	2.43	0.17	0.17	0.17	0.17	0.00	0.00	0.01	3.03
Turkey	0.04	0.03	0.04	0.04	4.14	4.12	4.29	4.29	0.15	0.14	0.15	0.15	0.00	0.00	0.01	7.14
<b>Others</b>	0.92	0.90	0.93	0.93	1.81	1.82	1.81	1.81	1.66	1.63	1.68	1.68	0.00	0.00	0.05	2.88

World and Selected Countries and Regions

**Table 12 Cottonseed Area, Yield, and Production**

Country / Region	Area (Million hectares)				Yield (Metric tons per hectare)				Production (Million metric tons)				Change in Production			
	Prel.		2024/25 Proj.		Prel.		2024/25 Proj.		Prel.		2024/25 Proj.		From last month		From last year	
	2022/23	2023/24	Jun	Jul	2022/23	2023/24	Jun	Jul	2022/23	2023/24	Jun	Jul	MMT	Percent	MMT	Percent
<b>World</b>	31.25	30.75	31.82	31.75	1.36	1.35	1.36	1.37	42.42	41.56	43.21	43.47	0.26	0.61	1.91	4.60
<b>United States</b>	2.95	2.61	3.69	3.91	1.36	1.27	1.23	1.23	4.01	3.31	4.55	4.82	0.27	5.88	1.52	45.86
<b>Total Foreign</b>	28.30	28.14	28.13	27.84	1.36	1.36	1.37	1.39	38.41	38.25	38.65	38.65	-0.01	-0.02	0.39	1.03
<b>South Asia</b>																
India	12.93	12.70	12.40	12.40	0.86	0.88	0.86	0.86	11.17	11.12	10.61	10.61	0.00	0.00	-0.51	-4.58
Pakistan	1.80	2.40	2.40	2.10	0.94	1.21	1.17	1.24	1.69	2.90	2.82	2.60	-0.22	-7.71	-0.30	-10.44
<b>China</b>	3.15	2.90	2.85	2.85	3.82	3.72	3.71	3.78	12.03	10.78	10.58	10.78	0.20	1.85	0.00	0.00
<b>Former Soviet Union - 12</b>																
Uzbekistan	1.05	1.03	1.00	1.00	1.19	1.10	1.14	1.14	1.25	1.14	1.14	1.14	0.00	0.00	0.00	0.00
Turkmenistan	0.55	0.55	0.55	0.55	0.64	0.64	0.64	0.64	0.35	0.35	0.35	0.35	0.00	0.00	0.00	0.00
Tajikistan	0.17	0.19	0.18	0.18	1.11	1.16	1.15	1.15	0.19	0.22	0.21	0.21	0.00	0.00	-0.01	-6.33
Kazakhstan	0.13	0.12	0.12	0.12	1.05	1.00	0.94	0.94	0.13	0.12	0.11	0.11	0.00	0.00	0.00	-3.42
<b>South America</b>																
Brazil	1.60	1.66	1.94	1.94	2.43	2.91	2.86	2.86	3.89	4.84	5.54	5.54	0.00	0.00	0.71	14.62
Argentina	0.51	0.56	0.53	0.53	0.84	0.99	1.09	1.09	0.43	0.56	0.57	0.57	0.00	0.00	0.02	3.24
<b>Middle East</b>																
Turkey	0.56	0.44	0.49	0.49	2.88	2.38	2.69	2.69	1.60	1.05	1.31	1.31	0.00	0.00	0.26	24.98
Syria	0.03	0.03	0.03	0.03	2.23	2.23	2.23	2.23	0.07	0.07	0.07	0.07	0.00	0.00	0.00	0.00
Iran	0.12	0.10	0.10	0.10	1.52	1.18	1.35	1.35	0.18	0.12	0.14	0.14	0.00	0.00	0.02	14.41
<b>Australia</b>	0.65	0.51	0.55	0.55	2.24	2.48	2.28	2.28	1.45	1.25	1.25	1.25	0.00	0.00	0.00	0.00
<b>European Union</b>	0.31	0.25	0.26	0.26	1.70	1.33	1.70	1.70	0.53	0.34	0.44	0.44	0.00	0.00	0.10	29.29
<b>Africa</b>																
Burkina Faso	0.62	0.54	0.55	0.55	0.35	0.40	0.40	0.40	0.21	0.21	0.22	0.22	0.00	0.00	0.01	4.25
Mali	0.60	0.71	0.72	0.72	0.35	0.52	0.53	0.53	0.21	0.37	0.38	0.38	0.00	0.00	0.02	4.09
Cameroon	0.23	0.25	0.25	0.25	1.29	1.35	1.35	1.35	0.30	0.33	0.33	0.33	0.00	0.00	0.00	0.00
Cote d'Ivoire	0.41	0.40	0.40	0.40	0.29	0.50	0.57	0.57	0.12	0.20	0.23	0.23	0.00	0.00	0.03	14.07
Benin	0.57	0.51	0.51	0.51	0.64	0.68	0.68	0.68	0.36	0.35	0.35	0.35	0.00	0.00	0.00	0.00
Tanzania	0.36	0.47	0.47	0.47	0.37	0.38	0.38	0.38	0.13	0.18	0.18	0.18	0.00	0.00	0.00	0.00
Egypt	0.14	0.10	0.10	0.12	0.92	0.96	0.94	0.95	0.13	0.10	0.09	0.11	0.02	15.96	0.01	13.54
Nigeria	0.27	0.27	0.27	0.27	0.56	0.56	0.56	0.56	0.15	0.15	0.15	0.15	0.00	0.00	0.00	0.00
Uganda	0.10	0.10	0.10	0.10	1.49	1.49	1.49	1.49	0.15	0.15	0.15	0.15	0.00	0.00	0.00	0.00
Zimbabwe	0.24	0.24	0.24	0.24	0.34	0.34	0.34	0.34	0.08	0.08	0.08	0.08	0.00	0.00	0.00	0.00
Sudan	0.20	0.20	0.20	0.20	1.53	1.53	1.53	1.53	0.31	0.31	0.31	0.31	0.00	0.00	0.00	0.00
<b>Mexico</b>	0.20	0.13	0.11	0.11	2.70	1.98	2.48	2.48	0.54	0.26	0.27	0.27	0.00	0.00	0.01	5.00
<b>Burma</b>	0.19	0.18	0.19	0.19	1.26	1.24	1.24	1.24	0.23	0.23	0.24	0.24	0.00	0.00	0.01	4.42
<b>Others</b>	0.62	0.62	0.64	0.64	0.84	0.83	0.86	0.86	0.53	0.51	0.55	0.55	0.00	0.00	0.03	6.63

World and Selected Countries and Regions

**Table 13 Peanut Area, Yield, and Production**

Country / Region	Area (Million hectares)				Yield (Metric tons per hectare)				Production (Million metric tons)				Change in Production			
	Prel.		2024/25 Proj.		Prel.		2024/25 Proj.		Prel.		2024/25 Proj.		From last month		From last year	
	2022/23	2023/24	Jun	Jul	2022/23	2023/24	Jun	Jul	2022/23	2023/24	Jun	Jul	MMT	Percent	MMT	Percent
<b>World</b>	28.94	29.42	29.31	29.36	1.71	1.68	1.75	1.76	49.41	49.40	51.32	51.53	0.21	0.42	2.13	4.31
<b>United States</b>	0.56	0.64	0.64	0.69	4.50	4.19	4.49	4.48	2.51	2.67	2.88	3.09	0.21	7.41	0.42	15.61
<b>Total Foreign</b>	28.38	28.78	28.67	28.67	1.65	1.62	1.69	1.69	46.89	46.73	48.44	48.44	0.00	0.00	1.71	3.66
<b>China</b>	4.68	4.98	4.85	4.85	3.91	3.86	3.92	3.92	18.33	19.22	19.00	19.00	0.00	0.00	-0.22	-1.13
<b>Africa</b>																
Nigeria	3.40	3.45	3.45	3.45	1.26	1.25	1.25	1.25	4.28	4.30	4.30	4.30	0.00	0.00	0.00	0.00
Sudan	3.07	3.01	2.50	2.50	0.86	0.46	0.80	0.80	2.64	1.39	2.00	2.00	0.00	0.00	0.61	44.30
Senegal	1.23	1.25	1.25	1.25	1.23	1.38	1.36	1.36	1.50	1.73	1.70	1.70	0.00	0.00	-0.03	-1.62
Cameroon	0.43	0.43	0.43	0.43	1.40	1.40	1.40	1.40	0.60	0.60	0.60	0.60	0.00	0.00	0.00	0.00
Ghana	0.37	0.37	0.37	0.37	1.65	1.62	1.62	1.62	0.61	0.60	0.60	0.60	0.00	0.00	0.00	0.00
Chad	0.76	0.76	0.76	0.76	1.10	1.09	1.09	1.09	0.83	0.83	0.83	0.83	0.00	0.00	0.00	0.00
Malawi	0.40	0.40	0.40	0.40	0.88	0.88	0.88	0.88	0.35	0.35	0.35	0.35	0.00	0.00	0.00	0.00
Congo (Kinshasa)	0.53	0.53	0.53	0.53	0.91	0.91	0.91	0.91	0.48	0.48	0.48	0.48	0.00	0.00	0.00	0.00
Niger	0.97	0.92	0.92	0.92	0.69	0.65	0.65	0.65	0.67	0.60	0.60	0.60	0.00	0.00	0.00	0.00
Mali	0.43	0.43	0.43	0.43	1.04	1.00	1.00	1.00	0.44	0.43	0.43	0.43	0.00	0.00	0.00	0.00
Uganda	0.35	0.35	0.35	0.35	0.57	0.57	0.57	0.57	0.20	0.20	0.20	0.20	0.00	0.00	0.00	0.00
Burkina Faso	0.63	0.64	0.64	0.64	0.89	0.90	0.90	0.90	0.56	0.58	0.58	0.58	0.00	0.00	0.00	0.00
Guinea	0.90	0.90	0.90	0.90	1.14	1.11	1.11	1.11	1.03	1.00	1.00	1.00	0.00	0.00	0.00	0.00
Egypt	0.06	0.06	0.06	0.06	3.20	3.20	3.20	3.20	0.21	0.21	0.21	0.21	0.00	0.00	0.00	0.00
Central African Republic	0.13	0.13	0.13	0.13	1.15	1.15	1.15	1.15	0.15	0.15	0.15	0.15	0.00	0.00	0.00	0.00
South Africa	0.03	0.04	0.04	0.04	2.29	1.88	2.00	2.00	0.07	0.08	0.08	0.08	0.00	0.00	0.01	6.67
Mozambique	0.38	0.38	0.38	0.38	0.34	0.34	0.34	0.34	0.13	0.13	0.13	0.13	0.00	0.00	0.00	0.00
Cote d'Ivoire	0.17	0.17	0.17	0.17	1.47	1.45	1.45	1.45	0.24	0.24	0.24	0.24	0.00	0.00	0.00	0.00
Benin	0.17	0.18	0.18	0.18	0.96	0.97	0.97	0.97	0.16	0.18	0.18	0.18	0.00	0.00	0.00	0.00
<b>South Asia</b>																
India	4.96	5.00	5.50	5.50	1.27	1.20	1.29	1.29	6.30	6.00	7.10	7.10	0.00	0.00	1.10	18.33
Pakistan	0.13	0.13	0.13	0.13	0.88	0.88	0.88	0.88	0.12	0.12	0.12	0.12	0.00	0.00	0.00	0.00
<b>Southeast Asia</b>																
Indonesia	0.54	0.52	0.50	0.50	1.72	1.69	1.68	1.68	0.93	0.88	0.84	0.84	0.00	0.00	-0.04	-4.55
Burma	1.07	1.07	1.08	1.08	1.55	1.59	1.63	1.63	1.65	1.70	1.75	1.75	0.00	0.00	0.05	2.94
Vietnam	0.15	0.15	0.14	0.14	2.63	2.62	2.64	2.64	0.40	0.38	0.37	0.37	0.00	0.00	-0.01	-3.39
Thailand	0.02	0.02	0.02	0.02	1.67	1.67	1.67	1.67	0.04	0.04	0.04	0.04	0.00	0.00	0.00	0.00
<b>South America</b>																
Argentina	0.37	0.40	0.40	0.40	2.59	3.48	3.38	3.38	0.96	1.38	1.35	1.35	0.00	0.00	-0.03	-1.82
Brazil	0.20	0.26	0.26	0.26	3.95	2.90	3.46	3.46	0.79	0.74	0.90	0.90	0.00	0.00	0.16	21.62
<b>Mexico</b>	0.05	0.05	0.05	0.05	1.76	1.74	1.70	1.70	0.09	0.08	0.09	0.09	0.00	0.00	0.01	6.25
<b>Others</b>	1.80	1.81	1.85	1.85	1.18	1.19	1.21	1.21	2.13	2.15	2.25	2.25	0.00	0.00	0.10	4.70



**Table 14 Sunflowerseed Area, Yield, and Production**

Country / Region	Area (Million hectares)				Yield (Metric tons per hectare)				Production (Million metric tons)				Change in Production						
	2022/23	Prel.		2024/25 Proj.		2022/23	Prel.		2024/25 Proj.		2022/23	Prel.		2024/25 Proj.		From last month		From last year	
		2023/24	Jun	Jul	2023/24		Jun	Jul	2023/24	Jun		Jul	MMT	Percent	MMT	Percent			
<b>World</b>	28.30	27.70	27.87	27.89	1.87	1.99	1.99	1.97	52.78	55.14	55.43	54.82	-0.61	-1.10	-0.33	-0.59			
<b>United States</b>	0.65	0.51	0.37	0.35	1.97	2.00	1.99	1.99	1.27	1.03	0.74	0.70	-0.04	-5.43	-0.33	-32.23			
<b>Total Foreign</b>	27.65	27.19	27.50	27.54	1.86	1.99	1.99	1.97	51.51	54.12	54.69	54.12	-0.57	-1.05	0.00	0.01			
<b>Former Soviet Union - 12</b>																			
Russia	9.11	9.30	9.50	9.50	1.78	1.84	1.79	1.74	16.25	17.10	17.00	16.50	-0.50	-2.94	-0.60	-3.51			
Ukraine	5.70	6.00	6.20	6.20	2.14	2.42	2.37	2.34	12.20	14.50	14.70	14.50	-0.20	-1.36	0.00	0.00			
Kazakhstan	1.09	1.13	1.15	1.15	1.20	1.10	1.13	1.13	1.30	1.24	1.30	1.30	0.00	0.00	0.06	5.18			
<b>European Union</b>	4.97	4.80	4.95	4.95	1.89	2.08	2.20	2.20	9.39	10.00	10.90	10.90	0.00	0.00	0.90	9.00			
<b>South America</b>																			
Argentina	2.45	2.00	1.85	1.85	2.05	2.05	2.05	2.05	5.02	4.10	3.80	3.80	0.00	0.00	-0.30	-7.32			
Uruguay	0.01	0.01	0.01	0.01	0.91	0.92	1.00	1.00	0.01	0.01	0.01	0.01	0.00	0.00	0.00	-9.09			
Bolivia	0.23	0.24	0.25	0.25	1.39	1.38	1.36	1.36	0.32	0.33	0.34	0.34	0.00	0.00	0.01	3.03			
Brazil	0.06	0.06	0.06	0.06	1.52	1.52	1.50	1.50	0.09	0.09	0.09	0.09	0.00	0.00	0.01	5.88			
Paraguay	0.03	0.02	0.03	0.03	1.64	1.63	1.60	1.60	0.04	0.04	0.04	0.04	0.00	0.00	0.00	2.56			
<b>China</b>	0.62	0.70	0.55	0.60	2.79	2.83	2.91	2.92	1.74	1.98	1.60	1.75	0.15	9.38	-0.23	-11.75			
<b>South Asia</b>																			
India	0.36	0.15	0.18	0.18	0.59	0.75	0.63	0.63	0.22	0.11	0.11	0.11	0.00	0.00	0.00	0.89			
Pakistan	0.07	0.08	0.08	0.08	1.72	1.35	1.31	1.31	0.12	0.11	0.11	0.11	0.00	0.00	0.00	-2.78			
<b>Middle East</b>																			
Turkey	0.79	0.70	0.69	0.69	2.41	2.21	2.43	2.43	1.90	1.55	1.68	1.68	0.00	0.00	0.13	8.06			
Iran	0.04	0.04	0.04	0.04	1.02	1.05	1.07	1.07	0.04	0.04	0.05	0.05	0.00	0.00	0.00	4.65			
Israel	0.00	0.00	0.00	0.00	2.00	4.00	4.00	4.00	0.00	0.00	0.00	0.00	0.00	0.00	0.00	0.00			
<b>Africa</b>																			
Egypt	0.01	0.01	0.01	0.01	2.75	2.63	2.75	2.75	0.02	0.02	0.02	0.02	0.00	0.00	0.00	4.76			
Morocco	0.03	0.02	0.02	0.02	1.11	1.27	1.17	1.17	0.03	0.03	0.03	0.03	0.00	0.00	0.00	0.00			
South Africa	0.56	0.53	0.54	0.54	1.29	1.23	1.30	1.30	0.72	0.65	0.70	0.70	0.00	0.00	0.05	7.69			
<b>Burma</b>	0.60	0.60	0.60	0.60	0.65	0.65	0.65	0.65	0.39	0.39	0.39	0.39	0.00	0.00	0.00	0.00			
<b>Canada</b>	0.04	0.04	0.03	0.02	2.21	2.30	2.18	2.17	0.08	0.09	0.07	0.05	-0.02	-30.56	-0.04	-45.65			
<b>Australia</b>	0.03	0.03	0.02	0.02	1.48	1.28	1.50	1.50	0.04	0.03	0.03	0.03	0.00	0.00	0.00	-6.25			
<b>Others</b>	0.86	0.73	0.73	0.73	1.83	2.33	2.36	2.36	1.58	1.70	1.73	1.73	0.00	0.00	0.03	1.53			

World and Selected Countries and Regions

**Table 15 Rapeseed Area, Yield, and Production**

Country / Region	Area (Million hectares)				Yield (Metric tons per hectare)				Production (Million metric tons)				Change in Production			
	Prel.		2024/25 Proj.		Prel.		2024/25 Proj.		Prel.		2024/25 Proj.		From last month		From last year	
	2022/23	2023/24	Jun	Jul	2022/23	2023/24	Jun	Jul	2022/23	2023/24	Jun	Jul	MMT	Percent	MMT	Percent
<b>World</b>	41.95	43.04	41.98	42.21	2.12	2.06	2.07	2.08	88.75	88.76	87.07	87.88	0.82	0.94	-0.88	-0.99
<b>United States</b>	0.88	0.94	0.93	1.07	1.98	2.01	2.02	2.02	1.74	1.90	1.89	2.15	0.27	14.16	0.26	13.56
<b>Total Foreign</b>	41.07	42.09	41.05	41.15	2.12	2.06	2.08	2.08	87.01	86.87	85.18	85.73	0.55	0.65	-1.14	-1.31
<b>European Union</b>	5.92	6.22	5.85	5.85	3.31	3.22	3.21	3.23	19.61	20.00	18.75	18.90	0.15	0.80	-1.10	-5.50
<b>United Kingdom</b>	0.37	0.39	0.28	0.28	3.73	3.11	3.13	3.13	1.36	1.22	0.88	0.88	0.00	0.00	-0.34	-28.04
<b>Switzerland</b>	0.03	0.03	0.03	0.03	3.68	3.52	3.52	3.52	0.09	0.09	0.09	0.09	0.00	0.00	0.00	0.00
<b>Canada</b>	8.60	8.86	8.70	8.80	2.17	2.12	2.25	2.27	18.70	18.80	19.60	20.00	0.40	2.04	1.20	6.38
<b>China</b>	7.25	7.79	7.40	7.40	2.14	2.10	2.11	2.11	15.53	16.32	15.60	15.60	0.00	0.00	-0.72	-4.42
<b>South Asia</b>																
India	8.85	9.25	9.30	9.30	1.27	1.25	1.30	1.30	11.20	11.60	12.10	12.10	0.00	0.00	0.50	4.31
Pakistan	0.51	0.38	0.30	0.30	1.46	1.46	1.50	1.50	0.74	0.56	0.45	0.45	0.00	0.00	-0.11	-19.21
Bangladesh	0.81	0.80	1.10	1.10	1.30	1.29	1.30	1.30	1.05	1.03	1.43	1.43	0.00	0.00	0.40	38.83
<b>Former Soviet Union - 12</b>																
Russia	2.27	2.05	2.20	2.20	1.89	2.05	1.95	1.95	4.30	4.20	4.30	4.30	0.00	0.00	0.10	2.38
Ukraine	1.23	1.60	1.35	1.35	2.85	2.97	2.74	2.74	3.50	4.75	3.70	3.70	0.00	0.00	-1.05	-22.11
Belarus	0.36	0.40	0.48	0.48	2.22	2.25	2.14	2.14	0.80	0.90	1.03	1.03	0.00	0.00	0.13	13.89
Kazakhstan	0.13	0.09	0.10	0.10	1.48	1.32	1.35	1.35	0.19	0.12	0.14	0.14	0.00	0.00	0.01	9.76
<b>Australia</b>	3.90	3.50	3.20	3.20	2.12	1.63	1.72	1.72	8.27	5.70	5.50	5.50	0.00	0.00	-0.20	-3.51
<b>South America</b>																
Chile	0.03	0.04	0.04	0.04	3.79	3.82	3.86	3.86	0.13	0.15	0.14	0.14	0.00	0.00	-0.01	-6.90
Paraguay	0.07	0.07	0.08	0.08	1.77	1.50	1.53	1.53	0.12	0.11	0.12	0.12	0.00	0.00	0.01	9.52
<b>Ethiopia</b>	0.03	0.03	0.03	0.03	1.80	1.80	1.80	1.80	0.05	0.05	0.05	0.05	0.00	0.00	0.00	0.00
<b>Others</b>	0.72	0.61	0.63	0.63	1.91	2.13	2.12	2.12	1.38	1.29	1.33	1.33	0.00	0.00	0.04	3.34

World and Selected Countries and Regions

**Table 16 Copra, Palm Kernel, and Palm Oil Production**

Country / Region	Production (Million metric tons)				Change in Production			
	2022/23	Prel.	2024/25 Proj.		From last month		From last year	
		2023/24	Jun	Jul	MMT	Percent	MMT	Percent
<b>Oilseed, Copra</b>								
Philippines	2.60	2.90	2.50	2.50	0.00	0.00	-0.40	-13.79
Indonesia	1.68	1.69	1.68	1.68	0.00	0.00	-0.01	-0.59
India	0.94	0.94	0.94	0.94	0.00	0.00	0.00	0.00
Vietnam	0.29	0.29	0.29	0.29	0.00	0.00	0.00	0.00
Papua New Guinea	0.10	0.09	0.10	0.10	0.00	0.00	0.01	11.11
Sri Lanka	0.07	0.07	0.07	0.07	0.00	0.00	0.00	0.00
Thailand	0.07	0.07	0.07	0.07	0.00	0.00	0.00	0.00
Mexico	0.05	0.05	0.05	0.05	0.00	0.00	0.00	0.00
Cote d'Ivoire	0.03	0.03	0.03	0.03	0.00	0.00	0.00	0.00
Malaysia	0.03	0.03	0.03	0.03	0.00	0.00	0.00	0.00
World	6.00	6.21	5.81	5.81	0.00	0.00	-0.40	-6.44
<b>Oilseed, Palm Kernel</b>								
Indonesia	12.00	12.20	12.20	12.20	0.00	0.00	0.00	0.00
Malaysia	4.49	4.72	4.70	4.71	0.01	0.21	-0.01	-0.21
Nigeria	0.90	1.10	1.10	1.10	0.00	0.00	0.00	0.00
Thailand	0.86	0.86	0.87	0.87	0.00	0.00	0.01	1.16
Colombia	0.33	0.35	0.35	0.35	0.00	0.00	0.00	0.00
Guatemala	0.18	0.18	0.19	0.19	0.00	0.00	0.00	0.00
Papua New Guinea	0.17	0.18	0.18	0.18	0.00	0.00	0.00	0.00
Brazil	0.15	0.16	0.16	0.16	0.00	0.00	0.00	0.00
Honduras	0.16	0.16	0.16	0.16	0.00	0.00	0.00	0.00
Cameroon	0.15	0.15	0.15	0.15	0.00	0.00	0.00	0.00
World	20.06	20.72	20.72	20.73	0.01	0.05	0.01	0.05
<b>Oil, Palm</b>								
Indonesia	46.50	47.00	47.50	47.50	0.00	0.00	0.50	1.06
Malaysia	18.39	19.25	19.00	19.20	0.20	1.05	-0.05	-0.26
Thailand	3.33	3.28	3.36	3.36	0.00	0.00	0.08	2.44
Colombia	1.80	1.90	1.95	1.95	0.00	0.00	0.05	2.63
Nigeria	1.40	1.50	1.50	1.50	0.00	0.00	0.00	0.00
Guatemala	0.91	0.92	0.95	0.95	0.00	0.00	0.02	2.17
Papua New Guinea	0.80	0.82	0.83	0.83	0.00	0.00	0.01	1.22
Cote d'Ivoire	0.60	0.60	0.60	0.60	0.00	0.00	0.00	0.00
Honduras	0.60	0.60	0.60	0.60	0.00	0.00	0.00	0.00
Brazil	0.57	0.59	0.60	0.60	0.00	0.00	0.02	3.45
World	77.96	79.53	79.99	80.19	0.20	0.25	0.66	0.83

World and Selected Countries and Regions

**Table 17 Cotton Area, Yield, and Production**

Country / Region	Area (Million hectares)				Yield (Kilograms per hectare)				Production (Million 480 lb. bales)				Change in Production			
	Prel.		2024/25 Proj.		Prel.		2024/25 Proj.		Prel.		2024/25 Proj.		From last month		From last year	
	2022/23	2023/24	Jun	Jul	2022/23	2023/24	Jun	Jul	2022/23	2023/24	Jun	Jul	MBales	Percent	MBales	Percent
<b>World</b>	31.76	31.44	32.47	32.41	798	787	799	808	116.41	113.70	119.14	120.19	1.05	0.88	6.49	5.71
<b>United States</b>	2.95	2.61	3.69	3.91	1,068	1,008	943	946	14.47	12.07	16.00	17.00	1.00	6.25	4.93	40.89
<b>Total Foreign</b>	28.81	28.84	28.78	28.49	770	767	780	788	101.95	101.63	103.14	103.19	0.05	0.05	1.55	1.53
<b>South Asia</b>																
India	12.93	12.70	12.40	12.40	443	449	439	439	26.30	26.20	25.00	25.00	0.00	0.00	-1.20	-4.58
Pakistan	1.80	2.40	2.40	2.10	472	608	590	622	3.90	6.70	6.50	6.00	-0.50	-7.69	-0.70	-10.45
<b>China</b>	3.15	2.90	2.85	2.85	2,122	2,065	2,063	2,101	30.70	27.50	27.00	27.50	0.50	1.85	0.00	0.00
<b>South America</b>																
Brazil	1.60	1.66	1.94	1.94	1,595	1,911	1,874	1,874	11.72	14.57	16.70	16.70	0.00	0.00	2.13	14.62
Argentina	0.51	0.56	0.53	0.53	495	583	643	643	1.17	1.50	1.55	1.55	0.00	0.00	0.05	3.33
Paraguay	0.05	0.06	0.07	0.07	890	812	837	837	0.18	0.21	0.25	0.25	0.00	0.00	0.05	21.95
<b>Africa</b>																
Burkina Faso	0.62	0.54	0.55	0.55	273	313	317	317	0.78	0.77	0.80	0.80	0.00	0.00	0.03	3.90
Mali	0.60	0.71	0.72	0.72	269	399	408	408	0.74	1.30	1.35	1.35	0.00	0.00	0.05	3.85
Cote d'Ivoire	0.41	0.40	0.40	0.40	236	411	463	463	0.45	0.75	0.85	0.85	0.00	0.00	0.11	14.09
Benin	0.57	0.51	0.51	0.51	418	446	446	446	1.10	1.05	1.05	1.05	0.00	0.00	0.00	0.00
Egypt	0.14	0.10	0.10	0.12	661	686	675	682	0.43	0.32	0.31	0.36	0.05	16.13	0.05	14.29
Cameroon	0.23	0.25	0.25	0.25	563	587	587	587	0.60	0.66	0.66	0.66	0.00	0.00	0.00	0.00
Tanzania	0.36	0.47	0.47	0.47	184	220	220	220	0.31	0.47	0.47	0.47	0.00	0.00	0.00	0.00
Nigeria	0.27	0.27	0.27	0.27	282	282	282	282	0.35	0.35	0.35	0.35	0.00	0.00	0.00	0.00
Zimbabwe	0.24	0.24	0.24	0.24	195	195	195	195	0.22	0.22	0.22	0.22	0.00	0.00	0.00	0.00
Ethiopia	0.05	0.06	0.06	0.06	726	713	713	713	0.18	0.18	0.18	0.18	0.00	0.00	0.00	0.00
<b>Former Soviet Union - 12</b>																
Uzbekistan	1.05	1.03	1.00	1.00	664	613	631	631	3.20	2.90	2.90	2.90	0.00	0.00	0.00	0.00
Turkmenistan	0.55	0.55	0.55	0.55	356	356	356	356	0.90	0.90	0.90	0.90	0.00	0.00	0.00	0.00
Tajikistan	0.17	0.19	0.18	0.18	615	647	641	641	0.48	0.57	0.53	0.53	0.00	0.00	-0.04	-6.19
Kazakhstan	0.13	0.12	0.12	0.12	584	558	526	526	0.34	0.30	0.29	0.29	0.00	0.00	-0.01	-3.33
<b>Middle East</b>																
Turkey	0.56	0.44	0.49	0.49	1,922	1,583	1,796	1,796	4.90	3.20	4.00	4.00	0.00	0.00	0.80	25.00
Syria	0.03	0.03	0.03	0.03	1,161	1,161	1,161	1,161	0.16	0.16	0.16	0.16	0.00	0.00	0.00	0.00
Iran	0.12	0.10	0.10	0.10	977	762	871	871	0.53	0.35	0.40	0.40	0.00	0.00	0.05	14.29
<b>Australia</b>	0.65	0.51	0.55	0.55	1,943	2,156	1,979	1,979	5.80	5.00	5.00	5.00	0.00	0.00	0.00	0.00
<b>Mexico</b>	0.20	0.13	0.11	0.11	1,720	1,491	1,583	1,583	1.58	0.90	0.80	0.80	0.00	0.00	-0.10	-10.81
<b>Burma</b>	0.19	0.18	0.19	0.19	664	654	654	654	0.56	0.55	0.57	0.57	0.00	0.00	0.02	4.39
<b>Others</b>	1.65	1.76	1.73	1.73	579	505	549	549	4.39	4.09	4.36	4.36	0.00	0.00	0.27	6.51

World and Selected Countries and Regions



**TABLE 18**

The table below presents a record of the July projection and the final Estimate. Using world wheat production as an example, the "root mean square error" means that chances are 2 out of 3 that the current forecast will not be above or below the final estimate by more than 2.7 percent. Chances are 9 out of 10 (90% confidence level) that the difference will not exceed 4.5 percent. The average difference between the July projection and the final estimate is 13.9 million tons, ranging from 1 million to 34.6 million tons. The July projection has been below the estimate 25 times and above 18 times.

**RELIABILITY OF PRODUCTION PROJECTIONS 1/**

COMMODITY AND REGION	Root mean square error	90 percent confidence interval	Difference between forecast and final estimate				
			Average	Smallest	Largest	Years	
						Below final	Above final
	Percent		---Million metric tons---				
<b>WHEAT</b>							
World	2.7	4.5	13.9	1.0	34.6	25	18
U.S.	3.7	6.2	1.6	0.0	6.2	20	23
Foreign	2.9	5.0	13.7	0.3	34.7	26	17
<b>COARSE GRAINS 2/</b>							
World	2.8	4.7	22.5	1.3	68.4	22	21
U.S.	9.6	16.2	15.1	0.0	57.9	19	24
Foreign	2.5	4.2	14.2	1.1	53.0	22	21
<b>RICE (Milled)</b>							
World	2.3	3.8	6.6	0.4	24.0	26	17
U.S.	5.5	9.3	0.3	0.0	0.8	21	20
Foreign	2.3	3.9	6.6	0.5	24.3	26	17
<b>SOYBEANS</b>							
World	5.1	8.6	8.4	0.5	33.2	19	24
U.S.	6.8	11.5	3.7	0.0	11.7	22	21
Foreign	7.5	12.6	7.3	1.0	34.1	21	22
<b>COTTON</b>			---Million 480-lb. bales---				
World	5.5	9.2	3.8	0.0	14.9	23	20
U.S.	11.4	19.1	1.4	0.1	5.3	21	22
Foreign	5.6	9.4	2.9	0.0	12.1	22	20
<b>UNITED STATES</b>			-----Million bushels-----				
<i>CORN</i>	10.5	17.7	545	12	2,190	23	20
<i>SORGHUM</i>	23.2	39.1	70	3	213	24	19
<i>BARLEY</i>	7.4	12.5	19	0	87	15	27
<i>OATS</i>	12.4	20.9	18	0	144	8	33

1/ Marketing years 1981/82 through 2023/24 for grains, soybeans (U.S only), and cotton. Final for grains, soybeans, and cotton is defined as the first November estimate following the marketing year for 1981/82 through 2022/23, and for 2023/24 the last month's estimate.

2/ Includes corn, sorghum, barley, oats, rye, millet, and mixed grain.

July 2024

Global Market Analysis, FAS, USDA