



United States
Department of
Agriculture

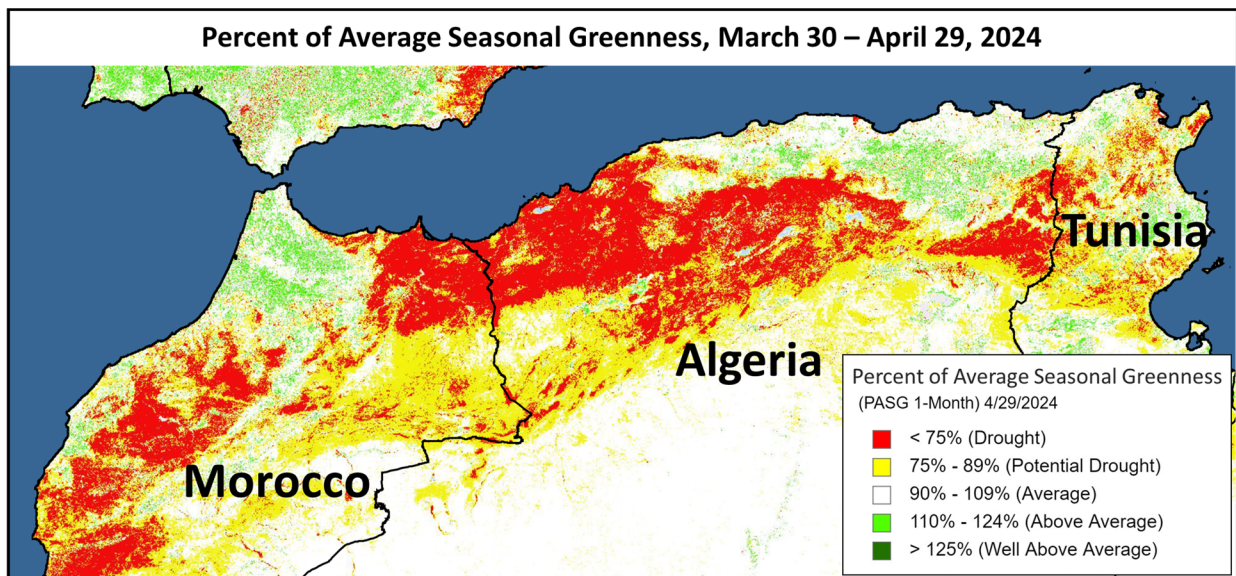
Foreign
Agricultural
Service

Circular Series
WAP 5-24
May 2024

World Agricultural Production

Northwest Africa Wheat: Varying Weather Conditions; Mixed Results for MY 2024/25

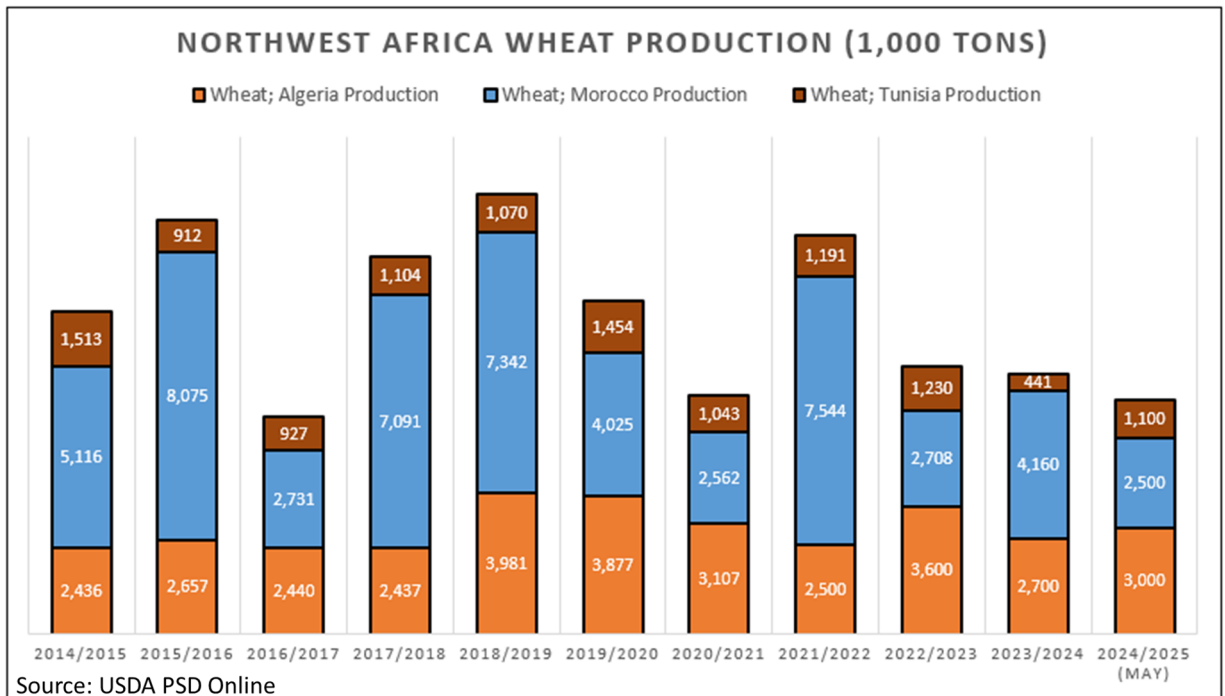
In Northwest Africa (the countries of Morocco, Algeria, Tunisia), the wheat forecast for marketing year (MY) 2024/25 is expected to have mixed results. The poorest conditions can be found in the large southern and central growing regions of Morocco, as well as in northeastern Morocco and adjacent areas of western Algeria. Conditions are better farther east in central and eastern Algeria, due to increased rainfall, particularly falling later in the season. Tunisia is expected to have the best conditions of the Maghreb, having received favorable rainfall throughout most of the growing season.



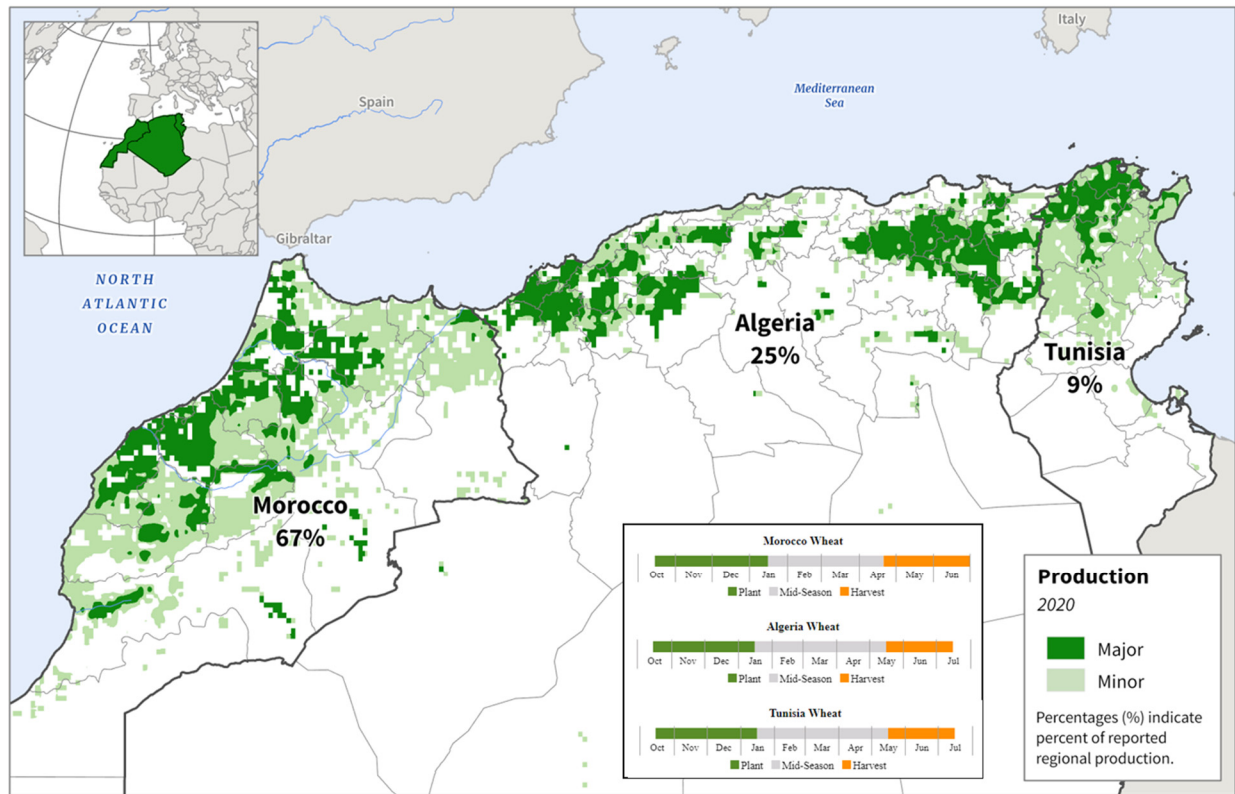
Source: USDA/NASA, Percent of Average Seasonal Greenness (PASG) derived from MODIS NDVI

Overall, Northwest Africa's growing season started much later than usual in the fall of 2023 because rainfall was late arriving and limited in quantity, thereby delaying and reducing planted acreage. Harvest begins in southern Morocco in May, progressing north and east into Algeria and Tunisia. Harvest wraps up in Northwest Africa in the eastern highlands around the end of June.

Approved by the World Agricultural Outlook Board



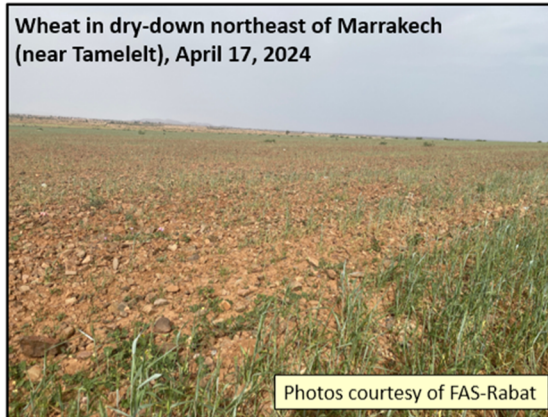
Northwest Africa: Wheat Production



Sources: Ministère de l'agriculture et du Développement Rural, Algeria (2017-2019); Moroccan Ministry of Agriculture, Rural Development and Maritime Fisheries (2017-2019); Tunisian Republic, Ministry of Agriculture, Water Resources, and Fisheries (2018-2020); International Food Policy Research Institute (IFPRI) Spatial Production Allocation Model (SPAM) 2020, Wheat

Morocco is typically the largest cereals producer of the three countries, but this year it is second to Algeria's production. Morocco is forecast to produce just 2.5 million metric tons (mmt) of wheat compared to 4.2 mmt last year. Harvested area is estimated at 2.2 million hectares (mha), compared to 2.5 mha last year and a 2.6 mha 5-year average. Rains during planting were especially limited and late in Morocco, resulting in reduced plantings until January 2024. Yield is forecast at 1.14 tons per hectare (t/ha) compared to 1.66 t/ha last year and a 1.58 t/ha 5-year average. The vast majority of wheat in Morocco is grown without irrigation. A severe lack of precipitation across the vast central and southern growing regions has diminished crop prospects since planting. As the season progressed, rainfall remained far below average while temperatures were above average, worsening soil moisture availability. A smaller growing region in the north around Tangiers received higher precipitation totals, preventing a more significant national-level yield drop. Field data from farm visits were collected by FAS/Rabat during April 2024 crop travel which confirmed the severe drought stress; some of these damaged fields would likely not be harvested, left for livestock to graze as forage.

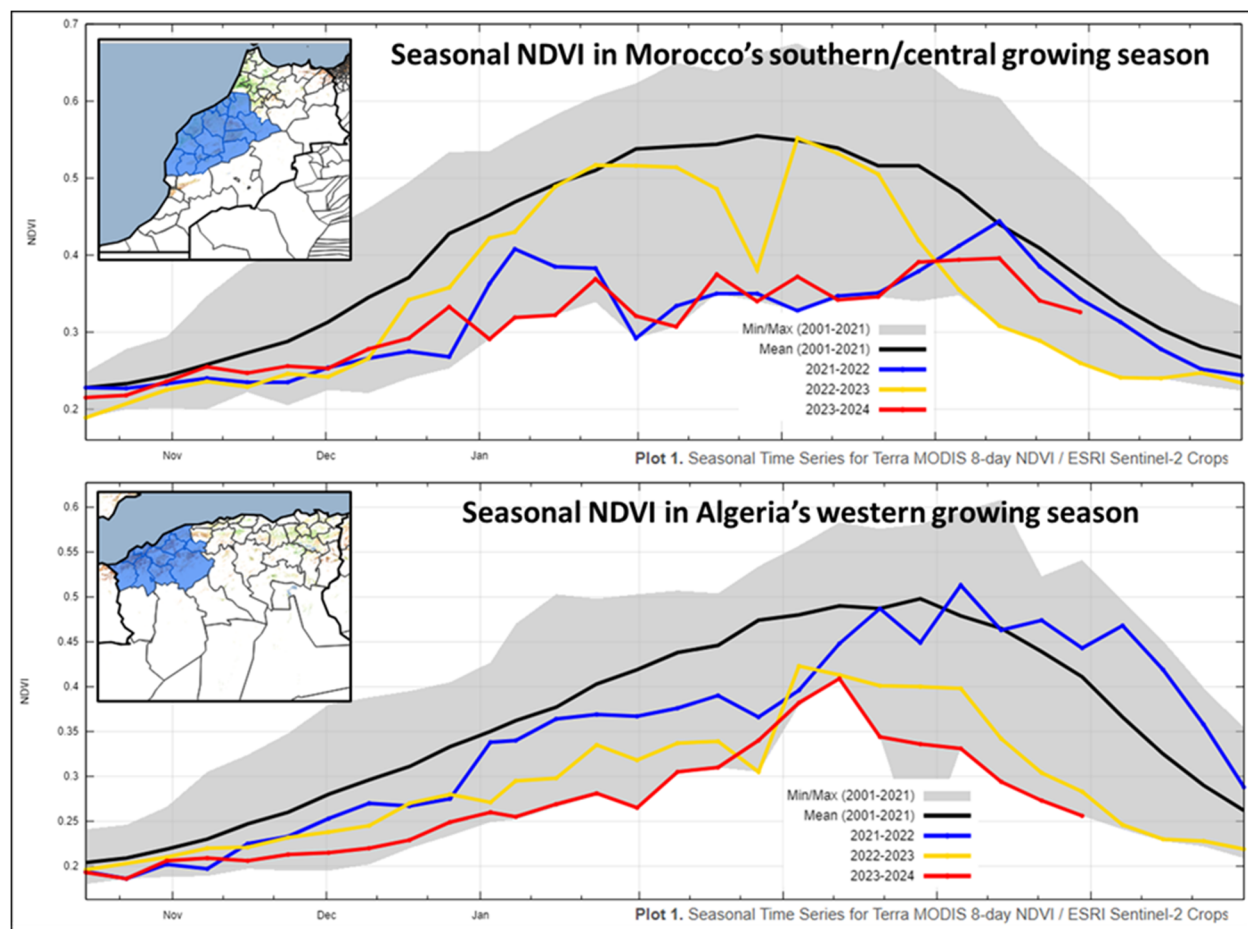
April crop travel by FAS-Rabat in the primary central/southern growing area of Morocco underscores the poor state of much of the crops in this region. In general, crop conditions deteriorated the further south the crop was located.



Conditions improved further north. Image is from southeast of Rabat (near Rommani).



Algeria is forecast to produce 3.0 mmt from 1.8 mha harvested area, with a 1.67 t/ha yield. This compares to MY 2023/24, with production of 2.7 mmt, harvested area of 1.8 mha and a yield of 1.50 t/ha. The MY 2024/25 crop is estimated to be 5 percent below the 5-year-average production level. Wheat is doing best in eastern areas of the country close to Tunisia where rainfall was most frequent and vegetation vigor remains the highest. Central Algeria also received rainfall that improved initial prospects; crop conditions there are close to average. A near-to-complete crop failure is likely to have occurred in the far west based on low precipitation totals, as confirmed by satellite imagery.

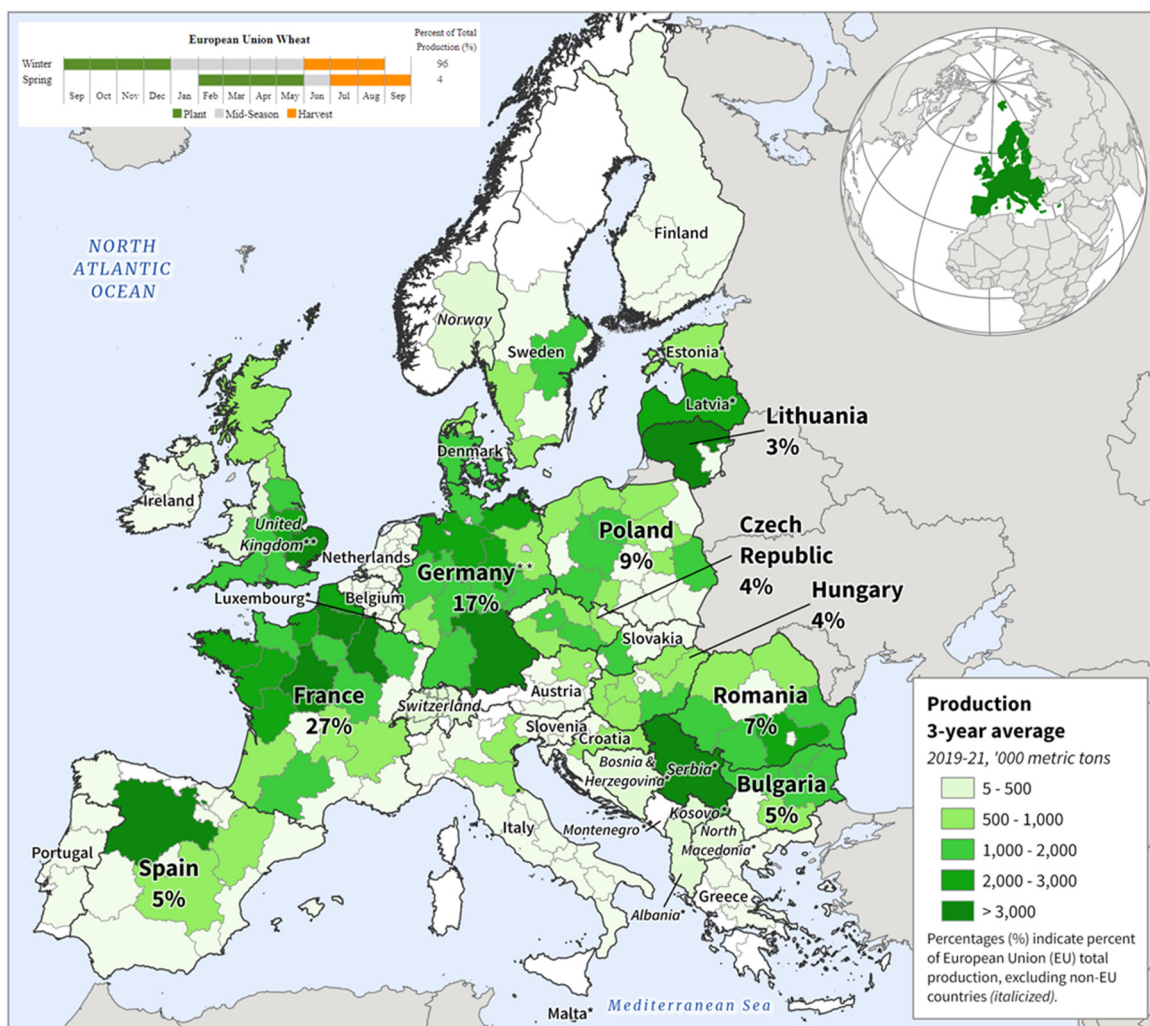


Source: USDA/NASA Global Agricultural Monitoring (GLAM) MODIS Terra 8-day NDVI

Tunisia's arable land is the smallest of the three countries, with total harvested area for MY 2024/25 estimated at 0.5 mha, significantly above last year's drought-affected 0.3 mha but similar to the 5-year average. Production is forecast at 1.1 mmt, up considerably (149 percent) from last year's 0.4 mmt when rainfall was particularly scarce and geographically limited. Yield is forecast at 2.20 t/ha compared to 1.34 t/ha last year and 2.1 t/ha for the 5-year average. Rainfall since autumn has been favorable in Tunisia, allowing a wide north-south band of ideal moisture conditions to set up. Last year, the MY 2023/24 crop was stymied because precipitation only skirted the coast of Tunisia, leaving most of the country high and dry. *(For more information, please contact Bryan.Purcell@usda.gov.)*

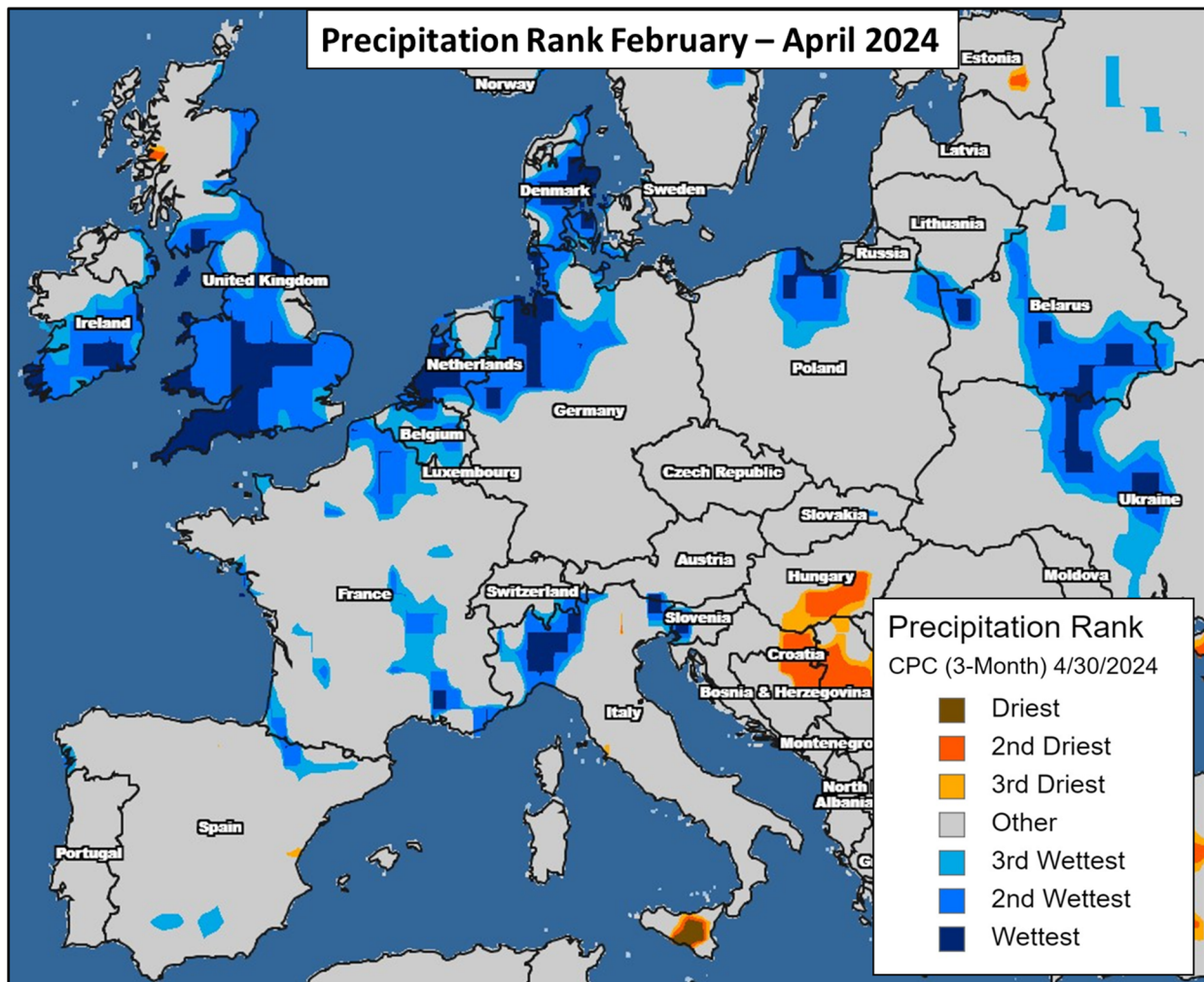
European Union Wheat: Mild, Wet Conditions Dominate Early Season for MY 2024/25

Europe: Wheat Production

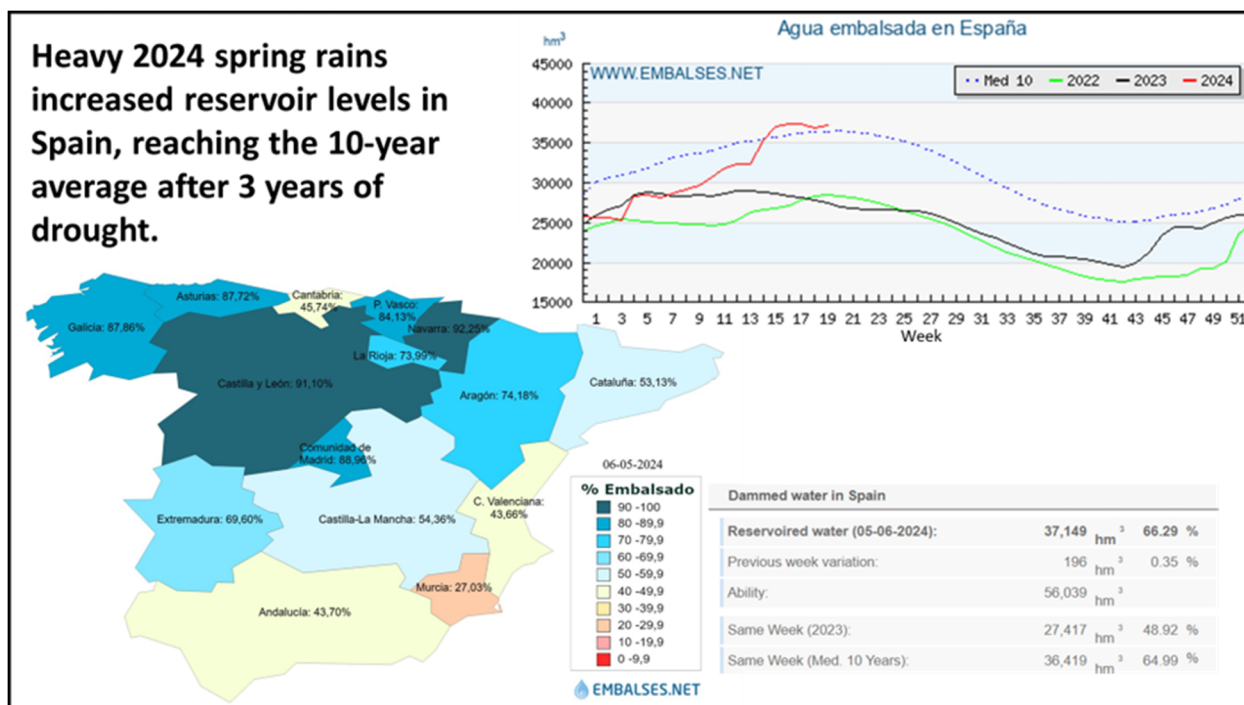


Source: Eurostat by Nomenclature of Territorial Units for Statistics (NUTS) 2 region, with exceptions indicated by * (NUTS 0/country-level data), or ** (NUTS 1 region); Average production years differ for United Kingdom (2017-19), Norway (2015-18), Bosnia and Herzegovina, Montenegro, Albania, Serbia, Kosovo (2020-22), and North Macedonia (2021-23)

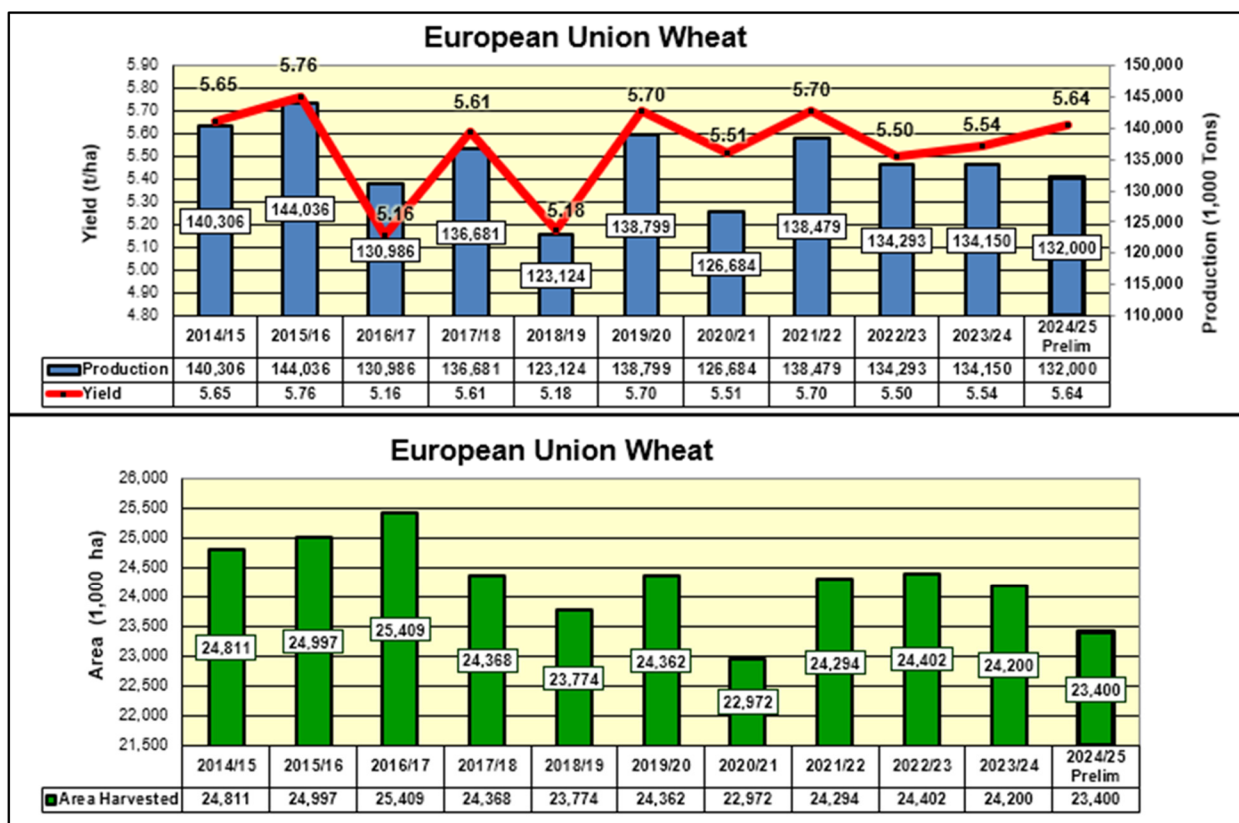
Wheat production in the European Union (EU) for marketing year (MY) 2024/25 is estimated at 132.0 million metric tons (mmt), down 2.2 mmt from last year and 2 percent below the 5-year average. Harvested area is estimated at 23.4 million hectares (mha), down 0.8 mha from last year and down 0.6 mha from the 5-year average. Yield is estimated at 5.64 tons per hectare (t/ha), 2 percent above last year and 1 percent above the 5-year average.



In the fall, rainfall prevented planting and farming activities in northwest Europe, causing planting delays, smaller acreage, and fewer input applications. Although frequent rain has contributed to a vigorous vegetative canopy in the cropping areas, concerns about recent excessive rainfall exists in areas of France and Germany. In some areas it has been the wettest or second wettest since 1981, as seen in the precipitation rank map. A reprieve from the recurring precipitation would be welcome in northwest Europe. One region where heavy spring rains have been welcomed, however, is Spain where rains have broken a 3-year drought that had significantly lowered yields. Heavy spring rains also provided relief in northern Italy, which had also experienced recent drought.



With the exception of some areas in southeastern Romania and Bulgaria, planting conditions last fall were largely beneficial with good soil moisture levels. Winter and spring recorded above-average temperatures, resulting in minimal-to-no winterkill during the winter months. Wheat has progressed rapidly through its growth cycle, with some region's being several weeks ahead-of-normal progress due to the very warm winter and spring conditions. One weather exception during this mild season was a week of freeze conditions that occurred in mid-to-late April. While there may have been some small burnback or localized damage in areas of France, Germany, Poland, Czechia (Czech Republic), and Slovakia, it is not expected to have caused significant damage. This event however, likely slowed down the very accelerated pace of wheat progress. Good conditions across most of Europe should help the mostly flowering wheat as it matures. Wheat is typically harvested in June and July in Europe. Wheat production in the three biggest producers is forecast at 33.2 mmt in France (36.3 mmt last year), 20.2 mmt in Germany (21.6 mmt last year), and 12.6 mmt in Poland (13.0 mmt last year); production is down due to smaller area.

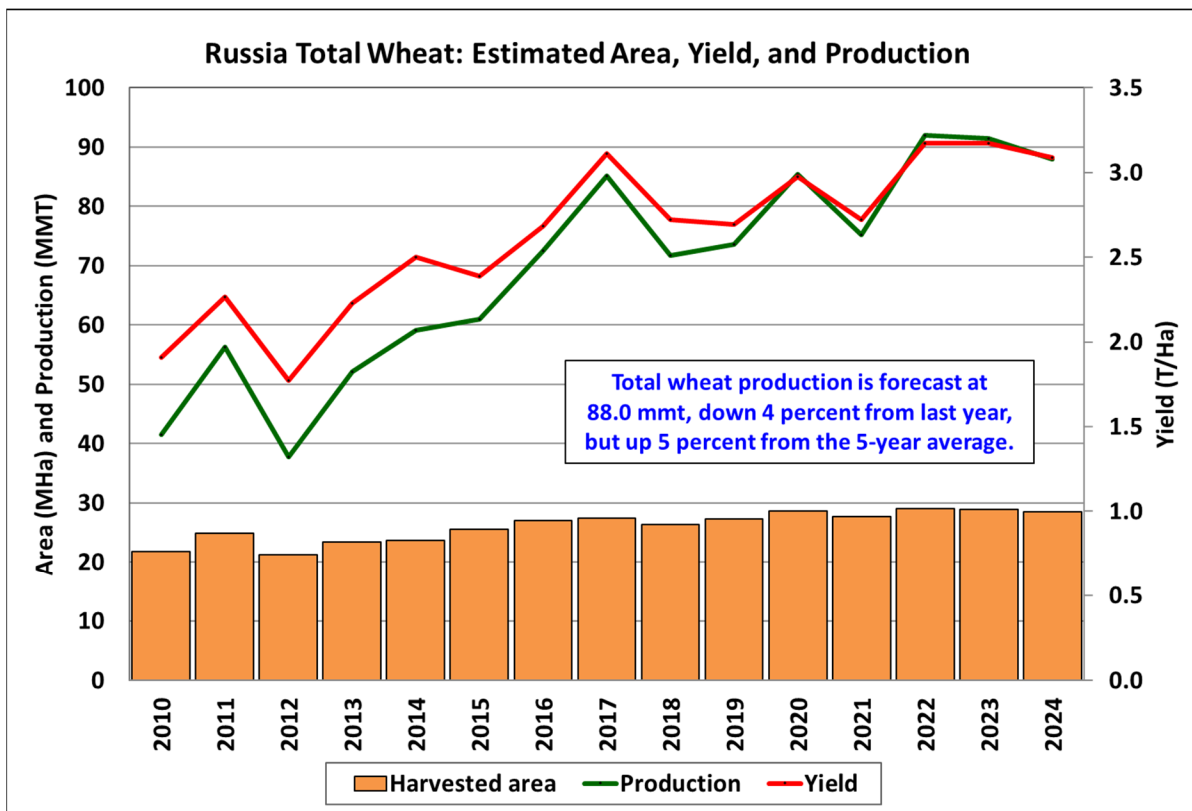


Source: USDA PSD Online

For country-specific area, yield, and production estimates within the EU, please go to PSD Online at <https://apps.fas.usda.gov/PSDOnline/app/index.html#/app/home>, and select “Downloadable Data Sets.” Select the zipped file for “EU Countries Area & Production.” (For more information, please contact Bryan.Purcell@usda.gov.)

Russia Wheat: Above-average MY 2024/25 Production Expected Despite Challenging Weather

Russia wheat production for marketing year (MY) 2024/25 is forecast at 88.0 million metric tons (mmt), down 4 percent from last year, but up 5 percent from the 5-year average. The forecast includes 64.0 mmt of winter wheat and 24.0 mmt of spring wheat. USDA crop production forecasts for Russia exclude estimated output from Crimea. Total wheat yield is forecast at 3.09 tons per hectare, down 3 percent from last year, but up 5 percent from the 5-year average. Total harvested area is forecast at 28.5 million hectares (mha), down 1 percent from last year, but up 1 percent from the 5-year average.

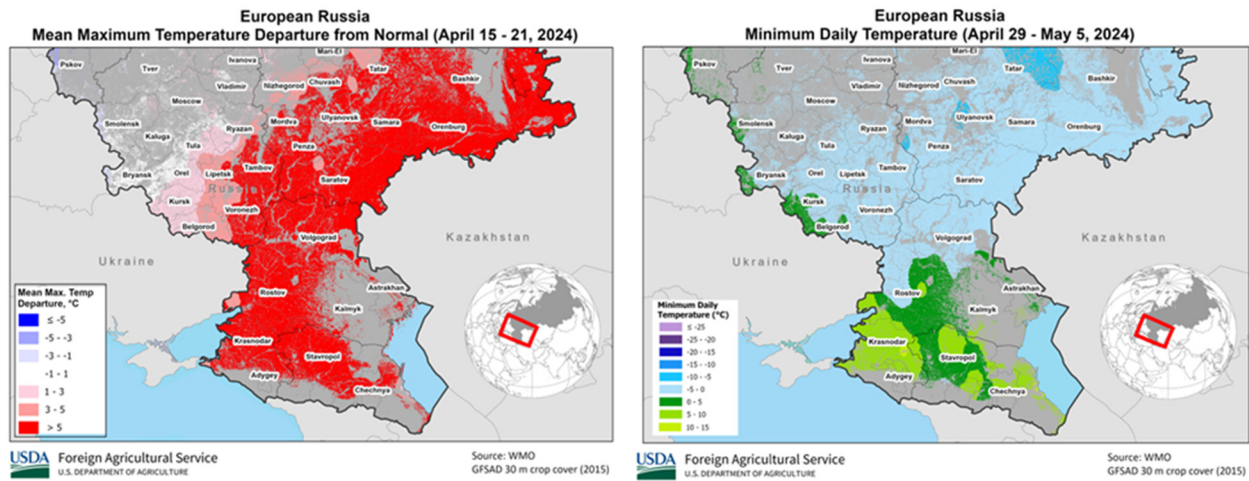


Source: USDA PSD Online

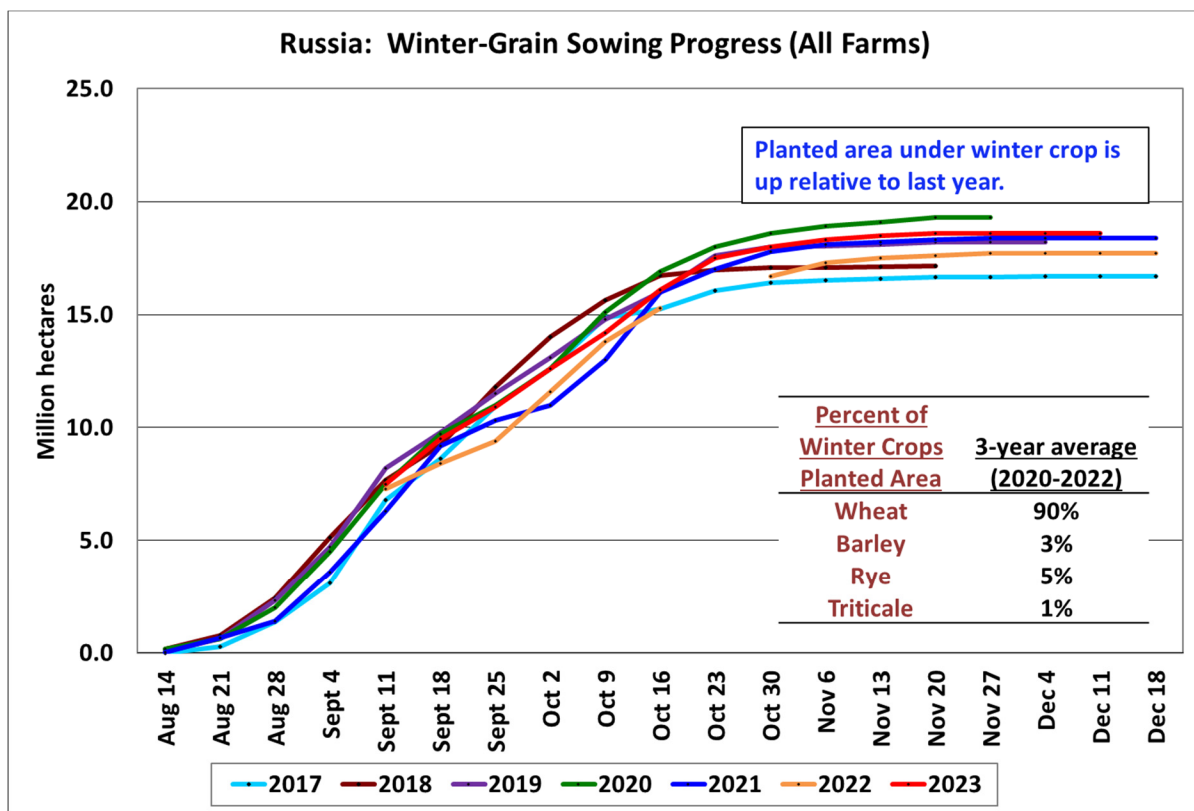
On average, winter wheat accounts for about 70 percent of total production. According to data from the Russian Ministry of Agriculture (MinAg), as of late-December 2023 winter crops were planted on an area of 18.8 mha. Russian data does not provide a break down per crop, but the main winter crops are wheat, barley, rye, and triticale. Winter wheat accounts for about 90 percent of the total winter grains planted area. USDA typically adjusts the MinAg planted number for expected winter losses. News reports and imagery from the NASA Soil Moisture Active Passive (SMAP) mission indicate near-average winter losses, which for winter wheat is about 4 percent.

After a dry September, beneficial October and November rains brought needed wetness and replenished the soil moisture reserves providing favorable conditions for crop germination. Crops entered dormancy under mixed to above-average conditions, except for some parts of the North Caucasus District, such as Stavropol, where conditions were worse than last season and below average. Overall, winter weather was favorable for crop development. Crops in the south broke dormancy under good conditions ahead of time in mid-February, while crops in the more northern regions broke dormancy in late-March, on par with normal. Spring weather was variable where below-average precipitation conditions across the south contrasted with the wetter and cooler western growing areas. Above-average mid-April temperatures accelerated winter crop growth but also posed a threat to the available soil moisture reserves, especially in the south where spring precipitation has been below normal. Recently, heat has abated somewhat, and radar-based data indicate some localized rain showers around Krasnodar. In the Central and part of the Southern Districts, satellite data shows an abnormally cold spell during the first week of May. Russia's winter wheat belt needs more favorable and consistent growing conditions during the remaining

part of May and June as winter wheat yield largely depends on the weather during these two months. Harvest of winter wheat will begin in July.



Spring wheat is mainly planted in the regions bordering Kazakhstan: the Volga, Urals, and Siberian Districts of Russia. Spring wheat planting typically starts in late April. Currently, soil moisture conditions are predominantly favorable across Russia’s major spring wheat growing regions. According to MinAg, as of April 26, spring wheat has been planted on an area of 1.1 mha, which is substantially behind last year’s pace, when planted area was 2.2 mha during the same time. Harvest of spring wheat will begin in late August.



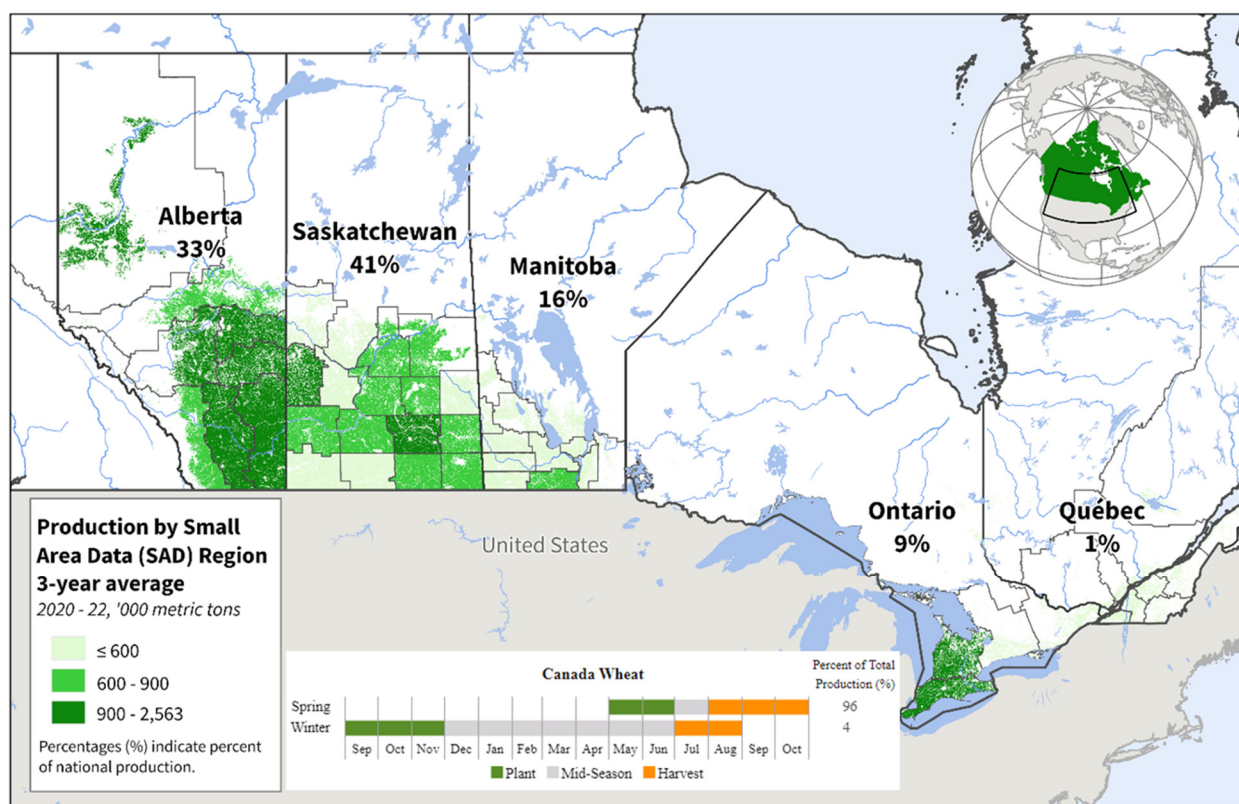
Source: Russian Ministry of Agriculture

Area, yield, and production estimates for Russia winter wheat and spring wheat are available on PSD Online. Select “Downloadable Data Sets” and open the zipped file for “Russia Wheat; Winter/Spring Area & Production” (For more information, please contact Iliana.Mladenova@usda.gov.)

Canada Wheat: MY 2024/25 Production Forecast Up with Higher Yields

USDA forecasts Canada wheat production for marketing year (MY) 2024/25 at 34.0 million metric tons (mmt), up 6 percent from last year and 8 percent above the 5-year average. Harvested area is estimated at 10.7 million hectares, up slightly from last year and 8 percent above the 5-year average. Yield is forecast at 3.18 metric tons per hectare, up 6 percent from last year.

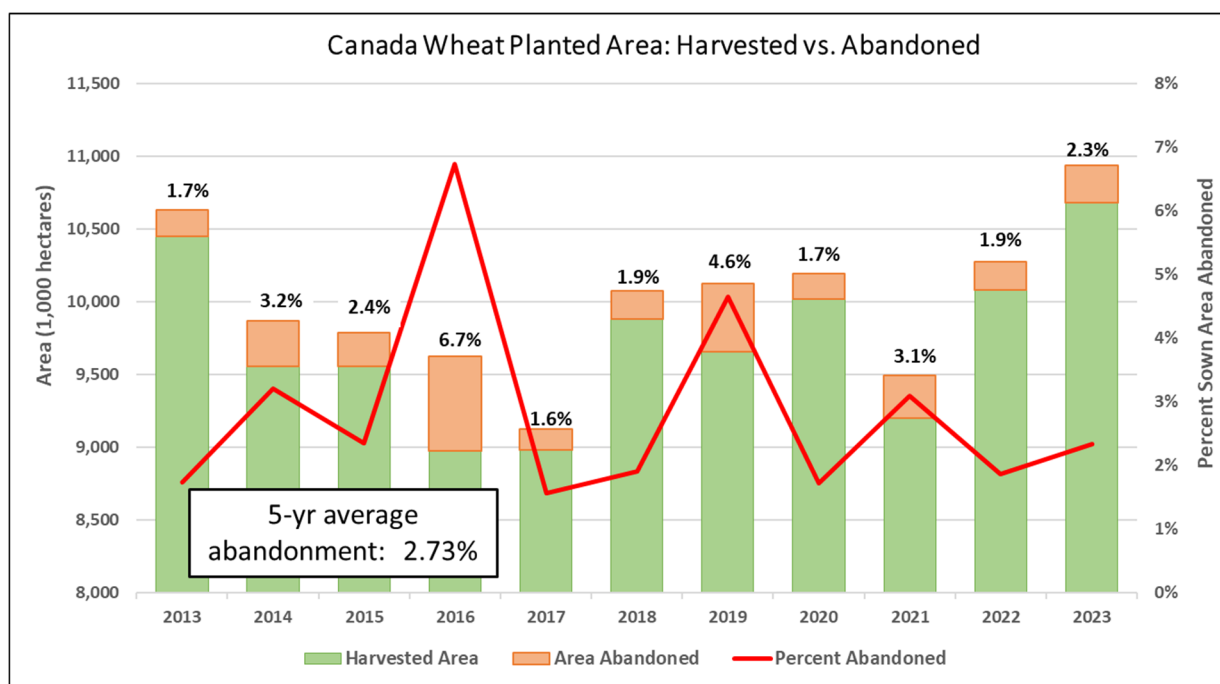
Canada Wheat Production



USDA Foreign Agricultural Service
U.S. DEPARTMENT OF AGRICULTURE

Sources: Statistics Canada, Estimated Production by Small Area Data (SAD) Region; Agriculture and Agri-Food Canada (AAFC), Annual Crop Inventory 2022 Crop Mask

Wheat planting is expected to be up slightly over 2023, according to Statistics Canada’s recently released March 2024 Principal Field Crop Areas report. According to FAS/Ottawa, this report is being released earlier than previous years and reflects changes to Statistics Canada’s collection strategy; seeding intentions are now collected in their December crop survey. Spring wheat area is expected to decrease by 1 percent, with durum wheat area increasing by 5 percent. Additionally, winter wheat area, planted last fall, is down 3 percent from last year.



Source: Statistics Canada

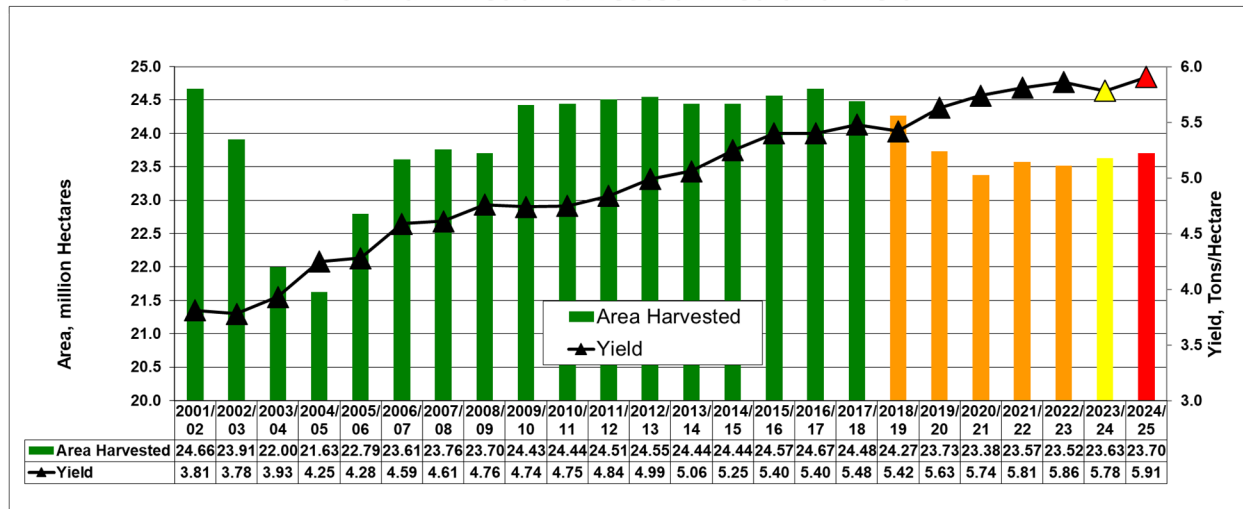
USDA expects a small amount of area planted to be abandoned, or not harvested each year. The abandonment rates reported in the above graphic do not factor winter wheat area lost to winterkill over the previous winter, and instead, factor only what is abandoned during the primary growing season. Spring varieties of wheat have lower abandonment rates than most other grains.

According to the Field Crop Unit of the Ontario Ministry of Agriculture, Food and Rural Affairs, the winter wheat stands look good across most parts of Ontario where the bulk of Canada’s winter wheat is grown. Recent precipitation has improved conditions in the Prairies for planting spring wheat, which accounts for over 90 percent of Canada’s wheat production. *(For more information, please contact Shannon.Moyo@usda.gov.)*

China Wheat: MY 2024/25 Production Increase Year-over-Year

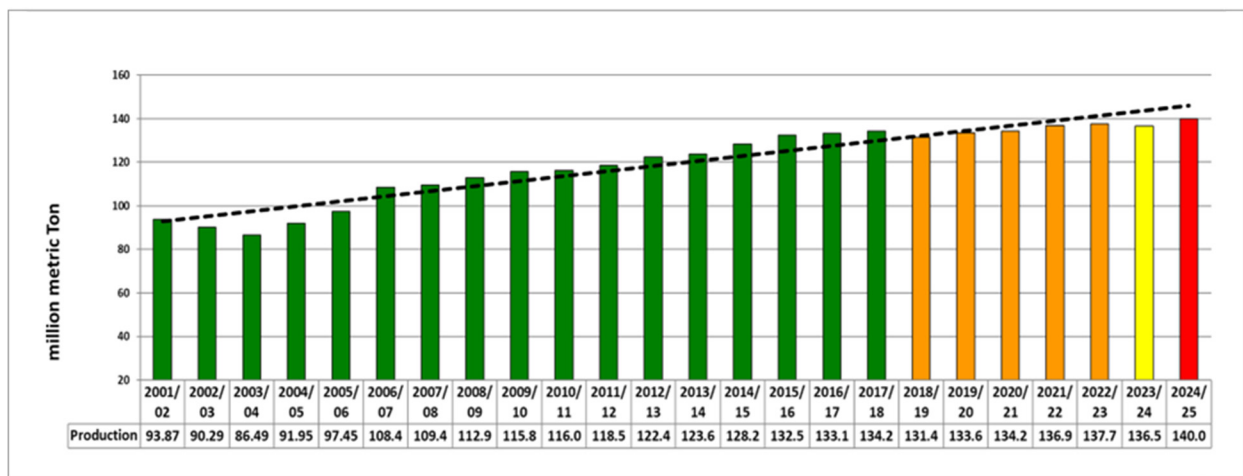
USDA forecasts China’s marketing year (MY) 2024/25 wheat production at a record 140.0 million metric tons (mmt), up 3.4 mmt or 2 percent from last year, and up 3 percent from the 5-year average of 135.8 mmt. Harvested area is estimated at 23.7 million hectares (mha), up 0.3 percent from last year. Yield is forecast at 5.91 metric tons per hectare (t/ha), up 2 percent from last year’s yield of 5.78 t/ha.

China Wheat Harvested Area and Yield



Source: USDA PSD Online

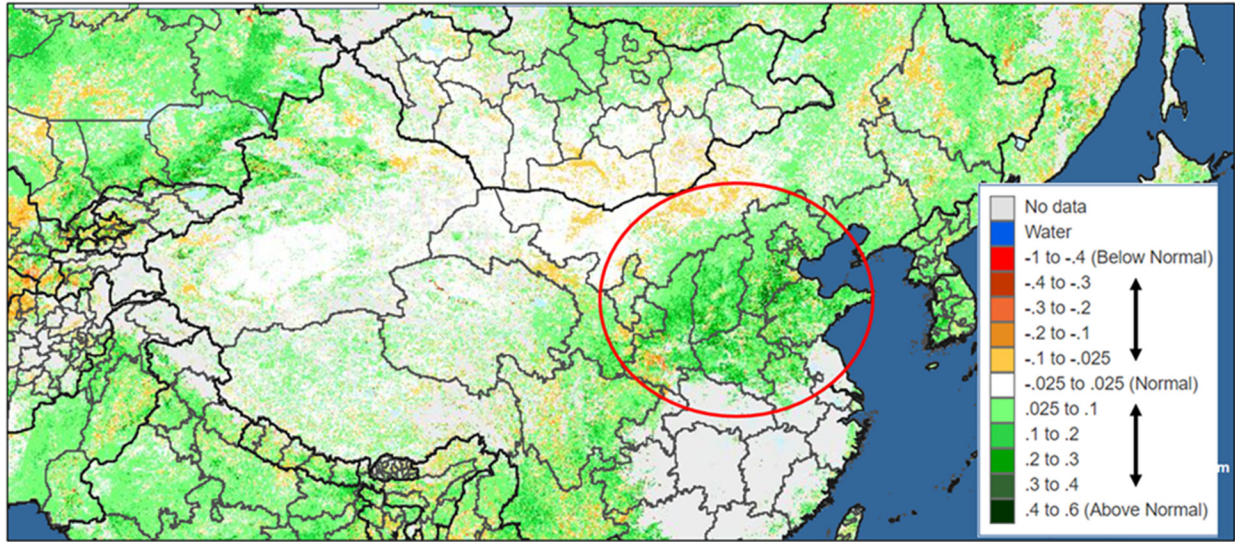
China Wheat Production



Source: USDA PSD Online

China's winter wheat is at advanced maturity stages and harvesting starts in mid-May and continues through the end of June. It is typically planted in mid-September through the end of October. Winter wheat accounts for 95 percent of total national wheat; spring wheat accounts for 5 percent and is sown in March through April and harvested in August to September.

China Major Wheat Provinces: Henan, Hebei, Shandong, Anhui, and Jiangsu In-Season NDVI Anomaly

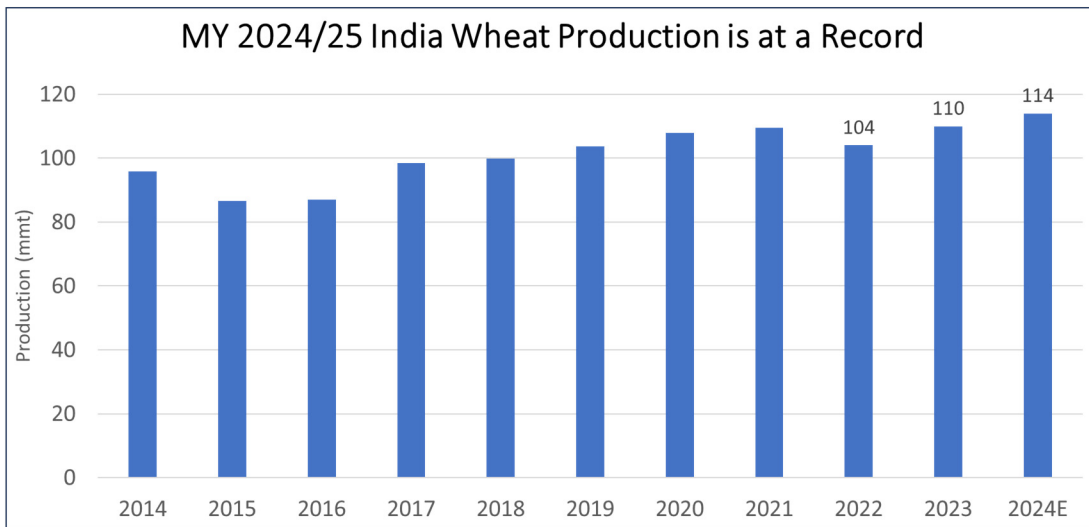


Source: USDA GLAM NDVI-MODIS NASA-GIMMS

Overall, the winter wheat season's soil moisture conditions during planting were wet to normal across the major growing regions including Henan, Hebei, Shandong, Anhui, and Jiangsu provinces. A regional view of the major wheat growing regions, using in-season satellite-derived Normalized Difference Vegetation Index (NDVI), revealed that the MY 2024/25 growing conditions in February and March during early vegetative periods were significantly better relative to the long-term average. The conditions in April indicated a favorable finish to grain filling and maturity, especially on the North China Plain. Production prospects are favorable. According to FAS/Beijing, the winter wheat growing conditions were better than last year, spring wheat planting was on time, and inputs were supplied without issues. *(For more information, please contact Dath.Mita@usda.gov.)*

India Wheat: MY 2024/25 Wheat Estimated at Record Levels

USDA estimates marketing year (MY) 2024/25 India wheat production at a record 114.0 million metric tons, up nearly 3 percent from last year's record. Harvested area is at a record 32.0 million hectares, up nearly 2 percent from last year. Yield is estimated to reach a record of 3.56 metric tons per hectare, up 1 percent from last year.



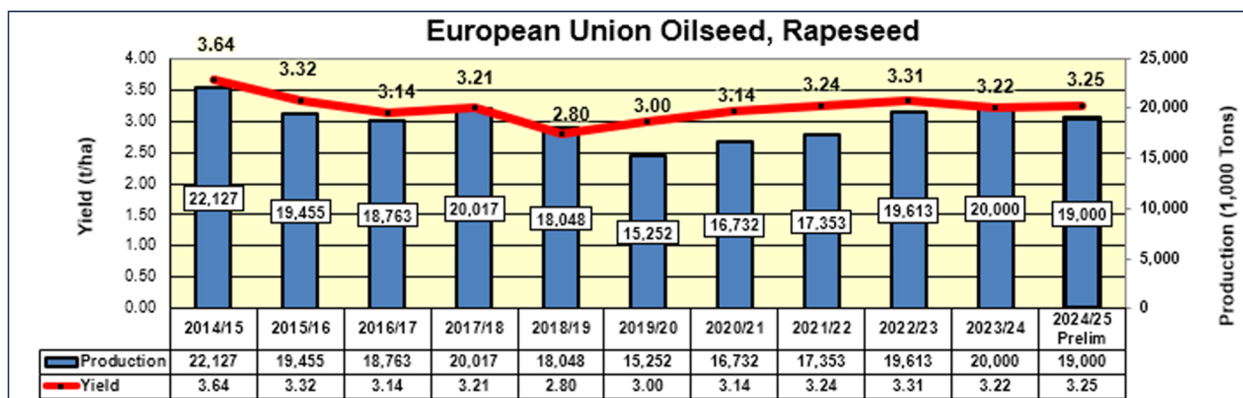
Source: USDA PSD Online

Favorable weather conditions, sufficient soil moisture at planting, and higher minimum support prices than last year resulted in record planting. The crop progressed from planting to vegetative and reproductive stages under ideal weather conditions, supporting a record yield. Additionally, adequate reservoir levels supported irrigation. Average temperatures were slightly below normal in the northern wheat belt as the crop entered the reproductive stage and grain fill in late February into March, further supporting crop vigor. The crop was harvested in mid-April.

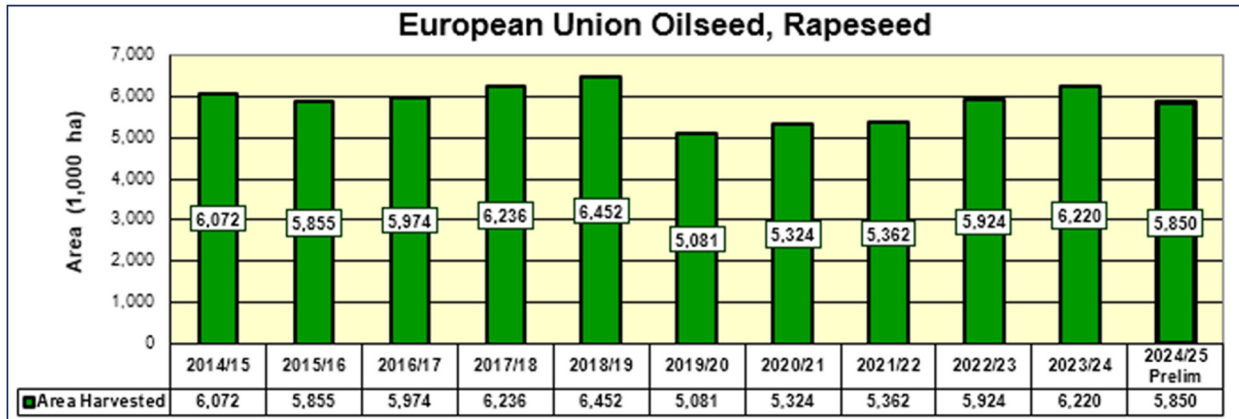
Wheat is grown only in the *rabi* season. It is planted from early November until January and harvested from late February until April. (For more information, please contact Arnella.Trent@usda.gov.)

European Union Rapeseed: MY 2024/25 Production Down on Reduced Area

European Union (EU) rapeseed production is forecast at 19.0 million metric tons (mmt), down 1.0 mmt or 5 percent below last year, but up 7 percent from the 5-year average of 17.8 mmt. Harvested area is estimated at 5.9 million hectares (mha), down 0.4 mha or 6 percent from last year, but up 5 percent above the 5-year average. Yield is estimated at 3.25 tons per hectare (t/ha), up slightly from last year's 3.22 t/ha, and 2 percent above the 5-year average of 3.18 t/ha.



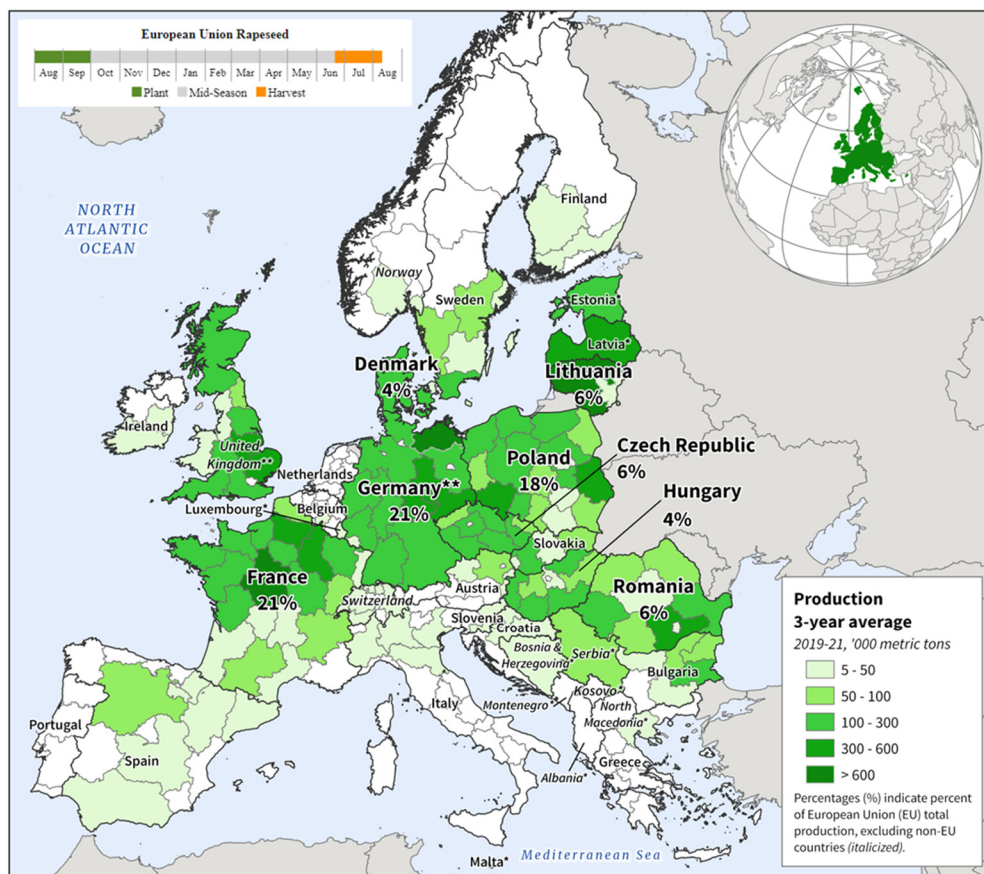
Source: USDA PSD Online



Source: USDA PSD Online

Rapeseed in the EU is predominantly planted in autumn. The winter and spring seasons since planting have seen above-average temperatures, resulting in minimal-to-no winterkill during the winter months. Rapeseed has progressed rapidly through its growth cycle, with some regions several weeks ahead-of-normal progress due to the very warm winter and spring conditions.

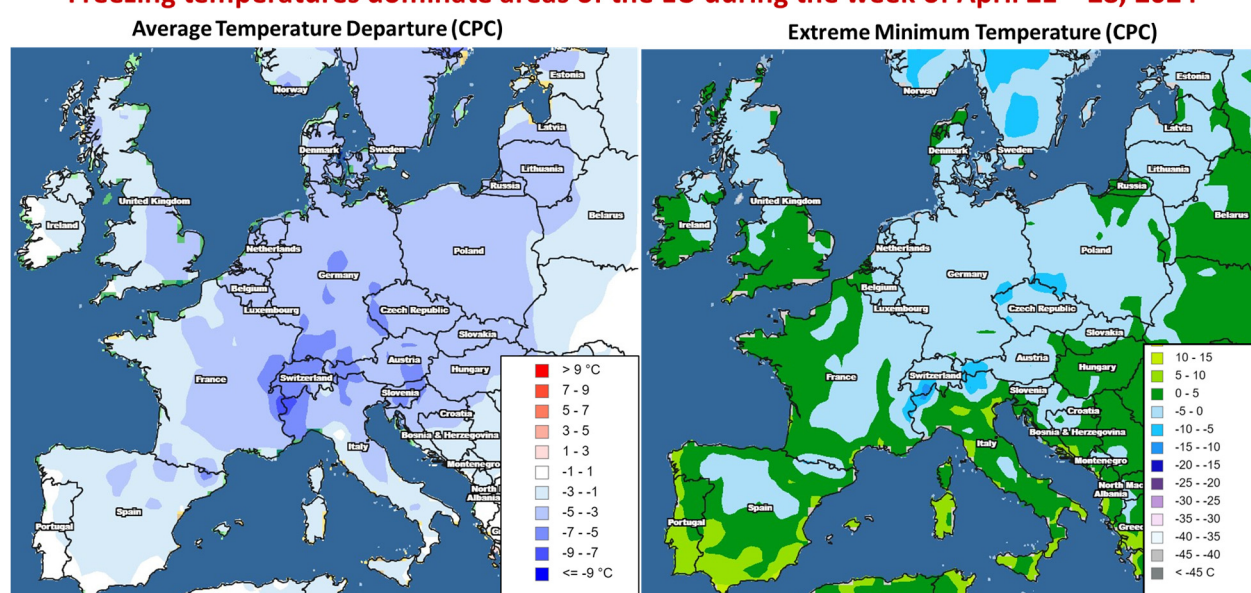
Europe: Rapeseed Production



Source: Eurostat by Nomenclature of Territorial Units for Statistics (NUTS) 2 region, with exceptions indicated by * (NUTS 0/country-level data), or ** (NUTS 1 region); Average production years differ for United Kingdom (2017-19), Norway (2015-18), Bosnia and Herzegovina (2020-22), Montenegro, North Macedonia, Albania (2021-23), Serbia, and Kosovo (2020-22)

Rapeseed is the primary oilseed in the EU, but a number of factors have combined to reduce estimated harvested area. These include decreased profitability, the ongoing ban on neonicotinoids, as well as a 4 percent set-aside mandate that affected planting decisions, even though the mandate was later recalled after rapeseed planting was finished. In addition, weather issues, including August and September 2023 dryness in the Balkans, likely reduced plantings in Romania. Additionally, in mid-to-late April there was an exceptional week of freeze conditions. The freeze was concentrated in France, Germany, Poland, Czechia (Czech Republic), and Slovakia during flowering. It is not expected to have caused significant damage as rapeseed can flower longer if needed. Potential freeze damage would need to be monitored. This event slowed down the very accelerated pace of rapeseed development. Typically, rapeseed harvest occurs in June and July.

Freezing temperatures dominate areas of the EU during the week of April 21 – 28, 2024



Source: NOAA Climate Prediction Center (CPC)

France, the EU’s largest rapeseed producer is forecast to harvest 4.4 mmt (4.3 mmt last year), followed by Germany at 4.1 mmt (4.2 mmt last year), and Poland at 3.4 mmt (3.7 mmt last year), all with lower area compared to MY 2023/24.

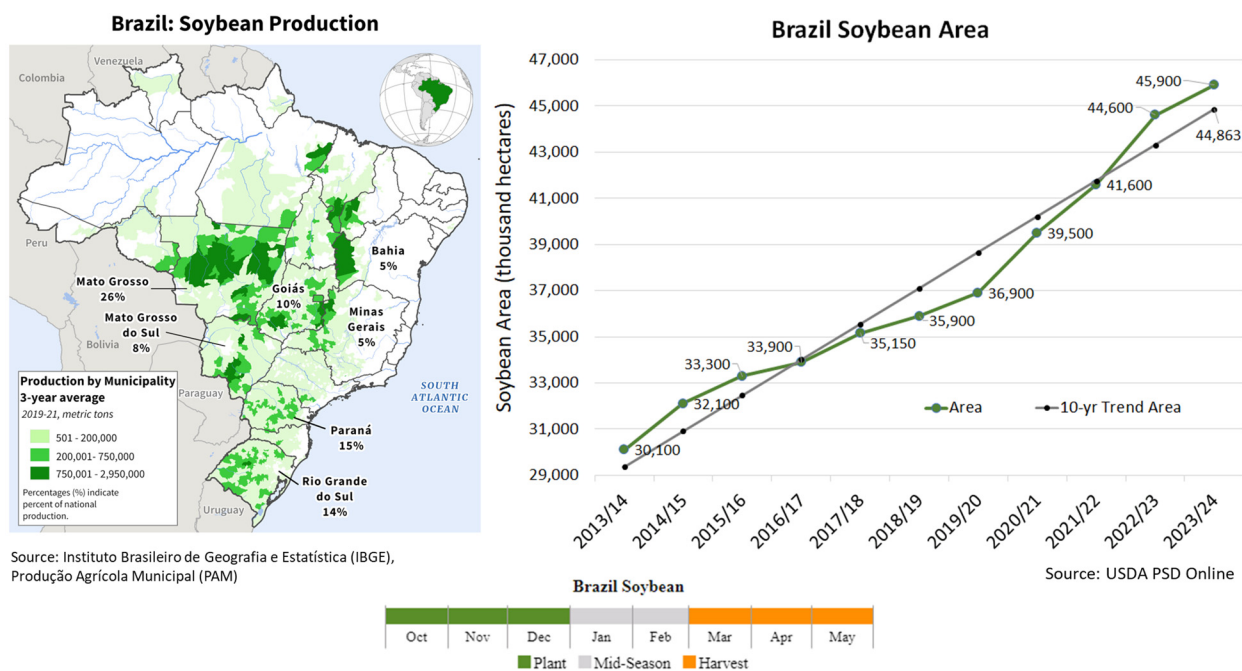
For country-specific area, yield, and production estimates within the European Union (EU), please go to PSD Online at <https://apps.fas.usda.gov/PSDOnline/app/index.html#/app/home>, and select “Downloadable Data Sets.” Select the zipped file for “EU Countries Area & Production.”
(For more information, please contact Bryan.Purcell@usda.gov.)

Brazil Soybeans: MY 2023/24 Production Prospects Reduced from Heavy Rains during Harvest in Southern Brazil

Soybean production in Brazil for marketing year (MY) 2023/24 is estimated at 154.0 million metric tons (mmt), down 1.0 mmt (1 percent) from last month, and down 8.0 mmt (5 percent) from the record crop in MY 2022/23. Harvested area is estimated at a record 45.9 million hectares

(mha), unchanged from last month, and up 1.3 mha (3 percent) from the previous year. Yield is estimated at 3.36 tons per hectare (t/ha), down 1 percent from last month, 8 percent from the previous year's record yield, and 2 percent below the 5-year average. Production prospects were lowered this month after excessive rainfall in late April damaged unharvested crops in the southern state of Rio Grande do Sul.

Soybean harvest for the major producing states began in January and will continue through late May. Brazil's *Companhia Nacional de Abastecimento* (CONAB) reported that national soybean harvest progress reached approximately 94 percent on May 5th. Harvest is complete for the major producing states Mato Grosso (26 percent of total production), Paraná (15 percent), Goiás (10 percent), and Mato Grosso do Sul (8 percent).

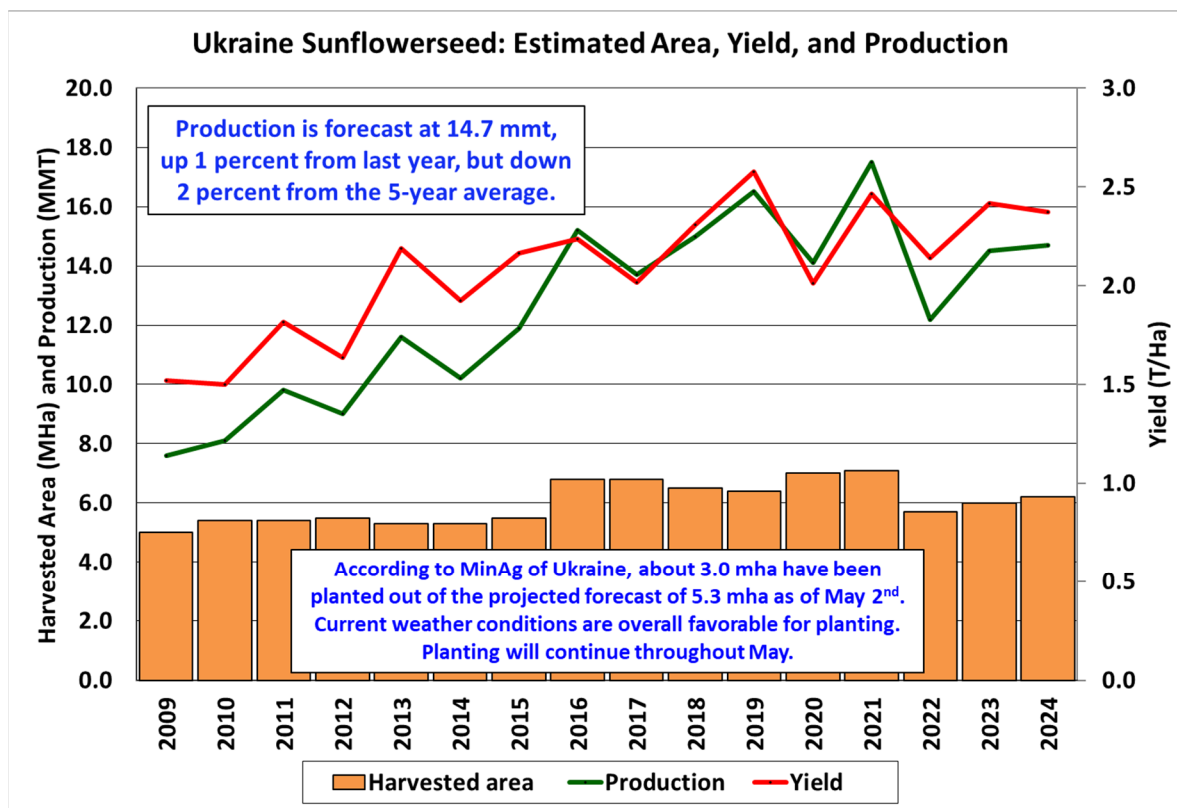


Recent crop condition reports from EMATER for the southern state of Rio Grande do Sul (14 percent of total production) stated the soybean crop was 76 percent harvested by May 2nd, and it was behind the average harvest pace of 83 percent. Heavy rains during the past two weeks slowed harvest progress in Rio Grande do Sul. The remaining crop to be harvested will have reduced seed quality caused by excessive rain damage. A record production of 22.2 mmt was estimated by EMATER in early March, but industry analysts have estimated that heavy rain damage on the unharvested crops will reduce soybean production prospects. Rio Grande do Sul harvests soybeans later than other major producing states because of a later planting schedule. (For more information, please contact Curt.Reynolds@usda.gov.)

Ukraine Sunflowerseed: High Profitability Drives an Increase in MY 2024/25 Production Despite the Conflict

Ukraine sunflowerseed production for marketing year (MY) 2024/25 is forecast at 14.7 million metric tons, up 1 percent from last year, but down 2 percent from the 5-year average. Yield is forecast at 2.37 tons per hectare, down 2 percent from last year, but up 2 percent from the 5-year

average. Harvested area is forecast at 6.2 million hectares (mha), up 3 percent from last year, but down 4 percent from the 5-year average.



Source: USDA PSD Online

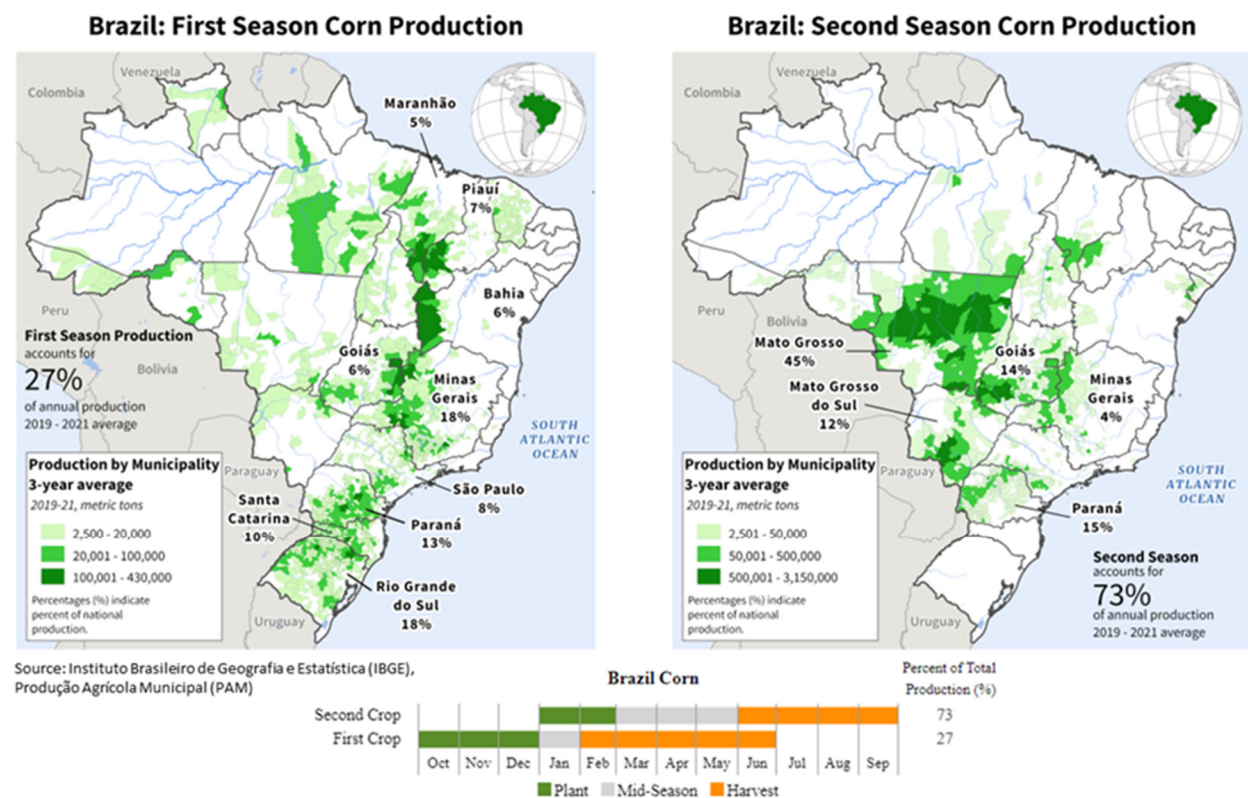
At present, Ukraine can be divided into two zones, areas in conflict and areas not in conflict. As elaborated by FAS/Kyiv in Ukraine, due to the ongoing war there is no official and reliable information about the status of Ukraine’s agriculture in the conflict zones. As a result, area and production data currently provided by FAS/Kyiv, Ukraine’s Ministry of Agriculture (MinAg) and the State Statistical Service of Ukraine, which inform USDA’s forecasts, do not reflect the whole country. For MY 2024/25 the MinAg operational field data information for both the winter and spring crops excludes the temporarily occupied territories of the Donetsk, Zaporizhzhia, Luhansk and Kherson regions. This is based on a note included in the MinAg operational field reports. MinAg also does not include Crimea. USDA crop production estimates for Ukraine include estimated output from Crimea. Crimean area and production numbers are extracted from the agricultural crop reports provided by the Russian Statistical Agency, Rosstat.

According to operational planting data published by MinAg, as of May 2nd, about 3.0 mha have been planted; this is 56 percent of the projected forecast of 5.3 mha. Planting will continue throughout May. Area for sunflowerseed is expected to increase year-to-year, due to the high profitability of this crop. Weather conditions and soil moisture availability have been favorable for planting.

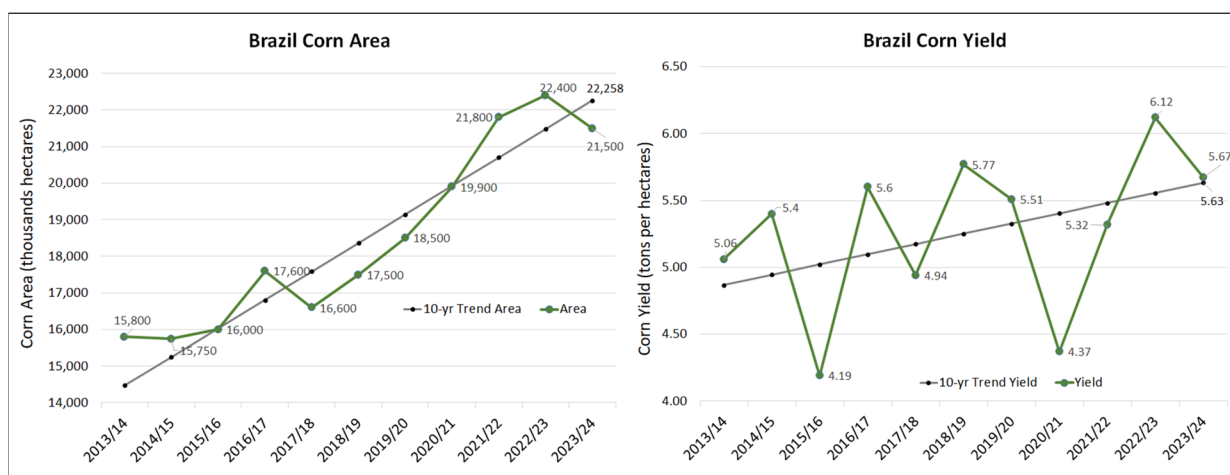
Last year’s yield was the third highest on record despite the ongoing conflict. Yield was boosted by favorable weather and abundant soil moisture availability during the growing season.

Generally, sunflowerseed yield has been increasing over the last decade as a result of the increased use of imported hybrid seeds and fertilizers. The high profitability of sunflowerseed and the high yield from last year indicate that farmers are still investing their available resources into buying hybrid seeds and purchasing agrochemicals. Current data suggests that the volume of fertilizer purchased has increased relative to last year. Thus, the projected MY 2024/25 sunflowerseed yield drop is driven by the assumption of average weather this season rather than input issues. (For more information, please contact Iliana.Mladenova@usda.gov.)

Brazil Corn: MY 2023/24 Production Prospects Reduced from Lower *Safrinha* Crop Area



Brazil corn production for marketing year (MY) 2023/24 is estimated at 122.0 million metric tons (mmt), down 2.0 mmt (2 percent) from last month, and down 15.0 mmt (11 percent) from the previous year's (MY 2022/23) record crop. Harvested area is estimated at 21.5 million hectares (mha), down 0.4 mha (2 percent) from last month and down 0.9 mha (4 percent) from the previous year's record area. Yield is estimated at 5.67 tons per hectare, down 7 percent from the previous year's record yield, but up 4 percent from the 5-year average yield. According to Brazil's *Companhia Nacional de Abastecimento* (CONAB) April report, area planted to second-season (*safrinha*) corn is down 1.4 mha (8 percent) compared to the previous year.

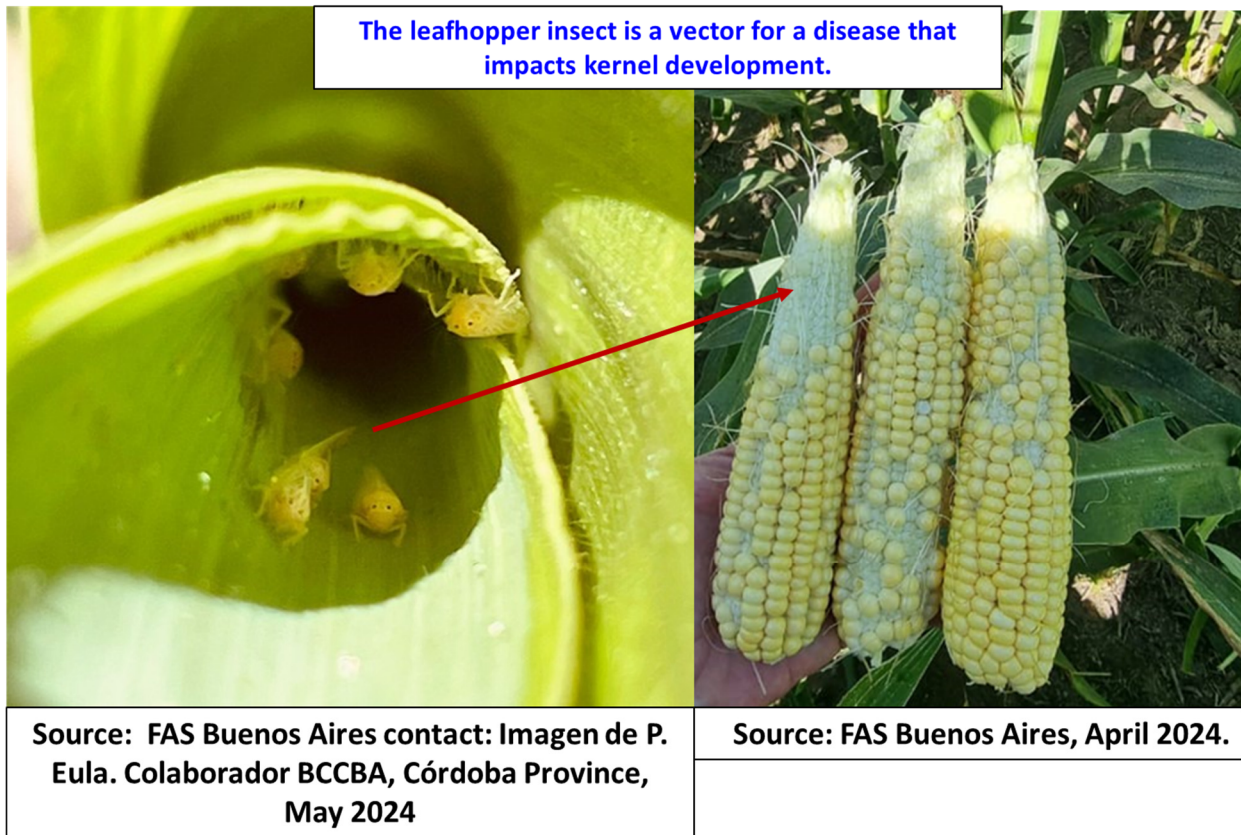


Source: USDA PSD Online

Harvest for the first-season crop (19 percent of total production) is slightly behind last year's pace of 68 percent, and first-season yields are slightly below the 5-year average as reported by CONAB in April. Planting is complete for the *safrinha* crop (78 percent of total production), and *safrinha* yields are reported to be near average for the major producing *safrinha* states of Mato Grosso (45 percent of *safrinha* production), Goiás (14%), and Paraná (15%). The second-season harvest will begin in May for the top-producing Mato Grosso and Paraná states, and the peak *safrinha* harvest period ranges from June to August. (For more information, please contact Curt.Reynolds@usda.gov.)

Argentina Corn: Production for MY 2023/24 is Down Due to Widespread Insect Infestation

Argentina corn production for marketing year (MY) 2023/24 is estimated at 53.0 million metric tons, down 4 percent from last month, but up 47 percent from the previous year (MY 2022/23). Yield is estimated at 7.57 tons per hectare, down 4 percent from last month, but up 42 percent from last year. Harvested area is estimated at 7.0 million hectares (mha), unchanged from last month, but up 4 percent from last year.



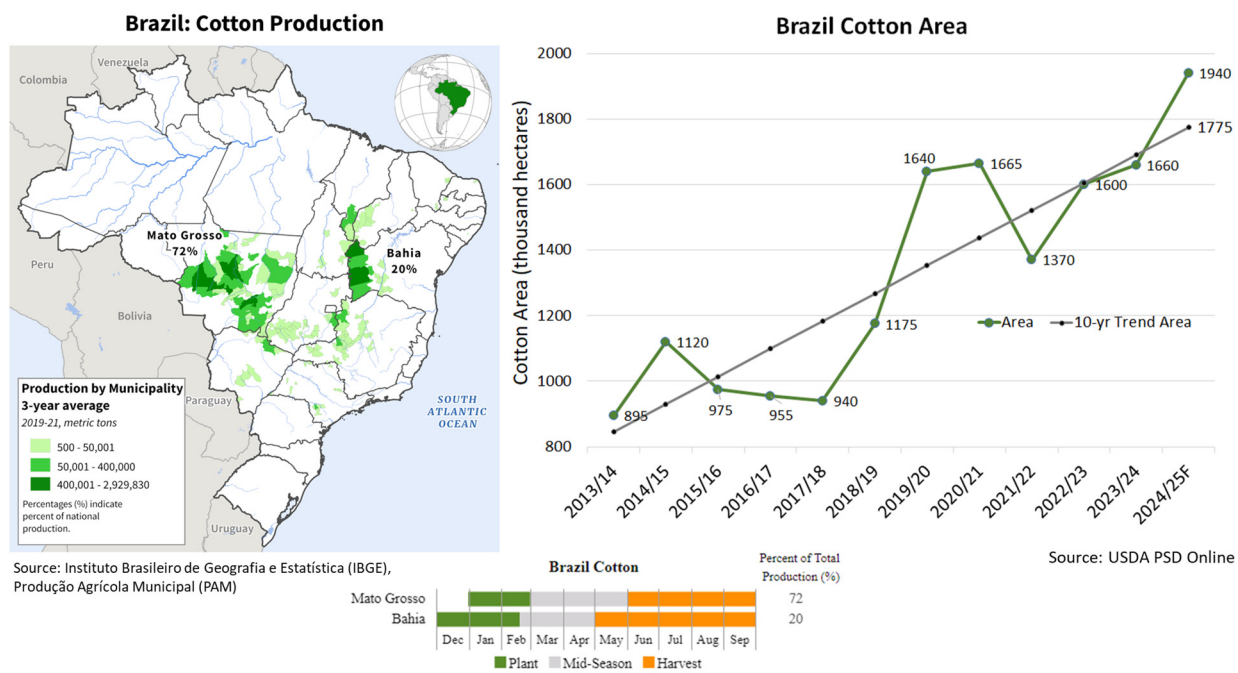
Source: FAS Buenos Aires contact: Imagen de P. Eula. Colaborador BCCBA, Córdoba Province, May 2024

Source: FAS Buenos Aires, April 2024.

Planting occurs from late September until early February, but there are two distinct periods; early planted corn that occurs from late September until early December and late-planted corn that occurs from early December until early February. This month, Bolsa de Cereales Buenos Aires increased their corn planted area forecast to 7.6 mha and USDA expects abandonment this year to be above average due to an infestation of the corn leafhopper insect. The leafhoppers transmit bacteria, which impacts the development of the corn kernels. Industry contacts report partially developed corn cobs with very light weight and of poor quality. Harvest has begun and is 22 percent complete as of early May, and this portion of the harvest mostly reflects the early-planted corn, which was not as impacted by the insects. The full impact of leafhopper damage will be realized once harvest progresses to the late-planted corn areas. *(For more information, please contact Katie.McGaughey@usda.gov.)*

Brazil Cotton: MY 2024/25 Record Forecast Area and Production

Brazil’s marketing year (MY) 2024/25 cotton production is forecast at a record 16.7 million 480-pound bales, up by 2.1 million bales (15 percent) from last year’s record and 31 percent above the 5-year average. Harvested area is forecast at 1.94 million hectares (mha), up 280,000 hectares (17 percent) from last year. Cotton yield is forecast at 1,874 kilograms per hectare (kg/ha), down 2 percent from the previous year’s record yield, but up 7 percent from the 5-year average. Harvest will begin in June for the state of Mato Grosso, where 73 percent of national cotton production is grown. Second-season cotton in Mato Grosso is planted after soybeans are harvested.

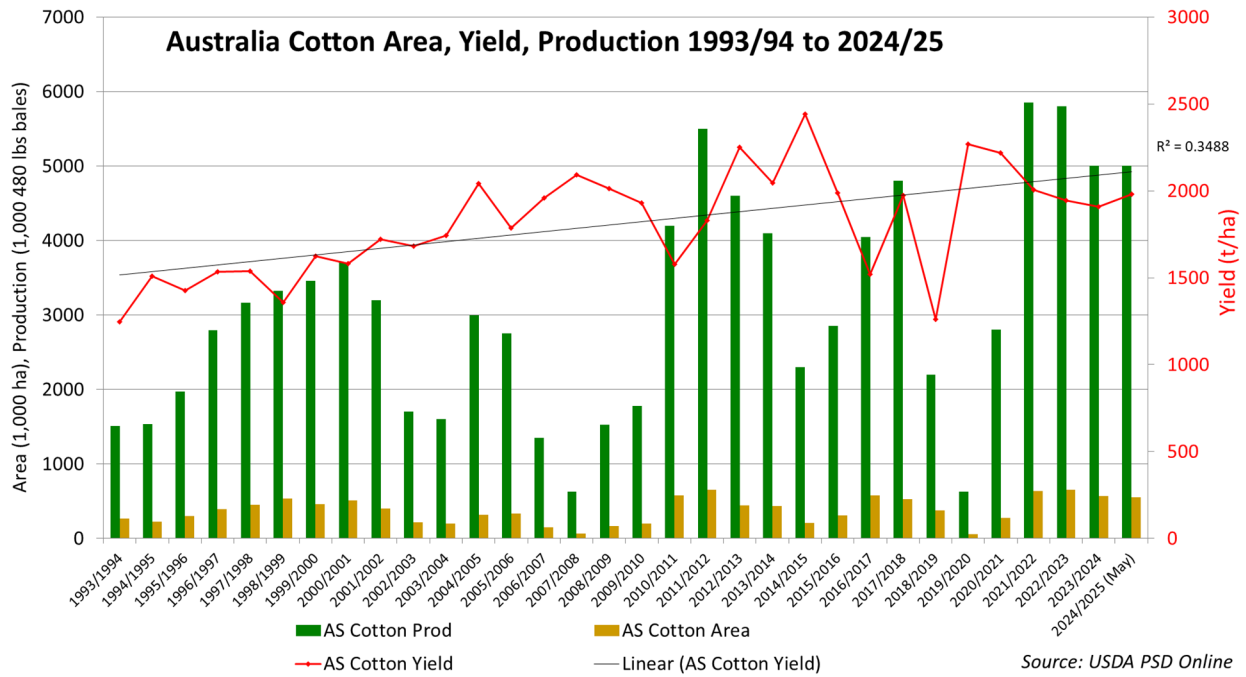


The full-season cotton crop was planted from late November to early February in western Bahia, where 17 percent of the total crop is cultivated. Seasonal rainfall was above average in Bahia, but March rainfall was below average which reduced yield potential. Yields were forecasted in late April to be 6 percent less than last year’s record yield, according to the *Associação de Agricultores e Irrigantes da Bahia* (AIBA).

The second-season cotton crop in Mato Grosso was planted from January through early March. Seasonal rainfall was below average, but April rainfall was above average which improved production prospects. Yields were forecasted to be 6 percent below last year’s record yield, as reported by Mato Grosso’s *Instituto Mato-Grossense de Economia Agropecuária* (IMEA) in early May. The majority of the cotton in Brazil will be harvested from June to August. (For more information, please contact Curt.Reynolds@usda.gov.)

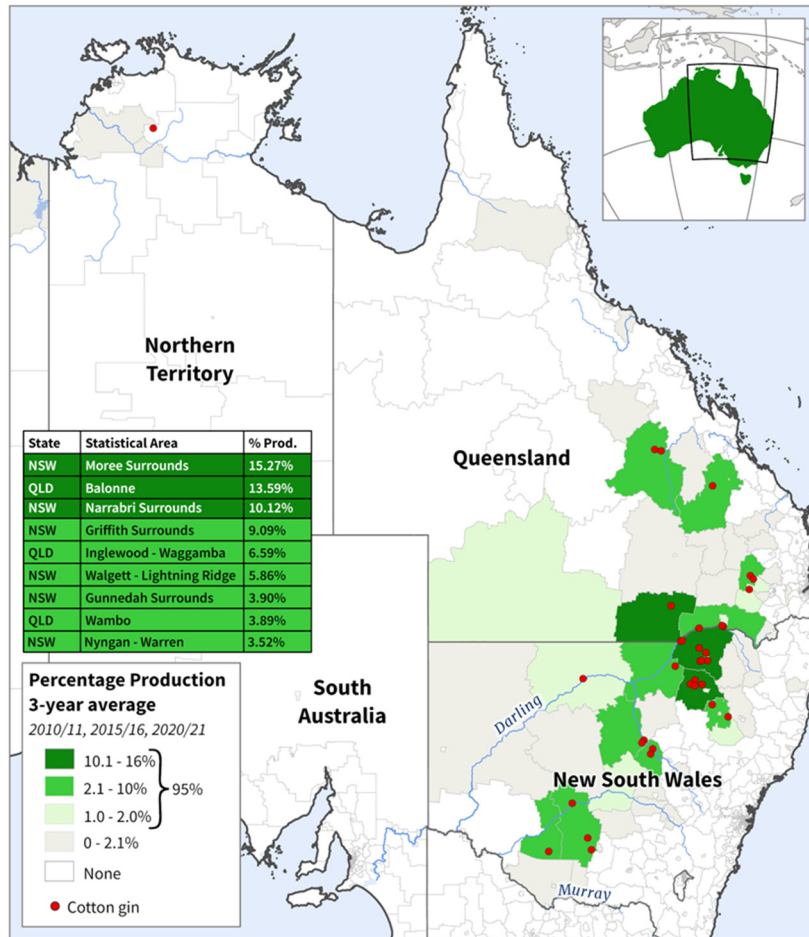
Australia Cotton: MY 2023/24 Area Revised Up on Late Rainfall

Australia’s marketing year (MY) 2023/24 cotton production is forecast at 5.0 million 480-pound bales, up 0.2 million bales or 4 percent from last month but down 14 percent from last year. Harvested area is estimated at 570,000 hectares (ha), up 55,000 ha or 11 percent from last month, but down 80,000 ha or 12 percent from last year.



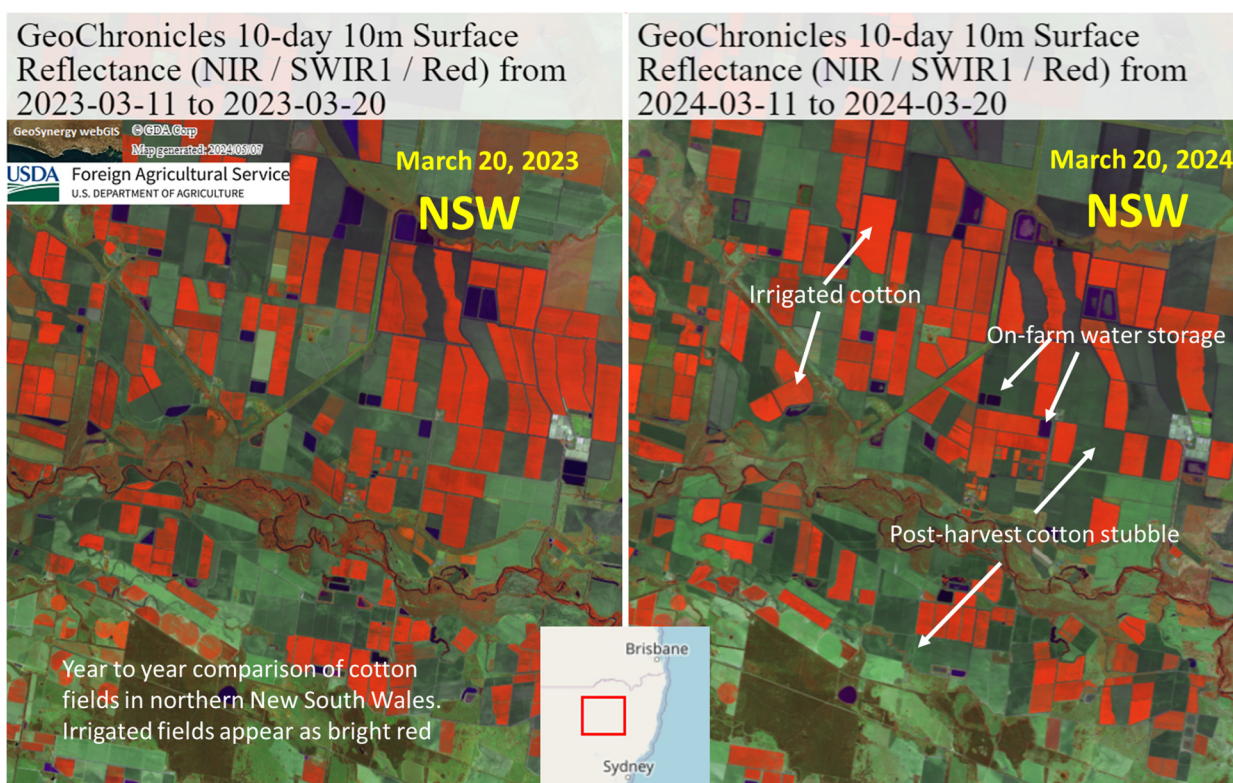
Industry reports indicate that because growing conditions have been favorable since the start of 2024, irrigated cotton yields will be better than estimated. Also, the more southern areas, with substantially higher planted area, are reported to be having one of their best years ever from a yield and quality expectation perspective. Dryland cotton area is estimated higher due to favorable precipitation in the later portion of the planting window.

Australia: Irrigated Cotton Production



Sources: Australian Bureau of Statistics, Agricultural Censuses of 2010/11, 2015/16, and 2020/21 (2021 SA2 Boundaries); Namoi Cotton; LDC Cotton; Queensland Cotton; Koramba Ginning; North West Cotton; Australian Food and Fibre; Carrington Cotton; Brighann Cotton; Southern Cotton; Carroll Cotton

Yield is forecast at 1,910 kilograms per hectare, down 6 percent from last month and 2 percent from last year. Yield is expected to decrease year-to-year because of an estimated increase in the share of the total area sown to dryland cotton this season as compared to last. Dryland cotton yields are substantially lower than irrigated yields. Irrigated cotton area comprises about 90 percent of Australia's total cotton production. Dryland cotton planting tends to vary with the seasonal weather forecast and prices at sowing.



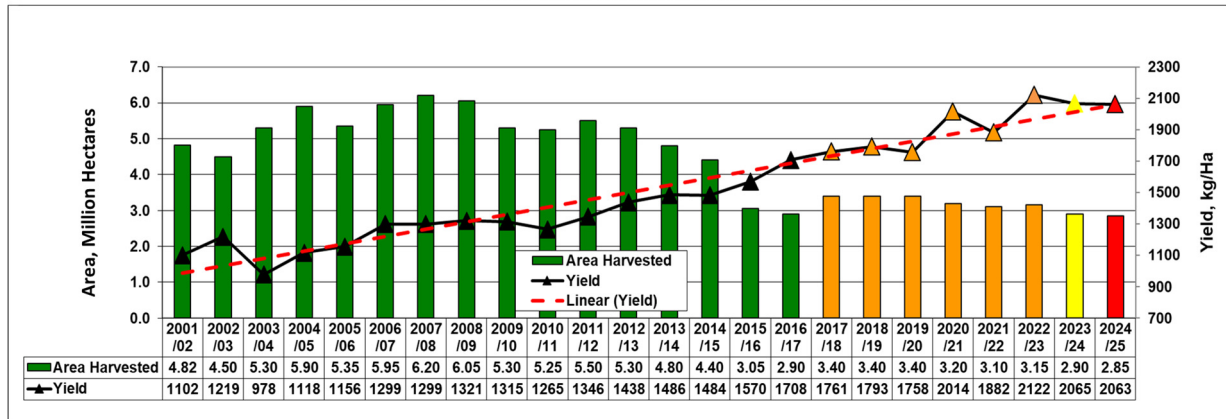
Source: GDA GeoChronicles 10-day 10m Surface Reflectance (NIR/ SWIR1/Red)

Cotton and sorghum are the two dominant summer crops in eastern Australia. Cotton planting typically begins in September with October being the primary planting month. Harvest begins in March and peaks in April. The two major cotton producing states are New South Wales (62 percent) and Queensland (38 percent) based on the current 3-year average. *(For more information, please contact James.Crutchfield@usda.gov.)*

China Cotton: MY 2024/25 Production Decreased Year-over-Year

USDA forecasts China's marketing year (MY) 2024/25 cotton production at 27.0 million 480-pound bales (5.9 million metric tons), down 2 percent from last year and down approximately 5 percent from the 5-year average of 28.4 million bales. Harvested area is estimated at 2.9 million hectares (mha), down 2 percent from last year, and down 10 percent from the 5-year average of 3.2 mha. In recent years, cotton planted area has been on a decreasing trend due to continued area declines on the North China Plain and in the Yangtze River basin. Yield is forecast close to the long-term trend value at 2,063 kilograms per hectare (kg/ha), slightly down from last year's yield of 2,065 kg/ha, but 5 percent above the 5-year average of 1,968 kg/ha. The yield potential continues to follow the long-term trend due to the increasing quantity of cotton produced in Xinjiang province, where yields have nearly doubled compared to elsewhere in the country. Approximately 90 percent of total China cotton is now produced in Xinjiang province on an estimated 2.55 million hectares, according to industry sources.

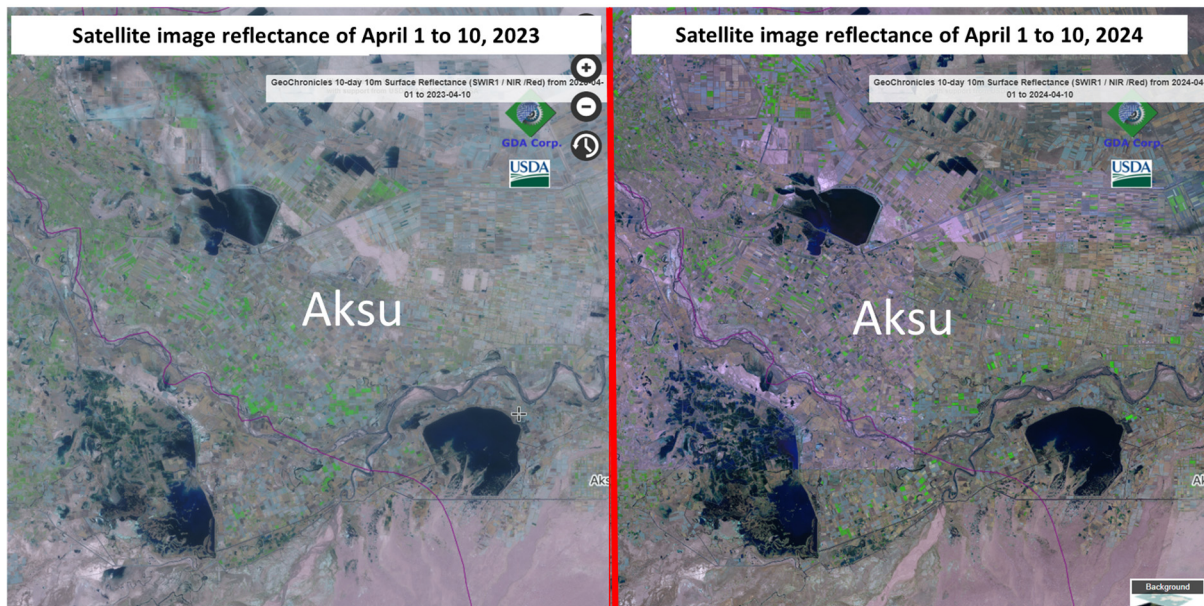
China Cotton Harvested Area and Yield



Source: USDA PSD Online

Cotton sowing is underway. The typical China cotton growing season is April to October. In Xinjiang, where most of the cotton is produced, planting starts in April and ends in mid-May. Xinjiang cotton is irrigated, and reservoir levels indicate similar water availability this year compared to last year. In contrast, the Yellow River and Yangtze River basins are predominantly rainfed; planting there begins in late April and extends through May. Soil moisture conditions are currently favorable for planting and emergence.

Reservoir Levels Shown in Aksu Prefecture of Xinjiang Indicate Similar Water Availability this Year as Last Year



Source: GDA GeoChronicles 10-day 10m Surface Reflectance (SWIR1/NIR/Red)

Xinjiang cotton farmers continue to be encouraged by the government's maintenance of farming incentives. According to FAS/Beijing, Xinjiang farmers continue to benefit from a target-price subsidy, transportation subsidies, and scale farming subsidies. *(For more information, please contact Dath.Mita@usda.gov.)*



**World Agricultural Production
U.S. Department of Agriculture**

Foreign Agricultural Service / Global Market Analysis
International Production Assessment Division (IPAD)
Ag Box 1051, Room 4630, South Building
Washington, DC 20250-1051

<https://ipad.fas.usda.gov/>

Telephone: (202) 720-1662 Fax: (202) 720-1158

This report uses information from the Foreign Agricultural Service’s (FAS) global network of agricultural attachés and counselors, official statistics of foreign governments and other foreign source materials, and the analysis of economic data and satellite imagery. Estimates of foreign area, yield, and production are from the International Production Assessment Division, FAS, and are reviewed by USDA’s Inter-Agency Commodity Estimates Committee. Estimates of U.S. area, yield, and production are from USDA’s National Agricultural Statistics Service. Numbers within the report may not add to totals because of rounding. This report reflects official USDA estimates released in the World Agricultural Supply and Demand Estimates (WASDE-584), May 10, 2024.

Printed copies are available from the National Technical Information Service. Download an order form at http://www.ntis.gov/products/specialty/usda/fas_a-g.asp, or call NTIS at 1-800-363-2068.

The FAS International Production Assessment Division prepared this report. The next issue of World Agricultural Production will be released after 12:00 p.m. Eastern Time, June 12, 2024.

Conversion Table

Metric tons to bushels

Wheat, soybeans	=	MT * 36.7437
Corn, sorghum, rye	=	MT * 39.36825
Barley	=	MT * 45.929625
Oats	=	MT * 68.894438

Metric tons to 480-lb bales

Cotton	=	MT * 4.592917
--------	---	---------------

Metric tons to hundredweight

Rice	=	MT * 22.04622
------	---	---------------

Area & weight

1 hectare	=	2.471044 acres
1 kilogram	=	2.204622 pounds



For further information, contact:
U.S. Department of Agriculture
Foreign Agricultural Service
Global Market Analysis
International Production Assessment Division
Ag Box 1051, Room 4630, South Building
Washington, DC 20250-1051

Telephone: (202) 720-1662

Fax: (202) 720-1158

GENERAL INFORMATION

Senior Director	Ronald Frantz	202-720-4056	ronald.frantz@usda.gov
Director	Robert Tetrault	202-720-1071	robert.tetrault@usda.gov
USDA Remote Sensing Advisor	Vacant		
Sr. Analyst/Technical Lead	Curt Reynolds, Ph.D.	202-690-0134	curt.reynolds@usda.gov
Sr. Analyst/ Satellite Imagery Archives Manager/Technical Lead	Dath Mita, Ph.D.	202-720-7339	dath.mita@usda.gov
Sr. Analyst/Technical Lead	Jim Crutchfield	202-690-0135	james.crutchfield@usda.gov
GIS Mapping/Imagery Analyst	Lisa Colson	202-720-6652	lisa.colson@usda.gov
WAP Coordinators	Shannon Moyo		shannon.moyo@usda.gov
	Vacant		

COUNTRY- AND REGION-SPECIFIC INFORMATION

South America, Argentina, Venezuela, and Colombia	Katie McGaughey	202-720-9210	katie.mcgaughey@usda.gov
Western and Central Europe, and North Africa	Bryan Purcell	202-690-0138	bryan.purcell@usda.gov
Russia, Ukraine, Kazakhstan, Moldova, and Belarus	Iliana Mladenova, Ph.D.	202-690-2315	iliana.mladenova@usda.gov
South Asia, Sri Lanka Bangladesh, India, and Nepal	Arnella Trent	202-720-0881	arnella.trent@usda.gov
East Asia, China, and Japan	Dath Mita, Ph.D.	202-720-7339	dath.mita@usda.gov
Sub-Saharan Africa, Nigeria and South Africa	Curt Reynolds, Ph.D.	202-690-0134	curt.reynolds@usda.gov
S.E. Asia, Indonesia, Thailand, Malaysia, Cambodia and Vietnam	Justin Jenkins	202-720-0419	justin.jenkins@usda.gov
Mexico and Central America	Lisa Colson	202-720-6652	lisa.colson@usda.gov
Australia, New Zealand, Pakistan Papua New Guinea and South Pacific Islands	Jim Crutchfield	202-690-0135	james.crutchfield@usda.gov
Middle East, Central Asia, Afghanistan Iraq, Iran, and Syria	Aaron Mulhollen	202-690-0131	aaron.mulhollen@usda.gov
Canada and the Caribbean	Shannon Moyo		shannon.moyo@usda.gov
Brazil	Curt Reynolds, Ph.D.	202-690-0134	curt.reynolds@usda.gov



The Foreign Agricultural Service (FAS) updates its production, supply and distribution (PSD) database for cotton, oilseeds, and grains at 12:00 p.m. on the day the *World Agricultural Supply and Demand Estimates* (WASDE) report is released. This circular is released by 12:15 p.m.

FAS Reports and Databases:

World Agricultural Production

Current: <https://www.fas.usda.gov/data/world-agricultural-production>

Archive: <https://usda.library.cornell.edu/concern/publications/5q47rn72z?locale=en>

USDA's Foreign Agricultural Service (FAS) publishes a monthly report on crop acreage, yield and production in major countries worldwide. Sources include reporting from FAS's worldwide offices, official statistics of foreign governments, and analysis of economic data and satellite imagery. The reports reflect official USDA estimates released in the monthly *World Agricultural Supply and Demand Estimates* (WASDE).

World Markets and Trade

Current: <https://www.fas.usda.gov/data>

Archive:

https://usda.library.cornell.edu/catalog?f%5Bmember_of_collections_ssim%5D%5B%5D=Foreign+Agricultural+Service&locale=en

USDA's Foreign Agricultural Service (FAS) publishes monthly and quarterly reports which include data on U.S. and global trade, production, consumption and stocks, as well as analysis of developments affecting world trade in oilseeds, grains, cotton, livestock and poultry. The reports reflect official USDA estimates released in the monthly *World Agricultural Supply and Demand Estimates* (WASDE).

Global Agricultural Information Network (GAIN)

<https://gain.fas.usda.gov/>

USDA's Foreign Agricultural Service (FAS) provides timely reports on foreign markets through the Global Agriculture Information Network (GAIN) database. An average of 2,000 reports are added each year, with reports going back to 1995. GAIN reports are compiled by FAS' global market intelligence network, which includes FAS foreign service officers and locally engaged staff in over 90 overseas offices world-wide. They provide on-the-ground intelligence, insight, and analysis on nearly 200 countries, delivering information on foreign agricultural markets, crop conditions, and agro-political dynamics of interest to U.S. agriculture. GAIN reports contain assessments of commodity and trade issues made by USDA staff and are not necessarily statements of official U.S. government policy.

Production, Supply and Distribution (PS&D) Online

<https://apps.fas.usda.gov/psdonline/app/index.html#/app/home>

PSD Online is the public repository for USDA's Official Production, Supply and Distribution forecast data and reports for key agricultural commodities. PSD Online data are reviewed and updated monthly by an interagency committee chaired by USDA's World Agricultural Outlook Board (WAOB). The committee consist of representatives from Foreign Agricultural Service (FAS), the Economic Research Service (ERS), the Farm Service Agency (FSA), and the Agricultural Marketing Service (AMS).

EU Countries and Russia Wheat: Area and Production Estimates

<https://apps.fas.usda.gov/psdonline/app/index.html#/app/downloads> (click on PSD Datasets)

USDA's Foreign Agricultural Service (FAS) provides country-level area and production estimates for the nations of the European Union. For Russia, country-level area and production estimates are provided for Winter and Spring wheat. These datasets are reviewed and updated monthly by an interagency committee chaired by USDA's World Agricultural Outlook Board (WAOB) and can be downloaded through PSD datasets on PSD Online.



FAS Reports and Databases:

International Production Assessment (IPAD)

<https://ipad.fas.usda.gov/>

USDA's Foreign Agricultural Service (FAS) maintains a dynamic global crop production portal with key information including *World Agricultural Production* (WAP) briefs, Commodity Intelligence Reports (CIR), geospatial applications, crop production maps at a subnational level and crop calendars for the top-20 producing countries. Additionally, Crop Explorer (<https://ipad.fas.usda.gov/cropexplorer/>) displays rainfall, temperature, evapotranspiration, soil moisture, snow cover, and vegetation conditions in charts and maps.

USDA and NASA Global Agricultural Monitoring (GLAM)

<https://glam1.gsfc.nasa.gov/>

The USDA and NASA Global Agricultural Monitoring (GLAM) system provides near real-time and science quality Moderate Resolution Imaging Spectroradiometer (MODIS) Normalized Difference Vegetation Index (NDVI) from the satellites Terra and Aqua. The public can view and retrieve MODIS 8-day composited, global NDVI satellite imagery and time series data. GLAM was developed by NASA's Global Inventory Modeling and Mapping Studies (GIMMS) group for USDA's Foreign Agricultural Service.

Global Agricultural and Disaster Assessment System (GADAS)

<https://geo.fas.usda.gov/GADAS/index.html>

USDA's Foreign Agricultural Service (FAS) provides the Global Agricultural and Disaster Assessment System (GADAS), a web-based Geographic Information System (GIS) tool which integrates a vast array of highly detailed earth observation data streams, particularly targeted towards agricultural and disaster assessment analysis. GADAS is an interactive website which provides analysts with a wide variety of routine geospatial products (maps, charts, tables) they require for comprehensive situational investigations and recurring assessments.

Export Sales Reporting

<https://apps.fas.usda.gov/esrquery/>

USDA's Export Sales Reporting Program monitors U.S. agricultural export sales on a daily and weekly basis. Export sales reporting provides a constant stream of up-to-date market information for 40 U.S. agricultural commodities sold abroad. The weekly U.S. Export Sales report is the most currently available source of U.S. exports sales data. The data is used to analyze overall levels of export demand, determine where markets exit, and assess the relative position of U.S. commodities in foreign markets.

Global Agricultural Trade System (GATS)

<https://apps.fas.usda.gov/gats/default.aspx>

The Global Agricultural Trade System (GATS) is a searchable database containing monthly U.S. Census Bureau trade data organized by agricultural commodity and agricultural related product groups. Trade data is searchable by partner countries and partner groups. Historical U.S. agricultural trade data is available back to 1967. In addition, U.N. trade statistics (UN Comtrade) may be queried through GATS. UN trade data is available for nearly 200 countries or areas, dating from the inception of the Harmonized System (HS) of trade codes in 1989 to present. The database is continuously updated. U.S. trade data is updated monthly according to the U.S. Census Bureau's reporting system. UN Comtrade data are updated in GATS after nationally submitted data to the UN are standardized by the UN Statistical Division and added to the UN Comtrade database.

Other USDA Reports:

World Agricultural Supply and Demand Estimates (WASDE):

<http://www.usda.gov/oce/commodity/wasde/>

Economic Research Service:

<http://www.ers.usda.gov/topics/crops>

National Agricultural Statistics Service:

<http://www.nass.usda.gov/Publications/>

Table 01 World Crop Production Summary

Million Metric Tons

Commodity	World -	Total Foreign	North America			Former Soviet		European	Asia (WAP)					South America		Selected Other			All Others
			United States	Canada -	Mexico -	Russia -	Ukraine -		China -	India -	Indonesia	Pakistan	Thailand	Argentina	Brazil -	Australia	South Africa	Turkey -	
---Million metric tons---																			
Wheat																			
2022/23	789.2	744.3	44.9	34.3	3.6	92.0	21.5	nr	137.7	104.0	0.0	26.4	0.0	12.6	10.6	40.5	2.1	17.3	241.8
2023/24 prel.	787.7	738.4	49.3	32.0	3.1	91.5	23.0	nr	136.6	110.6	0.0	28.2	0.0	15.9	8.1	26.0	2.1	20.0	241.4
2024/25 proj.																			
May	798.2	747.6	50.6	34.0	3.4	88.0	21.0	nr	140.0	114.0	0.0	30.0	0.0	17.0	9.5	29.0	2.1	19.0	240.6
Coarse Grains																			
2022/23	1,449.7	1,093.3	356.4	30.5	33.9	44.1	33.9	nr	285.7	56.8	12.4	9.9	5.3	42.8	143.5	18.8	17.5	14.8	343.3
2023/24 prel.	1,502.1	1,099.2	402.9	27.2	28.4	42.5	38.3	nr	297.1	56.0	12.7	11.0	5.4	61.3	128.1	14.3	14.5	17.0	345.3
2024/25 proj.																			
May	1,512.6	1,120.8	391.8	28.7	30.4	41.5	33.0	nr	300.3	56.7	13.2	10.0	5.5	60.0	133.8	14.9	17.5	15.1	360.5
Rice, Milled																			
2022/23	515.8	510.7	5.1	0.0	0.1	0.6	0.0	nr	145.9	135.8	33.9	7.3	20.9	0.8	6.8	0.4	0.0	0.6	157.6
2023/24 prel.	517.3	510.4	6.9	0.0	0.2	0.7	0.0	nr	144.6	134.0	33.0	9.0	20.0	0.9	7.2	0.4	0.0	0.5	159.9
2024/25 proj.																			
May	527.6	520.6	7.0	0.0	0.2	0.7	0.0	nr	146.0	138.0	34.0	9.5	20.1	0.9	7.5	0.5	0.0	0.6	162.7
Total Grains																			
2022/23	2,754.7	2,348.3	406.4	64.9	37.6	136.7	55.4	nr	569.4	296.5	46.3	43.6	26.2	56.1	160.9	59.8	19.6	32.7	742.6
2023/24 prel.	2,807.2	2,348.1	459.1	59.1	31.7	134.7	61.3	nr	578.4	300.6	45.7	48.2	25.4	78.0	143.5	40.7	16.6	37.6	746.6
2024/25 proj.																			
May	2,838.4	2,389.1	449.3	62.7	33.9	130.2	54.0	nr	586.3	308.7	47.2	49.5	25.6	77.9	150.8	44.3	19.6	34.6	763.8
Oilseeds																			
2022/23	637.7	512.0	125.8	25.3	0.9	26.6	19.8	nr	67.9	42.4	15.0	2.7	1.0	31.5	167.0	9.8	3.8	4.0	94.3
2023/24 prel.	658.1	535.9	122.2	25.9	0.6	28.1	24.1	nr	67.3	43.1	15.1	3.7	1.0	56.1	160.0	7.0	2.8	3.1	97.9
2024/25 proj.																			
May	687.1	555.9	131.2	26.4	0.6	28.1	23.9	nr	67.5	43.1	15.1	3.5	1.0	56.8	175.7	7.8	3.9	3.5	99.1
Cotton																			
2022/23	116.3	101.8	14.5	0.0	1.6	0.0	0.0	1.6	30.7	26.3	0.0	3.9	0.0	1.2	11.7	5.8	0.1	4.9	14.1
2023/24 prel.	113.6	101.5	12.1	0.0	0.9	0.0	0.0	1.1	27.5	26.0	0.0	6.7	0.0	1.6	14.6	5.0	0.1	3.2	14.9
2024/25 proj.																			
May	119.0	103.0	16.0	0.0	0.8	0.0	0.0	1.4	27.0	25.0	0.0	6.5	0.0	1.6	16.7	5.0	0.1	4.0	15.1

1/ Includes wheat, coarse grains, and rice (milled) shown above.

Table 02 Wheat Area, Yield, and Production

Country / Region	Area (Million hectares)			Yield (Metric tons per hectare)			Production (Million metric tons)			Change in Production			
	2022/23	Prel. 2023/24	2024/25 Proj. May	2022/23	Prel. 2023/24	2024/25 Proj. May	2022/23	Prel. 2023/24	2024/25 Proj. May	From last month		From last year	
										MMT	Percent	MMT	Percent
World	219.59	222.76	222.60	3.59	3.54	3.59	789.19	787.72	798.19			10.47	1.33
United States	14.36	15.08	15.37	3.13	3.27	3.29	44.90	49.31	50.56			1.24	2.52
Total Foreign	205.23	207.68	207.23	3.63	3.56	3.61	744.30	738.40	747.63			9.23	1.25
European Union	24.40	24.20	23.40	5.50	5.54	5.64	134.29	134.15	132.00			-2.15	-1.60
United Kingdom	1.81	1.72	1.40	8.57	8.13	8.00	15.54	13.98	11.20			-2.78	-19.89
Serbia	0.62	0.73	0.63	5.32	4.69	4.80	3.30	3.40	3.00			-0.40	-11.76
China	23.52	23.63	23.70	5.86	5.78	5.91	137.72	136.59	140.00			3.41	2.50
South Asia													
India	30.46	31.40	32.00	3.41	3.52	3.56	104.00	110.55	114.00			3.45	3.12
Pakistan	9.00	9.04	9.60	2.93	3.12	3.13	26.40	28.18	30.00			1.82	6.47
Afghanistan	1.86	2.35	2.30	2.05	2.20	2.26	3.80	5.17	5.20			0.03	0.58
Nepal	0.72	0.72	0.72	2.98	2.90	2.90	2.15	2.09	2.09			0.00	0.00
Former Soviet Union - 12													
Russia	29.00	28.83	28.50	3.17	3.17	3.09	92.00	91.50	88.00			-3.50	-3.83
Russia Winter	16.30	15.27	16.00	4.17	4.19	4.00	68.00	64.00	64.00			0.00	0.00
Russia Spring	12.70	13.56	12.50	1.89	2.03	1.92	24.00	27.50	24.00			-3.50	-12.73
Ukraine	5.60	5.01	4.70	3.84	4.59	4.47	21.50	23.00	21.00			-2.00	-8.70
Kazakhstan	12.81	13.13	13.20	1.28	0.92	1.10	16.40	12.11	14.50			2.39	19.73
Uzbekistan	1.26	1.40	1.30	4.99	4.62	5.15	6.27	6.46	6.70			0.24	3.68
Belarus	0.68	0.68	0.69	3.48	3.38	3.80	2.35	2.30	2.60			0.30	13.04
Canada	10.08	10.68	10.70	3.41	2.99	3.18	34.34	31.95	34.00			2.05	6.40
South America													
Argentina	5.50	5.61	5.50	2.28	2.84	3.09	12.55	15.91	17.00			1.09	6.85
Brazil	3.09	3.47	3.50	3.42	2.33	2.71	10.55	8.10	9.50			1.40	17.28
Australia	13.05	12.50	12.50	3.11	2.08	2.32	40.55	26.00	29.00			3.00	11.54
Africa													
Egypt	1.45	1.35	1.40	6.55	6.57	6.57	9.50	8.87	9.20			0.33	3.72
Morocco	2.44	2.50	2.20	1.11	1.66	1.14	2.71	4.16	2.50			-1.66	-39.90
Algeria	1.80	1.80	1.80	2.00	1.50	1.67	3.60	2.70	3.00			0.30	11.11
Ethiopia	1.90	1.86	1.90	3.05	3.01	3.00	5.80	5.60	5.70			0.10	1.79
Middle East													
Turkey	6.80	7.20	7.25	2.54	2.78	2.62	17.25	20.00	19.00			-1.00	-5.00
Iran	6.20	6.20	6.20	2.13	2.26	2.34	13.20	14.00	14.50			0.50	3.57
Iraq	2.10	2.60	2.70	1.52	2.00	2.11	3.20	5.20	5.70			0.50	9.62
Syria	1.18	1.20	1.30	1.31	2.00	2.15	1.55	2.40	2.80			0.40	16.67
Mexico	0.59	0.50	0.56	6.07	6.20	6.07	3.57	3.10	3.40			0.30	9.68
Others	7.33	7.37	7.59	2.76	2.84	2.90	20.20	20.93	22.04			1.11	5.31

Table 03 Total Coarse Grain Area, Yield, and Production

Country / Region	Area (Million hectares)			Yield (Metric tons per hectare)			Production (Million metric tons)			Change in Production			
	2022/23	Prel.	2024/25 Proj.	2022/23	Prel.	2024/25 Proj.	2022/23	Prel.	2024/25 Proj.	From last month		From last year	
		2023/24	May		2023/24	May		2023/24	May	MMT	Percent	MMT	Percent
World	336.48	336.89	336.75	4.31	4.46	4.49	1,449.72	1,502.13	1,512.62			10.49	0.70
United States	35.18	38.99	36.75	10.13	10.33	10.66	356.45	402.89	391.77			-11.12	-2.76
Total Foreign	301.30	297.91	300.01	3.63	3.69	3.74	1,093.27	1,099.24	1,120.85			21.61	1.97
China	45.55	46.65	47.14	6.27	6.37	6.37	285.70	297.14	300.30			3.16	1.06
European Union	26.58	25.97	26.66	5.00	5.24	5.56	132.96	135.96	148.19			12.23	8.99
United Kingdom	1.37	1.38	1.47	6.33	5.87	5.92	8.67	8.08	8.73			0.65	8.01
South America													
Brazil	24.45	23.70	24.56	5.87	5.41	5.45	143.49	128.15	133.76			5.61	4.38
Argentina	9.19	9.38	8.91	4.66	6.53	6.73	42.84	61.28	59.99			-1.29	-2.10
Former Soviet Union - 12													
Russia	13.60	12.88	13.28	3.25	3.30	3.13	44.13	42.54	41.53			-1.01	-2.37
Ukraine	6.32	6.04	5.62	5.37	6.34	5.87	33.93	38.28	32.97			-5.31	-13.87
Kazakhstan	2.63	2.87	2.96	1.79	1.40	1.50	4.71	4.01	4.43			0.42	10.58
Belarus	1.03	1.05	1.12	3.11	3.09	3.21	3.20	3.23	3.58			0.35	10.84
Africa													
Nigeria	13.50	13.40	13.10	1.61	1.42	1.53	21.70	19.01	20.10			1.09	5.72
South Africa	3.13	3.20	3.34	5.61	4.54	5.25	17.53	14.51	17.53			3.02	20.84
Tanzania	5.30	5.50	5.50	1.36	1.40	1.51	7.23	7.73	8.33			0.60	7.77
Burkina Faso	4.09	4.20	4.20	1.16	1.10	1.13	4.73	4.63	4.75			0.12	2.64
Ethiopia	5.45	5.41	5.64	3.21	3.25	3.18	17.47	17.56	17.91			0.35	1.99
Egypt	1.10	1.12	1.14	7.52	7.19	7.43	8.28	8.07	8.48			0.41	5.08
Mali	5.20	4.80	4.90	1.38	1.43	1.43	7.15	6.86	7.00			0.14	2.07
India	23.90	25.23	24.52	2.38	2.22	2.31	56.78	56.01	56.65			0.64	1.14
Southeast Asia													
Indonesia	3.50	3.70	3.80	3.54	3.43	3.47	12.40	12.70	13.20			0.50	3.94
Philippines	2.54	2.60	2.60	3.28	3.27	3.27	8.32	8.50	8.50			0.00	0.00
Vietnam	0.89	0.87	0.85	4.99	5.00	5.06	4.42	4.35	4.30			-0.05	-1.15
Thailand	1.21	1.25	1.26	4.35	4.29	4.34	5.25	5.35	5.45			0.10	1.87
Mexico	8.64	7.65	8.05	3.92	3.72	3.77	33.88	28.42	30.36			1.95	6.84
Canada	5.74	5.24	5.30	5.32	5.19	5.42	30.54	27.16	28.68			1.51	5.57
Australia	5.69	5.63	5.86	3.31	2.55	2.54	18.84	14.34	14.87			0.53	3.66
Middle East													
Turkey	4.57	4.59	4.55	3.25	3.72	3.31	14.84	17.05	15.06			-1.99	-11.65
Iran	1.86	1.86	1.81	2.38	2.38	2.50	4.42	4.42	4.52			0.10	2.26
Others	74.30	71.76	71.90	1.61	1.73	1.69	119.88	123.91	121.69			-2.23	-1.80

World and Selected Countries and Regions; Coarse Grain includes: Barley, Corn, Millet, Mixed Grains, Oats, Rye and Sorghum

Table 04 Corn Area, Yield, and Production

Country / Region	Area (Million hectares)			Yield (Metric tons per hectare)			Production (Million metric tons)			Change in Production			
	2022/23	Prel. 2023/24	2024/25 Proj. May	2022/23	Prel. 2023/24	2024/25 Proj. May	2022/23	Prel. 2023/24	2024/25 Proj. May	From last month MMT Percent		From last year MMT Percent	
World	200.87	203.25	201.17	5.76	6.04	6.06	1,157.88	1,228.09	1,219.93			-8.16	-0.66
United States	31.85	35.01	33.23	10.89	11.13	11.36	346.74	389.69	377.46			-12.23	-3.14
Total Foreign	169.02	168.23	167.94	4.80	4.98	5.02	811.14	838.40	842.47			4.07	0.49
China	43.07	44.22	44.70	6.44	6.53	6.53	277.20	288.84	292.00			3.16	1.09
South America													
Brazil	22.40	21.50	22.30	6.12	5.67	5.70	137.00	122.00	127.00			5.00	4.10
Argentina	6.75	7.00	6.40	5.33	7.57	7.97	36.00	53.00	51.00			-2.00	-3.77
Bolivia	0.44	0.43	0.42	2.52	2.62	2.56	1.10	1.13	1.08			-0.05	-4.44
European Union	8.85	8.28	8.65	5.91	7.37	7.49	52.29	61.00	64.80			3.80	6.23
Africa													
South Africa	2.95	3.00	3.15	5.81	4.67	5.40	17.10	14.00	17.00			3.00	21.43
Nigeria	5.80	5.70	5.10	2.23	1.94	2.16	12.95	11.05	11.00			-0.05	-0.48
Ethiopia	2.55	2.50	2.55	4.00	4.00	4.00	10.20	10.00	10.20			0.20	2.00
Egypt	0.93	0.95	0.97	8.00	7.58	7.84	7.44	7.20	7.60			0.40	5.56
Tanzania	4.00	4.20	4.20	1.48	1.52	1.67	5.90	6.40	7.00			0.60	9.38
Malawi	1.82	1.79	1.50	2.05	1.96	1.33	3.72	3.51	2.00			-1.51	-43.02
Zambia	1.37	1.42	0.60	1.94	2.30	1.67	2.65	3.26	1.00			-2.26	-69.35
Kenya	2.16	2.00	2.00	1.43	1.85	1.85	3.09	3.70	3.70			0.00	0.00
Uganda	1.10	1.10	1.10	2.55	2.55	2.55	2.80	2.80	2.80			0.00	0.00
Zimbabwe	1.00	1.00	0.90	1.45	1.50	0.61	1.45	1.50	0.55			-0.95	-63.33
Former Soviet Union - 12													
Ukraine	4.05	4.00	3.80	6.67	7.75	7.11	27.00	31.00	27.00			-4.00	-12.90
Russia	2.64	2.40	2.60	6.00	6.92	6.15	15.83	16.60	16.00			-0.60	-3.61
South Asia													
India	10.74	11.00	11.00	3.54	3.41	3.41	38.09	37.50	37.50			0.00	0.00
Pakistan	1.60	1.65	1.50	5.83	6.36	6.33	9.33	10.50	9.50			-1.00	-9.52
Nepal	0.97	0.97	0.97	2.82	2.82	2.82	2.72	2.72	2.72			0.00	0.00
Southeast Asia													
Indonesia	3.50	3.70	3.80	3.54	3.43	3.47	12.40	12.70	13.20			0.50	3.94
Philippines	2.54	2.60	2.60	3.28	3.27	3.27	8.32	8.50	8.50			0.00	0.00
Vietnam	0.89	0.87	0.85	4.99	5.00	5.06	4.42	4.35	4.30			-0.05	-1.15
Thailand	1.18	1.22	1.23	4.41	4.34	4.39	5.20	5.30	5.40			0.10	1.89
Mexico	6.89	6.10	6.40	4.07	3.82	3.91	28.08	23.30	25.00			1.70	7.30
Canada	1.44	1.52	1.50	10.07	9.92	10.00	14.54	15.08	15.00			-0.08	-0.50
Turkey	0.53	0.65	0.56	12.83	12.92	13.04	6.80	8.40	7.30			-1.10	-13.10
Others	26.88	26.47	26.60	2.51	2.76	2.72	67.52	73.06	72.33			-0.73	-1.00

World and Selected Countries and Regions

Table 05 Barley Area, Yield, and Production

Country / Region	Area (Million hectares)			Yield (Metric tons per hectare)			Production (Million metric tons)			Change in Production			
	2022/23	Prel. 2023/24	2024/25 Proj. May	2022/23	Prel. 2023/24	2024/25 Proj. May	2022/23	Prel. 2023/24	2024/25 Proj. May	From last month		From last year	
										MMT	Percent	MMT	Percent
World	47.11	46.76	47.52	3.20	3.04	3.15	150.77	142.11	149.91			7.80	5.49
United States	0.98	1.03	0.85	3.86	3.90	4.12	3.79	4.03	3.51			-0.52	-13.01
Total Foreign	46.12	45.73	46.67	3.19	3.02	3.14	146.98	138.08	146.41			8.32	6.03
European Union	10.31	10.30	10.50	5.02	4.63	5.19	51.80	47.70	54.50			6.80	14.26
United Kingdom	1.12	1.14	1.20	6.62	6.12	6.25	7.39	6.96	7.50			0.54	7.71
Former Soviet Union - 12													
Russia	7.75	7.65	7.50	2.77	2.68	2.60	21.50	20.50	19.50			-1.00	-4.88
Ukraine	1.95	1.68	1.50	3.13	3.78	3.47	6.10	6.35	5.20			-1.15	-18.11
Kazakhstan	2.18	2.43	2.50	1.51	1.08	1.24	3.29	2.61	3.10			0.49	18.59
Belarus	0.40	0.40	0.40	2.75	2.75	3.00	1.10	1.10	1.20			0.10	9.09
Azerbaijan	0.39	0.36	0.36	2.85	2.99	3.06	1.10	1.07	1.10			0.03	3.09
Canada	2.64	2.70	2.60	3.79	3.30	3.69	9.99	8.90	9.60			0.70	7.91
Australia	4.13	4.20	4.40	3.43	2.57	2.48	14.14	10.80	10.90			0.10	0.93
Middle East													
Turkey	3.80	3.70	3.75	1.95	2.16	1.89	7.40	8.00	7.10			-0.90	-11.25
Iran	1.65	1.65	1.60	1.82	1.82	1.94	3.00	3.00	3.10			0.10	3.33
Iraq	0.21	0.16	1.00	1.12	1.29	1.40	0.24	0.20	1.40			1.20	600.00
Syria	1.12	1.10	1.10	0.16	0.45	1.09	0.18	0.50	1.20			0.70	140.00
Africa													
Ethiopia	0.98	0.98	0.98	2.22	2.50	2.54	2.18	2.45	2.49			0.04	1.43
Morocco	1.14	1.17	0.80	0.61	1.15	0.63	0.70	1.35	0.50			-0.85	-62.96
Algeria	1.03	1.03	1.03	1.37	1.00	1.17	1.40	1.03	1.20			0.18	17.07
Tunisia	0.30	0.11	0.35	1.53	0.82	1.57	0.46	0.09	0.55			0.46	517.98
South Africa	0.10	0.11	0.11	2.99	3.48	3.36	0.30	0.38	0.37			-0.01	-1.60
South America													
Argentina	1.58	1.40	1.40	2.93	3.57	3.71	4.62	5.00	5.20			0.20	4.00
Uruguay	0.21	0.18	0.19	4.25	3.89	4.21	0.90	0.70	0.80			0.10	14.29
Brazil	0.13	0.14	0.14	3.89	2.90	4.07	0.50	0.39	0.55			0.16	40.66
India	0.45	0.63	0.72	3.03	3.05	2.99	1.37	1.91	2.15			0.24	12.39
China	0.56	0.50	0.50	3.91	4.00	4.00	2.19	2.00	2.00			0.00	0.00
Mexico	0.30	0.29	0.29	2.69	2.69	2.69	0.80	0.78	0.78			0.00	0.00
Afghanistan	0.06	0.08	0.07	1.53	1.38	1.43	0.10	0.11	0.10			-0.01	-9.09
Others	1.67	1.67	1.69	2.56	2.52	2.56	4.26	4.21	4.32			0.11	2.69

World and Selected Countries and Regions

Table 06 Oats Area, Yield, and Production

Country / Region	Area (Million hectares)			Yield (Metric tons per hectare)			Production (Million metric tons)			Change in Production			
	2022/23	Prel. 2023/24	2024/25 Proj. May	2022/23	Prel. 2023/24	2024/25 Proj. May	2022/23	Prel. 2023/24	2024/25 Proj. May	From last month MMT	Percent	From last year MMT	Percent
World	9.36	8.35	8.86	2.70	2.30	2.51	25.32	19.23	22.25			3.02	15.70
United States	0.36	0.34	0.28	2.35	2.46	2.41	0.84	0.83	0.68			-0.15	-17.63
Total Foreign	9.01	8.02	8.57	2.72	2.30	2.52	24.48	18.40	21.57			3.17	17.20
European Union	2.35	2.29	2.35	3.19	2.59	3.02	7.49	5.92	7.10			1.18	19.93
Former Soviet Union - 12													
Russia	2.13	1.77	2.00	2.11	1.86	1.90	4.50	3.30	3.80			0.50	15.15
Ukraine	0.15	0.17	0.15	2.47	2.53	2.33	0.38	0.43	0.35			-0.08	-18.60
Belarus	0.16	0.16	0.16	2.42	2.26	2.06	0.38	0.35	0.32			-0.03	-8.57
Kazakhstan	0.20	0.19	0.21	1.16	0.79	1.00	0.23	0.15	0.21			0.06	40.00
Canada	1.40	0.82	1.00	3.73	3.20	3.50	5.23	2.64	3.50			0.86	32.78
South America													
Argentina	0.26	0.29	0.30	1.67	2.14	2.00	0.43	0.61	0.60			-0.01	-1.64
Brazil	0.50	0.52	0.52	2.39	1.89	2.33	1.19	0.98	1.20			0.22	21.95
Chile	0.07	0.09	0.10	4.38	4.71	4.70	0.32	0.40	0.47			0.07	17.50
Uruguay	0.02	0.01	0.02	2.40	2.20	2.00	0.04	0.02	0.03			0.01	36.36
Oceania													
Australia	0.75	0.70	0.73	2.13	1.57	1.79	1.59	1.10	1.30			0.20	18.18
New Zealand	0.01	0.00	0.00	6.60	6.50	6.25	0.03	0.03	0.03			0.00	-3.85
China	0.41	0.41	0.41	1.48	1.48	1.48	0.60	0.60	0.60			0.00	0.00
Africa													
Algeria	0.08	0.08	0.08	1.31	1.31	1.31	0.11	0.11	0.11			0.00	0.00
Morocco	0.01	0.02	0.02	0.31	0.40	0.40	0.00	0.01	0.01			0.00	0.00
South Africa	0.03	0.03	0.02	1.04	1.43	1.50	0.03	0.04	0.03			-0.01	-25.00
Other Europe													
United Kingdom	0.18	0.17	0.20	5.72	4.97	5.00	1.01	0.83	1.00			0.17	20.48
Norway	0.06	0.07	0.07	4.62	4.29	4.29	0.29	0.30	0.30			0.00	0.00
Serbia	0.02	0.02	0.02	2.80	3.00	3.00	0.04	0.06	0.06			0.00	0.00
Albania	0.02	0.02	0.02	2.27	2.27	2.27	0.03	0.03	0.03			0.00	0.00
Bosnia and Herzegovina	0.01	0.01	0.01	4.00	3.43	3.43	0.04	0.02	0.02			0.00	0.00
Turkey	0.14	0.13	0.13	2.64	2.60	2.62	0.37	0.33	0.34			0.02	4.62
Mexico	0.05	0.03	0.04	2.22	2.20	2.00	0.11	0.06	0.08			0.03	45.45
Others	0.03	0.06	0.05	1.63	1.68	1.78	0.05	0.09	0.08			-0.01	-12.77

World and Selected Countries and Regions

Table 07 Rye Area, Yield, and Production

Country / Region	Area (Million hectares)			Yield (Metric tons per hectare)			Production (Million metric tons)			Change in Production			
	2022/23	Prel.	2024/25 Proj.	2022/23	Prel.	2024/25 Proj.	2022/23	Prel.	2024/25 Proj.	From last month		From last year	
		2023/24	May		2023/24	May		2023/24	May	MMT	Percent	MMT	Percent
World	3.68	3.61	3.68	3.30	3.23	3.23	12.13	11.66	11.88			0.22	1.87
United States	0.14	0.13	0.12	2.26	2.03	2.21	0.32	0.26	0.27			0.00	1.14
Total Foreign	3.54	3.48	3.56	3.34	3.28	3.26	11.81	11.39	11.61			0.22	1.89
European Union	1.76	1.86	1.80	4.27	4.10	4.28	7.53	7.63	7.70			0.07	0.86
Former Soviet Union - 12													
Russia	0.88	0.79	0.90	2.27	2.15	2.06	2.00	1.70	1.85			0.15	8.82
Belarus	0.30	0.31	0.32	2.50	2.52	2.38	0.75	0.78	0.76			-0.02	-2.56
Ukraine	0.10	0.08	0.08	3.15	3.00	2.88	0.32	0.24	0.23			-0.01	-4.17
Kazakhstan	0.03	0.02	0.03	1.76	0.86	1.17	0.06	0.02	0.04			0.02	94.44
Turkey	0.10	0.11	0.11	2.79	2.91	2.91	0.27	0.32	0.32			0.00	0.00
Canada	0.15	0.12	0.12	3.42	3.09	3.17	0.52	0.36	0.37			0.01	1.96
South America													
Chile	0.00	0.00	0.00	5.00	0.00	0.00	0.01	0.00	0.00			0.00	100.00
Argentina	0.11	0.09	0.11	1.66	1.83	1.76	0.18	0.17	0.19			0.02	12.12
Other Europe													
Bosnia and Herzegovina	0.00	0.00	0.00	3.00	3.00	3.00	0.01	0.01	0.01			0.00	-33.33
Switzerland	0.00	0.00	0.00	5.00	5.00	5.00	0.01	0.01	0.01			0.00	0.00
Serbia	0.01	0.01	0.01	3.00	3.33	3.00	0.02	0.02	0.02			0.00	-10.00
Australia	0.05	0.05	0.05	0.71	0.71	0.71	0.03	0.03	0.03			0.00	0.00
Others	0.05	0.04	0.04	2.47	2.43	2.20	0.12	0.11	0.10			-0.01	-9.35

World and Selected Countries and Regions

Table 08 Sorghum Area, Yield, and Production

Country / Region	Area (Million hectares)			Yield (Metric tons per hectare)			Production (Million metric tons)			Change in Production			
	2022/23	Prel. 2023/24	2024/25 Proj. May	2022/23	Prel. 2023/24	2024/25 Proj. May	2022/23	Prel. 2023/24	2024/25 Proj. May	From last month		From last year	
										MMT	Percent	MMT	Percent
World	40.64	40.16	41.83	1.42	1.44	1.52	57.61	58.02	63.64			5.62	9.69
United States	1.85	2.48	2.27	2.58	3.26	4.35	4.77	8.07	9.86			1.79	22.12
Total Foreign	38.79	37.68	39.57	1.36	1.33	1.36	52.84	49.95	53.79			3.84	7.68
Africa													
Nigeria	5.70	5.70	6.10	1.19	1.12	1.18	6.81	6.40	7.20			0.80	12.50
Ethiopia	1.55	1.48	1.65	2.67	2.71	2.48	4.14	4.01	4.10			0.09	2.24
Sudan	7.24	5.99	7.50	0.72	0.51	0.67	5.25	3.06	5.00			1.95	63.67
Burkina Faso	1.96	1.90	1.90	1.03	0.93	1.00	2.01	1.77	1.90			0.13	7.22
Mali	1.64	1.50	1.50	0.97	1.02	1.00	1.58	1.53	1.50			-0.03	-1.83
Niger	3.79	3.70	3.70	0.55	0.46	0.51	2.10	1.70	1.90			0.20	11.76
Cameroon	0.74	0.74	0.74	1.62	1.62	1.62	1.20	1.20	1.20			0.00	0.00
Tanzania	1.00	1.00	1.00	1.00	1.00	1.00	1.00	1.00	1.00			0.00	0.00
Egypt	0.15	0.15	0.15	5.00	5.20	5.27	0.75	0.78	0.79			0.01	1.28
Uganda	0.25	0.25	0.25	0.90	0.90	0.90	0.23	0.23	0.23			0.00	0.00
Ghana	0.31	0.31	0.31	1.29	1.42	1.29	0.40	0.44	0.40			-0.04	-8.88
Mozambique	0.29	0.27	0.28	0.51	0.55	0.33	0.15	0.15	0.09			-0.06	-40.00
South Africa	0.03	0.04	0.04	2.76	2.25	3.25	0.09	0.09	0.13			0.04	44.44
Mexico	1.40	1.23	1.32	3.50	3.48	3.41	4.89	4.28	4.50			0.22	5.14
South America													
Argentina	0.50	0.60	0.70	3.22	4.17	4.29	1.61	2.50	3.00			0.50	20.00
Brazil	1.42	1.54	1.60	3.38	3.09	3.13	4.79	4.76	5.00			0.24	5.02
South Asia													
India	3.54	4.10	3.80	1.08	1.07	1.11	3.81	4.40	4.20			-0.20	-4.55
Pakistan	0.22	0.22	0.22	0.63	0.63	0.63	0.14	0.14	0.14			0.00	0.00
China	0.68	0.63	0.63	4.58	4.76	4.76	3.09	3.00	3.00			0.00	0.00
Australia	0.69	0.60	0.60	3.84	3.33	3.67	2.64	2.00	2.20			0.20	10.00
European Union	0.13	0.16	0.16	4.10	5.23	5.10	0.51	0.81	0.79			-0.02	-2.47
Others	5.59	5.58	5.43	1.01	1.02	1.02	5.64	5.72	5.53			-0.19	-3.32

World and Selected Countries and Regions

Table 09 Rice Area, Yield, and Production
World and Selected Countries and Regions

Country / Region	Area (Million hectares)			Yield (Metric tons per hectare)			Production (Million metric tons)			Change in Production			
	2022/23	Prel.	2024/25 Proj.	2022/23	Prel.	2024/25 Proj.	2022/23	Prel.	2024/25 Proj.	From last month		From last year	
		2023/24	May		2023/24	May		2023/24	May	MMT	Percent	MMT	Percent
World	165.46	166.13	167.55	4.66	4.65	4.70	515.78	517.34	527.61			10.26	1.98
United States	0.88	1.16	1.17	8.28	8.57	8.56	5.08	6.93	6.99			0.06	0.88
Total Foreign	164.58	164.97	166.39	4.64	4.62	4.68	510.70	510.41	520.61			10.20	2.00
East Asia													
China	29.45	28.95	29.00	7.08	7.14	7.19	145.95	144.62	146.00			1.38	0.95
Japan	1.50	1.46	1.44	6.86	6.84	6.87	7.48	7.27	7.20			-0.07	-0.99
Korea, South	0.73	0.71	0.69	6.87	6.92	6.86	3.76	3.70	3.60			-0.11	-2.89
Korea, North	0.54	0.54	0.54	3.87	4.18	4.18	1.36	1.47	1.47			0.00	0.00
South Asia													
India	47.83	48.00	48.50	4.26	4.19	4.27	135.76	134.00	138.00			4.00	2.99
Bangladesh	11.60	11.75	11.90	4.70	4.72	4.79	36.35	37.00	38.00			1.00	2.70
Pakistan	2.98	3.62	3.80	3.68	3.73	3.75	7.30	9.00	9.50			0.50	5.56
Nepal	1.45	1.45	1.45	3.79	3.66	3.72	3.65	3.53	3.60			0.07	1.98
Sri Lanka	1.15	1.16	1.15	3.63	4.22	4.48	2.84	3.33	3.50			0.17	5.04
Southeast Asia													
Indonesia	11.30	11.00	11.20	4.72	4.73	4.78	33.90	33.02	34.00			0.98	2.97
Vietnam	7.10	7.15	7.15	6.07	6.05	6.04	26.94	27.00	27.00			0.00	0.00
Thailand	11.07	10.65	10.70	2.86	2.85	2.85	20.91	20.00	20.10			0.10	0.50
Burma	6.80	6.86	6.80	2.71	2.72	2.78	11.80	11.95	12.10			0.15	1.26
Philippines	4.85	4.80	4.85	4.13	4.13	4.16	12.63	12.50	12.70			0.20	1.60
Cambodia	3.47	3.58	3.64	3.29	3.29	3.32	6.96	7.17	7.38			0.20	2.83
Laos	0.96	0.95	0.97	3.23	3.21	3.22	1.95	1.92	1.97			0.05	2.60
Malaysia	0.66	0.66	0.66	3.99	3.96	4.08	1.70	1.70	1.75			0.05	2.94
South America													
Brazil	1.48	1.55	1.60	6.78	6.89	6.89	6.82	7.24	7.50			0.26	3.56
Peru	0.42	0.43	0.43	8.34	8.52	8.60	2.40	2.50	2.55			0.05	2.00
Africa													
Egypt	0.60	0.63	0.60	8.70	8.70	8.70	3.60	3.78	3.60			-0.18	-4.76
Madagascar	1.60	1.60	1.60	2.87	2.75	2.75	2.93	2.82	2.82			0.00	0.00
Nigeria	3.50	3.50	3.50	2.43	2.43	2.49	5.36	5.36	5.48			0.13	2.35
European Union	0.33	0.36	0.40	6.11	6.05	6.78	1.29	1.38	1.72			0.34	24.35
Iran	0.57	0.57	0.57	5.32	5.30	5.32	2.00	2.00	2.00			0.01	0.25
Others	12.67	13.07	13.25	3.00	3.03	3.10	25.07	26.15	27.09			0.94	3.58

Yield is on a rough basis, before the milling process. Production is on a milled basis, after the milling process.

Table 10 Total Oilseed Area, Yield, and Production
World and Selected Countries and Regions

Country / Region	Area (Million hectares)			Yield (Metric tons per hectare)			Production (Million metric tons)			Change in Production			
	2022/23	Prel.	2024/25 Proj. May	2022/23	Prel.	2024/25 Proj. May	2022/23	Prel.	2024/25 Proj. May	From last month		From last year	
		2023/24			2023/24			2023/24		MMT	Percent	MMT	Percent
World Total	--	--	--	--	--	--	637.72	658.14	687.06			28.92	4.39
Total Foreign	--	--	--	--	--	--	511.97	535.90	555.90			20.00	3.73
Oilseed, Copra	--	--	--	--	--	--	6.00	6.21	5.81			-0.40	-6.50
Oilseed, Palm Kernel	--	--	--	--	--	--	20.07	20.71	20.74			0.03	0.14
Major Oilseeds	267.27	270.07	274.93	2.29	2.34	2.40	611.64	631.22	660.52			29.30	4.64
United States	39.91	38.03	40.28	3.15	3.21	3.26	125.75	122.24	131.16			8.92	7.29
Foreign Oilseeds	227.36	232.04	234.65	2.14	2.19	2.26	485.89	508.98	529.36			20.38	4.00
South America	71.19	74.39	76.58	3.01	3.15	3.28	214.52	234.43	251.01			16.58	7.07
Brazil	46.48	47.86	49.56	3.59	3.34	3.54	166.87	159.82	175.53			15.72	9.84
Argentina	17.76	19.48	19.70	1.77	2.88	2.88	31.45	56.10	56.76			0.65	1.17
Paraguay	3.74	3.71	3.87	2.75	2.89	2.83	10.27	10.72	10.94			0.23	2.12
Bolivia	1.81	1.84	1.86	2.39	2.16	2.17	4.31	3.98	4.04			0.06	1.51
Uruguay	1.28	1.37	1.46	1.00	2.52	2.31	1.28	3.45	3.37			-0.08	-2.21
China	25.95	26.14	26.15	2.62	2.58	2.58	67.92	67.32	67.48			0.16	0.24
South Asia	43.63	44.51	44.36	1.04	1.06	1.07	45.32	47.05	47.34			0.29	0.62
India	40.19	40.60	40.18	1.03	1.04	1.05	41.39	42.13	42.13			0.00	0.00
Pakistan	2.51	2.99	2.91	1.06	1.23	1.20	2.67	3.68	3.49			-0.20	-5.29
European Union	12.32	12.31	12.17	2.61	2.71	2.74	32.13	33.32	33.39			0.07	0.21
United Kingdom	0.37	0.39	0.28	3.73	3.11	3.21	1.36	1.22	0.90			-0.32	-25.99
Former Soviet Union - 12	27.85	28.66	29.64	1.87	2.02	1.96	52.07	57.95	57.97			0.02	0.03
Russia	14.74	14.85	15.50	1.80	1.89	1.81	26.55	28.10	28.10			0.00	0.00
Ukraine	8.75	9.50	9.75	2.26	2.54	2.45	19.80	24.10	23.90			-0.20	-0.83
Uzbekistan	1.07	1.05	1.02	1.24	1.15	1.18	1.33	1.21	1.21			0.00	0.00
Canada	10.75	11.16	10.93	2.36	2.32	2.41	25.32	25.87	26.37			0.50	1.93
Africa	24.35	24.35	24.13	1.05	0.98	1.06	25.59	23.77	25.65			1.88	7.91
Nigeria	4.87	4.87	5.07	1.15	1.15	1.13	5.61	5.60	5.75			0.15	2.68
South Africa	1.88	1.87	1.94	2.02	1.49	2.00	3.79	2.78	3.87			1.09	39.19
Tanzania	1.36	1.47	1.47	0.91	0.87	0.87	1.23	1.28	1.28			0.00	0.00
Southeast Asia	3.08	3.04	3.01	1.36	1.39	1.39	4.18	4.22	4.20			-0.02	-0.52
Burma	1.94	1.95	1.95	1.18	1.24	1.26	2.28	2.41	2.46			0.05	2.03
Indonesia	0.87	0.84	0.81	1.52	1.49	1.48	1.32	1.26	1.20			-0.06	-4.38
Australia	4.61	4.13	4.40	2.13	1.71	1.78	9.82	7.04	7.84			0.80	11.33
Turkey	1.47	1.27	1.30	2.71	2.43	2.68	3.98	3.09	3.49			0.40	13.00
Others	1.81	1.70	1.69	2.03	2.18	2.20	3.67	3.71	3.73			0.02	0.49

World Total and Total Foreign: (Major Oilseeds plus copra and palm kernel) Major Oilseeds: (soybeans, sunflowerseeds, peanuts(inshell), cottonseed and rapeseed)

Table 11 Soybean Area, Yield, and Production

Country / Region	Area (Million hectares)			Yield (Metric tons per hectare)			Production (Million metric tons)			Change in Production			
	2022/23	Prel. 2023/24	2024/25 Proj. May	2022/23	Prel. 2023/24	2024/25 Proj. May	2022/23	Prel. 2023/24	2024/25 Proj. May	From last month MMT	Percent	From last year MMT	Percent
World	136.86	139.42	143.39	2.76	2.85	2.94	378.20	396.95	422.26			25.32	6.38
United States	34.87	33.33	34.64	3.33	3.40	3.50	116.22	113.34	121.11			7.77	6.85
Total Foreign	101.99	106.09	108.75	2.57	2.67	2.77	261.98	283.60	301.15			17.55	6.19
South America													
Brazil	44.60	45.90	47.30	3.63	3.36	3.57	162.00	154.00	169.00			15.00	9.74
Argentina	14.40	16.50	16.90	1.74	3.03	3.02	25.00	50.00	51.00			1.00	2.00
Paraguay	3.60	3.56	3.70	2.79	2.95	2.89	10.05	10.50	10.70			0.20	1.90
Bolivia	1.58	1.60	1.61	2.53	2.28	2.30	3.99	3.65	3.70			0.05	1.37
Uruguay	0.93	1.22	1.30	0.75	2.62	2.38	0.70	3.20	3.10			-0.10	-3.13
East Asia													
China	10.24	10.47	10.50	1.98	1.99	1.97	20.28	20.84	20.70			-0.14	-0.67
Korea, South	0.06	0.07	0.07	2.03	2.07	2.06	0.13	0.14	0.14			0.00	0.71
Korea, North	0.16	0.16	0.16	1.15	1.15	1.15	0.18	0.18	0.18			0.00	0.00
Japan	0.15	0.16	0.16	1.60	1.59	1.64	0.24	0.25	0.26			0.01	4.86
India	13.08	13.00	12.80	0.95	0.91	0.95	12.41	11.88	12.20			0.33	2.74
Canada	2.12	2.26	2.20	3.09	3.09	3.05	6.54	6.98	6.70			-0.28	-4.03
Former Soviet Union - 12													
Russia	3.36	3.50	3.80	1.79	1.94	1.79	6.00	6.80	6.80			0.00	0.00
Ukraine	1.82	2.00	2.20	2.25	2.60	2.50	4.10	5.20	5.50			0.30	5.77
European Union	1.12	1.03	1.11	2.34	2.89	2.75	2.61	2.98	3.05			0.07	2.35
Southeast Asia													
Indonesia	0.33	0.32	0.31	1.18	1.17	1.16	0.39	0.38	0.36			-0.02	-4.00
Vietnam	0.03	0.03	0.03	1.60	1.61	1.62	0.05	0.05	0.04			0.00	-6.67
Thailand	0.03	0.03	0.03	1.63	1.63	1.63	0.05	0.05	0.05			0.00	0.00
Burma	0.13	0.12	0.12	1.04	1.04	1.04	0.13	0.13	0.12			-0.01	-4.00
Serbia	0.24	0.24	0.24	1.70	2.77	2.64	0.40	0.65	0.62			-0.03	-4.62
Mexico	0.12	0.09	0.10	1.52	2.06	1.55	0.18	0.19	0.16			-0.03	-16.22
Africa													
South Africa	1.15	1.15	1.20	2.40	1.58	2.33	2.76	1.82	2.80			0.99	54.27
Nigeria	1.20	1.15	1.35	0.98	1.00	0.96	1.18	1.15	1.30			0.15	13.04
Zambia	0.38	0.38	0.38	1.27	1.27	1.27	0.48	0.48	0.48			0.00	0.00
Uganda	0.17	0.17	0.17	1.18	1.18	1.18	0.20	0.20	0.20			0.00	0.00
Middle East													
Iran	0.08	0.07	0.07	2.27	2.36	2.43	0.17	0.17	0.17			0.01	3.03
Turkey	0.04	0.03	0.04	4.14	4.12	4.29	0.15	0.14	0.15			0.01	7.14
Others	0.90	0.90	0.93	1.81	1.82	1.81	1.63	1.63	1.68			0.05	2.88

World and Selected Countries and Regions

Table 12 Cottonseed Area, Yield, and Production

Country / Region	Area (Million hectares)			Yield (Metric tons per hectare)			Production (Million metric tons)			Change in Production			
	2022/23	Prel. 2023/24	2024/25 Proj. May	2022/23	Prel. 2023/24	2024/25 Proj. May	2022/23	Prel. 2023/24	2024/25 Proj. May	From last month MMT	Percent	From last year MMT	Percent
World	31.21	30.80	31.79	1.36	1.35	1.36	42.30	41.49	43.17			1.68	4.04
United States	2.95	2.61	3.69	1.36	1.27	1.23	4.01	3.31	4.55			1.25	37.75
Total Foreign	28.26	28.20	28.10	1.35	1.35	1.37	38.29	38.19	38.61			0.43	1.12
South Asia													
India	12.93	12.70	12.40	0.86	0.87	0.86	11.17	11.04	10.61			-0.42	-3.84
Pakistan	1.80	2.40	2.40	0.94	1.21	1.17	1.69	2.90	2.82			-0.09	-2.96
China	3.15	2.90	2.85	3.82	3.72	3.71	12.03	10.78	10.58			-0.20	-1.82
Former Soviet Union - 12													
Uzbekistan	1.05	1.03	1.00	1.19	1.10	1.14	1.25	1.14	1.14			0.00	0.00
Turkmenistan	0.55	0.55	0.55	0.64	0.64	0.64	0.35	0.35	0.35			0.00	0.00
Tajikistan	0.17	0.19	0.18	1.11	1.16	1.15	0.19	0.22	0.21			-0.01	-6.33
Kazakhstan	0.13	0.13	0.12	1.05	0.94	0.94	0.13	0.12	0.11			0.00	-3.42
South America													
Brazil	1.60	1.66	1.94	2.43	2.91	2.86	3.89	4.84	5.54			0.71	14.62
Argentina	0.51	0.56	0.53	0.84	1.06	1.09	0.43	0.59	0.57			-0.02	-3.21
Middle East													
Turkey	0.56	0.44	0.49	2.88	2.38	2.69	1.60	1.05	1.31			0.26	24.98
Syria	0.03	0.03	0.03	2.23	2.23	2.23	0.07	0.07	0.07			0.00	0.00
Iran	0.12	0.10	0.10	1.52	1.18	1.35	0.18	0.12	0.14			0.02	14.41
Australia	0.65	0.57	0.55	2.24	2.20	2.28	1.45	1.25	1.25			0.00	0.00
European Union	0.31	0.25	0.26	1.70	1.33	1.70	0.53	0.34	0.44			0.10	29.29
Africa													
Burkina Faso	0.62	0.54	0.55	0.35	0.40	0.40	0.21	0.21	0.22			0.01	4.25
Mali	0.60	0.71	0.72	0.35	0.52	0.53	0.21	0.37	0.38			0.02	4.09
Cameroon	0.23	0.25	0.25	1.29	1.35	1.35	0.30	0.33	0.33			0.00	0.00
Cote d'Ivoire	0.41	0.40	0.40	0.29	0.50	0.57	0.12	0.20	0.23			0.03	14.07
Benin	0.57	0.51	0.51	0.64	0.68	0.68	0.36	0.35	0.35			0.00	0.00
Tanzania	0.36	0.47	0.47	0.37	0.38	0.38	0.13	0.18	0.18			0.00	0.00
Egypt	0.14	0.11	0.10	0.92	0.96	0.94	0.13	0.11	0.09			-0.01	-11.32
Nigeria	0.27	0.27	0.27	0.56	0.56	0.56	0.15	0.15	0.15			0.00	0.00
Uganda	0.10	0.10	0.10	1.49	1.49	1.49	0.15	0.15	0.15			0.00	0.00
Zimbabwe	0.24	0.24	0.24	0.34	0.34	0.34	0.08	0.08	0.08			0.00	0.00
Sudan	0.20	0.20	0.20	1.53	1.53	1.53	0.31	0.31	0.31			0.00	0.00
Mexico	0.20	0.13	0.11	2.70	1.98	2.48	0.54	0.26	0.27			0.01	5.00
Burma	0.15	0.16	0.16	0.76	1.25	1.24	0.11	0.19	0.20			0.00	2.06
Others	0.62	0.62	0.64	0.84	0.83	0.86	0.53	0.52	0.55			0.03	5.80

World and Selected Countries and Regions

Table 13 Peanut Area, Yield, and Production

Country / Region	Area (Million hectares)			Yield (Metric tons per hectare)			Production (Million metric tons)			Change in Production			
	2022/23	Prel. 2023/24	2024/25 Proj. May	2022/23	Prel. 2023/24	2024/25 Proj. May	2022/23	Prel. 2023/24	2024/25 Proj. May	From last month MMT	Percent	From last year MMT	Percent
World	28.96	29.75	29.31	1.71	1.67	1.75	49.51	49.56	51.32			1.76	3.55
United States	0.56	0.64	0.64	4.50	4.19	4.49	2.51	2.67	2.88			0.20	7.63
Total Foreign	28.40	29.11	28.67	1.65	1.61	1.69	46.99	46.89	48.44			1.55	3.31
China	4.68	4.82	4.85	3.91	3.86	3.92	18.33	18.60	19.00			0.40	2.15
Africa													
Nigeria	3.40	3.45	3.45	1.26	1.25	1.25	4.28	4.30	4.30			0.00	0.00
Sudan	3.07	3.01	2.50	0.86	0.46	0.80	2.64	1.39	2.00			0.61	44.30
Senegal	1.23	1.25	1.25	1.23	1.38	1.36	1.50	1.73	1.70			-0.03	-1.62
Cameroon	0.43	0.43	0.43	1.40	1.40	1.40	0.60	0.60	0.60			0.00	0.00
Ghana	0.37	0.37	0.37	1.65	1.62	1.62	0.61	0.60	0.60			0.00	0.00
Chad	0.76	0.76	0.76	1.10	1.09	1.09	0.83	0.83	0.83			0.00	0.00
Malawi	0.40	0.40	0.40	0.88	0.88	0.88	0.35	0.35	0.35			0.00	0.00
Congo (Kinshasa)	0.53	0.53	0.53	0.91	0.91	0.91	0.48	0.48	0.48			0.00	0.00
Niger	0.97	0.92	0.92	0.69	0.65	0.65	0.67	0.60	0.60			0.00	0.00
Mali	0.43	0.43	0.43	1.04	1.00	1.00	0.44	0.43	0.43			0.00	0.00
Uganda	0.35	0.35	0.35	0.57	0.57	0.57	0.20	0.20	0.20			0.00	0.00
Burkina Faso	0.63	0.64	0.64	0.89	0.90	0.90	0.56	0.58	0.58			0.00	0.00
Guinea	0.90	0.90	0.90	1.14	1.11	1.11	1.03	1.00	1.00			0.00	0.00
Egypt	0.06	0.06	0.06	3.20	3.20	3.20	0.21	0.21	0.21			0.00	0.00
Central African Republic	0.13	0.13	0.13	1.15	1.15	1.15	0.15	0.15	0.15			0.00	0.00
South Africa	0.03	0.04	0.04	2.26	2.00	2.00	0.07	0.08	0.08			0.00	0.00
Mozambique	0.38	0.38	0.38	0.34	0.34	0.34	0.13	0.13	0.13			0.00	0.00
Cote d'Ivoire	0.17	0.17	0.17	1.47	1.45	1.45	0.24	0.24	0.24			0.00	0.00
Benin	0.17	0.18	0.18	0.96	0.97	0.97	0.16	0.18	0.18			0.00	0.00
South Asia													
India	4.96	5.50	5.50	1.27	1.20	1.29	6.30	6.60	7.10			0.50	7.58
Pakistan	0.13	0.13	0.13	0.88	0.88	0.88	0.12	0.12	0.12			0.00	0.00
Southeast Asia													
Indonesia	0.54	0.52	0.50	1.72	1.69	1.68	0.93	0.88	0.84			-0.04	-4.55
Burma	1.07	1.07	1.08	1.55	1.59	1.63	1.65	1.70	1.75			0.05	2.94
Vietnam	0.15	0.15	0.14	2.63	2.62	2.64	0.40	0.38	0.37			-0.01	-3.39
Thailand	0.02	0.02	0.02	1.67	1.67	1.67	0.04	0.04	0.04			0.00	0.00
South America													
Argentina	0.37	0.40	0.40	2.59	3.48	3.38	0.96	1.38	1.35			-0.03	-1.82
Brazil	0.22	0.24	0.26	4.05	3.79	3.46	0.89	0.89	0.90			0.01	1.12
Mexico	0.05	0.05	0.05	1.76	1.74	1.70	0.09	0.09	0.09			-0.01	-7.61
Others	1.80	1.81	1.85	1.18	1.19	1.21	2.13	2.16	2.25			0.09	4.26

Table 14 Sunflowerseed Area, Yield, and Production

Country / Region	Area (Million hectares)			Yield (Metric tons per hectare)			Production (Million metric tons)			Change in Production			
	2022/23	Prel. 2023/24	2024/25 Proj. May	2022/23	Prel. 2023/24	2024/25 Proj. May	2022/23	Prel. 2023/24	2024/25 Proj. May	From last month		From last year	
										MMT	Percent	MMT	Percent
World	28.30	27.61	27.87	1.87	1.99	1.99	52.78	54.83	55.43			0.60	1.09
United States	0.65	0.51	0.37	1.97	2.00	1.99	1.27	1.03	0.74			-0.29	-28.33
Total Foreign	27.65	27.09	27.50	1.86	1.99	1.99	51.51	53.80	54.69			0.89	1.65
Former Soviet Union - 12													
Russia	9.11	9.30	9.50	1.78	1.84	1.79	16.25	17.10	17.00			-0.10	-0.58
Ukraine	5.70	6.00	6.20	2.14	2.42	2.37	12.20	14.50	14.70			0.20	1.38
Kazakhstan	1.09	1.13	1.15	1.20	1.10	1.13	1.30	1.24	1.30			0.06	5.18
European Union	4.97	4.80	4.95	1.89	2.08	2.20	9.39	10.00	10.90			0.90	9.00
South America													
Argentina	2.45	2.00	1.85	2.05	2.05	2.05	5.02	4.10	3.80			-0.30	-7.32
Uruguay	0.01	0.01	0.01	0.91	0.92	1.00	0.01	0.01	0.01			0.00	-9.09
Bolivia	0.23	0.24	0.25	1.39	1.38	1.36	0.32	0.33	0.34			0.01	3.03
Brazil	0.06	0.06	0.06	1.52	1.46	1.50	0.09	0.09	0.09			0.00	1.12
Paraguay	0.03	0.02	0.03	1.64	1.63	1.60	0.04	0.04	0.04			0.00	2.56
China	0.62	0.60	0.55	2.79	2.83	2.91	1.74	1.70	1.60			-0.10	-5.88
South Asia													
India	0.36	0.15	0.18	0.59	0.75	0.63	0.22	0.11	0.11			0.00	0.89
Pakistan	0.07	0.08	0.08	1.72	1.35	1.31	0.12	0.11	0.11			0.00	-2.78
Middle East													
Turkey	0.79	0.70	0.69	2.41	2.21	2.43	1.90	1.55	1.68			0.13	8.06
Iran	0.04	0.04	0.04	1.02	1.05	1.07	0.04	0.04	0.05			0.00	4.65
Israel	0.00	0.00	0.00	2.00	4.00	4.00	0.00	0.00	0.00			0.00	0.00
Africa													
Egypt	0.01	0.01	0.01	2.75	2.63	2.75	0.02	0.02	0.02			0.00	4.76
Morocco	0.03	0.02	0.02	1.11	1.27	1.17	0.03	0.03	0.03			0.00	0.00
South Africa	0.56	0.53	0.54	1.30	1.16	1.30	0.72	0.62	0.70			0.09	13.82
Burma	0.60	0.60	0.60	0.65	0.65	0.65	0.39	0.39	0.39			0.00	0.00
Canada	0.04	0.04	0.03	2.21	2.30	2.18	0.08	0.09	0.07			-0.02	-21.74
Australia	0.03	0.03	0.02	1.48	1.28	1.50	0.04	0.03	0.03			0.00	-6.25
Others	0.86	0.73	0.73	1.83	2.33	2.36	1.58	1.70	1.73			0.03	1.53

World and Selected Countries and Regions

Table 15 Rapeseed Area, Yield, and Production

Country / Region	Area (Million hectares)			Yield (Metric tons per hectare)			Production (Million metric tons)			Change in Production			
	2022/23	Prel. 2023/24	2024/25 Proj. May	2022/23	Prel. 2023/24	2024/25 Proj. May	2022/23	Prel. 2023/24	2024/25 Proj. May	From last month MMT	Percent	From last year MMT	Percent
World	41.95	42.50	42.58	2.12	2.08	2.07	88.85	88.39	88.34			-0.05	-0.06
United States	0.88	0.94	0.93	1.98	2.01	2.02	1.74	1.90	1.89			-0.01	-0.53
Total Foreign	41.07	41.55	41.65	2.12	2.08	2.08	87.11	86.50	86.46			-0.04	-0.05
European Union	5.92	6.22	5.85	3.31	3.22	3.25	19.61	20.00	19.00			-1.00	-5.00
United Kingdom	0.37	0.39	0.28	3.73	3.11	3.21	1.36	1.22	0.90			-0.32	-25.99
Switzerland	0.03	0.03	0.03	3.68	3.52	3.52	0.09	0.09	0.09			0.00	0.00
Canada	8.60	8.86	8.70	2.17	2.12	2.25	18.70	18.80	19.60			0.80	4.26
China	7.25	7.35	7.40	2.14	2.10	2.11	15.53	15.40	15.60			0.20	1.30
South Asia													
India	8.85	9.25	9.30	1.28	1.35	1.30	11.30	12.50	12.10			-0.40	-3.20
Pakistan	0.51	0.38	0.30	1.46	1.46	1.50	0.74	0.56	0.45			-0.11	-19.21
Bangladesh	0.81	0.80	1.10	1.30	1.29	1.30	1.05	1.03	1.43			0.40	38.83
Former Soviet Union - 12													
Russia	2.27	2.05	2.20	1.89	2.05	1.95	4.30	4.20	4.30			0.10	2.38
Ukraine	1.23	1.50	1.35	2.85	2.93	2.74	3.50	4.40	3.70			-0.70	-15.91
Belarus	0.36	0.40	0.48	2.22	2.25	2.14	0.80	0.90	1.03			0.13	13.89
Kazakhstan	0.13	0.09	0.10	1.48	1.32	1.35	0.19	0.12	0.14			0.01	9.76
Australia	3.90	3.50	3.80	2.12	1.63	1.71	8.27	5.70	6.50			0.80	14.04
South America													
Chile	0.03	0.04	0.04	3.79	3.82	3.86	0.13	0.15	0.14			-0.01	-6.90
Paraguay	0.07	0.07	0.08	1.77	1.50	1.53	0.12	0.11	0.12			0.01	9.52
Ethiopia	0.03	0.03	0.03	1.80	1.80	1.80	0.05	0.05	0.05			0.00	0.00
Others	0.72	0.61	0.63	1.91	2.13	2.12	1.38	1.29	1.33			0.04	3.34

World and Selected Countries and Regions

Table 16 Copra, Palm Kernel, and Palm Oil Production

Country / Region	Production (Million metric tons)			Change in Production			
	2022/23	Prel.	2024/25 Proj.	From last month		From last year	
		2023/24	May	MMT	Percent	MMT	Percent
Oilseed, Copra							
Philippines	2.60	2.90	2.50			-0.40	-13.79
Indonesia	1.68	1.69	1.68			-0.01	-0.59
India	0.94	0.94	0.94			0.00	0.00
Vietnam	0.29	0.29	0.29			0.00	0.00
Papua New Guinea	0.10	0.09	0.10			0.01	11.11
Sri Lanka	0.07	0.07	0.07			0.00	0.00
Thailand	0.07	0.07	0.07			0.00	0.00
Mexico	0.05	0.05	0.05			0.00	0.00
Cote d'Ivoire	0.03	0.03	0.03			0.00	0.00
Malaysia	0.03	0.03	0.03			0.00	0.00
World	6.00	6.21	5.81			-0.40	-6.44
Oilseed, Palm Kernel							
Indonesia	12.00	12.20	12.20			0.00	0.00
Malaysia	4.49	4.70	4.70			0.00	0.00
Nigeria	0.90	1.10	1.10			0.00	0.00
Thailand	0.86	0.86	0.87			0.01	1.16
Colombia	0.33	0.35	0.35			0.00	0.00
Guatemala	0.18	0.18	0.19			0.00	0.00
Papua New Guinea	0.17	0.18	0.18			0.00	0.00
Brazil	0.15	0.16	0.16			0.00	0.00
Honduras	0.16	0.16	0.16			0.00	0.00
Cameroon	0.15	0.15	0.15			0.00	0.00
World	20.07	20.71	20.74			0.03	0.14
Oil, Palm							
Indonesia	46.50	47.00	47.50			0.50	1.06
Malaysia	18.39	19.00	19.00			0.00	0.00
Thailand	3.33	3.28	3.36			0.08	2.44
Colombia	1.80	1.90	1.95			0.05	2.63
Nigeria	1.40	1.50	1.50			0.00	0.00
Guatemala	0.91	0.92	0.95			0.02	2.17
Papua New Guinea	0.80	0.82	0.83			0.01	1.22
Cote d'Ivoire	0.60	0.60	0.60			0.00	0.00
Honduras	0.60	0.60	0.60			0.00	0.00
Brazil	0.57	0.59	0.60			0.02	3.45
World	78.00	79.31	80.03			0.72	0.91

World and Selected Countries and Regions

Table 17 Cotton Area, Yield, and Production

Country / Region	Area (Million hectares)			Yield (Kilograms per hectare)			Production (Million 480 lb. bales)			Change in Production			
	2022/23	Prel. 2023/24	2024/25 Proj. May	2022/23	Prel. 2023/24	2024/25 Proj. May	2022/23	Prel. 2023/24	2024/25 Proj. May	From last month MBales	Percent	From last year MBales	Percent
World	31.73	31.50	32.44	798	785	799	116.31	113.57	119.05			5.48	4.82
United States	2.95	2.61	3.69	1,068	1,008	943	14.47	12.07	16.00			3.93	32.60
Total Foreign	28.78	28.90	28.75	770	765	780	101.84	101.50	103.05			1.55	1.52
South Asia													
India	12.93	12.70	12.40	443	446	439	26.30	26.00	25.00			-1.00	-3.85
Pakistan	1.80	2.40	2.40	472	608	590	3.90	6.70	6.50			-0.20	-2.99
China	3.15	2.90	2.85	2,122	2,065	2,063	30.70	27.50	27.00			-0.50	-1.82
South America													
Brazil	1.60	1.66	1.94	1,595	1,911	1,874	11.72	14.57	16.70			2.13	14.62
Argentina	0.51	0.56	0.53	495	622	643	1.17	1.60	1.55			-0.05	-3.13
Paraguay	0.05	0.06	0.07	890	812	837	0.18	0.21	0.25			0.05	21.95
Africa													
Burkina Faso	0.62	0.54	0.55	273	313	317	0.78	0.77	0.80			0.03	3.90
Mali	0.60	0.71	0.72	269	399	408	0.74	1.30	1.35			0.05	3.85
Cote d'Ivoire	0.41	0.40	0.40	236	411	463	0.45	0.75	0.85			0.11	14.09
Benin	0.57	0.51	0.51	418	446	446	1.10	1.05	1.05			0.00	0.00
Egypt	0.14	0.11	0.10	661	693	675	0.43	0.35	0.31			-0.04	-11.43
Cameroon	0.23	0.25	0.25	563	587	587	0.60	0.66	0.66			0.00	0.00
Tanzania	0.36	0.47	0.47	184	220	220	0.31	0.47	0.47			0.00	0.00
Nigeria	0.27	0.27	0.27	282	282	282	0.35	0.35	0.35			0.00	0.00
Zimbabwe	0.24	0.24	0.24	195	195	195	0.22	0.22	0.22			0.00	0.00
Ethiopia	0.05	0.06	0.06	726	713	713	0.18	0.18	0.18			0.00	0.00
Former Soviet Union - 12													
Uzbekistan	1.05	1.03	1.00	664	613	631	3.20	2.90	2.90			0.00	0.00
Turkmenistan	0.55	0.55	0.55	356	356	356	0.90	0.90	0.90			0.00	0.00
Tajikistan	0.17	0.19	0.18	615	647	641	0.48	0.57	0.53			-0.04	-6.19
Kazakhstan	0.13	0.13	0.12	584	523	526	0.34	0.30	0.29			-0.01	-3.33
Middle East													
Turkey	0.56	0.44	0.49	1,922	1,583	1,796	4.90	3.20	4.00			0.80	25.00
Syria	0.03	0.03	0.03	1,161	1,161	1,161	0.16	0.16	0.16			0.00	0.00
Iran	0.12	0.10	0.10	977	762	871	0.53	0.35	0.40			0.05	14.29
Australia	0.65	0.57	0.55	1,943	1,910	1,979	5.80	5.00	5.00			0.00	0.00
Mexico	0.20	0.13	0.11	1,720	1,491	1,583	1.58	0.90	0.80			-0.10	-10.81
Burma	0.15	0.16	0.16	653	660	653	0.45	0.47	0.48			0.01	2.13
Others	1.66	1.76	1.73	578	506	549	4.40	4.10	4.36			0.26	6.27

World and Selected Countries and Regions

TABLE 18

The table below presents a record of the May projection and the final Estimate. Using world wheat production as an example, the "root mean square error" means that chances are 2 out of 3 that the current forecast will not be above or below the final estimate by more than 3 percent. Chances are 9 out of 10 (90% confidence level) that the difference will not exceed 5 percent. The average difference between the May projection and the final estimate is 15.7 million tons, ranging from 1.7 million to 35 million tons. The May projection has been below the estimate 25 times and above 18 times.

RELIABILITY OF PRODUCTION PROJECTIONS 1/

COMMODITY AND REGION	Root mean square error	90 percent confidence interval	Difference between forecast and final estimate				
			Average	Smallest	Largest	Years	
						Below final	Above final
	Percent		---Million metric tons---				
WHEAT							
World	3.0	5.0	15.7	1.7	35.0	25	18
U.S.	6.8	11.5	3.0	0.0	9.8	22	21
Foreign	3.1	5.3	14.7	1.6	32.9	24	19
COARSE GRAINS 2/							
World	3.6	6.0	26.1	1.1	103.6	20	23
U.S.	13.5	22.7	20.7	0.9	103.8	23	20
Foreign	2.6	4.4	14.2	0.2	42.8	20	23
RICE (Milled)							
World	2.3	3.9	6.8	0.0	21.8	25	18
U.S.	8.2	13.8	0.4	0.0	1.1	23	20
Foreign	2.3	3.9	6.7	0.4	22.0	25	18
SOYBEANS							
World	NA	NA	13.4	0.4	34.8	7	8
U.S.	8.9	14.9	4.9	0.0	16.1	22	21
Foreign	NA	NA	8.7	0.2	35.6	8	7
COTTON			---Million 480-lb. bales---				
World	6.0	10.1	4.3	0.1	16.7	24	19
U.S.	12.6	21.3	1.7	0.1	5.5	20	23
Foreign	6.0	10.1	3.2	0.1	12.2	23	20
UNITED STATES			-----Million bushels-----				
<i>CORN</i>	14.3	24.0	740	8	4,010	19	24
<i>SORGHUM</i>	24.8	41.8	84	0	228	21	21
<i>BARLEY</i>	14.7	24.7	26	1	206	17	26
<i>OATS</i>	24.8	41.7	29	1	231	9	34

1/ Marketing years 1981/82 through 2023/24 for grains, soybeans, and cotton. Final for grains, soybeans, and cotton is defined as the first November estimate following the marketing year for 1981/82 through 2022/23, and for 2023/24 the last month's estimate.

2/ Includes corn, sorghum, barley, oats, rye, millet, and mixed grain.