



United States  
Department of  
Agriculture

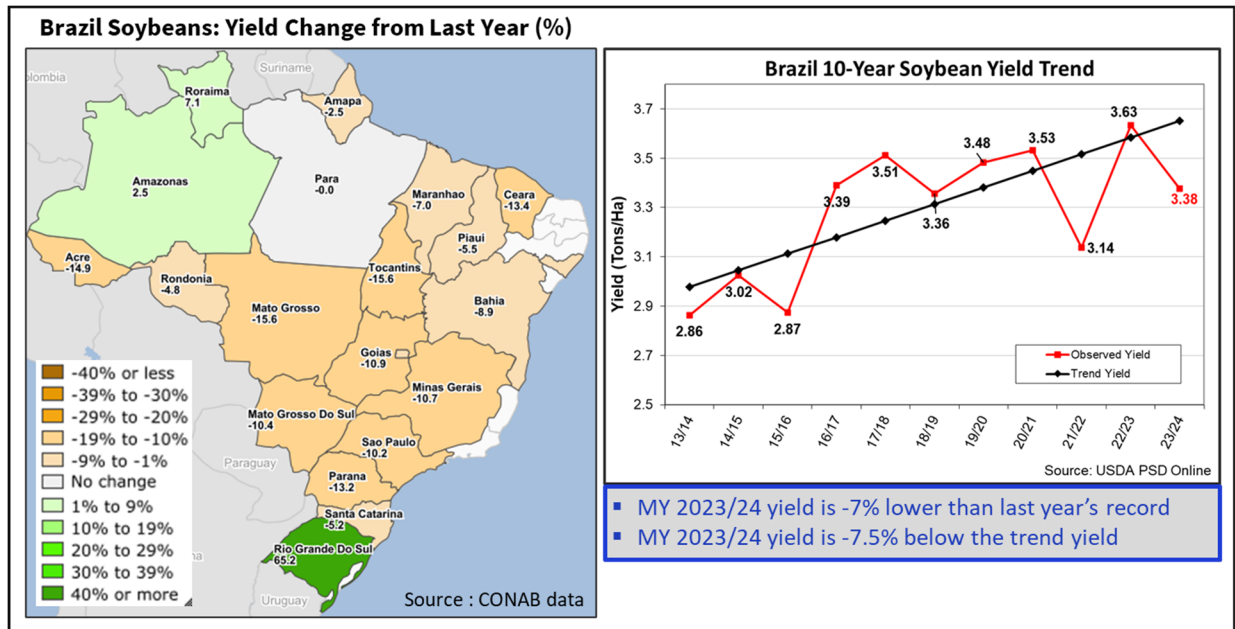
Foreign  
Agricultural  
Service

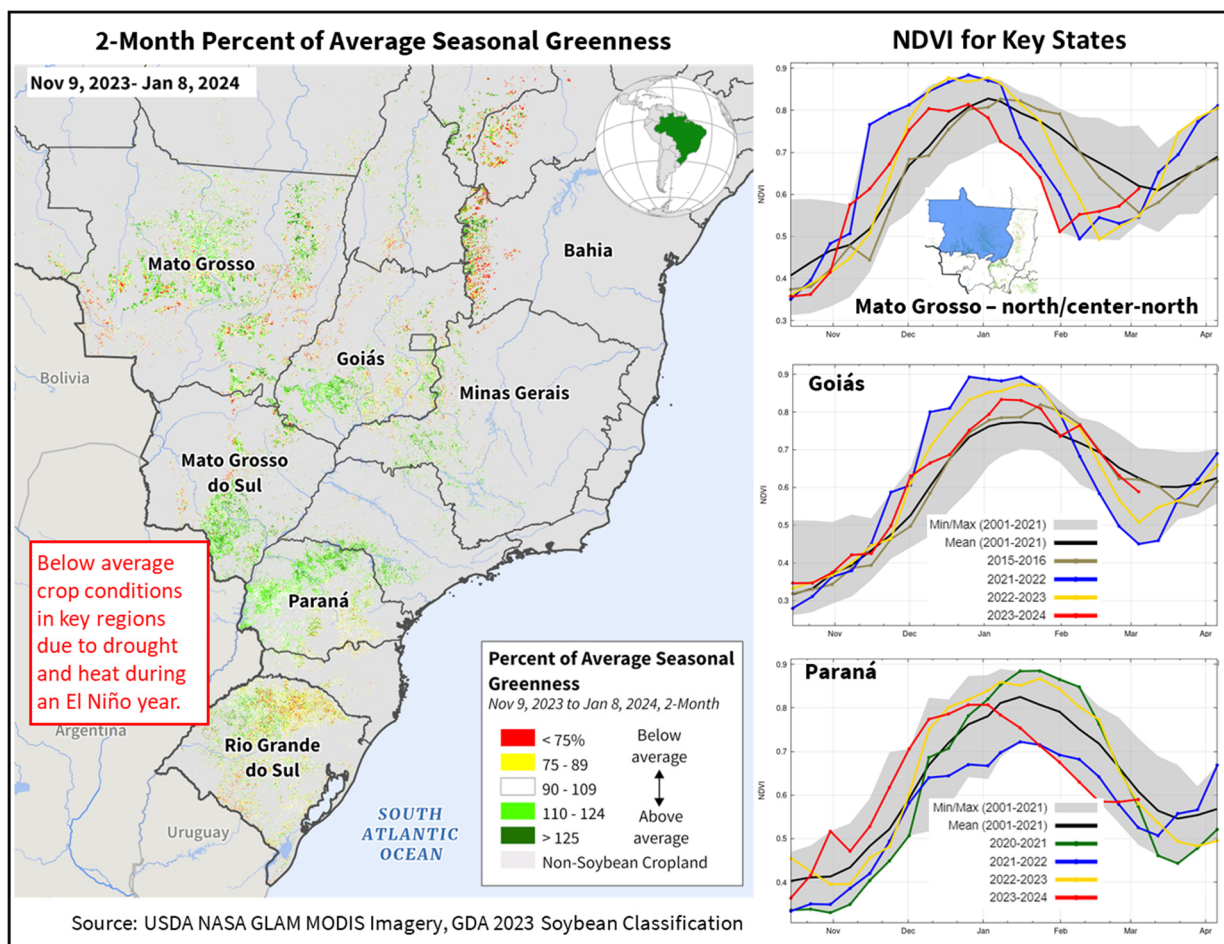
# World Agricultural Production

Circular Series  
WAP 3-24  
March 2024

## Brazil Soybeans: Production Further Reduced Based on Harvest Results

Soybean production in Brazil for marketing year (MY) 2023/24 is estimated at 155.0 million metric tons (mmt), lower by 1.0 mmt (1 percent) from last month, and lower by 7.0 mmt (4 percent) from last season's record crop. Harvested area is estimated at a record 45.9 million hectares (mha), unchanged from last month, and up 1.3 mha (3 percent) from last year. Yield is estimated below the 10-year trend at 3.38 tons per hectare (t/ha), down 1 percent from last month's yield, and down 7 percent from last year's record yield. Current harvest results led to the lower production this month.





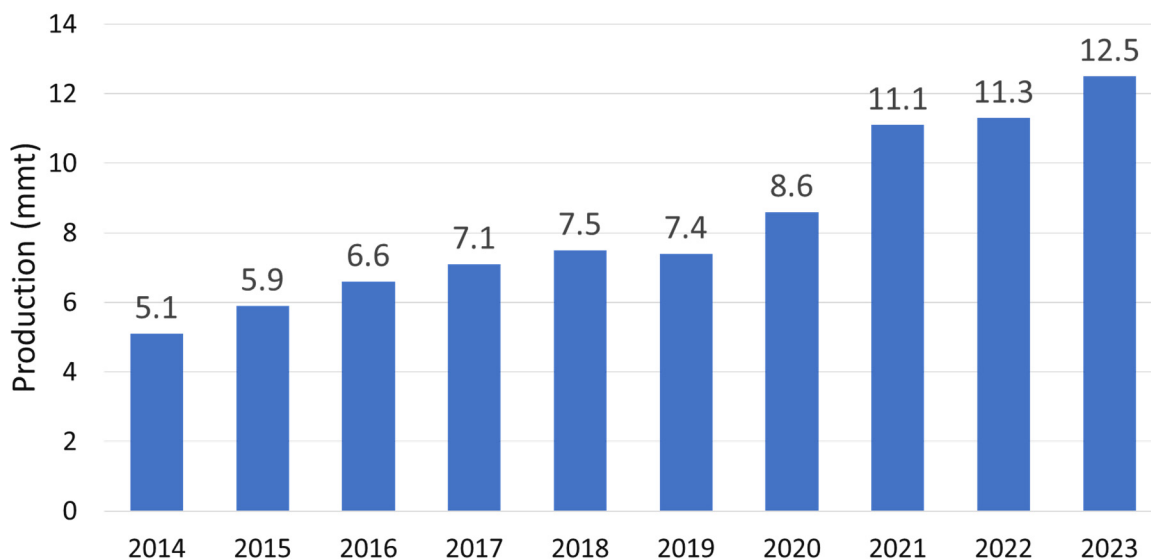
Overall, harvest is approximately at the halfway mark of 47 percent in early March. The fast harvest pace early on has now slowed due to a combination of a staggered planting schedule and heavy rainfall over the last month. Harvest progress is 82 percent complete in Mato Grosso, 52 percent in Goiás, 58 percent in Mato Grosso do Sul, and 64 percent in Paraná. The state of Rio Grande do Sul harvests the crop later because of the later planting schedule. At the harvest midpoint, reports indicate yields are below average in several states in contrast to the record yields of MY 2022/23. The state with the worst outcome last season, Rio Grande do Sul, is one of the few with more optimistic yield prospects. Satellite imagery indicates below-average yields for Mato Grosso, Mato Grosso do Sul, Goiás and Paraná, but above-average yields for Rio Grande do Sul. State agency reports from Mato Grosso indicate yields reduced 10 percent from initial estimates and in Paraná the reduction is 16 percent from initial projections. Recent rains in southern Brazil aided recovery of the later planted crop in Rio Grande do Sul with 86 percent in critical reproductive stages. Harvest began in January, and will continue through late May in the major producing areas. (For more information, please contact [Sunita.Yadav-Pauletti@usda.gov](mailto:Sunita.Yadav-Pauletti@usda.gov).)

### India Rapeseed: Record Production

USDA estimates rapeseed production for marketing year 2023/24 at a record 12.5 million metric tons (mmt), up 4 percent from last month, and 11 percent from last year. Harvested area is estimated at a record 9.3 million hectares, unchanged from last month and up 4 percent from last

year due to favorable planting conditions. Yield is estimated at 1.35 metric tons per hectare, up 4 percent from last month, and 6 percent from last year.

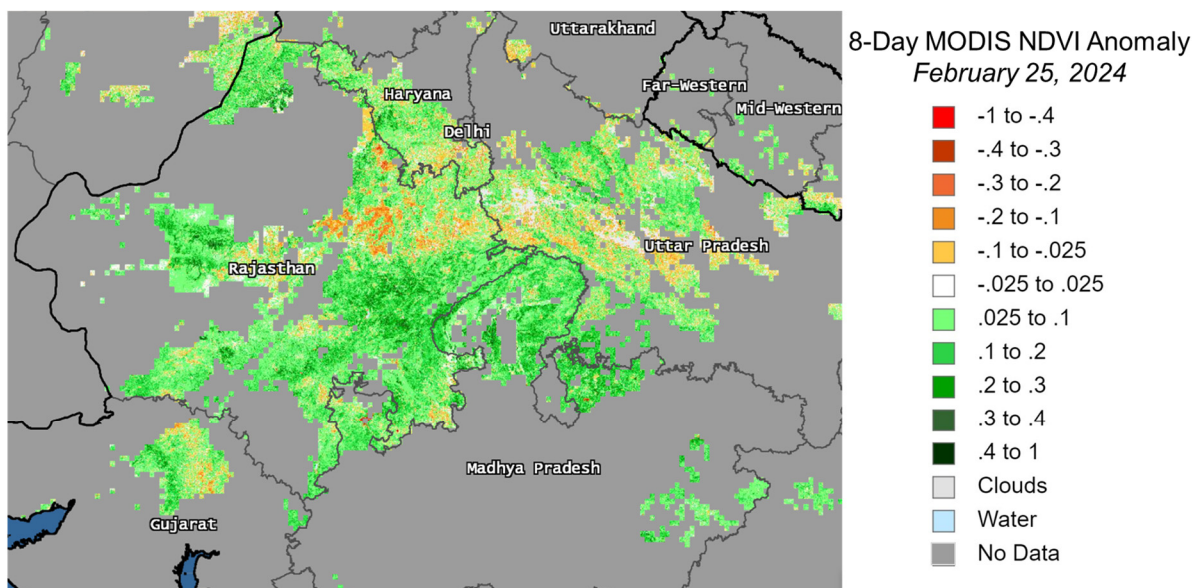
### Record India Rapeseed Production



Source: USDA PSD Online

The satellite-derived 8-day MODIS Normalized Difference Vegetation Index (NDVI) anomaly showed strong crop vigor in Rajasthan before harvest. Industry reports have not reported any incidences of pests and disease. Currently, the crop is being harvested in Rajasthan and Madhya Pradesh.

### Major Rapeseed Areas in Rajasthan and Uttar Pradesh Show Strong Crop Vigor



Source: USDA/NASA, MODIS NDVI Anomaly (250m) imagery; International Food Policy Research Institute (IFPRI), Spatial Production Allocation Model 2010 crop mask.



Rapeseed is grown only in the *rabi* season. Rapeseed is planted in late October to January and harvested in March. (For more information, please contact [Arnella.Trent@usda.gov](mailto:Arnella.Trent@usda.gov).)

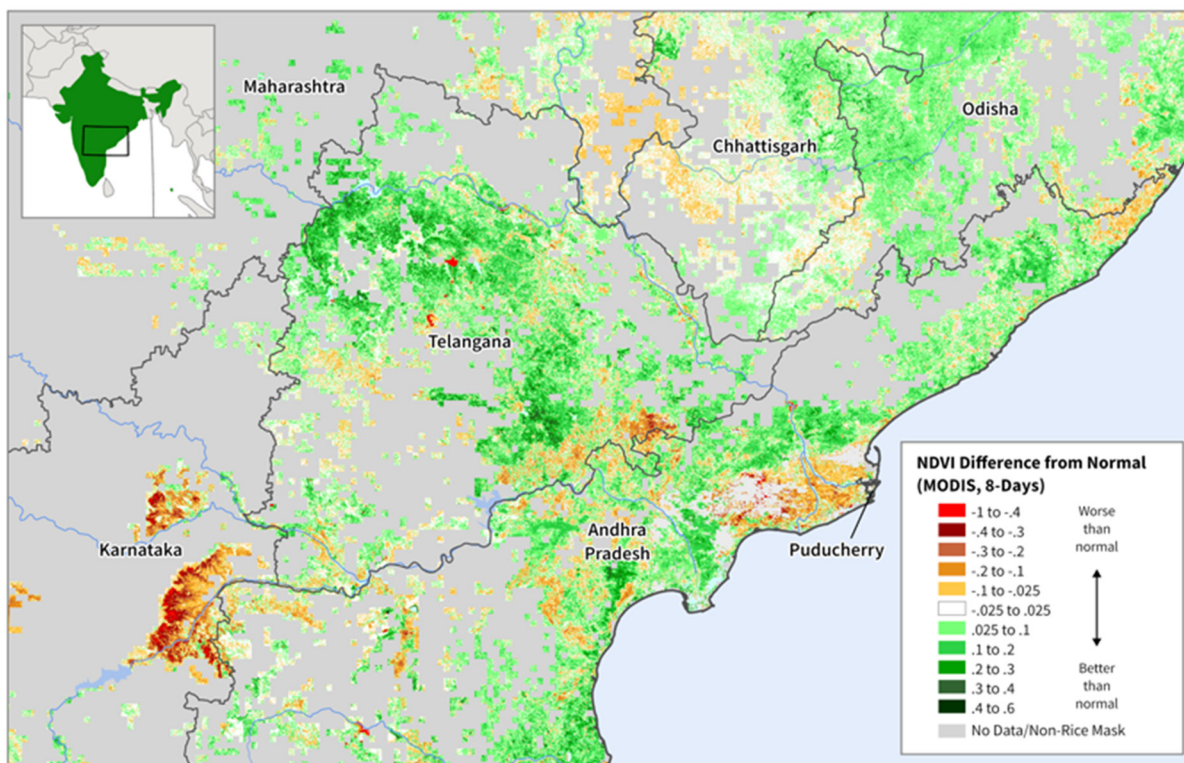
### India Rice: Production Marginally Down from Previous Record

USDA estimates India rice production for marketing year (MY) 2023/24 at 134.0 million metric tons (milled basis), up 2 percent from last month, but down 1 percent from last year. Harvested area is estimated at a record 48.0 million hectares, up 2 percent from last month and slightly above last year. Yield is estimated at 4.19 tons per hectare, down 2 percent from last year.

Rice production is expected to drop marginally from the MY 2022/23 record production. Poor rainfall in July was followed by favorable August and September rainfall, which encouraged planting. However, a premature end to the monsoon rainfall left the late-planted crop short of moisture and lowered yield potential. Although the *rabi* crop is grown under both irrigated and rainfed conditions, there have been pockets of drought-like conditions in Telangana, the largest *rabi* producer. Consequently, crop vigor is below average in some areas of southeast Telangana, as shown in the satellite-derived MODIS Normalized Difference Vegetation Index (NDVI).

### India: NDVI Difference from Normal

February 18 to 25, 2024



Source: MODIS NDVI Difference from Normal (Feb 18 to 25, 2024); GEOGLAM Best Available Crop Specific (BACS) Rice Mask



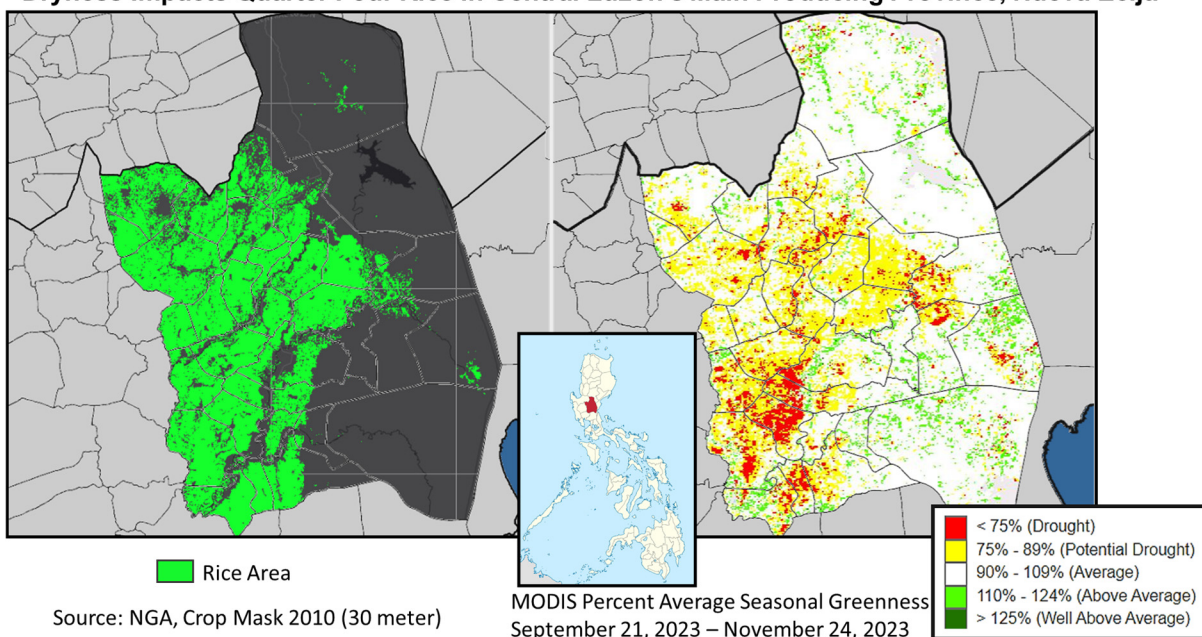
Rice is grown in both *kharif* and *rabi* seasons. The *kharif* crop, which accounts for 83 percent of total crop production, was harvested in November. The *rabi* crop will be harvested in March. (For more information, please contact [Arnella.Trent@usda.gov](mailto:Arnella.Trent@usda.gov).)

### Philippines Rice: Dry Weather Continues to Impact Production

USDA estimates marketing year (MY) 2023/24 rice production at 12.3 million metric tons (milled basis), down 2 percent from last month, and 3 percent from last year. Harvested area is estimated at 4.8 million hectares, unchanged from last month, but down 1 percent from the previous year. Yield (rough basis) is estimated at 4.07 tons per hectare, down 2 percent from last month and last year.

Rice in the Philippines is cultivated throughout the year by quarter. USDA’s MY begins with the third quarter, July through September. The highest rice outputs are produced in quarters four and one, which represents about 38 and 23 percent of total production, respectively.

**Dryness Impacts Quarter Four Rice in Central Luzon’s Main Producing Province, Nueva Ecija**

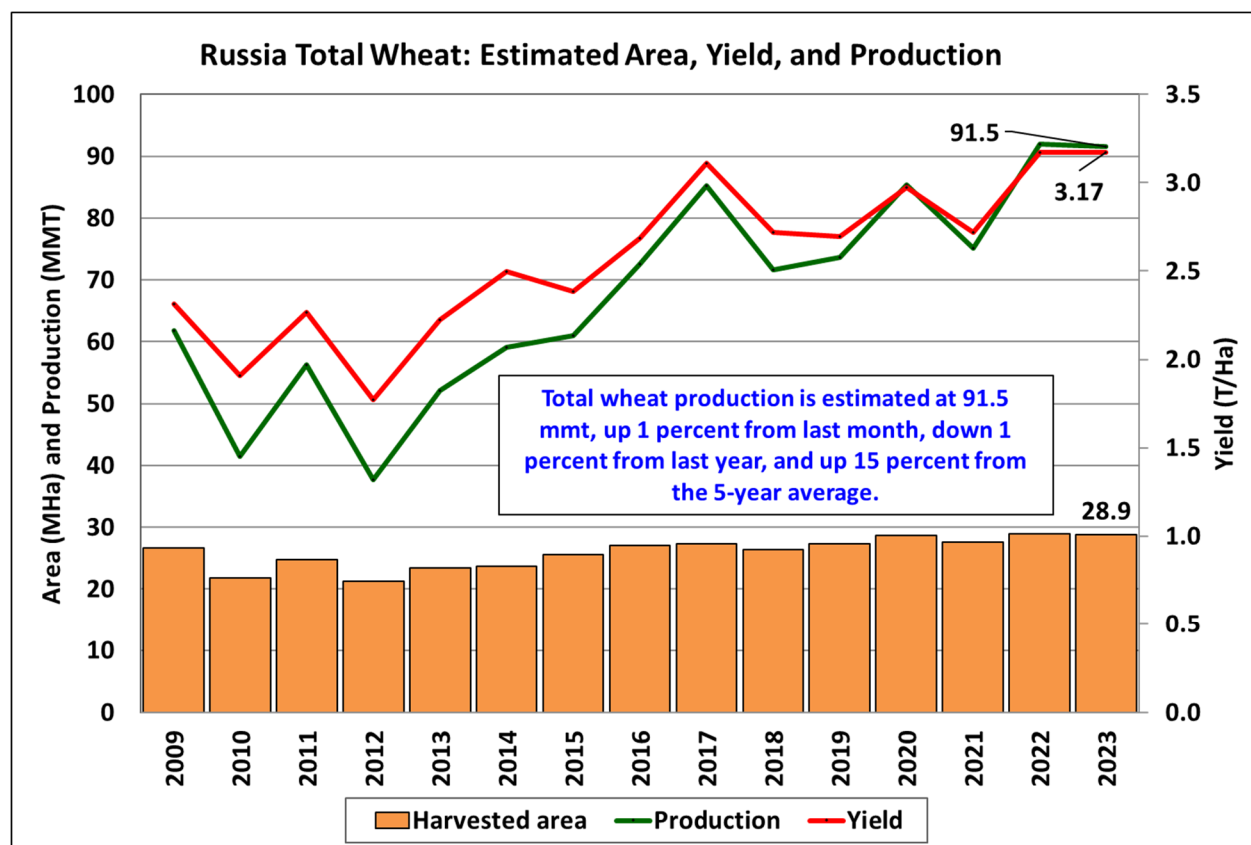


After achieving higher-than-expected rice output for the third quarter, extended dry weather negatively impacted rice output in the fourth quarter, most notably in the northeastern Central Luzon region. Central Luzon accounts for roughly 20 percent of the fourth quarter output. The province most impacted in Central Luzon was Nueva Ecija, which accounts for 50 percent of the region’s output. According to the Philippine Statistical Authority (PSA), Nueva Ecija’s fourth quarter rice output was down 7 percent from last year and 24 percent from the 5-year average. Central Luzon’s fourth quarter rice output was down 6 percent from last year and 14 percent from the 5-year average. Total fourth quarter rice output was down 2 percent from last year, but up 6 percent from the 5-year average, per PSA official reports. (For more information, please contact [Justin.Jenkins@usda.gov](mailto:Justin.Jenkins@usda.gov).)

## Russia Wheat: Rosstat Releases Second 2023 Crop Statistics Report

Russia wheat production for marketing year 2023/24 is estimated at 91.5 million metric tons (mmt), up 1 percent from last month, but down 1 percent from last year, and up 15 percent from the 5-year average. The estimate includes 64.0 mmt of winter wheat and 27.5 mmt of spring wheat. Total wheat yield is estimated at 3.17 metric tons per hectare (t/ha), unchanged relative to last year and up 11 percent from the 5-year average. Total harvested area is estimated at 28.8 million hectares (mha), down 1 percent from last year, but up 4 percent from the 5-year average.

The minor month-to-month production revision is based on the updated statistics for the 2023 crops released by the Russian statistical agency, Rosstat, in late-February 2024. According to the second Rosstat report, year-to-year area is down for the winter crop, but up for the spring crop. Additionally, despite the challenging weather conditions during the whole growing season and the abnormally wet weather during harvest, the spring wheat yield remained above the 5-year average by 12 percent.



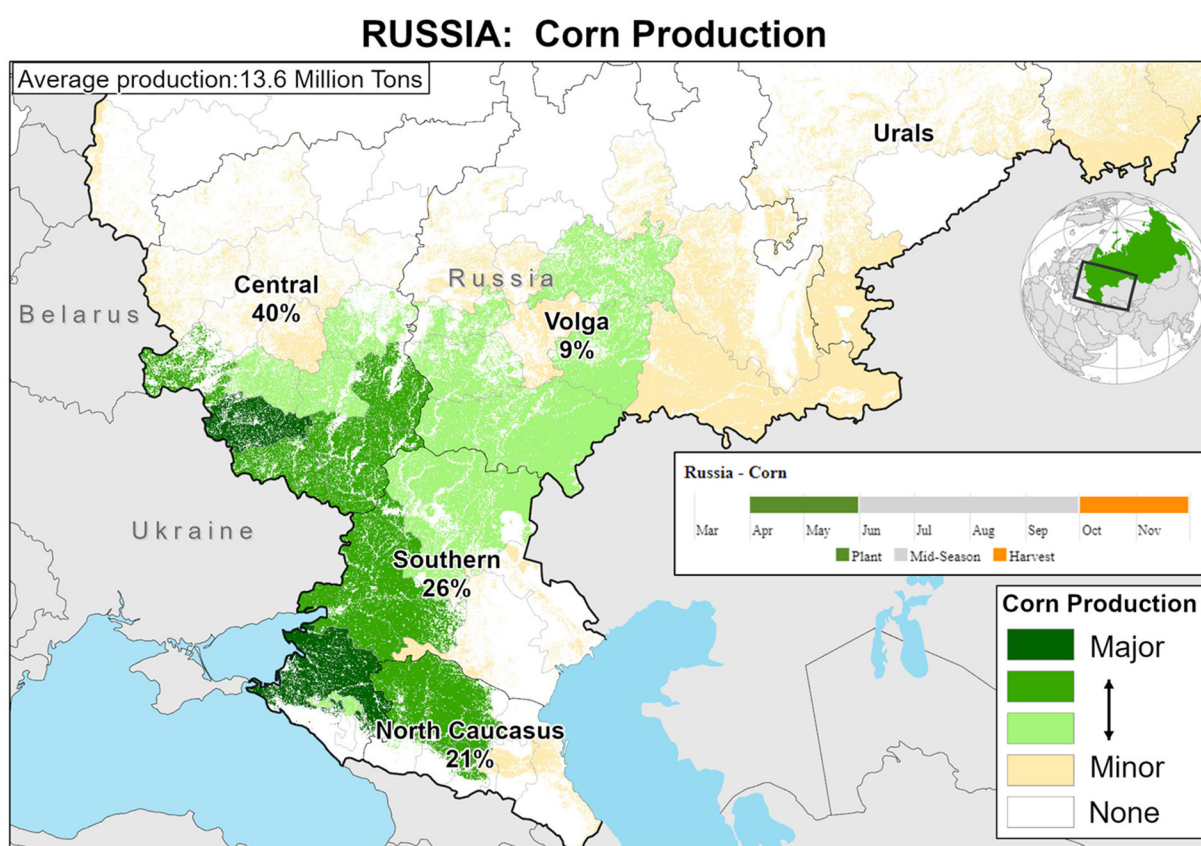
Source: USDA PSD Online

Winter wheat typically accounts for about 70 percent of total production and is grown primarily in the European part of Russia. Spring wheat, which accounts for about 30 percent of total production, is mainly planted in the regions bordering Kazakhstan: the Volga, Urals, and Siberian Districts of Russia.

Area, yield, and production estimates for Russia winter wheat and spring wheat are available on USDA’s PSD Online. Select “Downloadable Data Sets” and open the zipped file for “Russia Wheat; Winter/Spring Area & Production” (*For more information, please contact [Iliana.Mladenova@usda.gov](mailto:Iliana.Mladenova@usda.gov).*)

### Russia Corn: Record Yield According to Rosstat’s Second 2023 Crop Statistics Report

Russia corn production for marketing year (MY) 2023/24 is estimated at 16.6 million metric tons, down 2 percent from last month, up 5 percent from last year and 18 percent from the 5-year average. Total corn yield is estimated at a record 6.92 tons per hectare (t/ha), up 5 percent from last month, 15 percent from last year, and 29 percent above the 5-year average. Total harvested area is estimated at 2.4 million hectares, down 7 percent from last month, and 9 percent from last year and the 5-year average.



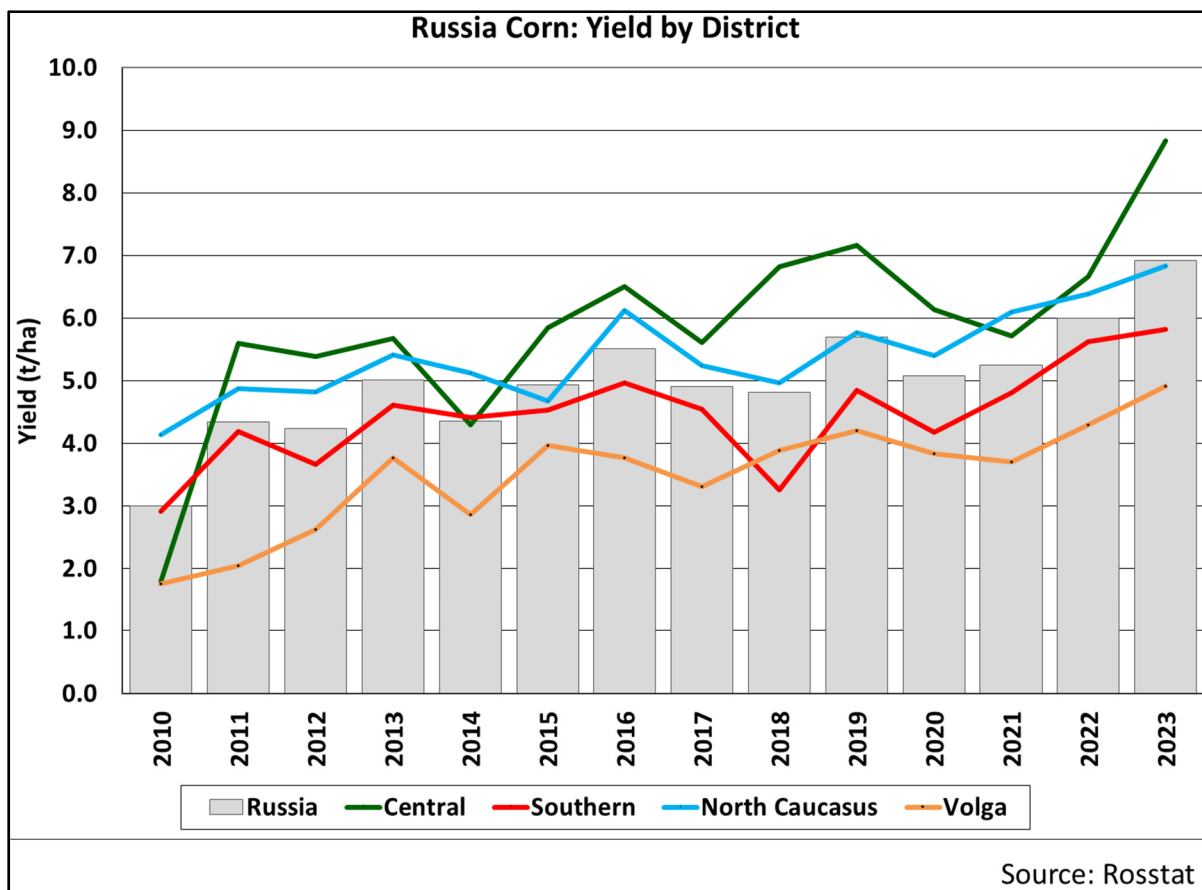
**USDA** Foreign Agricultural Service  
U.S. DEPARTMENT OF AGRICULTURE

Data Source: Rosstat, Average Crop Production 2017-2021; GFSAD 30 m crop cover (2015)

Russia’s Statistical Agency, Rosstat, released its second 2023 estimates for all major crops in late-February 2024. Rosstat reported a record yield for the MY 2023/24 corn crop. In addition, yields mark year-to-year improvements across all major corn producing districts. This season, Russia’s main corn producing regions experienced overall favorable growing conditions. Timely and adequate precipitation provided ample soil moisture reserves during the key yield formation



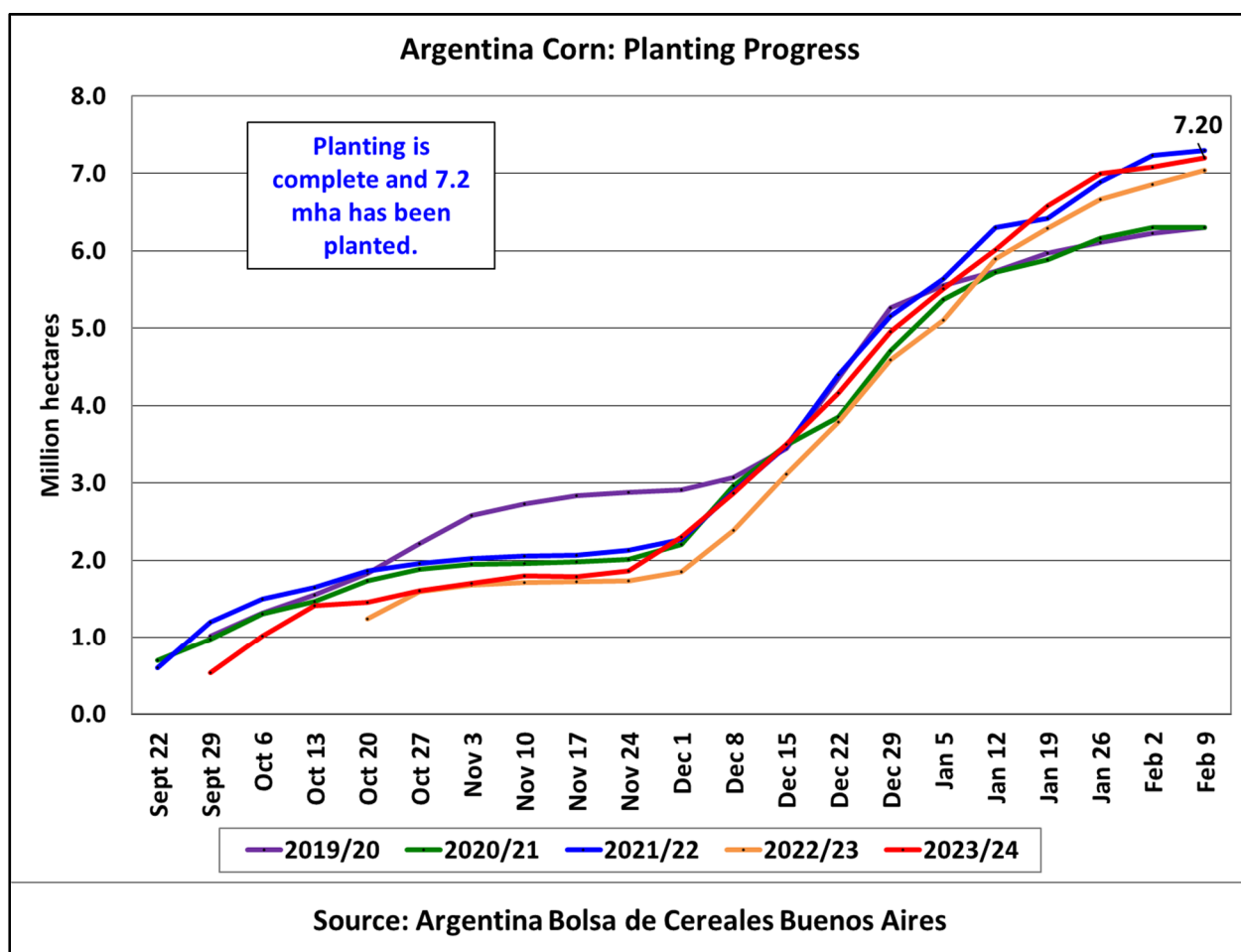
period. As a result, crop vigor remained relatively stable and above average during the entire growing season.



Cold and wet fall weather, however, delayed harvest significantly this year. This late-season weather-related setback caused higher-than-average area abandonment of about 9 percent compared to 4 percent on average, based on the last 5 years of abandonment. (For more information, please contact [Iliana.Mladenova@usda.gov](mailto:Iliana.Mladenova@usda.gov).)

### Argentina Corn: Planted Area Increased

Argentina corn production for marketing year 2023/24 is forecast at 56.0 million metric tons, up 2 percent from last month, and up 56 percent from last year. Corn yield is forecast at 8.00 tons per hectare, up slightly from last month, and up 50 percent from last year's yield. Harvested area is forecast at 7.0 million hectares (mha), up 1 percent from last month, and 4 percent from last year.



Planting occurs from late September until early February but there are two distinct periods; early planted corn that occurs from late September until early December and late-planted corn that occurs from early December until early February. Bolsa de Cereales Buenos Aires increased their planted area forecast to 7.2 mha and average abandonment is 3 percent. Rainfall in the main corn producing provinces has been above average and significantly above last year’s low rainfall levels. High heat occurred in early February, but crop conditions are above average, and the crop still has another month in the critical yield development stage. *(For more information, please contact [Katie.McGaughey@usda.gov](mailto:Katie.McGaughey@usda.gov).)*

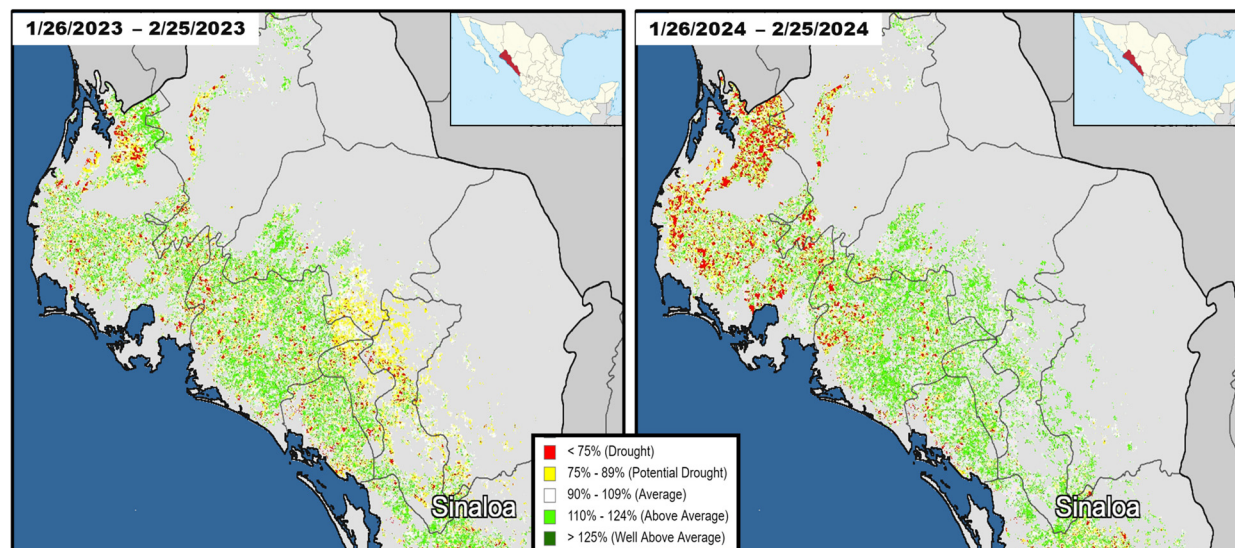
### Mexico Corn: Dryness Reduces Winter Crop Area

USDA estimates marketing year 2023/24 corn production at 24.0 million metric tons, down 4 percent from last month and down 15 percent from last year. Harvested area is estimated at 6.1 million hectares (mha), down 5 percent from last month and 11 percent from last year. Yield is estimated at 3.93 metric tons per hectare, up 1 percent from last month, but down 3 percent from last year.

Mexico corn is planted in two seasons, spring/summer (main) followed by fall/winter, with the bulk of the production occurring in the main season, at 75 percent. The main corn season relies predominantly on rainfall for crop development. Rainfall for the 2023 main corn crop

underperformed throughout the rainy season (April through October). As a result, corn planted area for the main season was one of the lowest on record.

### MODIS Percent Average Seasonal Greenness (PASG 1-Month) in Sinaloa



Source: USDA NASA MODIS Percent of Average Seasonal Greenness (250 meter), ESRI Sentinel-2 non-cropland mask 2020 (10 meter)

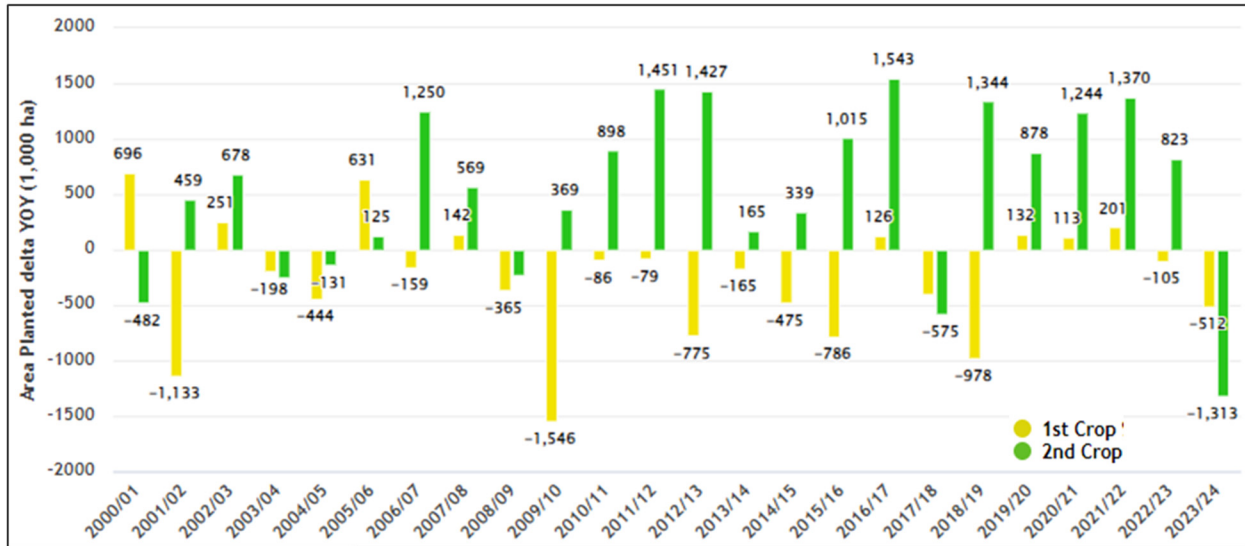
The winter season corn crop, predominantly irrigated, has experienced water supply shortages caused by the drier than normal wet season. As a result, winter corn planting pace continues to be one of the slowest planting periods on record. As of January 31, 2024, SADER/SIAP reported winter season planted area at 0.706 mha, down from 1.059 mha last year. Crop vegetative conditions depicted through the satellite-derived MODIS Normalized Difference Vegetation Index (NDVI) highlights the below average conditions in the northern region of Sinaloa. (For more information, please contact [Justin.Jenkins@usda.gov](mailto:Justin.Jenkins@usda.gov) and [Ifeoma.Collins@usda.gov](mailto:Ifeoma.Collins@usda.gov).)

### Brazil Corn: *Safrinha* Crop Sowing Advances Rapidly and Production Unchanged

Brazil corn production for marketing year (MY) 2023/24 is estimated at 124.0 million metric tons (mmt), unchanged from last month, and lower by 13.0 mmt (9 percent) from last year's record crop. Harvested area for all three corn crops is estimated unchanged from last month at 21.9 million hectares (mha), and lower by 0.5 mha (2 percent) from last year's record. Yield is estimated at 5.66 tons per hectare, 7 percent below the record MY 2022/23 yield, and 2 percent above the 10-year trend yield. Planted area for the second-season crop was reduced drastically this season by market pressures to 15.9 mha (about 7.6 percent lower than last year) according to the *Companhia Nacional de Abastecimento* (CONAB). This is the largest area reduction observed for the Brazilian *safrinha* crop. The state with the largest area reduction is the highest *safrinha* producer, Mato Grosso, where area was reduced by 9 percent or 656,000 hectares.



## Brazil Corn MY 2023/24: First and Second Crops Annual Area Change

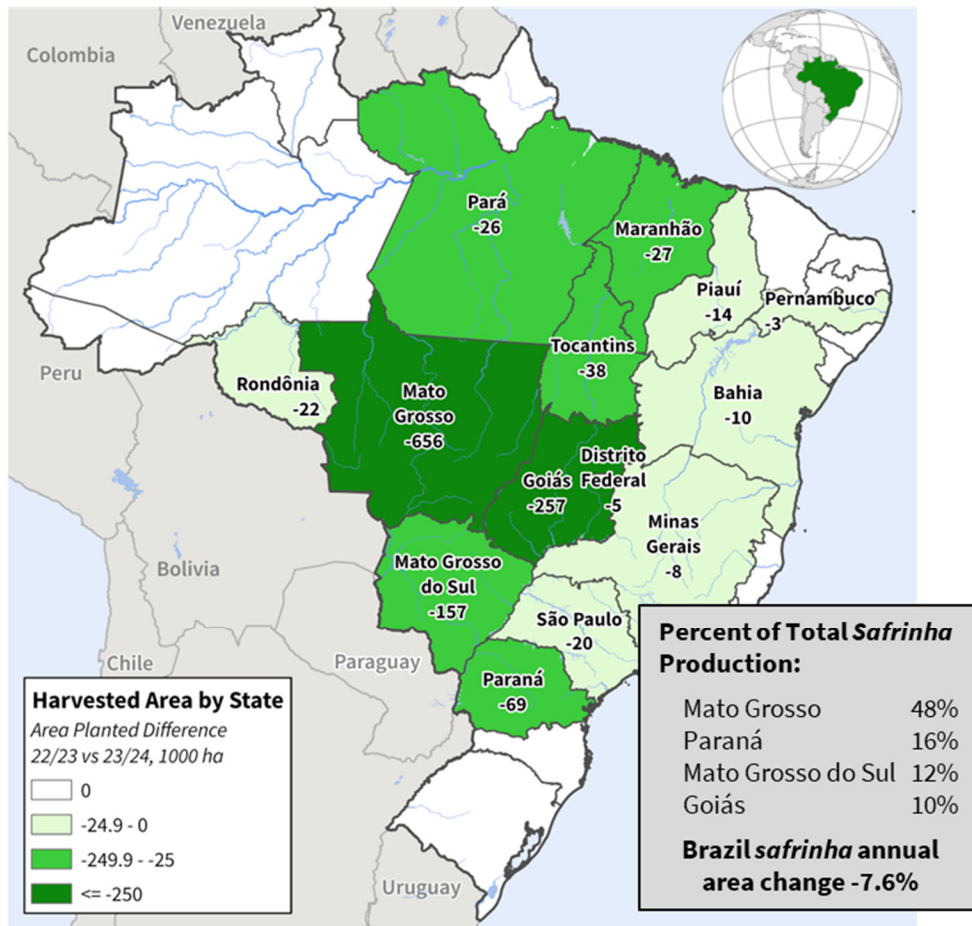


Source: CONAB

- 1<sup>st</sup> crop area decreased -11.5% (-0.512 mha); 5-year average -0.127 mha
- 2<sup>nd</sup> crop area decreased -7.6% (-1.3 mha); 5-year average 0.96 mha

Harvest is underway for the first-season crop (19 percent of total production) and is about 29 percent complete in early March, compared to 23 percent at this time last season. Planted area for the first-season crop is reported at 3.9 mha (11.5 percent smaller than last year) and production is at 23.6 mmt (almost 14 percent below last year's production), as reported by CONAB. State level reporting from Paraná shows a slightly larger production, but yield was reduced by 13 percent from the initial estimate. In southern Brazil, yield was reduced due to excessive rains during pollination stages.

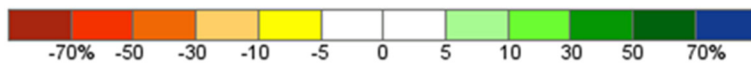
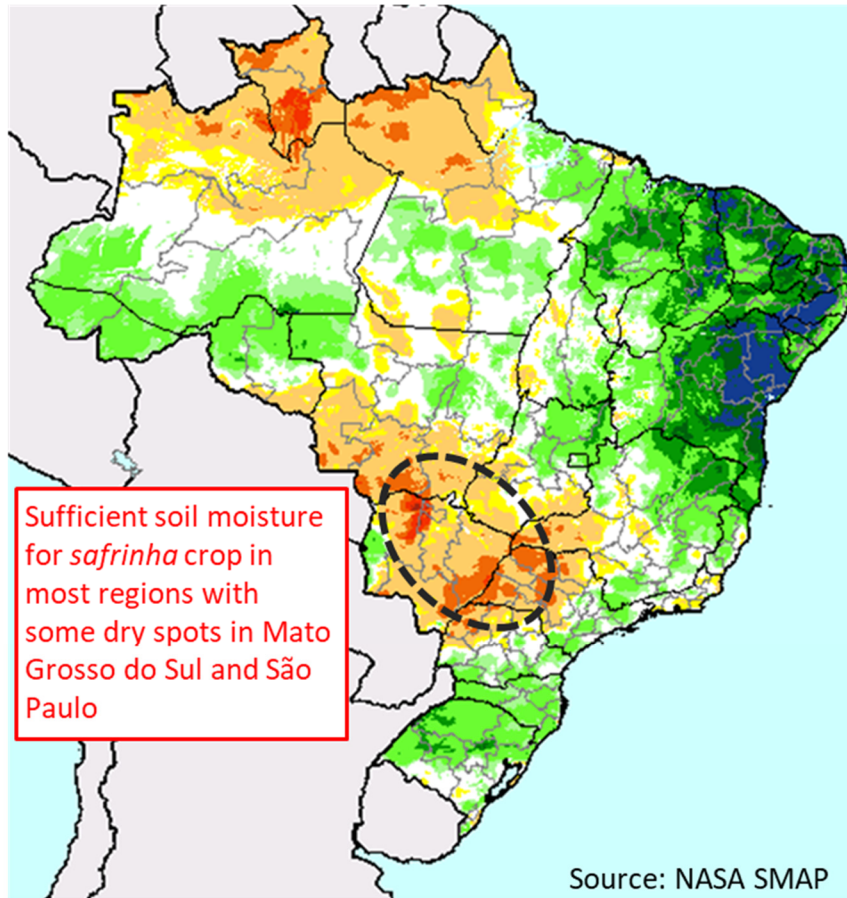
## Brazil 2<sup>nd</sup> Corn Crop: Annual Area Change from MY 2022/23 to MY 2023/24



Source: CONAB Production Statistics

Planting for the second-season crop (78 percent of total production) is progressing at a rapid pace in several center-west and southern states. Overall sowing is ahead of the 5-year pace at 74 percent nationally compared to 64 percent last season. The *Instituto Mato-Grossense de Economia Agropecuária* (IMEA) reports 90 percent of the area has been sown for the state of Mato Grosso for MY 2023/24, tracking ahead of the 5-year average. Roughly 90 percent of the crop in Mato Grosso was sown within the ideal window per IMEA. In the second largest *safrinha* producer, Paraná, sowing is currently at 66 percent, well ahead of the 5-year average of 44 percent.

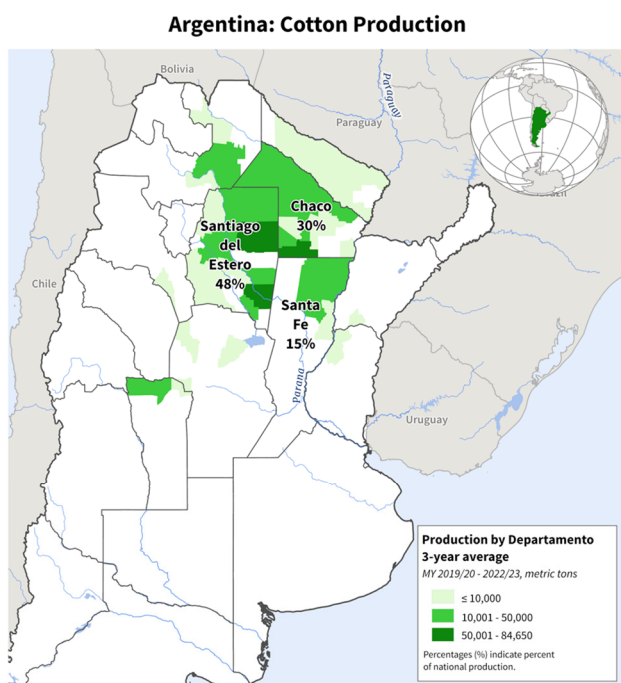
**SMAP Root Zone (0-100 cm) Soil Moisture Anomaly (%), February 29, 2024**



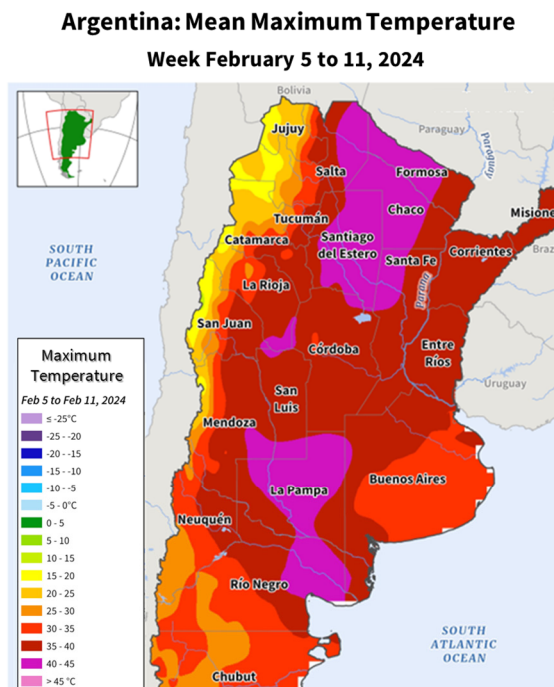
Soil moisture conditions are favorable in most states except for some localized areas in the state of Mato Grosso do Sul. Planting will continue through March in the center-west and south and through May in the northeastern states. The peak harvest period ranges from June to August. (For more information, please contact [Sunita.Yadav-Pauletti@usda.gov](mailto:Sunita.Yadav-Pauletti@usda.gov).)



## Argentina Cotton: High Heat and Dryness Lowers Yield



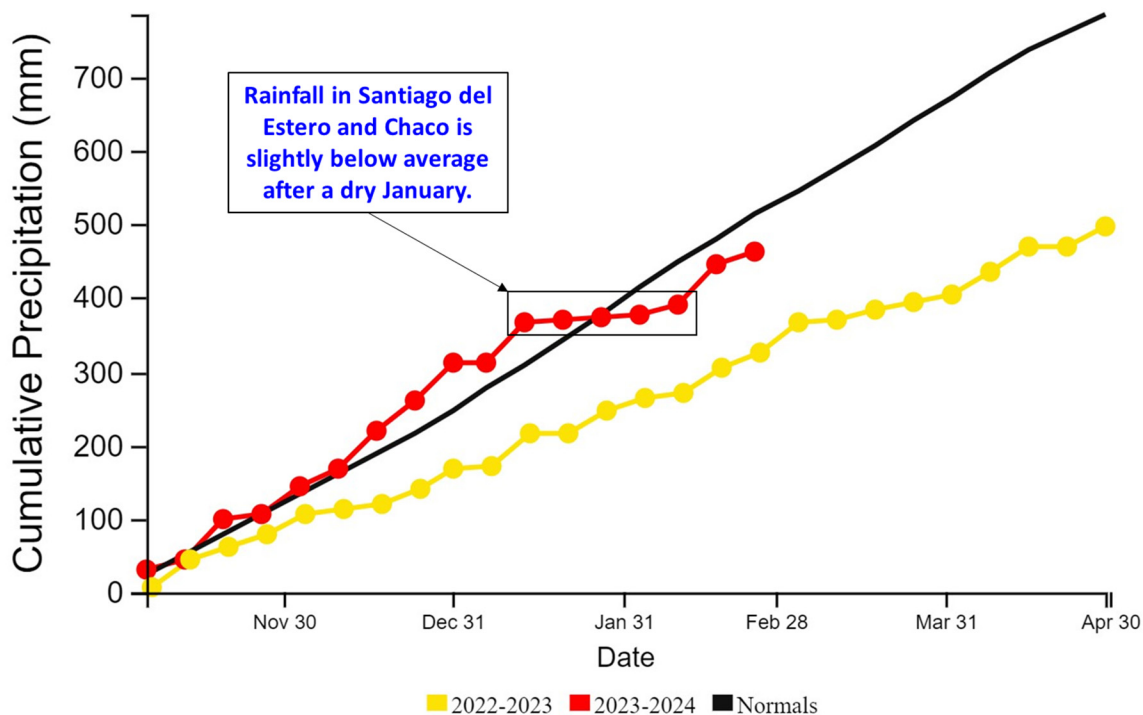
Source: Argentina Ministerio de Agroindustria



Source: NOAA Climate Prediction Center Temperature Data

Argentina cotton production for marketing year (MY) 2023/24 is forecast at 1.60 million 480-lb bales, down 6 percent from last month, but up 37 percent from last year. Cotton production is forecast as the second highest, after the record in MY 1995/96. Cotton yield is forecast at 622 kilograms per hectare, down 6 percent from last month, but up 26 percent from last year. Harvested area is forecast at 560,000 hectares (ha), unchanged from last month, but up 9 percent from last year.

### Cumulative Precipitation in Santiago del Estero and Chaco



Source: WMO Station Data (weekly)

The Argentina Ministry of Agriculture published an updated planted area forecast of 600,000 ha. Abandonment for cotton is, on average, 6 percent, excluding the unusually high abandonment in MY 2018/19. Planting began in mid-October and is complete as of late January. The month-to-month decrease in yield is due to above-average temperatures in early February that occurred in Santiago del Estero (48 percent of production), Chaco (30 percent), and Santa Fe (15 percent). This period of high temperatures was preceded by a month of dryness. (For more information, please contact [Katie.McGaughey@usda.gov](mailto:Katie.McGaughey@usda.gov).)



**World Agricultural Production  
U.S. Department of Agriculture**

Foreign Agricultural Service / Global Market Analysis  
International Production Assessment Division (IPAD)  
Ag Box 1051, Room 4630, South Building  
Washington, DC 20250-1051

<https://ipad.fas.usda.gov/>

Telephone: (202) 720-1662 Fax: (202) 720-1158

This report uses information from the Foreign Agricultural Service’s (FAS) global network of agricultural attachés and counselors, official statistics of foreign governments and other foreign source materials, and the analysis of economic data and satellite imagery. Estimates of foreign area, yield, and production are from the International Production Assessment Division, FAS, and are reviewed by USDA’s Inter-Agency Commodity Estimates Committee. Estimates of U.S. area, yield, and production are from USDA’s National Agricultural Statistics Service. Numbers within the report may not add to totals because of rounding. This report reflects official USDA estimates released in the World Agricultural Supply and Demand Estimates (WASDE-584), March 8, 2024.

**Printed copies are available from the National Technical Information Service. Download an order form at [http://www.ntis.gov/products/specialty/usda/fas\\_a-g.asp](http://www.ntis.gov/products/specialty/usda/fas_a-g.asp), or call NTIS at 1-800-363-2068.**

The FAS International Production Assessment Division prepared this report. The next issue of World Agricultural Production will be released after 12:00 p.m. Eastern Time, April 11, 2024.

**Conversion Table**

Metric tons to bushels

Wheat, soybeans	=	MT * 36.7437
Corn, sorghum, rye	=	MT * 39.36825
Barley	=	MT * 45.929625
Oats	=	MT * 68.894438

Metric tons to 480-lb bales

Cotton	=	MT * 4.592917
--------	---	---------------

Metric tons to hundredweight

Rice	=	MT * 22.04622
------	---	---------------

Area & weight

1 hectare	=	2.471044 acres
1 kilogram	=	2.204622 pounds





For further information, contact:  
**U.S. Department of Agriculture**  
**Foreign Agricultural Service**  
**Global Market Analysis**  
International Production Assessment Division  
Ag Box 1051, Room 4630, South Building  
Washington, DC 20250-1051

Telephone: (202) 720-1662

Fax: (202) 720-1158

---

## **GENERAL INFORMATION**

Senior Director	Ronald Frantz	202-720-4056	ronald.frantz@usda.gov
Director	Robert Tetrault	202-720-1071	robert.tetrault@usda.gov
Administrative Assistant	Vacant		
USDA Remote Sensing Advisor	Vacant		
Sr. Analyst/Technical Lead	Curt Reynolds, Ph.D.	202-690-0134	curt.reynolds@usda.gov
Sr. Analyst/ Satellite Imagery Archives Manager/Technical Lead	Dath Mita, Ph.D.	202-720-7339	dath.mita@usda.gov
Sr. Analyst/Technical Lead	Jim Crutchfield	202-690-0135	james.crutchfield@usda.gov
GIS Mapping/Imagery Analyst	Lisa Colson	202-720-6652	lisa.colson@usda.gov
WAP Coordinators	Ifeoma Collins	202-720-0240	ifeoma.collins@usda.gov
	Shannon Moyo		shannon.moyo@usda.gov

## **COUNTRY- AND REGION-SPECIFIC INFORMATION**

South America, Argentina, Venezuela, and Colombia	Katie McGaughey	202-720-9210	katie.mcgaughey@usda.gov
Western and Central Europe, and North Africa	Bryan Purcell	202-690-0138	bryan.purcell@usda.gov
Russia, Ukraine, Kazakhstan, Moldova, and Belarus	Iliana Mladenova, Ph.D.	202-690-2315	iliana.mladenova@usda.gov
South Asia, Sri Lanka Bangladesh, India, and Nepal	Arnella Trent	202-720-0881	arnella.trent@usda.gov
East Asia, China, and Japan	Dath Mita, Ph.D.	202-720-7339	dath.mita@usda.gov
Sub-Saharan Africa, Nigeria and South Africa	Curt Reynolds, Ph.D.	202-690-0134	curt.reynolds@usda.gov
S.E. Asia, Indonesia, Thailand, Malaysia, Cambodia and Vietnam	Justin Jenkins	202-720-0419	justin.jenkins@usda.gov
Central America, Mexico, and Western United States	Ifeoma Collins	202-720-0240	ifeoma.collins@usda.gov
Australia, New Zealand, Pakistan Papua New Guinea and South Pacific Islands	Jim Crutchfield	202-690-0135	james.crutchfield@usda.gov
Middle East, Central Asia, Afghanistan Iraq, Iran, and Syria	Aaron Mulhollen	202-690-0131	aaron.mulhollen@usda.gov
Canada, Caribbean, Eastern United States	Shannon Moyo		shannon.moyo@usda.gov
Brazil	Sunita Yadav-Pauletti, Ph.D.		sunita.yadav-pauletti@usda.gov



The Foreign Agricultural Service (FAS) updates its production, supply and distribution (PSD) database for cotton, oilseeds, and grains at 12:00 p.m. on the day the *World Agricultural Supply and Demand Estimates* (WASDE) report is released. This circular is released by 12:15 p.m.

## FAS Reports and Databases:

### World Agricultural Production

Current: <https://www.fas.usda.gov/data/world-agricultural-production>

Archive: <https://usda.library.cornell.edu/concern/publications/5q47rn72z?locale=en>

USDA's Foreign Agricultural Service (FAS) publishes a monthly report on crop acreage, yield and production in major countries worldwide. Sources include reporting from FAS's worldwide offices, official statistics of foreign governments, and analysis of economic data and satellite imagery. The reports reflect official USDA estimates released in the monthly *World Agricultural Supply and Demand Estimates* (WASDE).

### World Markets and Trade

Current: <https://www.fas.usda.gov/data>

Archive:

[https://usda.library.cornell.edu/catalog?f%5Bmember\\_of\\_collections\\_ssim%5D%5B%5D=Foreign+Agricultural+Service&locale=en](https://usda.library.cornell.edu/catalog?f%5Bmember_of_collections_ssim%5D%5B%5D=Foreign+Agricultural+Service&locale=en)

USDA's Foreign Agricultural Service (FAS) publishes monthly and quarterly reports which include data on U.S. and global trade, production, consumption and stocks, as well as analysis of developments affecting world trade in oilseeds, grains, cotton, livestock and poultry. The reports reflect official USDA estimates released in the monthly *World Agricultural Supply and Demand Estimates* (WASDE).

### Global Agricultural Information Network (GAIN)

<https://gain.fas.usda.gov/>

USDA's Foreign Agricultural Service (FAS) provides timely reports on foreign markets through the Global Agriculture Information Network (GAIN) database. An average of 2,000 reports are added each year, with reports going back to 1995. GAIN reports are compiled by FAS' global market intelligence network, which includes FAS foreign service officers and locally engaged staff in over 90 overseas offices world-wide. They provide on-the-ground intelligence, insight, and analysis on nearly 200 countries, delivering information on foreign agricultural markets, crop conditions, and agro-political dynamics of interest to U.S. agriculture. GAIN reports contain assessments of commodity and trade issues made by USDA staff and are not necessarily statements of official U.S. government policy.

### Production, Supply and Distribution (PS&D) Online

<https://apps.fas.usda.gov/psdonline/app/index.html#/app/home>

PSD Online is the public repository for USDA's Official Production, Supply and Distribution forecast data and reports for key agricultural commodities. PSD Online data are reviewed and updated monthly by an interagency committee chaired by USDA's World Agricultural Outlook Board (WAOB). The committee consist of representatives from Foreign Agricultural Service (FAS), the Economic Research Service (ERS), the Farm Service Agency (FSA), and the Agricultural Marketing Service (AMS).

### EU Countries and Russia Wheat: Area and Production Estimates

<https://apps.fas.usda.gov/psdonline/app/index.html#/app/downloads> (click on PSD Datasets)

USDA's Foreign Agricultural Service (FAS) provides country-level area and production estimates for the nations of the European Union. For Russia, country-level area and production estimates are provided for Winter and Spring wheat. These datasets are reviewed and updated monthly by an interagency committee chaired by USDA's World Agricultural Outlook Board (WAOB) and can be downloaded through PSD datasets on PSD Online.



## FAS Reports and Databases:

### **International Production Assessment (IPAD)**

<https://ipad.fas.usda.gov/>

USDA's Foreign Agricultural Service (FAS) maintains a dynamic global crop production portal with key information including *World Agricultural Production* (WAP) briefs, Commodity Intelligence Reports (CIR), geospatial applications, crop production maps at a subnational level and crop calendars for the top-20 producing countries. Additionally, Crop Explorer (<https://ipad.fas.usda.gov/cropexplorer/>) displays rainfall, temperature, evapotranspiration, soil moisture, snow cover, and vegetation conditions in charts and maps.

### **USDA and NASA Global Agricultural Monitoring (GLAM)**

<https://glam1.gsfc.nasa.gov/>

The USDA and NASA Global Agricultural Monitoring (GLAM) system provides near real-time and science quality Moderate Resolution Imaging Spectroradiometer (MODIS) Normalized Difference Vegetation Index (NDVI) from the satellites Terra and Aqua. The public can view and retrieve MODIS 8-day composited, global NDVI satellite imagery and time series data. GLAM was developed by NASA's Global Inventory Modeling and Mapping Studies (GIMMS) group for USDA's Foreign Agricultural Service.

### **Global Agricultural and Disaster Assessment System (GADAS)**

<https://geo.fas.usda.gov/GADAS/index.html>

USDA's Foreign Agricultural Service (FAS) provides the Global Agricultural and Disaster Assessment System (GADAS), a web-based Geographic Information System (GIS) tool which integrates a vast array of highly detailed earth observation data streams, particularly targeted towards agricultural and disaster assessment analysis. GADAS is an interactive website which provides analysts with a wide variety of routine geospatial products (maps, charts, tables) they require for comprehensive situational investigations and recurring assessments.

### **Export Sales Reporting**

<https://apps.fas.usda.gov/esrquery/>

USDA's Export Sales Reporting Program monitors U.S. agricultural export sales on a daily and weekly basis. Export sales reporting provides a constant stream of up-to-date market information for 40 U.S. agricultural commodities sold abroad. The weekly U.S. Export Sales report is the most currently available source of U.S. exports sales data. The data is used to analyze overall levels of export demand, determine where markets exit, and assess the relative position of U.S. commodities in foreign markets.

### **Global Agricultural Trade System (GATS)**

<https://apps.fas.usda.gov/gats/default.aspx>

The Global Agricultural Trade System (GATS) is a searchable database containing monthly U.S. Census Bureau trade data organized by agricultural commodity and agricultural related product groups. Trade data is searchable by partner countries and partner groups. Historical U.S. agricultural trade data is available back to 1967. In addition, U.N. trade statistics (UN Comtrade) may be queried through GATS. UN trade data is available for nearly 200 countries or areas, dating from the inception of the Harmonized System (HS) of trade codes in 1989 to present. The database is continuously updated. U.S. trade data is updated monthly according to the U.S. Census Bureau's reporting system. UN Comtrade data are updated in GATS after nationally submitted data to the UN are standardized by the UN Statistical Division and added to the UN Comtrade database.

### **Other USDA Reports:**

World Agricultural Supply and Demand Estimates (WASDE):

<http://www.usda.gov/oce/commodity/wasde/>

Economic Research Service:

<http://www.ers.usda.gov/topics/crops>

National Agricultural Statistics Service:

<http://www.nass.usda.gov/Publications/>

**Table 01 World Crop Production Summary**

Million Metric Tons

Commodity	World -	Total Foreign	North America			Former Soviet		European	Asia (WAP)					South America		Selected Other			All Others
			United States	Canada -	Mexico -	Russia -	Ukraine -		China -	India -	Indonesia	Pakistan	Thailand	Argentina	Brazil -	Australia	South Africa	Turkey -	
---Million metric tons---																			
<b>Wheat</b>																			
2021/22	780.1	735.2	44.8	22.4	3.3	75.2	33.0	nr	136.9	109.6	0.0	27.5	0.0	22.2	7.7	36.2	2.3	16.0	243.0
2022/23 prel.	789.2	744.3	44.9	34.3	3.6	92.0	21.5	nr	137.7	104.0	0.0	26.4	0.0	12.6	10.6	40.5	2.1	17.3	241.7
2023/24 proj.																			
Feb	785.7	736.4	49.3	32.0	3.5	91.0	23.4	nr	136.6	110.6	0.0	28.0	0.0	15.5	8.1	25.5	2.2	19.5	240.7
Mar	786.7	737.4	49.3	32.0	3.5	91.5	23.4	nr	136.6	110.6	0.0	28.0	0.0	15.9	8.1	26.0	2.2	19.5	240.2
<b>Coarse Grains</b>																			
2021/22	1,500.5	1,104.2	396.3	25.1	32.8	38.5	53.5	nr	281.0	51.4	12.7	11.0	5.4	58.6	120.6	19.2	16.6	11.5	366.3
2022/23 prel.	1,446.0	1,089.6	356.4	30.5	33.9	44.1	33.9	nr	284.5	56.8	12.9	9.9	5.3	42.8	141.6	18.8	17.5	14.8	342.2
2023/24 proj.																			
Feb	1,510.1	1,107.2	402.9	27.2	30.4	42.9	37.6	nr	297.1	54.0	12.9	11.0	5.5	63.3	129.3	13.3	17.4	17.0	348.3
Mar	1,507.4	1,104.5	402.9	27.2	29.2	42.5	36.6	nr	297.1	54.0	12.9	11.0	5.5	64.3	129.3	14.3	16.0	17.0	347.4
<b>Rice, Milled</b>																			
2021/22	513.1	507.0	6.1	0.0	0.2	0.7	0.0	nr	149.0	129.5	34.4	9.3	19.9	0.8	7.3	0.5	0.0	0.5	154.9
2022/23 prel.	514.6	509.5	5.1	0.0	0.1	0.6	0.0	nr	145.9	135.8	34.0	7.3	20.9	0.8	6.8	0.4	0.0	0.6	156.3
2023/24 proj.																			
Feb	513.7	506.8	6.9	0.0	0.2	0.7	0.0	nr	144.6	132.0	33.5	9.0	20.0	0.9	7.5	0.5	0.0	0.5	157.4
Mar	515.4	508.5	6.9	0.0	0.2	0.7	0.0	nr	144.6	134.0	33.5	9.0	20.0	0.9	7.5	0.4	0.0	0.5	157.2
<b>Total Grains</b>																			
2021/22	2,793.7	2,346.5	447.2	47.5	36.2	114.4	86.6	nr	566.9	290.4	47.1	47.8	25.2	81.6	135.7	56.0	18.9	28.0	764.2
2022/23 prel.	2,749.8	2,343.3	406.4	64.9	37.6	136.7	55.4	nr	568.2	296.5	46.9	43.6	26.2	56.1	159.0	59.8	19.6	32.7	740.1
2023/24 proj.																			
Feb	2,809.6	2,350.4	459.1	59.1	34.0	134.7	61.0	nr	578.4	296.6	46.4	48.0	25.5	79.6	144.9	39.4	19.6	37.0	746.4
Mar	2,809.5	2,350.4	459.1	59.1	32.8	134.7	60.0	nr	578.4	298.6	46.4	48.0	25.5	81.0	144.9	40.7	18.2	37.1	744.9
<b>Oilseeds</b>																			
2021/22	611.8	480.4	131.3	20.5	0.9	23.1	24.3	nr	62.1	43.2	14.3	3.3	1.0	49.9	135.2	8.7	3.4	3.5	87.2
2022/23 prel.	637.3	511.5	125.8	25.3	0.9	26.6	19.8	nr	67.9	42.4	15.0	2.7	1.0	31.5	167.0	10.1	3.8	4.0	93.6
2023/24 proj.																			
Feb	659.4	537.0	122.4	25.9	0.6	28.0	24.0	nr	67.3	41.2	15.1	3.8	1.0	56.1	161.9	7.0	3.8	3.1	98.1
Mar	658.7	536.3	122.4	25.9	0.6	28.1	24.1	nr	67.3	41.9	15.1	3.8	1.0	56.1	160.9	7.0	3.2	3.1	98.2
<b>Cotton</b>																			
2021/22	114.5	97.0	17.5	0.0	1.2	0.0	0.0	1.7	26.8	24.3	0.0	6.0	0.0	1.5	10.8	5.9	0.1	3.8	15.0
2022/23 prel.	116.3	101.8	14.5	0.0	1.6	0.0	0.0	1.6	30.7	26.3	0.0	3.9	0.0	1.2	11.7	5.8	0.1	4.9	14.0
2023/24 proj.																			
Feb	112.8	100.4	12.4	0.0	0.9	0.0	0.0	1.1	27.5	25.0	0.0	6.7	0.0	1.7	14.6	4.8	0.1	3.2	14.9
Mar	113.0	100.9	12.1	0.0	0.9	0.0	0.0	1.1	27.5	25.5	0.0	6.7	0.0	1.6	14.6	4.8	0.1	3.2	14.9

1/ Includes wheat, coarse grains, and rice (milled) shown above.

**Table 02 Wheat Area, Yield, and Production**

Country / Region	Area (Million hectares)				Yield (Metric tons per hectare)				Production (Million metric tons)				Change in Production			
	2021/22	Prel.	2023/24 Proj.		2021/22	Prel.	2023/24 Proj.		2021/22	Prel.	2023/24 Proj.		From last month		From last year	
		2022/23	Feb	Mar		2022/23	Feb	Mar		2022/23	Feb	Mar	MMT	Percent	MMT	Percent
<b>World</b>	221.66	219.53	222.69	222.75	3.52	3.59	3.53	3.53	780.05	789.17	785.74	786.70	0.96	0.12	-2.47	-0.31
<b>United States</b>	15.03	14.36	15.08	15.08	2.98	3.13	3.27	3.27	44.80	44.90	49.31	49.31	0.00	0.00	4.42	9.84
<b>Total Foreign</b>	206.63	205.17	207.60	207.67	3.56	3.63	3.55	3.55	735.25	744.28	736.43	737.39	0.96	0.13	-6.89	-0.93
<b>European Union</b>	24.29	24.38	24.22	24.22	5.69	5.50	5.53	5.52	138.16	134.19	134.00	133.65	-0.35	-0.26	-0.54	-0.40
<b>United Kingdom</b>	1.79	1.81	1.73	1.73	7.81	8.59	8.12	8.12	13.99	15.54	14.00	14.00	0.00	0.00	-1.54	-9.91
<b>Serbia</b>	0.60	0.62	0.73	0.68	5.71	5.16	4.97	5.06	3.40	3.20	3.60	3.45	-0.15	-4.19	0.25	7.78
<b>China</b>	23.57	23.52	23.63	23.63	5.81	5.86	5.78	5.78	136.95	137.72	136.59	136.59	0.00	0.00	-1.13	-0.82
<b>South Asia</b>																
India	31.13	30.46	31.40	31.40	3.52	3.41	3.52	3.52	109.59	104.00	110.55	110.55	0.00	0.00	6.55	6.30
Pakistan	9.17	9.00	8.86	8.86	3.00	2.93	3.16	3.16	27.46	26.40	28.00	28.00	0.00	0.00	1.60	6.06
Afghanistan	2.05	1.86	2.35	2.35	1.96	2.05	2.20	2.20	4.02	3.80	5.17	5.17	0.00	0.00	1.37	35.98
Nepal	0.72	0.72	0.72	0.72	2.99	2.98	2.90	2.90	2.15	2.15	2.09	2.09	0.00	0.00	-0.06	-2.56
<b>Former Soviet Union - 12</b>																
Russia	27.63	29.00	28.80	28.83	2.72	3.17	3.16	3.17	75.16	92.00	91.00	91.50	0.50	0.55	-0.50	-0.54
Russia Winter	15.22	16.30	15.30	15.27	3.43	4.17	4.18	4.19	52.19	68.00	64.00	64.00	0.00	0.00	-4.00	-5.88
Russia Spring	12.41	12.70	13.50	13.56	1.85	1.89	2.00	2.03	22.96	24.00	27.00	27.50	0.50	1.85	3.50	14.58
Ukraine	7.41	5.60	5.05	5.05	4.45	3.84	4.63	4.63	33.01	21.50	23.40	23.40	0.00	0.00	1.90	8.84
Kazakhstan	12.72	12.81	13.13	13.13	0.93	1.28	0.92	0.92	11.81	16.40	12.11	12.11	0.00	0.00	-4.29	-26.17
Uzbekistan	1.24	1.26	1.40	1.40	4.83	4.99	4.62	4.62	5.99	6.27	6.46	6.46	0.00	0.00	0.19	3.06
Belarus	0.65	0.68	0.68	0.68	3.54	3.48	3.38	3.38	2.30	2.35	2.30	2.30	0.00	0.00	-0.05	-2.13
<b>Canada</b>	9.20	10.08	10.68	10.68	2.44	3.41	2.99	2.99	22.42	34.34	31.95	31.95	0.00	0.00	-2.38	-6.93
<b>South America</b>																
Argentina	6.55	5.50	5.50	5.60	3.38	2.28	2.82	2.84	22.15	12.55	15.50	15.90	0.40	2.58	3.35	26.69
Brazil	2.74	3.09	3.47	3.47	2.81	3.43	2.33	2.33	7.70	10.60	8.10	8.10	0.00	0.00	-2.50	-23.58
<b>Australia</b>	12.73	13.05	12.50	12.50	2.85	3.11	2.04	2.08	36.24	40.55	25.50	26.00	0.50	1.96	-14.55	-35.87
<b>Africa</b>																
Egypt	1.44	1.45	1.35	1.35	6.85	6.55	6.57	6.57	9.84	9.50	8.87	8.87	0.00	0.00	-0.63	-6.63
Morocco	2.87	2.44	2.50	2.50	2.63	1.11	1.66	1.66	7.54	2.71	4.16	4.16	0.00	0.00	1.45	53.62
Algeria	1.80	1.80	1.80	1.80	1.39	2.00	1.50	1.50	2.50	3.60	2.70	2.70	0.00	0.00	-0.90	-25.00
Ethiopia	1.95	1.90	1.86	1.86	2.83	3.05	2.80	2.80	5.52	5.80	5.20	5.20	0.00	0.00	-0.60	-10.34
<b>Middle East</b>																
Turkey	7.05	6.80	7.20	7.20	2.27	2.54	2.71	2.71	16.00	17.25	19.50	19.50	0.00	0.00	2.25	13.04
Iran	6.00	6.20	6.20	6.20	2.00	2.13	2.26	2.26	12.00	13.20	14.00	14.00	0.00	0.00	0.80	6.06
Iraq	2.00	2.10	2.60	2.60	1.75	1.52	2.00	2.00	3.50	3.20	5.20	5.20	0.00	0.00	2.00	62.50
Syria	1.57	1.18	1.20	1.20	1.25	1.31	2.00	2.00	1.95	1.55	2.40	2.40	0.00	0.00	0.85	54.64
<b>Mexico</b>	0.55	0.59	0.56	0.56	6.00	6.07	6.23	6.23	3.28	3.57	3.46	3.46	0.00	0.00	-0.12	-3.28
<b>Others</b>	7.25	7.28	7.50	7.47	2.85	2.79	2.75	2.77	20.63	20.35	20.61	20.67	0.06	0.30	0.33	1.61



**Table 03 Total Coarse Grain Area, Yield, and Production**

Country / Region	Area (Million hectares)				Yield (Metric tons per hectare)				Production (Million metric tons)				Change in Production			
	Prel.		2023/24 Proj.		Prel.		2023/24 Proj.		Prel.		2023/24 Proj.		From last month		From last year	
	2021/22	2022/23	Feb	Mar	2021/22	2022/23	Feb	Mar	2021/22	2022/23	Feb	Mar	MMT	Percent	MMT	Percent
<b>World</b>	343.86	335.04	338.68	338.55	4.36	4.32	4.46	4.45	1,500.50	1,446.02	1,510.08	1,507.41	-2.67	-0.18	61.39	4.25
<b>United States</b>	38.21	35.18	38.99	38.99	10.37	10.13	10.33	10.33	396.30	356.45	402.89	402.89	0.00	0.00	46.44	13.03
<b>Total Foreign</b>	305.65	299.87	299.70	299.57	3.61	3.63	3.69	3.69	1,104.20	1,089.57	1,107.19	1,104.52	-2.67	-0.24	14.95	1.37
<b>China</b>	45.80	45.55	46.65	46.65	6.13	6.25	6.37	6.37	280.99	284.50	297.14	297.14	0.00	0.00	12.64	4.44
<b>European Union</b>	27.70	26.56	25.88	25.88	5.59	5.01	5.21	5.21	154.84	133.04	134.78	134.78	0.00	0.00	1.74	1.31
<b>United Kingdom</b>	1.43	1.34	1.36	1.36	5.88	6.46	5.96	5.96	8.41	8.67	8.13	8.13	0.00	0.00	-0.54	-6.25
<b>South America</b>																
Brazil	23.37	24.10	23.77	23.77	5.16	5.88	5.44	5.44	120.62	141.60	129.33	129.33	0.00	0.00	-12.28	-8.67
Argentina	9.62	9.19	9.28	9.38	6.10	4.66	6.82	6.85	58.64	42.84	63.28	64.28	1.00	1.58	21.44	50.05
<b>Former Soviet Union - 12</b>																
Russia	14.01	13.60	13.10	12.88	2.75	3.25	3.28	3.30	38.54	44.13	42.94	42.54	-0.40	-0.93	-1.59	-3.61
Ukraine	8.66	6.32	6.02	5.82	6.18	5.37	6.25	6.30	53.51	33.93	37.62	36.62	-1.00	-2.66	2.70	7.94
Kazakhstan	2.63	2.63	2.87	2.87	1.43	1.79	1.40	1.40	3.76	4.71	4.01	4.01	0.00	0.00	-0.71	-14.96
Belarus	0.99	1.03	1.05	1.05	3.05	3.11	3.09	3.09	3.00	3.20	3.23	3.23	0.00	0.00	0.03	0.94
<b>Africa</b>																
Nigeria	13.70	13.50	13.40	13.40	1.56	1.59	1.54	1.54	21.40	21.51	20.70	20.70	0.00	0.00	-0.81	-3.75
South Africa	3.19	3.13	3.20	3.20	5.22	5.61	5.43	5.02	16.64	17.53	17.37	16.03	-1.34	-7.71	-1.50	-8.55
Tanzania	5.74	5.30	5.30	5.30	1.47	1.36	1.36	1.36	8.45	7.23	7.23	7.23	0.00	0.00	0.00	0.00
Burkina Faso	4.20	4.20	4.20	4.20	1.00	1.13	1.13	1.13	4.20	4.73	4.75	4.75	0.00	0.00	0.02	0.38
Ethiopia	5.60	5.42	5.65	5.65	3.10	3.18	3.24	3.24	17.37	17.20	18.30	18.30	0.00	0.00	1.10	6.38
Egypt	1.11	1.10	1.12	1.12	7.48	7.52	7.17	7.17	8.29	8.28	8.04	8.04	0.00	0.00	-0.24	-2.92
Mali	5.16	4.80	4.80	4.80	1.23	1.49	1.42	1.42	6.34	7.15	6.80	6.80	0.00	0.00	-0.35	-4.87
<b>India</b>	22.84	23.90	24.63	24.63	2.25	2.38	2.19	2.19	51.39	56.78	54.01	54.01	0.00	0.00	-2.76	-4.87
<b>Southeast Asia</b>																
Indonesia	3.90	3.95	4.00	4.00	3.26	3.27	3.23	3.23	12.70	12.90	12.90	12.90	0.00	0.00	0.00	0.00
Philippines	2.56	2.50	2.57	2.50	3.26	3.32	3.23	3.32	8.34	8.30	8.30	8.30	0.00	0.00	0.00	0.00
Vietnam	0.90	0.89	0.83	0.83	4.92	4.99	4.94	4.94	4.45	4.42	4.10	4.10	0.00	0.00	-0.32	-7.30
Thailand	1.23	1.21	1.28	1.28	4.36	4.35	4.27	4.27	5.35	5.25	5.45	5.45	0.00	0.00	0.20	3.81
<b>Mexico</b>	8.88	8.64	8.04	7.70	3.69	3.92	3.78	3.79	32.79	33.88	30.36	29.19	-1.17	-3.85	-4.69	-13.85
<b>Canada</b>	5.91	5.74	5.24	5.24	4.25	5.32	5.19	5.19	25.12	30.54	27.16	27.16	0.00	0.00	-3.37	-11.04
<b>Australia</b>	6.69	5.69	5.63	5.63	2.87	3.31	2.37	2.55	19.22	18.84	13.34	14.34	1.00	7.49	-4.50	-23.87
<b>Middle East</b>																
Turkey	4.48	4.57	4.57	4.59	2.56	3.25	3.72	3.72	11.48	14.84	16.97	17.05	0.08	0.44	2.21	14.87
Iran	1.91	1.86	1.86	1.86	2.16	2.38	2.38	2.38	4.12	4.42	4.42	4.42	0.00	0.00	0.00	-0.02
<b>Others</b>	73.45	73.18	73.43	74.01	1.69	1.63	1.72	1.70	124.26	119.16	126.55	125.71	-0.84	-0.66	6.54	5.49

World and Selected Countries and Regions; Coarse Grain includes: Barley, Corn, Millet, Mixed Grains, Oats, Rye and Sorghum

**Table 04 Corn Area, Yield, and Production**

Country / Region	Area (Million hectares)				Yield (Metric tons per hectare)				Production (Million metric tons)				Change in Production			
	Prel.		2023/24 Proj.		Prel.		2023/24 Proj.		Prel.		2023/24 Proj.		From last month		From last year	
	2021/22	2022/23	Feb	Mar	2021/22	2022/23	Feb	Mar	2021/22	2022/23	Feb	Mar	MMT	Percent	MMT	Percent
<b>World</b>	206.17	200.53	203.53	202.87	5.90	5.77	6.06	6.06	1,215.97	1,157.53	1,232.57	1,230.24	-2.33	-0.19	72.71	6.28
<b>United States</b>	34.39	31.85	35.01	35.01	11.09	10.89	11.13	11.13	381.47	346.74	389.69	389.69	0.00	0.00	42.96	12.39
<b>Total Foreign</b>	171.78	168.68	168.51	167.86	4.86	4.81	5.00	5.01	834.50	810.79	842.88	840.55	-2.33	-0.28	29.76	3.67
<b>China</b>	43.32	43.07	44.22	44.22	6.29	6.44	6.53	6.53	272.55	277.20	288.84	288.84	0.00	0.00	11.64	4.20
<b>South America</b>																
Brazil	21.80	22.40	21.90	21.90	5.32	6.12	5.66	5.66	116.00	137.00	124.00	124.00	0.00	0.00	-13.00	-9.49
Argentina	7.10	6.75	6.90	7.00	6.97	5.33	7.97	8.00	49.50	36.00	55.00	56.00	1.00	1.82	20.00	55.56
Bolivia	0.41	0.44	0.43	0.43	2.42	2.52	2.62	2.62	0.99	1.10	1.13	1.13	0.00	0.00	0.03	2.27
<b>European Union</b>	9.23	8.84	8.28	8.28	7.75	5.93	7.26	7.26	71.55	52.40	60.10	60.10	0.00	0.00	7.70	14.69
<b>Africa</b>																
South Africa	3.00	2.95	3.00	3.00	5.38	5.81	5.60	5.17	16.14	17.10	16.80	15.50	-1.30	-7.74	-1.60	-9.36
Nigeria	6.00	5.80	5.70	5.70	2.12	2.20	2.11	2.11	12.75	12.74	12.00	12.00	0.00	0.00	-0.74	-5.77
Ethiopia	2.53	2.55	2.56	2.56	3.72	4.00	4.06	4.06	9.40	10.20	10.40	10.40	0.00	0.00	0.20	1.96
Egypt	0.93	0.93	0.95	0.95	8.00	8.00	7.58	7.58	7.44	7.44	7.20	7.20	0.00	0.00	-0.24	-3.23
Tanzania	4.40	4.00	4.00	4.00	1.60	1.48	1.48	1.48	7.04	5.90	5.90	5.90	0.00	0.00	0.00	0.00
Malawi	1.75	1.82	1.79	1.79	2.62	2.05	1.96	1.96	4.58	3.72	3.51	3.51	0.00	0.00	-0.21	-5.57
Zambia	1.41	1.37	1.42	1.42	2.57	1.94	2.30	2.30	3.62	2.65	3.26	3.26	0.00	0.00	0.61	22.95
Kenya	2.17	1.90	2.00	2.00	1.52	1.53	1.60	1.60	3.30	2.90	3.20	3.20	0.00	0.00	0.30	10.34
Uganda	1.10	1.10	1.10	1.10	2.55	2.55	2.55	2.55	2.80	2.80	2.80	2.80	0.00	0.00	0.00	0.00
Zimbabwe	0.96	1.00	1.00	1.00	1.53	1.45	1.50	1.50	1.47	1.45	1.50	1.50	0.00	0.00	0.05	3.23
<b>Former Soviet Union - 12</b>																
Ukraine	5.49	4.05	4.00	3.80	7.68	6.67	7.63	7.76	42.13	27.00	30.50	29.50	-1.00	-3.28	2.50	9.26
Russia	2.90	2.64	2.58	2.40	5.25	6.00	6.60	6.92	15.23	15.83	17.00	16.60	-0.40	-2.35	0.77	4.85
<b>South Asia</b>																
India	9.96	10.74	10.40	10.40	3.39	3.54	3.41	3.41	33.73	38.09	35.50	35.50	0.00	0.00	-2.59	-6.79
Pakistan	1.65	1.60	1.65	1.65	6.43	5.83	6.36	6.36	10.64	9.33	10.50	10.50	0.00	0.00	1.17	12.53
Nepal	0.97	0.97	0.97	0.97	2.82	2.82	2.82	2.82	2.72	2.72	2.72	2.72	0.00	0.00	0.00	0.00
<b>Southeast Asia</b>																
Indonesia	3.90	3.95	4.00	4.00	3.26	3.27	3.23	3.23	12.70	12.90	12.90	12.90	0.00	0.00	0.00	0.00
Philippines	2.56	2.50	2.57	2.50	3.26	3.32	3.23	3.32	8.34	8.30	8.30	8.30	0.00	0.00	0.00	0.00
Vietnam	0.90	0.89	0.83	0.83	4.92	4.99	4.94	4.94	4.45	4.42	4.10	4.10	0.00	0.00	-0.32	-7.30
Thailand	1.20	1.18	1.25	1.25	4.42	4.41	4.32	4.32	5.30	5.20	5.40	5.40	0.00	0.00	0.20	3.85
<b>Mexico</b>	7.09	6.89	6.40	6.10	3.77	4.07	3.91	3.93	26.76	28.08	25.00	24.00	-1.00	-4.00	-4.08	-14.52
<b>Canada</b>	1.46	1.44	1.52	1.52	9.99	10.07	9.92	9.92	14.61	14.54	15.08	15.08	0.00	0.00	0.54	3.69
<b>Turkey</b>	0.54	0.53	0.65	0.65	12.04	12.83	12.92	12.92	6.50	6.80	8.40	8.40	0.00	0.00	1.60	23.53
<b>Others</b>	27.05	26.40	26.46	26.45	2.67	2.54	2.72	2.73	72.28	66.98	71.84	72.21	0.37	0.52	5.23	7.80

World and Selected Countries and Regions

**Table 05 Barley Area, Yield, and Production**

Country / Region	Area (Million hectares)				Yield (Metric tons per hectare)				Production (Million metric tons)				Change in Production			
	Prel.		2023/24 Proj.		Prel.		2023/24 Proj.		Prel.		2023/24 Proj.		From last month		From last year	
	2021/22	2022/23	Feb	Mar	2021/22	2022/23	Feb	Mar	2021/22	2022/23	Feb	Mar	MMT	Percent	MMT	Percent
<b>World</b>	50.15	47.72	47.16	47.76	2.89	3.14	3.03	2.98	145.14	149.65	142.78	142.22	-0.56	-0.39	-7.43	-4.96
<b>United States</b>	0.81	0.98	1.03	1.03	3.25	3.86	3.90	3.90	2.63	3.79	4.03	4.03	0.00	0.00	0.24	6.39
<b>Total Foreign</b>	49.34	46.74	46.13	46.72	2.89	3.12	3.01	2.96	142.52	145.86	138.75	138.20	-0.56	-0.40	-7.67	-5.26
<b>European Union</b>	10.27	10.30	10.30	10.30	5.06	5.02	4.61	4.61	52.01	51.69	47.50	47.50	0.00	0.00	-4.19	-8.11
<b>United Kingdom</b>	1.15	1.10	1.13	1.13	6.05	6.69	6.22	6.22	6.96	7.39	7.00	7.00	0.00	0.00	-0.39	-5.21
<b>Former Soviet Union - 12</b>																
Russia	7.69	7.75	7.63	7.65	2.28	2.77	2.69	2.68	17.51	21.50	20.50	20.50	0.00	0.00	-1.00	-4.65
Ukraine	2.68	1.95	1.70	1.70	3.70	3.13	3.74	3.74	9.92	6.10	6.35	6.35	0.00	0.00	0.25	4.10
Kazakhstan	2.16	2.18	2.43	2.43	1.10	1.51	1.08	1.08	2.37	3.29	2.61	2.61	0.00	0.00	-0.67	-20.47
Belarus	0.35	0.40	0.40	0.40	2.86	2.75	2.75	2.75	1.00	1.10	1.10	1.10	0.00	0.00	0.00	0.00
Azerbaijan	0.37	0.39	0.38	0.38	3.07	2.85	2.93	2.93	1.15	1.10	1.10	1.10	0.00	0.00	0.00	-0.09
<b>Canada</b>	3.01	2.64	2.70	2.70	2.32	3.79	3.30	3.30	6.98	9.99	8.90	8.90	0.00	0.00	-1.09	-10.92
<b>Australia</b>	5.10	4.13	4.20	4.20	2.81	3.43	2.38	2.57	14.34	14.14	10.00	10.80	0.80	8.00	-3.34	-23.60
<b>Middle East</b>																
Turkey	3.70	3.80	3.70	3.70	1.22	1.95	2.16	2.16	4.50	7.40	8.00	8.00	0.00	0.00	0.60	8.11
Iran	1.70	1.65	1.65	1.65	1.59	1.82	1.82	1.82	2.70	3.00	3.00	3.00	0.00	0.00	0.00	0.00
Iraq	1.00	0.85	0.60	1.00	0.36	0.28	1.33	0.20	0.36	0.24	0.80	0.20	-0.60	-75.00	-0.04	-14.89
Syria	1.44	1.12	0.90	1.10	0.18	0.16	1.22	0.45	0.25	0.18	1.10	0.50	-0.60	-54.55	0.32	179.33
<b>Africa</b>																
Ethiopia	0.96	0.98	0.98	0.98	2.45	2.22	2.46	2.46	2.35	2.18	2.40	2.40	0.00	0.00	0.22	9.89
Morocco	1.49	1.14	1.17	1.17	1.87	0.61	1.15	1.15	2.78	0.70	1.35	1.35	0.00	0.00	0.65	93.97
Algeria	1.03	1.03	1.03	1.03	0.93	1.56	1.00	1.00	0.95	1.60	1.03	1.03	0.00	0.00	-0.58	-35.94
Tunisia	0.28	0.30	0.20	0.20	1.54	1.53	0.85	0.85	0.43	0.46	0.17	0.17	0.00	0.00	-0.29	-63.04
South Africa	0.10	0.10	0.11	0.11	3.52	2.99	3.41	3.48	0.33	0.30	0.38	0.38	0.00	0.27	0.07	24.50
<b>South America</b>																
Argentina	1.34	1.58	1.40	1.40	3.96	2.93	3.57	3.57	5.30	4.62	5.00	5.00	0.00	0.00	0.38	8.23
Uruguay	0.22	0.21	0.18	0.18	4.11	4.25	3.89	3.89	0.92	0.90	0.70	0.70	0.00	0.00	-0.20	-21.96
Brazil	0.11	0.12	0.13	0.13	3.79	3.92	3.96	3.96	0.43	0.48	0.50	0.50	0.00	0.00	0.01	2.70
<b>India</b>	0.59	0.45	0.63	0.63	2.80	3.03	3.05	3.05	1.66	1.37	1.91	1.91	0.00	0.00	0.54	39.53
<b>China</b>	0.54	0.54	0.50	0.50	3.94	1.85	4.00	4.00	2.13	1.00	2.00	2.00	0.00	0.00	1.00	100.00
<b>Mexico</b>	0.35	0.30	0.33	0.29	3.11	2.69	2.92	2.69	1.09	0.80	0.95	0.78	-0.17	-17.89	-0.02	-1.89
<b>Afghanistan</b>	0.04	0.06	0.08	0.08	1.63	1.53	1.38	1.38	0.07	0.10	0.11	0.11	0.00	0.00	0.02	15.79
<b>Others</b>	1.68	1.69	1.71	1.72	2.41	2.52	2.52	2.52	4.04	4.26	4.31	4.32	0.01	0.26	0.06	1.39

World and Selected Countries and Regions

**Table 06 Oats Area, Yield, and Production**

Country / Region	Area (Million hectares)				Yield (Metric tons per hectare)				Production (Million metric tons)				Change in Production			
	Prel.		2023/24 Proj.		Prel.		2023/24 Proj.		Prel.		2023/24 Proj.		From last month		From last year	
	2021/22	2022/23	Feb	Mar	2021/22	2022/23	Feb	Mar	2021/22	2022/23	Feb	Mar	MMT	Percent	MMT	Percent
<b>World</b>	9.66	9.36	8.29	8.28	2.35	2.70	2.34	2.35	22.71	25.24	19.36	19.44	0.08	0.39	-5.81	-23.00
<b>United States</b>	0.26	0.36	0.34	0.34	2.20	2.35	2.46	2.46	0.58	0.84	0.83	0.83	0.00	0.00	-0.01	-1.08
<b>Total Foreign</b>	9.40	9.00	7.95	7.94	2.36	2.71	2.33	2.34	22.13	24.40	18.53	18.61	0.08	0.40	-5.80	-23.75
<b>European Union</b>	2.54	2.34	2.24	2.24	2.94	3.17	2.63	2.63	7.47	7.41	5.90	5.90	0.00	0.00	-1.51	-20.37
<b>Former Soviet Union - 12</b>																
Russia	2.17	2.13	1.80	1.77	1.72	2.11	1.83	1.86	3.73	4.50	3.30	3.30	0.00	0.00	-1.20	-26.67
Ukraine	0.18	0.15	0.15	0.15	2.61	2.47	2.33	2.33	0.48	0.38	0.35	0.35	0.00	0.00	-0.03	-7.89
Belarus	0.15	0.16	0.16	0.16	2.33	2.42	2.26	2.26	0.35	0.38	0.35	0.35	0.00	0.00	-0.03	-6.67
Kazakhstan	0.20	0.20	0.19	0.19	0.90	1.16	0.79	0.79	0.18	0.23	0.15	0.15	0.00	0.00	-0.08	-34.50
<b>Canada</b>	1.21	1.40	0.82	0.82	2.39	3.73	3.20	3.20	2.90	5.23	2.64	2.64	0.00	0.00	-2.59	-49.56
<b>South America</b>																
Argentina	0.35	0.26	0.29	0.29	2.07	1.67	2.14	2.14	0.73	0.43	0.61	0.61	0.00	0.00	0.18	42.19
Brazil	0.50	0.50	0.51	0.51	2.27	2.38	2.39	2.39	1.14	1.19	1.22	1.22	0.00	0.00	0.03	2.52
Chile	0.12	0.07	0.10	0.10	4.70	4.38	4.74	4.74	0.58	0.32	0.45	0.45	0.00	0.00	0.14	42.86
Uruguay	0.01	0.02	0.01	0.01	2.21	2.40	2.20	2.20	0.03	0.04	0.02	0.02	0.00	0.00	-0.01	-38.89
<b>Oceania</b>																
Australia	0.84	0.75	0.70	0.70	2.06	2.13	1.57	1.57	1.74	1.59	1.10	1.10	0.00	0.00	-0.49	-30.69
New Zealand	0.00	0.01	0.00	0.00	6.25	6.60	6.50	6.50	0.03	0.03	0.03	0.03	0.00	0.00	-0.01	-21.21
<b>China</b>	0.41	0.41	0.41	0.41	1.48	1.48	1.48	1.48	0.60	0.60	0.60	0.60	0.00	0.00	0.00	0.00
<b>Africa</b>																
Algeria	0.08	0.08	0.08	0.08	1.31	1.31	1.31	1.31	0.11	0.11	0.11	0.11	0.00	0.00	0.00	0.00
Morocco	0.02	0.01	0.02	0.02	0.33	0.31	0.40	0.40	0.01	0.00	0.01	0.01	0.00	0.00	0.00	50.00
South Africa	0.04	0.03	0.03	0.03	1.64	1.04	1.43	1.43	0.06	0.03	0.04	0.04	0.00	0.00	0.01	42.86
<b>Other Europe</b>																
United Kingdom	0.20	0.17	0.17	0.17	5.62	5.79	5.15	5.15	1.12	1.01	0.85	0.85	0.00	0.00	-0.16	-15.59
Norway	0.07	0.07	0.07	0.07	4.29	4.29	4.29	4.29	0.30	0.30	0.30	0.30	0.00	0.00	0.00	0.00
Serbia	0.02	0.02	0.02	0.02	3.11	2.80	3.00	3.00	0.06	0.04	0.06	0.06	0.00	0.00	0.02	42.86
Albania	0.02	0.02	0.02	0.02	2.20	2.27	2.27	2.27	0.03	0.03	0.03	0.03	0.00	0.00	0.00	0.00
Bosnia and Herzegovina	0.01	0.01	0.01	0.01	2.82	4.00	3.43	3.43	0.03	0.04	0.02	0.02	0.00	0.00	-0.02	-45.45
<b>Turkey</b>	0.14	0.14	0.11	0.13	2.01	2.64	2.38	2.60	0.28	0.37	0.25	0.33	0.08	30.00	-0.04	-10.96
<b>Mexico</b>	0.05	0.05	0.03	0.03	2.02	2.22	2.20	2.20	0.09	0.11	0.06	0.06	0.00	0.00	-0.06	-51.33
<b>Others</b>	0.06	0.03	0.06	0.06	1.66	1.63	1.68	1.68	0.10	0.05	0.09	0.09	0.00	0.00	0.04	80.77

World and Selected Countries and Regions

**Table 07 Rye Area, Yield, and Production**

Country / Region	Area (Million hectares)				Yield (Metric tons per hectare)				Production (Million metric tons)				Change in Production			
	2021/22	Prel.	2023/24 Proj.		2021/22	Prel.	2023/24 Proj.		2021/22	Prel.	2023/24 Proj.		From last month		From last year	
		2022/23	Feb	Mar		2022/23	Feb	Mar		2022/23	Feb	Mar	MMT	Percent	MMT	Percent
<b>World</b>	4.02	3.69	3.61	3.60	3.08	3.32	3.21	3.22	12.39	12.22	11.58	11.58	0.00	0.00	-0.64	-5.24
<b>United States</b>	0.12	0.14	0.13	0.13	2.09	2.26	2.03	2.03	0.25	0.32	0.26	0.26	0.00	0.00	-0.05	-16.46
<b>Total Foreign</b>	3.90	3.55	3.48	3.47	3.11	3.36	3.26	3.27	12.14	11.91	11.32	11.32	0.00	0.00	-0.59	-4.94
<b>European Union</b>	1.93	1.77	1.85	1.85	4.16	4.30	4.10	4.10	8.01	7.61	7.58	7.58	0.00	0.00	-0.03	-0.39
<b>Former Soviet Union - 12</b>																
Russia	0.99	0.88	0.80	0.79	1.73	2.27	2.13	2.15	1.72	2.00	1.70	1.70	0.00	0.00	-0.30	-15.00
Belarus	0.33	0.30	0.31	0.31	2.46	2.50	2.52	2.52	0.80	0.75	0.78	0.78	0.00	0.00	0.03	4.00
Ukraine	0.18	0.10	0.08	0.08	3.43	3.15	2.88	2.88	0.60	0.32	0.23	0.23	0.00	0.00	-0.09	-26.98
Kazakhstan	0.04	0.03	0.02	0.02	0.91	1.76	0.86	0.86	0.04	0.06	0.02	0.02	0.00	0.00	-0.04	-70.00
<b>Turkey</b>	0.10	0.10	0.11	0.11	2.00	2.79	2.91	2.91	0.20	0.27	0.32	0.32	0.00	0.00	0.05	17.22
<b>Canada</b>	0.12	0.15	0.12	0.12	3.21	3.42	3.09	3.09	0.37	0.52	0.36	0.36	0.00	0.00	-0.16	-31.15
<b>South America</b>																
Chile	0.00	0.00	0.00	0.00	5.00	5.00	0.00	0.00	0.01	0.01	0.00	0.00	0.00	100.00	-0.01	-100.00
Argentina	0.12	0.11	0.09	0.09	1.88	1.66	1.83	1.83	0.23	0.18	0.17	0.17	0.00	0.00	-0.01	-7.82
<b>Other Europe</b>																
Bosnia and Herzegovina	0.00	0.00	0.00	0.00	3.00	3.00	3.00	3.00	0.01	0.01	0.01	0.01	0.00	0.00	0.00	0.00
Switzerland	0.00	0.00	0.00	0.00	5.50	5.50	5.50	5.50	0.01	0.01	0.01	0.01	0.00	0.00	0.00	0.00
Serbia	0.01	0.01	0.01	0.01	3.80	3.00	3.33	3.33	0.02	0.02	0.02	0.02	0.00	0.00	0.00	11.11
<b>Australia</b>	0.05	0.05	0.05	0.05	0.71	0.71	0.71	0.71	0.03	0.03	0.03	0.03	0.00	0.00	0.00	0.00
<b>Others</b>	0.04	0.05	0.04	0.04	2.18	2.80	2.20	2.20	0.10	0.13	0.10	0.10	0.00	0.00	-0.03	-23.02

World and Selected Countries and Regions



**Table 08 Sorghum Area, Yield, and Production**

Country / Region	Area (Million hectares)				Yield (Metric tons per hectare)				Production (Million metric tons)				Change in Production			
	Prel.		2023/24 Proj.		Prel.		2023/24 Proj.		Prel.		2023/24 Proj.		From last month		From last year	
	2021/22	2022/23	Feb	Mar	2021/22	2022/23	Feb	Mar	2021/22	2022/23	Feb	Mar	MMT	Percent	MMT	Percent
<b>World</b>	40.63	39.67	41.59	41.57	1.50	1.40	1.43	1.44	60.93	55.35	59.58	59.72	0.14	0.23	4.37	7.90
<b>United States</b>	2.63	1.85	2.48	2.48	4.33	2.58	3.26	3.26	11.38	4.77	8.07	8.07	0.00	0.00	3.30	69.20
<b>Total Foreign</b>	38.01	37.82	39.12	39.10	1.30	1.34	1.32	1.32	49.55	50.58	51.51	51.65	0.14	0.27	1.07	2.12
<b>Africa</b>																
Nigeria	5.70	5.70	5.70	5.70	1.18	1.18	1.18	1.18	6.73	6.74	6.70	6.70	0.00	0.00	-0.04	-0.62
Ethiopia	1.65	1.52	1.66	1.66	2.70	2.56	2.65	2.65	4.45	3.88	4.40	4.40	0.00	0.00	0.52	13.49
Sudan	6.92	7.00	7.50	7.50	0.51	0.75	0.67	0.67	3.53	5.25	5.00	5.00	0.00	0.00	-0.25	-4.73
Burkina Faso	1.90	1.90	1.90	1.90	0.87	1.06	1.00	1.00	1.64	2.01	1.90	1.90	0.00	0.00	-0.11	-5.66
Mali	1.55	1.50	1.50	1.50	0.81	1.05	1.00	1.00	1.25	1.58	1.50	1.50	0.00	0.00	-0.08	-5.18
Niger	3.52	3.70	3.70	3.70	0.34	0.57	0.51	0.51	1.21	2.10	1.90	1.90	0.00	0.00	-0.20	-9.52
Cameroon	0.74	0.74	0.74	0.74	1.62	1.62	1.62	1.62	1.20	1.20	1.20	1.20	0.00	0.00	0.00	0.00
Tanzania	1.04	1.00	1.00	1.00	1.04	1.00	1.00	1.00	1.08	1.00	1.00	1.00	0.00	0.00	0.00	0.00
Egypt	0.16	0.15	0.15	0.15	4.90	5.00	5.00	5.00	0.77	0.75	0.75	0.75	0.00	0.00	0.00	0.00
Uganda	0.23	0.25	0.25	0.25	0.87	0.90	0.90	0.90	0.20	0.23	0.23	0.23	0.00	0.00	0.00	0.00
Ghana	0.31	0.31	0.31	0.31	1.05	1.49	1.13	1.13	0.32	0.46	0.35	0.35	0.00	0.00	-0.11	-24.41
Mozambique	0.25	0.25	0.25	0.25	0.64	0.61	0.64	0.64	0.16	0.15	0.16	0.16	0.00	0.00	0.01	4.58
South Africa	0.04	0.03	0.04	0.04	2.78	2.76	3.75	2.75	0.10	0.09	0.15	0.11	-0.04	-26.67	0.02	17.02
<b>Mexico</b>	1.40	1.40	1.29	1.29	3.47	3.50	3.39	3.39	4.84	4.89	4.35	4.35	0.00	0.00	-0.54	-11.08
<b>South America</b>																
Argentina	0.70	0.50	0.60	0.60	4.12	3.22	4.17	4.17	2.88	1.61	2.50	2.50	0.00	0.00	0.89	55.28
Brazil	0.95	1.07	1.23	1.23	3.20	2.72	2.93	2.93	3.04	2.92	3.60	3.60	0.00	0.00	0.68	23.29
<b>South Asia</b>																
India	3.80	3.54	4.10	4.10	1.09	1.08	1.07	1.07	4.15	3.81	4.40	4.40	0.00	0.00	0.59	15.36
Pakistan	0.08	0.22	0.22	0.22	0.83	0.63	0.63	0.63	0.06	0.14	0.14	0.14	0.00	0.00	0.00	0.00
<b>China</b>	0.63	0.63	0.63	0.63	4.76	4.76	4.76	4.76	3.00	3.00	3.00	3.00	0.00	0.00	0.00	0.00
<b>Australia</b>	0.62	0.69	0.60	0.60	4.26	3.84	3.00	3.33	2.65	2.64	1.80	2.00	0.20	11.11	-0.64	-24.18
<b>European Union</b>	0.15	0.13	0.16	0.16	5.44	4.29	5.16	5.16	0.80	0.55	0.80	0.80	0.00	0.00	0.25	44.67
<b>Others</b>	5.69	5.60	5.60	5.58	0.97	0.99	1.02	1.01	5.50	5.57	5.69	5.67	-0.02	-0.39	0.10	1.80

World and Selected Countries and Regions

**Table 09 Rice Area, Yield, and Production**  
**World and Selected Countries and Regions**

Country / Region	Area (Million hectares)				Yield (Metric tons per hectare)				Production (Million metric tons)				Change in Production			
	Prel.		2023/24 Proj.		Prel.		2023/24 Proj.		Prel.		2023/24 Proj.		From last month		From last year	
	2021/22	2022/23	Feb	Mar	2021/22	2022/23	Feb	Mar	2021/22	2022/23	Feb	Mar	MMT	Percent	MMT	Percent
<b>World</b>	165.66	165.68	165.07	166.18	4.62	4.64	4.65	4.63	513.10	514.57	513.74	515.39	1.65	0.32	0.82	0.16
<b>United States</b>	1.00	0.88	1.16	1.16	8.64	8.28	8.57	8.57	6.07	5.08	6.93	6.93	0.00	0.00	1.85	36.38
<b>Total Foreign</b>	164.65	164.80	163.92	165.02	4.60	4.62	4.62	4.60	507.03	509.49	506.80	508.46	1.65	0.33	-1.03	-0.20
<b>East Asia</b>																
China	29.92	29.45	28.95	28.95	7.11	7.08	7.14	7.14	148.99	145.95	144.62	144.62	0.00	0.00	-1.33	-0.91
Japan	1.52	1.50	1.47	1.47	6.90	6.86	6.82	6.82	7.64	7.48	7.30	7.30	0.00	0.00	-0.18	-2.41
Korea, South	0.73	0.73	0.71	0.71	7.12	6.87	7.00	7.00	3.88	3.76	3.70	3.70	0.00	0.00	-0.06	-1.65
Korea, North	0.56	0.54	0.54	0.54	3.74	3.87	4.18	4.18	1.36	1.36	1.47	1.47	0.00	0.00	0.11	8.09
<b>South Asia</b>																
India	46.28	47.83	47.00	48.00	4.20	4.26	4.21	4.19	129.47	135.76	132.00	134.00	2.00	1.52	-1.76	-1.29
Bangladesh	11.62	11.60	11.65	11.65	4.63	4.70	4.67	4.67	35.85	36.35	36.30	36.30	0.00	0.00	-0.05	-0.14
Pakistan	3.54	2.98	3.50	3.60	3.95	3.68	3.86	3.75	9.32	7.30	9.00	9.00	0.00	0.00	1.70	23.29
Nepal	1.48	1.45	1.45	1.45	3.47	3.79	3.66	3.66	3.42	3.65	3.53	3.53	0.00	0.00	-0.12	-3.39
Sri Lanka	1.13	1.15	1.16	1.16	3.56	3.63	4.22	4.22	2.73	2.84	3.33	3.33	0.00	0.00	0.50	17.49
<b>Southeast Asia</b>																
Indonesia	11.60	11.55	11.30	11.30	4.67	4.64	4.67	4.67	34.40	34.00	33.50	33.50	0.00	0.00	-0.50	-1.47
Vietnam	7.10	7.10	7.15	7.15	6.01	6.07	6.05	6.05	26.67	26.94	27.00	27.00	0.00	0.00	0.06	0.22
Thailand	10.70	11.07	10.65	10.65	2.81	2.86	2.85	2.85	19.88	20.91	20.00	20.00	0.00	0.00	-0.91	-4.35
Burma	7.00	6.80	6.86	6.86	2.77	2.71	2.72	2.72	12.40	11.80	11.95	11.95	0.00	0.00	0.15	1.27
Philippines	4.80	4.85	4.80	4.80	4.15	4.13	4.13	4.07	12.54	12.63	12.50	12.30	-0.20	-1.60	-0.33	-2.57
Cambodia	3.27	3.31	3.37	3.37	2.89	2.94	2.92	2.92	5.77	5.93	6.00	6.00	0.00	0.00	0.07	1.13
Laos	0.94	0.95	0.95	0.95	3.28	3.26	3.21	3.21	1.95	1.95	1.92	1.92	0.00	0.00	-0.03	-1.54
Malaysia	0.65	0.66	0.66	0.66	3.97	3.99	4.08	4.08	1.68	1.70	1.75	1.75	0.00	0.00	0.05	2.94
<b>South America</b>																
Brazil	1.62	1.48	1.55	1.57	6.67	6.78	7.10	7.01	7.34	6.82	7.48	7.48	0.00	0.00	0.66	9.65
Peru	0.42	0.42	0.43	0.43	8.37	8.55	8.52	8.52	2.43	2.48	2.50	2.50	0.00	0.00	0.02	0.64
<b>Africa</b>																
Egypt	0.50	0.60	0.63	0.63	8.41	8.70	8.70	8.70	2.90	3.60	3.78	3.78	0.00	0.00	0.18	5.00
Madagascar	1.60	1.60	1.60	1.60	2.74	2.75	2.75	2.75	2.81	2.82	2.82	2.82	0.00	0.00	0.00	0.00
Nigeria	3.65	3.50	3.50	3.50	2.29	2.43	2.37	2.37	5.26	5.36	5.23	5.23	0.00	0.00	-0.13	-2.35
<b>European Union</b>	0.40	0.33	0.34	0.34	6.64	6.32	6.56	6.56	1.73	1.34	1.43	1.43	0.00	0.00	0.09	6.89
<b>Iran</b>	0.56	0.57	0.57	0.57	5.14	5.32	5.30	5.30	1.90	2.00	2.00	2.00	0.00	0.00	-0.01	-0.25
<b>Others</b>	13.06	12.80	13.14	13.12	2.87	2.94	2.97	2.95	24.72	24.78	25.70	25.56	-0.15	-0.57	0.78	3.14

Yield is on a rough basis, before the milling process. Production is on a milled basis, after the milling process.

**Table 10 Total Oilseed Area, Yield, and Production**

**World and Selected Countries and Regions**

Country / Region	Area (Million hectares)				Yield (Metric tons per hectare)				Production (Million metric tons)				Change in Production			
	2021/22	Prel.	2023/24 Proj.		2021/22	Prel.	2023/24 Proj.		2021/22	Prel.	2023/24 Proj.		From last month		From last year	
		2022/23	Feb	Mar		2022/23	Feb	Mar		2022/23	Feb	Mar	MMT	Percent	MMT	Percent
<b>World Total</b>	--	--	--	--	--	--	--	--	611.75	637.28	659.40	658.68	-0.72	-0.11	21.40	3.36
<b>Total Foreign</b>	--	--	--	--	--	--	--	--	480.43	511.52	537.03	536.31	-0.72	-0.13	24.78	4.84
<b>Oilseed, Copra</b>	--	--	--	--	--	--	--	--	6.04	6.01	6.05	6.03	-0.02	-0.40	0.02	0.37
<b>Oilseed, Palm Kernel</b>	--	--	--	--	--	--	--	--	19.14	20.07	20.71	20.71	0.00	0.00	0.64	3.17
<b>Major Oilseeds</b>	260.91	266.95	270.05	270.23	2.25	2.29	2.34	2.34	586.57	611.20	632.64	631.95	-0.70	-0.11	20.75	3.39
<b>United States</b>	41.05	39.91	38.28	38.28	3.20	3.15	3.20	3.20	131.32	125.75	122.37	122.37	0.00	0.00	-3.38	-2.69
<b>Foreign Oilseeds</b>	219.86	227.04	231.77	231.95	2.07	2.14	2.20	2.20	455.25	485.45	510.27	509.57	-0.70	-0.14	24.12	4.97
<b>South America</b>	68.65	71.18	74.35	74.42	2.87	3.01	3.17	3.16	196.76	214.50	235.83	234.90	-0.93	-0.40	20.40	9.51
Brazil	43.23	46.46	47.84	47.84	3.12	3.59	3.38	3.36	135.03	166.85	161.79	160.79	-1.00	-0.62	-6.06	-3.63
Argentina	18.77	17.76	19.48	19.48	2.66	1.77	2.88	2.88	49.88	31.45	56.14	56.10	-0.04	-0.07	24.65	78.38
Paraguay	3.51	3.74	3.71	3.70	1.23	2.75	2.84	2.84	4.31	10.27	10.52	10.52	-0.01	-0.06	0.25	2.39
Bolivia	1.68	1.81	1.76	1.84	2.18	2.39	2.20	2.16	3.67	4.31	3.87	3.98	0.11	2.84	-0.33	-7.55
Uruguay	1.32	1.28	1.42	1.42	2.68	1.00	2.21	2.21	3.53	1.28	3.15	3.15	0.00	0.00	1.87	146.75
<b>China</b>	24.02	25.95	26.14	26.14	2.58	2.62	2.58	2.58	62.07	67.92	67.32	67.32	0.00	0.00	-0.60	-0.88
<b>South Asia</b>	41.74	43.61	44.37	44.37	1.11	1.04	1.02	1.03	46.48	45.35	45.19	45.88	0.69	1.52	0.54	1.18
India	38.49	40.19	40.40	40.40	1.10	1.03	0.99	1.01	42.15	41.39	40.15	40.84	0.69	1.71	-0.55	-1.34
Pakistan	2.53	2.49	3.06	3.06	1.31	1.08	1.24	1.24	3.31	2.69	3.80	3.80	0.00	0.00	1.11	41.17
<b>European Union</b>	11.09	12.36	12.53	12.53	2.80	2.58	2.69	2.68	31.08	31.88	33.65	33.60	-0.05	-0.15	1.72	5.41
<b>United Kingdom</b>	0.31	0.36	0.39	0.39	3.20	3.74	3.14	3.14	0.98	1.36	1.23	1.23	0.00	0.00	-0.14	-9.99
<b>Former Soviet Union - 12</b>	27.79	27.65	28.50	28.52	1.89	1.88	2.01	2.02	52.64	51.90	57.33	57.56	0.23	0.39	5.66	10.90
Russia	14.23	14.74	14.85	14.85	1.62	1.80	1.89	1.89	23.11	26.55	28.00	28.10	0.10	0.36	1.55	5.84
Ukraine	9.58	8.75	9.50	9.50	2.54	2.26	2.53	2.54	24.32	19.80	24.00	24.10	0.10	0.42	4.30	21.72
Uzbekistan	1.05	1.07	1.05	1.05	1.13	1.28	1.15	1.15	1.19	1.37	1.21	1.21	0.00	0.00	-0.16	-11.97
<b>Canada</b>	11.06	10.75	11.16	11.16	1.86	2.36	2.32	2.32	20.55	25.32	25.87	25.87	0.00	0.00	0.55	2.18
<b>Africa</b>	25.06	24.25	24.26	24.35	0.98	1.05	1.06	1.04	24.67	25.39	25.83	25.20	-0.63	-2.42	-0.19	-0.73
Nigeria	4.97	4.87	4.87	4.87	1.11	1.15	1.15	1.15	5.50	5.61	5.60	5.60	0.00	0.00	-0.01	-0.25
South Africa	1.76	1.88	1.84	1.93	1.92	2.02	2.05	1.64	3.37	3.79	3.79	3.16	-0.63	-16.51	-0.63	-16.64
Tanzania	1.34	1.36	1.47	1.47	0.90	0.91	0.87	0.87	1.21	1.23	1.28	1.28	0.00	0.00	0.04	3.49
<b>Southeast Asia</b>	3.12	3.08	3.05	3.05	1.36	1.36	1.39	1.39	4.23	4.18	4.23	4.23	0.00	0.00	0.05	1.12
Burma	1.95	1.94	1.95	1.95	1.16	1.18	1.24	1.24	2.25	2.28	2.41	2.41	0.00	0.00	0.13	5.47
Indonesia	0.90	0.87	0.84	0.84	1.55	1.52	1.49	1.49	1.39	1.32	1.26	1.26	0.00	0.00	-0.07	-4.92
<b>Australia</b>	3.94	4.61	4.07	4.07	2.20	2.19	1.73	1.73	8.68	10.11	7.04	7.04	0.00	0.00	-3.08	-30.42
<b>Turkey</b>	1.34	1.47	1.27	1.27	2.61	2.71	2.43	2.43	3.49	3.98	3.09	3.09	0.00	0.00	-0.90	-22.51
<b>Others</b>	1.75	1.78	1.69	1.69	2.06	2.01	2.18	2.18	3.62	3.57	3.67	3.67	0.00	0.00	0.10	2.83

World Total and Total Foreign: (Major Oilseeds plus copra and palm kernel) Major Oilseeds: (soybeans, sunflowerseeds, peanuts(inshell), cottonseed and rapeseed)

**Table 11 Soybean Area, Yield, and Production**

Country / Region	Area (Million hectares)				Yield (Metric tons per hectare)				Production (Million metric tons)				Change in Production			
	2021/22	Prel. 2022/23	2023/24 Proj. Feb Mar		2021/22	Prel. 2022/23	2023/24 Proj. Feb Mar		2021/22	Prel. 2022/23	2023/24 Proj. Feb Mar		From last month MMT Percent		From last year MMT Percent	
<b>World</b>	131.45	136.84	139.38	139.47	2.74	2.76	2.86	2.85	360.41	378.06	398.21	396.85	-1.36	-0.34	18.80	4.97
<b>United States</b>	34.92	34.87	33.33	33.33	3.48	3.33	3.40	3.40	121.50	116.22	113.34	113.34	0.00	0.00	-2.88	-2.48
<b>Total Foreign</b>	96.52	101.97	106.05	106.14	2.48	2.57	2.69	2.67	238.91	261.83	284.87	283.51	-1.36	-0.48	21.67	8.28
<b>South America</b>																
Brazil	41.60	44.60	45.90	45.90	3.14	3.63	3.40	3.38	130.50	162.00	156.00	155.00	-1.00	-0.64	-7.00	-4.32
Argentina	15.90	14.40	16.50	16.50	2.76	1.74	3.03	3.03	43.90	25.00	50.00	50.00	0.00	0.00	25.00	100.00
Paraguay	3.42	3.60	3.55	3.55	1.22	2.79	2.90	2.90	4.18	10.05	10.30	10.30	0.00	0.00	0.25	2.49
Bolivia	1.53	1.58	1.60	1.60	2.27	2.53	2.28	2.28	3.46	3.99	3.65	3.65	0.00	0.00	-0.34	-8.41
Uruguay	1.16	0.93	1.28	1.28	2.80	0.75	2.27	2.27	3.23	0.70	2.90	2.90	0.00	0.00	2.20	314.29
<b>East Asia</b>																
China	8.42	10.24	10.47	10.47	1.95	1.98	1.99	1.99	16.40	20.28	20.84	20.84	0.00	0.00	0.56	2.74
Korea, South	0.05	0.06	0.07	0.07	2.06	2.03	2.07	2.07	0.11	0.13	0.14	0.14	0.00	0.00	0.01	8.46
Korea, North	0.17	0.16	0.16	0.16	1.15	1.15	1.15	1.15	0.19	0.18	0.18	0.18	0.00	0.00	0.00	0.00
Japan	0.15	0.15	0.16	0.16	1.63	1.58	1.63	1.63	0.24	0.24	0.25	0.25	0.00	0.00	0.02	6.30
<b>India</b>	12.15	13.08	13.00	13.00	0.98	0.95	0.85	0.85	11.89	12.41	11.00	11.00	0.00	0.00	-1.41	-11.37
<b>Canada</b>	2.08	2.12	2.26	2.26	2.99	3.09	3.09	3.09	6.22	6.54	6.98	6.98	0.00	0.00	0.44	6.69
<b>Former Soviet Union - 12</b>																
Russia	2.99	3.36	3.50	3.50	1.59	1.79	1.94	1.94	4.76	6.00	6.80	6.80	0.00	0.00	0.80	13.41
Ukraine	1.44	1.82	2.00	2.00	2.64	2.25	2.60	2.60	3.80	4.10	5.20	5.20	0.00	0.00	1.10	26.83
<b>European Union</b>	1.01	1.13	1.09	1.09	2.82	2.26	2.81	2.81	2.83	2.55	3.06	3.06	0.00	0.00	0.51	20.05
<b>Southeast Asia</b>																
Indonesia	0.35	0.33	0.32	0.32	1.21	1.18	1.17	1.17	0.43	0.39	0.38	0.38	0.00	0.00	-0.02	-3.85
Vietnam	0.03	0.03	0.03	0.03	1.61	1.60	1.61	1.61	0.05	0.05	0.05	0.05	0.00	0.00	0.00	-6.25
Thailand	0.03	0.03	0.03	0.03	1.63	1.63	1.63	1.63	0.05	0.05	0.05	0.05	0.00	0.00	0.00	0.00
Burma	0.13	0.13	0.12	0.12	1.04	1.04	1.04	1.04	0.14	0.13	0.13	0.13	0.00	0.00	-0.01	-3.85
<b>Serbia</b>	0.24	0.24	0.24	0.24	2.28	1.70	2.77	2.77	0.54	0.40	0.65	0.65	0.00	0.00	0.25	62.91
<b>Mexico</b>	0.18	0.12	0.09	0.09	1.57	1.52	1.53	1.53	0.29	0.18	0.14	0.14	0.00	0.00	-0.04	-21.14
<b>Africa</b>																
South Africa	0.93	1.15	1.04	1.13	2.41	2.40	2.40	1.90	2.23	2.76	2.50	2.14	-0.36	-14.40	-0.62	-22.32
Nigeria	1.20	1.20	1.15	1.15	0.93	0.98	1.00	1.00	1.12	1.18	1.15	1.15	0.00	0.00	-0.03	-2.54
Zambia	0.30	0.38	0.38	0.38	1.35	1.27	1.27	1.27	0.41	0.48	0.48	0.48	0.00	0.00	0.00	0.00
Uganda	0.17	0.17	0.17	0.17	1.20	1.18	1.18	1.18	0.20	0.20	0.20	0.20	0.00	0.00	0.00	0.00
<b>Middle East</b>																
Iran	0.07	0.08	0.07	0.07	2.29	2.27	2.36	2.36	0.16	0.17	0.17	0.17	0.00	0.00	-0.01	-2.94
Turkey	0.03	0.04	0.03	0.03	3.91	4.14	4.12	4.12	0.13	0.15	0.14	0.14	0.00	0.00	-0.01	-3.45
<b>Others</b>	0.82	0.87	0.86	0.86	1.78	1.78	1.79	1.79	1.46	1.55	1.55	1.55	0.00	0.00	0.00	-0.19

World and Selected Countries and Regions

**Table 12 Cottonseed Area, Yield, and Production**

Country / Region	Area (Million hectares)				Yield (Metric tons per hectare)				Production (Million metric tons)				Change in Production			
	Prel.		2023/24 Proj.		Prel.		2023/24 Proj.		Prel.		2023/24 Proj.		From last month		From last year	
	2021/22	2022/23	Feb	Mar	2021/22	2022/23	Feb	Mar	2021/22	2022/23	Feb	Mar	MMT	Percent	MMT	Percent
<b>World</b>	31.77	31.19	30.98	31.00	1.31	1.36	1.34	1.34	41.51	42.57	41.46	41.66	0.20	0.48	-0.91	-2.14
<b>United States</b>	4.15	2.95	2.86	2.86	1.16	1.36	1.20	1.20	4.83	4.01	3.44	3.44	0.00	0.00	-0.57	-14.21
<b>Total Foreign</b>	27.62	28.24	28.13	28.15	1.33	1.37	1.35	1.36	36.68	38.56	38.02	38.22	0.20	0.53	-0.34	-0.88
<b>South Asia</b>																
India	12.37	12.93	12.70	12.70	0.83	0.86	0.84	0.85	10.32	11.17	10.61	10.83	0.21	2.00	-0.34	-3.04
Pakistan	2.00	1.80	2.40	2.40	1.30	0.94	1.21	1.21	2.60	1.69	2.90	2.90	0.00	0.00	1.21	71.82
<b>China</b>	3.10	3.15	2.90	2.90	3.39	3.82	3.72	3.72	10.50	12.03	10.78	10.78	0.00	0.00	-1.25	-10.42
<b>Former Soviet Union - 12</b>																
Uzbekistan	1.03	1.05	1.03	1.03	1.09	1.23	1.10	1.10	1.12	1.29	1.14	1.14	0.00	0.00	-0.16	-12.14
Turkmenistan	0.55	0.55	0.55	0.55	0.64	0.64	0.64	0.64	0.35	0.35	0.35	0.35	0.00	0.00	0.00	0.00
Tajikistan	0.17	0.17	0.17	0.19	1.09	1.11	1.15	1.16	0.19	0.19	0.20	0.22	0.03	13.33	0.03	17.55
Kazakhstan	0.11	0.13	0.12	0.12	0.84	1.05	0.88	0.88	0.09	0.13	0.11	0.11	0.00	0.00	-0.03	-19.85
<b>South America</b>																
Brazil	1.37	1.60	1.66	1.66	2.62	2.43	2.91	2.91	3.59	3.89	4.83	4.83	0.00	0.00	0.94	24.24
Argentina	0.48	0.51	0.56	0.56	1.12	0.84	1.12	1.06	0.54	0.43	0.63	0.59	-0.04	-5.88	0.16	37.35
<b>Middle East</b>																
Turkey	0.45	0.56	0.44	0.44	2.76	2.88	2.38	2.38	1.24	1.60	1.05	1.05	0.00	0.00	-0.56	-34.69
Syria	0.03	0.03	0.03	0.03	2.20	2.20	2.20	2.20	0.06	0.06	0.06	0.06	0.00	0.00	0.00	0.00
Iran	0.10	0.10	0.10	0.10	1.35	1.35	1.18	1.18	0.14	0.14	0.12	0.12	0.00	0.00	-0.02	-12.59
<b>Australia</b>	0.64	0.65	0.52	0.52	2.77	2.68	2.80	2.80	1.76	1.74	1.44	1.44	0.00	0.00	-0.30	-17.22
<b>European Union</b>	0.32	0.31	0.25	0.25	1.66	1.70	1.34	1.34	0.53	0.53	0.34	0.34	0.00	0.00	-0.19	-35.62
<b>Africa</b>																
Burkina Faso	0.60	0.62	0.54	0.54	0.45	0.35	0.40	0.40	0.27	0.21	0.21	0.21	0.00	0.00	0.00	-0.93
Mali	0.72	0.60	0.71	0.71	0.56	0.35	0.52	0.52	0.40	0.21	0.37	0.37	0.00	0.00	0.16	76.44
Cameroon	0.23	0.23	0.25	0.25	1.39	1.29	1.35	1.35	0.32	0.30	0.33	0.33	0.00	0.00	0.03	10.00
Cote d'Ivoire	0.47	0.41	0.40	0.40	0.60	0.29	0.50	0.50	0.28	0.12	0.20	0.20	0.00	0.00	0.08	67.23
Benin	0.64	0.57	0.51	0.51	0.73	0.64	0.68	0.68	0.47	0.36	0.35	0.35	0.00	0.00	-0.02	-5.22
Tanzania	0.34	0.36	0.47	0.47	0.33	0.37	0.38	0.38	0.11	0.13	0.18	0.18	0.00	0.00	0.04	32.58
Egypt	0.09	0.14	0.11	0.11	1.00	0.92	0.96	0.96	0.09	0.13	0.11	0.11	0.00	0.00	-0.02	-17.83
Nigeria	0.27	0.27	0.27	0.27	0.56	0.56	0.56	0.56	0.15	0.15	0.15	0.15	0.00	0.00	0.00	0.00
Uganda	0.10	0.10	0.10	0.10	1.49	1.49	1.49	1.49	0.15	0.15	0.15	0.15	0.00	0.00	0.00	0.00
Zimbabwe	0.25	0.24	0.24	0.24	0.33	0.34	0.34	0.34	0.08	0.08	0.08	0.08	0.00	0.00	0.00	0.00
Sudan	0.20	0.20	0.20	0.20	1.53	1.53	1.53	1.53	0.31	0.31	0.31	0.31	0.00	0.00	0.00	0.00
<b>Mexico</b>	0.15	0.20	0.13	0.13	2.71	2.70	2.43	2.43	0.42	0.54	0.32	0.32	0.00	0.00	-0.22	-41.48
<b>Burma</b>	0.16	0.15	0.16	0.16	0.81	0.76	1.25	1.25	0.13	0.11	0.19	0.19	0.00	0.00	0.08	70.18
<b>Others</b>	0.70	0.62	0.64	0.64	0.71	0.84	0.86	0.86	0.50	0.53	0.55	0.55	0.00	0.00	0.02	4.00

World and Selected Countries and Regions



**Table 13 Peanut Area, Yield, and Production**

Country / Region	Area (Million hectares)				Yield (Metric tons per hectare)				Production (Million metric tons)				Change in Production						
	2021/22	Prel.		2023/24 Proj.		2021/22	Prel.		2023/24 Proj.		2021/22	Prel.		2023/24 Proj.		From last month		From last year	
		2022/23	Feb	Mar	2022/23		Feb	Mar	2022/23	Feb		Mar	MMT	Percent	MMT	Percent			
<b>World</b>	30.70	28.89	29.50	29.50	1.69	1.71	1.71	1.71	51.97	49.36	50.46	50.46	0.00	0.00	1.10	2.22			
<b>United States</b>	0.62	0.56	0.64	0.64	4.64	4.50	4.19	4.19	2.89	2.51	2.67	2.67	0.00	0.00	0.16	6.28			
<b>Total Foreign</b>	30.07	28.33	28.87	28.87	1.63	1.65	1.66	1.66	49.08	46.85	47.79	47.79	0.00	0.00	0.94	2.00			
<b>China</b>	4.81	4.68	4.82	4.82	3.81	3.91	3.86	3.86	18.31	18.33	18.60	18.60	0.00	0.00	0.27	1.47			
<b>Africa</b>																			
Nigeria	3.50	3.40	3.45	3.45	1.21	1.26	1.25	1.25	4.23	4.28	4.30	4.30	0.00	0.00	0.02	0.37			
Sudan	3.94	3.00	3.00	3.00	0.60	0.83	0.83	0.83	2.36	2.50	2.50	2.50	0.00	0.00	0.00	0.00			
Senegal	1.21	1.23	1.23	1.23	1.38	1.23	1.40	1.40	1.68	1.50	1.72	1.72	0.00	0.00	0.21	14.18			
Cameroon	0.43	0.43	0.43	0.43	1.40	1.40	1.40	1.40	0.60	0.60	0.60	0.60	0.00	0.00	0.00	0.00			
Ghana	0.34	0.37	0.37	0.37	1.48	1.65	1.62	1.62	0.50	0.61	0.60	0.60	0.00	0.00	-0.01	-1.80			
Chad	0.75	0.76	0.76	0.76	1.06	1.10	1.09	1.09	0.80	0.83	0.83	0.83	0.00	0.00	0.00	0.12			
Malawi	0.40	0.40	0.40	0.40	0.88	0.88	0.88	0.88	0.35	0.35	0.35	0.35	0.00	0.00	0.00	0.00			
Congo (Kinshasa)	0.52	0.53	0.53	0.53	0.92	0.91	0.91	0.91	0.48	0.48	0.48	0.48	0.00	0.00	0.00	0.00			
Niger	0.92	0.97	0.92	0.92	0.56	0.69	0.65	0.65	0.52	0.67	0.60	0.60	0.00	0.00	-0.07	-10.58			
Mali	0.44	0.43	0.43	0.43	0.78	1.04	1.00	1.00	0.35	0.44	0.43	0.43	0.00	0.00	-0.02	-4.06			
Uganda	0.39	0.35	0.35	0.35	0.65	0.57	0.57	0.57	0.25	0.20	0.20	0.20	0.00	0.00	0.00	0.00			
Burkina Faso	0.58	0.63	0.64	0.64	0.83	0.89	0.90	0.90	0.48	0.56	0.58	0.58	0.00	0.00	0.02	2.86			
Guinea	0.79	0.90	0.90	0.90	1.15	1.14	1.11	1.11	0.91	1.03	1.00	1.00	0.00	0.00	-0.03	-2.44			
Egypt	0.06	0.06	0.06	0.06	3.42	3.20	3.20	3.20	0.21	0.21	0.21	0.21	0.00	0.00	0.00	0.00			
Central African Republic	0.13	0.13	0.13	0.13	1.15	1.15	1.15	1.15	0.15	0.15	0.15	0.15	0.00	0.00	0.00	0.00			
South Africa	0.04	0.03	0.04	0.04	1.51	2.26	2.00	2.00	0.07	0.07	0.08	0.08	0.00	0.00	0.01	14.29			
Mozambique	0.38	0.38	0.38	0.38	0.34	0.34	0.34	0.34	0.13	0.13	0.13	0.13	0.00	0.00	0.00	0.00			
Cote d'Ivoire	0.17	0.17	0.17	0.17	1.42	1.47	1.45	1.45	0.23	0.24	0.24	0.24	0.00	0.00	0.00	-1.23			
Benin	0.17	0.17	0.18	0.18	1.05	0.96	0.97	0.97	0.18	0.16	0.18	0.18	0.00	0.00	0.01	6.71			
<b>South Asia</b>																			
India	5.71	4.96	5.30	5.30	1.52	1.27	1.21	1.21	8.70	6.30	6.40	6.40	0.00	0.00	0.10	1.59			
Pakistan	0.15	0.13	0.13	0.13	0.94	0.88	0.88	0.88	0.15	0.12	0.12	0.12	0.00	0.00	0.00	0.00			
<b>Southeast Asia</b>																			
Indonesia	0.55	0.54	0.52	0.52	1.76	1.72	1.69	1.69	0.96	0.93	0.88	0.88	0.00	0.00	-0.05	-5.38			
Burma	1.06	1.07	1.07	1.07	1.51	1.55	1.59	1.59	1.60	1.65	1.70	1.70	0.00	0.00	0.05	3.03			
Vietnam	0.16	0.16	0.15	0.15	2.58	2.58	2.60	2.60	0.41	0.40	0.39	0.39	0.00	0.00	-0.01	-2.50			
Thailand	0.02	0.02	0.02	0.02	1.67	1.67	1.67	1.67	0.04	0.04	0.04	0.04	0.00	0.00	0.00	0.00			
<b>South America</b>																			
Argentina	0.41	0.37	0.40	0.40	3.29	2.59	3.48	3.48	1.34	0.96	1.38	1.38	0.00	0.00	0.41	42.78			
Brazil	0.22	0.22	0.24	0.24	4.09	4.05	3.79	3.79	0.90	0.89	0.89	0.89	0.00	0.00	0.00	0.00			
<b>Mexico</b>	0.06	0.05	0.05	0.05	1.63	1.76	1.74	1.74	0.10	0.09	0.09	0.09	0.00	0.00	0.01	6.98			
<b>Others</b>	1.78	1.80	1.81	1.81	1.20	1.18	1.19	1.19	2.13	2.13	2.15	2.15	0.00	0.00	0.02	1.03			

**Table 14 Sunflowerseed Area, Yield, and Production**

Country / Region	Area (Million hectares)				Yield (Metric tons per hectare)				Production (Million metric tons)				Change in Production			
	2021/22	Prel.		2023/24 Proj.		2021/22	Prel.		2023/24 Proj.		2021/22	Prel.		2023/24 Proj.		
		2022/23	Feb	Mar	2022/23		Feb	Mar	2022/23	Feb		Mar	MMT	Percent	MMT	Percent
<b>World</b>	28.54	28.14	27.65	27.73	1.99	1.86	1.99	1.98	56.85	52.39	55.08	54.91	-0.16	-0.29	2.53	4.83
<b>United States</b>	0.50	0.65	0.51	0.51	1.71	1.97	2.00	2.00	0.86	1.27	1.03	1.03	0.00	0.00	-0.25	-19.39
<b>Total Foreign</b>	28.03	27.49	27.14	27.21	2.00	1.86	1.99	1.98	55.99	51.11	54.05	53.89	-0.16	-0.30	2.78	5.43
<b>Former Soviet Union - 12</b>																
Russia	9.61	9.11	9.30	9.30	1.62	1.78	1.84	1.84	15.57	16.25	17.10	17.10	0.00	0.00	0.85	5.20
Ukraine	7.10	5.70	6.00	6.00	2.46	2.14	2.42	2.42	17.50	12.20	14.50	14.50	0.00	0.00	2.30	18.85
Kazakhstan	0.94	1.09	1.13	1.13	1.10	1.20	1.10	1.10	1.03	1.30	1.24	1.24	0.00	0.00	-0.07	-5.21
<b>European Union</b>	4.37	4.98	4.90	4.90	2.36	1.84	2.08	2.08	10.33	9.18	10.20	10.20	0.00	0.00	1.02	11.10
<b>South America</b>																
Argentina	1.96	2.45	2.00	2.00	2.07	2.05	2.05	2.05	4.05	5.02	4.10	4.10	0.00	0.00	-0.92	-18.31
Uruguay	0.01	0.01	0.01	0.01	2.00	0.91	0.92	0.92	0.01	0.01	0.01	0.01	0.00	0.00	0.00	10.00
Bolivia	0.16	0.23	0.16	0.24	1.32	1.39	1.38	1.38	0.21	0.32	0.22	0.33	0.11	50.00	0.01	3.13
Brazil	0.04	0.04	0.04	0.04	1.03	1.56	1.55	1.55	0.04	0.06	0.07	0.07	0.00	0.00	0.00	1.56
Paraguay	0.03	0.03	0.03	0.02	1.84	1.64	1.50	1.63	0.05	0.04	0.05	0.04	-0.01	-13.33	0.00	-4.88
<b>China</b>	0.70	0.62	0.60	0.60	3.06	2.79	2.83	2.83	2.15	1.74	1.70	1.70	0.00	0.00	-0.04	-2.35
<b>South Asia</b>																
India	0.27	0.36	0.15	0.15	0.52	0.59	0.75	0.75	0.14	0.22	0.11	0.11	0.00	0.00	-0.10	-47.91
Pakistan	0.05	0.11	0.10	0.10	1.58	1.35	1.35	1.35	0.08	0.15	0.14	0.14	0.00	0.00	-0.01	-8.78
<b>Middle East</b>																
Turkey	0.76	0.79	0.70	0.70	2.30	2.41	2.21	2.21	1.75	1.90	1.55	1.55	0.00	0.00	-0.35	-18.42
Iran	0.04	0.04	0.04	0.04	1.00	1.02	1.05	1.05	0.04	0.04	0.04	0.04	0.00	0.00	0.00	-2.27
Israel	0.00	0.00	0.00	0.00	2.00	2.00	4.00	4.00	0.00	0.00	0.00	0.00	0.00	0.00	0.00	100.00
<b>Africa</b>																
Egypt	0.01	0.02	0.02	0.02	2.38	2.53	2.50	2.50	0.02	0.04	0.05	0.05	0.00	0.00	0.01	31.58
Morocco	0.02	0.03	0.02	0.02	1.56	1.11	1.27	1.27	0.03	0.03	0.03	0.03	0.00	0.00	0.00	-6.67
South Africa	0.67	0.56	0.62	0.62	1.26	1.30	1.52	1.09	0.85	0.72	0.94	0.67	-0.27	-28.34	-0.05	-7.46
<b>Burma</b>	0.60	0.60	0.60	0.60	0.65	0.65	0.65	0.65	0.39	0.39	0.39	0.39	0.00	0.00	0.00	0.00
<b>Canada</b>	0.04	0.04	0.04	0.04	2.03	2.21	2.30	2.30	0.08	0.08	0.09	0.09	0.00	0.00	0.01	9.52
<b>Australia</b>	0.02	0.03	0.03	0.03	1.58	1.48	1.48	1.48	0.03	0.04	0.04	0.04	0.00	0.00	0.00	0.00
<b>Others</b>	0.63	0.65	0.66	0.66	2.59	2.09	2.28	2.28	1.64	1.37	1.50	1.50	0.00	0.00	0.13	9.52

World and Selected Countries and Regions

**Table 15 Rapeseed Area, Yield, and Production**

Country / Region	Area (Million hectares)				Yield (Metric tons per hectare)				Production (Million metric tons)				Change in Production			
	2021/22	Prel.	2023/24 Proj.		2021/22	Prel.	2023/24 Proj.		2021/22	Prel.	2023/24 Proj.		From last month		From last year	
		2022/23	Feb	Mar		2022/23	Feb	Mar		2022/23	Feb	Mar	MMT	Percent	MMT	Percent
<b>World</b>	38.46	41.90	42.53	42.53	1.97	2.12	2.06	2.07	75.83	88.83	87.44	88.07	0.63	0.71	-0.77	-0.86
<b>United States</b>	0.85	0.88	0.94	0.94	1.46	1.98	2.01	2.01	1.24	1.74	1.90	1.90	0.00	0.00	0.16	8.97
<b>Total Foreign</b>	37.62	41.02	41.59	41.59	1.98	2.12	2.06	2.07	74.59	87.10	85.55	86.17	0.63	0.73	-0.92	-1.06
<b>European Union</b>	5.39	5.94	6.29	6.29	3.22	3.31	3.19	3.18	17.39	19.62	20.05	20.00	-0.05	-0.25	0.38	1.94
<b>United Kingdom</b>	0.31	0.36	0.39	0.39	3.20	3.74	3.14	3.14	0.98	1.36	1.23	1.23	0.00	0.00	-0.14	-9.99
<b>Switzerland</b>	0.02	0.02	0.02	0.02	3.14	3.14	3.14	3.14	0.07	0.07	0.07	0.07	0.00	0.00	0.00	0.00
<b>Canada</b>	8.95	8.60	8.86	8.86	1.59	2.17	2.12	2.12	14.25	18.70	18.80	18.80	0.00	0.00	0.11	0.56
<b>China</b>	6.99	7.25	7.35	7.35	2.10	2.14	2.10	2.10	14.71	15.53	15.40	15.40	0.00	0.00	-0.13	-0.84
<b>South Asia</b>																
India	7.99	8.85	9.25	9.25	1.39	1.28	1.30	1.35	11.10	11.30	12.03	12.50	0.48	3.95	1.20	10.62
Pakistan	0.32	0.45	0.43	0.43	1.50	1.64	1.53	1.53	0.48	0.74	0.65	0.65	0.00	0.00	-0.09	-12.16
Bangladesh	0.61	0.81	0.80	0.80	1.35	1.30	1.29	1.29	0.82	1.05	1.03	1.03	0.00	0.00	-0.02	-1.90
<b>Former Soviet Union - 12</b>																
Russia	1.62	2.27	2.05	2.05	1.71	1.89	2.00	2.05	2.78	4.30	4.10	4.20	0.10	2.44	-0.10	-2.33
Ukraine	1.04	1.23	1.50	1.50	2.91	2.85	2.87	2.93	3.02	3.50	4.30	4.40	0.10	2.33	0.90	25.71
Belarus	0.39	0.36	0.40	0.40	1.83	2.22	2.25	2.25	0.72	0.80	0.90	0.90	0.00	0.00	0.10	12.50
Kazakhstan	0.12	0.13	0.09	0.09	1.24	1.48	1.32	1.32	0.15	0.19	0.12	0.12	0.00	0.00	-0.07	-34.92
<b>Australia</b>	3.25	3.90	3.50	3.50	2.10	2.12	1.57	1.57	6.82	8.27	5.50	5.50	0.00	0.00	-2.77	-33.52
<b>South America</b>																
Chile	0.04	0.03	0.04	0.04	3.86	3.79	3.82	3.82	0.14	0.13	0.15	0.15	0.00	0.00	0.02	16.00
Paraguay	0.05	0.07	0.07	0.07	1.36	1.77	1.50	1.50	0.06	0.12	0.11	0.11	0.00	0.00	-0.01	-8.70
<b>Ethiopia</b>	0.03	0.03	0.03	0.03	1.80	1.80	1.80	1.80	0.05	0.05	0.05	0.05	0.00	0.00	0.00	0.00
<b>Others</b>	0.52	0.73	0.53	0.53	2.09	1.91	2.03	2.03	1.08	1.38	1.08	1.08	0.00	0.00	-0.30	-21.78

World and Selected Countries and Regions

**Table 16 Copra, Palm Kernel, and Palm Oil Production**

Country / Region	Production (Million metric tons)				Change in Production			
	2021/22	Prel.	2023/24 Proj.		From last month		From last year	
		2022/23	Feb	Mar	MMT	Percent	MMT	Percent
<b>Oilseed, Copra</b>								
Philippines	2.60	2.60	2.70	2.70	0.00	0.00	0.10	3.85
Indonesia	1.68	1.68	1.69	1.69	0.00	0.00	0.01	0.60
India	0.94	0.94	0.94	0.94	0.00	0.00	0.00	0.00
Vietnam	0.29	0.29	0.29	0.29	0.00	0.00	0.00	0.00
Papua New Guinea	0.11	0.11	0.11	0.11	0.00	0.00	0.00	0.00
Sri Lanka	0.11	0.07	0.07	0.07	0.00	0.00	0.00	0.00
Thailand	0.07	0.07	0.09	0.07	-0.02	-22.22	0.00	0.00
Mexico	0.05	0.05	0.05	0.05	0.00	0.00	0.00	0.00
Solomon Islands	0.03	0.03			0.00	0.00	-0.03	0.00
Cote d'Ivoire	0.03	0.03	0.03	0.03	0.00	0.00	0.00	0.00
World	6.04	6.01	6.05	6.03	-0.02	-0.33	0.03	0.50
<b>Oilseed, Palm Kernel</b>								
Indonesia	11.20	12.00	12.20	12.20	0.00	0.00	0.20	1.67
Malaysia	4.45	4.49	4.70	4.70	0.00	0.00	0.21	4.68
Nigeria	0.90	0.90	1.10	1.10	0.00	0.00	0.20	22.22
Thailand	0.83	0.86	0.86	0.86	0.00	0.00	0.00	0.00
Colombia	0.32	0.33	0.35	0.35	0.00	0.00	0.02	6.06
Guatemala	0.18	0.18	0.18	0.18	0.00	0.00	0.00	0.00
Papua New Guinea	0.17	0.17	0.18	0.18	0.00	0.00	0.01	5.88
Honduras	0.16	0.16	0.16	0.16	0.00	0.00	0.00	0.00
Brazil	0.15	0.15	0.16	0.16	0.00	0.00	0.01	6.67
Cameroon	0.15	0.15	0.15	0.15	0.00	0.00	0.00	0.00
World	19.14	20.07	20.71	20.71	0.00	0.00	0.64	3.19
<b>Oil, Palm</b>								
Indonesia	42.00	46.50	47.00	47.00	0.00	0.00	0.50	1.08
Malaysia	18.15	18.39	19.00	19.00	0.00	0.00	0.61	3.32
Thailand	3.38	3.42	3.45	3.45	0.00	0.00	0.03	0.88
Colombia	1.76	1.80	1.90	1.90	0.00	0.00	0.10	5.56
Nigeria	1.40	1.40	1.50	1.50	0.00	0.00	0.10	7.14
Guatemala	0.88	0.91	0.92	0.92	0.00	0.00	0.01	1.10
Papua New Guinea	0.72	0.78	0.80	0.80	0.00	0.00	0.02	2.56
Cote d'Ivoire	0.58	0.60	0.60	0.60	0.00	0.00	0.00	0.00
Honduras	0.60	0.60	0.60	0.60	0.00	0.00	0.00	0.00
Brazil	0.55	0.57	0.59	0.59	0.00	0.00	0.01	1.75
World	72.96	78.06	79.46	79.46	0.00	0.00	1.40	1.79

World and Selected Countries and Regions

**Table 17 Cotton Area, Yield, and Production**

Country / Region	Area (Million hectares)				Yield (Kilograms per hectare)				Production (Million 480 lb. bales)				Change in Production			
	Prel.		2023/24 Proj.		Prel.		2023/24 Proj.		Prel.		2023/24 Proj.		From last month		From last year	
	2021/22	2022/23	Feb	Mar	2021/22	2022/23	Feb	Mar	2021/22	2022/23	Feb	Mar	MBales	Percent	MBales	Percent
<b>World</b>	32.28	31.70	31.69	31.71	772	798	775	776	114.49	116.26	112.82	112.96	0.13	0.12	-3.30	-2.84
<b>United States</b>	4.15	2.95	2.86	2.86	919	1,068	947	921	17.52	14.47	12.43	12.10	-0.33	-2.69	-2.37	-16.37
<b>Total Foreign</b>	28.13	28.75	28.83	28.85	751	771	758	761	96.96	101.79	100.39	100.86	0.47	0.46	-0.93	-0.92
<b>South Asia</b>																
India	12.37	12.93	12.70	12.70	428	443	429	437	24.30	26.30	25.00	25.50	0.50	2.00	-0.80	-3.04
Pakistan	2.00	1.80	2.40	2.40	653	472	608	608	6.00	3.90	6.70	6.70	0.00	0.00	2.80	71.79
<b>China</b>	3.10	3.15	2.90	2.90	1,882	2,122	2,065	2,065	26.80	30.70	27.50	27.50	0.00	0.00	-3.20	-10.42
<b>South America</b>																
Brazil	1.37	1.60	1.66	1.66	1,720	1,595	1,910	1,910	10.82	11.72	14.56	14.56	0.00	0.00	2.84	24.23
Argentina	0.48	0.51	0.56	0.56	658	495	661	622	1.45	1.17	1.70	1.60	-0.10	-5.88	0.44	37.34
Paraguay	0.02	0.05	0.06	0.06	527	890	812	812	0.05	0.18	0.21	0.21	0.00	0.00	0.02	11.41
<b>Africa</b>																
Burkina Faso	0.60	0.62	0.54	0.54	351	273	313	313	0.96	0.78	0.77	0.77	0.00	0.00	-0.01	-0.65
Mali	0.72	0.60	0.71	0.71	432	269	399	399	1.43	0.74	1.30	1.30	0.00	0.00	0.57	76.87
Cote d'Ivoire	0.47	0.41	0.40	0.40	486	236	411	411	1.05	0.45	0.75	0.75	0.00	0.00	0.30	67.42
Benin	0.64	0.57	0.51	0.51	483	418	446	446	1.42	1.10	1.05	1.05	0.00	0.00	-0.06	-5.00
Egypt	0.09	0.14	0.11	0.11	717	661	693	693	0.28	0.43	0.35	0.35	0.00	0.00	-0.08	-17.65
Cameroon	0.23	0.23	0.25	0.25	606	563	587	587	0.64	0.60	0.66	0.66	0.00	0.00	0.06	10.00
Tanzania	0.34	0.36	0.47	0.47	164	184	220	220	0.26	0.31	0.47	0.47	0.00	0.00	0.17	54.10
Nigeria	0.27	0.27	0.27	0.27	282	282	282	282	0.35	0.35	0.35	0.35	0.00	0.00	0.00	0.00
Zimbabwe	0.25	0.24	0.24	0.24	191	195	195	195	0.22	0.22	0.22	0.22	0.00	0.00	0.00	0.00
Ethiopia	0.05	0.05	0.06	0.06	687	726	713	713	0.16	0.18	0.18	0.18	0.00	0.00	0.00	0.00
<b>Former Soviet Union - 12</b>																
Uzbekistan	1.03	1.05	1.03	1.03	606	684	613	613	2.87	3.30	2.90	2.90	0.00	0.00	-0.40	-12.12
Turkmenistan	0.55	0.55	0.55	0.55	356	356	356	356	0.90	0.90	0.90	0.90	0.00	0.00	0.00	0.00
Tajikistan	0.17	0.17	0.17	0.19	608	615	640	647	0.48	0.48	0.50	0.57	0.07	13.00	0.09	17.71
Kazakhstan	0.11	0.13	0.12	0.12	467	584	490	490	0.24	0.34	0.27	0.27	0.00	0.00	-0.07	-19.40
<b>Middle East</b>																
Turkey	0.45	0.56	0.44	0.44	1,839	1,922	1,583	1,583	3.80	4.90	3.20	3.20	0.00	0.00	-1.70	-34.69
Syria	0.03	0.03	0.03	0.03	1,132	1,132	1,132	1,132	0.13	0.13	0.13	0.13	0.00	0.00	0.00	0.00
Iran	0.10	0.10	0.10	0.10	871	871	762	762	0.40	0.40	0.35	0.35	0.00	0.00	-0.05	-12.50
<b>Australia</b>	0.64	0.65	0.52	0.52	2,006	1,943	2,029	2,029	5.85	5.80	4.80	4.80	0.00	0.00	-1.00	-17.24
<b>Mexico</b>	0.15	0.20	0.13	0.13	1,725	1,720	1,549	1,549	1.22	1.58	0.93	0.93	0.00	0.00	-0.66	-41.46
<b>Burma</b>	0.16	0.15	0.16	0.16	660	653	660	660	0.48	0.45	0.47	0.47	0.00	0.00	0.02	4.44
<b>Others</b>	1.76	1.65	1.79	1.79	549	582	512	512	4.42	4.41	4.20	4.20	0.00	0.00	-0.22	-4.96

World and Selected Countries and Regions



**TABLE 18**

The table below presents a record of the March projection and the final Estimate. Using world wheat production as an example, the "root mean square error" means that chances are 2 out of 3 that the current forecast will not be above or below the final estimate by more than 0.5 percent. Chances are 9 out of 10 (90% confidence level) that the difference will not exceed 0.9 percent. The average difference between the March projection and the final estimate is 2.3 million tons, ranging from 0.0 million to 8.0 million tons. The March projection has been below the estimate 31 times and above 11 times.

**RELIABILITY OF PRODUCTION PROJECTIONS 1/**

COMMODITY AND REGION	Root mean square error	90 percent confidence interval	Difference between forecast and final estimate				
			Average	Smallest	Largest	Years	
						Below final	Above final
	Percent		---Million metric tons---				
<b>WHEAT</b>							
World	0.5	0.9	2.3	0.0	8.0	31	11
U.S.	0.2	0.3	0.1	0.0	0.3	19	11
Foreign	0.6	1.0	2.3	0.1	8.0	31	11
<b>COARSE GRAINS 2/</b>							
World	1.2	2.0	10.5	0.5	35.1	35	7
U.S.	0.2	0.3	0.2	0.0	1.8	17	11
Foreign	1.7	2.8	10.6	0.5	35.1	35	7
<b>RICE (Milled)</b>							
World	1.3	2.2	3.5	0.2	13.8	31	11
U.S.	1.2	2.0	0.0	0.0	0.2	11	6
Foreign	1.3	2.2	3.5	0.1	13.8	31	11
<b>SOYBEANS</b>							
World	2.2	3.6	3.4	0.1	12.4	22	20
U.S.	1.3	2.3	0.7	0.0	3.2	18	17
Foreign	3.6	6.0	3.3	0.1	12.6	23	19
<b>COTTON</b>			---Million 480-lb. bales---				
World	1.8	3.0	1.4	0.0	5.2	25	15
U.S.	1.0	1.6	0.1	0.0	0.3	14	27
Foreign	2.2	3.7	1.4	0.0	5.3	25	16
<b>UNITED STATES</b>			-----Million bushels-----				
<i>CORN</i>	0.2	0.3	6	0	72	1	6
<i>SORGHUM</i>	0.1	0.2	0	0	4	0	2
<i>BARLEY</i>	0.9	1.6	1	0	11	21	4
<i>OATS</i>	0.4	0.7	0	0	2	5	4

1/ Marketing years 1981/82 through 2022/23 for grains, soybeans, and cotton. Final for grains, soybeans, and cotton is defined as the first November estimate following the marketing year for 1981/82 through 2021/22, and for 2022/23 the last month's estimate.

2/ Includes corn, sorghum, barley, oats, rye, millet, and mixed grain

March 2024

Global Market Analysis, FAS, USDA