



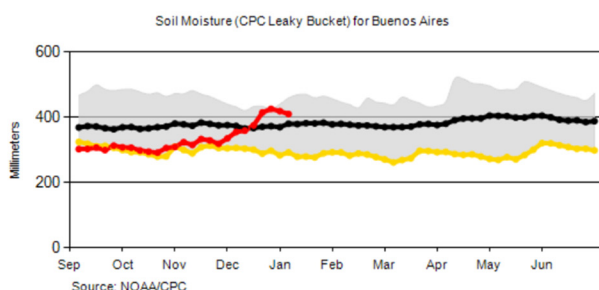
United States  
Department of  
Agriculture

Foreign  
Agricultural  
Service

Circular Series  
WAP 1-24  
January 2024

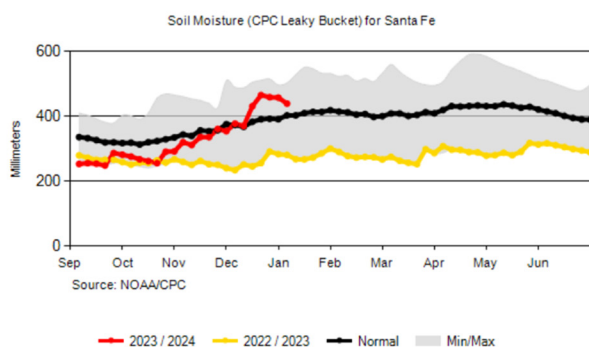
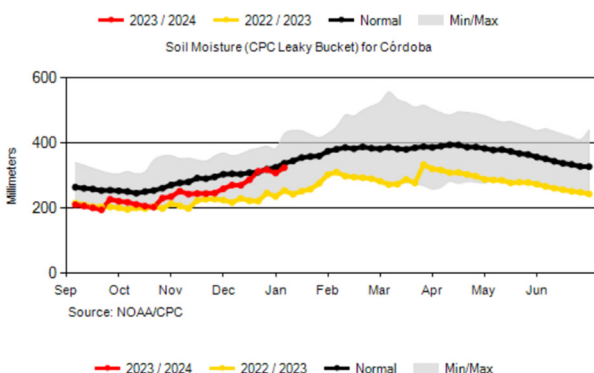
# World Agricultural Production

## Argentina Soybeans: Production Doubled from Last Year



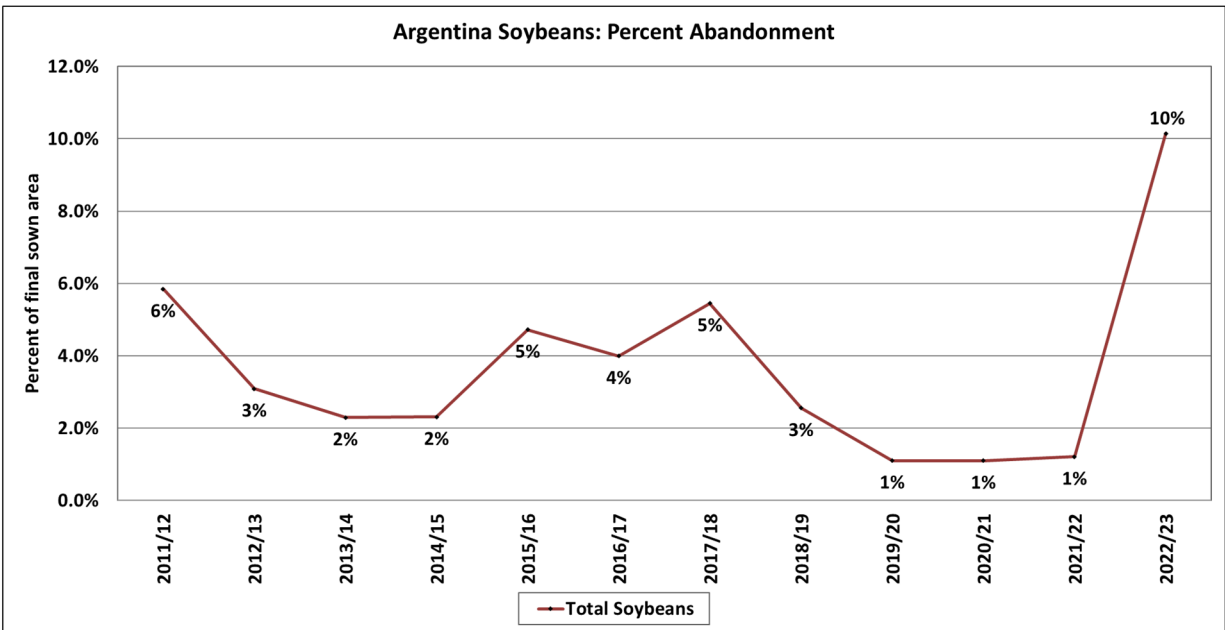
With the favorable rainfall in December and early January, surface soil moisture during soybean planting has been above normal in Buenos Aires (31 percent of production) and Santa Fe (19 percent). Córdoba (28 percent) soil moisture is slightly below average.

Source: CPC Soil Moisture



Argentina soybean production for marketing year 2023/24 is forecast at 50.0 million metric tons, up 4 percent from last month, and doubled from last year. Soybean yield is forecast at 3.03 tons per hectare, up 4 percent from last month, and up 75 percent from last year's yield. Harvested area is forecast at 16.5 million hectares, up 1 percent from last month, and 15 percent from last year.

Approved by the World Agricultural Outlook Board

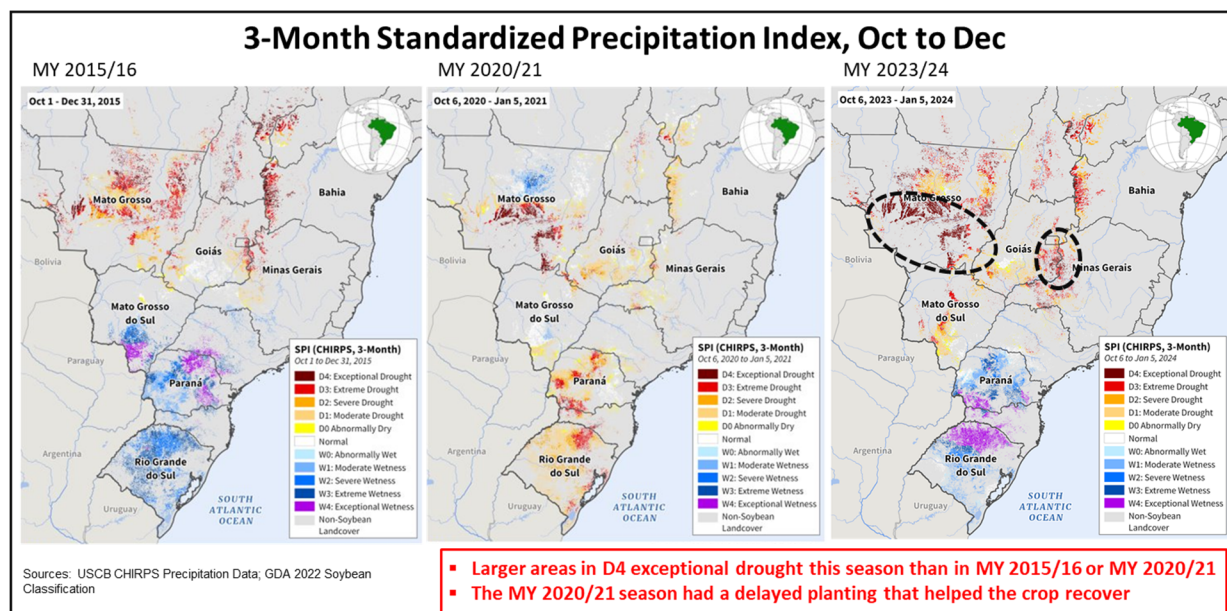


Source: Argentina Ministry of Agriculture

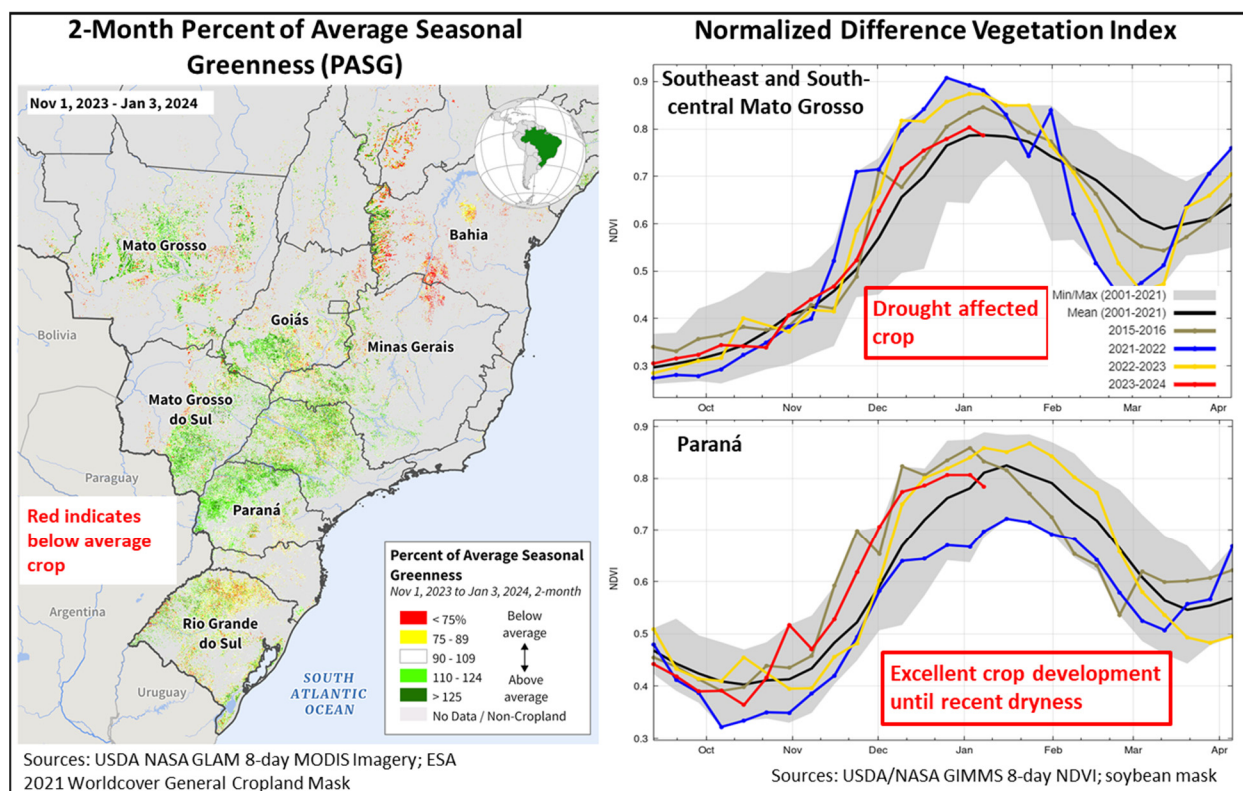
Soybeans are mainly grown in Buenos Aires (31 percent of production), Córdoba (28 percent) and Santa Fe (19 percent). According to the Argentina Ministry of Agriculture (MinAg), planting for soybeans is 89 percent complete at the beginning of January. The planted area forecast from MinAg was revised up month-to-month and abandonment is expected to be around 1 percent, similar to the abandonment levels in the three years preceding last year's drought. Yield for soybeans in Argentina is up month-to-month based on favorable rainfall during planting, emergence, and establishment which can be observed by the soil moisture status for the three main provinces. *(For more information, please contact [Katie.McGaughey@usda.gov](mailto:Katie.McGaughey@usda.gov).)*

### **Brazil Soybeans: Production Lowered Due to Prolonged Drought**

Soybean production in Brazil for marketing year (MY) 2023/24 is estimated at 157.0 million metric tons (mmt), lower by 4.0 mmt (2 percent) from last month, and lower by 3.0 mmt (2 percent) from last season's record crop. Harvested area for MY 2023/24 is estimated at a record 45.6 million hectares (mha), unchanged from last month, and up 1.3 mha (3 percent) from last year. Yield is estimated below the 10-year trend at 3.44 tons per hectare (t/ha), down 2 percent from last month's 3.53 t/ha yield, and down 5 percent from last year's record yield.



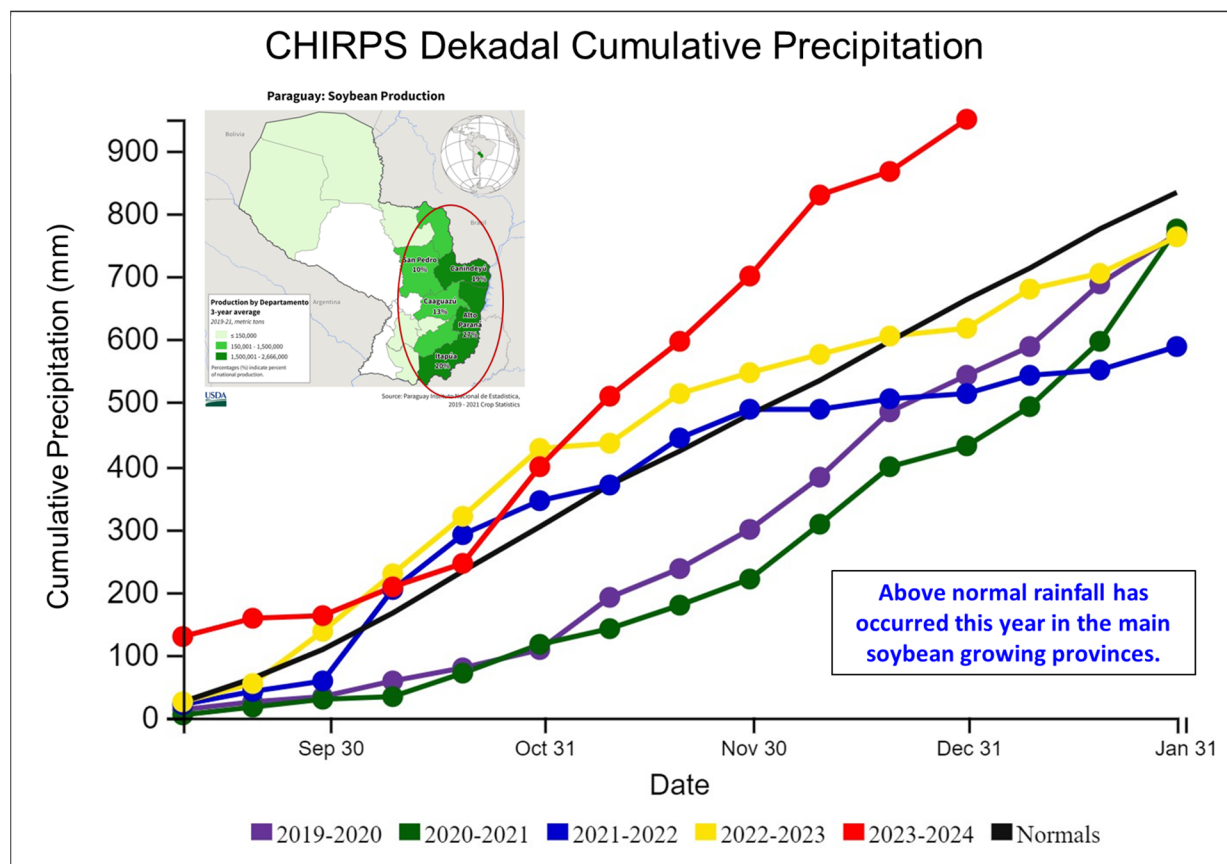
Beginning in mid-December, a more seasonable pattern of showers developed over previously dry and hot soybean producing regions. The rains were a welcome relief for the delayed and replanted crop. However, the earlier planted crop was past recovery stages. The effects of the variable rainfall differed by region. For example, roughly 80 percent of soybeans were planted by the first week of November in Mato Grosso. Drier weather in southern Brazil accelerated planting in the state of Rio Grande do Sul and ample precipitation benefitted the later-planted crop in the center-west states. The exception being northeastern Brazil which continues to experience irregular precipitation and ongoing planting delays. One of the key northeastern states, Bahia (5 percent of production), received roughly 40 percent of the normal rainfall during this season.



While the El Niño this year is not rated as strong as that of MY 2015/16 by NOAA, the high temperatures this year were not present in MY 2015/16. This combination of high heat and prolonged drought led to low soil moisture levels through mid-December, in addition to accelerating crop development. Thus, crops experienced water deficits during sensitive crop stages with the largest producer, Mato Grosso, at the center of these mediocre conditions. Satellite data confirm the deteriorated situation in Mato Grosso as the crop planted earlier experienced persistent drought that continued through vulnerable periods of flowering and grain fill. In the southern Brazilian state of Rio Grande do Sul (14 percent of production), recent drier weather is advancing crop development and application of treatments that were earlier leached due to heavy rains. Yield expectations in the state of Paraná remain favorable, although the recent dryness may impact the crop that is currently in pod-filling stages. Yield potential will depend on rainfall this month for the state. Harvest is roughly at 1 percent in early January and will continue through May for the main soybean regions. (For more information, please contact [Sunita.Yadav-Pauletti@usda.gov](mailto:Sunita.Yadav-Pauletti@usda.gov).)

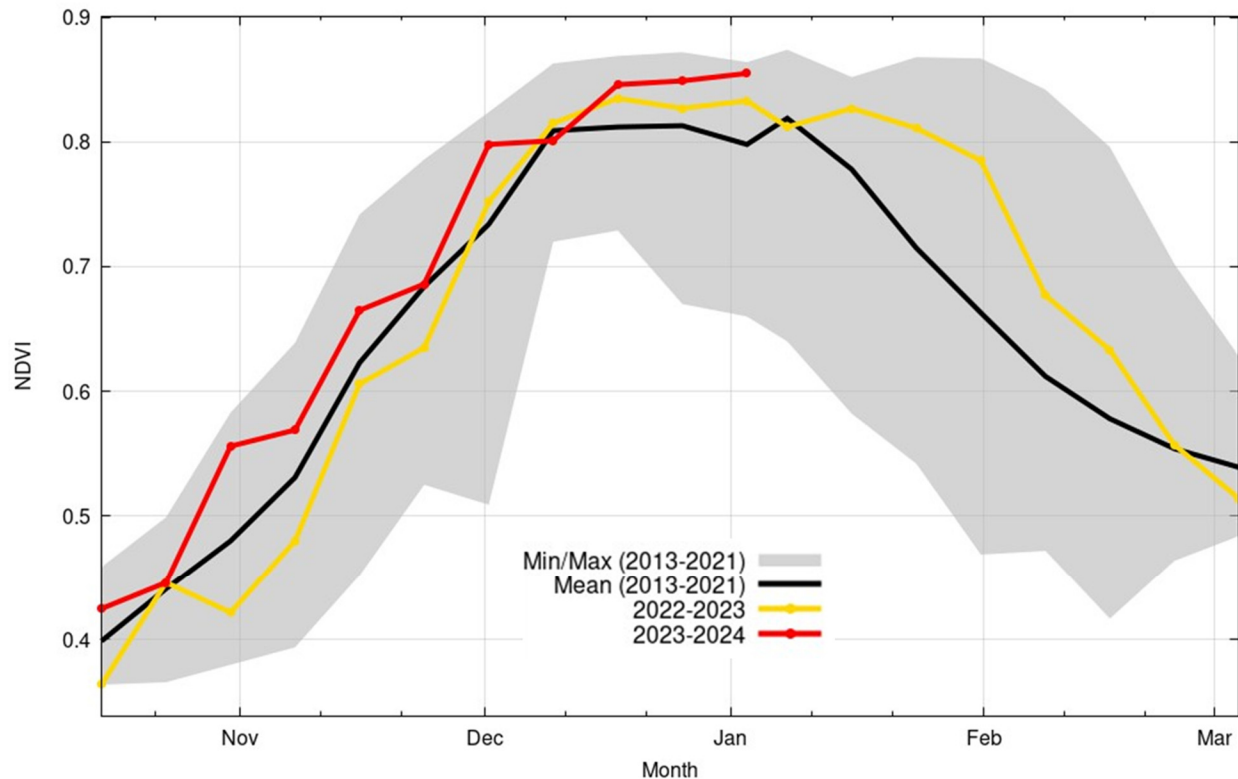


## Paraguay Soybeans: Production Up Due to Favorable Weather



Paraguay soybean production for marketing year 2023/24 is forecast at 10.3 million metric tons, up 3 percent from last month, and up 6 percent from last year. Soybean yield is forecast at 2.90 tons per hectare, up 3 percent from last month, and up 7 percent from last year's yield. Harvested area is forecast at 3.55 million hectares, unchanged from last month, but down 1 percent from last year.

## Paraguay 8-Day NDVI Time Series



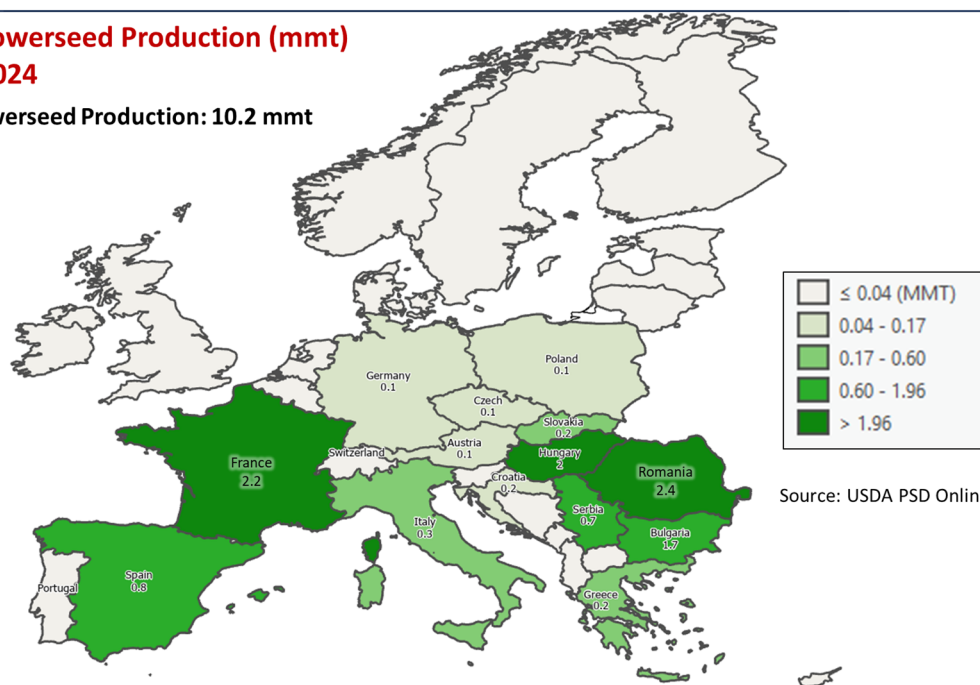
Sources: NASA GLAM, VIIRS NDVI; South America soybean crop mask from the University of Maryland Global Land Analysis and Discovery Project

Soybeans in Paraguay are grown along the Brazilian border in the southeastern part of the country. Planting occurs in October through December and harvest occurs in March through June. Yield is up month-to-month due to favorable rainfall throughout October, November, and December. Above-normal crop conditions can be shown by the satellite-derived Visible Infrared Imaging Radiometer Suite (VIIRS) Normalized Difference Vegetation Index (NDVI) using a soybean-specific crop mask. *(For more information, please contact [Katie.McGaughey@usda.gov](mailto:Katie.McGaughey@usda.gov).)*

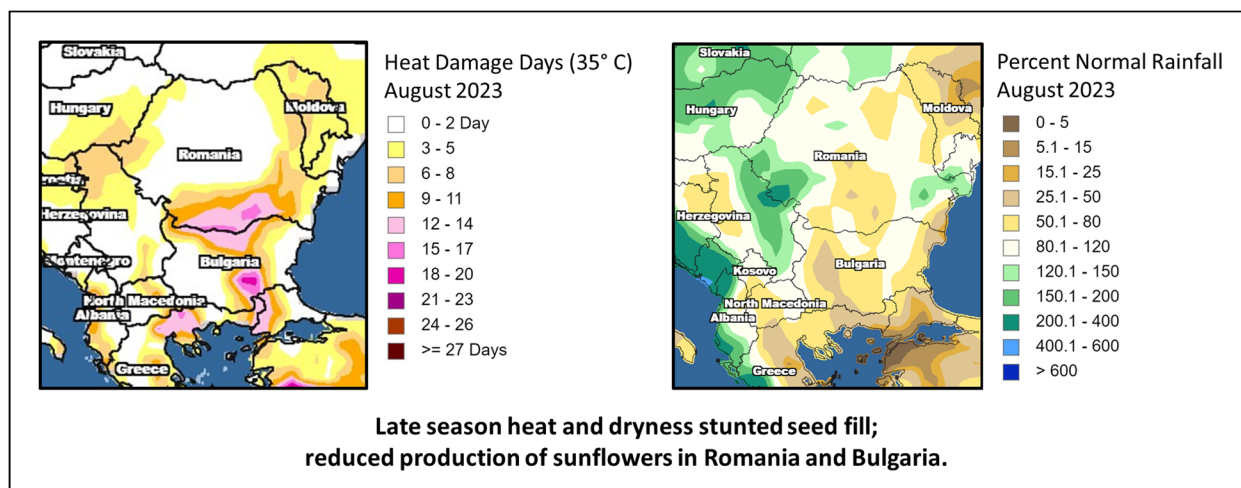
## European Union Sunflowerseed: Harvest Results Reduce Production

### Europe Sunflowerseed Production (mmt) for January 2024

EU Only Sunflowerseed Production: 10.2 mmt



Sunflowerseed production in the European Union (EU) for marketing year 2023/24 is estimated at 10.2 million metric tons (mmt), down 0.5 mmt (4 percent) from last month, but up 1.0 mmt (11 percent) from last year and 8 percent above the 5-year average. Harvested area is estimated at 4.9 million hectares, down 60,000 hectares from last month and down 80,000 hectares from last year, but 11 percent above the 5-year average. Yield is estimated at 2.08 tons per hectare (t/ha), compared to 2.15 t/ha for both last month and the 5-year average.



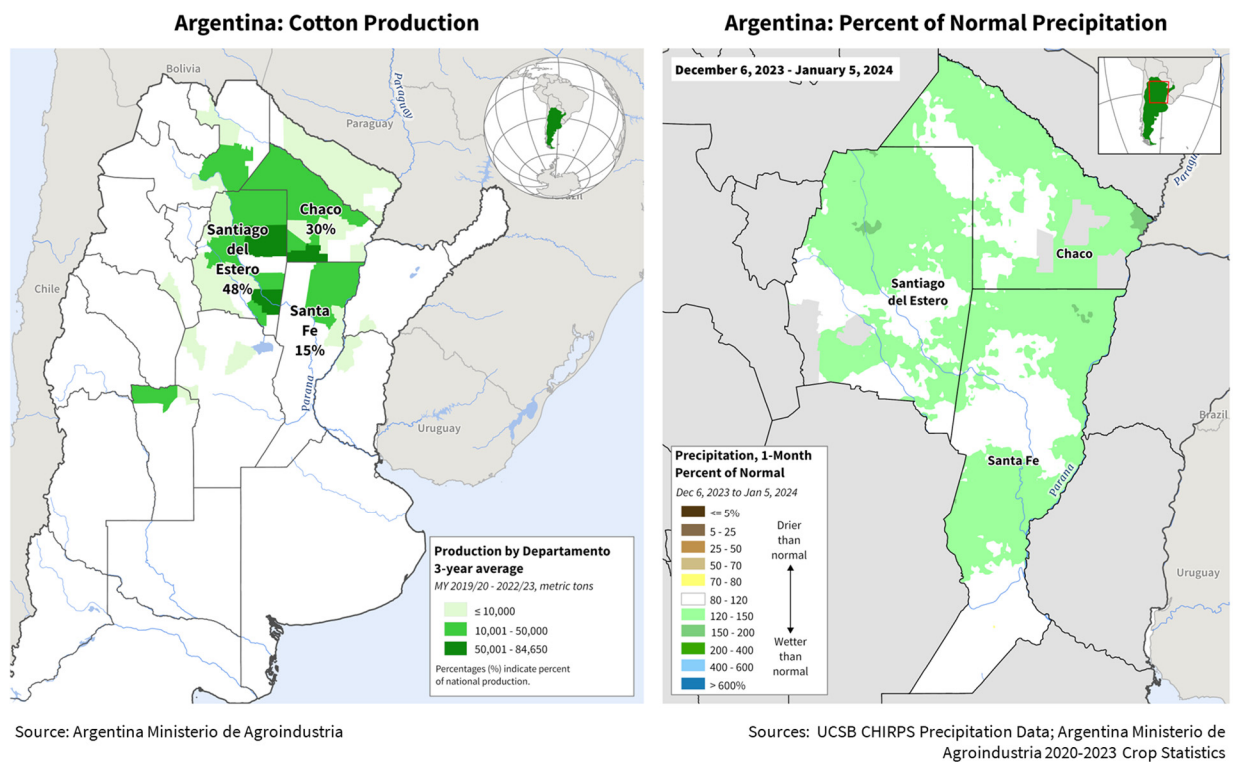
Source: CPC

The release of official data has resulted in USDA lowering its estimated EU sunflowerseed production for the Balkan countries of Bulgaria (-0.4 mmt) and Romania (-0.2 mmt). The late-

season heat and dryness that occurred during August in southeastern Europe prevented normal seed filling and ripening of the sunflower crop. In addition, some reductions came from the loss of harvested area in eastern regions of Bulgaria and Romania, where plants were so severely stunted that they weren't harvested. Meanwhile, official data from France has improved its prospects, with USDA raising France's production by 0.2 mmt from last month. Harvest of sunflower in the EU is complete.

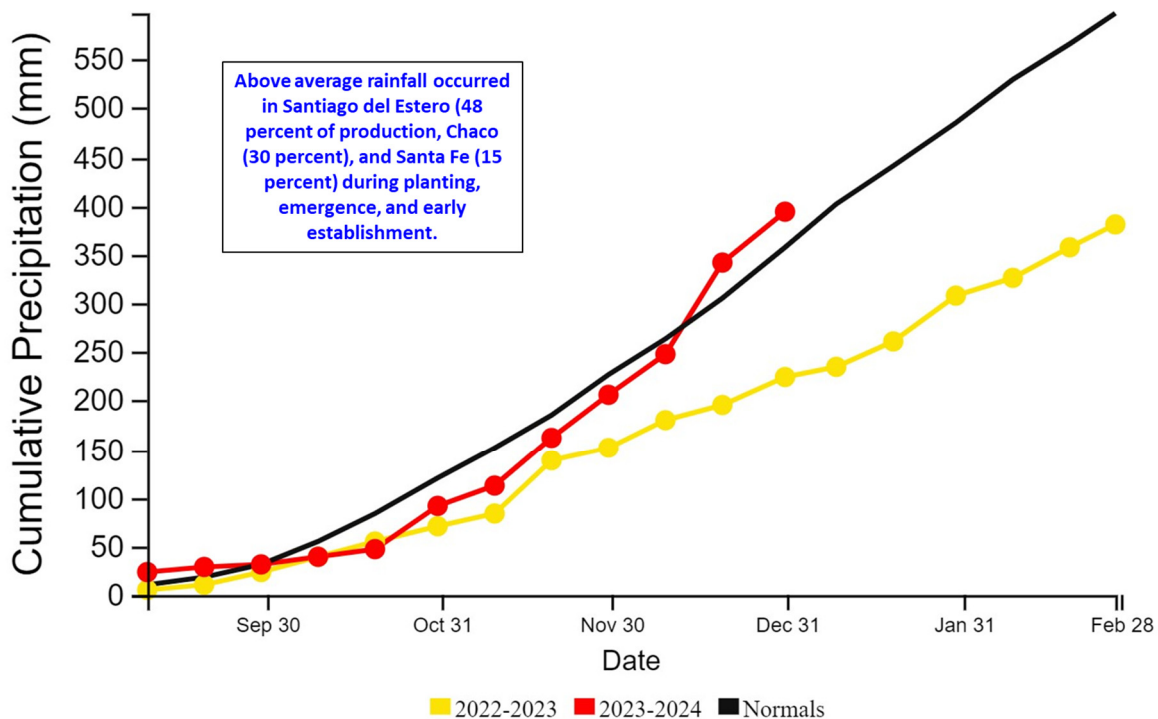
For country-specific area, yield, and production estimates within the European Union (EU), please go to PSD Online at <https://apps.fas.usda.gov/PSDOnline/app/index.html#/app/home>, and select "Downloadable Data Sets." Select the zipped file for "EU Countries Area & Production." (For more information, please contact [Bryan.Purcell@usda.gov](mailto:Bryan.Purcell@usda.gov).)

## Argentina Cotton: Second Highest Production on Record due to an Increase in Planted Area Forecast and Plentiful Rainfall During Planting



Argentina cotton production for marketing year (MY) 2023/24 is forecast at 1.70 million 480-lb bales, up 13 percent from last month, and up 15 percent from last year. Cotton production is forecast at the second highest, after the record of MY 1995/96. Cotton yield is forecast at 661 kilograms per hectare, up 7 percent from last month, and up 5 percent from last year. Harvested area is forecast at 560,000 hectares (ha), up 6 percent from last month, and 9 percent from last year.

## CHIRPS Dekadal Cumulative Precipitation

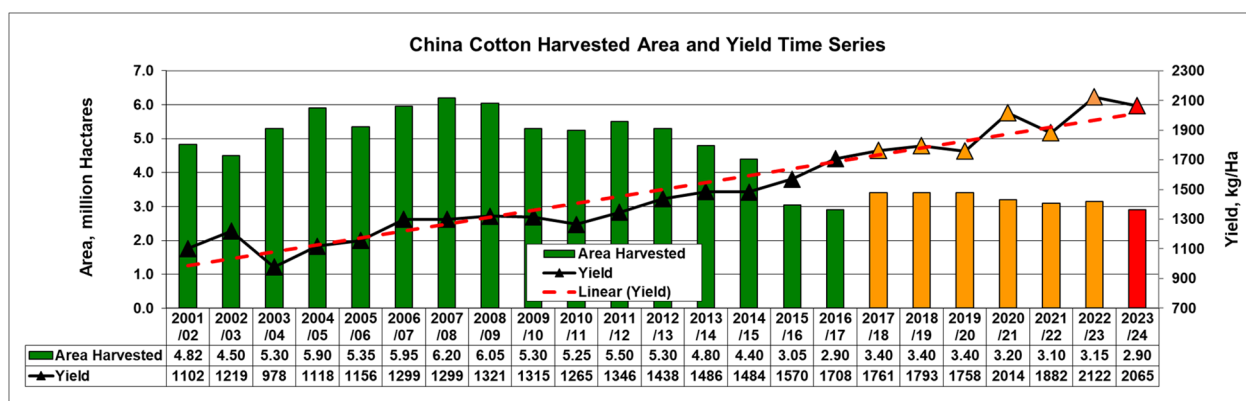


The Argentina Ministry of Agriculture published an updated planted area forecast of 610,000 ha. Abandonment for cotton is, on average, 8 percent. Cotton area has been mostly increasing for the last eight seasons and this year's area is the highest since MY 2010/11. This rebound in area is largely due to improved technology in the cotton sector. Planting began in mid-October and is 90 percent complete as of early January. The month-to-month increase in yield is due to above average rainfall that occurred in Santiago del Estero (48 percent of production), Chaco (30 percent), and Santa Fe (15 percent) during planting, emergence, and early establishment. *(For more information, please contact [Katie.McGaughey@usda.gov](mailto:Katie.McGaughey@usda.gov).)*

### China Cotton: Production Increased Due to Higher-than-Expected Yield

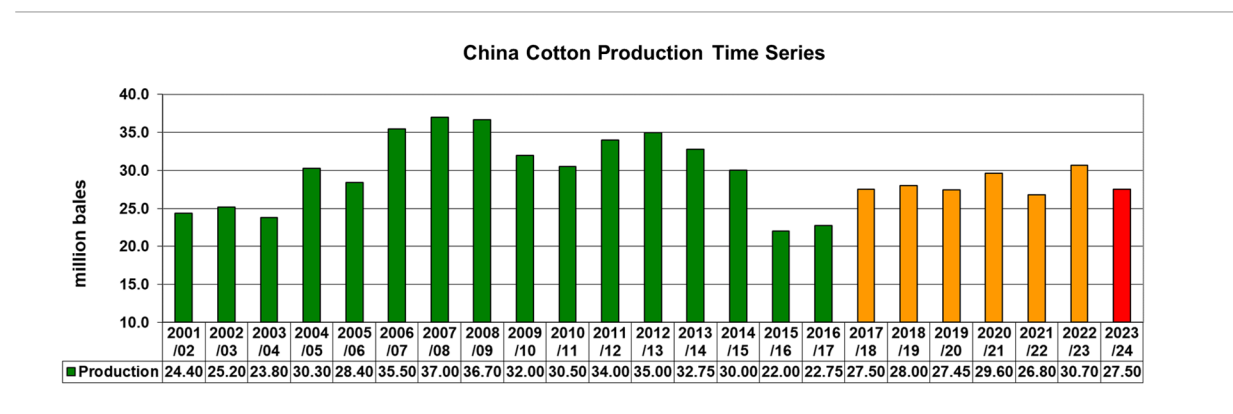
USDA estimates China's marketing year (MY) 2023/24 cotton production at 27.5 million 480-pound bales (6.0 million metric tons), up 2 percent or half a million bales from last month, but down 3.2 million bales or 10 percent from last year and down 4 percent from the 5-year average of 28.5 million bales. Area is estimated at 2.9 million hectares (mha), same as last month, but down 8 percent from last year, and down 11 percent from the 5-year average of 3.25 mha. Planted area is lower than expected due to continued area decline in the North China Plain, Yangtze and Yellow River basins. Although yield is estimated close to the long-term trend at 2,065 kilograms per hectare, the yields are estimated down year over year due to the unfavorable cold and cloudy May weather in Xinjiang province; cooler-than-normal temperatures in Xinjiang during April and May reduced the benefit of early planting and crop establishment. Approximately 90 percent of total China cotton is now produced in Xinjiang province, where yield has nearly doubled compared to elsewhere in the country.





Source: USDA PSD Online

The typical China cotton growing season is April to October. In Xinjiang planting starts in April and ends in mid-May. While in the Yellow River and Yangtze River basins, planting begins in late April and extends through May. Overall, the MY 2023/24 season was generally characterized by favorable soil moisture conditions and good irrigation water availability. Early in the season, relatively lower-than-expected temperatures prevailed in April and May in Xinjiang, which likely resulted in slow and delayed planting, slow crop establishment, and significant replanting in some regions. Early season temperatures affected yield potential during emergence. However, as the season progressed, the conditions improved significantly, especially in June, resulting in better-than-expected crop conditions. June is very critical, as the yield trends are considerably more deterministic of the end-of-season outcome.

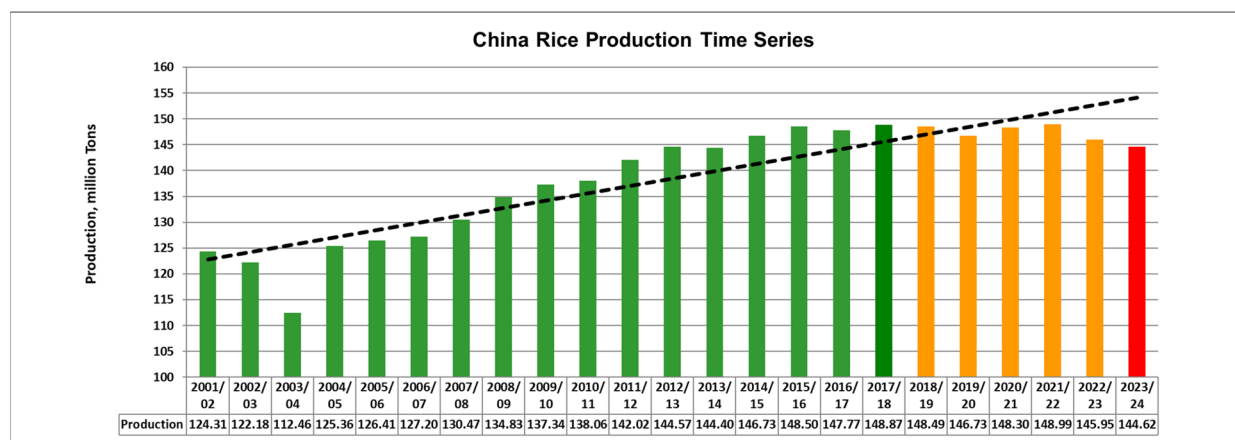


Source: USDA PSD Online

Xinjiang cotton farmers continue to be encouraged by the government's maintenance of a target price-based cotton subsidy. In 2020, China's National Development and Reform Commission (NDRC) published that the target price-based subsidy will continue through 2023. (For more information, please contact [Dath.Mita@usda.gov](mailto:Dath.Mita@usda.gov).)

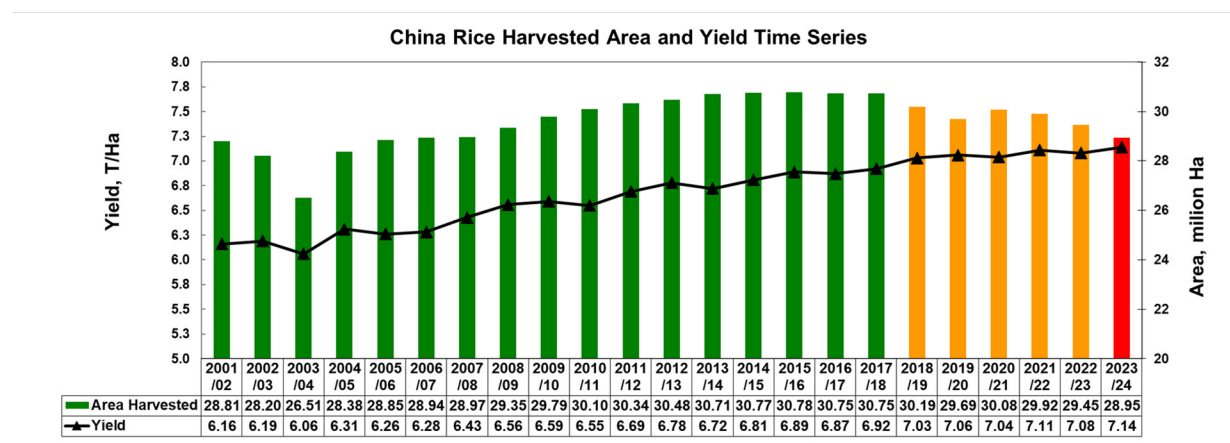
## China Rice: Production Decreased Due to Lower-than-Expected Harvested Area

Based on China's National Bureau of Statistics (NBS) 2023 grain production report, USDA estimates China's marketing year 2023/24 milled rice production at 144.6 million metric tons (mmt), down 3 percent or 4.4 mmt from last month and down approximately 1 percent or 1.3 mmt from last year, and down 2 percent or 3.1 mmt from the 5-year average. Area is estimated at 28.9 million hectares (mha), 3 percent below last month, down 2 percent from last year and down 3 percent from the 5-year average. Yield (rough basis) is estimated approximately at 7.14 metric tons per hectare (t/ha), almost the same as last month, but approximately up 1 percent from last year and from the 5-year average.



----- linear regression line

Source: USDA PSD Online



Source: USDA PSD Online

China has three rice plantings. Single rice crop which accounts for 66 percent of total rice production is planted in April to June; early-double rice which accounts for 16 percent is planted in April to May; and late-double rice which accounts for 18 percent is planted in July to August. According to the NBS the early-double rice registered less planted area compared to the previous season. FAS/Beijing reported concerns of floods due to two consecutive typhoons that occurred in

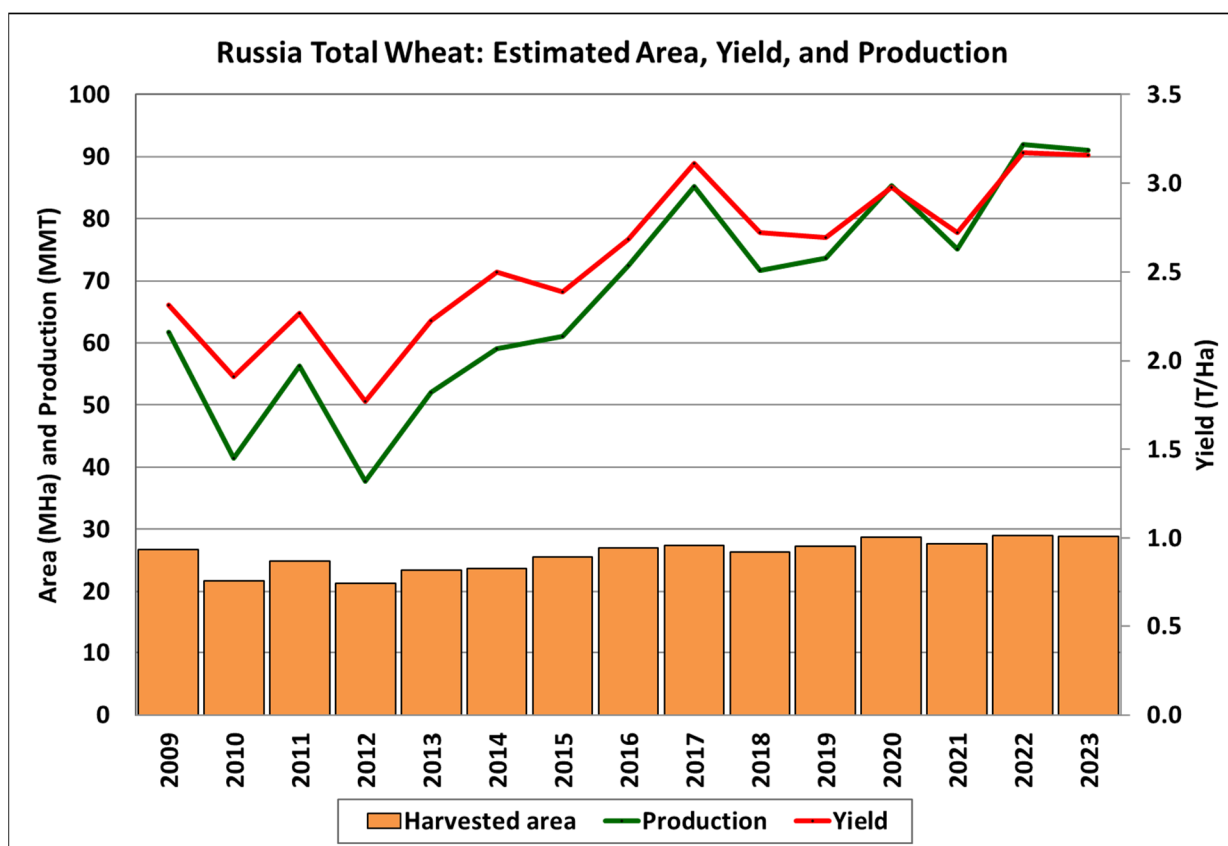
August, resulting in unseasonably poor growing conditions in the Northeast, disrupting the normal growth of rice during the critical stages of heading and flowering. According to FAS/Beijing some rice fields in northern and western Jilin, southern Heilongjiang, and northwestern Liaoning were severely damaged by floods. However, higher production due to relatively better growing conditions in the South and other traditional rice regions in the lower Yangtze valley including Sichuan, Hunan, Jiangxi, Hubei, and Anhui provinces managed to minimize the magnitude of losses in the Northeast. These provinces account for approximately 56 mmt or 39 percent of total China rice. *(For more information, contact [Dath.Mita@usda.gov](mailto:Dath.Mita@usda.gov).)*

### **Russia Wheat: Production Increased by 1 Percent**

Russia wheat production for marketing year (MY) 2023/24 is estimated at 91.0 million metric tons (mmt), up 1 percent from last month, but down 1 percent from last year, and up 14 percent from the 5-year average. The estimate includes 64.0 mmt of winter wheat and 27.0 mmt of spring wheat. Total wheat yield is estimated at 3.16 metric tons per hectare (t/ha), up 2 percent from last month, almost unchanged relative to last year, and up 11 percent from the 5-year average. Total harvested area is estimated at 28.8 million hectares (mha), down 1 percent from last month and last year, and up 4 percent from the 5-year average.

The month-to-month revision is based on preliminary data from the Russian statistical agency (Rosstat). The production change is a result of assessing the harvested areas and yields of both the spring and the winter crops. The Rosstat report indicates minimal winter wheat area loss, but approximately 3.6 percent abandonment of the spring wheat area; this is anticipated given the overall unfavorable weather, which impacted some of the major spring wheat growing regions this season, including the Urals and Siberia. Despite the weather abnormalities, however, the report suggests higher yield for the spring crop than initially anticipated.

USDA's crop forecasts for Russia exclude estimated output from Crimea. During the season USDA's numbers are derived assuming average area and production for Crimea. According to Rosstat, Crimea produced 1,345,000 tons of wheat from an area of 349,000 hectares this season; the reported production for MY 2023/24 is about twice the 5-year pre-war average (713,000 tons).



Sources: USDA PSD Online, FAS Forecast (2023)

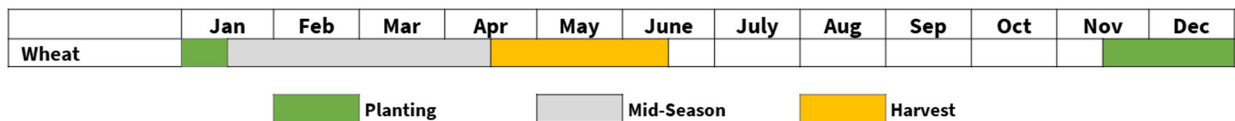
Winter wheat typically accounts for about 70 percent of total production, and it is grown primarily in the European part of Russia. Spring wheat, which accounts for about 30 percent of total production, is mainly planted in the regions bordering Kazakhstan: the Volga, Urals, and Siberia Districts of Russia.

Area, yield, and production estimates for Russia winter wheat and spring wheat are available on PSD Online. Select “Downloadable Data Sets” and open the zipped file for “Russia Wheat; Winter/Spring Area & Production” (*For more information, please contact [Iliana.Mladenova@usda.gov](mailto:Iliana.Mladenova@usda.gov).*)

### Saudi Arabia Wheat: Area and Production Double on Government Incentives

USDA estimates Saudi Arabia wheat production for marketing year (MY) 2023/24 at 1.2 million metric tons (mmt), up 100 percent from last month, 92 percent from last year, and 222 percent above the 5-year average. Harvested area is estimated at 200,000 hectares, up 233 percent from last month, 100 percent from last year and 227 percent above the 5-year average. Yield is forecast at 6.00 metric tons per hectare, down 40 percent from last month, 4 percent from last year, and 2 percent below the 5-year average.

## Saudi Arabia Wheat Crop Calendar



Source: USDA Foreign Agricultural Service

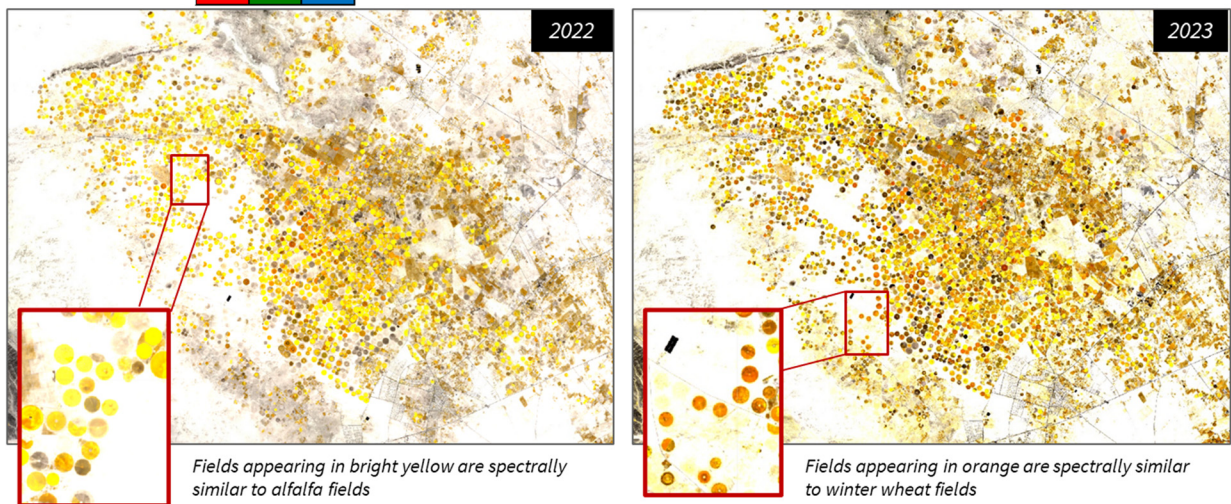
Wheat production increased significantly for the MY 2023/24 season, as farmers capitalized on high prices from the General Food Security Authority (GFSA), the government agency charged with all domestic and imported grain procurement. Saudi Arabia increased its purchase price for domestic wheat in recent years to increase grain production and improve food security. The GFSA purchased 1.2 mmt of domestically grown wheat in 2023. Increased wheat production is expected to continue in the coming years as long as the government purchase price remains high and profitable enough to compete with alfalfa, the chief competing crop.

### Irrigated Fields (Ha'il Province, Saudi Arabia) Red Edge Visualization

March 20 to April 10, 2022 vs 2023 | Image Center: (43.7211, 26.2764)



Bands Displayed:



Source: Copernicus, Sentinel-2 (20m) false-color imagery

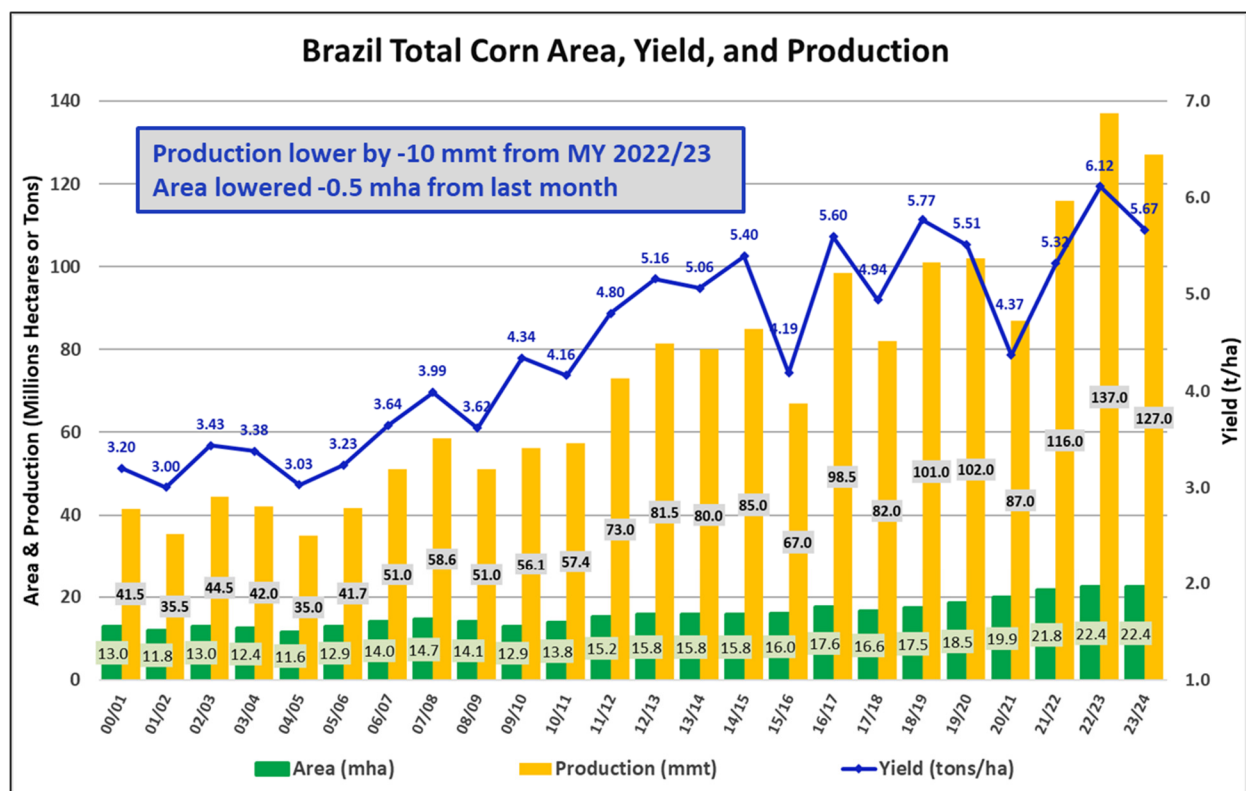
USDA analyzed satellite imagery from the spring of 2022 and 2023 to assess changes in wheat planting, in light of the GFSA announcement of increased domestic purchases. Planting season begins in November and runs through January, with harvest running from April through the beginning of June. Analysis of satellite imagery from March and early April is useful for distinguishing between fully-grown wheat and alfalfa. As the wheat crop reaches maturity in the spring, the spectral signatures of alfalfa and wheat differ enough in the near-infrared portion of the electromagnetic spectrum to differentiate the two crops in the imagery. The analysis revealed a significant year-over-year increase in wheat cultivation for the 2023 season, corroborating the report of increased domestic wheat purchases by the GFSA. As depicted in the graphic above from the Ha'il Province in northern Saudi Arabia, wheat appears in shades of orange, and alfalfa appears in shades of bright yellow. There is more orange in the image from 2023 on the right than in 2022



on the left, indicating more wheat area in 2023. This pattern was observed in most of the agricultural regions of the country. (For more information, please contact [Aaron.Mulhollen@usda.gov](mailto:Aaron.Mulhollen@usda.gov).)

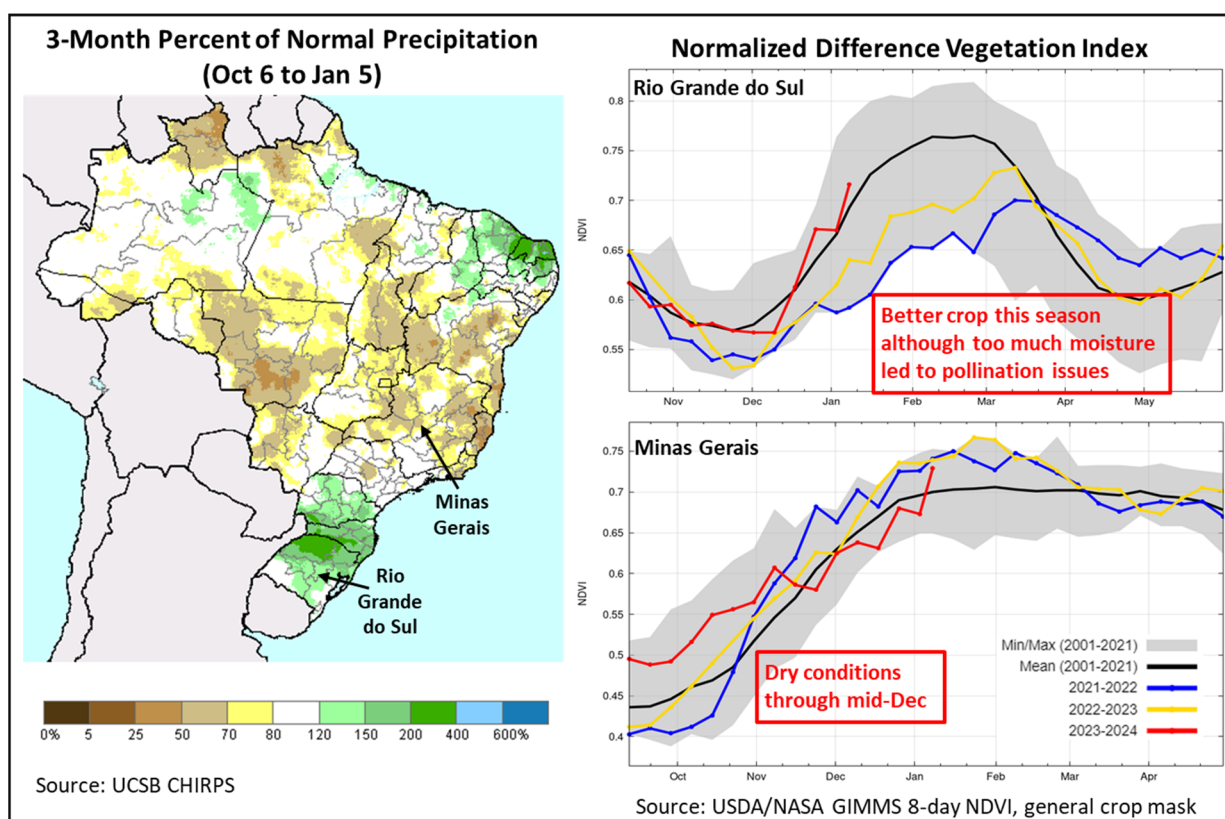
### Brazil Corn: Lower Second Crop Area Expectations Reduce Production for MY 2023/24

Brazil total corn production for marketing year (MY) 2023/24 is forecast at 127.0 million metric tons (mmt), down 2.0 mmt (2 percent) from last month, and lower by 10.0 mmt (7 percent) from last year's record crop. Total harvested area, for all three corn crops, was revised down to 22.4 million hectares (mha), lower by 0.5 mha (2 percent) from last month, and unchanged from last year's record area. Yield increased slightly to 5.67 tons per hectare, less than 1 percent higher from last month, 7 percent below the record MY 2022/23 yield, and 2 percent above the 10-year trend yield.



Source: USDA PSD Online

Total corn area largely depends on *safrinha* (or second crop) corn area which farmers began planting this month following the early soybean harvest. Last year, *safrinha* area was 17.2 million hectares or 78 percent of total corn area, while this year's *safrinha* area is currently forecast at 16.4 million hectares or 4.5 percent less than last year (per the *Companhia Nacional de Abastecimento*, CONAB). While there is still uncertainty among industry forecasters regarding the *safrinha* area, expectations are pessimistic due to low domestic corn prices, and high transport costs in central Brazil where most of the *safrinha* corn is grown.

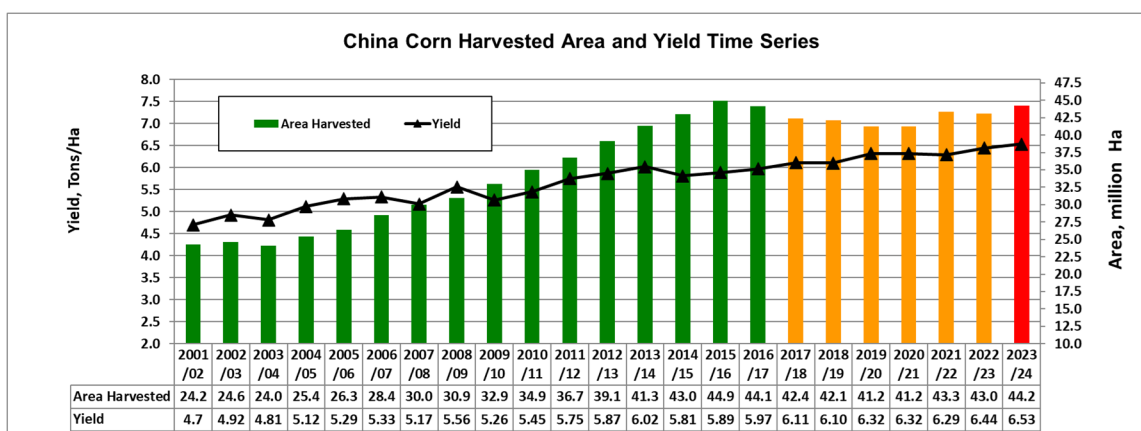


The first crop corn area (about 21 percent of total corn area) was reduced further by CONAB in their last report; most notably in Minas Gerais by 100,000 hectares. Planting continues to be delayed in the northeastern states because of low precipitation volumes. Yield potential for the first crop is lower due to a combination of high temperatures and dryness in eastern Brazil, and excess moisture in the southern states of Rio Grande do Sul and Santa Catarina (roughly 30 percent of first crop production). Record rainfall in southern Brazil occurred during critical reproductive stages and caused pollination failure in some regions. Satellite imagery in early January shows improving vegetation conditions due to drier weather in the south and more rain in the northeast.

As the *safrinha* planting gets underway, rains have normalized over the last month in the center-west, improving soil moisture. This crop will need precipitation to extend into late May to reach its full potential. (For more information, please contact [Sunita.Yadav-Pauletti@usda.gov](mailto:Sunita.Yadav-Pauletti@usda.gov))

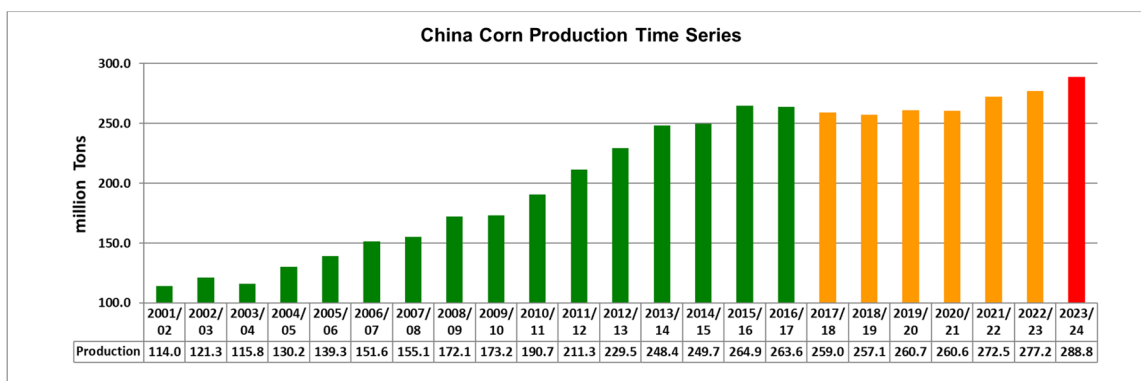
### China Corn: Record Production and Yield Based on Harvest Results

China corn production for marketing year (MY) 2023/24 is estimated at a record 288.8 million metric tons (mmt), up 11.8 million or 4 percent from last month, up 4 percent from last year and 9 percent above the 5-year average. Yield is estimated at a record 6.53 metric tons per hectare (t/ha), up 1 percent from last month, up 1 percent from last year and 4 percent from the 5-year average. Area is estimated at 44.2 million hectares (mha), up 1.2 mha or 3 percent from last month, and up 1.1 mha or approximately 3 percent from last year.



Source: USDA PSD Online

Approximately 75 percent of China's corn is used for feed. Farmers across the major corn production regions have been encouraged to boost production. In recent years there have been marginal increases in corn area in the major production provinces of Heilongjiang, Jilin, Shandong, Henan, Inner Mongolia, and Hebei. The current estimate was confirmed by China's National Bureau of Statistics (NBS) grain production data published in December 2023. Favorable growing conditions and changes in agricultural policy contributed to a record corn crop. Farmers were encouraged by policies, such as, the reversal of the past efforts to reduce corn area, increasing crop rotation of grain crops, targeted incentives, and subsidies to corn processors.



Source: USDA PSD Online

The corn crop harvest is typically completed in October. The MY 2023/24 season was generally characterized by favorable growing conditions across the major corn belt in the northeast and north central plains. The Northeast provinces of Heilongjiang, Jilin, and Inner Mongolia along with the North China Plain provinces of Shandong and Henan, typically account for two-thirds of national production; these areas experienced ideal weather conditions for a significant portion of the growing season. The conditions facilitated rapid planting and crop establishment resulting in favorable corn yield expectations. The model-based corn crop outlook for the provinces of Heilongjiang, Jilin, and Inner Mongolia indicated yield outcomes above the long-term median yield. In the southeast however, there were some yield variations across the major corn production regions. The major production regions in the Northeast experienced favorable rainfall and soil moisture conditions throughout the season, thereby, significantly offsetting low productivity in Southeast China, boosting the national production. *(For more information, please contact [Dath.Mita@usda.gov](mailto:Dath.Mita@usda.gov).)*



**World Agricultural Production  
U.S. Department of Agriculture**

Foreign Agricultural Service / Global Market Analysis  
International Production Assessment Division (IPAD)

Ag Box 1051, Room 4630, South Building

Washington, DC 20250-1051

<https://ipad.fas.usda.gov/>

Telephone: (202) 720-1662

Fax: (202) 720-1158

This report uses information from the Foreign Agricultural Service's (FAS) global network of agricultural attachés and counselors, official statistics of foreign governments and other foreign source materials, and the analysis of economic data and satellite imagery. Estimates of foreign area, yield, and production are from the International Production Assessment Division, FAS, and are reviewed by USDA's Inter-Agency Commodity Estimates Committee. Estimates of U.S. area, yield, and production are from USDA's National Agricultural Statistics Service. Numbers within the report may not add to totals because of rounding. This report reflects official USDA estimates released in the World Agricultural Supply and Demand Estimates (WASDE-584), January 12, 2024.

**Printed copies are available from the National Technical Information Service. Download an order form at [http://www.ntis.gov/products/specialty/usda/fas\\_a-g.asp](http://www.ntis.gov/products/specialty/usda/fas_a-g.asp), or call NTIS at 1-800-363-2068.**

The FAS International Production Assessment Division prepared this report. The next issue of World Agricultural Production will be released after 12:00 p.m. Eastern Time, February 8, 2024.

**Conversion Table**

Metric tons to bushels

Wheat, soybeans	=	MT * 36.7437
Corn, sorghum, rye	=	MT * 39.36825
Barley	=	MT * 45.929625
Oats	=	MT * 68.894438

Metric tons to 480-lb bales

Cotton	=	MT * 4.592917
--------	---	---------------

Metric tons to hundredweight

Rice	=	MT * 22.04622
------	---	---------------

Area & weight

1 hectare	=	2.471044 acres
1 kilogram	=	2.204622 pounds



For further information, contact:  
**U.S. Department of Agriculture**  
**Foreign Agricultural Service**  
**Global Market Analysis**  
International Production Assessment Division  
Ag Box 1051, Room 4630, South Building  
Washington, DC 20250-1051

Telephone: (202) 720-1662

Fax: (202) 720-1158

---

## **GENERAL INFORMATION**

Senior Director	Ronald Frantz	202-720-4056	ronald.frantz@usda.gov
Director	Robert Tetrault	202-720-1071	robert.tetrault@usda.gov
Administrative Assistant	Vacant		
USDA Remote Sensing Advisor	Vacant		
Sr. Analyst/Technical Lead	Curt Reynolds, Ph.D.	202-690-0134	curt.reynolds@usda.gov
Sr. Analyst/ Satellite Imagery	Dath Mita, Ph.D.	202-720-7339	dath.mita@usda.gov
Archives Manager/Technical Lead			
Sr. Analyst/Technical Lead	Jim Crutchfield	202-690-0135	james.crutchfield@usda.gov
GIS Mapping/Imagery Analyst	Lisa Colson	202-720-6652	lisa.colson@usda.gov
WAP Coordinators	Ifeoma Collins	202-720-0240	ifeoma.collins@usda.gov
	Shannon Moyo		shannon.moyo@usda.gov

## **COUNTRY- AND REGION-SPECIFIC INFORMATION**

South America, Argentina, Venezuela, and Colombia	Katie McGaughey	202-720-9210	katie.mcgaughey@usda.gov
Western and Central Europe, and North Africa	Bryan Purcell	202-690-0138	bryan.purcell@usda.gov
Russia, Ukraine, Kazakhstan, Moldova, and Belarus	Iliana Mladenova, Ph.D.	202-690-2315	iliana.mladenova@usda.gov
South Asia, Sri Lanka	Arnella Trent	202-720-0881	arnella.trent@usda.gov
Bangladesh, India, and Nepal			
East Asia, China, and Japan	Dath Mita, Ph.D.	202-720-7339	dath.mita@usda.gov
Sub-Saharan Africa,	Curt Reynolds, Ph.D.	202-690-0134	curt.reynolds@usda.gov
Nigeria and South Africa			
S.E. Asia, Indonesia, Thailand, Malaysia, Cambodia and Vietnam	Justin Jenkins	202-720-0419	justin.jenkins@usda.gov
Central America, Mexico, and Western United States	Ifeoma Collins	202-720-0240	ifeoma.collins@usda.gov
Australia, New Zealand, Pakistan	Jim Crutchfield	202-690-0135	james.crutchfield@usda.gov
Papua New Guinea and South Pacific Islands			
Middle East, Central Asia, Afghanistan	Aaron Mulhollen	202-690-0131	aaron.mulhollen@usda.gov
Iraq, Iran, and Syria			
Canada, Caribbean, Eastern United States	Shannon Moyo		shannon.moyo@usda.gov
Brazil	Sunita Yadav-Pauletti, Ph.D.		sunita.yadav-pauletti@usda.gov





The Foreign Agricultural Service (FAS) updates its production, supply and distribution (PSD) database for cotton, oilseeds, and grains at 12:00 p.m. on the day the *World Agricultural Supply and Demand Estimates* (WASDE) report is released. This circular is released by 12:15 p.m.

### **FAS Reports and Databases:**

#### **World Agricultural Production**

Current: <https://www.fas.usda.gov/data/world-agricultural-production>

Archive: <https://usda.library.cornell.edu/concern/publications/5q47rn72z?locale=en>

USDA's Foreign Agricultural Service (FAS) publishes a monthly report on crop acreage, yield and production in major countries worldwide. Sources include reporting from FAS's worldwide offices, official statistics of foreign governments, and analysis of economic data and satellite imagery. The reports reflect official USDA estimates released in the monthly *World Agricultural Supply and Demand Estimates* (WASDE).

#### **World Markets and Trade**

Current: <https://www.fas.usda.gov/data>

Archive:

[https://usda.library.cornell.edu/catalog?f%5Bmember\\_of\\_collections\\_ssim%5D%5B%5D=Foreign+Agricultural+Service&locale=en](https://usda.library.cornell.edu/catalog?f%5Bmember_of_collections_ssim%5D%5B%5D=Foreign+Agricultural+Service&locale=en)

USDA's Foreign Agricultural Service (FAS) publishes monthly and quarterly reports which include data on U.S. and global trade, production, consumption and stocks, as well as analysis of developments affecting world trade in oilseeds, grains, cotton, livestock and poultry. The reports reflect official USDA estimates released in the monthly *World Agricultural Supply and Demand Estimates* (WASDE).

#### **Global Agricultural Information Network (GAIN)**

<https://gain.fas.usda.gov/>

USDA's Foreign Agricultural Service (FAS) provides timely reports on foreign markets through the Global Agriculture Information Network (GAIN) database. An average of 2,000 reports are added each year, with reports going back to 1995. GAIN reports are compiled by FAS' global market intelligence network, which includes FAS foreign service officers and locally engaged staff in over 90 overseas offices world-wide. They provide on-the-ground intelligence, insight, and analysis on nearly 200 countries, delivering information on foreign agricultural markets, crop conditions, and agro-political dynamics of interest to U.S. agriculture. GAIN reports contain assessments of commodity and trade issues made by USDA staff and are not necessarily statements of official U.S. government policy.

#### **Production, Supply and Distribution (PS&D) Online**

<https://apps.fas.usda.gov/psdonline/app/index.html#/app/home>

PSD Online is the public repository for USDA's Official Production, Supply and Distribution forecast data and reports for key agricultural commodities. PSD Online data are reviewed and updated monthly by an interagency committee chaired by USDA's World Agricultural Outlook Board (WAOB). The committee consist of representatives from Foreign Agricultural Service (FAS), the Economic Research Service (ERS), the Farm Service Agency (FSA), and the Agricultural Marketing Service (AMS).

#### **EU Countries and Russia Wheat: Area and Production Estimates**

<https://apps.fas.usda.gov/psdonline/app/index.html#/app/downloads> (click on PSD Datasets)

USDA's Foreign Agricultural Service (FAS) provides country-level area and production estimates for the nations of the European Union. For Russia, country-level area and production estimates are provided for Winter and Spring wheat. These datasets are reviewed and updated monthly by an interagency committee chaired by USDA's World Agricultural Outlook Board (WAOB) and can be downloaded through PSD datasets on PSD Online.



## FAS Reports and Databases:

### International Production Assessment (IPAD)

<https://ipad.fas.usda.gov/>

USDA's Foreign Agricultural Service (FAS) maintains a dynamic global crop production portal with key information including *World Agricultural Production* (WAP) briefs, Commodity Intelligence Reports (CIR), geospatial applications, crop production maps at a subnational level and crop calendars for the top-20 producing countries. Additionally, Crop Explorer (<https://ipad.fas.usda.gov/cropexplorer/>) displays rainfall, temperature, evapotranspiration, soil moisture, snow cover, and vegetation conditions in charts and maps.

### USDA and NASA Global Agricultural Monitoring (GLAM)

<https://glam1.gsfc.nasa.gov/>

The USDA and NASA Global Agricultural Monitoring (GLAM) system provides near real-time and science quality Moderate Resolution Imaging Spectroradiometer (MODIS) Normalized Difference Vegetation Index (NDVI) from the satellites Terra and Aqua. The public can view and retrieve MODIS 8-day composited, global NDVI satellite imagery and time series data. GLAM was developed by NASA's Global Inventory Modeling and Mapping Studies (GIMMS) group for USDA's Foreign Agricultural Service.

### Global Agricultural and Disaster Assessment System (GADAS)

<https://geo.fas.usda.gov/GADAS/index.html>

USDA's Foreign Agricultural Service (FAS) provides the Global Agricultural and Disaster Assessment System (GADAS), a web-based Geographic Information System (GIS) tool which integrates a vast array of highly detailed earth observation data streams, particularly targeted towards agricultural and disaster assessment analysis. GADAS is an interactive website which provides analysts with a wide variety of routine geospatial products (maps, charts, tables) they require for comprehensive situational investigations and recurring assessments.

### Export Sales Reporting

<https://apps.fas.usda.gov/esrquery/>

USDA's Export Sales Reporting Program monitors U.S. agricultural export sales on a daily and weekly basis. Export sales reporting provides a constant stream of up-to-date market information for 40 U.S. agricultural commodities sold abroad. The weekly U.S. Export Sales report is the most currently available source of U.S. exports sales data. The data is used to analyze overall levels of export demand, determine where markets exit, and assess the relative position of U.S. commodities in foreign markets.

### Global Agricultural Trade System (GATS)

<https://apps.fas.usda.gov/gats/default.aspx>

The Global Agricultural Trade System (GATS) is a searchable database containing monthly U.S. Census Bureau trade data organized by agricultural commodity and agricultural related product groups. Trade data is searchable by partner countries and partner groups. Historical U.S. agricultural trade data is available back to 1967. In addition, U.N. trade statistics (UN Comtrade) may be queried through GATS. UN trade data is available for nearly 200 countries or areas, dating from the inception of the Harmonized System (HS) of trade codes in 1989 to present. The database is continuously updated. U.S. trade data is updated monthly according to the U.S. Census Bureau's reporting system. UN Comtrade data are updated in GATS after nationally submitted data to the UN are standardized by the UN Statistical Division and added to the UN Comtrade database.

## Other USDA Reports:

World Agricultural Supply and Demand Estimates (WASDE):

<http://www.usda.gov/oce/commodity/wasde/>

Economic Research Service:

<http://www.ers.usda.gov/topics/crops>

National Agricultural Statistics Service:

<http://www.nass.usda.gov/Publications/>

**Table 01 World Crop Production Summary**

**Million Metric Tons**

Commodity	World -	Total Foreign	North America			Former Soviet		Europea n	Asia (WAP)					South America		Selected Other			All Others	
			United States	Canada -	Mexico -	Russia -	Ukraine -		China -	India -	Indo- nesia	Paki- stan	Thai- land	Argen- tina	Brazil -	Aus- tralia	South Africa	Turkey -		
	---Million metric tons---																			
Wheat																				
2021/22	780.0	735.2	44.8	22.4	3.3	75.2	33.0	nr	136.9	109.6	0.0	27.5	0.0	22.2	7.7	36.2	2.3	16.0	243.0	
2022/23 prel.	789.2	744.3	44.9	34.3	3.6	92.0	21.5	nr	137.7	104.0	0.0	26.4	0.0	12.6	10.6	40.5	2.1	17.3	241.7	
2023/24 proj.																				
Dec	783.0	733.7	49.3	32.0	3.5	90.0	22.5	nr	137.0	110.6	0.0	28.0	0.0	15.0	8.4	25.5	2.2	19.5	239.6	
Jan	784.9	735.6	49.3	32.0	3.5	91.0	23.4	nr	136.6	110.6	0.0	28.0	0.0	15.0	8.4	25.5	2.2	19.5	240.0	
Coarse Grains																				
2021/22	1,500.7	1,104.5	396.3	25.1	32.8	38.5	53.5	nr	280.9	51.4	12.7	11.0	5.4	58.6	120.6	19.2	16.6	11.6	366.5	
2022/23 prel.	1,446.0	1,089.6	356.4	30.5	33.9	44.1	33.9	nr	285.5	56.8	12.9	9.9	5.3	40.8	141.6	18.8	17.5	14.8	343.3	
2023/24 proj.																				
Dec	1,502.0	1,101.7	400.3	27.2	31.3	43.2	37.4	nr	285.3	52.8	12.9	11.0	5.5	63.3	134.3	13.3	17.3	16.8	350.1	
Jan	1,513.8	1,111.0	402.9	27.2	31.3	42.9	37.6	nr	297.1	53.5	12.9	11.0	5.5	63.3	132.3	13.3	17.3	16.8	348.8	
Rice, Milled																				
2021/22	513.1	507.0	6.1	0.0	0.2	0.7	0.0	nr	149.0	129.5	34.4	9.3	19.9	0.8	7.3	0.5	0.0	0.5	154.9	
2022/23 prel.	513.0	507.9	5.1	0.0	0.1	0.6	0.0	nr	145.9	135.8	34.0	5.5	20.9	0.8	7.0	0.4	0.0	0.6	156.3	
2023/24 proj.																				
Dec	518.1	511.1	7.0	0.0	0.2	0.7	0.0	nr	149.0	132.0	33.5	9.0	20.0	0.9	7.5	0.5	0.0	0.5	157.3	
Jan	513.5	506.6	6.9	0.0	0.2	0.7	0.0	nr	144.6	132.0	33.5	9.0	20.0	0.9	7.5	0.5	0.0	0.5	157.2	
Total Grains																				
2021/22	2,793.9	2,346.7	447.2	47.5	36.2	114.4	86.6	nr	566.8	290.4	47.1	47.8	25.2	81.6	135.7	56.0	18.9	28.1	764.5	
2022/23 prel.	2,748.2	2,341.7	406.4	64.9	37.6	136.7	55.4	nr	569.2	296.5	46.9	41.8	26.2	54.1	159.2	59.8	19.6	32.6	741.2	
2023/24 proj.																				
Dec	2,803.1	2,346.5	456.6	59.1	34.9	133.9	59.9	nr	571.3	295.4	46.4	48.0	25.5	79.1	150.2	39.4	19.5	36.8	747.0	
Jan	2,812.3	2,353.2	459.1	59.1	34.9	134.7	61.0	nr	578.4	296.1	46.4	48.0	25.5	79.1	148.2	39.4	19.5	36.8	746.1	
Oilseeds																				
2021/22	611.8	480.4	131.3	20.5	0.9	23.1	24.3	nr	62.1	43.2	14.3	3.3	1.0	49.9	135.2	8.7	3.4	3.5	87.2	
2022/23 prel.	634.5	508.8	125.8	25.3	0.9	26.6	19.8	nr	68.1	42.4	14.8	2.7	1.0	31.6	165.0	10.1	3.8	4.0	92.8	
2023/24 proj.																				
Dec	661.0	539.5	121.5	25.9	0.6	27.9	24.0	nr	67.3	40.9	14.9	3.8	1.0	54.4	166.9	7.1	3.8	3.0	97.8	
Jan	660.2	537.8	122.4	25.9	0.6	28.0	24.0	nr	67.9	40.8	14.9	3.8	1.0	56.1	162.9	7.1	3.8	3.1	97.7	
Cotton																				
2021/22	114.5	96.9	17.5	0.0	1.2	0.0	0.0	1.7	26.8	24.3	0.0	6.0	0.0	1.4	10.8	5.9	0.1	3.8	15.0	
2022/23 prel.	116.6	102.1	14.5	0.0	1.6	0.0	0.0	1.6	30.7	26.3	0.0	3.9	0.0	1.5	11.7	5.8	0.1	4.9	14.0	
2023/24 proj.																				
Dec	112.9	100.1	12.8	0.0	0.9	0.0	0.0	1.1	27.0	25.0	0.0	6.7	0.0	1.5	14.6	5.1	0.1	3.2	15.0	
Jan	113.2	100.7	12.4	0.0	0.9	0.0	0.0	1.1	27.5	25.0	0.0	6.7	0.0	1.7	14.6	5.1	0.1	3.2	14.9	

1/ Includes wheat, coarse grains, and rice (milled) shown above.

Table 02 Wheat Area, Yield, and Production

Country / Region	Area (Million hectares)				Yield (Metric tons per hectare)				Production (Million metric tons)				Change in Production			
	2021/22	Prel. 2022/23	2023/24 Proj.		2021/22	Prel. 2022/23	2023/24 Proj.		2021/22	Prel. 2022/23	2023/24 Proj.		From last month		From last year	
			Dec	Jan			Dec	Jan			Dec	Jan	MMT	Percent	MMT	Percent
<b>World</b>	221.94	219.99	223.08	223.04	3.51	3.59	3.51	3.52	780.05	789.17	783.01	784.91	1.90	0.24	-4.26	-0.54
<b>United States</b>	15.03	14.36	15.08	15.08	2.98	3.13	3.27	3.27	44.80	44.90	49.31	49.31	0.00	0.00	4.42	9.84
<b>Total Foreign</b>	206.91	205.63	208.00	207.96	3.55	3.62	3.53	3.54	735.25	744.27	733.69	735.59	1.90	0.26	-8.67	-1.17
<b>European Union</b>	24.29	24.38	24.22	24.22	5.69	5.50	5.55	5.55	138.16	134.19	134.30	134.30	0.00	0.00	0.12	0.09
<b>United Kingdom</b>	1.79	1.81	1.73	1.73	7.81	8.59	8.29	8.29	13.99	15.54	14.30	14.30	0.00	0.00	-1.24	-7.98
<b>Serbia</b>	0.60	0.62	0.73	0.73	5.71	5.16	4.97	4.97	3.40	3.20	3.60	3.60	0.00	0.00	0.40	12.50
<b>China</b>	23.57	23.52	23.70	23.63	5.81	5.86	5.78	5.78	136.95	137.72	137.00	136.59	-0.41	-0.30	-1.13	-0.82
<b>South Asia</b>																
India	31.13	30.46	31.40	31.40	3.52	3.41	3.52	3.52	109.59	104.00	110.55	110.55	0.00	0.00	6.55	6.30
Pakistan	9.17	9.00	8.86	8.86	3.00	2.93	3.16	3.16	27.46	26.40	28.00	28.00	0.00	0.00	1.60	6.06
Afghanistan	2.05	1.86	2.35	2.35	1.96	2.05	2.20	2.20	4.02	3.80	5.17	5.17	0.00	0.00	1.37	35.98
Nepal	0.72	0.72	0.72	0.72	2.99	2.98	2.90	2.90	2.15	2.15	2.09	2.09	0.00	0.00	-0.06	-2.56
<b>Former Soviet Union - 12</b>																
Russia	27.63	29.00	29.00	28.80	2.72	3.17	3.10	3.16	75.16	92.00	90.00	91.00	1.00	1.11	-1.00	-1.09
Russia Winter	15.22	16.30	15.20	15.30	3.43	4.17	4.24	4.18	52.19	68.00	64.50	64.00	-0.50	-0.78	-4.00	-5.88
Russia Spring	12.41	12.70	13.80	13.50	1.85	1.89	1.85	2.00	22.96	24.00	25.50	27.00	1.50	5.88	3.00	12.50
Ukraine	7.41	5.60	5.00	5.05	4.45	3.84	4.50	4.63	33.01	21.50	22.50	23.40	0.90	4.00	1.90	8.84
Kazakhstan	12.72	12.81	13.60	13.60	0.93	1.28	0.88	0.88	11.81	16.40	12.00	12.00	0.00	0.00	-4.40	-26.85
Uzbekistan	1.24	1.40	1.40	1.40	4.83	4.48	4.50	4.50	5.99	6.27	6.30	6.30	0.00	0.00	0.03	0.48
Belarus	0.65	0.68	0.68	0.68	3.54	3.48	3.38	3.38	2.30	2.35	2.30	2.30	0.00	0.00	-0.05	-2.13
<b>Canada</b>	9.20	10.08	10.68	10.68	2.44	3.41	2.99	2.99	22.42	34.34	31.95	31.95	0.00	0.00	-2.38	-6.93
<b>South America</b>																
Argentina	6.55	5.50	5.50	5.50	3.38	2.28	2.73	2.73	22.15	12.55	15.00	15.00	0.00	0.00	2.45	19.52
Brazil	2.74	3.09	3.47	3.47	2.81	3.43	2.42	2.42	7.70	10.60	8.40	8.40	0.00	0.00	-2.20	-20.75
<b>Australia</b>	12.73	13.05	12.50	12.50	2.85	3.11	2.04	2.04	36.24	40.55	25.50	25.50	0.00	0.00	-15.05	-37.11
<b>Africa</b>																
Egypt	1.44	1.45	1.35	1.35	6.85	6.55	6.57	6.57	9.84	9.50	8.87	8.87	0.00	0.00	-0.63	-6.63
Morocco	2.86	2.50	2.55	2.55	2.64	1.08	1.63	1.63	7.54	2.70	4.16	4.16	0.00	0.00	1.46	54.07
Algeria	2.08	2.08	2.08	2.08	1.20	1.78	1.30	1.30	2.50	3.70	2.70	2.70	0.00	0.00	-1.00	-27.03
Ethiopia	1.95	1.90	1.80	1.80	2.83	3.05	2.89	2.89	5.52	5.80	5.20	5.20	0.00	0.00	-0.60	-10.34
<b>Middle East</b>																
Turkey	7.05	6.80	7.20	7.20	2.27	2.54	2.71	2.71	16.00	17.25	19.50	19.50	0.00	0.00	2.25	13.04
Iran	6.00	6.20	6.20	6.20	2.00	2.13	2.26	2.26	12.00	13.20	14.00	14.00	0.00	0.00	0.80	6.06
Iraq	2.00	2.00	2.20	2.20	1.75	1.50	1.91	1.91	3.50	3.00	4.20	4.20	0.00	0.00	1.20	40.00
Syria	1.57	1.18	1.20	1.20	1.25	1.31	2.00	2.00	1.95	1.55	2.40	2.40	0.00	0.00	0.85	54.64
<b>Mexico</b>	0.55	0.59	0.56	0.56	6.00	6.07	6.23	6.23	3.28	3.57	3.46	3.46	0.00	0.00	-0.12	-3.28
<b>Others</b>	7.26	7.36	7.34	7.52	2.84	2.78	2.76	2.75	20.63	20.45	20.24	20.65	0.41	2.03	0.21	1.01

**Table 03 Total Coarse Grain Area, Yield, and Production**

Country / Region	Area (Million hectares)				Yield (Metric tons per hectare)				Production (Million metric tons)				Change in Production			
	2021/22	Prel. 2022/23	2023/24 Proj.		2021/22	Prel. 2022/23	2023/24 Proj.		2021/22	Prel. 2022/23	2023/24 Proj.		From last month		From last year	
			Dec	Jan			Dec	Jan			Dec	Jan	MMT	Percent	MMT	Percent
<b>World</b>	343.48	334.42	339.13	339.46	4.37	4.32	4.43	4.46	1,500.75	1,446.03	1,501.99	1,513.85	11.86	0.79	67.82	4.69
<b>United States</b>	38.21	35.18	39.28	38.99	10.37	10.13	10.19	10.33	396.30	356.45	400.27	402.89	2.62	0.65	46.44	13.03
<b>Total Foreign</b>	305.27	299.24	299.85	300.47	3.62	3.64	3.67	3.70	1,104.45	1,089.58	1,101.72	1,110.96	9.24	0.84	21.38	1.96
<b>China</b>	45.77	45.52	45.44	46.65	6.14	6.27	6.28	6.37	280.85	285.50	285.30	297.14	11.84	4.15	11.64	4.08
<b>European Union</b>	27.70	26.56	25.96	25.88	5.59	5.01	5.26	5.21	154.84	133.04	136.56	134.78	-1.78	-1.30	1.74	1.31
<b>United Kingdom</b>	1.43	1.34	1.36	1.36	5.88	6.46	5.96	5.96	8.41	8.67	8.13	8.13	0.00	0.00	-0.54	-6.25
<b>South America</b>																
Brazil	23.37	24.10	24.77	24.27	5.16	5.88	5.42	5.45	120.62	141.60	134.33	132.33	-2.00	-1.49	-9.28	-6.55
Argentina	9.62	9.14	9.48	9.28	6.10	4.47	6.68	6.82	58.64	40.84	63.28	63.28	0.00	0.00	22.44	54.95
<b>Former Soviet Union - 12</b>																
Russia	14.01	13.60	13.13	13.10	2.75	3.25	3.29	3.28	38.54	44.13	43.20	42.94	-0.26	-0.60	-1.19	-2.70
Ukraine	8.66	6.32	6.02	6.02	6.18	5.37	6.22	6.25	53.51	33.93	37.42	37.62	0.20	0.53	3.70	10.89
Kazakhstan	2.63	2.63	2.95	2.95	1.43	1.79	1.39	1.39	3.76	4.71	4.10	4.10	0.00	0.00	-0.62	-13.08
Belarus	0.99	1.03	1.05	1.05	3.05	3.11	3.09	3.09	3.00	3.20	3.23	3.23	0.00	0.00	0.03	0.94
<b>Africa</b>																
Nigeria	13.70	13.50	13.40	13.40	1.56	1.59	1.54	1.54	21.40	21.51	20.70	20.70	0.00	0.00	-0.81	-3.75
South Africa	3.19	3.13	3.20	3.20	5.22	5.61	5.42	5.42	16.64	17.53	17.35	17.35	0.00	0.00	-0.18	-1.02
Tanzania	5.74	5.30	5.30	5.30	1.47	1.36	1.36	1.36	8.45	7.23	7.23	7.23	0.00	0.00	0.00	0.00
Burkina Faso	4.20	4.20	4.20	4.20	1.00	1.13	1.13	1.13	4.20	4.73	4.75	4.75	0.00	0.00	0.02	0.38
Ethiopia	5.60	5.42	5.65	5.65	3.10	3.18	3.24	3.24	17.37	17.20	18.30	18.30	0.00	0.00	1.10	6.38
Egypt	1.17	1.16	1.18	1.18	7.11	7.13	6.81	6.81	8.31	8.30	8.06	8.06	0.00	0.00	-0.24	-2.89
Mali	5.16	4.80	4.80	4.80	1.23	1.49	1.42	1.42	6.34	7.15	6.80	6.80	0.00	0.00	-0.35	-4.87
<b>India</b>	22.84	23.90	24.23	24.43	2.25	2.38	2.18	2.19	51.39	56.78	52.81	53.51	0.70	1.33	-3.26	-5.75
<b>Southeast Asia</b>																
Indonesia	3.90	3.95	4.00	4.00	3.26	3.27	3.23	3.23	12.70	12.90	12.90	12.90	0.00	0.00	0.00	0.00
Philippines	2.56	2.50	2.57	2.57	3.26	3.32	3.27	3.27	8.34	8.30	8.40	8.40	0.00	0.00	0.10	1.20
Vietnam	0.90	0.89	0.83	0.83	4.92	4.99	4.94	4.94	4.45	4.42	4.10	4.10	0.00	0.00	-0.32	-7.30
Thailand	1.23	1.21	1.28	1.28	4.36	4.35	4.27	4.27	5.35	5.25	5.45	5.45	0.00	0.00	0.20	3.81
<b>Mexico</b>	8.88	8.64	8.30	8.29	3.69	3.92	3.77	3.78	32.79	33.88	31.31	31.31	-0.01	-0.02	-2.57	-7.59
<b>Canada</b>	5.91	5.74	5.24	5.24	4.25	5.32	5.19	5.19	25.12	30.54	27.16	27.16	0.00	0.00	-3.37	-11.04
<b>Australia</b>	6.69	5.69	5.63	5.63	2.87	3.31	2.37	2.37	19.22	18.84	13.34	13.34	0.00	0.00	-5.50	-29.18
<b>Middle East</b>																
Turkey	4.46	4.55	4.57	4.57	2.60	3.25	3.67	3.67	11.58	14.77	16.77	16.77	0.00	0.00	2.00	13.53
Iran	1.91	1.86	1.86	1.86	2.16	2.38	2.38	2.38	4.12	4.42	4.42	4.42	0.00	0.00	0.00	-0.02
<b>Others</b>	73.05	72.60	73.49	73.51	1.70	1.66	1.72	1.73	124.52	120.23	126.34	126.88	0.54	0.42	6.65	5.53

World and Selected Countries and Regions; Coarse Grain includes: Barley, Corn, Millet, Mixed Grains, Oats, Rye and Sorghum



**Table 04 Corn Area, Yield, and Production**

Country / Region	Area (Million hectares)				Yield (Metric tons per hectare)				Production (Million metric tons)				Change in Production			
	Prel.		2023/24 Proj.		Prel.		2023/24 Proj.		Prel.		2023/24 Proj.		From last month		From last year	
	2021/22	2022/23	Dec	Jan	2021/22	2022/23	Dec	Jan	2021/22	2022/23	Dec	Jan	MMT	Percent	MMT	Percent
World	206.16	200.40	203.52	204.00	5.90	5.77	6.00	6.06	1,215.90	1,155.63	1,222.07	1,235.73	13.66	1.12	80.10	6.93
United States	34.39	31.85	35.25	35.01	11.09	10.89	10.98	11.13	381.47	346.74	386.97	389.69	2.73	0.70	42.96	12.39
Total Foreign	171.76	168.55	168.27	168.99	4.86	4.80	4.96	5.01	834.43	808.89	835.10	846.04	10.94	1.31	37.14	4.59
China	43.32	43.07	43.00	44.22	6.29	6.44	6.44	6.53	272.55	277.20	277.00	288.84	11.84	4.28	11.64	4.20
South America																
Brazil	21.80	22.40	22.90	22.40	5.32	6.12	5.63	5.67	116.00	137.00	129.00	127.00	-2.00	-1.55	-10.00	-7.30
Argentina	7.10	6.70	7.10	6.90	6.97	5.07	7.75	7.97	49.50	34.00	55.00	55.00	0.00	0.00	21.00	61.76
Bolivia	0.41	0.44	0.43	0.43	2.42	2.52	2.62	2.62	0.99	1.10	1.13	1.13	0.00	0.00	0.03	2.27
European Union	9.23	8.84	8.28	8.28	7.75	5.93	7.26	7.26	71.55	52.40	60.10	60.10	0.00	0.00	7.70	14.69
Africa																
South Africa	3.00	2.95	3.00	3.00	5.38	5.81	5.60	5.60	16.14	17.10	16.80	16.80	0.00	0.00	-0.30	-1.75
Nigeria	6.00	5.80	5.70	5.70	2.12	2.20	2.11	2.11	12.75	12.74	12.00	12.00	0.00	0.00	-0.74	-5.77
Ethiopia	2.53	2.55	2.56	2.56	3.72	4.00	4.06	4.06	9.40	10.20	10.40	10.40	0.00	0.00	0.20	1.96
Egypt	0.93	0.93	0.95	0.95	8.00	8.00	7.58	7.58	7.44	7.44	7.20	7.20	0.00	0.00	-0.24	-3.23
Tanzania	4.40	4.00	4.00	4.00	1.60	1.48	1.48	1.48	7.04	5.90	5.90	5.90	0.00	0.00	0.00	0.00
Malawi	1.75	1.82	1.79	1.79	2.62	2.05	1.96	1.96	4.58	3.72	3.51	3.51	0.00	0.00	-0.21	-5.57
Zambia	1.41	1.37	1.42	1.42	2.57	1.94	2.30	2.30	3.62	2.65	3.26	3.26	0.00	0.00	0.61	22.95
Kenya	2.17	1.90	2.00	2.00	1.52	1.53	1.60	1.60	3.30	2.90	3.20	3.20	0.00	0.00	0.30	10.34
Uganda	1.10	1.10	1.10	1.10	2.55	2.55	2.55	2.55	2.80	2.80	2.80	2.80	0.00	0.00	0.00	0.00
Zimbabwe	0.96	1.00	1.00	1.00	1.53	1.45	1.50	1.50	1.47	1.45	1.50	1.50	0.00	0.00	0.05	3.23
Former Soviet Union - 12																
Ukraine	5.49	4.05	4.00	4.00	7.68	6.67	7.63	7.63	42.13	27.00	30.50	30.50	0.00	0.00	3.50	12.96
Russia	2.90	2.64	2.58	2.58	5.25	6.00	6.60	6.60	15.23	15.83	17.00	17.00	0.00	0.00	1.17	7.38
South Asia																
India	9.96	10.74	10.00	10.20	3.39	3.54	3.43	3.43	33.73	38.09	34.30	35.00	0.70	2.04	-3.09	-8.10
Pakistan	1.65	1.60	1.65	1.65	6.43	5.83	6.36	6.36	10.64	9.33	10.50	10.50	0.00	0.00	1.17	12.53
Nepal	0.97	0.97	0.97	0.97	2.82	2.82	2.82	2.82	2.72	2.72	2.72	2.72	0.00	0.00	0.00	0.00
Southeast Asia																
Indonesia	3.90	3.95	4.00	4.00	3.26	3.27	3.23	3.23	12.70	12.90	12.90	12.90	0.00	0.00	0.00	0.00
Philippines	2.56	2.50	2.57	2.57	3.26	3.32	3.27	3.27	8.34	8.30	8.40	8.40	0.00	0.00	0.10	1.20
Vietnam	0.90	0.89	0.83	0.83	4.92	4.99	4.94	4.94	4.45	4.42	4.10	4.10	0.00	0.00	-0.32	-7.30
Thailand	1.20	1.18	1.25	1.25	4.42	4.41	4.32	4.32	5.30	5.20	5.40	5.40	0.00	0.00	0.20	3.85
Mexico	7.09	6.89	6.52	6.52	3.77	4.07	3.91	3.91	26.76	28.08	25.50	25.50	0.00	0.00	-2.58	-9.18
Canada	1.46	1.44	1.52	1.52	9.99	10.07	9.92	9.92	14.61	14.54	15.08	15.08	0.00	0.00	0.54	3.69
Turkey	0.54	0.53	0.65	0.65	12.04	12.83	12.62	12.62	6.50	6.80	8.20	8.20	0.00	0.00	1.40	20.59
Others	27.03	26.32	26.52	26.52	2.67	2.55	2.70	2.72	72.21	67.08	71.71	72.10	0.39	0.55	5.02	7.48

World and Selected Countries and Regions

**Table 05 Barley Area, Yield, and Production**

Country / Region	Area (Million hectares)				Yield (Metric tons per hectare)				Production (Million metric tons)				Change in Production			
	2021/22	Prel. 2022/23	2023/24 Proj.		2021/22	Prel. 2022/23	2023/24 Proj.		2021/22	Prel. 2022/23	2023/24 Proj.		From last month		From last year	
			Dec	Jan			Dec	Jan			Dec	Jan	MMT	Percent	MMT	Percent
<b>World</b>	49.78	47.23	47.38	47.33	2.92	3.21	3.03	3.02	145.37	151.62	143.59	142.87	-0.72	-0.50	-8.75	-5.77
<b>United States</b>	0.81	0.98	1.03	1.03	3.25	3.86	3.90	3.90	2.63	3.79	4.03	4.03	0.00	0.00	0.24	6.39
<b>Total Foreign</b>	48.98	46.24	46.35	46.29	2.91	3.20	3.01	3.00	142.74	147.84	139.56	138.84	-0.72	-0.52	-8.99	-6.08
<b>European Union</b>	10.27	10.30	10.34	10.30	5.06	5.02	4.69	4.61	52.01	51.69	48.48	47.50	-0.98	-2.01	-4.19	-8.11
<b>United Kingdom</b>	1.15	1.10	1.13	1.13	6.05	6.69	6.22	6.22	6.96	7.39	7.00	7.00	0.00	0.00	-0.39	-5.21
<b>Former Soviet Union - 12</b>																
Russia	7.69	7.75	7.65	7.63	2.28	2.77	2.68	2.69	17.51	21.50	20.50	20.50	0.00	0.00	-1.00	-4.65
Ukraine	2.68	1.95	1.70	1.70	3.70	3.13	3.62	3.74	9.92	6.10	6.15	6.35	0.20	3.25	0.25	4.10
Kazakhstan	2.16	2.18	2.50	2.50	1.10	1.51	1.08	1.08	2.37	3.29	2.70	2.70	0.00	0.00	-0.59	-17.86
Belarus	0.35	0.40	0.40	0.40	2.86	2.75	2.75	2.75	1.00	1.10	1.10	1.10	0.00	0.00	0.00	0.00
Azerbaijan	0.37	0.38	0.38	0.38	3.07	2.93	2.93	2.93	1.15	1.10	1.10	1.10	0.00	0.00	0.00	0.00
<b>Canada</b>	3.01	2.64	2.70	2.70	2.32	3.79	3.30	3.30	6.98	9.99	8.90	8.90	0.00	0.00	-1.09	-10.92
<b>Australia</b>	5.10	4.13	4.20	4.20	2.81	3.43	2.38	2.38	14.34	14.14	10.00	10.00	0.00	0.00	-4.14	-29.26
<b>Middle East</b>																
Turkey	3.70	3.80	3.70	3.70	1.22	1.95	2.16	2.16	4.50	7.40	8.00	8.00	0.00	0.00	0.60	8.11
Iran	1.70	1.65	1.65	1.65	1.59	1.82	1.82	1.82	2.70	3.00	3.00	3.00	0.00	0.00	0.00	0.00
Iraq	0.60	0.60	0.60	0.60	1.17	1.13	1.33	1.33	0.70	0.68	0.80	0.80	0.00	0.00	0.12	17.65
Syria	1.44	0.90	0.90	0.90	0.18	0.78	1.22	1.22	0.25	0.70	1.10	1.10	0.00	0.00	0.40	57.14
<b>Africa</b>																
Ethiopia	0.96	0.98	0.98	0.98	2.45	2.22	2.46	2.46	2.35	2.18	2.40	2.40	0.00	0.00	0.22	9.89
Morocco	1.49	1.10	1.20	1.20	1.87	0.64	1.13	1.13	2.78	0.70	1.35	1.35	0.00	0.00	0.65	92.86
Algeria	1.03	1.03	1.03	1.03	0.93	1.56	1.00	1.00	0.95	1.60	1.03	1.03	0.00	0.00	-0.58	-35.94
Tunisia	0.28	0.30	0.20	0.20	1.54	1.53	0.85	0.85	0.43	0.46	0.17	0.17	0.00	0.00	-0.29	-63.04
South Africa	0.10	0.10	0.11	0.11	3.52	2.99	3.27	3.27	0.33	0.30	0.36	0.36	0.00	0.00	0.06	19.21
<b>South America</b>																
Argentina	1.34	1.58	1.40	1.40	3.96	2.93	3.57	3.57	5.30	4.62	5.00	5.00	0.00	0.00	0.38	8.23
Uruguay	0.22	0.21	0.18	0.18	4.11	4.25	3.89	3.89	0.92	0.90	0.70	0.70	0.00	0.00	-0.20	-21.96
Brazil	0.11	0.12	0.13	0.13	3.79	3.92	3.96	3.96	0.43	0.48	0.50	0.50	0.00	0.00	0.01	2.70
<b>India</b>	0.59	0.45	0.63	0.63	2.80	3.03	3.05	3.05	1.66	1.37	1.91	1.91	0.00	0.00	0.54	39.53
<b>China</b>	0.51	0.51	0.50	0.50	3.92	3.92	4.00	4.00	2.00	2.00	2.00	2.00	0.00	0.00	0.00	0.00
<b>Mexico</b>	0.35	0.30	0.33	0.33	3.11	2.69	2.92	2.92	1.09	0.80	0.95	0.95	0.00	0.00	0.16	19.50
<b>Afghanistan</b>	0.04	0.06	0.08	0.08	1.63	1.53	1.38	1.38	0.07	0.10	0.11	0.11	0.00	0.00	0.02	15.79
<b>Others</b>	1.74	1.74	1.76	1.77	2.33	2.45	2.42	2.44	4.06	4.26	4.27	4.32	0.06	1.31	0.06	1.43

World and Selected Countries and Regions

**Table 06 Oats Area, Yield, and Production**

Country / Region	Area (Million hectares)				Yield (Metric tons per hectare)				Production (Million metric tons)				Change in Production			
	Prel.		2023/24 Proj.		Prel.		2023/24 Proj.		Prel.		2023/24 Proj.		From last month		From last year	
	2021/22	2022/23	Dec	Jan	2021/22	2022/23	Dec	Jan	2021/22	2022/23	Dec	Jan	MMT	Percent	MMT	Percent
<b>World</b>	9.63	9.33	8.36	8.29	2.36	2.69	2.46	2.34	22.69	25.13	20.55	19.42	-1.12	-5.47	-5.70	-22.69
<b>United States</b>	0.26	0.36	0.34	0.34	2.20	2.35	2.46	2.46	0.58	0.84	0.83	0.83	0.00	0.00	-0.01	-1.08
<b>Total Foreign</b>	9.36	8.97	8.03	7.95	2.36	2.71	2.46	2.34	22.11	24.29	19.72	18.60	-1.12	-5.70	-5.69	-23.44
<b>European Union</b>	2.54	2.34	2.31	2.24	2.94	3.17	2.95	2.63	7.47	7.41	6.81	5.90	-0.91	-13.36	-1.51	-20.37
<b>Former Soviet Union - 12</b>																
Russia	2.17	2.13	1.80	1.80	1.72	2.11	1.94	1.83	3.73	4.50	3.50	3.30	-0.20	-5.71	-1.20	-26.67
Ukraine	0.18	0.15	0.15	0.15	2.61	2.47	2.33	2.33	0.48	0.38	0.35	0.35	0.00	0.00	-0.03	-7.89
Belarus	0.15	0.16	0.16	0.16	2.33	2.42	2.26	2.26	0.35	0.38	0.35	0.35	0.00	0.00	-0.03	-6.67
Kazakhstan	0.20	0.20	0.19	0.19	0.90	1.16	1.16	1.16	0.18	0.23	0.22	0.22	0.00	0.00	-0.01	-3.93
<b>Canada</b>	1.21	1.40	0.82	0.82	2.39	3.73	3.20	3.20	2.90	5.23	2.64	2.64	0.00	0.00	-2.59	-49.56
<b>South America</b>																
Argentina	0.35	0.26	0.29	0.29	2.07	1.67	2.14	2.14	0.73	0.43	0.61	0.61	0.00	0.00	0.18	42.19
Brazil	0.50	0.50	0.51	0.51	2.27	2.38	2.39	2.39	1.14	1.19	1.22	1.22	0.00	0.00	0.03	2.52
Chile	0.12	0.07	0.10	0.10	4.70	4.38	4.74	4.74	0.58	0.32	0.45	0.45	0.00	0.00	0.14	42.86
Uruguay	0.01	0.02	0.01	0.01	2.21	2.40	2.20	2.20	0.03	0.04	0.02	0.02	0.00	0.00	-0.01	-38.89
<b>Oceania</b>																
Australia	0.84	0.75	0.70	0.70	2.06	2.13	1.57	1.57	1.74	1.59	1.10	1.10	0.00	0.00	-0.49	-30.69
New Zealand	0.00	0.01	0.01	0.00	6.25	6.60	5.67	6.50	0.03	0.03	0.03	0.03	-0.01	-23.53	-0.01	-21.21
<b>China</b>	0.41	0.41	0.41	0.41	1.48	1.48	1.48	1.48	0.60	0.60	0.60	0.60	0.00	0.00	0.00	0.00
<b>Africa</b>																
Algeria	0.08	0.08	0.08	0.08	1.31	1.31	1.31	1.31	0.11	0.11	0.11	0.11	0.00	0.00	0.00	0.00
Morocco	0.02	0.02	0.01	0.01	0.33	0.40	0.31	0.31	0.01	0.01	0.00	0.00	0.00	0.00	0.00	-33.33
South Africa	0.04	0.03	0.03	0.03	1.64	1.04	1.29	1.29	0.06	0.03	0.04	0.04	0.00	0.00	0.01	28.57
<b>Other Europe</b>																
United Kingdom	0.20	0.17	0.17	0.17	5.62	5.79	5.15	5.15	1.12	1.01	0.85	0.85	0.00	0.00	-0.16	-15.59
Norway	0.07	0.07	0.07	0.07	4.29	4.29	4.29	4.29	0.30	0.30	0.30	0.30	0.00	0.00	0.00	0.00
Serbia	0.02	0.02	0.02	0.02	3.11	2.80	3.00	3.00	0.06	0.04	0.06	0.06	0.00	0.00	0.02	42.86
Albania	0.02	0.02	0.02	0.02	2.20	2.20	2.27	2.27	0.03	0.03	0.03	0.03	0.00	0.00	0.00	3.03
Bosnia and Herzegovina	0.01	0.01	0.01	0.01	2.82	4.00	3.43	3.43	0.03	0.04	0.02	0.02	0.00	0.00	-0.02	-45.45
<b>Turkey</b>	0.11	0.11	0.11	0.11	2.38	2.38	2.38	2.38	0.25	0.25	0.25	0.25	0.00	0.00	0.00	0.00
<b>Mexico</b>	0.05	0.05	0.03	0.03	2.02	2.22	2.00	2.20	0.09	0.11	0.06	0.06	-0.01	-8.33	-0.06	-51.33
<b>Others</b>	0.06	0.03	0.06	0.06	1.66	1.63	1.68	1.68	0.10	0.05	0.09	0.09	0.00	0.00	0.04	80.77

World and Selected Countries and Regions

**Table 07 Rye Area, Yield, and Production**

Country / Region	Area (Million hectares)				Yield (Metric tons per hectare)				Production (Million metric tons)				Change in Production			
	Prel.		2023/24 Proj.		Prel.		2023/24 Proj.		Prel.		2023/24 Proj.		From last month		From last year	
	2021/22	2022/23	Dec	Jan	2021/22	2022/23	Dec	Jan	2021/22	2022/23	Dec	Jan	MMT	Percent	MMT	Percent
<b>World</b>	4.03	3.70	3.61	3.61	3.10	3.32	3.24	3.21	12.52	12.27	11.70	11.60	-0.10	-0.85	-0.68	-5.50
<b>United States</b>	0.12	0.14	0.13	0.13	2.09	2.26	2.03	2.03	0.25	0.32	0.26	0.26	0.00	0.00	-0.05	-16.46
<b>Total Foreign</b>	3.92	3.56	3.48	3.48	3.13	3.36	3.29	3.26	12.27	11.96	11.43	11.33	-0.10	-0.87	-0.62	-5.21
<b>European Union</b>	1.93	1.77	1.85	1.85	4.16	4.30	4.10	4.10	8.01	7.61	7.58	7.58	0.00	0.00	-0.03	-0.39
<b>Former Soviet Union - 12</b>																
Russia	0.99	0.88	0.80	0.80	1.73	2.27	2.25	2.13	1.72	2.00	1.80	1.70	-0.10	-5.56	-0.30	-15.00
Belarus	0.33	0.30	0.31	0.31	2.46	2.50	2.52	2.52	0.80	0.75	0.78	0.78	0.00	0.00	0.03	4.00
Ukraine	0.18	0.10	0.08	0.08	3.43	3.15	2.88	2.88	0.60	0.32	0.23	0.23	0.00	0.00	-0.09	-26.98
Kazakhstan	0.04	0.03	0.02	0.02	0.91	1.76	1.36	1.36	0.04	0.06	0.03	0.03	0.00	0.00	-0.03	-50.00
<b>Turkey</b>	0.12	0.11	0.11	0.11	2.87	2.91	2.91	2.91	0.33	0.32	0.32	0.32	0.00	0.00	0.00	0.00
<b>Canada</b>	0.12	0.15	0.12	0.12	3.21	3.42	3.09	3.09	0.37	0.52	0.36	0.36	0.00	0.00	-0.16	-31.15
<b>South America</b>																
Chile	0.00	0.00	0.00	0.00	5.00	5.00	0.00	0.00	0.01	0.01	0.00	0.00	0.00	100.00	-0.01	-100.00
Argentina	0.12	0.11	0.09	0.09	1.88	1.66	1.83	1.83	0.23	0.18	0.17	0.17	0.00	0.00	-0.01	-7.82
<b>Other Europe</b>																
Bosnia and Herzegovina	0.00	0.00	0.00	0.00	3.00	3.00	3.00	3.00	0.01	0.01	0.01	0.01	0.00	0.00	0.00	0.00
Switzerland	0.00	0.00	0.00	0.00	5.50	5.50	5.50	5.50	0.01	0.01	0.01	0.01	0.00	0.00	0.00	0.00
Serbia	0.01	0.01	0.01	0.01	3.80	3.00	3.33	3.33	0.02	0.02	0.02	0.02	0.00	0.00	0.00	11.11
<b>Australia</b>	0.05	0.05	0.05	0.05	0.71	0.71	0.71	0.71	0.03	0.03	0.03	0.03	0.00	0.00	0.00	0.00
<b>Others</b>	0.04	0.05	0.04	0.04	2.18	2.80	2.20	2.20	0.10	0.13	0.10	0.10	0.00	0.00	-0.03	-23.02

World and Selected Countries and Regions

**Table 08 Sorghum Area, Yield, and Production**

Country / Region	Area (Million hectares)				Yield (Metric tons per hectare)				Production (Million metric tons)				Change in Production			
	2021/22	Prel. 2022/23	2023/24 Proj.		2021/22	Prel. 2022/23	2023/24 Proj.		2021/22	Prel. 2022/23	2023/24 Proj.		From last month		From last year	
			Dec	Jan			Dec	Jan			Dec	Jan	MMT	Percent	MMT	Percent
<b>World</b>	40.64	39.69	41.75	41.72	1.50	1.39	1.44	1.44	60.92	55.35	59.92	60.01	0.09	0.15	4.66	8.42
<b>United States</b>	2.63	1.85	2.53	2.48	4.33	2.58	3.23	3.26	11.38	4.77	8.18	8.07	-0.10	-1.27	3.30	69.20
<b>Total Foreign</b>	38.02	37.84	39.21	39.24	1.30	1.34	1.32	1.32	49.54	50.58	51.75	51.94	0.20	0.38	1.36	2.69
<b>Africa</b>																
Nigeria	5.70	5.70	5.70	5.70	1.18	1.18	1.18	1.18	6.73	6.74	6.70	6.70	0.00	0.00	-0.04	-0.62
Ethiopia	1.65	1.52	1.66	1.66	2.70	2.56	2.65	2.65	4.45	3.88	4.40	4.40	0.00	0.00	0.52	13.49
Sudan	6.92	7.00	7.50	7.50	0.51	0.75	0.67	0.67	3.53	5.25	5.00	5.00	0.00	0.00	-0.25	-4.73
Burkina Faso	1.90	1.90	1.90	1.90	0.87	1.06	1.00	1.00	1.64	2.01	1.90	1.90	0.00	0.00	-0.11	-5.66
Mali	1.55	1.50	1.50	1.50	0.81	1.05	1.00	1.00	1.25	1.58	1.50	1.50	0.00	0.00	-0.08	-5.18
Niger	3.52	3.70	3.70	3.70	0.34	0.57	0.51	0.51	1.21	2.10	1.90	1.90	0.00	0.00	-0.20	-9.52
Cameroon	0.74	0.74	0.74	0.74	1.62	1.62	1.62	1.62	1.20	1.20	1.20	1.20	0.00	0.00	0.00	0.00
Tanzania	1.04	1.00	1.00	1.00	1.04	1.00	1.00	1.00	1.08	1.00	1.00	1.00	0.00	0.00	0.00	0.00
Egypt	0.16	0.15	0.15	0.15	4.90	5.00	5.00	5.00	0.77	0.75	0.75	0.75	0.00	0.00	0.00	0.00
Uganda	0.23	0.25	0.25	0.25	0.87	0.90	0.90	0.90	0.20	0.23	0.23	0.23	0.00	0.00	0.00	0.00
Ghana	0.31	0.31	0.31	0.31	1.05	1.49	1.13	1.13	0.32	0.46	0.35	0.35	0.00	0.00	-0.11	-24.41
Mozambique	0.25	0.25	0.25	0.25	0.64	0.61	0.64	0.64	0.16	0.15	0.16	0.16	0.00	0.00	0.01	4.58
South Africa	0.04	0.03	0.04	0.04	2.78	2.76	3.75	3.75	0.10	0.09	0.15	0.15	0.00	0.00	0.06	59.57
<b>Mexico</b>	1.40	1.40	1.42	1.42	3.47	3.50	3.38	3.38	4.84	4.89	4.80	4.80	0.00	0.00	-0.09	-1.88
<b>South America</b>																
Argentina	0.70	0.50	0.60	0.60	4.12	3.22	4.17	4.17	2.88	1.61	2.50	2.50	0.00	0.00	0.89	55.28
Brazil	0.95	1.07	1.23	1.23	3.20	2.72	2.93	2.93	3.04	2.92	3.60	3.60	0.00	0.00	0.68	23.29
<b>South Asia</b>																
India	3.80	3.54	4.10	4.10	1.09	1.08	1.07	1.07	4.15	3.81	4.40	4.40	0.00	0.00	0.59	15.36
Pakistan	0.08	0.22	0.22	0.22	0.83	0.63	0.63	0.63	0.06	0.14	0.14	0.14	0.00	0.00	0.00	0.00
<b>China</b>	0.63	0.63	0.63	0.63	4.76	4.76	4.76	4.76	3.00	3.00	3.00	3.00	0.00	0.00	0.00	0.00
<b>Australia</b>	0.62	0.69	0.60	0.60	4.26	3.84	3.00	3.00	2.65	2.64	1.80	1.80	0.00	0.00	-0.84	-31.77
<b>European Union</b>	0.15	0.13	0.13	0.16	5.44	4.29	5.19	5.16	0.80	0.55	0.69	0.80	0.11	15.94	0.25	44.67
<b>Others</b>	5.70	5.62	5.58	5.59	0.96	0.99	1.00	1.01	5.49	5.57	5.59	5.67	0.09	1.52	0.10	1.80

World and Selected Countries and Regions



**Table 09 Rice Area, Yield, and Production**  
**World and Selected Countries and Regions**

Country / Region	Area (Million hectares)				Yield (Metric tons per hectare)				Production (Million metric tons)				Change in Production			
	2021/22	Prel. 2022/23	2023/24 Proj.		2021/22	Prel. 2022/23	2023/24 Proj.		2021/22	Prel. 2022/23	2023/24 Proj.		From last month		From last year	
			Dec	Jan			Dec	Jan			Dec	Jan	MMT	Percent	MMT	Percent
<b>World</b>	165.66	165.70	165.90	165.00	4.62	4.62	4.66	4.65	513.10	512.96	518.07	513.54	-4.52	-0.87	0.58	0.11
<b>United States</b>	1.00	0.88	1.15	1.16	8.64	8.28	8.64	8.57	6.07	5.08	6.98	6.93	-0.04	-0.63	1.85	36.38
<b>Total Foreign</b>	164.65	164.82	164.74	163.84	4.60	4.60	4.63	4.62	507.03	507.88	511.09	506.61	-4.48	-0.88	-1.27	-0.25
<b>East Asia</b>																
China	29.92	29.45	29.85	28.95	7.11	7.08	7.13	7.14	148.99	145.95	149.00	144.62	-4.38	-2.94	-1.33	-0.91
Japan	1.52	1.50	1.47	1.47	6.90	6.86	6.82	6.82	7.64	7.48	7.30	7.30	0.00	0.00	-0.18	-2.41
Korea, South	0.73	0.73	0.71	0.71	7.12	6.87	7.00	7.00	3.88	3.76	3.70	3.70	0.00	0.00	-0.06	-1.65
Korea, North	0.56	0.54	0.54	0.54	3.74	3.87	4.18	4.18	1.36	1.36	1.47	1.47	0.00	0.00	0.11	8.09
<b>South Asia</b>																
India	46.28	47.83	47.00	47.00	4.20	4.26	4.21	4.21	129.47	135.76	132.00	132.00	0.00	0.00	-3.76	-2.77
Bangladesh	11.62	11.60	11.65	11.65	4.63	4.70	4.69	4.67	35.85	36.35	36.40	36.30	-0.10	-0.27	-0.05	-0.14
Pakistan	3.54	3.00	3.50	3.50	3.95	2.75	3.86	3.86	9.32	5.50	9.00	9.00	0.00	0.00	3.50	63.64
Nepal	1.48	1.45	1.45	1.45	3.47	3.79	3.66	3.66	3.42	3.65	3.53	3.53	0.00	0.00	-0.12	-3.39
Sri Lanka	1.13	1.15	1.10	1.10	3.56	3.63	4.09	4.09	2.73	2.84	3.06	3.06	0.00	0.00	0.22	7.90
<b>Southeast Asia</b>																
Indonesia	11.60	11.55	11.30	11.30	4.67	4.64	4.67	4.67	34.40	34.00	33.50	33.50	0.00	0.00	-0.50	-1.47
Vietnam	7.10	7.10	7.15	7.15	6.01	6.07	6.05	6.05	26.67	26.94	27.00	27.00	0.00	0.00	0.06	0.22
Thailand	10.70	11.07	10.65	10.65	2.81	2.86	2.85	2.85	19.88	20.91	20.00	20.00	0.00	0.00	-0.91	-4.35
Burma	7.00	6.80	6.86	6.86	2.77	2.71	2.72	2.72	12.40	11.80	11.95	11.95	0.00	0.00	0.15	1.27
Philippines	4.80	4.85	4.80	4.80	4.15	4.13	4.17	4.17	12.54	12.63	12.60	12.60	0.00	0.00	-0.03	-0.20
Cambodia	3.27	3.31	3.37	3.37	2.89	2.94	2.92	2.92	5.77	5.93	6.00	6.00	0.00	0.00	0.07	1.13
Laos	0.94	0.95	0.95	0.95	3.28	3.26	3.21	3.21	1.95	1.95	1.92	1.92	0.00	0.00	-0.03	-1.54
Malaysia	0.65	0.66	0.66	0.66	3.97	3.99	4.08	4.08	1.68	1.70	1.75	1.75	0.00	0.00	0.05	2.94
<b>South America</b>																
Brazil	1.62	1.47	1.55	1.55	6.67	7.01	7.10	7.10	7.34	7.00	7.48	7.48	0.00	0.00	0.48	6.80
Peru	0.42	0.42	0.43	0.43	8.37	8.55	8.52	8.52	2.43	2.48	2.50	2.50	0.00	0.00	0.02	0.64
<b>Africa</b>																
Egypt	0.50	0.60	0.63	0.63	8.41	8.70	8.70	8.70	2.90	3.60	3.78	3.78	0.00	0.00	0.18	5.00
Madagascar	1.60	1.60	1.60	1.60	2.74	2.75	2.75	2.75	2.81	2.82	2.82	2.82	0.00	0.00	0.00	0.00
Nigeria	3.65	3.50	3.50	3.50	2.29	2.43	2.37	2.37	5.26	5.36	5.23	5.23	0.00	0.00	-0.13	-2.35
<b>European Union</b>	0.40	0.33	0.34	0.34	6.64	6.32	6.56	6.56	1.73	1.34	1.43	1.43	0.00	0.00	0.09	6.89
<b>Iran</b>	0.56	0.57	0.57	0.57	5.14	5.32	5.30	5.30	1.90	2.00	2.00	2.00	0.00	0.00	-0.01	-0.25
<b>Others</b>	13.06	12.80	13.13	13.13	2.87	2.94	2.97	2.97	24.72	24.78	25.68	25.68	0.00	0.00	0.90	3.64

Yield is on a rough basis, before the milling process. Production is on a milled basis, after the milling process.

**Table 10 Total Oilseed Area, Yield, and Production**  
**World and Selected Countries and Regions**

Country / Region	Area (Million hectares)				Yield (Metric tons per hectare)				Production (Million metric tons)				Change in Production			
	2021/22	Prel. 2022/23	2023/24 Proj.		2021/22	Prel. 2022/23	2023/24 Proj.		2021/22	Prel. 2022/23	2023/24 Proj.		From last month		From last year	
			Dec	Jan			Dec	Jan			Dec	Jan	MMT	Percent	MMT	Percent
<b>World Total</b>	--	--	--	--	--	--	--	--	611.77	634.53	660.99	660.18	-0.82	-0.12	25.65	4.04
<b>Total Foreign</b>	--	--	--	--	--	--	--	--	480.45	508.78	539.54	537.80	-1.74	-0.32	29.02	5.70
<b>Oilseed, Copra</b>	--	--	--	--	--	--	--	--	6.07	6.03	6.05	6.05	0.00	0.00	0.02	0.36
<b>Oilseed, Palm Kernel</b>	--	--	--	--	--	--	--	--	19.14	19.87	20.51	20.51	0.00	0.00	0.64	3.20
<b>Major OilSeeds</b>	260.92	266.46	270.69	269.82	2.25	2.28	2.34	2.35	586.57	608.63	634.44	633.62	-0.82	-0.13	24.99	4.11
<b>United States</b>	41.05	39.91	38.85	38.28	3.20	3.15	3.13	3.20	131.32	125.75	121.45	122.37	0.92	0.76	-3.38	-2.69
<b>Foreign Oilseeds</b>	219.88	226.55	231.85	231.54	2.07	2.13	2.21	2.21	455.25	482.88	512.98	511.25	-1.74	-0.34	28.37	5.87
<b>South America</b>	68.65	70.71	73.96	73.90	2.87	2.99	3.22	3.20	196.74	211.78	238.39	236.52	-1.87	-0.78	24.74	11.68
Brazil	43.23	46.16	47.54	47.54	3.12	3.57	3.51	3.42	135.03	164.85	166.79	162.79	-4.00	-2.40	-2.06	-1.25
Argentina	18.77	17.76	19.53	19.48	2.66	1.78	2.79	2.88	49.85	31.57	54.41	56.14	1.73	3.18	24.58	77.85
Paraguay	3.51	3.72	3.69	3.69	1.23	2.67	2.76	2.84	4.31	9.93	10.20	10.50	0.30	2.94	0.57	5.75
Bolivia	1.68	1.66	1.63	1.63	2.18	2.31	2.13	2.19	3.67	3.82	3.48	3.58	0.10	2.88	-0.24	-6.29
Uruguay	1.32	1.28	1.42	1.42	2.68	1.00	2.21	2.21	3.53	1.28	3.15	3.15	0.00	0.00	1.87	146.75
<b>China</b>	24.02	25.93	26.32	26.34	2.58	2.63	2.56	2.58	62.07	68.08	67.33	67.87	0.54	0.80	-0.21	-0.31
<b>South Asia</b>	41.74	43.61	44.37	44.32	1.11	1.04	1.01	1.01	46.48	45.35	44.91	44.87	-0.04	-0.08	-0.48	-1.05
India	38.49	40.19	40.40	40.35	1.10	1.03	0.99	0.99	42.15	41.39	39.86	39.83	-0.04	-0.10	-1.57	-3.78
Pakistan	2.53	2.49	3.06	3.06	1.31	1.08	1.24	1.24	3.31	2.69	3.80	3.80	0.00	0.00	1.11	41.17
<b>European Union</b>	11.09	12.36	12.60	12.53	2.80	2.58	2.71	2.69	31.08	31.88	34.15	33.65	-0.51	-1.48	1.77	5.56
<b>United Kingdom</b>	0.31	0.36	0.39	0.39	3.20	3.74	3.14	3.14	0.98	1.36	1.23	1.23	0.00	0.00	-0.14	-9.99
<b>Former Soviet Union - 12</b>	27.79	27.65	28.74	28.59	1.90	1.88	1.99	2.01	52.66	51.88	57.25	57.35	0.10	0.17	5.48	10.55
Russia	14.23	14.74	15.00	14.85	1.62	1.80	1.86	1.89	23.11	26.55	27.90	28.00	0.10	0.36	1.45	5.46
Ukraine	9.58	8.75	9.50	9.50	2.54	2.26	2.53	2.53	24.32	19.80	24.00	24.00	0.00	0.00	4.20	21.21
Uzbekistan	1.05	1.07	1.05	1.05	1.13	1.26	1.13	1.13	1.19	1.35	1.19	1.19	0.00	0.00	-0.16	-11.82
<b>Canada</b>	11.06	10.75	11.16	11.16	1.86	2.36	2.32	2.32	20.55	25.32	25.87	25.87	0.00	0.00	0.55	2.18
<b>Africa</b>	25.07	24.25	24.29	24.29	0.98	1.05	1.06	1.06	24.67	25.38	25.79	25.79	0.00	0.00	0.41	1.63
Nigeria	4.97	4.87	4.87	4.87	1.11	1.15	1.15	1.15	5.50	5.61	5.60	5.60	0.00	0.00	-0.01	-0.25
South Africa	1.76	1.88	1.90	1.90	1.92	2.02	1.99	1.99	3.37	3.79	3.79	3.79	0.00	0.00	-0.01	-0.16
Tanzania	1.34	1.36	1.47	1.47	0.90	0.91	0.87	0.87	1.21	1.23	1.28	1.28	0.00	0.00	0.04	3.49
<b>Southeast Asia</b>	3.12	3.08	3.05	3.05	1.36	1.36	1.39	1.39	4.23	4.18	4.23	4.23	0.00	0.00	0.05	1.12
Burma	1.95	1.94	1.95	1.95	1.16	1.18	1.24	1.24	2.25	2.28	2.41	2.41	0.00	0.00	0.13	5.47
Indonesia	0.90	0.87	0.84	0.84	1.55	1.52	1.49	1.49	1.39	1.32	1.26	1.26	0.00	0.00	-0.07	-4.92
<b>Australia</b>	3.94	4.61	4.02	4.02	2.20	2.19	1.77	1.77	8.68	10.11	7.13	7.13	0.00	0.00	-2.99	-29.53
<b>Turkey</b>	1.34	1.47	1.26	1.27	2.61	2.71	2.41	2.43	3.49	3.98	3.04	3.09	0.05	1.48	-0.90	-22.51
<b>Others</b>	1.75	1.78	1.69	1.69	2.06	2.02	2.17	2.17	3.62	3.59	3.66	3.66	0.00	0.00	0.07	2.06

World Total and Total Foreign: (Major Oilseeds plus copra and palm kernel) Major Oilseeds: (soybeans, sunflowerseeds, peanuts(inshell), cottonseed and rapeseed)

**Table 11 Soybean Area, Yield, and Production**

Country / Region	Area (Million hectares)				Yield (Metric tons per hectare)				Production (Million metric tons)				Change in Production			
	2021/22	Prel. 2022/23	2023/24 Proj.		2021/22	Prel. 2022/23	2023/24 Proj.		2021/22	Prel. 2022/23	2023/24 Proj.		From last month		From last year	
			Dec	Jan			Dec	Jan			Dec	Jan	MMT	Percent	MMT	Percent
<b>World</b>	131.45	136.48	139.10	139.04	2.74	2.75	2.87	2.87	360.41	375.40	398.88	398.98	0.09	0.02	23.58	6.28
<b>United States</b>	34.92	34.87	33.50	33.33	3.48	3.33	3.35	3.40	121.50	116.22	112.39	113.34	0.96	0.85	-2.88	-2.48
<b>Total Foreign</b>	96.52	101.61	105.60	105.71	2.48	2.55	2.71	2.70	238.91	259.18	286.50	285.63	-0.87	-0.30	26.46	10.21
<b>South America</b>																
Brazil	41.60	44.30	45.60	45.60	3.14	3.61	3.53	3.44	130.50	160.00	161.00	157.00	-4.00	-2.48	-3.00	-1.88
Argentina	15.90	14.40	16.40	16.50	2.76	1.74	2.93	3.03	43.90	25.00	48.00	50.00	2.00	4.17	25.00	100.00
Paraguay	3.42	3.60	3.55	3.55	1.22	2.71	2.82	2.90	4.18	9.75	10.00	10.30	0.30	3.00	0.55	5.64
Bolivia	1.53	1.53	1.50	1.50	2.27	2.39	2.20	2.27	3.46	3.65	3.30	3.40	0.10	3.03	-0.25	-6.85
Uruguay	1.16	0.93	1.28	1.28	2.80	0.75	2.27	2.27	3.23	0.70	2.90	2.90	0.00	0.00	2.20	314.29
<b>East Asia</b>																
China	8.42	10.24	10.45	10.47	1.95	1.98	1.96	1.99	16.40	20.28	20.50	20.84	0.34	1.66	0.56	2.74
Korea, South	0.05	0.06	0.07	0.07	2.06	2.03	1.93	1.93	0.11	0.13	0.13	0.13	0.00	0.00	0.00	0.77
Korea, North	0.17	0.16	0.16	0.16	1.15	1.15	1.15	1.15	0.19	0.18	0.18	0.18	0.00	0.00	0.00	0.00
Japan	0.15	0.15	0.16	0.16	1.63	1.58	1.63	1.63	0.24	0.24	0.25	0.25	0.00	0.00	0.02	6.30
<b>India</b>	12.15	13.08	13.00	13.00	0.98	0.95	0.85	0.85	11.89	12.41	11.00	11.00	0.00	0.00	-1.41	-11.37
<b>Canada</b>	2.08	2.12	2.26	2.26	2.99	3.09	3.09	3.09	6.22	6.54	6.98	6.98	0.00	0.00	0.44	6.69
<b>Former Soviet Union - 12</b>																
Russia	2.99	3.36	3.50	3.50	1.59	1.79	1.83	1.94	4.76	6.00	6.40	6.80	0.40	6.25	0.80	13.41
Ukraine	1.44	1.82	2.00	2.00	2.64	2.25	2.60	2.60	3.80	4.10	5.20	5.20	0.00	0.00	1.10	26.83
<b>European Union</b>	1.01	1.13	1.10	1.09	2.82	2.26	2.80	2.81	2.83	2.55	3.07	3.06	-0.01	-0.16	0.51	20.05
<b>Southeast Asia</b>																
Indonesia	0.35	0.33	0.32	0.32	1.21	1.18	1.17	1.17	0.43	0.39	0.38	0.38	0.00	0.00	-0.02	-3.85
Vietnam	0.03	0.03	0.03	0.03	1.61	1.60	1.61	1.61	0.05	0.05	0.05	0.05	0.00	0.00	0.00	-6.25
Thailand	0.03	0.03	0.03	0.03	1.63	1.63	1.63	1.63	0.05	0.05	0.05	0.05	0.00	0.00	0.00	0.00
Burma	0.13	0.13	0.12	0.12	1.04	1.04	1.04	1.04	0.14	0.13	0.13	0.13	0.00	0.00	-0.01	-3.85
<b>Serbia</b>	0.24	0.24	0.24	0.24	2.28	1.70	2.77	2.77	0.54	0.40	0.65	0.65	0.00	0.00	0.25	62.91
<b>Mexico</b>	0.18	0.12	0.09	0.09	1.57	1.52	1.53	1.53	0.29	0.18	0.14	0.14	0.00	0.00	-0.04	-21.14
<b>Africa</b>																
South Africa	0.93	1.15	1.07	1.07	2.41	2.40	2.34	2.34	2.23	2.76	2.50	2.50	0.00	0.00	-0.26	-9.26
Nigeria	1.20	1.20	1.15	1.15	0.93	0.98	1.00	1.00	1.12	1.18	1.15	1.15	0.00	0.00	-0.03	-2.54
Zambia	0.30	0.38	0.38	0.38	1.35	1.27	1.27	1.27	0.41	0.48	0.48	0.48	0.00	0.00	0.00	0.00
Uganda	0.17	0.17	0.17	0.17	1.20	1.18	1.18	1.18	0.20	0.20	0.20	0.20	0.00	0.00	0.00	0.00
<b>Middle East</b>																
Iran	0.07	0.08	0.07	0.07	2.29	2.27	2.36	2.36	0.16	0.17	0.17	0.17	0.00	0.00	-0.01	-2.94
Turkey	0.03	0.04	0.03	0.03	3.91	4.14	4.12	4.12	0.13	0.15	0.14	0.14	0.00	0.00	-0.01	-3.45
<b>Others</b>	0.82	0.86	0.89	0.89	1.78	1.77	1.76	1.76	1.46	1.53	1.57	1.57	0.00	0.00	0.05	3.01

World and Selected Countries and Regions

**Table 12 Cottonseed Area, Yield, and Production**

Country / Region	Area (Million hectares)				Yield (Metric tons per hectare)				Production (Million metric tons)				Change in Production			
	2021/22	Prel. 2022/23	2023/24 Proj.		2021/22	Prel. 2022/23	2023/24 Proj.		2021/22	Prel. 2022/23	2023/24 Proj.		From last month		From last year	
			Dec	Jan			Dec	Jan			Dec	Jan	MMT	Percent	MMT	Percent
<b>World</b>	31.77	31.19	31.28	30.92	1.31	1.37	1.32	1.34	41.51	42.68	41.36	41.54	0.18	0.42	-1.14	-2.67
<b>United States</b>	4.15	2.95	3.25	2.86	1.16	1.36	1.09	1.20	4.83	4.01	3.53	3.44	-0.09	-2.64	-0.57	-14.21
<b>Total Foreign</b>	27.62	28.24	28.04	28.07	1.33	1.37	1.35	1.36	36.68	38.67	37.83	38.10	0.27	0.71	-0.57	-1.48
<b>South Asia</b>																
India	12.37	12.93	12.70	12.70	0.83	0.86	0.84	0.84	10.32	11.17	10.61	10.61	0.00	0.00	-0.55	-4.94
Pakistan	2.00	1.80	2.40	2.40	1.30	0.94	1.21	1.21	2.60	1.69	2.90	2.90	0.00	0.00	1.21	71.82
<b>China</b>	3.10	3.15	2.90	2.90	3.39	3.82	3.65	3.72	10.50	12.03	10.58	10.78	0.20	1.85	-1.25	-10.42
<b>Former Soviet Union - 12</b>																
Uzbekistan	1.03	1.05	1.03	1.03	1.09	1.23	1.10	1.10	1.12	1.29	1.14	1.14	0.00	0.00	-0.16	-12.14
Turkmenistan	0.55	0.55	0.55	0.55	0.64	0.64	0.64	0.64	0.35	0.35	0.35	0.35	0.00	0.00	0.00	0.00
Tajikistan	0.17	0.17	0.17	0.17	1.09	1.11	1.15	1.15	0.19	0.19	0.20	0.20	0.00	0.00	0.01	3.72
Kazakhstan	0.11	0.13	0.12	0.12	0.84	1.05	0.88	0.88	0.09	0.13	0.11	0.11	0.00	0.00	-0.03	-19.85
<b>South America</b>																
Brazil	1.37	1.60	1.66	1.66	2.62	2.43	2.91	2.91	3.59	3.89	4.83	4.83	0.00	0.00	0.94	24.24
Argentina	0.48	0.51	0.53	0.56	1.06	1.06	1.05	1.12	0.51	0.55	0.56	0.63	0.07	13.33	0.08	15.41
<b>Middle East</b>																
Turkey	0.45	0.56	0.44	0.44	2.76	2.88	2.38	2.38	1.24	1.60	1.05	1.05	0.00	0.00	-0.56	-34.69
Syria	0.03	0.03	0.03	0.03	2.20	2.20	2.20	2.20	0.06	0.06	0.06	0.06	0.00	0.00	0.00	0.00
Iran	0.10	0.10	0.10	0.10	1.35	1.35	1.18	1.18	0.14	0.14	0.12	0.12	0.00	0.00	-0.02	-12.59
<b>Australia</b>	0.64	0.65	0.47	0.47	2.77	2.68	3.29	3.29	1.76	1.74	1.53	1.53	0.00	0.00	-0.21	-12.06
<b>European Union</b>	0.32	0.31	0.25	0.25	1.66	1.70	1.34	1.34	0.53	0.53	0.34	0.34	0.00	0.00	-0.19	-35.62
<b>Africa</b>																
Burkina Faso	0.60	0.62	0.49	0.49	0.45	0.35	0.39	0.39	0.27	0.21	0.19	0.19	0.00	0.00	-0.02	-9.81
Mali	0.72	0.60	0.70	0.70	0.56	0.35	0.50	0.50	0.40	0.21	0.35	0.35	0.00	0.00	0.15	69.71
Cameroon	0.23	0.23	0.25	0.25	1.39	1.29	1.33	1.33	0.32	0.30	0.33	0.33	0.00	0.00	0.03	8.33
Cote d'Ivoire	0.47	0.41	0.39	0.39	0.60	0.29	0.52	0.52	0.28	0.12	0.20	0.20	0.00	0.00	0.08	70.59
Benin	0.64	0.57	0.53	0.53	0.73	0.64	0.73	0.73	0.47	0.36	0.39	0.39	0.00	0.00	0.02	6.59
Tanzania	0.34	0.36	0.47	0.47	0.33	0.37	0.38	0.38	0.11	0.13	0.18	0.18	0.00	0.00	0.04	32.58
Egypt	0.09	0.14	0.11	0.11	1.00	0.92	0.96	0.96	0.09	0.13	0.11	0.11	0.00	0.00	-0.02	-17.83
Nigeria	0.27	0.27	0.27	0.27	0.56	0.56	0.56	0.56	0.15	0.15	0.15	0.15	0.00	0.00	0.00	0.00
Uganda	0.10	0.10	0.10	0.10	1.49	1.49	1.49	1.49	0.15	0.15	0.15	0.15	0.00	0.00	0.00	0.00
Zimbabwe	0.25	0.24	0.24	0.24	0.33	0.34	0.34	0.34	0.08	0.08	0.08	0.08	0.00	0.00	0.00	0.00
Sudan	0.20	0.20	0.20	0.20	1.53	1.53	1.53	1.53	0.31	0.31	0.31	0.31	0.00	0.00	0.00	0.00
<b>Mexico</b>	0.15	0.20	0.13	0.13	2.71	2.70	2.43	2.43	0.42	0.54	0.32	0.32	0.00	0.00	-0.22	-41.48
<b>Burma</b>	0.16	0.15	0.16	0.16	0.81	0.76	1.25	1.25	0.13	0.11	0.19	0.19	0.00	0.00	0.08	70.18
<b>Others</b>	0.70	0.63	0.67	0.67	0.74	0.83	0.80	0.79	0.52	0.52	0.53	0.53	0.00	-0.38	0.01	1.34

World and Selected Countries and Regions

**Table 13 Peanut Area, Yield, and Production**

Country / Region	Area (Million hectares)				Yield (Metric tons per hectare)				Production (Million metric tons)				Change in Production			
	Prel.		2023/24 Proj.		Prel.		2023/24 Proj.		Prel.		2023/24 Proj.		From last month		From last year	
	2021/22	2022/23	Dec	Jan	2021/22	2022/23	Dec	Jan	2021/22	2022/23	Dec	Jan	MMT	Percent	MMT	Percent
World	30.70	28.89	29.49	29.50	1.69	1.71	1.71	1.71	51.97	49.38	50.41	50.46	0.05	0.10	1.08	2.18
United States	0.62	0.56	0.65	0.64	4.64	4.50	4.19	4.19	2.89	2.51	2.71	2.67	-0.04	-1.55	0.16	6.28
Total Foreign	30.08	28.33	28.84	28.87	1.63	1.65	1.65	1.66	49.08	46.87	47.70	47.79	0.09	0.19	0.92	1.96
China	4.81	4.68	4.82	4.82	3.81	3.91	3.86	3.86	18.31	18.33	18.60	18.60	0.00	0.00	0.27	1.47
Africa																
Nigeria	3.50	3.40	3.45	3.45	1.21	1.26	1.25	1.25	4.23	4.28	4.30	4.30	0.00	0.00	0.02	0.37
Sudan	3.94	3.00	3.00	3.00	0.60	0.83	0.83	0.83	2.36	2.50	2.50	2.50	0.00	0.00	0.00	0.00
Senegal	1.21	1.23	1.23	1.23	1.38	1.23	1.40	1.40	1.68	1.50	1.72	1.72	0.00	0.00	0.21	14.18
Cameroon	0.43	0.43	0.43	0.43	1.40	1.40	1.40	1.40	0.60	0.60	0.60	0.60	0.00	0.00	0.00	0.00
Ghana	0.34	0.37	0.37	0.37	1.48	1.65	1.62	1.62	0.50	0.61	0.60	0.60	0.00	0.00	-0.01	-1.80
Chad	0.75	0.76	0.76	0.76	1.06	1.10	1.09	1.09	0.80	0.83	0.83	0.83	0.00	0.00	0.00	0.12
Malawi	0.40	0.40	0.40	0.40	0.88	0.88	0.88	0.88	0.35	0.35	0.35	0.35	0.00	0.00	0.00	0.00
Congo (Kinshasa)	0.52	0.53	0.53	0.53	0.92	0.91	0.91	0.91	0.48	0.48	0.48	0.48	0.00	0.00	0.00	0.00
Niger	0.92	0.97	0.92	0.92	0.56	0.69	0.65	0.65	0.52	0.67	0.60	0.60	0.00	0.00	-0.07	-10.58
Mali	0.44	0.43	0.43	0.43	0.78	1.04	1.00	1.00	0.35	0.44	0.43	0.43	0.00	0.00	-0.02	-4.06
Uganda	0.39	0.35	0.35	0.35	0.65	0.57	0.57	0.57	0.25	0.20	0.20	0.20	0.00	0.00	0.00	0.00
Burkina Faso	0.58	0.63	0.64	0.64	0.83	0.89	0.90	0.90	0.48	0.56	0.58	0.58	0.00	0.00	0.02	2.86
Guinea	0.79	0.90	0.90	0.90	1.15	1.14	1.11	1.11	0.91	1.03	1.00	1.00	0.00	0.00	-0.03	-2.44
Egypt	0.06	0.06	0.06	0.06	3.42	3.20	3.20	3.20	0.21	0.21	0.21	0.21	0.00	0.00	0.00	0.00
Central African Republic	0.13	0.13	0.13	0.13	1.15	1.15	1.15	1.15	0.15	0.15	0.15	0.15	0.00	0.00	0.00	0.00
South Africa	0.04	0.03	0.04	0.04	1.51	2.26	2.00	2.00	0.07	0.07	0.08	0.08	0.00	0.00	0.01	14.29
Mozambique	0.38	0.38	0.38	0.38	0.34	0.34	0.34	0.34	0.13	0.13	0.13	0.13	0.00	0.00	0.00	0.00
Cote d'Ivoire	0.17	0.17	0.17	0.17	1.42	1.47	1.45	1.45	0.23	0.24	0.24	0.24	0.00	0.00	0.00	-1.23
Benin	0.17	0.17	0.18	0.18	1.05	0.96	0.97	0.97	0.18	0.16	0.18	0.18	0.00	0.00	0.01	6.71
South Asia																
India	5.71	4.96	5.30	5.30	1.52	1.27	1.21	1.21	8.70	6.30	6.40	6.40	0.00	0.00	0.10	1.59
Pakistan	0.15	0.13	0.13	0.13	0.94	0.88	0.88	0.88	0.15	0.12	0.12	0.12	0.00	0.00	0.00	0.00
Southeast Asia																
Indonesia	0.55	0.54	0.52	0.52	1.76	1.72	1.69	1.69	0.96	0.93	0.88	0.88	0.00	0.00	-0.05	-5.38
Burma	1.06	1.07	1.07	1.07	1.51	1.55	1.59	1.59	1.60	1.65	1.70	1.70	0.00	0.00	0.05	3.03
Vietnam	0.16	0.16	0.15	0.15	2.58	2.58	2.60	2.60	0.41	0.40	0.39	0.39	0.00	0.00	-0.01	-2.50
Thailand	0.02	0.02	0.02	0.02	1.67	1.67	1.67	1.67	0.04	0.04	0.04	0.04	0.00	0.00	0.00	0.00
South America																
Argentina	0.41	0.37	0.38	0.40	3.29	2.59	3.47	3.48	1.34	0.96	1.32	1.38	0.06	4.17	0.41	42.78
Brazil	0.22	0.22	0.24	0.24	4.09	4.05	3.79	3.79	0.90	0.89	0.89	0.89	0.00	0.00	0.00	0.00
Mexico	0.06	0.05	0.05	0.05	1.63	1.87	1.74	1.74	0.10	0.10	0.09	0.09	0.00	0.00	-0.01	-8.91
Others	1.78	1.81	1.80	1.81	1.20	1.18	1.17	1.19	2.13	2.13	2.12	2.15	0.04	1.65	0.02	0.75

**Table 14 Sunflowerseed Area, Yield, and Production**

Country / Region	Area (Million hectares)				Yield (Metric tons per hectare)				Production (Million metric tons)				Change in Production			
	2021/22	Prel. 2022/23	2023/24 Proj. Dec	2023/24 Proj. Jan	2021/22	Prel. 2022/23	2023/24 Proj. Dec	2023/24 Proj. Jan	2021/22	Prel. 2022/23	2023/24 Proj. Dec	2023/24 Proj. Jan	From last month MMT	Percent	From last year MMT	Percent
<b>World</b>	28.55	28.02	28.38	27.87	1.99	1.87	2.00	1.99	56.86	52.39	56.80	55.54	-1.26	-2.21	3.16	6.02
<b>United States</b>	0.50	0.65	0.51	0.51	1.71	1.97	1.95	2.00	0.86	1.27	1.00	1.03	0.03	3.22	-0.25	-19.39
<b>Total Foreign</b>	28.04	27.37	27.87	27.36	2.00	1.87	2.00	1.99	55.99	51.11	55.81	54.52	-1.29	-2.31	3.40	6.66
<b>Former Soviet Union - 12</b>																
Russia	9.61	9.11	9.50	9.30	1.62	1.78	1.84	1.84	15.57	16.25	17.50	17.10	-0.40	-2.29	0.85	5.20
Ukraine	7.10	5.70	6.00	6.00	2.46	2.14	2.42	2.42	17.50	12.20	14.50	14.50	0.00	0.00	2.30	18.85
Kazakhstan	0.94	1.09	1.15	1.15	1.10	1.20	1.04	1.04	1.03	1.30	1.20	1.20	0.00	0.00	-0.10	-7.98
<b>European Union</b>	4.37	4.98	4.96	4.90	2.36	1.84	2.15	2.08	10.33	9.18	10.65	10.20	-0.45	-4.23	1.02	11.10
<b>South America</b>																
Argentina	1.96	2.45	2.20	2.00	2.07	2.05	2.05	2.05	4.05	5.02	4.50	4.10	-0.40	-8.89	-0.92	-18.31
Uruguay	0.01	0.01	0.01	0.01	2.00	0.91	0.92	0.92	0.01	0.01	0.01	0.01	0.00	0.00	0.00	10.00
Bolivia	0.16	0.13	0.13	0.13	1.32	1.27	1.35	1.35	0.21	0.17	0.18	0.18	0.00	0.00	0.01	6.06
Brazil	0.04	0.04	0.04	0.04	1.03	1.56	1.55	1.55	0.04	0.06	0.07	0.07	0.00	0.00	0.00	1.56
Paraguay	0.03	0.03	0.03	0.03	1.55	1.56	1.50	1.50	0.05	0.05	0.05	0.05	0.00	0.00	-0.01	-10.00
<b>China</b>	0.70	0.60	0.80	0.80	3.06	3.17	2.81	2.81	2.15	1.90	2.25	2.25	0.00	0.00	0.35	18.42
<b>South Asia</b>																
India	0.27	0.36	0.20	0.15	0.52	0.59	0.75	0.75	0.14	0.22	0.15	0.11	-0.04	-25.33	-0.10	-47.91
Pakistan	0.05	0.11	0.10	0.10	1.58	1.35	1.35	1.35	0.08	0.15	0.14	0.14	0.00	0.00	-0.01	-8.78
<b>Middle East</b>																
Turkey	0.76	0.79	0.70	0.70	2.30	2.41	2.21	2.21	1.75	1.90	1.55	1.55	0.00	0.00	-0.35	-18.42
Iran	0.04	0.04	0.04	0.04	1.00	1.02	1.05	1.05	0.04	0.04	0.04	0.04	0.00	0.00	0.00	-2.27
Israel	0.00	0.00	0.00	0.00	2.00	2.00	4.00	4.00	0.00	0.00	0.00	0.00	0.00	0.00	0.00	100.00
<b>Africa</b>																
Egypt	0.01	0.02	0.02	0.02	2.38	2.53	2.50	2.50	0.02	0.04	0.05	0.05	0.00	0.00	0.01	31.58
Morocco	0.02	0.02	0.02	0.02	1.25	1.11	1.27	1.27	0.03	0.02	0.03	0.03	0.00	0.00	0.01	40.00
South Africa	0.67	0.56	0.64	0.64	1.26	1.30	1.46	1.46	0.85	0.72	0.94	0.94	0.00	0.00	0.21	29.14
<b>Burma</b>	0.60	0.60	0.60	0.60	0.65	0.65	0.65	0.65	0.39	0.39	0.39	0.39	0.00	0.00	0.00	0.00
<b>Canada</b>	0.04	0.04	0.04	0.04	2.03	2.21	2.30	2.30	0.08	0.08	0.09	0.09	0.00	0.00	0.01	9.52
<b>Australia</b>	0.02	0.03	0.03	0.03	1.58	1.48	1.48	1.48	0.03	0.04	0.04	0.04	0.00	0.00	0.00	0.00
<b>Others</b>	0.63	0.66	0.66	0.66	2.59	2.07	2.28	2.28	1.64	1.37	1.50	1.50	0.00	0.00	0.13	9.52

World and Selected Countries and Regions



**Table 15 Rapeseed Area, Yield, and Production**

Country / Region	Area (Million hectares)				Yield (Metric tons per hectare)				Production (Million metric tons)				Change in Production			
	Prel.		2023/24 Proj.		Prel.		2023/24 Proj.		Prel.		2023/24 Proj.		From last month		From last year	
	2021/22	2022/23	Dec	Jan	2021/22	2022/23	Dec	Jan	2021/22	2022/23	Dec	Jan	MMT	Percent	MMT	Percent
<b>World</b>	38.46	41.88	42.44	42.49	1.97	2.12	2.05	2.05	75.83	88.79	86.98	87.10	0.12	0.14	-1.68	-1.90
<b>United States</b>	0.85	0.88	0.94	0.94	1.46	1.98	1.95	2.01	1.24	1.74	1.83	1.90	0.06	3.50	0.16	8.97
<b>Total Foreign</b>	37.62	41.00	41.50	41.54	1.98	2.12	2.05	2.05	74.59	87.05	85.15	85.21	0.06	0.07	-1.84	-2.11
<b>European Union</b>	5.39	5.94	6.30	6.29	3.22	3.31	3.19	3.19	17.39	19.62	20.10	20.05	-0.05	-0.25	0.43	2.19
<b>United Kingdom</b>	0.31	0.36	0.39	0.39	3.20	3.74	3.14	3.14	0.98	1.36	1.23	1.23	0.00	0.00	-0.14	-9.99
<b>Switzerland</b>	0.02	0.02	0.02	0.02	3.14	3.14	3.14	3.14	0.07	0.07	0.07	0.07	0.00	0.00	0.00	0.00
<b>Canada</b>	8.95	8.60	8.86	8.86	1.59	2.17	2.12	2.12	14.25	18.70	18.80	18.80	0.00	0.00	0.11	0.56
<b>China</b>	6.99	7.25	7.35	7.35	2.10	2.14	2.10	2.10	14.71	15.53	15.40	15.40	0.00	0.00	-0.13	-0.84
<b>South Asia</b>																
India	7.99	8.85	9.20	9.20	1.39	1.28	1.27	1.27	11.10	11.30	11.70	11.70	0.00	0.00	0.40	3.54
Pakistan	0.32	0.45	0.43	0.43	1.50	1.64	1.53	1.53	0.48	0.74	0.65	0.65	0.00	0.00	-0.09	-12.16
Bangladesh	0.61	0.81	0.80	0.80	1.35	1.30	1.29	1.29	0.82	1.05	1.03	1.03	0.00	0.00	-0.02	-1.90
<b>Former Soviet Union - 12</b>																
Russia	1.62	2.27	2.00	2.05	1.71	1.89	2.00	2.00	2.78	4.30	4.00	4.10	0.10	2.50	-0.20	-4.65
Ukraine	1.04	1.23	1.50	1.50	2.91	2.85	2.87	2.87	3.02	3.50	4.30	4.30	0.00	0.00	0.80	22.86
Belarus	0.39	0.36	0.40	0.40	1.83	2.22	2.25	2.25	0.72	0.80	0.90	0.90	0.00	0.00	0.10	12.50
Kazakhstan	0.12	0.13	0.13	0.13	1.24	1.48	1.15	1.15	0.15	0.19	0.15	0.15	0.00	0.00	-0.04	-20.63
<b>Australia</b>	3.25	3.90	3.50	3.50	2.10	2.12	1.57	1.57	6.82	8.27	5.50	5.50	0.00	0.00	-2.77	-33.52
<b>South America</b>																
Chile	0.04	0.03	0.04	0.04	3.86	3.79	3.82	3.82	0.14	0.13	0.15	0.15	0.00	0.00	0.02	16.00
Paraguay	0.05	0.05	0.04	0.04	1.36	1.51	1.50	1.50	0.06	0.07	0.06	0.06	0.00	0.00	-0.01	-7.35
<b>Ethiopia</b>	0.03	0.03	0.03	0.03	1.80	1.80	1.80	1.80	0.05	0.05	0.05	0.05	0.00	0.00	0.00	0.00
<b>Others</b>	0.52	0.73	0.53	0.53	2.09	1.91	2.01	2.03	1.08	1.38	1.07	1.08	0.01	0.93	-0.30	-21.78

World and Selected Countries and Regions

**Table 16 Copra, Palm Kernel, and Palm Oil Production**

Country / Region	Production (Million metric tons)				Change in Production			
	2021/22	Prel.	2023/24 Proj.		From last month		From last year	
		2022/23	Dec	Jan	MMT	Percent	MMT	Percent
<b>Oilseed, Copra</b>								
Philippines	2.60	2.60	2.70	2.70	0.00	0.00	0.10	3.85
Indonesia	1.68	1.68	1.69	1.69	0.00	0.00	0.01	0.60
India	0.94	0.94	0.94	0.94	0.00	0.00	0.00	0.00
Vietnam	0.29	0.29	0.29	0.29	0.00	0.00	0.00	0.00
Papua New Guinea	0.11	0.11	0.11	0.11	0.00	0.00	0.00	0.00
Thailand	0.09	0.09	0.09	0.09	0.00	0.00	0.00	0.00
Sri Lanka	0.11	0.07	0.07	0.07	0.00	0.00	0.00	0.00
Mexico	0.05	0.05	0.05	0.05	0.00	0.00	0.00	0.00
Solomon Islands	0.03	0.03			0.00	0.00	-0.03	0.00
Cote d'Ivoire	0.03	0.03	0.03	0.03	0.00	0.00	0.00	0.00
World	6.07	6.03	6.05	6.05	0.00	0.00	0.02	0.33
<b>Oilseed, Palm Kernel</b>								
Indonesia	11.20	11.80	12.00	12.00	0.00	0.00	0.20	1.69
Malaysia	4.45	4.49	4.70	4.70	0.00	0.00	0.21	4.68
Nigeria	0.90	0.90	1.10	1.10	0.00	0.00	0.20	22.22
Thailand	0.83	0.86	0.86	0.86	0.00	0.00	0.00	0.00
Colombia	0.32	0.33	0.35	0.35	0.00	0.00	0.02	6.06
Guatemala	0.18	0.18	0.18	0.18	0.00	0.00	0.00	0.00
Papua New Guinea	0.17	0.17	0.18	0.18	0.00	0.00	0.01	5.88
Honduras	0.16	0.16	0.16	0.16	0.00	0.00	0.00	0.00
Brazil	0.15	0.15	0.16	0.16	0.00	0.00	0.01	6.67
Cameroon	0.15	0.15	0.15	0.15	0.00	0.00	0.00	0.00
World	19.14	19.87	20.51	20.51	0.00	0.00	0.64	3.22
<b>Oil, Palm</b>								
Indonesia	42.00	46.00	47.00	47.00	0.00	0.00	1.00	2.17
Malaysia	18.15	18.39	19.00	19.00	0.00	0.00	0.61	3.32
Thailand	3.38	3.42	3.45	3.45	0.00	0.00	0.03	0.88
Colombia	1.76	1.80	1.90	1.90	0.00	0.00	0.10	5.56
Nigeria	1.40	1.40	1.50	1.50	0.00	0.00	0.10	7.14
Guatemala	0.88	0.91	0.92	0.92	0.00	0.00	0.01	1.10
Papua New Guinea	0.72	0.78	0.80	0.80	0.00	0.00	0.02	2.56
Cote d'Ivoire	0.58	0.60	0.60	0.60	0.00	0.00	0.00	0.00
Honduras	0.60	0.60	0.60	0.60	0.00	0.00	0.00	0.00
Brazil	0.55	0.57	0.59	0.59	0.00	0.00	0.01	1.75
World	72.96	77.56	79.46	79.46	0.00	0.00	1.90	2.45

World and Selected Countries and Regions

**Table 17 Cotton Area, Yield, and Production**

Country / Region	Area (Million hectares)				Yield (Kilograms per hectare)				Production (Million 480 lb. bales)				Change in Production			
	2021/22	Prel. 2022/23	2023/24 Proj.		2021/22	Prel. 2022/23	2023/24 Proj.		2021/22	Prel. 2022/23	2023/24 Proj.		From last month		From last year	
			Dec	Jan			Dec	Jan			Dec	Jan	MBales	Percent	MBales	Percent
<b>World</b>	32.28	31.71	32.01	31.63	772	800	768	779	114.46	116.56	112.92	113.18	0.26	0.23	-3.38	-2.90
<b>United States</b>	4.15	2.95	3.25	2.86	919	1,068	857	947	17.52	14.47	12.78	12.43	-0.34	-2.68	-2.03	-14.06
<b>Total Foreign</b>	28.13	28.76	28.76	28.77	750	773	758	762	96.94	102.09	100.14	100.75	0.61	0.60	-1.35	-1.32
<b>South Asia</b>																
India	12.37	12.93	12.70	12.70	428	443	429	429	24.30	26.30	25.00	25.00	0.00	0.00	-1.30	-4.94
Pakistan	2.00	1.80	2.40	2.40	653	472	608	608	6.00	3.90	6.70	6.70	0.00	0.00	2.80	71.79
<b>China</b>	3.10	3.15	2.90	2.90	1,882	2,122	2,027	2,065	26.80	30.70	27.00	27.50	0.50	1.85	-3.20	-10.42
<b>South America</b>																
Brazil	1.37	1.60	1.66	1.66	1,720	1,595	1,910	1,910	10.82	11.72	14.56	14.56	0.00	0.00	2.84	24.23
Argentina	0.48	0.51	0.53	0.56	624	627	616	661	1.38	1.48	1.50	1.70	0.20	13.33	0.23	15.25
Paraguay	0.02	0.05	0.07	0.07	527	890	855	855	0.05	0.18	0.28	0.28	0.00	0.00	0.09	49.46
<b>Africa</b>																
Burkina Faso	0.60	0.62	0.49	0.49	351	273	311	311	0.96	0.78	0.70	0.70	0.00	0.00	-0.08	-9.68
Mali	0.72	0.60	0.70	0.70	432	269	389	389	1.43	0.74	1.25	1.25	0.00	0.00	0.52	70.07
Cote d'Ivoire	0.47	0.41	0.39	0.39	486	236	424	424	1.05	0.45	0.76	0.76	0.00	0.00	0.32	70.79
Benin	0.64	0.57	0.53	0.53	483	418	483	483	1.42	1.10	1.18	1.18	0.00	0.00	0.08	6.82
Egypt	0.09	0.14	0.11	0.11	717	661	693	693	0.28	0.43	0.35	0.35	0.00	0.00	-0.08	-17.65
Cameroon	0.23	0.23	0.25	0.25	606	563	578	578	0.64	0.60	0.65	0.65	0.00	0.00	0.05	8.33
Tanzania	0.34	0.36	0.47	0.47	164	184	220	220	0.26	0.31	0.47	0.47	0.00	0.00	0.17	54.10
Nigeria	0.27	0.27	0.27	0.27	282	282	282	282	0.35	0.35	0.35	0.35	0.00	0.00	0.00	0.00
Zimbabwe	0.25	0.24	0.24	0.24	191	195	195	195	0.22	0.22	0.22	0.22	0.00	0.00	0.00	0.00
Ethiopia	0.05	0.05	0.06	0.06	687	726	713	713	0.16	0.18	0.18	0.18	0.00	0.00	0.00	0.00
<b>Former Soviet Union - 12</b>																
Uzbekistan	1.03	1.05	1.03	1.03	606	684	613	613	2.87	3.30	2.90	2.90	0.00	0.00	-0.40	-12.12
Turkmenistan	0.55	0.55	0.55	0.55	356	356	356	356	0.90	0.90	0.90	0.90	0.00	0.00	0.00	0.00
Tajikistan	0.17	0.17	0.17	0.17	608	615	640	640	0.48	0.48	0.50	0.50	0.00	0.00	0.02	4.17
Kazakhstan	0.11	0.13	0.12	0.12	467	584	490	490	0.24	0.34	0.27	0.27	0.00	0.00	-0.07	-19.40
<b>Middle East</b>																
Turkey	0.45	0.56	0.44	0.44	1,839	1,922	1,583	1,583	3.80	4.90	3.20	3.20	0.00	0.00	-1.70	-34.69
Syria	0.03	0.03	0.03	0.03	1,132	1,132	1,132	1,132	0.13	0.13	0.13	0.13	0.00	0.00	0.00	0.00
Iran	0.10	0.10	0.10	0.10	871	871	762	762	0.40	0.40	0.35	0.35	0.00	0.00	-0.05	-12.50
<b>Australia</b>	0.64	0.65	0.47	0.47	2,006	1,943	2,388	2,388	5.85	5.80	5.10	5.10	0.00	0.00	-0.70	-12.07
<b>Mexico</b>	0.15	0.20	0.13	0.13	1,725	1,720	1,549	1,549	1.22	1.58	0.93	0.93	0.00	0.00	-0.66	-41.46
<b>Burma</b>	0.16	0.15	0.16	0.16	660	653	660	660	0.48	0.45	0.47	0.47	0.00	0.00	0.02	4.44
<b>Others</b>	1.76	1.66	1.82	1.80	555	579	510	503	4.48	4.41	4.26	4.17	-0.10	-2.23	-0.24	-5.53

World and Selected Countries and Regions

# TABLE 18

The table below presents a record of the January projection and the final Estimate. Using world wheat production as an example, the "root mean square error" means that chances are 2 out of 3 that the current forecast will not be above or below the final estimate by more than 0.7 percent. Chances are 9 out of 10 (90% confidence level) that the difference will not exceed 1.1 percent. The average difference between the January projection and the final estimate is 3.1 million tons, ranging from 0.0 million to 8.3 million tons. The January projection has been below the estimate 32 times and above 9 times.

## RELIABILITY OF PRODUCTION PROJECTIONS 1/

Commodity and Region	Root mean square error	90 percent confidence interval	Difference between forecast and final estimate				
			Average	Smallest	Largest	Years	
						Below final	Above final
	Percent		---Million metric tons---				
WHEAT							
World	0.7	1.1	3.1	0.0	8.3	32	9
U.S.	0.2	0.3	0.1	0.0	0.3	18	11
Foreign	0.8	1.3	3.1	0.1	8.3	31	10
COARSE GRAINS 2/							
World	1.3	2.2	11.1	0.0	37.7	30	11
U.S.	0.4	0.7	0.4	0.0	4.6	17	11
Foreign	1.8	3.1	11.0	0.0	37.6	29	12
RICE (Milled)							
World	1.6	2.7	4.9	0.0	13.9	34	6
U.S.	1.6	2.6	0.1	0.0	0.3	13	7
Foreign	1.6	2.8	4.9	0.1	13.9	35	6
SOYBEANS							
World	3.4	5.8	5.5	0.0	22.4	22	19
U.S.	1.4	2.3	0.7	0.0	2.5	18	18
Foreign	5.7	9.7	5.6	0.2	22.6	22	19
COTTON			---Million 480-lb. bales---				
World	2.6	4.3	2.0	0.0	5.4	26	14
U.S.	1.1	1.8	0.1	0.0	0.3	14	26
Foreign	3.1	5.2	2.0	0.0	5.7	28	12
UNITED STATES			-----Million bushels-----				
CORN	0.4	0.7	14	0	148	4	6
SORGHUM	1.0	1.7	2	0	53	1	3
BARLEY	1.0	1.6	1	0	11	20	4
OATS	0.4	0.7	0	0	2	5	4

1/ Marketing years 1981/82 through 2022/23 for grains, soybeans, and cotton. Final for grains, soybeans, and cotton is defined as the first November estimate following the marketing year for 1981/82 through 2021/22, and for 2022/23 the last month's estimate.

2/ Includes corn, sorghum, barley, oats, rye, millet, and mixed grain

January 2024

Global Market Analysis, FAS, USDA