



United States
Department of
Agriculture

Foreign
Agricultural
Service

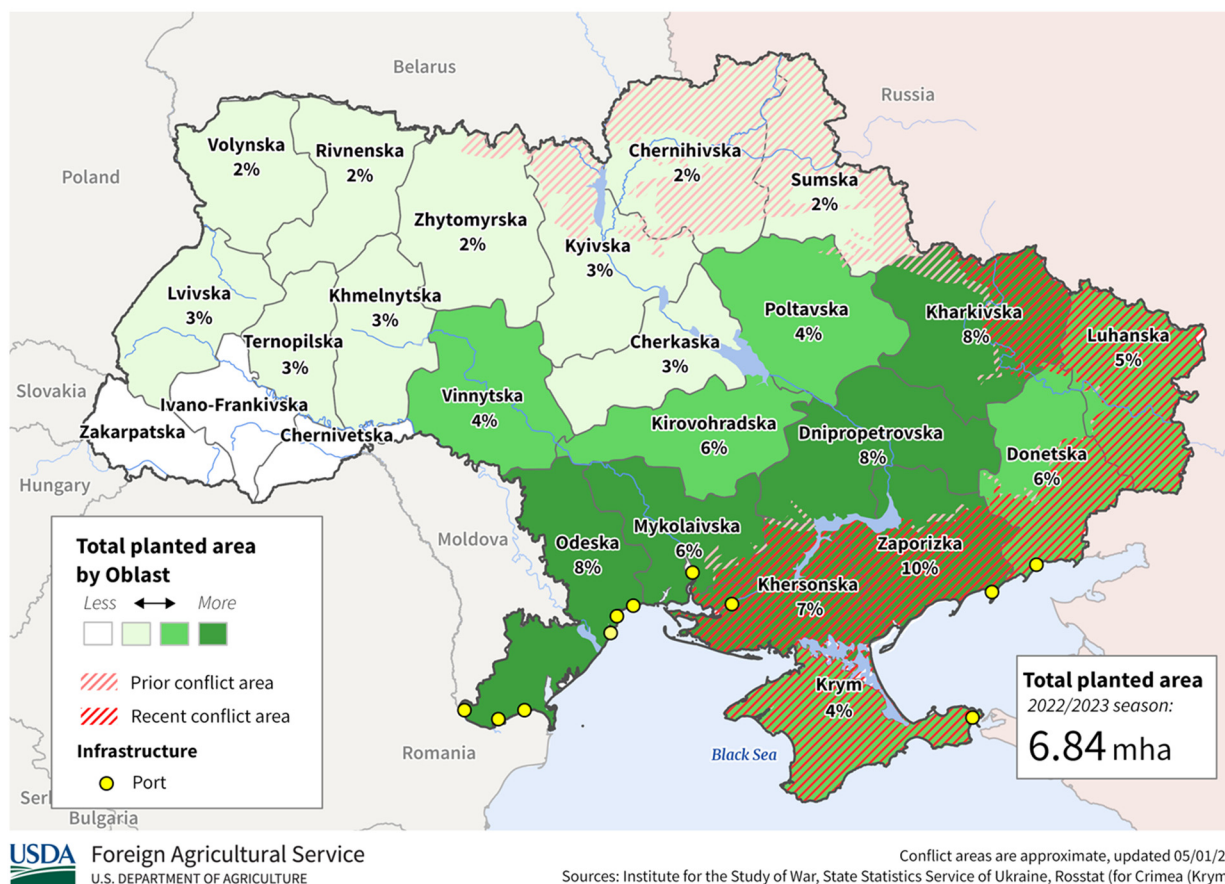
Circular Series
WAP 5-22
May 2022

World Agricultural Production

Ukraine Wheat: Russian Invasion of Ukraine Reduces MY 2022/23 Production by 35 Percent

Ukraine wheat production for marketing year (MY) 2022/23 is forecast at 21.5 million metric tons, down 35 percent from last year, and down 23 percent from the 5-year average. The decrease in production year-to-year is due to the ongoing Russian invasion of Ukraine. Yield is forecast at 3.68 tons per hectare, down 18 percent from last year, and down 9 percent from the 5-year average. Harvested area is forecast at 5.85 million hectares (mha), down 21 percent from last year, and down 16 percent from the 5-year average.

Ukraine Winter Wheat Planted Area Overlaid with Conflict



Approved by the World Agricultural Outlook Board

Winter wheat is typically planted from early September to mid-November and accounts for approximately 97 percent of total Ukraine wheat production. For the current season, Ukraine has cultivated several winter crops, including wheat, barley, rye, and rapeseed, but the most prevalent of these is wheat, which dominates the winter crop landscape and accounts for about 72 percent of total winter crop area for the MY 2022/23 season. Each winter, the State Statistics Service of Ukraine (SSSU) publishes planted area information for the winter crops. SSSU estimates do not include Crimea or conflict zones in the Donetsk and Luhansk oblasts, but these data were published pre-invasion and, therefore, include other areas currently under conflict. Winter wheat was planted on 6.54 mha, as compared to 6.71 mha in MY 2021/22, according to SSSU. Crimea wheat area is, on average, about 0.3 mha.

For area calculations, the country can be divided into areas in conflict zones and areas not in conflict zones. Based on information from the Ministry of Agriculture in Ukraine, that was corroborated with local contacts, the destruction/abandonment rate for conflict zones is forecast at 30 percent. This percent includes areas that have been destroyed because Russians have mined fields, bombs that have left unworkable craters and debris in fields, and areas that will be abandoned due to lack of fuel or manpower.

UKRAINE: NDVI Anomaly (November 9-16, 2021)



USDA Foreign Agricultural Service
U.S. DEPARTMENT OF AGRICULTURE

Source: USDA/NASA GLAM, MODIS 8-day NDVI Anomaly imagery

Regarding crop condition, once the crop emerged in the autumn of 2021, establishment conditions, as shown by the satellite-derived MODIS Normalized Difference Vegetation Index (NDVI), were mixed throughout the country but generally below average. This is largely due to dryness during

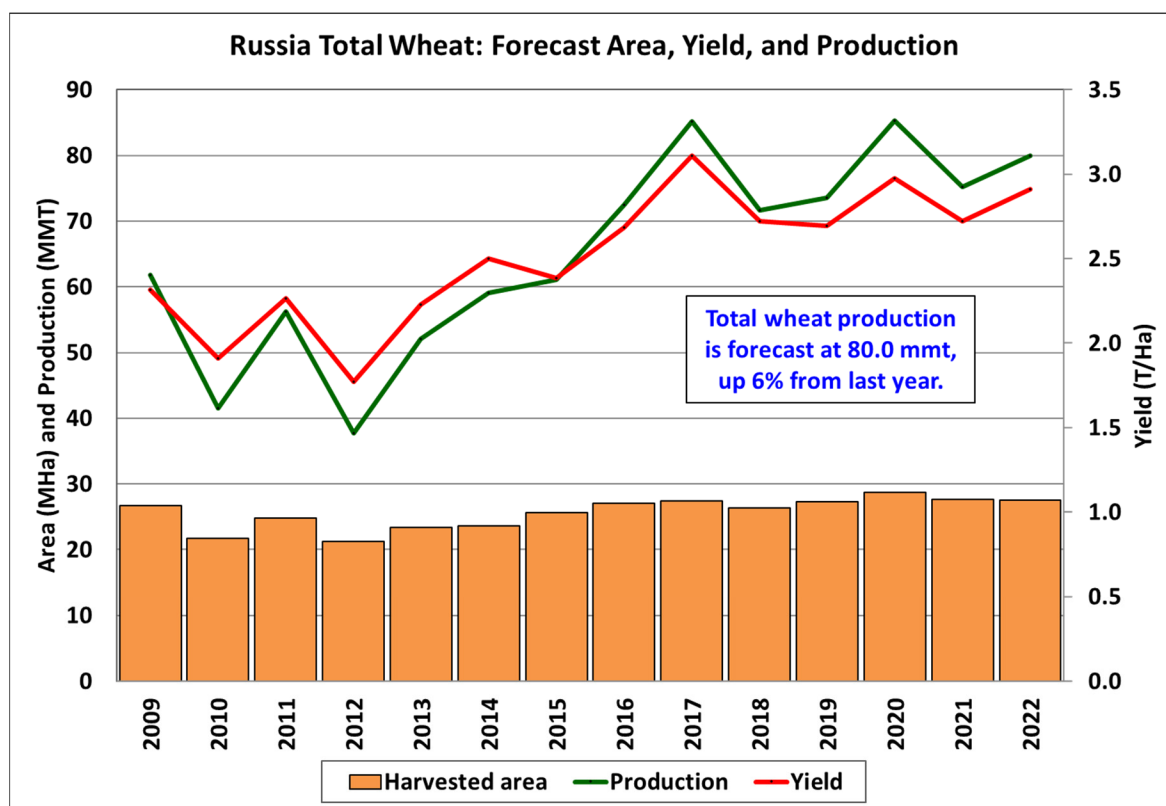
the month of October, when the crop was emerging and establishing. While conditions in autumn were not favorable, spring weather conditions are more important in determining final yield.

In general, yield for wheat has been increasing over the last decade, driven in part by increased use of inputs. When farmers applied less inputs in 2020 due to issues with sourcing inputs because of the COVID-19 pandemic, yield dropped. A similar drop in yield is expected for the current year because of ongoing issues sourcing inputs due to the invasion and the blockage of major ports in the Black Sea, which has disrupted supply chains.

Winter wheat harvest generally occurs from the end of June until mid-August. USDA crop production forecast for Ukraine include forecasted output from Crimea. (*For more information, please contact Katie.McGaughey@usda.gov.*)

Russia Wheat: Production Forecast for MY 2022/23 is the Third Highest on Record

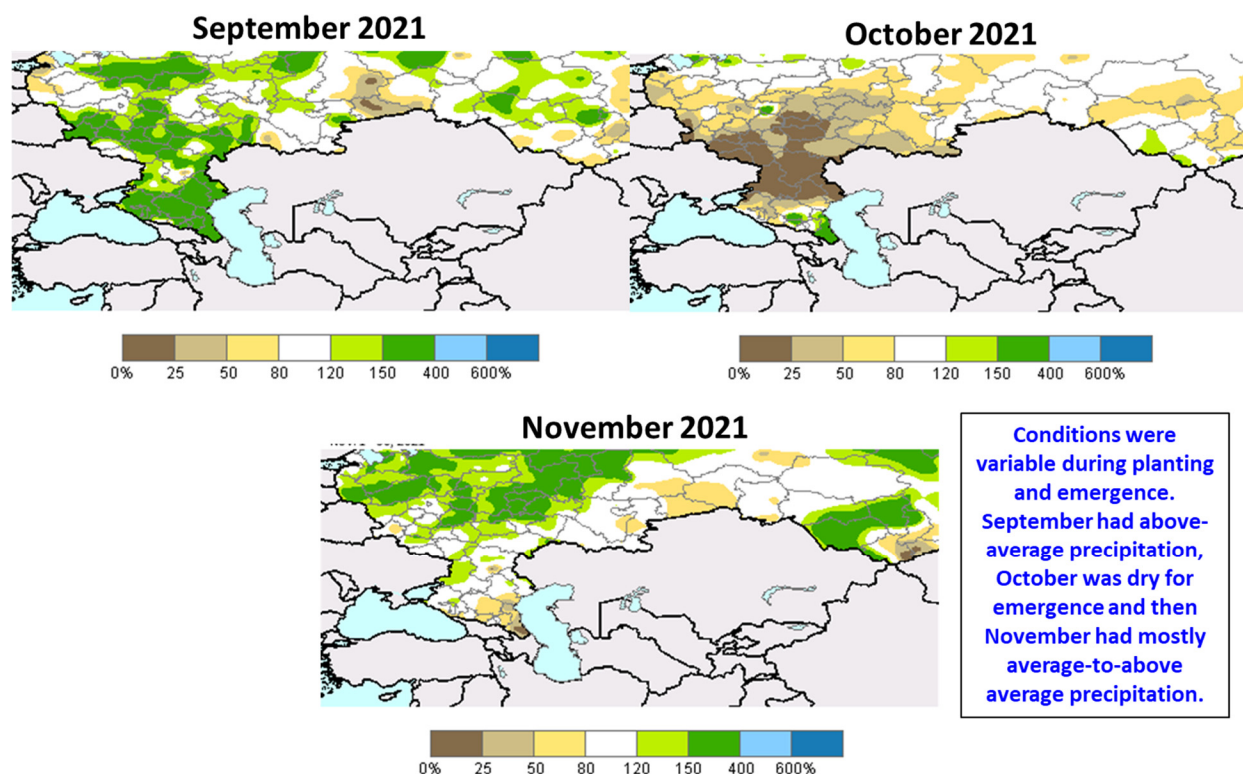
Russia wheat production for marketing year (MY) 2022/23 is forecast at 80.0 million metric tons (mmt), up 6 percent from last year and up 2 percent from the 5-year average. The forecast includes 58.5 mmt of winter wheat and 21.5 mmt of spring wheat. USDA crop production forecasts for Russia exclude estimated output from Crimea. Total wheat yield is forecast at 2.91 tons per hectare, up 7 percent from last year, and up 2 percent from the 5-year average. Total harvested area is forecast at 27.5 million hectares (mha), down marginally from last year, and essentially matching the 5-year average.



Winter wheat typically accounts for about 70 percent of total production. According to data from the Russian Ministry of Agriculture (MinAg), winter crop planted area is 18.4 mha. The planted area number includes winter wheat, barley, rye, and triticale. Winter wheat accounts for about 90 percent of the winter grain crops. Last year, according to the Russian MinAg, a higher crop was planted but due to ice crusting, winterkill was high. This year, however, ice crusting is not expected to have caused large amounts of abandonment. Analysis of Soil Moisture Active Passive (SMAP) imagery from NASA, showed minimal periods of freeze/thaw/freeze events, which would have indicated the presence of ice crusting.

Weather in the autumn was variable with above-average rainfall in September and November but below-average rainfall during October, which is a key month for crop establishment. In general, however, there was enough moisture for crop germination and development and the crop entered dormancy in above-average condition. Favorable moisture throughout April, as the crop has emerged from dormancy, has led to good early prospects, especially in the southern oblasts of European Russia. Crop yield development is still early, however, and will largely depend on May and June weather. Harvest of winter wheat will begin in July.

Monthly Percent of Normal Precipitation



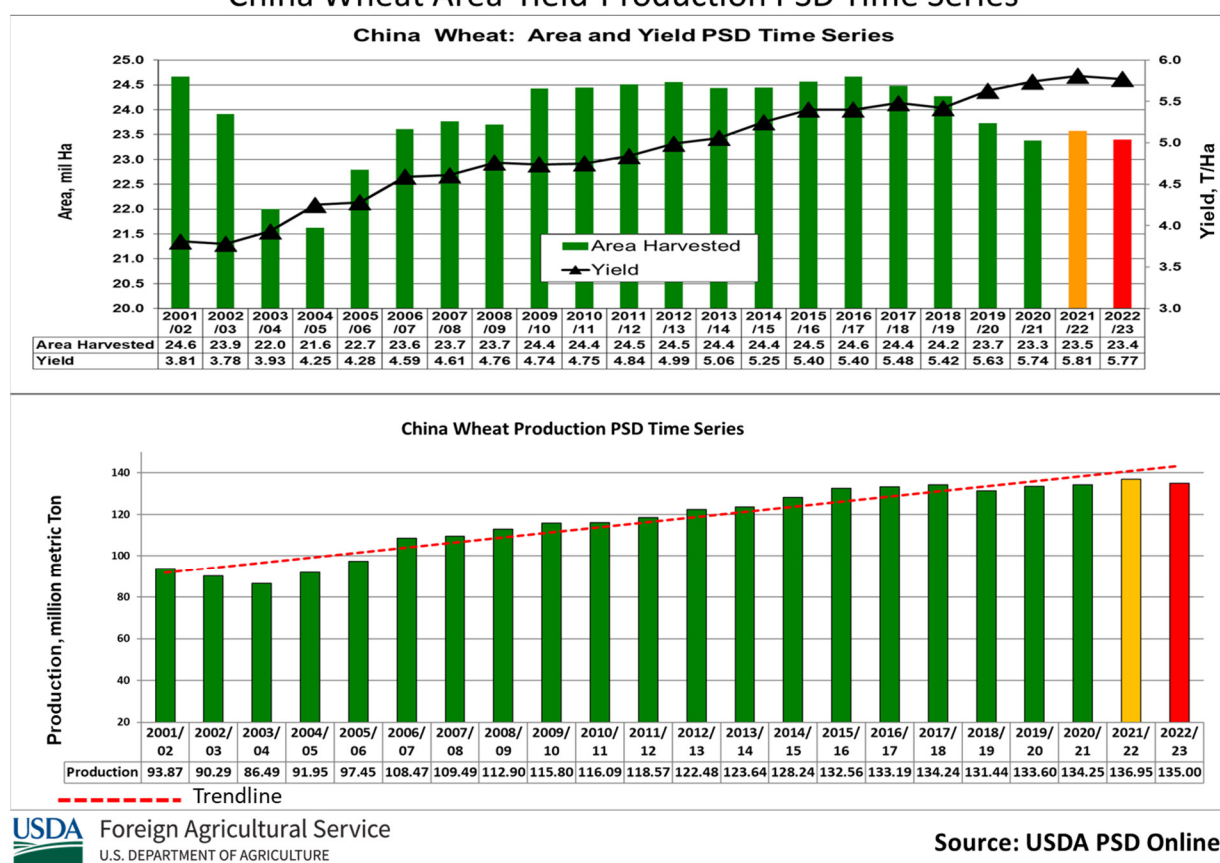
Spring wheat planting began in late April. Spring wheat is mainly planted in the regions bordering Kazakhstan: the Volga, Urals, and Siberian Districts of Russia. Planting will accelerate in all districts in May. Harvest of spring wheat will begin in late August.

Area, yield, and production estimates for Russia winter wheat and spring wheat are available on PSD Online. Select “Downloadable Data Sets” and open the zipped file for “Russia Wheat; Winter/Spring Area & Production.” (For more information, please contact Katie.McGaughey@usda.gov.)

China Wheat: MY 2022/23 Production Projected Down from Last Year

China’s marketing year (MY) 2022/23 wheat production is forecast at 135.0 million metric tons (mmt), down 1.95 million or approximately 1 percent from last year, but up approximately 1 percent from the 5-year average. Wheat area for MY 2022/23 is estimated at 23.4 mha, down approximately 1 percent from last year. Yield is forecast at 5.77 metric tons per hectare (mt/ha), down 1 percent from last year’s record of 5.81 mt/ha.

China Wheat Area-Yield-Production PSD Time Series



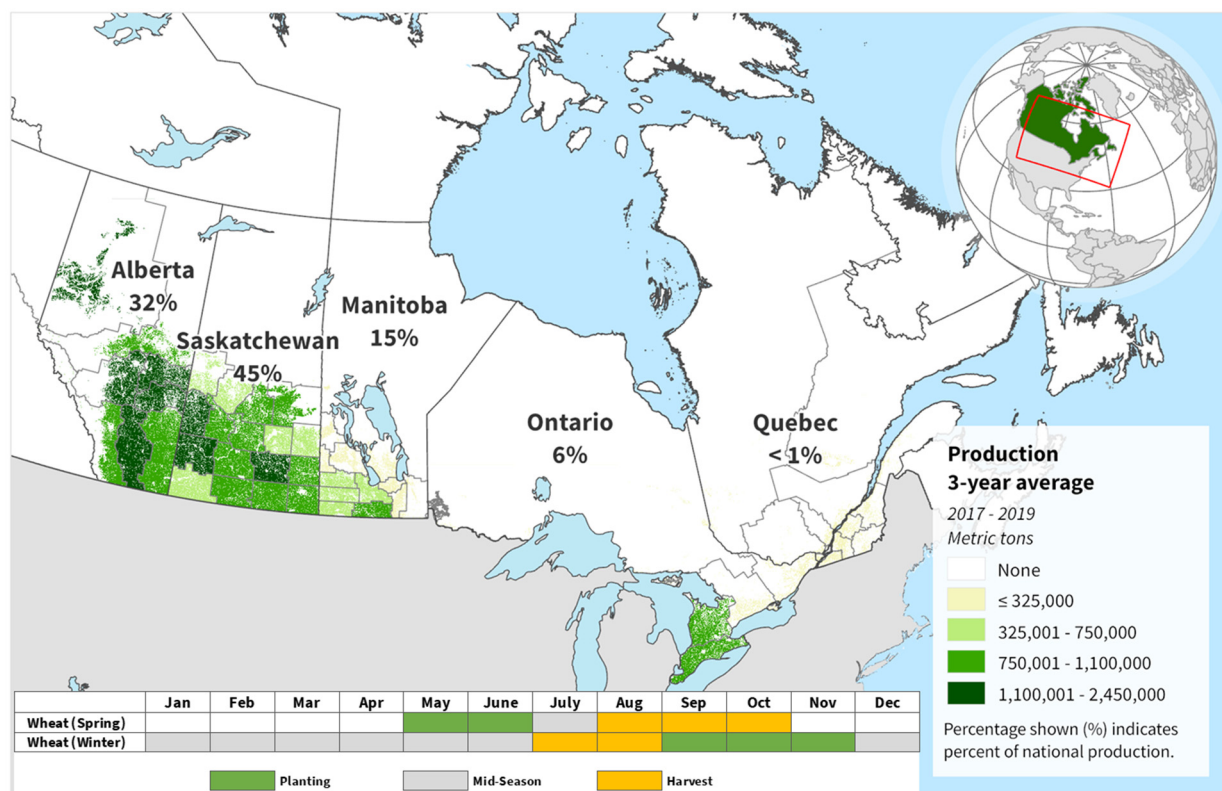
Overall, the season’s soil moisture conditions during planting, in September and October, were wetter-than-normal. Flooding in some locations across the major wheat growing regions resulted in delayed planting. By some estimates, about a third of the wheat area experienced delayed planting and slowed early growth and development. These factors likely reduced productivity compared to last year, as observed with satellite imagery. As the season progressed, favorable weather and soil moisture conditions prevailed across the major wheat regions, including Henan, Hebei, Shandong, Anhui, and Jiangsu provinces. The mid-to-late season satellite assessment indicated significant improvement during heading, flowering, and grain filling stages.

According to FAS/Beijing, this year's crop is likely to have overall poor grain quality, specifically low protein, broken kernels, and higher toxin rates. The bulk of the wheat will be bound for feed and ethanol use. Continued favorable weather and soil moisture conditions in April and May are likely to ensure favorable grain filling and maturity. Harvest is expected to start in mid-May and continue through the end of June. (For more information, please contact Dath.Mita@usda.gov).

Canada Wheat: MY 2022/23 Production Forecast Up 52 Percent

USDA forecasts Canada wheat production for marketing year (MY) 2022/23 at 33.0 million metric tons (mmt), up 11.3 mmt (52 percent) from last year's drought-ridden crop. Harvested area is estimated at 9.7 million hectares, up 5 percent from last year and 1 percent above the 5-year average. Yield is forecast at 3.40 metric tons per hectare, up 45 percent over last year. The forecast yield is more indicative of average when omitting last year's drought-stricken crop as an outlier.

Canada: Total Wheat Production



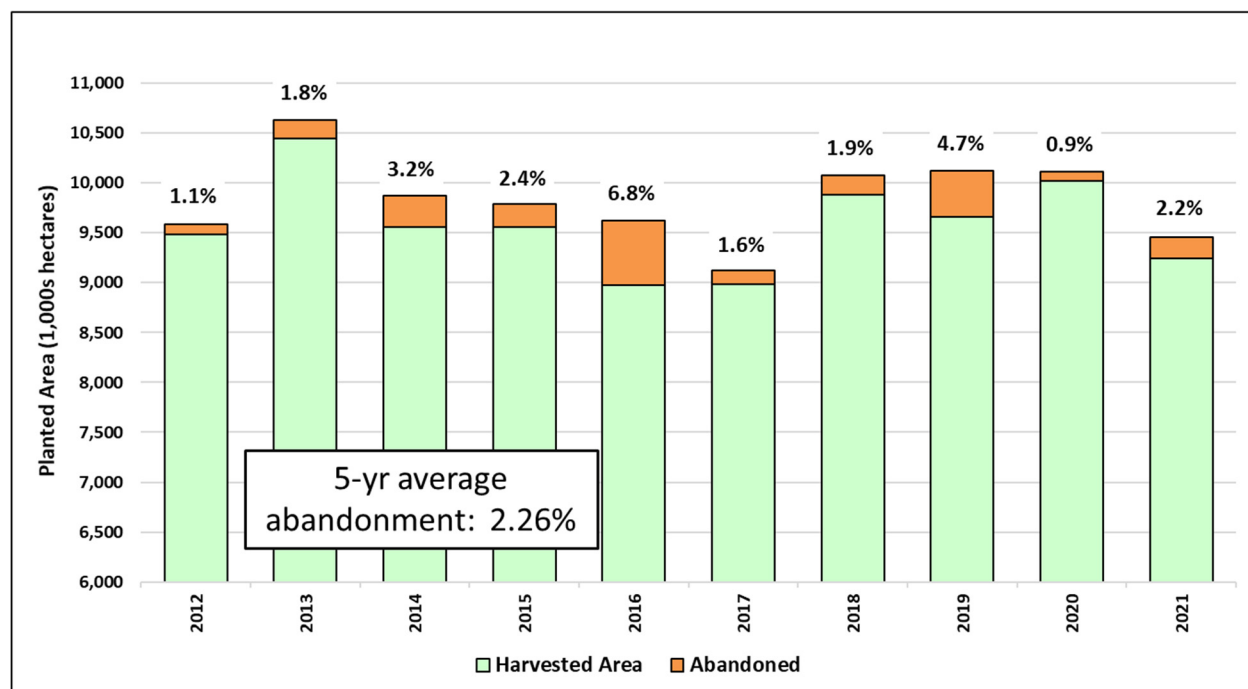
USDA Foreign Agricultural Service
U.S. DEPARTMENT OF AGRICULTURE

Sources: Statistics Canada, Estimated production by Small Area Data (SAD) Region; Agriculture and Agri-Food Canada (AAFC), Annual Crop Inventory 2018

Statistics Canada (StatCan) recently released its March 2022 Field Crop Survey results and expects planted area for wheat to increase more than 7 percent, overall, with increases in spring wheat (+7 percent) and durum wheat (+13 percent) more than offsetting reductions in winter wheat planting (-7 percent) in the fall of 2021. Higher prices, lower input requirements, and normal crop rotation have been cited as influencing farmers' decisions to plant more wheat.

The largest gains in area planted are in Saskatchewan, which has seen improved soil moisture conditions in many parts of the province. Agricultural areas in northern and eastern Saskatchewan and most of Manitoba have experienced an overabundance of precipitation in recent weeks, leading to flooding in many areas, particularly in southern Manitoba. Drought, however, remains a concern in southwestern Saskatchewan and southern Alberta, which saw dry conditions in the fall persist with low winter precipitation. Overall, these variable conditions are reflected in uneven planting progress, with planting in southern Alberta ahead of average, while planting in Saskatchewan and Manitoba is delayed throughout much of their agricultural regions.

Post-Winterkill Wheat Abandonment by Year

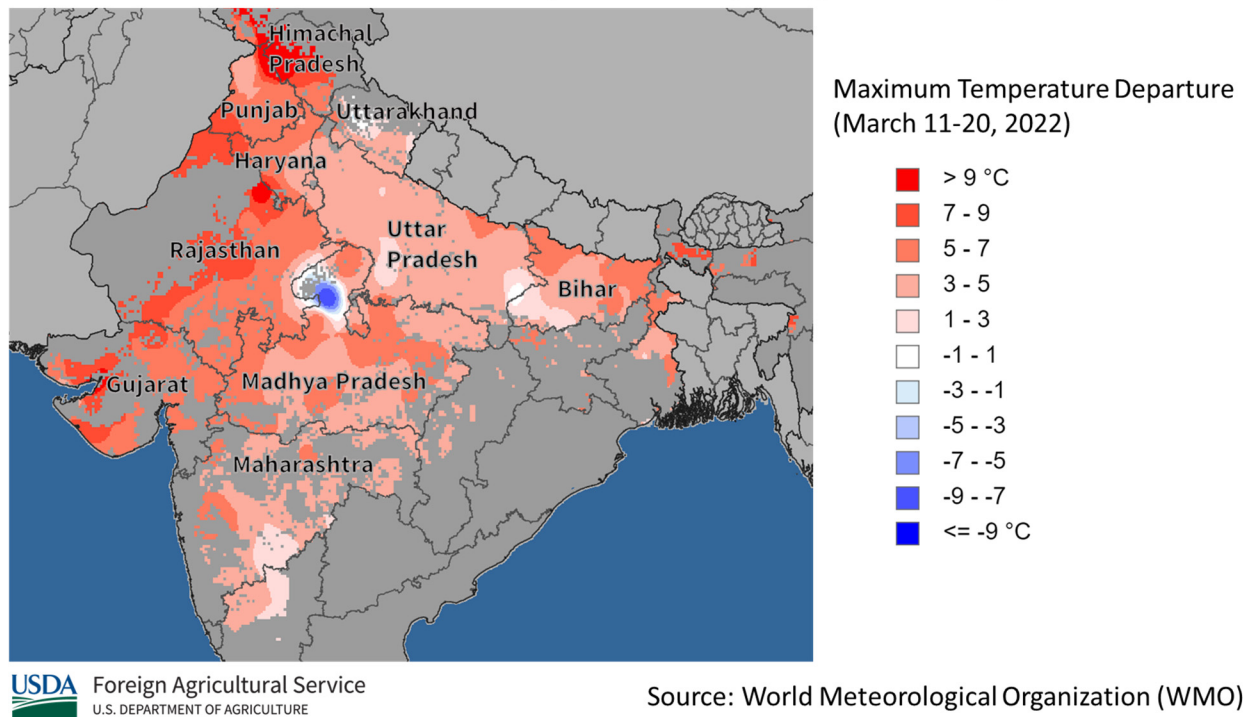


USDA adjusts its harvested area estimate on expectations of average crop abandonment of slightly more than 2 percent, which is similar to last year. The abandonment rates reported here for total wheat area do not consider winter wheat area planted in the previous fall, and subsequently lost to winterkill. Instead, these rates incorporate the winter wheat area remaining in the spring along with area planted to spring varieties, as reported by Statistics Canada. This method better accounts for spring varieties, the primary portion of Canada's wheat crop, and sharpens the focus of this metric towards the primary growing season. Spring varieties of wheat have lower abandonment rates than most other grains due, in part, to global and domestic demand, and lower-quality wheat harvested for feed use. Yield is expected to rebound with the assumption of a return to normal rainfall patterns. (For more information, please contact Aaron.Mulhollen@usda.gov.)

India Wheat: MY 2022/23 Production Slightly Impacted by Extreme Heat

USDA estimates marketing year (MY) 2022/23 wheat production at 108.5 million metric tons, down 1 percent from last year, but up 4 percent from the 5-year average. Area is estimated at 31.0 million hectares, down less than 1 percent from last year because farmers shifted some production to oilseeds. Yields are estimated to reach 3.50 metric tons per hectare, down 1 percent from last year.

India Wheat Grain Fill Impacted by Higher Temperatures



Extreme heat arrived weeks earlier than normal in the wheat belt. Punjab and Haryana, which account for 25 percent of total wheat, recorded extremely high temperatures at the start of grain fill. Temperatures reached 7 to 9 degrees Celsius above normal in Punjab and Haryana. The wheat procurement in Punjab reported small, shriveled grains, according to local sources. Uttar Pradesh, the largest producer, did not report extreme temperatures in the major wheat areas in the north. The central wheat belts of Rajasthan and Madhya Pradesh harvested wheat by March before the extreme temperatures arrived.

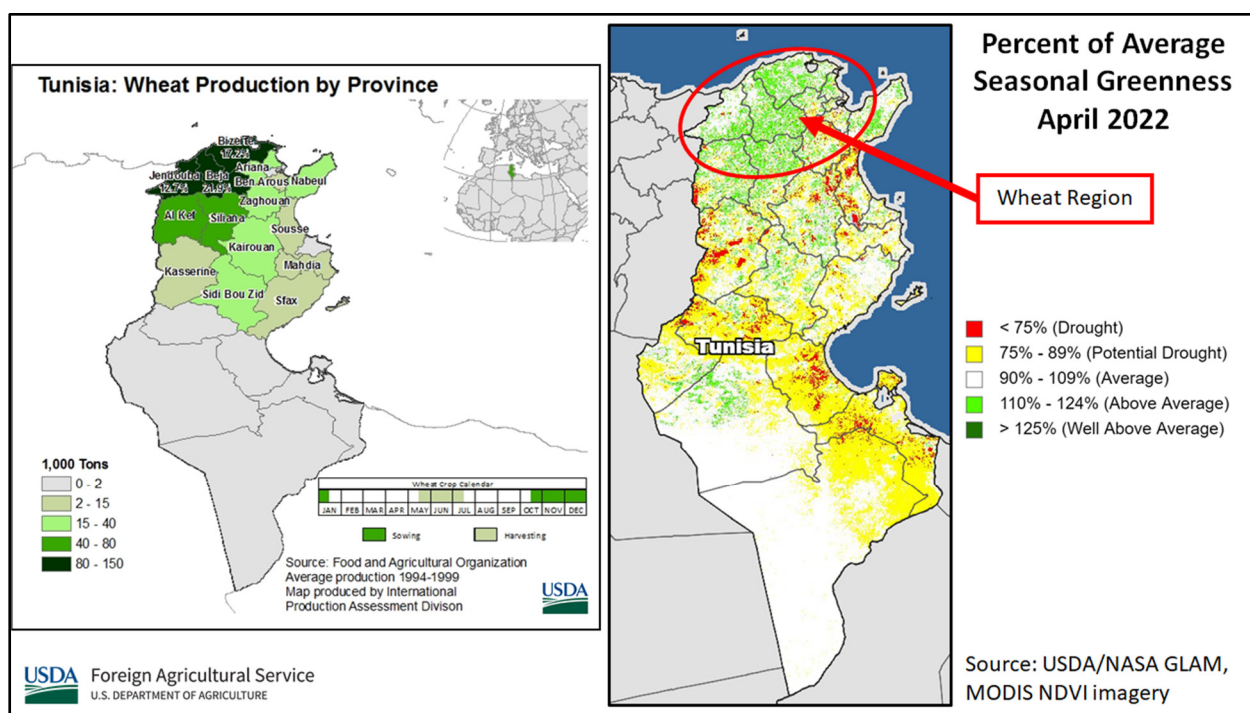
Wheat is grown only in the *rabi* season. It is planted in early November until January and harvested from late February until April. (For more information, please contact Arnella.Trent@usda.gov.)

Tunisia Wheat: Consistent Fall and Spring Rainfall Sets Up a Solid MY 2022/23 Harvest

Rainfed Wheat; March 9, 2022; Northern Tunisia



USDA forecasts marketing year (MY) 2022/23 wheat production in Tunisia at 1.3 million metric tons (mmt), compared to 1.2 mmt last year and the 1.2 mmt 5-year average. Harvested area is estimated at 0.5 million hectares (mha), the same as last year, but down 5 percent from the 5-year average. Yield is forecasted at 2.48 tons per hectare, 9 percent above last year and 16 percent above the 5-year average.

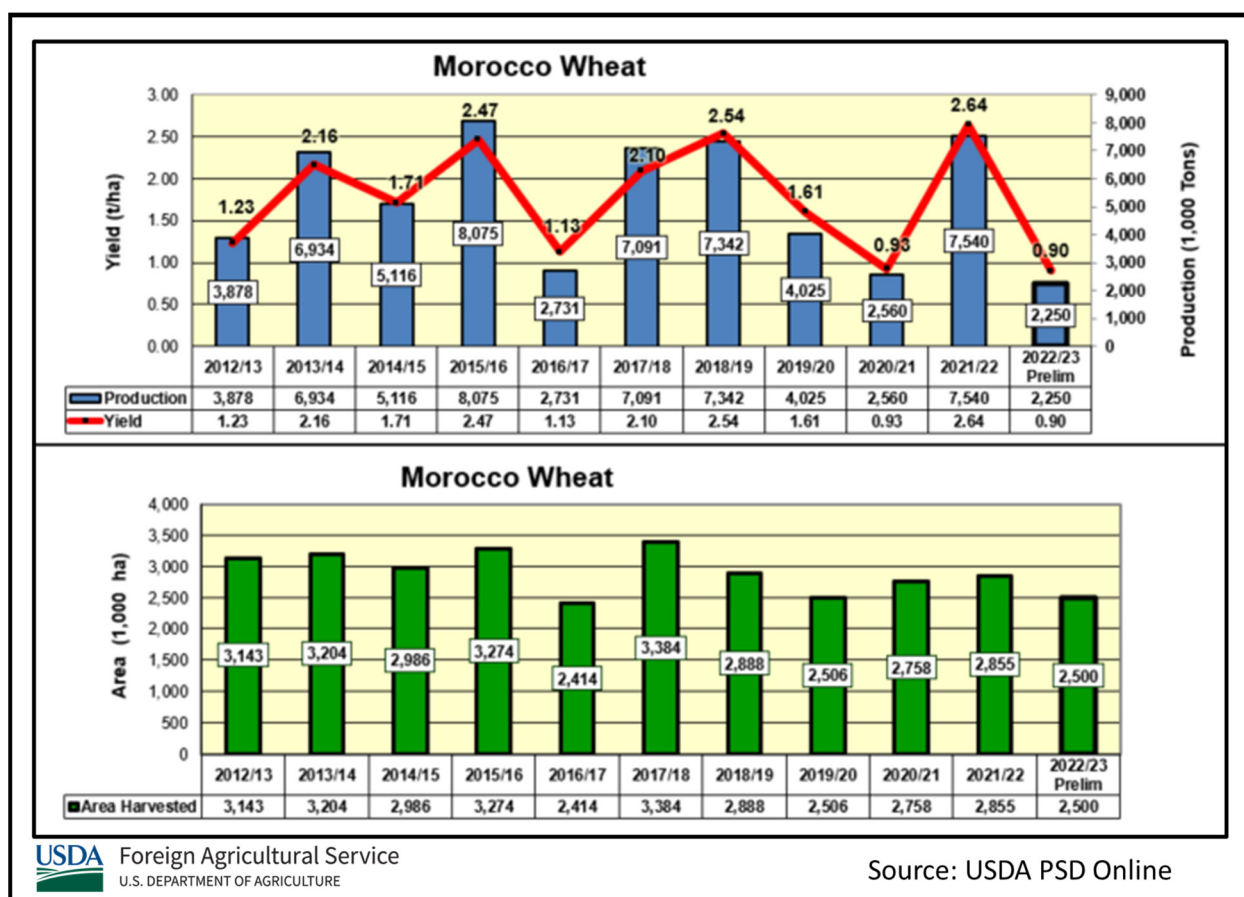


Despite adequate rainfall during the October-December sowing period, farmers seeded smaller areas due to Tunisia's general economic uncertainty and farmers' unwillingness to take on financial risks. Frequent but moderate spring showers have continued to supply critical moisture for wheat in Tunisia. Tunisia's crop is filling, and further light rainfall would favorably finish the crop, with an anticipated June harvest. Satellite-derived Percent Average Seasonal Greenness for April shows good crop conditions in Tunisia's wheat belt along the northern coast. According to the Ministry of Agriculture, durum wheat accounted for 89 percent while common wheat comprised just 11 percent of the total planted wheat area. During March 2022, a team from USDA's Foreign Agricultural Service in Tunis traveled through Tunisia's wheat region conducting field visits and meeting with producers and found wheat to be in very good condition during flowering. (For more information, please contact Bryan.Purcell@usda.gov.)

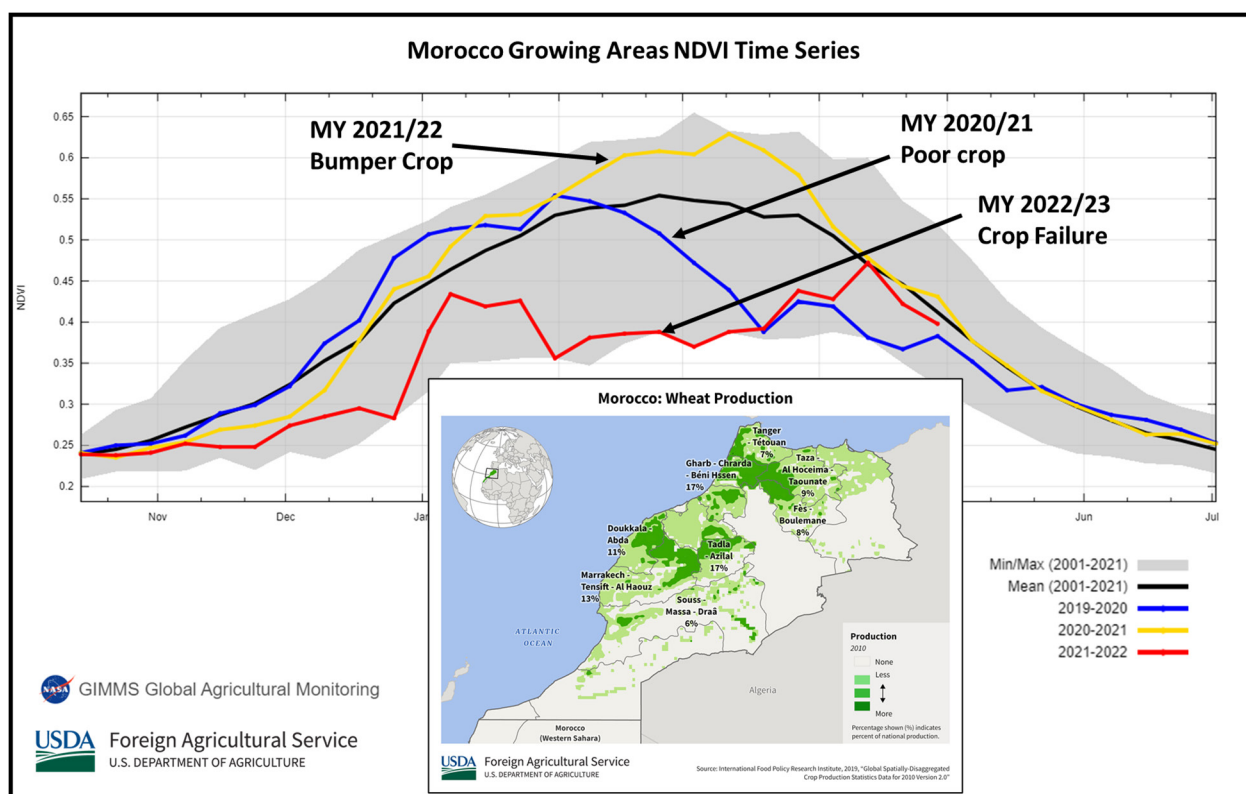
Morocco Wheat: Devastating Drought Diminishes MY 2022/23 Crop; 70 Percent Down



Morocco marketing year (MY) 2022/23 wheat production is forecast at 2.3 million metric tons (mmt), down 5.3 mmt or 70 percent from last year's bumper crop of 7.5 mmt. This is also down 61 percent from the 5-year average of 5.7 mmt. Harvested area is estimated at 2.5 million hectares (mha), down 12 percent from last year and 13 percent from the 5-year average. Yield is forecast at 0.90 tons per hectare (t/ha), down 66 percent from last year's estimate of 2.64 t/ha and down 54 percent from the 5-year average of 1.96 t/ha.



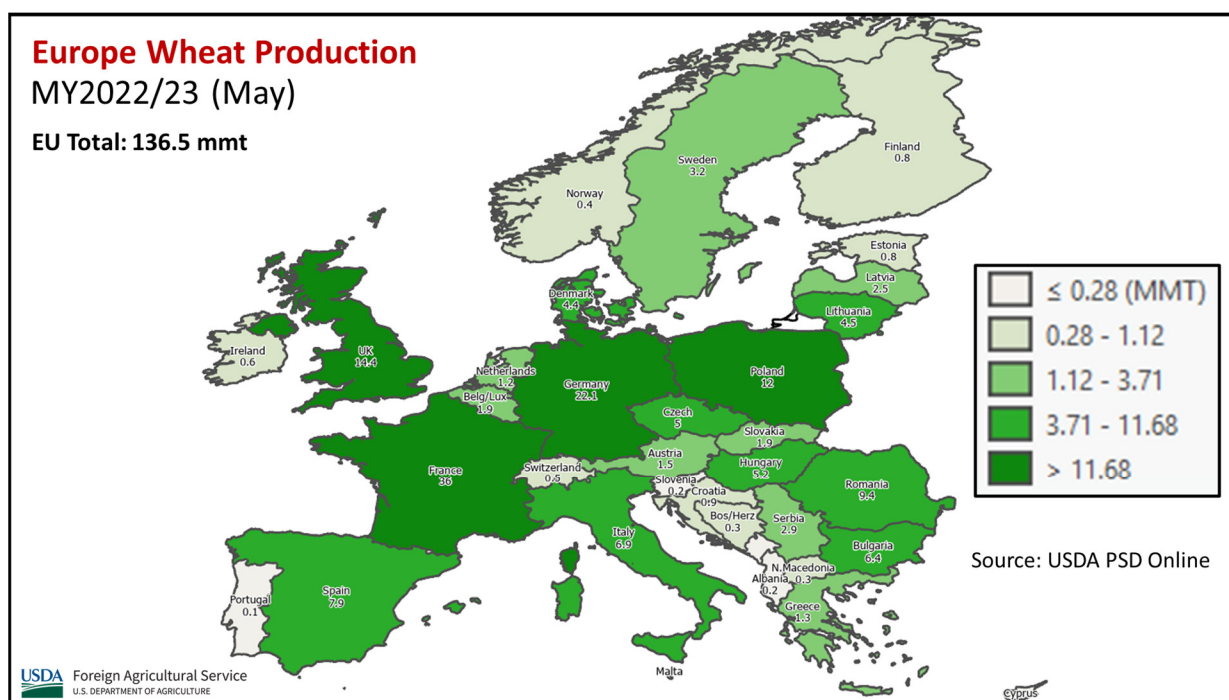
The autumn planting season in Morocco was one of the driest in 30 years. The drought was particularly acute in the large central and southern cereals regions. The dryness delayed and reduced plantings and devastated crop emergence and development. Rainfall remained nearly absent until March when above-average spring rains greened-up dormant grasses but did little to nothing for wheat, which had suffered through numerous months of drought. Input uses are likely minimal in these conditions and livestock have been commonly seen grazing in abandoned wheat fields. The satellite-derived Normalized Difference Vegetation Index (NDVI) chart clearly displays the MY 2022/23 crop's failure compared to other seasons.



During March 2022, a team from USDA's Foreign Agricultural Service in Rabat traveled through the major central and southern wheat region, conducting field visits and meeting with producers. Their trip confirmed the extremely poor grain conditions across most of the country. (*For more information, please contact Bryan.Purcell@usda.gov.*)

European Union Wheat: Good Conditions for MY 2022/23

Wheat production for marketing year (MY) 2022/23 in the European Union (EU) is forecast at 136.5 million metric tons (mmt), down 1.9 mmt from last year, but 3 percent above the 132.7 mmt 5-year average. Harvested area is estimated at 24.1 million hectares (mha), down 0.1 mha from last year but 0.2 mha above the 5-year average. Yield is forecast at 5.66 tons per hectare (t/ha), 1 percent below last year but 2 percent above the 5-year average.



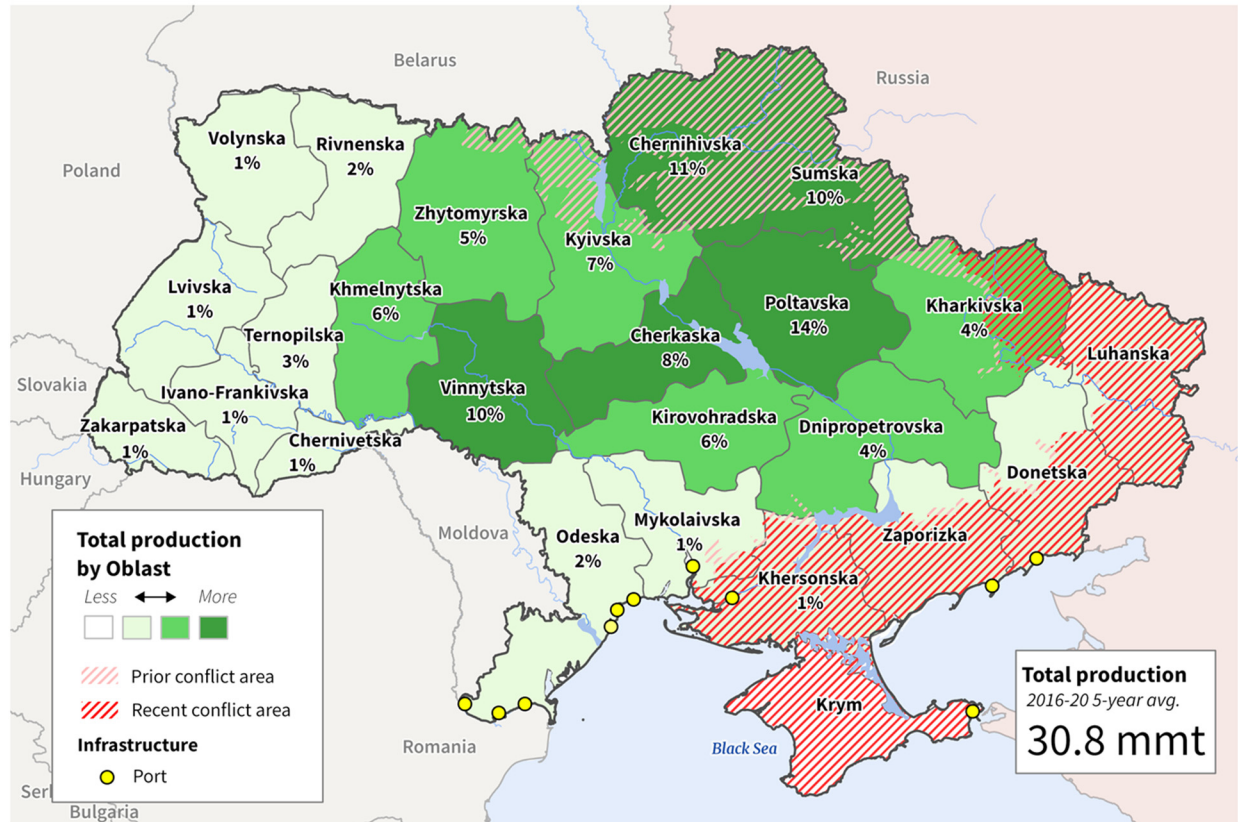
Overall conditions across Europe have been good since planting of winter wheat last autumn. There was little to no winterkill and moisture has been mostly satisfactory. Drought in Spain was alleviated by March rainfall. Recently, dryness has increased in the EU's biggest wheat producer, France, but the relatively cool spring temperatures have limited stress at this point. Significant rainfall during May would be needed to mitigate concerns. Production in the 3-biggest wheat producers is forecast at 36.0 mmt in France (37.0 mmt last year), 22.1 mmt (21.5 mmt) in Germany, and 12.0 mmt (12.1 mmt) in Poland.

For country-specific area, yield, and production estimates within the European Union (EU), please go to PSD Online at <https://apps.fas.usda.gov/PSDOnline/app/index.html#/app/home>, and select "Downloadable Data Sets." Select the zipped file for "EU Countries Area & Production." (For more information, please contact Bryan.Purcell@usda.gov.)

Ukraine Corn: Russian Invasion of Ukraine Drives MY 2022/23 Production Down 54 Percent

Ukraine corn production for marketing year (MY) 2022/23 is forecast at 19.5 million metric tons, down 54 percent from last year, and down 42 percent from the 5-year average. Yield is forecast at 5.57 tons per hectare, down 27 percent from last year, and down 17 percent from the 5-year average. Harvested area is forecast at 3.5 million hectares (mha), down 36 percent from last year, and down 30 percent from the 5-year average.

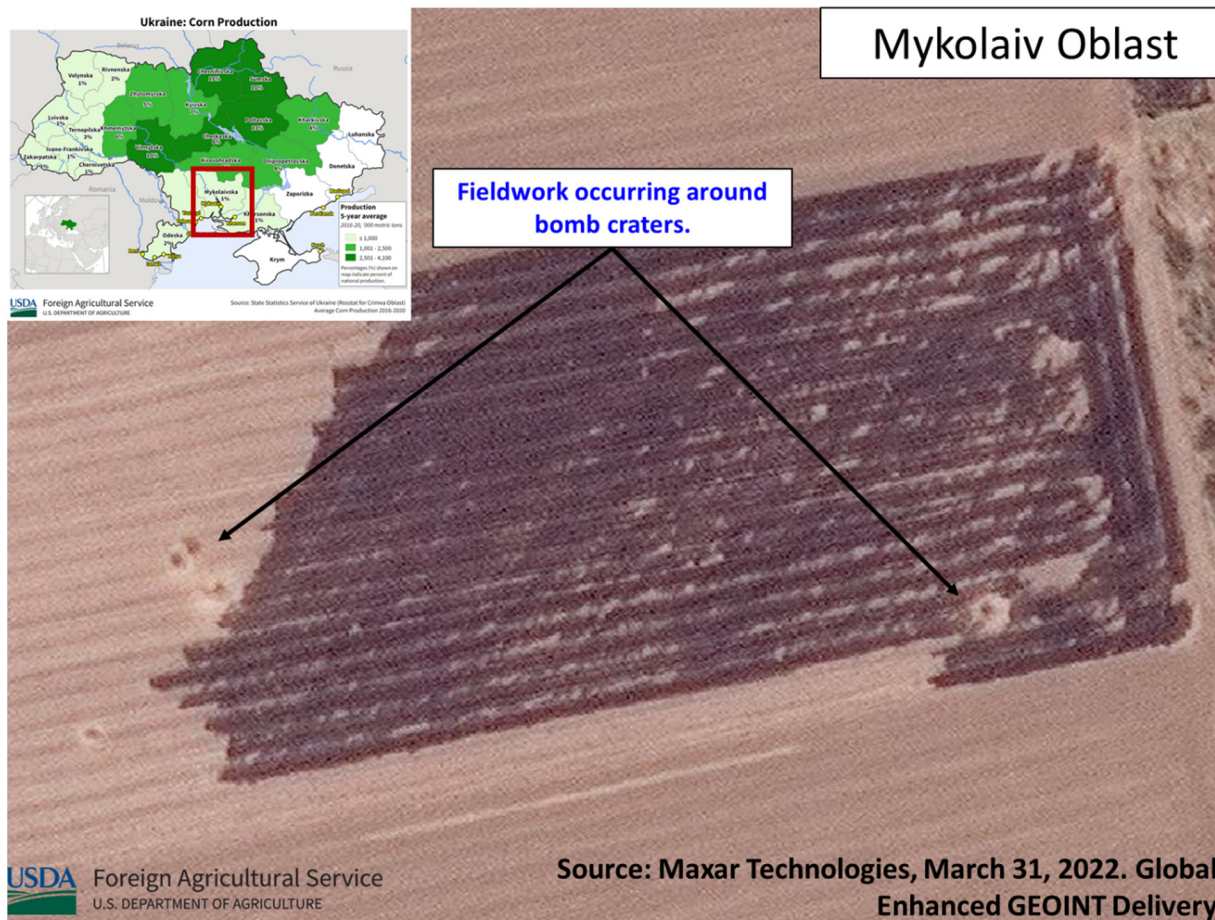
Ukraine: Corn Production and Conflict Areas



USDA Foreign Agricultural Service
U.S. DEPARTMENT OF AGRICULTURE

Conflict areas are approximate, updated 05/01/22.
Sources: Institute for the Study of War, State Statistics Service of Ukraine, Rosstat (for Crimea (Krym))

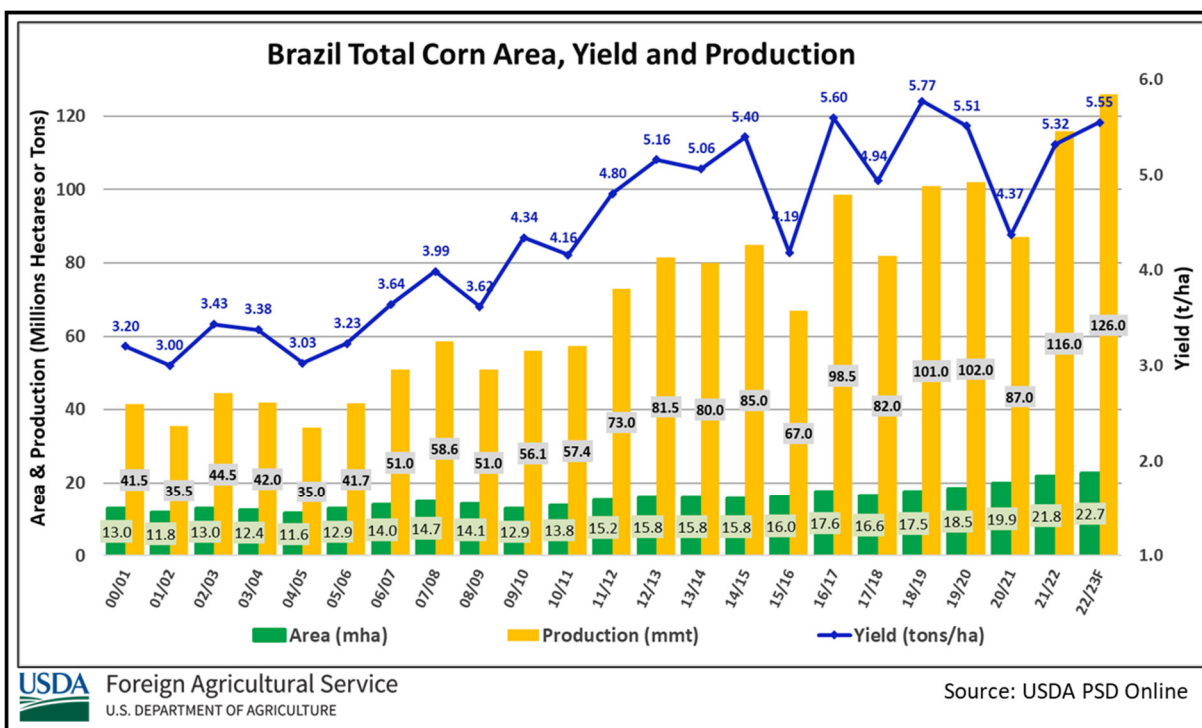
According to the Ministry of Agriculture’s operational planting progress data, planting is ongoing and as of May 9th, 2.63 mha have been planted. Planting will continue throughout May. For area forecasting, the country can be divided into areas in conflict zones and areas not in conflict zones. Based on information from the Ministry of Agriculture in Ukraine, that was corroborated with local contacts, farmers will not plant about 30 percent of the area in conflict zones. This percent includes areas that have been destroyed because Russians have mined fields, areas that have been left unworkable due to bomb craters and debris in fields (as verified by commercial satellite imagery), and areas that cannot be planted due to lack of seeds, fuel, or manpower. Even areas in the north, where Russian forces have been pushed back, are considered to remain “in conflict” due to the field mining. De-mining fields is an expensive, time-consuming process according to the Ministry of Agriculture, and will continue for a long time to come. FAS analysts who conducted crop travel in Ukraine in 2019, saw fields from the first and second world wars that still have unexploded ordnances.



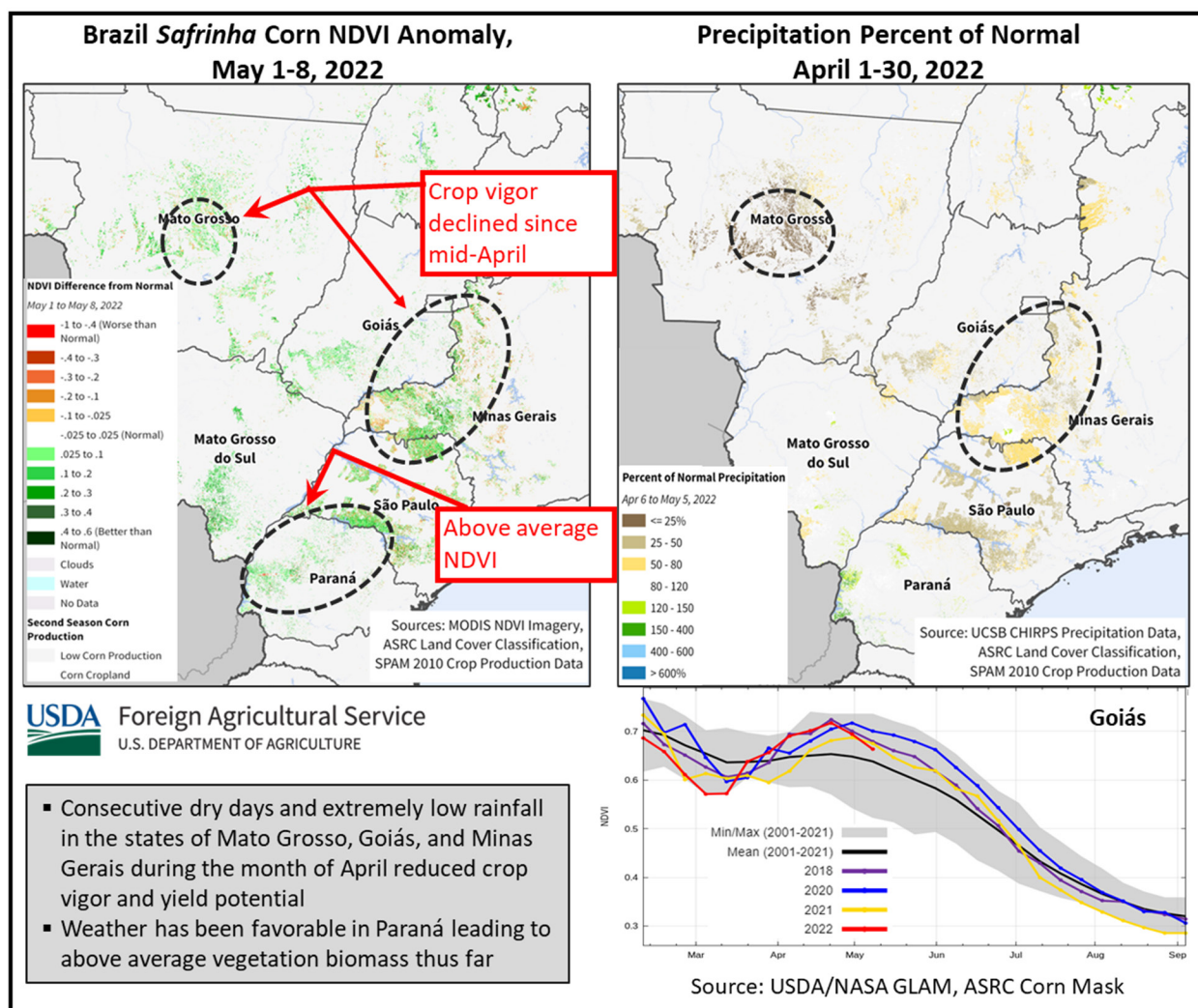
Yield for corn has been increasing over the last decade due to an increase in the use of improved seeds and fertilizer. In 2020, even though weather conditions were favorable, yield dropped due to issues with sourcing inputs and seeds because of the COVID-19 pandemic. A similar drop in yield is expected for the current year due to the invasion and the blockage of major ports in the Black Sea, which has disrupted supply chains. USDA crop production forecast for Ukraine include forecasted output from Crimea. *(For more information, please contact Katie.McGaughey@usda.gov.)*

Brazil Corn: MY 2021/22 *Safrinha* Production Unchanged, But Yield Reduced Amid Drought Conditions in April

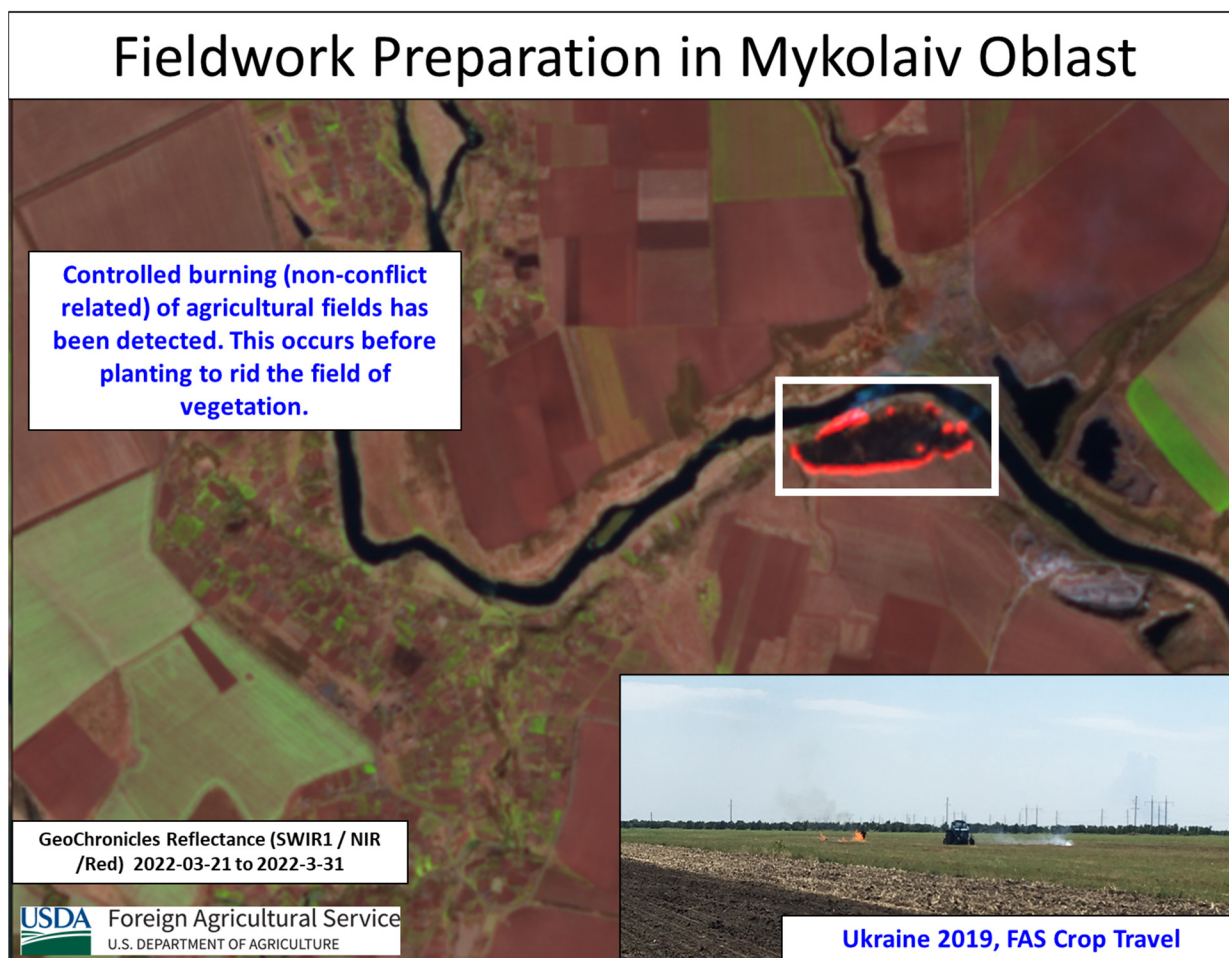
USDA estimates Brazil total corn production for marketing year (MY) 2021/22 at 116.0 million metric tons (mmt), unchanged from last month, and larger than the MY 2020/21 crop by 29.0 mmt (33 percent). Total harvested area for all three corn crops in MY 2020/21 is estimated at 21.8 million hectares (mha), up 0.7 mha (3 percent) from last month, and up 1.9 mha (10 percent) from MY 2020/21. Yield is estimated at 5.32 tons per hectare, 3 percent lower than last month, 22 percent above last year's diminished crop, and 3 percent above the 5-year average. The national corn yield was reduced this month due to negligible rainfall amounts in the center-west states over the last 2 to 4 weeks.



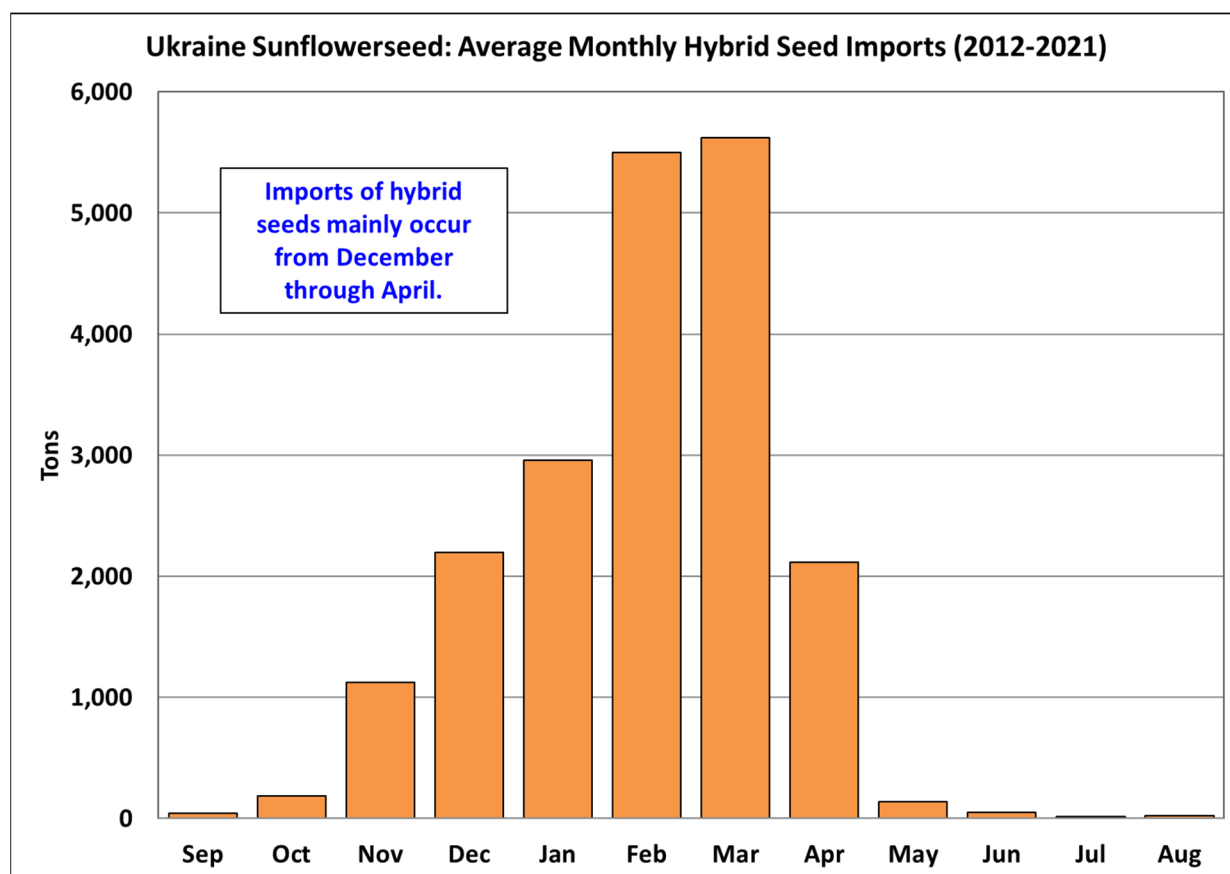
Harvest for the smaller first-season crop (about 20 percent of total production) is underway and continues through June. In the April report, this crop was estimated at 24.9 mmt by *Companhia Nacional de Abastecimento* (CONAB, an agency in the Brazilian Ministry of Agriculture). This is 3.4 mmt lower than initial projections due to dry weather in southern Brazil from mid-November through mid-January.



Brazil's second season corn crop, *safrinha*, is 77 percent of total production. The majority of the *safrinha* crop was planted within an optimal planting window with a substantial area increase and good yield prospects. However, precipitation has petered out over the last 3 weeks in south-central and western Mato Grosso, southern Goiás, and western Minas Gerais. April and May rainfall is central to achieve the full yield potential for the *safrinha* crop. Total rainfall in central and southern Mato Grosso for the month of April ranged from 20-35 mm, whereas amounts were even lower in Goiás and Minas Gerais (less than 15 mm in some regions) when most of the crop advanced to sensitive flowering and grain-fill stages. Crop vigor, measured with the satellite-derived Normalized Difference Vegetation Index (NDVI), declined since mid-April when rainfall dropped in these 3 states (55 percent of *safrinha* area). Some of these losses will be offset by record area and favorable conditions further south in the states of Paraná and Mato Grosso do Sul. *Safrinha* harvest begins in May and continues through September. USDA forecasts the new MY 2022/23 Brazil corn production at a record 126.0 mmt. (For more information, please contact Sunita.Yadav-Pauletti@usda.gov.)



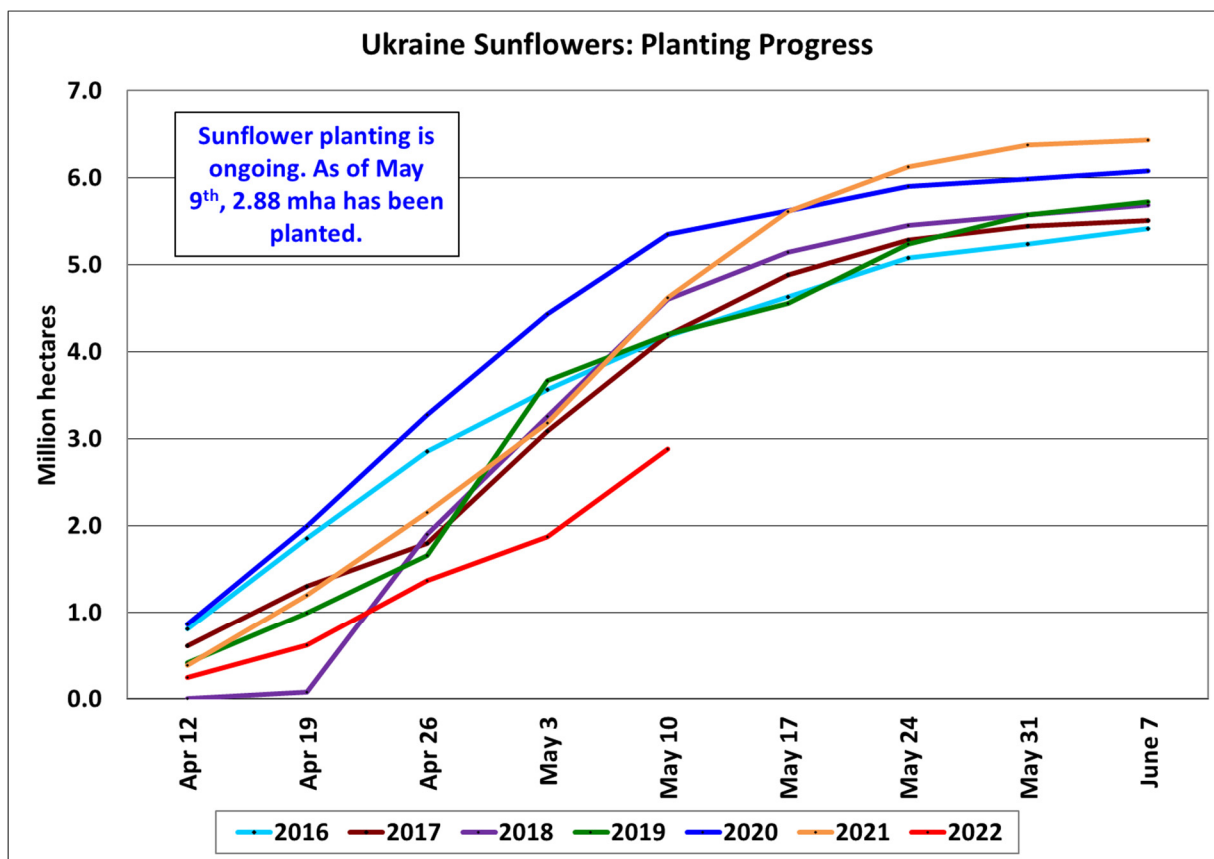
Ukraine sunflowerseed production for marketing year 2022/23 is forecast at 11.0 million metric tons, down 37 percent from last year and down 28 percent from the 5-year average. Yield is forecast at 2.08 tons per hectare, down 16 percent from last year and down 9 percent from the 5-year average. Harvested area is forecast at 5.3 million hectares (mha), down 25 percent from last year and down 22 percent from the 5-year average.



USDA Foreign Agricultural Service
U.S. DEPARTMENT OF AGRICULTURE

Source: Trade Data Monitor

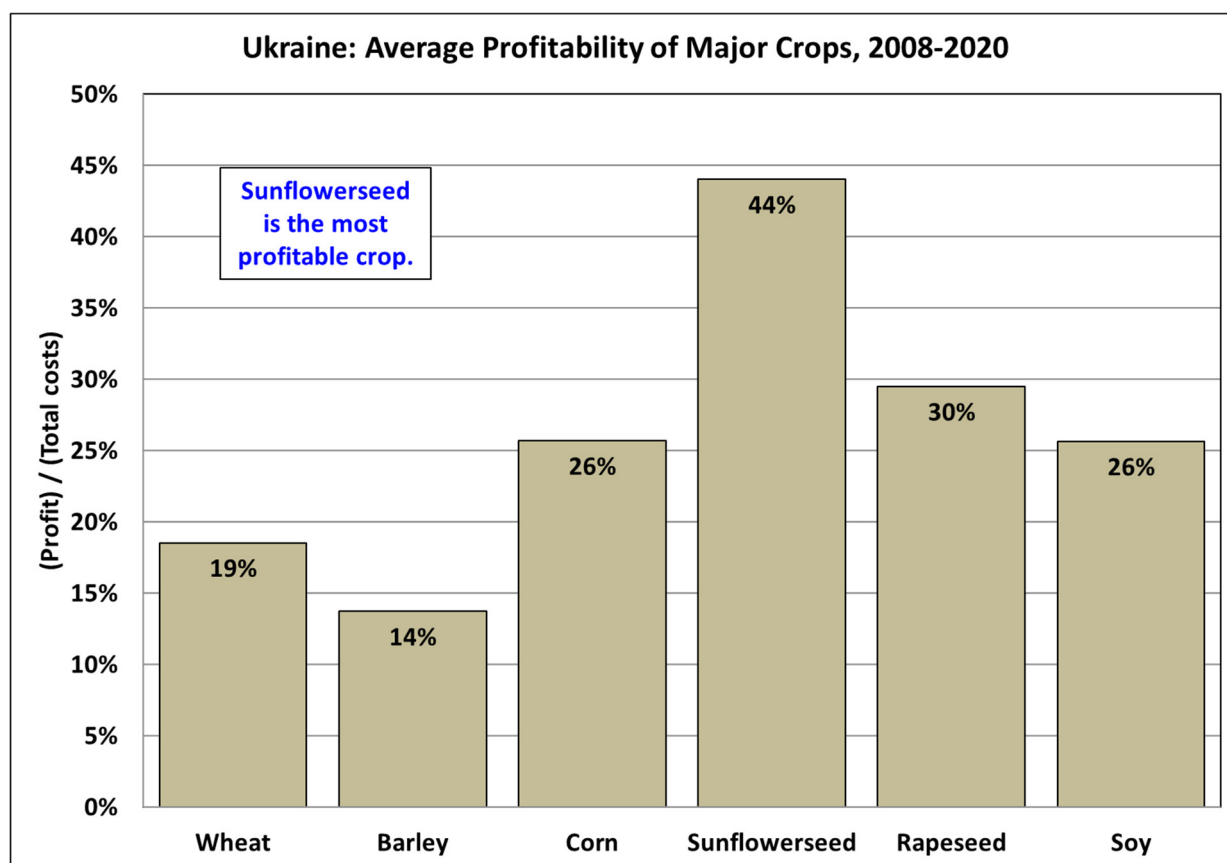
For area calculations, the country can be divided into areas in conflict zones and areas not in conflict zones. Based on information from the Ministry of Agriculture in Ukraine, that was corroborated with local contacts, farmers will not plant about 30 percent of the area in conflict zones. This percent includes areas that have been destroyed because Russians have mined fields, areas that have been left unworkable due to bomb craters and debris in fields, and areas that cannot be planted due to lack of seeds, fuel, or manpower.



USDA Foreign Agricultural Service
U.S. DEPARTMENT OF AGRICULTURE

Source: Ministry of Agriculture

According to operational planting data published by the Ministry of Agriculture as of May 9th, 2.88 mha have been planted. The field activity is verified by satellite imagery, which shows agricultural field burning (non-conflict related) that occurs prior to planting. Planting will continue throughout May. Area for sunflowerseed is prioritized due to the high profitability of the crop.



USDA Foreign Agricultural Service
U.S. DEPARTMENT OF AGRICULTURE

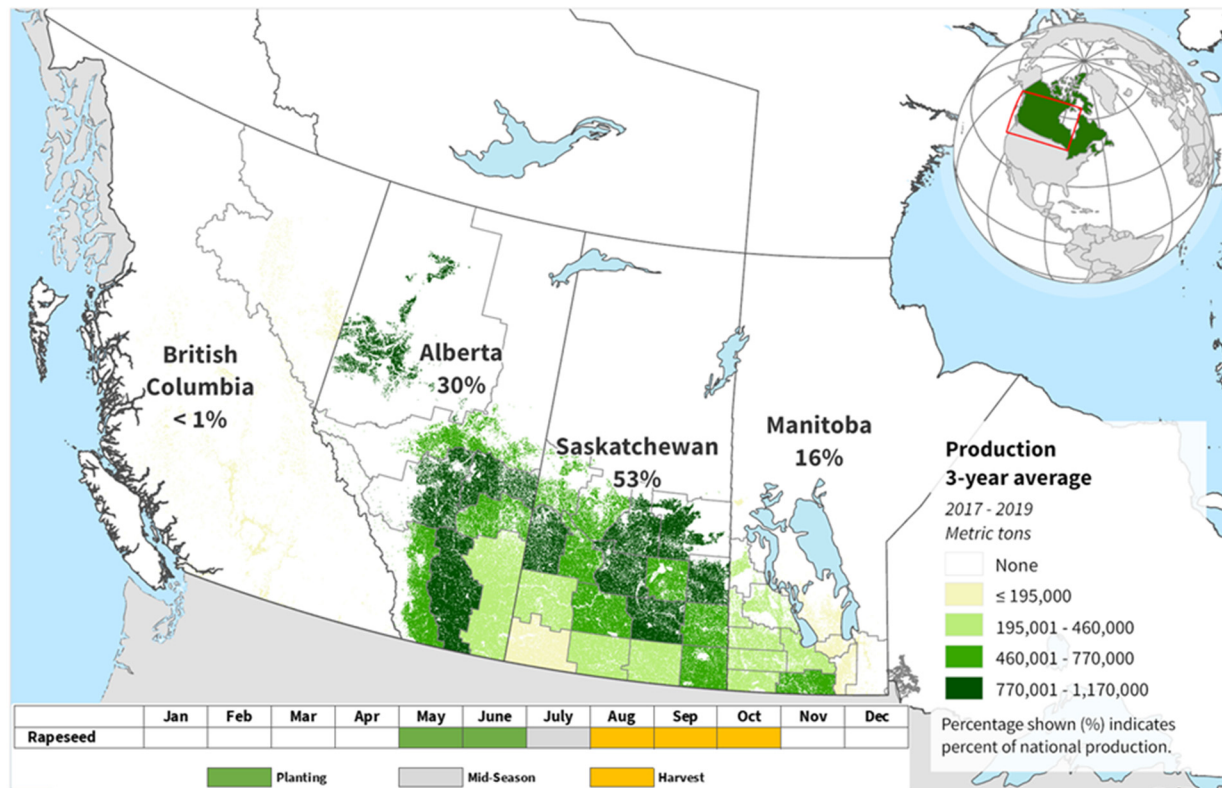
Source: State Statistics Service of Ukraine

Yield for sunflowers has been increasing over the last decade due to an increase in the use of hybrid seeds and fertilizer. Ukrainian farmers typically import the hybrid seeds between December and April each year. Since the conflict began at the end of February, there will be fewer hybrid seeds for planting because March and April are key months for importing seeds (accounting for over half the seed imports on average). In 2020, yield dropped due to issues with sourcing inputs and seeds because of the COVID-19 pandemic. A similar drop in yield is expected for the current year due to the invasion and the blockage of major ports in the Black Sea, which has disrupted supply chains. USDA crop production forecast for Ukraine include forecasted output from Crimea. (*For more information, please contact Katie.McGaughey@usda.gov.*)

Canada Rapeseed: MY 2022/23 Production Increases 59 Percent due to Improved Yield

USDA forecasts Canada rapeseed production for marketing year (MY) 2022/23 at 20.0 million metric tons (mmt), up 7.4 mmt (59 percent) from last year. Harvested area is estimated at 8.6 million hectares, down 4 percent from last year and 3 percent below the 5-year average. Yield is forecast at 2.33 metric tons per hectare, up 66 percent from last year. This yield forecast is a return to average when omitting last year's drought-ravaged crop.

Canada: Rapeseed Production

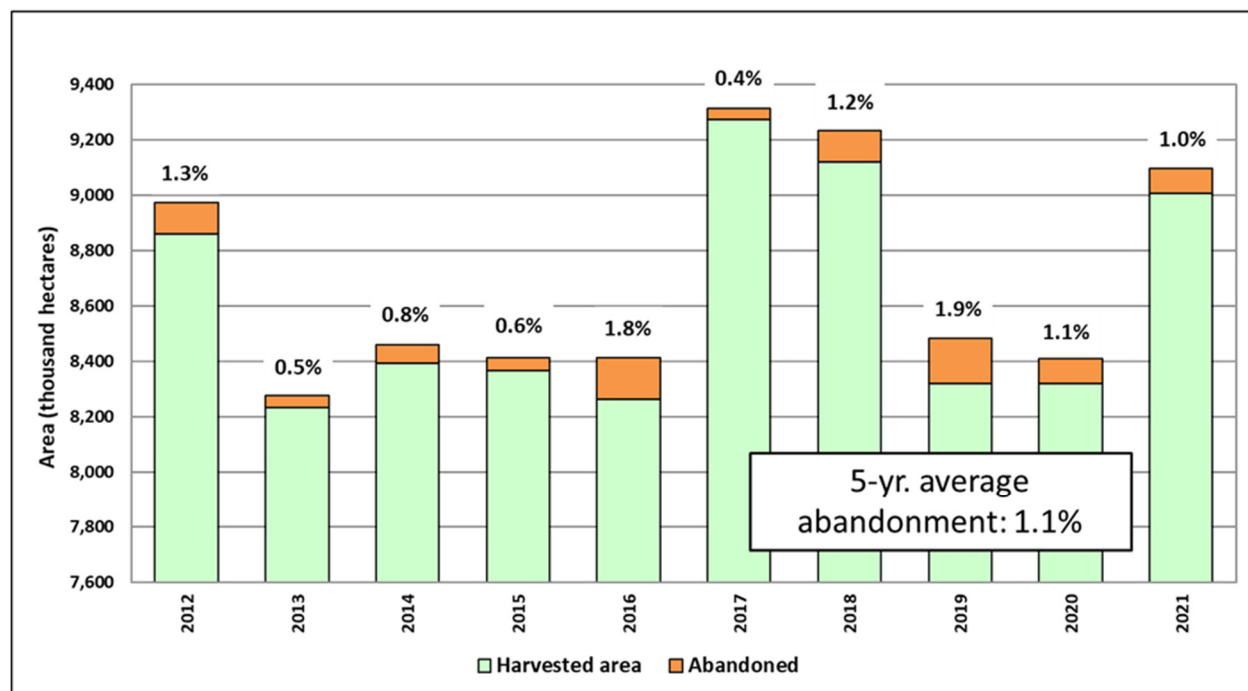


USDA Foreign Agricultural Service
U.S. DEPARTMENT OF AGRICULTURE

Sources: Statistics Canada, Estimated production by Small Area Data (SAD) Region; Agriculture and Agri-Food Canada (AAFC), Annual Crop Inventory 2018

Farmers are expected to plant 7 percent less area to rapeseed as compared to last year, according to Statistics Canada's March 2022 Field Crop Survey. Ongoing drought conditions in many parts of the Prairies, and higher input requirements and prices are reportedly incentivizing farmers towards grains, specifically, wheat and oats, over rapeseed this spring. Planting has begun and is ahead of schedule in the drought-stricken region of southern Alberta. However, planting progress remains delayed in other areas, particularly Saskatchewan and Manitoba, which have received excess precipitation and experienced cooler temperatures, and even flooding in recent weeks, throughout much of their agricultural areas.

Rapeseed Abandonment by Year



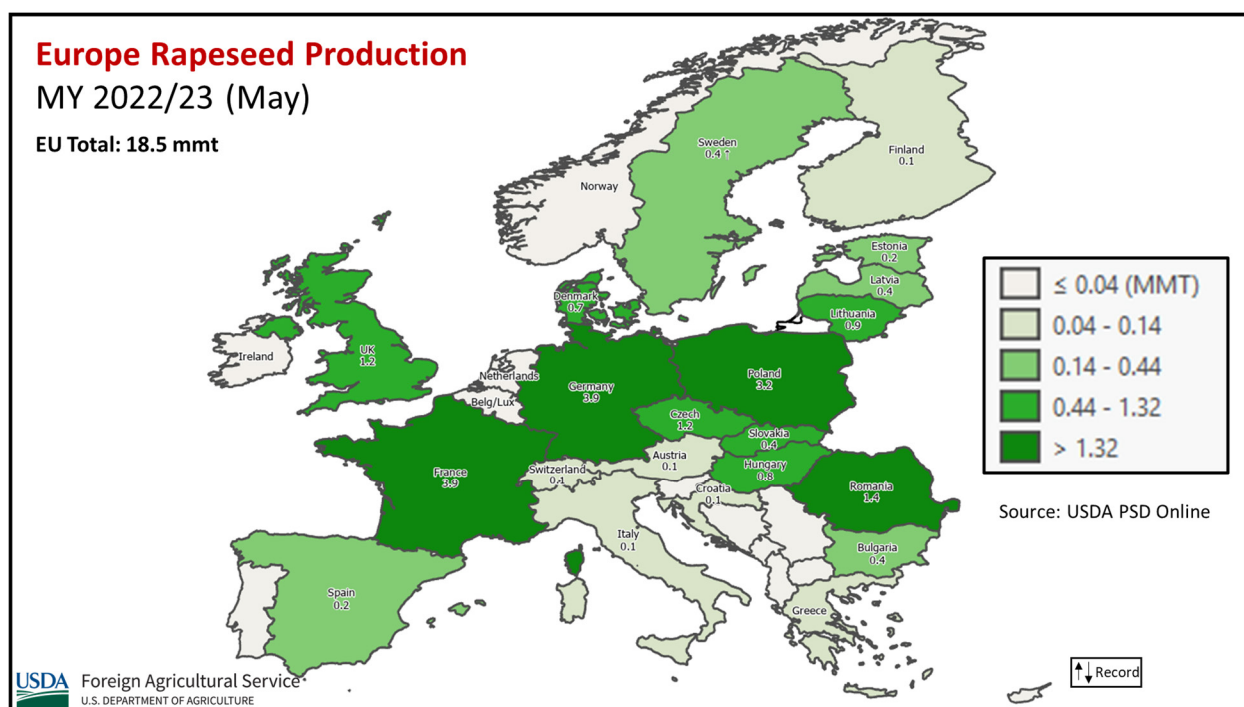
USDA Foreign Agricultural Service
U.S. DEPARTMENT OF AGRICULTURE

Source: Statistics Canada

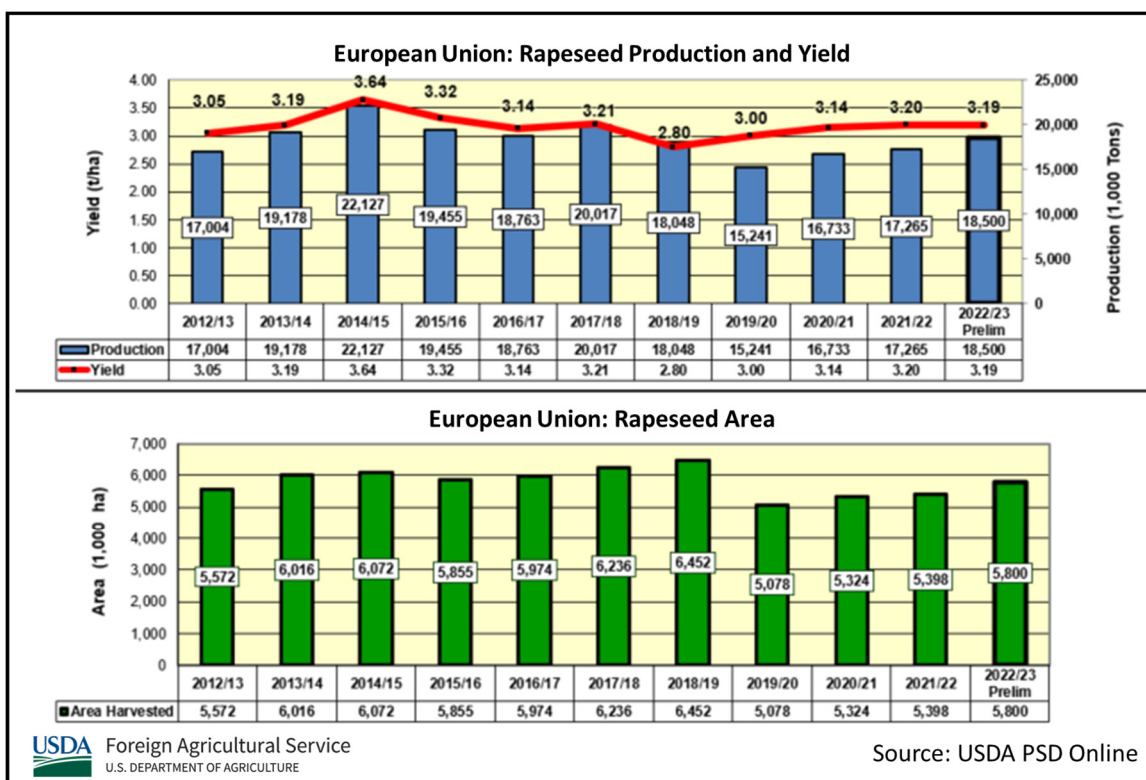
USDA adjusts its harvested area estimate to account for planted area abandonment, which is low for rapeseed, relative to other crops. Also, Canadian farmers have historically planted just over 2 percent more area, on average, than indicated in the March survey, leading to a further adjustment to the harvested area estimate. The USDA production forecast assumes a return to an average yield. (For more information, please contact Aaron.Mulhollen@usda.gov.)

EU Rapeseed: Attractive Prices Lead to Increased MY 2022/23 Area

European Union (EU) rapeseed marketing year (MY) 2022/23 production is forecast at 18.5 million metric tons (mmt), up 1.2 mmt or 7 percent from last year, and up 6 percent from the 5-year average of 17.5 mmt. Harvested area is estimated at 5.8 million hectares (mha), up 0.4 mha or 7 percent from last year and 2 percent above the 5-year average. Yield is forecast at 3.19 tons per hectare (t/ha), down slightly from last year's 3.20 t/ha, but 4 percent above the 5-year average of 3.07 t/ha.



Rapeseed continues to be the dominant oilseed in the EU. Canada and the EU are the world's largest rapeseed producers. An increase in area is largely a reaction to a rise in prices and a strong demand for both its oil and meal. Rapeseed area has been slowly increasing the last few years after a dramatic drop several years ago with the introduction of a neonicotinoids ban. Romania is excluded in 2022 from this ban.



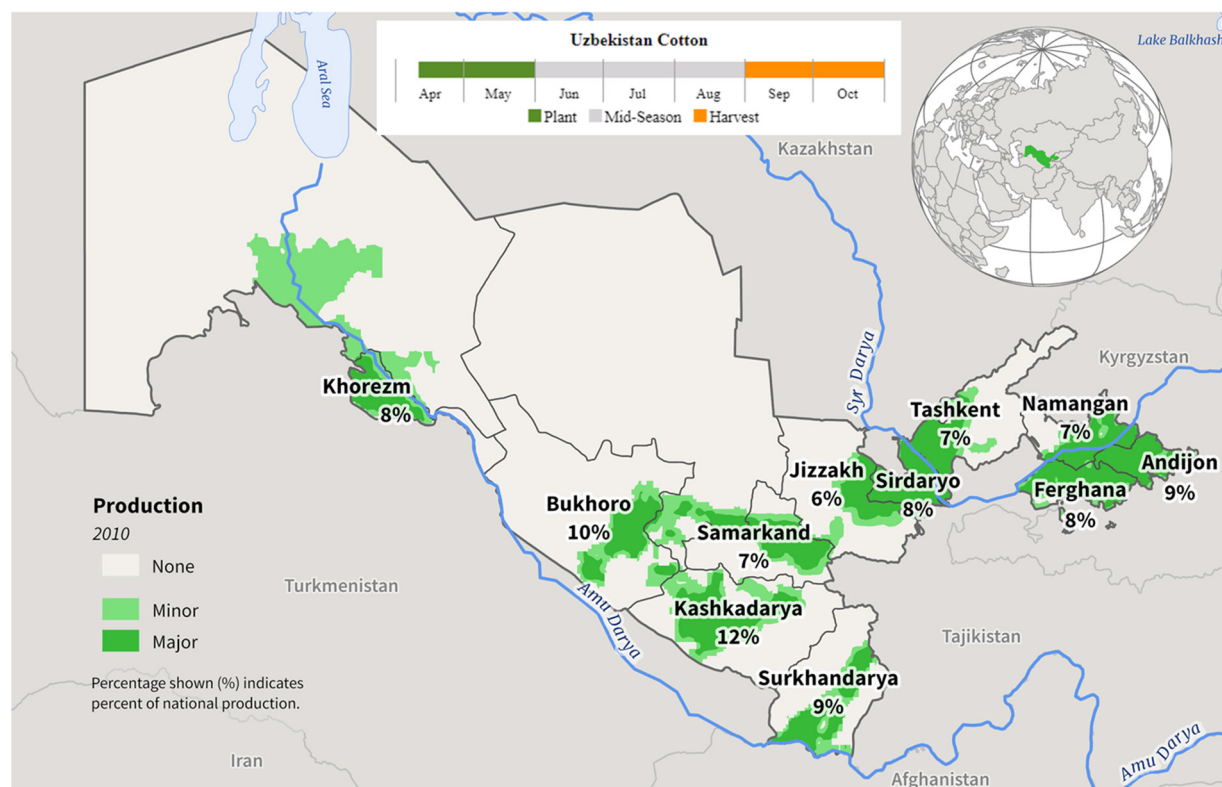
Overall conditions across the European Union have been favorable since planting of rapeseed last autumn. There was little to no winterkill and moisture has been mostly satisfactory. Recently however, dryness has increased in France, one of the EU's two biggest rapeseed producers, causing some concerns. Harvest occurs in June and July.

For country-specific area, yield, and production estimates within the European Union (EU), please go to PSD Online at <https://apps.fas.usda.gov/PSDOnline/app/index.html#/app/home>, and select "Downloadable Data Sets." Select the zipped file for "EU Countries Area & Production." (For more information, please contact Bryan.Purcell@usda.gov.)

Uzbekistan Cotton: Adequate Water Reserves Prompted Good Cotton Prospects for MY 2022/23

USDA forecasts Uzbekistan cotton production for marketing year (MY) 2022/23 at 3.0 million 480 pounds bales, up 9 percent from last year. Harvested area is forecast at 1.1 million hectares, up 1 percent from last year. Yield is forecast at 610 kilogram per hectare, up 8 percent from last year.

Uzbekistan: Cotton Production

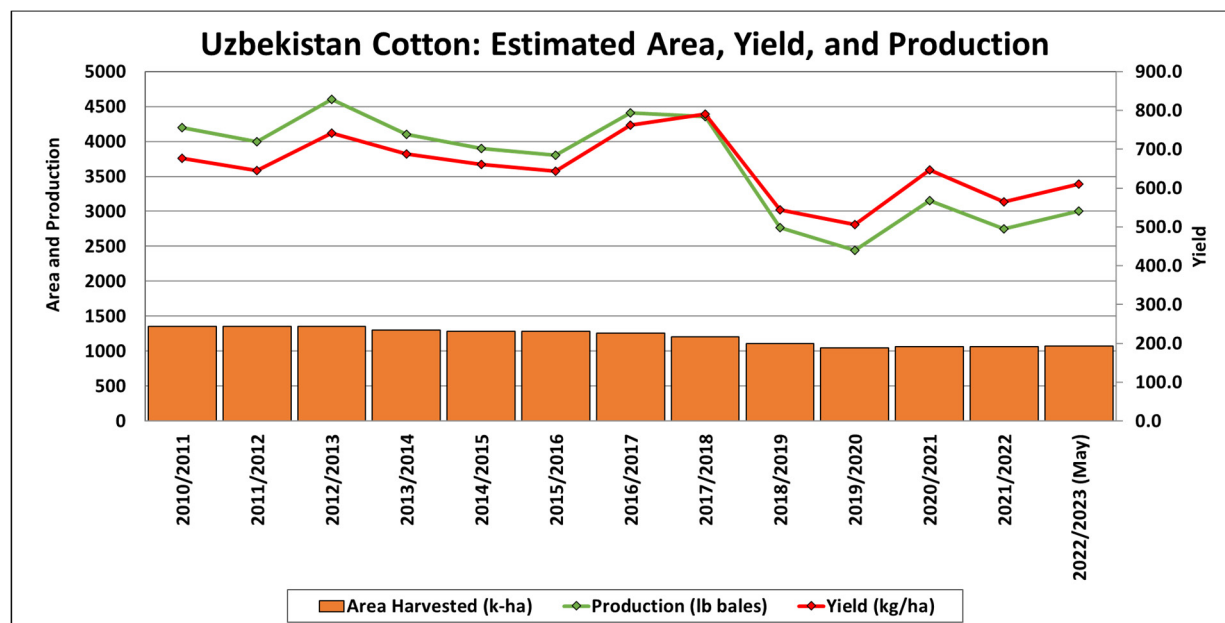


USDA Foreign Agricultural Service
U.S. DEPARTMENT OF AGRICULTURE

Source: International Food Policy Research Institute (IFPRI),
Spatial Production Allocation Model (SPAM), 2010

Despite some early concerns, the Uzbekistan croplands have received ample precipitation since early-/mid-February, boosting water availability and providing necessary moisture for planting. In addition, the near- to above-average snowpack ensures sufficient irrigation prospects for cotton.

The current favorable weather and adequate water storage reserves offer promising conditions for the new crop.



USDA Foreign Agricultural Service
U.S. DEPARTMENT OF AGRICULTURE

Source: USDA PSD Online

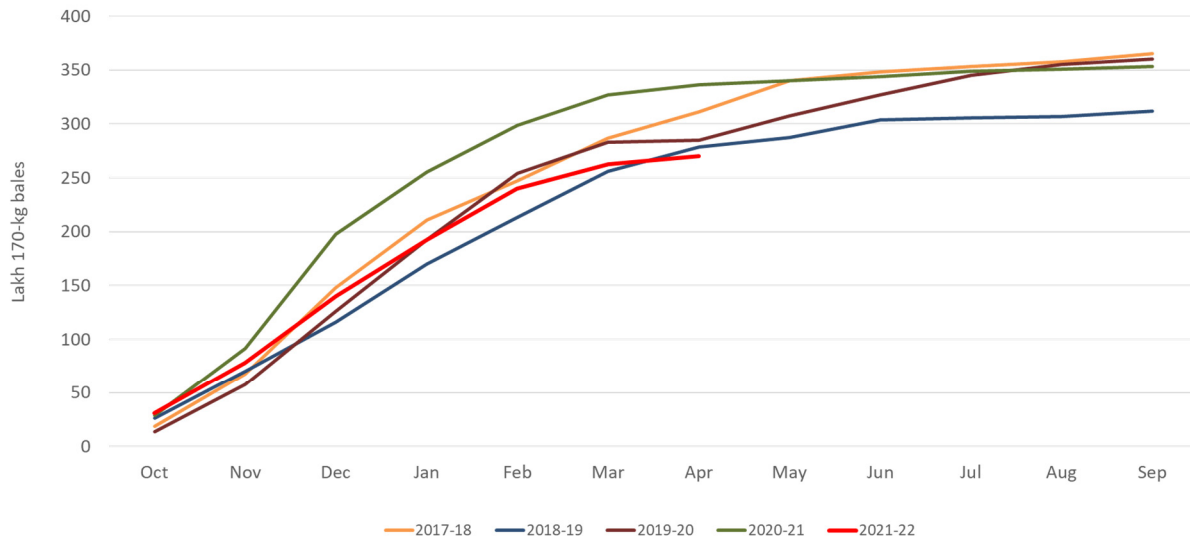
USDA has also revised its Uzbekistan cotton estimates from MY 2016/17 through MY 2021/22. This multiyear revision has been prompted by a decline in exports during recent years. The updated area and production numbers are mostly based on official government statistics published in agricultural and industrial reports prepared by the State Committee of the Republic of Uzbekistan on Statistics.

Cotton is typically planted between April and May and harvested between September and October. All of the cotton in Uzbekistan is irrigated. *(For more information, please contact Iliana.Mladenova@usda.gov.)*

India Cotton: MY 2021/22 Production Revised Down

USDA estimates cotton production for marketing year (MY) 2021/22 at 25.5 million 480-pound bales, down 4 percent from last month and 8 percent from last year. The downward revision is due to crop damage from the late withdrawal of monsoon rains and incidence of pink bollworm. Harvested area is estimated at 12.2 million hectares, unchanged from last month, but down 9 percent from last year. Yield is estimated to reach 457 kilograms per hectare, up 1 percent from last year.

2021/22 India Cotton Arrivals Lowest in 5 Years



USDA Foreign Agricultural Service
U.S. DEPARTMENT OF AGRICULTURE

Source: Cotton Association of India

A rare late September cyclone brought heavy rainfall to the southern states of Andhra Pradesh and Telangana, and the western states of Maharashtra and Gujarat. The heavy rains negatively impacted cotton bolls and harvesting. In addition, pink bollworm infestation was reported at picking in the northern states of Punjab, Haryana, and Rajasthan. The extent of the damage was initially unconfirmed until the MY 2021/22 arrival data. The Cotton Corporation of India reported for the season that cotton arrivals were down 11 percent from the 5-year average. FAS/Mumbai estimates that arrivals represent about 50 percent of production. This decrease in arrivals implies a lower MY 2021/22 production.

Cotton is grown almost entirely in the *kharif* season from May to October. Harvesting of the *kharif* crop starts in September and can continue into February. (For more information, please contact Arnella.Trent@usda.gov.)



World Agricultural Production
U.S. Department of Agriculture

Foreign Agricultural Service / Global Market Analysis
International Production Assessment Division (IPAD)

Ag Box 1051, Room 4630, South Building
Washington, DC 20250-1051

<https://ipad.fas.usda.gov/>

Telephone: (202) 720-1662 Fax: (202) 720-1158

This report uses information from the Foreign Agricultural Service's (FAS) global network of agricultural attachés and counselors, official statistics of foreign governments and other foreign source materials, and the analysis of economic data and satellite imagery. Estimates of foreign area, yield, and production are from the International Production Assessment Division, FAS, and are reviewed by USDA's Inter-Agency Commodity Estimates Committee. Estimates of U.S. area, yield, and production are from USDA's National Agricultural Statistics Service. Numbers within the report may not add to totals because of rounding. This report reflects official USDA estimates released in the World Agricultural Supply and Demand Estimates (WASDE-584), May 12, 2022.

Printed copies are available from the National Technical Information Service. Download an order form at http://www.ntis.gov/products/specialty/usda/fas_a-g.asp, or call NTIS at 1-800-363-2068.

The FAS International Production Assessment Division prepared this report. The next issue of World Agricultural Production will be released after 12:00 p.m. Eastern Time, June 10, 2022.

Conversion Table

Metric tons to bushels

| | | |
|--------------------|---|----------------|
| Wheat, soybeans | = | MT * 36.7437 |
| Corn, sorghum, rye | = | MT * 39.36825 |
| Barley | = | MT * 45.929625 |
| Oats | = | MT * 68.894438 |

Metric tons to 480-lb bales

| | | |
|--------|---|---------------|
| Cotton | = | MT * 4.592917 |
|--------|---|---------------|

Metric tons to hundredweight

| | | |
|------|---|---------------|
| Rice | = | MT * 22.04622 |
|------|---|---------------|

Area & weight

| | | |
|------------|---|-----------------|
| 1 hectare | = | 2.471044 acres |
| 1 kilogram | = | 2.204622 pounds |

For further information, contact:



**U.S. Department of Agriculture
Foreign Agricultural Service
Global Market Analysis**
International Production Assessment Division
Ag Box 1051, Room 4630, South Building
Washington, DC 20250-1051

Telephone: (202) 720-1662

Fax: (202) 720-1158

GENERAL INFORMATION

| | | | |
|---------------------------------|----------------------|--------------|----------------------------|
| Senior Director | Ronald Frantz | 202-720-4056 | ronald.frantz@usda.gov |
| Director | Robert Tetrault | 202-720-1071 | robert.tetrault@usda.gov |
| Administrative Assistant | Vacant | | |
| USDA Remote Sensing Advisor | Vacant | | |
| Sr. Analyst/Technical Lead | Curt Reynolds, Ph.D. | 202-690-0134 | curt.reynolds@usda.gov |
| Sr. Analyst/ Satellite Imagery | Dath Mita, Ph.D. | 202-720-7339 | dath.mita@usda.gov |
| Archives Manager/Technical Lead | | | |
| Sr. Analyst/Technical Lead | Jim Crutchfield | 202-690-0135 | james.crutchfield@usda.gov |
| GIS Mapping/Imagery Analyst | Lisa Colson | 202-720-6652 | lisa.colson@usda.gov |
| WAP Coordinators | Ifeoma Collins | 202-720-0240 | ifeoma.collins@usda.gov |
| | Aaron Mulhollen | 202-690-0131 | aaron.mulhollen@usda.gov |

COUNTRY- AND REGION-SPECIFIC INFORMATION

| | | | |
|--|------------------------------|--------------|--------------------------------|
| South America, Argentina, Venezuela, and Colombia | Denise McWilliams, Ph.D. | 202-720-0107 | denise.mcwilliams@usda.gov |
| Western and Central Europe, and North Africa | Bryan Purcell | 202-690-0138 | bryan.purcell@usda.gov |
| Russia, Ukraine, Kazakhstan, Moldova, and Belarus | Katie McGaughey | 202-720-9210 | katie.mcgaughey@usda.gov |
| South Asia, Sri Lanka Bangladesh, India, and Nepal | Arnella Trent | 202-720-0881 | arnella.trent@usda.gov |
| East Asia, China, and Japan | Dath Mita, Ph.D. | 202-720-7339 | dath.mita@usda.gov |
| Sub-Saharan Africa, Nigeria and South Africa | Curt Reynolds, Ph.D. | 202-690-0134 | curt.reynolds@usda.gov |
| S.E. Asia, Indonesia, Thailand, Malaysia, Cambodia and Vietnam | Justin Jenkins | 202-720-0419 | justin.jenkins@usda.gov |
| Central America, Mexico, and Western United States | Ifeoma Collins | 202-720-0240 | ifeoma.collins@usda.gov |
| Australia, New Zealand, Pakistan Papua New Guinea and South Pacific Islands | Jim Crutchfield | 202-690-0135 | james.crutchfield@usda.gov |
| Middle East, Central Asia, Afghanistan Iraq, Iran, and Syria | Iliana Mladenova, Ph.D. | 202-235-7562 | iliana.mladenova@usda.gov |
| Canada, Caribbean, Eastern United States | Aaron Mulhollen | 202-690-0131 | aaron.mulhollen@usda.gov |
| Brazil | Sunita Yadav-Pauletti, Ph.D. | | sunita.yadav-pauletti@usda.gov |



The Foreign Agricultural Service (FAS) updates its production, supply and distribution (PSD) database for cotton, oilseeds, and grains at 12:00 p.m. on the day the *World Agricultural Supply and Demand Estimates* (WASDE) report is released. This circular is released by 12:15 p.m.

FAS Reports and Databases:

World Agricultural Production

Current: <https://www.fas.usda.gov/data/world-agricultural-production>

Archive: <https://usda.library.cornell.edu/concern/publications/5q47rn72z?locale=en>

USDA's Foreign Agricultural Service (FAS) publishes a monthly report on crop acreage, yield and production in major countries worldwide. Sources include reporting from FAS's worldwide offices, official statistics of foreign governments, and analysis of economic data and satellite imagery. The reports reflect official USDA estimates released in the monthly *World Agricultural Supply and Demand Estimates* (WASDE).

World Markets and Trade

Current: <https://www.fas.usda.gov/data>

Archive:

https://usda.library.cornell.edu/catalog?f%5Bmember_of_collections_ssim%5D%5B%5D=Foreign+Agricultural+Service&locale=en

USDA's Foreign Agricultural Service (FAS) publishes monthly and quarterly reports which include data on U.S. and global trade, production, consumption and stocks, as well as analysis of developments affecting world trade in oilseeds, grains, cotton, livestock and poultry. The reports reflect official USDA estimates released in the monthly *World Agricultural Supply and Demand Estimates* (WASDE).

Global Agricultural Information Network (GAIN)

<https://www.fas.usda.gov/databases/global-agricultural-information-network-gain>

USDA's Foreign Agricultural Service (FAS) provides timely reports on foreign markets through the Global Agriculture Information Network (GAIN) database. An average of 2,000 reports are added each year, with reports going back to 1995. GAIN reports are compiled by FAS' global market intelligence network, which includes FAS foreign service officers and locally engaged staff in over 90 overseas offices world-wide. They provide on-the-ground intelligence, insight, and analysis on nearly 200 countries, delivering information on foreign agricultural markets, crop conditions, and agro-political dynamics of interest to U.S. agriculture. GAIN reports contain assessments of commodity and trade issues made by USDA staff and are not necessarily statements of official U.S. government policy.

Production, Supply and Distribution (PS&D) Online

<https://apps.fas.usda.gov/psdonline/app/index.html#/app/home>

PSD Online is the public repository for USDA's Official Production, Supply and Distribution forecast data and reports for key agricultural commodities. PSD Online data are reviewed and updated monthly by an interagency committee chaired by USDA's World Agricultural Outlook Board (WAOB). The committee consist of representatives from Foreign Agricultural Service (FAS), the Economic Research Service (ERS), the Farm Service Agency (FSA), and the Agricultural Marketing Service (AMS).

EU Countries and Russia Wheat: Area and Production Estimates

<https://apps.fas.usda.gov/psdonline/app/index.html#/app/downloads> (click on PSD Datasets)

USDA's Foreign Agricultural Service (FAS) provides country-level area and production estimates for the nations of the European Union. For Russia, country-level area and production estimates are provided for Winter and Spring wheat. These datasets are reviewed and updated monthly by an interagency committee chaired by USDA's World Agricultural Outlook Board (WAOB) and can be downloaded through PSD datasets on PSD Online.



FAS Reports and Databases:

International Production Assessment (IPAD)

<https://ipad.fas.usda.gov/>

USDA's Foreign Agricultural Service (FAS) maintains a dynamic global crop production portal with key information including *World Agricultural Production* (WAP) briefs, Commodity Intelligence Reports (CIR), geospatial applications, crop production maps at a subnational level and crop calendars for the top-20 producing countries. Additionally, Crop Explorer (<https://ipad.fas.usda.gov/cropeexplorer/>) displays rainfall, temperature, evapotranspiration, soil moisture, snow cover, and vegetation conditions in charts and maps.

USDA and NASA Global Agricultural Monitoring (GLAM)

<https://glam1.gsfc.nasa.gov/>

The USDA and NASA Global Agricultural Monitoring (GLAM) system provides near real-time and science quality Moderate Resolution Imaging Spectroradiometer (MODIS) Normalized Difference Vegetation Index (NDVI) from the satellites Terra and Aqua. The public can view and retrieve MODIS 8-day composited, global NDVI satellite imagery and time series data. GLAM was developed by NASA's Global Inventory Modeling and Mapping Studies (GIMMS) group for USDA's Foreign Agricultural Service.

Global Agricultural and Disaster Assessment System (GADAS)

<https://geo.fas.usda.gov/GADAS/index.html>

USDA's Foreign Agricultural Service (FAS) provides the Global Agricultural and Disaster Assessment System (GADAS), a web-based Geographic Information System (GIS) tool which integrates a vast array of highly detailed earth observation data streams, particularly targeted towards agricultural and disaster assessment analysis. GADAS is an interactive website which provides analysts with a wide variety of routine geospatial products (maps, charts, tables) they require for comprehensive situational investigations and recurring assessments.

Export Sales Reporting

<https://apps.fas.usda.gov/esrquery/>

USDA's Export Sales Reporting Program monitors U.S. agricultural export sales on a daily and weekly basis. Export sales reporting provides a constant stream of up-to-date market information for 40 U.S. agricultural commodities sold abroad. The weekly U.S. Export Sales report is the most currently available source of U.S. exports sales data. The data is used to analyze overall levels of export demand, determine where markets exit, and assess the relative position of U.S. commodities in foreign markets.

Global Agricultural Trade System (GATS)

<https://apps.fas.usda.gov/gats/default.aspx>

The Global Agricultural Trade System (GATS) is a searchable database containing monthly U.S. Census Bureau trade data organized by agricultural commodity and agricultural related product groups. Trade data is searchable by partner countries and partner groups. Historical U.S. agricultural trade data is available back to 1967. In addition, U.N. trade statistics (UN Comtrade) may be queried through GATS. UN trade data is available for nearly 200 countries or areas, dating from the inception of the Harmonized System (HS) of trade codes in 1989 to present. The database is continuously updated. U.S. trade data is updated monthly according to the U.S. Census Bureau's reporting system. UN Comtrade data are updated in GATS after nationally submitted data to the UN are standardized by the UN Statistical Division and added to the UN Comtrade database.

Other USDA Reports:

World Agricultural Supply and Demand Estimates (WASDE):

<http://www.usda.gov/oce/commodity/wasde/>

Economic Research Service:

<http://www.ers.usda.gov/topics/crops>

National Agricultural Statistics Service:

<http://www.nass.usda.gov/Publications/>

Table 01 World Crop Production Summary

Million Metric Tons

| Commodity | World - | Total Foreign | North America | | | Former Soviet | | Europea n | Asia (WAP) | | | | | South America | | Selected Other | | | All Others | |
|----------------------|---------------------------|------------------|------------------|-------------|-------------|------------------|--------------|--------------|---------------|------------|----------------|---------------|---------------|------------------|-------------|-------------------|-----------------|-------------|---------------|--|
| | | | United States | Canada - | Mexico - | Russia - | Ukraine - | | China - | India - | Indo- nesia | Paki- stan | Thai- land | Argen- tina | Brazil - | Aus- tralia | South Africa | Turkey - | | |
| | ---Million metric tons--- | | | | | | | | | | | | | | | | | | | |
| Wheat | | | | | | | | | | | | | | | | | | | | |
| 2020/21 | 775.7 | 726.0 | 49.8 | 35.2 | 3.0 | 85.4 | 25.4 | nr | 134.3 | 107.9 | 0.0 | 25.2 | 0.0 | 17.6 | 6.3 | 33.3 | 2.1 | 18.3 | 232.1 | |
| 2021/22 prel. | 779.3 | 734.5 | 44.8 | 21.7 | 3.3 | 75.2 | 33.0 | nr | 136.9 | 109.6 | 0.0 | 27.5 | 0.0 | 22.2 | 7.7 | 36.3 | 2.3 | 16.0 | 243.0 | |
| 2022/23 proj. May | 774.8 | 727.8 | 47.1 | 33.0 | 3.3 | 80.0 | 21.5 | nr | 135.0 | 108.5 | 0.0 | 26.4 | 0.0 | 20.0 | 8.5 | 30.0 | 2.3 | 17.5 | 241.8 | |
| Coarse Grains | | | | | | | | | | | | | | | | | | | | |
| 2020/21 | 1,439.1 | 1,066.2 | 372.9 | 29.6 | 32.7 | 41.4 | 39.6 | nr | 269.1 | 51.4 | 12.6 | 9.3 | 5.7 | 60.0 | 90.3 | 17.1 | 17.8 | 15.8 | 373.9 | |
| 2021/22 prel. | 1,501.4 | 1,102.7 | 398.7 | 24.2 | 33.4 | 38.5 | 53.5 | nr | 280.9 | 50.1 | 12.7 | 10.0 | 5.4 | 62.9 | 120.6 | 18.4 | 16.9 | 11.6 | 363.8 | |
| 2022/23 proj. May | 1,475.9 | 1,093.8 | 382.1 | 29.8 | 33.5 | 41.9 | 26.6 | nr | 279.3 | 50.1 | 12.9 | 9.4 | 5.5 | 64.9 | 130.5 | 15.0 | 17.9 | 13.6 | 362.8 | |
| Rice, Milled | | | | | | | | | | | | | | | | | | | | |
| 2020/21 | 509.3 | 502.1 | 7.2 | 0.0 | 0.2 | 0.7 | 0.0 | nr | 148.3 | 124.4 | 34.5 | 8.4 | 18.9 | 0.8 | 8.0 | 0.3 | 0.0 | 0.6 | 156.9 | |
| 2021/22 prel. | 512.9 | 506.8 | 6.1 | 0.0 | 0.2 | 0.7 | 0.0 | nr | 149.0 | 129.0 | 34.4 | 8.7 | 19.7 | 0.8 | 7.1 | 0.5 | 0.0 | 0.5 | 156.2 | |
| 2022/23 proj. May | 514.6 | 508.8 | 5.8 | 0.0 | 0.2 | 0.6 | 0.0 | nr | 149.0 | 130.0 | 34.6 | 8.9 | 19.8 | 0.8 | 7.1 | 0.6 | 0.0 | 0.6 | 156.7 | |
| Total Grains | | | | | | | | | | | | | | | | | | | | |
| 2020/21 | 2,724.1 | 2,294.3 | 429.9 | 64.8 | 35.8 | 127.5 | 65.0 | nr | 551.6 | 283.6 | 47.1 | 43.0 | 24.5 | 78.5 | 104.6 | 50.7 | 19.9 | 34.6 | 762.9 | |
| 2021/22 prel. | 2,793.6 | 2,344.0 | 449.6 | 45.9 | 36.8 | 114.4 | 86.6 | nr | 566.8 | 288.6 | 47.1 | 46.2 | 25.0 | 85.8 | 135.5 | 55.2 | 19.1 | 28.1 | 762.9 | |
| 2022/23 proj. May | 2,765.3 | 2,330.4 | 435.0 | 62.8 | 37.0 | 122.5 | 48.1 | nr | 563.3 | 288.6 | 47.5 | 44.7 | 25.3 | 85.8 | 146.1 | 45.6 | 20.2 | 31.7 | 761.3 | |
| Oilseeds | | | | | | | | | | | | | | | | | | | | |
| 2020/21 | 606.6 | 482.1 | 124.5 | 25.9 | 0.7 | 20.1 | 19.9 | nr | 65.6 | 38.3 | 14.6 | 2.7 | 1.0 | 51.2 | 143.9 | 5.4 | 2.7 | 2.9 | 87.2 | |
| 2021/22 prel. | 596.9 | 466.3 | 130.5 | 19.0 | 0.9 | 23.1 | 24.3 | nr | 62.1 | 41.3 | 15.1 | 3.3 | 1.0 | 47.0 | 130.3 | 8.1 | 3.0 | 3.4 | 84.6 | |
| 2022/23 proj. May | 647.1 | 510.5 | 136.6 | 26.4 | 0.9 | 22.6 | 16.5 | nr | 64.1 | 42.2 | 15.2 | 3.4 | 1.0 | 56.8 | 154.3 | 6.4 | 3.2 | 3.7 | 93.8 | |
| Cotton | | | | | | | | | | | | | | | | | | | | |
| 2020/21 | 111.5 | 96.9 | 14.6 | 0.0 | 1.0 | 0.0 | 0.0 | 1.7 | 29.5 | 27.6 | 0.0 | 4.5 | 0.0 | 1.4 | 10.8 | 2.8 | 0.1 | 2.9 | 14.6 | |
| 2021/22 prel. | 118.4 | 100.9 | 17.5 | 0.0 | 1.2 | 0.0 | 0.0 | 1.6 | 27.0 | 25.5 | 0.0 | 6.0 | 0.0 | 1.5 | 13.2 | 5.5 | 0.1 | 3.8 | 15.5 | |
| 2022/23 proj. May | 121.1 | 104.6 | 16.5 | 0.0 | 1.3 | 0.0 | 0.0 | 1.6 | 27.5 | 27.5 | 0.0 | 6.2 | 0.0 | 1.4 | 13.2 | 5.5 | 0.1 | 4.3 | 16.0 | |

1/ Includes wheat, coarse grains, and rice (milled) shown above.

Table 02 Wheat Area, Yield, and Production

| Country / Region | Area (Million hectares) | | | Yield (Metric tons per hectare) | | | Production (Million metric tons) | | | Change in Production | | | |
|---------------------------------|----------------------------|------------------|----------------------|------------------------------------|------------------|----------------------|-------------------------------------|------------------|----------------------|------------------------|---------|-----------------------|---------|
| | 2020/21 | Prel. 2021/22 | 2022/23 Proj. May | 2020/21 | Prel. 2021/22 | 2022/23 Proj. May | 2020/21 | Prel. 2021/22 | 2022/23 Proj. May | From last month MMT | Percent | From last year MMT | Percent |
| World | 220.84 | 222.27 | 220.85 | 3.51 | 3.51 | 3.51 | 775.72 | 779.29 | 774.83 | | | -4.46 | -0.57 |
| United States | 14.89 | 15.04 | 15.00 | 3.34 | 2.98 | 3.14 | 49.75 | 44.79 | 47.05 | | | 2.26 | 5.05 |
| Total Foreign | 205.95 | 207.23 | 205.85 | 3.52 | 3.54 | 3.54 | 725.97 | 734.50 | 727.78 | | | -6.72 | -0.91 |
| European Union | 22.98 | 24.23 | 24.10 | 5.51 | 5.71 | 5.66 | 126.69 | 138.42 | 136.50 | | | -1.92 | -1.39 |
| United Kingdom | 1.39 | 1.79 | 1.80 | 6.96 | 7.81 | 8.00 | 9.66 | 13.99 | 14.40 | | | 0.41 | 2.95 |
| Serbia | 0.59 | 0.60 | 0.63 | 4.58 | 5.00 | 4.60 | 2.70 | 3.00 | 2.90 | | | -0.10 | -3.33 |
| China | 23.38 | 23.57 | 23.40 | 5.74 | 5.81 | 5.77 | 134.25 | 136.95 | 135.00 | | | -1.95 | -1.42 |
| South Asia | | | | | | | | | | | | | |
| India | 31.36 | 31.13 | 31.00 | 3.44 | 3.52 | 3.50 | 107.86 | 109.59 | 108.50 | | | -1.09 | -0.99 |
| Pakistan | 8.81 | 9.17 | 9.00 | 2.87 | 3.00 | 2.93 | 25.25 | 27.46 | 26.40 | | | -1.06 | -3.87 |
| Afghanistan | 2.33 | 2.20 | 2.20 | 2.15 | 2.00 | 2.05 | 5.01 | 4.40 | 4.50 | | | 0.10 | 2.27 |
| Nepal | 0.75 | 0.75 | 0.75 | 2.95 | 2.80 | 2.80 | 2.21 | 2.10 | 2.10 | | | 0.00 | 0.00 |
| Former Soviet Union - 12 | | | | | | | | | | | | | |
| Russia | 28.68 | 27.63 | 27.50 | 2.98 | 2.72 | 2.91 | 85.35 | 75.16 | 80.00 | | | 4.84 | 6.44 |
| Russia Winter | 16.63 | 15.22 | 15.60 | 3.77 | 3.43 | 3.75 | 62.69 | 52.19 | 58.50 | | | 6.31 | 12.08 |
| Russia Spring | 12.06 | 12.41 | 11.90 | 1.88 | 1.85 | 1.81 | 22.66 | 22.96 | 21.50 | | | -1.46 | -6.38 |
| Ukraine | 6.85 | 7.41 | 5.85 | 3.71 | 4.45 | 3.68 | 25.42 | 33.01 | 21.50 | | | -11.51 | -34.86 |
| Kazakhstan | 12.06 | 12.72 | 12.50 | 1.18 | 0.93 | 1.04 | 14.26 | 11.81 | 13.00 | | | 1.19 | 10.04 |
| Uzbekistan | 1.36 | 1.36 | 1.40 | 4.53 | 4.43 | 4.43 | 6.16 | 6.03 | 6.20 | | | 0.17 | 2.87 |
| Belarus | 0.72 | 0.65 | 0.68 | 3.94 | 3.54 | 3.48 | 2.85 | 2.30 | 2.35 | | | 0.05 | 2.17 |
| Canada | 10.02 | 9.25 | 9.70 | 3.51 | 2.34 | 3.40 | 35.18 | 21.65 | 33.00 | | | 11.35 | 52.41 |
| South America | | | | | | | | | | | | | |
| Argentina | 6.40 | 6.55 | 6.30 | 2.76 | 3.38 | 3.17 | 17.64 | 22.15 | 20.00 | | | -2.15 | -9.71 |
| Brazil | 2.34 | 2.74 | 3.20 | 2.67 | 2.81 | 2.66 | 6.25 | 7.70 | 8.50 | | | 0.80 | 10.39 |
| Australia | 12.90 | 13.00 | 12.90 | 2.58 | 2.79 | 2.33 | 33.30 | 36.30 | 30.00 | | | -6.30 | -17.36 |
| Africa | | | | | | | | | | | | | |
| Egypt | 1.39 | 1.40 | 1.53 | 6.40 | 6.43 | 6.41 | 8.90 | 9.00 | 9.80 | | | 0.80 | 8.89 |
| Morocco | 2.76 | 2.86 | 2.50 | 0.93 | 2.64 | 0.90 | 2.56 | 7.54 | 2.25 | | | -5.29 | -70.16 |
| Algeria | 2.08 | 2.08 | 2.08 | 1.50 | 1.20 | 1.78 | 3.11 | 2.50 | 3.70 | | | 1.20 | 48.00 |
| Ethiopia | 1.83 | 1.95 | 2.00 | 3.00 | 2.83 | 2.85 | 5.48 | 5.52 | 5.70 | | | 0.18 | 3.26 |
| Middle East | | | | | | | | | | | | | |
| Turkey | 7.10 | 7.05 | 7.00 | 2.57 | 2.27 | 2.50 | 18.25 | 16.00 | 17.50 | | | 1.50 | 9.38 |
| Iran | 6.00 | 6.00 | 6.20 | 2.50 | 2.00 | 2.13 | 15.00 | 12.00 | 13.20 | | | 1.20 | 10.00 |
| Iraq | 2.40 | 2.00 | 2.00 | 1.93 | 1.75 | 1.50 | 4.64 | 3.50 | 3.00 | | | -0.50 | -14.29 |
| Syria | 1.60 | 1.10 | 1.30 | 2.81 | 1.82 | 1.92 | 4.50 | 2.00 | 2.50 | | | 0.50 | 25.00 |
| Mexico | 0.56 | 0.55 | 0.59 | 5.33 | 6.00 | 5.59 | 2.97 | 3.28 | 3.27 | | | -0.01 | -0.34 |
| Others | 7.35 | 7.51 | 7.76 | 2.79 | 2.81 | 2.84 | 20.53 | 21.15 | 22.01 | | | 0.86 | 4.08 |

Table 03 Total Coarse Grain Area, Yield, and Production

| Country / Region | Area (Million hectares) | | | Yield (Metric tons per hectare) | | | Production (Million metric tons) | | | Change in Production | | | |
|---------------------------------|----------------------------|------------------|----------------------|------------------------------------|------------------|----------------------|-------------------------------------|------------------|----------------------|------------------------|---------|-----------------------|---------|
| | 2020/21 | Prel. 2021/22 | 2022/23 Proj. May | 2020/21 | Prel. 2021/22 | 2022/23 Proj. May | 2020/21 | Prel. 2021/22 | 2022/23 Proj. May | From last month MMT | Percent | From last year MMT | Percent |
| World | 343.65 | 344.99 | 340.66 | 4.19 | 4.35 | 4.33 | 1,439.10 | 1,501.42 | 1,475.87 | | | -25.55 | -1.70 |
| United States | 36.81 | 38.35 | 36.78 | 10.13 | 10.40 | 10.39 | 372.89 | 398.71 | 382.10 | | | -16.60 | -4.16 |
| Total Foreign | 306.84 | 306.64 | 303.88 | 3.47 | 3.60 | 3.60 | 1,066.21 | 1,102.71 | 1,093.77 | | | -8.95 | -0.81 |
| China | 43.72 | 45.77 | 45.45 | 6.15 | 6.14 | 6.15 | 269.08 | 280.85 | 279.30 | | | -1.55 | -0.55 |
| European Union | 28.76 | 27.80 | 27.71 | 5.40 | 5.54 | 5.47 | 155.35 | 154.08 | 151.62 | | | -2.46 | -1.60 |
| United Kingdom | 1.66 | 1.43 | 1.37 | 5.64 | 5.88 | 5.95 | 9.36 | 8.41 | 8.15 | | | -0.26 | -3.10 |
| South America | | | | | | | | | | | | | |
| Brazil | 21.30 | 23.37 | 24.31 | 4.24 | 5.16 | 5.37 | 90.32 | 120.62 | 130.54 | | | 9.92 | 8.22 |
| Argentina | 8.64 | 9.67 | 9.61 | 6.94 | 6.50 | 6.76 | 60.00 | 62.89 | 64.92 | | | 2.04 | 3.24 |
| Former Soviet Union - 12 | | | | | | | | | | | | | |
| Russia | 14.55 | 14.01 | 14.38 | 2.84 | 2.75 | 2.92 | 41.40 | 38.54 | 41.93 | | | 3.39 | 8.79 |
| Ukraine | 8.53 | 8.66 | 5.97 | 4.64 | 6.18 | 4.45 | 39.59 | 53.51 | 26.56 | | | -26.95 | -50.37 |
| Kazakhstan | 3.20 | 2.63 | 2.70 | 1.54 | 1.43 | 1.58 | 4.93 | 3.76 | 4.25 | | | 0.49 | 13.05 |
| Belarus | 1.14 | 0.99 | 1.03 | 3.47 | 3.05 | 3.11 | 3.95 | 3.00 | 3.20 | | | 0.20 | 6.67 |
| Africa | | | | | | | | | | | | | |
| Nigeria | 13.10 | 13.70 | 13.95 | 1.60 | 1.56 | 1.54 | 20.90 | 21.39 | 21.50 | | | 0.11 | 0.50 |
| South Africa | 3.36 | 3.19 | 3.30 | 5.31 | 5.29 | 5.43 | 17.81 | 16.85 | 17.90 | | | 1.05 | 6.22 |
| Tanzania | 5.17 | 5.40 | 5.00 | 1.51 | 1.49 | 1.40 | 7.79 | 8.05 | 6.98 | | | -1.08 | -13.35 |
| Burkina Faso | 4.18 | 4.24 | 4.24 | 1.13 | 0.99 | 1.16 | 4.72 | 4.20 | 4.90 | | | 0.70 | 16.58 |
| Ethiopia | 5.53 | 5.59 | 5.63 | 3.45 | 3.08 | 3.23 | 19.10 | 17.20 | 18.20 | | | 1.00 | 5.81 |
| Egypt | 1.03 | 1.16 | 1.16 | 7.01 | 7.13 | 7.13 | 7.24 | 8.30 | 8.30 | | | 0.00 | 0.00 |
| Mali | 5.17 | 4.70 | 4.70 | 1.41 | 1.34 | 1.38 | 7.26 | 6.31 | 6.50 | | | 0.19 | 2.95 |
| India | 24.12 | 24.09 | 23.91 | 2.13 | 2.08 | 2.10 | 51.39 | 50.06 | 50.10 | | | 0.04 | 0.09 |
| Southeast Asia | | | | | | | | | | | | | |
| Indonesia | 3.85 | 3.90 | 3.95 | 3.27 | 3.26 | 3.27 | 12.60 | 12.70 | 12.90 | | | 0.20 | 1.57 |
| Philippines | 2.57 | 2.50 | 2.65 | 3.25 | 3.28 | 3.13 | 8.35 | 8.20 | 8.30 | | | 0.10 | 1.22 |
| Vietnam | 0.99 | 0.99 | 0.97 | 4.80 | 4.86 | 4.85 | 4.74 | 4.80 | 4.70 | | | -0.10 | -2.04 |
| Thailand | 1.28 | 1.23 | 1.25 | 4.41 | 4.36 | 4.37 | 5.65 | 5.35 | 5.45 | | | 0.10 | 1.87 |
| Mexico | 8.76 | 9.01 | 9.01 | 3.73 | 3.70 | 3.72 | 32.66 | 33.35 | 33.50 | | | 0.15 | 0.43 |
| Canada | 5.80 | 5.74 | 5.74 | 5.11 | 4.22 | 5.20 | 29.64 | 24.21 | 29.81 | | | 5.59 | 23.09 |
| Australia | 6.12 | 5.96 | 5.89 | 2.79 | 3.09 | 2.55 | 17.09 | 18.40 | 15.02 | | | -3.38 | -18.37 |
| Middle East | | | | | | | | | | | | | |
| Turkey | 4.63 | 4.46 | 4.54 | 3.40 | 2.60 | 2.99 | 15.76 | 11.58 | 13.57 | | | 1.99 | 17.18 |
| Iran | 1.81 | 1.91 | 1.86 | 2.77 | 2.16 | 2.38 | 5.02 | 4.12 | 4.42 | | | 0.30 | 7.31 |
| Others | 77.89 | 74.56 | 73.65 | 1.60 | 1.64 | 1.65 | 124.53 | 121.99 | 121.28 | | | -0.70 | -0.58 |

World and Selected Countries and Regions; Coarse Grain includes: Barley, Corn, Millet, Mixed Grains, Oats, Rye and Sorghum

Table 04 Corn Area, Yield, and Production

| Country / Region | Area (Million hectares) | | | Yield (Metric tons per hectare) | | | Production (Million metric tons) | | | Change in Production | | | |
|---------------------------------|----------------------------|------------------|----------------------|------------------------------------|------------------|----------------------|-------------------------------------|------------------|----------------------|----------------------|---------|----------------|---------|
| | 2020/21 | Prel. 2021/22 | 2022/23 Proj. May | 2020/21 | Prel. 2021/22 | 2022/23 Proj. May | 2020/21 | Prel. 2021/22 | 2022/23 Proj. May | From last month | | From last year | |
| | | | | | | | | | | MMT | Percent | MMT | Percent |
| World | 199.11 | 206.26 | 202.67 | 5.67 | 5.89 | 5.83 | 1,129.00 | 1,215.62 | 1,180.72 | | | -34.90 | -2.87 |
| United States | 33.31 | 34.56 | 33.06 | 10.76 | 11.11 | 11.11 | 358.45 | 383.94 | 367.30 | | | -16.64 | -4.33 |
| Total Foreign | 165.80 | 171.70 | 169.61 | 4.65 | 4.84 | 4.80 | 770.55 | 831.67 | 813.41 | | | -18.26 | -2.20 |
| China | 41.26 | 43.32 | 43.00 | 6.32 | 6.29 | 6.30 | 260.67 | 272.55 | 271.00 | | | -1.55 | -0.57 |
| South America | | | | | | | | | | | | | |
| Brazil | 19.90 | 21.80 | 22.70 | 4.37 | 5.32 | 5.55 | 87.00 | 116.00 | 126.00 | | | 10.00 | 8.62 |
| Argentina | 6.55 | 7.00 | 7.00 | 7.94 | 7.57 | 7.86 | 52.00 | 53.00 | 55.00 | | | 2.00 | 3.77 |
| Bolivia | 0.47 | 0.48 | 0.48 | 2.30 | 2.32 | 2.32 | 1.08 | 1.10 | 1.10 | | | 0.00 | 0.00 |
| European Union | 9.21 | 9.21 | 9.07 | 7.29 | 7.65 | 7.53 | 67.14 | 70.50 | 68.25 | | | -2.25 | -3.19 |
| Africa | | | | | | | | | | | | | |
| South Africa | 3.12 | 3.00 | 3.10 | 5.44 | 5.43 | 5.58 | 16.95 | 16.30 | 17.30 | | | 1.00 | 6.13 |
| Nigeria | 5.50 | 6.00 | 6.25 | 2.25 | 2.12 | 2.00 | 12.40 | 12.75 | 12.50 | | | -0.25 | -1.92 |
| Ethiopia | 2.36 | 2.53 | 2.55 | 4.47 | 3.72 | 4.00 | 10.56 | 9.40 | 10.20 | | | 0.80 | 8.51 |
| Egypt | 0.80 | 0.93 | 0.93 | 8.00 | 8.00 | 8.00 | 6.40 | 7.44 | 7.44 | | | 0.00 | 0.00 |
| Tanzania | 4.20 | 4.40 | 4.00 | 1.60 | 1.59 | 1.48 | 6.71 | 7.00 | 5.90 | | | -1.10 | -15.71 |
| Malawi | 1.76 | 1.70 | 1.70 | 2.10 | 2.47 | 1.76 | 3.69 | 4.20 | 3.00 | | | -1.20 | -28.57 |
| Zambia | 1.33 | 1.30 | 1.30 | 2.54 | 2.78 | 2.31 | 3.39 | 3.62 | 3.00 | | | -0.62 | -17.13 |
| Kenya | 2.19 | 1.95 | 1.90 | 1.73 | 1.59 | 1.68 | 3.79 | 3.10 | 3.20 | | | 0.10 | 3.23 |
| Uganda | 0.99 | 1.10 | 1.10 | 2.78 | 2.55 | 2.55 | 2.75 | 2.80 | 2.80 | | | 0.00 | 0.00 |
| Zimbabwe | 1.58 | 1.95 | 1.60 | 0.57 | 1.39 | 1.00 | 0.91 | 2.72 | 1.60 | | | -1.12 | -41.11 |
| Former Soviet Union - 12 | | | | | | | | | | | | | |
| Ukraine | 5.40 | 5.49 | 3.50 | 5.62 | 7.68 | 5.57 | 30.30 | 42.13 | 19.50 | | | -22.63 | -53.71 |
| Russia | 2.73 | 2.90 | 2.90 | 5.08 | 5.25 | 5.34 | 13.87 | 15.23 | 15.50 | | | 0.28 | 1.81 |
| South Asia | | | | | | | | | | | | | |
| India | 9.89 | 9.90 | 9.80 | 3.20 | 3.28 | 3.21 | 31.65 | 32.50 | 31.50 | | | -1.00 | -3.08 |
| Pakistan | 1.42 | 1.50 | 1.50 | 6.30 | 6.33 | 5.93 | 8.94 | 9.50 | 8.90 | | | -0.60 | -6.32 |
| Nepal | 0.97 | 0.97 | 0.97 | 2.82 | 2.82 | 2.82 | 2.72 | 2.72 | 2.72 | | | 0.00 | 0.00 |
| Southeast Asia | | | | | | | | | | | | | |
| Indonesia | 3.85 | 3.90 | 3.95 | 3.27 | 3.26 | 3.27 | 12.60 | 12.70 | 12.90 | | | 0.20 | 1.57 |
| Philippines | 2.57 | 2.50 | 2.65 | 3.25 | 3.28 | 3.13 | 8.35 | 8.20 | 8.30 | | | 0.10 | 1.22 |
| Vietnam | 0.99 | 0.99 | 0.97 | 4.80 | 4.86 | 4.85 | 4.74 | 4.80 | 4.70 | | | -0.10 | -2.04 |
| Thailand | 1.26 | 1.20 | 1.22 | 4.46 | 4.42 | 4.43 | 5.60 | 5.30 | 5.40 | | | 0.10 | 1.89 |
| Mexico | 7.14 | 7.20 | 7.20 | 3.83 | 3.83 | 3.83 | 27.35 | 27.60 | 27.60 | | | 0.00 | 0.00 |
| Canada | 1.41 | 1.39 | 1.40 | 9.63 | 10.05 | 10.00 | 13.56 | 13.98 | 14.00 | | | 0.02 | 0.11 |
| Turkey | 0.62 | 0.54 | 0.52 | 11.45 | 12.04 | 11.54 | 7.10 | 6.50 | 6.00 | | | -0.50 | -7.69 |
| Others | 26.32 | 26.56 | 26.37 | 2.60 | 2.56 | 2.58 | 68.35 | 68.05 | 68.10 | | | 0.06 | 0.08 |

World and Selected Countries and Regions

Table 05 Barley Area, Yield, and Production

| Country / Region | Area (Million hectares) | | | Yield (Metric tons per hectare) | | | Production (Million metric tons) | | | Change in Production | | | |
|---------------------------------|----------------------------|------------------|----------------------|------------------------------------|------------------|----------------------|-------------------------------------|------------------|----------------------|------------------------|---------|-----------------------|---------|
| | 2020/21 | Prel. 2021/22 | 2022/23 Proj. May | 2020/21 | Prel. 2021/22 | 2022/23 Proj. May | 2020/21 | Prel. 2021/22 | 2022/23 Proj. May | From last month MMT | Percent | From last year MMT | Percent |
| World | 51.36 | 48.60 | 48.37 | 3.10 | 2.98 | 3.08 | 159.41 | 145.03 | 148.97 | | | 3.94 | 2.72 |
| United States | 0.90 | 0.79 | 0.97 | 4.15 | 3.25 | 4.06 | 3.72 | 2.56 | 3.94 | | | 1.38 | 53.83 |
| Total Foreign | 50.46 | 47.81 | 47.40 | 3.09 | 2.98 | 3.06 | 155.69 | 142.47 | 145.03 | | | 2.56 | 1.80 |
| European Union | 11.04 | 10.34 | 10.55 | 4.92 | 5.02 | 4.98 | 54.32 | 51.97 | 52.50 | | | 0.53 | 1.02 |
| United Kingdom | 1.39 | 1.15 | 1.12 | 5.85 | 6.05 | 6.14 | 8.12 | 6.96 | 6.85 | | | -0.11 | -1.59 |
| Former Soviet Union - 12 | | | | | | | | | | | | | |
| Russia | 8.16 | 7.69 | 7.80 | 2.53 | 2.28 | 2.50 | 20.63 | 17.51 | 19.50 | | | 2.00 | 11.40 |
| Ukraine | 2.58 | 2.68 | 2.00 | 3.08 | 3.70 | 3.00 | 7.95 | 9.92 | 6.00 | | | -3.92 | -39.53 |
| Kazakhstan | 2.73 | 2.16 | 2.20 | 1.34 | 1.10 | 1.27 | 3.66 | 2.37 | 2.80 | | | 0.43 | 18.29 |
| Belarus | 0.41 | 0.35 | 0.40 | 3.35 | 2.86 | 2.75 | 1.38 | 1.00 | 1.10 | | | 0.10 | 10.00 |
| Azerbaijan | 0.35 | 0.37 | 0.34 | 2.81 | 2.74 | 2.79 | 0.97 | 1.00 | 0.95 | | | -0.05 | -5.00 |
| Canada | 2.81 | 3.00 | 2.80 | 3.82 | 2.31 | 3.75 | 10.74 | 6.95 | 10.50 | | | 3.55 | 51.12 |
| Australia | 4.40 | 4.35 | 4.30 | 2.98 | 3.15 | 2.67 | 13.10 | 13.70 | 11.50 | | | -2.20 | -16.06 |
| Middle East | | | | | | | | | | | | | |
| Turkey | 3.80 | 3.70 | 3.80 | 2.13 | 1.22 | 1.84 | 8.10 | 4.50 | 7.00 | | | 2.50 | 55.56 |
| Iran | 1.60 | 1.70 | 1.65 | 2.25 | 1.59 | 1.82 | 3.60 | 2.70 | 3.00 | | | 0.30 | 11.11 |
| Iraq | 1.20 | 0.60 | 0.60 | 1.29 | 1.17 | 1.13 | 1.55 | 0.70 | 0.68 | | | -0.02 | -2.86 |
| Syria | 1.50 | 0.80 | 1.00 | 1.27 | 0.81 | 0.90 | 1.90 | 0.65 | 0.90 | | | 0.25 | 38.46 |
| Africa | | | | | | | | | | | | | |
| Ethiopia | 0.90 | 0.96 | 0.97 | 2.52 | 2.45 | 2.47 | 2.26 | 2.35 | 2.40 | | | 0.05 | 2.13 |
| Morocco | 1.47 | 1.49 | 1.30 | 0.44 | 1.87 | 0.60 | 0.64 | 2.78 | 0.78 | | | -2.00 | -71.94 |
| Algeria | 0.98 | 1.03 | 1.03 | 1.24 | 0.93 | 1.76 | 1.21 | 0.95 | 1.80 | | | 0.85 | 89.47 |
| Tunisia | 0.36 | 0.28 | 0.30 | 1.28 | 1.54 | 1.40 | 0.47 | 0.43 | 0.42 | | | -0.01 | -2.33 |
| South Africa | 0.14 | 0.10 | 0.11 | 4.14 | 3.48 | 3.64 | 0.59 | 0.33 | 0.40 | | | 0.07 | 20.85 |
| South America | | | | | | | | | | | | | |
| Argentina | 1.01 | 1.35 | 1.35 | 4.00 | 3.94 | 3.93 | 4.04 | 5.30 | 5.30 | | | 0.00 | 0.00 |
| Uruguay | 0.19 | 0.22 | 0.23 | 4.78 | 4.11 | 4.16 | 0.89 | 0.92 | 0.94 | | | 0.02 | 1.63 |
| Brazil | 0.10 | 0.11 | 0.11 | 3.63 | 3.79 | 3.91 | 0.37 | 0.43 | 0.43 | | | 0.01 | 1.18 |
| India | 0.59 | 0.59 | 0.61 | 2.92 | 2.80 | 2.79 | 1.72 | 1.66 | 1.70 | | | 0.04 | 2.66 |
| China | 0.51 | 0.51 | 0.51 | 4.00 | 3.92 | 3.92 | 2.04 | 2.00 | 2.00 | | | 0.00 | 0.00 |
| Mexico | 0.30 | 0.34 | 0.34 | 3.07 | 2.82 | 2.82 | 0.91 | 0.96 | 0.96 | | | 0.00 | 0.00 |
| Afghanistan | 0.17 | 0.16 | 0.17 | 1.41 | 1.25 | 1.35 | 0.24 | 0.20 | 0.23 | | | 0.03 | 15.00 |
| Others | 1.78 | 1.79 | 1.82 | 2.42 | 2.37 | 2.41 | 4.31 | 4.24 | 4.39 | | | 0.15 | 3.61 |

World and Selected Countries and Regions

Table 06 Oats Area, Yield, and Production

| Country / Region | Area (Million hectares) | | | Yield (Metric tons per hectare) | | | Production (Million metric tons) | | | Change in Production | | | |
|---------------------------------|----------------------------|------------------|----------------------|------------------------------------|------------------|----------------------|-------------------------------------|------------------|----------------------|------------------------|---------|-----------------------|---------|
| | 2020/21 | Prel. 2021/22 | 2022/23 Proj. May | 2020/21 | Prel. 2021/22 | 2022/23 Proj. May | 2020/21 | Prel. 2021/22 | 2022/23 Proj. May | From last month MMT | Percent | From last year MMT | Percent |
| World | 9.96 | 9.49 | 9.92 | 2.56 | 2.37 | 2.52 | 25.49 | 22.49 | 25.00 | | | 2.51 | 11.14 |
| United States | 0.41 | 0.26 | 0.36 | 2.34 | 2.20 | 2.35 | 0.95 | 0.58 | 0.86 | | | 0.28 | 48.10 |
| Total Foreign | 9.55 | 9.23 | 9.56 | 2.57 | 2.37 | 2.53 | 24.53 | 21.91 | 24.14 | | | 2.23 | 10.17 |
| European Union | 2.56 | 2.55 | 2.45 | 3.31 | 2.99 | 3.08 | 8.47 | 7.64 | 7.55 | | | -0.09 | -1.22 |
| Former Soviet Union - 12 | | | | | | | | | | | | | |
| Russia | 2.33 | 2.17 | 2.40 | 1.77 | 1.72 | 1.88 | 4.13 | 3.73 | 4.50 | | | 0.77 | 20.55 |
| Ukraine | 0.20 | 0.18 | 0.18 | 2.54 | 2.61 | 2.29 | 0.52 | 0.48 | 0.40 | | | -0.08 | -16.32 |
| Belarus | 0.16 | 0.15 | 0.16 | 2.87 | 2.33 | 2.42 | 0.45 | 0.35 | 0.38 | | | 0.03 | 7.14 |
| Kazakhstan | 0.23 | 0.20 | 0.24 | 1.05 | 0.90 | 1.15 | 0.24 | 0.18 | 0.28 | | | 0.09 | 51.10 |
| Canada | 1.31 | 1.11 | 1.30 | 3.48 | 2.34 | 3.54 | 4.58 | 2.61 | 4.60 | | | 1.99 | 76.52 |
| South America | | | | | | | | | | | | | |
| Argentina | 0.24 | 0.30 | 0.29 | 2.13 | 2.30 | 2.26 | 0.51 | 0.69 | 0.65 | | | -0.05 | -6.52 |
| Brazil | 0.43 | 0.50 | 0.51 | 2.00 | 2.27 | 2.26 | 0.85 | 1.14 | 1.16 | | | 0.01 | 1.05 |
| Chile | 0.11 | 0.12 | 0.10 | 4.65 | 5.40 | 5.10 | 0.53 | 0.66 | 0.50 | | | -0.17 | -25.45 |
| Uruguay | 0.02 | 0.01 | 0.02 | 2.20 | 2.21 | 2.40 | 0.03 | 0.03 | 0.04 | | | 0.01 | 16.13 |
| Oceania | | | | | | | | | | | | | |
| Australia | 0.95 | 0.85 | 0.90 | 1.76 | 1.88 | 1.61 | 1.67 | 1.60 | 1.45 | | | -0.15 | -9.38 |
| New Zealand | 0.00 | 0.01 | 0.01 | 5.75 | 5.80 | 5.80 | 0.02 | 0.03 | 0.03 | | | 0.00 | 0.00 |
| China | 0.41 | 0.41 | 0.41 | 1.48 | 1.48 | 1.48 | 0.60 | 0.60 | 0.60 | | | 0.00 | 0.00 |
| Africa | | | | | | | | | | | | | |
| Algeria | 0.06 | 0.08 | 0.08 | 1.11 | 1.38 | 1.38 | 0.07 | 0.11 | 0.11 | | | 0.00 | 0.00 |
| Morocco | 0.02 | 0.04 | 0.02 | 0.40 | 1.13 | 0.40 | 0.01 | 0.05 | 0.01 | | | -0.04 | -86.67 |
| South Africa | 0.03 | 0.04 | 0.03 | 2.19 | 1.94 | 1.67 | 0.06 | 0.07 | 0.05 | | | -0.02 | -28.57 |
| Other Europe | | | | | | | | | | | | | |
| United Kingdom | 0.21 | 0.20 | 0.19 | 4.91 | 5.62 | 5.53 | 1.03 | 1.12 | 1.05 | | | -0.07 | -6.50 |
| Norway | 0.07 | 0.07 | 0.07 | 4.29 | 4.29 | 4.29 | 0.30 | 0.30 | 0.30 | | | 0.00 | 0.00 |
| Serbia | 0.03 | 0.03 | 0.03 | 2.17 | 2.17 | 2.17 | 0.07 | 0.07 | 0.07 | | | 0.00 | 0.00 |
| Albania | 0.02 | 0.01 | 0.02 | 2.25 | 2.14 | 2.20 | 0.04 | 0.03 | 0.03 | | | 0.00 | 10.00 |
| Bosnia and Herzegovina | 0.01 | 0.01 | 0.01 | 3.09 | 2.82 | 2.82 | 0.03 | 0.03 | 0.03 | | | 0.00 | 0.00 |
| Turkey | 0.10 | 0.11 | 0.11 | 2.40 | 2.38 | 2.38 | 0.24 | 0.25 | 0.25 | | | 0.00 | 0.00 |
| Mexico | 0.03 | 0.05 | 0.05 | 2.03 | 2.00 | 1.89 | 0.06 | 0.09 | 0.09 | | | -0.01 | -5.56 |
| Others | 0.03 | 0.03 | 0.03 | 1.61 | 1.76 | 1.68 | 0.05 | 0.05 | 0.05 | | | 0.00 | 1.96 |

World and Selected Countries and Regions

Table 07 Rye Area, Yield, and Production

| Country / Region | Area (Million hectares) | | | Yield (Metric tons per hectare) | | | Production (Million metric tons) | | | Change in Production | | | |
|---------------------------------|----------------------------|------------------|----------------------|------------------------------------|------------------|----------------------|-------------------------------------|------------------|----------------------|------------------------|---------|-----------------------|---------|
| | 2020/21 | Prel. 2021/22 | 2022/23 Proj. May | 2020/21 | Prel. 2021/22 | 2022/23 Proj. May | 2020/21 | Prel. 2021/22 | 2022/23 Proj. May | From last month MMT | Percent | From last year MMT | Percent |
| World | 4.16 | 4.02 | 3.88 | 3.43 | 3.10 | 3.16 | 14.30 | 12.47 | 12.28 | | | -0.20 | -1.57 |
| United States | 0.13 | 0.12 | 0.15 | 2.19 | 2.09 | 2.13 | 0.29 | 0.25 | 0.33 | | | 0.08 | 31.73 |
| Total Foreign | 4.03 | 3.90 | 3.73 | 3.47 | 3.14 | 3.20 | 14.00 | 12.22 | 11.95 | | | -0.28 | -2.25 |
| European Union | 2.08 | 1.93 | 1.90 | 4.31 | 4.12 | 4.08 | 8.96 | 7.96 | 7.75 | | | -0.21 | -2.61 |
| Former Soviet Union - 12 | | | | | | | | | | | | | |
| Russia | 0.97 | 0.99 | 0.95 | 2.44 | 1.73 | 2.11 | 2.38 | 1.72 | 2.00 | | | 0.28 | 16.55 |
| Belarus | 0.36 | 0.33 | 0.30 | 2.92 | 2.46 | 2.50 | 1.05 | 0.80 | 0.75 | | | -0.05 | -6.25 |
| Ukraine | 0.14 | 0.18 | 0.10 | 3.28 | 3.43 | 2.85 | 0.46 | 0.60 | 0.29 | | | -0.32 | -52.50 |
| Kazakhstan | 0.02 | 0.04 | 0.03 | 1.25 | 0.91 | 1.20 | 0.03 | 0.04 | 0.03 | | | -0.01 | -25.00 |
| Turkey | 0.11 | 0.12 | 0.11 | 2.91 | 2.87 | 2.91 | 0.32 | 0.33 | 0.32 | | | -0.01 | -3.03 |
| Canada | 0.15 | 0.15 | 0.15 | 3.19 | 3.22 | 3.17 | 0.49 | 0.47 | 0.48 | | | 0.00 | 0.42 |
| South America | | | | | | | | | | | | | |
| Chile | 0.00 | 0.00 | 0.00 | 5.00 | 5.00 | 5.00 | 0.01 | 0.01 | 0.01 | | | 0.00 | 0.00 |
| Argentina | 0.09 | 0.07 | 0.10 | 1.50 | 2.00 | 1.84 | 0.14 | 0.14 | 0.18 | | | 0.03 | 21.53 |
| Other Europe | | | | | | | | | | | | | |
| Bosnia and Herzegovina | 0.00 | 0.00 | 0.00 | 3.67 | 3.00 | 2.75 | 0.01 | 0.01 | 0.01 | | | 0.00 | 22.22 |
| Switzerland | 0.00 | 0.00 | 0.00 | 5.50 | 5.50 | 5.50 | 0.01 | 0.01 | 0.01 | | | 0.00 | 0.00 |
| Serbia | 0.00 | 0.00 | 0.00 | 2.50 | 2.50 | 2.50 | 0.01 | 0.01 | 0.01 | | | 0.00 | 0.00 |
| Australia | 0.05 | 0.05 | 0.05 | 0.71 | 0.71 | 0.71 | 0.03 | 0.03 | 0.03 | | | 0.00 | 0.00 |
| Others | 0.04 | 0.04 | 0.04 | 2.50 | 2.18 | 2.16 | 0.11 | 0.10 | 0.10 | | | 0.00 | -1.04 |

World and Selected Countries and Regions

Table 08 Sorghum Area, Yield, and Production

| Country / Region | Area (Million hectares) | | | Yield (Metric tons per hectare) | | | Production (Million metric tons) | | | Change in Production | | | |
|-----------------------|----------------------------|------------------|----------------------|------------------------------------|------------------|----------------------|-------------------------------------|------------------|----------------------|------------------------|---------|-----------------------|---------|
| | 2020/21 | Prel. 2021/22 | 2022/23 Proj. May | 2020/21 | Prel. 2021/22 | 2022/23 Proj. May | 2020/21 | Prel. 2021/22 | 2022/23 Proj. May | From last month MMT | Percent | From last year MMT | Percent |
| World | 43.05 | 41.68 | 41.10 | 1.45 | 1.50 | 1.52 | 62.42 | 62.33 | 62.67 | | | 0.34 | 0.55 |
| United States | 2.06 | 2.63 | 2.23 | 4.59 | 4.33 | 4.35 | 9.47 | 11.38 | 9.68 | | | -1.70 | -14.92 |
| Total Foreign | 40.99 | 39.06 | 38.88 | 1.29 | 1.30 | 1.36 | 52.94 | 50.95 | 52.99 | | | 2.04 | 4.00 |
| Africa | | | | | | | | | | | | | |
| Nigeria | 5.60 | 5.70 | 5.70 | 1.18 | 1.18 | 1.23 | 6.59 | 6.73 | 7.00 | | | 0.28 | 4.09 |
| Ethiopia | 1.79 | 1.65 | 1.66 | 2.83 | 2.70 | 2.71 | 5.06 | 4.45 | 4.50 | | | 0.05 | 1.12 |
| Sudan | 9.03 | 6.92 | 7.00 | 0.57 | 0.51 | 0.71 | 5.15 | 3.53 | 5.00 | | | 1.47 | 41.64 |
| Burkina Faso | 1.86 | 1.90 | 1.90 | 0.99 | 0.87 | 1.00 | 1.84 | 1.64 | 1.90 | | | 0.26 | 15.57 |
| Mali | 1.83 | 1.50 | 1.50 | 1.00 | 0.83 | 1.00 | 1.82 | 1.24 | 1.50 | | | 0.26 | 21.07 |
| Niger | 3.67 | 3.70 | 3.70 | 0.58 | 0.33 | 0.51 | 2.13 | 1.21 | 1.90 | | | 0.69 | 57.42 |
| Cameroon | 0.74 | 0.74 | 0.74 | 1.62 | 1.62 | 1.62 | 1.20 | 1.20 | 1.20 | | | 0.00 | 0.00 |
| Tanzania | 0.70 | 0.70 | 0.70 | 1.07 | 1.02 | 1.07 | 0.75 | 0.72 | 0.75 | | | 0.04 | 4.90 |
| Egypt | 0.15 | 0.15 | 0.15 | 4.91 | 5.00 | 5.00 | 0.73 | 0.75 | 0.75 | | | 0.00 | 0.00 |
| Uganda | 0.31 | 0.25 | 0.25 | 0.82 | 0.80 | 0.90 | 0.25 | 0.20 | 0.23 | | | 0.03 | 12.50 |
| Ghana | 0.30 | 0.31 | 0.31 | 1.13 | 1.11 | 1.13 | 0.35 | 0.35 | 0.35 | | | 0.01 | 1.45 |
| Mozambique | 0.26 | 0.25 | 0.25 | 0.54 | 0.64 | 0.64 | 0.14 | 0.16 | 0.16 | | | 0.00 | 0.00 |
| South Africa | 0.05 | 0.04 | 0.04 | 4.39 | 3.95 | 3.75 | 0.22 | 0.15 | 0.15 | | | 0.00 | 0.00 |
| Mexico | 1.29 | 1.42 | 1.42 | 3.37 | 3.31 | 3.42 | 4.35 | 4.70 | 4.85 | | | 0.15 | 3.19 |
| South America | | | | | | | | | | | | | |
| Argentina | 0.75 | 0.95 | 0.88 | 4.43 | 3.95 | 4.34 | 3.32 | 3.75 | 3.80 | | | 0.05 | 1.33 |
| Brazil | 0.87 | 0.95 | 0.98 | 2.41 | 3.20 | 3.00 | 2.08 | 3.04 | 2.94 | | | -0.10 | -3.35 |
| South Asia | | | | | | | | | | | | | |
| India | 4.38 | 4.60 | 4.50 | 1.10 | 0.96 | 0.98 | 4.81 | 4.40 | 4.40 | | | 0.00 | 0.00 |
| Pakistan | 0.13 | 0.26 | 0.22 | 0.76 | 0.59 | 0.63 | 0.10 | 0.15 | 0.14 | | | -0.02 | -10.00 |
| China | 0.64 | 0.63 | 0.63 | 4.68 | 4.76 | 4.76 | 2.97 | 3.00 | 3.00 | | | 0.00 | 0.00 |
| Australia | 0.64 | 0.62 | 0.55 | 2.97 | 4.19 | 2.91 | 1.90 | 2.60 | 1.60 | | | -1.00 | -38.46 |
| European Union | 0.21 | 0.18 | 0.19 | 5.15 | 5.72 | 5.34 | 1.10 | 1.01 | 1.02 | | | 0.01 | 0.89 |
| Others | 5.80 | 5.65 | 5.62 | 1.05 | 1.06 | 1.04 | 6.09 | 5.99 | 5.86 | | | -0.13 | -2.09 |

World and Selected Countries and Regions

Table 09 Rice Area, Yield, and Production
World and Selected Countries and Regions

| Country / Region | Area (Million hectares) | | | Yield (Metric tons per hectare) | | | Production (Million metric tons) | | | Change in Production | | | |
|-----------------------|----------------------------|------------------|----------------------|------------------------------------|------------------|----------------------|-------------------------------------|------------------|----------------------|------------------------|---------|-----------------------|---------|
| | 2020/21 | Prel. 2021/22 | 2022/23 Proj. May | 2020/21 | Prel. 2021/22 | 2022/23 Proj. May | 2020/21 | Prel. 2021/22 | 2022/23 Proj. May | From last month MMT | Percent | From last year MMT | Percent |
| World | 165.22 | 166.58 | 166.91 | 4.60 | 4.60 | 4.60 | 509.31 | 512.86 | 514.63 | | | 1.78 | 0.35 |
| United States | 1.21 | 1.01 | 0.97 | 8.54 | 8.64 | 8.52 | 7.22 | 6.09 | 5.80 | | | -0.29 | -4.75 |
| Total Foreign | 164.02 | 165.58 | 165.94 | 4.57 | 4.57 | 4.58 | 502.09 | 506.77 | 508.83 | | | 2.06 | 0.41 |
| East Asia | | | | | | | | | | | | | |
| China | 30.08 | 29.92 | 30.00 | 7.04 | 7.11 | 7.10 | 148.30 | 148.99 | 149.00 | | | 0.01 | 0.01 |
| Japan | 1.53 | 1.52 | 1.51 | 6.79 | 6.90 | 6.87 | 7.57 | 7.64 | 7.55 | | | -0.09 | -1.18 |
| Korea, South | 0.73 | 0.73 | 0.73 | 6.49 | 7.12 | 6.90 | 3.51 | 3.88 | 3.77 | | | -0.11 | -2.83 |
| Korea, North | 0.49 | 0.50 | 0.50 | 4.44 | 4.18 | 4.18 | 1.40 | 1.36 | 1.36 | | | 0.00 | 0.00 |
| South Asia | | | | | | | | | | | | | |
| India | 45.77 | 47.00 | 47.00 | 4.08 | 4.12 | 4.15 | 124.37 | 129.00 | 130.00 | | | 1.00 | 0.78 |
| Bangladesh | 11.50 | 11.62 | 11.75 | 4.51 | 4.63 | 4.60 | 34.60 | 35.85 | 36.00 | | | 0.15 | 0.42 |
| Pakistan | 3.34 | 3.40 | 3.40 | 3.79 | 3.84 | 3.93 | 8.42 | 8.70 | 8.90 | | | 0.20 | 2.30 |
| Nepal | 1.48 | 1.47 | 1.48 | 3.81 | 3.48 | 3.73 | 3.74 | 3.42 | 3.67 | | | 0.25 | 7.26 |
| Sri Lanka | 1.09 | 1.10 | 1.10 | 4.57 | 3.91 | 4.00 | 3.39 | 2.92 | 3.00 | | | 0.07 | 2.43 |
| Southeast Asia | | | | | | | | | | | | | |
| Indonesia | 11.40 | 11.60 | 11.65 | 4.77 | 4.67 | 4.68 | 34.50 | 34.40 | 34.60 | | | 0.20 | 0.58 |
| Vietnam | 7.31 | 7.30 | 7.29 | 6.00 | 5.99 | 6.01 | 27.38 | 27.33 | 27.40 | | | 0.07 | 0.25 |
| Thailand | 10.51 | 10.59 | 10.70 | 2.72 | 2.81 | 2.80 | 18.86 | 19.65 | 19.80 | | | 0.15 | 0.76 |
| Burma | 6.90 | 6.90 | 6.90 | 2.85 | 2.80 | 2.83 | 12.60 | 12.35 | 12.50 | | | 0.15 | 1.20 |
| Philippines | 4.76 | 4.80 | 4.80 | 4.14 | 4.13 | 4.10 | 12.42 | 12.47 | 12.41 | | | -0.06 | -0.51 |
| Cambodia | 3.27 | 3.34 | 3.35 | 2.90 | 2.88 | 2.91 | 5.78 | 5.86 | 5.94 | | | 0.08 | 1.33 |
| Laos | 0.93 | 0.94 | 0.95 | 3.24 | 3.28 | 3.26 | 1.90 | 1.95 | 1.95 | | | 0.00 | 0.00 |
| Malaysia | 0.68 | 0.67 | 0.68 | 4.07 | 4.09 | 4.07 | 1.80 | 1.78 | 1.80 | | | 0.02 | 1.12 |
| South America | | | | | | | | | | | | | |
| Brazil | 1.68 | 1.65 | 1.60 | 7.00 | 6.36 | 6.53 | 8.00 | 7.14 | 7.10 | | | -0.04 | -0.56 |
| Peru | 0.42 | 0.42 | 0.42 | 8.21 | 8.35 | 7.86 | 2.36 | 2.40 | 2.28 | | | -0.12 | -4.97 |
| Africa | | | | | | | | | | | | | |
| Egypt | 0.70 | 0.50 | 0.50 | 8.28 | 8.41 | 8.41 | 4.00 | 2.90 | 2.90 | | | 0.00 | 0.00 |
| Madagascar | 1.68 | 1.65 | 1.60 | 2.53 | 2.42 | 2.38 | 2.71 | 2.56 | 2.43 | | | -0.13 | -5.00 |
| Nigeria | 3.60 | 3.65 | 3.70 | 2.27 | 2.29 | 2.30 | 5.15 | 5.26 | 5.36 | | | 0.10 | 1.90 |
| European Union | 0.42 | 0.40 | 0.40 | 6.73 | 6.54 | 6.76 | 1.83 | 1.72 | 1.74 | | | 0.02 | 1.34 |
| Iran | 0.58 | 0.56 | 0.57 | 5.27 | 5.14 | 5.32 | 2.00 | 1.90 | 2.00 | | | 0.10 | 5.26 |
| Others | 13.21 | 13.35 | 13.36 | 2.93 | 2.88 | 2.88 | 25.50 | 25.34 | 25.38 | | | 0.05 | 0.19 |

Yield is on a rough basis, before the milling process. Production is on a milled basis, after the milling process.

Table 10 Total Oilseed Area, Yield, and Production

World and Selected Countries and Regions

| Country / Region | Area (Million hectares) | | | Yield (Metric tons per hectare) | | | Production (Million metric tons) | | | Change in Production | | | |
|---------------------------------|----------------------------|------------------|----------------------|------------------------------------|------------------|----------------------|-------------------------------------|------------------|----------------------|------------------------|---------|-----------------------|---------|
| | 2020/21 | Prel. 2021/22 | 2022/23 Proj. May | 2020/21 | Prel. 2021/22 | 2022/23 Proj. May | 2020/21 | Prel. 2021/22 | 2022/23 Proj. May | From last month MMT | Percent | From last year MMT | Percent |
| World Total | -- | -- | -- | -- | -- | -- | 606.64 | 596.87 | 647.15 | | | 50.28 | 8.42 |
| Total Foreign | -- | -- | -- | -- | -- | -- | 482.12 | 466.33 | 510.54 | | | 44.22 | 9.48 |
| Oilseed, Copra | -- | -- | -- | -- | -- | -- | 5.59 | 5.86 | 5.86 | | | 0.00 | 0.00 |
| Oilseed, Palm Kernel | -- | -- | -- | -- | -- | -- | 19.03 | 20.05 | 20.56 | | | 0.51 | 2.55 |
| Major Oilseeds | 251.27 | 259.34 | 262.57 | 2.32 | 2.20 | 2.36 | 582.02 | 570.96 | 620.72 | | | 49.76 | 8.72 |
| United States | 38.81 | 41.07 | 42.17 | 3.21 | 3.18 | 3.24 | 124.52 | 130.54 | 136.60 | | | 6.06 | 4.64 |
| Foreign Oilseeds | 212.46 | 218.27 | 220.40 | 2.15 | 2.02 | 2.20 | 457.50 | 440.42 | 484.12 | | | 43.70 | 9.92 |
| South America | 65.60 | 67.24 | 70.07 | 3.21 | 2.78 | 3.24 | 210.32 | 187.16 | 227.30 | | | 40.13 | 21.44 |
| Brazil | 40.77 | 42.63 | 43.85 | 3.53 | 3.05 | 3.52 | 143.77 | 130.16 | 154.20 | | | 24.04 | 18.47 |
| Argentina | 18.97 | 18.51 | 19.84 | 2.70 | 2.54 | 2.86 | 51.21 | 47.03 | 56.81 | | | 9.78 | 20.81 |
| Paraguay | 3.24 | 3.39 | 3.54 | 3.09 | 1.28 | 2.86 | 10.02 | 4.32 | 10.13 | | | 5.81 | 134.43 |
| Bolivia | 1.51 | 1.53 | 1.52 | 2.09 | 2.07 | 2.07 | 3.15 | 3.16 | 3.15 | | | -0.02 | -0.51 |
| Uruguay | 0.97 | 1.04 | 1.18 | 1.87 | 2.04 | 2.24 | 1.82 | 2.13 | 2.63 | | | 0.50 | 23.38 |
| China | 25.50 | 24.15 | 24.95 | 2.57 | 2.57 | 2.57 | 65.58 | 62.08 | 64.08 | | | 2.00 | 3.22 |
| South Asia | 42.45 | 41.72 | 43.22 | 0.96 | 1.06 | 1.05 | 40.68 | 44.20 | 45.21 | | | 1.01 | 2.28 |
| India | 39.15 | 38.80 | 40.05 | 0.96 | 1.04 | 1.03 | 37.55 | 40.52 | 41.37 | | | 0.85 | 2.11 |
| Pakistan | 2.94 | 2.55 | 2.80 | 0.92 | 1.27 | 1.21 | 2.69 | 3.25 | 3.40 | | | 0.15 | 4.55 |
| European Union | 11.11 | 11.21 | 11.73 | 2.59 | 2.76 | 2.77 | 28.79 | 30.94 | 32.51 | | | 1.57 | 5.07 |
| United Kingdom | 0.38 | 0.31 | 0.36 | 2.73 | 3.20 | 3.33 | 1.04 | 0.98 | 1.20 | | | 0.22 | 22.32 |
| Former Soviet Union - 12 | 25.91 | 27.77 | 25.19 | 1.72 | 1.89 | 1.75 | 44.70 | 52.46 | 43.97 | | | -8.49 | -16.19 |
| Russia | 12.50 | 14.23 | 13.60 | 1.61 | 1.62 | 1.66 | 20.14 | 23.11 | 22.60 | | | -0.51 | -2.19 |
| Ukraine | 9.65 | 9.58 | 7.60 | 2.06 | 2.54 | 2.17 | 19.85 | 24.32 | 16.50 | | | -7.82 | -32.14 |
| Uzbekistan | 1.08 | 1.08 | 1.09 | 1.19 | 1.05 | 1.13 | 1.28 | 1.13 | 1.23 | | | 0.10 | 8.89 |
| Canada | 10.41 | 11.18 | 10.85 | 2.49 | 1.70 | 2.43 | 25.95 | 18.95 | 26.41 | | | 7.46 | 39.34 |
| Africa | 22.20 | 24.73 | 24.00 | 1.08 | 0.98 | 1.04 | 24.02 | 24.14 | 25.00 | | | 0.86 | 3.56 |
| Nigeria | 4.62 | 4.97 | 4.87 | 1.19 | 1.11 | 1.21 | 5.49 | 5.50 | 5.90 | | | 0.41 | 7.37 |
| South Africa | 1.36 | 1.66 | 1.75 | 1.98 | 1.81 | 1.81 | 2.69 | 3.00 | 3.16 | | | 0.16 | 5.40 |
| Tanzania | 1.17 | 1.24 | 1.35 | 1.02 | 0.98 | 0.93 | 1.19 | 1.21 | 1.25 | | | 0.04 | 3.39 |
| Southeast Asia | 3.25 | 3.21 | 3.18 | 1.36 | 1.36 | 1.38 | 4.42 | 4.38 | 4.37 | | | -0.01 | -0.16 |
| Burma | 2.03 | 2.04 | 2.04 | 1.17 | 1.19 | 1.21 | 2.37 | 2.42 | 2.46 | | | 0.05 | 1.86 |
| Indonesia | 0.94 | 0.90 | 0.87 | 1.54 | 1.55 | 1.55 | 1.45 | 1.39 | 1.35 | | | -0.04 | -2.53 |
| Australia | 2.78 | 3.70 | 3.60 | 1.95 | 2.19 | 1.78 | 5.43 | 8.10 | 6.43 | | | -1.67 | -20.58 |
| Turkey | 1.18 | 1.32 | 1.45 | 2.46 | 2.55 | 2.58 | 2.89 | 3.37 | 3.73 | | | 0.36 | 10.72 |
| Others | 1.70 | 1.74 | 1.81 | 2.18 | 2.10 | 2.17 | 3.69 | 3.65 | 3.92 | | | 0.27 | 7.48 |

World Total and Total Foreign: (Major Oilseeds plus copra and palm kernel) Major Oilseeds: (soybeans, sunflowerseeds, peanuts(inshell), cottonseed and rapeseed)

Table 11 Soybean Area, Yield, and Production

| Country / Region | Area (Million hectares) | | | Yield (Metric tons per hectare) | | | Production (Million metric tons) | | | Change in Production | | | |
|---------------------------------|----------------------------|------------------|----------------------|------------------------------------|------------------|----------------------|-------------------------------------|------------------|----------------------|------------------------|---------|-----------------------|---------|
| | 2020/21 | Prel. 2021/22 | 2022/23 Proj. May | 2020/21 | Prel. 2021/22 | 2022/23 Proj. May | 2020/21 | Prel. 2021/22 | 2022/23 Proj. May | From last month MMT | Percent | From last year MMT | Percent |
| World | 128.61 | 130.18 | 134.93 | 2.86 | 2.68 | 2.93 | 368.12 | 349.37 | 394.69 | | | 45.33 | 12.97 |
| United States | 33.43 | 34.94 | 36.46 | 3.43 | 3.45 | 3.46 | 114.75 | 120.71 | 126.28 | | | 5.57 | 4.62 |
| Total Foreign | 95.18 | 95.24 | 98.46 | 2.66 | 2.40 | 2.73 | 253.37 | 228.66 | 268.41 | | | 39.75 | 17.39 |
| South America | | | | | | | | | | | | | |
| Brazil | 39.20 | 40.80 | 42.00 | 3.56 | 3.06 | 3.55 | 139.50 | 125.00 | 149.00 | | | 24.00 | 19.20 |
| Argentina | 16.47 | 16.00 | 17.00 | 2.81 | 2.63 | 3.00 | 46.20 | 42.00 | 51.00 | | | 9.00 | 21.43 |
| Paraguay | 3.15 | 3.30 | 3.45 | 3.14 | 1.27 | 2.90 | 9.90 | 4.20 | 10.00 | | | 5.80 | 138.10 |
| Bolivia | 1.39 | 1.40 | 1.40 | 2.17 | 2.14 | 2.14 | 3.00 | 3.00 | 3.00 | | | 0.00 | 0.00 |
| Uruguay | 0.91 | 0.98 | 1.10 | 1.88 | 2.07 | 2.27 | 1.71 | 2.02 | 2.50 | | | 0.48 | 23.76 |
| East Asia | | | | | | | | | | | | | |
| China | 9.88 | 8.40 | 8.90 | 1.98 | 1.95 | 1.97 | 19.60 | 16.40 | 17.50 | | | 1.10 | 6.71 |
| Korea, South | 0.06 | 0.06 | 0.06 | 1.47 | 1.71 | 1.73 | 0.08 | 0.09 | 0.10 | | | 0.00 | 1.06 |
| Korea, North | 0.16 | 0.17 | 0.17 | 1.40 | 1.44 | 1.44 | 0.23 | 0.24 | 0.24 | | | 0.00 | 0.00 |
| Japan | 0.14 | 0.15 | 0.15 | 1.54 | 1.63 | 1.55 | 0.22 | 0.24 | 0.23 | | | -0.01 | -2.52 |
| India | 12.92 | 12.50 | 12.70 | 0.81 | 0.95 | 0.91 | 10.45 | 11.90 | 11.50 | | | -0.40 | -3.36 |
| Canada | 2.04 | 2.13 | 2.20 | 3.12 | 2.94 | 2.86 | 6.36 | 6.27 | 6.30 | | | 0.03 | 0.45 |
| Former Soviet Union - 12 | | | | | | | | | | | | | |
| Russia | 2.71 | 2.99 | 3.30 | 1.59 | 1.59 | 1.61 | 4.31 | 4.76 | 5.30 | | | 0.54 | 11.34 |
| Ukraine | 1.46 | 1.44 | 1.00 | 2.05 | 2.64 | 2.30 | 3.00 | 3.80 | 2.30 | | | -1.50 | -39.47 |
| European Union | 1.00 | 0.99 | 1.05 | 2.61 | 2.76 | 2.86 | 2.60 | 2.73 | 3.00 | | | 0.27 | 9.89 |
| Southeast Asia | | | | | | | | | | | | | |
| Indonesia | 0.39 | 0.35 | 0.33 | 1.22 | 1.21 | 1.21 | 0.48 | 0.43 | 0.40 | | | -0.03 | -5.88 |
| Vietnam | 0.04 | 0.03 | 0.03 | 1.61 | 1.61 | 1.60 | 0.06 | 0.05 | 0.05 | | | -0.01 | -9.43 |
| Thailand | 0.03 | 0.03 | 0.03 | 1.63 | 1.63 | 1.63 | 0.05 | 0.05 | 0.05 | | | 0.00 | 0.00 |
| Burma | 0.14 | 0.13 | 0.13 | 1.04 | 1.04 | 1.04 | 0.14 | 0.14 | 0.13 | | | -0.01 | -3.70 |
| Serbia | 0.22 | 0.22 | 0.22 | 2.89 | 2.45 | 2.77 | 0.64 | 0.54 | 0.61 | | | 0.07 | 12.96 |
| Mexico | 0.16 | 0.19 | 0.19 | 1.58 | 1.57 | 1.58 | 0.25 | 0.29 | 0.30 | | | 0.01 | 3.45 |
| Africa | | | | | | | | | | | | | |
| South Africa | 0.83 | 0.93 | 1.00 | 2.29 | 2.05 | 2.00 | 1.90 | 1.90 | 2.00 | | | 0.10 | 5.26 |
| Nigeria | 1.10 | 1.20 | 1.20 | 1.01 | 0.93 | 1.04 | 1.11 | 1.12 | 1.25 | | | 0.13 | 11.91 |
| Zambia | 0.16 | 0.25 | 0.21 | 1.81 | 0.94 | 1.43 | 0.30 | 0.24 | 0.30 | | | 0.06 | 27.12 |
| Uganda | 0.05 | 0.05 | 0.05 | 0.60 | 0.60 | 0.60 | 0.03 | 0.03 | 0.03 | | | 0.00 | 0.00 |
| Middle East | | | | | | | | | | | | | |
| Iran | 0.07 | 0.07 | 0.08 | 2.41 | 2.29 | 2.27 | 0.17 | 0.16 | 0.17 | | | 0.01 | 6.25 |
| Turkey | 0.03 | 0.03 | 0.04 | 3.79 | 3.91 | 4.00 | 0.11 | 0.13 | 0.14 | | | 0.02 | 12.00 |
| Others | 0.49 | 0.47 | 0.50 | 2.06 | 2.03 | 2.05 | 1.00 | 0.95 | 1.02 | | | 0.07 | 7.72 |

World and Selected Countries and Regions

Table 12 Cottonseed Area, Yield, and Production

| Country / Region | Area (Million hectares) | | | Yield (Metric tons per hectare) | | | Production (Million metric tons) | | | Change in Production | | | |
|---------------------------------|----------------------------|------------------|----------------------|------------------------------------|------------------|----------------------|-------------------------------------|------------------|----------------------|------------------------|---------|-----------------------|---------|
| | 2020/21 | Prel. 2021/22 | 2022/23 Proj. May | 2020/21 | Prel. 2021/22 | 2022/23 Proj. May | 2020/21 | Prel. 2021/22 | 2022/23 Proj. May | From last month MMT | Percent | From last year MMT | Percent |
| World | 30.86 | 31.70 | 32.38 | 1.32 | 1.35 | 1.36 | 40.81 | 42.75 | 44.07 | | | 1.33 | 3.10 |
| United States | 3.33 | 4.16 | 3.70 | 1.22 | 1.16 | 1.26 | 4.05 | 4.83 | 4.64 | | | -0.19 | -3.91 |
| Total Foreign | 27.54 | 27.54 | 28.69 | 1.33 | 1.38 | 1.37 | 36.75 | 37.92 | 39.43 | | | 1.52 | 4.00 |
| South Asia | | | | | | | | | | | | | |
| India | 13.29 | 12.15 | 12.70 | 0.88 | 0.89 | 0.92 | 11.72 | 10.83 | 11.68 | | | 0.85 | 7.84 |
| Pakistan | 2.20 | 2.00 | 2.20 | 0.89 | 1.30 | 1.22 | 1.95 | 2.60 | 2.69 | | | 0.09 | 3.35 |
| China | 3.25 | 3.10 | 3.15 | 3.50 | 3.41 | 3.42 | 11.37 | 10.58 | 10.78 | | | 0.20 | 1.85 |
| Former Soviet Union - 12 | | | | | | | | | | | | | |
| Uzbekistan | 1.06 | 1.06 | 1.07 | 1.16 | 1.02 | 1.10 | 1.23 | 1.08 | 1.18 | | | 0.10 | 9.10 |
| Turkmenistan | 0.55 | 0.55 | 0.55 | 0.66 | 0.64 | 0.64 | 0.36 | 0.35 | 0.35 | | | 0.00 | 0.00 |
| Tajikistan | 0.16 | 0.17 | 0.17 | 1.11 | 1.15 | 1.15 | 0.18 | 0.20 | 0.20 | | | 0.00 | 0.00 |
| Kazakhstan | 0.11 | 0.12 | 0.12 | 0.95 | 0.90 | 0.93 | 0.11 | 0.10 | 0.11 | | | 0.00 | 3.88 |
| South America | | | | | | | | | | | | | |
| Brazil | 1.37 | 1.60 | 1.60 | 2.62 | 2.74 | 2.74 | 3.59 | 4.38 | 4.38 | | | 0.00 | 0.00 |
| Argentina | 0.41 | 0.48 | 0.43 | 0.72 | 0.68 | 0.71 | 0.29 | 0.33 | 0.30 | | | -0.03 | -7.98 |
| Middle East | | | | | | | | | | | | | |
| Turkey | 0.35 | 0.45 | 0.53 | 2.71 | 2.76 | 2.67 | 0.95 | 1.24 | 1.40 | | | 0.16 | 13.13 |
| Syria | 0.03 | 0.03 | 0.03 | 2.36 | 2.20 | 2.20 | 0.06 | 0.06 | 0.06 | | | 0.00 | 0.00 |
| Iran | 0.10 | 0.10 | 0.10 | 1.35 | 1.35 | 1.35 | 0.13 | 0.14 | 0.14 | | | 0.00 | 0.00 |
| Australia | 0.28 | 0.60 | 0.55 | 3.06 | 2.75 | 3.00 | 0.84 | 1.65 | 1.65 | | | 0.00 | 0.00 |
| European Union | 0.34 | 0.32 | 0.33 | 1.59 | 1.58 | 1.54 | 0.54 | 0.51 | 0.51 | | | 0.00 | -0.79 |
| Africa | | | | | | | | | | | | | |
| Burkina Faso | 0.56 | 0.60 | 0.65 | 0.47 | 0.46 | 0.45 | 0.26 | 0.27 | 0.29 | | | 0.02 | 6.23 |
| Mali | 0.17 | 0.72 | 0.74 | 0.51 | 0.56 | 0.55 | 0.08 | 0.40 | 0.41 | | | 0.01 | 1.49 |
| Cameroon | 0.23 | 0.23 | 0.24 | 1.51 | 1.59 | 1.35 | 0.34 | 0.37 | 0.33 | | | -0.04 | -10.96 |
| Cote d'Ivoire | 0.45 | 0.47 | 0.46 | 0.61 | 0.60 | 0.58 | 0.27 | 0.28 | 0.27 | | | -0.01 | -4.98 |
| Benin | 0.62 | 0.64 | 0.65 | 0.78 | 0.78 | 0.76 | 0.48 | 0.50 | 0.50 | | | 0.00 | 0.00 |
| Tanzania | 0.17 | 0.24 | 0.35 | 0.56 | 0.46 | 0.43 | 0.09 | 0.11 | 0.15 | | | 0.04 | 36.94 |
| Egypt | 0.07 | 0.09 | 0.10 | 1.00 | 1.00 | 0.97 | 0.07 | 0.09 | 0.10 | | | 0.01 | 14.12 |
| Nigeria | 0.27 | 0.27 | 0.27 | 0.56 | 0.56 | 0.56 | 0.15 | 0.15 | 0.15 | | | 0.00 | 0.00 |
| Uganda | 0.10 | 0.10 | 0.10 | 1.40 | 1.40 | 1.49 | 0.14 | 0.14 | 0.15 | | | 0.01 | 6.43 |
| Zimbabwe | 0.24 | 0.21 | 0.21 | 0.55 | 0.36 | 0.43 | 0.13 | 0.08 | 0.09 | | | 0.02 | 19.74 |
| Sudan | 0.20 | 0.20 | 0.20 | 1.41 | 1.41 | 1.53 | 0.28 | 0.28 | 0.31 | | | 0.02 | 8.51 |
| Mexico | 0.15 | 0.15 | 0.19 | 2.40 | 2.71 | 2.38 | 0.35 | 0.42 | 0.45 | | | 0.04 | 8.39 |
| Burma | 0.24 | 0.25 | 0.25 | 1.17 | 1.18 | 1.18 | 0.28 | 0.29 | 0.29 | | | 0.00 | 0.00 |
| Others | 0.63 | 0.66 | 0.77 | 0.81 | 0.78 | 0.72 | 0.51 | 0.52 | 0.56 | | | 0.04 | 8.54 |

World and Selected Countries and Regions

Table 13 Peanut Area, Yield, and Production

| Country / Region | Area (Million hectares) | | | Yield (Metric tons per hectare) | | | Production (Million metric tons) | | | Change in Production | | | |
|--------------------------|----------------------------|------------------|----------------------|------------------------------------|------------------|----------------------|-------------------------------------|------------------|----------------------|------------------------|---------|-----------------------|---------|
| | 2020/21 | Prel. 2021/22 | 2022/23 Proj. May | 2020/21 | Prel. 2021/22 | 2022/23 Proj. May | 2020/21 | Prel. 2021/22 | 2022/23 Proj. May | From last month MMT | Percent | From last year MMT | Percent |
| World | 30.00 | 30.88 | 30.01 | 1.67 | 1.63 | 1.70 | 50.25 | 50.29 | 50.91 | | | 0.63 | 1.25 |
| United States | 0.65 | 0.63 | 0.61 | 4.27 | 4.64 | 4.66 | 2.79 | 2.90 | 2.84 | | | -0.06 | -2.00 |
| Total Foreign | 29.35 | 30.26 | 29.40 | 1.62 | 1.57 | 1.64 | 47.46 | 47.39 | 48.07 | | | 0.69 | 1.45 |
| China | 4.73 | 4.75 | 4.80 | 3.80 | 3.83 | 3.81 | 17.99 | 18.20 | 18.30 | | | 0.10 | 0.55 |
| Africa | | | | | | | | | | | | | |
| Nigeria | 3.25 | 3.50 | 3.40 | 1.30 | 1.21 | 1.32 | 4.23 | 4.23 | 4.50 | | | 0.27 | 6.43 |
| Sudan | 3.20 | 3.94 | 3.00 | 0.87 | 0.60 | 0.83 | 2.77 | 2.36 | 2.50 | | | 0.15 | 6.16 |
| Senegal | 1.23 | 1.20 | 1.20 | 1.47 | 1.40 | 1.42 | 1.80 | 1.68 | 1.70 | | | 0.02 | 1.31 |
| Cameroon | 0.43 | 0.43 | 0.43 | 1.40 | 1.40 | 1.40 | 0.60 | 0.60 | 0.60 | | | 0.00 | 0.00 |
| Ghana | 0.33 | 0.33 | 0.33 | 1.45 | 1.28 | 1.42 | 0.48 | 0.42 | 0.47 | | | 0.05 | 11.37 |
| Chad | 0.76 | 0.80 | 0.80 | 1.11 | 1.13 | 1.13 | 0.84 | 0.90 | 0.90 | | | 0.00 | 0.00 |
| Malawi | 0.40 | 0.40 | 0.40 | 0.88 | 0.88 | 0.88 | 0.35 | 0.35 | 0.35 | | | 0.00 | 0.00 |
| Congo (Kinshasa) | 0.50 | 0.50 | 0.50 | 0.90 | 0.90 | 0.90 | 0.45 | 0.45 | 0.45 | | | 0.00 | 0.00 |
| Niger | 0.90 | 0.92 | 0.92 | 0.66 | 0.56 | 0.60 | 0.59 | 0.52 | 0.55 | | | 0.03 | 5.97 |
| Mali | 0.43 | 0.43 | 0.43 | 1.16 | 0.87 | 1.00 | 0.49 | 0.37 | 0.43 | | | 0.06 | 15.49 |
| Uganda | 0.34 | 0.40 | 0.40 | 0.99 | 0.75 | 0.75 | 0.34 | 0.30 | 0.30 | | | 0.00 | 0.00 |
| Burkina Faso | 0.65 | 0.60 | 0.60 | 0.97 | 0.80 | 0.83 | 0.63 | 0.48 | 0.50 | | | 0.02 | 4.82 |
| Guinea | 0.98 | 1.10 | 1.10 | 1.10 | 1.21 | 1.09 | 1.07 | 1.34 | 1.20 | | | -0.14 | -10.11 |
| Egypt | 0.06 | 0.06 | 0.06 | 3.20 | 3.20 | 3.20 | 0.21 | 0.21 | 0.21 | | | 0.00 | 0.00 |
| Central African Republic | 0.10 | 0.10 | 0.10 | 1.50 | 1.50 | 1.50 | 0.15 | 0.15 | 0.15 | | | 0.00 | 0.00 |
| South Africa | 0.04 | 0.05 | 0.05 | 2.21 | 2.22 | 2.22 | 0.09 | 0.10 | 0.10 | | | 0.00 | 0.00 |
| Mozambique | 0.35 | 0.38 | 0.38 | 0.30 | 0.34 | 0.34 | 0.10 | 0.13 | 0.13 | | | 0.00 | 0.00 |
| Cote d'Ivoire | 0.16 | 0.15 | 0.15 | 1.40 | 1.45 | 1.45 | 0.23 | 0.21 | 0.21 | | | 0.00 | 0.00 |
| Benin | 0.17 | 0.19 | 0.19 | 1.01 | 0.92 | 0.92 | 0.18 | 0.18 | 0.18 | | | 0.00 | 0.00 |
| South Asia | | | | | | | | | | | | | |
| India | 6.02 | 5.60 | 5.80 | 1.11 | 1.21 | 1.21 | 6.70 | 6.80 | 7.00 | | | 0.20 | 2.94 |
| Pakistan | 0.14 | 0.10 | 0.10 | 0.89 | 0.92 | 0.91 | 0.12 | 0.09 | 0.09 | | | 0.00 | 1.11 |
| Southeast Asia | | | | | | | | | | | | | |
| Indonesia | 0.55 | 0.55 | 0.54 | 1.78 | 1.76 | 1.76 | 0.97 | 0.96 | 0.95 | | | -0.01 | -1.04 |
| Burma | 1.06 | 1.06 | 1.07 | 1.48 | 1.51 | 1.55 | 1.56 | 1.60 | 1.65 | | | 0.05 | 3.13 |
| Vietnam | 0.17 | 0.16 | 0.16 | 2.50 | 2.50 | 2.50 | 0.41 | 0.40 | 0.39 | | | -0.01 | -3.00 |
| Thailand | 0.02 | 0.02 | 0.02 | 1.67 | 1.67 | 1.67 | 0.04 | 0.04 | 0.04 | | | 0.00 | 0.00 |
| South America | | | | | | | | | | | | | |
| Argentina | 0.40 | 0.41 | 0.38 | 3.16 | 3.21 | 3.29 | 1.27 | 1.30 | 1.25 | | | -0.05 | -3.85 |
| Brazil | 0.17 | 0.20 | 0.21 | 3.86 | 3.68 | 3.66 | 0.64 | 0.72 | 0.75 | | | 0.03 | 4.46 |
| Mexico | 0.06 | 0.05 | 0.05 | 1.73 | 1.74 | 1.74 | 0.10 | 0.09 | 0.09 | | | 0.00 | 0.00 |
| Others | 1.78 | 1.90 | 1.85 | 1.15 | 1.18 | 1.16 | 2.05 | 2.24 | 2.15 | | | -0.09 | -3.98 |

Table 14 Sunflowerseed Area, Yield, and Production

| Country / Region | Area (Million hectares) | | | Yield (Metric tons per hectare) | | | Production (Million metric tons) | | | Change in Production | | | |
|---------------------------------|----------------------------|------------------|----------------------|------------------------------------|------------------|----------------------|-------------------------------------|------------------|----------------------|------------------------|---------|-----------------------|---------|
| | 2020/21 | Prel. 2021/22 | 2022/23 Proj. May | 2020/21 | Prel. 2021/22 | 2022/23 Proj. May | 2020/21 | Prel. 2021/22 | 2022/23 Proj. May | From last month MMT | Percent | From last year MMT | Percent |
| World | 26.94 | 28.85 | 26.52 | 1.83 | 1.99 | 1.91 | 49.25 | 57.38 | 50.72 | | | -6.66 | -11.60 |
| United States | 0.67 | 0.50 | 0.55 | 2.01 | 1.72 | 1.93 | 1.35 | 0.86 | 1.06 | | | 0.20 | 22.83 |
| Total Foreign | 26.27 | 28.34 | 25.97 | 1.82 | 1.99 | 1.91 | 47.90 | 56.52 | 49.66 | | | -6.85 | -12.13 |
| Former Soviet Union - 12 | | | | | | | | | | | | | |
| Russia | 8.35 | 9.61 | 8.70 | 1.59 | 1.62 | 1.67 | 13.27 | 15.57 | 14.50 | | | -1.07 | -6.88 |
| Ukraine | 7.00 | 7.10 | 5.30 | 2.01 | 2.46 | 2.08 | 14.10 | 17.50 | 11.00 | | | -6.50 | -37.14 |
| Kazakhstan | 0.75 | 0.94 | 0.90 | 1.13 | 1.10 | 1.11 | 0.84 | 1.03 | 1.00 | | | -0.03 | -3.10 |
| European Union | 4.45 | 4.50 | 4.55 | 2.00 | 2.32 | 2.31 | 8.92 | 10.43 | 10.50 | | | 0.07 | 0.65 |
| South America | | | | | | | | | | | | | |
| Argentina | 1.67 | 1.60 | 2.00 | 2.05 | 2.09 | 2.10 | 3.43 | 3.35 | 4.20 | | | 0.85 | 25.37 |
| Uruguay | 0.07 | 0.07 | 0.08 | 1.69 | 1.62 | 1.71 | 0.11 | 0.11 | 0.13 | | | 0.02 | 16.36 |
| Bolivia | 0.13 | 0.13 | 0.12 | 1.20 | 1.30 | 1.23 | 0.15 | 0.16 | 0.15 | | | -0.02 | -9.76 |
| Brazil | 0.03 | 0.04 | 0.04 | 1.13 | 1.62 | 1.60 | 0.04 | 0.06 | 0.06 | | | 0.00 | 6.67 |
| Paraguay | 0.03 | 0.03 | 0.03 | 1.53 | 1.55 | 1.56 | 0.05 | 0.05 | 0.05 | | | 0.00 | 4.17 |
| China | 0.87 | 1.10 | 1.00 | 2.94 | 2.64 | 2.80 | 2.57 | 2.90 | 2.80 | | | -0.10 | -3.45 |
| South Asia | | | | | | | | | | | | | |
| India | 0.23 | 0.25 | 0.25 | 0.82 | 0.76 | 0.78 | 0.19 | 0.19 | 0.20 | | | 0.01 | 2.63 |
| Pakistan | 0.15 | 0.15 | 0.15 | 1.07 | 1.00 | 1.03 | 0.16 | 0.15 | 0.16 | | | 0.01 | 3.33 |
| Middle East | | | | | | | | | | | | | |
| Turkey | 0.72 | 0.76 | 0.79 | 2.17 | 2.30 | 2.34 | 1.56 | 1.75 | 1.85 | | | 0.10 | 5.71 |
| Iran | 0.04 | 0.04 | 0.04 | 1.08 | 1.00 | 1.02 | 0.04 | 0.04 | 0.04 | | | 0.00 | 0.00 |
| Israel | 0.00 | 0.00 | 0.00 | 9.00 | 7.00 | 6.00 | 0.01 | 0.01 | 0.01 | | | 0.01 | 71.43 |
| Africa | | | | | | | | | | | | | |
| Egypt | 0.01 | 0.01 | 0.01 | 2.38 | 2.38 | 2.50 | 0.02 | 0.02 | 0.03 | | | 0.01 | 31.58 |
| Morocco | 0.02 | 0.02 | 0.02 | 1.16 | 1.25 | 1.11 | 0.02 | 0.03 | 0.02 | | | -0.01 | -20.00 |
| South Africa | 0.48 | 0.68 | 0.69 | 1.42 | 1.44 | 1.50 | 0.68 | 0.97 | 1.03 | | | 0.06 | 6.19 |
| Burma | 0.60 | 0.60 | 0.60 | 0.65 | 0.65 | 0.65 | 0.39 | 0.39 | 0.39 | | | 0.00 | 0.00 |
| Canada | 0.05 | 0.04 | 0.05 | 2.24 | 2.05 | 2.20 | 0.10 | 0.08 | 0.11 | | | 0.03 | 34.15 |
| Australia | 0.02 | 0.02 | 0.02 | 1.50 | 1.67 | 1.22 | 0.03 | 0.03 | 0.02 | | | -0.01 | -26.67 |
| Others | 0.62 | 0.67 | 0.64 | 1.98 | 2.54 | 2.23 | 1.23 | 1.69 | 1.42 | | | -0.27 | -16.09 |

World and Selected Countries and Regions

Table 15 Rapeseed Area, Yield, and Production

| Country / Region | Area (Million hectares) | | | Yield (Metric tons per hectare) | | | Production (Million metric tons) | | | Change in Production | | | |
|---------------------------------|----------------------------|------------------|----------------------|------------------------------------|------------------|----------------------|-------------------------------------|------------------|----------------------|------------------------|---------|-----------------------|---------|
| | 2020/21 | Prel. 2021/22 | 2022/23 Proj. May | 2020/21 | Prel. 2021/22 | 2022/23 Proj. May | 2020/21 | Prel. 2021/22 | 2022/23 Proj. May | From last month MMT | Percent | From last year MMT | Percent |
| World | 34.86 | 37.73 | 38.73 | 2.11 | 1.89 | 2.07 | 73.59 | 71.18 | 80.32 | | | 9.14 | 12.84 |
| United States | 0.73 | 0.85 | 0.85 | 2.16 | 1.46 | 2.10 | 1.58 | 1.24 | 1.78 | | | 0.54 | 43.25 |
| Total Foreign | 34.13 | 36.88 | 37.89 | 2.11 | 1.90 | 2.07 | 72.02 | 69.94 | 78.54 | | | 8.60 | 12.30 |
| European Union | 5.32 | 5.40 | 5.80 | 3.14 | 3.20 | 3.19 | 16.73 | 17.27 | 18.50 | | | 1.24 | 7.15 |
| United Kingdom | 0.38 | 0.31 | 0.36 | 2.73 | 3.20 | 3.33 | 1.04 | 0.98 | 1.20 | | | 0.22 | 22.32 |
| Switzerland | 0.02 | 0.02 | 0.02 | 3.14 | 3.14 | 3.14 | 0.07 | 0.07 | 0.07 | | | 0.00 | 0.00 |
| Canada | 8.33 | 9.01 | 8.60 | 2.34 | 1.40 | 2.33 | 19.49 | 12.60 | 20.00 | | | 7.40 | 58.73 |
| China | 6.77 | 6.80 | 7.10 | 2.08 | 2.06 | 2.07 | 14.05 | 14.00 | 14.70 | | | 0.70 | 5.00 |
| South Asia | | | | | | | | | | | | | |
| India | 6.70 | 8.30 | 8.60 | 1.27 | 1.30 | 1.28 | 8.50 | 10.80 | 11.00 | | | 0.20 | 1.85 |
| Pakistan | 0.45 | 0.30 | 0.35 | 1.02 | 1.37 | 1.33 | 0.46 | 0.41 | 0.47 | | | 0.06 | 13.41 |
| Bangladesh | 0.25 | 0.25 | 0.25 | 0.92 | 0.92 | 0.92 | 0.23 | 0.23 | 0.23 | | | 0.00 | 0.00 |
| Former Soviet Union - 12 | | | | | | | | | | | | | |
| Russia | 1.45 | 1.62 | 1.60 | 1.77 | 1.71 | 1.75 | 2.57 | 2.78 | 2.80 | | | 0.03 | 0.90 |
| Ukraine | 1.19 | 1.04 | 1.30 | 2.31 | 2.91 | 2.46 | 2.75 | 3.02 | 3.20 | | | 0.19 | 6.14 |
| Belarus | 0.36 | 0.32 | 0.33 | 2.06 | 1.59 | 1.69 | 0.73 | 0.50 | 0.55 | | | 0.05 | 10.00 |
| Kazakhstan | 0.12 | 0.12 | 0.19 | 1.23 | 1.24 | 1.22 | 0.15 | 0.15 | 0.23 | | | 0.08 | 54.11 |
| Australia | 2.45 | 3.05 | 3.00 | 1.84 | 2.08 | 1.57 | 4.50 | 6.35 | 4.70 | | | -1.65 | -25.98 |
| South America | | | | | | | | | | | | | |
| Chile | 0.04 | 0.04 | 0.04 | 3.81 | 4.00 | 4.00 | 0.14 | 0.14 | 0.16 | | | 0.02 | 14.29 |
| Paraguay | 0.05 | 0.04 | 0.05 | 1.41 | 1.45 | 1.51 | 0.07 | 0.06 | 0.07 | | | 0.00 | 6.25 |
| Ethiopia | 0.03 | 0.03 | 0.03 | 1.80 | 1.80 | 1.80 | 0.05 | 0.05 | 0.05 | | | 0.00 | 0.00 |
| Others | 0.24 | 0.25 | 0.28 | 2.14 | 2.15 | 2.21 | 0.50 | 0.55 | 0.63 | | | 0.08 | 14.86 |

World and Selected Countries and Regions

Table 16 Copra, Palm Kernel, and Palm Oil Production

| Country / Region | Production (Million metric tons) | | | Change in Production | | | |
|-----------------------------|-------------------------------------|------------------|----------------------|----------------------|---------|----------------|---------|
| | 2020/21 | Prel. 2021/22 | 2022/23 Proj. May | From last month | | From last year | |
| | | | | MMT | Percent | MMT | Percent |
| Oilseed, Copra | | | | | | | |
| Philippines | 2.40 | 2.60 | 2.60 | | | 0.00 | 0.00 |
| Indonesia | 1.67 | 1.68 | 1.68 | | | 0.00 | 0.00 |
| India | 0.75 | 0.79 | 0.80 | | | 0.01 | 1.27 |
| Vietnam | 0.28 | 0.29 | 0.29 | | | 0.00 | 0.00 |
| Papua New Guinea | 0.11 | 0.11 | 0.11 | | | 0.00 | 0.00 |
| Thailand | 0.07 | 0.07 | 0.07 | | | 0.00 | 0.00 |
| Sri Lanka | 0.07 | 0.07 | 0.07 | | | 0.00 | 0.00 |
| Mexico | 0.04 | 0.05 | 0.04 | | | -0.01 | -20.00 |
| Solomon Islands | 0.03 | 0.03 | 0.03 | | | 0.00 | 0.00 |
| Cote d'Ivoire | 0.03 | 0.03 | 0.03 | | | 0.00 | 0.00 |
| World | 5.59 | 5.86 | 5.86 | | | 0.00 | 0.00 |
| Oilseed, Palm Kernel | | | | | | | |
| Indonesia | 11.46 | 12.00 | 12.12 | | | 0.12 | 1.00 |
| Malaysia | 4.34 | 4.65 | 4.95 | | | 0.30 | 6.45 |
| Nigeria | 0.82 | 0.90 | 0.90 | | | 0.00 | 0.00 |
| Thailand | 0.79 | 0.83 | 0.86 | | | 0.03 | 3.61 |
| Colombia | 0.29 | 0.31 | 0.34 | | | 0.03 | 9.68 |
| Guatemala | 0.17 | 0.18 | 0.18 | | | 0.00 | 0.00 |
| Papua New Guinea | 0.16 | 0.17 | 0.17 | | | 0.01 | 6.25 |
| Honduras | 0.13 | 0.16 | 0.16 | | | 0.00 | 0.00 |
| Brazil | 0.14 | 0.15 | 0.15 | | | 0.01 | 7.14 |
| Cameroon | 0.15 | 0.15 | 0.15 | | | 0.00 | 0.00 |
| World | 19.03 | 20.05 | 20.56 | | | 0.51 | 2.54 |
| Oil, Palm | | | | | | | |
| Indonesia | 43.50 | 45.50 | 46.50 | | | 1.00 | 2.20 |
| Malaysia | 17.85 | 19.00 | 19.80 | | | 0.80 | 4.21 |
| Thailand | 2.96 | 3.15 | 3.26 | | | 0.11 | 3.49 |
| Colombia | 1.56 | 1.75 | 1.84 | | | 0.09 | 5.14 |
| Nigeria | 1.28 | 1.40 | 1.40 | | | 0.00 | 0.00 |
| Guatemala | 0.87 | 0.88 | 0.91 | | | 0.03 | 3.41 |
| Papua New Guinea | 0.60 | 0.63 | 0.65 | | | 0.03 | 4.84 |
| Honduras | 0.45 | 0.60 | 0.60 | | | 0.00 | 0.00 |
| Brazil | 0.55 | 0.55 | 0.57 | | | 0.02 | 3.64 |
| Cote d'Ivoire | 0.52 | 0.52 | 0.52 | | | 0.00 | 0.00 |
| World | 73.13 | 76.95 | 79.13 | | | 2.18 | 2.83 |

World and Selected Countries and Regions

Table 17 Cotton Area, Yield, and Production

| Country / Region | Area (Million hectares) | | | Yield (Kilograms per hectare) | | | Production (Million 480 lb. bales) | | | Change in Production | | | |
|---------------------------------|----------------------------|------------------|----------------------|----------------------------------|------------------|----------------------|---------------------------------------|------------------|----------------------|---------------------------|---------|--------------------------|---------|
| | 2020/21 | Prel. 2021/22 | 2022/23 Proj. May | 2020/21 | Prel. 2021/22 | 2022/23 Proj. May | 2020/21 | Prel. 2021/22 | 2022/23 Proj. May | From last month MBales | Percent | From last year MBales | Percent |
| World | 31.42 | 32.25 | 32.93 | 773 | 800 | 800 | 111.48 | 118.45 | 121.06 | | | 2.62 | 2.21 |
| United States | 3.33 | 4.16 | 3.70 | 957 | 918 | 972 | 14.61 | 17.52 | 16.50 | | | -1.02 | -5.84 |
| Total Foreign | 28.10 | 28.09 | 29.23 | 751 | 782 | 779 | 96.87 | 100.92 | 104.56 | | | 3.64 | 3.60 |
| South Asia | | | | | | | | | | | | | |
| India | 13.29 | 12.15 | 12.70 | 452 | 457 | 471 | 27.60 | 25.50 | 27.50 | | | 2.00 | 7.84 |
| Pakistan | 2.20 | 2.00 | 2.20 | 445 | 653 | 614 | 4.50 | 6.00 | 6.20 | | | 0.20 | 3.33 |
| China | 3.25 | 3.10 | 3.15 | 1,976 | 1,896 | 1,901 | 29.50 | 27.00 | 27.50 | | | 0.50 | 1.85 |
| South America | | | | | | | | | | | | | |
| Brazil | 1.37 | 1.60 | 1.60 | 1,720 | 1,796 | 1,796 | 10.82 | 13.20 | 13.20 | | | 0.00 | 0.00 |
| Argentina | 0.41 | 0.48 | 0.43 | 717 | 680 | 692 | 1.35 | 1.50 | 1.35 | | | -0.15 | -10.00 |
| Paraguay | 0.01 | 0.01 | 0.01 | 416 | 416 | 416 | 0.02 | 0.02 | 0.02 | | | 0.00 | 0.00 |
| Africa | | | | | | | | | | | | | |
| Burkina Faso | 0.56 | 0.60 | 0.65 | 372 | 362 | 352 | 0.95 | 0.99 | 1.05 | | | 0.06 | 6.06 |
| Mali | 0.17 | 0.72 | 0.74 | 396 | 432 | 427 | 0.30 | 1.43 | 1.45 | | | 0.02 | 1.40 |
| Cote d'Ivoire | 0.45 | 0.47 | 0.46 | 494 | 486 | 473 | 1.01 | 1.05 | 1.00 | | | -0.05 | -4.76 |
| Benin | 0.62 | 0.64 | 0.65 | 513 | 510 | 502 | 1.45 | 1.50 | 1.50 | | | 0.00 | 0.00 |
| Egypt | 0.07 | 0.09 | 0.10 | 720 | 717 | 697 | 0.22 | 0.28 | 0.32 | | | 0.04 | 14.29 |
| Cameroon | 0.23 | 0.23 | 0.24 | 658 | 691 | 590 | 0.68 | 0.73 | 0.65 | | | -0.08 | -10.96 |
| Tanzania | 0.17 | 0.24 | 0.35 | 284 | 231 | 218 | 0.22 | 0.26 | 0.35 | | | 0.10 | 37.25 |
| Nigeria | 0.27 | 0.27 | 0.27 | 282 | 282 | 282 | 0.35 | 0.35 | 0.35 | | | 0.00 | 0.00 |
| Zimbabwe | 0.24 | 0.21 | 0.21 | 318 | 207 | 249 | 0.35 | 0.20 | 0.24 | | | 0.04 | 20.00 |
| Ethiopia | 0.08 | 0.08 | 0.08 | 637 | 637 | 637 | 0.24 | 0.24 | 0.24 | | | 0.00 | 0.00 |
| Former Soviet Union - 12 | | | | | | | | | | | | | |
| Uzbekistan | 1.06 | 1.06 | 1.07 | 647 | 565 | 610 | 3.15 | 2.75 | 3.00 | | | 0.25 | 9.09 |
| Turkmenistan | 0.55 | 0.55 | 0.55 | 368 | 356 | 356 | 0.92 | 0.90 | 0.90 | | | 0.00 | 0.00 |
| Tajikistan | 0.16 | 0.17 | 0.17 | 619 | 640 | 640 | 0.46 | 0.50 | 0.50 | | | 0.00 | 0.00 |
| Kazakhstan | 0.11 | 0.12 | 0.12 | 534 | 502 | 521 | 0.27 | 0.27 | 0.28 | | | 0.01 | 3.77 |
| Middle East | | | | | | | | | | | | | |
| Turkey | 0.35 | 0.45 | 0.53 | 1,804 | 1,839 | 1,783 | 2.90 | 3.80 | 4.30 | | | 0.50 | 13.16 |
| Syria | 0.03 | 0.03 | 0.03 | 1,219 | 1,132 | 1,132 | 0.14 | 0.13 | 0.13 | | | 0.00 | 0.00 |
| Iran | 0.10 | 0.10 | 0.10 | 871 | 871 | 871 | 0.40 | 0.40 | 0.40 | | | 0.00 | 0.00 |
| Australia | 0.28 | 0.60 | 0.55 | 2,217 | 1,996 | 2,177 | 2.80 | 5.50 | 5.50 | | | 0.00 | 0.00 |
| Mexico | 0.15 | 0.15 | 0.19 | 1,532 | 1,725 | 1,518 | 1.02 | 1.22 | 1.33 | | | 0.11 | 8.61 |
| Burma | 0.24 | 0.25 | 0.25 | 635 | 644 | 644 | 0.70 | 0.73 | 0.73 | | | 0.00 | 0.00 |
| Others | 1.73 | 1.74 | 1.86 | 575 | 561 | 538 | 4.57 | 4.49 | 4.58 | | | 0.10 | 2.18 |

World and Selected Countries and Regions

TABLE 18

The table below presents a record of the May projection and the final Estimate. Using world wheat production as an example, the "root mean square error" means that chances are 2 out of 3 that the current forecast will not be above or below the final estimate by more than 3.1 percent. Chances are 9 out of 10 (90% confidence level) that the difference will not exceed 5.1 percent. The average difference between the May projection and the final estimate is 16.1 million tons, ranging from 1.7 million to 35 million tons. The May projection has been below the estimate 24 times and above 17 times.

RELIABILITY OF PRODUCTION PROJECTIONS 1/

| COMMODITY AND REGION | Root mean square error | 90 percent confidence interval | Difference between forecast and final estimate | | | | | |
|-------------------------|-----------------------------|--------------------------------------|--|----------|---------|----------------|----------------|----|
| | | | Average | Smallest | Largest | Years | | |
| | | | | | | Below final | Above final | |
| WHEAT | Percent | | ---Million metric tons--- | | | | | |
| | World | 3.1 | 5.1 | 16.1 | 1.7 | 35.0 | 24 | 17 |
| | U.S. | 6.8 | 11.5 | 3.0 | 0.0 | 9.8 | 21 | 20 |
| | Foreign | 3.2 | 5.4 | 14.9 | 1.6 | 32.9 | 23 | 18 |
| COARSE GRAINS 2/ | World | 3.6 | 6.1 | 26.3 | 1.1 | 103.6 | 20 | 21 |
| | U.S. | 13.7 | 23.1 | 21.1 | 0.9 | 103.8 | 22 | 19 |
| | Foreign | 2.7 | 4.5 | 14.3 | 0.2 | 42.8 | 20 | 21 |
| RICE (Milled) | World | 2.3 | 4.0 | 6.8 | 0.0 | 21.8 | 25 | 16 |
| | U.S. | 7.9 | 13.3 | 0.4 | 0.0 | 1.1 | 22 | 19 |
| | Foreign | 2.4 | 4.0 | 6.8 | 0.4 | 22.0 | 25 | 16 |
| SOYBEANS | World | NA | NA | 12.5 | 0.4 | 34.8 | 7 | 6 |
| | U.S. | 8.9 | 15.0 | 4.7 | 0.0 | 16.1 | 22 | 19 |
| | Foreign | NA | NA | 8.5 | 0.2 | 35.6 | 8 | 5 |
| COTTON | ---Million 480-lb. bales--- | | | | | | | |
| | World | 6.1 | 10.3 | 4.3 | 0.1 | 16.7 | 24 | 17 |
| | U.S. | 12.0 | 20.2 | 1.6 | 0.1 | 5.5 | 20 | 21 |
| | Foreign | 6.1 | 10.3 | 3.3 | 0.1 | 12.2 | 22 | 19 |
| UNITED STATES | -----Million bushels----- | | | | | | | |
| | CORN | 14.6 | 24.6 | 756 | 8 | 4,010 | 18 | 23 |
| | SORGHUM | 19.6 | 33.0 | 83 | 0 | 228 | 21 | 19 |
| BARLEY | 15.0 | 25.3 | 27 | 1 | 206 | 16 | 25 | |
| OATS | 25.4 | 42.7 | 30 | 1 | 231 | 9 | 32 | |

1/ Marketing years 1981/82 through 2021/22 for grains, soybeans, and cotton. Final for grains, soybeans, and cotton is defined as the first November estimate following the marketing year for 1981/82 through 2020/21, and for 2021/22 the last month's estimate.

2/ Includes corn, sorghum, barley, oats, rye, millet, and mixed grain

May 2022

Global Market Analysis, FAS, USDA