



United States  
Department of  
Agriculture

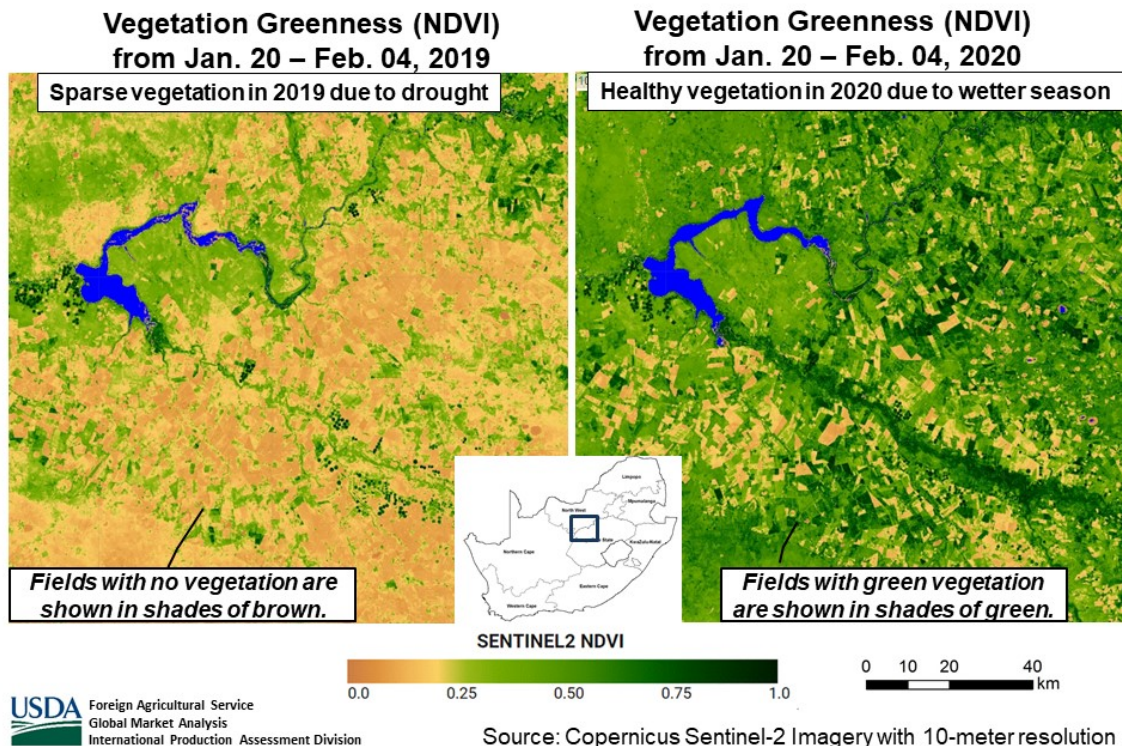
Foreign  
Agricultural  
Service

Circular Series  
WAP 2-20  
February 2020

# World Agricultural Production

## South Africa Corn: Favorable Rains Improve Crop Prospects

### Favorable Rains in 2020 Improve Crop Prospects (Bloemhof Dam, South Africa)



South Africa's 2019/20 corn production is forecast at 14.5 million metric tons (mmt), up 0.5 mmt (4 percent) from last month and 2.7 mmt (23 percent) from last year. The USDA forecast includes output from both the developing and commercial sectors, with the commercial sector accounting for approximately 97 percent of the total crop. Area is estimated at 2.9 million hectares (mha), unchanged from last month and up 0.3 mha (12 percent) from last year. Yield is forecast at 5.00 metric tons per hectare, up 4 percent from last month, up 10 percent from last year, and up 11 percent from the 5-year average.

Rainfall was below average in October which delayed planting in the eastern and central provinces, but rains improved after October and have been average to above average for most major corn

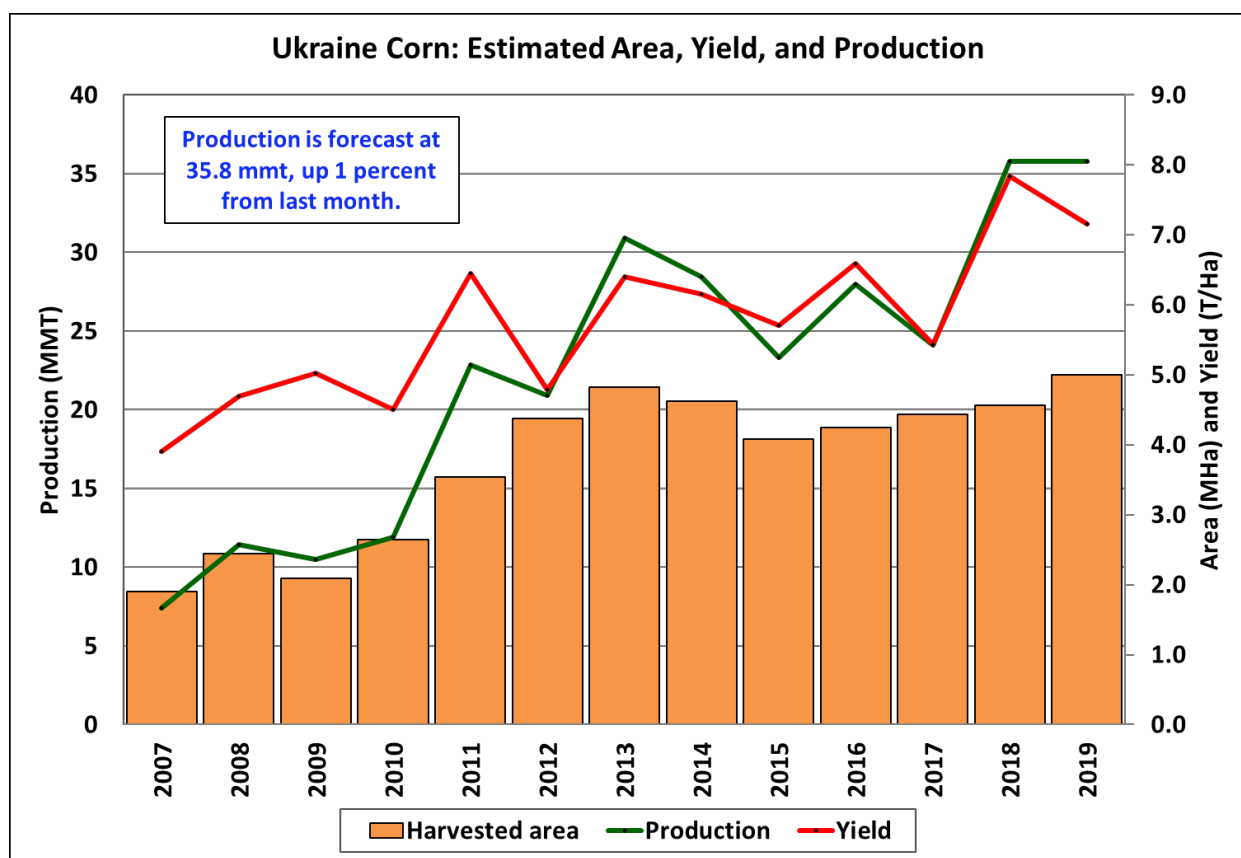
**Approved by the World Agricultural Outlook Board**

producing regions. Beneficial rains from November through January allowed farmers to achieve their planted area intentions and trend yields are expected, assuming average rains continue for the remainder of the season.

Normalized Difference Vegetation Index (NDVI) derived from Sentinel-2 and MODIS satellite imagery confirm above-average crop conditions in early February. South African farmers will harvest their corn crop from April through September. The bulk of the harvest (87 percent) is typically delivered to the silos from May through August. *(For more information, please contact [Curt.Reynolds@usda.gov](mailto:Curt.Reynolds@usda.gov).)*

### Ukraine Corn: Near Record Crop

Ukraine corn production for 2019/20 is estimated at 35.8 million metric tons, up 1 percent from last month, but slightly down from last year. Yield is estimated at 7.16 tons per hectare, down 1 percent from last month and down 9 percent from last year's record. The estimated harvested area is at 5.0 million hectares, up 2 percent from last month and 10 percent from last year.



USDA Foreign Agricultural Service  
Global Market Analysis  
International Production Assessment Division

Source: USDA PSD Online

Harvest was completed in November. The month-to-month decrease in yield and increase in area is due to preliminary harvest data from the State Statistical Service of Ukraine. Corn is grown predominantly in the Forest Steppe agroclimatic region. USDA crop production estimates for

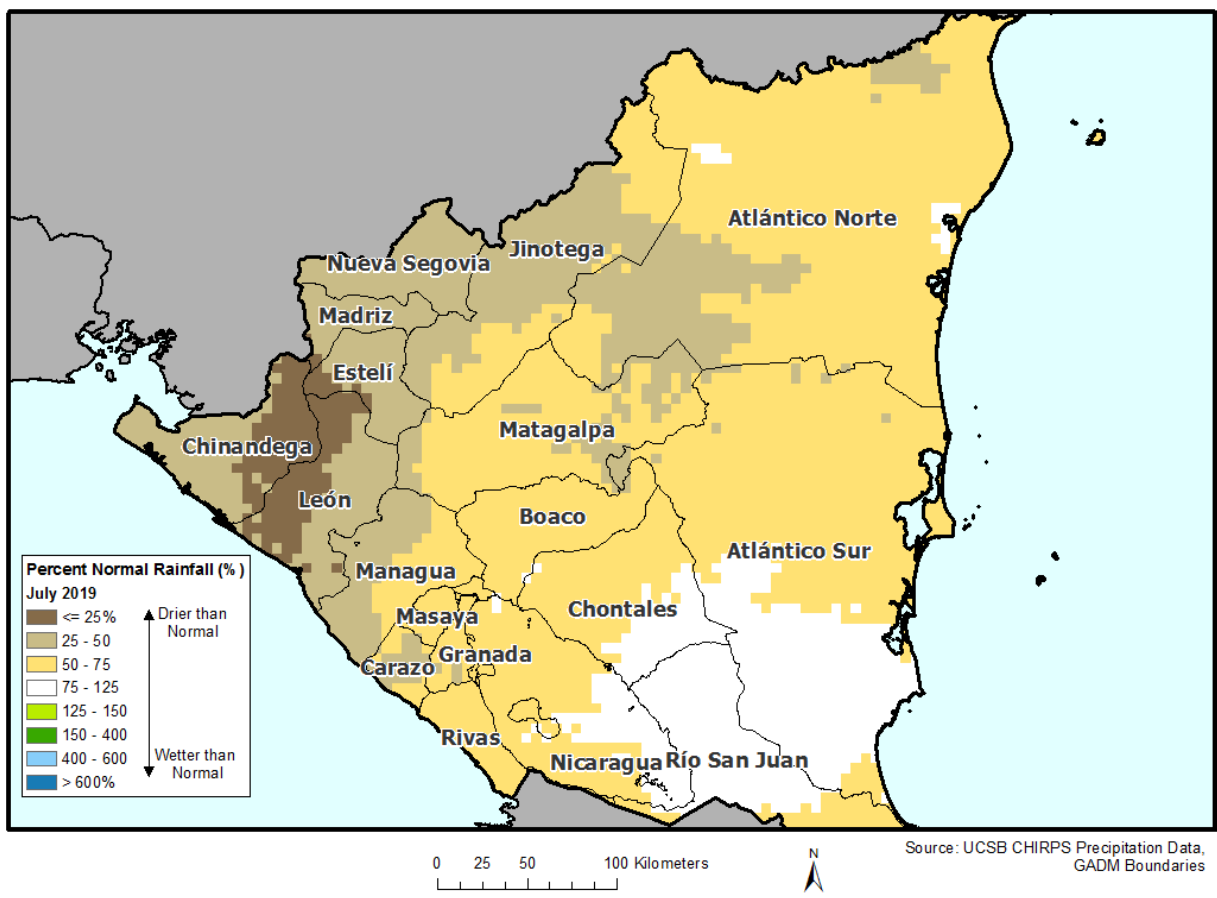
Ukraine include estimated output from Crimea. (For more information, please contact [Katie.McGaughey@usda.gov](mailto:Katie.McGaughey@usda.gov).)

### Nicaragua Rice: Production Down from Last Year Due to Dry Conditions

Nicaragua’s rough rice production for 2019/20 is estimated at 400,000 metric tons (mt), down 24,000 mt (6 percent) from last month, and down 12 percent from last year. Milled production is estimated at 264,000 mt. Area is estimated at 103,000 hectares, down about one percent from last year. Yield is estimated at 3.88 metric tons per hectare, down 11 percent from last year.

Cumulative precipitation in Nicaragua was below average in 2019. During June and July, irregular rainfall distribution negatively impacted rice crops. The dry conditions throughout the growing season reduced yields and lowered rice production. High temperatures also contributed to poor crop development.

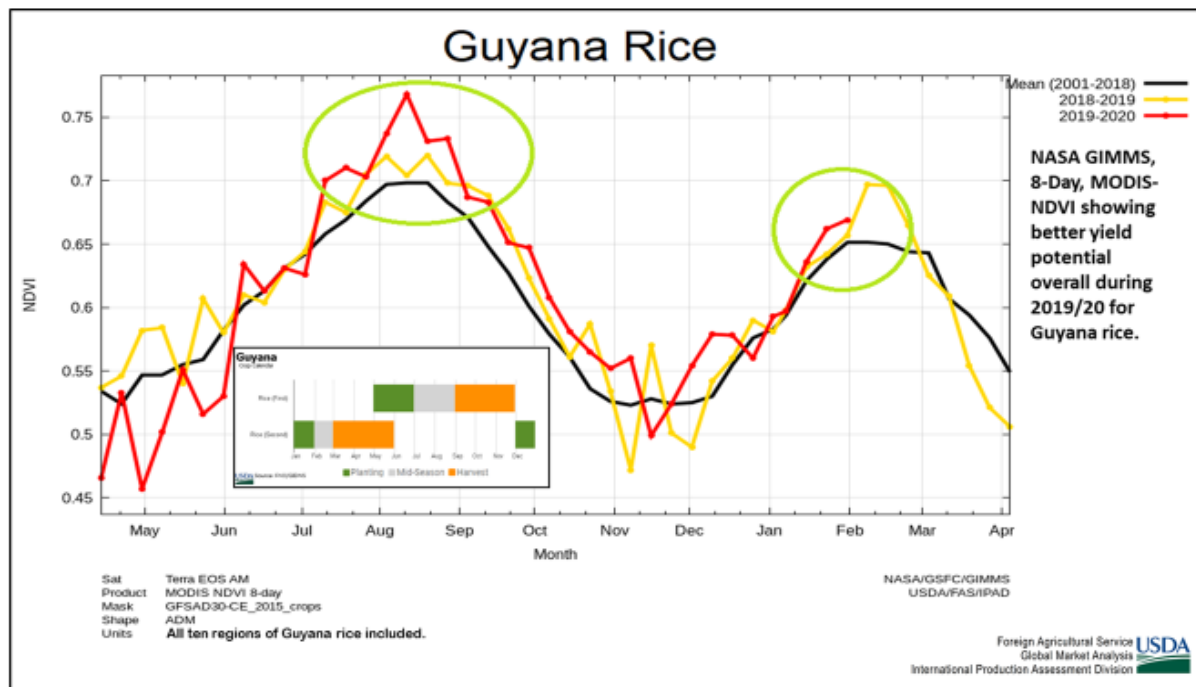
Nicaragua: Percent Normal Rainfall - July 2019



Nicaragua is the largest rice producer in Central America. Major rice producing departments in Nicaragua include Matagalpa, Boaco, Leon, Chontales, Granada, Rio San Juan, and Rivas. Nicaragua has three different rice growing cycles. The main irrigated rice is planted in January and February and harvested from April through June. The second irrigated rice is planted from July through September and harvested in November. The highlands rice is planted in June and

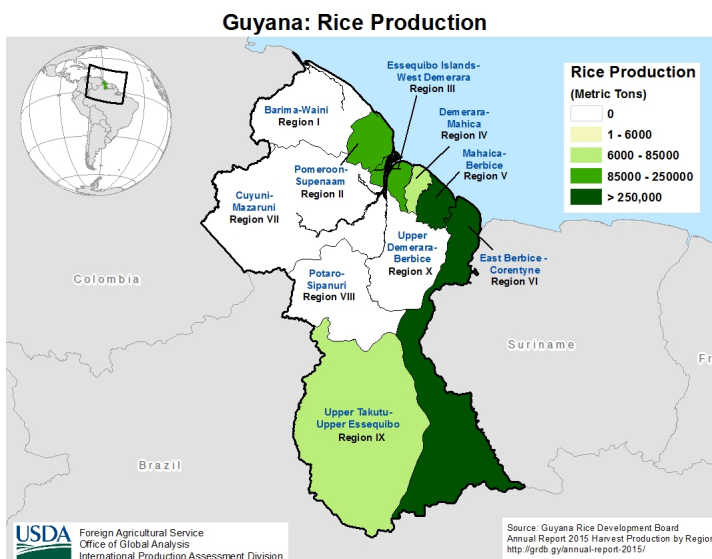
harvested in October and November. (For more information, please contact [Ifeoma.Collins@usda.gov](mailto:Ifeoma.Collins@usda.gov).)

## Guyana Rice: Second Crop Raises Production to Near Record



USDA estimates Guyana rough rice production for 2019/20 at 1.05 million metric tons (mmt), up 3 percent from last month and up 9 percent from last year. Milled rice is estimated at 683,000 metric tons. Area is estimated at 178,000 hectares, up 2 percent from last month and up 7 percent from last year. Yield is estimated at 5.90 tons per hectare, up 1 percent from last month and up 2 percent from last year.

The main-season rice is planted in June and harvested in October and the second rice crop is planted in January and harvest begins in March. The Guyana Rice Association reported that the first crop met expectations, but the second crop exceeded expectations in all regions but Region II. Typically, the second crop has more pest problems and has lower production. After launching a late spray program and employing specialists to help monitor and diagnose field problems, Guyana farmers had higher yields than expected in the second crop. Beneficial rainfall and improved water

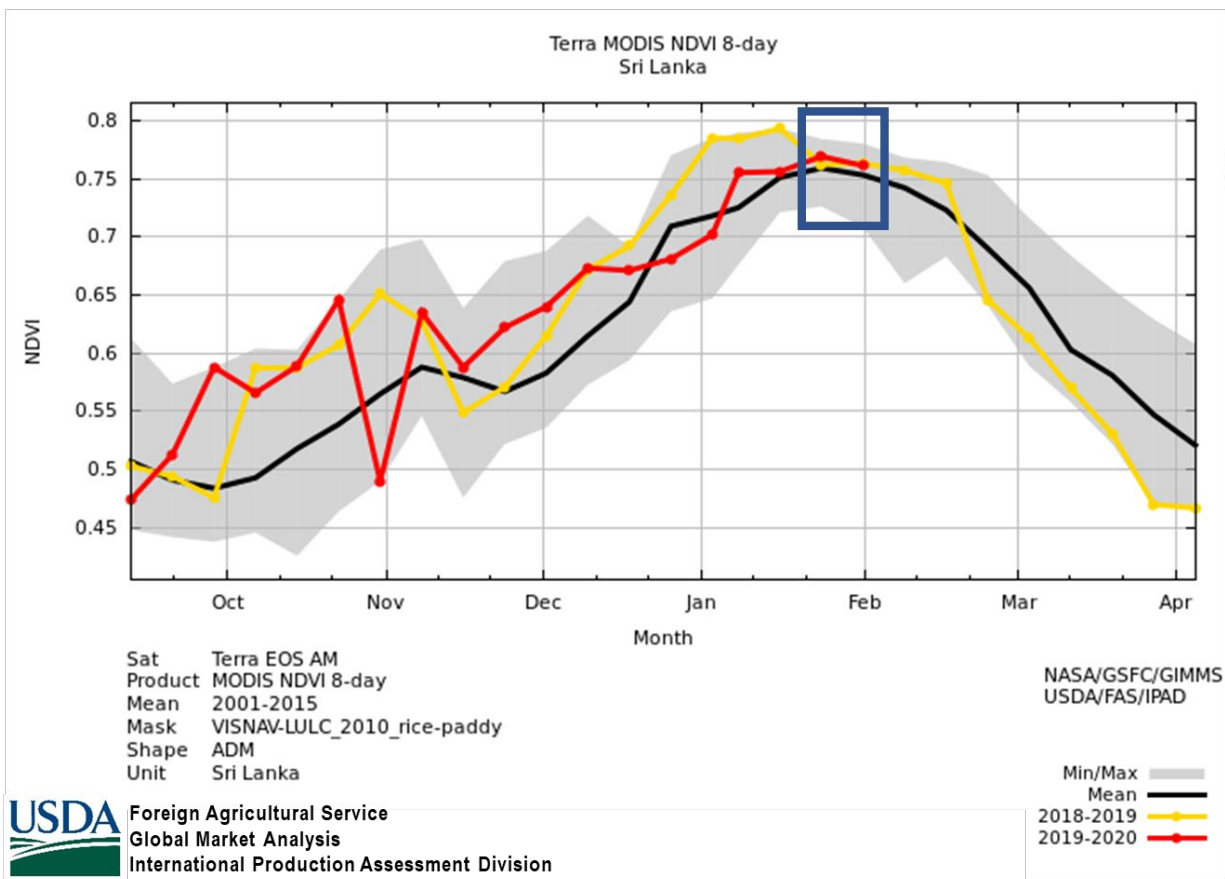


management also helped. Production for the season was close to the 2015/16 record production at almost 1.06 mmt. (For more information, please contact [Denise.McWilliams@usda.gov](mailto:Denise.McWilliams@usda.gov).)

### Sri Lanka Rice: Production Decreases due to Area Reduction

USDA forecasts 2019/20 Sri Lanka rough rice production at 4.0 million metric tons (mmt), down 11 percent from last month and 13 percent from last year. Milled rice is estimated at 2.7 mmt. The 13 percent drop in production is based on less area planted and yields returning to the 5-year average. The harvested area is forecast at 0.9 million hectares, down 10 percent from the previous forecast and down nearly 8 percent from 2018/19. This 10 percent drop in harvested area is based on area revisions from the Sri Lanka Ministry of Agriculture. Yield is forecast at 4.44 metric tons per hectare, down nearly 6 percent from 2018.

## Sri Lanka: MODIS NDVI for *Maha* Rice Production

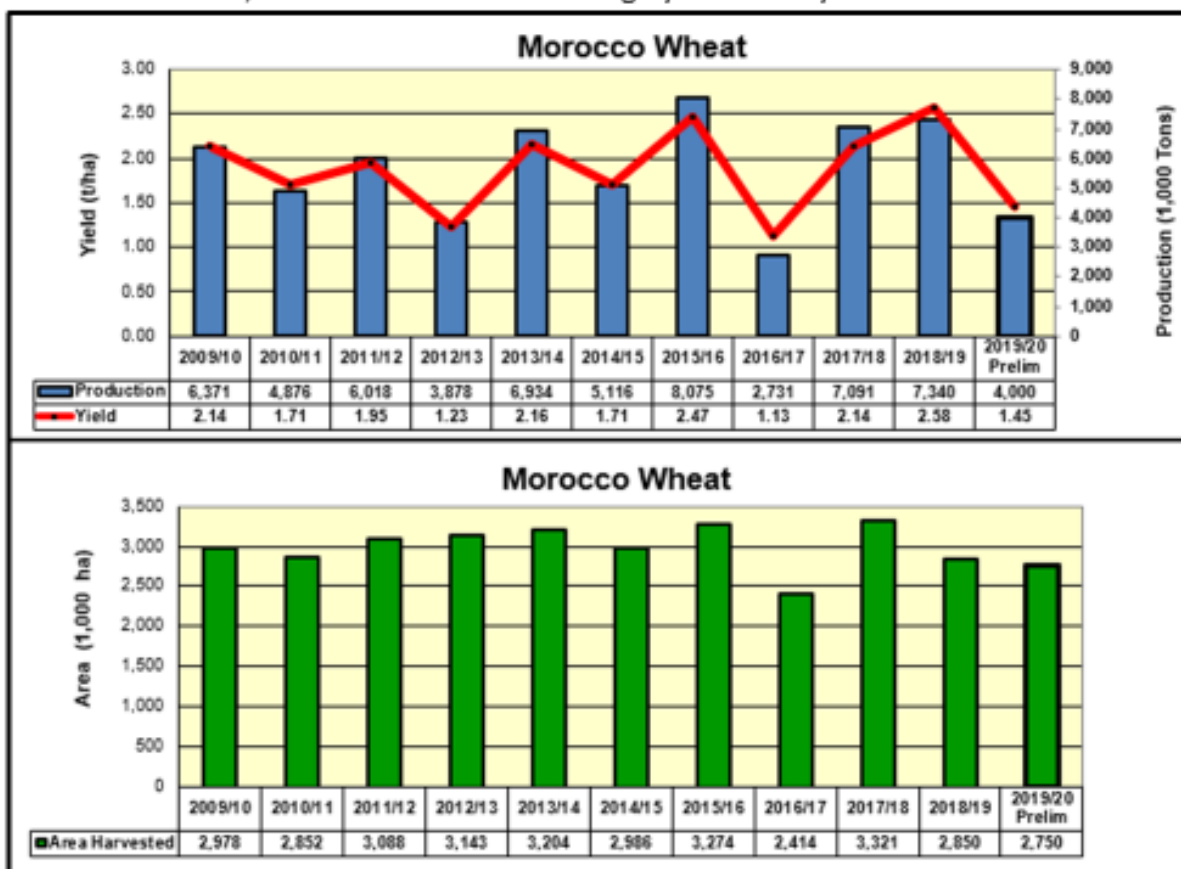


The 2019/20 *maha* season, which accounts for 60 percent of total production, is sown in October and harvested in April. Satellite-derived Normalized Difference Vegetation Index (NDVI) analysis shows average crop vigor in the main rice production areas for the *maha* crop. (For more information, please contact [Arnella.Trent@usda.gov](mailto:Arnella.Trent@usda.gov).)

## Morocco Wheat: Production Reduced 0.4 Million Metric Tons

### Morocco: Annual Crop Statistics

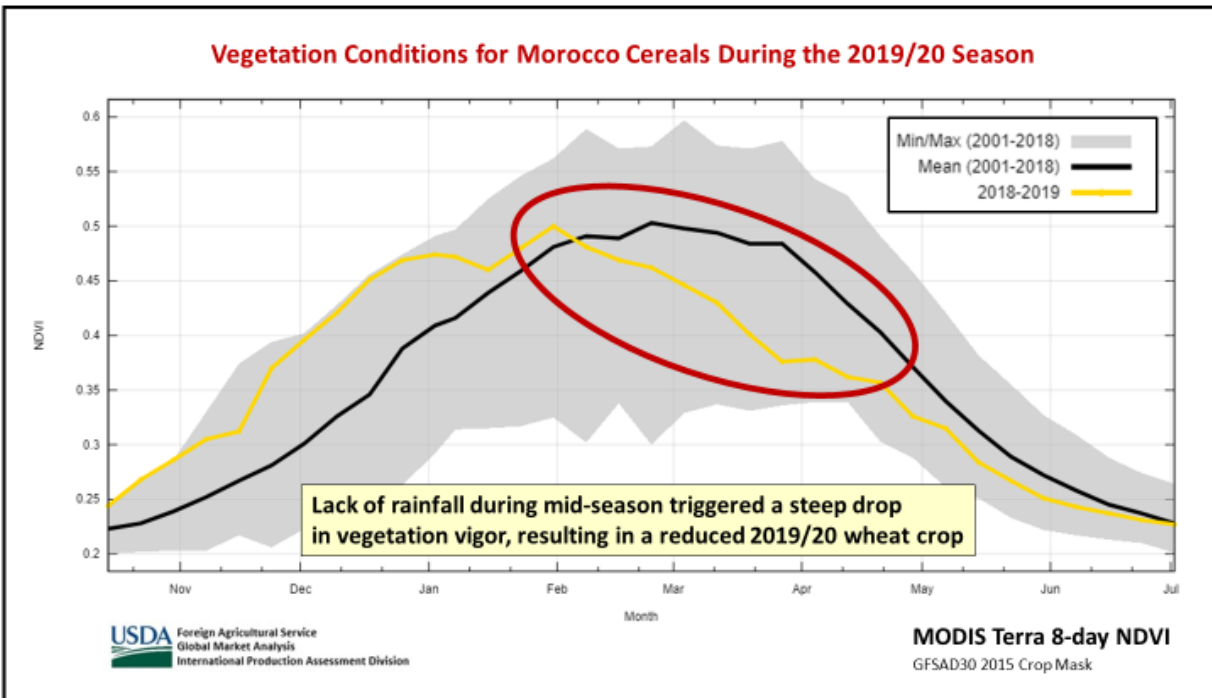
Area, Yield and Production Are Highly Affected by Rainfall



USDA Foreign Agricultural Service  
Global Market Analysis  
International Production Assessment Division

Source: USDA PSD Online

Morocco wheat production for 2019/20 is estimated at 4.0 million metric tons (mmt), down 0.4 mmt (9 percent) from last month, and down 34 percent below the 5-year average. Area is estimated at 2.75 million hectares (mha), unchanged from last month, but down 0.1 mha (4 percent) from 2018/19 and 7 percent below the 5-year average. Yield is estimated at 1.45 metric tons per hectare (mt/ha), down 9 percent from last month, down 44 percent from 2018/19, and 27 percent below the 5-year average.



The revised production estimate reflects recently released statistics from the Government of Morocco. During October and November 2018, rainfall aided crop emergence and early development. Rainfall, however, stopped in mid-November and was negligible until mid-March, when the crop had already begun to senesce. The lack of almost any late fall and winter precipitation significantly damaged the vegetative crop. The 2019/20 Morocco wheat crop was harvested during May and June 2019. The first USDA estimate of the 2020/21 crop, which was planted in autumn 2019, will be released on May 12, 2020. *(For more information, please contact [Bryan.Purcell@usda.gov](mailto:Bryan.Purcell@usda.gov).)*

### **Brazil Soybeans: Record Output Expected as Area Continues to Increase at Record Pace**

Brazil's 2019/20 soybean production is estimated at a record 125 million metric tons (mmt), up 2 mmt (2 percent) from last month and 8 mmt (7 percent) from last year. Area is estimated at a record 36.9 million hectares (mha), unchanged from last month and up 1 mha (3 percent) from last year. Yield is estimated at 3.39 tons per hectare, up 2 percent from last month, up 4 percent from last year and up 6 percent from the 5-year average. Record output is expected this year and soybean area continues to increase at a record pace. This year Brazil is also expected to overtake the United States as the world's leading soybean producer.

**Irrigated soybeans ready for harvest on January 17, 2020  
(near Primavera do Leste, Mato Grosso, Brazil)**

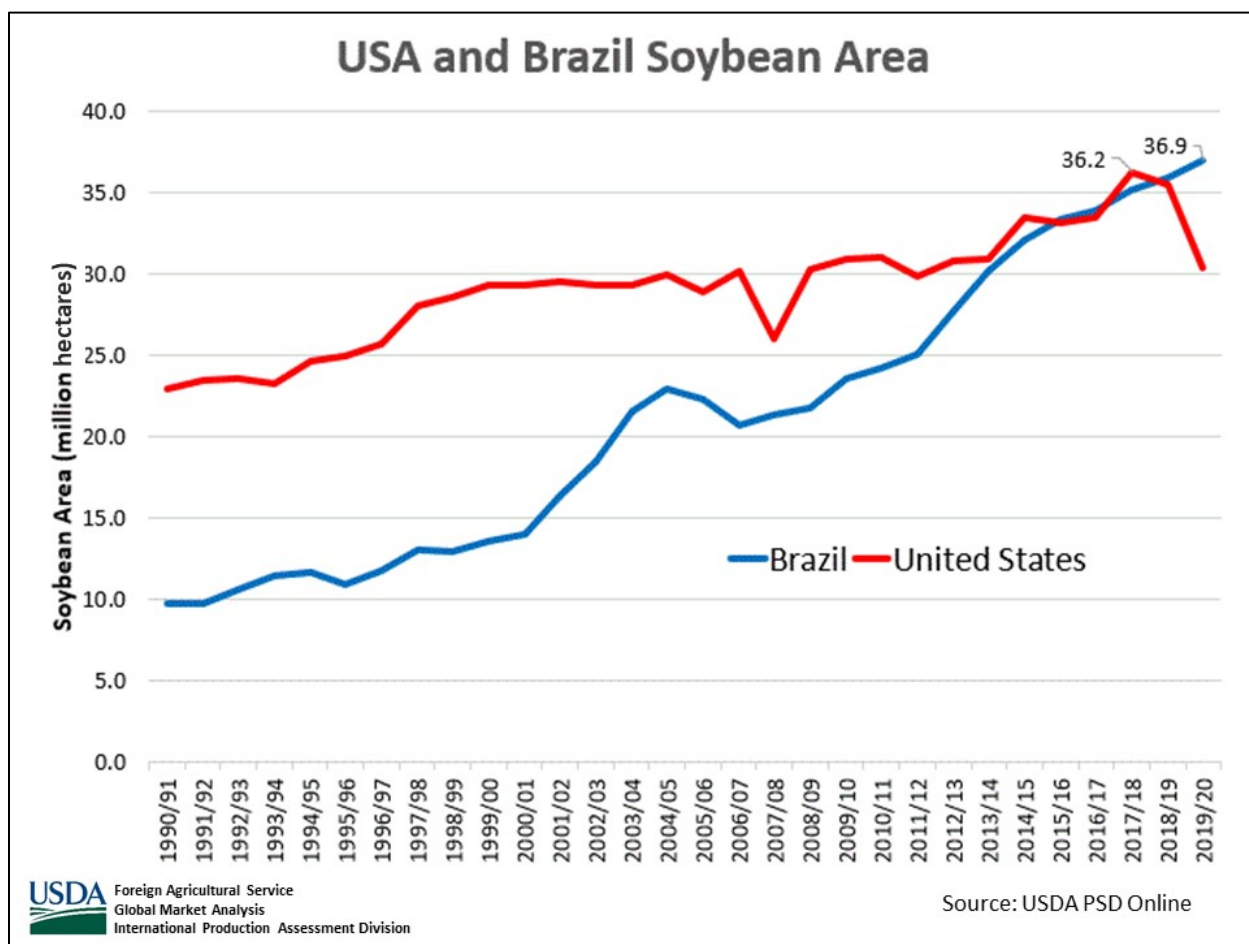


**USDA** Foreign Agricultural Service  
Global Market Analysis  
International Production Assessment Division

Source: Photo taken by USDA-FAS analyst visiting a soy/second-season cotton farm.

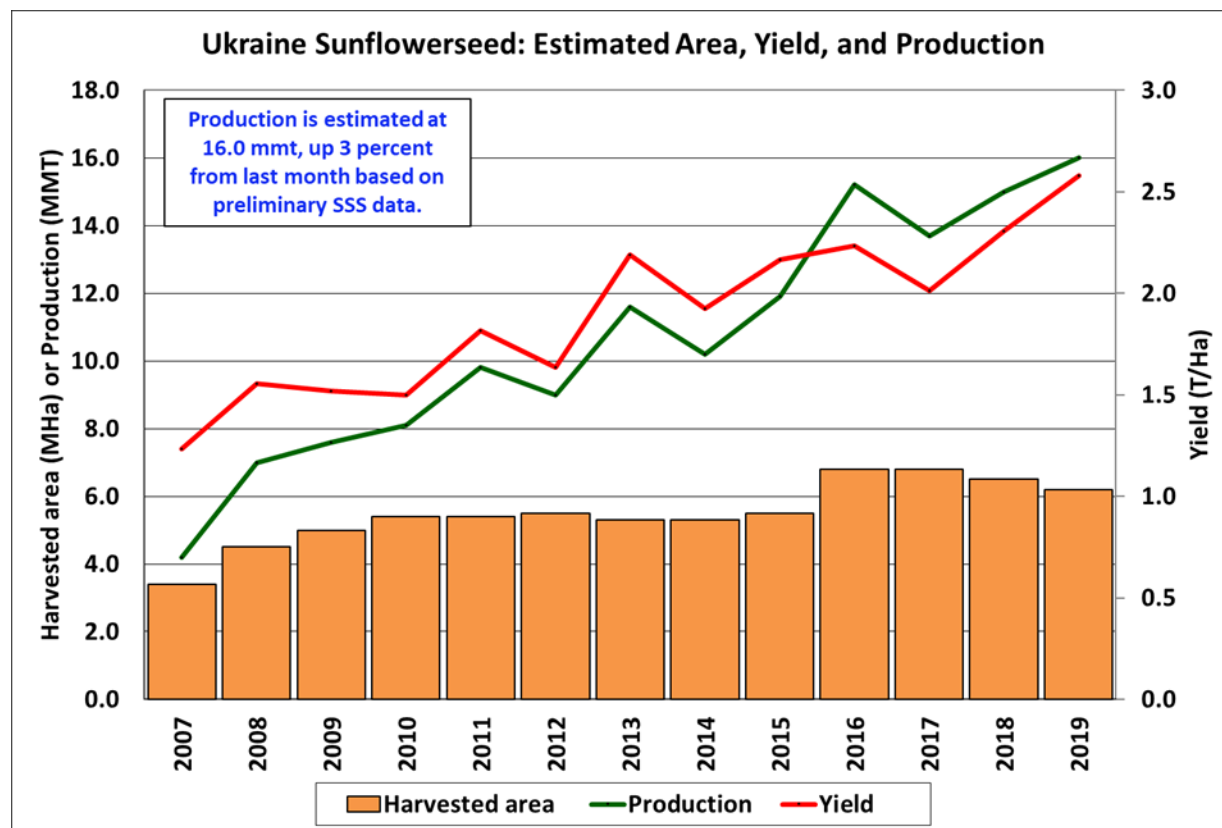
Brazil's soybean planting season is from September 16 through December 31 for most of the soybean producing states. Planting progress for 2019 was behind the average national pace and some soybeans were still being planted in early January due to drought in December for the Northeast (~11 mmt production) and Rio Grande do Sul (~19 mmt). Favorable rains in January, however, helped to establish and recover crops affected by drought in December.





Harvest began in January for crops planted in mid-September and it will continue through late May for the main soybean producing regions. FAS analysts from Washington, DC and Brasilia traveled in Mato Grosso, and large corporate farms reported above-average yields from their early harvested fields. Approximately 17 percent of the crop was harvested by late January and harvest progress is well ahead of the 5-year national average pace of 8 percent. Harvest progress is 20 percent complete in Mato Grosso, the largest soybean producing state (~ 33 mmt), and early harvest reports indicated above-average yields. NDVI-MODIS satellite imagery confirms well above-average crop conditions in Mato Grosso. Favorable crop conditions are also recorded in other large producing states such as Paraná (~20 mmt), Goiás (~ 12 mmt), and Mato Grosso do Sul (~10 mmt). (For more information, please contact [Curt.Reynolds@usda.gov](mailto:Curt.Reynolds@usda.gov).)

## Ukraine Sunflowerseed: Record Yield

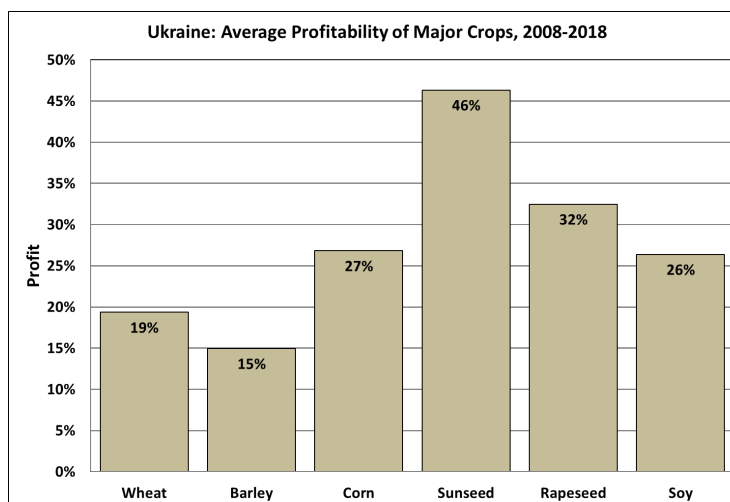


USDA Foreign Agricultural Service  
Global Market Analysis  
International Production Assessment Division

Source: USDA PSD Online

Ukraine sunflowerseed production for 2019/20 is estimated at 16.0 million metric tons (mmt), up 3 percent from last month and up 7 percent from last year. Yield is estimated at 2.58 tons per hectare, up 3 percent from last month and up 12 percent from last year. Total area is estimated at 6.2 million hectares, unchanged from last month and down 5 percent from last year.

Favorable weather in the Steppe zone throughout the growing season boosted yields to a record. The month-to-month increase in yield is based on preliminary harvest data from the State Statistical Service. Yields have been increasing since the early 2000's due to increased investment in both local and imported hybrid seeds. Sunflowers continue to be one of Ukraine's most profitable crops. USDA crop production estimates for Ukraine include estimated output from Crimea. *(For more information, please contact [Katie.McGaughey@usda.gov](mailto:Katie.McGaughey@usda.gov).)*

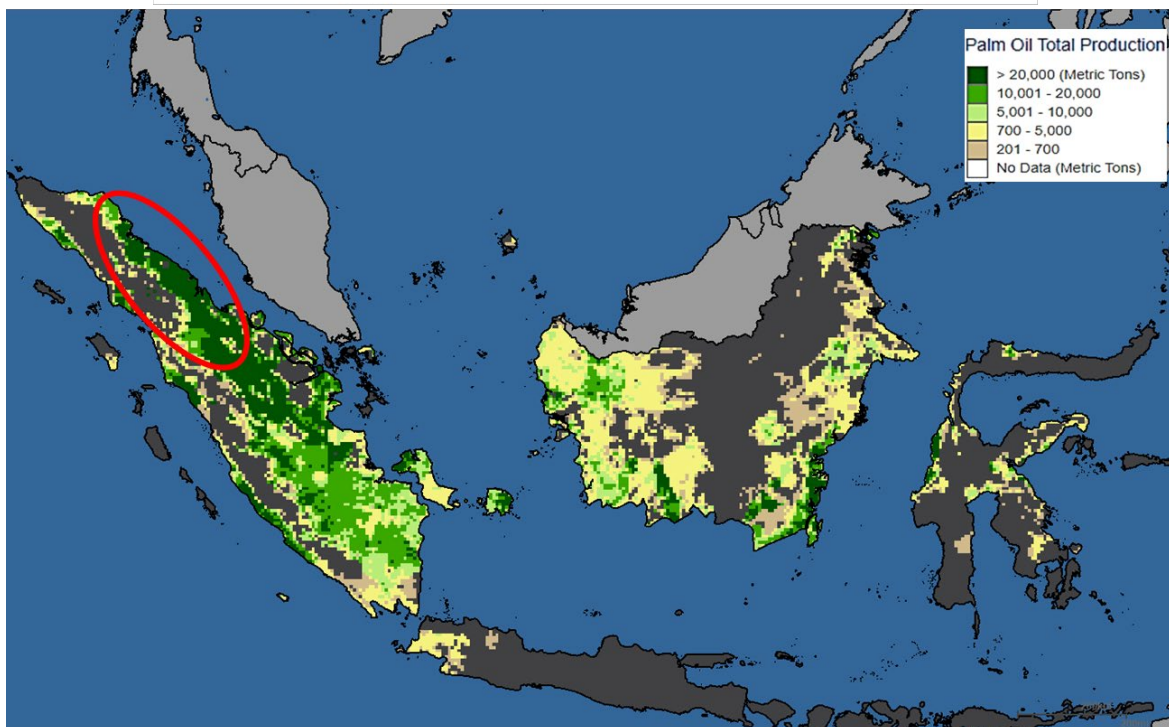


USDA Foreign Agricultural Service  
Global Market Analysis  
International Production Assessment Division

Source: State Statistical Service

## Indonesia Palm Oil: Estimated Production Reduced on Below-Average Rainfall

### Indonesia Palm Oil – Low Rainfall Impacts Production

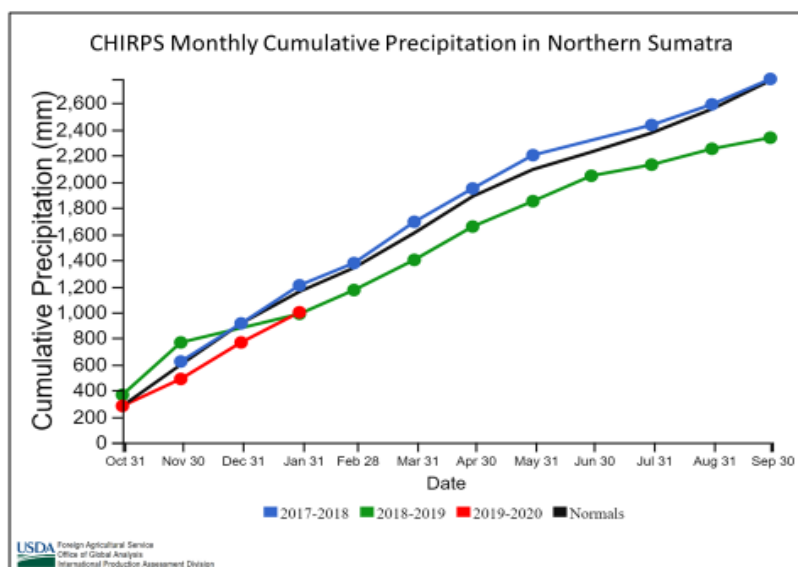


USDA Foreign Agricultural Service  
Global Market Analysis  
International Production Assessment Division

Source: Agricultural Lands 10km IFPRI (SPAM)

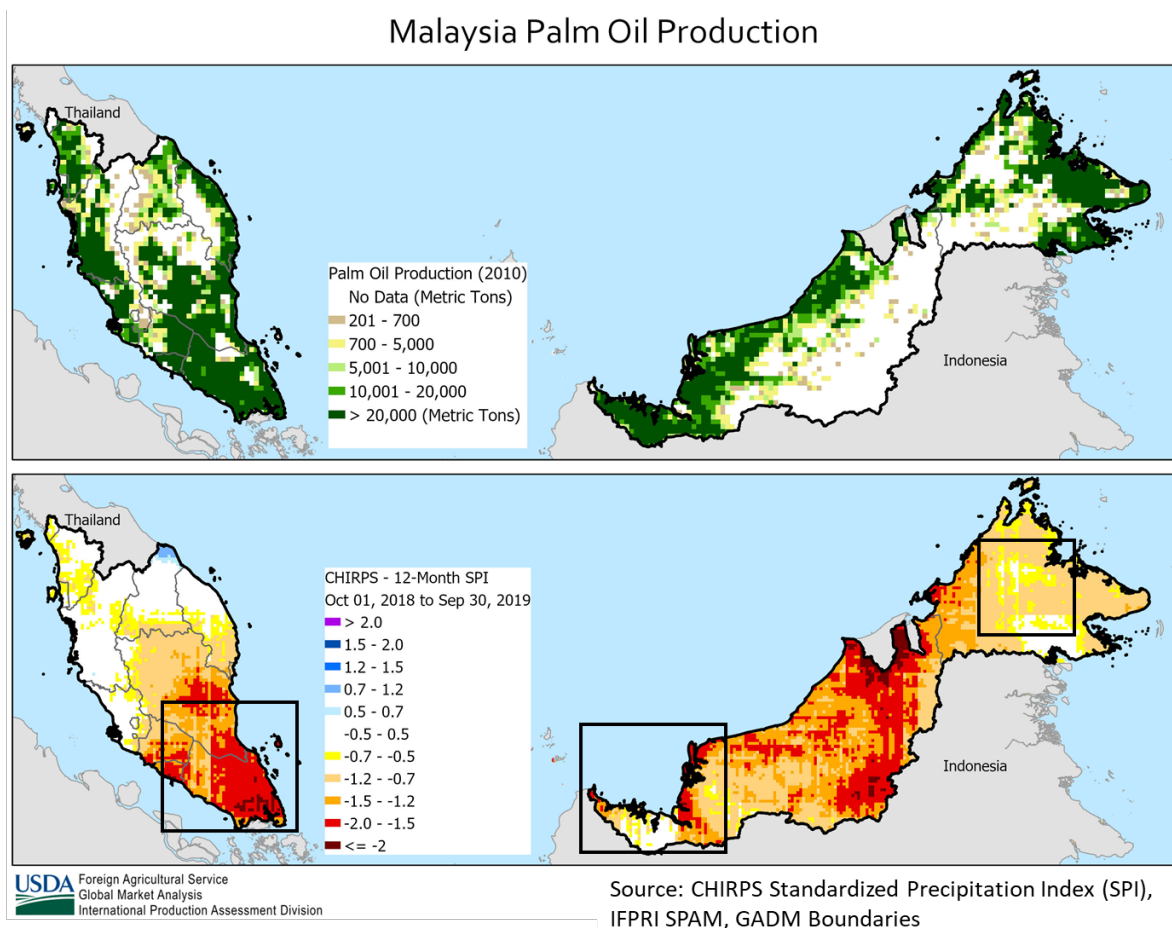
USDA estimates Indonesia 2019/20 palm oil production at 42.5 million metric tons (mmt), down 1 percent from last month but up 2 percent from last year. Harvested area is estimated at 11.8 million hectares, unchanged from last month but up 4 percent from last year. Yield is estimated at 3.62 tons per hectare, down 1 percent from last month and down 2 percent from last year.

Below-average seasonal rainfall during 2019 impacted palm oil production in Indonesia's main producing regions. Drastic impacts to palm oil production, however, were mitigated due to areas receiving the monthly minimal water requirement threshold. Palm oil achieves favorable yields when accumulated monthly rainfall reaches 150 to 200 millimeters. USDA's market year for Indonesia palm oil is October through September. *(For additional information, please contact [Justin.Jenkins@usda.gov](mailto:Justin.Jenkins@usda.gov).)*



USDA Foreign Agricultural Service  
Office of Global Analysis  
International Production Assessment Division

## Malaysia Palm Oil: Adverse Weather Conditions Lower Estimated Production

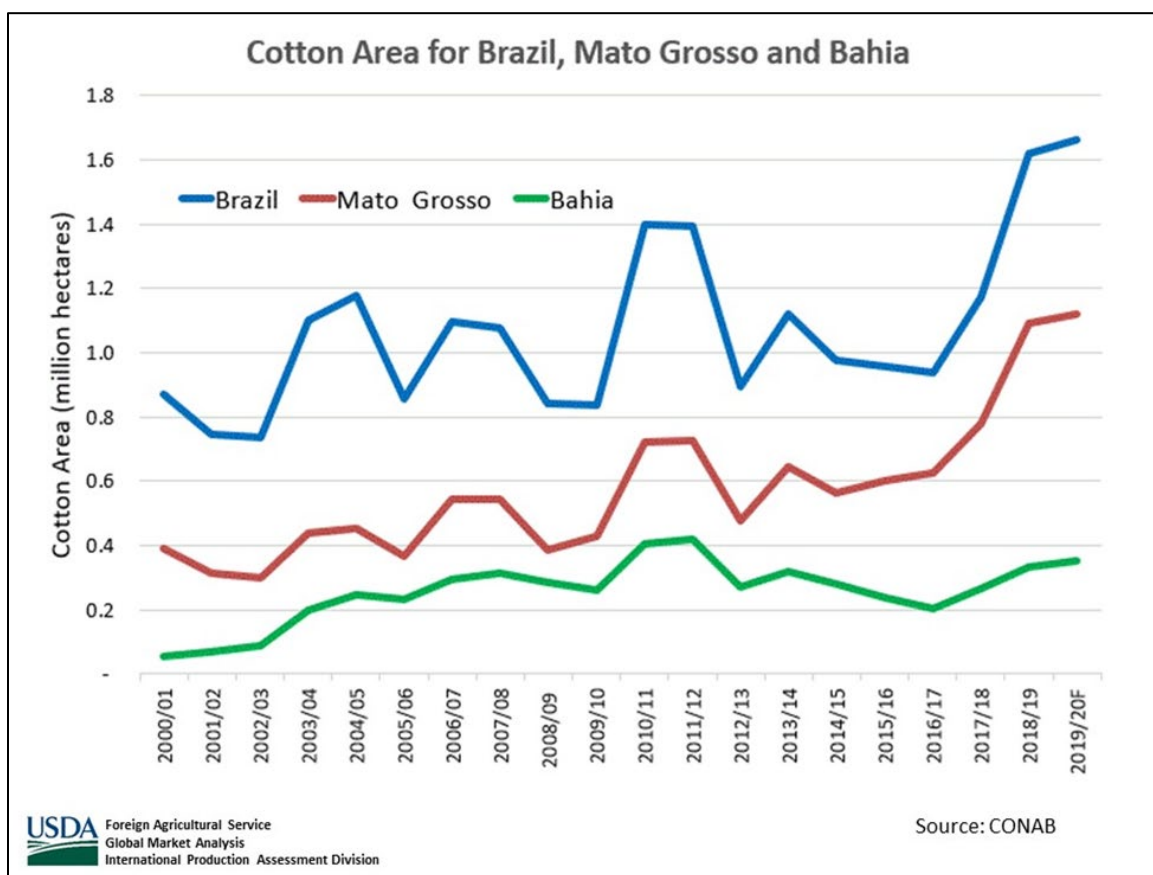


Main palm oil producing areas were negatively impacted by low rainfall during the 2018/19 season

USDA estimates Malaysia 2019/20 palm oil production at 19.8 million metric tons (mmt), down 3 percent from last month and down 5 percent from last year. Harvested area is estimated at 5.35 million hectares, unchanged from last month, but up 1 percent from last year. Yield is estimated at 3.70 tons per hectare, down 3 percent from last month and down 6 percent from last year.

Seasonal rains during 2019 underperformed, negatively impacting current palm oil production. Latest reports from the Malaysia Palm Oil Board indicated cumulative crude palm oil (CPO) production for October through December at 4.67 mmt, down 17 percent from last year. This would be the lowest cumulative total for October through December since 2010. On average October and November represent the highest CPO output in the market year followed by August and September. USDA's market year for Malaysia palm oil is October through September. *(For additional information, please contact [Justin.Jenkins@usda.gov](mailto:Justin.Jenkins@usda.gov)).*

## Brazil Cotton: Planting Begins for Second-Season Crop



Brazil's 2019/20 cotton production is forecast at 12.7 million 480-pound bales, up 0.20 million bales (2 percent) from last month but down 0.30 million bales (2 percent) from last year. Harvested 2019/20 cotton area is forecast at 1.65 million hectares (mha), up 0.03 mha (2 percent) from last month and 0.01 mha (1 percent) from last year. Cotton yield is forecast at 1,676 kilograms per hectare, above the five-year average yield. This year, Brazilian producers are expected to plant the most area since 1991 due to favorable returns from last year's crop, and similar returns are expected for this year if weather cooperates.

Mato Grosso and Bahia states produced approximately 89 percent of Brazil's cotton last year, with Mato Grosso producing approximately 67 percent of the total output on 1.12 mha and Bahia producing 22 percent on 0.35 mha. Mato Grosso begins planting the second-season crop in January and February, and cotton planting immediately follows the soybean harvest. Mato Grosso has two planting seasons, main and second season; second-season cotton is approximately 90 percent of total cotton area grown in the state.

Bahia is the second-largest cotton producing state and it is known for high-quality cotton and high yields. Bahia has only one growing season; it is planted in December and January and harvested from April through September. Cotton planting in Bahia was slightly delayed this year due to drought in December, but favorable rains in January allowed cotton farmers to plant their intended cotton area. (For more information, please contact [Curt.Reynolds@usda.gov](mailto:Curt.Reynolds@usda.gov).)



**World Agricultural Production  
U.S. Department of Agriculture**

Foreign Agricultural Service / Office of Global Analysis  
International Production Assessment Division (IPAD)

Ag Box 1051, Room 4630, South Building  
Washington, DC 20250-1051

<https://ipad.fas.usda.gov/>

Telephone: (202) 720-1662 Fax: (202) 720-1158

This report uses information from the Foreign Agricultural Service’s (FAS) global network of agricultural attachés and counselors, official statistics of foreign governments and other foreign source materials, and the analysis of economic data and satellite imagery. Estimates of foreign area, yield, and production are from the International Production Assessment Division, FAS, and are reviewed by USDA’s Inter-Agency Commodity Estimates Committee. Estimates of U.S. area, yield, and production are from USDA’s National Agricultural Statistics Service. Numbers within the report may not add to totals because of rounding. This report reflects official USDA estimates released in the World Agricultural Supply and Demand Estimates (WASDE-584), February 11, 2020.

**Printed copies are available from the National Technical Information Service. Download an order form at [http://www.ntis.gov/products/specialty/usda/fas\\_a-g.asp](http://www.ntis.gov/products/specialty/usda/fas_a-g.asp), or call NTIS at 1-800-363-2068.**

The FAS International Production Assessment Division prepared this report. The next issue of World Agricultural Production will be released after 12:00 p.m. Eastern Time, March 10, 2020.

**Conversion Table**

Metric tons to bushels

Wheat, soybeans	=	MT * 36.7437
Corn, sorghum, rye	=	MT * 39.36825
Barley	=	MT * 45.929625
Oats	=	MT * 68.894438

Metric tons to 480-lb bales

Cotton	=	MT * 4.592917
--------	---	---------------

Metric tons to hundredweight

Rice	=	MT * 22.04622
------	---	---------------

Area & weight

1 hectare	=	2.471044 acres
1 kilogram	=	2.204622 pounds



For further information, contact:  
**U.S. Department of Agriculture**  
**Foreign Agricultural Service**  
**Office of Global Analysis**  
International Production Assessment Division  
Ag Box 1051, Room 4630, South Building  
Washington, DC 20250-1051

Telephone: (202) 720-1662

Fax: (202) 720-1158

## **GENERAL INFORMATION**

Senior Director	Ronald Frantz	202-720-4056	ronald.frantz@usda.gov
Director	Robert Tetrault	202-720-1071	robert.tetrault@usda.gov
Administrative Assistant	Dionndra Williams	202-720-1662	dionndra.williams@usda.gov
USDA Remote Sensing Advisor	Vacant		
Sr. Analyst/Technical Lead	Curt Reynolds, Ph.D.	202-690-0134	curt.reynolds@usda.gov
Sr. Analyst/ Satellite Imagery	Dath Mita, Ph.D.	202-720-7339	dath.mita@usda.gov
Archives Manager/Technical Lead			
Sr. Analyst/ Global Special	Jim Crutchfield	202-690-0135	james.crutchfield@usda.gov
Projects Manager/Technical Lead			
Sr. Analyst/Technical Lead	Vacant		
GIS Mapping/Imagery Analyst	Lisa Colson	202-720-6652	lisa.colson@usda.gov
WAP Coordinators	Ifeoma Collins	202-720-0240	ifeoma.collins@usda.gov
	Aaron Mulhollen	202-690-0131	aaron.mulhollen@usda.gov

## **COUNTRY- AND REGION-SPECIFIC INFORMATION**

South America, Argentina, Venezuela, and Colombia	Denise McWilliams, Ph.D.	202-720-0107	denise.mcwilliams@usda.gov
Western and Central Europe, and North Africa	Bryan Purcell	202-690-0138	bryan.purcell@usda.gov
Russia, Ukraine, Kazakhstan, Moldova, and Belarus	Katie McGaughey	202-720-9210	katie.mcgaughey@usda.gov
South Asia, Sri Lanka	Arnella Trent	202-720-0881	arnella.trent@usda.gov
Bangladesh, India, and Nepal			
East Asia, China, and Japan	Dath Mita, Ph.D.	202-720-7339	dath.mita@usda.gov
Sub-Saharan Africa,	Curt Reynolds, Ph.D.	202-690-0134	curt.reynolds@usda.gov
Nigeria and South Africa			
S.E. Asia, Indonesia, Thailand, Malaysia, Cambodia and Vietnam	Justin Jenkins	202-720-0419	justin.jenkins@usda.gov
Central America, Mexico, and Western United States	Ifeoma Collins	202-720-0240	ifeoma.collins@usda.gov
Australia, New Zealand, Pakistan	Jim Crutchfield	202-690-0135	james.crutchfield@usda.gov
Papua New Guinea and South Pacific Islands			
Middle East, Central Asia, Afghanistan	Vacant		
Iraq, Iran, and Syria			
Canada, Caribbean, Eastern United States	Aaron Mulhollen	202-690-0131	aaron.mulhollen@usda.gov
Brazil	Vacant		



The Foreign Agricultural Service (FAS) updates its production, supply and distribution (PSD) database for cotton, oilseeds, and grains at 12:00 p.m. on the day the *World Agricultural Supply and Demand Estimates* (WASDE) report is released. This circular is released by 12:15 p.m.

### **FAS Reports and Databases:**

Current *World Market and Trade and World Agricultural Production* Reports:

<http://apps.fas.usda.gov/psdonline/psdDataPublications.aspx>

Archives *World Market and Trade and World Agricultural Production* Reports:

<http://usda.mannlib.cornell.edu/MannUsda/viewTaxonomy.do?taxonomyID=7>

Production, Supply and Distribution Database (PSD Online):

<http://apps.fas.usda.gov/psdonline/psdHome.aspx>

EU Countries Area & Production Estimates

<http://apps.fas.usda.gov/psdonline/psdDownload.aspx>

Global Agricultural Trade System (U.S. Exports and Imports):

<http://apps.fas.usda.gov/gats/default.aspx>

Export Sales Report:

<http://apps.fas.usda.gov/esrquery/>

Global Agricultural Information Network (Agricultural Attaché Reports):

<http://gain.fas.usda.gov/Pages/Default.aspx>

### **Other USDA Reports:**

World Agricultural Supply and Demand Estimates (WASDE):

<http://www.usda.gov/oce/commodity/wasde/>

Economic Research Service:

<http://www.ers.usda.gov/topics/crops>

National Agricultural Statistics Service:

<http://www.nass.usda.gov/Publications/>



**Table 01 World Crop Production Summary**

Million Metric Tons

Commodity	World -	Total Foreign	North America			Former Soviet		European	Asia (WAP)					South America		Selected Other			All Others
			United States	Canada -	Mexico -	Russia -	Ukraine -		China -	India -	Indonesia	Pakistan	Thailand	Argentina	Brazil -	Australia	South Africa	Turkey -	
---Million metric tons---																			
<b>Wheat</b>																			
2017/18	762.9	715.5	47.4	30.4	3.5	85.2	27.0	nr	134.3	98.5	0.0	26.6	0.0	18.5	4.3	20.9	1.5	21.0	243.8
2018/19 prel.	731.5	680.1	51.3	32.2	3.0	71.7	25.1	nr	131.4	99.9	0.0	25.1	0.0	19.5	5.4	17.3	1.9	19.0	228.7
2019/20 proj.																			
Jan	764.4	712.1	52.3	32.4	3.3	73.5	29.0	nr	133.6	102.2	0.0	25.6	0.0	19.0	5.2	15.6	1.6	19.0	252.2
Feb	764.0	711.7	52.3	32.4	3.2	73.5	29.0	nr	133.6	102.2	0.0	25.6	0.0	19.0	5.2	15.6	1.5	19.0	251.9
<b>Coarse Grains</b>																			
2017/18	1,361.3	977.0	384.4	26.2	33.2	41.7	34.1	nr	265.7	46.9	11.9	6.2	5.1	39.3	85.1	12.2	13.6	12.3	343.5
2018/19 prel.	1,395.6	1,017.7	377.9	26.2	33.4	35.0	44.5	nr	264.5	43.0	12.0	6.6	5.7	59.2	104.3	10.9	12.4	13.3	346.7
2019/20 proj.																			
Jan	1,401.8	1,040.6	361.2	28.6	30.6	40.8	46.0	nr	268.2	46.0	12.7	6.6	5.3	57.6	104.3	10.0	14.5	14.5	355.0
Feb	1,402.7	1,041.5	361.2	28.6	30.6	40.8	46.4	nr	268.2	46.0	12.7	6.6	5.3	57.5	104.3	10.0	15.0	14.5	355.2
<b>Rice, Milled</b>																			
2017/18	494.8	489.2	5.7	0.0	0.2	0.6	0.0	nr	148.9	112.8	37.0	7.5	20.6	0.9	8.2	0.5	0.0	0.5	151.5
2018/19 prel.	499.2	492.1	7.1	0.0	0.2	0.7	0.0	nr	148.5	116.4	36.7	7.3	20.3	0.8	7.1	0.0	0.0	0.6	153.3
2019/20 proj.																			
Jan	496.7	490.8	5.9	0.0	0.2	0.7	0.0	nr	146.7	115.0	36.5	7.5	18.5	0.8	7.1	0.0	0.0	0.6	157.0
Feb	496.2	490.4	5.9	0.0	0.2	0.7	0.0	nr	146.7	115.0	36.5	7.5	18.5	0.8	7.1	0.0	0.0	0.6	156.6
<b>Total Grains</b>																			
2017/18	2,619.0	2,181.6	437.4	56.6	36.9	127.5	61.1	nr	548.9	258.2	48.9	40.3	25.6	58.7	97.5	33.6	15.1	33.8	738.8
2018/19 prel.	2,626.2	2,189.9	436.3	58.4	36.6	107.4	69.6	nr	544.4	259.3	48.7	39.0	26.0	79.5	116.9	28.3	14.3	32.9	728.7
2019/20 proj.																			
Jan	2,662.9	2,243.5	419.3	60.9	34.1	115.0	75.1	nr	548.5	263.1	49.2	39.7	23.8	77.4	116.7	25.6	16.1	34.1	764.3
Feb	2,662.9	2,243.6	419.3	60.9	34.0	115.0	75.5	nr	548.5	263.1	49.2	39.7	23.8	77.3	116.7	25.6	16.5	34.1	763.7
<b>Oilseeds</b>																			
2017/18	581.5	450.1	131.5	29.1	1.3	15.5	19.9	nr	59.6	35.4	13.8	4.0	1.0	42.5	125.8	5.4	2.6	3.2	91.1
2018/19 prel.	597.2	466.5	130.7	27.7	1.3	18.7	22.7	nr	60.0	35.5	14.1	3.8	1.0	61.0	122.0	2.9	2.0	3.5	90.4
2019/20 proj.																			
Jan	574.6	467.2	107.4	25.1	1.1	21.7	22.5	nr	62.6	36.4	14.4	3.1	1.1	57.9	127.9	2.3	2.4	3.2	85.7
Feb	576.8	469.4	107.4	25.1	1.1	21.7	23.0	nr	62.6	36.4	14.4	3.1	1.1	57.9	130.0	2.3	2.4	3.2	85.3
<b>Cotton</b>																			
2017/18	123.8	102.9	20.9	0.0	1.6	0.0	0.0	1.5	27.5	29.0	0.0	8.2	0.0	0.8	9.2	4.8	0.2	4.0	16.1
2018/19 prel.	118.6	100.2	18.4	0.0	1.7	0.0	0.0	1.7	27.8	25.8	0.0	7.6	0.0	1.1	13.0	2.2	0.2	3.7	15.4
2019/20 proj.																			
Jan	120.5	100.4	20.1	0.0	1.6	0.0	0.0	2.0	27.3	29.5	0.0	6.1	0.0	1.0	12.5	0.7	0.2	3.4	16.2
Feb	121.3	101.2	20.1	0.0	1.6	0.0	0.0	2.0	27.3	29.5	0.0	6.6	0.0	1.0	12.7	0.7	0.2	3.4	16.4

1/ Includes wheat, coarse grains, and rice (milled) shown above.

**Table 02 Wheat Area, Yield, and Production**

Country / Region	Area (Million hectares)				Yield (Metric tons per hectare)				Production (Million metric tons)				Change in Production			
	2017/18	Prel.	2019/20 Proj.		2017/18	Prel.	2019/20 Proj.		2017/18	Prel.	2019/20 Proj.		From last month		From last year	
		2018/19	Jan	Feb		2018/19	Jan	Feb		2018/19	Jan	Feb	MMT	Percent	MMT	Percent
<b>World</b>	218.61	215.48	217.19	217.18	3.49	3.39	3.52	3.52	762.88	731.45	764.39	763.95	-0.44	-0.06	32.50	4.44
<b>United States</b>	15.20	16.03	15.04	15.04	3.12	3.20	3.47	3.47	47.38	51.31	52.26	52.26	0.00	0.00	0.95	1.86
<b>Total Foreign</b>	203.42	199.45	202.16	202.14	3.52	3.41	3.52	3.52	715.50	680.15	712.13	711.69	-0.44	-0.06	31.55	4.64
<b>European Union - 28</b>	26.16	25.58	26.07	26.07	5.78	5.35	5.91	5.91	151.13	136.86	154.00	154.00	0.00	0.00	17.14	12.52
<b>China</b>	24.51	24.27	23.73	23.73	5.48	5.42	5.63	5.63	134.33	131.43	133.59	133.59	0.00	0.00	2.16	1.64
<b>South Asia</b>																
India	30.79	29.65	29.85	29.85	3.20	3.37	3.42	3.42	98.51	99.87	102.19	102.19	0.00	0.00	2.32	2.32
Pakistan	9.05	8.80	8.80	8.80	2.94	2.85	2.91	2.91	26.60	25.10	25.60	25.60	0.00	0.00	0.50	1.99
Afghanistan	2.10	2.00	2.30	2.30	2.03	1.80	2.17	2.17	4.28	3.60	5.00	5.00	0.00	0.00	1.40	38.89
Nepal	0.77	0.76	0.76	0.76	2.31	2.35	2.35	2.35	1.78	1.79	1.79	1.79	0.00	0.00	0.00	0.00
<b>Former Soviet Union - 12</b>																
Russia	27.37	26.34	27.20	27.20	3.11	2.72	2.70	2.70	85.17	71.69	73.50	73.50	0.00	0.00	1.82	2.53
Russia Winter	14.67	14.91	15.30	15.30	4.17	3.52	3.56	3.56	61.15	52.47	54.50	54.50	0.00	0.00	2.03	3.87
Russia Spring	12.71	11.44	11.90	11.90	1.89	1.68	1.60	1.60	24.01	19.22	19.00	19.00	0.00	0.00	-0.22	-1.12
Ukraine	6.64	6.72	7.05	7.05	4.06	3.73	4.11	4.11	26.98	25.06	29.00	29.00	0.00	0.00	3.94	15.74
Kazakhstan	11.91	11.35	11.25	11.25	1.24	1.23	1.02	1.02	14.80	13.95	11.50	11.50	0.00	0.00	-2.45	-17.54
Uzbekistan	1.45	1.40	1.40	1.40	4.80	4.29	4.86	4.86	6.94	6.00	6.80	6.80	0.00	0.00	0.80	13.33
Belarus	0.72	0.66	0.75	0.75	3.65	2.75	3.83	3.83	2.62	1.82	2.88	2.88	0.00	0.00	1.06	58.40
<b>Canada</b>	8.98	9.88	9.66	9.66	3.38	3.26	3.35	3.35	30.38	32.20	32.35	32.35	0.00	0.00	0.15	0.46
<b>South America</b>																
Argentina	5.80	6.05	6.37	6.37	3.19	3.22	2.98	2.98	18.50	19.50	19.00	19.00	0.00	0.00	-0.50	-2.56
Brazil	1.92	2.04	2.04	2.04	2.23	2.66	2.55	2.55	4.26	5.43	5.20	5.20	0.00	0.00	-0.23	-4.20
Uruguay	0.19	0.20	0.23	0.23	2.37	3.68	3.30	3.30	0.44	0.73	0.76	0.76	0.00	0.00	0.03	4.40
<b>Australia</b>	10.92	10.16	10.10	10.10	1.92	1.70	1.54	1.54	20.94	17.30	15.60	15.60	0.00	0.00	-1.70	-9.82
<b>Africa</b>																
Egypt	1.32	1.32	1.37	1.37	6.40	6.40	6.40	6.40	8.45	8.45	8.77	8.77	0.00	0.00	0.32	3.79
Morocco	3.32	2.85	2.75	2.75	2.14	2.58	1.60	1.45	7.09	7.34	4.40	4.00	-0.40	-9.09	-3.34	-45.50
Ethiopia	1.72	1.84	1.85	1.85	2.81	2.61	2.59	2.59	4.83	4.80	4.80	4.80	0.00	0.00	0.00	0.00
Algeria	1.60	2.07	2.10	2.10	1.50	1.90	1.90	1.90	2.40	3.94	4.00	4.00	0.00	0.00	0.06	1.52
<b>Middle East</b>																
Turkey	7.80	7.62	7.20	7.20	2.69	2.50	2.64	2.64	21.00	19.00	19.00	19.00	0.00	0.00	0.00	0.00
Iran	6.70	6.70	6.70	6.70	2.09	2.16	2.51	2.51	14.00	14.50	16.80	16.80	0.00	0.00	2.30	15.86
Iraq	2.20	1.70	2.40	2.40	1.82	1.76	2.00	2.00	4.00	3.00	4.80	4.80	0.00	0.00	1.80	60.00
Syria	1.10	1.10	1.60	1.60	2.00	1.82	3.00	3.00	2.20	2.00	4.80	4.80	0.00	0.00	2.80	140.00
<b>Mexico</b>	0.67	0.54	0.61	0.59	5.24	5.56	5.41	5.42	3.49	3.00	3.30	3.22	-0.09	-2.58	0.22	7.17
<b>Serbia</b>	0.54	0.65	0.58	0.58	4.26	4.63	4.48	4.48	2.30	3.00	2.60	2.60	0.00	0.00	-0.40	-13.33
<b>Others</b>	7.18	7.20	7.44	7.44	2.52	2.61	2.70	2.71	18.08	18.81	20.11	20.16	0.05	0.22	1.35	7.18

**Table 03 Total Coarse Grain Area, Yield, and Production**

Country / Region	Area (Million hectares)				Yield (Metric tons per hectare)				Production (Million metric tons)				Change in Production			
	2017/18	Prel.	2019/20 Proj.		2017/18	Prel.	2019/20 Proj.		2017/18	Prel.	2019/20 Proj.		From last month		From last year	
		2018/19	Jan	Feb		2018/19	Jan	Feb		2018/19	Jan	Feb	MMT	Percent	MMT	Percent
<b>World</b>	327.80	327.55	331.90	331.90	4.15	4.26	4.22	4.23	1,361.34	1,395.60	1,401.80	1,402.70	0.90	0.06	7.10	0.51
<b>United States</b>	36.76	36.20	36.21	36.21	10.46	10.44	9.98	9.98	384.39	377.91	361.19	361.19	0.00	0.00	-16.72	-4.42
<b>Total Foreign</b>	291.04	291.34	295.69	295.70	3.36	3.49	3.52	3.52	976.95	1,017.69	1,040.61	1,041.51	0.90	0.09	23.82	2.34
<b>China</b>	44.57	44.48	43.72	43.72	5.96	5.95	6.14	6.14	265.72	264.51	268.20	268.20	0.00	0.00	3.68	1.39
<b>European Union</b>	28.97	29.16	29.88	29.88	5.25	5.08	5.32	5.32	152.10	148.19	159.04	159.04	0.00	0.00	10.86	7.33
<b>South America</b>																
Brazil	17.83	18.72	19.33	19.33	4.77	5.57	5.40	5.40	85.06	104.33	104.35	104.35	0.00	0.00	0.02	0.01
Argentina	7.10	8.22	8.05	8.01	5.54	7.20	7.16	7.18	39.32	59.22	57.62	57.51	-0.11	-0.19	-1.71	-2.89
<b>Former Soviet Union - 12</b>																
Russia	14.59	14.03	14.53	14.53	2.86	2.50	2.81	2.81	41.72	35.00	40.77	40.77	0.00	0.00	5.77	16.49
Ukraine	7.59	7.58	8.01	8.13	4.49	5.87	5.75	5.71	34.07	44.50	46.04	46.43	0.39	0.85	1.93	4.33
Kazakhstan	2.49	2.97	3.41	3.41	1.79	1.76	1.52	1.52	4.45	5.23	5.19	5.19	0.00	0.00	-0.04	-0.80
Belarus	1.00	0.97	0.85	0.85	3.30	2.56	3.59	3.59	3.29	2.49	3.05	3.05	0.00	0.00	0.56	22.54
<b>Africa</b>																
Nigeria	14.57	14.30	14.40	14.40	1.29	1.39	1.38	1.38	18.86	19.92	19.90	19.90	0.00	0.00	-0.02	-0.10
South Africa	2.79	2.81	3.12	3.12	4.86	4.41	4.65	4.81	13.55	12.39	14.53	15.03	0.50	3.44	2.64	21.26
Tanzania	5.32	5.35	5.35	5.35	1.47	1.36	1.37	1.37	7.83	7.26	7.35	7.35	0.00	0.00	0.09	1.23
Burkina	3.85	3.85	3.85	3.85	0.97	1.25	1.17	1.17	3.73	4.82	4.50	4.50	0.00	0.00	-0.32	-6.62
Ethiopia	5.55	5.65	5.65	5.65	3.01	2.96	3.01	3.01	16.68	16.70	17.00	17.00	0.00	0.00	0.30	1.80
Egypt	1.02	1.07	1.02	1.02	7.09	7.14	7.09	7.09	7.26	7.66	7.26	7.26	0.00	0.00	-0.40	-5.22
Mali	4.78	4.50	4.50	4.50	1.36	1.54	1.28	1.28	6.51	6.94	5.75	5.75	0.00	0.00	-1.19	-17.09
<b>India</b>	24.28	22.22	23.66	23.66	1.93	1.93	1.94	1.94	46.94	42.97	45.95	45.95	0.00	0.00	2.98	6.93
<b>Southeast Asia</b>																
Indonesia	3.65	3.70	3.90	3.90	3.26	3.24	3.26	3.26	11.90	12.00	12.70	12.70	0.00	0.00	0.70	5.83
Philippines	2.60	2.48	2.55	2.55	3.10	3.07	3.18	3.18	8.08	7.61	8.10	8.10	0.00	0.00	0.49	6.47
Vietnam	1.04	0.95	1.00	0.95	4.72	4.80	4.85	4.74	4.91	4.56	4.85	4.50	-0.35	-7.22	-0.06	-1.32
Thailand	1.15	1.32	1.22	1.22	4.38	4.29	4.31	4.31	5.05	5.68	5.25	5.25	0.00	0.00	-0.43	-7.49
<b>Mexico</b>	9.07	8.95	8.56	8.56	3.66	3.73	3.57	3.57	33.19	33.40	30.60	30.60	0.00	0.00	-2.80	-8.38
<b>Canada</b>	4.74	5.00	5.51	5.51	5.54	5.24	5.19	5.19	26.24	26.19	28.56	28.56	0.00	0.00	2.36	9.01
<b>Australia</b>	5.59	5.03	5.01	5.01	2.18	2.17	1.99	1.99	12.19	10.93	9.96	9.96	0.00	0.00	-0.97	-8.90
<b>Middle East</b>																
Turkey	4.15	4.34	4.53	4.53	2.96	3.05	3.19	3.19	12.27	13.25	14.45	14.45	0.00	0.00	1.20	9.06
Iran	1.78	1.73	1.91	1.91	2.43	2.32	2.63	2.63	4.34	4.02	5.02	5.02	0.00	0.00	1.00	24.88
<b>Others</b>	70.96	71.96	72.20	72.18	1.57	1.64	1.59	1.59	111.69	117.92	114.64	115.11	0.47	0.41	-2.81	-2.38

World and Selected Countries and Regions; Coarse Grain includes: Barley, Corn, Millet, Mixed Grains, Oats, Rye and Sorghum

**Table 04 Corn Area, Yield, and Production**

Country / Region	Area (Million hectares)				Yield (Metric tons per hectare)				Production (Million metric tons)				Change in Production			
	2017/18	Prel.	2019/20 Proj.		2017/18	Prel.	2019/20 Proj.		2017/18	Prel.	2019/20 Proj.		From last month		From last year	
		2018/19	Jan	Feb		2018/19	Jan	Feb		2018/19	Jan	Feb	MMT	Percent	MMT	Percent
<b>World</b>	192.12	191.66	192.17	192.21	5.62	5.86	5.78	5.78	1,079.90	1,122.73	1,110.84	1,111.59	0.75	0.07	-11.14	-0.99
<b>United States</b>	33.48	32.89	32.98	32.98	11.08	11.07	10.55	10.55	371.10	364.26	347.78	347.78	0.00	0.00	-16.48	-4.52
<b>Total Foreign</b>	158.64	158.77	159.20	159.23	4.47	4.78	4.79	4.80	708.80	758.46	763.05	763.80	0.75	0.10	5.34	0.70
<b>China</b>	42.40	42.13	41.28	41.28	6.11	6.11	6.32	6.32	259.07	257.33	260.77	260.77	0.00	0.00	3.44	1.34
<b>South America</b>																
Brazil	16.60	17.50	18.10	18.10	4.94	5.77	5.58	5.58	82.00	101.00	101.00	101.00	0.00	0.00	0.00	0.00
Argentina	5.20	6.10	6.10	6.10	6.15	8.36	8.20	8.20	32.00	51.00	50.00	50.00	0.00	0.00	-1.00	-1.96
Bolivia	0.46	0.40	0.35	0.35	2.73	2.65	2.80	2.80	1.26	1.05	0.98	0.98	0.00	0.00	-0.07	-6.67
<b>European Union</b>	8.26	8.24	8.70	8.70	7.51	7.82	7.47	7.47	62.01	64.44	65.00	65.00	0.00	0.00	0.56	0.87
<b>Africa</b>																
South Africa	2.63	2.60	2.90	2.90	4.97	4.54	4.83	5.00	13.10	11.80	14.00	14.50	0.50	3.57	2.70	22.88
Nigeria	6.54	6.50	6.50	6.50	1.59	1.69	1.69	1.69	10.42	11.00	11.00	11.00	0.00	0.00	0.00	0.00
Ethiopia	2.23	2.30	2.30	2.30	3.77	3.63	3.65	3.65	8.40	8.35	8.40	8.40	0.00	0.00	0.05	0.60
Egypt	0.80	0.85	0.80	0.80	8.00	8.00	8.00	8.00	6.40	6.80	6.40	6.40	0.00	0.00	-0.40	-5.88
Tanzania	4.20	4.20	4.20	4.20	1.59	1.49	1.48	1.48	6.68	6.27	6.20	6.20	0.00	0.00	-0.07	-1.16
Malawi	1.73	1.70	1.70	1.70	2.01	1.64	2.00	2.00	3.46	2.79	3.40	3.40	0.00	0.00	0.61	21.78
Zambia	1.43	1.09	0.84	0.84	2.52	2.21	2.38	2.38	3.61	2.40	2.00	2.00	0.00	0.00	-0.39	-16.33
Kenya	2.09	2.20	2.00	2.00	1.52	1.82	1.70	1.70	3.19	4.00	3.40	3.40	0.00	0.00	-0.60	-15.00
Uganda	1.19	1.19	1.15	1.15	2.54	2.37	2.43	2.43	3.02	2.83	2.80	2.80	0.00	0.00	-0.03	-0.88
Zimbabwe	1.88	1.72	1.62	1.62	1.15	0.99	0.48	0.48	2.16	1.70	0.78	0.78	0.00	0.00	-0.92	-54.32
<b>Former Soviet Union - 12</b>																
Ukraine	4.43	4.57	4.90	5.00	5.44	7.84	7.24	7.16	24.12	35.81	35.50	35.80	0.30	0.85	-0.01	-0.01
Russia	2.69	2.37	2.55	2.55	4.90	4.81	5.69	5.69	13.20	11.42	14.50	14.50	0.00	0.00	3.09	27.03
<b>South Asia</b>																
India	9.38	9.20	9.50	9.50	3.07	2.96	3.05	3.05	28.75	27.23	29.00	29.00	0.00	0.00	1.77	6.50
Pakistan	1.23	1.32	1.33	1.33	4.63	4.62	4.59	4.59	5.70	6.10	6.10	6.10	0.00	0.00	0.00	0.00
Nepal	0.90	0.90	0.90	0.90	2.84	2.83	2.83	2.83	2.56	2.55	2.55	2.55	0.00	0.00	0.00	0.00
<b>Southeast Asia</b>																
Indonesia	3.65	3.70	3.90	3.90	3.26	3.24	3.26	3.26	11.90	12.00	12.70	12.70	0.00	0.00	0.70	5.83
Philippines	2.60	2.48	2.55	2.55	3.10	3.07	3.18	3.18	8.08	7.61	8.10	8.10	0.00	0.00	0.49	6.47
Vietnam	1.04	0.95	1.00	0.95	4.72	4.80	4.85	4.74	4.91	4.56	4.85	4.50	-0.35	-7.22	-0.06	-1.32
Thailand	1.13	1.30	1.19	1.19	4.44	4.34	4.37	4.37	5.00	5.63	5.20	5.20	0.00	0.00	-0.43	-7.56
<b>Mexico</b>	7.32	7.20	6.80	6.80	3.77	3.83	3.68	3.68	27.57	27.60	25.00	25.00	0.00	0.00	-2.60	-9.42
<b>Canada</b>	1.41	1.43	1.45	1.45	10.02	9.70	9.24	9.24	14.10	13.89	13.40	13.40	0.00	0.00	-0.49	-3.49
<b>Turkey</b>	0.53	0.53	0.52	0.52	10.00	10.75	11.54	11.54	5.30	5.70	6.00	6.00	0.00	0.00	0.30	5.26
<b>Others</b>	24.70	24.10	24.06	24.05	2.46	2.72	2.66	2.67	60.85	65.63	64.02	64.32	0.30	0.47	-1.31	-1.99

World and Selected Countries and Regions

**Table 05 Barley Area, Yield, and Production**

Country / Region	Area (Million hectares)				Yield (Metric tons per hectare)				Production (Million metric tons)				Change in Production						
	2017/18	Prel.		2019/20 Proj.		2017/18	Prel.		2019/20 Proj.		2017/18	Prel.		2019/20 Proj.		From last month		From last year	
		2018/19	Jan	Feb	2018/19		Jan	Feb	2018/19	Jan		Feb	MMT	Percent	MMT	Percent			
<b>World</b>	47.37	48.00	51.64	51.59	3.02	2.89	3.02	3.03	143.10	138.67	156.05	156.12	0.07	0.04	17.45	12.58			
<b>United States</b>	0.79	0.80	0.88	0.88	3.93	4.17	4.18	4.18	3.12	3.34	3.69	3.69	0.00	0.00	0.35	10.44			
<b>Total Foreign</b>	46.57	47.19	50.76	50.70	3.01	2.87	3.00	3.01	139.98	135.33	152.36	152.43	0.07	0.05	17.10	12.63			
<b>European Union</b>	12.10	12.28	12.38	12.38	4.85	4.56	5.07	5.07	58.65	55.95	62.75	62.75	0.00	0.00	6.80	12.16			
<b>Former Soviet Union - 12</b>																			
Russia	7.71	7.78	8.40	8.40	2.62	2.15	2.38	2.38	20.21	16.74	20.00	20.00	0.00	0.00	3.26	19.50			
Ukraine	2.65	2.57	2.70	2.70	3.28	2.96	3.52	3.52	8.70	7.60	9.50	9.50	0.00	0.00	1.90	24.93			
Kazakhstan	2.07	2.52	2.95	2.95	1.60	1.58	1.32	1.32	3.31	3.97	3.90	3.90	0.00	0.00	-0.07	-1.79			
Belarus	0.45	0.43	0.40	0.40	3.14	2.20	3.50	3.50	1.42	0.94	1.40	1.40	0.00	0.00	0.46	48.31			
Azerbaijan	0.32	0.32	0.32	0.32	2.48	2.72	2.72	2.72	0.79	0.87	0.87	0.87	0.00	0.00	0.00	0.00			
<b>Canada</b>	2.11	2.40	2.70	2.70	3.73	3.50	3.85	3.85	7.89	8.38	10.40	10.40	0.00	0.00	2.02	24.11			
<b>Australia</b>	4.12	3.72	3.95	3.95	2.24	2.23	2.08	2.08	9.25	8.31	8.20	8.20	0.00	0.00	-0.11	-1.32			
<b>Middle East</b>																			
Turkey	3.40	3.60	3.80	3.80	1.88	1.94	2.08	2.08	6.40	7.00	7.90	7.90	0.00	0.00	0.90	12.86			
Iran	1.60	1.55	1.70	1.70	1.94	1.81	2.12	2.12	3.10	2.80	3.60	3.60	0.00	0.00	0.80	28.57			
Iraq	0.78	0.60	1.20	1.20	1.26	1.30	1.33	1.33	0.98	0.78	1.60	1.60	0.00	0.00	0.82	105.13			
Syria	0.80	0.80	1.50	1.50	0.97	0.50	1.33	1.33	0.78	0.40	2.00	2.00	0.00	0.00	1.60	400.00			
<b>Africa</b>																			
Ethiopia	0.96	1.00	1.00	1.00	2.13	2.20	2.30	2.30	2.03	2.20	2.30	2.30	0.00	0.00	0.10	4.55			
Morocco	1.89	1.60	1.45	1.45	1.30	1.82	0.69	0.83	2.47	2.91	1.00	1.20	0.20	20.00	-1.71	-58.76			
Algeria	0.76	1.03	1.03	1.03	1.27	1.90	2.00	2.00	0.97	1.95	2.05	2.05	0.00	0.00	0.10	5.13			
Tunisia	0.39	0.31	0.40	0.40	1.02	0.99	1.63	1.63	0.40	0.31	0.65	0.65	0.00	0.00	0.34	109.68			
South Africa	0.09	0.12	0.13	0.13	3.37	3.55	2.77	2.77	0.31	0.42	0.37	0.37	0.00	0.00	-0.06	-13.51			
<b>South America</b>																			
Argentina	0.94	1.20	1.20	1.15	4.00	4.22	3.92	4.00	3.74	5.06	4.70	4.60	-0.10	-2.13	-0.46	-9.09			
Uruguay	0.14	0.15	0.17	0.16	2.67	3.83	3.82	3.75	0.39	0.58	0.63	0.60	-0.03	-4.76	0.03	4.35			
Brazil	0.11	0.11	0.12	0.12	2.61	3.16	3.56	3.56	0.28	0.35	0.42	0.42	0.00	0.00	0.06	17.80			
<b>India</b>	0.66	0.66	0.66	0.66	2.66	2.69	2.64	2.64	1.75	1.78	1.75	1.75	0.00	0.00	-0.03	-1.74			
<b>China</b>	0.33	0.26	0.26	0.26	3.29	3.64	3.46	3.46	1.09	0.96	0.90	0.90	0.00	0.00	-0.06	-5.96			
<b>Mexico</b>	0.36	0.35	0.36	0.36	2.81	2.82	2.81	2.81	1.01	1.00	1.01	1.01	0.00	0.00	0.01	1.41			
<b>Afghanistan</b>	0.07	0.06	0.18	0.18	1.40	0.95	1.39	1.39	0.10	0.06	0.25	0.25	0.00	0.00	0.19	338.60			
<b>Others</b>	1.76	1.78	1.81	1.81	2.27	2.26	2.33	2.33	4.00	4.02	4.22	4.22	0.00	0.00	0.20	4.98			

World and Selected Countries and Regions

**Table 06 Oats Area, Yield, and Production**

Country / Region	Area (Million hectares)				Yield (Metric tons per hectare)				Production (Million metric tons)				Change in Production			
	2017/18	Prel.	2019/20 Proj.		2017/18	Prel.	2019/20 Proj.		2017/18	Prel.	2019/20 Proj.		From last month		From last year	
		2018/19	Jan	Feb		2018/19	Jan	Feb		2018/19	Jan	Feb	MMT	Percent	MMT	Percent
<b>World</b>	9.86	9.72	9.27	9.28	2.40	2.26	2.44	2.44	23.70	21.92	22.67	22.66	-0.01	-0.04	0.74	3.37
<b>United States</b>	0.33	0.35	0.33	0.33	2.22	2.33	2.31	2.31	0.72	0.82	0.77	0.77	0.00	0.00	-0.04	-5.40
<b>Total Foreign</b>	9.54	9.37	8.94	8.95	2.41	2.25	2.45	2.45	22.98	21.10	21.90	21.89	-0.01	-0.05	0.78	3.71
<b>European Union</b>	2.67	2.71	2.55	2.55	3.02	2.85	3.10	3.10	8.06	7.72	7.92	7.92	0.00	0.00	0.21	2.66
<b>Former Soviet Union - 12</b>																
Russia	2.78	2.73	2.40	2.40	1.96	1.73	1.83	1.83	5.45	4.72	4.40	4.40	0.00	0.00	-0.32	-6.68
Ukraine	0.21	0.20	0.18	0.18	2.31	2.14	2.39	2.39	0.48	0.42	0.43	0.43	0.00	0.00	0.01	1.65
Belarus	0.15	0.15	0.15	0.15	3.33	2.26	3.00	3.00	0.50	0.34	0.45	0.45	0.00	0.00	0.11	31.58
Kazakhstan	0.21	0.24	0.24	0.24	1.34	1.43	1.45	1.45	0.29	0.34	0.34	0.34	0.00	0.00	0.00	1.19
<b>Canada</b>	1.05	1.01	1.16	1.16	3.55	3.42	3.59	3.59	3.73	3.44	4.16	4.16	0.00	0.00	0.72	21.07
<b>South America</b>																
Argentina	0.22	0.24	0.13	0.14	2.24	2.40	2.54	2.31	0.49	0.57	0.34	0.33	-0.01	-2.94	-0.24	-42.31
Brazil	0.34	0.38	0.38	0.38	1.86	2.11	2.17	2.17	0.63	0.80	0.83	0.83	0.00	0.00	0.03	3.77
Chile	0.11	0.08	0.08	0.08	5.31	5.13	5.50	5.50	0.57	0.39	0.44	0.44	0.00	0.00	0.06	14.29
Uruguay	0.02	0.03	0.01	0.01	1.68	2.04	1.86	1.86	0.03	0.05	0.03	0.03	0.00	0.00	-0.03	-50.94
<b>Oceania</b>																
Australia	0.87	0.68	0.68	0.68	1.40	1.31	1.39	1.39	1.23	0.89	0.94	0.94	0.00	0.00	0.05	5.29
New Zealand	0.01	0.01	0.01	0.01	5.83	5.00	5.50	5.50	0.04	0.03	0.03	0.03	0.00	0.00	0.01	32.00
<b>China</b>	0.48	0.50	0.53	0.53	1.16	1.15	1.19	1.19	0.55	0.58	0.63	0.63	0.00	0.00	0.05	8.70
<b>Africa</b>																
Algeria	0.09	0.09	0.09	0.09	1.29	1.29	1.29	1.29	0.11	0.11	0.11	0.11	0.00	0.00	0.00	0.00
Morocco	0.03	0.05	0.05	0.05	1.17	1.40	0.89	0.89	0.04	0.06	0.04	0.04	0.00	0.00	-0.02	-36.51
South Africa	0.02	0.02	0.03	0.03	1.53	1.65	1.60	1.60	0.02	0.03	0.04	0.04	0.00	0.00	0.01	21.21
<b>Other Europe</b>																
Norway	0.07	0.07	0.07	0.07	4.16	2.09	4.29	4.29	0.28	0.14	0.30	0.30	0.00	0.00	0.16	108.33
Serbia	0.03	0.03	0.03	0.03	2.17	2.17	2.17	2.17	0.07	0.07	0.07	0.07	0.00	0.00	0.00	0.00
Albania	0.02	0.01	0.01	0.01	2.27	2.08	2.14	2.14	0.03	0.03	0.03	0.03	0.00	0.00	0.00	11.11
Bosnia and Herzegovina	0.01	0.01	0.01	0.01	2.73	2.79	3.00	3.00	0.03	0.04	0.04	0.04	0.00	0.00	0.00	7.69
<b>Turkey</b>	0.11	0.10	0.10	0.10	2.21	2.30	2.30	2.30	0.25	0.23	0.23	0.23	0.00	0.00	0.00	0.00
<b>Mexico</b>	0.04	0.05	0.05	0.05	1.64	2.06	1.80	1.80	0.07	0.10	0.09	0.09	0.00	0.00	-0.01	-12.62
<b>Others</b>	0.01	0.02	0.01	0.01	1.79	2.00	1.86	1.86	0.03	0.03	0.03	0.03	0.00	0.00	0.00	-13.33

World and Selected Countries and Regions

**Table 07 Rye Area, Yield, and Production**

Country / Region	Area (Million hectares)				Yield (Metric tons per hectare)				Production (Million metric tons)				Change in Production			
	2017/18	Prel.	2019/20 Proj.		2017/18	Prel.	2019/20 Proj.		2017/18	Prel.	2019/20 Proj.		From last month		From last year	
		2018/19	Jan	Feb		2018/19	Jan	Feb		2018/19	Jan	Feb	MMT	Percent	MMT	Percent
<b>World</b>	4.02	3.74	3.69	3.69	3.06	2.68	3.13	3.13	12.31	10.00	11.53	11.53	0.00	0.00	1.53	15.31
<b>United States</b>	0.12	0.11	0.13	0.13	2.15	1.95	2.16	2.16	0.26	0.21	0.27	0.27	0.00	0.00	0.06	26.17
<b>Total Foreign</b>	3.90	3.63	3.56	3.56	3.09	2.70	3.16	3.16	12.05	9.79	11.26	11.26	0.00	0.00	1.48	15.07
<b>European Union</b>	1.93	1.92	2.07	2.07	3.83	3.23	3.84	3.84	7.41	6.21	7.95	7.95	0.00	0.00	1.74	28.06
<b>Former Soviet Union - 12</b>																
Russia	1.17	0.96	0.83	0.83	2.17	2.00	1.73	1.73	2.54	1.91	1.43	1.43	0.00	0.00	-0.48	-25.29
Belarus	0.26	0.25	0.20	0.20	2.62	2.00	3.25	3.25	0.67	0.50	0.65	0.65	0.00	0.00	0.15	29.22
Ukraine	0.17	0.15	0.11	0.11	2.97	2.66	3.09	3.09	0.51	0.40	0.34	0.34	0.00	0.00	-0.06	-14.14
Kazakhstan	0.03	0.02	0.02	0.02	1.26	1.05	1.25	1.25	0.04	0.02	0.03	0.03	0.00	0.00	0.00	8.70
<b>Turkey</b>	0.10	0.11	0.11	0.11	3.17	2.91	2.91	2.91	0.32	0.32	0.32	0.32	0.00	0.00	0.00	0.00
<b>Canada</b>	0.10	0.08	0.10	0.10	3.39	2.99	3.30	3.30	0.34	0.24	0.33	0.33	0.00	0.00	0.09	39.83
<b>South America</b>																
Chile	0.00	0.00	0.00	0.00	5.00	5.00	5.00	5.00	0.01	0.01	0.01	0.01	0.00	0.00	0.00	0.00
Argentina	0.05	0.05	0.04	0.04	1.91	1.78	2.14	2.14	0.09	0.09	0.08	0.08	0.00	0.00	-0.01	-13.79
<b>Other Europe</b>																
Bosnia and Herzegovina	0.00	0.00	0.00	0.00	3.67	2.75	3.50	3.50	0.01	0.01	0.01	0.01	0.00	0.00	0.00	27.27
Switzerland	0.00	0.00	0.00	0.00	5.50	5.50	5.50	5.50	0.01	0.01	0.01	0.01	0.00	0.00	0.00	0.00
Serbia	0.00	0.00	0.00	0.00	2.50	2.50	2.50	2.50	0.01	0.01	0.01	0.01	0.00	0.00	0.00	0.00
<b>Australia</b>	0.04	0.04	0.04	0.04	0.75	0.68	0.68	0.68	0.03	0.03	0.03	0.03	0.00	0.00	0.00	0.00
<b>Others</b>	0.04	0.03	0.04	0.04	1.84	1.00	1.87	1.87	0.07	0.03	0.07	0.07	0.00	0.00	0.04	121.88

World and Selected Countries and Regions

**Table 08 Sorghum Area, Yield, and Production**

Country / Region	Area (Million hectares)				Yield (Metric tons per hectare)				Production (Million metric tons)				Change in Production						
	2017/18	Prel.		2019/20 Proj.		2017/18	Prel.		2019/20 Proj.		2017/18	Prel.		2019/20 Proj.		From last month		From last year	
		2018/19	Jan	Feb	2018/19		Jan	Feb	2018/19	Jan		Feb	MMT	Percent	MMT	Percent			
<b>World</b>	39.55	40.12	40.81	40.81	1.47	1.49	1.41	1.41	58.28	59.81	57.49	57.56	0.07	0.12	-2.25	-3.77			
<b>United States</b>	2.04	2.05	1.89	1.89	4.50	4.53	4.58	4.58	9.19	9.27	8.67	8.67	0.00	0.00	-0.60	-6.45			
<b>Total Foreign</b>	37.51	38.07	38.92	38.92	1.31	1.33	1.25	1.26	49.09	50.54	48.82	48.89	0.07	0.14	-1.66	-3.27			
<b>Africa</b>																			
Nigeria	5.82	5.80	5.90	5.90	1.19	1.17	1.17	1.17	6.94	6.80	6.90	6.90	0.00	0.00	0.10	1.47			
Ethiopia	1.90	1.90	1.90	1.90	2.72	2.71	2.74	2.74	5.17	5.15	5.20	5.20	0.00	0.00	0.05	0.97			
Sudan	5.41	7.00	7.00	7.00	0.69	0.71	0.57	0.57	3.74	4.95	4.00	4.00	0.00	0.00	-0.95	-19.24			
Burkina	1.67	1.80	1.80	1.80	0.82	1.07	1.00	1.00	1.37	1.93	1.80	1.80	0.00	0.00	-0.13	-6.74			
Mali	1.39	1.50	1.50	1.50	1.03	0.98	0.87	0.87	1.42	1.47	1.30	1.30	0.00	0.00	-0.17	-11.56			
Niger	3.82	3.70	3.70	3.70	0.51	0.57	0.51	0.51	1.95	2.10	1.90	1.90	0.00	0.00	-0.20	-9.52			
Cameroon	0.85	0.85	0.85	0.85	1.59	1.41	1.41	1.41	1.35	1.20	1.20	1.20	0.00	0.00	0.00	0.00			
Tanzania	0.78	0.80	0.80	0.80	0.96	0.84	1.00	1.00	0.76	0.67	0.80	0.80	0.00	0.00	0.13	19.05			
Egypt	0.14	0.14	0.14	0.14	5.36	5.36	5.36	5.36	0.75	0.75	0.75	0.75	0.00	0.00	0.00	0.00			
Uganda	0.42	0.42	0.41	0.41	0.75	0.98	0.93	0.93	0.32	0.41	0.38	0.38	0.00	0.00	-0.03	-7.54			
Ghana	0.25	0.25	0.25	0.25	1.11	1.26	1.12	1.12	0.28	0.32	0.28	0.28	0.00	0.00	-0.04	-11.39			
Mozambique	0.21	0.25	0.30	0.30	1.19	1.18	1.08	1.08	0.25	0.30	0.33	0.33	0.00	0.00	0.03	10.17			
South Africa	0.03	0.05	0.05	0.05	3.97	2.70	2.67	2.67	0.12	0.14	0.12	0.12	0.00	0.00	-0.02	-11.11			
<b>Mexico</b>	1.35	1.35	1.35	1.35	3.37	3.48	3.33	3.33	4.55	4.70	4.50	4.50	0.00	0.00	-0.20	-4.26			
<b>South America</b>																			
Argentina	0.70	0.63	0.58	0.58	4.29	3.97	4.35	4.35	3.00	2.50	2.50	2.50	0.00	0.00	0.00	0.00			
Brazil	0.78	0.73	0.73	0.73	2.73	2.97	2.88	2.88	2.14	2.18	2.10	2.10	0.00	0.00	-0.08	-3.54			
<b>South Asia</b>																			
India	5.02	4.01	5.00	5.00	0.96	0.94	0.90	0.90	4.80	3.76	4.50	4.50	0.00	0.00	0.74	19.68			
Pakistan	0.26	0.24	0.24	0.24	0.60	0.59	0.58	0.58	0.15	0.14	0.14	0.14	0.00	0.00	0.00	0.00			
<b>China</b>	0.51	0.72	0.75	0.75	4.87	4.79	4.80	4.80	2.47	3.45	3.60	3.60	0.00	0.00	0.15	4.35			
<b>Australia</b>	0.46	0.50	0.25	0.25	2.72	2.58	1.60	1.60	1.26	1.28	0.40	0.40	0.00	0.00	-0.88	-68.70			
<b>European Union</b>	0.12	0.14	0.16	0.16	5.32	5.46	5.22	5.22	0.66	0.74	0.82	0.82	0.00	0.00	0.08	11.26			
<b>Others</b>	5.61	5.30	5.27	5.27	1.01	1.06	1.01	1.02	5.66	5.62	5.30	5.37	0.07	1.32	-0.25	-4.38			

World and Selected Countries and Regions



**Table 09 Rice Area, Yield, and Production**  
**World and Selected Countries and Regions**

Country / Region	Area (Million hectares)				Yield (Metric tons per hectare)				Production (Million metric tons)				Change in Production			
	Prel.		2019/20 Proj.		Prel.		2019/20 Proj.		Prel.		2019/20 Proj.		From last month		From last year	
	2017/18	2018/19	Jan	Feb	2017/18	2018/19	Jan	Feb	2017/18	2018/19	Jan	Feb	MMT	Percent	MMT	Percent
<b>World</b>	162.95	162.71	161.29	161.18	4.53	4.58	4.60	4.60	494.83	499.18	496.67	496.22	-0.45	-0.09	-2.97	-0.59
<b>United States</b>	0.96	1.18	1.00	1.00	8.41	8.62	8.38	8.38	5.66	7.11	5.86	5.86	0.00	0.00	-1.24	-17.49
<b>Total Foreign</b>	161.99	161.53	160.29	160.18	4.51	4.55	4.58	4.57	489.17	492.08	490.80	490.35	-0.45	-0.09	-1.72	-0.35
<b>East Asia</b>																
China	30.75	30.19	29.69	29.69	6.92	7.03	7.06	7.06	148.87	148.49	146.73	146.73	0.00	0.00	-1.76	-1.19
Japan	1.56	1.55	1.55	1.55	6.87	6.79	6.93	6.93	7.79	7.66	7.80	7.80	0.00	0.00	0.14	1.87
Korea, South	0.76	0.74	0.73	0.73	7.01	6.99	6.84	6.84	3.97	3.87	3.74	3.74	0.00	0.00	-0.12	-3.21
Korea, North	0.48	0.50	0.50	0.50	5.09	4.18	4.18	4.18	1.57	1.36	1.36	1.36	0.00	0.00	0.00	0.00
<b>South Asia</b>																
India	43.77	43.80	43.50	43.50	3.86	3.99	3.97	3.97	112.76	116.42	115.00	115.00	0.00	0.00	-1.42	-1.22
Bangladesh	11.27	11.77	11.83	11.83	4.35	4.45	4.55	4.55	32.65	34.91	35.85	35.85	0.00	0.00	0.94	2.70
Pakistan	2.80	2.88	2.90	2.90	4.02	3.80	3.88	3.88	7.50	7.30	7.50	7.50	0.00	0.00	0.20	2.74
Nepal	1.49	1.50	1.50	1.50	3.34	3.73	3.53	3.53	3.31	3.73	3.53	3.53	0.00	0.00	-0.20	-5.36
Sri Lanka	0.77	0.98	1.00	0.90	4.30	4.72	4.50	4.44	2.25	3.13	3.06	2.72	-0.34	-11.11	-0.41	-13.13
<b>Southeast Asia</b>																
Indonesia	12.25	12.10	12.00	12.00	4.76	4.78	4.79	4.79	37.00	36.70	36.50	36.50	0.00	0.00	-0.20	-0.54
Vietnam	7.65	7.62	7.67	7.67	5.79	5.83	5.91	5.91	27.66	27.77	28.30	28.30	0.00	0.00	0.53	1.92
Thailand	10.76	10.83	10.00	10.00	2.90	2.85	2.80	2.80	20.58	20.34	18.50	18.50	0.00	0.00	-1.84	-9.05
Burma	7.10	7.10	7.10	7.10	2.90	2.90	2.93	2.93	13.20	13.18	13.30	13.30	0.00	0.00	0.13	0.95
Philippines	4.84	4.74	4.70	4.70	4.01	3.93	4.05	4.05	12.24	11.73	12.00	12.00	0.00	0.00	0.27	2.28
Cambodia	3.18	3.24	3.19	3.19	2.86	2.91	2.92	2.92	5.55	5.74	5.69	5.69	0.00	0.00	-0.05	-0.94
Laos	0.96	0.86	0.99	0.99	3.29	3.12	3.30	3.30	2.00	1.68	2.05	2.05	0.00	0.00	0.37	22.02
Malaysia	0.70	0.70	0.70	0.70	4.03	4.01	4.01	4.01	1.82	1.83	1.83	1.83	0.00	0.00	0.00	0.00
<b>South America</b>																
Brazil	1.97	1.70	1.68	1.68	6.12	6.18	6.25	6.25	8.20	7.14	7.14	7.14	0.00	0.00	0.00	0.00
Peru	0.42	0.44	0.42	0.42	7.20	7.16	7.51	7.51	2.10	2.15	2.15	2.15	0.00	0.00	0.00	0.00
<b>Africa</b>																
Egypt	0.76	0.46	0.76	0.76	8.18	8.78	8.20	8.20	4.30	2.80	4.30	4.30	0.00	0.00	1.50	53.57
Madagascar	1.43	1.50	1.50	1.50	2.18	2.67	2.80	2.80	1.98	2.56	2.69	2.69	0.00	0.00	0.13	5.00
Nigeria	3.60	3.60	3.60	3.60	2.08	2.11	2.16	2.16	4.73	4.79	4.90	4.90	0.00	0.00	0.11	2.34
<b>European Union</b>	0.43	0.41	0.42	0.42	6.79	6.81	6.86	6.75	2.03	1.96	2.00	1.97	-0.04	-1.75	0.01	0.51
<b>Iran</b>	0.57	0.58	0.58	0.58	5.33	5.25	5.25	5.25	2.01	1.99	1.99	1.99	0.00	0.00	0.00	0.00
<b>Others</b>	11.73	11.76	11.80	11.79	2.99	2.96	2.95	2.95	23.10	22.86	22.89	22.82	-0.08	-0.33	-0.04	-0.19

Yield is on a rough basis, before the milling process. Production is on a milled basis, after the milling process.

**Table 10 Total Oilseed Area, Yield, and Production**

**World and Selected Countries and Regions**

Country / Region	Area (Million hectares)				Yield (Metric tons per hectare)				Production (Million metric tons)				Change in Production			
	Prel.		2019/20 Proj.		Prel.		2019/20 Proj.		Prel.		2019/20 Proj.		From last month		From last year	
	2017/18	2018/19	Jan	Feb	2017/18	2018/19	Jan	Feb	2017/18	2018/19	Jan	Feb	MMT	Percent	MMT	Percent
<b>World Total</b>	--	--	--	--	--	--	--	--	581.54	597.23	574.63	576.82	2.19	0.38	-20.41	-3.42
<b>Total Foreign</b>	--	--	--	--	--	--	--	--	450.06	466.52	467.21	469.40	2.19	0.47	2.88	0.62
<b>Oilseed, Copra</b>	--	--	--	--	--	--	--	--	5.94	5.98	5.81	5.81	0.00	0.00	-0.17	-2.84
<b>Oilseed, Palm Kernel</b>	--	--	--	--	--	--	--	--	18.76	19.45	19.82	19.67	-0.15	-0.76	0.22	1.13
<b>Major Oilseeds</b>	247.23	248.83	244.02	243.87	2.25	2.30	2.25	2.26	556.85	571.81	549.00	551.35	2.34	0.43	-20.46	-3.58
<b>United States</b>	42.80	41.42	36.98	36.98	3.07	3.16	2.90	2.90	131.48	130.72	107.42	107.42	0.00	0.00	-23.29	-17.82
<b>Foreign Oilseeds</b>	204.43	207.42	207.04	206.89	2.08	2.13	2.13	2.15	425.37	441.09	441.58	443.92	2.34	0.53	2.83	0.64
<b>South America</b>	61.50	63.43	64.90	64.87	2.99	3.12	3.10	3.13	183.62	197.92	201.51	203.34	1.82	0.91	5.41	2.74
Brazil	36.56	37.75	38.76	38.79	3.44	3.23	3.30	3.35	125.68	121.86	127.76	129.89	2.13	1.66	8.02	6.58
Argentina	18.70	19.20	19.80	19.80	2.27	3.18	2.92	2.92	42.52	61.00	57.86	57.86	0.00	0.00	-3.14	-5.15
Paraguay	3.51	3.78	3.67	3.61	3.03	2.37	2.81	2.77	10.65	8.97	10.31	10.01	-0.30	-2.91	1.04	11.63
Bolivia	1.42	1.52	1.52	1.52	2.06	1.83	1.90	1.90	2.94	2.78	2.89	2.89	0.00	0.00	0.11	3.96
Uruguay	1.15	1.02	1.01	1.01	1.23	2.86	2.28	2.28	1.41	2.92	2.30	2.30	0.00	0.00	-0.62	-21.18
<b>China</b>	24.08	24.01	25.20	25.20	2.48	2.50	2.49	2.49	59.60	59.95	62.63	62.63	0.00	0.00	2.68	4.47
<b>South Asia</b>	38.34	39.51	39.81	39.71	1.02	0.99	0.98	0.99	39.02	38.95	39.13	39.13	0.00	0.00	0.18	0.46
India	34.87	36.40	36.48	36.38	0.99	0.96	0.98	0.98	34.64	34.78	35.59	35.59	0.00	0.00	0.82	2.36
Pakistan	3.11	2.75	2.98	2.98	1.27	1.37	1.05	1.05	3.96	3.75	3.12	3.12	0.00	0.00	-0.64	-17.00
<b>European Union</b>	12.41	12.39	11.18	11.18	2.85	2.64	2.68	2.68	35.34	32.76	29.98	29.98	0.00	0.00	-2.78	-8.50
<b>Former Soviet Union - 12</b>	24.41	25.62	25.68	25.70	1.66	1.80	1.91	1.93	40.54	46.11	49.06	49.49	0.43	0.88	3.38	7.33
Russia	10.66	12.18	12.80	12.80	1.45	1.54	1.70	1.70	15.48	18.73	21.70	21.70	0.00	0.00	2.97	15.88
Ukraine	9.61	9.38	9.03	9.08	2.07	2.42	2.49	2.53	19.90	22.68	22.50	23.00	0.50	2.22	0.32	1.41
Uzbekistan	1.25	1.10	1.05	1.05	1.21	1.17	1.31	1.31	1.51	1.28	1.37	1.37	0.00	0.00	0.09	6.94
<b>Canada</b>	12.23	11.69	10.63	10.63	2.38	2.37	2.36	2.36	29.10	27.67	25.06	25.06	0.00	0.00	-2.60	-9.41
<b>Africa</b>	21.35	22.05	21.52	21.47	0.99	1.04	0.96	0.97	21.22	22.86	20.69	20.78	0.08	0.41	-2.09	-9.12
Nigeria	4.09	4.09	4.07	4.07	1.31	1.36	1.16	1.16	5.34	5.58	4.70	4.70	0.00	0.00	-0.88	-15.70
South Africa	1.48	1.31	1.51	1.51	1.73	1.51	1.57	1.57	2.55	1.97	2.37	2.37	0.00	0.00	0.40	20.12
Tanzania	1.35	1.42	1.50	1.45	0.89	0.89	0.85	0.91	1.20	1.26	1.28	1.32	0.04	3.45	0.06	4.43
<b>Southeast Asia</b>	3.32	3.34	3.15	3.15	1.42	1.39	1.39	1.39	4.71	4.64	4.39	4.39	0.00	0.00	-0.26	-5.51
Indonesia	1.00	0.98	0.95	0.95	1.61	1.57	1.58	1.58	1.62	1.55	1.50	1.50	0.00	0.00	-0.05	-2.91
Burma	1.98	2.02	1.88	1.88	1.22	1.20	1.18	1.18	2.42	2.43	2.21	2.21	0.00	0.00	-0.21	-8.81
<b>Australia</b>	3.76	2.33	1.91	1.91	1.44	1.25	1.19	1.19	5.43	2.92	2.28	2.28	0.00	0.00	-0.64	-21.90
<b>Turkey</b>	1.25	1.33	1.38	1.38	2.53	2.63	2.32	2.32	3.17	3.49	3.20	3.20	0.00	0.00	-0.28	-8.14
<b>Others</b>	1.77	1.73	1.67	1.67	2.04	2.21	2.18	2.18	3.62	3.82	3.65	3.65	0.00	0.00	-0.17	-4.42

World Total and Total Foreign: (Major Oilseeds plus copra and palm kernel) Major Oilseeds: (soybeans, sunflowerseeds, peanuts(inshell), cottonseed and rapeseed)

**Table 11 Soybean Area, Yield, and Production**

Country / Region	Area (Million hectares)				Yield (Metric tons per hectare)				Production (Million metric tons)				Change in Production			
	Prel.		2019/20 Proj.		Prel.		2019/20 Proj.		Prel.		2019/20 Proj.		From last month		From last year	
	2017/18	2018/19	Jan	Feb	2017/18	2018/19	Jan	Feb	2017/18	2018/19	Jan	Feb	MMT	Percent	MMT	Percent
<b>World</b>	124.52	125.64	122.73	122.72	2.75	2.85	2.75	2.77	342.09	358.65	337.70	339.40	1.70	0.50	-19.24	-5.37
<b>United States</b>	36.24	35.45	30.36	30.36	3.31	3.40	3.19	3.19	120.07	120.52	96.84	96.84	0.00	0.00	-23.67	-19.64
<b>Total Foreign</b>	88.29	90.19	92.37	92.36	2.51	2.64	2.61	2.63	222.02	238.13	240.86	242.56	1.70	0.71	4.43	1.86
<b>South America</b>																
Brazil	35.15	35.90	36.90	36.90	3.47	3.26	3.33	3.39	122.00	117.00	123.00	125.00	2.00	1.63	8.00	6.84
Argentina	16.30	16.60	17.50	17.50	2.32	3.33	3.03	3.03	37.80	55.30	53.00	53.00	0.00	0.00	-2.30	-4.16
Paraguay	3.38	3.70	3.60	3.54	3.10	2.39	2.83	2.80	10.48	8.85	10.20	9.90	-0.30	-2.94	1.05	11.86
Bolivia	1.32	1.40	1.40	1.40	2.14	1.93	2.00	2.00	2.82	2.70	2.80	2.80	0.00	0.00	0.10	3.70
Uruguay	1.10	0.97	0.95	0.95	1.21	2.93	2.32	2.32	1.33	2.83	2.20	2.20	0.00	0.00	-0.63	-22.21
<b>East Asia</b>																
China	8.25	8.41	9.30	9.30	1.85	1.90	1.95	1.95	15.28	15.97	18.10	18.10	0.00	0.00	2.13	13.36
Korea, South	0.05	0.05	0.05	0.05	1.87	1.75	1.80	1.80	0.09	0.09	0.09	0.09	0.00	0.00	0.00	3.37
Korea, North	0.15	0.15	0.15	0.15	1.49	1.50	1.50	1.50	0.22	0.23	0.23	0.23	0.00	0.00	0.00	0.00
Japan	0.15	0.15	0.15	0.15	1.66	1.45	1.69	1.69	0.25	0.21	0.25	0.25	0.00	0.00	0.04	18.78
<b>India</b>	10.40	11.33	11.25	11.25	0.80	0.96	0.80	0.80	8.35	10.93	9.00	9.00	0.00	0.00	-1.93	-17.66
<b>Canada</b>	2.94	2.54	2.30	2.30	2.63	2.86	2.61	2.61	7.72	7.27	6.00	6.00	0.00	0.00	-1.27	-17.43
<b>Former Soviet Union - 12</b>																
Russia	2.57	2.74	2.90	2.90	1.41	1.47	1.48	1.48	3.62	4.03	4.30	4.30	0.00	0.00	0.27	6.78
Ukraine	2.02	1.88	1.55	1.60	1.97	2.58	2.39	2.31	3.99	4.83	3.70	3.70	0.00	0.00	-1.13	-23.41
<b>European Union</b>	0.93	0.93	0.91	0.91	2.74	2.88	2.86	2.86	2.54	2.66	2.60	2.60	0.00	0.00	-0.06	-2.40
<b>Southeast Asia</b>																
Indonesia	0.42	0.41	0.40	0.40	1.29	1.27	1.28	1.28	0.54	0.52	0.51	0.51	0.00	0.00	-0.01	-1.92
Vietnam	0.06	0.05	0.05	0.05	1.50	1.53	1.52	1.52	0.09	0.08	0.08	0.08	0.00	0.00	-0.01	-6.17
Thailand	0.04	0.04	0.03	0.03	1.57	1.57	1.53	1.53	0.06	0.06	0.05	0.05	0.00	0.00	0.00	-5.45
Burma	0.14	0.15	0.15	0.15	1.04	1.07	1.07	1.07	0.15	0.16	0.16	0.16	0.00	0.00	0.00	0.00
<b>Serbia</b>	0.20	0.22	0.22	0.22	2.30	2.84	2.73	2.73	0.46	0.63	0.60	0.60	0.00	0.00	-0.03	-4.00
<b>Mexico</b>	0.26	0.19	0.15	0.15	1.65	1.75	1.57	1.57	0.43	0.34	0.24	0.24	0.00	0.00	-0.10	-29.85
<b>Africa</b>																
South Africa	0.79	0.73	0.80	0.80	1.96	1.60	1.81	1.81	1.54	1.17	1.45	1.45	0.00	0.00	0.28	23.93
Nigeria	1.00	1.00	1.00	1.00	0.99	1.05	1.10	1.10	0.99	1.05	1.10	1.10	0.00	0.00	0.05	4.36
Zambia	0.23	0.19	0.20	0.20	1.56	1.58	1.43	1.43	0.35	0.30	0.28	0.28	0.00	0.00	-0.02	-7.26
Uganda	0.05	0.05	0.05	0.05	0.60	0.60	0.60	0.60	0.03	0.03	0.03	0.03	0.00	0.00	0.00	0.00
<b>Middle East</b>																
Iran	0.08	0.07	0.07	0.07	2.41	2.29	2.43	2.43	0.20	0.16	0.17	0.17	0.00	0.00	0.01	6.25
Turkey	0.02	0.03	0.03	0.03	3.75	3.80	3.89	3.89	0.09	0.10	0.11	0.11	0.00	0.00	0.01	10.53
<b>Others</b>	0.31	0.33	0.32	0.32	1.95	1.98	1.97	1.97	0.61	0.65	0.62	0.62	0.00	0.00	-0.03	-4.29

World and Selected Countries and Regions

**Table 12 Cottonseed Area, Yield, and Production**

Country / Region	Area (Million hectares)				Yield (Metric tons per hectare)				Production (Million metric tons)				Change in Production			
	2017/18	Prel.	2019/20 Proj.		2017/18	Prel.	2019/20 Proj.		2017/18	Prel.	2019/20 Proj.		From last month		From last year	
		2018/19	Jan	Feb		2018/19	Jan	Feb		2018/19	Jan	Feb	MMT	Percent	MMT	Percent
<b>World</b>	33.10	32.83	33.83	33.81	1.36	1.32	1.30	1.31	45.15	43.49	44.09	44.30	0.21	0.48	0.82	1.88
<b>United States</b>	4.49	4.13	4.78	4.78	1.30	1.24	1.18	1.18	5.83	5.11	5.65	5.65	0.00	0.00	0.55	10.69
<b>Total Foreign</b>	28.60	28.70	29.05	29.03	1.37	1.34	1.32	1.33	39.32	38.38	38.44	38.65	0.21	0.55	0.27	0.71
<b>South Asia</b>																
India	12.60	12.60	13.00	13.00	0.98	0.87	0.96	0.96	12.31	10.95	12.52	12.52	0.00	0.00	1.57	14.34
Pakistan	2.70	2.30	2.50	2.50	1.32	1.43	1.06	1.06	3.55	3.29	2.64	2.64	0.00	0.00	-0.65	-19.74
<b>China</b>	3.40	3.50	3.45	3.45	3.18	3.11	3.10	3.10	10.80	10.88	10.68	10.68	0.00	0.00	-0.20	-1.80
<b>Former Soviet Union - 12</b>																
Uzbekistan	1.25	1.10	1.05	1.05	1.21	1.17	1.31	1.31	1.51	1.28	1.37	1.37	0.00	0.00	0.09	6.94
Turkmenistan	0.55	0.55	0.55	0.55	0.96	0.65	0.72	0.72	0.53	0.36	0.39	0.39	0.00	0.00	0.04	9.83
Tajikistan	0.19	0.18	0.18	0.18	0.97	0.90	0.94	0.94	0.18	0.16	0.17	0.17	0.00	0.00	0.01	4.94
Kazakhstan	0.13	0.13	0.12	0.12	0.94	1.05	1.21	1.21	0.12	0.14	0.14	0.14	0.00	0.00	0.01	4.44
<b>South America</b>																
Brazil	1.18	1.64	1.62	1.65	2.57	2.63	2.52	2.56	3.02	4.32	4.09	4.22	0.13	3.08	-0.10	-2.32
Argentina	0.32	0.38	0.36	0.36	0.87	1.09	1.03	1.03	0.28	0.41	0.37	0.37	0.00	0.00	-0.04	-10.63
<b>Middle East</b>																
Turkey	0.47	0.52	0.56	0.56	2.77	2.60	1.98	1.98	1.30	1.35	1.11	1.11	0.00	0.00	-0.24	-17.78
Syria	0.03	0.03	0.03	0.03	2.17	2.36	2.40	2.40	0.07	0.06	0.06	0.06	0.00	0.00	0.00	1.69
Iran	0.09	0.08	0.08	0.08	0.96	1.16	1.16	1.16	0.08	0.09	0.09	0.09	0.00	0.00	0.00	0.00
<b>Australia</b>	0.53	0.38	0.06	0.06	2.72	1.74	3.37	3.37	1.44	0.66	0.20	0.20	0.00	0.00	-0.46	-69.44
<b>European Union</b>	0.30	0.31	0.35	0.35	1.65	1.76	1.81	1.81	0.49	0.55	0.63	0.63	0.00	0.00	0.08	14.00
<b>Africa</b>																
Burkina	0.85	0.63	0.58	0.58	0.39	0.37	0.48	0.48	0.33	0.24	0.28	0.28	0.00	0.00	0.04	17.45
Mali	0.71	0.73	0.74	0.74	0.56	0.50	0.52	0.52	0.40	0.36	0.38	0.38	0.00	0.00	0.02	6.41
Cameroon	0.23	0.25	0.26	0.26	1.11	1.20	1.24	1.24	0.25	0.30	0.32	0.32	0.00	0.00	0.02	7.33
Cote d'Ivoire	0.33	0.39	0.43	0.43	0.66	0.64	0.63	0.63	0.22	0.25	0.27	0.27	0.00	0.00	0.02	6.80
Benin	0.53	0.65	0.68	0.68	0.71	0.71	0.71	0.71	0.38	0.46	0.48	0.48	0.00	0.00	0.02	3.46
Tanzania	0.35	0.42	0.50	0.45	0.29	0.39	0.35	0.49	0.10	0.16	0.18	0.22	0.04	25.14	0.06	34.36
Egypt	0.09	0.14	0.10	0.10	1.00	1.08	1.06	1.06	0.09	0.15	0.11	0.11	0.00	0.00	-0.05	-30.26
Nigeria	0.27	0.27	0.27	0.27	0.38	0.38	0.38	0.38	0.10	0.10	0.10	0.10	0.00	0.00	0.00	0.00
Uganda	0.08	0.07	0.08	0.08	1.95	1.91	1.45	1.99	0.15	0.14	0.11	0.15	0.04	36.70	0.01	5.67
Zimbabwe	0.20	0.20	0.20	0.20	0.52	0.38	0.36	0.36	0.10	0.08	0.07	0.07	0.00	0.00	0.00	-5.26
Sudan	0.18	0.18	0.20	0.20	1.35	1.42	1.54	1.54	0.24	0.26	0.31	0.31	0.00	0.00	0.05	20.78
<b>Mexico</b>	0.21	0.24	0.23	0.23	2.52	2.44	2.37	2.37	0.53	0.59	0.53	0.53	0.00	0.00	-0.06	-10.12
<b>Burma</b>	0.25	0.24	0.24	0.24	1.24	1.23	1.20	1.20	0.31	0.30	0.29	0.29	0.00	0.00	-0.01	-2.03
<b>Others</b>	0.63	0.59	0.68	0.68	0.72	0.84	0.81	0.81	0.45	0.49	0.55	0.55	0.00	0.00	0.05	10.93

World and Selected Countries and Regions

**Table 13 Peanut Area, Yield, and Production**

Country / Region	Area (Million hectares)				Yield (Metric tons per hectare)				Production (Million metric tons)				Change in Production			
	2017/18	Prel.	2019/20 Proj.		2017/18	Prel.	2019/20 Proj.		2017/18	Prel.	2019/20 Proj.		From last month		From last year	
		2018/19	Jan	Feb		2018/19	Jan	Feb		2018/19	Jan	Feb	MMT	Percent	MMT	Percent
<b>World</b>	27.14	27.84	26.51	26.51	1.72	1.68	1.71	1.71	46.78	46.75	45.44	45.44	0.00	0.00	-1.31	-2.79
<b>United States</b>	0.72	0.56	0.56	0.56	4.49	4.48	4.43	4.43	3.23	2.49	2.49	2.49	0.00	0.00	0.00	0.00
<b>Total Foreign</b>	26.42	27.29	25.95	25.95	1.65	1.62	1.66	1.66	43.55	44.26	42.95	42.95	0.00	0.00	-1.31	-2.95
<b>China</b>	4.61	4.62	4.60	4.60	3.71	3.75	3.80	3.80	17.09	17.33	17.50	17.50	0.00	0.00	0.17	0.96
<b>Africa</b>																
Nigeria	2.82	2.82	2.80	2.80	1.51	1.57	1.25	1.25	4.25	4.42	3.50	3.50	0.00	0.00	-0.92	-20.85
Sudan	2.22	3.07	2.30	2.30	0.74	0.94	0.78	0.78	1.65	2.88	1.80	1.80	0.00	0.00	-1.08	-37.59
Senegal	1.25	1.25	1.20	1.20	1.13	1.16	0.92	0.92	1.41	1.45	1.10	1.10	0.00	0.00	-0.35	-24.14
Cameroon	0.43	0.43	0.43	0.43	1.40	1.40	1.40	1.40	0.60	0.60	0.60	0.60	0.00	0.00	0.00	0.00
Ghana	0.34	0.34	0.34	0.34	1.28	1.55	1.31	1.31	0.43	0.52	0.44	0.44	0.00	0.00	-0.08	-15.38
Chad	0.77	0.77	0.77	0.77	1.13	1.16	1.10	1.10	0.87	0.89	0.85	0.85	0.00	0.00	-0.04	-4.49
Malawi	0.39	0.37	0.37	0.37	0.99	0.88	0.88	0.88	0.39	0.33	0.33	0.33	0.00	0.00	0.00	0.00
Congo (Kinshasa)	0.50	0.50	0.50	0.50	0.85	0.85	0.85	0.85	0.42	0.42	0.42	0.42	0.00	0.00	0.00	0.00
Niger	0.92	0.93	0.90	0.90	0.50	0.64	0.56	0.56	0.46	0.59	0.50	0.50	0.00	0.00	-0.09	-15.54
Mali	0.39	0.38	0.43	0.43	0.78	1.31	1.00	1.00	0.30	0.49	0.43	0.43	0.00	0.00	-0.07	-13.44
Uganda	0.43	0.43	0.43	0.43	0.71	0.71	0.71	0.71	0.30	0.30	0.30	0.30	0.00	0.00	0.00	0.00
Burkina	0.56	0.56	0.56	0.56	0.60	0.59	0.80	0.80	0.33	0.33	0.45	0.45	0.00	0.00	0.12	36.36
Guinea	0.67	0.68	0.68	0.68	1.04	1.13	1.10	1.10	0.70	0.77	0.75	0.75	0.00	0.00	-0.02	-2.60
Egypt	0.06	0.06	0.06	0.06	3.20	3.20	3.20	3.20	0.21	0.21	0.21	0.21	0.00	0.00	0.00	0.00
Central African Republic	0.10	0.10	0.10	0.10	1.50	1.50	1.50	1.50	0.15	0.15	0.15	0.15	0.00	0.00	0.00	0.00
South Africa	0.06	0.02	0.05	0.05	1.36	1.25	1.50	1.50	0.08	0.03	0.08	0.08	0.00	0.00	0.05	200.00
Mozambique	0.40	0.38	0.38	0.38	0.23	0.34	0.34	0.34	0.09	0.13	0.13	0.13	0.00	0.00	0.00	0.00
Cote d'Ivoire	0.15	0.15	0.15	0.15	1.39	1.45	1.45	1.45	0.20	0.21	0.21	0.21	0.00	0.00	0.00	0.00
Benin	0.16	0.19	0.19	0.19	0.88	1.19	0.92	0.92	0.14	0.23	0.18	0.18	0.00	0.00	-0.05	-22.57
<b>South Asia</b>																
India	4.89	4.99	4.70	4.70	1.36	0.95	1.32	1.32	6.65	4.72	6.20	6.20	0.00	0.00	1.48	31.36
Pakistan	0.09	0.10	0.09	0.09	0.97	0.95	0.98	0.98	0.09	0.09	0.09	0.09	0.00	0.00	0.00	1.11
<b>Southeast Asia</b>																
Indonesia	0.58	0.57	0.55	0.55	1.85	1.80	1.80	1.80	1.08	1.03	0.99	0.99	0.00	0.00	-0.04	-3.41
Burma	0.99	1.03	0.89	0.89	1.59	1.53	1.55	1.55	1.57	1.58	1.38	1.38	0.00	0.00	-0.21	-13.14
Vietnam	0.19	0.19	0.19	0.19	2.37	2.41	2.47	2.47	0.45	0.46	0.47	0.47	0.00	0.00	0.01	2.40
Thailand	0.02	0.02	0.02	0.02	1.67	1.67	1.67	1.67	0.04	0.04	0.04	0.04	0.00	0.00	0.00	0.00
<b>South America</b>																
Argentina	0.38	0.33	0.32	0.32	2.27	4.35	3.92	3.92	0.87	1.42	1.26	1.26	0.00	0.00	-0.16	-11.56
Brazil	0.14	0.15	0.16	0.16	3.71	2.96	3.55	3.55	0.52	0.44	0.55	0.55	0.00	0.00	0.12	26.44
<b>Mexico</b>	0.06	0.06	0.06	0.06	1.70	1.70	1.73	1.73	0.10	0.10	0.10	0.10	0.00	0.00	0.01	5.15
<b>Others</b>	1.88	1.83	1.75	1.75	1.13	1.15	1.13	1.13	2.13	2.12	1.97	1.97	0.00	0.00	-0.14	-6.71

**Table 14 Sunflowerseed Area, Yield, and Production**

Country / Region	Area (Million hectares)				Yield (Metric tons per hectare)				Production (Million metric tons)				Change in Production						
	2017/18	Prel.		2019/20 Proj.		2017/18	Prel.		2019/20 Proj.		2017/18	Prel.		2019/20 Proj.		From last month		From last year	
		2018/19	Jan	Feb	2018/19		Jan	Feb	2018/19	Jan		Feb	MMT	Percent	MMT	Percent			
<b>World</b>	25.92	25.94	26.47	26.43	1.85	1.95	2.04	2.06	47.85	50.56	54.04	54.45	0.41	0.75	3.89	7.69			
<b>United States</b>	0.54	0.49	0.50	0.50	1.80	1.94	1.75	1.75	0.97	0.96	0.88	0.88	0.00	0.00	-0.07	-7.74			
<b>Total Foreign</b>	25.38	25.44	25.97	25.92	1.85	1.95	2.05	2.07	46.88	49.60	53.16	53.56	0.41	0.76	3.96	7.99			
<b>Former Soviet Union - 12</b>																			
Russia	7.15	7.94	8.40	8.40	1.45	1.60	1.82	1.82	10.36	12.71	15.30	15.30	0.00	0.00	2.59	20.38			
Ukraine	6.80	6.50	6.20	6.20	2.01	2.31	2.50	2.58	13.70	15.00	15.50	16.00	0.50	3.23	1.00	6.67			
Kazakhstan	0.88	0.85	0.80	0.80	1.02	1.00	1.00	1.00	0.90	0.85	0.80	0.80	0.00	0.00	-0.05	-5.66			
<b>European Union</b>	4.39	4.12	4.35	4.35	2.30	2.31	2.24	2.24	10.13	9.51	9.75	9.75	0.00	0.00	0.24	2.49			
<b>South America</b>																			
Argentina	1.68	1.88	1.60	1.60	2.11	2.04	2.00	2.00	3.54	3.83	3.20	3.20	0.00	0.00	-0.63	-16.34			
Uruguay	0.05	0.06	0.06	0.06	1.56	1.61	1.67	1.67	0.08	0.09	0.10	0.10	0.00	0.00	0.01	11.11			
Bolivia	0.11	0.12	0.12	0.12	1.11	0.70	0.75	0.75	0.12	0.08	0.09	0.09	0.00	0.00	0.01	12.50			
Brazil	0.10	0.07	0.08	0.08	1.48	1.71	1.50	1.50	0.14	0.11	0.12	0.12	0.00	0.00	0.01	8.11			
Paraguay	0.04	0.03	0.03	0.03	1.59	1.69	1.70	1.70	0.07	0.05	0.05	0.05	0.00	0.00	0.00	-5.56			
<b>China</b>	1.17	0.92	1.25	1.25	2.69	2.71	2.60	2.60	3.15	2.49	3.25	3.25	0.00	0.00	0.76	30.31			
<b>South Asia</b>																			
India	0.28	0.28	0.23	0.23	0.81	0.61	0.76	0.76	0.23	0.17	0.17	0.17	0.00	0.00	0.00	-1.16			
Pakistan	0.08	0.12	0.14	0.14	1.13	1.20	1.04	1.04	0.09	0.14	0.15	0.15	0.00	0.00	0.00	0.69			
<b>Middle East</b>																			
Turkey	0.70	0.72	0.73	0.73	2.21	2.52	2.40	2.40	1.55	1.80	1.75	1.75	0.00	0.00	-0.05	-2.78			
Iran	0.04	0.04	0.04	0.04	1.08	1.08	1.08	1.08	0.04	0.04	0.04	0.04	0.00	0.00	0.00	0.00			
Israel	0.01	0.01	0.01	0.01	1.60	1.60	1.60	1.60	0.02	0.02	0.02	0.02	0.00	0.00	0.00	0.00			
<b>Africa</b>																			
Egypt	0.01	0.01	0.01	0.01	2.38	2.38	2.38	2.38	0.02	0.02	0.02	0.02	0.00	0.00	0.00	0.00			
Morocco	0.02	0.02	0.02	0.02	1.26	1.29	1.25	1.25	0.02	0.03	0.03	0.03	0.00	0.00	0.00	-7.41			
South Africa	0.60	0.52	0.61	0.61	1.43	1.32	1.23	1.23	0.86	0.68	0.75	0.75	0.00	0.00	0.07	10.29			
<b>Burma</b>	0.60	0.60	0.60	0.60	0.65	0.65	0.65	0.65	0.39	0.39	0.39	0.39	0.00	0.00	0.00	0.00			
<b>Canada</b>	0.03	0.03	0.03	0.03	2.23	2.11	2.17	2.17	0.06	0.06	0.06	0.06	0.00	0.00	0.01	10.53			
<b>Australia</b>	0.01	0.02	0.02	0.02	1.86	1.21	1.25	1.25	0.03	0.02	0.03	0.03	0.00	0.00	0.00	8.70			
<b>Others</b>	0.63	0.61	0.64	0.60	2.21	2.49	2.49	2.52	1.38	1.51	1.60	1.51	-0.09	-5.87	0.00	0.07			

World and Selected Countries and Regions

**Table 15 Rapeseed Area, Yield, and Production**

Country / Region	Area (Million hectares)				Yield (Metric tons per hectare)				Production (Million metric tons)				Change in Production			
	2017/18	Prel.	2019/20 Proj.		2017/18	Prel.	2019/20 Proj.		2017/18	Prel.	2019/20 Proj.		From last month		From last year	
		2018/19	Jan	Feb		2018/19	Jan	Feb		2018/19	Jan	Feb	MMT	Percent	MMT	Percent
<b>World</b>	36.55	36.59	34.48	34.40	2.05	1.98	1.96	1.97	74.99	72.37	67.72	67.75	0.03	0.04	-4.62	-6.38
<b>United States</b>	0.81	0.79	0.78	0.78	1.71	2.09	2.00	2.00	1.39	1.64	1.55	1.55	0.00	0.00	-0.09	-5.54
<b>Total Foreign</b>	35.74	35.80	33.70	33.62	2.06	1.98	1.96	1.97	73.60	70.73	66.17	66.20	0.03	0.04	-4.53	-6.40
<b>European Union</b>	6.80	7.03	5.58	5.58	3.26	2.85	3.05	3.05	22.18	20.03	17.00	17.00	0.00	0.00	-3.03	-15.14
<b>Canada</b>	9.27	9.12	8.30	8.30	2.30	2.23	2.29	2.29	21.33	20.34	19.00	19.00	0.00	0.00	-1.34	-6.60
<b>China</b>	6.65	6.55	6.60	6.60	2.00	2.03	1.98	1.98	13.27	13.28	13.10	13.10	0.00	0.00	-0.18	-1.36
<b>South Asia</b>																
India	6.70	7.20	7.30	7.20	1.06	1.11	1.05	1.07	7.10	8.00	7.70	7.70	0.00	0.00	-0.30	-3.75
Pakistan	0.24	0.23	0.24	0.24	0.96	0.98	0.98	0.98	0.23	0.23	0.24	0.24	0.00	0.00	0.01	4.44
Bangladesh	0.25	0.25	0.25	0.25	0.92	0.92	0.92	0.92	0.23	0.23	0.23	0.23	0.00	0.00	0.00	0.00
<b>Former Soviet Union - 12</b>																
Russia	0.95	1.50	1.50	1.50	1.58	1.33	1.40	1.40	1.50	1.99	2.10	2.10	0.00	0.00	0.11	5.58
Ukraine	0.79	1.00	1.28	1.28	2.80	2.85	2.58	2.58	2.22	2.85	3.30	3.30	0.00	0.00	0.45	15.79
Belarus	0.33	0.35	0.30	0.30	1.81	1.31	1.63	1.63	0.60	0.46	0.49	0.49	0.00	0.00	0.03	7.46
Kazakhstan	0.25	0.37	0.28	0.28	1.11	1.08	1.14	1.14	0.28	0.39	0.32	0.32	0.00	0.00	-0.07	-18.78
<b>Australia</b>	3.17	1.89	1.80	1.80	1.23	1.15	1.11	1.11	3.89	2.18	2.00	2.00	0.00	0.00	-0.18	-8.26
<b>South America</b>																
Chile	0.06	0.05	0.04	0.04	3.89	3.85	4.10	4.10	0.22	0.19	0.17	0.17	0.00	0.00	-0.01	-7.03
Paraguay	0.08	0.04	0.03	0.03	1.25	1.50	1.87	1.87	0.10	0.06	0.06	0.06	0.00	0.00	0.00	-6.67
<b>Switzerland</b>	0.02	0.02	0.02	0.02	3.14	3.14	3.14	3.14	0.07	0.07	0.07	0.07	0.00	0.00	0.00	0.00
<b>Ethiopia</b>	0.03	0.04	0.04	0.04	1.82	1.57	1.86	1.86	0.05	0.06	0.07	0.07	0.00	0.00	0.01	18.18
<b>Others</b>	0.15	0.18	0.15	0.17	2.17	2.14	2.23	2.15	0.33	0.38	0.33	0.36	0.03	7.49	-0.02	-4.27

World and Selected Countries and Regions

**Table 16 Copra, Palm Kernel, and Palm Oil Production**

Country / Region	Production (Million metric tons)				Change in Production			
	2017/18	Prel.	2019/20 Proj.		From last month		From last year	
		2018/19	Jan	Feb	MMT	Percent	MMT	Percent
<b>Oilseed, Copra</b>								
Philippines	2.60	2.63	2.50	2.50	0.00	0.00	-0.13	-4.94
Indonesia	1.65	1.64	1.60	1.60	0.00	0.00	-0.04	-2.44
India	0.75	0.75	0.75	0.75	0.00	0.00	0.00	0.00
Vietnam	0.28	0.29	0.29	0.29	0.00	0.00	0.00	0.00
Mexico	0.21	0.22	0.22	0.22	0.00	0.00	0.00	0.00
Papua New Guinea	0.10	0.10	0.10	0.10	0.00	0.00	0.00	0.00
Thailand	0.07	0.07	0.07	0.07	0.00	0.00	0.00	0.00
Sri Lanka	0.07	0.07	0.07	0.07	0.00	0.00	0.00	0.00
Solomon Islands	0.03	0.03	0.03	0.03	0.00	0.00	0.00	0.00
Cote d'Ivoire	0.03	0.03	0.03	0.03	0.00	0.00	0.00	0.00
World	5.94	5.98	5.81	5.81	0.00	0.00	-0.17	-2.84
<b>Oilseed, Palm Kernel</b>								
Indonesia	10.50	10.90	11.30	11.25	-0.05	-0.44	0.35	3.21
Malaysia	4.92	5.15	5.10	5.00	-0.10	-1.96	-0.15	-2.91
Thailand	0.82	0.87	0.89	0.89	0.00	0.00	0.02	2.30
Nigeria	0.73	0.73	0.73	0.73	0.00	0.00	0.00	0.00
Colombia	0.33	0.33	0.36	0.36	0.00	0.00	0.03	9.09
Guatemala	0.17	0.17	0.17	0.17	0.00	0.00	0.00	0.00
Papua New Guinea	0.16	0.16	0.13	0.13	0.00	0.00	-0.03	-18.75
Honduras	0.14	0.14	0.14	0.14	0.00	0.00	0.00	0.00
Brazil	0.13	0.14	0.14	0.14	0.00	0.00	0.00	0.00
Cote d'Ivoire	0.12	0.12	0.12	0.12	0.00	0.00	0.00	0.00
World	18.76	19.45	19.82	19.67	-0.15	-0.76	0.22	1.13
<b>Oil, Palm</b>								
Indonesia	39.50	41.50	43.00	42.50	-0.50	-1.16	1.00	2.41
Malaysia	19.68	20.80	20.50	19.80	-0.70	-3.41	-1.00	-4.81
Thailand	2.78	2.90	3.00	3.00	0.00	0.00	0.10	3.45
Colombia	1.63	1.63	1.68	1.68	0.00	0.00	0.06	3.70
Nigeria	1.03	1.02	1.02	1.02	0.00	0.00	0.00	0.00
Guatemala	0.85	0.85	0.85	0.85	0.00	0.00	0.00	0.00
Papua New Guinea	0.65	0.65	0.51	0.51	0.00	0.00	-0.14	-21.54
Ecuador	0.57	0.58	0.63	0.63	0.00	0.00	0.05	8.62
Honduras	0.58	0.58	0.58	0.58	0.00	0.00	0.00	0.00
Brazil	0.50	0.53	0.54	0.54	0.00	0.00	0.02	3.85
World	70.63	73.90	75.19	73.99	-1.20	-1.60	0.09	0.12

World and Selected Countries and Regions





**TABLE 18**

The table below presents a record of the February projection and the final Estimate. Using world wheat production as an example, the "root mean square error" means that chances are 2 out of 3 that the current forecast will not be above or below the final estimate by more than 0.6 percent. Chances are 9 out of 10 (90% confidence level) that the difference will not exceed 1 percent. The average difference between the February projection and the final estimate is 2.5 million tons, ranging from 0 million to 7.3 million tons. The February projection has been below the estimate 28 times and above 10 times.

**RELIABILITY OF PRODUCTION PROJECTIONS 1/**

COMMODITY AND REGION	Root mean square error	90 percent confidence interval	Difference between forecast and final estimate				
			Average	Smallest	Largest	Years	
						Below final	Above final
	Percent		---Million metric tons---				
<b>WHEAT</b>							
World	0.6	1.0	2.5	0.0	7.3	28	10
U.S.	0.1	0.2	0.1	0.0	0.3	16	11
Foreign	0.7	1.1	2.5	0.0	7.3	28	10
<b>COARSE GRAINS 2/</b>							
World	1.3	2.3	11.5	0.0	36.3	31	7
U.S.	0.2	0.3	0.1	0.0	1.3	18	7
Foreign	1.9	3.2	11.6	0.0	36.3	29	8
<b>RICE (Milled)</b>							
World	1.6	2.7	4.5	0.1	14.0	30	8
U.S.	1.5	2.5	0.1	0.0	0.3	12	6
Foreign	1.6	2.7	4.4	0.1	14.0	30	8
<b>SOYBEANS</b>							
World	2.7	4.7	4.3	0.4	15.3	22	16
U.S.	1.4	2.3	0.7	0.0	3.2	16	16
Foreign	4.6	7.8	4.4	0.3	14.9	24	14
<b>COTTON</b>			---Million 480-lb. bales---				
World	2.4	4.0	1.7	0.0	5.4	28	10
U.S.	1.0	1.7	0.1	0.0	0.3	14	23
Foreign	2.8	4.8	1.7	0.1	5.7	28	10
<b>UNITED STATES</b>			-----Million bushels-----				
<b>CORN</b>	0.2	0.3	2	0	41	2	2
<b>SORGHUM</b>	0.1	0.2	0	0	4	0	2
<b>BARLEY</b>	0.7	1.3	1	0	11	17	4
<b>OATS</b>	0.3	0.6	0	0	2	4	4

1/ Marketing years 1981/82 through 2018/19. Final for grains, soybeans and cotton is defined as the first *November* estimates following the marketing year for 1981/82 through 2017/18, and for 2018/19 last month's estimate.

2/ Includes corn, sorghum, barley, oats, rye, millet, and mixed grain

February 2020

Global Market Analysis, FAS, USDA