



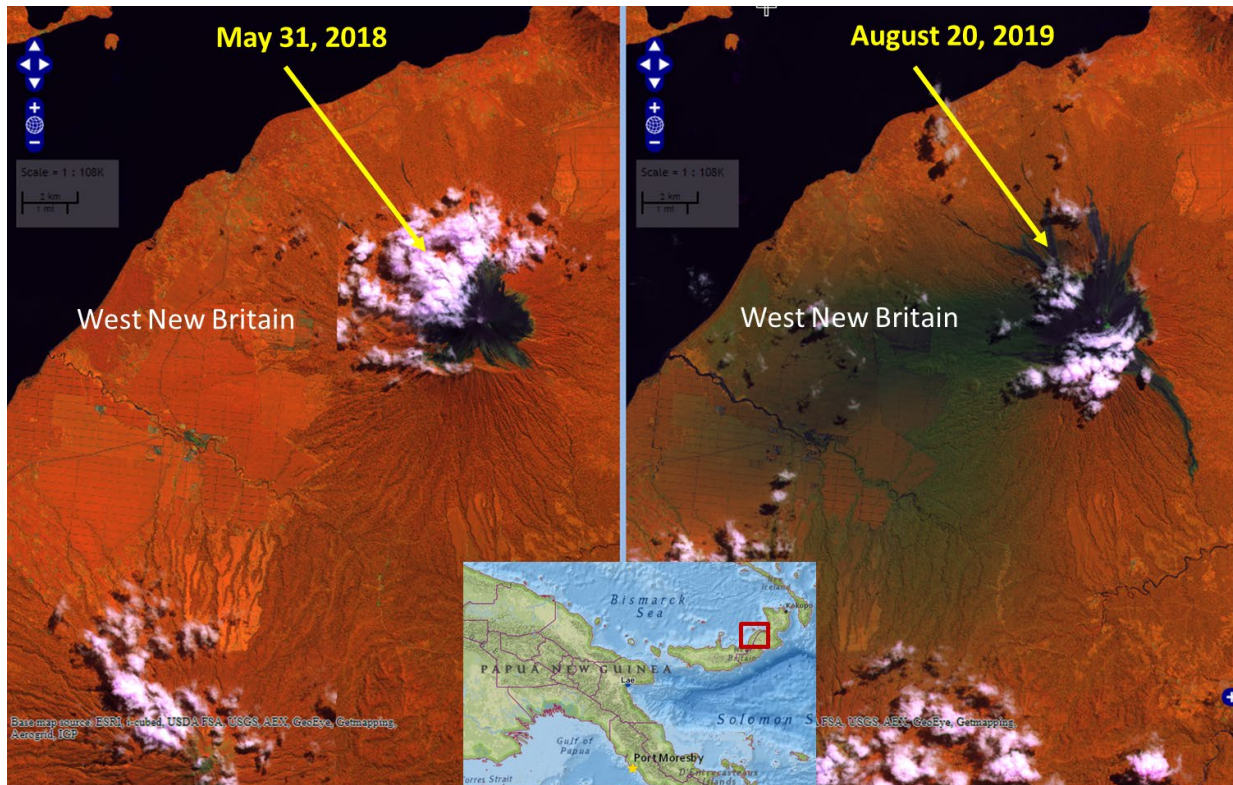
United States  
Department of  
Agriculture

Foreign  
Agricultural  
Service

Circular Series  
WAP 12-19  
December 2019

# World Agricultural Production

## Papua New Guinea: Palm Oil Production Reduced After Volcanic Eruption



**West New Britain, Papua New Guinea (PNG) : Mount Ulawun volcano pre and post eruption  
(NIR / SWIR1 / Red) Satellite Imagery**



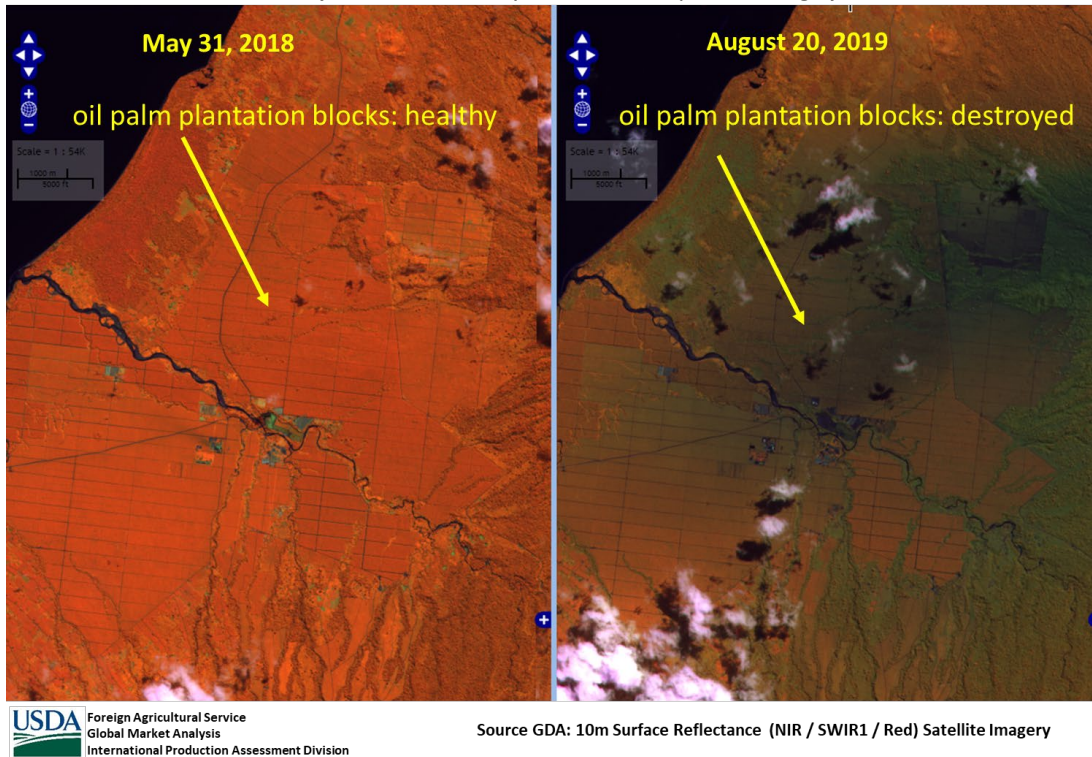
Source GDA: 10m Surface Reflectance (NIR / SWIR1 / Red) Satellite Imagery

USDA estimates Papua New Guinea 2019/20 palm oil production at 510,000 metric tons (mt), down 120,000 (19 percent) from last month, and down 138,000 mt (21 percent) from last year. Harvested area is expected to total 150,000 hectares (ha), down 25,000 ha (14 percent) from last month, and similarly down from last year. Yield is forecast at 3.40 tons per hectare, 8 percent below last year.

Volcanic eruptions in June, August and September of 2019 partially destroyed oil palm plantations closest to the volcano. These eruptions also generated a widespread layer of volcanic ash that will reduce crude palm oil production in areas more distant from the eruption site.

**Approved by the World Agricultural Outlook Board**

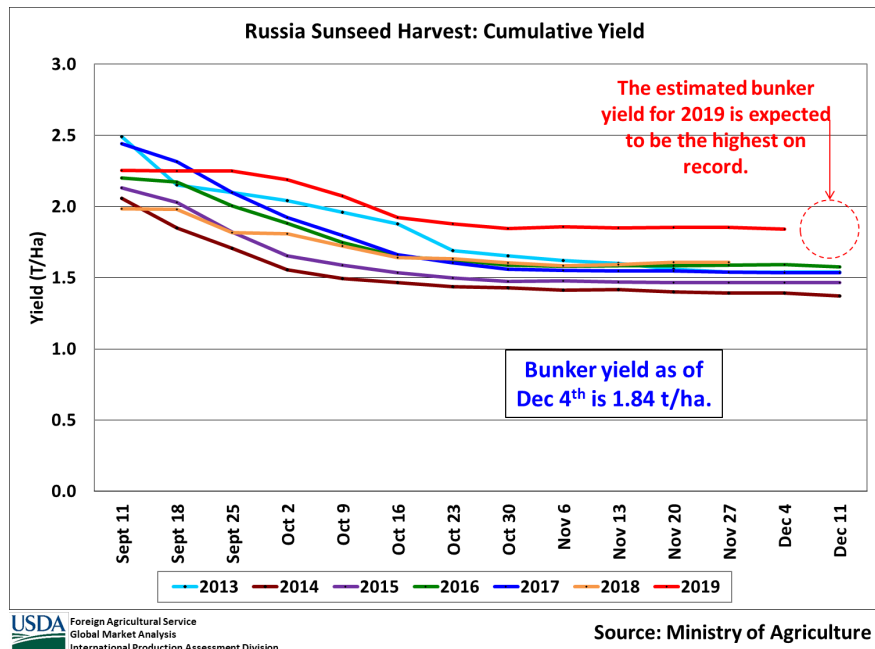
West New Britain, Papua New Guinea (PNG) : Mount Ulawun volcano pre and post eruption  
10 Day Surface Reflectance (NIR / SWIR1 / Red) Satellite Imagery



It is expected that large plantation companies will be able to overcome cashflow constraints from lower production, while smallholders may be forced to reduce input costs such as minimizing fertilizer applications. Recovery will be slow and local market observers estimate that production will remain below recent levels for the next two years. *(For more information, please contact [James.Crutchfield@usda.gov](mailto:James.Crutchfield@usda.gov).)*

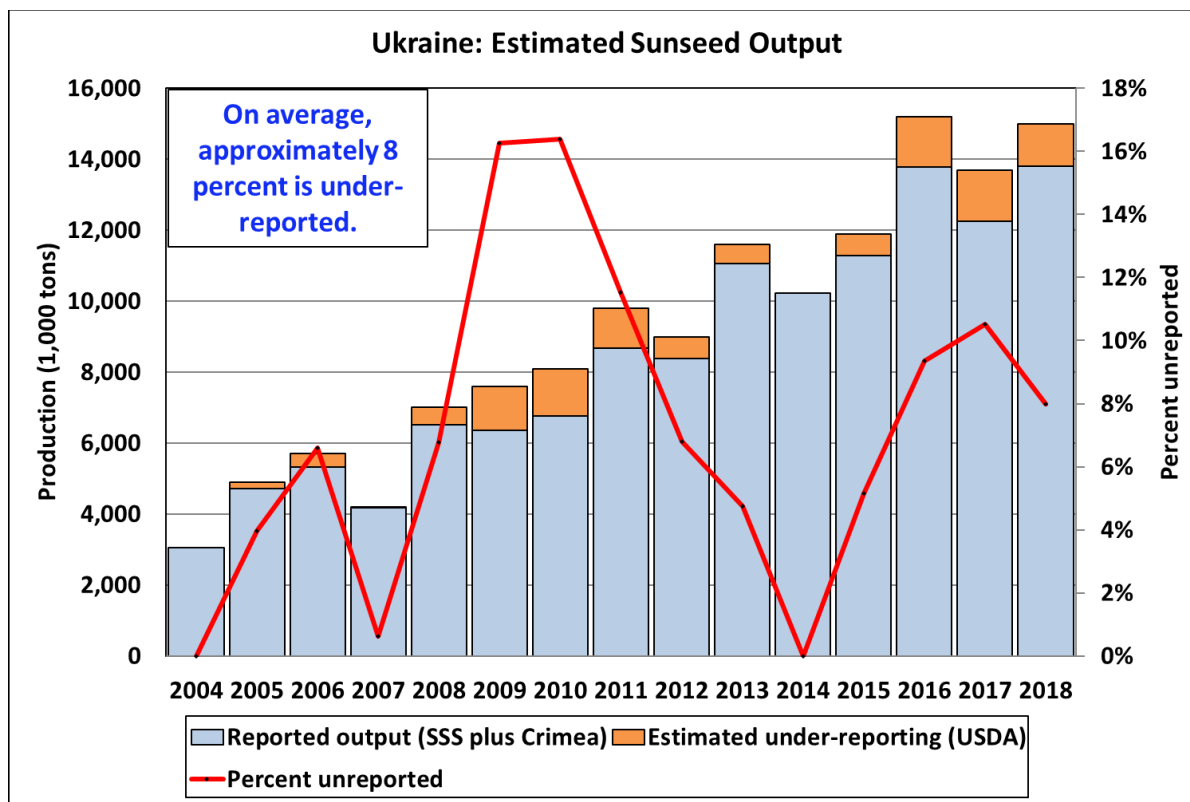
### Russia Sunflowerseed: Record Yield

Russia sunflowerseed production for 2019/20 is estimated at 14.5 million metric tons (mmt), up 12 percent from last month and 14 percent from last year. Total area is estimated at 8.5 million hectares, up 6 percent from last month and 7 percent from last year. Yield is estimated at 1.71 tons per hectare, up 5 percent from last month and 7 percent from last year. The month-to-month increase in yield is due to recent harvest reports of



bunker yield from the Ministry of Agriculture. The average net to bunker ratio is about 95 percent. High profitability for sunflowers has caused a steady rise in area since the turn of the century. Investment in hybrid seed varieties have led to increasing yields since 2010. USDA crop production estimates for Russia exclude estimated output from Crimea. *(For more information, please contact [Katie.McGaughey@usda.gov](mailto:Katie.McGaughey@usda.gov).)*

### Ukraine Sunflowerseed: Harvest Almost Complete with a Record Yield



USDA Foreign Agricultural Service  
Global Market Analysis  
International Production Assessment Division

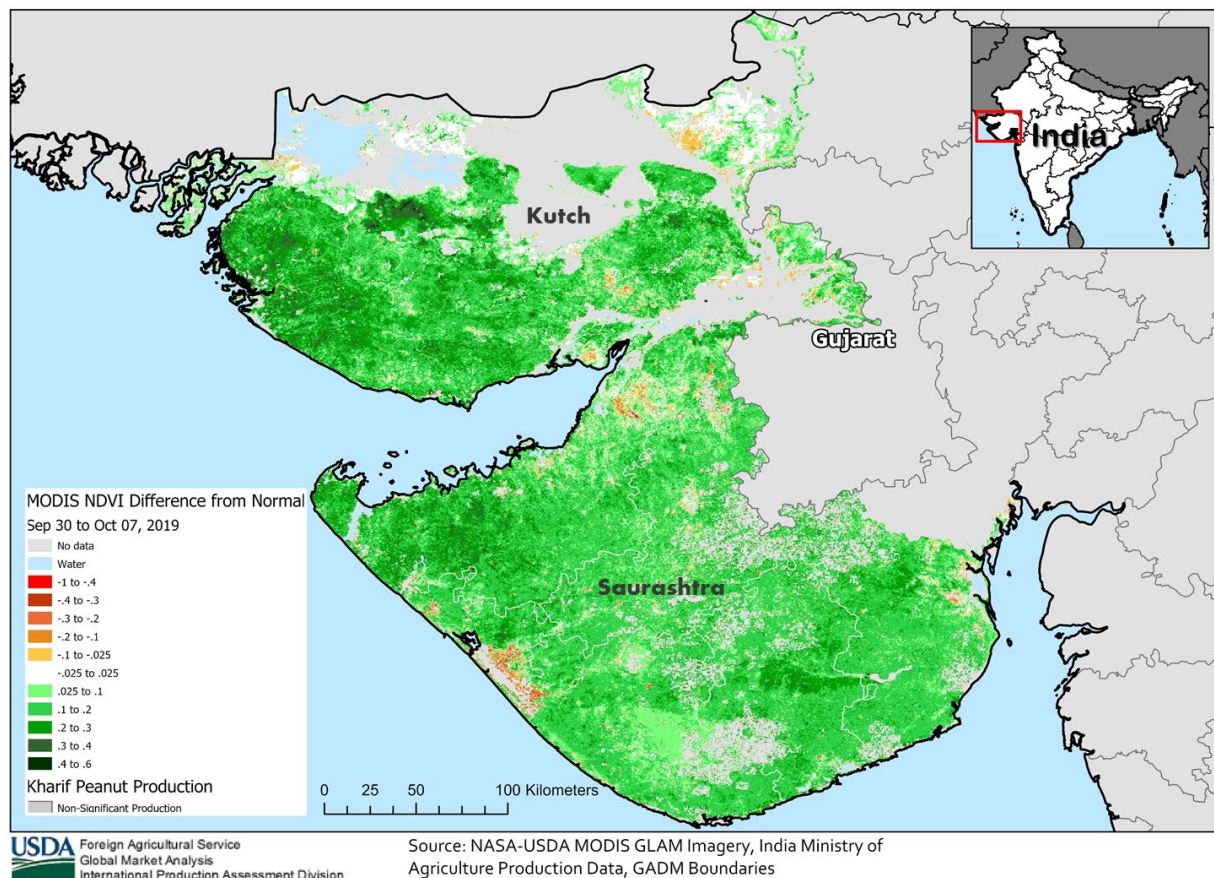
Source: Ukraine State Statistical Service, USDA FAS

Ukraine sunflowerseed production for 2019/20 is estimated at 15.5 million metric tons (mmt), up 7 percent from last month and 3 percent from last year. Yield is estimated at 2.50 tons per hectare, up 7 percent from last month and 8 percent from last year. The month-to-month increase in yield is confirmed by recent harvest reports from the Ministry of Agriculture and the State Statistical Service. Season long favorable weather in the Steppe zone boosted yields to a record. Total area is estimated at 6.2 million hectares, unchanged from last month and down 5 percent from last year. Sunflowers are one of the most profitable crops and sunflower area in Ukraine is known to be underreported by farmers to the State Statistical Service. USDA crop production estimates for Ukraine include estimated output from Crimea. *(For more information, please contact [Katie.McGaughey@fas.usda.gov](mailto:Katie.McGaughey@fas.usda.gov).)*

## India Peanuts: Yields at Near-Record Levels

USDA estimates production will reach 6.2 million metric tons, up 31 percent from 2018. This 31 percent increase in production is due to ideal weather conditions in the main peanut producing area of Kutch, Gujarat. Harvested area is estimated to reach 4.7 million hectares, down nearly 6 percent from last year, but up 4 percent from last month. The 4 percent area increase is due to slightly higher planting in Gujarat and higher *rabi* estimates. Yield is estimated to reach 1.32 metric tons per hectare up 39 percent from last year's low.

MODIS NDVI Anomaly for India's *Kharif* Season

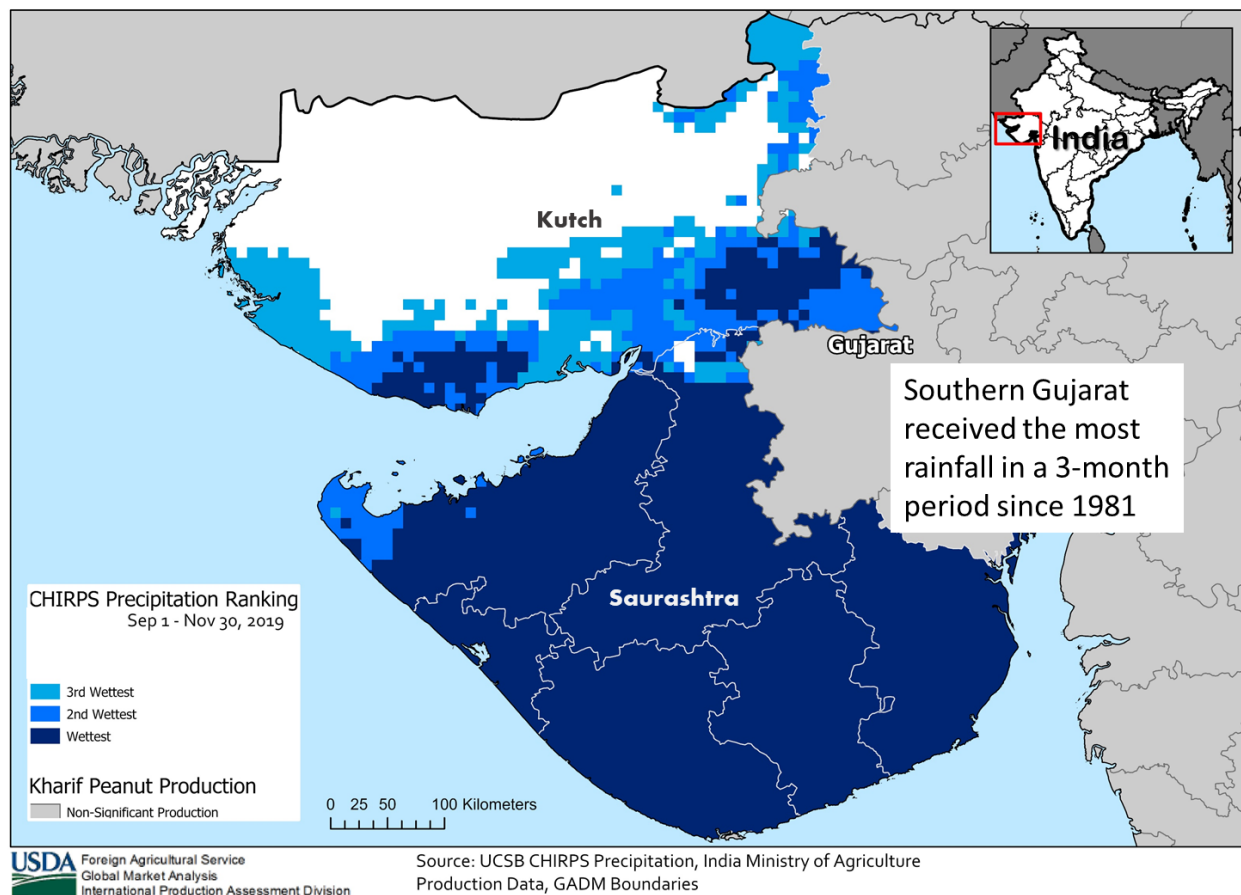


Although the southwest monsoon underperformed early in the season, it returned and progressed to the major peanut areas in central India, the states of Gujarat and Maharashtra. Gujarat produces 47 percent of total peanut production during the *kharif* season. Over half of this production is concentrated in the Kutch district of Gujarat. Cumulative rainfall is up significantly from the long-term average in Saurashtra and Kutch district. MODIS anomaly analysis of Normalized Difference Vegetation Index showed strong crop vigor during the pegging stage in mid-September. Gujarat has had the wettest season since 1981 according to CHIRPS (Climate Hazards Infrared Precipitation Stations).

Currently, *rabi* season peanuts are being planted. Trade sources are estimating that *rabi* peanut area will increase from previous projections because of good rainfall and reservoirs used for

irrigation are at capacity across the country. As of November 28, *rabi* planting is near the long-term average.

### CHIRPS Precipitation Ranking for India's *Kharif* Season

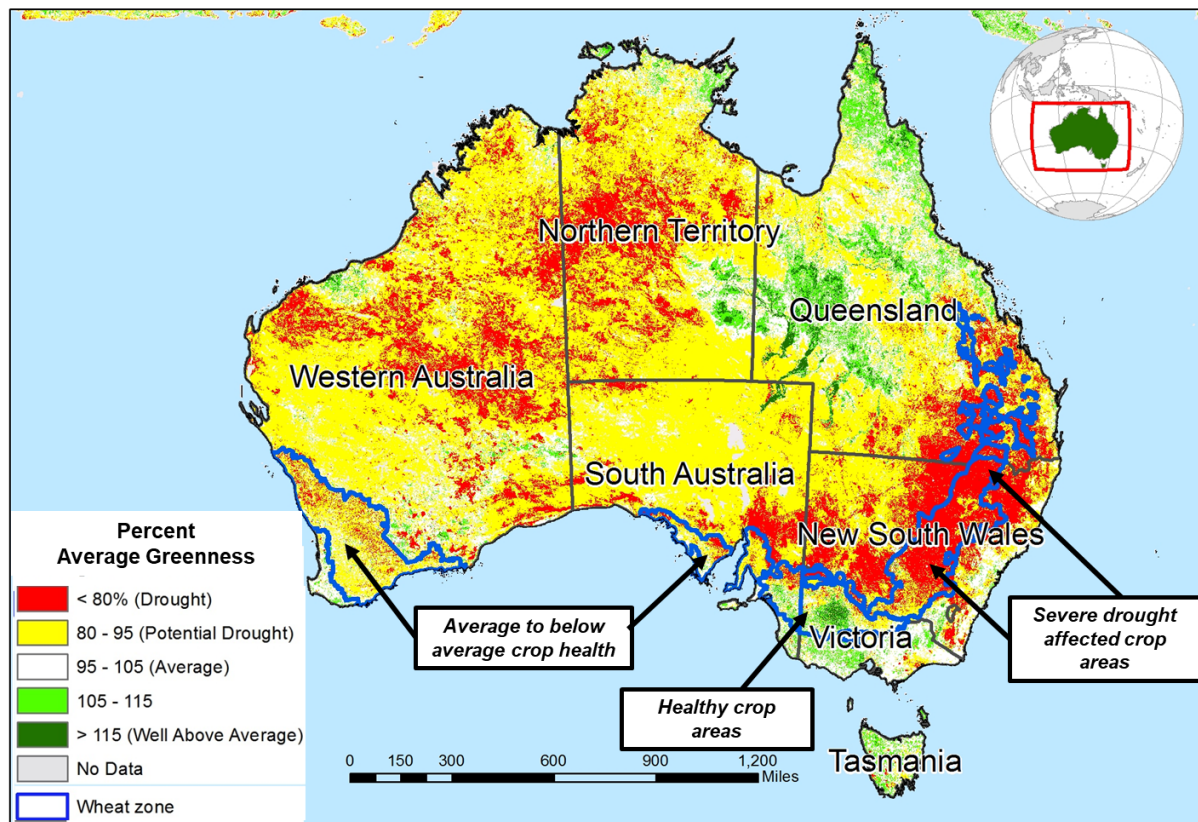


Peanuts account for about 25 percent of India's total oilseed production. There are two peanut-growing seasons in India: *kharif* and *rabi*. The *kharif* crop accounts for 85 percent of the total output, is typically planted in late June and harvested in October. The *rabi* crop is planted in late October through January and harvested in April. (For more information please contact [Arnella.Trent@usda.gov](mailto:Arnella.Trent@usda.gov).)

## Australia Wheat: Production Revised Lower

USDA estimates Australia 2019/20 wheat production at 16.1 million metric tons (mmt), down 1.1 mmt (6 percent) from last month, and down 1.2 mmt (7 percent) from last year. Harvested area is expected to total 10.1 million hectares (mha), down 0.5 mha (5 percent) from last month, but only 0.6 percent below last year. Yield is forecast at 1.59 tons per hectare, 21 percent below the 5-year average.

**Australia: Percent of Average Seasonal Greenness (September 1 – November 30, 2019)**



USDA Foreign Agricultural Service  
Global Market Analysis  
International Production Assessment Division

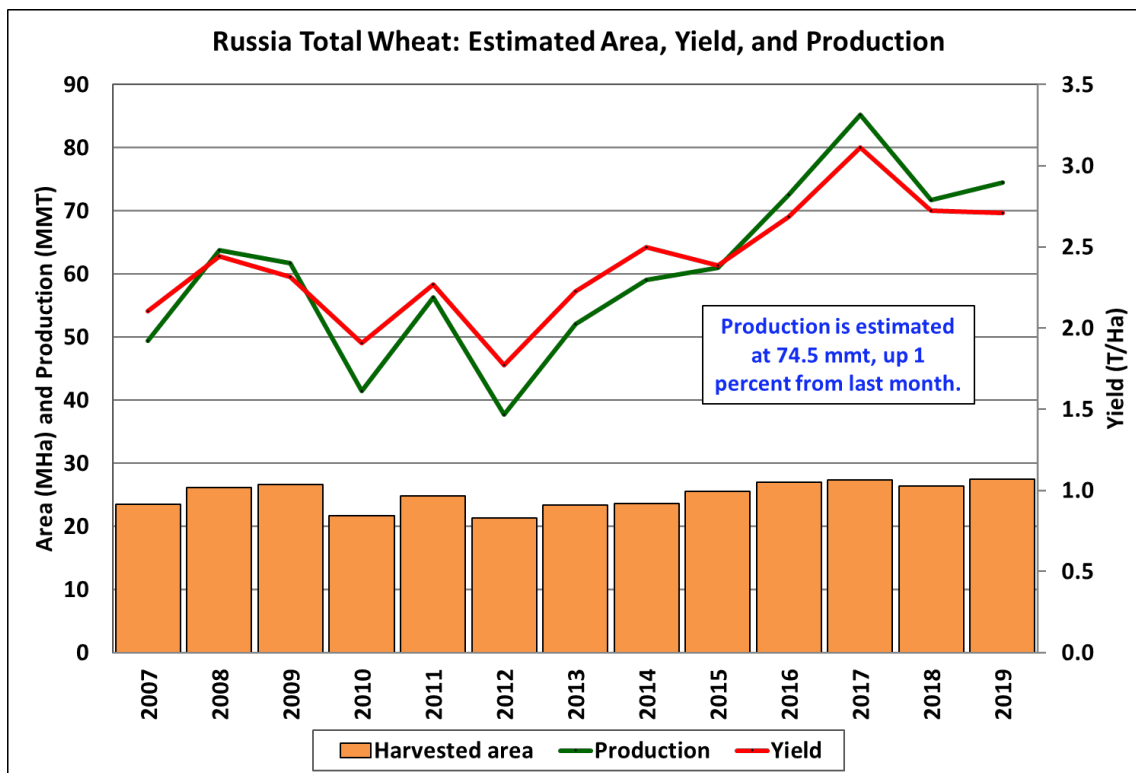
Source: ESA/Vito Proba-V satellite data

Following a good start to the growing season in the south and west, Australia's wheat prospects have slowly but steadily declined throughout the season. Sowing operations had timely rainfall in May in most cropping regions of Western Australia, South Australia, Victoria, and southern New South Wales (NSW). In contrast, the eastern states of Queensland (QLD) and northern NSW received below-normal precipitation for the entire season, resulting in significantly lower yields. Area is estimated lower in conjunction with the latest information from the Australian Bureau of Agricultural and Resource Economics and Sciences (ABARES) who estimate wheat area at 10.11 mha. Most of the reduction occurred in New South Wales where a significant amount of wheat was cut for hay or grazed-off in early spring.

Harvest results indicate wheat yields are lower than previous expectations, reflecting below-average rainfall and soil moisture conditions during the critical flowering and grainfill stages. Satellite-derived vegetation indices show poor vegetation conditions, corroborating the low

precipitation in QLD and NSW. Dry conditions have accelerated crop development. Harvesting is underway and will be complete by late December. (For more information, please contact [James.Crutchfield@usda.gov](mailto:James.Crutchfield@usda.gov).)

### Russia Wheat: Harvest is Essentially Complete



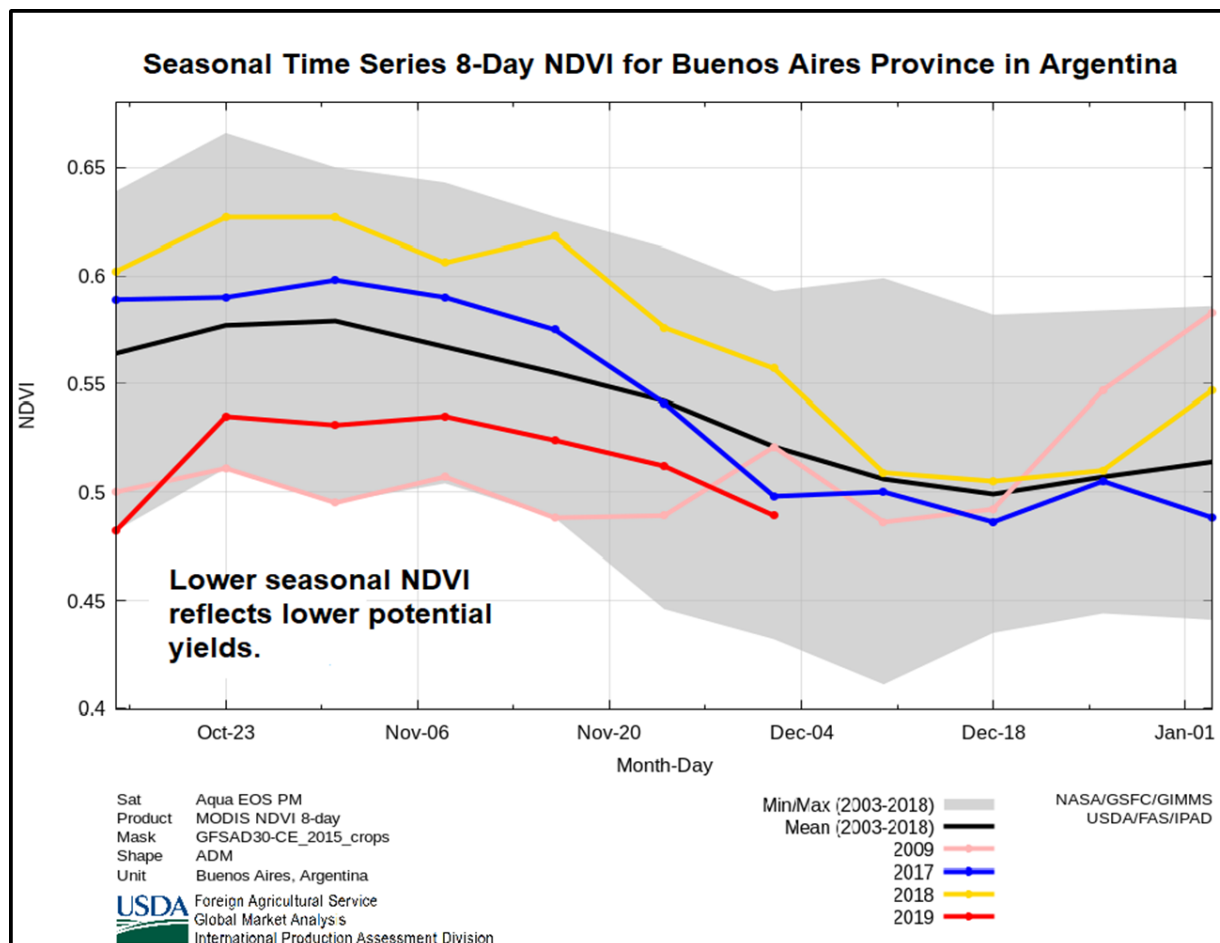
USDA Foreign Agricultural Service  
Global Market Analysis  
International Production Assessment Division

Source: USDA PSD Online

Russia wheat production for 2019/20 is estimated at 74.5 million metric tons (mmt), up 1 percent from last month and 4 percent from last year. The estimate includes 55.5 mmt of winter wheat and 19.0 mmt of spring wheat. USDA crop production estimates for Russia exclude output from Crimea. Total wheat yield is estimated at 2.74 tons per hectare, up 1 percent from last month and last year. Winter wheat accounts for about half of total wheat area and 70 percent of production. Harvest is complete and the month-to-month increase for winter wheat yield is based on harvest yield data from the Ministry of Agriculture and lower-than-expected winterkill rates over the previous winter. Spring wheat yields are unchanged from last month. Total wheat area (winter and spring) is estimated at 27.2 million hectares, unchanged from last month.

Area, yield, and production estimates for Russia winter wheat and spring wheat are available on PSD Online. Select “Downloadable Data Sets” and open the zipped file for “Russia Wheat; Winter/Spring Area & Production” (For more information, please contact [Katie.McGaughey@usda.gov](mailto:Katie.McGaughey@usda.gov).)

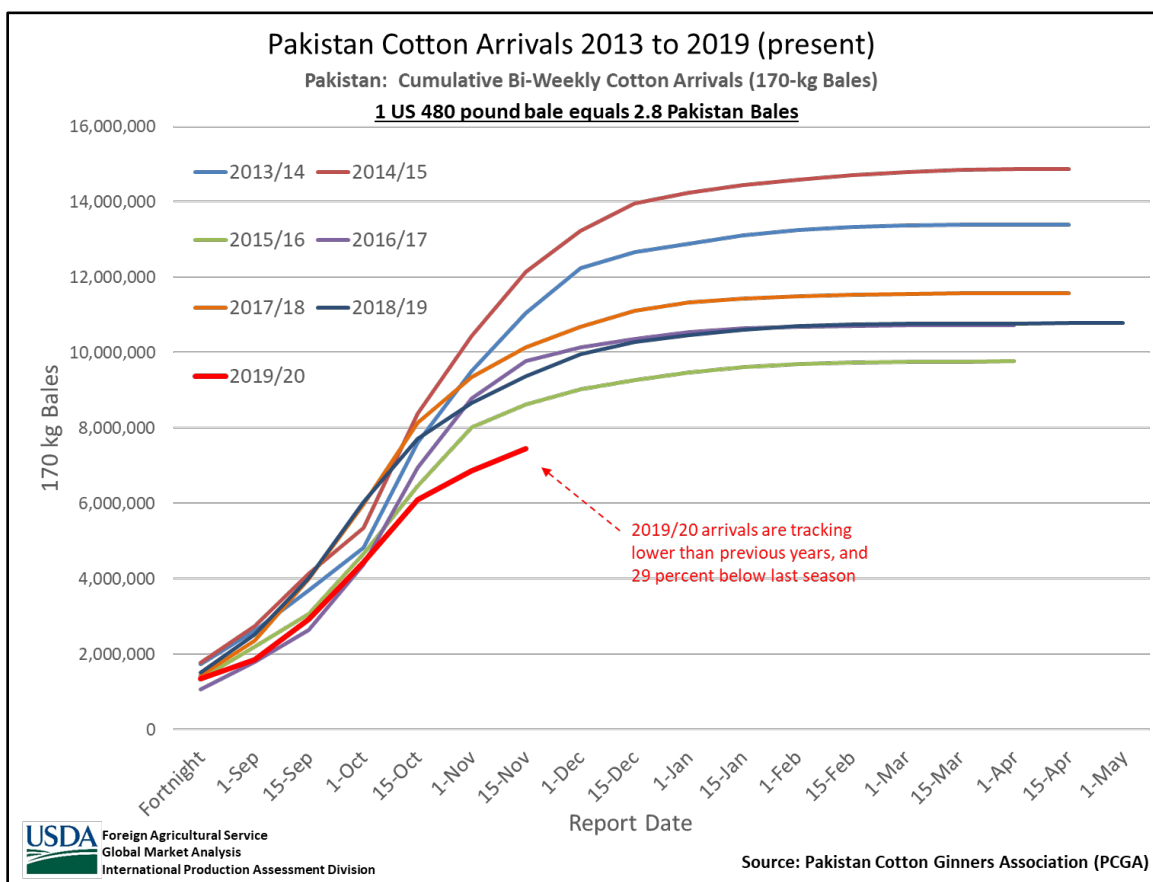
## Argentina Wheat: Slow Harvest between Spring Showers



USDA estimates Argentina wheat production for 2019/20 at 19.0 million metric tons, down 5 percent from last month and down 3 percent from last year. Area is estimated at 6.4 million hectares, up 1 percent from last month and 5 percent from last year. Yield is estimated at 2.98 tons per hectare, down 6 percent from last month and 7 percent from last year. Yields are lower in central Buenos Aires province due to dryness at grainfill. Western wheat areas also have yields which are down from the early, higher yields in northern Argentina. Much of the crop relied on subsoil moisture during flowering and grainfill. Harvest is underway. (For more information, please contact [Denise.McWilliams@usda.gov](mailto:Denise.McWilliams@usda.gov).)



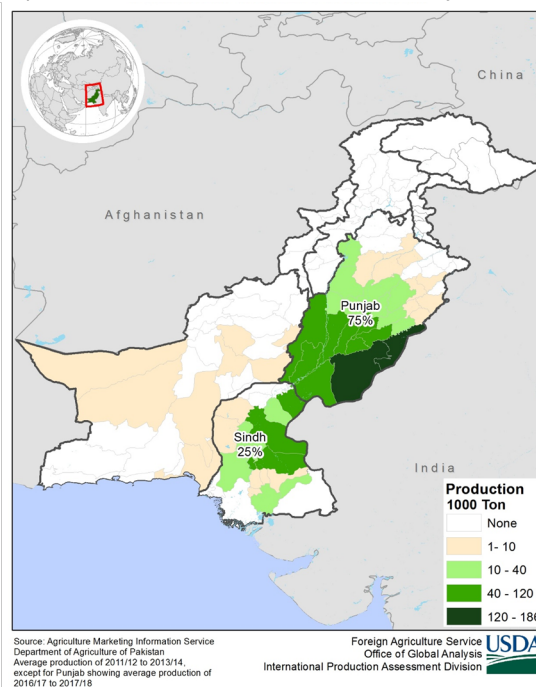
## Pakistan Cotton: Production Revised Down on Lower Arrival Data



USDA estimates Pakistan cotton production at 6.2 million 480-pound bales, down 0.8 million bales (11 percent) from last month, and down 1.4 million bales (18 percent) from last year. Harvested area is estimated at 2.5 million hectares, unchanged from last month, but up 0.2 million hectares (9 percent) from last year. The yield is estimated at 540 kilograms per hectare, down 12 percent from last month and down 25 percent from last year.

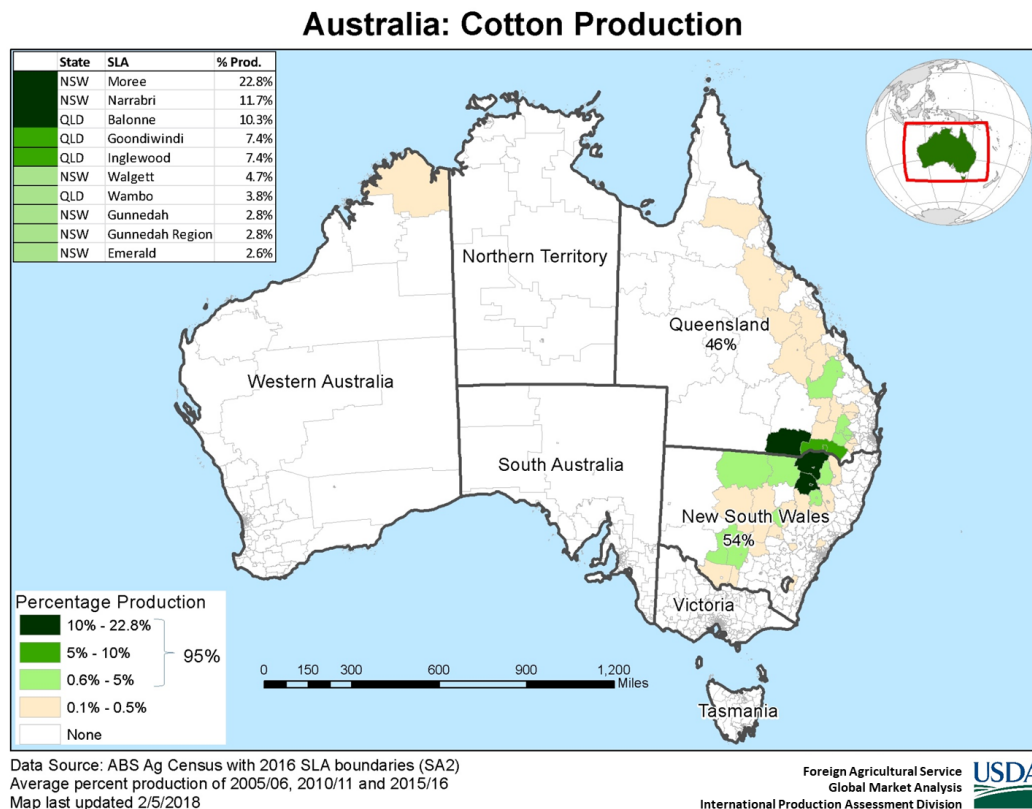
Production is revised down due to lower arrivals. At the beginning of December, cumulative seed cotton arrivals at gins are 29 percent less than the same time last year, according to the Pakistan Cotton Ginner's Association. At the provincial level, the arrivals are down 24 percent in Punjab and down 15 percent in Sindh. Cotton planting began in April. Harvest began in August and is now more than three quarters complete. Peak

Map of Pakistan Production Distribution by Province



harvest typically occurs in October. The two major cotton producing provinces are Punjab (72 percent) and Sindh (27 percent). *(For more information, please contact [James.Crutchfield@usda.gov](mailto:James.Crutchfield@usda.gov).)*

## Australia Cotton: Production Forecast Down 61 Percent from Last Year



USDA forecasts 2019/20 Australia cotton production at 0.85 million 480-pound bales, down 350,000 bales (29 percent) from last month and 1.35 million (61 percent) from last year. Harvested area, mainly irrigated, is estimated at 80,000 hectares, down 53 percent from last month, and 79 percent from last year. Below-normal precipitation during the past six months and a current lack of soil moisture for dryland sowing operations resulted in the 53 percent decrease in cotton area. Additionally, irrigation water availability has been severely depleted.

Dryland planting tends to vary with the seasonal weather forecast and prices at sowing. Irrigated cotton yields are substantially higher than dryland yields, and the difference widens in low-rainfall years. Yield is forecast for 2019/20 for Australia cotton at 2,313 kilograms per hectare, 26 percent above the 5-year average. On average, about 90 percent of Australia's total cotton comes from irrigated areas. It is forecast that irrigated production will comprise 98 percent of the total crop. Sorghum and cotton are the two dominant summer crops in eastern Australia. Cotton sowing began in October and harvest begins in April. *(For more information, please contact [James.Crutchfield@usda.gov](mailto:James.Crutchfield@usda.gov).)*



**World Agricultural Production  
U.S. Department of Agriculture**

Foreign Agricultural Service / Global Market Analysis  
International Production Assessment Division (IPAD)

Ag Box 1051, Room 4630, South Building  
Washington, DC 20250-1051

<https://ipad.fas.usda.gov/>

Telephone: (202) 720-1662 Fax: (202) 720-1158

This report uses information from the Foreign Agricultural Service’s (FAS) global network of agricultural attachés and counselors, official statistics of foreign governments and other foreign source materials, and the analysis of economic data and satellite imagery. Estimates of foreign area, yield, and production are from the International Production Assessment Division, FAS, and are reviewed by USDA’s Inter-Agency Commodity Estimates Committee. Estimates of U.S. area, yield, and production are from USDA’s National Agricultural Statistics Service. Numbers within the report may not add to totals because of rounding. This report reflects official USDA estimates released in the World Agricultural Supply and Demand Estimates (WASDE-584), December 10, 2019.

**Printed copies are available from the National Technical Information Service. Download an order form at [http://www.ntis.gov/products/specialty/usda/fas\\_a-g.asp](http://www.ntis.gov/products/specialty/usda/fas_a-g.asp), or call NTIS at 1-800-363-2068.**

The FAS International Production Assessment Division prepared this report. The next issue of World Agricultural Production will be released after 12:00 p.m. Eastern Time January 10, 2020.

**Conversion Table**

Metric tons to bushels

Wheat, soybeans	=	MT * 36.7437
Corn, sorghum, rye	=	MT * 39.36825
Barley	=	MT * 45.929625
Oats	=	MT * 68.894438

Metric tons to 480-lb bales

Cotton	=	MT * 4.592917
--------	---	---------------

Metric tons to hundredweight

Rice	=	MT * 22.04622
------	---	---------------

Area & weight

1 hectare	=	2.471044 acres
1 kilogram	=	2.204622 pounds



For further information, contact:  
**U.S. Department of Agriculture**  
**Foreign Agricultural Service**  
**Global Market Analysis**  
International Production Assessment Division  
Ag Box 1051, Room 4630, South Building  
Washington, DC 20250-1051

Telephone: (202) 720-1662

Fax: (202) 720-1158

**GENERAL INFORMATION**

Director	Ronald Frantz	202-720-4056	ronald.frantz@fas.usda.gov
Deputy Director	Robert Tetrault	202-720-1071	robert.tetrault@fas.usda.gov
Administrative Assistant	Dionndra Williams	202-720-1662	dionndra.williams@usda.gov
USDA Remote Sensing Advisor	Glenn Bethel	202-720-1280	glenn.bethel@fas.usda.gov
Sr. Analyst/Technical Lead	Curt Reynolds, Ph.D.	202-690-0134	curt.reynolds@fas.usda.gov
Sr. Analyst/ Satellite Imagery	Dath Mita, Ph.D.	202-720-7339	dath.mita@fas.usda.gov
Archives Manager/Technical Lead			
Sr. Analyst/ Global Special	Jim Crutchfield	202-690-0135	james.crutchfield@fas.usda.gov
Projects Manager/Technical Lead			
Sr. Analyst/Technical Lead	Vacant		
GIS Mapping/Imagery Specialist	Lisa Colson	202-720-6652	lisa.colson@fas.usda.gov
WAP Coordinator	Ifeoma Collins	202-720-0240	ifeoma.collins@usda.gov

**COUNTRY- AND REGION-SPECIFIC INFORMATION**

South America, Argentina, Venezuela, and Colombia	Denise McWilliams, Ph.D.	202-720-0107	denise.mcwilliams@fas.usda.gov
Western and Central Europe, and North Africa	Bryan Purcell	202-690-0138	bryan.purcell@fas.usda.gov
Russia, Ukraine, Kazakhstan	Katie McGaughey	202-720-9210	katie.mcgaughey@fas.usda.gov
South Asia, Sri Lanka	Arnella Trent	202-720-0881	arnella.trent@fas.usda.gov
Bangladesh, India, and Nepal			
East Asia, China, and Japan	Dath Mita, Ph.D.	202-720-7339	dath.mita@fas.usda.gov
Sub-Saharan Africa,	Curt Reynolds, Ph.D.	202-690-0134	curt.reynolds@fas.usda.gov
Nigeria and South Africa			
S.E. Asia, Indonesia, Thailand, Malaysia, Cambodia and Vietnam	Justin Jenkins	202-720-0419	justin.jenkins@fas.usda.gov
Central America, Mexico, and Western United States	Ifeoma Collins	202-720-0240	ifeoma.collins@usda.gov
Australia, New Zealand, Pakistan	Jim Crutchfield	202-690-0135	james.crutchfield@fas.usda.gov
Papua New Guinea and South Pacific Islands			
Middle East, Central Asia, Afghanistan	Vacant		
Iraq, Iran, and Syria			
Canada, Caribbean,	Vacant		
Eastern United States			
Brazil	Vacant		



The Foreign Agricultural Service (FAS) updates its production, supply and distribution (PSD) database for cotton, oilseeds, and grains at 12:00 p.m. on the day the *World Agricultural Supply and Demand Estimates* (WASDE) report is released. This circular is released by 12:15 p.m.

### **FAS Reports and Databases:**

Current *World Market and Trade and World Agricultural Production* Reports (Please see Data Publications):

<https://apps.fas.usda.gov/psdonline/app/index.html#/app/home>

Archives *World Market and Trade and World Agricultural Production* Reports:

[https://usda.library.cornell.edu/catalog?utf8=%E2%9C%93&search\\_field=all\\_fields&q=world+agricultural+production](https://usda.library.cornell.edu/catalog?utf8=%E2%9C%93&search_field=all_fields&q=world+agricultural+production)

Production, Supply and Distribution Database (PSD Online):

<http://apps.fas.usda.gov/psdonline/psdHome.aspx>

EU Countries Area and Production (Please see Downloadable Data Sets):

<https://apps.fas.usda.gov/psdonline/app/index.html#/app/home>

Russia Wheat, Winter/Spring Area and Production (Please see Downloadable Data Sets):

<https://apps.fas.usda.gov/psdonline/app/index.html#/app/home>

Global Agricultural Trade System (U.S. Exports and Imports):

<http://apps.fas.usda.gov/gats/default.aspx>

Export Sales Report:

<http://apps.fas.usda.gov/esrquery/>

Global Agricultural Information Network (Agricultural Attaché Reports):

<http://gain.fas.usda.gov/Pages/Default.aspx>

### **Other USDA Reports:**

World Agricultural Supply and Demand Estimates (WASDE):

<http://www.usda.gov/oce/commodity/wasde/>

Economic Research Service:

<http://www.ers.usda.gov/topics/crops>

National Agricultural Statistics Service:

<http://www.nass.usda.gov/Publications/>

**Table 01 World Crop Production Summary**

Million Metric Tons

Commodity	World -	Total Foreign	North America			Former Soviet		Europea n	Asia (WAP)					South America		Selected Other			All Others
			United States	Canada -	Mexico -	Russia -	Ukraine -		China -	India -	Indo-nesia	Paki- stan	Thai- land	Argen- tina	Brazil -	Aus- tralia	South Africa	Turkey -	
---Million metric tons---																			
<b>Wheat</b>																			
2017/18	762.9	715.5	47.4	30.4	3.5	85.2	27.0	nr	134.3	98.5	0.0	26.6	0.0	18.5	4.3	20.9	1.5	21.0	243.8
2018/19 prel.	731.3	680.0	51.3	32.2	3.0	71.7	25.1	nr	131.4	99.9	0.0	25.1	0.0	19.5	5.4	17.3	1.9	19.0	228.6
2019/20 proj.																			
Nov	765.6	713.3	52.3	33.0	3.3	74.0	29.0	nr	132.0	102.2	0.0	25.6	0.0	20.0	5.3	17.2	1.7	19.0	251.0
Dec	765.4	713.2	52.3	32.4	3.3	74.5	29.0	nr	133.6	102.2	0.0	25.6	0.0	19.0	5.3	16.1	1.6	19.0	251.6
<b>Coarse Grains</b>																			
2017/18	1,361.4	977.0	384.4	26.2	33.2	41.7	34.1	nr	265.7	46.9	11.9	6.2	5.1	39.3	85.1	12.2	13.6	12.3	343.5
2018/19 prel.	1,398.3	1,018.3	379.9	26.2	33.4	35.0	44.5	nr	265.4	43.0	12.0	6.6	5.7	59.2	104.3	10.9	12.4	13.3	346.5
2019/20 proj.																			
Nov	1,394.9	1,034.1	360.8	28.6	30.6	40.4	46.0	nr	262.5	46.0	12.7	6.6	5.3	57.6	104.3	11.0	14.5	14.5	353.6
Dec	1,401.7	1,040.9	360.8	28.6	30.6	40.4	46.0	nr	269.2	46.0	12.7	6.6	5.3	57.6	104.3	10.2	14.5	14.5	354.4
<b>Rice, Milled</b>																			
2017/18	494.8	489.1	5.7	0.0	0.2	0.6	0.0	nr	148.9	112.8	37.0	7.5	20.6	0.9	8.2	0.5	0.0	0.5	151.5
2018/19 prel.	499.2	492.1	7.1	0.0	0.2	0.7	0.0	nr	148.5	116.4	36.7	7.4	20.3	0.8	7.1	0.0	0.0	0.6	153.2
2019/20 proj.																			
Nov	497.8	491.8	6.0	0.0	0.2	0.7	0.0	nr	146.0	115.0	36.5	7.5	20.5	0.8	7.1	0.0	0.0	0.6	156.8
Dec	498.4	492.4	6.0	0.0	0.2	0.7	0.0	nr	146.7	115.0	36.5	7.5	20.5	0.8	7.1	0.0	0.0	0.6	156.6
<b>Total Grains</b>																			
2017/18	2,619.0	2,181.6	437.4	56.6	36.9	127.5	61.1	nr	548.9	258.2	48.9	40.3	25.6	58.7	97.5	33.6	15.1	33.8	738.8
2018/19 prel.	2,628.8	2,190.5	438.4	58.4	36.6	107.4	69.6	nr	545.3	259.3	48.7	39.1	26.0	79.5	116.9	28.3	14.3	32.9	728.3
2019/20 proj.																			
Nov	2,658.2	2,239.1	419.0	61.6	34.1	115.1	75.1	nr	540.5	263.1	49.2	39.7	25.8	78.4	116.8	28.2	16.2	34.1	761.3
Dec	2,665.5	2,246.5	419.0	60.9	34.1	115.6	75.1	nr	549.6	263.1	49.2	39.7	25.8	77.4	116.8	26.3	16.1	34.1	762.7
<b>Oilseeds</b>																			
2017/18	581.4	450.0	131.5	29.1	1.3	15.5	19.8	nr	59.6	35.4	13.8	4.0	1.0	42.5	125.8	5.4	2.6	3.2	91.1
2018/19 prel.	596.6	465.9	130.7	27.7	1.3	18.7	22.3	nr	59.9	35.5	14.1	3.8	1.0	61.0	121.8	2.9	2.0	3.5	90.5
2019/20 proj.																			
Nov	571.3	463.6	107.7	25.6	1.1	19.4	21.5	nr	61.6	35.6	14.4	3.5	1.1	58.2	127.6	2.5	2.4	3.3	85.8
Dec	574.6	467.1	107.6	25.1	1.1	20.9	22.5	nr	62.6	36.4	14.4	3.2	1.1	58.0	127.9	2.4	2.4	3.3	85.9
<b>Cotton</b>																			
2017/18	123.8	102.9	20.9	0.0	1.6	0.0	0.0	1.5	27.5	29.0	0.0	8.2	0.0	0.8	9.2	4.8	0.2	4.0	16.1
2018/19 prel.	118.1	99.7	18.4	0.0	1.7	0.0	0.0	1.7	27.8	25.8	0.0	7.6	0.0	1.1	12.5	2.2	0.2	3.7	15.4
2019/20 proj.																			
Nov	121.9	101.1	20.8	0.0	1.6	0.0	0.0	1.9	27.3	30.0	0.0	7.0	0.0	1.0	11.6	1.2	0.2	3.8	15.6
Dec	121.1	100.9	20.2	0.0	1.6	0.0	0.0	2.0	27.3	29.5	0.0	6.2	0.0	1.0	12.5	0.9	0.2	3.6	16.2

1/ Includes wheat, coarse grains, and rice (milled) shown above.

**Table 02 Wheat Area, Yield, and Production**

Country / Region	Area (Million hectares)				Yield (Metric tons per hectare)				Production (Million metric tons)				Change in Production			
	2017/18	Prel.	2019/20 Proj.		2017/18	Prel.	2019/20 Proj.		2017/18	Prel.	2019/20 Proj.		From last month		From last year	
		2018/19	Nov	Dec		2018/19	Nov	Dec		2018/19	Nov	Dec	MMT	Percent	MMT	Percent
<b>World</b>	218.61	215.48	218.04	217.22	3.49	3.39	3.51	3.52	762.88	731.35	765.55	765.41	-0.14	-0.02	34.06	4.66
<b>United States</b>	15.20	16.03	15.04	15.04	3.12	3.20	3.47	3.47	47.38	51.31	52.26	52.26	0.00	0.00	0.95	1.86
<b>Total Foreign</b>	203.42	199.45	203.00	202.18	3.52	3.41	3.51	3.53	715.50	680.04	713.29	713.15	-0.14	-0.02	33.11	4.87
<b>European Union - 28</b>	26.16	25.58	26.08	26.08	5.78	5.35	5.87	5.89	151.13	136.86	153.00	153.50	0.50	0.33	16.64	12.16
<b>China</b>	24.51	24.27	24.10	23.73	5.48	5.42	5.48	5.63	134.33	131.43	132.00	133.59	1.59	1.20	2.16	1.64
<b>South Asia</b>																
India	30.79	29.65	29.85	29.85	3.20	3.37	3.42	3.42	98.51	99.87	102.19	102.19	0.00	0.00	2.32	2.32
Pakistan	9.05	8.80	8.80	8.80	2.94	2.85	2.91	2.91	26.60	25.10	25.60	25.60	0.00	0.00	0.50	1.99
Afghanistan	2.10	2.00	2.30	2.30	2.03	1.80	2.17	2.17	4.28	3.60	5.00	5.00	0.00	0.00	1.40	38.89
Nepal	0.77	0.76	0.76	0.76	2.31	2.35	2.35	2.35	1.78	1.79	1.79	1.79	0.00	0.00	0.00	0.00
<b>Former Soviet Union - 12</b>																
Russia	27.37	26.34	27.20	27.20	3.11	2.72	2.72	2.74	85.17	71.69	74.00	74.50	0.50	0.68	2.82	3.93
Russia Winter	14.67	14.91	15.30	15.30	4.17	3.52	3.59	3.63	61.15	52.47	55.00	55.50	0.50	0.91	3.03	5.77
Russia Spring	12.71	11.44	11.90	11.90	1.89	1.68	1.60	1.60	24.01	19.22	19.00	19.00	0.00	0.00	-0.22	-1.12
Ukraine	6.64	6.72	7.05	7.05	4.06	3.73	4.11	4.11	26.98	25.06	29.00	29.00	0.00	0.00	3.94	15.74
Kazakhstan	11.91	11.35	11.25	11.25	1.24	1.23	1.02	1.02	14.80	13.95	11.50	11.50	0.00	0.00	-2.45	-17.54
Uzbekistan	1.45	1.40	1.40	1.40	4.80	4.29	4.86	4.86	6.94	6.00	6.80	6.80	0.00	0.00	0.80	13.33
Belarus	0.72	0.66	0.75	0.75	3.65	2.75	3.83	3.83	2.62	1.82	2.88	2.88	0.00	0.00	1.06	58.40
<b>Canada</b>	8.98	9.88	9.70	9.66	3.38	3.26	3.40	3.35	30.38	32.20	33.00	32.35	-0.65	-1.97	0.15	0.46
<b>South America</b>																
Argentina	5.80	6.05	6.30	6.37	3.19	3.22	3.17	2.98	18.50	19.50	20.00	19.00	-1.00	-5.00	-0.50	-2.56
Brazil	1.92	2.04	2.05	2.05	2.23	2.66	2.59	2.59	4.26	5.43	5.30	5.30	0.00	0.00	-0.13	-2.36
Uruguay	0.19	0.20	0.23	0.23	2.37	3.68	3.30	3.30	0.44	0.73	0.76	0.76	0.00	0.00	0.03	4.40
<b>Australia</b>	10.92	10.16	10.60	10.10	1.92	1.70	1.62	1.59	20.94	17.30	17.20	16.10	-1.10	-6.40	-1.20	-6.93
<b>Africa</b>																
Egypt	1.32	1.32	1.37	1.37	6.40	6.40	6.40	6.40	8.45	8.45	8.77	8.77	0.00	0.00	0.32	3.79
Morocco	3.32	2.85	2.75	2.75	2.14	2.58	1.60	1.60	7.09	7.34	4.40	4.40	0.00	0.00	-2.94	-40.05
Ethiopia	1.72	1.84	1.85	1.85	2.81	2.61	2.59	2.59	4.83	4.80	4.80	4.80	0.00	0.00	0.00	0.00
Algeria	1.60	2.07	2.10	2.10	1.50	1.90	1.90	1.90	2.40	3.94	4.00	4.00	0.00	0.00	0.06	1.52
<b>Middle East</b>																
Turkey	7.80	7.62	7.20	7.20	2.69	2.50	2.64	2.64	21.00	19.00	19.00	19.00	0.00	0.00	0.00	0.00
Iran	6.70	6.70	6.70	6.70	2.09	2.16	2.51	2.51	14.00	14.50	16.80	16.80	0.00	0.00	2.30	15.86
Iraq	2.20	1.70	2.40	2.40	1.82	1.76	2.00	2.00	4.00	3.00	4.80	4.80	0.00	0.00	1.80	60.00
Syria	1.10	1.10	1.60	1.60	2.00	1.82	3.00	3.00	2.20	2.00	4.80	4.80	0.00	0.00	2.80	140.00
<b>Mexico</b>	0.67	0.54	0.61	0.61	5.24	5.56	5.41	5.41	3.49	3.00	3.30	3.30	0.00	0.00	0.30	10.00
<b>Serbia</b>	0.54	0.65	0.58	0.58	4.26	4.63	4.48	4.48	2.30	3.00	2.60	2.60	0.00	0.00	-0.40	-13.33
<b>Others</b>	7.18	7.20	7.42	7.44	2.52	2.60	2.70	2.69	18.08	18.70	20.01	20.03	0.02	0.10	1.33	7.10

**Table 03 Total Coarse Grain Area, Yield, and Production**

Country / Region	Area (Million hectares)				Yield (Metric tons per hectare)				Production (Million metric tons)				Change in Production			
	2017/18	Prel.		2019/20 Proj.		2017/18	Prel.		2019/20 Proj.		2017/18	Prel.		2019/20 Proj.		
		2018/19	Nov	Dec	2018/19		Nov	Dec	2018/19	Nov		Dec	MMT	Percent	MMT	Percent
<b>World</b>	327.80	328.01	331.90	331.99	4.15	4.26	4.20	4.22	1,361.36	1,398.27	1,394.89	1,401.70	6.81	0.49	3.42	0.24
<b>United States</b>	36.76	36.39	36.36	36.36	10.46	10.44	9.92	9.92	384.39	379.93	360.82	360.82	0.00	0.00	-19.11	-5.03
<b>Total Foreign</b>	291.04	291.62	295.54	295.64	3.36	3.49	3.50	3.52	976.97	1,018.34	1,034.06	1,040.87	6.81	0.66	22.53	2.21
<b>China</b>	44.57	44.67	43.65	43.93	5.96	5.94	6.01	6.13	265.72	265.41	262.48	269.25	6.77	2.58	3.84	1.45
<b>European Union</b>	28.97	29.22	29.80	29.77	5.25	5.06	5.32	5.34	152.12	147.91	158.55	159.00	0.45	0.28	11.09	7.49
<b>South America</b>																
Brazil	17.83	18.72	19.33	19.33	4.77	5.57	5.40	5.40	85.06	104.33	104.35	104.35	0.00	0.00	0.02	0.01
Argentina	7.10	8.22	8.05	8.05	5.54	7.20	7.16	7.16	39.32	59.22	57.63	57.62	-0.01	-0.02	-1.60	-2.71
<b>Former Soviet Union - 12</b>																
Russia	14.59	14.03	14.43	14.43	2.86	2.50	2.80	2.80	41.72	35.00	40.38	40.38	0.00	0.00	5.38	15.36
Ukraine	7.59	7.58	8.01	8.01	4.49	5.87	5.75	5.75	34.07	44.50	46.04	46.04	0.00	0.00	1.54	3.45
Kazakhstan	2.49	2.97	3.41	3.41	1.79	1.76	1.52	1.52	4.45	5.23	5.19	5.19	0.00	0.00	-0.04	-0.80
Belarus	1.00	0.97	0.85	0.85	3.30	2.56	3.59	3.59	3.29	2.49	3.05	3.05	0.00	0.00	0.56	22.54
<b>Africa</b>																
Nigeria	14.57	14.30	14.40	14.40	1.29	1.39	1.38	1.38	18.86	19.92	19.90	19.90	0.00	0.00	-0.02	-0.10
South Africa	2.79	2.81	3.12	3.12	4.86	4.41	4.65	4.65	13.55	12.39	14.53	14.53	0.00	0.00	2.14	17.23
Tanzania	5.32	5.35	5.35	5.35	1.47	1.36	1.37	1.37	7.83	7.26	7.35	7.35	0.00	0.00	0.09	1.23
Burkina	3.85	3.85	3.85	3.85	0.97	1.25	1.17	1.17	3.73	4.82	4.50	4.50	0.00	0.00	-0.32	-6.62
Ethiopia	5.55	5.65	5.65	5.65	3.01	2.96	3.01	3.01	16.68	16.70	17.00	17.00	0.00	0.00	0.30	1.80
Egypt	1.02	1.07	1.02	1.02	7.09	7.14	7.09	7.09	7.26	7.66	7.26	7.26	0.00	0.00	-0.40	-5.22
Mali	4.78	4.50	4.50	4.50	1.36	1.54	1.28	1.28	6.51	6.94	5.75	5.75	0.00	0.00	-1.19	-17.09
<b>India</b>	24.28	22.22	23.66	23.66	1.93	1.93	1.94	1.94	46.94	42.97	45.95	45.95	0.00	0.00	2.98	6.93
<b>Southeast Asia</b>																
Indonesia	3.65	3.70	3.90	3.90	3.26	3.24	3.26	3.26	11.90	12.00	12.70	12.70	0.00	0.00	0.70	5.83
Philippines	2.60	2.48	2.55	2.55	3.10	3.07	3.18	3.18	8.08	7.61	8.10	8.10	0.00	0.00	0.49	6.47
Vietnam	1.04	0.95	1.00	1.00	4.72	4.80	4.85	4.85	4.91	4.56	4.85	4.85	0.00	0.00	0.29	6.36
Thailand	1.15	1.33	1.22	1.22	4.38	4.26	4.31	4.31	5.05	5.65	5.25	5.25	0.00	0.00	-0.40	-7.08
<b>Mexico</b>	9.07	8.95	8.56	8.56	3.66	3.73	3.57	3.57	33.19	33.40	30.60	30.60	0.00	0.00	-2.80	-8.38
<b>Canada</b>	4.74	5.00	5.52	5.51	5.54	5.24	5.17	5.19	26.24	26.19	28.56	28.56	-0.01	-0.02	2.36	9.01
<b>Australia</b>	5.59	5.03	5.29	5.01	2.18	2.17	2.08	2.03	12.19	10.93	11.00	10.16	-0.84	-7.59	-0.77	-7.07
<b>Middle East</b>																
Turkey	4.15	4.34	4.53	4.53	2.96	3.05	3.19	3.19	12.27	13.25	14.45	14.45	0.00	0.00	1.20	9.06
Iran	1.78	1.73	1.91	1.91	2.43	2.32	2.63	2.63	4.34	4.02	5.02	5.02	0.00	0.00	1.00	24.88
<b>Others</b>	70.96	71.98	71.99	72.14	1.57	1.64	1.58	1.58	111.69	117.97	113.64	114.08	0.44	0.39	-3.89	-3.30

World and Selected Countries and Regions; Coarse Grain includes: Barley, Corn, Millet, Mixed Grains, Oats, Rye and Sorghum



**Table 04 Corn Area, Yield, and Production**

Country / Region	Area (Million hectares)				Yield (Metric tons per hectare)				Production (Million metric tons)				Change in Production			
	2017/18	Prel.	2019/20 Proj.		2017/18	Prel.	2019/20 Proj.		2017/18	Prel.	2019/20 Proj.		From last month		From last year	
		2018/19	Nov	Dec		2018/19	Nov	Dec		2018/19	Nov	Dec	MMT	Percent	MMT	Percent
<b>World</b>	192.12	191.86	191.63	192.05	5.62	5.86	5.75	5.77	1,079.91	1,124.49	1,102.16	1,108.62	6.46	0.59	-15.87	-1.41
<b>United States</b>	33.48	33.08	33.11	33.11	11.08	11.07	10.48	10.48	371.10	366.29	347.01	347.01	0.00	0.00	-19.28	-5.26
<b>Total Foreign</b>	158.64	158.78	158.52	158.94	4.47	4.78	4.76	4.79	708.82	758.20	755.16	761.61	6.46	0.85	3.42	0.45
<b>China</b>	42.40	42.13	41.00	41.28	6.11	6.11	6.20	6.32	259.07	257.33	254.00	260.77	6.77	2.67	3.44	1.34
<b>South America</b>																
Brazil	16.60	17.50	18.10	18.10	4.94	5.77	5.58	5.58	82.00	101.00	101.00	101.00	0.00	0.00	0.00	0.00
Argentina	5.20	6.10	6.10	6.10	6.15	8.36	8.20	8.20	32.00	51.00	50.00	50.00	0.00	0.00	-1.00	-1.96
Bolivia	0.46	0.40	0.25	0.35	2.73	2.65	2.50	2.80	1.26	1.05	0.63	0.98	0.36	56.80	-0.07	-6.67
<b>European Union</b>	8.26	8.27	8.59	8.59	7.51	7.77	7.51	7.51	62.02	64.22	64.56	64.56	0.00	0.00	0.34	0.53
<b>Africa</b>																
South Africa	2.63	2.60	2.90	2.90	4.97	4.54	4.83	4.83	13.10	11.80	14.00	14.00	0.00	0.00	2.20	18.64
Nigeria	6.54	6.50	6.50	6.50	1.59	1.69	1.69	1.69	10.42	11.00	11.00	11.00	0.00	0.00	0.00	0.00
Ethiopia	2.23	2.30	2.30	2.30	3.77	3.63	3.65	3.65	8.40	8.35	8.40	8.40	0.00	0.00	0.05	0.60
Egypt	0.80	0.85	0.80	0.80	8.00	8.00	8.00	8.00	6.40	6.80	6.40	6.40	0.00	0.00	-0.40	-5.88
Tanzania	4.20	4.20	4.20	4.20	1.59	1.49	1.48	1.48	6.68	6.27	6.20	6.20	0.00	0.00	-0.07	-1.16
Malawi	1.73	1.70	1.70	1.70	2.01	1.64	2.00	2.00	3.46	2.79	3.40	3.40	0.00	0.00	0.61	21.78
Zambia	1.43	1.09	0.84	0.84	2.52	2.21	2.38	2.38	3.61	2.40	2.00	2.00	0.00	0.00	-0.39	-16.33
Kenya	2.09	2.20	2.00	2.00	1.52	1.82	1.70	1.70	3.19	4.00	3.40	3.40	0.00	0.00	-0.60	-15.00
Uganda	1.19	1.19	1.15	1.15	2.54	2.37	2.43	2.43	3.02	2.83	2.80	2.80	0.00	0.00	-0.03	-0.88
Zimbabwe	1.88	1.72	1.62	1.62	1.15	0.99	0.48	0.48	2.16	1.70	0.78	0.78	0.00	0.00	-0.92	-54.32
<b>Former Soviet Union - 12</b>																
Ukraine	4.43	4.57	4.90	4.90	5.44	7.84	7.24	7.24	24.12	35.81	35.50	35.50	0.00	0.00	-0.31	-0.85
Russia	2.69	2.37	2.45	2.45	4.90	4.81	5.71	5.71	13.20	11.42	14.00	14.00	0.00	0.00	2.59	22.65
<b>South Asia</b>																
India	9.38	9.20	9.50	9.50	3.07	2.96	3.05	3.05	28.75	27.23	29.00	29.00	0.00	0.00	1.77	6.50
Pakistan	1.23	1.32	1.33	1.33	4.63	4.62	4.59	4.59	5.70	6.10	6.10	6.10	0.00	0.00	0.00	0.00
Nepal	0.90	0.90	0.90	0.90	2.84	2.83	2.83	2.83	2.56	2.55	2.55	2.55	0.00	0.00	0.00	0.00
<b>Southeast Asia</b>																
Indonesia	3.65	3.70	3.90	3.90	3.26	3.24	3.26	3.26	11.90	12.00	12.70	12.70	0.00	0.00	0.70	5.83
Philippines	2.60	2.48	2.55	2.55	3.10	3.07	3.18	3.18	8.08	7.61	8.10	8.10	0.00	0.00	0.49	6.47
Vietnam	1.04	0.95	1.00	1.00	4.72	4.80	4.85	4.85	4.91	4.56	4.85	4.85	0.00	0.00	0.29	6.36
Thailand	1.13	1.30	1.19	1.19	4.44	4.31	4.37	4.37	5.00	5.60	5.20	5.20	0.00	0.00	-0.40	-7.14
<b>Mexico</b>	7.32	7.20	6.80	6.80	3.77	3.83	3.68	3.68	27.57	27.60	25.00	25.00	0.00	0.00	-2.60	-9.42
<b>Canada</b>	1.41	1.43	1.40	1.45	10.02	9.70	10.00	9.24	14.10	13.89	14.00	13.40	-0.60	-4.29	-0.49	-3.49
<b>Turkey</b>	0.53	0.53	0.52	0.52	10.00	10.75	11.54	11.54	5.30	5.70	6.00	6.00	0.00	0.00	0.30	5.26
<b>Others</b>	24.70	24.09	24.02	24.01	2.46	2.72	2.65	2.65	60.85	65.61	63.59	63.52	-0.07	-0.11	-2.09	-3.19

World and Selected Countries and Regions

**Table 05 Barley Area, Yield, and Production**

Country / Region	Area (Million hectares)				Yield (Metric tons per hectare)				Production (Million metric tons)				Change in Production						
	2017/18	Prel.		2019/20 Proj.		2017/18	Prel.		2019/20 Proj.		2017/18	Prel.		2019/20 Proj.		From last month		From last year	
		2018/19	Nov	Dec	2018/19		Nov	Dec	2018/19	Nov		Dec	MMT	Percent	MMT	Percent			
<b>World</b>	47.37	48.25	51.98	51.85	3.02	2.89	3.00	3.02	143.10	139.59	155.84	156.80	0.96	0.62	17.21	12.33			
<b>United States</b>	0.79	0.80	0.88	0.88	3.93	4.17	4.18	4.18	3.12	3.34	3.69	3.69	0.00	0.00	0.35	10.44			
<b>Total Foreign</b>	46.57	47.45	51.10	50.97	3.01	2.87	2.98	3.00	139.98	136.25	152.14	153.11	0.96	0.63	16.86	12.38			
<b>European Union</b>	12.10	12.31	12.41	12.38	4.85	4.54	4.98	5.03	58.65	55.90	61.80	62.25	0.45	0.73	6.35	11.36			
<b>Former Soviet Union - 12</b>																			
Russia	7.71	7.78	8.40	8.40	2.62	2.15	2.38	2.38	20.21	16.74	20.00	20.00	0.00	0.00	3.26	19.50			
Ukraine	2.65	2.57	2.70	2.70	3.28	2.96	3.52	3.52	8.70	7.60	9.50	9.50	0.00	0.00	1.90	24.93			
Kazakhstan	2.07	2.52	2.95	2.95	1.60	1.58	1.32	1.32	3.31	3.97	3.90	3.90	0.00	0.00	-0.07	-1.79			
Belarus	0.45	0.43	0.40	0.40	3.14	2.20	3.50	3.50	1.42	0.94	1.40	1.40	0.00	0.00	0.46	48.31			
Azerbaijan	0.32	0.32	0.32	0.32	2.48	2.72	2.72	2.72	0.79	0.87	0.87	0.87	0.00	0.00	0.00	0.00			
<b>Canada</b>	2.11	2.40	2.70	2.70	3.73	3.50	3.67	3.85	7.89	8.38	9.90	10.40	0.50	5.05	2.02	24.11			
<b>Australia</b>	4.12	3.72	4.05	3.95	2.24	2.23	2.07	2.13	9.25	8.31	8.40	8.40	0.00	0.00	0.09	1.08			
<b>Middle East</b>																			
Turkey	3.40	3.60	3.80	3.80	1.88	1.94	2.08	2.08	6.40	7.00	7.90	7.90	0.00	0.00	0.90	12.86			
Iran	1.60	1.55	1.70	1.70	1.94	1.81	2.12	2.12	3.10	2.80	3.60	3.60	0.00	0.00	0.80	28.57			
Iraq	0.78	0.60	1.20	1.20	1.26	1.30	1.33	1.33	0.98	0.78	1.60	1.60	0.00	0.00	0.82	105.13			
Syria	0.80	0.80	1.50	1.50	0.97	0.50	1.33	1.33	0.78	0.40	2.00	2.00	0.00	0.00	1.60	400.00			
<b>Africa</b>																			
Ethiopia	0.96	1.00	1.00	1.00	2.13	2.20	2.30	2.30	2.03	2.20	2.30	2.30	0.00	0.00	0.10	4.55			
Morocco	1.89	1.60	1.45	1.45	1.30	1.82	0.69	0.69	2.47	2.91	1.00	1.00	0.00	0.00	-1.91	-65.64			
Algeria	0.76	1.03	1.03	1.03	1.27	1.90	2.00	2.00	0.97	1.95	2.05	2.05	0.00	0.00	0.10	5.13			
Tunisia	0.39	0.31	0.40	0.40	1.02	0.99	1.63	1.63	0.40	0.31	0.65	0.65	0.00	0.00	0.34	109.68			
South Africa	0.09	0.12	0.13	0.13	3.37	3.55	2.77	2.77	0.31	0.42	0.37	0.37	0.00	0.00	-0.06	-13.51			
<b>South America</b>																			
Argentina	0.94	1.20	1.20	1.20	4.00	4.22	3.92	3.92	3.74	5.06	4.70	4.70	0.00	0.00	-0.36	-7.11			
Uruguay	0.14	0.15	0.17	0.17	2.67	3.83	3.82	3.82	0.39	0.58	0.63	0.63	0.00	0.00	0.06	9.57			
Brazil	0.11	0.11	0.12	0.12	2.61	3.16	3.56	3.56	0.28	0.35	0.42	0.42	0.00	0.00	0.06	17.80			
<b>India</b>	0.66	0.66	0.66	0.66	2.66	2.69	2.64	2.64	1.75	1.78	1.75	1.75	0.00	0.00	-0.03	-1.74			
<b>China</b>	0.33	0.45	0.47	0.47	3.29	4.11	4.15	4.15	1.09	1.85	1.95	1.95	0.00	0.00	0.10	5.41			
<b>Mexico</b>	0.36	0.35	0.36	0.36	2.81	2.82	2.81	2.81	1.01	1.00	1.01	1.01	0.00	0.00	0.01	1.41			
<b>Afghanistan</b>	0.07	0.06	0.18	0.18	1.40	0.95	1.39	1.39	0.10	0.06	0.25	0.25	0.00	0.00	0.19	338.60			
<b>Others</b>	1.76	1.82	1.81	1.81	2.27	2.25	2.33	2.33	4.00	4.09	4.20	4.22	0.01	0.33	0.13	3.13			

World and Selected Countries and Regions

**Table 06 Oats Area, Yield, and Production**

Country / Region	Area (Million hectares)				Yield (Metric tons per hectare)				Production (Million metric tons)				Change in Production			
	2017/18	Prel.	2019/20 Proj.		2017/18	Prel.	2019/20 Proj.		2017/18	Prel.	2019/20 Proj.		From last month		From last year	
		2018/19	Nov	Dec		2018/19	Nov	Dec		2018/19	Nov	Dec	MMT	Percent	MMT	Percent
<b>World</b>	9.86	9.72	9.33	9.26	2.40	2.26	2.40	2.43	23.70	21.92	22.43	22.51	0.09	0.38	0.59	2.71
<b>United States</b>	0.33	0.35	0.33	0.33	2.22	2.33	2.31	2.31	0.72	0.82	0.77	0.77	0.00	0.00	-0.04	-5.40
<b>Total Foreign</b>	9.54	9.37	9.00	8.93	2.41	2.25	2.41	2.43	22.98	21.10	21.66	21.74	0.09	0.39	0.64	3.02
<b>European Union</b>	2.67	2.71	2.55	2.55	3.02	2.84	3.10	3.10	8.06	7.72	7.92	7.92	0.00	0.00	0.21	2.66
<b>Former Soviet Union - 12</b>																
Russia	2.78	2.73	2.40	2.40	1.96	1.73	1.79	1.79	5.45	4.72	4.30	4.30	0.00	0.00	-0.42	-8.80
Ukraine	0.21	0.20	0.18	0.18	2.31	2.14	2.39	2.39	0.48	0.42	0.43	0.43	0.00	0.00	0.01	1.65
Belarus	0.15	0.15	0.15	0.15	3.33	2.26	3.00	3.00	0.50	0.34	0.45	0.45	0.00	0.00	0.11	31.58
Kazakhstan	0.21	0.24	0.24	0.24	1.34	1.43	1.45	1.45	0.29	0.34	0.34	0.34	0.00	0.00	0.00	1.19
<b>Canada</b>	1.05	1.01	1.20	1.16	3.55	3.42	3.33	3.59	3.73	3.44	4.00	4.16	0.16	4.00	0.72	21.07
<b>South America</b>																
Argentina	0.22	0.24	0.14	0.13	2.24	2.40	2.59	2.54	0.49	0.57	0.35	0.34	-0.01	-2.86	-0.23	-40.56
Brazil	0.34	0.38	0.38	0.38	1.86	2.11	2.17	2.17	0.63	0.80	0.83	0.83	0.00	0.00	0.03	3.77
Chile	0.11	0.08	0.07	0.07	5.31	5.13	5.50	5.50	0.57	0.39	0.39	0.39	0.00	0.00	0.00	0.00
Uruguay	0.02	0.03	0.01	0.01	1.68	2.04	1.86	1.86	0.03	0.05	0.03	0.03	0.00	0.00	-0.03	-50.94
<b>Oceania</b>																
Australia	0.87	0.68	0.70	0.68	1.40	1.31	1.43	1.39	1.23	0.89	1.00	0.94	-0.07	-6.50	0.05	5.29
New Zealand	0.01	0.01	0.01	0.01	5.83	5.00	5.50	5.50	0.04	0.03	0.03	0.03	0.00	0.00	0.01	32.00
<b>China</b>	0.48	0.50	0.53	0.53	1.16	1.15	1.19	1.19	0.55	0.58	0.63	0.63	0.00	0.00	0.05	8.70
<b>Africa</b>																
Algeria	0.09	0.09	0.09	0.09	1.29	1.29	1.29	1.29	0.11	0.11	0.11	0.11	0.00	0.00	0.00	0.00
Morocco	0.03	0.05	0.05	0.05	1.17	1.40	0.89	0.89	0.04	0.06	0.04	0.04	0.00	0.00	-0.02	-36.51
South Africa	0.02	0.02	0.03	0.03	1.53	1.65	1.60	1.60	0.02	0.03	0.04	0.04	0.00	0.00	0.01	21.21
<b>Other Europe</b>																
Norway	0.07	0.07	0.07	0.07	4.16	2.09	4.29	4.29	0.28	0.14	0.30	0.30	0.00	0.00	0.16	108.33
Serbia	0.03	0.03	0.03	0.03	2.17	2.17	2.17	2.17	0.07	0.07	0.07	0.07	0.00	0.00	0.00	0.00
Albania	0.02	0.01	0.01	0.01	2.27	2.08	2.14	2.14	0.03	0.03	0.03	0.03	0.00	0.00	0.00	11.11
Bosnia and Herzegovina	0.01	0.01	0.01	0.01	2.73	2.79	3.00	3.00	0.03	0.04	0.04	0.04	0.00	0.00	0.00	7.69
<b>Turkey</b>	0.11	0.10	0.10	0.10	2.21	2.30	2.30	2.30	0.25	0.23	0.23	0.23	0.00	0.00	0.00	0.00
<b>Mexico</b>	0.04	0.05	0.05	0.05	1.64	2.06	1.80	1.80	0.07	0.10	0.09	0.09	0.00	0.00	-0.01	-12.62
<b>Others</b>	0.01	0.02	0.01	0.01	1.79	2.00	1.86	1.86	0.03	0.03	0.03	0.03	0.00	0.00	0.00	-13.33

World and Selected Countries and Regions

**Table 07 Rye Area, Yield, and Production**

Country / Region	Area (Million hectares)				Yield (Metric tons per hectare)				Production (Million metric tons)				Change in Production			
	2017/18	Prel.	2019/20 Proj.		2017/18	Prel.	2019/20 Proj.		2017/18	Prel.	2019/20 Proj.		From last month		From last year	
		2018/19	Nov	Dec		2018/19	Nov	Dec		2018/19	Nov	Dec	MMT	Percent	MMT	Percent
<b>World</b>	4.02	3.74	3.72	3.69	3.06	2.68	3.17	3.17	12.31	10.00	11.77	11.70	-0.07	-0.59	1.70	17.05
<b>United States</b>	0.12	0.11	0.13	0.13	2.15	1.95	2.16	2.16	0.26	0.21	0.27	0.27	0.00	0.00	0.06	26.17
<b>Total Foreign</b>	3.90	3.63	3.59	3.56	3.09	2.70	3.20	3.21	12.05	9.78	11.50	11.43	-0.07	-0.61	1.65	16.85
<b>European Union</b>	1.93	1.92	2.07	2.07	3.83	3.23	3.84	3.84	7.41	6.21	7.95	7.95	0.00	0.00	1.75	28.12
<b>Former Soviet Union - 12</b>																
Russia	1.17	0.96	0.83	0.83	2.17	2.00	1.94	1.94	2.54	1.91	1.60	1.60	0.00	0.00	-0.31	-16.41
Belarus	0.26	0.25	0.20	0.20	2.62	2.00	3.25	3.25	0.67	0.50	0.65	0.65	0.00	0.00	0.15	29.22
Ukraine	0.17	0.15	0.11	0.11	2.97	2.66	3.09	3.09	0.51	0.40	0.34	0.34	0.00	0.00	-0.06	-14.14
Kazakhstan	0.03	0.02	0.02	0.02	1.26	1.05	1.25	1.25	0.04	0.02	0.03	0.03	0.00	0.00	0.00	8.70
<b>Turkey</b>	0.10	0.11	0.11	0.11	3.17	2.91	2.91	2.91	0.32	0.32	0.32	0.32	0.00	0.00	0.00	0.00
<b>Canada</b>	0.10	0.08	0.13	0.10	3.39	2.99	3.08	3.30	0.34	0.24	0.40	0.33	-0.07	-17.50	0.09	39.83
<b>South America</b>																
Chile	0.00	0.00	0.00	0.00	5.00	5.00	5.00	5.00	0.01	0.01	0.01	0.01	0.00	0.00	0.00	0.00
Argentina	0.05	0.05	0.04	0.04	1.91	1.78	2.14	2.14	0.09	0.09	0.08	0.08	0.00	0.00	-0.01	-13.79
<b>Other Europe</b>																
Bosnia and Herzegovina	0.00	0.00	0.00	0.00	3.67	2.75	3.50	3.50	0.01	0.01	0.01	0.01	0.00	0.00	0.00	27.27
Switzerland	0.00	0.00	0.00	0.00	5.50	5.50	5.50	5.50	0.01	0.01	0.01	0.01	0.00	0.00	0.00	0.00
Serbia	0.00	0.00	0.00	0.00	2.50	2.50	2.50	2.50	0.01	0.01	0.01	0.01	0.00	0.00	0.00	0.00
<b>Australia</b>	0.04	0.04	0.04	0.04	0.75	0.68	0.68	0.68	0.03	0.03	0.03	0.03	0.00	0.00	0.00	0.00
<b>Others</b>	0.04	0.03	0.04	0.04	1.84	1.00	1.87	1.87	0.07	0.03	0.07	0.07	0.00	0.00	0.04	121.88

World and Selected Countries and Regions

**Table 08 Sorghum Area, Yield, and Production**

Country / Region	Area (Million hectares)				Yield (Metric tons per hectare)				Production (Million metric tons)				Change in Production			
	Prel.		2019/20 Proj.		Prel.		2019/20 Proj.		Prel.		2019/20 Proj.		From last month		From last year	
	2017/18	2018/19	Nov	Dec	2017/18	2018/19	Nov	Dec	2017/18	2018/19	Nov	Dec	MMT	Percent	MMT	Percent
<b>World</b>	39.55	40.12	40.93	40.82	1.47	1.49	1.43	1.42	58.28	59.81	58.53	57.90	-0.63	-1.07	-1.91	-3.20
<b>United States</b>	2.04	2.05	1.91	1.91	4.50	4.53	4.76	4.76	9.19	9.27	9.08	9.08	0.00	0.00	-0.19	-2.02
<b>Total Foreign</b>	37.51	38.07	39.02	38.92	1.31	1.33	1.27	1.25	49.09	50.54	49.44	48.82	-0.63	-1.27	-1.73	-3.41
<b>Africa</b>																
Nigeria	5.82	5.80	5.90	5.90	1.19	1.17	1.17	1.17	6.94	6.80	6.90	6.90	0.00	0.00	0.10	1.47
Ethiopia	1.90	1.90	1.90	1.90	2.72	2.71	2.74	2.74	5.17	5.15	5.20	5.20	0.00	0.00	0.05	0.97
Sudan	5.41	7.00	7.00	7.00	0.69	0.71	0.57	0.57	3.74	4.95	4.00	4.00	0.00	0.00	-0.95	-19.24
Burkina	1.67	1.80	1.80	1.80	0.82	1.07	1.00	1.00	1.37	1.93	1.80	1.80	0.00	0.00	-0.13	-6.74
Mali	1.39	1.50	1.50	1.50	1.03	0.98	0.87	0.87	1.42	1.47	1.30	1.30	0.00	0.00	-0.17	-11.56
Niger	3.82	3.70	3.70	3.70	0.51	0.57	0.51	0.51	1.95	2.10	1.90	1.90	0.00	0.00	-0.20	-9.52
Cameroon	0.85	0.85	0.85	0.85	1.59	1.41	1.41	1.41	1.35	1.20	1.20	1.20	0.00	0.00	0.00	0.00
Tanzania	0.78	0.80	0.80	0.80	0.96	0.84	1.00	1.00	0.76	0.67	0.80	0.80	0.00	0.00	0.13	19.05
Egypt	0.14	0.14	0.14	0.14	5.36	5.36	5.36	5.36	0.75	0.75	0.75	0.75	0.00	0.00	0.00	0.00
Uganda	0.42	0.42	0.41	0.41	0.75	0.98	0.93	0.93	0.32	0.41	0.38	0.38	0.00	0.00	-0.03	-7.54
Ghana	0.25	0.25	0.25	0.25	1.11	1.26	1.12	1.12	0.28	0.32	0.28	0.28	0.00	0.00	-0.04	-11.39
Mozambique	0.21	0.25	0.30	0.30	1.19	1.18	1.08	1.08	0.25	0.30	0.33	0.33	0.00	0.00	0.03	10.17
South Africa	0.03	0.05	0.05	0.05	3.97	2.70	2.67	2.67	0.12	0.14	0.12	0.12	0.00	0.00	-0.02	-11.11
<b>Mexico</b>	1.35	1.35	1.35	1.35	3.37	3.48	3.33	3.33	4.55	4.70	4.50	4.50	0.00	0.00	-0.20	-4.26
<b>South America</b>																
Argentina	0.70	0.63	0.58	0.58	4.29	3.97	4.35	4.35	3.00	2.50	2.50	2.50	0.00	0.00	0.00	0.00
Brazil	0.78	0.73	0.73	0.73	2.73	2.97	2.88	2.88	2.14	2.18	2.10	2.10	0.00	0.00	-0.08	-3.54
<b>South Asia</b>																
India	5.02	4.01	5.00	5.00	0.96	0.94	0.90	0.90	4.80	3.76	4.50	4.50	0.00	0.00	0.74	19.68
Pakistan	0.26	0.24	0.24	0.24	0.60	0.59	0.58	0.58	0.15	0.14	0.14	0.14	0.00	0.00	0.00	0.00
<b>China</b>	0.51	0.72	0.75	0.75	4.87	4.79	4.80	4.80	2.47	3.45	3.60	3.60	0.00	0.00	0.15	4.35
<b>Australia</b>	0.46	0.50	0.40	0.25	2.72	2.58	2.75	1.60	1.26	1.28	1.10	0.40	-0.70	-63.64	-0.88	-68.70
<b>European Union</b>	0.12	0.14	0.16	0.16	5.32	5.46	5.22	5.22	0.66	0.74	0.82	0.82	0.00	0.00	0.08	11.26
<b>Others</b>	5.61	5.30	5.22	5.27	1.01	1.06	1.00	1.01	5.66	5.62	5.23	5.30	0.07	1.36	-0.32	-5.63

World and Selected Countries and Regions

**Table 09 Rice Area, Yield, and Production**  
**World and Selected Countries and Regions**

Country / Region	Area (Million hectares)				Yield (Metric tons per hectare)				Production (Million metric tons)				Change in Production			
	Prel.		2019/20 Proj.		Prel.		2019/20 Proj.		Prel.		2019/20 Proj.		From last month		From last year	
	2017/18	2018/19	Nov	Dec	2017/18	2018/19	Nov	Dec	2017/18	2018/19	Nov	Dec	MMT	Percent	MMT	Percent
<b>World</b>	162.96	162.80	162.50	162.19	4.53	4.58	4.58	4.59	494.80	499.19	497.76	498.40	0.64	0.13	-0.80	-0.16
<b>United States</b>	0.96	1.18	1.00	1.00	8.41	8.62	8.51	8.51	5.66	7.12	5.97	5.97	0.00	0.00	-1.15	-16.18
<b>Total Foreign</b>	162.00	161.62	161.49	161.19	4.51	4.55	4.55	4.57	489.14	492.07	491.79	492.43	0.64	0.13	0.36	0.07
<b>East Asia</b>																
China	30.75	30.19	30.00	29.69	6.92	7.03	6.95	7.06	148.87	148.49	146.00	146.73	0.73	0.50	-1.76	-1.19
Japan	1.56	1.55	1.55	1.55	6.87	6.79	6.93	6.93	7.79	7.66	7.80	7.80	0.00	0.00	0.14	1.87
Korea, South	0.76	0.74	0.73	0.73	7.01	6.99	7.07	6.84	3.97	3.87	3.88	3.74	-0.14	-3.51	-0.12	-3.21
Korea, North	0.48	0.50	0.50	0.50	5.09	4.18	4.18	4.18	1.57	1.36	1.36	1.36	0.00	0.00	0.00	0.00
<b>South Asia</b>																
India	43.77	43.80	43.50	43.50	3.86	3.99	3.97	3.97	112.76	116.42	115.00	115.00	0.00	0.00	-1.42	-1.22
Bangladesh	11.27	11.77	11.83	11.83	4.35	4.46	4.50	4.50	32.65	35.00	35.50	35.50	0.00	0.00	0.50	1.43
Pakistan	2.80	2.88	2.90	2.90	4.02	3.85	3.88	3.88	7.50	7.40	7.50	7.50	0.00	0.00	0.10	1.35
Nepal	1.49	1.50	1.50	1.50	3.34	3.73	3.53	3.53	3.31	3.73	3.53	3.53	0.00	0.00	-0.20	-5.36
Sri Lanka	0.77	1.10	1.00	1.00	4.30	3.96	4.50	4.50	2.25	2.96	3.06	3.06	0.00	0.00	0.10	3.38
<b>Southeast Asia</b>																
Indonesia	12.25	12.10	12.00	12.00	4.76	4.78	4.79	4.79	37.00	36.70	36.50	36.50	0.00	0.00	-0.20	-0.54
Vietnam	7.65	7.62	7.67	7.67	5.79	5.83	5.91	5.91	27.66	27.77	28.30	28.30	0.00	0.00	0.53	1.92
Thailand	10.76	10.83	10.90	10.90	2.90	2.85	2.85	2.85	20.58	20.34	20.50	20.50	0.00	0.00	0.16	0.79
Burma	7.10	7.10	7.10	7.10	2.90	2.90	2.93	2.93	13.20	13.18	13.30	13.30	0.00	0.00	0.13	0.95
Philippines	4.84	4.74	4.70	4.70	4.01	3.93	4.05	4.05	12.24	11.73	12.00	12.00	0.00	0.00	0.27	2.28
Cambodia	3.18	3.19	3.19	3.19	2.86	2.89	2.92	2.92	5.55	5.63	5.69	5.69	0.00	0.00	0.06	0.98
Laos	0.96	0.86	0.99	0.99	3.29	3.12	3.30	3.30	2.00	1.68	2.05	2.05	0.00	0.00	0.37	22.02
Malaysia	0.70	0.70	0.70	0.70	4.03	4.01	4.01	4.01	1.82	1.83	1.83	1.83	0.00	0.00	0.00	0.00
<b>South America</b>																
Brazil	1.97	1.70	1.68	1.68	6.12	6.18	6.25	6.25	8.20	7.14	7.14	7.14	0.00	0.00	0.00	0.00
Peru	0.42	0.44	0.42	0.42	7.20	7.16	7.51	7.51	2.10	2.15	2.15	2.15	0.00	0.00	0.00	0.00
<b>Africa</b>																
Egypt	0.76	0.46	0.76	0.76	8.18	8.78	8.20	8.20	4.30	2.80	4.30	4.30	0.00	0.00	1.50	53.57
Madagascar	1.43	1.50	1.50	1.50	2.18	2.67	2.80	2.80	1.98	2.56	2.69	2.69	0.00	0.00	0.13	5.00
Nigeria	3.60	3.60	3.60	3.60	2.08	2.11	2.16	2.16	4.73	4.79	4.90	4.90	0.00	0.00	0.11	2.34
<b>European Union</b>	0.43	0.41	0.42	0.42	6.78	6.81	6.89	6.86	2.03	1.96	2.01	2.00	-0.01	-0.25	0.05	2.40
<b>Iran</b>	0.57	0.58	0.58	0.58	5.33	5.25	5.25	5.25	2.01	1.99	1.99	1.99	0.00	0.00	0.00	0.00
<b>Others</b>	11.74	11.77	11.80	11.80	2.99	2.97	2.95	2.95	23.07	22.95	22.82	22.87	0.05	0.22	-0.08	-0.36

Yield is on a rough basis, before the milling process. Production is on a milled basis, after the milling process.

**Table 10 Total Oilseed Area, Yield, and Production**  
**World and Selected Countries and Regions**

Country / Region	Area (Million hectares)				Yield (Metric tons per hectare)				Production (Million metric tons)				Change in Production			
	Prel.		2019/20 Proj.		Prel.		2019/20 Proj.		Prel.		2019/20 Proj.		From last month		From last year	
	2017/18	2018/19	Nov	Dec	2017/18	2018/19	Nov	Dec	2017/18	2018/19	Nov	Dec	MMT	Percent	MMT	Percent
<b>World Total</b>	--	--	--	--	--	--	--	--	581.45	596.59	571.30	574.62	3.33	0.58	-21.97	-3.68
<b>Total Foreign</b>	--	--	--	--	--	--	--	--	449.97	465.88	463.55	467.05	3.50	0.75	1.17	0.25
<b>Oilseed, Copra</b>	--	--	--	--	--	--	--	--	5.94	5.98	5.81	5.81	0.00	0.00	-0.17	-2.84
<b>Oilseed, Palm Kernel</b>	--	--	--	--	--	--	--	--	18.76	19.49	20.05	20.02	-0.04	-0.18	0.52	2.68
<b>Major Oilseeds</b>	247.19	248.92	244.14	244.91	2.25	2.29	2.23	2.24	556.76	571.12	545.43	548.80	3.36	0.62	-22.32	-3.91
<b>United States</b>	42.80	41.42	37.57	37.57	3.07	3.16	2.87	2.86	131.48	130.72	107.74	107.57	-0.17	-0.16	-23.14	-17.70
<b>Foreign Oilseeds</b>	204.39	207.50	206.58	207.34	2.08	2.12	2.12	2.13	425.28	440.40	437.69	441.22	3.53	0.81	0.82	0.19
<b>South America</b>	61.50	63.40	64.94	64.97	2.99	3.12	3.11	3.10	183.62	197.70	201.69	201.67	-0.02	-0.01	3.97	2.01
Brazil	36.56	37.73	38.64	38.76	3.44	3.22	3.30	3.30	125.68	121.64	127.47	127.76	0.29	0.23	6.12	5.03
Argentina	18.70	19.20	19.88	19.85	2.27	3.18	2.93	2.92	42.52	61.00	58.16	57.96	-0.20	-0.34	-3.04	-4.98
Paraguay	3.51	3.78	3.67	3.67	3.03	2.37	2.81	2.81	10.65	8.97	10.31	10.31	0.00	0.00	1.34	14.97
Bolivia	1.42	1.52	1.58	1.52	2.06	1.83	1.90	1.90	2.94	2.78	3.00	2.89	-0.11	-3.67	0.11	3.96
Uruguay	1.15	1.02	1.01	1.01	1.23	2.86	2.28	2.28	1.41	2.92	2.30	2.30	0.00	0.00	-0.62	-21.18
<b>China</b>	24.08	24.18	24.90	25.20	2.48	2.48	2.48	2.49	59.60	59.88	61.63	62.63	1.00	1.62	2.75	4.60
<b>South Asia</b>	38.34	39.51	39.61	39.81	1.02	0.99	0.98	0.98	39.02	38.95	38.73	39.17	0.44	1.14	0.23	0.58
India	34.87	36.40	36.28	36.48	0.99	0.96	0.96	0.98	34.64	34.78	34.81	35.59	0.79	2.26	0.82	2.36
Pakistan	3.11	2.75	2.98	2.98	1.27	1.37	1.18	1.06	3.96	3.75	3.51	3.16	-0.35	-9.87	-0.59	-15.83
<b>European Union</b>	12.41	12.39	11.20	11.18	2.85	2.64	2.68	2.68	35.34	32.76	29.99	29.98	-0.02	-0.06	-2.78	-8.50
<b>Former Soviet Union - 12</b>	24.37	25.48	25.28	25.78	1.66	1.80	1.80	1.87	40.45	45.73	45.49	48.26	2.76	6.07	2.52	5.51
Russia	10.66	12.18	12.40	12.90	1.45	1.54	1.56	1.62	15.48	18.73	19.40	20.90	1.50	7.73	2.17	11.61
Ukraine	9.57	9.23	9.03	9.03	2.07	2.42	2.38	2.49	19.81	22.31	21.50	22.50	1.00	4.65	0.19	0.85
Uzbekistan	1.25	1.10	1.05	1.05	1.21	1.17	1.12	1.31	1.51	1.28	1.18	1.37	0.20	16.77	0.09	6.94
<b>Canada</b>	12.23	11.69	10.72	10.63	2.38	2.37	2.38	2.36	29.10	27.67	25.55	25.06	-0.49	-1.91	-2.60	-9.41
<b>Africa</b>	21.35	22.14	21.66	21.58	0.99	1.03	0.96	0.96	21.23	22.85	20.70	20.71	0.01	0.04	-2.14	-9.36
Nigeria	4.09	4.09	4.07	4.07	1.31	1.36	1.16	1.16	5.34	5.58	4.70	4.70	0.00	0.00	-0.88	-15.70
South Africa	1.48	1.31	1.51	1.51	1.73	1.51	1.57	1.57	2.55	1.98	2.37	2.37	0.00	0.00	0.40	20.00
Tanzania	1.35	1.50	1.50	1.50	0.89	0.86	0.85	0.85	1.20	1.29	1.28	1.28	0.00	0.00	-0.01	-0.86
<b>Southeast Asia</b>	3.32	3.34	3.15	3.15	1.42	1.39	1.39	1.39	4.71	4.64	4.39	4.39	0.00	0.00	-0.26	-5.51
Indonesia	1.00	0.98	0.95	0.95	1.61	1.57	1.58	1.58	1.62	1.55	1.50	1.50	0.00	0.00	-0.05	-2.91
Burma	1.98	2.02	1.88	1.88	1.22	1.20	1.18	1.18	2.42	2.43	2.21	2.21	0.00	0.00	-0.21	-8.81
<b>Australia</b>	3.76	2.33	2.08	1.99	1.44	1.25	1.23	1.23	5.43	2.92	2.55	2.44	-0.11	-4.12	-0.48	-16.49
<b>Turkey</b>	1.25	1.33	1.38	1.38	2.53	2.63	2.41	2.36	3.17	3.49	3.33	3.27	-0.07	-1.98	-0.22	-6.28
<b>Others</b>	1.77	1.73	1.66	1.67	2.04	2.21	2.19	2.18	3.62	3.82	3.64	3.66	0.02	0.41	-0.17	-4.32

World Total and Total Foreign: (Major Oilseeds plus copra and palm kernel) Major Oilseeds: (soybeans, sunflowerseeds, peanuts(inshell), cottonseed and rapeseed)

**Table 11 Soybean Area, Yield, and Production**

Country / Region	Area (Million hectares)				Yield (Metric tons per hectare)				Production (Million metric tons)				Change in Production			
	2017/18	Prel.	2019/20 Proj.		2017/18	Prel.	2019/20 Proj.		2017/18	Prel.	2019/20 Proj.		From last month		From last year	
		2018/19	2018/19	Nov		Dec	2018/19	Nov		Dec	2018/19	Nov	Dec	MMT	Percent	MMT
<b>World</b>	124.48	125.48	122.72	122.98	2.75	2.85	2.74	2.74	341.99	358.21	336.56	337.48	0.92	0.27	-20.73	-5.79
<b>United States</b>	36.24	35.45	30.61	30.61	3.31	3.40	3.16	3.16	120.07	120.52	96.62	96.62	0.00	0.00	-23.90	-19.83
<b>Total Foreign</b>	88.24	90.03	92.11	92.37	2.52	2.64	2.60	2.61	221.93	237.69	239.95	240.86	0.92	0.38	3.17	1.33
<b>South America</b>																
Brazil	35.15	35.90	36.90	36.90	3.47	3.26	3.33	3.33	122.00	117.00	123.00	123.00	0.00	0.00	6.00	5.13
Argentina	16.30	16.60	17.50	17.50	2.32	3.33	3.03	3.03	37.80	55.30	53.00	53.00	0.00	0.00	-2.30	-4.16
Paraguay	3.38	3.70	3.60	3.60	3.10	2.39	2.83	2.83	10.48	8.85	10.20	10.20	0.00	0.00	1.35	15.25
Bolivia	1.32	1.40	1.45	1.40	2.14	1.93	2.00	2.00	2.82	2.70	2.90	2.80	-0.10	-3.45	0.10	3.70
Uruguay	1.10	0.97	0.95	0.95	1.21	2.93	2.32	2.32	1.33	2.83	2.20	2.20	0.00	0.00	-0.63	-22.21
<b>East Asia</b>																
China	8.25	8.40	9.00	9.30	1.85	1.89	1.90	1.95	15.28	15.90	17.10	18.10	1.00	5.85	2.20	13.84
Korea, South	0.05	0.05	0.05	0.05	1.87	1.75	1.80	1.80	0.09	0.09	0.09	0.09	0.00	0.00	0.00	3.37
Korea, North	0.15	0.15	0.15	0.15	1.49	1.50	1.50	1.50	0.22	0.23	0.23	0.23	0.00	0.00	0.00	0.00
Japan	0.15	0.15	0.15	0.15	1.66	1.45	1.69	1.69	0.25	0.21	0.25	0.25	0.00	0.00	0.04	18.78
<b>India</b>	10.40	11.33	11.25	11.25	0.80	0.96	0.80	0.80	8.35	10.93	9.00	9.00	0.00	0.00	-1.93	-17.66
<b>Canada</b>	2.94	2.54	2.30	2.30	2.63	2.86	2.61	2.61	7.72	7.27	6.00	6.00	0.00	0.00	-1.27	-17.43
<b>Former Soviet Union - 12</b>																
Russia	2.57	2.74	2.90	2.90	1.41	1.47	1.48	1.48	3.62	4.03	4.30	4.30	0.00	0.00	0.27	6.78
Ukraine	1.98	1.73	1.55	1.55	1.97	2.58	2.39	2.39	3.89	4.46	3.70	3.70	0.00	0.00	-0.76	-17.06
<b>European Union</b>	0.93	0.93	0.91	0.91	2.74	2.88	2.86	2.86	2.54	2.66	2.60	2.60	0.00	0.00	-0.06	-2.40
<b>Southeast Asia</b>																
Indonesia	0.42	0.41	0.40	0.40	1.29	1.27	1.28	1.28	0.54	0.52	0.51	0.51	0.00	0.00	-0.01	-1.92
Vietnam	0.06	0.05	0.05	0.05	1.50	1.53	1.52	1.52	0.09	0.08	0.08	0.08	0.00	0.00	-0.01	-6.17
Thailand	0.04	0.04	0.03	0.03	1.57	1.57	1.53	1.53	0.06	0.06	0.05	0.05	0.00	0.00	0.00	-5.45
Burma	0.14	0.15	0.15	0.15	1.04	1.07	1.07	1.07	0.15	0.16	0.16	0.16	0.00	0.00	0.00	0.00
<b>Serbia</b>	0.20	0.22	0.22	0.22	2.30	2.84	2.73	2.73	0.46	0.63	0.60	0.60	0.00	0.00	-0.03	-4.00
<b>Mexico</b>	0.26	0.19	0.14	0.15	1.65	1.75	1.57	1.57	0.43	0.34	0.22	0.24	0.02	6.82	-0.10	-29.85
<b>Africa</b>																
South Africa	0.79	0.73	0.80	0.80	1.96	1.60	1.81	1.81	1.54	1.17	1.45	1.45	0.00	0.00	0.28	23.93
Nigeria	1.00	1.00	1.00	1.00	0.99	1.05	1.10	1.10	0.99	1.05	1.10	1.10	0.00	0.00	0.05	4.36
Zambia	0.23	0.19	0.20	0.20	1.56	1.58	1.43	1.43	0.35	0.30	0.28	0.28	0.00	0.00	-0.02	-7.26
Uganda	0.05	0.05	0.05	0.05	0.60	0.60	0.60	0.60	0.03	0.03	0.03	0.03	0.00	0.00	0.00	0.00
<b>Middle East</b>																
Iran	0.08	0.07	0.07	0.07	2.41	2.29	2.43	2.43	0.20	0.16	0.17	0.17	0.00	0.00	0.01	6.25
Turkey	0.02	0.03	0.03	0.03	3.75	3.80	3.89	3.89	0.09	0.10	0.11	0.11	0.00	0.00	0.01	10.53
<b>Others</b>	0.31	0.33	0.32	0.32	1.95	1.98	1.97	1.97	0.61	0.65	0.62	0.62	0.00	0.00	-0.03	-4.29

World and Selected Countries and Regions



**Table 12 Cottonseed Area, Yield, and Production**

Country / Region	Area (Million hectares)				Yield (Metric tons per hectare)				Production (Million metric tons)				Change in Production			
	2017/18	Prel.	2019/20 Proj.		2017/18	Prel.	2019/20 Proj.		2017/18	Prel.	2019/20 Proj.		From last month		From last year	
		2018/19	Nov	Dec		2018/19	Nov	Dec		2018/19	Nov	Dec	MMT	Percent	MMT	Percent
<b>World</b>	33.10	32.89	34.23	34.20	1.36	1.32	1.30	1.30	45.15	43.25	44.61	44.30	-0.30	-0.68	1.05	2.43
<b>United States</b>	4.49	4.13	5.06	5.06	1.30	1.24	1.16	1.12	5.83	5.11	5.85	5.68	-0.17	-2.90	0.58	11.28
<b>Total Foreign</b>	28.61	28.76	29.17	29.14	1.37	1.33	1.33	1.33	39.33	38.14	38.75	38.62	-0.13	-0.35	0.48	1.25
<b>South Asia</b>																
India	12.60	12.60	13.00	13.00	0.98	0.87	0.98	0.96	12.31	10.95	12.74	12.52	-0.21	-1.67	1.57	14.34
Pakistan	2.70	2.30	2.50	2.50	1.32	1.43	1.21	1.07	3.55	3.29	3.03	2.69	-0.35	-11.41	-0.61	-18.41
<b>China</b>	3.40	3.50	3.45	3.45	3.18	3.11	3.10	3.10	10.80	10.88	10.68	10.68	0.00	0.00	-0.20	-1.80
<b>Former Soviet Union - 12</b>																
Uzbekistan	1.25	1.10	1.05	1.05	1.21	1.17	1.12	1.31	1.51	1.28	1.18	1.37	0.20	16.77	0.09	6.94
Turkmenistan	0.55	0.55	0.55	0.55	0.96	0.65	0.72	0.72	0.53	0.36	0.39	0.39	0.00	0.00	0.04	9.83
Tajikistan	0.19	0.18	0.18	0.18	0.97	0.90	0.94	0.94	0.18	0.16	0.17	0.17	0.00	0.00	0.01	4.94
Kazakhstan	0.13	0.13	0.12	0.12	0.94	1.05	0.94	1.21	0.12	0.14	0.11	0.14	0.03	28.18	0.01	4.44
<b>South America</b>																
Brazil	1.18	1.62	1.50	1.62	2.57	2.53	2.53	2.52	3.02	4.10	3.80	4.09	0.29	7.69	-0.01	-0.20
Argentina	0.32	0.38	0.36	0.36	0.87	1.09	1.03	1.03	0.28	0.41	0.37	0.37	0.00	0.00	-0.04	-10.63
<b>Middle East</b>																
Turkey	0.47	0.52	0.56	0.56	2.77	2.60	2.22	2.10	1.30	1.35	1.24	1.18	-0.07	-5.32	-0.18	-12.96
Syria	0.03	0.03	0.03	0.03	2.17	2.36	2.40	2.40	0.07	0.06	0.06	0.06	0.00	0.00	0.00	1.69
Iran	0.09	0.08	0.08	0.08	0.96	1.16	1.16	1.16	0.08	0.09	0.09	0.09	0.00	0.00	0.00	0.00
<b>Australia</b>	0.53	0.38	0.17	0.08	2.72	1.74	2.12	3.19	1.44	0.66	0.36	0.26	-0.11	-29.17	-0.41	-61.42
<b>European Union</b>	0.30	0.31	0.34	0.35	1.65	1.76	1.76	1.81	0.49	0.55	0.59	0.63	0.03	5.56	0.08	14.00
<b>Africa</b>																
Burkina	0.85	0.63	0.60	0.60	0.39	0.37	0.44	0.44	0.33	0.24	0.26	0.26	0.00	0.00	0.03	11.49
Mali	0.71	0.73	0.78	0.78	0.56	0.50	0.54	0.54	0.40	0.36	0.42	0.42	0.00	0.00	0.06	17.55
Cameroon	0.23	0.25	0.25	0.26	1.11	1.20	1.13	1.24	0.25	0.30	0.28	0.32	0.04	14.18	0.02	7.33
Cote d'Ivoire	0.33	0.39	0.43	0.43	0.66	0.60	0.57	0.60	0.22	0.23	0.24	0.25	0.01	5.39	0.02	8.55
Benin	0.53	0.65	0.68	0.68	0.71	0.71	0.71	0.71	0.38	0.46	0.48	0.48	0.00	0.00	0.02	3.46
Tanzania	0.35	0.50	0.50	0.50	0.29	0.37	0.35	0.35	0.10	0.19	0.18	0.18	0.00	0.00	-0.01	-5.91
Egypt	0.09	0.14	0.10	0.10	1.00	1.08	1.06	1.06	0.09	0.15	0.11	0.11	0.00	0.00	-0.05	-30.26
Nigeria	0.27	0.27	0.27	0.27	0.38	0.38	0.38	0.38	0.10	0.10	0.10	0.10	0.00	0.00	0.00	0.00
Uganda	0.08	0.08	0.08	0.08	1.91	1.40	1.45	1.45	0.15	0.11	0.11	0.11	0.00	0.00	0.00	3.81
Zimbabwe	0.20	0.20	0.20	0.20	0.52	0.38	0.36	0.36	0.10	0.08	0.07	0.07	0.00	0.00	0.00	-5.26
Sudan	0.18	0.18	0.20	0.20	1.35	1.42	1.54	1.54	0.24	0.26	0.31	0.31	0.00	0.00	0.05	20.78
<b>Mexico</b>	0.21	0.24	0.23	0.23	2.52	2.44	2.39	2.39	0.53	0.59	0.54	0.54	0.00	0.00	-0.06	-9.44
<b>Burma</b>	0.25	0.24	0.24	0.24	1.24	1.23	1.20	1.20	0.31	0.30	0.29	0.29	0.00	0.00	-0.01	-2.03
<b>Others</b>	0.63	0.59	0.76	0.68	0.72	0.86	0.73	0.81	0.45	0.51	0.56	0.55	-0.01	-1.79	0.04	8.30

World and Selected Countries and Regions

**Table 13 Peanut Area, Yield, and Production**

Country / Region	Area (Million hectares)				Yield (Metric tons per hectare)				Production (Million metric tons)				Change in Production						
	2017/18	Prel.		2019/20 Proj.		2017/18	Prel.		2019/20 Proj.		2017/18	Prel.		2019/20 Proj.		From last month		From last year	
		2018/19	Nov	Dec	2018/19		Nov	Dec	2018/19	Nov		Dec	MMT	Percent	MMT	Percent			
<b>World</b>	27.14	27.78	26.31	26.51	1.72	1.67	1.69	1.72	46.78	46.41	44.52	45.52	1.00	2.25	-0.90	-1.94			
<b>United States</b>	0.72	0.56	0.56	0.56	4.49	4.48	4.57	4.57	3.23	2.49	2.56	2.56	0.00	0.00	0.07	2.69			
<b>Total Foreign</b>	26.42	27.22	25.75	25.95	1.65	1.61	1.63	1.66	43.55	43.92	41.96	42.96	1.00	2.38	-0.97	-2.20			
<b>China</b>	4.61	4.56	4.60	4.60	3.71	3.73	3.80	3.80	17.09	17.00	17.50	17.50	0.00	0.00	0.50	2.94			
<b>Africa</b>																			
Nigeria	2.82	2.82	2.80	2.80	1.51	1.57	1.25	1.25	4.25	4.42	3.50	3.50	0.00	0.00	-0.92	-20.85			
Sudan	2.22	3.07	2.30	2.30	0.74	0.94	0.78	0.78	1.65	2.88	1.80	1.80	0.00	0.00	-1.08	-37.59			
Senegal	1.25	1.25	1.20	1.20	1.13	1.16	0.92	0.92	1.41	1.45	1.10	1.10	0.00	0.00	-0.35	-24.14			
Cameroon	0.43	0.43	0.43	0.43	1.40	1.40	1.40	1.40	0.60	0.60	0.60	0.60	0.00	0.00	0.00	0.00			
Ghana	0.34	0.34	0.34	0.34	1.28	1.55	1.31	1.31	0.43	0.52	0.44	0.44	0.00	0.00	-0.08	-15.38			
Chad	0.77	0.77	0.77	0.77	1.13	1.16	1.10	1.10	0.87	0.89	0.85	0.85	0.00	0.00	-0.04	-4.49			
Malawi	0.39	0.37	0.37	0.37	0.99	0.88	0.88	0.88	0.39	0.33	0.33	0.33	0.00	0.00	0.00	0.00			
Congo (Kinshasa)	0.50	0.50	0.50	0.50	0.85	0.85	0.85	0.85	0.42	0.42	0.42	0.42	0.00	0.00	0.00	0.00			
Niger	0.92	0.93	0.90	0.90	0.50	0.64	0.56	0.56	0.46	0.59	0.50	0.50	0.00	0.00	-0.09	-15.54			
Mali	0.39	0.38	0.43	0.43	0.78	1.31	1.00	1.00	0.30	0.49	0.43	0.43	0.00	0.00	-0.07	-13.44			
Uganda	0.43	0.43	0.43	0.43	0.71	0.71	0.71	0.71	0.30	0.30	0.30	0.30	0.00	0.00	0.00	0.00			
Burkina	0.56	0.56	0.56	0.56	0.60	0.59	0.80	0.80	0.33	0.33	0.45	0.45	0.00	0.00	0.12	36.36			
Guinea	0.67	0.68	0.68	0.68	1.04	1.13	1.10	1.10	0.70	0.77	0.75	0.75	0.00	0.00	-0.02	-2.60			
Egypt	0.06	0.06	0.06	0.06	3.20	3.20	3.20	3.20	0.21	0.21	0.21	0.21	0.00	0.00	0.00	0.00			
Central African Republic	0.10	0.10	0.10	0.10	1.50	1.50	1.50	1.50	0.15	0.15	0.15	0.15	0.00	0.00	0.00	0.00			
South Africa	0.06	0.02	0.05	0.05	1.36	1.25	1.50	1.50	0.08	0.03	0.08	0.08	0.00	0.00	0.05	200.00			
Mozambique	0.40	0.38	0.38	0.38	0.23	0.34	0.34	0.34	0.09	0.13	0.13	0.13	0.00	0.00	0.00	0.00			
Cote d'Ivoire	0.15	0.15	0.15	0.15	1.39	1.45	1.45	1.45	0.20	0.21	0.21	0.21	0.00	0.00	0.00	0.00			
Benin	0.16	0.19	0.19	0.19	0.88	1.19	0.92	0.92	0.14	0.23	0.18	0.18	0.00	0.00	-0.05	-22.57			
<b>South Asia</b>																			
India	4.89	4.99	4.50	4.70	1.36	0.95	1.16	1.32	6.65	4.72	5.20	6.20	1.00	19.23	1.48	31.36			
Pakistan	0.09	0.10	0.09	0.09	0.97	0.95	0.98	0.98	0.09	0.09	0.09	0.09	0.00	0.00	0.00	1.11			
<b>Southeast Asia</b>																			
Indonesia	0.58	0.57	0.55	0.55	1.85	1.80	1.80	1.80	1.08	1.03	0.99	0.99	0.00	0.00	-0.04	-3.41			
Burma	0.99	1.03	0.89	0.89	1.59	1.53	1.55	1.55	1.57	1.58	1.38	1.38	0.00	0.00	-0.21	-13.14			
Vietnam	0.19	0.19	0.19	0.19	2.37	2.41	2.47	2.47	0.45	0.46	0.47	0.47	0.00	0.00	0.01	2.40			
Thailand	0.02	0.02	0.02	0.02	1.67	1.67	1.67	1.67	0.04	0.04	0.04	0.04	0.00	0.00	0.00	0.00			
<b>South America</b>																			
Argentina	0.38	0.32	0.32	0.32	2.27	4.43	3.92	3.92	0.87	1.42	1.26	1.26	0.00	0.00	-0.16	-11.50			
Brazil	0.14	0.15	0.16	0.16	3.71	2.96	3.55	3.55	0.52	0.44	0.55	0.55	0.00	0.00	0.12	26.44			
<b>Mexico</b>	0.06	0.06	0.06	0.06	1.70	1.70	1.73	1.73	0.10	0.10	0.10	0.10	0.00	0.00	0.01	5.15			
<b>Others</b>	1.88	1.83	1.75	1.75	1.13	1.15	1.13	1.13	2.13	2.12	1.98	1.98	0.00	0.00	-0.14	-6.48			

**Table 14 Sunflowerseed Area, Yield, and Production**

Country / Region	Area (Million hectares)				Yield (Metric tons per hectare)				Production (Million metric tons)				Change in Production						
	2017/18	Prel.		2019/20 Proj.		2017/18	Prel.		2019/20 Proj.		2017/18	Prel.		2019/20 Proj.		From last month		From last year	
		2018/19	Nov	Dec	2018/19		Nov	Dec	2018/19	Nov		Dec	MMT	Percent	MMT	Percent			
<b>World</b>	25.92	26.27	26.20	26.64	1.85	1.95	1.96	2.01	47.85	51.31	51.23	53.48	2.25	4.40	2.17	4.23			
<b>United States</b>	0.54	0.49	0.53	0.53	1.80	1.94	1.93	1.93	0.97	0.96	1.02	1.02	0.00	0.00	0.07	6.90			
<b>Total Foreign</b>	25.38	25.77	25.67	26.12	1.85	1.95	1.96	2.01	46.88	50.35	50.21	52.46	2.25	4.49	2.11	4.18			
<b>Former Soviet Union - 12</b>																			
Russia	7.15	7.94	8.00	8.50	1.45	1.60	1.63	1.71	10.36	12.71	13.00	14.50	1.50	11.54	1.79	14.08			
Ukraine	6.80	6.50	6.20	6.20	2.01	2.31	2.34	2.50	13.70	15.00	14.50	15.50	1.00	6.90	0.50	3.33			
Kazakhstan	0.88	0.85	0.80	0.80	1.02	1.00	1.00	1.00	0.90	0.85	0.80	0.80	0.00	0.00	-0.05	-5.66			
<b>European Union</b>	4.39	4.12	4.38	4.35	2.30	2.31	2.24	2.24	10.13	9.51	9.80	9.75	-0.05	-0.51	0.24	2.49			
<b>South America</b>																			
Argentina	1.68	1.88	1.68	1.65	2.11	2.04	2.08	2.00	3.54	3.83	3.50	3.30	-0.20	-5.71	-0.53	-13.73			
Uruguay	0.05	0.06	0.06	0.06	1.56	1.61	1.67	1.67	0.08	0.09	0.10	0.10	0.00	0.00	0.01	11.11			
Bolivia	0.11	0.12	0.13	0.12	1.11	0.70	0.77	0.75	0.12	0.08	0.10	0.09	-0.01	-10.00	0.01	12.50			
Brazil	0.10	0.07	0.08	0.08	1.48	1.71	1.50	1.50	0.14	0.11	0.12	0.12	0.00	0.00	0.01	8.11			
Paraguay	0.04	0.03	0.03	0.03	1.59	1.69	1.70	1.70	0.07	0.05	0.05	0.05	0.00	0.00	0.00	-5.56			
<b>China</b>	1.17	1.25	1.25	1.25	2.69	2.60	2.60	2.60	3.15	3.25	3.25	3.25	0.00	0.00	0.00	0.00			
<b>South Asia</b>																			
India	0.28	0.28	0.23	0.23	0.81	0.61	0.76	0.76	0.23	0.17	0.17	0.17	0.00	0.00	0.00	-1.16			
Pakistan	0.08	0.12	0.14	0.14	1.13	1.20	1.04	1.04	0.09	0.14	0.15	0.15	0.00	0.00	0.00	0.69			
<b>Middle East</b>																			
Turkey	0.70	0.72	0.73	0.73	2.21	2.52	2.40	2.40	1.55	1.80	1.75	1.75	0.00	0.00	-0.05	-2.78			
Iran	0.04	0.04	0.04	0.04	1.08	1.08	1.08	1.08	0.04	0.04	0.04	0.04	0.00	0.00	0.00	0.00			
Israel	0.01	0.01	0.01	0.01	1.60	1.60	1.60	1.60	0.02	0.02	0.02	0.02	0.00	0.00	0.00	0.00			
<b>Africa</b>																			
Egypt	0.01	0.01	0.01	0.01	2.38	2.38	2.38	2.38	0.02	0.02	0.02	0.02	0.00	0.00	0.00	0.00			
Morocco	0.02	0.02	0.02	0.02	1.26	1.29	1.25	1.25	0.02	0.03	0.03	0.03	0.00	0.00	0.00	-7.41			
South Africa	0.60	0.52	0.61	0.61	1.43	1.32	1.23	1.23	0.86	0.68	0.75	0.75	0.00	0.00	0.07	10.29			
<b>Burma</b>	0.60	0.60	0.60	0.60	0.65	0.65	0.65	0.65	0.39	0.39	0.39	0.39	0.00	0.00	0.00	0.00			
<b>Canada</b>	0.03	0.03	0.02	0.03	2.23	2.11	2.27	2.17	0.06	0.06	0.05	0.06	0.01	26.00	0.01	10.53			
<b>Australia</b>	0.01	0.02	0.02	0.02	1.86	1.21	1.25	1.25	0.03	0.02	0.03	0.03	0.00	0.00	0.00	8.70			
<b>Others</b>	0.63	0.61	0.64	0.64	2.21	2.48	2.49	2.49	1.38	1.50	1.60	1.60	0.00	0.00	0.10	6.66			

World and Selected Countries and Regions

**Table 15 Rapeseed Area, Yield, and Production**

Country / Region	Area (Million hectares)				Yield (Metric tons per hectare)				Production (Million metric tons)				Change in Production						
	2017/18	Prel.		2019/20 Proj.		2017/18	Prel.		2019/20 Proj.		2017/18	Prel.		2019/20 Proj.		From last month		From last year	
		2018/19	Nov	Dec	2018/19		Nov	Dec	2018/19	Nov		Dec	MMT	Percent	MMT	Percent			
<b>World</b>	36.55	36.51	34.68	34.58	2.05	1.97	1.98	1.97	74.99	71.94	68.52	68.02	-0.50	-0.73	-3.92	-5.44			
<b>United States</b>	0.81	0.79	0.81	0.81	1.71	2.09	2.08	2.08	1.39	1.64	1.69	1.69	0.00	0.00	0.05	2.98			
<b>Total Foreign</b>	35.74	35.72	33.87	33.77	2.06	1.97	1.97	1.96	73.60	70.29	66.83	66.33	-0.50	-0.75	-3.97	-5.64			
<b>European Union</b>	6.80	7.03	5.58	5.58	3.26	2.85	3.05	3.05	22.18	20.03	17.00	17.00	0.00	0.00	-3.03	-15.14			
<b>Canada</b>	9.27	9.12	8.40	8.30	2.30	2.23	2.32	2.29	21.33	20.34	19.50	19.00	-0.50	-2.56	-1.34	-6.60			
<b>China</b>	6.65	6.47	6.60	6.60	2.00	1.99	1.98	1.98	13.27	12.85	13.10	13.10	0.00	0.00	0.25	1.95			
<b>South Asia</b>																			
India	6.70	7.20	7.30	7.30	1.06	1.11	1.05	1.05	7.10	8.00	7.70	7.70	0.00	0.00	-0.30	-3.75			
Pakistan	0.24	0.23	0.24	0.24	0.96	0.98	0.98	0.98	0.23	0.23	0.24	0.24	0.00	0.00	0.01	4.44			
Bangladesh	0.25	0.25	0.25	0.25	0.92	0.92	0.92	0.92	0.23	0.23	0.23	0.23	0.00	0.00	0.00	0.00			
<b>Former Soviet Union - 12</b>																			
Russia	0.95	1.50	1.50	1.50	1.58	1.33	1.40	1.40	1.50	1.99	2.10	2.10	0.00	0.00	0.11	5.58			
Ukraine	0.79	1.00	1.28	1.28	2.80	2.85	2.58	2.58	2.22	2.85	3.30	3.30	0.00	0.00	0.45	15.79			
Belarus	0.33	0.35	0.30	0.30	1.81	1.31	1.63	1.63	0.60	0.46	0.49	0.49	0.00	0.00	0.03	7.46			
Kazakhstan	0.25	0.37	0.28	0.28	1.11	1.08	1.14	1.14	0.28	0.39	0.32	0.32	0.00	0.00	-0.07	-18.78			
<b>Australia</b>	3.17	1.89	1.85	1.85	1.23	1.15	1.14	1.14	3.89	2.18	2.10	2.10	0.00	0.00	-0.08	-3.67			
<b>South America</b>																			
Chile	0.06	0.05	0.06	0.06	3.89	3.85	4.11	4.11	0.22	0.19	0.23	0.23	0.00	0.00	0.05	24.32			
Paraguay	0.08	0.04	0.03	0.03	1.25	1.50	1.87	1.87	0.10	0.06	0.06	0.06	0.00	0.00	0.00	-6.67			
<b>Switzerland</b>	0.02	0.02	0.02	0.02	3.14	3.14	3.14	3.14	0.07	0.07	0.07	0.07	0.00	0.00	0.00	0.00			
<b>Ethiopia</b>	0.03	0.04	0.04	0.04	1.82	1.57	1.86	1.86	0.05	0.06	0.07	0.07	0.00	0.00	0.01	18.18			
<b>Others</b>	0.15	0.17	0.15	0.15	2.17	2.16	2.23	2.23	0.33	0.38	0.33	0.33	0.00	0.00	-0.04	-10.93			

World and Selected Countries and Regions

**Table 16 Copra, Palm Kernel, and Palm Oil Production**

Country / Region	Production (Million metric tons)				Change in Production			
	2017/18	Prel.	2019/20 Proj.		From last month		From last year	
		2018/19	Nov	Dec	MMT	Percent	MMT	Percent
<b>Oilseed, Copra</b>								
Philippines	2.60	2.63	2.50	2.50	0.00	0.00	-0.13	-4.94
Indonesia	1.65	1.64	1.60	1.60	0.00	0.00	-0.04	-2.44
India	0.75	0.75	0.75	0.75	0.00	0.00	0.00	0.00
Vietnam	0.28	0.29	0.29	0.29	0.00	0.00	0.00	0.00
Mexico	0.21	0.22	0.22	0.22	0.00	0.00	0.00	0.00
Papua New Guinea	0.10	0.10	0.10	0.10	0.00	0.00	0.00	0.00
Thailand	0.07	0.07	0.07	0.07	0.00	0.00	0.00	0.00
Sri Lanka	0.07	0.07	0.07	0.07	0.00	0.00	0.00	0.00
Solomon Islands	0.03	0.03	0.03	0.03	0.00	0.00	0.00	0.00
Cote d'Ivoire	0.03	0.03	0.03	0.03	0.00	0.00	0.00	0.00
World	5.94	5.98	5.81	5.81	0.00	0.00	-0.17	-2.84
<b>Oilseed, Palm Kernel</b>								
Indonesia	10.50	10.90	11.30	11.30	0.00	0.00	0.40	3.67
Malaysia	4.92	5.20	5.30	5.30	0.00	0.00	0.10	1.92
Thailand	0.82	0.87	0.89	0.89	0.00	0.00	0.02	2.30
Nigeria	0.73	0.73	0.73	0.73	0.00	0.00	0.00	0.00
Colombia	0.33	0.33	0.36	0.36	0.00	0.00	0.03	9.09
Guatemala	0.17	0.17	0.17	0.17	0.00	0.00	0.00	0.00
Papua New Guinea	0.16	0.16	0.17	0.13	-0.03	-18.75	-0.03	-18.75
Honduras	0.14	0.14	0.14	0.14	0.00	0.00	0.00	0.00
Brazil	0.13	0.14	0.14	0.14	0.00	0.00	0.00	0.00
Cote d'Ivoire	0.12	0.12	0.12	0.12	0.00	0.00	0.00	0.00
World	18.76	19.49	20.05	20.02	-0.03	-0.15	0.53	2.72
<b>Oil, Palm</b>								
Indonesia	39.50	41.50	43.00	43.00	0.00	0.00	1.50	3.61
Malaysia	19.68	20.80	21.00	21.00	0.00	0.00	0.20	0.96
Thailand	2.78	2.90	3.00	3.00	0.00	0.00	0.10	3.45
Colombia	1.63	1.63	1.68	1.68	0.00	0.00	0.06	3.70
Nigeria	1.03	1.02	1.02	1.02	0.00	0.00	0.00	0.00
Guatemala	0.85	0.85	0.85	0.85	0.00	0.00	0.00	0.00
Papua New Guinea	0.65	0.65	0.63	0.51	-0.12	-19.05	-0.14	-21.54
Ecuador	0.57	0.58	0.63	0.63	0.00	0.00	0.05	8.62
Honduras	0.58	0.58	0.58	0.58	0.00	0.00	0.00	0.00
Brazil	0.50	0.53	0.54	0.54	0.00	0.00	0.02	3.85
World	70.63	73.90	75.81	75.69	-0.12	-0.16	1.79	2.42

World and Selected Countries and Regions

**Table 17 Cotton Area, Yield, and Production**

Country / Region	Area (Million hectares)				Yield (Kilograms per hectare)				Production (Million 480 lb. bales)				Change in Production			
	2017/18	Prel.	2019/20 Proj.		2017/18	Prel.	2019/20 Proj.		2017/18	Prel.	2019/20 Proj.		From last month		From last year	
		2018/19	Nov	Dec		2018/19	Nov	Dec		2018/19	Nov	Dec	MBales	Percent	MBales	Percent
<b>World</b>	33.73	33.54	34.90	34.87	799	767	761	756	123.78	118.10	121.94	121.11	-0.83	-0.68	3.01	2.55
<b>United States</b>	4.49	4.13	5.06	5.06	1,014	968	895	869	20.92	18.37	20.82	20.21	-0.61	-2.94	1.84	10.01
<b>Total Foreign</b>	29.23	29.41	29.84	29.81	766	738	738	737	102.86	99.73	101.12	100.90	-0.22	-0.22	1.17	1.18
<b>South Asia</b>																
India	12.60	12.60	13.00	13.00	501	446	502	494	29.00	25.80	30.00	29.50	-0.50	-1.67	3.70	14.34
Pakistan	2.70	2.30	2.50	2.50	661	719	610	540	8.20	7.60	7.00	6.20	-0.80	-11.43	-1.40	-18.42
<b>China</b>	3.40	3.50	3.45	3.45	1,761	1,726	1,720	1,720	27.50	27.75	27.25	27.25	0.00	0.00	-0.50	-1.80
<b>South America</b>																
Brazil	1.18	1.62	1.50	1.62	1,708	1,683	1,684	1,680	9.22	12.52	11.60	12.50	0.90	7.76	-0.02	-0.16
Argentina	0.32	0.38	0.36	0.36	558	642	605	605	0.82	1.12	1.00	1.00	0.00	0.00	-0.12	-10.71
Paraguay	0.01	0.01	0.01	0.01	416	416	416	416	0.02	0.02	0.02	0.02	0.00	0.00	0.00	0.00
<b>Africa</b>																
Burkina	0.85	0.63	0.60	0.60	307	294	345	345	1.20	0.85	0.95	0.95	0.00	0.00	0.10	11.76
Mali	0.71	0.73	0.78	0.78	432	381	419	419	1.40	1.27	1.49	1.49	0.00	0.00	0.22	17.32
Cote d'Ivoire	0.33	0.39	0.43	0.43	536	486	461	487	0.81	0.88	0.90	0.95	0.05	5.56	0.08	8.57
Benin	0.53	0.65	0.68	0.68	468	469	468	468	1.14	1.40	1.45	1.45	0.00	0.00	0.05	3.57
Egypt	0.09	0.14	0.10	0.10	718	772	762	762	0.30	0.50	0.35	0.35	0.00	0.00	-0.15	-30.00
Cameroon	0.23	0.25	0.25	0.26	484	523	492	540	0.50	0.60	0.57	0.65	0.08	14.16	0.05	7.50
Tanzania	0.35	0.50	0.50	0.50	143	185	174	174	0.23	0.43	0.40	0.40	0.00	0.00	-0.03	-5.88
Nigeria	0.27	0.27	0.27	0.27	190	190	190	190	0.24	0.24	0.24	0.24	0.00	0.00	0.00	0.00
Zimbabwe	0.20	0.20	0.20	0.20	294	218	207	207	0.27	0.20	0.19	0.19	0.00	0.00	-0.01	-5.00
Ethiopia	0.06	0.08	0.08	0.08	639	687	680	680	0.18	0.24	0.25	0.25	0.00	0.00	0.01	2.88
<b>Former Soviet Union - 12</b>																
Uzbekistan	1.25	1.10	1.05	1.05	672	648	622	726	3.86	3.28	3.00	3.50	0.50	16.67	0.23	6.87
Turkmenistan	0.55	0.55	0.55	0.55	535	364	399	399	1.34	0.91	1.00	1.00	0.00	0.00	0.09	9.89
Tajikistan	0.19	0.18	0.18	0.18	671	502	532	532	0.57	0.42	0.44	0.44	0.00	0.00	0.03	6.02
Kazakhstan	0.13	0.13	0.12	0.12	523	587	558	670	0.30	0.35	0.30	0.36	0.06	20.00	0.02	4.35
<b>Middle East</b>																
Turkey	0.47	0.52	0.56	0.56	1,853	1,549	1,477	1,400	4.00	3.70	3.80	3.60	-0.20	-5.26	-0.10	-2.70
Syria	0.03	0.03	0.03	0.03	1,161	1,219	1,219	1,219	0.16	0.14	0.14	0.14	0.00	0.00	0.00	0.00
Iran	0.09	0.08	0.08	0.08	640	748	748	748	0.25	0.28	0.28	0.28	0.00	0.00	0.00	0.00
<b>Australia</b>	0.53	0.38	0.17	0.08	1,972	1,261	1,537	2,313	4.80	2.20	1.20	0.85	-0.35	-29.17	-1.35	-61.36
<b>Mexico</b>	0.21	0.24	0.23	0.23	1,617	1,555	1,529	1,529	1.56	1.74	1.58	1.58	0.00	0.00	-0.16	-8.93
<b>Burma</b>	0.25	0.24	0.24	0.24	634	635	635	635	0.73	0.70	0.70	0.70	0.00	0.00	0.00	0.00
<b>Others</b>	1.74	1.72	1.95	1.88	535	585	561	588	4.28	4.63	5.04	5.08	0.04	0.79	0.45	9.73

World and Selected Countries and Regions

**TABLE 18**

The table below presents a record of the December projection and the final Estimate. Using world wheat production as an example, the "root mean square error" means that chances are 2 out of 3 that the current forecast will not be above or below the final estimate by more than 0.8 percent. Chances are 9 out of 10 (90% confidence level) that the difference will not exceed 1.4 percent. The average difference between the December projection and the final estimate is 3.9 million tons, ranging from 0.4 million to 10.2 million tons. The December projection has been below the estimate 28 times and above 10 times.

**RELIABILITY OF PRODUCTION PROJECTIONS 1/**

COMMODITY AND REGION	Root mean square error	90 percent confidence interval	Difference between forecast and final estimate				
			Average	Smallest	Largest	Years	
						Below final	Above final
	Percent		---Million metric tons---				
<b>WHEAT</b>							
World	0.8	1.4	3.9	0.4	10.2	28	10
U.S.	0.4	0.7	0.2	0.0	1.2	18	14
Foreign	0.9	1.6	3.9	0.3	10.3	28	10
<b>COARSE GRAINS 2/</b>							
World	1.5	2.5	12.5	0.0	36.0	28	10
U.S.	1.3	2.2	2.4	0.0	7.5	19	19
Foreign	2.1	3.5	12.7	0.3	37.5	27	11
<b>RICE (Milled)</b>							
World	2.0	3.3	5.7	0.0	16.2	31	7
U.S.	2.9	4.9	0.1	0.0	0.5	19	14
Foreign	2.0	3.4	5.8	0.1	16.2	32	6
<b>SOYBEANS</b>							
World	3.8	6.4	5.6	0.1	23.8	21	17
U.S.	2.1	3.5	1.2	0.1	4.7	15	23
Foreign	6.2	10.6	5.6	0.1	25.1	18	20
<b>COTTON</b>			---Million 480-lb. bales---				
World	3.2	5.4	2.3	0.0	7.2	22	15
U.S.	2.0	3.5	0.2	0.0	0.8	18	19
Foreign	3.7	6.4	2.3	0.0	7.1	21	16
<b>UNITED STATES</b>			-----Million bushels-----				
<i>CORN</i>	1.3	2.2	89	0	250	19	18
<i>SORGHUM</i>	4.1	7.0	15	1	53	20	18
<i>BARLEY</i>	1.5	2.5	4	0	24	16	10
<i>OATS</i>	1.1	1.9	2	0	18	7	9

1/ Marketing years 1981/82 through 2018/19. Final for grains, soybeans and cotton is defined as the first *November* estimates following the marketing year for 1981/82 through 2017/18, and for 2018/19 last month's estimate.

2/ Includes corn, sorghum, barley, oats, rye, millet, and mixed grain

December 2019

Office of Global Analysis, FAS, USDA