



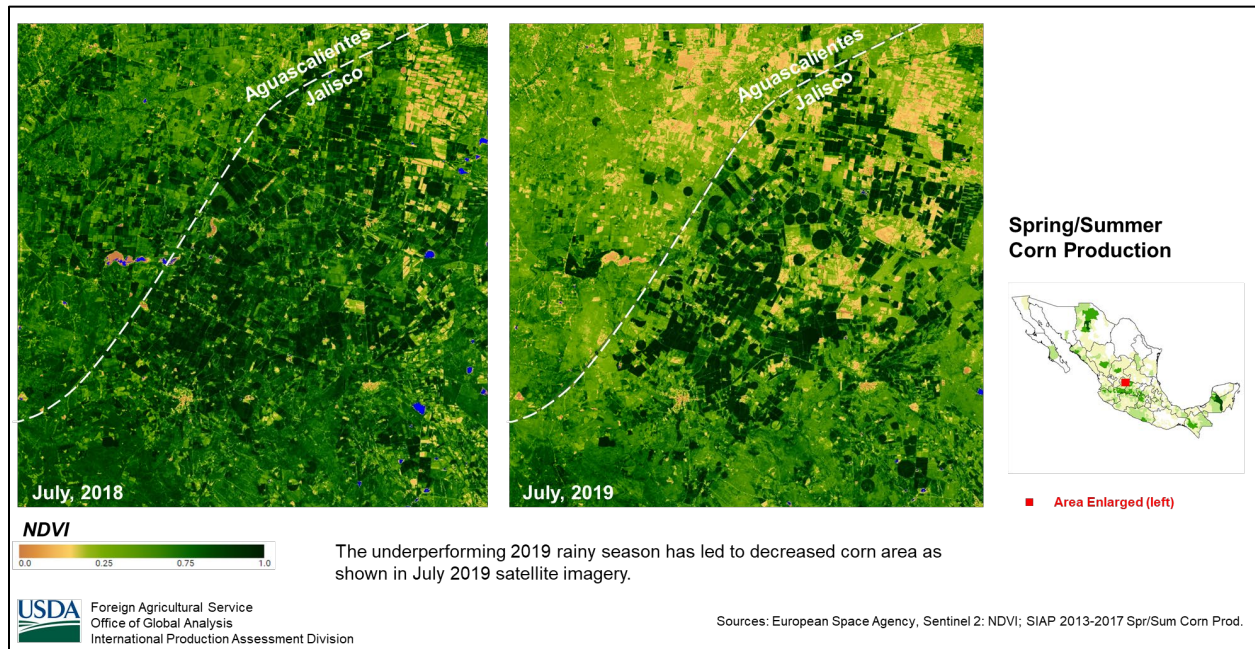
United States
Department of
Agriculture

Foreign
Agricultural
Service

Circular Series
WAP 11-19
November 2019

World Agricultural Production

Mexico Corn: Lowest Planted Area on Record

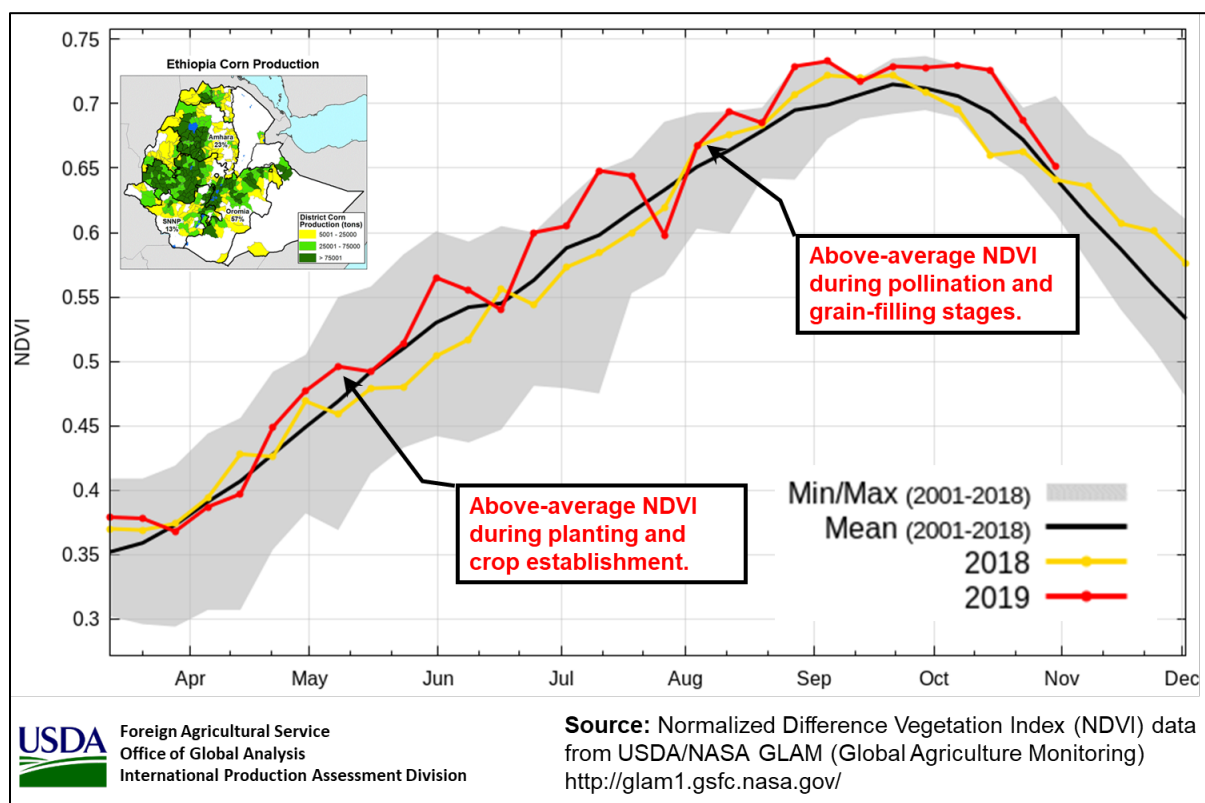


USDA estimates Mexico 2019/20 corn production at 25.0 million metric tons, down 7 percent from last month and down 9 percent from last year. Area harvested is estimated at 6.8 million hectares, down 7 percent from last month and down 6 percent from last year. Yield is estimated at 3.68 metric tons per hectare, down slightly from last month, but down 4 percent from last year.

Mexico corn is planted in two seasons, spring/summer (main) followed by fall/winter. The bulk of the production is in the spring/summer season, which accounts for 75 percent. The main corn season relies on rainfall for crop development while the second season is largely irrigated. Rainfall for the 2019 main corn crop underperformed throughout the season and was one of the contributing factors for the lowest planted area on record. The latest planting progress reports from Secretaría de Agricultura y Desarrollo Rural (SADER) / Servicio de Información Agrícola y Pesquera (SIAP) indicate corn planted area for the 2019 main season at 5.88 million hectares, down from 6.17 million hectares in 2018. The current spring/summer corn planted area estimate shows a continued decrease in the last two years. Harvest began in October and extends until January. The fall/winter crop is planted from November through February and is harvested mid-April through July. (For more information, please contact Justin.Jenkins@usda.gov).

Approved by the World Agricultural Outlook Board

Ethiopia Corn: Record Production Expected

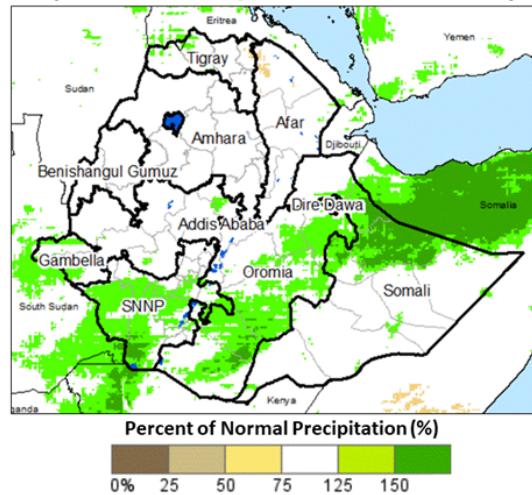


Ethiopia corn production for 2019/20 is estimated at a record 8.4 million metric tons (mmt), up 0.4 mmt from last month and up 0.05 mmt from last year. Harvested area is estimated at a record 2.3 million hectares, unchanged from last month and last year. Yield is estimated at 3.65 tons per hectare (t/ha), up 5 percent from last month and nearly equal to the 5-year-average yield. Ethiopia and South Africa are the only countries in Sub-Saharan Africa with average corn yields above 3 t/ha.

Record corn output is attributed to record area and well-distributed rainfall during the 2019 *meher* growing season from April through October. The 2019 *kiremt* rains arrived early in April and May and the timely rains assisted favorable germination and crop establishment in the major corn-producing zones. Seasonal rains were average to above average during most of the growing season. Crop conditions were also average to above average as measured by the satellite-derived Normalized Difference Vegetation Index.

Corn yield trends in Ethiopia continue to improve as government policies encouraged a green revolution with hybrid seeds and fertilizers. The major corn producing zones include small farms located at mid-altitude elevations ranging from 1,500 through 2,000 meters above mean sea level. Almost all corn production in Ethiopia is rainfed. Irrigated corn area is approximately one percent of the total area. *(For more information, please contact Curt.Reynolds@usda.gov)*

Percent of Normal Precipitation (June 1 - September 30, 2019)

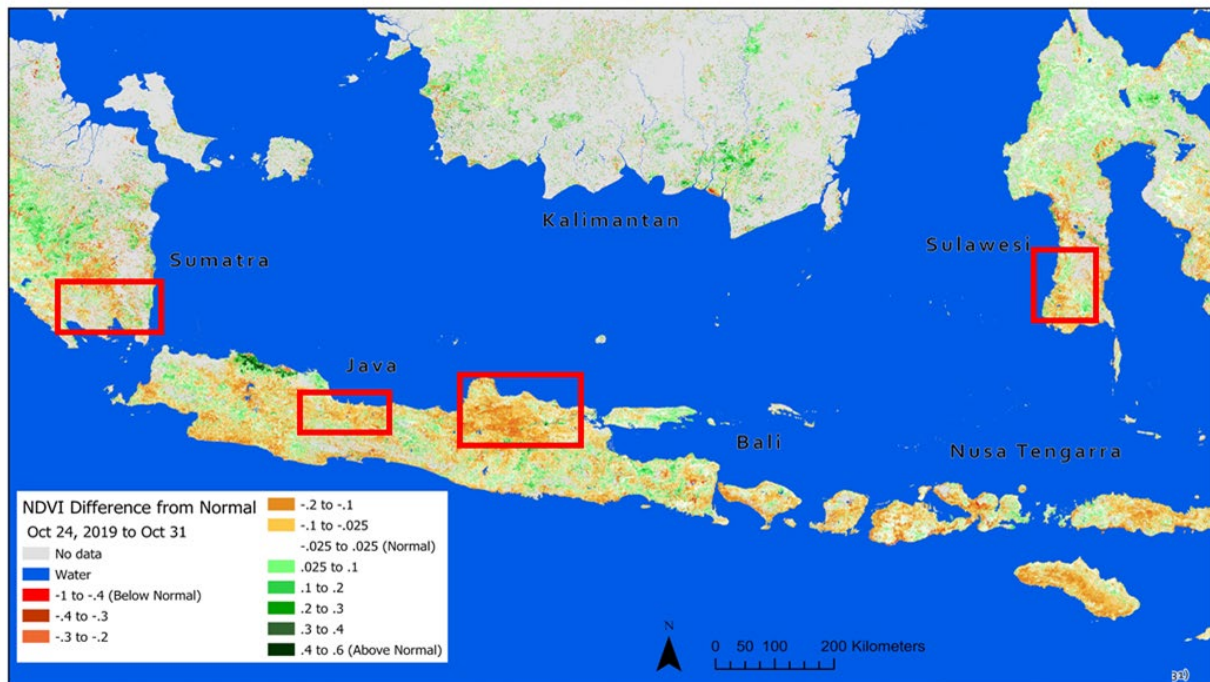


USDA Foreign Agricultural Service
Office of Global Analysis
International Production Assessment Division

Source: CHIRPS data from the University of California- Santa Barbara

Indonesia Rice: Delayed Monsoon Reduces Rice Area Forecast

Indonesia: MODIS NDVI Anomaly



USDA Foreign Agricultural Service
Office of Global Analysis
International Production Assessment Division

Source: Normalized Difference Vegetation Index (NDVI) data from USDA/NASA GLAM (Global Agriculture Monitoring) <http://glam1.gsfc.nasa.gov/>

USDA forecasts Indonesia 2019/20 rice production at 36.5 million metric tons (milled basis), down 2 percent from last month and down 1 percent from last year. Harvested area is forecast at 12.0 million hectares, down 2 percent from last month and down 1 percent from last year. Yield (rough

basis) is forecast at 4.79 metric tons per hectare (mt/ha), down slightly from last month, but marginally up from last year's estimate of 4.78 mt/ha.

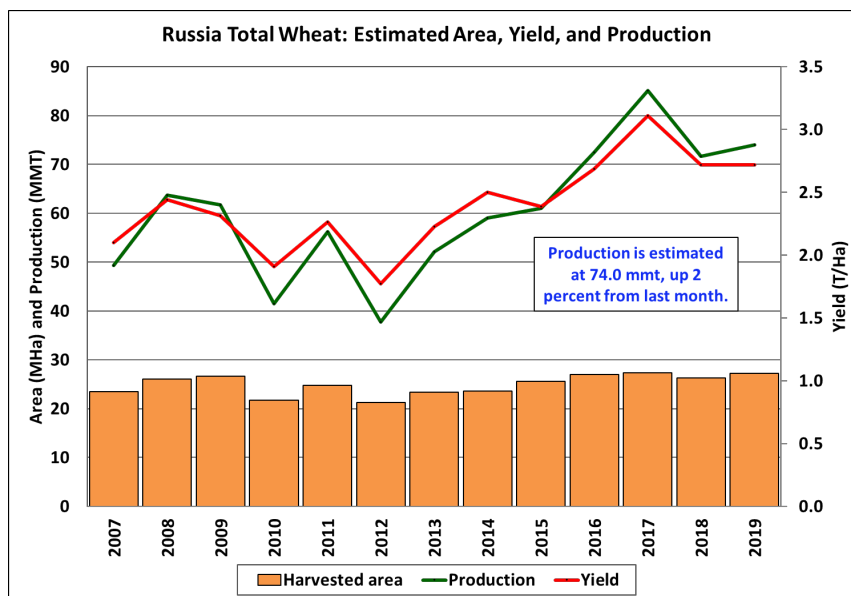
Rice in Indonesia is cultivated in three different cycles. Cultivation for the first cycle (main) is dependent on the onset of the wet season, which begins in October through December and is harvested in February through April. The main rice crop is 85 percent irrigated and represents about 45 percent of Indonesia's total rice output.

Rice harvested area is forecast to decrease in 2019/20 mainly due to the delayed onset of the wet season resulting in extreme dryness, most notably in the main producing islands of Java, and parts of southern Sumatra. Since mid-August, cumulative rainfall has trended at or below last year's drier-than-normal levels. Last year, the delayed onset of the 2018 wet season prevented farmers from starting rice cultivation until November. As a result, farmers opted to plant less water intensive crops. With the current low rainfall trend, however, farmers will opt to forego rice cultivation and plant other crops.

The second and third rice cycles are cultivated in the dry season, which begins cultivation from March to June and from July to October, respectively. *(For more information, please contact Justin.Jenkins@usda.gov).*

Russia Wheat: Harvest Nears Completion with Yield Similar to Last Year

Russia wheat production for 2019/20 is estimated at 74.0 million metric tons (mmt), up 2 percent from last month and up 3 percent from last year. The estimate includes 55.0 mmt of winter wheat and 19.0 mmt of spring wheat. USDA crop production estimates for Russia exclude output from Crimea. Total wheat yield is estimated at 2.72 tons per hectare, up 1 percent from last month and matching last year's yield. Total area is estimated at 27.2 million hectares, up 1 percent from last month.



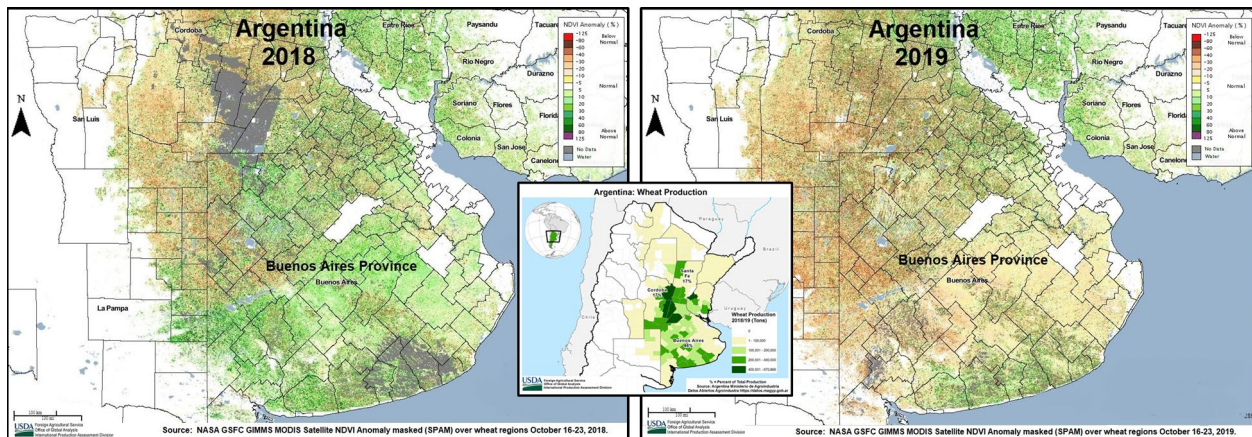
USDA Foreign Agricultural Service Office of Global Analysis International Production Assessment Division Sources: PSD Online, FAS Estimate (2019)

Winter wheat is grown in European Russia (including the Southern, Central, Volga, and North Caucasus districts) and typically accounts for about half of total wheat area and 70 percent of production. Harvest is complete and the month-to-month increase for winter wheat yield is primarily based on harvest yield data from the Ministry of Agriculture. Harvested area was revised upward for both winter wheat and spring wheat due to information from the Ministry of

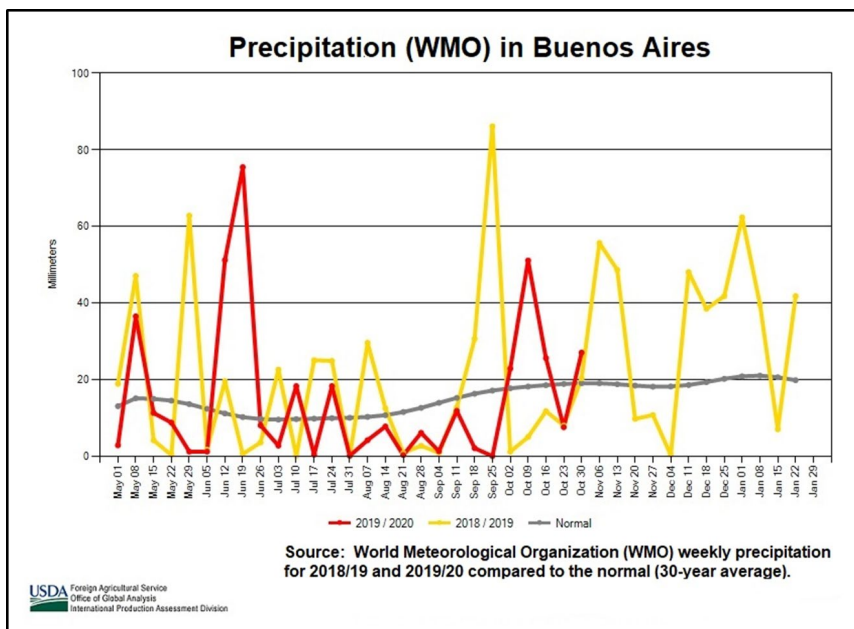
Agriculture. Spring wheat is primarily grown in Siberia, Urals and Volga districts. Spring wheat yields increased two percent from last month mostly due to the Ministry of Agriculture harvest reports.

Area, yield, and production estimates for Russia winter wheat and spring wheat are available on PSD Online. Select “Downloadable Data Sets” and open the zipped file for “Russia Wheat; Winter/Spring Area & Production” (For more information, please contact Katie.McGaughey@usda.gov.)

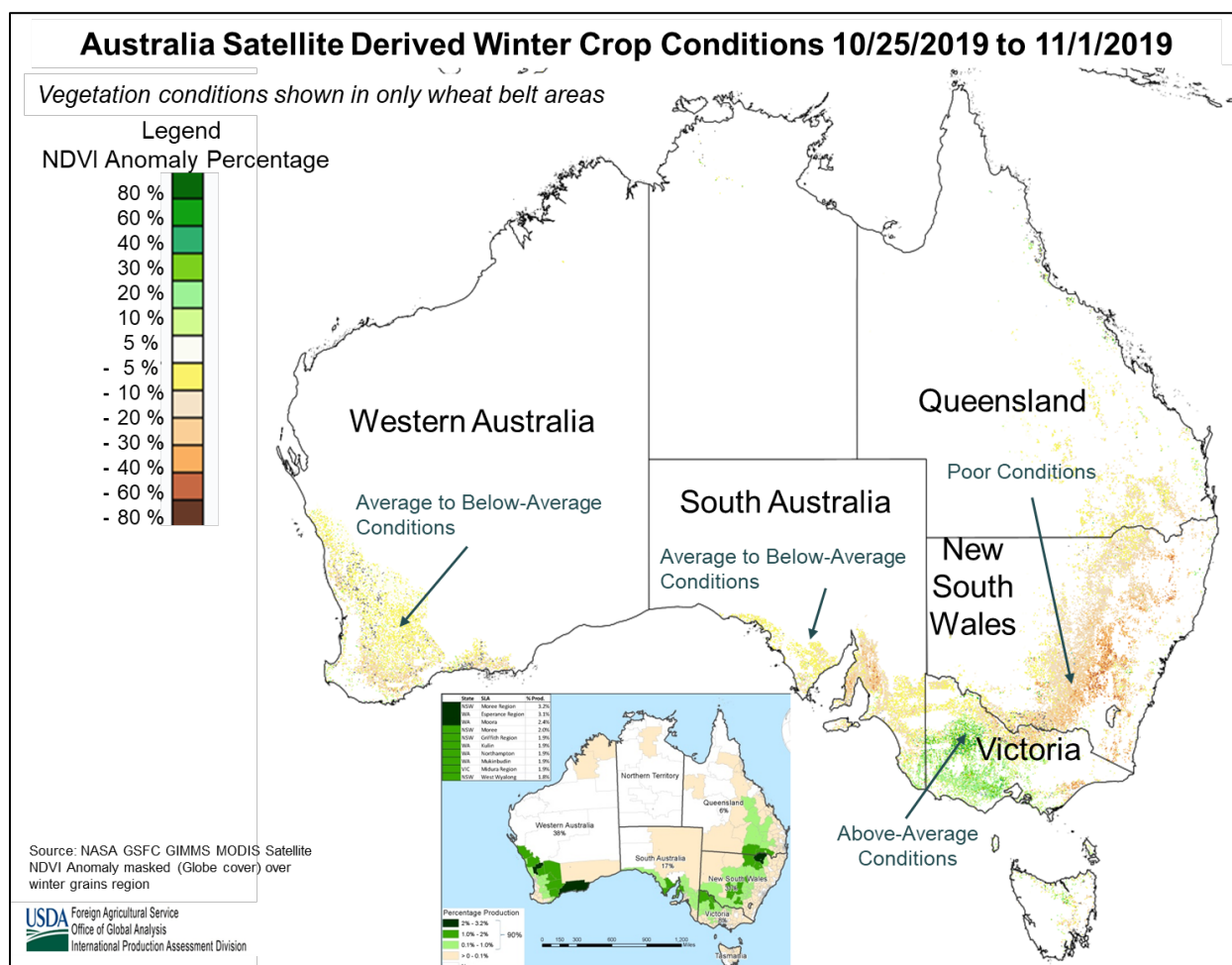
Argentina Wheat: Subsoil Moisture Mitigates Crop Damage



USDA estimates Argentine wheat production for 2019/20 at 20.0 million metric tons, down 2 percent from last month but, up 3 percent from last year. Area is estimated at 6.3 million hectares, unchanged from last month, but up 4 percent from last year. Yield is estimated at 3.17 tons per hectare, down 2 percent from last month and down almost 2 percent from last year. Some early yields in the northern region of Argentina have come in better than expected, despite a long period of very low rainfall during July through September throughout the country this season. Favorable soil profile moisture during emergence and establishment supplemented crop needs into booting and through grain-fill. During flowering and grain-fill the crop primarily relied on subsoil moisture. Rains in October helped boost final seed development toward harvest. (For more information, please contact Denise.McWilliams@usda.gov.)



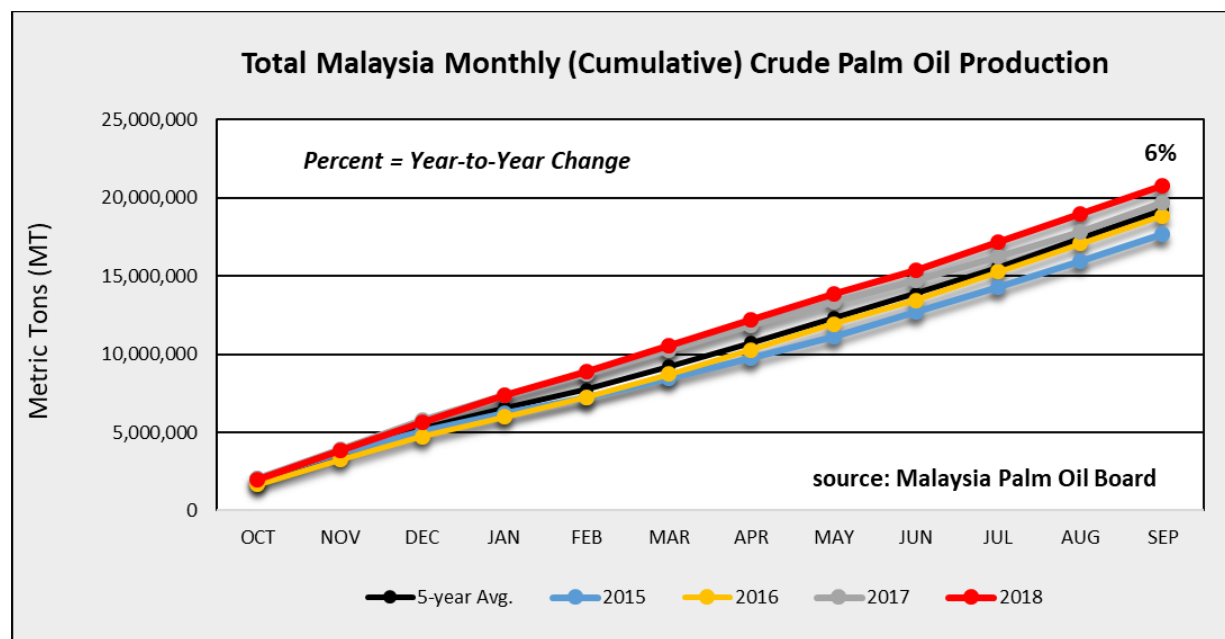
Australia Wheat: Production Revised Down after Dry October



USDA forecasts Australia’s 2019/20 wheat production at 17.2 million metric tons (mmt), down 0.8 mmt (4 percent) from last month, and down 0.1 mmt (1 percent) from last year. Harvested area is expected to total 10.6 million hectares (mha), down 0.1 mha (1 percent) from last month, but up 0.4 mha (4 percent) from last year. Yield is forecast at 1.62 tons per hectare, 20 percent below the 5-year average.

Following a locally good start to the growing season, Australia’s wheat prospects have slowly but steadily declined throughout the season. Sowing operations were facilitated by timely rainfall in May in most cropping regions of Western Australia, South Australia, Victoria, and southern New South Wales (NSW). However, the eastern states of Queensland (QLD) and northern NSW received below-normal precipitation for the entire season, resulting in significantly lower yield potential. Nationwide, the wheat crop faces deteriorating conditions heading into harvest, reflecting below-average October rainfall and soil moisture conditions. Satellite-derived vegetation indices show poor vegetation conditions, corroborating the low precipitation in QLD and NSW. Dry conditions have accelerated crop development. Harvesting is underway and the bulk should be complete by the end of December. *(For more information, please contact James.Crutchfield@usda.gov.)*

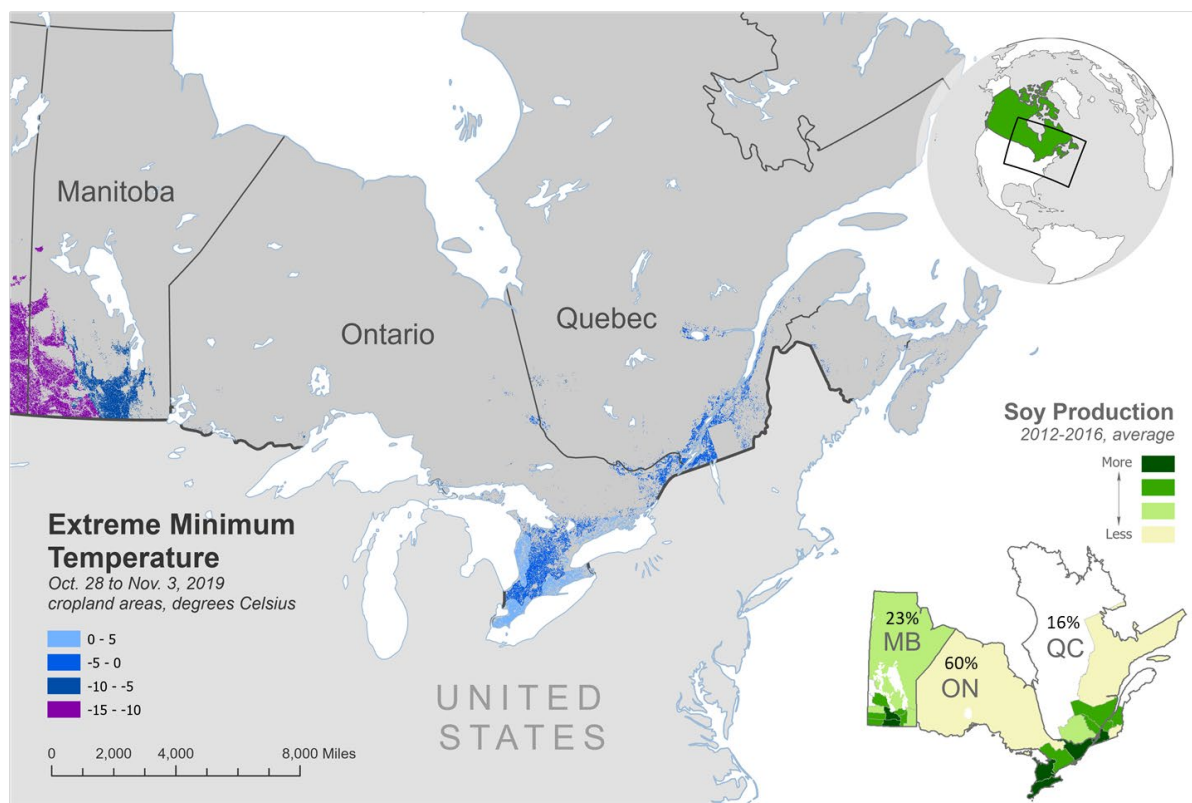
Malaysia Palm Oil: 2018/19 Estimated Production Benefits from Favorable Weather



USDA estimates Malaysia 2018/19 palm oil production at 20.8 million metric tons (mmt), down 1 percent from last month, but up 6 percent from last year. Harvested area is estimated at 5.3 million hectares, unchanged from last month, but up 100,000 hectares from last year. Yield is estimated at 3.92 metric tons per hectare, down 1 percent from last month, but up 4 percent from last year.

Palm oil is a water intensive crop. Over the past two consecutive years, rainfall in Malaysia's main palm producing regions has been above average, benefiting palm oil production. Since 2015, when extreme drought caused by El Niño led to one of the worst outputs since 2009, Malaysia's palm oil production has increased 18 percent. Latest reports from the Malaysia Palm Oil Board indicate crude palm oil production for the month of September at 20.81 mmt, up 6 percent from last year. Contributing factors such as favorable weather and improved labor situations have led to the year-to-year increase in crude palm oil production output for 2018/19. USDA's market year for Malaysia palm oil is October through September. *(For more information, please contact Justin.Jenkins@usda.gov).*

Canada Soybeans: Delayed Harvest from Early Snowfall and Concerns over Pod Shattering



USDA Foreign Agricultural Service
Office of Global Analysis
International Production Assessment Division

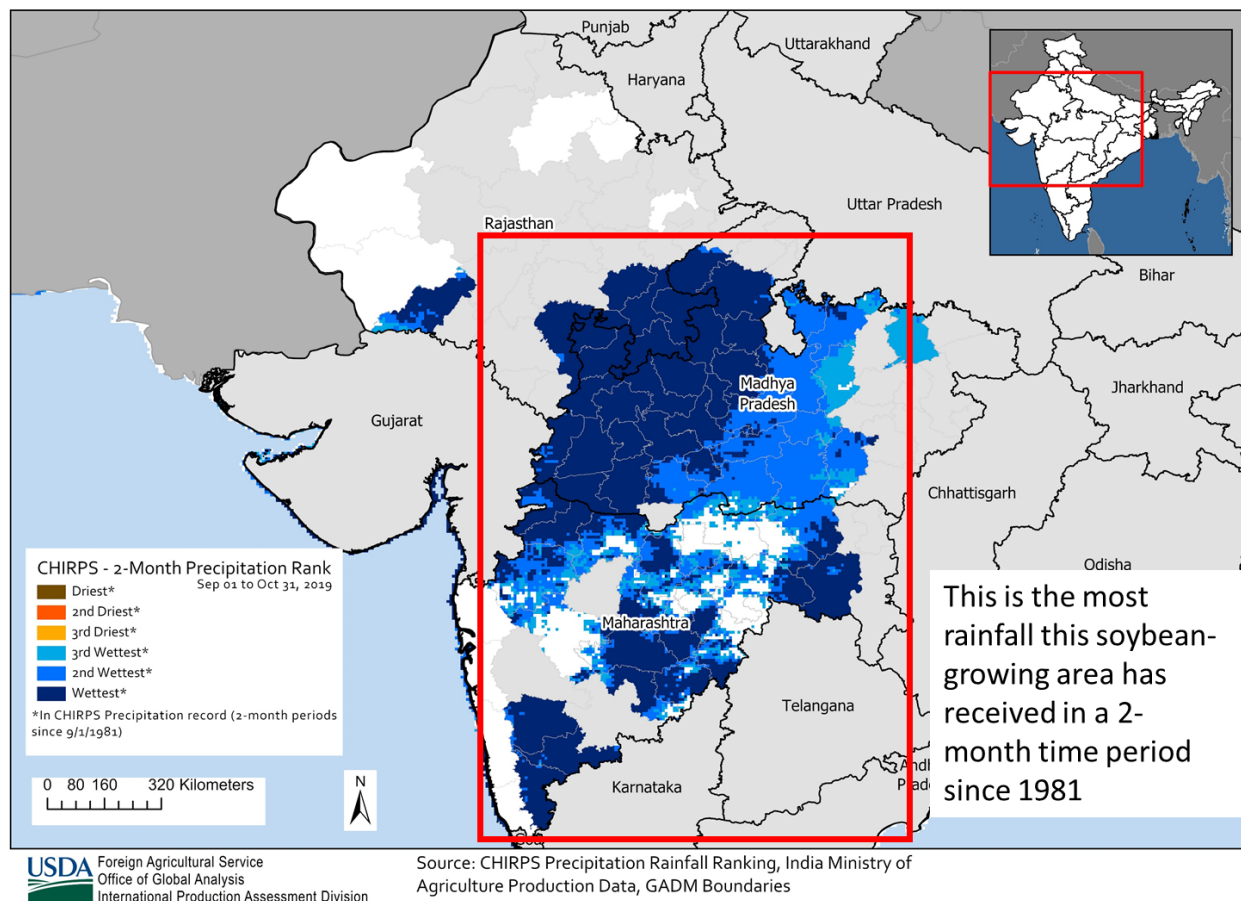
Sources: United States Air Force, Daily Minimum Temperature
Agriculture; Agri-Food Canada Annual Crop Inventory, 2018;
Statistics Canada, Small Area Data Region

Canada soybean production for 2019/20 is estimated at 6.0 million metric tons (mmt), down 0.5 mmt from last month and down 1.3 mmt from last year. Harvested area is estimated at 2.3 million hectares (mha), unchanged from last month and down 0.2 mha from last year. Yield is estimated at 2.61 tons per hectare, down 8 percent from last month, and down 9 percent from last year.

The month-to-month decrease in yield is attributed to an early winter snow storm that occurred in late September in the Canadian Prairies and nearly continuous snow cover since that initial event. The storm dropped several inches of snow on the Canadian Prairies. In addition to the snow, a season-ending freeze impacted immature crops in Manitoba, which produces about 23 percent of total national production. Harvest in Manitoba continued to be delayed, only 64 percent harvested as of October 29, as compared to 94 percent harvested for the previous three years. Harvest in all three soybean producing provinces, Manitoba, Ontario, and Quebec, continues through November, but below freezing temperatures in the last week of October have led to concerns over pod shattering and further delays in harvest. *(For more information, please contact Katie.McGaughey@usda.gov.)*

India Soybeans: Above-Average Rainfall Negatively Impacts Yields

India Soybean Production Areas: CHIRPS Rainfall Ranking

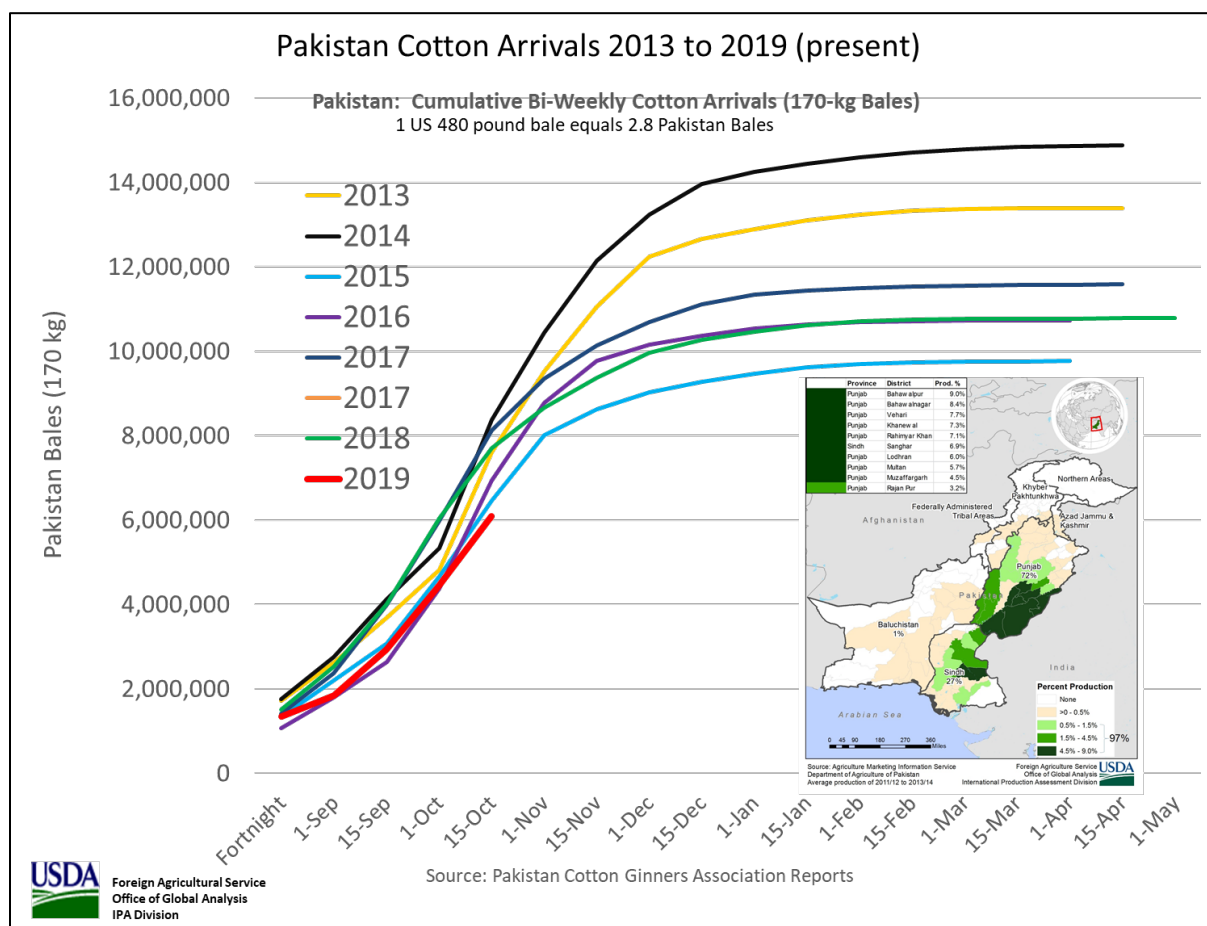


USDA estimates India 2019/20 soybean production at 9.0 million metric tons, down 18 percent from last month and last year. Area is estimated at 11.3 million hectares, up 2 percent from last month but down slightly from last year. Yield is estimated at 0.80 metric tons per hectare, down 20 percent from last month, and down 17 percent from last year.

Maharashtra, Madhya Pradesh and parts of Rajasthan received heavy rains from late July into October. Cumulative rainfall in Madhya Pradesh, which produces 50 percent of total soybean production, was the highest in nearly 40 years. Satellite-derived vegetation indices in August and September showed strong crop vigor in major soybeans areas of western Maharashtra, Rajasthan and Madhya Pradesh. As these rains continued, however, they had a negative impact on crop maturity and pod development. Central Madhya Pradesh, where recorded cumulative rainfall was well above normal, was impacted the most. In addition, trade sources reported root rot and pest infestations.

Soybeans are produced only in the *kharif* season. Western states of Maharashtra, Rajasthan, and Madhya Pradesh produce roughly 94 percent of total soybean production. Soybeans are harvested in late October and November. (For more information, please contact Arnella.Trent@usda.gov.)

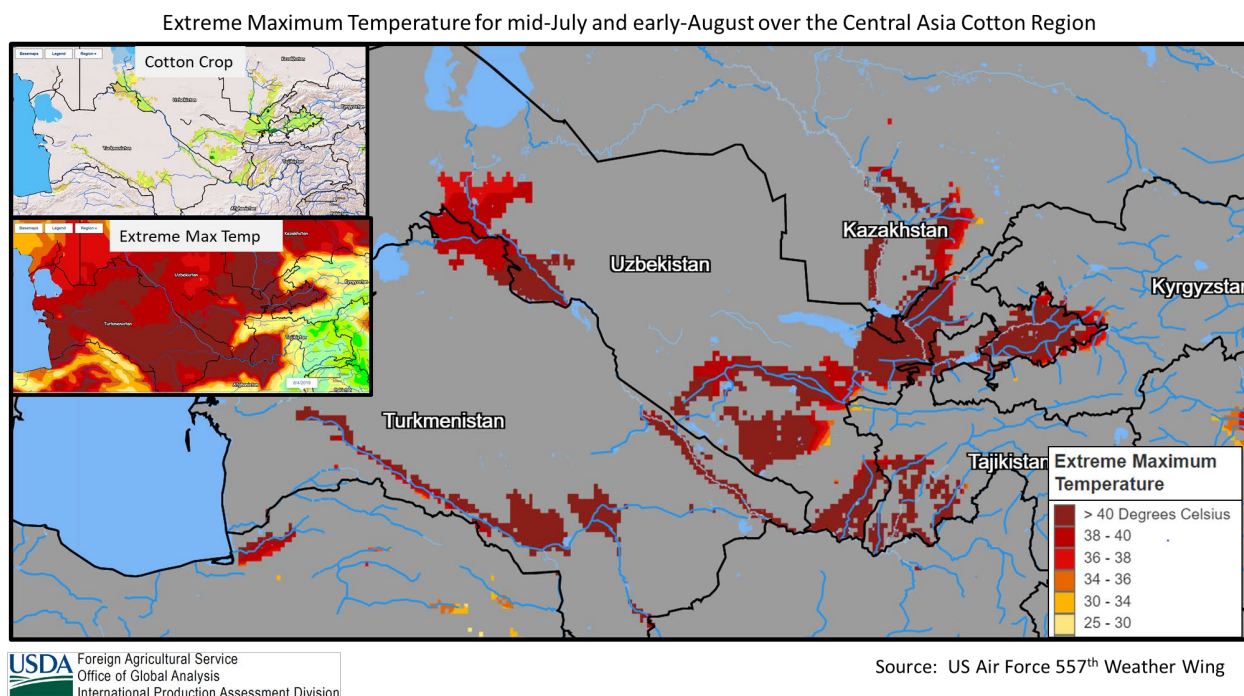
Pakistan Cotton: Production Revised Down on Lower Arrival Data



USDA estimates Pakistan’s cotton production at 7.0 million 480-pound bales, down 0.6 million bales from last month, and down 0.6 million bales from last year. Harvested area is estimated at 2.5 million hectares, unchanged from last month, but up 0.2 million hectares from last year. The yield is estimated at 610 kilograms per hectare, down 8 percent from last month and down 15 percent from last year.

Production is revised down due to lower arrivals. At the beginning of November, cumulative seed cotton arrivals at gins are 21 percent less than the same time last year, according to the Pakistan Cotton Ginner’s Association. At the provincial level, the arrivals are down 26 percent in Punjab and down 15 percent in Sindh. Cotton planting begins in April. Harvest began in August and is now more than half complete. Peak harvest typically occurs in October. The two major cotton producing provinces are Punjab (72 percent) and Sindh (27 percent). *(For more information, please contact James.Crutchfield@usda.gov.)*

Turkmenistan Cotton: Yield Estimate Lowered due to Extreme Heat

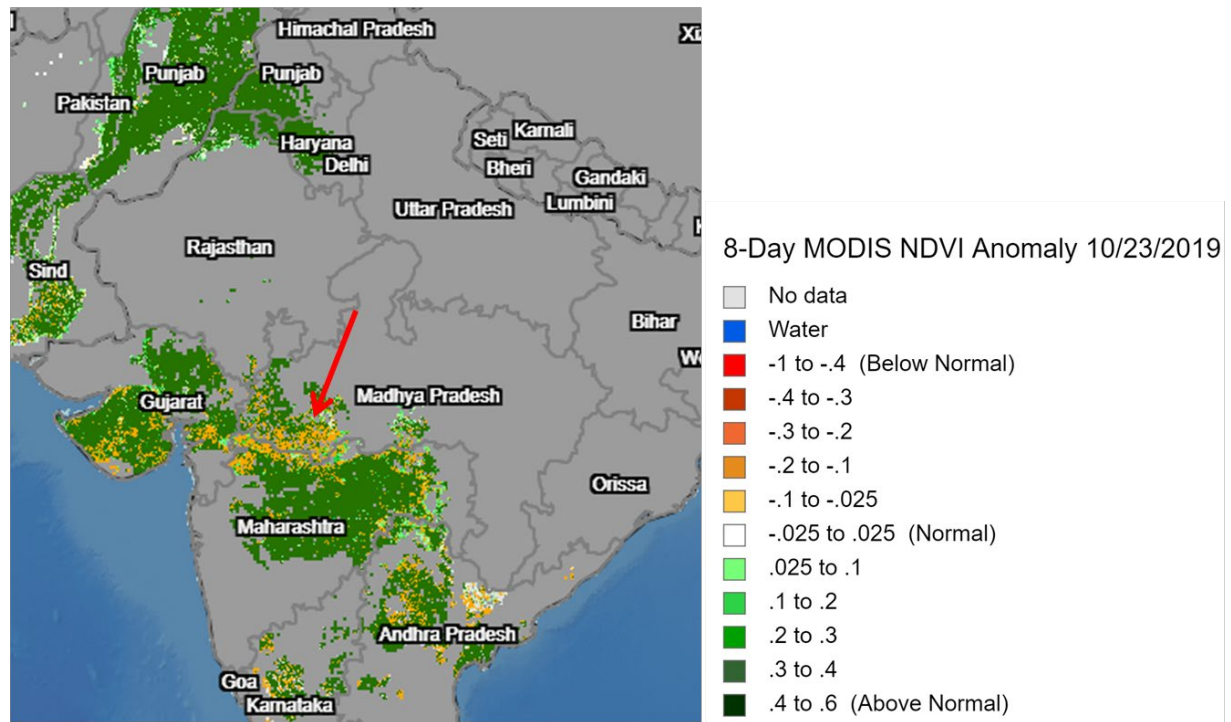


USDA estimates Turkmenistan 2019/20 cotton production at 1.0 million 480-pound bales, down 0.2 million bales from last month but up 0.1 million bales from last year. Area is estimated at 545,000 hectares, unchanged from last month and last year. Yield is estimated at 399 kilograms per hectare, down 13 percent from last month. Extremely hot and dry weather from mid-July until early-August was detrimental to the crop. Extended temperatures as high as 42 degrees Celsius occurred at peak flowering, breaking records across Turkmenistan and negatively impacting yields. Cotton harvest began in September and is essentially complete. *(For more information, please contact William.Baker@usda.gov.)*

India Cotton: Heavy Rains Negatively Impact Yields

USDA estimates India cotton production for 2019/20 at 30.0 million 480-pound bales, down nearly 2 percent from last month, but up 13 percent from the previous year. The year-to-year production increase is due to record area in the major cotton regions of Gujarat and Maharashtra, however, the month-to-month decrease is due to recent heavy rains. Harvested area is estimated at 13.0 million hectares, up slightly from the previous month and up 3 percent from 2018/19. Yield is estimated at 502 kilograms per hectare, down 3 percent from last month, but up nearly 10 percent from last year.

India Cotton: 8 –Day MODIS NDVI Anomaly



USDA Foreign Agricultural Service
Office of Global Analysis
International Production Assessment Division

Source: MODIS NDVI (non-cotton mask, SPAM
2010 Cotton Crop Mask)

Recent heavy rains reduced yields in the central cotton producing region. Although the Southwest Monsoon underperformed early in the season, it resumed and progressed to the major cotton areas in central India: Gujarat, Maharashtra and Madhya Pradesh in late July. Heavy rains continued in Madhya Pradesh through October. These heavy rains are causing high incidences of pests and disease. There are reports of boll rot and pests impacting the cotton crop in Madhya Pradesh. In addition, MODIS Normalized Difference Vegetation Index anomaly in late October showed crop vigor below normal in the Madhya Pradesh area. Cotton is grown exclusively in the *kharif* season from May to October, but harvest can continue into February. (For more information please contact Arnella.Trent@usda.gov.)



**World Agricultural Production
U.S. Department of Agriculture**

Foreign Agricultural Service / Office of Global Analysis
International Production Assessment Division (IPAD)
Ag Box 1051, Room 4630, South Building
Washington, DC 20250-1051

<https://ipad.fas.usda.gov/>

Telephone: (202) 720-1662 Fax: (202) 720-1158

This report uses information from the Foreign Agricultural Service’s (FAS) global network of agricultural attachés and counselors, official statistics of foreign governments and other foreign source materials, and the analysis of economic data and satellite imagery. Estimates of foreign area, yield, and production are from the International Production Assessment Division, FAS, and are reviewed by USDA’s Inter-Agency Commodity Estimates Committee. Estimates of U.S. area, yield, and production are from USDA’s National Agricultural Statistics Service. Numbers within the report may not add to totals because of rounding. This report reflects official USDA estimates released in the World Agricultural Supply and Demand Estimates (WASDE-584), November 8, 2019.

Printed copies are available from the National Technical Information Service. Download an order form at http://www.ntis.gov/products/specialty/usda/fas_a-g.asp, or call NTIS at 1-800-363-2068.

The FAS International Production Assessment Division prepared this report. The next issue of World Agricultural Production will be released after 12:00 p.m. Eastern Time December 10, 2019.

Conversion Table

Metric tons to bushels

Wheat, soybeans	=	MT * 36.7437
Corn, sorghum, rye	=	MT * 39.36825
Barley	=	MT * 45.929625
Oats	=	MT * 68.894438

Metric tons to 480-lb bales

Cotton	=	MT * 4.592917
--------	---	---------------

Metric tons to hundredweight

Rice	=	MT * 22.04622
------	---	---------------

Area & weight

1 hectare	=	2.471044 acres
1 kilogram	=	2.204622 pounds



For further information, contact:
U.S. Department of Agriculture
Foreign Agricultural Service
Office of Global Analysis
International Production Assessment Division
Ag Box 1051, Room 4630, South Building
Washington, DC 20250-1051

Telephone: (202) 720-1662 Fax: (202) 720-1158

GENERAL INFORMATION

Director	Ronald Frantz	202-720-4056	ronald.frantz@usda.gov
Deputy Director	Robert Tetrault	202-720-1071	robert.tetrault@usda.gov
Administrative Assistant	Diondra Williams	202-720-1662	diondra.williams@usda.gov
USDA Remote Sensing Advisor	Glenn Bethel	202-720-1280	glenn.bethel@usda.gov
Sr. Analyst/Technical Lead	Curt Reynolds, Ph.D.	202-690-0134	curt.reynolds@usda.gov
Sr. Analyst/ Satellite Imagery	Dath Mita, Ph.D.	202-720-7339	dath.mita@usda.gov
Archives Manager/Technical Lead			
Sr. Analyst/ Global Special	Jim Crutchfield	202-690-0135	james.crutchfield@usda.gov
Projects Manager/Technical Lead			
Sr. Analyst/Technical Lead	Vacant		
GIS Mapping/Imagery Specialist	Lisa Colson	202-720-6652	lisa.colson@usda.gov
WAP Coordinator	Ifeoma Collins	202-720-0240	ifeoma.collins@usda.gov

COUNTRY- AND REGION-SPECIFIC INFORMATION

South America, Argentina, Venezuela, and Colombia	Denise McWilliams, Ph.D.	202-720-0107	denise.mcwilliams@usda.gov
Europe and North Africa	Bryan Purcell	202-690-0138	bryan.purcell@usda.gov
Russia, Ukraine, Kazakhstan	Katie McGaughey	202-720-9210	katie.mcgaughey@usda.gov
South Asia, Sri Lanka	Arnella Trent	202-720-0881	arnella.trent@usda.gov
Bangladesh, India, and Nepal			
East Asia, China, and Japan	Dath Mita, Ph.D.	202-720-7339	dath.mita@usda.gov
Sub-Saharan Africa,	Curt Reynolds, Ph.D.	202-690-0134	curt.reynolds@usda.gov
Nigeria and South Africa			
S.E. Asia, Indonesia, Thailand, Malaysia, Cambodia and Vietnam	Justin Jenkins	202-720-0419	justin.jenkins@usda.gov
Central America, Mexico, and Western United States	Ifeoma Collins	202-720-0240	ifeoma.collins@usda.gov
Australia, New Zealand, Pakistan	Jim Crutchfield	202-690-0135	james.crutchfield@usda.gov
Papua New Guinea and South Pacific Islands			
Middle East, Central Asia, Afghanistan	Bill Baker, Ph.D.	202-260-8109	william.baker@usda.gov
Iraq, Iran, and Syria			
Canada, Caribbean,	Vacant		
Eastern United States			
Brazil	Vacant		



The Foreign Agricultural Service (FAS) updates its production, supply and distribution (PSD) database for cotton, oilseeds, and grains at 12:00 p.m. on the day the *World Agricultural Supply and Demand Estimates* (WASDE) report is released. This circular is released by 12:15 p.m.

FAS Reports and Databases:

Current *World Market and Trade and World Agricultural Production* Reports (Please see Data Publications):

<https://apps.fas.usda.gov/psdonline/app/index.html#/app/home>

Archives *World Market and Trade and World Agricultural Production* Reports:

https://usda.library.cornell.edu/catalog?utf8=%E2%9C%93&search_field=all_fields&q=world+agricultural+production

Production, Supply and Distribution Database (PSD Online):

<http://apps.fas.usda.gov/psdonline/psdHome.aspx>

EU Countries Area and Production (Please see Downloadable Data Sets):

<https://apps.fas.usda.gov/psdonline/app/index.html#/app/home>

Russia Wheat, Winter/Spring Area and Production (Please see Downloadable Data Sets):

<https://apps.fas.usda.gov/psdonline/app/index.html#/app/home>

Global Agricultural Trade System (U.S. Exports and Imports):

<http://apps.fas.usda.gov/gats/default.aspx>

Export Sales Report:

<http://apps.fas.usda.gov/esrquery/>

Global Agricultural Information Network (Agricultural Attaché Reports):

<http://gain.fas.usda.gov/Pages/Default.aspx>

Other USDA Reports:

World Agricultural Supply and Demand Estimates (WASDE):

<http://www.usda.gov/oce/commodity/wasde/>

Economic Research Service:

<http://www.ers.usda.gov/topics/crops>

National Agricultural Statistics Service:

<http://www.nass.usda.gov/Publications/>

Table 01 World Crop Production Summary

Million Metric Tons

Commodity	World	Total Foreign	North America			Former Soviet		European	Asia (WAP)					South America		Selected Other			All Others
			United States	Canada	Mexico	Russia	Ukraine		China	India	Indonesia	Pakistan	Thailand	Argentina	Brazil	Australia	South Africa	Turkey	
			-	-	-	-	-		-	-	-	-	-	-	-	-	-	-	
---Million metric tons---																			
Wheat																			
2017/18	762.3	714.9	47.4	30.4	3.5	85.2	27.0	nr	134.3	98.5	0.0	26.6	0.0	18.5	4.3	20.9	1.5	21.0	243.2
2018/19 prel.	731.3	680.0	51.3	32.2	3.0	71.7	25.1	nr	131.4	99.9	0.0	25.1	0.0	19.5	5.4	17.3	1.9	19.0	228.5
2019/20 proj.																			
Oct	765.2	711.8	53.4	33.0	3.3	72.5	28.7	nr	132.0	102.2	0.0	25.6	0.0	20.5	5.3	18.0	1.9	19.0	249.8
Nov	765.6	713.3	52.3	33.0	3.3	74.0	29.0	nr	132.0	102.2	0.0	25.6	0.0	20.0	5.3	17.2	1.7	19.0	251.0
Coarse Grains																			
2017/18	1,361.2	976.8	384.4	26.2	33.2	41.7	34.1	nr	265.7	46.9	11.9	6.2	5.1	39.3	85.1	12.2	13.6	12.3	343.4
2018/19 prel.	1,398.8	1,018.9	379.9	26.2	33.4	35.0	44.5	nr	265.4	43.0	12.0	6.6	5.7	59.2	104.3	10.9	12.3	13.3	347.1
2019/20 proj.																			
Oct	1,396.7	1,033.0	363.7	28.6	33.1	39.9	46.2	nr	262.5	46.0	12.7	6.6	5.3	57.7	104.2	11.5	14.6	14.3	350.0
Nov	1,394.9	1,034.1	360.8	28.6	30.6	40.4	46.0	nr	262.5	46.0	12.7	6.6	5.3	57.6	104.3	11.0	14.5	14.5	353.6
Rice, Milled																			
2017/18	494.9	489.2	5.7	0.0	0.2	0.6	0.0	nr	148.9	112.8	37.0	7.5	20.6	0.9	8.2	0.5	0.0	0.5	151.6
2018/19 prel.	499.3	492.2	7.1	0.0	0.2	0.7	0.0	nr	148.5	116.4	36.7	7.4	20.3	0.8	7.1	0.0	0.0	0.6	153.4
2019/20 proj.																			
Oct	497.8	491.8	6.0	0.0	0.2	0.7	0.0	nr	146.0	114.0	37.4	7.5	20.5	0.8	7.1	0.0	0.0	0.6	156.9
Nov	497.8	491.8	6.0	0.0	0.2	0.7	0.0	nr	146.0	115.0	36.5	7.5	20.5	0.8	7.1	0.0	0.0	0.6	156.8
Total Grains																			
2017/18	2,618.4	2,181.0	437.4	56.6	36.9	127.5	61.1	nr	548.9	258.2	48.9	40.3	25.6	58.7	97.5	33.6	15.1	33.8	738.2
2018/19 prel.	2,629.4	2,191.1	438.4	58.4	36.6	107.4	69.6	nr	545.3	259.3	48.7	39.1	26.0	79.5	116.9	28.3	14.2	32.9	729.0
2019/20 proj.																			
Oct	2,659.7	2,236.6	423.0	61.6	36.6	113.1	74.9	nr	540.5	262.1	50.1	39.7	25.8	79.0	116.7	29.5	16.5	33.9	756.7
Nov	2,658.2	2,239.1	419.0	61.6	34.1	115.1	75.1	nr	540.5	263.1	49.2	39.7	25.8	78.4	116.8	28.2	16.2	34.1	761.3
Oilseeds																			
2017/18	580.8	449.3	131.5	29.1	1.3	15.5	19.8	nr	59.6	35.4	13.8	4.0	1.0	42.5	125.8	5.4	2.6	3.2	90.4
2018/19 prel.	596.7	466.0	130.7	27.7	1.3	18.7	22.3	nr	59.9	35.8	14.1	3.8	1.0	61.0	121.8	2.9	2.0	3.5	90.3
2019/20 proj.																			
Oct	574.8	466.9	107.9	26.1	1.1	19.4	21.2	nr	61.8	37.8	14.4	3.8	1.1	58.3	127.6	2.6	2.4	3.4	86.0
Nov	571.3	463.6	107.7	25.6	1.1	19.4	21.5	nr	61.6	35.6	14.4	3.5	1.1	58.2	127.6	2.5	2.4	3.3	85.8
Cotton																			
2017/18	123.8	102.9	20.9	0.0	1.6	0.0	0.0	1.5	27.5	29.0	0.0	8.2	0.0	0.8	9.2	4.8	0.2	4.0	16.1
2018/19 prel.	118.8	100.4	18.4	0.0	1.7	0.0	0.0	1.7	27.8	26.5	0.0	7.6	0.0	1.1	12.5	2.2	0.2	3.7	15.4
2019/20 proj.																			
Oct	124.8	103.1	21.7	0.0	1.6	0.0	0.0	1.8	27.8	30.5	0.0	7.6	0.0	1.0	11.6	1.2	0.2	4.1	15.8
Nov	121.9	101.1	20.8	0.0	1.6	0.0	0.0	1.9	27.3	30.0	0.0	7.0	0.0	1.0	11.6	1.2	0.2	3.8	15.6

1/ Includes wheat, coarse grains, and rice (milled) shown above.

Table 02 Wheat Area, Yield, and Production

Country / Region	Area (Million hectares)				Yield (Metric tons per hectare)				Production (Million metric tons)				Change in Production			
	2017/18	Prel.	2019/20 Proj.		2017/18	Prel.	2019/20 Proj.		2017/18	Prel.	2019/20 Proj.		From last month		From last year	
		2018/19	Oct	Nov		2018/19	Oct	Nov		2018/19	Oct	Nov	MMT	Percent	MMT	Percent
World	218.28	215.47	218.15	218.04	3.49	3.39	3.51	3.51	762.31	731.28	765.23	765.55	0.32	0.04	34.27	4.69
United States	15.20	16.03	15.40	15.04	3.12	3.20	3.47	3.47	47.38	51.31	53.39	52.26	-1.13	-2.12	0.95	1.86
Total Foreign	203.09	199.44	202.75	203.00	3.52	3.41	3.51	3.51	714.93	679.98	711.84	713.29	1.46	0.20	33.32	4.90
European Union - 28	26.16	25.58	26.06	26.08	5.78	5.35	5.83	5.87	151.13	136.86	152.00	153.00	1.00	0.66	16.14	11.79
China	24.51	24.27	24.10	24.10	5.48	5.42	5.48	5.48	134.33	131.43	132.00	132.00	0.00	0.00	0.57	0.43
South Asia																
India	30.79	29.65	29.85	29.85	3.20	3.37	3.42	3.42	98.51	99.87	102.19	102.19	0.00	0.00	2.32	2.32
Pakistan	9.05	8.80	8.80	8.80	2.94	2.85	2.91	2.91	26.60	25.10	25.60	25.60	0.00	0.00	0.50	1.99
Afghanistan	2.10	2.00	2.30	2.30	2.00	1.80	2.17	2.17	4.20	3.60	5.00	5.00	0.00	0.00	1.40	38.89
Nepal	0.77	0.76	0.76	0.76	2.31	2.35	2.35	2.35	1.78	1.79	1.79	1.79	0.00	0.00	0.00	0.00
Former Soviet Union - 12																
Russia	27.37	26.34	27.00	27.20	3.11	2.72	2.69	2.72	85.17	71.69	72.50	74.00	1.50	2.07	2.32	3.23
Russia Winter	14.67	14.91	15.20	15.30	4.17	3.52	3.55	3.59	61.15	52.47	54.00	55.00	1.00	1.85	2.53	4.82
Russia Spring	12.71	11.44	11.80	11.90	1.89	1.68	1.57	1.60	24.01	19.22	18.50	19.00	0.50	2.70	-0.22	-1.12
Ukraine	6.64	6.72	7.05	7.05	4.06	3.73	4.07	4.11	26.98	25.06	28.70	29.00	0.30	1.05	3.94	15.74
Kazakhstan	11.91	11.35	11.25	11.25	1.24	1.23	1.02	1.02	14.80	13.95	11.50	11.50	0.00	0.00	-2.45	-17.54
Uzbekistan	1.44	1.40	1.40	1.40	4.79	4.29	4.86	4.86	6.90	6.00	6.80	6.80	0.00	0.00	0.80	13.33
Belarus	0.72	0.66	0.75	0.75	3.65	2.75	3.83	3.83	2.62	1.82	2.88	2.88	0.00	0.00	1.06	58.40
Canada	8.98	9.88	9.70	9.70	3.38	3.26	3.40	3.40	30.38	32.20	33.00	33.00	0.00	0.00	0.80	2.48
South America																
Argentina	5.80	6.05	6.30	6.30	3.19	3.22	3.25	3.17	18.50	19.50	20.50	20.00	-0.50	-2.44	0.50	2.56
Brazil	1.92	2.04	2.05	2.05	2.23	2.66	2.59	2.59	4.26	5.43	5.30	5.30	0.00	0.00	-0.13	-2.36
Uruguay	0.19	0.20	0.23	0.23	2.28	3.68	3.30	3.30	0.44	0.73	0.76	0.76	0.00	0.00	0.03	4.40
Australia	10.92	10.16	10.70	10.60	1.92	1.70	1.68	1.62	20.94	17.30	18.00	17.20	-0.80	-4.44	-0.10	-0.57
Africa																
Egypt	1.32	1.32	1.37	1.37	6.40	6.40	6.40	6.40	8.45	8.45	8.77	8.77	0.00	0.00	0.32	3.79
Morocco	3.32	2.85	2.75	2.75	2.14	2.58	1.60	1.60	7.09	7.34	4.40	4.40	0.00	0.00	-2.94	-40.05
Ethiopia	1.72	1.84	1.70	1.85	2.81	2.61	2.71	2.59	4.83	4.80	4.60	4.80	0.20	4.35	0.00	0.00
Algeria	1.60	2.07	2.10	2.10	1.50	1.90	1.90	1.90	2.40	3.94	4.00	4.00	0.00	0.00	0.06	1.52
Middle East																
Turkey	7.80	7.62	7.20	7.20	2.69	2.50	2.64	2.64	21.00	19.00	19.00	19.00	0.00	0.00	0.00	0.00
Iran	6.70	6.70	6.70	6.70	2.09	2.16	2.51	2.51	14.00	14.50	16.80	16.80	0.00	0.00	2.30	15.86
Iraq	2.20	1.70	2.40	2.40	1.82	1.76	2.00	2.00	4.00	3.00	4.80	4.80	0.00	0.00	1.80	60.00
Syria	1.10	1.10	1.60	1.60	2.00	1.82	3.00	3.00	2.20	2.00	4.80	4.80	0.00	0.00	2.80	140.00
Mexico	0.67	0.54	0.61	0.61	5.24	5.56	5.41	5.41	3.49	3.00	3.30	3.30	0.00	0.00	0.30	10.00
Serbia	0.54	0.65	0.58	0.58	4.26	4.63	4.48	4.48	2.30	3.00	2.60	2.60	0.00	0.00	-0.40	-13.33
Others	6.86	7.18	7.44	7.42	2.57	2.59	2.72	2.70	17.62	18.64	20.26	20.01	-0.24	-1.20	1.37	7.37

Table 03 Total Coarse Grain Area, Yield, and Production

Country / Region	Area (Million hectares)				Yield (Metric tons per hectare)				Production (Million metric tons)				Change in Production			
	Prel.		2019/20 Proj.		Prel.		2019/20 Proj.		Prel.		2019/20 Proj.		From last month		From last year	
	2017/18	2018/19	Oct	Nov	2017/18	2018/19	Oct	Nov	2017/18	2018/19	Oct	Nov	MMT	Percent	MMT	Percent
World	327.73	328.06	331.98	331.90	4.15	4.26	4.21	4.20	1,361.22	1,398.80	1,396.68	1,394.89	-1.80	-0.13	-3.92	-0.28
United States	36.76	36.39	36.38	36.36	10.46	10.44	10.00	9.92	384.39	379.93	363.65	360.82	-2.83	-0.78	-19.11	-5.03
Total Foreign	290.96	291.67	295.60	295.54	3.36	3.49	3.49	3.50	976.83	1,018.87	1,033.03	1,034.06	1.03	0.10	15.19	1.49
China	44.57	44.67	43.65	43.65	5.96	5.94	6.01	6.01	265.72	265.41	262.48	262.48	0.00	0.00	-2.93	-1.10
European Union	28.97	29.22	29.81	29.80	5.25	5.06	5.33	5.32	152.12	147.91	158.75	158.55	-0.20	-0.13	10.64	7.19
South America																
Brazil	17.83	18.72	19.33	19.33	4.77	5.57	5.39	5.40	85.06	104.33	104.23	104.35	0.12	0.11	0.02	0.01
Argentina	7.10	8.22	8.05	8.05	5.54	7.20	7.17	7.16	39.32	59.23	57.73	57.63	-0.10	-0.17	-1.60	-2.70
Former Soviet Union - 12																
Russia	14.59	14.03	14.28	14.43	2.86	2.50	2.79	2.80	41.72	35.00	39.88	40.38	0.50	1.25	5.38	15.36
Ukraine	7.59	7.58	8.01	8.01	4.49	5.87	5.77	5.75	34.07	44.50	46.20	46.04	-0.16	-0.35	1.54	3.45
Kazakhstan	2.49	2.97	3.41	3.41	1.79	1.76	1.52	1.52	4.45	5.23	5.19	5.19	0.00	0.00	-0.04	-0.80
Belarus	1.00	0.97	0.85	0.85	3.30	2.56	3.59	3.59	3.29	2.49	3.05	3.05	0.00	0.00	0.56	22.54
Africa																
Nigeria	14.57	14.30	14.40	14.40	1.29	1.39	1.38	1.38	18.86	19.92	19.90	19.90	0.00	0.00	-0.02	-0.10
South Africa	2.79	2.81	3.12	3.12	4.86	4.39	4.69	4.65	13.55	12.34	14.60	14.53	-0.07	-0.48	2.19	17.70
Tanzania	5.32	5.35	5.35	5.35	1.47	1.36	1.24	1.37	7.83	7.26	6.65	7.35	0.70	10.53	0.09	1.23
Burkina	3.85	3.85	3.85	3.85	0.97	1.25	1.14	1.17	3.73	4.82	4.40	4.50	0.10	2.27	-0.32	-6.62
Ethiopia	5.55	5.65	5.60	5.65	3.01	2.96	2.91	3.01	16.68	16.70	16.30	17.00	0.70	4.29	0.30	1.80
Egypt	1.02	1.07	1.02	1.02	7.09	7.14	7.09	7.09	7.26	7.66	7.26	7.26	0.00	0.00	-0.40	-5.22
Mali	4.78	4.50	4.50	4.50	1.36	1.54	1.18	1.28	6.51	6.94	5.30	5.75	0.45	8.49	-1.19	-17.09
India	24.28	22.22	23.66	23.66	1.93	1.93	1.94	1.94	46.94	42.97	45.95	45.95	0.00	0.00	2.98	6.93
Southeast Asia																
Indonesia	3.65	3.70	3.90	3.90	3.26	3.24	3.26	3.26	11.90	12.00	12.70	12.70	0.00	0.00	0.70	5.83
Philippines	2.60	2.48	2.55	2.55	3.10	3.07	3.18	3.18	8.08	7.61	8.10	8.10	0.00	0.00	0.49	6.47
Vietnam	1.04	0.95	1.00	1.00	4.72	4.80	4.85	4.85	4.91	4.56	4.85	4.85	0.00	0.00	0.29	6.36
Thailand	1.15	1.33	1.22	1.22	4.38	4.26	4.31	4.31	5.05	5.65	5.25	5.25	0.00	0.00	-0.40	-7.08
Mexico	9.07	8.95	9.21	8.56	3.66	3.73	3.59	3.57	33.19	33.40	33.10	30.60	-2.50	-7.55	-2.80	-8.38
Canada	4.74	5.00	5.52	5.52	5.54	5.24	5.17	5.17	26.24	26.19	28.56	28.56	0.00	0.00	2.37	9.03
Australia	5.59	5.03	5.44	5.29	2.18	2.17	2.11	2.08	12.19	10.93	11.50	11.00	-0.50	-4.35	0.06	0.57
Middle East																
Turkey	4.15	4.34	4.53	4.53	2.96	3.05	3.16	3.19	12.27	13.25	14.30	14.45	0.15	1.05	1.20	9.06
Iran	1.78	1.73	1.91	1.91	2.43	2.32	2.63	2.63	4.34	4.02	5.02	5.02	0.00	0.00	1.00	24.88
Others	70.89	72.03	71.45	71.99	1.57	1.65	1.56	1.58	111.55	118.55	111.79	113.64	1.85	1.65	-4.91	-4.14

World and Selected Countries and Regions; Coarse Grain includes: Barley, Corn, Millet, Mixed Grains, Oats, Rye and Sorghum

Table 04 Corn Area, Yield, and Production

Country / Region	Area (Million hectares)				Yield (Metric tons per hectare)				Production (Million metric tons)				Change in Production			
	2017/18	Prel.	2019/20 Proj.		2017/18	Prel.	2019/20 Proj.		2017/18	Prel.	2019/20 Proj.		From last month		From last year	
		2018/19	2018/19	Oct		Nov	2018/19	2018/19		Oct	Nov	2018/19	2018/19	Oct	Nov	MMT
World	192.13	191.91	191.77	191.63	5.62	5.86	5.76	5.75	1,080.02	1,125.01	1,104.01	1,102.16	-1.85	-0.17	-22.85	-2.03
United States	33.48	33.08	33.11	33.11	11.08	11.07	10.57	10.48	371.10	366.29	350.01	347.01	-3.01	-0.86	-19.28	-5.26
Total Foreign	158.65	158.83	158.66	158.52	4.47	4.78	4.75	4.76	708.92	758.73	754.00	755.16	1.16	0.15	-3.57	-0.47
China	42.40	42.13	41.00	41.00	6.11	6.11	6.20	6.20	259.07	257.33	254.00	254.00	0.00	0.00	-3.33	-1.29
South America																
Brazil	16.60	17.50	18.10	18.10	4.94	5.77	5.58	5.58	82.00	101.00	101.00	101.00	0.00	0.00	0.00	0.00
Argentina	5.20	6.10	6.10	6.10	6.15	8.36	8.20	8.20	32.00	51.00	50.00	50.00	0.00	0.00	-1.00	-1.96
Bolivia	0.37	0.33	0.25	0.25	2.50	2.65	2.50	2.50	0.93	0.88	0.63	0.63	0.00	0.00	-0.25	-28.57
European Union	8.26	8.27	8.61	8.59	7.51	7.77	7.53	7.51	62.02	64.22	64.80	64.56	-0.24	-0.37	0.34	0.53
Africa																
South Africa	2.63	2.60	2.90	2.90	4.97	4.52	4.83	4.83	13.10	11.75	14.00	14.00	0.00	0.00	2.25	19.15
Nigeria	6.54	6.50	6.50	6.50	1.59	1.69	1.69	1.69	10.42	11.00	11.00	11.00	0.00	0.00	0.00	0.00
Ethiopia	2.23	2.30	2.30	2.30	3.77	3.63	3.48	3.65	8.40	8.35	8.00	8.40	0.40	5.00	0.05	0.60
Egypt	0.80	0.85	0.80	0.80	8.00	8.00	8.00	8.00	6.40	6.80	6.40	6.40	0.00	0.00	-0.40	-5.88
Tanzania	4.20	4.20	4.20	4.20	1.59	1.49	1.31	1.48	6.68	6.27	5.50	6.20	0.70	12.73	-0.07	-1.16
Malawi	1.73	1.70	1.70	1.70	2.01	1.64	1.94	2.00	3.46	2.79	3.30	3.40	0.10	3.03	0.61	21.78
Zambia	1.43	1.09	0.84	0.84	2.52	2.21	2.38	2.38	3.61	2.40	2.00	2.00	0.00	0.20	-0.39	-16.33
Kenya	2.09	2.20	2.00	2.00	1.52	1.82	1.60	1.70	3.19	4.00	3.20	3.40	0.20	6.25	-0.60	-15.00
Uganda	1.19	1.19	1.20	1.15	2.54	2.37	2.50	2.43	3.02	2.83	3.00	2.80	-0.20	-6.67	-0.03	-0.88
Zimbabwe	1.88	1.72	1.62	1.62	1.15	0.99	0.48	0.48	2.16	1.70	0.78	0.78	0.00	0.00	-0.92	-54.32
Former Soviet Union - 12																
Ukraine	4.43	4.57	4.90	4.90	5.44	7.84	7.35	7.24	24.12	35.81	36.00	35.50	-0.50	-1.39	-0.31	-0.85
Russia	2.69	2.37	2.45	2.45	4.90	4.81	5.51	5.71	13.20	11.42	13.50	14.00	0.50	3.70	2.59	22.65
South Asia																
India	9.38	9.20	9.50	9.50	3.07	2.96	3.05	3.05	28.75	27.23	29.00	29.00	0.00	0.00	1.77	6.50
Pakistan	1.23	1.32	1.33	1.33	4.63	4.62	4.59	4.59	5.70	6.10	6.10	6.10	0.00	0.00	0.00	0.00
Nepal	0.90	0.90	0.90	0.90	2.84	2.83	2.83	2.83	2.56	2.55	2.55	2.55	0.00	0.00	0.00	0.00
Southeast Asia																
Indonesia	3.65	3.70	3.90	3.90	3.26	3.24	3.26	3.26	11.90	12.00	12.70	12.70	0.00	0.00	0.70	5.83
Philippines	2.60	2.48	2.55	2.55	3.10	3.07	3.18	3.18	8.08	7.61	8.10	8.10	0.00	0.00	0.49	6.47
Vietnam	1.04	0.95	1.00	1.00	4.72	4.80	4.85	4.85	4.91	4.56	4.85	4.85	0.00	0.00	0.29	6.36
Thailand	1.13	1.30	1.19	1.19	4.44	4.31	4.37	4.37	5.00	5.60	5.20	5.20	0.00	0.00	-0.40	-7.14
Mexico	7.32	7.20	7.30	6.80	3.77	3.83	3.70	3.68	27.57	27.60	27.00	25.00	-2.00	-7.41	-2.60	-9.42
Canada	1.41	1.43	1.40	1.40	10.02	9.70	10.00	10.00	14.10	13.89	14.00	14.00	0.00	0.00	0.12	0.83
Turkey	0.53	0.53	0.52	0.52	10.00	10.75	11.06	11.54	5.30	5.70	5.75	6.00	0.25	4.35	0.30	5.26
Others	24.79	24.21	23.60	24.02	2.47	2.74	2.61	2.65	61.29	66.36	61.65	63.59	1.94	3.15	-2.77	-4.18

World and Selected Countries and Regions

Table 05 Barley Area, Yield, and Production

Country / Region	Area (Million hectares)				Yield (Metric tons per hectare)				Production (Million metric tons)				Change in Production						
	2017/18	Prel.		2019/20 Proj.		2017/18	Prel.		2019/20 Proj.		2017/18	Prel.		2019/20 Proj.		From last month		From last year	
		2018/19	Oct	Nov	2018/19		Oct	Nov	2018/19	Oct		Nov	MMT	Percent	MMT	Percent			
World	47.37	48.25	51.85	51.98	3.02	2.89	3.00	3.00	143.13	139.59	155.80	155.84	0.04	0.02	16.25	11.64			
United States	0.79	0.80	0.90	0.88	3.93	4.17	4.16	4.18	3.12	3.34	3.73	3.69	-0.04	-1.05	0.35	10.44			
Total Foreign	46.58	47.45	50.96	51.10	3.01	2.87	2.98	2.98	140.01	136.24	152.07	152.14	0.08	0.05	15.90	11.67			
European Union	12.10	12.31	12.38	12.41	4.85	4.54	4.98	4.98	58.65	55.90	61.64	61.80	0.16	0.25	5.90	10.56			
Former Soviet Union - 12																			
Russia	7.71	7.78	8.25	8.40	2.62	2.15	2.42	2.38	20.21	16.74	20.00	20.00	0.00	0.00	3.26	19.50			
Ukraine	2.65	2.57	2.70	2.70	3.28	2.96	3.41	3.52	8.70	7.60	9.20	9.50	0.30	3.26	1.90	24.93			
Kazakhstan	2.07	2.52	2.95	2.95	1.60	1.58	1.32	1.32	3.31	3.97	3.90	3.90	0.00	0.00	-0.07	-1.79			
Belarus	0.45	0.43	0.40	0.40	3.14	2.20	3.50	3.50	1.42	0.94	1.40	1.40	0.00	0.00	0.46	48.31			
Azerbaijan	0.32	0.32	0.32	0.32	2.55	2.72	2.72	2.72	0.82	0.87	0.87	0.87	0.00	0.00	0.00	0.00			
Canada	2.11	2.40	2.70	2.70	3.73	3.50	3.67	3.67	7.89	8.38	9.90	9.90	0.00	0.00	1.52	18.14			
Australia	4.12	3.72	4.10	4.05	2.24	2.23	2.10	2.07	9.25	8.31	8.60	8.40	-0.20	-2.33	0.09	1.08			
Middle East																			
Turkey	3.40	3.60	3.80	3.80	1.88	1.94	2.11	2.08	6.40	7.00	8.00	7.90	-0.10	-1.25	0.90	12.86			
Iran	1.60	1.55	1.70	1.70	1.94	1.81	2.12	2.12	3.10	2.80	3.60	3.60	0.00	0.00	0.80	28.57			
Iraq	0.78	0.60	1.20	1.20	1.26	1.30	1.33	1.33	0.98	0.78	1.60	1.60	0.00	0.00	0.82	105.13			
Syria	0.80	0.80	1.50	1.50	0.97	0.50	1.33	1.33	0.78	0.40	2.00	2.00	0.00	0.00	1.60	400.00			
Africa																			
Ethiopia	0.96	1.00	1.00	1.00	2.13	2.20	2.30	2.30	2.03	2.20	2.30	2.30	0.00	0.00	0.10	4.55			
Morocco	1.89	1.60	1.45	1.45	1.30	1.82	0.69	0.69	2.47	2.91	1.00	1.00	0.00	0.00	-1.91	-65.64			
Algeria	0.76	1.03	1.03	1.03	1.27	1.90	2.00	2.00	0.97	1.95	2.05	2.05	0.00	0.00	0.10	5.13			
Tunisia	0.39	0.31	0.40	0.40	1.02	0.99	1.63	1.63	0.40	0.31	0.65	0.65	0.00	0.00	0.34	109.68			
South Africa	0.09	0.12	0.12	0.13	3.37	3.55	3.54	2.77	0.31	0.42	0.43	0.37	-0.06	-14.12	-0.06	-13.51			
South America																			
Argentina	0.94	1.20	1.20	1.20	4.00	4.22	4.00	3.92	3.74	5.06	4.80	4.70	-0.10	-2.08	-0.36	-7.11			
Uruguay	0.15	0.15	0.17	0.17	2.52	3.83	3.82	3.82	0.39	0.58	0.63	0.63	0.00	0.00	0.06	9.57			
Brazil	0.11	0.11	0.12	0.12	2.61	3.16	3.02	3.56	0.28	0.35	0.35	0.42	0.07	19.14	0.06	17.80			
India	0.66	0.66	0.66	0.66	2.66	2.69	2.64	2.64	1.75	1.78	1.75	1.75	0.00	0.00	-0.03	-1.74			
China	0.33	0.45	0.47	0.47	3.29	4.11	4.15	4.15	1.09	1.85	1.95	1.95	0.00	0.00	0.10	5.41			
Mexico	0.36	0.35	0.36	0.36	2.81	2.82	2.81	2.81	1.01	1.00	1.01	1.01	0.00	0.00	0.01	1.41			
Afghanistan	0.07	0.06	0.18	0.18	1.40	0.95	1.39	1.39	0.10	0.06	0.25	0.25	0.00	0.00	0.19	338.60			
Others	1.76	1.82	1.81	1.81	2.27	2.25	2.32	2.33	4.00	4.09	4.19	4.20	0.01	0.29	0.12	2.84			

World and Selected Countries and Regions

Table 06 Oats Area, Yield, and Production

Country / Region	Area (Million hectares)				Yield (Metric tons per hectare)				Production (Million metric tons)				Change in Production			
	2017/18	Prel.	2019/20 Proj.		2017/18	Prel.	2019/20 Proj.		2017/18	Prel.	2019/20 Proj.		From last month		From last year	
		2018/19	Oct	Nov		2018/19	Oct	Nov		2018/19	Oct	Nov	MMT	Percent	MMT	Percent
World	9.87	9.72	9.38	9.33	2.40	2.26	2.41	2.40	23.70	21.92	22.62	22.43	-0.19	-0.84	0.51	2.32
United States	0.33	0.35	0.34	0.33	2.22	2.33	2.31	2.31	0.72	0.82	0.79	0.77	-0.02	-2.03	-0.04	-5.40
Total Foreign	9.54	9.37	9.04	9.00	2.41	2.25	2.42	2.41	22.98	21.10	21.83	21.66	-0.18	-0.80	0.55	2.62
European Union	2.67	2.71	2.60	2.55	3.02	2.84	3.12	3.10	8.06	7.72	8.10	7.92	-0.18	-2.16	0.21	2.66
Former Soviet Union - 12																
Russia	2.78	2.73	2.40	2.40	1.96	1.73	1.79	1.79	5.45	4.72	4.30	4.30	0.00	0.00	-0.42	-8.80
Ukraine	0.21	0.20	0.18	0.18	2.31	2.14	2.39	2.39	0.48	0.42	0.43	0.43	0.00	0.00	0.01	1.65
Belarus	0.15	0.15	0.15	0.15	3.33	2.26	3.00	3.00	0.50	0.34	0.45	0.45	0.00	0.00	0.11	31.58
Kazakhstan	0.21	0.24	0.24	0.24	1.34	1.43	1.45	1.45	0.29	0.34	0.34	0.34	0.00	0.00	0.00	1.19
Canada	1.05	1.01	1.20	1.20	3.55	3.42	3.33	3.33	3.73	3.44	4.00	4.00	0.00	0.00	0.56	16.41
South America																
Argentina	0.22	0.24	0.14	0.14	2.24	2.40	2.59	2.59	0.49	0.57	0.35	0.35	0.00	0.00	-0.22	-38.81
Brazil	0.34	0.38	0.38	0.38	1.86	2.11	2.17	2.17	0.63	0.80	0.83	0.83	0.00	0.00	0.03	3.77
Chile	0.11	0.08	0.07	0.07	5.31	5.13	5.50	5.50	0.57	0.39	0.39	0.39	0.00	0.00	0.00	0.00
Uruguay	0.03	0.03	0.01	0.01	1.52	2.04	1.86	1.86	0.04	0.05	0.03	0.03	0.00	0.00	-0.03	-50.94
Oceania																
Australia	0.87	0.68	0.70	0.70	1.40	1.31	1.43	1.43	1.23	0.89	1.00	1.00	0.00	0.00	0.11	12.61
New Zealand	0.01	0.01	0.01	0.01	5.83	5.00	5.50	5.50	0.04	0.03	0.03	0.03	0.00	0.00	0.01	32.00
China	0.48	0.50	0.53	0.53	1.16	1.15	1.19	1.19	0.55	0.58	0.63	0.63	0.00	0.00	0.05	8.70
Africa																
Algeria	0.09	0.09	0.09	0.09	1.29	1.29	1.29	1.29	0.11	0.11	0.11	0.11	0.00	0.00	0.00	0.00
Morocco	0.03	0.05	0.05	0.05	1.17	1.40	0.89	0.89	0.04	0.06	0.04	0.04	0.00	0.00	-0.02	-36.51
South Africa	0.02	0.02	0.03	0.03	1.53	1.65	1.60	1.60	0.02	0.03	0.04	0.04	0.00	0.00	0.01	21.21
Other Europe																
Norway	0.07	0.07	0.07	0.07	4.16	2.09	4.29	4.29	0.28	0.14	0.30	0.30	0.00	0.00	0.16	108.33
Serbia	0.03	0.03	0.03	0.03	2.17	2.17	2.17	2.17	0.07	0.07	0.07	0.07	0.00	0.00	0.00	0.00
Albania	0.02	0.01	0.01	0.01	2.27	2.08	2.14	2.14	0.03	0.03	0.03	0.03	0.00	0.00	0.00	11.11
Bosnia and Herzegovina	0.01	0.01	0.01	0.01	2.73	2.79	3.00	3.00	0.03	0.04	0.04	0.04	0.00	0.00	0.00	7.69
Turkey	0.11	0.10	0.10	0.10	2.21	2.30	2.30	2.30	0.25	0.23	0.23	0.23	0.00	0.00	0.00	0.00
Mexico	0.04	0.05	0.05	0.05	1.64	2.06	1.80	1.80	0.07	0.10	0.09	0.09	0.00	0.00	-0.01	-12.62
Others	0.01	0.02	0.01	0.01	1.79	2.00	1.86	1.86	0.03	0.03	0.03	0.03	0.00	0.00	0.00	-13.33

World and Selected Countries and Regions

Table 07 Rye Area, Yield, and Production

Country / Region	Area (Million hectares)				Yield (Metric tons per hectare)				Production (Million metric tons)				Change in Production			
	2017/18	Prel.	2019/20 Proj.		2017/18	Prel.	2019/20 Proj.		2017/18	Prel.	2019/20 Proj.		From last month		From last year	
		2018/19	Oct	Nov		2018/19	Oct	Nov		2018/19	Oct	Nov	MMT	Percent	MMT	Percent
World	4.02	3.74	3.72	3.72	3.06	2.68	3.17	3.17	12.31	10.00	11.78	11.77	-0.01	-0.08	1.77	17.75
United States	0.12	0.11	0.13	0.13	2.15	1.95	2.16	2.16	0.26	0.21	0.27	0.27	0.00	0.00	0.06	26.17
Total Foreign	3.90	3.63	3.60	3.59	3.09	2.70	3.20	3.20	12.05	9.78	11.51	11.50	-0.01	-0.09	1.72	17.56
European Union	1.93	1.92	2.07	2.07	3.83	3.23	3.86	3.84	7.41	6.21	8.00	7.95	-0.05	-0.63	1.75	28.12
Former Soviet Union - 12																
Russia	1.17	0.96	0.83	0.83	2.17	2.00	1.94	1.94	2.54	1.91	1.60	1.60	0.00	0.00	-0.31	-16.41
Belarus	0.26	0.25	0.20	0.20	2.62	2.00	3.25	3.25	0.67	0.50	0.65	0.65	0.00	0.00	0.15	29.22
Ukraine	0.17	0.15	0.11	0.11	2.97	2.66	2.73	3.09	0.51	0.40	0.30	0.34	0.04	13.33	-0.06	-14.14
Kazakhstan	0.03	0.02	0.02	0.02	1.26	1.05	1.25	1.25	0.04	0.02	0.03	0.03	0.00	0.00	0.00	8.70
Turkey	0.10	0.11	0.11	0.11	3.17	2.91	2.91	2.91	0.32	0.32	0.32	0.32	0.00	0.00	0.00	0.00
Canada	0.10	0.08	0.13	0.13	3.39	2.99	3.08	3.08	0.34	0.24	0.40	0.40	0.00	0.00	0.16	69.49
South America																
Chile	0.00	0.00	0.00	0.00	5.00	5.00	5.00	5.00	0.01	0.01	0.01	0.01	0.00	0.00	0.00	0.00
Argentina	0.05	0.05	0.04	0.04	1.91	1.78	2.14	2.14	0.09	0.09	0.08	0.08	0.00	0.00	-0.01	-13.79
Other Europe																
Bosnia and Herzegovina	0.00	0.00	0.00	0.00	3.67	2.75	3.50	3.50	0.01	0.01	0.01	0.01	0.00	0.00	0.00	27.27
Switzerland	0.00	0.00	0.00	0.00	5.50	5.50	5.50	5.50	0.01	0.01	0.01	0.01	0.00	0.00	0.00	0.00
Serbia	0.00	0.00	0.00	0.00	2.50	2.50	2.50	2.50	0.01	0.01	0.01	0.01	0.00	0.00	0.00	0.00
Australia	0.04	0.04	0.04	0.04	0.75	0.68	0.68	0.68	0.03	0.03	0.03	0.03	0.00	0.00	0.00	0.00
Others	0.04	0.03	0.04	0.04	1.84	1.00	1.87	1.87	0.07	0.03	0.07	0.07	0.00	0.00	0.04	121.88

World and Selected Countries and Regions

Table 08 Sorghum Area, Yield, and Production

Country / Region	Area (Million hectares)				Yield (Metric tons per hectare)				Production (Million metric tons)				Change in Production			
	Prel.		2019/20 Proj.		Prel.		2019/20 Proj.		Prel.		2019/20 Proj.		From last month		From last year	
	2017/18	2018/19	Oct	Nov	2017/18	2018/19	Oct	Nov	2017/18	2018/19	Oct	Nov	MMT	Percent	MMT	Percent
World	39.45	40.12	40.96	40.93	1.47	1.49	1.44	1.43	58.00	59.81	58.80	58.53	-0.27	-0.46	-1.28	-2.15
United States	2.04	2.05	1.91	1.91	4.50	4.53	4.64	4.76	9.19	9.27	8.86	9.08	0.23	2.59	-0.19	-2.02
Total Foreign	37.41	38.07	39.05	39.02	1.30	1.33	1.28	1.27	48.81	50.54	49.94	49.44	-0.50	-1.00	-1.10	-2.17
Africa																
Nigeria	5.82	5.80	5.90	5.90	1.19	1.17	1.17	1.17	6.94	6.80	6.90	6.90	0.00	0.00	0.10	1.47
Ethiopia	1.90	1.90	1.85	1.90	2.72	2.71	2.70	2.74	5.17	5.15	5.00	5.20	0.20	4.00	0.05	0.97
Sudan	5.41	7.00	7.00	7.00	0.69	0.71	0.57	0.57	3.74	4.95	4.00	4.00	0.00	0.00	-0.95	-19.24
Burkina	1.67	1.80	1.80	1.80	0.82	1.07	1.00	1.00	1.37	1.93	1.80	1.80	0.00	0.00	-0.13	-6.74
Mali	1.39	1.50	1.50	1.50	1.03	0.98	0.87	0.87	1.42	1.47	1.30	1.30	0.00	0.00	-0.17	-11.56
Niger	3.82	3.70	3.70	3.70	0.51	0.57	0.49	0.51	1.95	2.10	1.80	1.90	0.10	5.56	-0.20	-9.52
Cameroon	0.85	0.85	0.85	0.85	1.59	1.41	1.65	1.41	1.35	1.20	1.40	1.20	-0.20	-14.29	0.00	0.00
Tanzania	0.78	0.80	0.80	0.80	0.96	0.84	1.00	1.00	0.76	0.67	0.80	0.80	0.00	0.00	0.13	19.05
Egypt	0.14	0.14	0.14	0.14	5.36	5.36	5.36	5.36	0.75	0.75	0.75	0.75	0.00	0.00	0.00	0.00
Uganda	0.42	0.42	0.35	0.41	0.75	0.98	0.97	0.93	0.32	0.41	0.34	0.38	0.04	11.76	-0.03	-7.54
Ghana	0.25	0.25	0.25	0.25	1.11	1.26	1.12	1.12	0.28	0.32	0.28	0.28	0.00	0.00	-0.04	-11.39
Mozambique	0.21	0.25	0.20	0.30	1.19	1.18	0.90	1.08	0.25	0.30	0.18	0.33	0.15	80.56	0.03	10.17
South Africa	0.03	0.05	0.05	0.05	3.97	2.70	2.60	2.67	0.12	0.14	0.13	0.12	-0.01	-7.69	-0.02	-11.11
Mexico	1.35	1.35	1.50	1.35	3.37	3.48	3.33	3.33	4.55	4.70	5.00	4.50	-0.50	-10.00	-0.20	-4.26
South America																
Argentina	0.70	0.63	0.58	0.58	4.29	3.97	4.35	4.35	3.00	2.50	2.50	2.50	0.00	0.00	0.00	0.00
Brazil	0.78	0.73	0.73	0.73	2.73	2.97	2.83	2.88	2.14	2.18	2.05	2.10	0.05	2.44	-0.08	-3.54
South Asia																
India	5.02	4.01	5.00	5.00	0.96	0.94	0.90	0.90	4.80	3.76	4.50	4.50	0.00	0.00	0.74	19.68
Pakistan	0.26	0.24	0.24	0.24	0.60	0.59	0.58	0.58	0.15	0.14	0.14	0.14	0.00	0.00	0.00	0.00
China	0.51	0.72	0.75	0.75	4.87	4.79	4.80	4.80	2.47	3.45	3.60	3.60	0.00	0.00	0.15	4.35
Australia	0.46	0.50	0.50	0.40	2.72	2.58	2.80	2.75	1.26	1.28	1.40	1.10	-0.30	-21.43	-0.18	-13.93
European Union	0.12	0.14	0.15	0.16	5.32	5.46	5.43	5.22	0.66	0.74	0.82	0.82	0.01	0.61	0.08	11.26
Others	5.52	5.30	5.22	5.22	0.98	1.06	1.01	1.00	5.39	5.62	5.26	5.23	-0.03	-0.51	-0.39	-6.89

World and Selected Countries and Regions

Table 09 Rice Area, Yield, and Production
World and Selected Countries and Regions

Country / Region	Area (Million hectares)				Yield (Metric tons per hectare)				Production (Million metric tons)				Change in Production			
	2017/18	Prel.	2019/20 Proj.		2017/18	Prel.	2019/20 Proj.		2017/18	Prel.	2019/20 Proj.		From last month		From last year	
		2018/19	Oct	Nov		2018/19	Oct	Nov		2018/19	Oct	Nov	MMT	Percent	MMT	Percent
World	162.18	163.52	162.34	162.50	4.56	4.56	4.58	4.58	494.88	499.34	497.77	497.76	-0.02	0.00	-1.59	-0.32
United States	0.96	1.18	1.00	1.00	8.41	8.62	8.54	8.51	5.66	7.12	5.99	5.97	-0.02	-0.38	-1.15	-16.18
Total Foreign	161.21	162.34	161.34	161.49	4.53	4.53	4.56	4.55	489.23	492.22	491.78	491.79	0.01	0.00	-0.43	-0.09
East Asia																
China	30.75	30.19	30.00	30.00	6.92	7.03	6.95	6.95	148.87	148.49	146.00	146.00	0.00	0.00	-2.49	-1.68
Japan	1.56	1.55	1.55	1.55	6.87	6.79	6.93	6.93	7.79	7.66	7.80	7.80	0.00	0.00	0.14	1.87
Korea, South	0.76	0.74	0.73	0.73	7.01	6.99	7.07	7.07	3.97	3.87	3.88	3.88	0.00	0.00	0.01	0.31
Korea, North	0.48	0.50	0.50	0.50	5.09	4.18	4.18	4.18	1.57	1.36	1.36	1.36	0.00	0.00	0.00	0.00
South Asia																
India	42.90	44.50	43.00	43.50	3.94	3.92	3.98	3.97	112.76	116.42	114.00	115.00	1.00	0.88	-1.42	-1.22
Bangladesh	11.27	11.77	11.83	11.83	4.35	4.46	4.50	4.50	32.65	35.00	35.50	35.50	0.00	0.00	0.50	1.43
Pakistan	2.80	2.88	2.90	2.90	4.02	3.85	3.88	3.88	7.50	7.40	7.50	7.50	0.00	0.00	0.10	1.35
Nepal	1.49	1.50	1.50	1.50	3.34	3.73	3.53	3.53	3.31	3.73	3.53	3.53	0.00	0.00	-0.20	-5.36
Sri Lanka	0.77	1.10	1.00	1.00	4.30	3.96	4.50	4.50	2.25	2.96	3.06	3.06	0.00	0.00	0.10	3.38
Southeast Asia																
Indonesia	12.25	12.10	12.25	12.00	4.76	4.78	4.81	4.79	37.00	36.70	37.40	36.50	-0.90	-2.41	-0.20	-0.54
Vietnam	7.65	7.67	7.67	7.67	5.79	5.83	5.91	5.91	27.66	27.92	28.30	28.30	0.00	0.00	0.38	1.35
Thailand	10.76	10.83	10.90	10.90	2.90	2.85	2.85	2.85	20.58	20.34	20.50	20.50	0.00	0.00	0.16	0.79
Burma	7.10	7.10	7.10	7.10	2.90	2.90	2.93	2.93	13.20	13.18	13.30	13.30	0.00	0.00	0.13	0.95
Philippines	4.84	4.74	4.85	4.70	4.01	3.93	3.99	4.05	12.24	11.73	12.20	12.00	-0.20	-1.64	0.27	2.28
Cambodia	3.18	3.19	3.19	3.19	2.86	2.89	2.92	2.92	5.55	5.63	5.69	5.69	0.00	0.00	0.06	0.98
Laos	0.96	0.82	0.99	0.99	3.30	3.25	3.30	3.30	2.00	1.68	2.05	2.05	0.00	0.00	0.37	22.02
Malaysia	0.70	0.70	0.70	0.70	4.03	4.01	4.01	4.01	1.82	1.83	1.83	1.83	0.00	0.00	0.00	0.00
South America																
Brazil	1.97	1.70	1.68	1.68	6.12	6.18	6.25	6.25	8.20	7.14	7.14	7.14	0.00	0.00	0.00	0.00
Peru	0.42	0.44	0.44	0.42	7.20	7.16	7.33	7.51	2.10	2.15	2.20	2.15	-0.05	-2.27	0.00	0.00
Africa																
Egypt	0.76	0.46	0.76	0.76	8.18	8.78	8.20	8.20	4.30	2.80	4.30	4.30	0.00	0.00	1.50	53.57
Madagascar	1.43	1.50	1.50	1.50	2.18	2.67	2.80	2.80	1.98	2.56	2.69	2.69	0.00	0.00	0.13	5.00
Nigeria	3.60	3.60	3.60	3.60	2.08	2.11	2.16	2.16	4.73	4.79	4.90	4.90	0.00	0.00	0.11	2.34
European Union	0.43	0.41	0.42	0.42	6.71	6.76	6.89	6.89	2.01	1.94	2.01	2.01	0.00	0.00	0.07	3.45
Iran	0.57	0.58	0.58	0.58	5.33	5.25	5.25	5.25	2.01	1.99	1.99	1.99	0.00	0.00	0.00	0.00
Others	11.83	11.78	11.73	11.80	2.98	2.97	2.94	2.95	23.18	22.96	22.66	22.82	0.16	0.70	-0.14	-0.61

Yield is on a rough basis, before the milling process. Production is on a milled basis, after the milling process.

Table 10 Total Oilseed Area, Yield, and Production

World and Selected Countries and Regions

Country / Region	Area (Million hectares)				Yield (Metric tons per hectare)				Production (Million metric tons)				Change in Production			
	Prel.		2019/20 Proj.		Prel.		2019/20 Proj.		Prel.		2019/20 Proj.		From last month		From last year	
	2017/18	2018/19	Oct	Nov	2017/18	2018/19	Oct	Nov	2017/18	2018/19	Oct	Nov	MMT	Percent	MMT	Percent
World Total	--	--	--	--	--	--	--	--	580.77	596.69	574.85	571.30	-3.55	-0.62	-25.39	-4.26
Total Foreign	--	--	--	--	--	--	--	--	449.29	465.97	466.92	463.55	-3.37	-0.72	-2.42	-0.52
Oilseed, Copra	--	--	--	--	--	--	--	--	5.94	5.98	5.81	5.81	0.00	0.00	-0.17	-2.84
Oilseed, Palm Kernel	--	--	--	--	--	--	--	--	18.76	19.50	20.05	20.05	0.00	0.00	0.56	2.86
Major Oilseeds	247.16	248.77	243.88	244.14	2.25	2.30	2.25	2.23	556.08	571.21	548.98	545.43	-3.55	-0.65	-25.78	-4.51
United States	42.80	41.42	37.57	37.57	3.07	3.16	2.87	2.87	131.48	130.72	107.93	107.74	-0.18	-0.17	-22.97	-17.57
Foreign Oilseeds	204.36	207.35	206.32	206.58	2.08	2.12	2.14	2.12	424.60	440.49	441.06	437.69	-3.37	-0.76	-2.81	-0.64
South America	61.57	63.40	65.00	64.94	2.97	3.12	3.11	3.11	183.13	197.70	201.84	201.69	-0.15	-0.08	3.99	2.02
Brazil	36.56	37.73	38.64	38.64	3.44	3.22	3.30	3.30	125.68	121.64	127.47	127.47	0.00	0.00	5.82	4.79
Argentina	18.70	19.20	19.94	19.88	2.27	3.18	2.92	2.93	42.52	61.00	58.32	58.16	-0.15	-0.26	-2.84	-4.65
Paraguay	3.47	3.78	3.67	3.67	2.99	2.37	2.81	2.81	10.39	8.97	10.31	10.31	0.00	0.00	1.34	14.97
Bolivia	1.53	1.52	1.58	1.58	1.77	1.83	1.90	1.90	2.71	2.78	3.00	3.00	0.00	0.00	0.22	7.91
Uruguay	1.15	1.02	1.01	1.01	1.23	2.86	2.28	2.28	1.41	2.92	2.30	2.30	0.00	0.00	-0.62	-21.18
China	24.08	24.18	24.90	24.90	2.48	2.48	2.48	2.48	59.60	59.88	61.83	61.63	-0.20	-0.32	1.75	2.93
South Asia	38.34	39.51	39.26	39.61	1.02	0.99	1.05	0.98	39.02	39.25	41.20	38.73	-2.47	-6.00	-0.51	-1.31
India	34.87	36.40	35.93	36.28	0.99	0.96	1.03	0.96	34.64	35.07	37.02	34.81	-2.21	-5.98	-0.27	-0.76
Pakistan	3.11	2.75	2.98	2.98	1.27	1.37	1.27	1.18	3.96	3.75	3.77	3.51	-0.26	-6.91	-0.25	-6.61
European Union	12.41	12.39	11.18	11.20	2.85	2.64	2.69	2.68	35.34	32.76	30.11	29.99	-0.12	-0.39	-2.77	-8.44
Former Soviet Union - 12	24.37	25.48	25.28	25.28	1.66	1.80	1.79	1.80	40.45	45.73	45.22	45.49	0.27	0.60	-0.24	-0.53
Russia	10.66	12.18	12.40	12.40	1.45	1.54	1.56	1.56	15.48	18.73	19.40	19.40	0.00	0.00	0.67	3.60
Ukraine	9.57	9.23	9.03	9.03	2.07	2.42	2.35	2.38	19.81	22.31	21.20	21.50	0.30	1.42	-0.81	-3.63
Uzbekistan	1.25	1.10	1.05	1.05	1.21	1.17	1.12	1.12	1.51	1.28	1.18	1.18	0.00	0.00	-0.11	-8.42
Canada	12.23	11.69	10.72	10.72	2.38	2.37	2.43	2.38	29.10	27.67	26.05	25.55	-0.50	-1.92	-2.12	-7.65
Africa	21.35	22.14	21.66	21.66	0.99	1.03	0.96	0.96	21.23	22.85	20.70	20.70	0.00	0.00	-2.15	-9.40
Nigeria	4.09	4.09	4.07	4.07	1.31	1.36	1.16	1.16	5.34	5.58	4.70	4.70	0.00	0.00	-0.88	-15.70
South Africa	1.48	1.31	1.51	1.51	1.73	1.51	1.57	1.57	2.55	1.98	2.37	2.37	0.00	0.00	0.40	20.00
Tanzania	1.35	1.50	1.50	1.50	0.89	0.86	0.85	0.85	1.20	1.29	1.28	1.28	0.00	0.00	-0.01	-0.86
Southeast Asia	3.22	3.19	3.15	3.15	1.40	1.39	1.39	1.39	4.52	4.43	4.39	4.39	0.00	0.00	-0.05	-1.08
Indonesia	1.00	0.98	0.95	0.95	1.61	1.57	1.58	1.58	1.62	1.55	1.50	1.50	0.00	0.00	-0.05	-2.91
Burma	1.88	1.88	1.88	1.88	1.19	1.18	1.18	1.18	2.24	2.22	2.21	2.21	0.00	0.00	-0.01	-0.27
Australia	3.76	2.33	2.13	2.08	1.44	1.25	1.25	1.23	5.43	2.92	2.65	2.55	-0.10	-3.78	-0.38	-12.90
Turkey	1.25	1.33	1.38	1.38	2.53	2.63	2.48	2.41	3.17	3.49	3.43	3.33	-0.10	-2.86	-0.15	-4.39
Others	1.77	1.73	1.66	1.66	2.04	2.21	2.19	2.19	3.62	3.82	3.64	3.64	0.00	0.00	-0.18	-4.71

World Total and Total Foreign: (Major Oilseeds plus copra and palm kernel) Major Oilseeds: (soybeans, sunflowerseeds, peanuts(inshell), cottonseed and rapeseed)

Table 11 Soybean Area, Yield, and Production

Country / Region	Area (Million hectares)				Yield (Metric tons per hectare)				Production (Million metric tons)				Change in Production			
	Prel.		2019/20 Proj.		Prel.		2019/20 Proj.		Prel.		2019/20 Proj.		From last month		From last year	
	2017/18	2018/19	Oct	Nov	2017/18	2018/19	Oct	Nov	2017/18	2018/19	Oct	Nov	MMT	Percent	MMT	Percent
World	124.59	125.48	122.47	122.72	2.74	2.85	2.77	2.74	341.61	358.21	338.97	336.56	-2.41	-0.71	-21.65	-6.04
United States	36.24	35.45	30.61	30.61	3.31	3.40	3.16	3.16	120.07	120.52	96.62	96.62	-0.01	-0.01	-23.90	-19.83
Total Foreign	88.35	90.03	91.86	92.11	2.51	2.64	2.64	2.60	221.54	237.69	242.35	239.95	-2.40	-0.99	2.25	0.95
South America																
Brazil	35.15	35.90	36.90	36.90	3.47	3.26	3.33	3.33	122.00	117.00	123.00	123.00	0.00	0.00	6.00	5.13
Argentina	16.30	16.60	17.50	17.50	2.32	3.33	3.03	3.03	37.80	55.30	53.00	53.00	0.00	0.00	-2.30	-4.16
Paraguay	3.40	3.70	3.60	3.60	3.03	2.39	2.83	2.83	10.30	8.85	10.20	10.20	0.00	0.00	1.35	15.25
Bolivia	1.40	1.40	1.45	1.45	1.86	1.93	2.00	2.00	2.60	2.70	2.90	2.90	0.00	0.00	0.20	7.41
Uruguay	1.10	0.97	0.95	0.95	1.21	2.93	2.32	2.32	1.33	2.83	2.20	2.20	0.00	0.00	-0.63	-22.21
East Asia																
China	8.25	8.40	9.00	9.00	1.85	1.89	1.90	1.90	15.28	15.90	17.10	17.10	0.00	0.00	1.20	7.55
Korea, South	0.05	0.05	0.05	0.05	1.87	1.75	1.80	1.80	0.09	0.09	0.09	0.09	0.00	0.00	0.00	3.37
Korea, North	0.15	0.15	0.15	0.15	1.49	1.50	1.50	1.50	0.22	0.23	0.23	0.23	0.00	0.00	0.00	0.00
Japan	0.15	0.15	0.15	0.15	1.66	1.45	1.69	1.69	0.25	0.21	0.25	0.25	0.00	0.00	0.04	18.78
India	10.40	11.33	11.00	11.25	0.80	0.96	1.00	0.80	8.35	10.93	11.00	9.00	-2.00	-18.18	-1.93	-17.66
Canada	2.94	2.54	2.30	2.30	2.63	2.86	2.83	2.61	7.72	7.27	6.50	6.00	-0.50	-7.69	-1.27	-17.43
Former Soviet Union - 12																
Russia	2.57	2.74	2.90	2.90	1.41	1.47	1.48	1.48	3.62	4.03	4.30	4.30	0.00	0.00	0.27	6.78
Ukraine	1.98	1.73	1.55	1.55	1.97	2.58	2.32	2.39	3.89	4.46	3.60	3.70	0.10	2.78	-0.76	-17.06
European Union	0.93	0.93	0.91	0.91	2.74	2.88	2.86	2.86	2.54	2.66	2.60	2.60	0.00	0.00	-0.06	-2.40
Southeast Asia																
Indonesia	0.42	0.41	0.40	0.40	1.29	1.27	1.28	1.28	0.54	0.52	0.51	0.51	0.00	0.00	-0.01	-1.92
Vietnam	0.06	0.05	0.05	0.05	1.50	1.53	1.52	1.52	0.09	0.08	0.08	0.08	0.00	0.00	-0.01	-6.17
Thailand	0.04	0.04	0.03	0.03	1.57	1.57	1.53	1.53	0.06	0.06	0.05	0.05	0.00	0.00	0.00	-5.45
Burma	0.15	0.15	0.15	0.15	1.07	1.07	1.07	1.07	0.16	0.16	0.16	0.16	0.00	0.00	0.00	0.00
Serbia	0.20	0.22	0.22	0.22	2.30	2.84	2.73	2.73	0.46	0.63	0.60	0.60	0.00	0.00	-0.03	-4.00
Mexico	0.26	0.19	0.14	0.14	1.65	1.75	1.57	1.57	0.43	0.34	0.22	0.22	0.00	0.00	-0.12	-34.33
Africa																
South Africa	0.79	0.73	0.80	0.80	1.96	1.60	1.81	1.81	1.54	1.17	1.45	1.45	0.00	0.00	0.28	23.93
Nigeria	1.00	1.00	1.00	1.00	0.99	1.05	1.10	1.10	0.99	1.05	1.10	1.10	0.00	0.00	0.05	4.36
Zambia	0.23	0.19	0.20	0.20	1.56	1.58	1.43	1.43	0.35	0.30	0.28	0.28	0.00	0.00	-0.02	-7.26
Uganda	0.05	0.05	0.05	0.05	0.60	0.60	0.60	0.60	0.03	0.03	0.03	0.03	0.00	0.00	0.00	0.00
Middle East																
Iran	0.08	0.07	0.07	0.07	2.41	2.29	2.43	2.43	0.20	0.16	0.17	0.17	0.00	0.00	0.01	6.25
Turkey	0.02	0.03	0.03	0.03	3.75	3.80	3.89	3.89	0.09	0.10	0.11	0.11	0.00	0.00	0.01	10.53
Others	0.31	0.33	0.32	0.32	1.95	1.98	1.97	1.97	0.61	0.65	0.62	0.62	0.00	0.00	-0.03	-4.29

World and Selected Countries and Regions

Table 12 Cottonseed Area, Yield, and Production

Country / Region	Area (Million hectares)				Yield (Metric tons per hectare)				Production (Million metric tons)				Change in Production			
	2017/18	Prel.	2019/20 Proj.		2017/18	Prel.	2019/20 Proj.		2017/18	Prel.	2019/20 Proj.		From last month		From last year	
		2018/19	Oct	Nov		2018/19	Oct	Nov		2018/19	Oct	Nov	MMT	Percent	MMT	Percent
World	33.10	32.89	34.11	34.23	1.36	1.32	1.34	1.30	45.15	43.55	45.62	44.61	-1.01	-2.21	1.06	2.43
United States	4.49	4.13	5.06	5.06	1.30	1.24	1.21	1.16	5.83	5.11	6.10	5.85	-0.25	-4.05	0.75	14.60
Total Foreign	28.61	28.76	29.05	29.17	1.37	1.34	1.36	1.33	39.33	38.44	39.52	38.75	-0.76	-1.93	0.31	0.81
South Asia																
India	12.60	12.60	12.90	13.00	0.98	0.89	1.00	0.98	12.31	11.25	12.95	12.74	-0.21	-1.64	1.49	13.21
Pakistan	2.70	2.30	2.50	2.50	1.32	1.43	1.32	1.21	3.55	3.29	3.29	3.03	-0.26	-7.90	-0.26	-7.90
China	3.40	3.50	3.45	3.45	3.18	3.11	3.15	3.10	10.80	10.88	10.88	10.68	-0.20	-1.80	-0.20	-1.80
Former Soviet Union - 12																
Uzbekistan	1.25	1.10	1.05	1.05	1.21	1.17	1.12	1.12	1.51	1.28	1.18	1.18	0.00	0.00	-0.11	-8.42
Turkmenistan	0.55	0.55	0.55	0.55	0.96	0.65	0.77	0.72	0.53	0.36	0.42	0.39	-0.03	-6.90	0.04	9.83
Tajikistan	0.19	0.18	0.18	0.18	0.97	0.90	0.94	0.94	0.18	0.16	0.17	0.17	0.00	0.00	0.01	4.94
Kazakhstan	0.13	0.13	0.12	0.12	0.94	1.05	0.94	0.94	0.12	0.14	0.11	0.11	0.00	0.00	-0.03	-18.52
South America																
Brazil	1.18	1.62	1.50	1.50	2.57	2.53	2.53	2.53	3.02	4.10	3.80	3.80	0.00	0.00	-0.30	-7.32
Argentina	0.32	0.38	0.36	0.36	0.87	1.09	1.03	1.03	0.28	0.41	0.37	0.37	0.00	0.00	-0.04	-10.63
Middle East																
Turkey	0.47	0.52	0.56	0.56	2.77	2.60	2.39	2.22	1.30	1.35	1.34	1.24	-0.10	-7.32	-0.11	-8.07
Syria	0.03	0.03	0.03	0.03	2.17	2.36	2.40	2.40	0.07	0.06	0.06	0.06	0.00	0.00	0.00	1.69
Iran	0.09	0.08	0.08	0.08	0.96	1.16	1.16	1.16	0.08	0.09	0.09	0.09	0.00	0.00	0.00	0.00
Australia	0.53	0.38	0.17	0.17	2.72	1.74	2.12	2.12	1.44	0.66	0.36	0.36	0.00	0.00	-0.30	-45.54
European Union	0.30	0.31	0.32	0.34	1.65	1.76	1.77	1.76	0.49	0.55	0.56	0.59	0.03	5.69	0.04	8.00
Africa																
Burkina	0.85	0.63	0.60	0.60	0.39	0.37	0.44	0.44	0.33	0.24	0.26	0.26	0.00	0.00	0.03	11.49
Mali	0.71	0.73	0.78	0.78	0.56	0.50	0.54	0.54	0.40	0.36	0.42	0.42	0.00	0.00	0.06	17.55
Cameroon	0.23	0.25	0.25	0.25	1.11	1.20	1.13	1.13	0.25	0.30	0.28	0.28	0.00	0.00	-0.02	-6.00
Cote d'Ivoire	0.33	0.39	0.43	0.43	0.66	0.60	0.57	0.57	0.22	0.23	0.24	0.24	0.00	0.00	0.01	2.99
Benin	0.53	0.65	0.68	0.68	0.71	0.71	0.71	0.71	0.38	0.46	0.48	0.48	0.00	0.00	0.02	3.46
Tanzania	0.35	0.50	0.50	0.50	0.29	0.37	0.35	0.35	0.10	0.19	0.18	0.18	0.00	0.00	-0.01	-5.91
Egypt	0.09	0.14	0.10	0.10	1.00	1.08	1.06	1.06	0.09	0.15	0.11	0.11	0.00	0.00	-0.05	-30.26
Nigeria	0.27	0.27	0.27	0.27	0.38	0.38	0.38	0.38	0.10	0.10	0.10	0.10	0.00	0.00	0.00	0.00
Uganda	0.08	0.08	0.08	0.08	1.91	1.40	1.45	1.45	0.15	0.11	0.11	0.11	0.00	0.00	0.00	3.81
Zimbabwe	0.20	0.20	0.20	0.20	0.52	0.38	0.36	0.36	0.10	0.08	0.07	0.07	0.00	0.00	0.00	-5.26
Sudan	0.18	0.18	0.20	0.20	1.35	1.42	1.54	1.54	0.24	0.26	0.31	0.31	0.00	0.00	0.05	20.78
Mexico	0.21	0.24	0.23	0.23	2.52	2.44	2.39	2.39	0.53	0.59	0.54	0.54	0.00	0.00	-0.06	-9.44
Burma	0.25	0.24	0.24	0.24	1.24	1.23	1.20	1.20	0.31	0.30	0.29	0.29	0.00	0.00	-0.01	-2.03
Others	0.63	0.59	0.76	0.76	0.72	0.86	0.73	0.73	0.45	0.51	0.56	0.56	0.00	0.00	0.05	10.28

World and Selected Countries and Regions

Table 13 Peanut Area, Yield, and Production

Country / Region	Area (Million hectares)				Yield (Metric tons per hectare)				Production (Million metric tons)				Change in Production						
	2017/18	Prel.		2019/20 Proj.		2017/18	Prel.		2019/20 Proj.		2017/18	Prel.		2019/20 Proj.		From last month		From last year	
		2018/19	Oct	Nov	2018/19		Oct	Nov	2018/19	Oct		Nov	MMT	Percent	MMT	Percent			
World	27.04	27.63	26.31	26.31	1.72	1.67	1.69	1.69	46.58	46.21	44.44	44.52	0.07	0.16	-1.69	-3.66			
United States	0.72	0.56	0.56	0.56	4.49	4.48	4.44	4.57	3.23	2.49	2.49	2.56	0.07	2.94	0.07	2.69			
Total Foreign	26.32	27.07	25.75	25.75	1.65	1.61	1.63	1.63	43.35	43.71	41.96	41.96	0.00	0.00	-1.76	-4.02			
China	4.61	4.56	4.60	4.60	3.71	3.73	3.80	3.80	17.09	17.00	17.50	17.50	0.00	0.00	0.50	2.94			
Africa																			
Nigeria	2.82	2.82	2.80	2.80	1.51	1.57	1.25	1.25	4.25	4.42	3.50	3.50	0.00	0.00	-0.92	-20.85			
Sudan	2.22	3.07	2.30	2.30	0.74	0.94	0.78	0.78	1.65	2.88	1.80	1.80	0.00	0.00	-1.08	-37.59			
Senegal	1.25	1.25	1.20	1.20	1.13	1.16	0.92	0.92	1.41	1.45	1.10	1.10	0.00	0.00	-0.35	-24.14			
Cameroon	0.43	0.43	0.43	0.43	1.40	1.40	1.40	1.40	0.60	0.60	0.60	0.60	0.00	0.00	0.00	0.00			
Ghana	0.34	0.34	0.34	0.34	1.28	1.55	1.31	1.31	0.43	0.52	0.44	0.44	0.00	0.00	-0.08	-15.38			
Chad	0.77	0.77	0.77	0.77	1.13	1.16	1.10	1.10	0.87	0.89	0.85	0.85	0.00	0.00	-0.04	-4.49			
Malawi	0.39	0.37	0.37	0.37	0.99	0.88	0.88	0.88	0.39	0.33	0.33	0.33	0.00	0.00	0.00	0.00			
Congo (Kinshasa)	0.50	0.50	0.50	0.50	0.85	0.85	0.85	0.85	0.42	0.42	0.42	0.42	0.00	0.00	0.00	0.00			
Niger	0.92	0.93	0.90	0.90	0.50	0.64	0.56	0.56	0.46	0.59	0.50	0.50	0.00	0.00	-0.09	-15.54			
Mali	0.39	0.38	0.43	0.43	0.78	1.31	1.00	1.00	0.30	0.49	0.43	0.43	0.00	0.00	-0.07	-13.44			
Uganda	0.43	0.43	0.43	0.43	0.71	0.71	0.71	0.71	0.30	0.30	0.30	0.30	0.00	0.00	0.00	0.00			
Burkina	0.56	0.56	0.56	0.56	0.60	0.59	0.80	0.80	0.33	0.33	0.45	0.45	0.00	0.00	0.12	36.36			
Guinea	0.67	0.68	0.68	0.68	1.04	1.13	1.10	1.10	0.70	0.77	0.75	0.75	0.00	0.00	-0.02	-2.60			
Egypt	0.06	0.06	0.06	0.06	3.20	3.20	3.20	3.20	0.21	0.21	0.21	0.21	0.00	0.00	0.00	0.00			
Central African Republic	0.10	0.10	0.10	0.10	1.50	1.50	1.50	1.50	0.15	0.15	0.15	0.15	0.00	0.00	0.00	0.00			
South Africa	0.06	0.02	0.05	0.05	1.36	1.25	1.50	1.50	0.08	0.03	0.08	0.08	0.00	0.00	0.05	200.00			
Mozambique	0.40	0.38	0.38	0.38	0.23	0.34	0.34	0.34	0.09	0.13	0.13	0.13	0.00	0.00	0.00	0.00			
Cote d'Ivoire	0.15	0.15	0.15	0.15	1.39	1.45	1.45	1.45	0.20	0.21	0.21	0.21	0.00	0.00	0.00	0.00			
Benin	0.16	0.19	0.19	0.19	0.88	1.19	0.92	0.92	0.14	0.23	0.18	0.18	0.00	0.00	-0.05	-22.57			
South Asia																			
India	4.89	4.99	4.50	4.50	1.36	0.95	1.16	1.16	6.65	4.72	5.20	5.20	0.00	0.00	0.48	10.17			
Pakistan	0.09	0.10	0.09	0.09	0.97	0.95	0.98	0.98	0.09	0.09	0.09	0.09	0.00	0.00	0.00	1.11			
Southeast Asia																			
Indonesia	0.58	0.57	0.55	0.55	1.85	1.80	1.80	1.80	1.08	1.03	0.99	0.99	0.00	0.00	-0.04	-3.41			
Burma	0.89	0.89	0.89	0.89	1.55	1.55	1.55	1.55	1.38	1.38	1.38	1.38	0.00	0.00	0.00	0.00			
Vietnam	0.19	0.19	0.19	0.19	2.37	2.41	2.47	2.47	0.45	0.46	0.47	0.47	0.00	0.00	0.01	2.40			
Thailand	0.02	0.02	0.02	0.02	1.67	1.67	1.67	1.67	0.04	0.04	0.04	0.04	0.00	0.00	0.00	0.00			
South America																			
Argentina	0.38	0.32	0.32	0.32	2.27	4.43	3.92	3.92	0.87	1.42	1.26	1.26	0.00	0.00	-0.16	-11.50			
Brazil	0.14	0.15	0.16	0.16	3.71	2.96	3.55	3.55	0.52	0.44	0.55	0.55	0.00	0.00	0.12	26.44			
Mexico	0.06	0.06	0.06	0.06	1.70	1.70	1.73	1.73	0.10	0.10	0.10	0.10	0.00	0.00	0.01	5.15			
Others	1.88	1.83	1.75	1.75	1.13	1.15	1.13	1.13	2.13	2.12	1.98	1.98	0.00	0.00	-0.14	-6.48			

Table 14 Sunflowerseed Area, Yield, and Production

Country / Region	Area (Million hectares)				Yield (Metric tons per hectare)				Production (Million metric tons)				Change in Production						
	2017/18	Prel.		2019/20 Proj.		2017/18	Prel.		2019/20 Proj.		2017/18	Prel.		2019/20 Proj.		From last month		From last year	
		2018/19	Oct	Nov	2018/19		Oct	Nov	2018/19	Oct		Nov	MMT	Percent	MMT	Percent			
World	25.93	26.27	26.26	26.20	1.84	1.95	1.96	1.96	47.82	51.31	51.38	51.23	-0.15	-0.30	-0.08	-0.16			
United States	0.54	0.49	0.53	0.53	1.80	1.94	1.93	1.93	0.97	0.96	1.02	1.02	0.00	0.00	0.07	6.90			
Total Foreign	25.39	25.77	25.73	25.67	1.85	1.95	1.96	1.96	46.85	50.35	50.36	50.21	-0.15	-0.31	-0.15	-0.29			
Former Soviet Union - 12																			
Russia	7.15	7.94	8.00	8.00	1.45	1.60	1.63	1.63	10.36	12.71	13.00	13.00	0.00	0.00	0.29	2.28			
Ukraine	6.80	6.50	6.20	6.20	2.01	2.31	2.34	2.34	13.70	15.00	14.50	14.50	0.00	0.00	-0.50	-3.33			
Kazakhstan	0.88	0.85	0.80	0.80	1.02	1.00	1.00	1.00	0.90	0.85	0.80	0.80	0.00	0.00	-0.05	-5.66			
European Union	4.39	4.12	4.38	4.38	2.30	2.31	2.24	2.24	10.13	9.51	9.80	9.80	0.00	0.00	0.29	3.02			
South America																			
Argentina	1.68	1.88	1.74	1.68	2.11	2.04	2.10	2.08	3.54	3.83	3.65	3.50	-0.15	-4.21	-0.33	-8.50			
Uruguay	0.05	0.06	0.06	0.06	1.56	1.61	1.67	1.67	0.08	0.09	0.10	0.10	0.00	0.00	0.01	11.11			
Bolivia	0.13	0.12	0.13	0.13	0.80	0.70	0.77	0.77	0.11	0.08	0.10	0.10	0.00	0.00	0.02	25.00			
Brazil	0.10	0.07	0.08	0.08	1.48	1.71	1.50	1.50	0.14	0.11	0.12	0.12	0.00	0.00	0.01	8.11			
Paraguay	0.03	0.03	0.03	0.03	1.66	1.69	1.70	1.70	0.05	0.05	0.05	0.05	0.00	0.00	0.00	-5.56			
China	1.17	1.25	1.25	1.25	2.69	2.60	2.60	2.60	3.15	3.25	3.25	3.25	0.00	0.00	0.00	0.00			
South Asia																			
India	0.28	0.28	0.23	0.23	0.81	0.61	0.76	0.76	0.23	0.17	0.17	0.17	0.00	0.00	0.00	-1.16			
Pakistan	0.08	0.12	0.14	0.14	1.13	1.20	1.04	1.04	0.09	0.14	0.15	0.15	0.00	0.00	0.00	0.69			
Middle East																			
Turkey	0.70	0.72	0.73	0.73	2.21	2.52	2.40	2.40	1.55	1.80	1.75	1.75	0.00	0.00	-0.05	-2.78			
Iran	0.04	0.04	0.04	0.04	1.08	1.08	1.08	1.08	0.04	0.04	0.04	0.04	0.00	0.00	0.00	0.00			
Israel	0.01	0.01	0.01	0.01	1.60	1.60	1.60	1.60	0.02	0.02	0.02	0.02	0.00	0.00	0.00	0.00			
Africa																			
Egypt	0.01	0.01	0.01	0.01	2.38	2.38	2.38	2.38	0.02	0.02	0.02	0.02	0.00	0.00	0.00	0.00			
Morocco	0.02	0.02	0.02	0.02	1.26	1.29	1.25	1.25	0.02	0.03	0.03	0.03	0.00	0.00	0.00	-7.41			
South Africa	0.60	0.52	0.61	0.61	1.43	1.32	1.23	1.23	0.86	0.68	0.75	0.75	0.00	0.00	0.07	10.29			
Burma	0.60	0.60	0.60	0.60	0.65	0.65	0.65	0.65	0.39	0.39	0.39	0.39	0.00	0.00	0.00	0.00			
Canada	0.03	0.03	0.02	0.02	2.23	2.11	2.27	2.27	0.06	0.06	0.05	0.05	0.00	0.00	-0.01	-12.28			
Australia	0.01	0.02	0.02	0.02	1.86	1.21	1.25	1.25	0.03	0.02	0.03	0.03	0.00	0.00	0.00	8.70			
Others	0.63	0.61	0.64	0.64	2.21	2.48	2.49	2.49	1.38	1.50	1.60	1.60	0.00	0.00	0.10	6.66			

World and Selected Countries and Regions

Table 15 Rapeseed Area, Yield, and Production

Country / Region	Area (Million hectares)				Yield (Metric tons per hectare)				Production (Million metric tons)				Change in Production			
	Prel.		2019/20 Proj.		Prel.		2019/20 Proj.		Prel.		2019/20 Proj.		From last month		From last year	
	2017/18	2018/19	Oct	Nov	2017/18	2018/19	Oct	Nov	2017/18	2018/19	Oct	Nov	MMT	Percent	MMT	Percent
World	36.50	36.51	34.73	34.68	2.05	1.97	1.97	1.98	74.92	71.94	68.57	68.52	-0.05	-0.07	-3.42	-4.75
United States	0.81	0.79	0.81	0.81	1.71	2.09	2.08	2.08	1.39	1.64	1.69	1.69	0.00	0.00	0.05	2.98
Total Foreign	35.69	35.72	33.92	33.87	2.06	1.97	1.97	1.97	73.53	70.29	66.88	66.83	-0.05	-0.07	-3.47	-4.93
European Union	6.80	7.03	5.58	5.58	3.26	2.85	3.08	3.05	22.18	20.03	17.15	17.00	-0.15	-0.87	-3.03	-15.14
Canada	9.27	9.12	8.40	8.40	2.30	2.23	2.32	2.32	21.33	20.34	19.50	19.50	0.00	0.00	-0.84	-4.14
China	6.65	6.47	6.60	6.60	2.00	1.99	1.98	1.98	13.27	12.85	13.10	13.10	0.00	0.00	0.25	1.95
South Asia																
India	6.70	7.20	7.30	7.30	1.06	1.11	1.05	1.05	7.10	8.00	7.70	7.70	0.00	0.00	-0.30	-3.75
Pakistan	0.24	0.23	0.24	0.24	0.96	0.98	0.98	0.98	0.23	0.23	0.24	0.24	0.00	0.00	0.01	4.44
Bangladesh	0.25	0.25	0.25	0.25	0.92	0.92	0.92	0.92	0.23	0.23	0.23	0.23	0.00	0.00	0.00	0.00
Former Soviet Union - 12																
Russia	0.95	1.50	1.50	1.50	1.58	1.33	1.40	1.40	1.50	1.99	2.10	2.10	0.00	0.00	0.11	5.58
Ukraine	0.79	1.00	1.28	1.28	2.80	2.85	2.42	2.58	2.22	2.85	3.10	3.30	0.20	6.45	0.45	15.79
Belarus	0.33	0.35	0.30	0.30	1.81	1.31	1.63	1.63	0.60	0.46	0.49	0.49	0.00	0.00	0.03	7.46
Kazakhstan	0.25	0.37	0.28	0.28	1.11	1.08	1.14	1.14	0.28	0.39	0.32	0.32	0.00	0.00	-0.07	-18.78
Australia	3.17	1.89	1.90	1.85	1.23	1.15	1.16	1.14	3.89	2.18	2.20	2.10	-0.10	-4.55	-0.08	-3.67
South America																
Chile	0.06	0.05	0.06	0.06	3.89	3.85	4.11	4.11	0.22	0.19	0.23	0.23	0.00	0.00	0.05	24.32
Paraguay	0.03	0.04	0.03	0.03	1.00	1.50	1.87	1.87	0.03	0.06	0.06	0.06	0.00	0.00	0.00	-6.67
Switzerland	0.02	0.02	0.02	0.02	3.14	3.14	3.14	3.14	0.07	0.07	0.07	0.07	0.00	0.00	0.00	0.00
Ethiopia	0.03	0.04	0.04	0.04	1.82	1.57	1.86	1.86	0.05	0.06	0.07	0.07	0.00	0.00	0.01	18.18
Others	0.15	0.17	0.15	0.15	2.17	2.16	2.23	2.23	0.33	0.38	0.33	0.33	0.00	0.00	-0.04	-10.93

World and Selected Countries and Regions

Table 16 Copra, Palm Kernel, and Palm Oil Production

Country / Region	Production (Million metric tons)				Change in Production			
	2017/18	Prel.	2019/20 Proj.		From last month		From last year	
		2018/19	Oct	Nov	MMT	Percent	MMT	Percent
Oilseed, Copra								
Philippines	2.60	2.63	2.50	2.50	0.00	0.00	-0.13	-4.94
Indonesia	1.65	1.64	1.60	1.60	0.00	0.00	-0.04	-2.44
India	0.75	0.75	0.75	0.75	0.00	0.00	0.00	0.00
Vietnam	0.28	0.29	0.29	0.29	0.00	0.00	0.00	0.00
Mexico	0.21	0.22	0.22	0.22	0.00	0.00	0.00	0.00
Papua New Guinea	0.10	0.10	0.10	0.10	0.00	0.00	0.00	0.00
Thailand	0.07	0.07	0.07	0.07	0.00	0.00	0.00	0.00
Sri Lanka	0.07	0.07	0.07	0.07	0.00	0.00	0.00	0.00
Solomon Islands	0.03	0.03	0.03	0.03	0.00	0.00	0.00	0.00
Cote d'Ivoire	0.03	0.03	0.03	0.03	0.00	0.00	0.00	0.00
World	5.94	5.98	5.81	5.81	0.00	0.00	-0.17	-2.84
Oilseed, Palm Kernel								
Indonesia	10.50	10.90	11.30	11.30	0.00	0.00	0.40	3.67
Malaysia	4.92	5.20	5.30	5.30	0.00	0.00	0.10	1.92
Thailand	0.82	0.87	0.89	0.89	0.00	0.00	0.02	2.30
Nigeria	0.73	0.73	0.73	0.73	0.00	0.00	0.00	0.00
Colombia	0.33	0.33	0.36	0.36	0.00	0.00	0.03	9.09
Guatemala	0.17	0.17	0.17	0.17	0.00	0.00	0.00	0.00
Papua New Guinea	0.17	0.17	0.17	0.17	0.00	0.00	0.00	0.00
Honduras	0.14	0.14	0.14	0.14	0.00	0.00	0.00	0.00
Brazil	0.13	0.14	0.14	0.14	0.00	0.00	0.00	0.00
Cote d'Ivoire	0.12	0.12	0.12	0.12	0.00	0.00	0.00	0.00
World	18.76	19.50	20.05	20.05	0.00	0.00	0.55	2.82
Oil, Palm								
Indonesia	39.50	41.50	43.00	43.00	0.00	0.00	1.50	3.61
Malaysia	19.68	20.80	21.20	21.00	-0.20	-0.94	0.20	0.96
Thailand	2.78	2.90	3.00	3.00	0.00	0.00	0.10	3.45
Colombia	1.63	1.63	1.68	1.68	0.00	0.00	0.06	3.70
Nigeria	1.03	1.02	1.02	1.02	0.00	0.00	0.00	0.00
Guatemala	0.85	0.85	0.85	0.85	0.00	0.00	0.00	0.00
Papua New Guinea	0.63	0.63	0.63	0.63	0.00	0.00	0.00	0.00
Ecuador	0.57	0.58	0.63	0.63	0.00	0.00	0.05	8.62
Honduras	0.58	0.58	0.58	0.58	0.00	0.00	0.00	0.00
Brazil	0.50	0.53	0.54	0.54	0.00	0.00	0.02	3.85
World	70.61	73.88	76.01	75.81	-0.20	-0.26	1.93	2.61

World and Selected Countries and Regions

Table 17 Cotton Area, Yield, and Production

Country / Region	Area (Million hectares)				Yield (Kilograms per hectare)				Production (Million 480 lb. bales)				Change in Production			
	2017/18	Prel.	2019/20 Proj.		2017/18	Prel.	2019/20 Proj.		2017/18	Prel.	2019/20 Proj.		From last month		From last year	
		2018/19	Oct	Nov		2018/19	Oct	Nov		2018/19	Oct	Nov	MBales	Percent	MBales	Percent
World	33.73	33.54	34.78	34.90	799	771	781	761	123.78	118.80	124.77	121.94	-2.83	-2.27	3.14	2.64
United States	4.49	4.13	5.06	5.06	1,014	968	934	895	20.92	18.37	21.71	20.82	-0.89	-4.09	2.45	13.34
Total Foreign	29.23	29.41	29.72	29.84	766	744	755	738	102.86	100.43	103.07	101.12	-1.95	-1.89	0.69	0.69
South Asia																
India	12.60	12.60	12.90	13.00	501	458	515	502	29.00	26.50	30.50	30.00	-0.50	-1.64	3.50	13.21
Pakistan	2.70	2.30	2.50	2.50	661	719	662	610	8.20	7.60	7.60	7.00	-0.60	-7.89	-0.60	-7.89
China	3.40	3.50	3.45	3.45	1,761	1,726	1,751	1,720	27.50	27.75	27.75	27.25	-0.50	-1.80	-0.50	-1.80
South America																
Brazil	1.18	1.62	1.50	1.50	1,708	1,683	1,684	1,684	9.22	12.52	11.60	11.60	0.00	0.00	-0.92	-7.35
Argentina	0.32	0.38	0.36	0.36	558	642	605	605	0.82	1.12	1.00	1.00	0.00	0.00	-0.12	-10.71
Paraguay	0.01	0.01	0.01	0.01	416	416	416	416	0.02	0.02	0.02	0.02	0.00	0.00	0.00	0.00
Africa																
Burkina	0.85	0.63	0.60	0.60	307	294	345	345	1.20	0.85	0.95	0.95	0.00	0.00	0.10	11.76
Mali	0.71	0.73	0.78	0.78	432	381	419	419	1.40	1.27	1.49	1.49	0.00	0.00	0.22	17.32
Cote d'Ivoire	0.33	0.39	0.43	0.43	536	486	461	461	0.81	0.88	0.90	0.90	0.00	0.00	0.03	2.86
Benin	0.53	0.65	0.68	0.68	468	469	468	468	1.14	1.40	1.45	1.45	0.00	0.00	0.05	3.57
Egypt	0.09	0.14	0.10	0.10	718	772	762	762	0.30	0.50	0.35	0.35	0.00	0.00	-0.15	-30.00
Cameroon	0.23	0.25	0.25	0.25	484	523	492	492	0.50	0.60	0.57	0.57	0.00	0.00	-0.04	-5.83
Tanzania	0.35	0.50	0.50	0.50	143	185	174	174	0.23	0.43	0.40	0.40	0.00	0.00	-0.03	-5.88
Nigeria	0.27	0.27	0.27	0.27	190	190	190	190	0.24	0.24	0.24	0.24	0.00	0.00	0.00	0.00
Zimbabwe	0.20	0.20	0.20	0.20	294	218	207	207	0.27	0.20	0.19	0.19	0.00	0.00	-0.01	-5.00
Ethiopia	0.06	0.08	0.08	0.08	639	687	680	680	0.18	0.24	0.25	0.25	0.00	0.00	0.01	2.88
Former Soviet Union - 12																
Uzbekistan	1.25	1.10	1.05	1.05	672	648	622	622	3.86	3.28	3.00	3.00	0.00	0.00	-0.28	-8.40
Turkmenistan	0.55	0.55	0.55	0.55	535	364	459	399	1.34	0.91	1.15	1.00	-0.15	-13.04	0.09	9.89
Tajikistan	0.19	0.18	0.18	0.18	671	502	532	532	0.57	0.42	0.44	0.44	0.00	0.00	0.03	6.02
Kazakhstan	0.13	0.13	0.12	0.12	523	587	558	558	0.30	0.35	0.30	0.30	0.00	0.00	-0.05	-13.04
Middle East																
Turkey	0.47	0.52	0.56	0.56	1,853	1,549	1,594	1,477	4.00	3.70	4.10	3.80	-0.30	-7.32	0.10	2.70
Syria	0.03	0.03	0.03	0.03	1,161	1,219	1,219	1,219	0.16	0.14	0.14	0.14	0.00	0.00	0.00	0.00
Iran	0.09	0.08	0.08	0.08	640	748	748	748	0.25	0.28	0.28	0.28	0.00	0.00	0.00	0.00
Australia	0.53	0.38	0.17	0.17	1,972	1,261	1,537	1,537	4.80	2.20	1.20	1.20	0.00	0.00	-1.00	-45.45
Mexico	0.21	0.24	0.23	0.23	1,617	1,555	1,529	1,529	1.56	1.74	1.58	1.58	0.00	0.00	-0.16	-8.93
Burma	0.25	0.24	0.24	0.24	634	635	635	635	0.73	0.70	0.70	0.70	0.00	0.00	0.00	0.00
Others	1.74	1.72	1.93	1.95	535	585	556	561	4.28	4.63	4.93	5.04	0.11	2.13	0.41	8.86

World and Selected Countries and Regions

TABLE 18

The table below presents a record of the November projection and the final Estimate. Using world wheat production as an example, the "root mean square error" means that chances are 2 out of 3 that the current forecast will not be above or below the final estimate by more than 1.2 percent. Chances are 9 out of 10 (90% confidence level) that the difference will not exceed 2 percent. The average difference between the November projection and the final estimate is 5.5 million tons, ranging from 0.1 million to 18.1 million tons. The November projection has been below the estimate 28 times and above 10 times.

RELIABILITY OF PRODUCTION PROJECTIONS 1/

COMMODITY AND REGION	Root mean square error	90 percent confidence interval	Difference between forecast and final estimate					
			Average	Smallest	Largest	Years		
						Below final	Above final	
	Percent		---Million metric tons---					
WHEAT								
World	1.2	2.0	5.5	0.1	18.1	28	10	
U.S.	0.4	0.7	0.2	0.0	1.2	18	13	
Foreign	1.4	2.3	5.4	0.0	18.2	28	10	
COARSE GRAINS 2/								
World	1.6	2.7	13.2	0.2	47.3	29	9	
U.S.	1.3	2.2	2.4	0.0	7.5	19	19	
Foreign	2.2	3.8	13.3	0.2	48.8	29	9	
RICE (Milled)								
World	2.1	3.6	5.9	0.1	16.8	32	6	
U.S.	2.9	4.9	0.1	0.0	0.5	19	16	
Foreign	2.1	3.6	5.9	0.2	16.9	32	6	
SOYBEANS								
World	4.0	6.8	6.1	0.1	25.1	22	16	
U.S.	2.2	3.7	1.2	0.1	4.7	15	23	
Foreign	6.6	11.2	5.9	0.0	26.4	20	18	
COTTON			---Million 480-lb. bales---					
World	3.6	6.1	2.5	0.1	9.3	24	14	
U.S.	2.9	5.0	0.4	0.0	1.0	19	18	
Foreign	4.2	7.1	2.4	0.1	8.9	24	14	
UNITED STATES			-----Million bushels-----					
<i>CORN</i>	1.3	2.2	90	0	250	19	18	
<i>SORGHUM</i>	4.1	7.0	15	1	53	20	18	
<i>BARLEY</i>	1.5	2.5	4	0	24	16	10	
<i>OATS</i>	1.1	1.9	2	0	18	7	9	

1/ Marketing years 1981/82 through 2018/19. Final for grains, soybeans and cotton is defined as the first November estimates following the marketing year for 1981/82 through 2017/18, and for 2018/19 last month's estimate.

2/ Includes corn, sorghum, barley, oats, rye, millet, and mixed grain

November 2019

Office of Global Analysis, FAS, USDA