



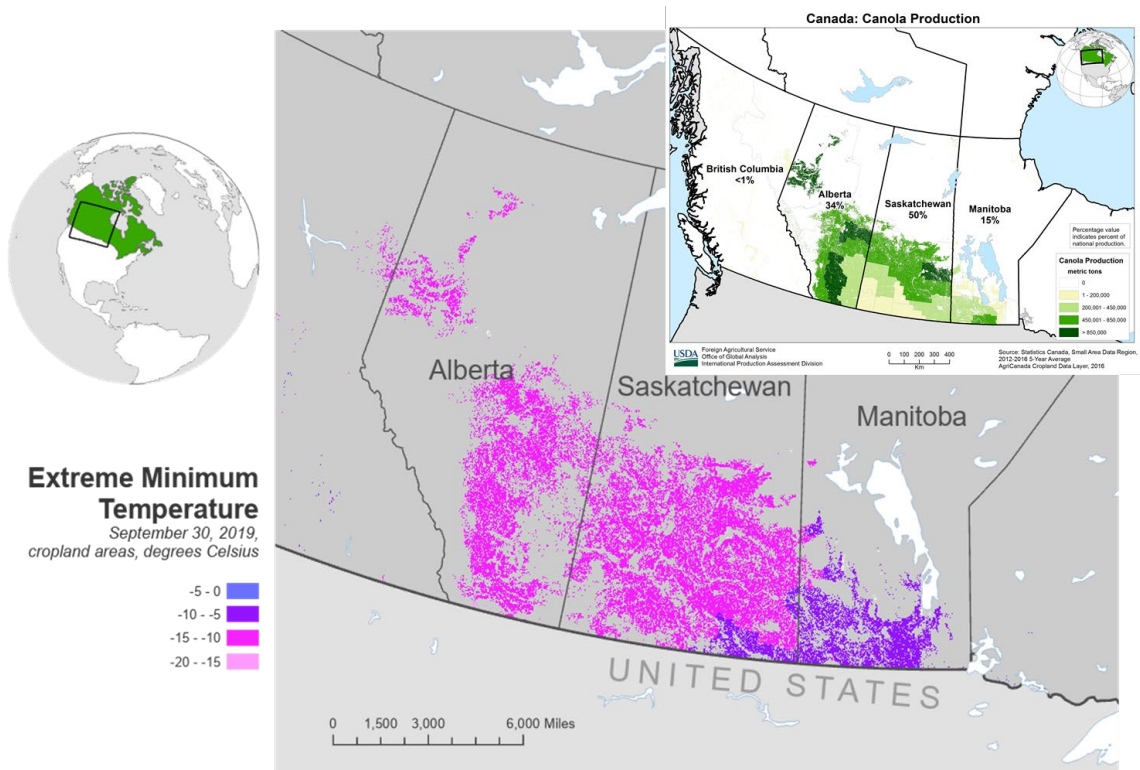
United States
Department of
Agriculture

Foreign
Agricultural
Service

Circular Series
WAP 10-19
October 2019

World Agricultural Production

Canada Rapeseed: Late September Snow Delays Harvest



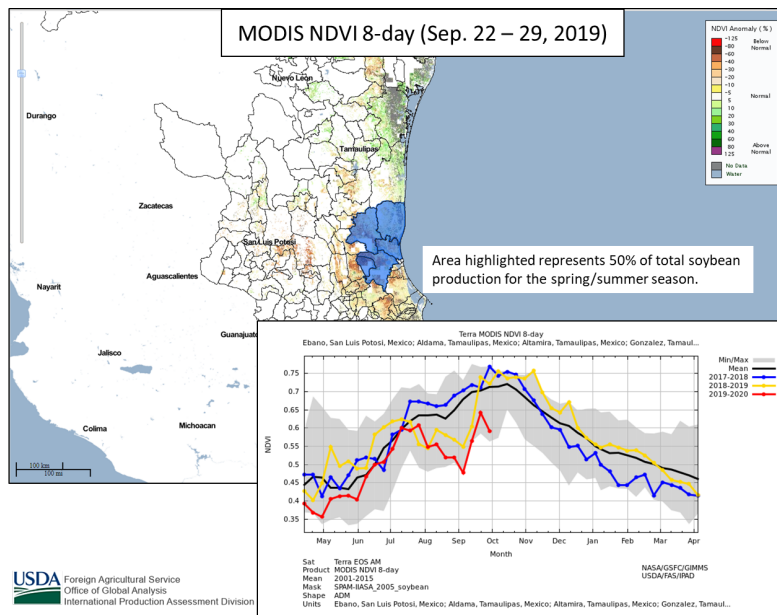
USDA Foreign Agricultural Service
Office of Global Analysis
International Production Assessment Division

Sources: United States Air Force, Daily Minimum Temperature
Agriculture and Agri-Food Canada Annual Crop Inventory, 2018

USDA estimates Canada rapeseed production for 2019/20 at 19.5 million metric tons (mmt), down 0.6 mmt from last month and down 0.8 mmt from last year. Harvested area is estimated at 8.4 million hectares (mha), unchanged from last month and down 0.7 mha from last year. Yield is estimated at 2.32 tons per hectare, down 3 percent from last month, but up 4 percent from last year. The month-to-month decrease in yield is attributed to an early winter snow storm that occurred in late September, which dropped several inches of snow on the Canadian Prairies. In addition to the snow, an early season-ending freeze occurred in the main rapeseed growing regions of Alberta, Saskatchewan and Manitoba, which produce 24, 50, and 15 percent, respectively. Canadian sources expressed concern about both lodging and pod shattering in the high moisture seeds. Harvest began in September. *(For more information, please contact Katie.McGaughey@usda.gov.)*

Approved by the World Agricultural Outlook Board

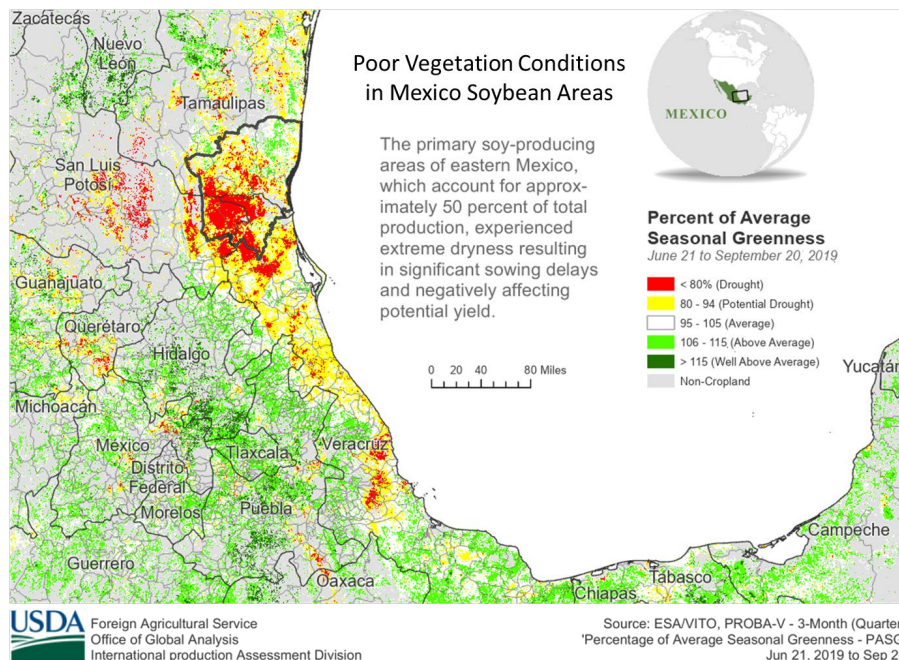
Mexico Soybeans: Severe Drought Reduces Estimated Production by Nearly Half



USDA estimates Mexico 2019/20 production at 220,000 metric tons, down 45 percent from last month and down 34 percent from last year. Area harvested is estimated at 140,000 hectares, down 41 percent from last month and down 27 percent from last year. Yield is estimated at 1.57 tons per hectare, down 7 percent from last month and 10 percent from last year.

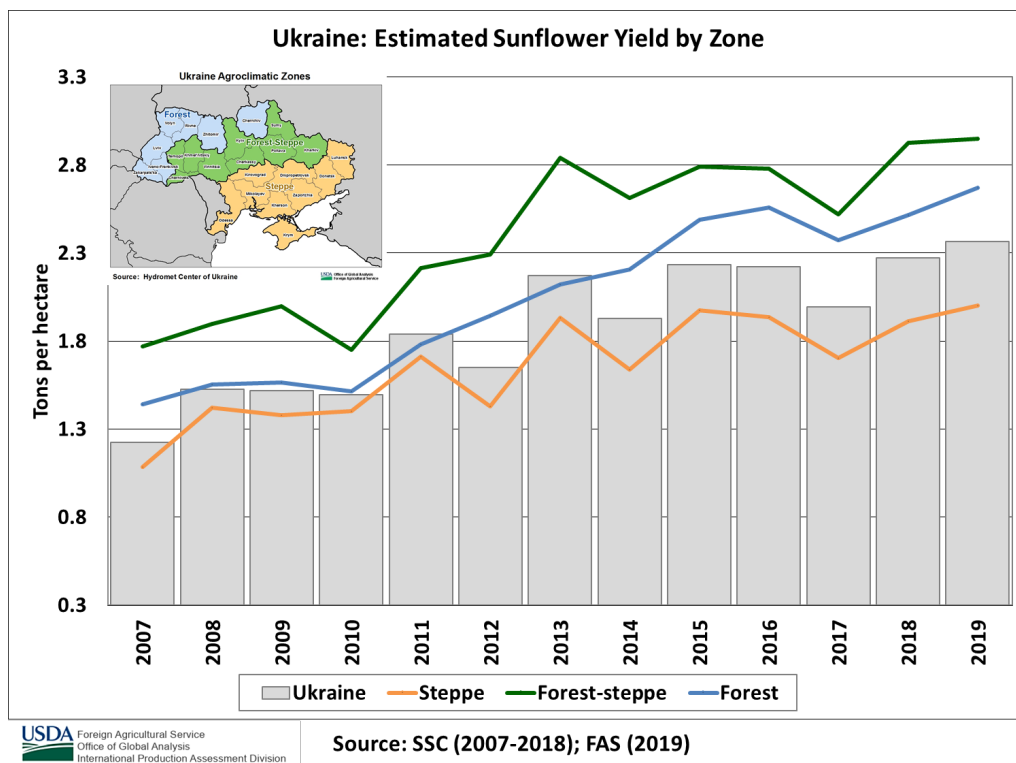
Extreme dryness during the optimal planting period in the main growing regions of Tamaulipas, San Luis Potosi and Veracruz discouraged sowing. These areas

account for roughly 50 percent of Mexico’s growing region. Official planting reports as of August 31, 2019 from Mexico’s government agricultural office, Secretaría de Agricultura y Desarrollo Rural (SADER), indicate planted area for the 2019/20 spring/summer cycle is currently down 32 percent from the same time last year. MODIS Normalized Difference Vegetation Index (NDVI) year-to-year comparison depicts lower crop vigor in the main soybean growing region. The percent of average seasonal greenness product derived from the European Space Agency’s Proba-V shows the worst conditions in the region on record.



Soybeans in Mexico are planted in two seasons, fall/winter followed by spring/summer. The spring/summer cycle is the main producing season for Mexico soybeans, which represents almost all of Mexico's total output and is planted in April through mid-July. Soybean planting and development is dependent on seasonal rainfall as nearly the entire crop in the spring/summer cycle is rain-fed. Harvest for the spring/summer cycle began in September and extends through February. (For more information, please contact Justin.Jenkins@usda.gov.)

Ukraine Sunflowerseed: Late Season Dryness Lowers Yield

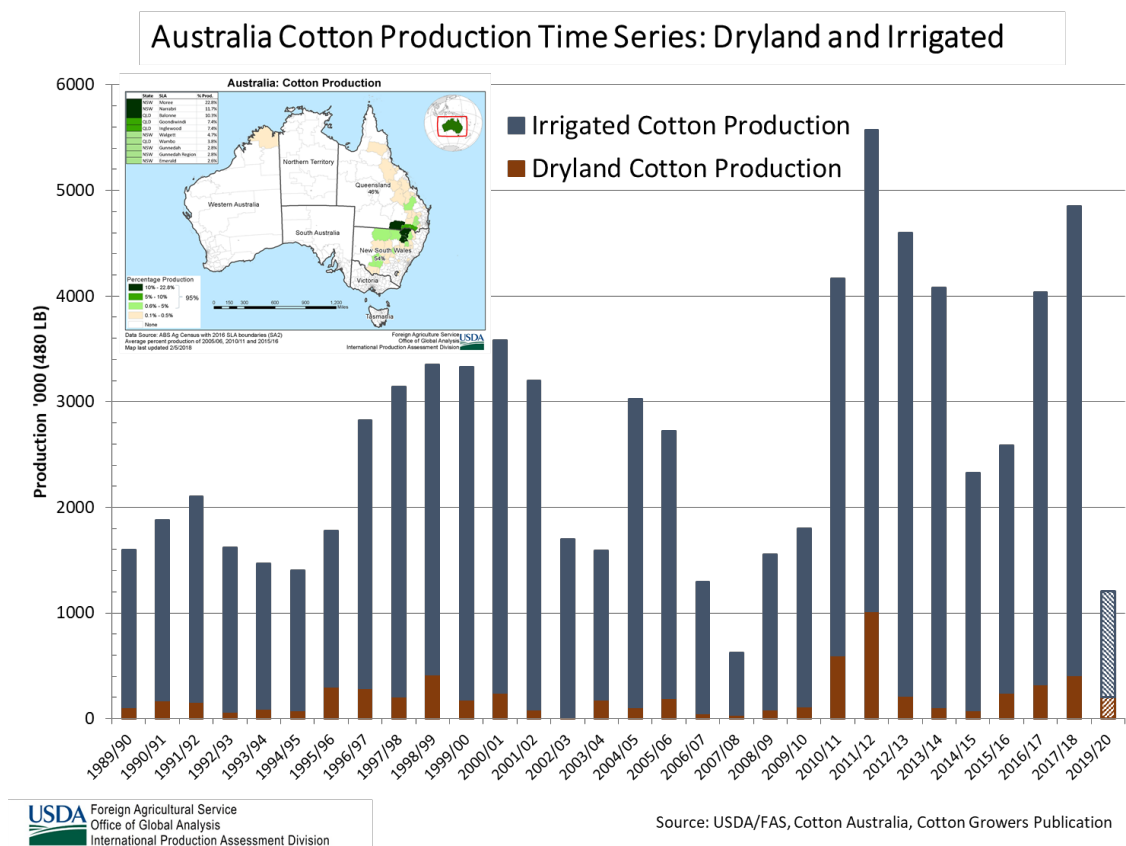


Ukraine sunflowerseed production for 2019/20 is estimated at 14.5 million metric tons (mmt), down 6 percent from last month and down 3 percent from last year. Yield is estimated at 2.34 tons per hectare, down 6 percent from last month, but up 1 percent from last year. The month-to-month decrease in yield is due to late season dryness for sunflowers in eastern and central Ukraine even though weather remained favorably cool. Recent harvest reports from the Ministry of Agriculture confirm the decreased yield. Total area is estimated at 6.2 million hectares, unchanged from last month and down 5 percent from last year. USDA crop production estimates for Ukraine include estimated output from Crimea. (For more information, please contact Katie.McGaughey@usda.gov.)

Australia Cotton: Production Forecast Down 45 Percent From Last Year

USDA forecasts 2019/20 Australia cotton production at 1.2 million 480-pound bales, down 200,000 bales (14 percent) from last month and down 1.0 million (45 percent) from last year. Harvested area is estimated at 170,000 hectares, down 15 percent from last month, and down 55 percent from last year. Yield is forecast at 1,537 kilograms per hectare, 16 percent below the 5-year average. The 55 percent decrease in cotton area from last year is due to the decrease in

irrigation water availability that was exacerbated by below normal precipitation during the past six months.

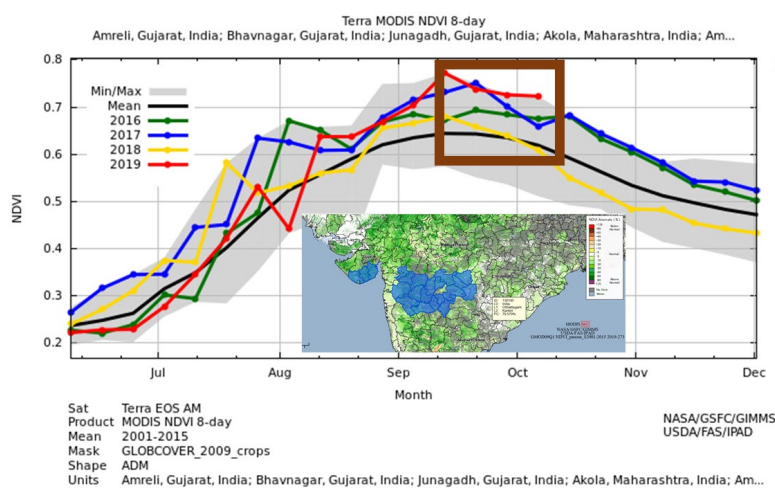


Irrigated cotton yields are substantially higher than dryland yields, and the difference widens in low-rainfall years. On average about 90 percent of Australia’s total cotton comes from irrigated areas. Dryland planting tends to vary with the seasonal weather forecast and prices at sowing. Sorghum and cotton are the two dominant summer crops in eastern Australia. Cotton sowing began in October and harvest begins in April. *(For more information, please contact James.Crutchfield@usda.gov.)*

India Cotton: Record Area Harvested

USDA estimates India cotton production for 2019/20 at 30.5 million 480-pound bales, up 3 percent from last month and up 15 percent from the previous year. The increase is based on improved weather conditions and record planted area in the major cotton regions of Gujarat and Maharashtra. Harvested area is estimated at 12.9 million hectares, up nearly 2 percent from the previous month and up 2 percent from last year. Yield is estimated at 515 kilograms per hectare, up 12 percent from last year.

Major Cotton Areas in Gujarat and Maharashtra NDVI



USDA Foreign Agricultural Service
Office of Global Analysis
International Production Assessment Division

27, 2019 planting progress is up 5 percent from both last year and 5-year average. Planting activities have ended. Harvest has begun in the northern areas and in the early planted cotton areas of Gujarat. (For more information, please contact Arnella.Trent@usda.gov.)

Yield is expected to bounce back from last year's drought-reduced crop. Although the Southwest Monsoon was underperforming early in the season, it resumed and progressed to the major cotton areas in central India: Gujarat, Maharashtra and Madhya Pradesh in late July. Currently the crop is in the boll stage in central India. NDVI analysis is showing strong crop vigor in both Gujarat and Maharashtra.

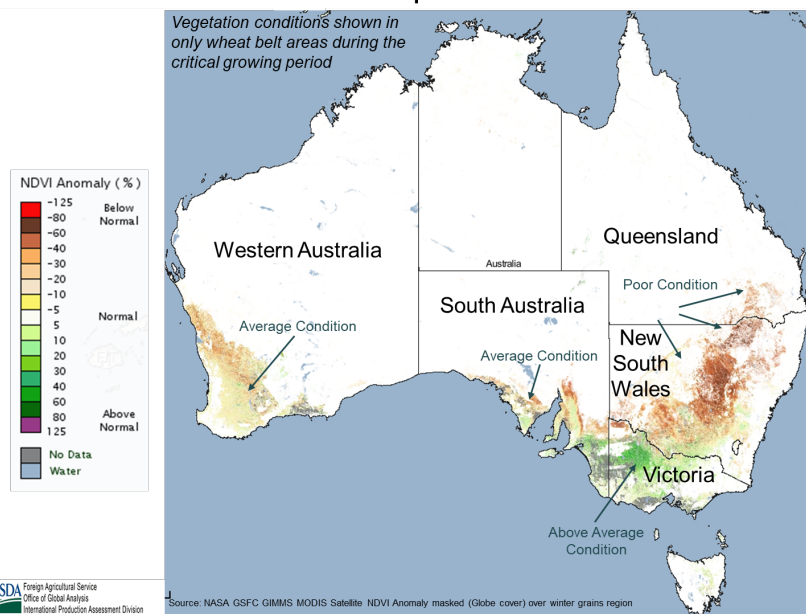
According to the *All India Crop Situation* report from September

Australia Wheat: Production Forecast Revised Down

USDA forecasts Australia's 2019/20 wheat production at 18.0 million metric tons (mmt), down 1.0 mmt (5 percent) from last month, but up 0.7 mmt (4 percent) from last year. Harvested area is expected to total 10.7 million hectares (mha), unchanged from last month, but up 0.5 mha (5 percent) from last year. Yield is forecast at 1.68 tons per hectare, 17 percent below the 5-year average.

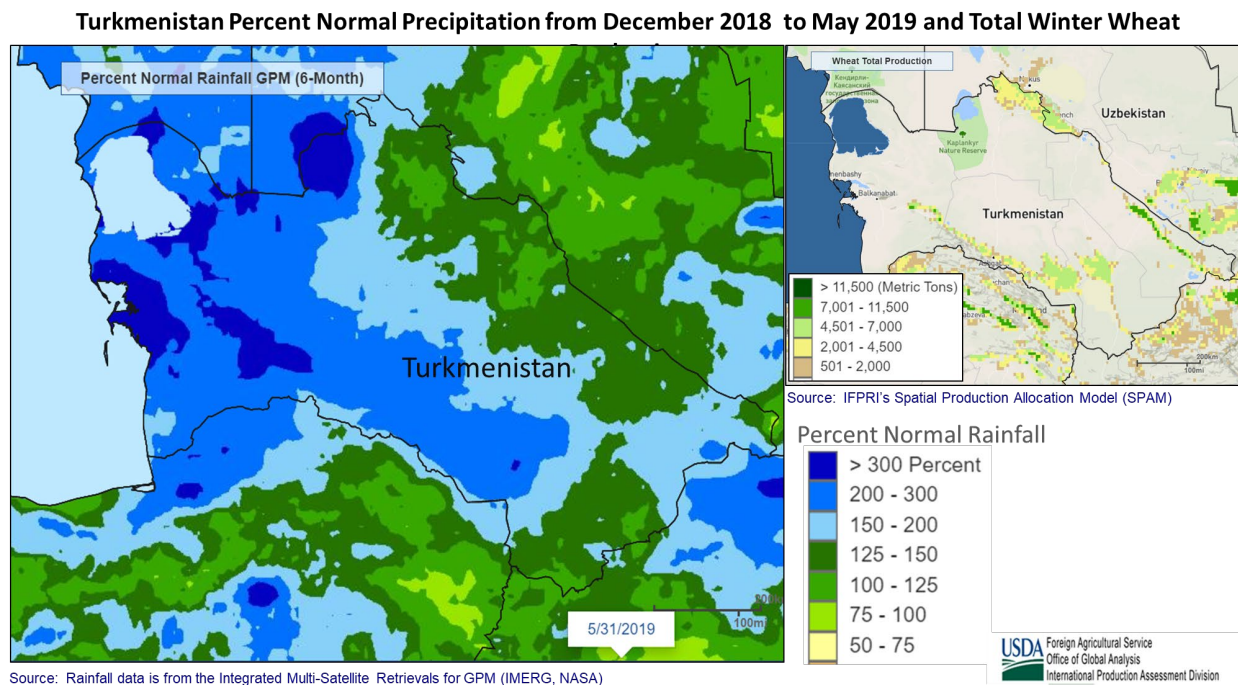
Australia's wheat region has experienced a mixed start. Sowing operations were facilitated by timely rainfall in May in most cropping regions of Western Australia, South Australia, Victoria, and southern New South Wales. However, the eastern states of Queensland (QLD) and northern New South Wales (NSW) received below-normal precipitation for the entire season, resulting in significantly lower yield potential. Nationwide, the wheat crop faces deteriorating conditions heading into spring, reflecting below-average September winter rainfall and soil moisture conditions. This is corroborated by satellite-derived vegetation indices showing

Australia Satellite Derived Winter Crop Conditions 9/22/2019 to 9/29/2019



poor vegetation conditions in QLD and NSW. Harvest will begin in November. (*For more information, please contact James.Crutchfield@usda.gov.*)

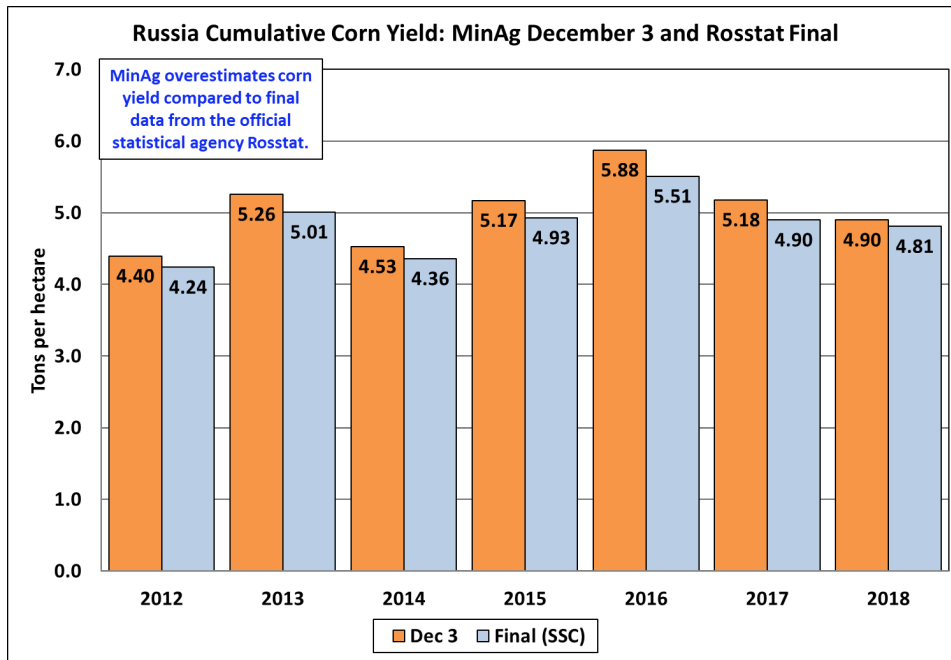
Turkmenistan Wheat: Crop Rebounds 114 Percent from Last Year's Low Output



USDA estimates 2019/20 Turkmenistan wheat production at 1.5 million metric tons, up 700,000 tons (88 percent) from last month, and up 114 percent from last year. Harvested area is estimated at 900,000 hectares (ha), up 17 percent from both last month and last year. Yield is estimated at 1.70 tons per hectare, up 60 percent from last month and 83 percent from last year. Timely and well-distributed precipitation contributed to favorable growing conditions all season. In addition, spring irrigation sources improved from the accumulation of normal snow pack levels that feed the Amu Darya River system. The winter wheat crop is more than double last year's crop which suffered from diminished irrigation and precipitation. Harvest of the wheat crop finished in August. (*For more information, please contact William.Baker@usda.gov.*)

Russia Corn: Estimated Production Increases Based on Higher-Than-Expected Yield

USDA estimates Russia corn production for 2019/20 at 13.5 million metric tons (mmt), up 4 percent from last month and up 18 percent from last year. Yield is estimated at 5.51 tons per

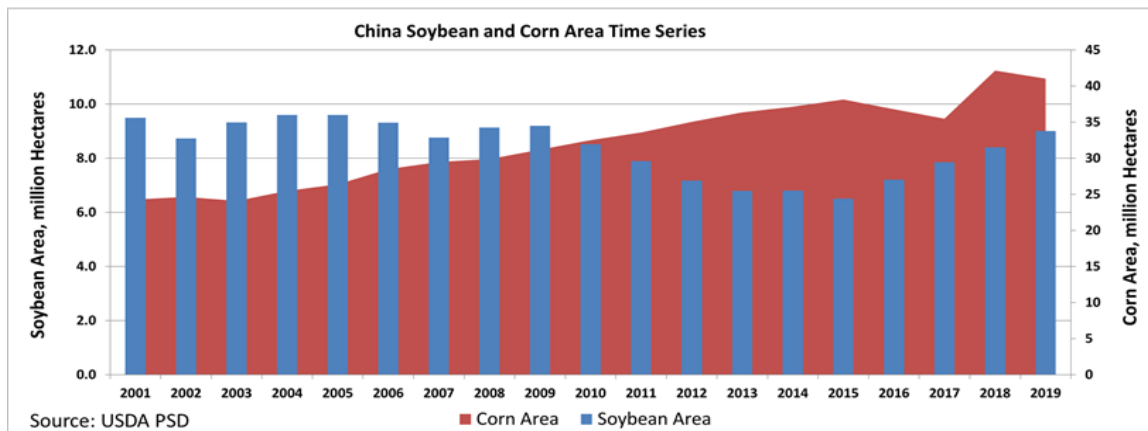


Source: Ministry of Agriculture & Rosstat

hectare, up 4 percent from last month and up 15 percent from last year. Total area is estimated at 2.45 million hectares, unchanged from last month and up 3 percent from last year. The estimated yield is increased by 4 percent based on harvest reports from the Ministry of Agriculture. Preliminary corn yields from the Ministry of Agriculture are typically higher than the final reported yield from the statistical agency Rosstat. Data from the Ministry of Agriculture indicate that harvest is about 34 percent complete as of early October. *(For more information, please contact Katie.McGaughey@usda.gov.)*

China Corn: Production Down from Last Year Due to Declining Planted Area

China Corn and Soybean Area Time Series:
Corn Area Declining and Soybean Area Increasing



Source: USDA PSD



USDA estimates China’s 2019/20 corn production at 254 million metric tons (mmt), down 1.3 percent from last year, and approximately 5 mmt below the 5-year average. The year-to-year

decline in production is attributed to a significant decrease in planted area. Area is estimated at 41 million hectares (mha), down 2.7 percent or 1.1 mha from last year. Yield is estimated at a record 6.20 tons per hectare (t/ha), up 1 percent from last year, and up 4 percent from the 5-year average of 5.98 t/ha.

China 2019/20 Corn: Good conditions, Favorable Yield Expectations



Photo courtesy of Dath Mita, FAS/IPAD, September 2019



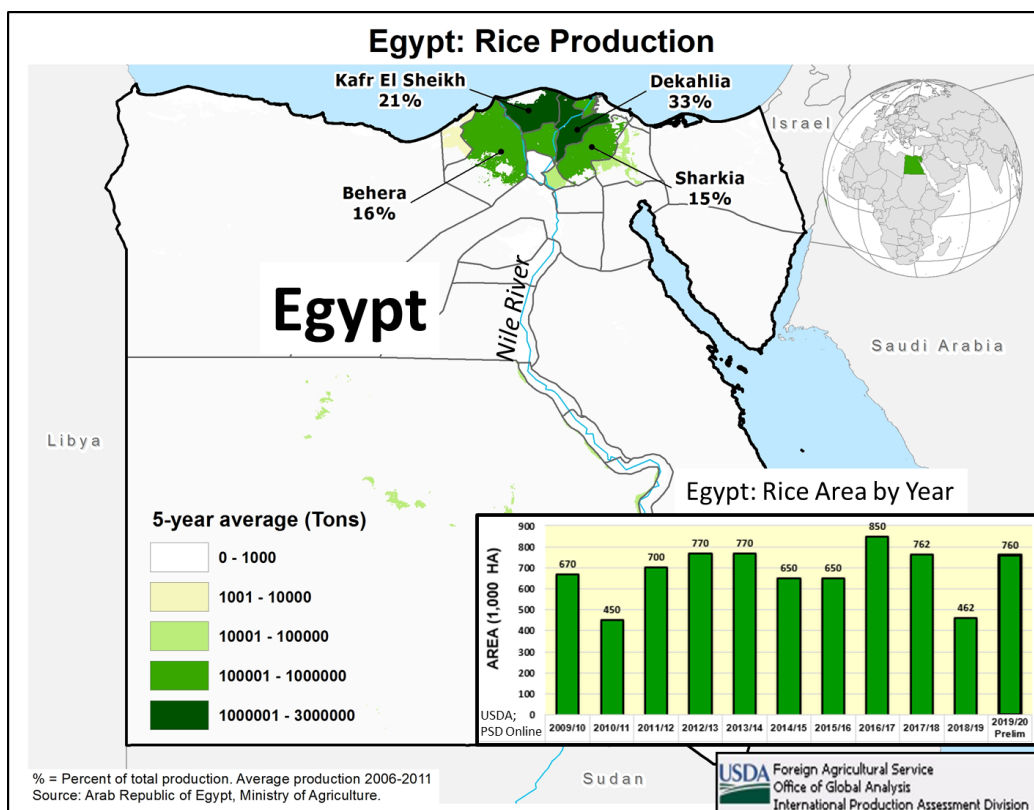
In September USDA/FAS staff visited the major corn and soybean production regions in China's northeast provinces of Liaoning, Jilin, and Heilongjiang. Field observations showed that corn area significantly declined primarily due to an increase in soybean plantings. In the past four seasons, farmers increased soybean area due to area-based soybean support. As a result, soybean area has been increasing as farmers opt to reduce corn area. Field observations also revealed that most major corn growing regions in the northeast provinces had adequate-to-abundant soil moisture during the 2019/20 season. This resulted in good growing conditions and favorable yield potential across the region. By the end of September, the corn was at physiological maturity and harvesting was in progress. (For more information, please contact Dath.Mita@usda.gov.)

Egypt Rice: Large Area Revision Bolsters Production as Farmers Risk Penalties

USDA estimates Egypt production for 2019/20 at 4.3 million metric tons (mmt) milled, or 6.2 mmt on a rough basis, up 41 percent from last month, and 54 percent from last year. Harvested area is estimated at 760,000 hectares, up 260,000 hectares or 52 percent from last month, and up 298,000 hectares from last year, or 65 percent. Yield is estimated at 8.2 tons per hectare, down 7 percent from last month and last year.

Rice area and production has risen and fallen significantly over the last 10 years. It is the most profitable grain crop for farmers, so it is their favored crop. Rice is water intensive and draws from the already burdened Nile River. The Government of Egypt has been trying to curb production of rice by setting limits on how much area is allowed. The success of the program has been limited.

Farmers weigh the perceived enforcement of penalties, such as with fines or the destruction of illegal rice fields, against the revenue of this very lucrative crop.

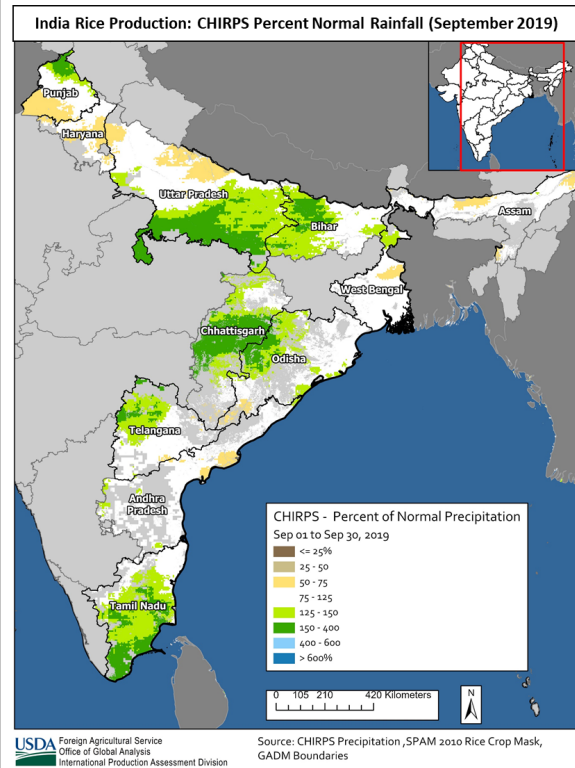
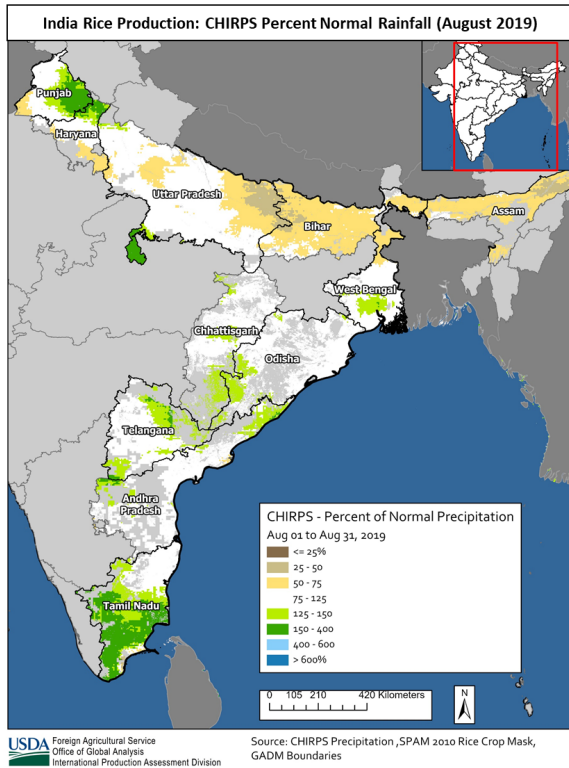


The 2019 harvest of Egypt rice is now essentially complete. New information gathered from FAS-Cairo in [Grain and Feed Update EG19015](#), was critical in revising the 2019/20 rice estimates. During the previous 2018/19 season, Egyptian farmers increased corn plantings (the primary alternative crop), in response to enhanced pressure from the government to avoid rice sowings. Farmers, however, encountered numerous problems that discouraged them from planting corn again this season. Corn is more expensive to produce, store and market than rice. Additionally, they can hold rice in paddy form for years and sell whenever prices are favorable. For these reasons, many farmers switched back to rice, despite the risk of penalties. Their decision on planting rice versus corn is largely based on the cost of the fine, which is less than what they would lose if they cultivated corn. (For more information, please contact Bryan.Purcell@usda.gov.)

India Rice: Yields Up Slightly from Last Year

USDA forecasts India rice production for 2019/20 at 114.0 million metric tons (milled basis), up nearly 2 percent from last month, but down 2 percent from last year. Harvested area is forecast at 43.0 million hectares, unchanged from last month, but down 3 percent from last year. Yield is forecast at 3.98 tons per hectare, up nearly 2 percent from last month and 1 percent from last year.

Farmers planted rice late because of the delayed monsoon. Late planted rice is benefitting from the late withdrawal of the 2019 Southwest Monsoon. Surface soil moisture in late September was above average. Consequently, NDVI analysis is showing strong crop vigor across the significant



rice-producing areas. *Kharif* rice planting ended in mid-September, which is approximately 90 percent of total rice production. *Rabi*, which accounts for roughly 10 percent of total rice, will commence in mid-October. (For more information, please contact Arnella.Trent@usda.gov.)



**World Agricultural Production
U.S. Department of Agriculture**

Foreign Agricultural Service / Office of Global Analysis
International Production Assessment Division (IPAD)
Ag Box 1051, Room 4630, South Building
Washington, DC 20250-1051

<https://ipad.fas.usda.gov/>

Telephone: (202) 720-1662 Fax: (202) 720-1158

This report uses information from the Foreign Agricultural Service’s (FAS) global network of agricultural attachés and counselors, official statistics of foreign governments and other foreign source materials, and the analysis of economic data and satellite imagery. Estimates of foreign area, yield, and production are from the International Production Assessment Division, FAS, and are reviewed by USDA’s Inter-Agency Commodity Estimates Committee. Estimates of U.S. area, yield, and production are from USDA’s National Agricultural Statistics Service. Numbers within the report may not add to totals because of rounding. This report reflects official USDA estimates released in the World Agricultural Supply and Demand Estimates (WASDE-584), October 10, 2019.

Printed copies are available from the National Technical Information Service. Download an order form at http://www.ntis.gov/products/specialty/usda/fas_a-g.asp, or call NTIS at 1-800-363-2068.

The FAS International Production Assessment Division prepared this report. The next issue of World Agricultural Production will be released after 12:00 p.m. Eastern Time November 8, 2019.

Conversion Table

Metric tons to bushels

Wheat, soybeans	=	MT * 36.7437
Corn, sorghum, rye	=	MT * 39.36825
Barley	=	MT * 45.929625
Oats	=	MT * 68.894438

Metric tons to 480-lb bales

Cotton	=	MT * 4.592917
--------	---	---------------

Metric tons to hundredweight

Rice	=	MT * 22.04622
------	---	---------------

Area & weight

1 hectare	=	2.471044 acres
1 kilogram	=	2.204622 pounds



For further information, contact:
U.S. Department of Agriculture
Foreign Agricultural Service
Office of Global Analysis
International Production Assessment Division
Ag Box 1051, Room 4630, South Building
Washington, DC 20250-1051

Telephone: (202) 720-1662

Fax: (202) 720-1158

GENERAL INFORMATION

Director	Ronald Frantz	202-720-4056	ronald.frantz@usda.gov
Deputy Director	Robert Tetrault	202-720-1071	robert.tetrault@usda.gov
Administrative Assistant	Diondra Williams	202-720-1662	diondra.williams@usda.gov
USDA Remote Sensing Advisor	Glenn Bethel	202-720-1280	glenn.bethel@usda.gov
Sr. Analyst/Technical Lead	Curt Reynolds, Ph.D.	202-690-0134	curt.reynolds@usda.gov
Sr. Analyst/ Satellite Imagery	Dath Mita, Ph.D.	202-720-7339	dath.mita@usda.gov
Archives Manager/Technical Lead			
Sr. Analyst/ Global Special	Jim Crutchfield	202-690-0135	james.crutchfield@usda.gov
Projects Manager/Technical Lead			
Sr. Analyst/Technical Lead	Vacant		
GIS Mapping/Imagery Specialist	Lisa Colson	202-720-6652	lisa.colson@usda.gov
WAP Coordinator	Ifeoma Collins	202-720-0240	ifeoma.collins@usda.gov

COUNTRY- AND REGION-SPECIFIC INFORMATION

South America, Argentina, Venezuela, and Colombia	Denise McWilliams, Ph.D.	202-720-0107	denise.mcwilliams@usda.gov
Western and Central Europe, and North Africa	Bryan Purcell	202-690-0138	bryan.purcell@usda.gov
Russia, Ukraine, Kazakhstan	Katie McGaughey	202-720-9210	katie.mcgaughey@usda.gov
South Asia, Sri Lanka	Arnella Trent	202-720-0881	arnella.trent@usda.gov
Bangladesh, India, and Nepal			
East Asia, China, and Japan	Dath Mita, Ph.D.	202-720-7339	dath.mita@usda.gov
Sub-Saharan Africa,	Curt Reynolds, Ph.D.	202-690-0134	curt.reynolds@usda.gov
Nigeria and South Africa			
S.E. Asia, Indonesia, Thailand, Malaysia, Cambodia and Vietnam	Justin Jenkins	202-720-0419	justin.jenkins@usda.gov
Central America, Mexico, and Western United States	Ifeoma Collins	202-720-0240	ifeoma.collins@usda.gov
Australia, New Zealand, Pakistan	Jim Crutchfield	202-690-0135	james.crutchfield@usda.gov
Papua New Guinea and South Pacific Islands			
Middle East, Central Asia, Afghanistan	Bill Baker, Ph.D.	202-260-8109	william.baker@usda.gov
Iraq, Iran, and Syria			
Canada, Caribbean,	Vacant		
Eastern United States			
Brazil	Maria Anulacion	202-720-6878	maria.anulacion@usda.gov



The Foreign Agricultural Service (FAS) updates its production, supply and distribution (PSD) database for cotton, oilseeds, and grains at 12:00 p.m. on the day the *World Agricultural Supply and Demand Estimates* (WASDE) report is released. This circular is released by 12:15 p.m.

FAS Reports and Databases:

Current *World Market and Trade and World Agricultural Production* Reports (Please see Data Publications):

<https://apps.fas.usda.gov/psdonline/app/index.html#/app/home>

Archives *World Market and Trade and World Agricultural Production* Reports:

https://usda.library.cornell.edu/catalog?utf8=%E2%9C%93&search_field=all_fields&q=world+agricultural+production

Production, Supply and Distribution Database (PSD Online):

<http://apps.fas.usda.gov/psdonline/psdHome.aspx>

EU Countries Area and Production (Please see Downloadable Data Sets):

<https://apps.fas.usda.gov/psdonline/app/index.html#/app/home>

Russia Wheat, Winter/Spring Area and Production (Please see Downloadable Data Sets):

<https://apps.fas.usda.gov/psdonline/app/index.html#/app/home>

Global Agricultural Trade System (U.S. Exports and Imports):

<http://apps.fas.usda.gov/gats/default.aspx>

Export Sales Report:

<http://apps.fas.usda.gov/esrquery/>

Global Agricultural Information Network (Agricultural Attaché Reports):

<http://gain.fas.usda.gov/Pages/Default.aspx>

Other USDA Reports:

World Agricultural Supply and Demand Estimates (WASDE):

<http://www.usda.gov/oce/commodity/wasde/>

Economic Research Service:

<http://www.ers.usda.gov/topics/crops>

National Agricultural Statistics Service:

<http://www.nass.usda.gov/Publications/>

Table 01 World Crop Production Summary

Million Metric Tons

Commodity	World	Total Foreign	North America			Former Soviet		European	Asia (WAP)					South America		Selected Other			All Others
			United States	Canada	Mexico	Russia	Ukraine		China	India	Indonesia	Pakistan	Thailand	Argentina	Brazil	Australia	South Africa	Turkey	
			-	-	-	-	-		-	-	-	-	-	-	-	-	-	-	
---Million metric tons---																			
Wheat																			
2017/18	762.3	714.9	47.4	30.4	3.5	85.2	27.0	nr	134.3	98.5	0.0	26.6	0.0	18.5	4.3	20.9	1.5	21.0	243.2
2018/19 prel.	730.5	679.2	51.3	32.2	3.0	71.7	25.1	nr	131.4	99.9	0.0	25.1	0.0	19.5	5.4	17.3	1.9	19.0	227.8
2019/20 proj.																			
Sep	765.5	711.6	53.9	33.3	3.2	72.5	28.7	nr	132.0	102.2	0.0	25.6	0.0	20.5	5.3	19.0	1.9	19.0	248.4
Oct	765.2	711.8	53.4	33.0	3.3	72.5	28.7	nr	132.0	102.2	0.0	25.6	0.0	20.5	5.3	18.0	1.9	19.0	249.8
Coarse Grains																			
2017/18	1,358.9	974.5	384.4	26.2	33.2	41.7	34.1	nr	265.7	46.9	11.9	6.2	5.1	39.3	85.1	12.2	13.6	12.3	341.0
2018/19 prel.	1,396.1	1,016.1	379.9	26.2	33.1	35.0	44.5	nr	265.4	42.8	12.0	6.6	5.7	59.2	104.2	10.9	12.1	13.3	345.1
2019/20 proj.																			
Sep	1,396.4	1,032.1	364.3	28.6	33.1	39.4	46.2	nr	262.5	46.0	12.7	6.6	5.3	57.7	104.2	12.0	14.6	14.3	349.1
Oct	1,396.7	1,033.0	363.7	28.6	33.1	39.9	46.2	nr	262.5	46.0	12.7	6.6	5.3	57.7	104.2	11.5	14.6	14.3	350.0
Rice, Milled																			
2017/18	494.9	489.2	5.7	0.0	0.2	0.6	0.0	nr	148.9	112.8	37.0	7.5	20.6	0.9	8.2	0.5	0.0	0.5	151.6
2018/19 prel.	499.0	491.8	7.1	0.0	0.2	0.7	0.0	nr	148.5	116.4	36.7	7.4	20.3	0.8	7.1	0.0	0.0	0.6	153.0
2019/20 proj.																			
Sep	494.2	488.3	5.9	0.0	0.2	0.7	0.0	nr	146.0	112.0	37.4	7.5	20.5	0.8	7.1	0.1	0.0	0.6	155.3
Oct	497.8	491.8	6.0	0.0	0.2	0.7	0.0	nr	146.0	114.0	37.4	7.5	20.5	0.8	7.1	0.0	0.0	0.6	156.9
Total Grains																			
2017/18	2,616.0	2,178.6	437.4	56.6	36.9	127.5	61.1	nr	548.9	258.2	48.9	40.3	25.6	58.7	97.5	33.6	15.1	33.8	735.8
2018/19 prel.	2,625.5	2,187.2	438.4	58.4	36.3	107.4	69.6	nr	545.3	259.1	48.7	39.1	26.0	79.5	116.7	28.3	14.0	32.9	725.9
2019/20 proj.																			
Sep	2,656.2	2,232.1	424.1	61.9	36.5	112.6	74.9	nr	540.5	260.1	50.1	39.7	25.8	79.0	116.7	31.1	16.5	33.9	752.8
Oct	2,659.7	2,236.6	423.0	61.6	36.6	113.1	74.9	nr	540.5	262.1	50.1	39.7	25.8	79.0	116.7	29.5	16.5	33.9	756.7
Oilseeds																			
2017/18	580.8	449.3	131.5	29.1	1.3	15.5	19.8	nr	59.6	35.4	13.8	4.0	1.0	42.5	125.8	5.4	2.6	3.2	90.4
2018/19 prel.	597.4	466.7	130.7	27.7	1.3	18.7	22.3	nr	59.9	36.5	14.1	3.8	1.0	61.0	121.9	2.9	2.0	3.5	90.2
2019/20 proj.																			
Sep	579.5	469.3	110.2	26.7	1.3	19.4	22.2	nr	61.8	37.4	14.4	3.9	1.1	58.4	127.7	2.8	2.4	3.4	86.4
Oct	574.8	466.9	107.9	26.1	1.1	19.4	21.2	nr	61.8	37.8	14.4	3.8	1.1	58.3	127.6	2.6	2.4	3.4	86.0
Cotton																			
2017/18	123.8	102.9	20.9	0.0	1.6	0.0	0.0	1.5	27.5	29.0	0.0	8.2	0.0	0.8	9.2	4.8	0.2	4.0	16.1
2018/19 prel.	119.0	100.6	18.4	0.0	1.7	0.0	0.0	1.7	27.8	26.5	0.0	7.6	0.0	1.1	12.8	2.2	0.2	3.7	15.3
2019/20 proj.																			
Sep	124.9	103.0	21.9	0.0	1.6	0.0	0.0	1.7	27.8	29.5	0.0	8.0	0.0	1.0	12.0	1.4	0.2	4.1	15.8
Oct	124.8	103.1	21.7	0.0	1.6	0.0	0.0	1.8	27.8	30.5	0.0	7.6	0.0	1.0	11.6	1.2	0.2	4.1	15.8

1/ Includes wheat, coarse grains, and rice (milled) shown above.

Table 02 Wheat Area, Yield, and Production

Country / Region	Area (Million hectares)				Yield (Metric tons per hectare)				Production (Million metric tons)				Change in Production			
	2017/18	Prel.	2019/20 Proj.		2017/18	Prel.	2019/20 Proj.		2017/18	Prel.	2019/20 Proj.		From last month		From last year	
		2018/19	Sep	Oct		2018/19	Sep	Oct		2018/19	Sep	Oct	MMT	Percent	MMT	Percent
World	218.28	215.24	218.22	218.15	3.49	3.39	3.51	3.51	762.31	730.50	765.53	765.23	-0.30	-0.04	34.73	4.75
United States	15.20	16.03	15.54	15.40	3.12	3.20	3.47	3.47	47.38	51.31	53.89	53.39	-0.50	-0.93	2.08	4.06
Total Foreign	203.09	199.21	202.68	202.75	3.52	3.41	3.51	3.51	714.93	679.19	711.64	711.84	0.20	0.03	32.65	4.81
European Union - 28	26.16	25.58	26.10	26.06	5.78	5.35	5.79	5.83	151.13	136.86	151.00	152.00	1.00	0.66	15.14	11.06
China	24.51	24.27	24.10	24.10	5.48	5.42	5.48	5.48	134.33	131.43	132.00	132.00	0.00	0.00	0.57	0.43
South Asia																
India	30.79	29.65	29.85	29.85	3.20	3.37	3.42	3.42	98.51	99.87	102.19	102.19	0.00	0.00	2.32	2.32
Pakistan	9.05	8.80	8.80	8.80	2.94	2.85	2.91	2.91	26.60	25.10	25.60	25.60	0.00	0.00	0.50	1.99
Afghanistan	2.10	2.00	2.30	2.30	2.00	1.80	2.17	2.17	4.20	3.60	5.00	5.00	0.00	0.00	1.40	38.89
Nepal	0.77	0.76	0.76	0.76	2.31	2.35	2.35	2.35	1.78	1.79	1.79	1.79	0.00	0.00	0.00	0.00
Former Soviet Union - 12																
Russia	27.37	26.34	27.00	27.00	3.11	2.72	2.69	2.69	85.17	71.69	72.50	72.50	0.00	0.00	0.82	1.14
Russia Winter	14.67	14.91	15.20	15.20	4.17	3.52	3.55	3.55	61.15	52.47	54.00	54.00	0.00	0.00	1.53	2.92
Russia Spring	12.71	11.44	11.80	11.80	1.89	1.68	1.57	1.57	24.01	19.22	18.50	18.50	0.00	0.00	-0.72	-3.72
Ukraine	6.64	6.72	7.05	7.05	4.06	3.73	4.07	4.07	26.98	25.06	28.70	28.70	0.00	0.00	3.64	14.54
Kazakhstan	11.91	11.35	11.25	11.25	1.24	1.23	1.02	1.02	14.80	13.95	11.50	11.50	0.00	0.00	-2.45	-17.54
Uzbekistan	1.44	1.40	1.40	1.40	4.79	4.29	4.86	4.86	6.90	6.00	6.80	6.80	0.00	0.00	0.80	13.33
Belarus	0.72	0.66	0.75	0.75	3.65	2.75	3.83	3.83	2.62	1.82	2.88	2.88	0.00	0.00	1.06	58.40
Canada	8.98	9.88	9.70	9.70	3.38	3.26	3.43	3.40	30.38	32.20	33.30	33.00	-0.30	-0.90	0.80	2.48
South America																
Argentina	5.80	6.05	6.30	6.30	3.19	3.22	3.25	3.25	18.50	19.50	20.50	20.50	0.00	0.00	1.00	5.13
Brazil	1.92	2.04	2.05	2.05	2.23	2.66	2.59	2.59	4.26	5.43	5.30	5.30	0.00	0.00	-0.13	-2.36
Uruguay	0.19	0.20	0.23	0.23	2.28	3.68	3.30	3.30	0.44	0.73	0.76	0.76	0.00	0.00	0.03	4.40
Australia	10.92	10.16	10.70	10.70	1.92	1.70	1.78	1.68	20.94	17.30	19.00	18.00	-1.00	-5.26	0.70	4.06
Africa																
Egypt	1.32	1.32	1.37	1.37	6.40	6.40	6.40	6.40	8.45	8.45	8.77	8.77	0.00	0.00	0.32	3.79
Morocco	3.32	2.85	2.75	2.75	2.14	2.58	1.60	1.60	7.09	7.34	4.40	4.40	0.00	0.00	-2.94	-40.05
Ethiopia	1.72	1.70	1.70	1.70	2.81	2.65	2.71	2.71	4.83	4.50	4.60	4.60	0.00	0.00	0.10	2.22
Algeria	1.60	2.07	2.10	2.10	1.50	1.90	1.90	1.90	2.40	3.94	4.00	4.00	0.00	0.00	0.06	1.52
Middle East																
Turkey	7.80	7.62	7.20	7.20	2.69	2.50	2.64	2.64	21.00	19.00	19.00	19.00	0.00	0.00	0.00	0.00
Iran	6.70	6.70	6.70	6.70	2.09	2.16	2.51	2.51	14.00	14.50	16.80	16.80	0.00	0.00	2.30	15.86
Iraq	2.20	1.70	2.40	2.40	1.82	1.76	2.00	2.00	4.00	3.00	4.80	4.80	0.00	0.00	1.80	60.00
Syria	1.10	1.10	1.60	1.60	2.00	1.82	3.00	3.00	2.20	2.00	4.80	4.80	0.00	0.00	2.80	140.00
Mexico	0.67	0.54	0.61	0.61	5.24	5.56	5.25	5.41	3.49	3.00	3.20	3.30	0.10	3.13	0.30	10.00
Serbia	0.54	0.65	0.60	0.58	4.26	4.63	4.83	4.48	2.30	3.00	2.90	2.60	-0.30	-10.34	-0.40	-13.33
Others	6.86	7.10	7.31	7.44	2.57	2.56	2.67	2.72	17.62	18.15	19.56	20.26	0.70	3.58	2.11	11.60

Table 03 Total Coarse Grain Area, Yield, and Production

Country / Region	Area (Million hectares)				Yield (Metric tons per hectare)				Production (Million metric tons)				Change in Production			
	Prel.		2019/20 Proj.		Prel.		2019/20 Proj.		Prel.		2019/20 Proj.		From last month		From last year	
	2017/18	2018/19	Sep	Oct	2017/18	2018/19	Sep	Oct	2017/18	2018/19	Sep	Oct	MMT	Percent	MMT	Percent
World	328.72	327.13	332.12	331.98	4.13	4.27	4.20	4.21	1,358.87	1,396.07	1,396.45	1,396.68	0.24	0.02	0.61	0.04
United States	36.76	36.39	36.54	36.38	10.46	10.44	9.97	10.00	384.39	379.93	364.30	363.65	-0.65	-0.18	-16.28	-4.28
Total Foreign	291.96	290.74	295.58	295.60	3.34	3.50	3.49	3.49	974.49	1,016.14	1,032.15	1,033.03	0.88	0.09	16.89	1.66
China	44.57	44.67	43.65	43.65	5.96	5.94	6.01	6.01	265.72	265.41	262.48	262.48	0.00	0.00	-2.93	-1.10
European Union	28.97	29.23	29.84	29.81	5.25	5.06	5.29	5.33	152.12	147.90	157.81	158.75	0.94	0.60	10.86	7.34
South America																
Brazil	17.83	18.69	19.33	19.33	4.77	5.58	5.39	5.39	85.06	104.18	104.23	104.23	0.00	0.00	0.05	0.05
Argentina	7.10	8.22	8.05	8.05	5.54	7.20	7.17	7.17	39.32	59.23	57.73	57.73	0.00	0.00	-1.50	-2.53
Former Soviet Union - 12																
Russia	14.59	14.03	14.28	14.28	2.86	2.50	2.76	2.79	41.72	35.00	39.38	39.88	0.50	1.27	4.88	13.94
Ukraine	7.59	7.58	8.01	8.01	4.49	5.87	5.77	5.77	34.07	44.50	46.20	46.20	0.00	0.00	1.70	3.81
Kazakhstan	2.49	2.97	3.41	3.41	1.79	1.76	1.52	1.52	4.45	5.23	5.19	5.19	0.00	0.00	-0.04	-0.80
Belarus	1.00	0.97	0.85	0.85	3.30	2.56	3.59	3.59	3.29	2.49	3.05	3.05	0.00	0.00	0.56	22.54
Africa																
Nigeria	14.57	14.30	14.40	14.40	1.33	1.39	1.38	1.38	19.44	19.92	19.90	19.90	0.00	0.00	-0.02	-0.10
South Africa	2.79	2.81	3.12	3.12	4.86	4.32	4.69	4.69	13.55	12.13	14.60	14.60	0.00	0.00	2.47	20.37
Tanzania	5.32	5.35	5.35	5.35	1.22	1.22	1.24	1.24	6.47	6.55	6.65	6.65	0.00	0.00	0.10	1.53
Burkina	3.85	3.85	3.85	3.85	0.97	1.25	1.14	1.14	3.73	4.82	4.40	4.40	0.00	0.00	-0.42	-8.69
Ethiopia	5.49	5.59	5.60	5.60	2.90	2.95	2.91	2.91	15.93	16.50	16.30	16.30	0.00	0.00	-0.20	-1.21
Egypt	1.02	1.07	1.12	1.02	7.09	7.14	7.18	7.09	7.26	7.66	8.06	7.26	-0.80	-9.93	-0.40	-5.22
Mali	4.78	4.50	4.50	4.50	1.36	1.54	1.18	1.18	6.51	6.94	5.30	5.30	0.00	0.00	-1.64	-23.58
India	24.17	22.02	23.66	23.66	1.94	1.95	1.94	1.94	46.94	42.84	45.95	45.95	0.00	0.00	3.11	7.26
Southeast Asia																
Indonesia	3.65	3.70	3.90	3.90	3.26	3.24	3.26	3.26	11.90	12.00	12.70	12.70	0.00	0.00	0.70	5.83
Philippines	2.60	2.48	2.55	2.55	3.10	3.07	3.18	3.18	8.08	7.61	8.10	8.10	0.00	0.00	0.49	6.47
Vietnam	1.04	0.95	1.00	1.00	4.72	4.80	4.85	4.85	4.91	4.56	4.85	4.85	0.00	0.00	0.29	6.36
Thailand	1.15	1.33	1.22	1.22	4.38	4.26	4.31	4.31	5.05	5.65	5.25	5.25	0.00	0.00	-0.40	-7.08
Mexico	9.07	8.92	9.21	9.21	3.66	3.71	3.59	3.59	33.19	33.11	33.10	33.10	0.00	0.00	-0.01	-0.04
Canada	4.74	5.00	5.52	5.52	5.54	5.24	5.17	5.17	26.24	26.19	28.56	28.56	0.00	0.00	2.37	9.03
Australia	5.59	5.03	5.59	5.44	2.18	2.17	2.15	2.11	12.19	10.93	12.00	11.50	-0.50	-4.17	0.56	5.14
Middle East																
Turkey	4.15	4.34	4.53	4.53	2.96	3.05	3.16	3.16	12.27	13.25	14.30	14.30	0.00	0.00	1.05	7.92
Iran	1.78	1.73	1.91	1.91	2.43	2.32	2.63	2.63	4.34	4.02	5.02	5.02	0.00	0.00	1.00	24.88
Others	72.06	71.42	71.16	71.45	1.54	1.65	1.56	1.56	110.74	117.53	111.05	111.79	0.74	0.67	-5.74	-4.89

World and Selected Countries and Regions; Coarse Grain includes: Barley, Corn, Millet, Mixed Grains, Oats, Rye and Sorghum

Table 04 Corn Area, Yield, and Production

Country / Region	Area (Million hectares)				Yield (Metric tons per hectare)				Production (Million metric tons)				Change in Production			
	2017/18	Prel.	2019/20 Proj.		2017/18	Prel.	2019/20 Proj.		2017/18	Prel.	2019/20 Proj.		From last month		From last year	
		2018/19	Sep	Oct		2018/19	Sep	Oct		2018/19	Sep	Oct	MMT	Percent	MMT	Percent
World	191.94	191.43	191.99	191.77	5.62	5.87	5.75	5.76	1,078.08	1,123.22	1,104.88	1,104.01	-0.86	-0.08	-19.21	-1.71
United States	33.48	33.08	33.19	33.11	11.08	11.07	10.56	10.57	371.10	366.29	350.52	350.01	-0.50	-0.14	-16.28	-4.44
Total Foreign	158.46	158.35	158.80	158.66	4.46	4.78	4.75	4.75	706.98	756.93	754.36	754.00	-0.36	-0.05	-2.93	-0.39
China	42.40	42.13	41.00	41.00	6.11	6.11	6.20	6.20	259.07	257.33	254.00	254.00	0.00	0.00	-3.33	-1.29
South America																
Brazil	16.60	17.50	18.10	18.10	4.94	5.77	5.58	5.58	82.00	101.00	101.00	101.00	0.00	0.00	0.00	0.00
Argentina	5.20	6.10	6.10	6.10	6.15	8.36	8.20	8.20	32.00	51.00	50.00	50.00	0.00	0.00	-1.00	-1.96
Bolivia	0.37	0.33	0.25	0.25	2.50	2.65	2.50	2.50	0.93	0.88	0.63	0.63	0.00	0.00	-0.25	-28.57
European Union	8.26	8.27	8.65	8.61	7.51	7.77	7.50	7.53	62.02	64.22	64.80	64.80	0.00	0.00	0.58	0.91
Africa																
South Africa	2.63	2.60	2.90	2.90	4.97	4.42	4.83	4.83	13.10	11.50	14.00	14.00	0.00	0.00	2.50	21.74
Nigeria	6.54	6.50	6.50	6.50	1.68	1.69	1.69	1.69	11.00	11.00	11.00	11.00	0.00	0.00	0.00	0.00
Ethiopia	2.23	2.30	2.30	2.30	3.59	3.61	3.48	3.48	8.00	8.30	8.00	8.00	0.00	0.00	-0.30	-3.61
Egypt	0.80	0.85	0.90	0.80	8.00	8.00	8.00	8.00	6.40	6.80	7.20	6.40	-0.80	-11.11	-0.40	-5.88
Tanzania	4.20	4.20	4.20	4.20	1.27	1.29	1.31	1.31	5.35	5.40	5.50	5.50	0.00	0.00	0.10	1.85
Malawi	1.73	1.70	1.70	1.70	2.01	1.65	1.94	1.94	3.46	2.80	3.30	3.30	0.00	0.00	0.50	17.86
Zambia	1.43	1.09	0.84	0.84	2.52	2.21	2.38	2.38	3.61	2.40	2.00	2.00	0.00	0.00	-0.40	-16.49
Kenya	2.09	2.20	2.00	2.00	1.52	1.82	1.60	1.60	3.19	4.00	3.20	3.20	0.00	0.00	-0.80	-20.00
Uganda	1.19	1.20	1.20	1.20	2.54	2.33	2.50	2.50	3.02	2.80	3.00	3.00	0.00	0.00	0.20	7.14
Zimbabwe	1.88	1.72	1.62	1.62	1.15	0.99	0.48	0.48	2.16	1.70	0.78	0.78	0.00	0.00	-0.92	-54.32
Former Soviet Union - 12																
Ukraine	4.43	4.57	4.90	4.90	5.44	7.84	7.35	7.35	24.12	35.81	36.00	36.00	0.00	0.00	0.20	0.54
Russia	2.69	2.37	2.45	2.45	4.90	4.81	5.31	5.51	13.20	11.42	13.00	13.50	0.50	3.85	2.09	18.27
South Asia																
India	9.38	9.20	9.50	9.50	3.07	2.96	3.05	3.05	28.75	27.23	29.00	29.00	0.00	0.00	1.77	6.50
Pakistan	1.23	1.32	1.33	1.33	4.63	4.62	4.59	4.59	5.70	6.10	6.10	6.10	0.00	0.00	0.00	0.00
Nepal	0.90	0.90	0.90	0.90	2.84	2.83	2.83	2.83	2.56	2.55	2.55	2.55	0.00	0.00	0.00	0.00
Southeast Asia																
Indonesia	3.65	3.70	3.90	3.90	3.26	3.24	3.26	3.26	11.90	12.00	12.70	12.70	0.00	0.00	0.70	5.83
Philippines	2.60	2.48	2.55	2.55	3.10	3.07	3.18	3.18	8.08	7.61	8.10	8.10	0.00	0.00	0.49	6.47
Vietnam	1.04	0.95	1.00	1.00	4.72	4.80	4.85	4.85	4.91	4.56	4.85	4.85	0.00	0.00	0.29	6.36
Thailand	1.13	1.30	1.19	1.19	4.44	4.31	4.37	4.37	5.00	5.60	5.20	5.20	0.00	0.00	-0.40	-7.14
Mexico	7.32	7.20	7.30	7.30	3.77	3.83	3.70	3.70	27.57	27.60	27.00	27.00	0.00	0.00	-0.60	-2.17
Canada	1.41	1.43	1.40	1.40	10.02	9.70	10.00	10.00	14.10	13.89	14.00	14.00	0.00	0.00	0.12	0.83
Turkey	0.53	0.53	0.52	0.52	10.00	10.75	11.06	11.06	5.30	5.70	5.75	5.75	0.00	0.00	0.05	0.88
Others	24.60	23.72	23.60	23.60	2.46	2.77	2.61	2.61	60.51	65.76	61.71	61.65	-0.06	-0.10	-4.12	-6.26

World and Selected Countries and Regions

Table 05 Barley Area, Yield, and Production

Country / Region	Area (Million hectares)				Yield (Metric tons per hectare)				Production (Million metric tons)				Change in Production						
	2017/18	Prel.		2019/20 Proj.		2017/18	Prel.		2019/20 Proj.		2017/18	Prel.		2019/20 Proj.		From last month		From last year	
		2018/19	Sep	Oct	2018/19		Sep	Oct	2018/19	Sep		Oct	MMT	Percent	MMT	Percent			
World	47.37	48.27	51.59	51.85	3.02	2.89	2.99	3.00	143.13	139.56	154.07	155.80	1.73	1.12	16.24	11.64			
United States	0.79	0.80	0.94	0.90	3.93	4.17	3.97	4.16	3.12	3.34	3.75	3.73	-0.02	-0.45	0.39	11.61			
Total Foreign	46.58	47.47	50.65	50.96	3.01	2.87	2.97	2.98	140.01	136.22	150.32	152.07	1.74	1.16	15.85	11.64			
European Union	12.10	12.32	12.38	12.38	4.85	4.53	4.91	4.98	58.65	55.85	60.70	61.64	0.94	1.56	5.80	10.38			
Former Soviet Union - 12																			
Russia	7.71	7.78	8.25	8.25	2.62	2.15	2.42	2.42	20.21	16.74	20.00	20.00	0.00	0.00	3.26	19.50			
Ukraine	2.65	2.57	2.70	2.70	3.28	2.96	3.41	3.41	8.70	7.60	9.20	9.20	0.00	0.00	1.60	20.99			
Kazakhstan	2.07	2.52	2.95	2.95	1.60	1.58	1.32	1.32	3.31	3.97	3.90	3.90	0.00	0.00	-0.07	-1.79			
Belarus	0.45	0.43	0.40	0.40	3.14	2.20	3.50	3.50	1.42	0.94	1.40	1.40	0.00	0.00	0.46	48.31			
Azerbaijan	0.32	0.32	0.32	0.32	2.55	2.72	2.72	2.72	0.82	0.87	0.87	0.87	0.00	0.00	0.00	0.00			
Canada	2.11	2.40	2.70	2.70	3.73	3.50	3.67	3.67	7.89	8.38	9.90	9.90	0.00	0.00	1.52	18.14			
Australia	4.12	3.72	4.10	4.10	2.24	2.23	2.10	2.10	9.25	8.31	8.60	8.60	0.00	0.00	0.29	3.49			
Middle East																			
Turkey	3.40	3.60	3.80	3.80	1.88	1.94	2.11	2.11	6.40	7.00	8.00	8.00	0.00	0.00	1.00	14.29			
Iran	1.60	1.55	1.70	1.70	1.94	1.81	2.12	2.12	3.10	2.80	3.60	3.60	0.00	0.00	0.80	28.57			
Iraq	0.78	0.60	1.20	1.20	1.26	1.30	1.33	1.33	0.98	0.78	1.60	1.60	0.00	0.00	0.82	105.13			
Syria	0.80	0.80	1.20	1.50	0.97	0.50	1.00	1.33	0.78	0.40	1.20	2.00	0.80	66.67	1.60	400.00			
Africa																			
Ethiopia	0.96	1.00	1.00	1.00	2.13	2.20	2.30	2.30	2.03	2.20	2.30	2.30	0.00	0.00	0.10	4.55			
Morocco	1.89	1.60	1.45	1.45	1.30	1.82	0.69	0.69	2.47	2.91	1.00	1.00	0.00	0.00	-1.91	-65.64			
Algeria	0.76	1.03	1.03	1.03	1.27	1.90	2.00	2.00	0.97	1.95	2.05	2.05	0.00	0.00	0.10	5.13			
Tunisia	0.39	0.31	0.40	0.40	1.02	0.99	1.63	1.63	0.40	0.31	0.65	0.65	0.00	0.00	0.34	109.68			
South Africa	0.09	0.12	0.12	0.12	3.37	3.55	3.54	3.54	0.31	0.42	0.43	0.43	0.00	0.00	0.00	0.71			
South America																			
Argentina	0.94	1.20	1.20	1.20	4.00	4.22	4.00	4.00	3.74	5.06	4.80	4.80	0.00	0.00	-0.26	-5.14			
Uruguay	0.15	0.15	0.17	0.17	2.52	3.83	3.82	3.82	0.39	0.58	0.63	0.63	0.00	0.00	0.06	9.57			
Brazil	0.11	0.11	0.12	0.12	2.61	3.16	3.02	3.02	0.28	0.35	0.35	0.35	0.00	0.00	0.00	-1.13			
India	0.66	0.66	0.66	0.66	2.66	2.69	2.64	2.64	1.75	1.78	1.75	1.75	0.00	0.00	-0.03	-1.74			
China	0.33	0.45	0.47	0.47	3.29	4.11	4.15	4.15	1.09	1.85	1.95	1.95	0.00	0.00	0.10	5.41			
Mexico	0.36	0.35	0.36	0.36	2.81	2.82	2.81	2.81	1.01	1.00	1.01	1.01	0.00	0.00	0.01	1.41			
Afghanistan	0.07	0.06	0.18	0.18	1.40	0.95	1.39	1.39	0.10	0.06	0.25	0.25	0.00	0.00	0.19	338.60			
Others	1.76	1.83	1.81	1.81	2.27	2.25	2.32	2.32	4.00	4.11	4.19	4.19	0.00	0.00	0.08	1.92			

World and Selected Countries and Regions

Table 06 Oats Area, Yield, and Production

Country / Region	Area (Million hectares)				Yield (Metric tons per hectare)				Production (Million metric tons)				Change in Production			
	2017/18	Prel.	2019/20 Proj.		2017/18	Prel.	2019/20 Proj.		2017/18	Prel.	2019/20 Proj.		From last month		From last year	
		2018/19	Sep	Oct		2018/19	Sep	Oct		2018/19	Sep	Oct	MMT	Percent	MMT	Percent
World	9.87	9.71	9.46	9.38	2.40	2.26	2.42	2.41	23.70	21.92	22.91	22.62	-0.29	-1.26	0.70	3.19
United States	0.33	0.35	0.37	0.34	2.22	2.33	2.38	2.31	0.72	0.82	0.88	0.79	-0.09	-10.16	-0.03	-3.44
Total Foreign	9.54	9.36	9.09	9.04	2.41	2.25	2.42	2.42	22.98	21.10	22.03	21.83	-0.20	-0.91	0.73	3.45
European Union	2.67	2.71	2.60	2.60	3.02	2.85	3.12	3.12	8.06	7.72	8.10	8.10	0.00	0.00	0.38	4.93
Former Soviet Union - 12																
Russia	2.78	2.73	2.40	2.40	1.96	1.73	1.79	1.79	5.45	4.72	4.30	4.30	0.00	0.00	-0.42	-8.80
Ukraine	0.21	0.20	0.18	0.18	2.31	2.14	2.39	2.39	0.48	0.42	0.43	0.43	0.00	0.00	0.01	1.65
Belarus	0.15	0.15	0.15	0.15	3.33	2.26	3.00	3.00	0.50	0.34	0.45	0.45	0.00	0.00	0.11	31.58
Kazakhstan	0.21	0.24	0.24	0.24	1.34	1.43	1.45	1.45	0.29	0.34	0.34	0.34	0.00	0.00	0.00	1.19
Canada	1.05	1.01	1.20	1.20	3.55	3.42	3.33	3.33	3.73	3.44	4.00	4.00	0.00	0.00	0.56	16.41
South America																
Argentina	0.22	0.24	0.14	0.14	2.24	2.40	2.59	2.59	0.49	0.57	0.35	0.35	0.00	0.00	-0.22	-38.81
Brazil	0.34	0.38	0.38	0.38	1.86	2.11	2.17	2.17	0.63	0.80	0.83	0.83	0.00	0.00	0.03	3.77
Chile	0.11	0.08	0.07	0.07	5.31	5.13	5.50	5.50	0.57	0.39	0.39	0.39	0.00	0.00	0.00	0.00
Uruguay	0.03	0.03	0.01	0.01	1.52	2.04	1.86	1.86	0.04	0.05	0.03	0.03	0.00	0.00	-0.03	-50.94
Oceania																
Australia	0.87	0.68	0.75	0.70	1.40	1.31	1.60	1.43	1.23	0.89	1.20	1.00	-0.20	-16.67	0.11	12.61
New Zealand	0.01	0.01	0.01	0.01	5.83	5.00	5.50	5.50	0.04	0.03	0.03	0.03	0.00	0.00	0.01	32.00
China	0.48	0.50	0.53	0.53	1.16	1.15	1.19	1.19	0.55	0.58	0.63	0.63	0.00	0.00	0.05	8.70
Africa																
Algeria	0.09	0.09	0.09	0.09	1.29	1.29	1.29	1.29	0.11	0.11	0.11	0.11	0.00	0.00	0.00	0.00
Morocco	0.03	0.05	0.05	0.05	1.17	1.40	0.89	0.89	0.04	0.06	0.04	0.04	0.00	0.00	-0.02	-36.51
South Africa	0.02	0.02	0.03	0.03	1.53	1.65	1.60	1.60	0.02	0.03	0.04	0.04	0.00	0.00	0.01	21.21
Other Europe																
Norway	0.07	0.07	0.07	0.07	4.16	2.09	4.29	4.29	0.28	0.14	0.30	0.30	0.00	0.00	0.16	108.33
Serbia	0.03	0.03	0.03	0.03	2.17	2.17	2.17	2.17	0.07	0.07	0.07	0.07	0.00	0.00	0.00	0.00
Albania	0.02	0.01	0.01	0.01	2.27	2.08	2.14	2.14	0.03	0.03	0.03	0.03	0.00	0.00	0.00	11.11
Bosnia and Herzegovina	0.01	0.01	0.01	0.01	2.73	2.79	3.00	3.00	0.03	0.04	0.04	0.04	0.00	0.00	0.00	7.69
Turkey	0.11	0.10	0.10	0.10	2.21	2.30	2.30	2.30	0.25	0.23	0.23	0.23	0.00	0.00	0.00	0.00
Mexico	0.04	0.05	0.05	0.05	1.64	2.06	1.80	1.80	0.07	0.10	0.09	0.09	0.00	0.00	-0.01	-12.62
Others	0.01	0.02	0.01	0.01	1.79	2.00	1.86	1.86	0.03	0.03	0.03	0.03	0.00	0.00	0.00	-13.33

World and Selected Countries and Regions

Table 07 Rye Area, Yield, and Production

Country / Region	Area (Million hectares)				Yield (Metric tons per hectare)				Production (Million metric tons)				Change in Production			
	2017/18	Prel.	2019/20 Proj.		2017/18	Prel.	2019/20 Proj.		2017/18	Prel.	2019/20 Proj.		From last month		From last year	
		2018/19	Sep	Oct		2018/19	Sep	Oct		2018/19	Sep	Oct	MMT	Percent	MMT	Percent
World	4.02	3.73	3.72	3.72	3.06	2.68	3.16	3.17	12.31	9.99	11.74	11.78	0.04	0.35	1.79	17.90
United States	0.12	0.11	0.12	0.13	2.15	1.95	1.89	2.16	0.26	0.21	0.23	0.27	0.04	17.90	0.06	26.17
Total Foreign	3.90	3.62	3.60	3.60	3.09	2.70	3.20	3.20	12.05	9.78	11.51	11.51	0.00	0.00	1.73	17.72
European Union	1.93	1.92	2.07	2.07	3.83	3.23	3.86	3.86	7.41	6.20	8.00	8.00	0.00	0.00	1.80	29.03
Former Soviet Union - 12																
Russia	1.17	0.96	0.83	0.83	2.17	2.00	1.94	1.94	2.54	1.91	1.60	1.60	0.00	0.00	-0.31	-16.41
Belarus	0.26	0.25	0.20	0.20	2.62	2.00	3.25	3.25	0.67	0.50	0.65	0.65	0.00	0.00	0.15	29.22
Ukraine	0.17	0.15	0.11	0.11	2.97	2.66	2.73	2.73	0.51	0.40	0.30	0.30	0.00	0.00	-0.10	-24.24
Kazakhstan	0.03	0.02	0.02	0.02	1.26	1.05	1.25	1.25	0.04	0.02	0.03	0.03	0.00	0.00	0.00	8.70
Turkey	0.10	0.11	0.11	0.11	3.17	2.91	2.91	2.91	0.32	0.32	0.32	0.32	0.00	0.00	0.00	0.00
Canada	0.10	0.08	0.13	0.13	3.39	2.99	3.08	3.08	0.34	0.24	0.40	0.40	0.00	0.00	0.16	69.49
South America																
Chile	0.00	0.00	0.00	0.00	5.00	5.00	5.00	5.00	0.01	0.01	0.01	0.01	0.00	0.00	0.00	0.00
Argentina	0.05	0.05	0.04	0.04	1.91	1.78	2.14	2.14	0.09	0.09	0.08	0.08	0.00	0.00	-0.01	-13.79
Other Europe																
Bosnia and Herzegovina	0.00	0.00	0.00	0.00	3.67	2.75	3.50	3.50	0.01	0.01	0.01	0.01	0.00	0.00	0.00	27.27
Switzerland	0.00	0.00	0.00	0.00	5.50	5.50	5.50	5.50	0.01	0.01	0.01	0.01	0.00	0.00	0.00	0.00
Serbia	0.00	0.00	0.00	0.00	2.50	2.50	2.50	2.50	0.01	0.01	0.01	0.01	0.00	0.00	0.00	0.00
Australia	0.04	0.04	0.04	0.04	0.75	0.68	0.68	0.68	0.03	0.03	0.03	0.03	0.00	0.00	0.00	0.00
Others	0.04	0.03	0.04	0.04	1.84	1.00	1.87	1.87	0.07	0.03	0.07	0.07	0.00	0.00	0.04	121.88

World and Selected Countries and Regions

Table 08 Sorghum Area, Yield, and Production

Country / Region	Area (Million hectares)				Yield (Metric tons per hectare)				Production (Million metric tons)				Change in Production			
	Prel.		2019/20 Proj.		Prel.		2019/20 Proj.		Prel.		2019/20 Proj.		From last month		From last year	
	2017/18	2018/19	Sep	Oct	2017/18	2018/19	Sep	Oct	2017/18	2018/19	Sep	Oct	MMT	Percent	MMT	Percent
World	40.28	39.86	41.07	40.96	1.43	1.48	1.44	1.44	57.69	59.00	59.17	58.80	-0.38	-0.64	-0.20	-0.34
United States	2.04	2.05	1.92	1.91	4.50	4.53	4.66	4.64	9.19	9.27	8.93	8.86	-0.08	-0.85	-0.42	-4.49
Total Foreign	38.24	37.81	39.15	39.05	1.27	1.32	1.28	1.28	48.50	49.73	50.24	49.94	-0.30	-0.60	0.22	0.43
Africa																
Nigeria	5.82	5.80	5.90	5.90	1.19	1.17	1.17	1.17	6.94	6.80	6.90	6.90	0.00	0.00	0.10	1.47
Ethiopia	1.84	1.84	1.85	1.85	2.62	2.72	2.70	2.70	4.82	5.00	5.00	5.00	0.00	0.00	0.00	0.00
Sudan	6.30	7.00	7.00	7.00	0.59	0.64	0.57	0.57	3.74	4.50	4.00	4.00	0.00	0.00	-0.50	-11.11
Burkina	1.67	1.80	1.80	1.80	0.82	1.07	1.00	1.00	1.37	1.93	1.80	1.80	0.00	0.00	-0.13	-6.74
Mali	1.39	1.50	1.50	1.50	1.03	0.98	0.87	0.87	1.42	1.47	1.30	1.30	0.00	0.00	-0.17	-11.56
Niger	3.82	3.70	3.70	3.70	0.51	0.57	0.49	0.49	1.95	2.10	1.80	1.80	0.00	0.00	-0.30	-14.29
Cameroon	0.85	0.85	0.85	0.85	1.59	1.65	1.65	1.65	1.35	1.40	1.40	1.40	0.00	0.00	0.00	0.00
Tanzania	0.78	0.80	0.80	0.80	1.02	1.00	1.00	1.00	0.80	0.80	0.80	0.80	0.00	0.00	0.00	0.00
Egypt	0.14	0.14	0.14	0.14	5.36	5.36	5.36	5.36	0.75	0.75	0.75	0.75	0.00	0.00	0.00	0.00
Uganda	0.42	0.35	0.35	0.35	0.75	0.97	0.97	0.97	0.32	0.34	0.34	0.34	0.00	0.00	0.00	0.00
Ghana	0.25	0.25	0.25	0.25	1.11	1.26	1.12	1.12	0.28	0.32	0.28	0.28	0.00	0.00	-0.04	-11.39
Mozambique	0.21	0.20	0.20	0.20	1.19	1.32	0.90	0.90	0.25	0.26	0.18	0.18	0.00	0.00	-0.08	-31.56
South Africa	0.03	0.05	0.05	0.05	3.97	3.40	2.60	2.60	0.12	0.17	0.13	0.13	0.00	0.00	-0.04	-23.53
Mexico	1.35	1.32	1.50	1.50	3.37	3.34	3.33	3.33	4.55	4.42	5.00	5.00	0.00	0.00	0.59	13.25
South America																
Argentina	0.70	0.63	0.58	0.58	4.29	3.97	4.35	4.35	3.00	2.50	2.50	2.50	0.00	0.00	0.00	0.00
Brazil	0.78	0.69	0.73	0.73	2.73	2.92	2.83	2.83	2.14	2.02	2.05	2.05	0.00	0.00	0.03	1.43
South Asia																
India	5.02	4.01	5.00	5.00	0.96	0.94	0.90	0.90	4.80	3.76	4.50	4.50	0.00	0.00	0.74	19.68
Pakistan	0.26	0.24	0.24	0.24	0.60	0.59	0.58	0.58	0.15	0.14	0.14	0.14	0.00	0.00	0.00	0.00
China	0.51	0.72	0.75	0.75	4.87	4.79	4.80	4.80	2.47	3.45	3.60	3.60	0.00	0.00	0.15	4.35
Australia	0.46	0.50	0.60	0.50	2.72	2.58	2.83	2.80	1.26	1.28	1.70	1.40	-0.30	-17.65	0.12	9.55
European Union	0.12	0.14	0.15	0.15	5.32	5.51	5.43	5.43	0.66	0.74	0.82	0.82	0.00	0.00	0.07	9.54
Others	5.52	5.28	5.22	5.22	0.98	1.06	1.01	1.01	5.39	5.58	5.26	5.26	0.00	0.00	-0.32	-5.79

World and Selected Countries and Regions

Table 09 Rice Area, Yield, and Production
World and Selected Countries and Regions

Country / Region	Area (Million hectares)				Yield (Metric tons per hectare)				Production (Million metric tons)				Change in Production			
	2017/18	Prel.	2019/20 Proj.		2017/18	Prel.	2019/20 Proj.		2017/18	Prel.	2019/20 Proj.		From last month		From last year	
		2018/19	Sep	Oct		2018/19	Sep	Oct		2018/19	Sep	Oct	MMT	Percent	MMT	Percent
World	162.08	163.43	162.09	162.34	4.56	4.56	4.55	4.58	494.86	498.95	494.22	497.77	3.55	0.72	-1.18	-0.24
United States	0.96	1.18	1.00	1.00	8.41	8.62	8.48	8.54	5.66	7.12	5.95	5.99	0.04	0.71	-1.13	-15.86
Total Foreign	161.12	162.25	161.09	161.34	4.53	4.53	4.53	4.56	489.20	491.83	488.27	491.78	3.51	0.72	-0.05	-0.01
East Asia																
China	30.75	30.19	30.00	30.00	6.92	7.03	6.95	6.95	148.87	148.49	146.00	146.00	0.00	0.00	-2.49	-1.68
Japan	1.56	1.55	1.55	1.55	6.87	6.79	6.82	6.93	7.79	7.66	7.70	7.80	0.10	1.30	0.14	1.87
Korea, South	0.76	0.74	0.73	0.73	7.01	6.99	7.07	7.07	3.97	3.87	3.88	3.88	0.00	0.00	0.01	0.31
Korea, North	0.48	0.50	0.50	0.50	5.09	4.18	4.18	4.18	1.57	1.36	1.36	1.36	0.00	0.00	0.00	0.00
South Asia																
India	42.90	44.50	43.00	43.00	3.94	3.92	3.91	3.98	112.76	116.42	112.00	114.00	2.00	1.79	-2.42	-2.08
Bangladesh	11.27	11.77	11.83	11.83	4.35	4.46	4.48	4.50	32.65	35.00	35.30	35.50	0.20	0.57	0.50	1.43
Pakistan	2.80	2.88	2.90	2.90	4.02	3.85	3.88	3.88	7.50	7.40	7.50	7.50	0.00	0.00	0.10	1.35
Nepal	1.49	1.50	1.50	1.50	3.34	3.73	3.53	3.53	3.31	3.73	3.53	3.53	0.00	0.00	-0.20	-5.36
Sri Lanka	0.77	1.10	1.00	1.00	4.30	3.96	4.50	4.50	2.25	2.96	3.06	3.06	0.00	0.00	0.10	3.38
Southeast Asia																
Indonesia	12.25	12.10	12.25	12.25	4.76	4.78	4.81	4.81	37.00	36.70	37.40	37.40	0.00	0.00	0.70	1.91
Vietnam	7.65	7.67	7.67	7.67	5.79	5.83	5.91	5.91	27.66	27.92	28.30	28.30	0.00	0.00	0.38	1.35
Thailand	10.76	10.83	10.90	10.90	2.90	2.85	2.85	2.85	20.58	20.34	20.50	20.50	0.00	0.00	0.16	0.79
Burma	7.10	7.10	7.10	7.10	2.90	2.90	2.93	2.93	13.20	13.18	13.30	13.30	0.00	0.00	0.13	0.95
Philippines	4.84	4.74	4.85	4.85	4.01	3.93	3.99	3.99	12.24	11.73	12.20	12.20	0.00	0.00	0.47	3.99
Cambodia	3.18	3.19	3.19	3.19	2.86	2.89	2.92	2.92	5.55	5.63	5.69	5.69	0.00	0.00	0.06	0.98
Laos	0.96	0.82	0.99	0.99	3.30	3.25	3.30	3.30	2.00	1.68	2.05	2.05	0.00	0.00	0.37	22.02
Malaysia	0.70	0.70	0.70	0.70	4.03	4.01	4.01	4.01	1.82	1.83	1.83	1.83	0.00	0.00	0.00	0.00
South America																
Brazil	1.97	1.70	1.68	1.68	6.12	6.18	6.25	6.25	8.20	7.14	7.14	7.14	0.00	0.00	0.00	0.00
Peru	0.42	0.44	0.44	0.44	7.20	7.16	7.33	7.33	2.10	2.15	2.20	2.20	0.00	0.00	0.05	2.33
Africa																
Egypt	0.76	0.46	0.50	0.76	8.18	8.78	8.84	8.20	4.30	2.80	3.05	4.30	1.25	40.98	1.50	53.57
Madagascar	1.43	1.50	1.50	1.50	2.18	2.67	2.80	2.80	1.98	2.56	2.69	2.69	0.00	0.00	0.13	5.00
Nigeria	3.60	3.60	3.60	3.60	2.06	2.11	2.16	2.16	4.66	4.79	4.90	4.90	0.00	0.00	0.11	2.34
European Union	0.43	0.41	0.42	0.42	6.71	6.76	6.89	6.89	2.01	1.94	2.01	2.01	0.00	0.00	0.07	3.45
Iran	0.57	0.58	0.58	0.58	5.33	5.25	5.25	5.25	2.01	1.99	1.99	1.99	0.00	0.00	0.00	0.00
Others	11.73	11.69	11.73	11.73	3.01	2.94	2.95	2.94	23.22	22.57	22.70	22.66	-0.04	-0.17	0.09	0.41

Yield is on a rough basis, before the milling process. Production is on a milled basis, after the milling process.

Table 10 Total Oilseed Area, Yield, and Production
World and Selected Countries and Regions

Country / Region	Area (Million hectares)				Yield (Metric tons per hectare)				Production (Million metric tons)				Change in Production			
	Prel.		2019/20 Proj.		Prel.		2019/20 Proj.		Prel.		2019/20 Proj.		From last month		From last year	
	2017/18	2018/19	Sep	Oct	2017/18	2018/19	Sep	Oct	2017/18	2018/19	Sep	Oct	MMT	Percent	MMT	Percent
World Total	--	--	--	--	--	--	--	--	580.78	597.41	579.48	574.85	-4.64	-0.80	-22.57	-3.78
Total Foreign	--	--	--	--	--	--	--	--	449.30	466.70	469.30	466.92	-2.38	-0.51	0.22	0.05
Oilseed, Copra	--	--	--	--	--	--	--	--	5.94	5.98	5.81	5.81	0.00	0.00	-0.17	-2.84
Oilseed, Palm Kernel	--	--	--	--	--	--	--	--	18.76	19.50	20.05	20.05	0.00	0.00	0.56	2.86
Major Oilseeds	247.16	248.20	244.02	243.88	2.25	2.30	2.27	2.25	556.09	571.94	553.62	548.98	-4.64	-0.84	-22.95	-4.01
United States	42.80	41.42	37.67	37.57	3.07	3.16	2.92	2.87	131.48	130.72	110.18	107.93	-2.25	-2.04	-22.79	-17.43
Foreign Oilseeds	204.36	206.79	206.35	206.32	2.08	2.13	2.15	2.14	424.60	441.22	443.44	441.06	-2.38	-0.54	-0.16	-0.04
South America	61.58	63.39	65.11	65.00	2.97	3.12	3.10	3.11	183.13	197.77	202.10	201.84	-0.26	-0.13	4.07	2.06
Brazil	36.56	37.73	38.69	38.64	3.44	3.23	3.30	3.30	125.68	121.72	127.60	127.47	-0.13	-0.10	5.75	4.72
Argentina	18.70	19.20	20.00	19.94	2.27	3.18	2.92	2.92	42.52	61.00	58.44	58.32	-0.13	-0.22	-2.68	-4.40
Paraguay	3.47	3.78	3.67	3.67	2.99	2.37	2.81	2.81	10.39	8.97	10.31	10.31	0.00	0.00	1.34	14.97
Bolivia	1.53	1.52	1.58	1.58	1.77	1.83	1.90	1.90	2.71	2.78	3.00	3.00	0.00	0.00	0.22	7.91
Uruguay	1.15	1.02	1.01	1.01	1.23	2.86	2.28	2.28	1.41	2.92	2.30	2.30	0.00	0.00	-0.62	-21.18
China	24.08	24.18	24.90	24.90	2.48	2.48	2.48	2.48	59.60	59.88	61.83	61.83	0.00	0.00	1.95	3.26
South Asia	38.34	38.96	39.06	39.26	1.02	1.02	1.05	1.05	39.02	39.90	40.95	41.20	0.25	0.61	1.30	3.26
India	34.87	35.85	35.73	35.93	0.99	1.00	1.02	1.03	34.64	35.73	36.59	37.02	0.43	1.16	1.29	3.60
Pakistan	3.11	2.75	2.98	2.98	1.27	1.37	1.32	1.27	3.96	3.75	3.94	3.77	-0.17	-4.42	0.01	0.32
European Union	12.41	12.39	11.18	11.18	2.85	2.64	2.73	2.69	35.34	32.76	30.55	30.11	-0.43	-1.42	-2.65	-8.08
Former Soviet Union - 12	24.37	25.48	25.28	25.28	1.66	1.80	1.83	1.79	40.45	45.73	46.22	45.22	-1.00	-2.16	-0.51	-1.12
Russia	10.66	12.18	12.40	12.40	1.45	1.54	1.56	1.56	15.48	18.73	19.40	19.40	0.00	0.00	0.67	3.60
Ukraine	9.57	9.23	9.03	9.03	2.07	2.42	2.46	2.35	19.81	22.31	22.20	21.20	-1.00	-4.50	-1.11	-4.98
Uzbekistan	1.25	1.10	1.05	1.05	1.21	1.17	1.12	1.12	1.51	1.28	1.18	1.18	0.00	0.00	-0.11	-8.42
Canada	12.23	11.69	10.72	10.72	2.38	2.37	2.49	2.43	29.10	27.67	26.65	26.05	-0.60	-2.25	-1.62	-5.84
Africa	21.35	22.14	21.66	21.66	0.99	1.03	0.96	0.96	21.23	22.85	20.70	20.70	0.00	0.00	-2.15	-9.40
Nigeria	4.09	4.09	4.07	4.07	1.31	1.36	1.16	1.16	5.34	5.58	4.70	4.70	0.00	0.00	-0.88	-15.70
South Africa	1.48	1.31	1.51	1.51	1.73	1.51	1.57	1.57	2.55	1.98	2.37	2.37	0.00	0.00	0.40	20.00
Tanzania	1.35	1.50	1.50	1.50	0.89	0.86	0.85	0.85	1.20	1.29	1.28	1.28	0.00	0.00	-0.01	-0.86
Southeast Asia	3.22	3.19	3.15	3.15	1.40	1.39	1.39	1.39	4.52	4.43	4.39	4.39	0.00	0.00	-0.05	-1.08
Indonesia	1.00	0.98	0.95	0.95	1.61	1.57	1.58	1.58	1.62	1.55	1.50	1.50	0.00	0.00	-0.05	-2.91
Burma	1.88	1.88	1.88	1.88	1.19	1.18	1.18	1.18	2.24	2.22	2.21	2.21	0.00	0.00	-0.01	-0.27
Australia	3.76	2.33	2.16	2.13	1.44	1.25	1.30	1.25	5.43	2.92	2.81	2.65	-0.16	-5.70	-0.28	-9.48
Turkey	1.25	1.33	1.38	1.38	2.53	2.63	2.48	2.48	3.17	3.49	3.43	3.43	0.01	0.15	-0.06	-1.58
Others	1.77	1.73	1.76	1.66	2.04	2.21	2.18	2.19	3.62	3.82	3.83	3.64	-0.19	-4.94	-0.18	-4.71

World Total and Total Foreign: (Major Oilseeds plus copra and palm kernel) Major Oilseeds: (soybeans, sunflowerseeds, peanuts(inshell), cottonseed and rapeseed)

Table 11 Soybean Area, Yield, and Production

Country / Region	Area (Million hectares)				Yield (Metric tons per hectare)				Production (Million metric tons)				Change in Production			
	Prel.		2019/20 Proj.		Prel.		2019/20 Proj.		Prel.		2019/20 Proj.		From last month		From last year	
	2017/18	2018/19	Sep	Oct	2017/18	2018/19	Sep	Oct	2017/18	2018/19	Sep	Oct	MMT	Percent	MMT	Percent
World	124.59	125.14	122.66	122.57	2.74	2.87	2.78	2.77	341.62	358.77	341.39	338.97	-2.42	-0.71	-19.80	-5.52
United States	36.24	35.45	30.70	30.61	3.31	3.40	3.22	3.16	120.07	120.52	98.87	96.62	-2.24	-2.27	-23.89	-19.82
Total Foreign	88.36	89.70	91.96	91.86	2.51	2.66	2.64	2.64	221.55	238.26	242.52	242.35	-0.18	-0.07	4.09	1.72
South America																
Brazil	35.15	35.90	36.90	36.90	3.47	3.26	3.33	3.33	122.00	117.00	123.00	123.00	0.00	0.00	6.00	5.13
Argentina	16.30	16.60	17.50	17.50	2.32	3.33	3.03	3.03	37.80	55.30	53.00	53.00	0.00	0.00	-2.30	-4.16
Paraguay	3.40	3.70	3.60	3.60	3.03	2.39	2.83	2.83	10.30	8.85	10.20	10.20	0.00	0.00	1.35	15.25
Bolivia	1.40	1.40	1.45	1.45	1.86	1.93	2.00	2.00	2.60	2.70	2.90	2.90	0.00	0.00	0.20	7.41
Uruguay	1.10	0.97	0.95	0.95	1.21	2.93	2.32	2.32	1.33	2.83	2.20	2.20	0.00	0.00	-0.63	-22.21
East Asia																
China	8.25	8.40	9.00	9.00	1.85	1.89	1.90	1.90	15.28	15.90	17.10	17.10	0.00	0.00	1.20	7.55
Korea, South	0.05	0.05	0.05	0.05	1.87	1.75	1.80	1.80	0.09	0.09	0.09	0.09	0.00	0.00	0.00	3.37
Korea, North	0.15	0.15	0.15	0.15	1.49	1.50	1.50	1.50	0.22	0.23	0.23	0.23	0.00	0.00	0.00	0.00
Japan	0.15	0.15	0.15	0.15	1.66	1.45	1.69	1.69	0.25	0.21	0.25	0.25	0.00	0.00	0.04	18.78
India	10.40	11.00	11.00	11.00	0.80	1.05	1.00	1.00	8.35	11.50	11.00	11.00	0.00	0.00	-0.50	-4.35
Canada	2.94	2.54	2.30	2.30	2.63	2.86	2.83	2.83	7.72	7.27	6.50	6.50	0.00	0.00	-0.77	-10.55
Former Soviet Union - 12																
Russia	2.57	2.74	2.90	2.90	1.41	1.47	1.48	1.48	3.62	4.03	4.30	4.30	0.00	0.00	0.27	6.78
Ukraine	1.98	1.73	1.55	1.55	1.97	2.58	2.32	2.32	3.89	4.46	3.60	3.60	0.00	0.00	-0.86	-19.30
European Union	0.93	0.93	0.91	0.91	2.74	2.88	2.86	2.86	2.54	2.66	2.60	2.60	0.00	0.00	-0.06	-2.40
Southeast Asia																
Indonesia	0.42	0.41	0.40	0.40	1.29	1.27	1.28	1.28	0.54	0.52	0.51	0.51	0.00	0.00	-0.01	-1.92
Vietnam	0.06	0.05	0.05	0.05	1.50	1.53	1.52	1.52	0.09	0.08	0.08	0.08	0.00	0.00	-0.01	-6.17
Thailand	0.04	0.04	0.03	0.03	1.57	1.57	1.53	1.53	0.06	0.06	0.05	0.05	0.00	0.00	0.00	-5.45
Burma	0.15	0.15	0.15	0.15	1.07	1.07	1.07	1.07	0.16	0.16	0.16	0.16	0.00	0.00	0.00	0.00
Serbia	0.20	0.22	0.22	0.22	2.30	2.84	2.73	2.73	0.46	0.63	0.60	0.60	0.00	0.00	-0.03	-4.00
Mexico	0.26	0.19	0.24	0.14	1.65	1.75	1.69	1.57	0.43	0.34	0.40	0.22	-0.18	-45.00	-0.12	-34.33
Africa																
South Africa	0.79	0.73	0.80	0.80	1.96	1.60	1.81	1.81	1.54	1.17	1.45	1.45	0.00	0.00	0.28	23.93
Nigeria	1.00	1.00	1.00	1.00	0.99	1.05	1.10	1.10	0.99	1.05	1.10	1.10	0.00	0.00	0.05	4.36
Zambia	0.23	0.19	0.20	0.20	1.56	1.58	1.43	1.43	0.35	0.30	0.28	0.28	0.00	0.00	-0.02	-7.26
Uganda	0.05	0.05	0.05	0.05	0.60	0.60	0.60	0.60	0.03	0.03	0.03	0.03	0.00	0.00	0.00	0.00
Middle East																
Iran	0.08	0.07	0.07	0.07	2.41	2.29	2.43	2.43	0.20	0.16	0.17	0.17	0.00	0.00	0.01	6.25
Turkey	0.02	0.03	0.03	0.03	3.75	3.80	3.70	3.89	0.09	0.10	0.10	0.11	0.01	5.00	0.01	10.53
Others	0.32	0.32	0.32	0.32	1.95	1.99	1.97	1.97	0.62	0.64	0.62	0.62	0.00	0.00	-0.02	-3.11

World and Selected Countries and Regions

Table 12 Cottonseed Area, Yield, and Production

Country / Region	Area (Million hectares)				Yield (Metric tons per hectare)				Production (Million metric tons)				Change in Production			
	2017/18	Prel.	2019/20 Proj.		2017/18	Prel.	2019/20 Proj.		2017/18	Prel.	2019/20 Proj.		From last month		From last year	
		2018/19	Sep	Oct		2018/19	Sep	Oct		2018/19	Sep	Oct	MMT	Percent	MMT	Percent
World	33.10	32.88	33.99	34.11	1.36	1.33	1.34	1.34	45.15	43.62	45.59	45.62	0.03	0.06	1.99	4.57
United States	4.49	4.13	5.06	5.06	1.30	1.24	1.21	1.21	5.83	5.11	6.14	6.10	-0.04	-0.67	0.99	19.44
Total Foreign	28.61	28.75	28.93	29.05	1.37	1.34	1.36	1.36	39.33	38.52	39.45	39.52	0.07	0.17	1.00	2.59
South Asia																
India	12.60	12.60	12.70	12.90	0.98	0.89	0.99	1.00	12.31	11.25	12.52	12.95	0.43	3.39	1.70	15.09
Pakistan	2.70	2.30	2.50	2.50	1.32	1.43	1.39	1.32	3.55	3.29	3.47	3.29	-0.17	-5.02	0.00	0.00
China	3.40	3.50	3.45	3.45	3.18	3.11	3.15	3.15	10.80	10.88	10.88	10.88	0.00	0.00	0.00	0.00
Former Soviet Union - 12																
Uzbekistan	1.25	1.10	1.05	1.05	1.21	1.17	1.12	1.12	1.51	1.28	1.18	1.18	0.00	0.00	-0.11	-8.42
Turkmenistan	0.55	0.55	0.55	0.55	0.96	0.65	0.77	0.77	0.53	0.36	0.42	0.42	0.00	0.00	0.06	17.98
Tajikistan	0.19	0.18	0.18	0.18	0.97	0.90	0.94	0.94	0.18	0.16	0.17	0.17	0.00	0.00	0.01	4.94
Kazakhstan	0.13	0.13	0.12	0.12	0.94	1.05	0.94	0.94	0.12	0.14	0.11	0.11	0.00	0.00	-0.03	-18.52
South America																
Brazil	1.18	1.62	1.55	1.50	2.57	2.58	2.53	2.53	3.02	4.17	3.93	3.80	-0.13	-3.33	-0.38	-9.01
Argentina	0.32	0.38	0.36	0.36	0.87	1.09	1.03	1.03	0.28	0.41	0.37	0.37	0.00	0.00	-0.04	-10.63
Middle East																
Turkey	0.47	0.52	0.56	0.56	2.77	2.60	2.39	2.39	1.30	1.35	1.34	1.34	0.00	0.00	-0.01	-0.81
Syria	0.03	0.03	0.03	0.03	2.17	2.36	2.40	2.40	0.07	0.06	0.06	0.06	0.00	0.00	0.00	1.69
Iran	0.09	0.08	0.08	0.08	0.96	1.16	1.16	1.16	0.08	0.09	0.09	0.09	0.00	0.00	0.00	0.00
Australia	0.53	0.38	0.20	0.17	2.72	1.74	2.10	2.12	1.44	0.66	0.42	0.36	-0.06	-14.29	-0.30	-45.54
European Union	0.30	0.31	0.32	0.32	1.65	1.76	1.72	1.77	0.49	0.55	0.55	0.56	0.02	2.93	0.01	2.18
Africa																
Burkina	0.85	0.63	0.60	0.60	0.39	0.37	0.44	0.44	0.33	0.24	0.26	0.26	0.00	0.00	0.03	11.49
Mali	0.71	0.73	0.78	0.78	0.56	0.50	0.54	0.54	0.40	0.36	0.42	0.42	0.00	0.00	0.06	17.55
Cameroon	0.23	0.25	0.25	0.25	1.11	1.20	1.13	1.13	0.25	0.30	0.28	0.28	0.00	0.00	-0.02	-6.00
Cote d'Ivoire	0.33	0.39	0.43	0.43	0.66	0.60	0.57	0.57	0.22	0.23	0.24	0.24	0.00	0.00	0.01	2.99
Benin	0.53	0.65	0.68	0.68	0.71	0.71	0.71	0.71	0.38	0.46	0.48	0.48	0.00	0.00	0.02	3.46
Tanzania	0.35	0.50	0.50	0.50	0.29	0.37	0.35	0.35	0.10	0.19	0.18	0.18	0.00	0.00	-0.01	-5.91
Egypt	0.09	0.14	0.10	0.10	1.00	1.08	1.06	1.06	0.09	0.15	0.11	0.11	0.00	0.00	-0.05	-30.26
Nigeria	0.27	0.27	0.27	0.27	0.38	0.38	0.38	0.38	0.10	0.10	0.10	0.10	0.00	0.00	0.00	0.00
Uganda	0.08	0.08	0.08	0.08	1.91	1.40	1.45	1.45	0.15	0.11	0.11	0.11	0.00	0.00	0.00	3.81
Zimbabwe	0.20	0.20	0.20	0.20	0.52	0.38	0.36	0.36	0.10	0.08	0.07	0.07	0.00	0.00	0.00	-5.26
Sudan	0.18	0.18	0.20	0.20	1.35	1.42	1.54	1.54	0.24	0.26	0.31	0.31	0.00	0.00	0.05	20.78
Mexico	0.21	0.24	0.23	0.23	2.52	2.44	2.43	2.39	0.53	0.59	0.55	0.54	-0.01	-1.65	-0.06	-9.44
Burma	0.25	0.24	0.24	0.24	1.24	1.23	1.20	1.20	0.31	0.30	0.29	0.29	0.00	0.00	-0.01	-2.03
Others	0.63	0.59	0.76	0.76	0.72	0.86	0.73	0.73	0.45	0.51	0.56	0.56	0.00	0.00	0.05	10.28

World and Selected Countries and Regions

Table 13 Peanut Area, Yield, and Production

Country / Region	Area (Million hectares)				Yield (Metric tons per hectare)				Production (Million metric tons)				Change in Production						
	2017/18	Prel.		2019/20 Proj.		2017/18	Prel.		2019/20 Proj.		2017/18	Prel.		2019/20 Proj.		From last month		From last year	
		2018/19	Sep	Oct	2018/19		Sep	Oct	2018/19	Sep		Oct	MMT	Percent	MMT	Percent			
World	27.04	27.34	26.31	26.31	1.72	1.69	1.69	1.69	46.58	46.19	44.52	44.44	-0.08	-0.17	-1.74	-3.78			
United States	0.72	0.56	0.56	0.56	4.49	4.48	4.58	4.44	3.23	2.49	2.56	2.49	-0.08	-2.97	-0.01	-0.24			
Total Foreign	26.32	26.78	25.75	25.75	1.65	1.63	1.63	1.63	43.35	43.69	41.96	41.96	0.00	0.00	-1.74	-3.98			
China	4.61	4.56	4.60	4.60	3.71	3.73	3.80	3.80	17.09	17.00	17.50	17.50	0.00	0.00	0.50	2.94			
Africa																			
Nigeria	2.82	2.82	2.80	2.80	1.51	1.57	1.25	1.25	4.25	4.42	3.50	3.50	0.00	0.00	-0.92	-20.85			
Sudan	2.22	3.07	2.30	2.30	0.74	0.94	0.78	0.78	1.65	2.88	1.80	1.80	0.00	0.00	-1.08	-37.59			
Senegal	1.25	1.25	1.20	1.20	1.13	1.16	0.92	0.92	1.41	1.45	1.10	1.10	0.00	0.00	-0.35	-24.14			
Cameroon	0.43	0.43	0.43	0.43	1.40	1.40	1.40	1.40	0.60	0.60	0.60	0.60	0.00	0.00	0.00	0.00			
Ghana	0.34	0.34	0.34	0.34	1.28	1.55	1.31	1.31	0.43	0.52	0.44	0.44	0.00	0.00	-0.08	-15.38			
Chad	0.77	0.77	0.77	0.77	1.13	1.16	1.10	1.10	0.87	0.89	0.85	0.85	0.00	0.00	-0.04	-4.49			
Malawi	0.39	0.37	0.37	0.37	0.99	0.88	0.88	0.88	0.39	0.33	0.33	0.33	0.00	0.00	0.00	0.00			
Congo (Kinshasa)	0.50	0.50	0.50	0.50	0.85	0.85	0.85	0.85	0.42	0.42	0.42	0.42	0.00	0.00	0.00	0.00			
Niger	0.92	0.93	0.90	0.90	0.50	0.64	0.56	0.56	0.46	0.59	0.50	0.50	0.00	0.00	-0.09	-15.54			
Mali	0.39	0.38	0.43	0.43	0.78	1.31	1.00	1.00	0.30	0.49	0.43	0.43	0.00	0.00	-0.07	-13.44			
Uganda	0.43	0.43	0.43	0.43	0.71	0.71	0.71	0.71	0.30	0.30	0.30	0.30	0.00	0.00	0.00	0.00			
Burkina	0.56	0.56	0.56	0.56	0.60	0.59	0.80	0.80	0.33	0.33	0.45	0.45	0.00	0.00	0.12	36.36			
Guinea	0.67	0.68	0.68	0.68	1.04	1.13	1.10	1.10	0.70	0.77	0.75	0.75	0.00	0.00	-0.02	-2.60			
Egypt	0.06	0.06	0.06	0.06	3.20	3.20	3.20	3.20	0.21	0.21	0.21	0.21	0.00	0.00	0.00	0.00			
Central African Republic	0.10	0.10	0.10	0.10	1.50	1.50	1.50	1.50	0.15	0.15	0.15	0.15	0.00	0.00	0.00	0.00			
South Africa	0.06	0.02	0.05	0.05	1.36	1.25	1.50	1.50	0.08	0.03	0.08	0.08	0.00	0.00	0.05	200.00			
Mozambique	0.40	0.38	0.38	0.38	0.23	0.34	0.34	0.34	0.09	0.13	0.13	0.13	0.00	0.00	0.00	0.00			
Cote d'Ivoire	0.15	0.15	0.15	0.15	1.39	1.45	1.45	1.45	0.20	0.21	0.21	0.21	0.00	0.00	0.00	0.00			
Benin	0.16	0.19	0.19	0.19	0.88	1.19	0.92	0.92	0.14	0.23	0.18	0.18	0.00	0.00	-0.05	-22.57			
South Asia																			
India	4.89	4.70	4.50	4.50	1.36	1.00	1.16	1.16	6.65	4.70	5.20	5.20	0.00	0.00	0.50	10.64			
Pakistan	0.09	0.10	0.09	0.09	0.97	0.95	0.98	0.98	0.09	0.09	0.09	0.09	0.00	0.00	0.00	1.11			
Southeast Asia																			
Indonesia	0.58	0.57	0.55	0.55	1.85	1.80	1.80	1.80	1.08	1.03	0.99	0.99	0.00	0.00	-0.04	-3.41			
Burma	0.89	0.89	0.89	0.89	1.55	1.55	1.55	1.55	1.38	1.38	1.38	1.38	0.00	0.00	0.00	0.00			
Vietnam	0.19	0.19	0.19	0.19	2.37	2.41	2.47	2.47	0.45	0.46	0.47	0.47	0.00	0.00	0.01	2.40			
Thailand	0.02	0.02	0.02	0.02	1.67	1.67	1.67	1.67	0.04	0.04	0.04	0.04	0.00	0.00	0.00	0.00			
South America																			
Argentina	0.38	0.32	0.32	0.32	2.27	4.43	3.92	3.92	0.87	1.42	1.26	1.26	0.00	0.00	-0.16	-11.50			
Brazil	0.14	0.15	0.16	0.16	3.71	2.96	3.55	3.55	0.52	0.44	0.55	0.55	0.00	0.00	0.12	26.44			
Mexico	0.06	0.06	0.06	0.06	1.70	1.70	1.73	1.73	0.10	0.10	0.10	0.10	0.00	0.00	0.01	5.15			
Others	1.88	1.83	1.75	1.75	1.13	1.15	1.13	1.13	2.13	2.12	1.98	1.98	0.00	0.00	-0.14	-6.48			

Table 14 Sunflowerseed Area, Yield, and Production

Country / Region	Area (Million hectares)				Yield (Metric tons per hectare)				Production (Million metric tons)				Change in Production			
	2017/18	Prel.		2019/20 Proj.		2017/18	Prel.		2019/20 Proj.		2017/18	Prel.		2019/20 Proj.		
		2018/19	Sep	Oct	2018/19		Sep	Oct	2018/19	Sep		Oct	MMT	Percent	MMT	Percent
World	25.93	26.33	26.33	26.26	1.84	1.95	2.00	1.96	47.82	51.42	52.58	51.38	-1.20	-2.29	-0.04	-0.07
United States	0.54	0.49	0.54	0.53	1.80	1.94	1.87	1.93	0.97	0.96	1.00	1.02	0.02	2.30	0.07	6.90
Total Foreign	25.39	25.84	25.79	25.73	1.85	1.95	2.00	1.96	46.85	50.46	51.59	50.36	-1.23	-2.38	-0.10	-0.20
Former Soviet Union - 12																
Russia	7.15	7.94	8.00	8.00	1.45	1.60	1.63	1.63	10.36	12.71	13.00	13.00	0.00	0.00	0.29	2.28
Ukraine	6.80	6.50	6.20	6.20	2.01	2.31	2.50	2.34	13.70	15.00	15.50	14.50	-1.00	-6.45	-0.50	-3.33
Kazakhstan	0.88	0.85	0.80	0.80	1.02	1.00	1.00	1.00	0.90	0.85	0.80	0.80	0.00	0.00	-0.05	-5.66
European Union	4.39	4.12	4.38	4.38	2.30	2.31	2.26	2.24	10.13	9.51	9.90	9.80	-0.10	-1.01	0.29	3.02
South America																
Argentina	1.68	1.88	1.80	1.74	2.11	2.04	2.10	2.10	3.54	3.83	3.78	3.65	-0.13	-3.33	-0.17	-4.47
Uruguay	0.05	0.06	0.06	0.06	1.56	1.61	1.67	1.67	0.08	0.09	0.10	0.10	0.00	0.00	0.01	11.11
Bolivia	0.13	0.12	0.13	0.13	0.80	0.70	0.77	0.77	0.11	0.08	0.10	0.10	0.00	0.00	0.02	25.00
Brazil	0.10	0.07	0.08	0.08	1.48	1.71	1.50	1.50	0.14	0.11	0.12	0.12	0.00	0.00	0.01	8.11
Paraguay	0.03	0.03	0.03	0.03	1.66	1.69	1.70	1.70	0.05	0.05	0.05	0.05	0.00	0.00	0.00	-5.56
China	1.17	1.25	1.25	1.25	2.69	2.60	2.60	2.60	3.15	3.25	3.25	3.25	0.00	0.00	0.00	0.00
South Asia																
India	0.28	0.35	0.23	0.23	0.81	0.80	0.76	0.76	0.23	0.28	0.17	0.17	0.00	0.00	-0.11	-39.29
Pakistan	0.08	0.12	0.14	0.14	1.13	1.20	1.04	1.04	0.09	0.14	0.15	0.15	0.00	0.00	0.00	0.69
Middle East																
Turkey	0.70	0.72	0.73	0.73	2.21	2.52	2.40	2.40	1.55	1.80	1.75	1.75	0.00	0.00	-0.05	-2.78
Iran	0.04	0.04	0.04	0.04	1.08	1.08	1.08	1.08	0.04	0.04	0.04	0.04	0.00	0.00	0.00	0.00
Israel	0.01	0.01	0.01	0.01	1.60	1.60	1.60	1.60	0.02	0.02	0.02	0.02	0.00	0.00	0.00	0.00
Africa																
Egypt	0.01	0.01	0.01	0.01	2.38	2.38	2.38	2.38	0.02	0.02	0.02	0.02	0.00	0.00	0.00	0.00
Morocco	0.02	0.02	0.02	0.02	1.26	1.29	1.25	1.25	0.02	0.03	0.03	0.03	0.00	0.00	0.00	-7.41
South Africa	0.60	0.52	0.61	0.61	1.43	1.32	1.23	1.23	0.86	0.68	0.75	0.75	0.00	0.00	0.07	10.29
Burma	0.60	0.60	0.60	0.60	0.65	0.65	0.65	0.65	0.39	0.39	0.39	0.39	0.00	0.00	0.00	0.00
Canada	0.03	0.03	0.02	0.02	2.23	2.11	2.27	2.27	0.06	0.06	0.05	0.05	0.00	0.00	-0.01	-12.28
Australia	0.01	0.02	0.02	0.02	1.86	1.21	1.25	1.25	0.03	0.02	0.03	0.03	0.00	0.00	0.00	8.70
Others	0.63	0.61	0.64	0.64	2.21	2.48	2.49	2.49	1.38	1.50	1.60	1.60	0.00	0.00	0.10	6.66

World and Selected Countries and Regions

Table 15 Rapeseed Area, Yield, and Production

Country / Region	Area (Million hectares)				Yield (Metric tons per hectare)				Production (Million metric tons)				Change in Production			
	Prel.		2019/20 Proj.		Prel.		2019/20 Proj.		Prel.		2019/20 Proj.		From last month		From last year	
	2017/18	2018/19	Sep	Oct	2017/18	2018/19	Sep	Oct	2017/18	2018/19	Sep	Oct	MMT	Percent	MMT	Percent
World	36.50	36.51	34.73	34.73	2.05	1.97	2.00	1.97	74.92	71.94	69.54	68.57	-0.97	-1.39	-3.37	-4.68
United States	0.81	0.79	0.81	0.81	1.71	2.09	1.99	2.08	1.39	1.64	1.61	1.69	0.08	5.22	0.05	2.98
Total Foreign	35.69	35.72	33.92	33.92	2.06	1.97	2.00	1.97	73.53	70.29	67.93	66.88	-1.05	-1.55	-3.42	-4.86
European Union	6.80	7.03	5.58	5.58	3.26	2.85	3.14	3.08	22.18	20.03	17.50	17.15	-0.35	-2.00	-2.88	-14.39
Canada	9.27	9.12	8.40	8.40	2.30	2.23	2.39	2.32	21.33	20.34	20.10	19.50	-0.60	-2.99	-0.84	-4.14
China	6.65	6.47	6.60	6.60	2.00	1.99	1.98	1.98	13.27	12.85	13.10	13.10	0.00	0.00	0.25	1.95
South Asia																
India	6.70	7.20	7.30	7.30	1.06	1.11	1.05	1.05	7.10	8.00	7.70	7.70	0.00	0.00	-0.30	-3.75
Pakistan	0.24	0.23	0.24	0.24	0.96	0.98	0.98	0.98	0.23	0.23	0.24	0.24	0.00	0.00	0.01	4.44
Bangladesh	0.25	0.25	0.25	0.25	0.92	0.92	0.92	0.92	0.23	0.23	0.23	0.23	0.00	0.00	0.00	0.00
Former Soviet Union - 12																
Russia	0.95	1.50	1.50	1.50	1.58	1.33	1.40	1.40	1.50	1.99	2.10	2.10	0.00	0.00	0.11	5.58
Ukraine	0.79	1.00	1.28	1.28	2.80	2.85	2.42	2.42	2.22	2.85	3.10	3.10	0.00	0.00	0.25	8.77
Belarus	0.33	0.35	0.30	0.30	1.81	1.31	1.63	1.63	0.60	0.46	0.49	0.49	0.00	0.00	0.03	7.46
Kazakhstan	0.25	0.37	0.28	0.28	1.11	1.08	1.14	1.14	0.28	0.39	0.32	0.32	0.00	0.00	-0.07	-18.78
Australia	3.17	1.89	1.90	1.90	1.23	1.15	1.21	1.16	3.89	2.18	2.30	2.20	-0.10	-4.35	0.02	0.92
South America																
Chile	0.06	0.05	0.06	0.06	3.89	3.85	4.11	4.11	0.22	0.19	0.23	0.23	0.00	0.00	0.05	24.32
Paraguay	0.03	0.04	0.03	0.03	1.00	1.50	1.87	1.87	0.03	0.06	0.06	0.06	0.00	0.00	0.00	-6.67
Switzerland	0.02	0.02	0.02	0.02	3.14	3.14	3.14	3.14	0.07	0.07	0.07	0.07	0.00	0.00	0.00	0.00
Ethiopia	0.03	0.04	0.04	0.04	1.82	1.57	1.86	1.86	0.05	0.06	0.07	0.07	0.00	0.00	0.01	18.18
Others	0.15	0.17	0.15	0.15	2.17	2.16	2.23	2.23	0.33	0.38	0.33	0.33	0.00	0.00	-0.04	-10.93

World and Selected Countries and Regions

Table 16 Copra, Palm Kernel, and Palm Oil Production

Country / Region	Production (Million metric tons)				Change in Production			
	2017/18	Prel.	2019/20 Proj.		From last month		From last year	
		2018/19	Sep	Oct	MMT	Percent	MMT	Percent
Oilseed, Copra								
Philippines	2.60	2.63	2.50	2.50	0.00	0.00	-0.13	-4.94
Indonesia	1.65	1.64	1.60	1.60	0.00	0.00	-0.04	-2.44
India	0.75	0.75	0.75	0.75	0.00	0.00	0.00	0.00
Vietnam	0.28	0.29	0.29	0.29	0.00	0.00	0.00	0.00
Mexico	0.21	0.22	0.22	0.22	0.00	0.00	0.00	0.00
Papua New Guinea	0.10	0.10	0.10	0.10	0.00	0.00	0.00	0.00
Thailand	0.07	0.07	0.07	0.07	0.00	0.00	0.00	0.00
Sri Lanka	0.07	0.07	0.07	0.07	0.00	0.00	0.00	0.00
Solomon Islands	0.03	0.03	0.03	0.03	0.00	0.00	0.00	0.00
Cote d'Ivoire	0.03	0.03	0.03	0.03	0.00	0.00	0.00	0.00
World	5.94	5.98	5.81	5.81	0.00	0.00	-0.17	-2.84
Oilseed, Palm Kernel								
Indonesia	10.50	10.90	11.30	11.30	0.00	0.00	0.40	3.67
Malaysia	4.92	5.20	5.30	5.30	0.00	0.00	0.10	1.92
Thailand	0.82	0.87	0.89	0.89	0.00	0.00	0.02	2.30
Nigeria	0.73	0.73	0.73	0.73	0.00	0.00	0.00	0.00
Colombia	0.33	0.33	0.36	0.36	0.00	0.00	0.03	9.09
Guatemala	0.17	0.17	0.17	0.17	0.00	0.00	0.00	0.00
Papua New Guinea	0.17	0.17	0.17	0.17	0.00	0.00	0.00	0.00
Honduras	0.14	0.14	0.14	0.14	0.00	0.00	0.00	0.00
Brazil	0.13	0.14	0.14	0.14	0.00	0.00	0.00	0.00
Cote d'Ivoire	0.12	0.12	0.12	0.12	0.00	0.00	0.00	0.00
World	18.76	19.50	20.05	20.05	0.00	0.00	0.55	2.82
Oil, Palm								
Indonesia	39.50	41.50	43.00	43.00	0.00	0.00	1.50	3.61
Malaysia	19.68	21.00	21.20	21.20	0.00	0.00	0.20	0.95
Thailand	2.78	2.90	3.00	3.00	0.00	0.00	0.10	3.45
Colombia	1.63	1.63	1.68	1.68	0.00	0.00	0.06	3.70
Nigeria	1.03	1.02	1.02	1.02	0.00	0.00	0.00	0.00
Guatemala	0.85	0.85	0.85	0.85	0.00	0.00	0.00	0.00
Papua New Guinea	0.63	0.63	0.63	0.63	0.00	0.00	0.00	0.00
Ecuador	0.57	0.58	0.63	0.63	0.00	0.00	0.05	8.62
Honduras	0.58	0.58	0.58	0.58	0.00	0.00	0.00	0.00
Brazil	0.50	0.53	0.54	0.54	0.00	0.00	0.02	3.85
World	70.61	74.08	76.01	76.01	0.00	0.00	1.93	2.61

World and Selected Countries and Regions

Table 17 Cotton Area, Yield, and Production

Country / Region	Area (Million hectares)				Yield (Kilograms per hectare)				Production (Million 480 lb. bales)				Change in Production			
	2017/18	Prel.	2019/20 Proj.		2017/18	Prel.	2019/20 Proj.		2017/18	Prel.	2019/20 Proj.		From last month		From last year	
		2018/19	Sep	Oct		2018/19	Sep	Oct		2018/19	Sep	Oct	MBales	Percent	MBales	Percent
World	33.73	33.53	34.66	34.78	799	773	785	781	123.78	119.01	124.90	124.77	-0.13	-0.10	5.76	4.84
United States	4.49	4.13	5.06	5.06	1,014	968	940	934	20.92	18.37	21.86	21.71	-0.16	-0.72	3.34	18.17
Total Foreign	29.24	29.40	29.60	29.72	766	745	758	755	102.86	100.65	103.04	103.07	0.03	0.03	2.42	2.41
South Asia																
India	12.60	12.60	12.70	12.90	501	458	506	515	29.00	26.50	29.50	30.50	1.00	3.39	4.00	15.09
Pakistan	2.70	2.30	2.50	2.50	661	719	697	662	8.20	7.60	8.00	7.60	-0.40	-5.00	0.00	0.00
China	3.40	3.50	3.45	3.45	1,761	1,726	1,751	1,751	27.50	27.75	27.75	27.75	0.00	0.00	0.00	0.00
South America																
Brazil	1.18	1.62	1.55	1.50	1,708	1,719	1,686	1,684	9.22	12.75	12.00	11.60	-0.40	-3.33	-1.15	-9.02
Argentina	0.32	0.38	0.36	0.36	558	642	605	605	0.82	1.12	1.00	1.00	0.00	0.00	-0.12	-10.71
Paraguay	0.01	0.01	0.01	0.01	416	416	416	416	0.02	0.02	0.02	0.02	0.00	0.00	0.00	0.00
Africa																
Burkina	0.85	0.63	0.60	0.60	307	294	345	345	1.20	0.85	0.95	0.95	0.00	0.00	0.10	11.76
Mali	0.71	0.73	0.78	0.78	432	381	419	419	1.40	1.27	1.49	1.49	0.00	0.00	0.22	17.32
Cote d'Ivoire	0.33	0.39	0.43	0.43	536	486	461	461	0.81	0.88	0.90	0.90	0.00	0.00	0.03	2.86
Benin	0.53	0.65	0.68	0.68	468	469	468	468	1.14	1.40	1.45	1.45	0.00	0.00	0.05	3.57
Egypt	0.09	0.14	0.10	0.10	718	772	762	762	0.30	0.50	0.35	0.35	0.00	0.00	-0.15	-30.00
Cameroon	0.23	0.25	0.25	0.25	484	523	492	492	0.50	0.60	0.57	0.57	0.00	0.00	-0.04	-5.83
Tanzania	0.35	0.50	0.50	0.50	143	185	174	174	0.23	0.43	0.40	0.40	0.00	0.00	-0.03	-5.88
Nigeria	0.27	0.27	0.27	0.27	190	190	190	190	0.24	0.24	0.24	0.24	0.00	0.00	0.00	0.00
Zimbabwe	0.20	0.20	0.20	0.20	294	218	207	207	0.27	0.20	0.19	0.19	0.00	0.00	-0.01	-5.00
Ethiopia	0.06	0.08	0.08	0.08	639	687	680	680	0.18	0.24	0.25	0.25	0.00	0.00	0.01	2.88
Former Soviet Union - 12																
Uzbekistan	1.25	1.10	1.05	1.05	672	648	622	622	3.86	3.28	3.00	3.00	0.00	0.00	-0.28	-8.40
Turkmenistan	0.55	0.55	0.55	0.55	535	364	459	459	1.34	0.91	1.15	1.15	0.00	0.00	0.24	26.37
Tajikistan	0.19	0.18	0.18	0.18	671	502	532	532	0.57	0.42	0.44	0.44	0.00	0.00	0.03	6.02
Kazakhstan	0.13	0.13	0.12	0.12	523	587	558	558	0.30	0.35	0.30	0.30	0.00	0.00	-0.05	-13.04
Middle East																
Turkey	0.47	0.52	0.56	0.56	1,853	1,549	1,594	1,594	4.00	3.70	4.10	4.10	0.00	0.00	0.40	10.81
Syria	0.03	0.03	0.03	0.03	1,161	1,219	1,219	1,219	0.16	0.14	0.14	0.14	0.00	0.00	0.00	0.00
Iran	0.09	0.08	0.08	0.08	640	748	748	748	0.25	0.28	0.28	0.28	0.00	0.00	0.00	0.00
Australia	0.53	0.38	0.20	0.17	1,972	1,261	1,524	1,537	4.80	2.20	1.40	1.20	-0.20	-14.29	-1.00	-45.45
Mexico	0.21	0.24	0.23	0.23	1,617	1,555	1,548	1,529	1.56	1.74	1.60	1.58	-0.02	-1.25	-0.16	-8.93
Burma	0.25	0.24	0.24	0.24	634	635	635	635	0.73	0.70	0.70	0.70	0.00	0.00	0.00	0.00
Others	1.74	1.72	1.93	1.93	535	584	550	556	4.28	4.61	4.88	4.93	0.05	1.02	0.32	6.92

World and Selected Countries and Regions

TABLE 18

The table below presents a record of the October projection and the final Estimate. Using world wheat production as an example, the "root mean square error" means that chances are 2 out of 3 that the current forecast will not be above or below the final estimate by more than 1.7 percent. Chances are 9 out of 10 (90% confidence level) that the difference will not exceed 2.8 percent. The average difference between the October projection and the final estimate is 7.3 million tons, ranging from 0.1 million to 26.7 million tons. The October projection has been below the estimate 27 times and above 10 times.

RELIABILITY OF PRODUCTION PROJECTIONS 1/

COMMODITY AND REGION	Root mean square error	90 percent confidence interval	Difference between forecast and final estimate					
			Average	Smallest	Largest	Years		
						Below final	Above final	
	Percent		---Million metric tons---					
WHEAT								
World	1.7	2.8	7.3	0.1	26.7	27	10	
U.S.	0.5	0.8	0.2	0.0	1.2	12	16	
Foreign	1.9	3.2	7.3	0.1	26.8	27	10	
COARSE GRAINS 2/								
World	1.9	3.3	15.7	0.8	51.9	29	8	
U.S.	2.7	4.6	4.6	0.1	17.9	22	15	
Foreign	2.5	4.3	15.1	0.6	61.4	30	7	
RICE (Milled)								
World	2.3	3.9	6.4	0.0	20.9	29	7	
U.S.	3.3	5.6	0.2	0.0	0.5	21	16	
Foreign	2.3	3.9	6.4	0.1	21.0	29	8	
SOYBEANS								
World	4.4	7.5	6.7	0.1	28.7	19	18	
U.S.	2.9	4.8	1.5	0.0	4.0	16	21	
Foreign	7.2	12.1	6.6	0.0	28.1	18	19	
COTTON			---Million 480-lb. bales---					
World	4.5	7.6	2.9	0.0	10.9	20	16	
U.S.	4.6	7.8	0.6	0.0	1.7	22	15	
Foreign	5.2	8.8	2.7	0.0	10.5	19	17	
UNITED STATES			-----Million bushels-----					
<i>CORN</i>	2.8	4.8	181	5	618	21	16	
<i>SORGHUM</i>	4.8	8.2	19	0	71	21	15	
<i>BARLEY</i>	1.5	2.5	4	0	24	9	15	
<i>OATS</i>	2.5	4.2	2	0	18	6	11	

1/ Marketing years 1981/82 through 2018/19. Final for grains, soybeans and cotton is defined as the first *November* estimates following the marketing year for 1981/82 through 2017/18, and for 2018/19 last month's estimate.

2/ Includes corn, sorghum, barley, oats, rye, millet, and mixed grain

October 2019

Office of Global Analysis, FAS, USDA