



United States
Department of
Agriculture

Foreign
Agricultural
Service

Circular Series
WAP 9-19
September 2019

World Agricultural Production

Australia Wheat: Production Forecast Revised Down Due to Drought in Eastern Australia

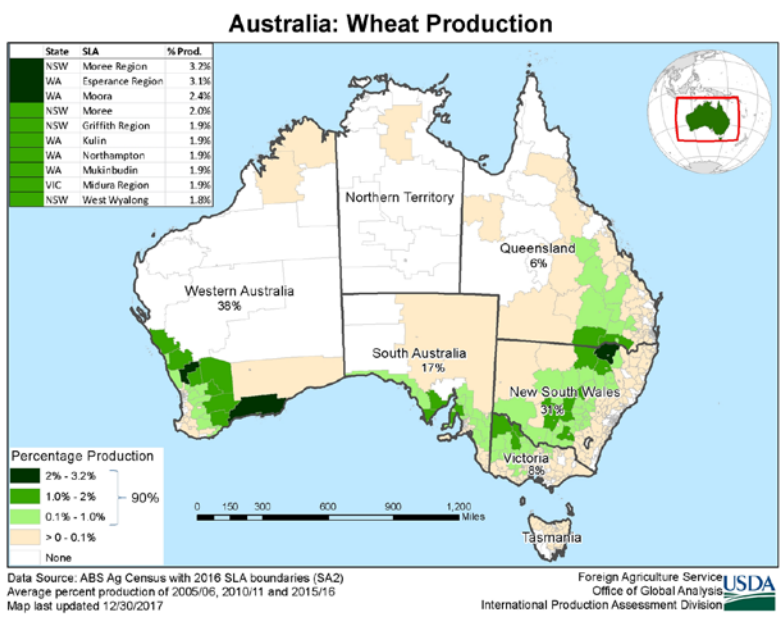


USDA forecasts Australia's 2019/20 wheat production at 19.0 million metric tons (mmt), down 2.0 mmt (10 percent) from last month, but up 1.7 mmt (10 percent) from last year. Harvested area is now expected to total 10.7 million hectares (mha), down 0.3 mha from last month, but up 0.5 mha (5 percent) from last year. Expected yield is estimated at 1.78 tons per hectare or 4 percent above last year.

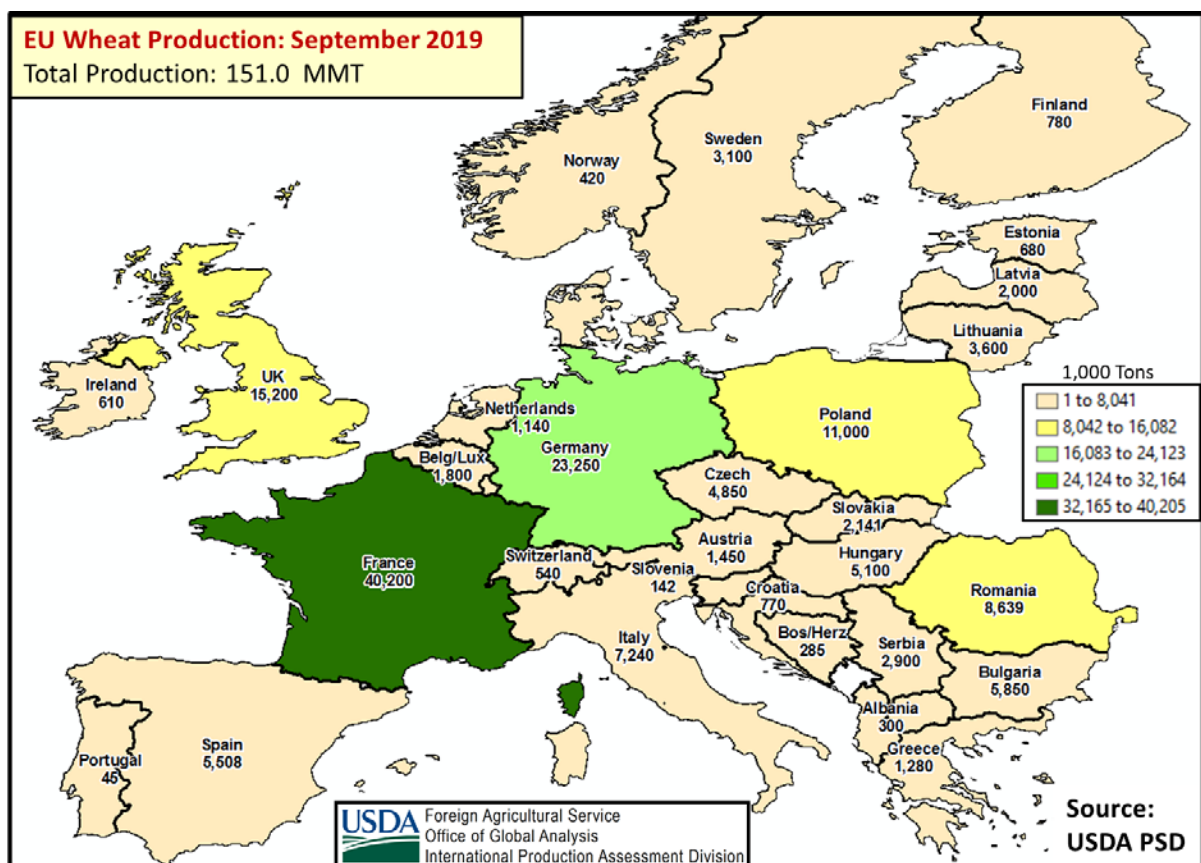
Australia's wheat region has experienced a mixed start. Sowing operations were facilitated by timely rainfall in May in most cropping regions of Western Australia, South Australia, Victoria, and southern New South Wales. Growing conditions remain generally favorable in Western

Approved by the World Agricultural Outlook Board

Australia, South Australia, and Victoria. In contrast, eastern states of Queensland (QLD) and New South Wales (NSW) have received below-normal precipitation for the entire season, resulting in lower yield potential. This is corroborated by satellite-derived vegetation indices showing poor vegetation conditions in QLD and NSW. USDA Foreign Agricultural Service analysts conducted crop travel assessment in late August. The team observed poor growing conditions in New South Wales and many producers are grazing livestock on the remains of the drought-affected crop. Soil moisture ranges from below average to insufficient throughout large areas of the wheat belt. Sufficient and timely September rainfall will be critically important for crop development. Harvest will begin in November. *(For more information, please contact James.Crutchfield@fas.usda.gov.)*



European Union Wheat: Harvest Results Nudge Crop up 1.0 Million Tons

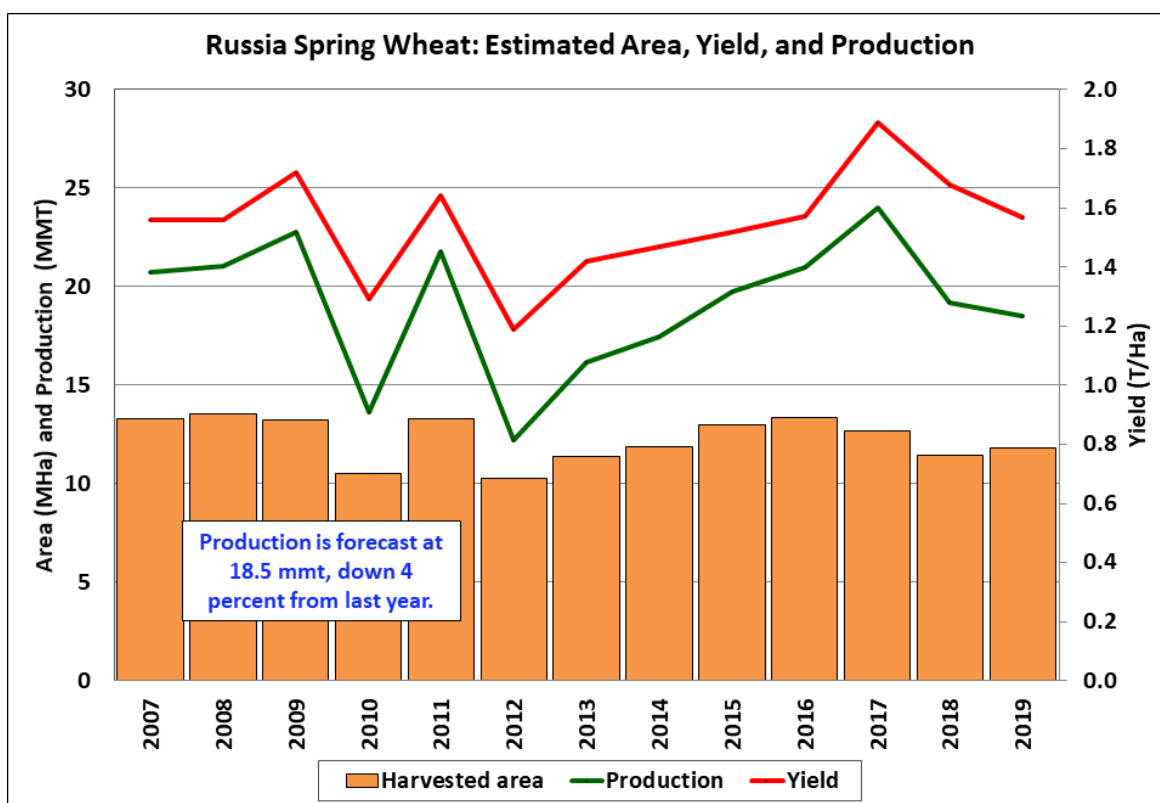


European Union (EU) 2019/20 wheat production is estimated at 151.0 million metric tons (mmt), up 1.0 mmt (less than 1 percent) from last month, and up 14.1 mmt (10 percent) from last year's poor harvest. Production is estimated to be near the 5-year average. Area is estimated at 26.1 million hectares (mha), down slightly from last month, but up 0.5 mha (2 percent) from last year. Estimated area is 0.4 mha below the 5-year average of 26.5 mha. Yield is estimated at 5.79 metric tons per hectare (mt/ha), up nearly 1 percent from last month, up 8 percent from last year, and 2 percent above the 5-year average of 5.66 mt/ha.

France and Germany are the top wheat producing countries in the EU. Harvest results show France's wheat crop to have been better than expected. Although periods of extreme heat and drought occurred during the season, harvest counts provided by the French Agricultural Ministry and other sources have discovered a more resilient crop than was expected. Due to the latest harvest data, USDA increased estimates for France wheat by 1.5 mmt to 40.2 mmt. Meanwhile reports from the German government have uncovered a crop that was more affected from weather conditions. Due to these reports, USDA is reducing production in Germany by 0.6 mmt. *(For more information, please contact Bryan.Purcell@fas.usda.gov.)*

For country-specific area, yield, and production estimates within the European Union (EU), please go to PSD Online at <https://apps.fas.usda.gov/PSDOnline/app/index.html#/app/home>, and select "Downloadable Data Sets." Select the zipped file for "EU Countries Area & Production."

Russia Spring Wheat: Conditions Worsen in Volga, Harvest is Ongoing



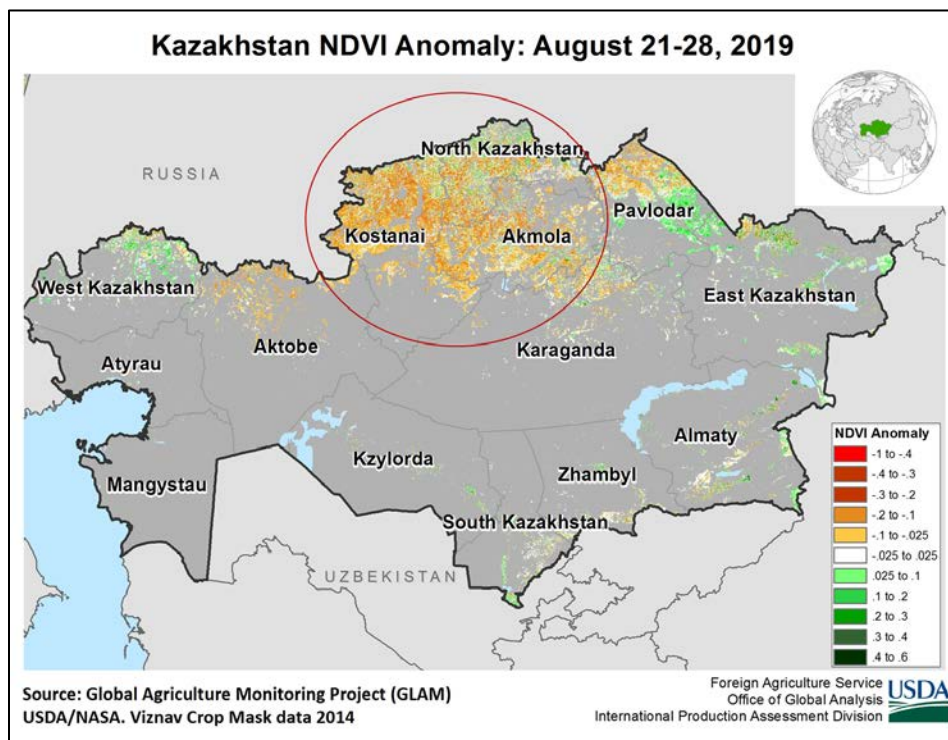
Source: USDA PSD

Russia spring wheat production for 2019/20 is estimated at 18.5 million metric tons (mmt), down 3 percent from last month and down 4 percent from last year. USDA crop production estimates for Russia exclude estimated output from Crimea. Spring wheat yield is estimated at 1.57 tons per hectare, down 3 percent from last month and down 7 percent from last year. Spring wheat area is estimated at 11.8 million hectares, unchanged from last month.

Spring wheat is grown in the Volga (28 percent of production), Urals (18 percent of production), and Siberia (43 percent of production) and accounts for about 30 percent of the total Russia wheat crop. The crop suffered from hot and dry weather in July and August that deteriorated crop conditions. Worsening conditions in southern Volga and southern Siberia led to irreversible yield loss. Harvest for the total wheat crop (winter and spring) is about 70 percent complete as of the beginning of September. USDA estimates total wheat production at 72.5 mmt.

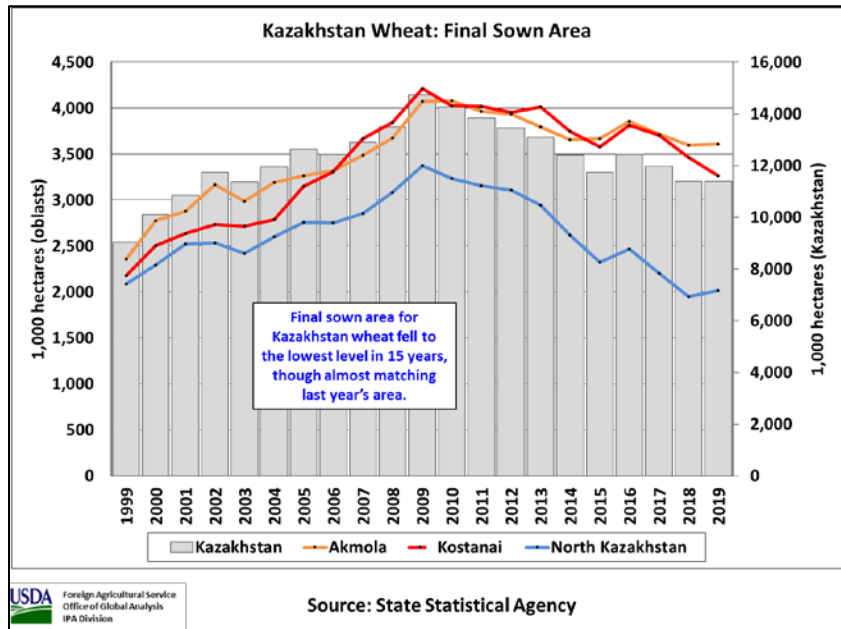
Area, yield, and production estimates for Russia winter wheat and spring wheat are available on PSD Online. Select “Downloadable Data Sets” and open the zipped file for “Russia Wheat; Winter/Spring Area & Prod.” (For more information, please contact Katie.McGaughey@fas.usda.gov.)

Kazakhstan Wheat: Decreased Sown Area and Poor Conditions in Kostanai Drop Area and Yield

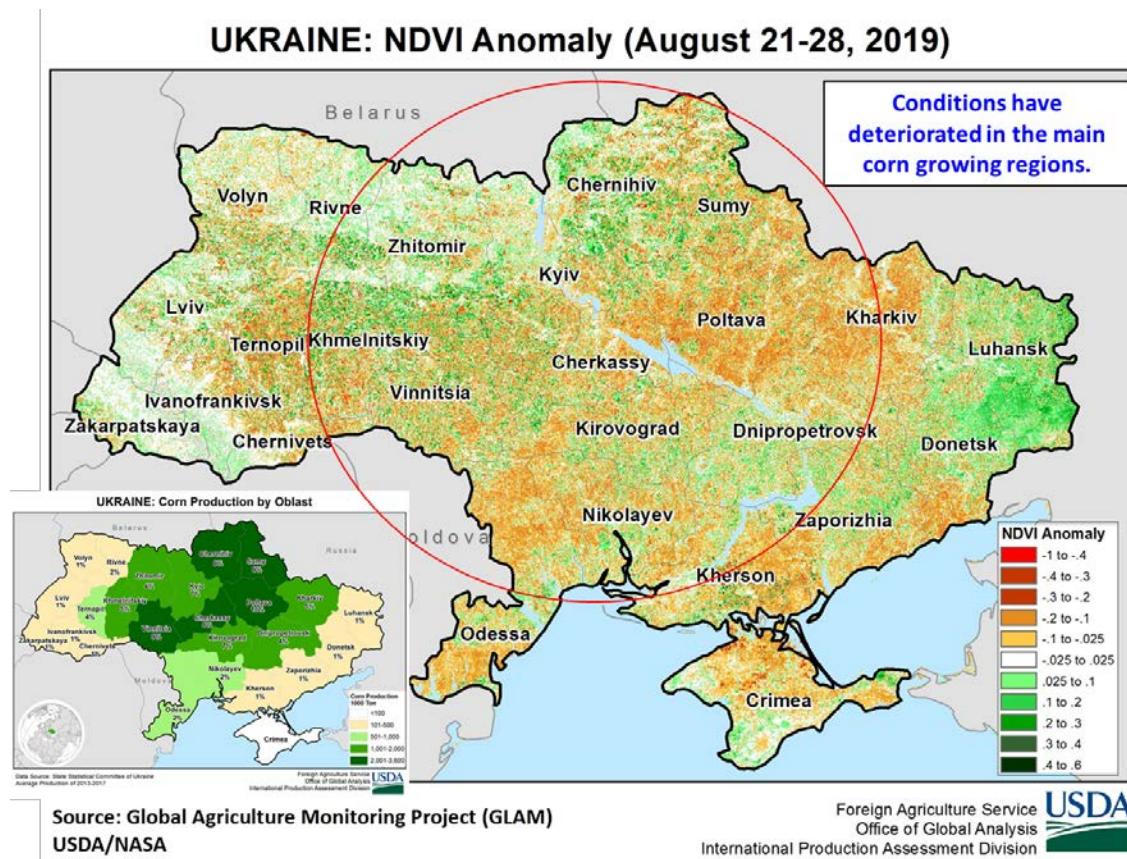


Kazakhstan wheat production for 2019/20 is estimated at 11.5 million metric tons (mmt), down 12 percent from last month and down 18 percent from last year. Yield is estimated at 1.02 tons per hectare, down 10 percent from last month and down 17 percent from last year. Area is estimated at 11.3 million hectares, down 1 percent from last month and last year based on final sown area data released by the State Statistical Agency.

Kazakhstan wheat is grown mostly in Kostanai, North Kazakhstan, and Akmola (29, 28, and 28 percent of production, respectively). The month-to-month decrease in yield is driven by the declining crop conditions as seen in the satellite derived Normalized Difference Vegetation Index (NDVI). NDVI analysis shows significantly below-average conditions in Kostanai where conditions were hot and dry throughout July and August. Harvest has begun. (For more information, please contact Katie.McGaughey@fas.usda.gov.)

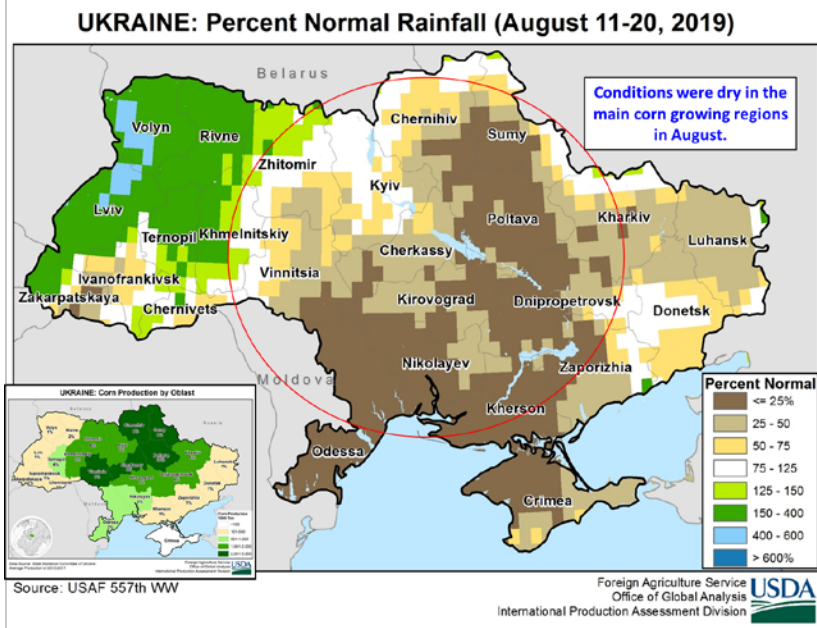


Ukraine Corn: Dry Weather in August Decreases Yield



Ukraine corn production for 2019/20 is estimated at 36.0 million metric tons, down 1 percent from last month, but up 1 percent from last year. Yield is estimated at 7.35 tons per hectare, down 1 percent from last month and down 6 percent from last year's record. The estimated harvested area is unchanged from last month at a record 4.9 million hectares, which is up 7 percent from last year.

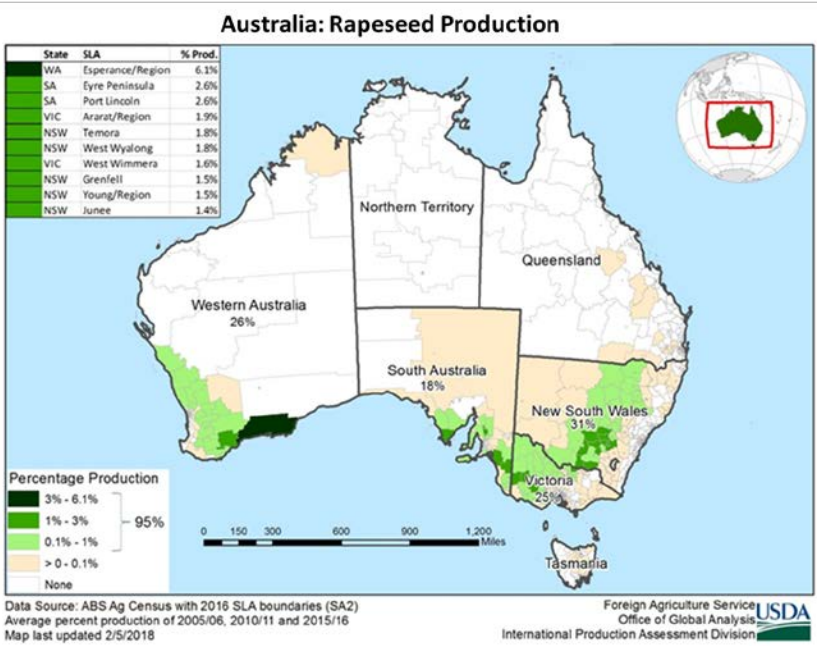
Corn is grown predominantly in the middle part of the country in the Forest Steppe agroclimatic region. The month-to-month decrease in yield is due to dry weather in August in the main corn growing region, which led to deteriorating conditions as shown by the satellite-derived Normalized Difference Vegetation Index (NDVI). Harvest has begun. USDA crop production estimates for Ukraine include estimated output from Crimea. *(For more information, please contact Katie.McGaughey@fas.usda.gov.)*

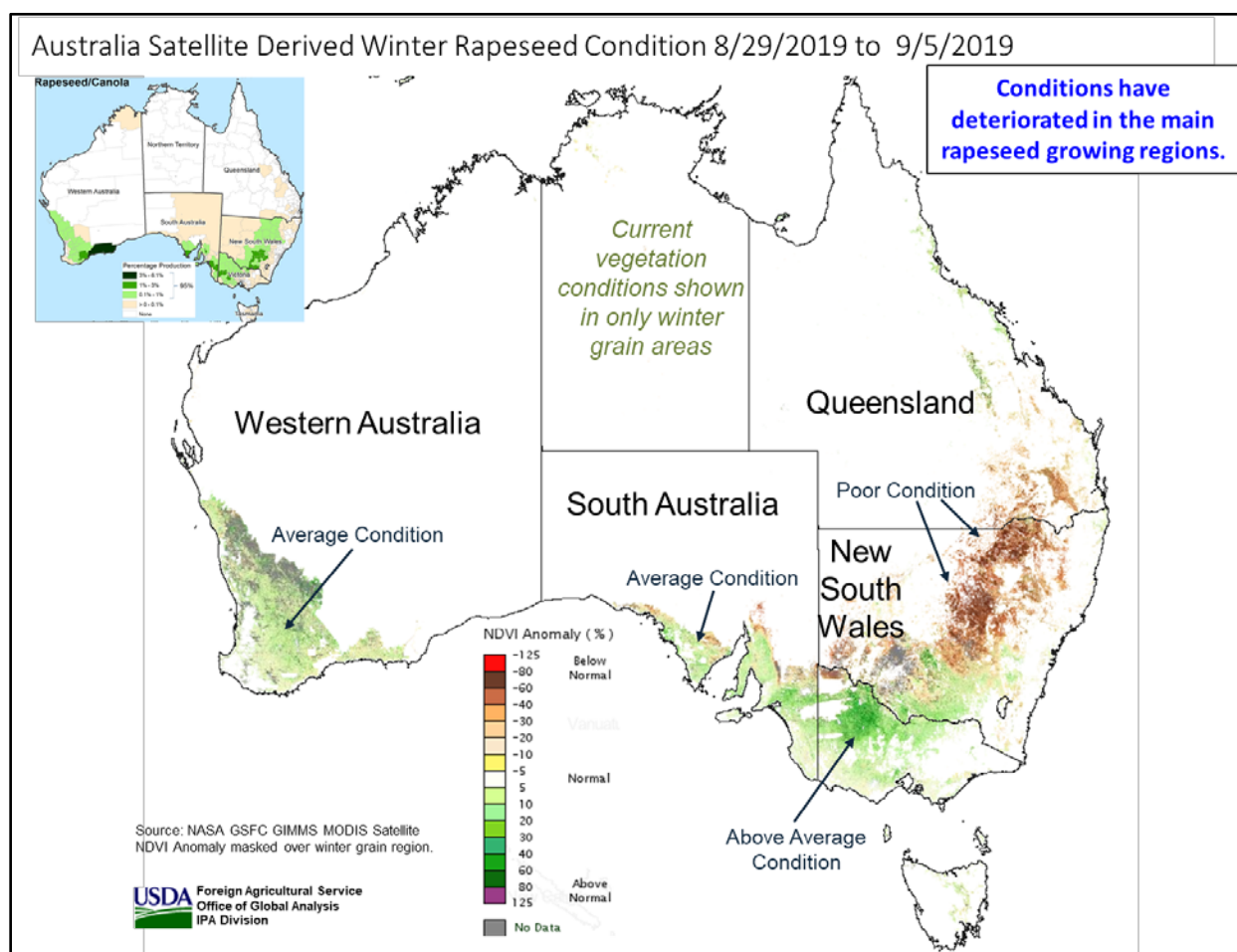


Australia Rapeseed: Lower Production Due to Dry Conditions

USDA forecasts Australia's 2019/20 rapeseed crop at 2.3 million metric tons (mmt), down 0.3 mmt (12 percent) from last month, but up 0.1 mmt (6 percent) from last year. Area is estimated at 1.9 million hectares (mha), down 0.1 mha from last month, and slightly below last year. Yield is forecast at 1.21 tons per hectare, up 5 percent from last year.

Persistent dryness and subsoil moisture deficits in major portions of Australia's winter crop region (wheat, barley and rapeseed) contributed to an estimated 7-percent drop in rapeseed yield from the 5-year average.

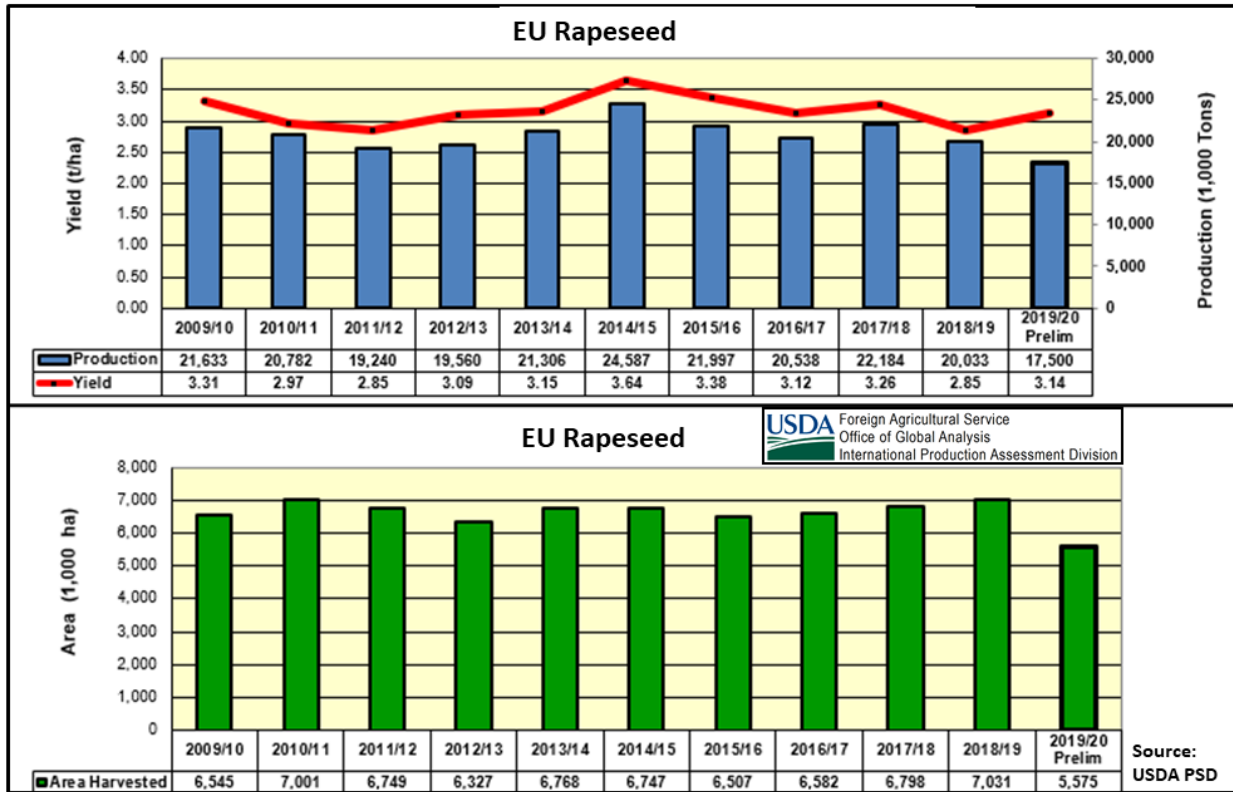




Precipitation has been well below normal since major sowing operations commenced in May. Satellite-derived seasonal vegetation indices reveal sharp differences in crop conditions between Western Australia and New South Wales, the two largest rapeseed producing states. Winter crops are sown in May and June. Harvest begins in October and is finished by the end of December. (For more information, please contact James.Crutchfield@fas.usda.gov.)

European Union Rapeseed: Estimated Production Down 0.5 Million Tons from Last Month

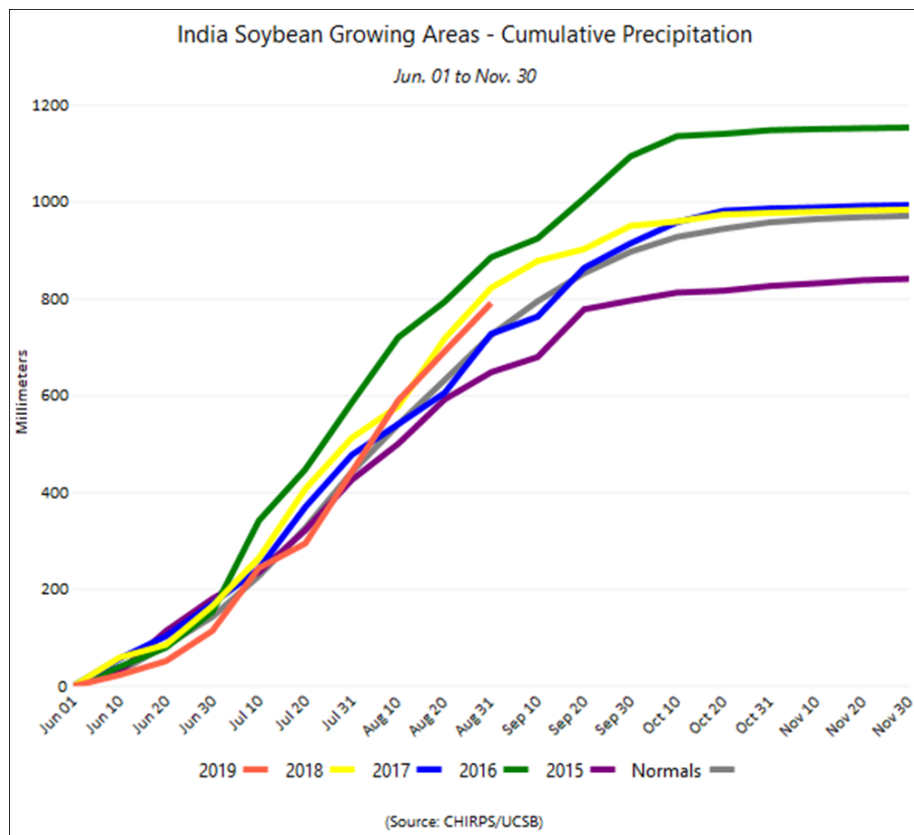
European Union (EU) 2019/20 rapeseed production is estimated at 17.5 million metric tons (mmt), down 0.5 mmt (3 percent) from last month, down 2.5 mmt (13 percent) from last year, and 20 percent below the 5-year average of 21.9 mmt. Area is estimated at 5.6 million hectares (mha), down slightly from last month, and down 1.5 mha (21 percent) from last year. The 5-year average area is 6.7 mha. Yield is estimated at 3.14 metric tons per hectare (mt/ha), down 1 percent from last month, but up 10 percent from last year and below the 5-year average of 3.25 mt/ha.



It has been a problematic year for EU rapeseed farmers. Planting was the lowest in years, primarily due to an ongoing drought prior to the autumn 2018 sowing campaign. During the growing season, spring drought, followed by high temperatures in June, prevented proper pod and seed development. In addition, the EU’s neonicotinoid ban has increased the spread of pests. Due to the latest crop harvest reports, USDA estimates for production have been reduced in the United Kingdom by 0.3 mmt to 1.9 mmt, and in Germany by 0.2 mmt to 3.0 mmt. Planting of 2020/21 rapeseed is underway, starting in mid-August and extending through mid-September. (For more information, please contact Bryan.Purcell@fas.usda.gov.)

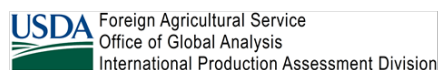
For country-specific area, yield, and production estimates within the European Union (EU), please go to PSD Online at <https://apps.fas.usda.gov/PSDOnline/app/index.html#/app/home>, and select “Downloadable Data Sets.” Select the zipped file for “EU Countries Area & Production.”

India Soybeans: Yield Revised Up from Last Month



Year	Soybean Yield (mt/ha)
2015	0.59
2016	0.99
2017	0.80
2018	1.05
2019	1.00

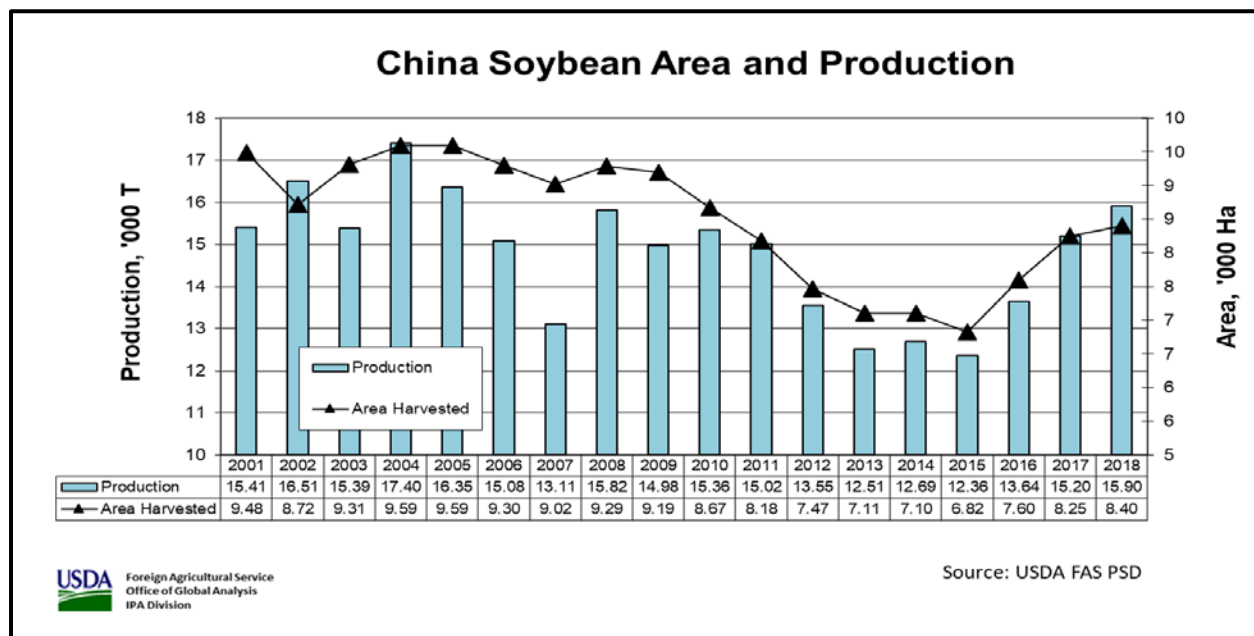
Source: USDA PSD



USDA forecasts India 2019/20 soybean production at 11.0 million metric tons, up nearly 7 percent from last month, but down 4 percent from last year. Area is estimated at 11.0 million hectares, unchanged from last month and last year. Yield is forecast to increase to 1.00 metric ton per hectare, up 7 percent from last month, but down nearly 4 percent from last year.

The 7-percent-yield increase is due to improved weather conditions in the major soybean planted area. Both Madhya Pradesh and Maharashtra received heavy rains in late July and early August. However, the heavy rains have diminished in the major soybean growing regions as the crop is reaching pod development. Cumulative precipitation is now slightly above the long-term average. Satellite-derived Normalized Difference Vegetation Index (NDVI) is showing strong crop vigor in both Maharashtra and Madhya Pradesh. *(For more information, please contact Arnella.Trent@fas.usda.gov.)*

China Soybeans: Production Forecast at a Record High



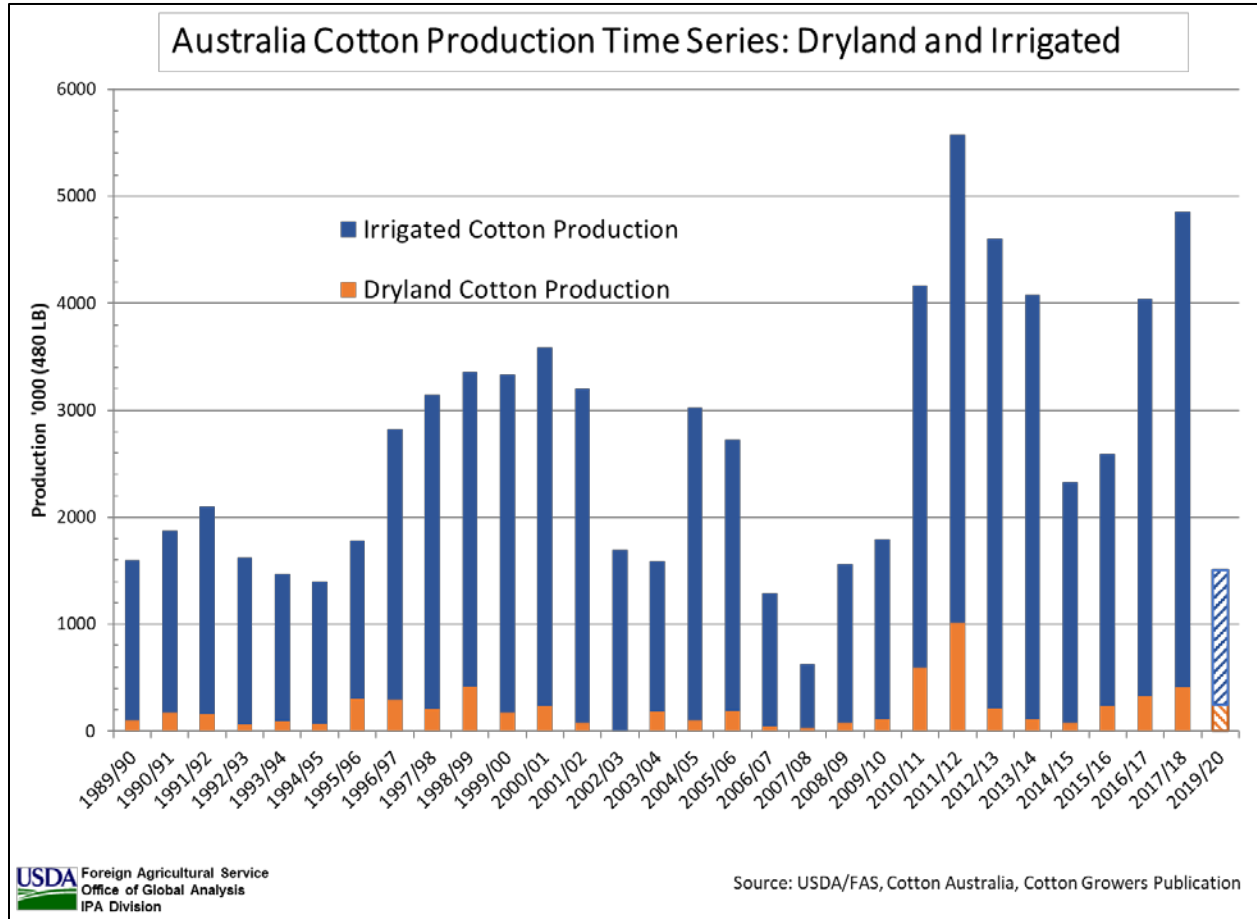
USDA forecasts China's 2019/20 soybean production at a record 17.1 million metric tons (mmt), up 1.2 mmt from last year. The year-to-year forecast is 8 percent higher than last year's record crop of 15.9 mmt primarily due to a rise in area planted, which is at a 5-year high. Area is forecast at 9.0 million hectares, up 0.6 million or 7 percent from last year. Yield is forecast at 1.90 tons per hectare (t/ha), up slightly from last year, and up 4 percent from the 5-year average of 1.83 t/ha.

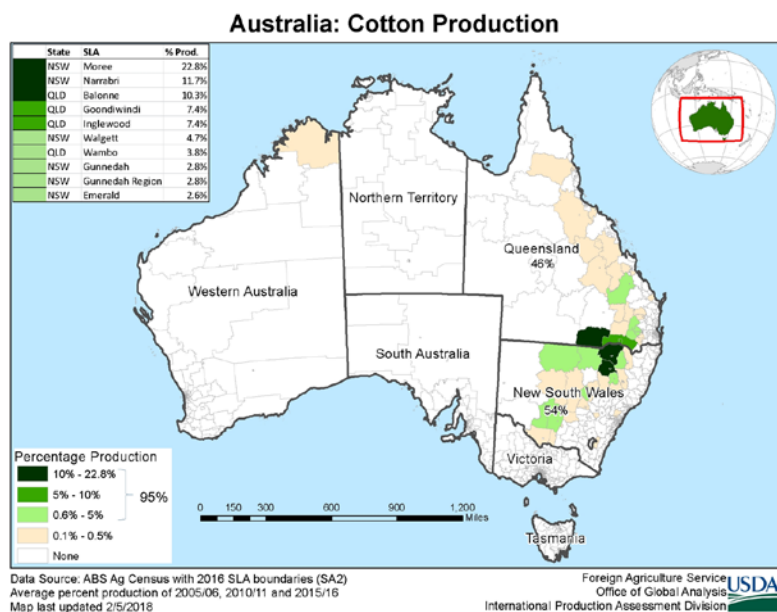
From 2009 to 2015 China's soybean production declined significantly due to substantial area decreases. However, the trend has since turned around beginning in 2016. According to China's National Development and Reform Commission (NDRC), the change is due primarily to farmers' response to the strong agricultural support policies including high minimum prices, guaranteed purchases, and production subsidies entitled by the government. In addition, in 2014 the government introduced a series of agricultural policies aimed at managing the domestic corn market, reducing corn inventories, and preventing stockpiles from increasing further. Farmers have significantly expanded soybean area for the past 5 years while decreasing corn area.

Overall the 2019/20 season has progressed well across the major soybean growing regions, with bumper crops expected. Favorable weather conditions continued to prevail mid-to-late season. Satellite-derived data and other observations show that June and July soil moisture ranged from adequate to abundant, resulting in favorable crop growth and development. The soybean crop is currently in advanced reproductive-maturity stages, as indicated by crop models. Harvest typically begins in late September in the North China Plains and in the Northeastern provinces. About 50 percent of China's soybeans are grown in the Northeastern provinces of Heilongjiang, Jilin, and Inner Mongolia. Heilongjiang province alone accounts for about 40 percent of the national soybean output. Other major provinces include Anhui, Henan, and Shandong. *(For more information, please contact Dath.Mita@fas.usda.gov.)*

Australia Cotton: Area Forecast 47 Percent Below Last Year

USDA forecasts 2019/20 Australia cotton production at 1.4 million 480-pound bales, down 0.5 million bales (26 percent) from last month and down 0.8 million (36 percent) from last year. Harvested area is estimated at 0.2 million hectares, down 23 percent from last month, and down 47 percent from last year. Yield is forecast at 1,524 kilograms per hectare, down 4 percent from last month and 17 percent below the 5-year average.





The 47 percent decrease in cotton area from last year is due to the decrease in irrigation water availability that was exacerbated by below normal precipitation during the past five months. Irrigated cotton yields are substantially higher than dryland yields, and the difference widens in low-rainfall years. On average about 90 percent of Australia's total cotton comes from irrigated areas. Dryland planting tends to vary with the seasonal weather forecast and prices at sowing. Sorghum and cotton are the two dominant summer crops in

eastern Australia. Cotton sowing commences in October and harvest begins in April. (For more information, please contact James.Crutchfield@fas.usda.gov.)

India Cotton: Forecast Production Up 11 Percent from Last Year

USDA forecasts India cotton production for 2019/20 at 29.5 million 480-pound bales, up nearly 2 percent from last month and up 11 percent from the previous year. The increase is based on improved weather conditions in the major cotton areas of Gujarat and Maharashtra. Harvested area is estimated at 12.7 million hectares, up slightly from last month and last year. Yield is forecast at 506 kilograms per hectare, up 10 percent from last year.

Yield is expected to bounce back from last year's drought. Although the Southwest Monsoon was underperforming early in the season, it resumed and progressed in late July to the major cotton areas in central India: Gujarat, Maharashtra and Madhya Pradesh. Currently, the crop is in the critical flowering stage in central India. Normalized

Irrigated cotton in good condition at flowering stage

Photo courtesy of USDA Mumbai taken early September 2019, Southwest of Ahmedabad in Central Gujarat



USDA Foreign Agricultural Service
 Office of Global Analysis
 International Production Assessment Division

Difference Vegetation Index (NDVI) analysis shows strong crop vigor in both Gujarat and Maharashtra. USDA's Mumbai Agricultural office personnel traveled to Gujarat the first week of September. They reported that conditions were good to excellent in Gujarat.

According to the *All India Crop Situation* report from September 5, planting progress is up 6 percent from last year and up 8 percent from the 5-year average. This 6 percent increase is due to the Southwest monsoon resuming in the cotton producing areas along with higher domestic prices. Planting is complete in the major central cotton areas, but only beginning in the southern region. The northern states will begin harvesting at the end of September. (*For more information, please contact Arnella.Trent@fas.usda.gov.*)



**World Agricultural Production
U.S. Department of Agriculture**

Foreign Agricultural Service / Office of Global Analysis
International Production Assessment Division (IPAD)

Ag Box 1051, Room 4630, South Building

Washington, DC 20250-1051

<https://ipad.fas.usda.gov/>

Telephone: (202) 720-1662

Fax: (202) 720-1158

This report uses information from the Foreign Agricultural Service’s (FAS) global network of agricultural attachés and counselors, official statistics of foreign governments and other foreign source materials, and the analysis of economic data and satellite imagery. Estimates of foreign area, yield, and production are from the International Production Assessment Division, FAS, and are reviewed by USDA’s Inter-Agency Commodity Estimates Committee. Estimates of U.S. area, yield, and production are from USDA’s National Agricultural Statistics Service. Numbers within the report may not add to totals because of rounding. This report reflects official USDA estimates released in the World Agricultural Supply and Demand Estimates (WASDE-584), September 12, 2019.

Printed copies are available from the National Technical Information Service. Download an order form at http://www.ntis.gov/products/specialty/usda/fas_a-g.asp, or call NTIS at 1-800-363-2068.

The FAS International Production Assessment Division prepared this report. The next issue of World Agricultural Production will be released after 12:00 p.m. Eastern Time, October 10, 2019.

Conversion Table

Metric tons to bushels

Wheat, soybeans	=	MT * 36.7437
Corn, sorghum, rye	=	MT * 39.36825
Barley	=	MT * 45.929625
Oats	=	MT * 68.894438

Metric tons to 480-lb bales

Cotton	=	MT * 4.592917
--------	---	---------------

Metric tons to hundredweight

Rice	=	MT * 22.04622
------	---	---------------

Area & weight

1 hectare	=	2.471044 acres
1 kilogram	=	2.204622 pounds



For further information, contact:
U.S. Department of Agriculture
Foreign Agricultural Service
Office of Global Analysis
International Production Assessment Division
Ag Box 1051, Room 4630, South Building
Washington, DC 20250-1051

Telephone: (202) 720-1662

Fax: (202) 720-1158

GENERAL INFORMATION

Director	Ronald Frantz	202-720-4056	ronald.frantz@fas.usda.gov
Deputy Director	Robert Tetrault	202-720-1071	robert.tetrault@fas.usda.gov
Administrative Assistant	Dionndra Williams	202-720-1662	dionndra.williams@usda.gov
USDA Remote Sensing Advisor	Glenn Bethel	202-720-1280	glenn.bethel@fas.usda.gov
Sr. Analyst/Technical Lead	Curt Reynolds, Ph.D.	202-690-0134	curt.reynolds@fas.usda.gov
Sr. Analyst/ Satellite Imagery	Dath Mita, Ph.D.	202-720-7339	dath.mita@fas.usda.gov
Archives Manager/Technical Lead			
Sr. Analyst/ Global Special	Jim Crutchfield	202-690-0135	james.crutchfield@fas.usda.gov
Projects Manager/Technical Lead			
Sr. Analyst/Technical Lead	Vacant		
GIS Mapping/Imagery Specialist	Lisa Colson	202-720-6652	lisa.colson@fas.usda.gov
WAP Coordinator	Ifeoma Collins	202-720-0240	ifeoma.collins@usda.gov

COUNTRY- AND REGION-SPECIFIC INFORMATION

South America, Argentina, Venezuela, and Colombia	Denise McWilliams, Ph.D.	202-720-0107	denise.mcwilliams@fas.usda.gov
Western and Central Europe, and North Africa	Bryan Purcell	202-690-0138	bryan.purcell@fas.usda.gov
Russia, Ukraine, Kazakhstan	Katie McGaughey	202-720-9210	katie.mcgaughey@fas.usda.gov
South Asia, Sri Lanka	Arnella Trent	202-720-0881	arnella.trent@fas.usda.gov
Bangladesh, India, and Nepal			
East Asia, China, and Japan	Dath Mita, Ph.D.	202-720-7339	dath.mita@fas.usda.gov
Sub-Saharan Africa,	Curt Reynolds, Ph.D.	202-690-0134	curt.reynolds@fas.usda.gov
Nigeria and South Africa			
S.E. Asia, Indonesia, Thailand, Malaysia, Cambodia and Vietnam	Justin Jenkins	202-720-0419	justin.jenkins@fas.usda.gov
Central America, Mexico, and Western United States	Ifeoma Collins	202-720-0240	ifeoma.collins@usda.gov
Australia, New Zealand, Pakistan	Jim Crutchfield	202-690-0135	james.crutchfield@fas.usda.gov
Papua New Guinea and South Pacific Islands			
Middle East, Central Asia, Afghanistan	Bill Baker, Ph.D.	202-260-8109	william.baker@fas.usda.gov
Iraq, Iran, and Syria			
Canada, Caribbean,	Vacant		
Eastern United States			
Brazil	Maria Anulacion	202-720-6878	maria.anulacion@fas.usda.gov



The Foreign Agricultural Service (FAS) updates its production, supply and distribution (PSD) database for cotton, oilseeds, and grains at 12:00 p.m. on the day the *World Agricultural Supply and Demand Estimates* (WASDE) report is released. This circular is released by 12:15 p.m.

FAS Reports and Databases:

Current *World Market and Trade and World Agricultural Production* Reports (Please see Data Publications):

<https://apps.fas.usda.gov/psdonline/app/index.html#/app/home>

Archives *World Market and Trade and World Agricultural Production* Reports:

https://usda.library.cornell.edu/catalog?utf8=%E2%9C%93&search_field=all_fields&q=world+agricultural+production

Production, Supply and Distribution Database (PSD Online):

<http://apps.fas.usda.gov/psdonline/psdHome.aspx>

EU Countries Area and Production (Please see Downloadable Data Sets):

<https://apps.fas.usda.gov/psdonline/app/index.html#/app/home>

Russia Wheat, Winter/Spring Area and Production (Please see Downloadable Data Sets):

<https://apps.fas.usda.gov/psdonline/app/index.html#/app/home>

Global Agricultural Trade System (U.S. Exports and Imports):

<http://apps.fas.usda.gov/gats/default.aspx>

Export Sales Report:

<http://apps.fas.usda.gov/esrquery/>

Global Agricultural Information Network (Agricultural Attaché Reports):

<http://gain.fas.usda.gov/Pages/Default.aspx>

Other USDA Reports:

World Agricultural Supply and Demand Estimates (WASDE):

<http://www.usda.gov/oce/commodity/wasde/>

Economic Research Service:

<http://www.ers.usda.gov/topics/crops>

National Agricultural Statistics Service:

<http://www.nass.usda.gov/Publications/>

Table 01 World Crop Production Summary

Million Metric Tons

Commodity	World -	Total Foreign	North America			Former Soviet		Europea n	Asia (WAP)					South America		Selected Other			All Others
			United States	Canada -	Mexico -	Russia -	Ukraine -		China -	India -	Indo-nesia	Paki- stan	Thai- land	Argen- tina	Brazil -	Aus- tralia	South Africa	Turkey -	
---Million metric tons---																			
Wheat																			
2017/18	762.3	714.9	47.4	30.4	3.5	85.2	27.0	nr	134.3	98.5	0.0	26.6	0.0	18.5	4.3	20.9	1.5	21.0	243.2
2018/19 prel.	730.8	679.5	51.3	32.2	3.0	71.7	25.1	nr	131.4	99.9	0.0	25.1	0.0	19.5	5.4	17.3	1.9	19.0	228.1
2019/20 proj.																			
Aug	768.1	714.2	53.9	33.3	3.2	73.0	29.2	nr	132.0	101.2	0.0	25.6	0.0	20.5	5.3	21.0	1.9	19.0	249.0
Sep	765.5	711.6	53.9	33.3	3.2	72.5	28.7	nr	132.0	102.2	0.0	25.6	0.0	20.5	5.3	19.0	1.9	19.0	248.4
Coarse Grains																			
2017/18	1,358.9	974.5	384.4	26.2	33.2	41.7	34.1	nr	265.7	46.9	11.9	6.2	5.1	39.3	85.1	12.2	13.6	12.3	341.0
2018/19 prel.	1,395.3	1,015.3	379.9	26.2	32.5	35.0	44.5	nr	265.4	42.8	12.0	6.6	5.5	59.2	104.2	10.9	12.1	13.3	345.1
2019/20 proj.																			
Aug	1,398.8	1,031.9	366.9	29.2	33.1	37.9	46.2	nr	262.5	45.9	12.7	6.6	5.3	58.1	104.5	12.7	14.6	14.3	348.5
Sep	1,396.4	1,032.1	364.3	28.6	33.1	39.4	46.2	nr	262.5	46.0	12.7	6.6	5.3	57.7	104.2	12.0	14.6	14.3	349.1
Rice, Milled																			
2017/18	494.9	489.2	5.7	0.0	0.2	0.6	0.0	nr	148.9	112.8	37.0	7.5	20.6	0.9	8.2	0.5	0.0	0.5	151.6
2018/19 prel.	498.9	491.8	7.1	0.0	0.2	0.7	0.0	nr	148.5	116.4	36.7	7.4	20.3	0.8	7.1	0.0	0.0	0.6	153.0
2019/20 proj.																			
Aug	497.9	491.3	6.5	0.0	0.2	0.7	0.0	nr	146.0	115.0	37.4	7.5	20.5	0.8	7.2	0.1	0.0	0.6	155.3
Sep	494.2	488.3	5.9	0.0	0.2	0.7	0.0	nr	146.0	112.0	37.4	7.5	20.5	0.8	7.1	0.1	0.0	0.6	155.3
Total Grains																			
2017/18	2,616.0	2,178.6	437.4	56.6	36.9	127.5	61.1	nr	548.9	258.2	48.9	40.3	25.6	58.7	97.5	33.6	15.1	33.8	735.7
2018/19 prel.	2,625.0	2,186.7	438.3	58.4	35.7	107.4	69.6	nr	545.3	259.1	48.7	39.1	25.8	79.5	116.7	28.3	14.0	32.9	726.2
2019/20 proj.																			
Aug	2,664.8	2,237.4	427.3	62.5	36.5	111.6	75.4	nr	540.5	262.1	50.1	39.7	25.8	79.3	117.0	33.8	16.5	33.9	752.8
Sep	2,656.2	2,232.1	424.1	61.9	36.5	112.6	74.9	nr	540.5	260.1	50.1	39.7	25.8	79.0	116.7	31.1	16.5	33.9	752.8
Oilseeds																			
2017/18	580.8	449.3	131.5	29.1	1.3	15.5	19.8	nr	59.6	35.4	13.8	4.0	1.0	42.5	125.8	5.4	2.6	3.2	90.4
2018/19 prel.	600.7	466.9	133.9	27.7	1.3	18.7	22.3	nr	59.9	36.5	14.1	3.8	1.0	61.0	121.9	2.9	2.0	3.5	90.4
2019/20 proj.																			
Aug	580.9	469.4	111.5	26.3	1.3	19.4	22.5	nr	61.7	36.5	14.4	3.9	1.1	58.4	127.7	3.3	2.4	3.5	87.0
Sep	579.5	469.3	110.2	26.7	1.3	19.4	22.2	nr	61.8	37.4	14.4	3.9	1.1	58.4	127.7	2.8	2.4	3.4	86.4
Cotton																			
2017/18	123.8	102.9	20.9	0.0	1.6	0.0	0.0	1.5	27.5	29.0	0.0	8.2	0.0	0.8	9.2	4.8	0.2	4.0	16.1
2018/19 prel.	119.0	100.7	18.4	0.0	1.7	0.0	0.0	1.7	27.8	26.5	0.0	7.6	0.0	1.1	12.8	2.2	0.2	3.7	15.3
2019/20 proj.																			
Aug	125.6	103.1	22.5	0.0	1.7	0.0	0.0	1.7	27.8	29.0	0.0	8.0	0.0	1.0	12.0	1.9	0.2	4.1	15.7
Sep	124.9	103.0	21.9	0.0	1.6	0.0	0.0	1.7	27.8	29.5	0.0	8.0	0.0	1.0	12.0	1.4	0.2	4.1	15.8

1/ Includes wheat, coarse grains, and rice (milled) shown above.

Table 02 Wheat Area, Yield, and Production

Country / Region	Area (Million hectares)				Yield (Metric tons per hectare)				Production (Million metric tons)				Change in Production			
	2017/18	Prel.	2019/20 Proj.		2017/18	Prel.	2019/20 Proj.		2017/18	Prel.	2019/20 Proj.		From last month		From last year	
		2018/19	Aug	Sep		2018/19	Aug	Sep		2018/19	Aug	Sep	MMT	Percent	MMT	Percent
World	218.28	215.29	218.78	218.22	3.49	3.39	3.51	3.51	762.26	730.84	768.07	765.53	-2.55	-0.33	34.69	4.75
United States	15.20	16.03	15.54	15.54	3.12	3.20	3.47	3.47	47.38	51.29	53.89	53.89	0.00	0.00	2.61	5.08
Total Foreign	203.09	199.26	203.24	202.68	3.52	3.41	3.51	3.51	714.88	679.55	714.18	711.64	-2.55	-0.36	32.09	4.72
European Union - 28	26.16	25.58	26.15	26.10	5.78	5.35	5.74	5.79	151.13	136.86	150.00	151.00	1.00	0.67	14.14	10.33
China	24.51	24.27	24.10	24.10	5.48	5.42	5.48	5.48	134.33	131.43	132.00	132.00	0.00	0.00	0.57	0.43
South Asia																
India	30.79	29.65	29.85	29.85	3.20	3.37	3.39	3.42	98.51	99.87	101.20	102.19	0.99	0.98	2.32	2.32
Pakistan	9.05	8.80	8.80	8.80	2.94	2.85	2.91	2.91	26.60	25.10	25.60	25.60	0.00	0.00	0.50	1.99
Afghanistan	2.10	2.00	2.30	2.30	2.00	1.80	2.17	2.17	4.20	3.60	5.00	5.00	0.00	0.00	1.40	38.89
Nepal	0.77	0.76	0.76	0.76	2.31	2.35	2.35	2.35	1.78	1.79	1.79	1.79	0.00	0.00	0.00	0.00
Former Soviet Union - 12																
Russia	27.37	26.34	27.00	27.00	3.11	2.72	2.70	2.69	85.17	71.69	73.00	72.50	-0.50	-0.68	0.82	1.14
Russia Winter	14.67	14.91	15.20	15.20	4.17	3.52	3.55	3.55	61.15	52.47	54.00	54.00	0.00	0.00	1.53	2.92
Russia Spring	12.71	11.44	11.80	11.80	1.89	1.68	1.61	1.57	24.01	19.22	19.00	18.50	-0.50	-2.63	-0.72	-3.72
Ukraine	6.64	6.72	7.05	7.05	4.06	3.73	4.14	4.07	26.98	25.06	29.20	28.70	-0.50	-1.71	3.64	14.54
Kazakhstan	11.91	11.35	11.40	11.25	1.24	1.23	1.14	1.02	14.80	13.95	13.00	11.50	-1.50	-11.54	-2.45	-17.54
Uzbekistan	1.44	1.40	1.40	1.40	4.79	4.29	4.86	4.86	6.90	6.00	6.80	6.80	0.00	0.00	0.80	13.33
Belarus	0.72	0.66	0.75	0.75	3.65	2.75	3.83	3.83	2.62	1.82	2.88	2.88	0.00	0.00	1.06	58.40
Canada	8.98	9.88	9.70	9.70	3.38	3.26	3.43	3.43	30.38	32.20	33.30	33.30	0.00	0.00	1.10	3.41
South America																
Argentina	5.80	6.05	6.30	6.30	3.19	3.22	3.25	3.25	18.50	19.50	20.50	20.50	0.00	0.00	1.00	5.13
Brazil	1.92	2.04	2.10	2.05	2.23	2.66	2.52	2.59	4.26	5.43	5.30	5.30	0.00	0.00	-0.13	-2.36
Uruguay	0.19	0.20	0.23	0.23	2.28	3.68	3.30	3.30	0.44	0.73	0.76	0.76	0.00	0.00	0.03	4.40
Australia	10.92	10.16	11.00	10.70	1.92	1.70	1.91	1.78	20.94	17.30	21.00	19.00	-2.00	-9.52	1.70	9.84
Africa																
Egypt	1.32	1.32	1.37	1.37	6.40	6.40	6.40	6.40	8.45	8.45	8.77	8.77	0.00	0.00	0.32	3.79
Morocco	3.32	2.85	2.75	2.75	2.14	2.58	1.60	1.60	7.09	7.34	4.40	4.40	0.00	0.00	-2.94	-40.05
Ethiopia	1.72	1.70	1.70	1.70	2.81	2.65	2.71	2.71	4.83	4.50	4.60	4.60	0.00	0.00	0.10	2.22
Algeria	1.60	2.07	2.10	2.10	1.50	1.90	1.90	1.90	2.40	3.94	4.00	4.00	0.00	0.00	0.06	1.52
Middle East																
Turkey	7.80	7.62	7.20	7.20	2.69	2.50	2.64	2.64	21.00	19.00	19.00	19.00	0.00	0.00	0.00	0.00
Iran	6.70	6.70	6.70	6.70	2.09	2.16	2.51	2.51	14.00	14.50	16.80	16.80	0.00	0.00	2.30	15.86
Iraq	2.20	1.70	2.40	2.40	1.82	1.76	2.00	2.00	4.00	3.00	4.80	4.80	0.00	0.00	1.80	60.00
Syria	1.10	1.10	1.60	1.60	2.00	1.82	3.00	3.00	2.20	2.00	4.80	4.80	0.00	0.00	2.80	140.00
Mexico	0.67	0.54	0.61	0.61	5.24	5.56	5.25	5.25	3.49	3.00	3.20	3.20	0.00	0.00	0.20	6.67
Serbia	0.54	0.68	0.60	0.60	4.26	5.04	4.83	4.83	2.30	3.40	2.90	2.90	0.00	0.00	-0.50	-14.71
Others	6.86	7.12	7.32	7.31	2.56	2.54	2.68	2.67	17.57	18.11	19.59	19.56	-0.04	-0.18	1.45	7.98

Table 03 Total Coarse Grain Area, Yield, and Production

Country / Region	Area (Million hectares)				Yield (Metric tons per hectare)				Production (Million metric tons)				Change in Production			
	Prel.		2019/20 Proj.		Prel.		2019/20 Proj.		Prel.		2019/20 Proj.		From last month		From last year	
	2017/18	2018/19	Aug	Sep	2017/18	2018/19	Aug	Sep	2017/18	2018/19	Aug	Sep	MMT	Percent	MMT	Percent
World	328.72	326.96	332.03	332.12	4.13	4.27	4.21	4.20	1,358.87	1,395.25	1,398.85	1,396.45	-2.40	-0.17	1.19	0.09
United States	36.76	36.39	36.56	36.54	10.46	10.44	10.04	9.97	384.39	379.92	366.93	364.30	-2.63	-0.72	-15.62	-4.11
Total Foreign	291.96	290.57	295.47	295.58	3.34	3.49	3.49	3.49	974.49	1,015.33	1,031.92	1,032.15	0.23	0.02	16.81	1.66
China	44.57	44.67	43.65	43.65	5.96	5.94	6.01	6.01	265.72	265.41	262.48	262.48	0.00	0.00	-2.93	-1.10
European Union	28.97	29.23	29.75	29.84	5.25	5.06	5.28	5.29	152.12	147.90	156.99	157.81	0.82	0.52	9.92	6.70
South America																
Brazil	17.83	18.69	19.42	19.33	4.77	5.58	5.38	5.39	85.06	104.18	104.48	104.23	-0.25	-0.24	0.05	0.05
Argentina	7.10	8.20	8.18	8.05	5.54	7.22	7.10	7.17	39.32	59.18	58.06	57.73	-0.33	-0.57	-1.46	-2.46
Former Soviet Union - 12																
Russia	14.59	14.03	14.28	14.28	2.86	2.50	2.65	2.76	41.72	35.00	37.88	39.38	1.50	3.96	4.38	12.51
Ukraine	7.59	7.58	8.01	8.01	4.49	5.87	5.76	5.77	34.07	44.50	46.15	46.20	0.05	0.11	1.70	3.81
Kazakhstan	2.49	2.97	2.95	3.41	1.79	1.76	1.69	1.52	4.45	5.23	4.99	5.19	0.21	4.11	-0.04	-0.80
Belarus	1.00	0.97	0.85	0.85	3.30	2.56	3.59	3.59	3.29	2.49	3.05	3.05	0.00	0.00	0.56	22.54
Africa																
Nigeria	14.57	14.30	14.40	14.40	1.33	1.39	1.38	1.38	19.44	19.92	19.90	19.90	0.00	0.00	-0.02	-0.10
South Africa	2.79	2.81	3.12	3.12	4.86	4.32	4.69	4.69	13.55	12.13	14.60	14.60	0.00	0.00	2.47	20.37
Tanzania	5.32	5.35	5.35	5.35	1.22	1.22	1.24	1.24	6.47	6.55	6.65	6.65	0.00	0.00	0.10	1.53
Burkina	3.85	3.85	3.85	3.85	0.97	1.25	1.14	1.14	3.73	4.82	4.40	4.40	0.00	0.00	-0.42	-8.69
Ethiopia	5.49	5.59	5.60	5.60	2.90	2.95	2.91	2.91	15.93	16.50	16.30	16.30	0.00	0.00	-0.20	-1.21
Egypt	1.02	1.07	1.12	1.12	7.09	7.14	7.18	7.18	7.26	7.66	8.06	8.06	0.00	0.00	0.40	5.22
Mali	4.78	4.50	4.50	4.50	1.36	1.54	1.18	1.18	6.51	6.94	5.30	5.30	0.00	0.00	-1.64	-23.58
India	24.17	22.02	23.66	23.66	1.94	1.95	1.94	1.94	46.94	42.84	45.94	45.95	0.02	0.03	3.11	7.26
Southeast Asia																
Indonesia	3.65	3.70	3.90	3.90	3.26	3.24	3.26	3.26	11.90	12.00	12.70	12.70	0.00	0.00	0.70	5.83
Philippines	2.60	2.48	2.55	2.55	3.10	3.07	3.18	3.18	8.08	7.61	8.10	8.10	0.00	0.00	0.49	6.47
Vietnam	1.04	0.95	1.00	1.00	4.72	4.80	4.85	4.85	4.91	4.56	4.85	4.85	0.00	0.00	0.29	6.36
Thailand	1.15	1.26	1.22	1.22	4.39	4.35	4.31	4.31	5.05	5.47	5.25	5.25	0.00	0.00	-0.22	-4.02
Mexico	9.07	8.85	9.21	9.21	3.66	3.67	3.59	3.59	33.19	32.50	33.10	33.10	0.00	0.00	0.60	1.85
Canada	4.74	5.00	5.52	5.52	5.54	5.24	5.29	5.17	26.24	26.19	29.21	28.56	-0.65	-2.23	2.37	9.03
Australia	5.59	5.03	5.74	5.59	2.18	2.17	2.21	2.15	12.19	10.93	12.70	12.00	-0.70	-5.51	1.06	9.71
Middle East																
Turkey	4.15	4.34	4.53	4.53	2.96	3.05	3.16	3.16	12.27	13.25	14.30	14.30	0.00	0.00	1.05	7.92
Iran	1.78	1.73	1.91	1.91	2.43	2.32	2.63	2.63	4.34	4.02	5.02	5.02	0.00	0.00	1.00	24.88
Others	72.06	71.42	71.22	71.16	1.54	1.65	1.57	1.56	110.74	117.56	111.48	111.05	-0.43	-0.39	-6.51	-5.54

World and Selected Countries and Regions; Coarse Grain includes: Barley, Corn, Millet, Mixed Grains, Oats, Rye and Sorghum

Table 04 Corn Area, Yield, and Production

Country / Region	Area (Million hectares)				Yield (Metric tons per hectare)				Production (Million metric tons)				Change in Production			
	2017/18	Prel.	2019/20 Proj.		2017/18	Prel.	2019/20 Proj.		2017/18	Prel.	2019/20 Proj.		From last month		From last year	
		2018/19	Aug	Sep		2018/19	Aug	Sep		2018/19	Aug	Sep	MMT	Percent	MMT	Percent
World	191.94	191.26	192.01	191.99	5.62	5.87	5.77	5.75	1,078.08	1,122.17	1,108.24	1,104.88	-3.36	-0.30	-17.30	-1.54
United States	33.48	33.08	33.19	33.19	11.08	11.07	10.64	10.56	371.10	366.29	353.09	350.52	-2.58	-0.73	-15.77	-4.31
Total Foreign	158.45	158.18	158.82	158.80	4.46	4.78	4.75	4.75	706.98	755.88	755.15	754.36	-0.79	-0.10	-1.52	-0.20
China	42.40	42.13	41.00	41.00	6.11	6.11	6.20	6.20	259.07	257.33	254.00	254.00	0.00	0.00	-3.33	-1.29
South America																
Brazil	16.60	17.50	18.10	18.10	4.94	5.77	5.58	5.58	82.00	101.00	101.00	101.00	0.00	0.00	0.00	0.00
Argentina	5.20	6.10	6.10	6.10	6.15	8.36	8.20	8.20	32.00	51.00	50.00	50.00	0.00	0.00	-1.00	-1.96
Bolivia	0.37	0.33	0.25	0.25	2.50	2.65	2.50	2.50	0.93	0.88	0.63	0.63	0.00	0.00	-0.25	-28.57
European Union	8.26	8.27	8.64	8.65	7.51	7.77	7.50	7.50	62.02	64.22	64.80	64.80	0.00	0.00	0.58	0.91
Africa																
South Africa	2.63	2.60	2.90	2.90	4.97	4.42	4.83	4.83	13.10	11.50	14.00	14.00	0.00	0.00	2.50	21.74
Nigeria	6.54	6.50	6.50	6.50	1.68	1.69	1.69	1.69	11.00	11.00	11.00	11.00	0.00	0.00	0.00	0.00
Ethiopia	2.23	2.30	2.30	2.30	3.59	3.61	3.48	3.48	8.00	8.30	8.00	8.00	0.00	0.00	-0.30	-3.61
Egypt	0.80	0.85	0.90	0.90	8.00	8.00	8.00	8.00	6.40	6.80	7.20	7.20	0.00	0.00	0.40	5.88
Tanzania	4.20	4.20	4.20	4.20	1.27	1.29	1.31	1.31	5.35	5.40	5.50	5.50	0.00	0.00	0.10	1.85
Malawi	1.73	1.70	1.70	1.70	2.01	1.65	1.94	1.94	3.46	2.80	3.30	3.30	0.00	0.00	0.50	17.86
Zambia	1.43	1.09	0.84	0.84	2.52	2.21	2.38	2.38	3.61	2.40	2.00	2.00	0.00	0.00	-0.40	-16.49
Kenya	2.09	2.20	2.00	2.00	1.52	1.82	1.60	1.60	3.19	4.00	3.20	3.20	0.00	0.00	-0.80	-20.00
Uganda	1.19	1.20	1.20	1.20	2.54	2.33	2.50	2.50	3.02	2.80	3.00	3.00	0.00	0.00	0.20	7.14
Zimbabwe	1.88	1.72	1.62	1.62	1.15	0.99	0.48	0.48	2.16	1.70	0.78	0.78	0.00	0.00	-0.92	-54.32
Former Soviet Union - 12																
Ukraine	4.43	4.57	4.90	4.90	5.44	7.84	7.45	7.35	24.12	35.81	36.50	36.00	-0.50	-1.37	0.20	0.54
Russia	2.69	2.37	2.45	2.45	4.90	4.81	5.31	5.31	13.20	11.42	13.00	13.00	0.00	0.00	1.59	13.89
South Asia																
India	9.38	9.20	9.50	9.50	3.07	2.96	3.05	3.05	28.75	27.23	29.00	29.00	0.00	0.00	1.77	6.50
Pakistan	1.23	1.32	1.33	1.33	4.63	4.62	4.59	4.59	5.70	6.10	6.10	6.10	0.00	0.00	0.00	0.00
Nepal	0.90	0.90	0.90	0.90	2.84	2.83	2.83	2.83	2.56	2.55	2.55	2.55	0.00	0.00	0.00	0.00
Southeast Asia																
Indonesia	3.65	3.70	3.90	3.90	3.26	3.24	3.26	3.26	11.90	12.00	12.70	12.70	0.00	0.00	0.70	5.83
Philippines	2.60	2.48	2.55	2.55	3.10	3.07	3.18	3.18	8.08	7.61	8.10	8.10	0.00	0.00	0.49	6.47
Vietnam	1.04	0.95	1.00	1.00	4.72	4.80	4.85	4.85	4.91	4.56	4.85	4.85	0.00	0.00	0.29	6.36
Thailand	1.12	1.23	1.19	1.19	4.45	4.41	4.37	4.37	5.00	5.42	5.20	5.20	0.00	0.00	-0.22	-4.06
Mexico	7.32	7.10	7.30	7.30	3.77	3.76	3.70	3.70	27.57	26.70	27.00	27.00	0.00	0.00	0.30	1.12
Canada	1.41	1.43	1.40	1.40	10.02	9.70	10.00	10.00	14.10	13.89	14.00	14.00	0.00	0.00	0.12	0.83
Turkey	0.53	0.53	0.52	0.52	10.00	10.75	11.06	11.06	5.30	5.70	5.75	5.75	0.00	0.00	0.05	0.88
Others	24.60	23.72	23.63	23.60	2.46	2.77	2.62	2.61	60.51	65.79	61.99	61.71	-0.29	-0.46	-4.09	-6.21

World and Selected Countries and Regions

Table 05 Barley Area, Yield, and Production

Country / Region	Area (Million hectares)				Yield (Metric tons per hectare)				Production (Million metric tons)				Change in Production			
	Prel.		2019/20 Proj.		Prel.		2019/20 Proj.		Prel.		2019/20 Proj.		From last month		From last year	
	2017/18	2018/19	Aug	Sep	2017/18	2018/19	Aug	Sep	2017/18	2018/19	Aug	Sep	MMT	Percent	MMT	Percent
World	47.37	48.27	51.27	51.59	3.02	2.89	2.97	2.99	143.13	139.55	152.29	154.07	1.78	1.17	14.52	10.41
United States	0.79	0.80	0.94	0.94	3.93	4.17	3.97	3.97	3.12	3.33	3.75	3.75	0.00	0.00	0.42	12.45
Total Foreign	46.58	47.47	50.33	50.65	3.01	2.87	2.95	2.97	140.01	136.22	148.54	150.32	1.78	1.20	14.11	10.36
European Union	12.10	12.32	12.40	12.38	4.85	4.53	4.86	4.91	58.65	55.85	60.30	60.70	0.40	0.66	4.85	8.69
Former Soviet Union - 12																
Russia	7.71	7.78	8.25	8.25	2.62	2.15	2.24	2.42	20.21	16.74	18.50	20.00	1.50	8.11	3.26	19.50
Ukraine	2.65	2.57	2.70	2.70	3.28	2.96	3.20	3.41	8.70	7.60	8.65	9.20	0.55	6.36	1.60	20.99
Kazakhstan	2.07	2.52	2.50	2.95	1.60	1.58	1.48	1.32	3.31	3.97	3.70	3.90	0.20	5.41	-0.07	-1.79
Belarus	0.45	0.43	0.40	0.40	3.14	2.20	3.50	3.50	1.42	0.94	1.40	1.40	0.00	0.00	0.46	48.31
Azerbaijan	0.32	0.32	0.32	0.32	2.55	2.72	2.72	2.72	0.82	0.87	0.87	0.87	0.00	0.00	0.00	0.00
Canada	2.11	2.40	2.70	2.70	3.73	3.50	3.78	3.67	7.89	8.38	10.20	9.90	-0.30	-2.94	1.52	18.14
Australia	4.12	3.72	4.20	4.10	2.24	2.23	2.19	2.10	9.25	8.31	9.20	8.60	-0.60	-6.52	0.29	3.49
Middle East																
Turkey	3.40	3.60	3.80	3.80	1.88	1.94	2.11	2.11	6.40	7.00	8.00	8.00	0.00	0.00	1.00	14.29
Iran	1.60	1.55	1.70	1.70	1.94	1.81	2.12	2.12	3.10	2.80	3.60	3.60	0.00	0.00	0.80	28.57
Iraq	0.78	0.60	1.20	1.20	1.26	1.30	1.33	1.33	0.98	0.78	1.60	1.60	0.00	0.00	0.82	105.13
Syria	0.80	0.80	1.20	1.20	0.97	0.50	1.00	1.00	0.78	0.40	1.20	1.20	0.00	0.00	0.80	200.00
Africa																
Ethiopia	0.96	1.00	1.00	1.00	2.13	2.20	2.30	2.30	2.03	2.20	2.30	2.30	0.00	0.00	0.10	4.55
Morocco	1.89	1.60	1.45	1.45	1.30	1.82	0.69	0.69	2.47	2.91	1.00	1.00	0.00	0.00	-1.91	-65.64
Algeria	0.76	1.03	1.03	1.03	1.27	1.90	2.00	2.00	0.97	1.95	2.05	2.05	0.00	0.00	0.10	5.13
Tunisia	0.39	0.31	0.40	0.40	1.02	0.99	1.63	1.63	0.40	0.31	0.65	0.65	0.00	0.00	0.34	109.68
South Africa	0.09	0.12	0.12	0.12	3.37	3.55	3.54	3.54	0.31	0.42	0.43	0.43	0.00	0.00	0.00	0.71
South America																
Argentina	0.94	1.20	1.20	1.20	4.00	4.22	4.00	4.00	3.74	5.06	4.80	4.80	0.00	0.00	-0.26	-5.14
Uruguay	0.15	0.15	0.17	0.17	2.52	3.83	3.82	3.82	0.39	0.58	0.63	0.63	0.00	0.00	0.06	9.57
Brazil	0.11	0.11	0.12	0.12	2.61	3.16	3.02	3.02	0.28	0.35	0.35	0.35	0.00	0.00	0.00	-1.13
India	0.66	0.66	0.66	0.66	2.66	2.69	2.62	2.64	1.75	1.78	1.74	1.75	0.02	0.86	-0.03	-1.74
China	0.33	0.45	0.47	0.47	3.29	4.11	4.15	4.15	1.09	1.85	1.95	1.95	0.00	0.00	0.10	5.41
Mexico	0.36	0.35	0.36	0.36	2.81	2.82	2.81	2.81	1.01	1.00	1.01	1.01	0.00	0.00	0.01	1.41
Afghanistan	0.07	0.06	0.18	0.18	1.40	0.95	1.39	1.39	0.10	0.06	0.25	0.25	0.00	0.00	0.19	338.60
Others	1.76	1.83	1.81	1.81	2.27	2.25	2.30	2.32	4.00	4.11	4.17	4.19	0.02	0.46	0.08	1.92

World and Selected Countries and Regions

Table 06 Oats Area, Yield, and Production

Country / Region	Area (Million hectares)				Yield (Metric tons per hectare)				Production (Million metric tons)				Change in Production			
	2017/18	Prel.	2019/20 Proj.		2017/18	Prel.	2019/20 Proj.		2017/18	Prel.	2019/20 Proj.		From last month		From last year	
		2018/19	Aug	Sep		2018/19	Aug	Sep		2018/19	Aug	Sep	MMT	Percent	MMT	Percent
World	9.87	9.69	9.65	9.46	2.40	2.26	2.48	2.42	23.70	21.86	23.89	22.91	-0.99	-4.12	1.05	4.78
United States	0.33	0.35	0.37	0.37	2.22	2.33	2.38	2.38	0.72	0.82	0.88	0.88	0.00	0.00	0.06	7.48
Total Foreign	9.54	9.34	9.28	9.09	2.41	2.25	2.48	2.42	22.98	21.05	23.02	22.03	-0.99	-4.28	0.98	4.68
European Union	2.67	2.71	2.60	2.60	3.02	2.85	3.14	3.12	8.06	7.72	8.18	8.10	-0.08	-0.98	0.38	4.93
Former Soviet Union - 12																
Russia	2.78	2.73	2.40	2.40	1.96	1.73	1.79	1.79	5.45	4.72	4.30	4.30	0.00	0.00	-0.42	-8.80
Ukraine	0.21	0.20	0.18	0.18	2.31	2.14	2.39	2.39	0.48	0.42	0.43	0.43	0.00	0.00	0.01	1.65
Belarus	0.15	0.15	0.15	0.15	3.33	2.26	3.00	3.00	0.50	0.34	0.45	0.45	0.00	0.00	0.11	31.58
Kazakhstan	0.21	0.24	0.23	0.24	1.34	1.43	1.47	1.45	0.29	0.34	0.33	0.34	0.01	3.03	0.00	1.19
Canada	1.05	1.01	1.20	1.20	3.55	3.42	3.63	3.33	3.73	3.44	4.35	4.00	-0.35	-8.05	0.56	16.41
South America																
Argentina	0.22	0.22	0.25	0.14	2.24	2.40	2.60	2.59	0.49	0.52	0.65	0.35	-0.30	-46.15	-0.17	-32.17
Brazil	0.34	0.38	0.38	0.38	1.86	2.11	2.17	2.17	0.63	0.80	0.83	0.83	0.00	0.00	0.03	3.77
Chile	0.11	0.08	0.10	0.07	5.31	5.13	5.50	5.50	0.57	0.39	0.55	0.39	-0.17	-30.00	0.00	0.00
Uruguay	0.03	0.03	0.01	0.01	1.52	2.04	1.86	1.86	0.04	0.05	0.03	0.03	0.00	0.00	-0.03	-50.94
Oceania																
Australia	0.87	0.68	0.80	0.75	1.40	1.31	1.63	1.60	1.23	0.89	1.30	1.20	-0.10	-7.69	0.31	35.14
New Zealand	0.01	0.01	0.01	0.01	5.83	5.00	5.50	5.50	0.04	0.03	0.03	0.03	0.00	0.00	0.01	32.00
China	0.48	0.50	0.53	0.53	1.16	1.15	1.19	1.19	0.55	0.58	0.63	0.63	0.00	0.00	0.05	8.70
Africa																
Algeria	0.09	0.09	0.09	0.09	1.29	1.29	1.29	1.29	0.11	0.11	0.11	0.11	0.00	0.00	0.00	0.00
Morocco	0.03	0.05	0.05	0.05	1.17	1.40	0.89	0.89	0.04	0.06	0.04	0.04	0.00	0.00	-0.02	-36.51
South Africa	0.02	0.02	0.03	0.03	1.53	1.65	1.60	1.60	0.02	0.03	0.04	0.04	0.00	0.00	0.01	21.21
Other Europe																
Norway	0.07	0.07	0.07	0.07	4.16	2.09	4.29	4.29	0.28	0.14	0.30	0.30	0.00	0.00	0.16	108.33
Serbia	0.03	0.03	0.03	0.03	2.17	2.17	2.17	2.17	0.07	0.07	0.07	0.07	0.00	0.00	0.00	0.00
Albania	0.02	0.01	0.01	0.01	2.27	2.08	2.14	2.14	0.03	0.03	0.03	0.03	0.00	0.00	0.00	11.11
Bosnia and Herzegovina	0.01	0.01	0.01	0.01	2.73	2.79	3.00	3.00	0.03	0.04	0.04	0.04	0.00	0.00	0.00	7.69
Turkey	0.11	0.10	0.10	0.10	2.21	2.30	2.30	2.30	0.25	0.23	0.23	0.23	0.00	0.00	0.00	0.00
Mexico	0.04	0.05	0.05	0.05	1.64	2.06	1.80	1.80	0.07	0.10	0.09	0.09	0.00	0.00	-0.01	-12.62
Others	0.01	0.02	0.01	0.01	1.79	2.00	1.86	1.86	0.03	0.03	0.03	0.03	0.00	0.00	0.00	-13.33

World and Selected Countries and Regions

Table 07 Rye Area, Yield, and Production

Country / Region	Area (Million hectares)				Yield (Metric tons per hectare)				Production (Million metric tons)				Change in Production			
	2017/18	Prel.	2019/20 Proj.		2017/18	Prel.	2019/20 Proj.		2017/18	Prel.	2019/20 Proj.		From last month		From last year	
		2018/19	Aug	Sep		2018/19	Aug	Sep		2018/19	Aug	Sep	MMT	Percent	MMT	Percent
World	4.02	3.73	3.62	3.72	3.06	2.68	3.11	3.16	12.31	10.01	11.28	11.74	0.47	4.12	1.74	17.34
United States	0.12	0.11	0.12	0.12	2.15	1.95	1.89	1.89	0.26	0.21	0.23	0.23	0.00	0.00	0.02	7.01
Total Foreign	3.90	3.62	3.50	3.60	3.09	2.70	3.15	3.20	12.05	9.79	11.05	11.51	0.47	4.21	1.72	17.57
European Union	1.93	1.92	1.96	2.07	3.83	3.23	3.83	3.86	7.41	6.20	7.50	8.00	0.50	6.67	1.80	29.03
Former Soviet Union - 12																
Russia	1.17	0.96	0.83	0.83	2.17	2.00	1.94	1.94	2.54	1.91	1.60	1.60	0.00	0.00	-0.31	-16.41
Belarus	0.26	0.25	0.20	0.20	2.62	2.00	3.25	3.25	0.67	0.50	0.65	0.65	0.00	0.00	0.15	29.22
Ukraine	0.17	0.15	0.11	0.11	2.97	2.66	2.73	2.73	0.51	0.40	0.30	0.30	0.00	0.00	-0.10	-24.24
Kazakhstan	0.03	0.02	0.03	0.02	1.26	1.05	1.20	1.25	0.04	0.02	0.03	0.03	-0.01	-16.67	0.00	8.70
Turkey	0.10	0.11	0.11	0.11	3.17	2.91	2.91	2.91	0.32	0.32	0.32	0.32	0.00	0.00	0.00	0.00
Canada	0.10	0.08	0.13	0.13	3.39	2.99	3.08	3.08	0.34	0.24	0.40	0.40	0.00	0.00	0.16	69.49
South America																
Chile	0.00	0.00	0.00	0.00	5.00	5.00	5.00	5.00	0.01	0.01	0.01	0.01	0.00	0.00	0.00	0.00
Argentina	0.05	0.05	0.05	0.04	1.91	2.08	2.10	2.14	0.09	0.10	0.11	0.08	-0.03	-28.57	-0.03	-25.00
Other Europe																
Bosnia and Herzegovina	0.00	0.00	0.00	0.00	3.67	2.75	3.50	3.50	0.01	0.01	0.01	0.01	0.00	0.00	0.00	27.27
Switzerland	0.00	0.00	0.00	0.00	5.50	5.50	5.50	5.50	0.01	0.01	0.01	0.01	0.00	0.00	0.00	0.00
Serbia	0.00	0.00	0.00	0.00	2.50	2.50	2.50	2.50	0.01	0.01	0.01	0.01	0.00	0.00	0.00	0.00
Australia	0.04	0.04	0.04	0.04	0.75	0.68	0.68	0.68	0.03	0.03	0.03	0.03	0.00	0.00	0.00	0.00
Others	0.04	0.03	0.04	0.04	1.84	1.00	1.87	1.87	0.07	0.03	0.07	0.07	0.00	0.00	0.04	121.88

World and Selected Countries and Regions

Table 08 Sorghum Area, Yield, and Production

Country / Region	Area (Million hectares)				Yield (Metric tons per hectare)				Production (Million metric tons)				Change in Production			
	Prel.		2019/20 Proj.		Prel.		2019/20 Proj.		Prel.		2019/20 Proj.		From last month		From last year	
	2017/18	2018/19	Aug	Sep	2017/18	2018/19	Aug	Sep	2017/18	2018/19	Aug	Sep	MMT	Percent	MMT	Percent
World	40.28	39.89	41.18	41.07	1.43	1.49	1.44	1.44	57.69	59.28	59.48	59.17	-0.31	-0.51	-0.11	-0.19
United States	2.04	2.05	1.94	1.92	4.50	4.53	4.64	4.66	9.19	9.27	8.99	8.93	-0.06	-0.61	-0.34	-3.67
Total Foreign	38.24	37.84	39.24	39.15	1.27	1.32	1.29	1.28	48.50	50.01	50.49	50.24	-0.25	-0.50	0.23	0.46
Africa																
Nigeria	5.82	5.80	5.90	5.90	1.19	1.17	1.17	1.17	6.94	6.80	6.90	6.90	0.00	0.00	0.10	1.47
Ethiopia	1.84	1.84	1.85	1.85	2.62	2.72	2.70	2.70	4.82	5.00	5.00	5.00	0.00	0.00	0.00	0.00
Sudan	6.30	7.00	7.00	7.00	0.59	0.64	0.57	0.57	3.74	4.50	4.00	4.00	0.00	0.00	-0.50	-11.11
Burkina	1.67	1.80	1.80	1.80	0.82	1.07	1.00	1.00	1.37	1.93	1.80	1.80	0.00	0.00	-0.13	-6.74
Mali	1.39	1.50	1.50	1.50	1.03	0.98	0.87	0.87	1.42	1.47	1.30	1.30	0.00	0.00	-0.17	-11.56
Niger	3.82	3.70	3.70	3.70	0.51	0.57	0.49	0.49	1.95	2.10	1.80	1.80	0.00	0.00	-0.30	-14.29
Cameroon	0.85	0.85	0.85	0.85	1.59	1.65	1.65	1.65	1.35	1.40	1.40	1.40	0.00	0.00	0.00	0.00
Tanzania	0.78	0.80	0.80	0.80	1.02	1.00	1.00	1.00	0.80	0.80	0.80	0.80	0.00	0.00	0.00	0.00
Egypt	0.14	0.14	0.14	0.14	5.36	5.36	5.36	5.36	0.75	0.75	0.75	0.75	0.00	0.00	0.00	0.00
Uganda	0.42	0.35	0.35	0.35	0.75	0.97	0.97	0.97	0.32	0.34	0.34	0.34	0.00	0.00	0.00	0.00
Ghana	0.25	0.25	0.25	0.25	1.11	1.26	1.12	1.12	0.28	0.32	0.28	0.28	0.00	0.00	-0.04	-11.39
Mozambique	0.21	0.20	0.20	0.20	1.19	1.32	0.90	0.90	0.25	0.26	0.18	0.18	0.00	0.00	-0.08	-31.56
South Africa	0.03	0.05	0.05	0.05	3.97	3.40	2.60	2.60	0.12	0.17	0.13	0.13	0.00	0.00	-0.04	-23.53
Mexico	1.35	1.35	1.50	1.50	3.37	3.48	3.33	3.33	4.55	4.70	5.00	5.00	0.00	0.00	0.30	6.38
South America																
Argentina	0.70	0.63	0.58	0.58	4.29	3.97	4.35	4.35	3.00	2.50	2.50	2.50	0.00	0.00	0.00	0.00
Brazil	0.78	0.69	0.82	0.73	2.73	2.92	2.82	2.83	2.14	2.02	2.30	2.05	-0.25	-10.87	0.03	1.43
South Asia																
India	5.02	4.01	5.00	5.00	0.96	0.94	0.90	0.90	4.80	3.76	4.50	4.50	0.00	0.00	0.74	19.68
Pakistan	0.26	0.24	0.24	0.24	0.60	0.59	0.58	0.58	0.15	0.14	0.14	0.14	0.00	0.00	0.00	0.00
China	0.51	0.72	0.75	0.75	4.87	4.79	4.80	4.80	2.47	3.45	3.60	3.60	0.00	0.00	0.15	4.35
Australia	0.46	0.50	0.60	0.60	2.72	2.58	2.83	2.83	1.26	1.28	1.70	1.70	0.00	0.00	0.42	33.02
European Union	0.12	0.14	0.15	0.15	5.32	5.51	5.43	5.43	0.66	0.74	0.82	0.82	0.00	0.00	0.07	9.54
Others	5.52	5.28	5.22	5.22	0.98	1.06	1.01	1.01	5.39	5.58	5.26	5.26	0.00	0.00	-0.32	-5.79

World and Selected Countries and Regions

Table 09 Rice Area, Yield, and Production
World and Selected Countries and Regions

Country / Region	Area (Million hectares)				Yield (Metric tons per hectare)				Production (Million metric tons)				Change in Production			
	2017/18	Prel.	2019/20 Proj.		2017/18	Prel.	2019/20 Proj.		2017/18	Prel.	2019/20 Proj.		From last month		From last year	
		2018/19	Aug	Sep		2018/19	Aug	Sep		2018/19	Aug	Sep	MMT	Percent	MMT	Percent
World	162.08	163.43	163.24	162.09	4.56	4.56	4.56	4.55	494.86	498.95	497.86	494.22	-3.64	-0.73	-4.73	-0.95
United States	0.96	1.18	1.10	1.00	8.41	8.62	8.49	8.48	5.66	7.12	6.52	5.95	-0.57	-8.80	-1.17	-16.45
Total Foreign	161.12	162.25	162.15	161.09	4.53	4.53	4.53	4.53	489.20	491.83	491.34	488.27	-3.07	-0.62	-3.56	-0.72
East Asia																
China	30.75	30.19	30.00	30.00	6.92	7.03	6.95	6.95	148.87	148.49	146.00	146.00	0.00	0.00	-2.49	-1.68
Japan	1.56	1.55	1.55	1.55	6.87	6.78	6.82	6.82	7.79	7.65	7.70	7.70	0.00	0.00	0.05	0.65
Korea, South	0.76	0.74	0.73	0.73	7.01	6.99	7.07	7.07	3.97	3.87	3.88	3.88	0.00	0.00	0.01	0.31
Korea, North	0.48	0.50	0.50	0.50	5.09	4.18	4.18	4.18	1.57	1.36	1.36	1.36	0.00	0.00	0.00	0.00
South Asia																
India	42.90	44.50	44.00	43.00	3.94	3.92	3.92	3.91	112.76	116.42	115.00	112.00	-3.00	-2.61	-4.42	-3.80
Bangladesh	11.27	11.77	11.83	11.83	4.35	4.46	4.48	4.48	32.65	35.00	35.30	35.30	0.00	0.00	0.30	0.86
Pakistan	2.80	2.88	2.90	2.90	4.02	3.85	3.88	3.88	7.50	7.40	7.50	7.50	0.00	0.00	0.10	1.35
Nepal	1.49	1.50	1.50	1.50	3.34	3.73	3.53	3.53	3.31	3.73	3.53	3.53	0.00	0.00	-0.20	-5.36
Sri Lanka	0.77	1.10	1.00	1.00	4.30	3.96	4.25	4.50	2.25	2.96	2.89	3.06	0.17	5.88	0.10	3.38
Southeast Asia																
Indonesia	12.25	12.10	12.25	12.25	4.76	4.78	4.81	4.81	37.00	36.70	37.40	37.40	0.00	0.00	0.70	1.91
Vietnam	7.65	7.67	7.67	7.67	5.79	5.83	5.91	5.91	27.66	27.92	28.30	28.30	0.00	0.00	0.38	1.35
Thailand	10.76	10.83	10.90	10.90	2.90	2.85	2.85	2.85	20.58	20.34	20.50	20.50	0.00	0.00	0.16	0.79
Burma	7.10	7.10	7.10	7.10	2.90	2.90	2.93	2.93	13.20	13.18	13.30	13.30	0.00	0.00	0.13	0.95
Philippines	4.84	4.74	4.85	4.85	4.01	3.93	3.99	3.99	12.24	11.73	12.20	12.20	0.00	0.00	0.47	3.99
Cambodia	3.18	3.19	3.19	3.19	2.86	2.89	2.92	2.92	5.55	5.63	5.69	5.69	0.00	0.00	0.06	0.98
Laos	0.96	0.82	0.99	0.99	3.30	3.25	3.30	3.30	2.00	1.68	2.05	2.05	0.00	0.00	0.37	22.02
Malaysia	0.70	0.70	0.70	0.70	4.03	4.01	4.01	4.01	1.82	1.83	1.83	1.83	0.00	0.00	0.00	0.00
South America																
Brazil	1.97	1.70	1.70	1.68	6.12	6.18	6.24	6.25	8.20	7.14	7.21	7.14	-0.07	-0.94	0.00	0.00
Peru	0.42	0.44	0.44	0.44	7.20	7.16	7.33	7.33	2.10	2.15	2.20	2.20	0.00	0.00	0.05	2.33
Africa																
Egypt	0.76	0.46	0.50	0.50	8.18	8.78	8.84	8.84	4.30	2.80	3.05	3.05	0.00	0.00	0.25	8.93
Madagascar	1.43	1.50	1.50	1.50	2.18	2.67	2.80	2.80	1.98	2.56	2.69	2.69	0.00	0.00	0.13	5.00
Nigeria	3.60	3.60	3.60	3.60	2.06	2.11	2.16	2.16	4.66	4.79	4.90	4.90	0.00	0.00	0.11	2.34
European Union	0.43	0.41	0.42	0.42	6.71	6.76	6.89	6.89	2.01	1.94	2.01	2.01	0.00	0.00	0.07	3.45
Iran	0.57	0.58	0.58	0.58	5.33	5.25	5.25	5.25	2.01	1.99	1.99	1.99	0.00	0.00	0.00	0.00
Others	11.73	11.70	11.76	11.73	3.01	2.94	2.96	2.95	23.22	22.57	22.87	22.70	-0.17	-0.73	0.13	0.56

Yield is on a rough basis, before the milling process. Production is on a milled basis, after the milling process.

Table 10 Total Oilseed Area, Yield, and Production

World and Selected Countries and Regions

Country / Region	Area (Million hectares)				Yield (Metric tons per hectare)				Production (Million metric tons)				Change in Production			
	Prel.		2019/20 Proj.		Prel.		2019/20 Proj.		Prel.		2019/20 Proj.		From last month		From last year	
	2017/18	2018/19	Aug	Sep	2017/18	2018/19	Aug	Sep	2017/18	2018/19	Aug	Sep	MMT	Percent	MMT	Percent
World Total	--	--	--	--	--	--	--	--	580.78	600.74	580.86	579.48	-1.38	-0.24	-21.26	-3.54
Total Foreign	--	--	--	--	--	--	--	--	449.30	466.89	469.37	469.30	-0.07	-0.01	2.41	0.52
Oilseed, Copra	--	--	--	--	--	--	--	--	5.94	5.98	5.81	5.81	0.00	0.00	-0.17	-2.84
Oilseed, Palm Kernel	--	--	--	--	--	--	--	--	18.76	19.50	20.05	20.05	0.00	0.00	0.56	2.86
Major Oilseeds	247.16	247.88	244.26	244.02	2.25	2.32	2.27	2.27	556.09	575.27	555.00	553.62	-1.38	-0.25	-21.65	-3.76
United States	42.80	41.63	37.70	37.67	3.07	3.22	2.96	2.92	131.48	133.85	111.49	110.18	-1.32	-1.18	-23.68	-17.69
Foreign Oilseeds	204.36	206.26	206.56	206.35	2.08	2.14	2.15	2.15	424.60	441.41	443.51	443.44	-0.07	-0.01	2.03	0.46
South America	61.58	62.86	65.12	65.11	2.97	3.15	3.10	3.10	183.13	197.97	202.08	202.10	0.02	0.01	4.13	2.09
Brazil	36.56	37.72	38.69	38.69	3.44	3.23	3.30	3.30	125.68	121.80	127.60	127.60	0.00	0.00	5.80	4.76
Argentina	18.70	19.07	20.01	20.00	2.27	3.20	2.92	2.92	42.52	60.97	58.40	58.44	0.04	0.07	-2.53	-4.15
Paraguay	3.47	3.38	3.67	3.67	2.99	2.70	2.81	2.81	10.39	9.12	10.31	10.31	0.00	0.00	1.19	13.08
Bolivia	1.53	1.52	1.58	1.58	1.77	1.83	1.90	1.90	2.71	2.78	3.00	3.00	0.00	0.00	0.22	7.91
Uruguay	1.15	1.02	1.01	1.01	1.23	2.86	2.28	2.28	1.41	2.92	2.30	2.30	0.00	0.00	-0.62	-21.18
China	24.08	24.18	25.00	24.90	2.48	2.48	2.47	2.48	59.60	59.88	61.73	61.83	0.10	0.16	1.95	3.26
South Asia	38.34	38.96	38.96	39.06	1.02	1.02	1.03	1.05	39.02	39.90	40.04	40.95	0.91	2.28	1.05	2.63
India	34.87	35.85	35.63	35.73	0.99	1.00	1.00	1.02	34.64	35.73	35.68	36.59	0.91	2.56	0.86	2.42
Pakistan	3.11	2.75	2.98	2.98	1.27	1.37	1.32	1.32	3.96	3.75	3.94	3.94	0.00	0.00	0.19	4.96
European Union	12.41	12.39	11.21	11.18	2.85	2.64	2.76	2.73	35.34	32.76	31.00	30.55	-0.45	-1.46	-2.21	-6.76
Former Soviet Union - 12	24.37	25.48	25.33	25.28	1.66	1.80	1.84	1.83	40.45	45.73	46.62	46.22	-0.40	-0.85	0.49	1.07
Russia	10.66	12.18	12.40	12.40	1.45	1.54	1.56	1.56	15.48	18.73	19.40	19.40	0.00	0.00	0.67	3.60
Ukraine	9.57	9.23	9.03	9.03	2.07	2.42	2.49	2.46	19.81	22.31	22.50	22.20	-0.30	-1.33	-0.11	-0.50
Uzbekistan	1.25	1.10	1.05	1.05	1.21	1.17	1.14	1.12	1.51	1.28	1.20	1.18	-0.03	-2.08	-0.11	-8.42
Canada	12.23	11.69	10.62	10.72	2.38	2.37	2.48	2.49	29.10	27.67	26.35	26.65	0.31	1.16	-1.02	-3.68
Africa	21.35	22.14	21.73	21.66	0.99	1.03	0.95	0.96	21.23	22.85	20.73	20.70	-0.03	-0.14	-2.15	-9.40
Nigeria	4.09	4.09	4.07	4.07	1.31	1.36	1.16	1.16	5.34	5.58	4.70	4.70	0.00	0.00	-0.88	-15.70
South Africa	1.48	1.31	1.51	1.51	1.73	1.51	1.58	1.57	2.55	1.98	2.38	2.37	-0.01	-0.21	0.40	20.00
Tanzania	1.35	1.50	1.50	1.50	0.89	0.86	0.85	0.85	1.20	1.29	1.28	1.28	0.00	0.00	-0.01	-0.86
Southeast Asia	3.22	3.19	3.15	3.15	1.40	1.39	1.39	1.39	4.52	4.43	4.39	4.39	0.00	0.00	-0.05	-1.08
Indonesia	1.00	0.98	0.95	0.95	1.61	1.57	1.58	1.58	1.62	1.55	1.50	1.50	0.00	0.00	-0.05	-2.91
Burma	1.88	1.88	1.88	1.88	1.19	1.18	1.18	1.18	2.24	2.22	2.21	2.21	0.00	0.00	-0.01	-0.27
Australia	3.76	2.33	2.32	2.16	1.44	1.25	1.41	1.30	5.43	2.92	3.26	2.81	-0.45	-13.82	-0.12	-4.00
Turkey	1.25	1.33	1.36	1.38	2.53	2.63	2.54	2.48	3.17	3.49	3.46	3.43	-0.04	-1.04	-0.06	-1.72
Others	1.77	1.73	1.77	1.76	2.04	2.21	2.18	2.18	3.62	3.81	3.86	3.83	-0.04	-0.91	0.02	0.39

World Total and Total Foreign: (Major Oilseeds plus copra and palm kernel) Major Oilseeds: (soybeans, sunflowerseeds, peanuts(inshell), cottonseed and rapeseed)

Table 11 Soybean Area, Yield, and Production

Country / Region	Area (Million hectares)				Yield (Metric tons per hectare)				Production (Million metric tons)				Change in Production			
	Prel.		2019/20 Proj.		Prel.		2019/20 Proj.		Prel.		2019/20 Proj.		From last month		From last year	
	2017/18	2018/19	Aug	Sep	2017/18	2018/19	Aug	Sep	2017/18	2018/19	Aug	Sep	MMT	Percent	MMT	Percent
World	124.59	124.95	122.66	122.66	2.74	2.90	2.79	2.78	341.62	362.07	341.83	341.39	-0.45	-0.13	-20.68	-5.71
United States	36.24	35.66	30.70	30.70	3.31	3.47	3.26	3.22	120.07	123.66	100.16	98.87	-1.29	-1.29	-24.80	-20.05
Total Foreign	88.36	89.30	91.96	91.96	2.51	2.67	2.63	2.64	221.55	238.41	241.68	242.52	0.85	0.35	4.12	1.73
South America																
Brazil	35.15	35.90	36.90	36.90	3.47	3.26	3.33	3.33	122.00	117.00	123.00	123.00	0.00	0.00	6.00	5.13
Argentina	16.30	16.60	17.50	17.50	2.32	3.33	3.03	3.03	37.80	55.30	53.00	53.00	0.00	0.00	-2.30	-4.16
Paraguay	3.40	3.30	3.60	3.60	3.03	2.73	2.83	2.83	10.30	9.00	10.20	10.20	0.00	0.00	1.20	13.33
Bolivia	1.40	1.40	1.45	1.45	1.86	1.93	2.00	2.00	2.60	2.70	2.90	2.90	0.00	0.00	0.20	7.41
Uruguay	1.10	0.97	0.95	0.95	1.21	2.93	2.32	2.32	1.33	2.83	2.20	2.20	0.00	0.00	-0.63	-22.21
East Asia																
China	8.25	8.40	9.10	9.00	1.85	1.89	1.87	1.90	15.28	15.90	17.00	17.10	0.10	0.59	1.20	7.55
Korea, South	0.05	0.05	0.05	0.05	1.87	1.75	1.80	1.80	0.09	0.09	0.09	0.09	0.00	0.00	0.00	3.37
Korea, North	0.15	0.15	0.15	0.15	1.49	1.50	1.50	1.50	0.22	0.23	0.23	0.23	0.00	0.00	0.00	0.00
Japan	0.15	0.15	0.15	0.15	1.66	1.45	1.69	1.69	0.25	0.21	0.25	0.25	0.00	0.00	0.04	18.78
India	10.40	11.00	11.00	11.00	0.80	1.05	0.94	1.00	8.35	11.50	10.30	11.00	0.70	6.80	-0.50	-4.35
Canada	2.94	2.54	2.20	2.30	2.63	2.86	2.82	2.83	7.72	7.27	6.20	6.50	0.30	4.84	-0.77	-10.55
Former Soviet Union - 12																
Russia	2.57	2.74	2.90	2.90	1.41	1.47	1.48	1.48	3.62	4.03	4.30	4.30	0.00	0.00	0.27	6.78
Ukraine	1.98	1.73	1.55	1.55	1.97	2.58	2.45	2.32	3.89	4.46	3.80	3.60	-0.20	-5.26	-0.86	-19.30
European Union	0.93	0.93	0.91	0.91	2.74	2.88	2.91	2.86	2.54	2.66	2.65	2.60	-0.05	-1.96	-0.06	-2.40
Southeast Asia																
Indonesia	0.42	0.41	0.40	0.40	1.29	1.27	1.28	1.28	0.54	0.52	0.51	0.51	0.00	0.00	-0.01	-1.92
Vietnam	0.06	0.05	0.05	0.05	1.50	1.53	1.52	1.52	0.09	0.08	0.08	0.08	0.00	0.00	-0.01	-6.17
Thailand	0.04	0.04	0.03	0.03	1.57	1.57	1.53	1.53	0.06	0.06	0.05	0.05	0.00	0.00	0.00	-5.45
Burma	0.15	0.15	0.15	0.15	1.07	1.07	1.07	1.07	0.16	0.16	0.16	0.16	0.00	0.00	0.00	0.00
Serbia	0.20	0.22	0.22	0.22	2.30	2.84	2.73	2.73	0.46	0.63	0.60	0.60	0.00	0.00	-0.03	-4.00
Mexico	0.26	0.19	0.24	0.24	1.65	1.75	1.69	1.69	0.43	0.34	0.40	0.40	0.00	0.00	0.07	19.40
Africa																
South Africa	0.79	0.73	0.80	0.80	1.96	1.60	1.81	1.81	1.54	1.17	1.45	1.45	0.00	0.00	0.28	23.93
Nigeria	1.00	1.00	1.00	1.00	0.99	1.05	1.10	1.10	0.99	1.05	1.10	1.10	0.00	0.00	0.05	4.36
Zambia	0.23	0.19	0.20	0.20	1.56	1.58	1.43	1.43	0.35	0.30	0.28	0.28	0.00	0.00	-0.02	-7.26
Uganda	0.05	0.05	0.05	0.05	0.60	0.60	0.60	0.60	0.03	0.03	0.03	0.03	0.00	0.00	0.00	0.00
Middle East																
Iran	0.08	0.07	0.07	0.07	2.41	2.29	2.43	2.43	0.20	0.16	0.17	0.17	0.00	0.00	0.01	6.25
Turkey	0.02	0.03	0.03	0.03	3.75	3.80	3.70	3.70	0.09	0.10	0.10	0.10	0.00	0.00	0.01	5.26
Others	0.32	0.32	0.32	0.32	1.95	1.99	1.97	1.97	0.62	0.64	0.62	0.62	0.00	0.00	-0.02	-3.11

World and Selected Countries and Regions

Table 12 Cottonseed Area, Yield, and Production

Country / Region	Area (Million hectares)				Yield (Metric tons per hectare)				Production (Million metric tons)				Change in Production			
	Prel.		2019/20 Proj.		Prel.		2019/20 Proj.		Prel.		2019/20 Proj.		From last month		From last year	
	2017/18	2018/19	Aug	Sep	2017/18	2018/19	Aug	Sep	2017/18	2018/19	Aug	Sep	MMT	Percent	MMT	Percent
World	33.10	32.87	34.06	33.99	1.36	1.33	1.34	1.34	45.15	43.69	45.80	45.59	-0.21	-0.47	1.90	4.34
United States	4.49	4.13	5.11	5.06	1.30	1.24	1.24	1.21	5.83	5.11	6.32	6.14	-0.18	-2.85	1.03	20.24
Total Foreign	28.61	28.74	28.95	28.93	1.37	1.34	1.36	1.36	39.33	38.59	39.48	39.45	-0.03	-0.09	0.86	2.23
South Asia																
India	12.60	12.60	12.60	12.70	0.98	0.89	0.98	0.99	12.31	11.25	12.31	12.52	0.21	1.72	1.27	11.31
Pakistan	2.70	2.30	2.50	2.50	1.32	1.43	1.39	1.39	3.55	3.29	3.47	3.47	0.00	0.00	0.17	5.29
China	3.40	3.50	3.45	3.45	3.18	3.11	3.15	3.15	10.80	10.88	10.88	10.88	0.00	0.00	0.00	0.00
Former Soviet Union - 12																
Uzbekistan	1.25	1.10	1.05	1.05	1.21	1.17	1.14	1.12	1.51	1.28	1.20	1.18	-0.03	-2.08	-0.11	-8.42
Turkmenistan	0.55	0.55	0.55	0.55	0.96	0.65	0.73	0.77	0.53	0.36	0.40	0.42	0.02	5.00	0.06	17.98
Tajikistan	0.19	0.18	0.18	0.18	0.97	0.90	0.90	0.94	0.18	0.16	0.16	0.17	0.01	4.94	0.01	4.94
Kazakhstan	0.13	0.13	0.12	0.12	0.94	1.05	0.94	0.94	0.12	0.14	0.11	0.11	0.00	0.00	-0.03	-18.52
South America																
Brazil	1.18	1.61	1.55	1.55	2.57	2.64	2.53	2.53	3.02	4.25	3.93	3.93	0.00	0.00	-0.32	-7.55
Argentina	0.32	0.38	0.36	0.36	0.87	1.09	1.03	1.03	0.28	0.41	0.37	0.37	0.00	0.00	-0.04	-10.63
Middle East																
Turkey	0.47	0.52	0.54	0.56	2.77	2.60	2.55	2.39	1.30	1.35	1.38	1.34	-0.04	-2.62	-0.01	-0.81
Syria	0.03	0.03	0.03	0.03	2.17	2.36	2.40	2.40	0.07	0.06	0.06	0.06	0.00	0.00	0.00	1.69
Iran	0.09	0.08	0.08	0.08	0.96	1.16	1.16	1.16	0.08	0.09	0.09	0.09	0.00	0.00	0.00	0.00
Australia	0.53	0.38	0.26	0.20	2.72	1.74	2.19	2.10	1.44	0.66	0.57	0.42	-0.15	-26.32	-0.24	-36.46
European Union	0.30	0.31	0.32	0.32	1.65	1.76	1.72	1.72	0.49	0.55	0.55	0.55	0.00	0.00	0.00	-0.73
Africa																
Burkina	0.85	0.63	0.70	0.60	0.39	0.37	0.43	0.44	0.33	0.24	0.30	0.26	-0.04	-13.82	0.03	11.49
Mali	0.71	0.73	0.74	0.78	0.56	0.50	0.54	0.54	0.40	0.36	0.40	0.42	0.02	4.71	0.06	17.55
Cameroon	0.23	0.25	0.25	0.25	1.11	1.20	1.13	1.13	0.25	0.30	0.28	0.28	0.00	0.00	-0.02	-6.00
Cote d'Ivoire	0.33	0.39	0.43	0.43	0.66	0.60	0.57	0.57	0.22	0.23	0.24	0.24	0.00	0.00	0.01	2.99
Benin	0.53	0.65	0.68	0.68	0.71	0.71	0.71	0.71	0.38	0.46	0.48	0.48	0.00	0.00	0.02	3.46
Tanzania	0.35	0.50	0.50	0.50	0.29	0.37	0.35	0.35	0.10	0.19	0.18	0.18	0.00	0.00	-0.01	-5.91
Egypt	0.09	0.14	0.10	0.10	1.00	1.08	1.06	1.06	0.09	0.15	0.11	0.11	0.00	0.00	-0.05	-30.26
Nigeria	0.27	0.27	0.27	0.27	0.38	0.38	0.38	0.38	0.10	0.10	0.10	0.10	0.00	0.00	0.00	0.00
Uganda	0.08	0.08	0.08	0.08	1.91	1.40	1.45	1.45	0.15	0.11	0.11	0.11	0.00	0.00	0.00	3.81
Zimbabwe	0.20	0.20	0.20	0.20	0.52	0.38	0.36	0.36	0.10	0.08	0.07	0.07	0.00	0.00	0.00	-5.26
Sudan	0.18	0.18	0.20	0.20	1.35	1.42	1.54	1.54	0.24	0.26	0.31	0.31	0.00	0.00	0.05	20.78
Mexico	0.21	0.24	0.24	0.23	2.52	2.45	2.47	2.43	0.53	0.59	0.58	0.55	-0.04	-6.02	-0.04	-6.98
Burma	0.25	0.24	0.24	0.24	1.24	1.23	1.20	1.20	0.31	0.30	0.29	0.29	0.00	0.00	-0.01	-2.03
Others	0.63	0.59	0.76	0.76	0.72	0.86	0.74	0.73	0.45	0.51	0.56	0.56	-0.01	-0.89	0.05	10.28

World and Selected Countries and Regions

Table 13 Peanut Area, Yield, and Production

Country / Region	Area (Million hectares)				Yield (Metric tons per hectare)				Production (Million metric tons)				Change in Production			
	2017/18	Prel.	2019/20 Proj.		2017/18	Prel.	2019/20 Proj.		2017/18	Prel.	2019/20 Proj.		From last month		From last year	
		2018/19	Aug	Sep		2018/19	Aug	Sep		2018/19	Aug	Sep	MMT	Percent	MMT	Percent
World	27.04	27.34	26.28	26.31	1.72	1.69	1.69	1.69	46.58	46.17	44.31	44.52	0.21	0.48	-1.65	-3.58
United States	0.72	0.55	0.54	0.56	4.49	4.47	4.50	4.58	3.23	2.48	2.41	2.56	0.16	6.57	0.09	3.47
Total Foreign	26.32	26.78	25.75	25.75	1.65	1.63	1.63	1.63	43.35	43.69	41.90	41.96	0.06	0.13	-1.74	-3.98
China	4.61	4.56	4.60	4.60	3.71	3.73	3.80	3.80	17.09	17.00	17.50	17.50	0.00	0.00	0.50	2.94
Africa																
Nigeria	2.82	2.82	2.80	2.80	1.51	1.57	1.25	1.25	4.25	4.42	3.50	3.50	0.00	0.00	-0.92	-20.85
Sudan	2.22	3.07	2.30	2.30	0.74	0.94	0.78	0.78	1.65	2.88	1.80	1.80	0.00	0.00	-1.08	-37.59
Senegal	1.25	1.25	1.20	1.20	1.13	1.16	0.92	0.92	1.41	1.45	1.10	1.10	0.00	0.00	-0.35	-24.14
Cameroon	0.43	0.43	0.43	0.43	1.40	1.40	1.40	1.40	0.60	0.60	0.60	0.60	0.00	0.00	0.00	0.00
Ghana	0.34	0.34	0.34	0.34	1.28	1.55	1.31	1.31	0.43	0.52	0.44	0.44	0.00	0.00	-0.08	-15.38
Chad	0.77	0.77	0.77	0.77	1.13	1.16	1.10	1.10	0.87	0.89	0.85	0.85	0.00	0.00	-0.04	-4.49
Malawi	0.39	0.37	0.37	0.37	0.99	0.88	0.88	0.88	0.39	0.33	0.33	0.33	0.00	0.00	0.00	0.00
Congo (Kinshasa)	0.50	0.50	0.50	0.50	0.85	0.85	0.85	0.85	0.42	0.42	0.42	0.42	0.00	0.00	0.00	0.00
Niger	0.92	0.93	0.90	0.90	0.50	0.64	0.56	0.56	0.46	0.59	0.50	0.50	0.00	0.00	-0.09	-15.54
Mali	0.39	0.38	0.43	0.43	0.78	1.31	1.00	1.00	0.30	0.49	0.43	0.43	0.00	0.00	-0.07	-13.44
Uganda	0.43	0.43	0.43	0.43	0.71	0.71	0.71	0.71	0.30	0.30	0.30	0.30	0.00	0.00	0.00	0.00
Burkina	0.56	0.56	0.56	0.56	0.60	0.59	0.80	0.80	0.33	0.33	0.45	0.45	0.00	0.00	0.12	36.36
Guinea	0.67	0.68	0.68	0.68	1.04	1.13	1.10	1.10	0.70	0.77	0.75	0.75	0.00	0.00	-0.02	-2.60
Egypt	0.06	0.06	0.06	0.06	3.20	3.20	3.20	3.20	0.21	0.21	0.21	0.21	0.00	0.00	0.00	0.00
Central African Republic	0.10	0.10	0.10	0.10	1.50	1.50	1.50	1.50	0.15	0.15	0.15	0.15	0.00	0.00	0.00	0.00
South Africa	0.06	0.02	0.05	0.05	1.36	1.25	1.50	1.50	0.08	0.03	0.08	0.08	0.00	0.00	0.05	200.00
Mozambique	0.40	0.38	0.38	0.38	0.23	0.34	0.34	0.34	0.09	0.13	0.13	0.13	0.00	0.00	0.00	0.00
Cote d'Ivoire	0.15	0.15	0.15	0.15	1.39	1.45	1.45	1.45	0.20	0.21	0.21	0.21	0.00	0.00	0.00	0.00
Benin	0.16	0.19	0.19	0.19	0.88	1.19	0.92	0.92	0.14	0.23	0.18	0.18	0.00	0.00	-0.05	-22.57
South Asia																
India	4.89	4.70	4.50	4.50	1.36	1.00	1.16	1.16	6.65	4.70	5.20	5.20	0.00	0.00	0.50	10.64
Pakistan	0.09	0.10	0.09	0.09	0.97	0.95	0.98	0.98	0.09	0.09	0.09	0.09	0.00	0.00	0.00	1.11
Southeast Asia																
Indonesia	0.58	0.57	0.55	0.55	1.85	1.80	1.80	1.80	1.08	1.03	0.99	0.99	0.00	0.00	-0.04	-3.41
Burma	0.89	0.89	0.89	0.89	1.55	1.55	1.55	1.55	1.38	1.38	1.38	1.38	0.00	0.00	0.00	0.00
Vietnam	0.19	0.19	0.19	0.19	2.37	2.41	2.47	2.47	0.45	0.46	0.47	0.47	0.00	0.00	0.01	2.40
Thailand	0.02	0.02	0.02	0.02	1.67	1.67	1.67	1.67	0.04	0.04	0.04	0.04	0.00	0.00	0.00	0.00
South America																
Argentina	0.38	0.32	0.32	0.32	2.27	4.43	3.75	3.92	0.87	1.42	1.20	1.26	0.06	4.58	-0.16	-11.50
Brazil	0.14	0.15	0.16	0.16	3.71	2.96	3.55	3.55	0.52	0.44	0.55	0.55	0.00	0.00	0.12	26.44
Mexico	0.06	0.06	0.06	0.06	1.70	1.70	1.73	1.73	0.10	0.10	0.10	0.10	0.00	0.00	0.01	5.15
Others	1.88	1.83	1.75	1.75	1.13	1.15	1.13	1.13	2.13	2.12	1.98	1.98	0.00	0.00	-0.14	-6.48

Table 14 Sunflowerseed Area, Yield, and Production

Country / Region	Area (Million hectares)				Yield (Metric tons per hectare)				Production (Million metric tons)				Change in Production			
	2017/18	Prel.		2019/20 Proj.		2017/18	Prel.		2019/20 Proj.		2017/18	Prel.		2019/20 Proj.		
		2018/19	Aug	Sep	2018/19		Aug	Sep	2018/19	Aug		Sep	MMT	Percent	MMT	Percent
World	25.93	26.21	26.34	26.33	1.84	1.96	2.00	2.00	47.82	51.40	52.58	52.58	0.01	0.01	1.19	2.31
United States	0.54	0.50	0.54	0.54	1.80	1.94	1.87	1.87	0.97	0.96	1.00	1.00	0.00	0.00	0.04	4.06
Total Foreign	25.39	25.72	25.80	25.79	1.85	1.96	2.00	2.00	46.85	50.44	51.58	51.59	0.01	0.01	1.15	2.28
Former Soviet Union - 12																
Russia	7.15	7.94	8.00	8.00	1.45	1.60	1.63	1.63	10.36	12.71	13.00	13.00	0.00	0.00	0.29	2.28
Ukraine	6.80	6.50	6.20	6.20	2.01	2.31	2.50	2.50	13.70	15.00	15.50	15.50	0.00	0.00	0.50	3.33
Kazakhstan	0.88	0.85	0.85	0.80	1.02	1.00	1.06	1.00	0.90	0.85	0.90	0.80	-0.10	-11.11	-0.05	-5.66
European Union	4.39	4.12	4.34	4.38	2.30	2.31	2.26	2.26	10.13	9.51	9.80	9.90	0.10	1.02	0.39	4.07
South America																
Argentina	1.68	1.75	1.80	1.80	2.11	2.17	2.10	2.10	3.54	3.80	3.78	3.78	0.00	0.00	-0.02	-0.53
Uruguay	0.05	0.06	0.06	0.06	1.56	1.61	1.67	1.67	0.08	0.09	0.10	0.10	0.00	0.00	0.01	11.11
Bolivia	0.13	0.12	0.13	0.13	0.80	0.70	0.77	0.77	0.11	0.08	0.10	0.10	0.00	0.00	0.02	25.00
Brazil	0.10	0.07	0.08	0.08	1.48	1.71	1.50	1.50	0.14	0.11	0.12	0.12	0.00	0.00	0.01	8.11
Paraguay	0.03	0.03	0.03	0.03	1.66	1.69	1.70	1.70	0.05	0.05	0.05	0.05	0.00	0.00	0.00	-5.56
China	1.17	1.25	1.25	1.25	2.69	2.60	2.60	2.60	3.15	3.25	3.25	3.25	0.00	0.00	0.00	0.00
South Asia																
India	0.28	0.35	0.23	0.23	0.81	0.80	0.76	0.76	0.23	0.28	0.17	0.17	0.00	0.00	-0.11	-39.29
Pakistan	0.08	0.12	0.14	0.14	1.13	1.20	1.04	1.04	0.09	0.14	0.15	0.15	0.00	0.00	0.00	0.69
Middle East																
Turkey	0.70	0.72	0.73	0.73	2.21	2.52	2.40	2.40	1.55	1.80	1.75	1.75	0.00	0.00	-0.05	-2.78
Iran	0.04	0.04	0.04	0.04	1.08	1.08	1.08	1.08	0.04	0.04	0.04	0.04	0.00	0.00	0.00	0.00
Israel	0.01	0.01	0.01	0.01	1.60	1.60	1.60	1.60	0.02	0.02	0.02	0.02	0.00	0.00	0.00	0.00
Africa																
Egypt	0.01	0.01	0.01	0.01	2.38	2.38	2.38	2.38	0.02	0.02	0.02	0.02	0.00	0.00	0.00	0.00
Morocco	0.02	0.02	0.02	0.02	1.26	1.29	1.25	1.25	0.02	0.03	0.03	0.03	0.00	0.00	0.00	-7.41
South Africa	0.60	0.52	0.61	0.61	1.43	1.32	1.23	1.23	0.86	0.68	0.75	0.75	0.00	0.00	0.07	10.29
Burma	0.60	0.60	0.60	0.60	0.65	0.65	0.65	0.65	0.39	0.39	0.39	0.39	0.00	0.00	0.00	0.00
Canada	0.03	0.03	0.02	0.02	2.23	2.11	2.05	2.27	0.06	0.06	0.05	0.05	0.01	11.11	-0.01	-12.28
Australia	0.01	0.02	0.02	0.02	1.86	1.21	1.25	1.25	0.03	0.02	0.03	0.03	0.00	0.00	0.00	8.70
Others	0.63	0.61	0.64	0.64	2.21	2.48	2.49	2.49	1.38	1.50	1.60	1.60	0.00	0.00	0.10	6.66

World and Selected Countries and Regions

Table 15 Rapeseed Area, Yield, and Production

Country / Region	Area (Million hectares)				Yield (Metric tons per hectare)				Production (Million metric tons)				Change in Production			
	2017/18	Prel.		2019/20 Proj.		2017/18	Prel.		2019/20 Proj.		2017/18	Prel.		2019/20 Proj.		
		2018/19	Aug	Sep	2018/19		Aug	Sep	2018/19	Aug		Sep	MMT	Percent	MMT	Percent
World	36.50	36.51	34.91	34.73	2.05	1.97	2.02	2.00	74.92	71.94	70.48	69.54	-0.94	-1.33	-2.40	-3.33
United States	0.81	0.79	0.81	0.81	1.71	2.08	1.99	1.99	1.39	1.64	1.61	1.61	0.00	0.00	-0.04	-2.13
Total Foreign	35.69	35.72	34.10	33.92	2.06	1.97	2.02	2.00	73.53	70.29	68.87	67.93	-0.94	-1.36	-2.36	-3.36
European Union	6.80	7.03	5.65	5.58	3.26	2.85	3.19	3.14	22.18	20.03	18.00	17.50	-0.50	-2.78	-2.53	-12.64
Canada	9.27	9.12	8.40	8.40	2.30	2.23	2.39	2.39	21.33	20.34	20.10	20.10	0.00	0.00	-0.24	-1.19
China	6.65	6.47	6.60	6.60	2.00	1.99	1.98	1.98	13.27	12.85	13.10	13.10	0.00	0.00	0.25	1.95
South Asia																
India	6.70	7.20	7.30	7.30	1.06	1.11	1.05	1.05	7.10	8.00	7.70	7.70	0.00	0.00	-0.30	-3.75
Pakistan	0.24	0.23	0.24	0.24	0.96	0.98	0.98	0.98	0.23	0.23	0.24	0.24	0.00	0.00	0.01	4.44
Bangladesh	0.25	0.25	0.25	0.25	0.92	0.92	0.92	0.92	0.23	0.23	0.23	0.23	0.00	0.00	0.00	0.00
Former Soviet Union - 12																
Russia	0.95	1.50	1.50	1.50	1.58	1.33	1.40	1.40	1.50	1.99	2.10	2.10	0.00	0.00	0.11	5.58
Ukraine	0.79	1.00	1.28	1.28	2.80	2.85	2.50	2.42	2.22	2.85	3.20	3.10	-0.10	-3.13	0.25	8.77
Belarus	0.33	0.35	0.30	0.30	1.81	1.31	1.63	1.63	0.60	0.46	0.49	0.49	0.00	0.00	0.03	7.46
Kazakhstan	0.25	0.37	0.28	0.28	1.11	1.08	1.14	1.14	0.28	0.39	0.32	0.32	0.00	0.00	-0.07	-18.78
Australia	3.17	1.89	2.00	1.90	1.23	1.15	1.30	1.21	3.89	2.18	2.60	2.30	-0.30	-11.54	0.12	5.50
South America																
Chile	0.06	0.05	0.06	0.06	3.89	3.85	4.25	4.11	0.22	0.19	0.26	0.23	-0.03	-9.80	0.05	24.32
Paraguay	0.03	0.04	0.03	0.03	1.00	1.50	1.87	1.87	0.03	0.06	0.06	0.06	0.00	0.00	0.00	-6.67
Switzerland	0.02	0.02	0.02	0.02	3.14	3.14	3.14	3.14	0.07	0.07	0.07	0.07	0.00	0.00	0.00	0.00
Ethiopia	0.03	0.04	0.04	0.04	1.82	1.57	1.86	1.86	0.05	0.06	0.07	0.07	0.00	0.00	0.01	18.18
Others	0.15	0.17	0.16	0.15	2.17	2.14	2.22	2.23	0.33	0.37	0.35	0.33	-0.01	-4.02	-0.04	-10.46

World and Selected Countries and Regions

Table 16 Copra, Palm Kernel, and Palm Oil Production

Country / Region	Production (Million metric tons)				Change in Production			
	2017/18	Prel.	2019/20 Proj.		From last month		From last year	
		2018/19	Aug	Sep	MMT	Percent	MMT	Percent
Oilseed, Copra								
Philippines	2.60	2.63	2.50	2.50	0.00	0.00	-0.13	-4.94
Indonesia	1.65	1.64	1.60	1.60	0.00	0.00	-0.04	-2.44
India	0.75	0.75	0.75	0.75	0.00	0.00	0.00	0.00
Vietnam	0.28	0.29	0.29	0.29	0.00	0.00	0.00	0.00
Mexico	0.21	0.22	0.22	0.22	0.00	0.00	0.00	0.00
Papua New Guinea	0.10	0.10	0.10	0.10	0.00	0.00	0.00	0.00
Thailand	0.07	0.07	0.07	0.07	0.00	0.00	0.00	0.00
Sri Lanka	0.07	0.07	0.07	0.07	0.00	0.00	0.00	0.00
Solomon Islands	0.03	0.03	0.03	0.03	0.00	0.00	0.00	0.00
Cote d'Ivoire	0.03	0.03	0.03	0.03	0.00	0.00	0.00	0.00
World	5.94	5.98	5.81	5.81	0.00	0.00	-0.17	-2.84
Oilseed, Palm Kernel								
Indonesia	10.50	10.90	11.30	11.30	0.00	0.00	0.40	3.67
Malaysia	4.92	5.20	5.30	5.30	0.00	0.00	0.10	1.92
Thailand	0.82	0.87	0.89	0.89	0.00	0.00	0.02	2.30
Nigeria	0.73	0.73	0.73	0.73	0.00	0.00	0.00	0.00
Colombia	0.33	0.33	0.36	0.36	0.00	0.00	0.03	9.09
Guatemala	0.17	0.17	0.17	0.17	0.00	0.00	0.00	0.00
Papua New Guinea	0.17	0.17	0.17	0.17	0.00	0.00	0.00	0.00
Honduras	0.14	0.14	0.14	0.14	0.00	0.00	0.00	0.00
Brazil	0.13	0.14	0.14	0.14	0.00	0.00	0.00	0.00
Cote d'Ivoire	0.12	0.12	0.12	0.12	0.00	0.00	0.00	0.00
World	18.76	19.50	20.05	20.05	0.00	0.00	0.55	2.82
Oil, Palm								
Indonesia	39.50	41.50	43.00	43.00	0.00	0.00	1.50	3.61
Malaysia	19.68	21.00	21.20	21.20	0.00	0.00	0.20	0.95
Thailand	2.78	2.90	3.00	3.00	0.00	0.00	0.10	3.45
Colombia	1.63	1.63	1.68	1.68	0.00	0.00	0.06	3.70
Nigeria	1.03	1.02	1.02	1.02	0.00	0.00	0.00	0.00
Guatemala	0.85	0.85	0.85	0.85	0.00	0.00	0.00	0.00
Papua New Guinea	0.63	0.63	0.63	0.63	0.00	0.00	0.00	0.00
Ecuador	0.57	0.58	0.63	0.63	0.00	0.00	0.05	8.62
Honduras	0.58	0.58	0.58	0.58	0.00	0.00	0.00	0.00
Brazil	0.50	0.53	0.54	0.54	0.00	0.00	0.02	3.85
World	70.61	74.08	76.01	76.01	0.00	0.00	1.93	2.61

World and Selected Countries and Regions

Table 17 Cotton Area, Yield, and Production

Country / Region	Area (Million hectares)				Yield (Kilograms per hectare)				Production (Million 480 lb. bales)				Change in Production			
	2017/18	Prel.	2019/20 Proj.		2017/18	Prel.	2019/20 Proj.		2017/18	Prel.	2019/20 Proj.		From last month		From last year	
		2018/19	Aug	Sep		2018/19	Aug	Sep		2018/19	Aug	Sep	MBales	Percent	MBales	Percent
World	33.73	33.52	34.74	34.66	799	773	787	785	123.78	119.05	125.61	124.90	-0.71	-0.56	5.85	4.91
United States	4.49	4.13	5.11	5.06	1,014	968	959	940	20.92	18.37	22.52	21.86	-0.65	-2.90	3.50	19.03
Total Foreign	29.24	29.39	29.62	29.60	766	746	758	758	102.86	100.68	103.09	103.04	-0.06	-0.05	2.36	2.34
South Asia																
India	12.60	12.60	12.60	12.70	501	458	501	506	29.00	26.50	29.00	29.50	0.50	1.72	3.00	11.32
Pakistan	2.70	2.30	2.50	2.50	661	719	697	697	8.20	7.60	8.00	8.00	0.00	0.00	0.40	5.26
China	3.40	3.50	3.45	3.45	1,761	1,726	1,751	1,751	27.50	27.75	27.75	27.75	0.00	0.00	0.00	0.00
South America																
Brazil	1.18	1.61	1.55	1.55	1,708	1,731	1,686	1,686	9.22	12.80	12.00	12.00	0.00	0.00	-0.80	-6.25
Argentina	0.32	0.38	0.36	0.36	558	642	605	605	0.82	1.12	1.00	1.00	0.00	0.00	-0.12	-10.71
Paraguay	0.01	0.01	0.01	0.01	416	416	416	416	0.02	0.02	0.02	0.02	0.00	0.00	0.00	0.00
Africa																
Burkina	0.85	0.63	0.70	0.60	307	294	342	345	1.20	0.85	1.10	0.95	-0.15	-13.64	0.10	11.76
Mali	0.71	0.73	0.74	0.78	432	381	419	419	1.40	1.27	1.43	1.49	0.07	4.56	0.22	17.32
Cote d'Ivoire	0.33	0.39	0.43	0.43	536	486	461	461	0.81	0.88	0.90	0.90	0.00	0.00	0.03	2.86
Benin	0.53	0.65	0.68	0.68	468	469	468	468	1.14	1.40	1.45	1.45	0.00	0.00	0.05	3.57
Egypt	0.09	0.14	0.10	0.10	718	772	762	762	0.30	0.50	0.35	0.35	0.00	0.00	-0.15	-30.00
Cameroon	0.23	0.25	0.25	0.25	484	523	492	492	0.50	0.60	0.57	0.57	0.00	0.00	-0.04	-5.83
Tanzania	0.35	0.50	0.50	0.50	143	185	174	174	0.23	0.43	0.40	0.40	0.00	0.00	-0.03	-5.88
Nigeria	0.27	0.27	0.27	0.27	190	190	190	190	0.24	0.24	0.24	0.24	0.00	0.00	0.00	0.00
Zimbabwe	0.20	0.20	0.20	0.20	294	218	207	207	0.27	0.20	0.19	0.19	0.00	0.00	-0.01	-5.00
Ethiopia	0.06	0.08	0.08	0.08	639	687	680	680	0.18	0.24	0.25	0.25	0.00	0.00	0.01	2.88
Former Soviet Union - 12																
Uzbekistan	1.25	1.10	1.05	1.05	672	648	622	622	3.86	3.28	3.00	3.00	0.00	0.00	-0.28	-8.40
Turkmenistan	0.55	0.55	0.55	0.55	535	364	419	459	1.34	0.91	1.05	1.15	0.10	9.52	0.24	26.37
Tajikistan	0.19	0.18	0.18	0.18	671	502	484	532	0.57	0.42	0.40	0.44	0.04	10.00	0.03	6.02
Kazakhstan	0.13	0.13	0.12	0.12	523	587	558	558	0.30	0.35	0.30	0.30	0.00	0.00	-0.05	-13.04
Middle East																
Turkey	0.47	0.52	0.54	0.56	1,853	1,549	1,653	1,594	4.00	3.70	4.10	4.10	0.00	0.00	0.40	10.81
Syria	0.03	0.03	0.03	0.03	1,161	1,219	1,219	1,219	0.16	0.14	0.14	0.14	0.00	0.00	0.00	0.00
Iran	0.09	0.08	0.08	0.08	640	748	748	748	0.25	0.28	0.28	0.28	0.00	0.00	0.00	0.00
Australia	0.53	0.38	0.26	0.20	1,972	1,261	1,591	1,524	4.80	2.20	1.90	1.40	-0.50	-26.32	-0.80	-36.36
Mexico	0.21	0.24	0.24	0.23	1,617	1,560	1,575	1,548	1.56	1.72	1.70	1.60	-0.10	-5.88	-0.12	-6.98
Burma	0.25	0.24	0.24	0.24	634	635	635	635	0.73	0.70	0.70	0.70	0.00	0.00	0.00	0.00
Others	1.74	1.72	1.94	1.93	535	584	549	550	4.28	4.61	4.89	4.88	-0.01	-0.20	0.27	5.83

World and Selected Countries and Regions

TABLE 18

The table below presents a record of the September projection and the final Estimate. Using world wheat production as an example, the "root mean square error" means that chances are 2 out of 3 that the current forecast will not be above or below the final estimate by more than 2 percent. Chances are 9 out of 10 (90% confidence level) that the difference will not exceed 3.3 percent. The average difference between the September projection and the final estimate is 8.9 million tons, ranging from 0.9 million to 30.7 million tons. The September projection has been below the estimate 25 times and above 13 times.

RELIABILITY OF PRODUCTION PROJECTIONS 1/

COMMODITY AND REGION	Root mean square error	90 percent confidence interval	Difference between forecast and final estimate				
			Average	Smallest	Largest	Years	
						Below final	Above final
	Percent		---Million metric tons---				
WHEAT							
World	2.0	3.3	8.9	0.9	30.7	25	13
U.S.	1.9	3.1	0.8	0.0	2.5	16	22
Foreign	2.2	3.8	9.0	1.0	30.9	26	12
COARSE GRAINS 2/							
World	2.2	3.7	17.6	0.2	50.6	29	9
U.S.	4.2	7.1	7.8	0.2	26.0	25	13
Foreign	2.6	4.4	15.9	1.0	59.9	28	10
RICE (Milled)							
World	2.3	3.9	6.4	0.4	24.1	29	9
U.S.	4.4	7.5	0.2	0.0	0.5	21	16
Foreign	2.4	4.0	6.4	0.3	24.4	29	9
SOYBEANS							
World	4.6	7.8	7.2	0.4	27.4	23	15
U.S.	5.1	8.6	3.0	0.2	10.4	21	17
Foreign	7.5	12.8	6.7	0.9	29.1	18	20
COTTON			---Million 480-lb. bales---				
World	4.7	8.0	3.2	0.1	12.6	23	15
U.S.	6.1	10.4	0.8	0.0	2.4	19	18
Foreign	5.3	9.1	2.9	0.0	11.3	24	14
UNITED STATES			-----Million bushels-----				
CORN	4.4	7.5	292	15	885	25	13
SORGHUM	6.1	10.4	24	0	81	16	21
BARLEY	4.9	8.2	11	1	36	15	23
OATS	9.6	16.3	11	0	44	6	31

1/ Marketing years 1981/82 through 2018/19. Final for grains, soybeans and cotton is defined as the first *November* estimates following the marketing year for 1981/82 through 2017/18, and for 2018/19 last month's estimate.

2/ Includes corn, sorghum, barley, oats, rye, millet, and mixed grain

September 2019

Office of Global Analysis, FAS, USDA