



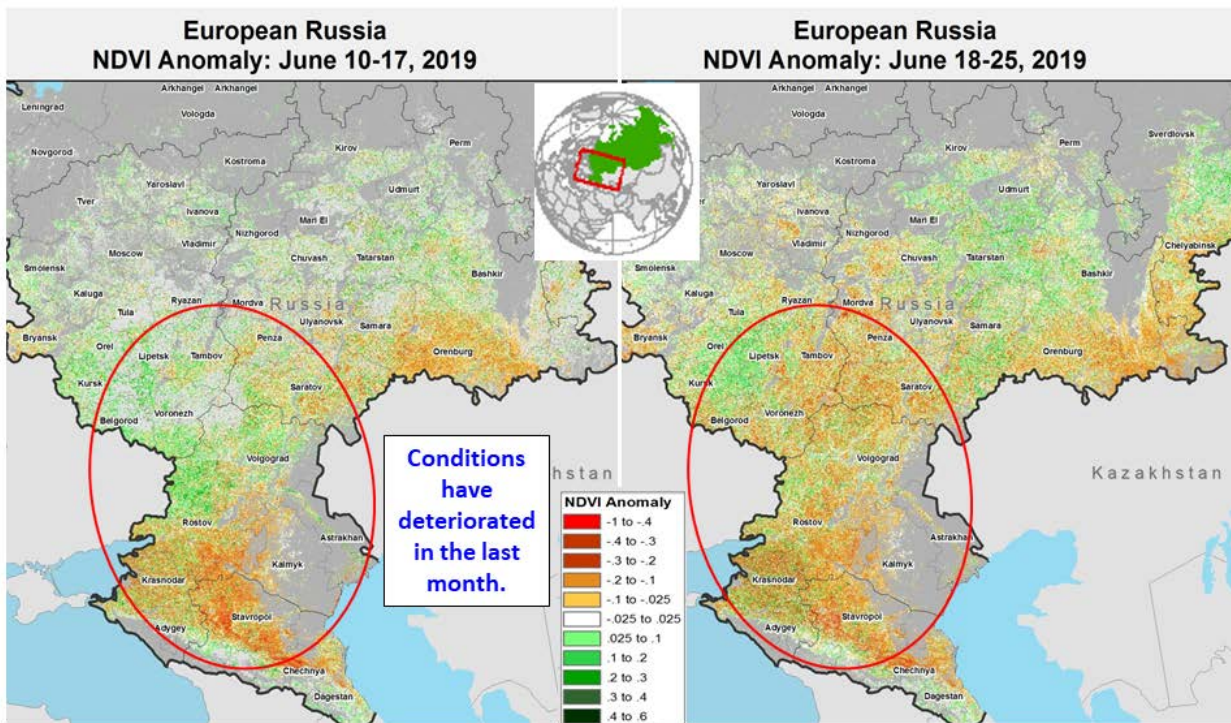
United States
Department of
Agriculture

Foreign
Agricultural
Service

Circular Series
WAP 7-19
July 2019

World Agricultural Production

Russia Wheat: Drought in the Main Winter Wheat Growing Region Reduces Production



Source: USDA/ NASA, IIASA Hybrid 2015 Crop Cover
Global Agriculture Monitoring Project (GLAM)

Russia wheat production for 2019/20 is estimated at 74.2 million metric tons (mmt), down 5 percent from last month but up 4 percent from last year. The estimate includes 55.0 mmt of winter wheat and 19.2 mmt of spring wheat. USDA crop production estimates for Russia exclude estimated output from Crimea. Total wheat yield is estimated at 2.82 tons per hectare, down 4 percent from last month but up 4 percent from last year. Total area is estimated at 26.3 million hectares, down 1 percent from last month.

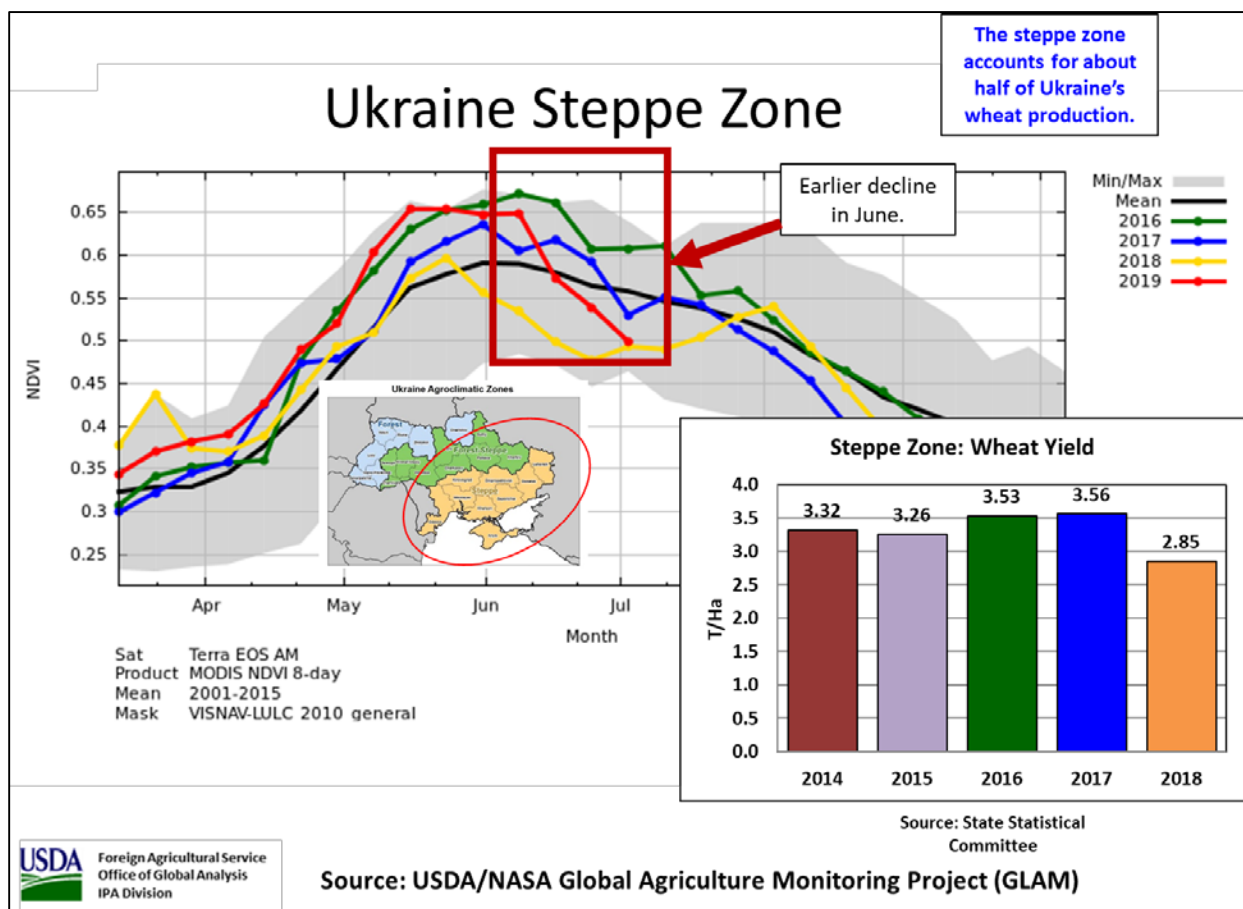
Winter wheat is grown in European Russia (including the Southern, Central, Volga, and North Caucasus Districts) and typically accounts for about half of total wheat area and 70 percent of production. The month-to-month decrease for winter wheat yield is based on deteriorating crop conditions in the Southern, North Caucasus and Volga Districts. Additionally, harvested area was

Approved by the World Agricultural Outlook Board

revised down due to reports of increased winterkill from Rosstat, Russia’s statistical agency. Harvest began in early July, in the southern production regions. Spring wheat planting in the major production zones (the Siberian, Ural, and Volga Districts) is complete and harvest will begin in late August.

Area, yield, and production estimates for Russia winter wheat and spring wheat are available on PSD Online. Select “Downloadable Data Sets” and open the zipped file for “Russia Wheat; Winter/Spring Area & Prod.” (For more information, please contact Katie.McGaughey@fas.usda.gov.)

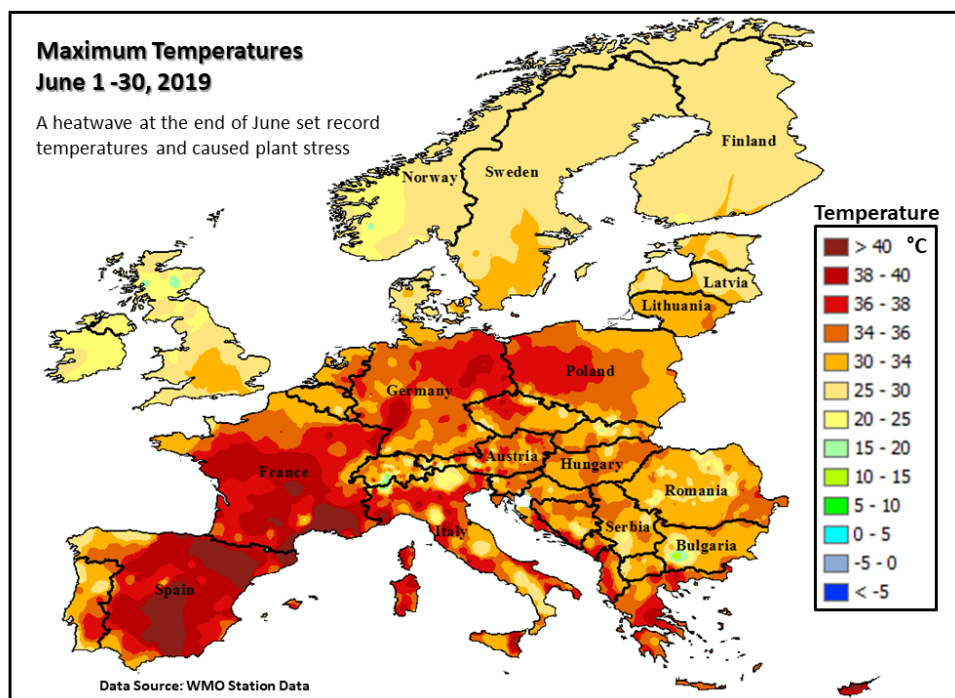
Ukraine Wheat: Drought in the Steppe Zone Reduces Yield



Ukraine wheat production for 2019/20 is forecast at 29.0 million metric tons, down 3 percent from last month and up 16 percent from last year. Harvested area is forecast at 7.0 million hectares, unchanged from last month and up 4 percent from last year. Yield is forecast at 4.14 tons per hectare, down 3 percent from last month but up 11 percent from last year. The month-to-month decrease in yield is attributed to hot and dry weather in the Steppe Zone, which accounts for about half of Ukraine’s production. MODIS Normalized Difference Vegetation Index (NDVI) in the Steppe Zone shows a below-average crop starting in mid-June. All USDA crop production estimates for Ukraine include estimated output from Crimea. (For more information, please contact Katie.McGaughey@fas.usda.gov.)

European Union Wheat: Down 2.5 million tons Due to Hot, Dry Weather

European Union (EU) wheat production is estimated at 151.3 million metric tons (mmt), down 2.5 mmt (2 percent) from last month, but up 14.1 mmt (10 percent) from last year's poor harvest. Production is estimated to be nearly unchanged from the 5-year average of 151.0 mmt. Area is estimated at 26.5 million hectares (mha), unchanged from last month, but 0.7 mha (3 percent) above last year, and down less than 1 percent from the 5-year average. Yield is estimated at 5.72 metric tons per hectare (mt/ha), down 2 percent from last month, but up 7 percent from last year, and up 1 percent from the 5-year average of 5.66 mt/ha.

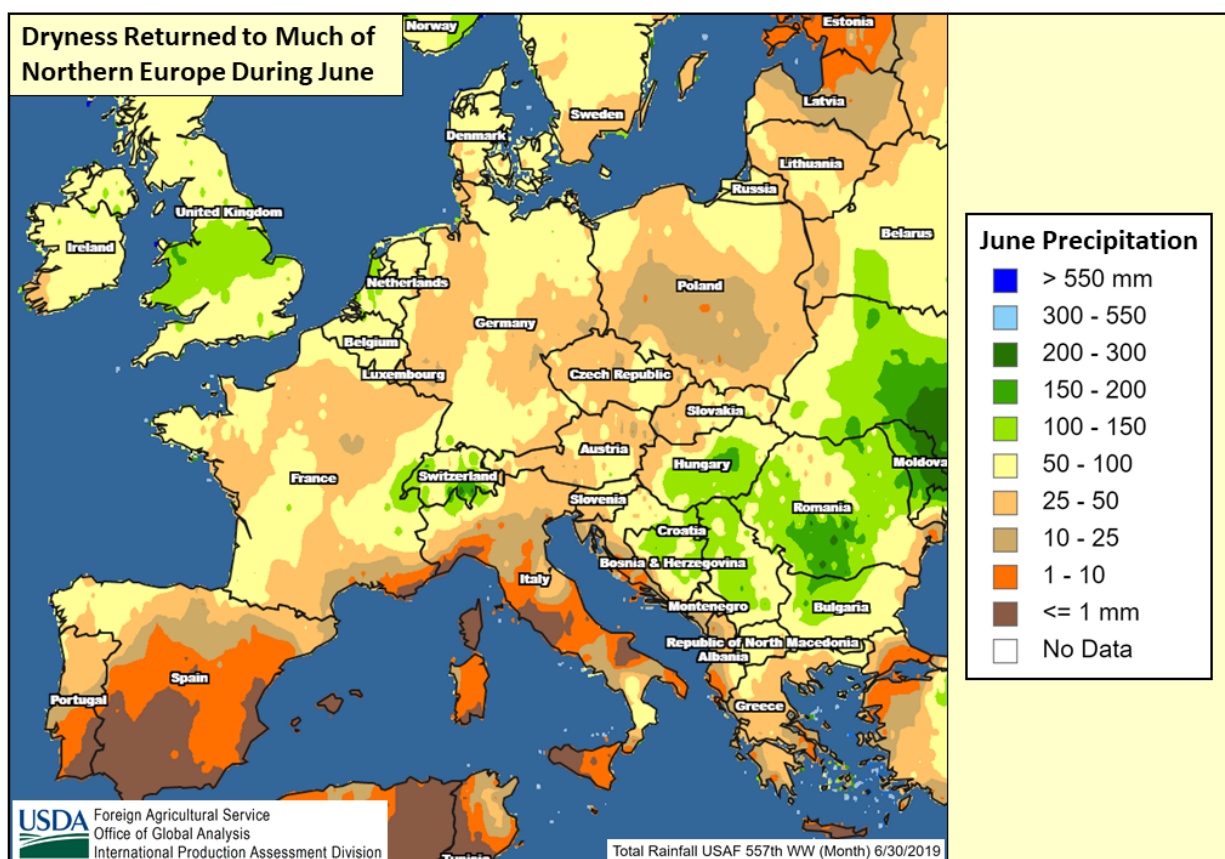


Extremely high temperatures in June, combined with a lack of rain in areas of central and northern Europe have been unfavorable for wheat development in the late grain-fill stage. During June record high temperatures were set in many large producing countries, including France, Germany, Poland, and the Czech Republic. While periods of rain during spring and early summer have assisted crop development, particularly in the UK and northwestern France, overall June weather in northern Europe was unfavorably dry. Specifically, subsurface moisture was insufficient all season due to the extended precipitation deficit. The extreme heat in June increased moisture loss and enhanced plant stress. Reports of fewer tillers, smaller heads, and fewer kernels have been prominent this season. Large yield reductions were made this month to France, Germany, and Lithuania. Reductions would have been even greater had the heat arrived a few weeks sooner when wheat was in the early grain-fill stage. The wheat harvest began in late June and lasts through July. (For more information, please contact Bryan.Purcell@fas.usda.gov.)

For country-specific area, yield, and production estimates within the European Union (EU), please go to PSD Online at <https://apps.fas.usda.gov/PSDOnline/app/index.html#/app/home>, and select “Downloadable Data Sets.” Select the zipped file for “EU Countries Area & Production.”

European Union Rapeseed: Down 1.0 million tons Due to Hot, Dry Conditions

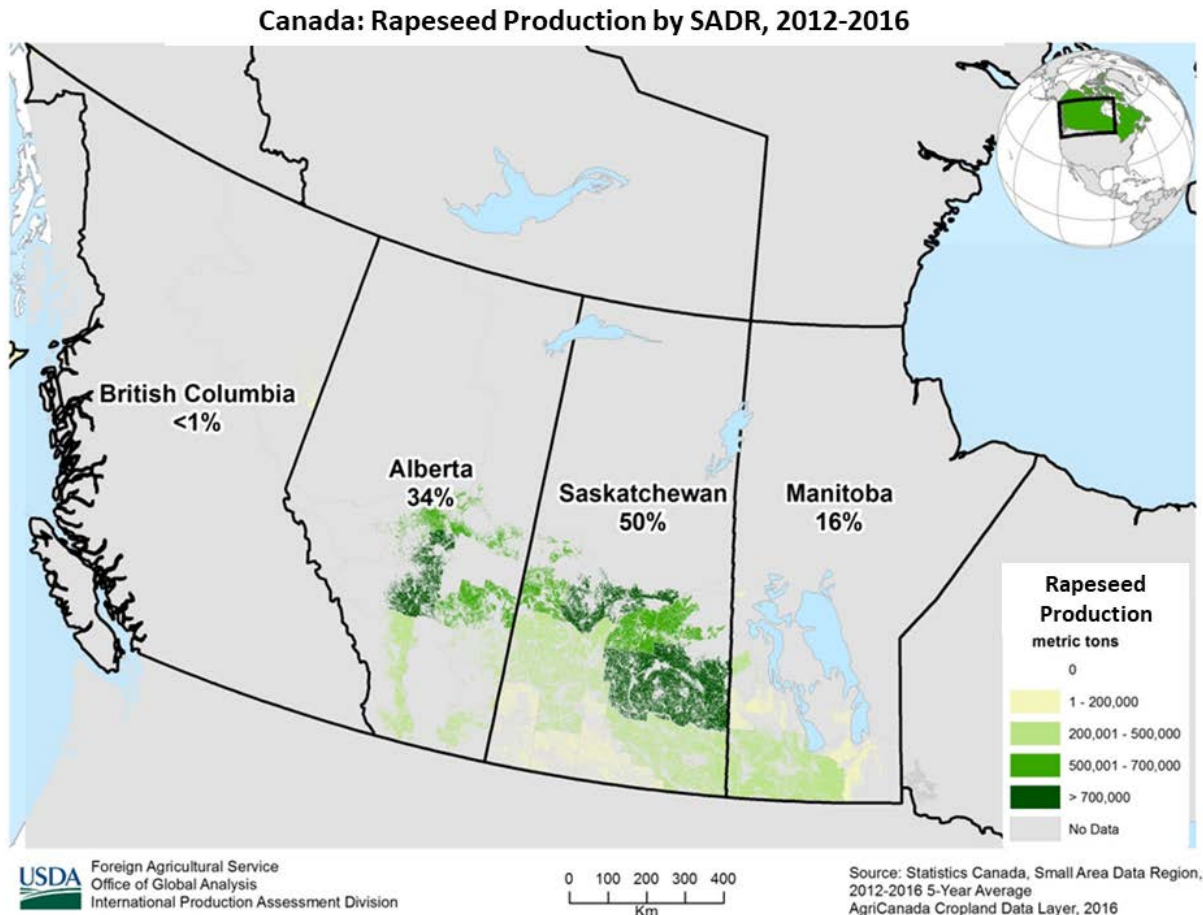
European Union (EU) rapeseed production is estimated at 18.7 million metric tons (mmt), down 1.0 mmt (5 percent) from last month, down 1.4 mmt (7 percent) from last year, and 15 percent below the 5-year average. Area is estimated at 5.75 million hectares (mha), down 0.05 mha (1 percent) from last month, and down 1.3 mha (19 percent) from last year and 14 percent below the 5-year average. Yield is estimated at 3.25 metric tons per hectare (mt/ha), down 4 percent from last month, but up 15 percent from last year, and equivalent to the 5-year average.



Extremely high temperatures in June, combined with a lack of rain in areas of central and northern Europe have been unfavorable for rapeseed development in the podfill stage. During June, record high temperatures were set in many large producing countries, including France, Germany, Poland, and the Czech Republic. Dryness last summer and into fall greatly reduced plantings to a level not seen in over 10 years. Pest issues, particularly with the cabbage stem flea beetle, have also been reported. While periods of rain during spring and early summer have assisted crop development, particularly in the UK and northwestern France, overall June weather was unfavorably dry. The subsurface moisture remained insufficient from long-term drought. Reports of fewer tillers, smaller seeds and fewer pods are common. Rapeseed harvest began in late June and lasts through July. Area is especially low this year because of dryness at planting in August and September 2018 and into emergence. Significant area was re-planted in spring 2019 to other crops such as barley and corn. *(For more information, please contact Bryan.Purcell@fas.usda.gov.)*

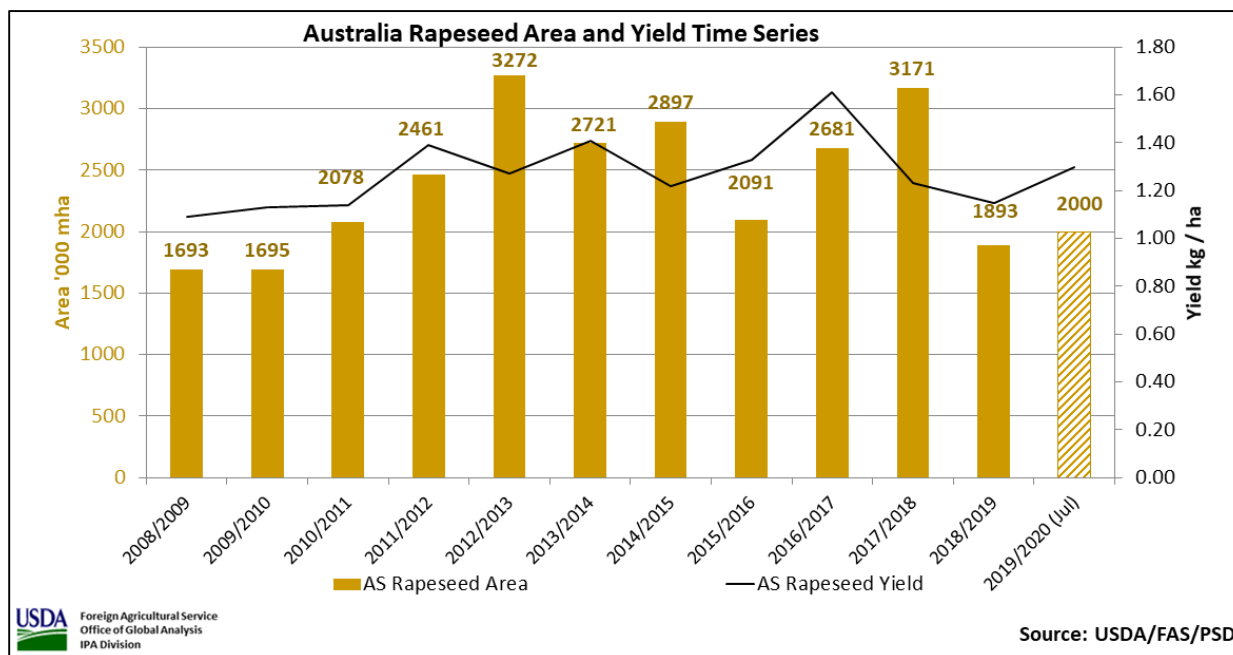
For country-specific area, yield, and production estimates within the European Union (EU), please go to PSD Online at <https://apps.fas.usda.gov/PSDOnline/app/index.html#/app/home>, and select “Downloadable Data Sets.” Select the zipped file for “EU Countries Area & Production.”

Canada Rapeseed: Decreased Harvested Area

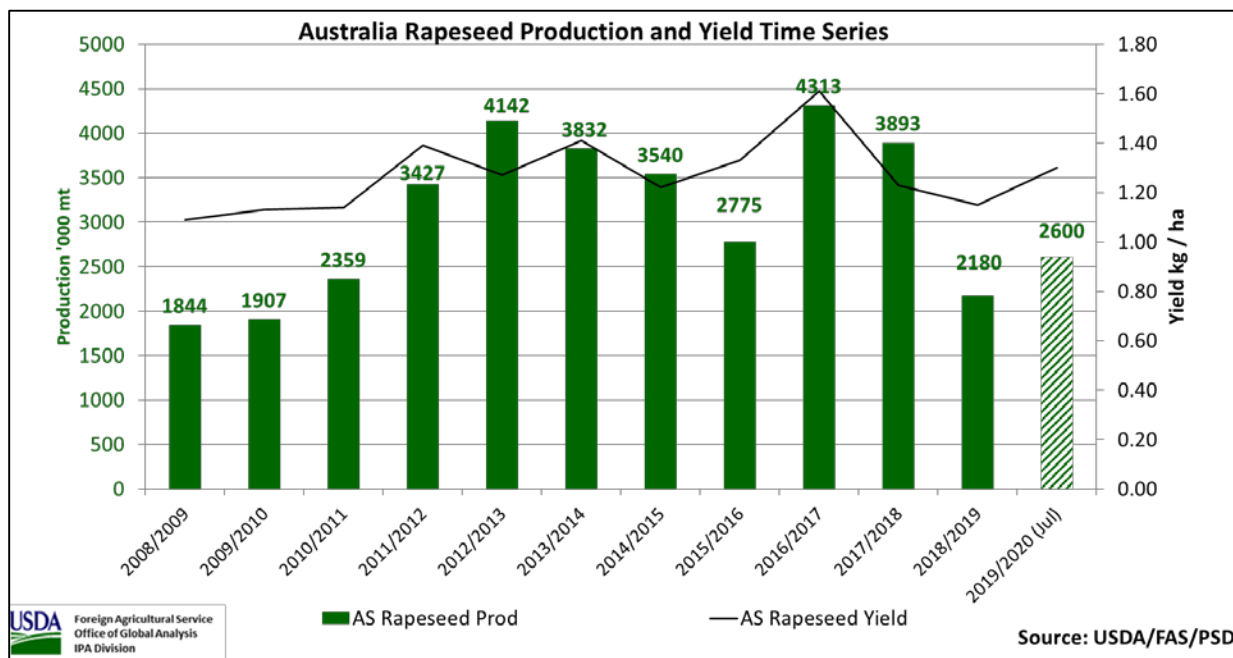


Canada rapeseed production for 2019/20 is forecast at 20.1 million metric tons (mmt), down 1.0 mmt from last month and down 1.0 mmt from last year. Harvested area is forecast at 8.4 million hectares (mha), down 0.4 mha from last month and down 0.7 mha from last year. Yield is forecast at 2.39 tons per hectare, down slightly from last month, but up 3 percent from last year. Statistics Canada’s June Field Crop Survey indicated lower planted area of rapeseed in favor of other crops such as corn and barley. In the top three rapeseed producing provinces, reported area was down 7 percent in Saskatchewan, 13 percent in Alberta and 3 percent in Manitoba. (For more information, please contact Katie.McGaughey@fas.usda.gov.)

Australia Rapeseed: Dry Conditions Persist in Major Growing Regions

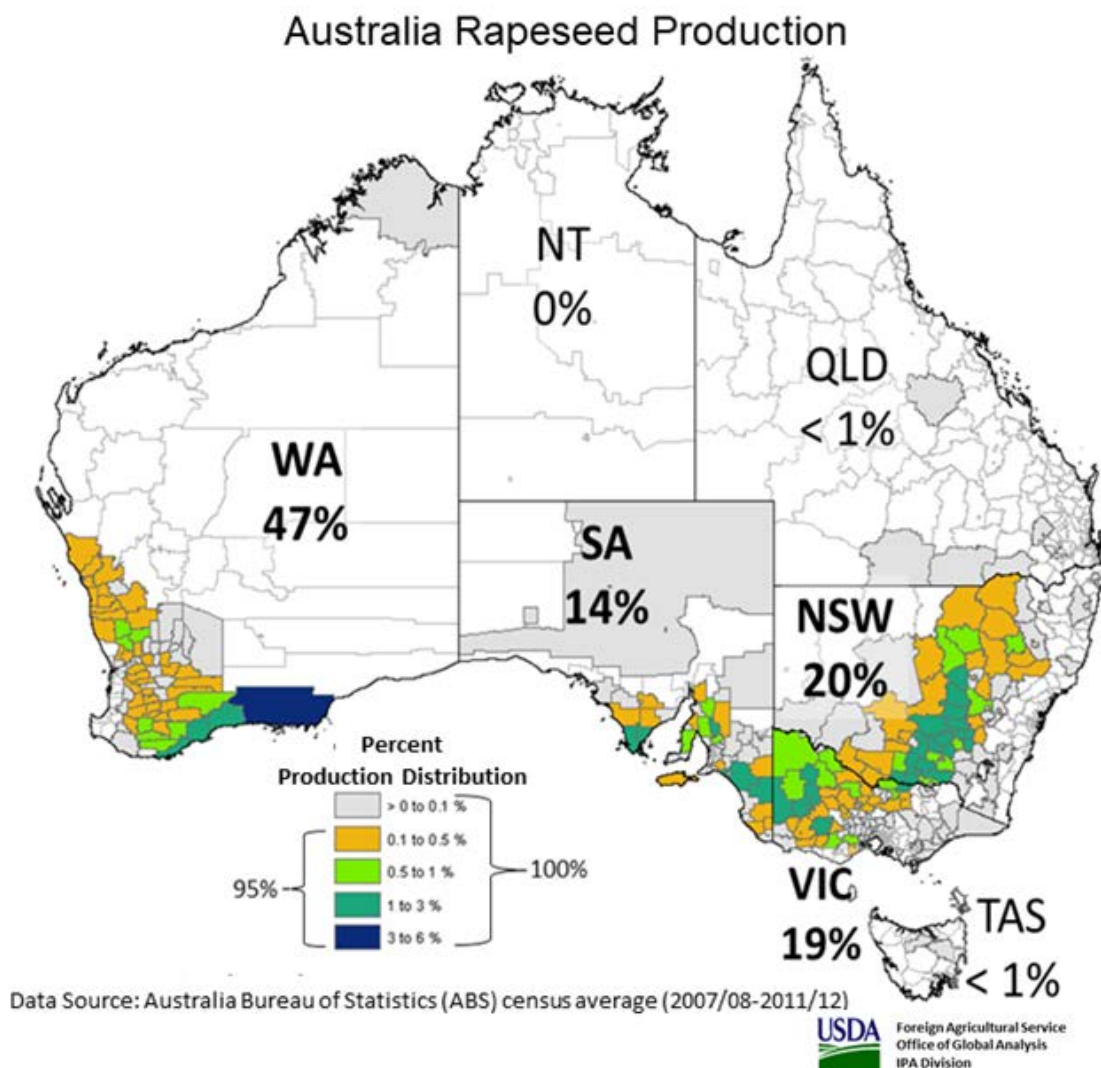


Australia rapeseed production for 2019/20 is forecast at 2.6 million metric tons (mmt), down 1.1 mmt (30 percent) from last month, but up 19 percent from last year. Area is estimated at 2.0 million hectares (mha), down 26 percent from last month, but up 6 percent from last year. Yield is forecast at 1.30 tons per hectare, down 5 percent from last month and 1 percent below the five-year average.



The year-to-year increase reflects recovery from the 2018/19 crop which suffered from frosts and extremely dry conditions in southeastern Australia. This year, area planted to rapeseed is forecast to increase by 6 percent; last year, significant area was taken out of production and cut for hay in 2018/19. The month-to-month decrease is due to an unusually dry April 2019 and May rainfall

was below average in growing regions of Western Australia, and central and northern New South Wales. Dryness persisted through June across most of New South Wales, the second largest producing state. Rapeseed was sown from April to June. *(For more information, please contact James.Crutchfield@fas.usda.gov.)*

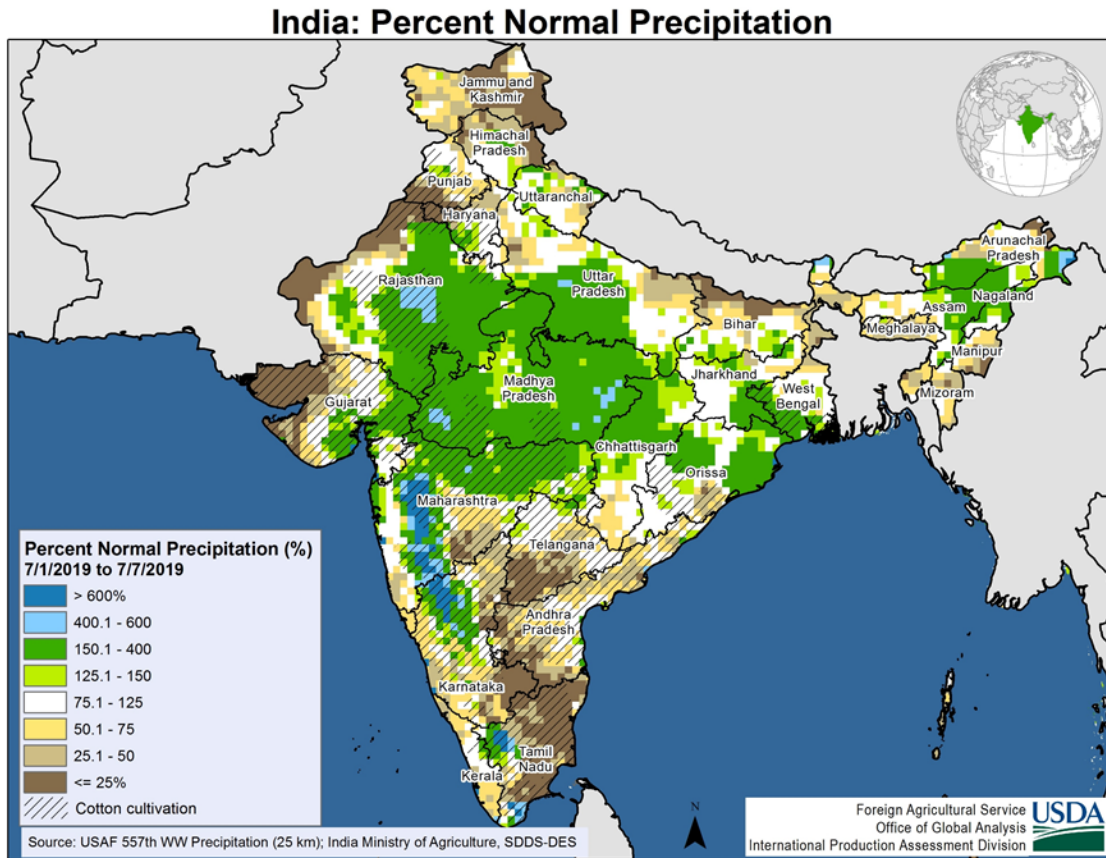


India Cotton: Yield Up 9 Percent from Last Year

USDA forecasts India cotton production for 2019/20 at 29.0 million 480-pound bales, up 2 percent from last month and 9 percent from the previous year. Harvested area is forecast at 12.6 million hectares, up 2 percent from last month and unchanged from last year. The increase is based upon an assumption of a normal southwest monsoon and increased area in the northern states. Yield is forecast at 501 kilograms per hectare, up 9 percent from last year.

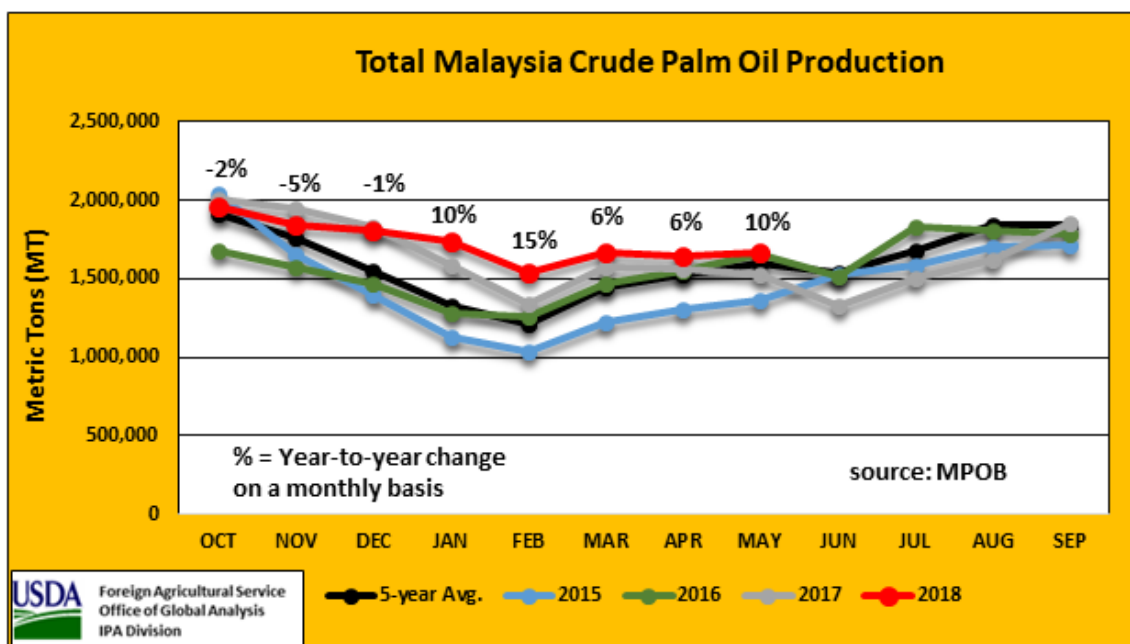
Yield is expected to bounce back from last year's drought on the assumption of a normal monsoon. However, the southwest monsoon was delayed about two weeks. As of the first week in July the monsoon had progressed to the major cotton areas in central India: Gujarat,

Maharashtra, and Madhya Pradesh. Planting progress was down 16 percent from last year but on par with the 5-year average according to the *All India Crop Situation* report from July 5. The 16 percent decrease is due to the delayed monsoon.



Cotton planting was completed in the northern Indian states of Punjab, Haryana, and Rajasthan in late May. The northern states planting was up 17 percent from the same period last year because of higher domestic prices. Planting has begun in the major cotton areas of central India. Planting in Gujarat was well ahead of the same period last year because of a tropical cyclone in mid-June which provided sufficient soil moisture, however, planting in Maharashtra has only begun. Cotton planting usually peaks around mid-July. Cotton is grown only in the *kharif* season from May to October, however, harvest can continue into February. (For more information, please contact Arnella.Trent@fas.usda.gov.)

Malaysia Palm Oil: Estimated Production Increases for 2018/19



USDA estimates Malaysia 2018/19 production at 21.0 million metric tons, up 2 percent from last month, up 7 percent from last year and up 8 percent from the 5-year average. The month-to-month production increase corresponds to favorable weather in the main palm oil producing regions leading to above-average monthly crude palm oil production accumulations, according to the Malaysian Palm Oil Board monthly production statistics. Since January 2019, monthly production, as compared to last year, has been higher than expected as seen in the chart above. Palm oil is harvested every 10 days and requires between 150 to 200 millimeters of rainfall each month to yield normally. Harvested area is estimated at 5.3 million hectares, unchanged from last month but up 2 percent from last year and up 6 percent from the 5-year average. Yield is estimated at 3.96 metric tons per hectare up 2 percent from last month, 5 percent from last year, and 1 percent from the 5-year average. (For more information please contact Justin.Jenkins@fas.usda.gov.)



**World Agricultural Production
U.S. Department of Agriculture**

Foreign Agricultural Service / Office of Global Analysis
International Production Assessment Division (IPAD)
Ag Box 1051, Room 4630, South Building
Washington, DC 20250-1051

<https://ipad.fas.usda.gov/>

Telephone: (202) 720-1662 Fax: (202) 720-1158

This report uses information from the Foreign Agricultural Service’s (FAS) global network of agricultural attachés and counselors, official statistics of foreign governments and other foreign source materials, and the analysis of economic data and satellite imagery. Estimates of foreign area, yield, and production are from the International Production Assessment Division, FAS, and are reviewed by USDA’s Inter-Agency Commodity Estimates Committee. Estimates of U.S. area, yield, and production are from USDA’s National Agricultural Statistics Service. Numbers within the report may not add to totals because of rounding. This report reflects official USDA estimates released in the World Agricultural Supply and Demand Estimates (WASDE-584), July 11, 2019.

Printed copies are available from the National Technical Information Service. Download an order form at http://www.ntis.gov/products/specialty/usda/fas_a-g.asp, or call NTIS at 1-800-363-2068.

The FAS International Production Assessment Division prepared this report. The next issue of World Agricultural Production will be released after 12:00 p.m. Eastern Time, August 12, 2019.

Conversion Table

Metric tons to bushels

Wheat, soybeans	=	MT * 36.7437
Corn, sorghum, rye	=	MT * 39.36825
Barley	=	MT * 45.929625
Oats	=	MT * 68.894438

Metric tons to 480-lb bales

Cotton	=	MT * 4.592917
--------	---	---------------

Metric tons to hundredweight

Rice	=	MT * 22.04622
------	---	---------------

Area & weight

1 hectare	=	2.471044 acres
1 kilogram	=	2.204622 pounds



For further information, contact:
U.S. Department of Agriculture
Foreign Agricultural Service
Office of Global Analysis
 International Production Assessment Division
 Ag Box 1051, Room 4630, South Building
 Washington, DC 20250-1051

Telephone: (202) 720-1662

Fax: (202) 720-1158

GENERAL INFORMATION

Director	Ronald Frantz	202-720-4056	ronald.frantz@fas.usda.gov
Deputy Director	Robert Tetrault	202-720-1071	robert.tetrault@fas.usda.gov
Administrative Assistant	Vacant		
USDA Remote Sensing Advisor	Glenn Bethel	202-720-1280	glenn.bethel@fas.usda.gov
Sr. Analyst/Technical Lead	Curt Reynolds, Ph.D.	202-690-0134	curt.reynolds@fas.usda.gov
Sr. Analyst/ Satellite Imagery	Dath Mita, Ph.D.	202-720-7339	dath.mita@fas.usda.gov
Archives Manager/Technical Lead			
Sr. Analyst/ Global Special	Jim Crutchfield	202-690-0135	james.crutchfield@fas.usda.gov
Projects Manager/Technical Lead			
Sr. Analyst/Technical Lead	Vacant		
GIS Mapping/Imagery Specialist	Lisa Colson	202-720-6652	lisa.colson@fas.usda.gov
WAP Coordinator	Ifeoma Collins	202-720-0240	ifeoma.collins@usda.gov

COUNTRY- AND REGION-SPECIFIC INFORMATION

South America, Argentina, Venezuela, and Colombia	Denise McWilliams, Ph.D.	202-720-0107	denise.mcwilliams@fas.usda.gov
Western and Central Europe, and North Africa	Bryan Purcell	202-690-0138	bryan.purcell@fas.usda.gov
Russia, Ukraine, Kazakhstan	Katie McGaughey	202-720-9210	katie.mcgaughey@fas.usda.gov
South Asia, Sri Lanka	Arnella Trent	202-720-0881	arnella.trent@fas.usda.gov
Bangladesh, India, and Nepal			
East Asia, China, and Japan	Dath Mita, Ph.D.	202-720-7339	dath.mita@fas.usda.gov
Sub-Saharan Africa,	Curt Reynolds, Ph.D.	202-690-0134	curt.reynolds@fas.usda.gov
Nigeria and South Africa			
S.E. Asia, Indonesia, Thailand, Malaysia, Cambodia and Vietnam	Justin Jenkins	202-720-0419	justin.jenkins@fas.usda.gov
Central America, Mexico, and Western United States	Ifeoma Collins	202-720-0240	ifeoma.collins@usda.gov
Australia, New Zealand, Pakistan	Jim Crutchfield	202-690-0135	james.crutchfield@fas.usda.gov
Papua New Guinea and South Pacific Islands			
Middle East, Central Asia, Afghanistan	Bill Baker, Ph.D.	202-260-8109	william.baker@fas.usda.gov
Iraq, Iran, and Syria			
Canada, Caribbean,	Vacant		
Eastern United States			
Brazil	Maria Anulacion	202-720-6878	maria.anulacion@fas.usda.gov



The Foreign Agricultural Service (FAS) updates its production, supply and distribution (PSD) database for cotton, oilseeds, and grains at 12:00 p.m. on the day the *World Agricultural Supply and Demand Estimates* (WASDE) report is released. This circular is released by 12:15 p.m.

FAS Reports and Databases:

Current *World Market and Trade and World Agricultural Production* Reports (Please see Data Publications):

<https://apps.fas.usda.gov/psdonline/app/index.html#/app/home>

Archives *World Market and Trade and World Agricultural Production* Reports:

https://usda.library.cornell.edu/catalog?utf8=%E2%9C%93&search_field=all_fields&q=world+agricultural+production

Production, Supply and Distribution Database (PSD Online):

<http://apps.fas.usda.gov/psdonline/psdHome.aspx>

EU Countries Area and Production (Please see Downloadable Data Sets):

<https://apps.fas.usda.gov/psdonline/app/index.html#/app/home>

Russia Wheat, Winter/Spring Area and Production (Please see Downloadable Data Sets):

<https://apps.fas.usda.gov/psdonline/app/index.html#/app/home>

Global Agricultural Trade System (U.S. Exports and Imports):

<http://apps.fas.usda.gov/gats/default.aspx>

Export Sales Report:

<http://apps.fas.usda.gov/esrquery/>

Global Agricultural Information Network (Agricultural Attaché Reports):

<http://gain.fas.usda.gov/Pages/Default.aspx>

Other USDA Reports:

World Agricultural Supply and Demand Estimates (WASDE):

<http://www.usda.gov/oce/commodity/wasde/>

Economic Research Service:

<http://www.ers.usda.gov/topics/crops>

National Agricultural Statistics Service:

<http://www.nass.usda.gov/Publications/>

Table 01 World Crop Production Summary

Million Metric Tons

Commodity	World	Total Foreign	North America			Former Soviet		European	Asia (WAP)					South America		Selected Other			All Others	
			United States	Canada	Mexico	Russia	Ukraine		China	India	Indonesia	Pakistan	Thailand	Argentina	Brazil	Australia	South Africa	Turkey		
			-	-	-	-	-		-	-	-	-	-	-	-	-	-	-		-
---Million metric tons---																				
Wheat																				
2017/18	761.9	714.5	47.4	30.0	3.5	85.2	27.0	nr	134.3	98.5	0.0	26.6	0.0	18.5	4.3	20.9	1.5	21.0	243.2	
2018/19 prel.	730.9	679.6	51.3	31.8	3.0	71.7	25.1	nr	131.4	99.9	0.0	25.1	0.0	19.5	5.4	17.3	1.9	19.0	228.6	
2019/20 proj.																				
Jun	780.8	729.0	51.8	34.5	3.2	78.0	30.0	nr	132.0	101.2	0.0	25.6	0.0	20.0	5.3	22.5	1.9	21.0	253.8	
Jul	771.5	719.2	52.3	33.3	3.2	74.2	29.0	nr	132.0	101.2	0.0	25.6	0.0	20.0	5.3	21.0	1.9	21.0	251.5	
Coarse Grains																				
2017/18	1,360.1	975.7	384.4	26.2	33.2	41.7	34.1	nr	266.8	46.9	11.9	6.2	5.1	39.3	85.1	12.2	13.6	12.3	341.1	
2018/19 prel.	1,395.8	1,015.9	379.9	26.2	32.5	35.0	44.5	nr	265.4	43.4	12.6	6.6	5.4	58.6	104.3	10.9	12.1	13.7	344.7	
2019/20 proj.																				
Jun	1,389.5	1,029.5	359.9	28.4	33.1	38.9	43.1	nr	262.5	46.7	13.3	6.6	5.5	57.3	104.5	12.7	14.6	14.6	348.0	
Jul	1,395.5	1,030.4	365.1	29.2	33.1	38.8	43.6	nr	262.5	46.4	13.3	6.6	5.5	57.3	104.5	12.7	14.6	14.6	347.9	
Rice, Milled																				
2017/18	494.9	489.2	5.7	0.0	0.2	0.6	0.0	nr	148.9	112.8	37.0	7.5	20.6	0.9	8.2	0.5	0.0	0.5	151.6	
2018/19 prel.	498.7	491.5	7.1	0.0	0.2	0.7	0.0	nr	148.5	115.6	37.1	7.4	20.6	0.8	7.3	0.0	0.0	0.6	152.7	
2019/20 proj.																				
Jun	497.6	491.3	6.3	0.0	0.2	0.7	0.0	nr	146.0	115.0	37.4	7.5	20.9	0.8	7.3	0.1	0.0	0.6	154.8	
Jul	497.8	491.2	6.6	0.0	0.2	0.7	0.0	nr	146.0	115.0	37.4	7.5	20.9	0.8	7.2	0.1	0.0	0.6	154.8	
Total Grains																				
2017/18	2,616.8	2,179.4	437.4	56.2	36.9	127.5	61.1	nr	550.0	258.2	48.9	40.3	25.6	58.7	97.5	33.6	15.1	33.8	735.9	
2018/19 prel.	2,625.4	2,187.1	438.3	58.0	35.7	107.4	69.6	nr	545.3	258.9	49.7	39.1	25.9	78.9	117.0	28.3	14.0	33.3	726.0	
2019/20 proj.																				
Jun	2,667.9	2,249.9	418.0	62.9	36.5	117.6	73.1	nr	540.5	262.9	50.7	39.7	26.4	78.0	117.1	35.3	16.5	36.2	756.7	
Jul	2,664.8	2,240.7	424.0	62.5	36.5	113.7	72.6	nr	540.5	262.6	50.7	39.7	26.4	78.0	117.0	33.8	16.5	36.2	754.2	
Oilseeds																				
2017/18	580.7	449.2	131.5	29.1	1.3	15.5	19.8	nr	59.5	35.4	13.8	4.0	1.0	42.5	125.8	5.4	2.6	3.2	90.5	
2018/19 prel.	602.4	468.5	133.9	28.5	1.2	18.7	22.3	nr	59.9	36.5	14.1	3.8	1.0	61.6	121.9	3.0	1.9	3.5	90.7	
2019/20 proj.																				
Jun	597.7	473.5	124.2	27.5	1.3	18.9	22.8	nr	61.7	37.4	14.4	4.0	1.1	58.4	127.7	4.4	2.4	3.3	88.4	
Jul	586.0	470.1	115.9	26.3	1.3	18.3	22.5	nr	61.7	37.6	14.4	4.0	1.1	58.4	127.7	3.3	2.4	3.3	87.8	
Cotton																				
2017/18	123.8	102.9	20.9	0.0	1.6	0.0	0.0	1.5	27.5	29.0	0.0	8.2	0.0	0.8	9.2	4.8	0.2	4.0	16.1	
2018/19 prel.	119.3	101.0	18.4	0.0	1.7	0.0	0.0	1.7	27.8	26.5	0.0	7.7	0.0	1.1	12.8	2.4	0.2	3.7	15.3	
2019/20 proj.																				
Jun	125.3	103.3	22.0	0.0	1.8	0.0	0.0	1.8	27.8	28.5	0.0	8.0	0.0	1.1	12.0	1.9	0.2	4.1	16.3	
Jul	125.8	103.8	22.0	0.0	1.8	0.0	0.0	1.8	27.8	29.0	0.0	8.0	0.0	1.1	12.0	1.9	0.2	4.1	16.2	

1/ Includes wheat, coarse grains, and rice (milled) shown above.

Table 02 Wheat Area, Yield, and Production

Country / Region	Area (Million hectares)				Yield (Metric tons per hectare)				Production (Million metric tons)				Change in Production			
	2017/18	Prel.	2019/20 Proj.		2017/18	Prel.	2019/20 Proj.		2017/18	Prel.	2019/20 Proj.		From last month		From last year	
		2018/19	Jun	Jul		2018/19	Jun	Jul		2018/19	Jun	Jul	MMT	Percent	MMT	Percent
World	218.28	215.44	220.19	218.71	3.49	3.39	3.55	3.53	761.88	730.90	780.83	771.46	-9.37	-1.20	40.56	5.55
United States	15.20	16.03	15.80	15.54	3.12	3.20	3.28	3.36	47.38	51.29	51.78	52.28	0.50	0.96	0.99	1.94
Total Foreign	203.09	199.41	204.39	203.17	3.52	3.41	3.57	3.54	714.50	679.61	729.05	719.18	-9.87	-1.35	39.57	5.82
European Union - 28	26.16	25.70	26.45	26.45	5.78	5.34	5.81	5.72	151.14	137.22	153.80	151.30	-2.50	-1.63	14.08	10.26
China	24.51	24.27	24.10	24.10	5.48	5.42	5.48	5.48	134.33	131.43	132.00	132.00	0.00	0.00	0.57	0.43
South Asia																
India	30.79	29.65	29.85	29.85	3.20	3.37	3.39	3.39	98.51	99.87	101.20	101.20	0.00	0.00	1.33	1.33
Pakistan	9.05	8.80	8.80	8.80	2.94	2.85	2.91	2.91	26.60	25.10	25.60	25.60	0.00	0.00	0.50	1.99
Afghanistan	2.10	2.00	2.30	2.30	2.00	1.80	2.17	2.17	4.20	3.60	5.00	5.00	0.00	0.00	1.40	38.89
Nepal	0.77	0.76	0.76	0.76	2.31	2.35	2.35	2.35	1.78	1.79	1.79	1.79	0.00	0.00	0.00	0.00
Former Soviet Union - 12																
Russia	27.37	26.34	26.50	26.30	3.11	2.72	2.94	2.82	85.17	71.69	78.00	74.20	-3.80	-4.87	2.52	3.51
Russia Winter	14.67	14.91	15.00	14.80	4.17	3.52	3.92	3.72	61.15	52.47	58.80	55.00	-3.80	-6.46	2.53	4.82
Russia Spring	12.71	11.44	11.50	11.50	1.89	1.68	1.67	1.67	24.01	19.22	19.20	19.20	0.00	0.00	-0.02	-0.08
Ukraine	6.64	6.72	7.00	7.00	4.06	3.73	4.29	4.14	26.98	25.06	30.00	29.00	-1.00	-3.33	3.94	15.74
Kazakhstan	11.91	11.35	11.10	11.40	1.24	1.23	1.24	1.23	14.80	13.95	13.80	14.00	0.20	1.45	0.05	0.38
Uzbekistan	1.44	1.40	1.40	1.40	4.79	4.29	4.86	4.86	6.90	6.00	6.80	6.80	0.00	0.00	0.80	13.33
Belarus	0.72	0.66	0.75	0.75	3.65	2.75	3.83	3.83	2.62	1.82	2.88	2.88	0.00	0.00	1.06	58.40
Canada	8.98	9.90	10.00	9.70	3.34	3.21	3.45	3.43	29.98	31.80	34.50	33.30	-1.20	-3.48	1.50	4.72
South America																
Argentina	5.80	6.04	6.20	6.20	3.19	3.23	3.23	3.23	18.50	19.50	20.00	20.00	0.00	0.00	0.50	2.56
Brazil	1.92	2.04	2.10	2.10	2.23	2.66	2.52	2.52	4.26	5.43	5.30	5.30	0.00	0.00	-0.13	-2.36
Uruguay	0.19	0.20	0.25	0.23	2.28	3.68	3.30	3.30	0.44	0.73	0.83	0.76	-0.07	-7.88	0.03	4.40
Australia	10.92	10.16	12.00	11.00	1.92	1.70	1.88	1.91	20.94	17.30	22.50	21.00	-1.50	-6.67	3.70	21.40
Africa																
Egypt	1.32	1.32	1.37	1.37	6.40	6.40	6.40	6.40	8.45	8.45	8.77	8.77	0.00	0.00	0.32	3.79
Morocco	3.32	2.85	2.75	2.75	2.14	2.58	1.60	1.60	7.09	7.34	4.40	4.40	0.00	0.00	-2.94	-40.05
Ethiopia	1.72	1.70	1.70	1.70	2.81	2.65	2.71	2.71	4.83	4.50	4.60	4.60	0.00	0.00	0.10	2.22
Algeria	1.60	2.07	2.10	2.10	1.50	1.90	1.90	1.90	2.40	3.94	4.00	4.00	0.00	0.00	0.06	1.52
Middle East																
Turkey	7.80	7.62	7.70	7.70	2.69	2.50	2.73	2.73	21.00	19.00	21.00	21.00	0.00	0.00	2.00	10.53
Iran	6.70	6.70	6.70	6.70	2.09	2.16	2.51	2.51	14.00	14.50	16.80	16.80	0.00	0.00	2.30	15.86
Iraq	2.20	1.70	2.40	2.40	1.82	1.76	2.00	2.00	4.00	3.00	4.80	4.80	0.00	0.00	1.80	60.00
Syria	1.10	1.10	1.60	1.60	2.00	1.82	3.00	3.00	2.20	2.00	4.80	4.80	0.00	0.00	2.80	140.00
Mexico	0.67	0.54	0.61	0.61	5.24	5.56	5.25	5.25	3.49	3.00	3.20	3.20	0.00	0.00	0.20	6.67
Serbia	0.54	0.68	0.60	0.60	4.26	5.04	4.83	4.83	2.30	3.40	2.90	2.90	0.00	0.00	-0.50	-14.71
Others	6.86	7.14	7.30	7.30	2.56	2.55	2.71	2.71	17.57	18.22	19.79	19.79	0.00	0.00	1.57	8.62

Table 03 Total Coarse Grain Area, Yield, and Production

Country / Region	Area (Million hectares)				Yield (Metric tons per hectare)				Production (Million metric tons)				Change in Production			
	Prel.		2019/20 Proj.		Prel.		2019/20 Proj.		Prel.		2019/20 Proj.		From last month		From last year	
	2017/18	2018/19	Jun	Jul	2017/18	2018/19	Jun	Jul	2017/18	2018/19	Jun	Jul	MMT	Percent	MMT	Percent
World	328.97	326.99	332.00	333.05	4.13	4.27	4.19	4.19	1,360.06	1,395.83	1,389.47	1,395.51	6.04	0.43	-0.32	-0.02
United States	36.76	36.39	36.57	37.12	10.46	10.44	9.84	9.84	384.39	379.92	359.93	365.13	5.20	1.45	-14.79	-3.89
Total Foreign	292.21	290.60	295.43	295.93	3.34	3.50	3.48	3.48	975.67	1,015.91	1,029.54	1,030.37	0.83	0.08	14.47	1.42
China	44.85	44.67	43.65	43.65	5.95	5.94	6.01	6.01	266.82	265.41	262.48	262.48	0.00	0.00	-2.93	-1.10
European Union	28.96	29.30	29.87	29.87	5.26	5.02	5.24	5.24	152.31	147.15	156.53	156.53	0.00	0.00	9.38	6.37
South America																
Brazil	17.83	18.73	19.41	19.41	4.77	5.57	5.38	5.38	85.06	104.31	104.46	104.46	0.00	0.00	0.15	0.14
Argentina	7.10	8.10	7.98	7.98	5.54	7.24	7.18	7.18	39.32	58.62	57.26	57.26	0.00	0.00	-1.37	-2.33
Former Soviet Union - 12																
Russia	14.59	14.03	14.55	14.55	2.86	2.50	2.67	2.67	41.72	35.00	38.90	38.80	-0.10	-0.26	3.80	10.86
Ukraine	7.59	7.58	7.67	7.77	4.49	5.87	5.61	5.60	34.07	44.50	43.05	43.55	0.50	1.16	-0.95	-2.14
Kazakhstan	2.49	2.97	2.95	2.95	1.79	1.76	1.79	1.79	4.45	5.23	5.29	5.29	0.00	0.00	0.05	1.01
Belarus	1.00	0.97	0.85	0.85	3.30	2.56	3.59	3.59	3.29	2.49	3.05	3.05	0.00	0.00	0.56	22.54
Africa																
Nigeria	14.57	14.30	14.40	14.40	1.33	1.39	1.38	1.38	19.44	19.92	19.90	19.90	0.00	0.00	-0.02	-0.10
South Africa	2.79	2.81	3.12	3.12	4.86	4.32	4.69	4.69	13.55	12.13	14.60	14.60	0.00	0.00	2.47	20.37
Tanzania	5.32	5.35	5.35	5.35	1.22	1.22	1.24	1.24	6.47	6.55	6.65	6.65	0.00	0.00	0.10	1.53
Burkina	3.85	3.85	3.85	3.85	0.97	1.25	1.14	1.14	3.73	4.82	4.40	4.40	0.00	0.00	-0.42	-8.69
Ethiopia	5.49	5.59	5.60	5.60	2.90	2.95	2.91	2.91	15.93	16.50	16.30	16.30	0.00	0.00	-0.20	-1.21
Egypt	1.02	1.07	1.12	1.12	7.09	7.14	7.18	7.18	7.26	7.66	8.06	8.06	0.00	0.00	0.40	5.22
Mali	4.78	4.50	4.50	4.50	1.36	1.54	1.18	1.18	6.51	6.94	5.30	5.30	0.00	0.00	-1.64	-23.58
India	24.17	22.02	24.23	24.16	1.94	1.97	1.93	1.92	46.94	43.35	46.65	46.44	-0.22	-0.46	3.08	7.11
Southeast Asia																
Indonesia	3.65	3.70	3.90	3.90	3.26	3.41	3.41	3.41	11.90	12.60	13.30	13.30	0.00	0.00	0.70	5.56
Philippines	2.57	2.50	2.55	2.55	3.11	3.04	3.18	3.18	7.98	7.60	8.10	8.10	0.00	0.00	0.50	6.58
Vietnam	1.04	0.95	1.00	1.00	4.72	4.80	4.85	4.85	4.91	4.56	4.85	4.85	0.00	0.00	0.29	6.36
Thailand	1.15	1.23	1.25	1.25	4.39	4.36	4.37	4.37	5.05	5.35	5.45	5.45	0.00	0.00	0.10	1.87
Mexico	9.07	8.85	9.21	9.21	3.66	3.67	3.59	3.59	33.19	32.50	33.10	33.10	0.00	0.00	0.60	1.85
Canada	4.74	5.00	5.30	5.52	5.54	5.25	5.36	5.29	26.24	26.24	28.36	29.21	0.85	3.00	2.97	11.32
Australia	5.59	5.03	5.76	5.74	2.18	2.17	2.21	2.21	12.19	10.93	12.75	12.70	-0.05	-0.39	1.76	16.11
Middle East																
Turkey	4.15	4.34	4.53	4.53	2.96	3.14	3.21	3.21	12.27	13.65	14.55	14.55	0.00	0.00	0.90	6.59
Iran	1.78	1.73	1.91	1.91	2.43	2.32	2.63	2.63	4.34	4.02	5.02	5.02	0.00	0.00	1.00	24.88
Others	72.07	71.45	70.95	71.20	1.54	1.65	1.57	1.56	110.74	117.89	111.21	111.05	-0.15	-0.14	-6.84	-5.80

World and Selected Countries and Regions; Coarse Grain includes: Barley, Corn, Millet, Mixed Grains, Oats, Rye and Sorghum

Table 04 Corn Area, Yield, and Production

Country / Region	Area (Million hectares)				Yield (Metric tons per hectare)				Production (Million metric tons)				Change in Production			
	Prel.		2019/20 Proj.		Prel.		2019/20 Proj.		Prel.		2019/20 Proj.		From last month		From last year	
	2017/18	2018/19	Jun	Jul	2017/18	2018/19	Jun	Jul	2017/18	2018/19	Jun	Jul	MMT	Percent	MMT	Percent
World	191.90	191.16	191.89	192.69	5.62	5.87	5.73	5.74	1,077.98	1,122.69	1,099.19	1,105.14	5.95	0.54	-17.55	-1.56
United States	33.48	33.08	33.35	33.83	11.08	11.07	10.42	10.42	371.10	366.29	347.49	352.44	4.95	1.43	-13.85	-3.78
Total Foreign	158.42	158.08	158.55	158.86	4.46	4.78	4.74	4.74	706.89	756.40	751.70	752.70	0.99	0.13	-3.71	-0.49
China	42.40	42.13	41.00	41.00	6.11	6.11	6.20	6.20	259.07	257.33	254.00	254.00	0.00	0.00	-3.33	-1.29
South America																
Brazil	16.60	17.50	18.10	18.10	4.94	5.77	5.58	5.58	82.00	101.00	101.00	101.00	0.00	0.00	0.00	0.00
Argentina	5.20	6.00	6.10	6.10	6.15	8.50	8.20	8.20	32.00	51.00	50.00	50.00	0.00	0.00	-1.00	-1.96
Bolivia	0.37	0.33	0.25	0.25	2.50	2.65	2.50	2.50	0.93	0.88	0.63	0.63	0.00	0.00	-0.25	-28.57
European Union	8.26	8.27	8.70	8.70	7.51	7.67	7.38	7.38	62.03	63.40	64.20	64.20	0.00	0.00	0.80	1.26
Africa																
South Africa	2.63	2.60	2.90	2.90	4.97	4.42	4.83	4.83	13.10	11.50	14.00	14.00	0.00	0.00	2.50	21.74
Nigeria	6.54	6.50	6.50	6.50	1.68	1.69	1.69	1.69	11.00	11.00	11.00	11.00	0.00	0.00	0.00	0.00
Ethiopia	2.23	2.30	2.30	2.30	3.59	3.61	3.48	3.48	8.00	8.30	8.00	8.00	0.00	0.00	-0.30	-3.61
Egypt	0.80	0.85	0.90	0.90	8.00	8.00	8.00	8.00	6.40	6.80	7.20	7.20	0.00	0.00	0.40	5.88
Tanzania	4.20	4.20	4.20	4.20	1.27	1.29	1.31	1.31	5.35	5.40	5.50	5.50	0.00	0.00	0.10	1.85
Malawi	1.73	1.70	1.70	1.70	2.01	1.65	1.94	1.94	3.46	2.80	3.30	3.30	0.00	0.00	0.50	17.86
Zambia	1.43	1.09	0.84	0.84	2.52	2.21	2.38	2.38	3.61	2.40	2.00	2.00	0.00	0.00	-0.40	-16.49
Kenya	2.09	2.20	2.00	2.00	1.52	1.82	1.60	1.60	3.19	4.00	3.20	3.20	0.00	0.00	-0.80	-20.00
Uganda	1.19	1.20	1.20	1.20	2.54	2.33	2.50	2.50	3.02	2.80	3.00	3.00	0.00	0.00	0.20	7.14
Zimbabwe	1.88	1.72	1.40	1.62	1.15	0.99	0.57	0.48	2.16	1.70	0.80	0.78	-0.02	-2.88	-0.92	-54.32
Former Soviet Union - 12																
Ukraine	4.43	4.57	4.60	4.70	5.44	7.84	7.17	7.23	24.12	35.81	33.00	34.00	1.00	3.03	-1.81	-5.04
Russia	2.69	2.37	2.60	2.60	4.90	4.81	5.19	5.19	13.20	11.42	13.50	13.50	0.00	0.00	2.09	18.27
South Asia																
India	9.38	9.20	9.50	9.50	3.07	3.02	3.05	3.05	28.75	27.80	29.00	29.00	0.00	0.00	1.20	4.32
Pakistan	1.23	1.32	1.33	1.33	4.63	4.62	4.59	4.59	5.70	6.10	6.10	6.10	0.00	0.00	0.00	0.00
Nepal	0.90	0.90	0.90	0.90	2.84	2.83	2.83	2.83	2.56	2.55	2.55	2.55	0.00	0.00	0.00	0.00
Southeast Asia																
Indonesia	3.65	3.70	3.90	3.90	3.26	3.41	3.41	3.41	11.90	12.60	13.30	13.30	0.00	0.00	0.70	5.56
Philippines	2.57	2.50	2.55	2.55	3.11	3.04	3.18	3.18	7.98	7.60	8.10	8.10	0.00	0.00	0.50	6.58
Vietnam	1.04	0.95	1.00	1.00	4.72	4.80	4.85	4.85	4.91	4.56	4.85	4.85	0.00	0.00	0.29	6.36
Thailand	1.12	1.20	1.22	1.22	4.45	4.42	4.43	4.43	5.00	5.30	5.40	5.40	0.00	0.00	0.10	1.89
Mexico	7.32	7.10	7.30	7.30	3.77	3.76	3.70	3.70	27.57	26.70	27.00	27.00	0.00	0.00	0.30	1.12
Canada	1.41	1.43	1.40	1.40	10.02	9.72	10.00	10.00	14.10	13.90	14.00	14.00	0.00	0.00	0.10	0.72
Turkey	0.53	0.53	0.52	0.52	10.00	10.75	10.58	10.58	5.30	5.70	5.50	5.50	0.00	0.00	-0.20	-3.51
Others	24.60	23.72	23.64	23.63	2.46	2.78	2.61	2.61	60.51	66.07	61.58	61.59	0.02	0.03	-4.48	-6.77

World and Selected Countries and Regions

Table 05 Barley Area, Yield, and Production

Country / Region	Area (Million hectares)				Yield (Metric tons per hectare)				Production (Million metric tons)				Change in Production			
	Prel.		2019/20 Proj.		Prel.		2019/20 Proj.		Prel.		2019/20 Proj.		From last month		From last year	
	2017/18	2018/19	Jun	Jul	2017/18	2018/19	Jun	Jul	2017/18	2018/19	Jun	Jul	MMT	Percent	MMT	Percent
World	47.48	48.34	50.55	50.66	3.03	2.89	3.01	3.00	143.99	139.50	152.06	151.87	-0.19	-0.13	12.37	8.87
United States	0.79	0.80	0.85	0.94	3.93	4.17	4.02	3.94	3.12	3.33	3.42	3.72	0.30	8.84	0.39	11.61
Total Foreign	46.69	47.54	49.70	49.71	3.02	2.86	2.99	2.98	140.87	136.16	148.64	148.15	-0.50	-0.33	11.98	8.80
European Union	12.09	12.38	12.45	12.45	4.86	4.52	4.88	4.88	58.81	55.97	60.70	60.70	0.00	0.00	4.73	8.45
Former Soviet Union - 12																
Russia	7.71	7.78	7.85	7.85	2.62	2.15	2.29	2.28	20.21	16.74	18.00	17.90	-0.10	-0.56	1.16	6.95
Ukraine	2.65	2.57	2.65	2.65	3.28	2.96	3.40	3.21	8.70	7.60	9.00	8.50	-0.50	-5.56	0.90	11.78
Kazakhstan	2.07	2.52	2.50	2.50	1.60	1.58	1.60	1.60	3.31	3.97	4.00	4.00	0.00	0.00	0.03	0.73
Belarus	0.45	0.43	0.40	0.40	3.14	2.20	3.50	3.50	1.42	0.94	1.40	1.40	0.00	0.00	0.46	48.31
Azerbaijan	0.32	0.32	0.32	0.32	2.55	2.72	2.72	2.72	0.82	0.87	0.87	0.87	0.00	0.00	0.00	0.00
Canada	2.11	2.40	2.60	2.70	3.73	3.50	3.77	3.78	7.89	8.40	9.80	10.20	0.40	4.08	1.80	21.43
Australia	4.12	3.72	4.20	4.20	2.24	2.23	2.19	2.19	9.25	8.31	9.20	9.20	0.00	0.00	0.89	10.71
Middle East																
Turkey	3.40	3.60	3.80	3.80	1.88	2.06	2.24	2.24	6.40	7.40	8.50	8.50	0.00	0.00	1.10	14.86
Iran	1.60	1.55	1.70	1.70	1.94	1.81	2.12	2.12	3.10	2.80	3.60	3.60	0.00	0.00	0.80	28.57
Iraq	0.78	0.60	1.20	1.20	1.26	1.30	1.33	1.33	0.98	0.78	1.60	1.60	0.00	0.00	0.82	105.13
Syria	0.80	0.80	1.20	1.20	0.97	0.50	1.00	1.00	0.78	0.40	1.20	1.20	0.00	0.00	0.80	200.00
Africa																
Ethiopia	0.96	1.00	1.00	1.00	2.13	2.20	2.30	2.30	2.03	2.20	2.30	2.30	0.00	0.00	0.10	4.55
Morocco	1.89	1.60	1.45	1.45	1.30	1.82	0.69	0.69	2.47	2.91	1.00	1.00	0.00	0.00	-1.91	-65.64
Algeria	0.76	1.03	1.03	1.03	1.27	1.90	2.00	2.00	0.97	1.95	2.05	2.05	0.00	0.00	0.10	5.13
Tunisia	0.39	0.31	0.40	0.40	1.02	0.99	1.63	1.63	0.40	0.31	0.65	0.65	0.00	0.00	0.34	109.68
South Africa	0.09	0.12	0.12	0.12	3.37	3.55	3.54	3.54	0.31	0.42	0.43	0.43	0.00	0.00	0.00	0.71
South America																
Argentina	0.94	1.20	1.00	1.00	4.00	3.75	4.00	4.00	3.74	4.50	4.00	4.00	0.00	0.00	-0.50	-11.11
Uruguay	0.15	0.15	0.18	0.15	2.52	3.83	3.71	3.75	0.39	0.58	0.65	0.57	-0.08	-12.31	-0.01	-0.87
Brazil	0.11	0.11	0.11	0.11	2.61	3.16	2.99	2.99	0.28	0.35	0.34	0.34	0.00	0.00	-0.02	-5.37
India	0.66	0.66	0.73	0.66	2.66	2.69	2.69	2.62	1.75	1.78	1.95	1.74	-0.22	-11.03	-0.05	-2.58
China	0.43	0.45	0.47	0.47	4.19	4.11	4.15	4.15	1.80	1.85	1.95	1.95	0.00	0.00	0.10	5.41
Mexico	0.36	0.35	0.36	0.36	2.81	2.82	2.81	2.81	1.01	1.00	1.01	1.01	0.00	0.00	0.01	1.41
Afghanistan	0.07	0.06	0.18	0.18	1.40	0.95	1.39	1.39	0.10	0.06	0.25	0.25	0.00	0.00	0.19	338.60
Others	1.77	1.83	1.81	1.81	2.26	2.23	2.32	2.32	4.00	4.07	4.20	4.20	0.00	0.00	0.13	3.09

World and Selected Countries and Regions

Table 06 Oats Area, Yield, and Production

Country / Region	Area (Million hectares)				Yield (Metric tons per hectare)				Production (Million metric tons)				Change in Production			
	2017/18	Prel.	2019/20 Proj.		2017/18	Prel.	2019/20 Proj.		2017/18	Prel.	2019/20 Proj.		From last month		From last year	
		2018/19	Jun	Jul		2018/19	Jun	Jul		2018/19	Jun	Jul	MMT	Percent	MMT	Percent
World	9.87	9.70	10.02	10.12	2.41	2.26	2.43	2.45	23.73	21.89	24.35	24.75	0.40	1.65	2.85	13.03
United States	0.33	0.35	0.36	0.37	2.22	2.33	2.39	2.43	0.72	0.82	0.87	0.90	0.02	2.76	0.08	9.82
Total Foreign	9.54	9.35	9.65	9.75	2.41	2.25	2.43	2.45	23.01	21.08	23.47	23.85	0.38	1.61	2.77	13.16
European Union	2.67	2.70	2.67	2.67	3.03	2.83	3.11	3.11	8.09	7.64	8.30	8.30	0.00	0.00	0.66	8.58
Former Soviet Union - 12																
Russia	2.78	2.73	2.80	2.80	1.96	1.73	1.79	1.79	5.45	4.72	5.00	5.00	0.00	0.00	0.29	6.04
Ukraine	0.21	0.20	0.19	0.19	2.31	2.14	2.37	2.37	0.48	0.42	0.45	0.45	0.00	0.00	0.03	6.38
Belarus	0.15	0.15	0.15	0.15	3.33	2.26	3.00	3.00	0.50	0.34	0.45	0.45	0.00	0.00	0.11	31.58
Kazakhstan	0.21	0.24	0.23	0.23	1.34	1.43	1.47	1.47	0.29	0.34	0.33	0.33	0.00	0.00	-0.01	-1.79
Canada	1.05	1.00	1.08	1.20	3.55	3.45	3.63	3.63	3.73	3.45	3.90	4.35	0.45	11.54	0.90	26.09
South America																
Argentina	0.22	0.22	0.25	0.25	2.24	2.40	2.60	2.60	0.49	0.52	0.65	0.65	0.00	0.00	0.13	25.97
Brazil	0.34	0.38	0.38	0.38	1.86	2.11	2.17	2.17	0.63	0.80	0.82	0.82	0.00	0.00	0.02	2.52
Chile	0.11	0.09	0.10	0.10	5.31	5.09	5.50	5.50	0.57	0.47	0.55	0.55	0.00	0.00	0.08	16.28
Uruguay	0.03	0.03	0.03	0.01	1.52	2.04	1.85	1.86	0.04	0.05	0.05	0.03	-0.02	-45.83	-0.03	-50.94
Oceania																
Australia	0.87	0.68	0.82	0.80	1.40	1.31	1.66	1.63	1.23	0.89	1.35	1.30	-0.05	-3.70	0.41	46.40
New Zealand	0.01	0.01	0.01	0.01	5.83	5.00	5.50	5.50	0.04	0.03	0.03	0.03	0.00	0.00	0.01	32.00
China	0.48	0.50	0.53	0.53	1.16	1.15	1.19	1.19	0.55	0.58	0.63	0.63	0.00	0.00	0.05	8.70
Africa																
Algeria	0.09	0.09	0.09	0.09	1.29	1.29	1.29	1.29	0.11	0.11	0.11	0.11	0.00	0.00	0.00	0.00
Morocco	0.03	0.05	0.05	0.05	1.17	1.40	0.89	0.89	0.04	0.06	0.04	0.04	0.00	0.00	-0.02	-36.51
South Africa	0.02	0.02	0.03	0.03	1.53	1.65	1.60	1.60	0.02	0.03	0.04	0.04	0.00	0.00	0.01	21.21
Other Europe																
Norway	0.07	0.07	0.07	0.07	4.16	2.09	4.29	4.29	0.28	0.14	0.30	0.30	0.00	0.00	0.16	108.33
Serbia	0.03	0.03	0.03	0.03	2.17	2.17	2.17	2.17	0.07	0.07	0.07	0.07	0.00	0.00	0.00	0.00
Albania	0.02	0.01	0.01	0.01	2.27	2.08	2.14	2.14	0.03	0.03	0.03	0.03	0.00	0.00	0.00	11.11
Bosnia and Herzegovina	0.01	0.01	0.01	0.01	2.73	2.79	3.00	3.00	0.03	0.04	0.04	0.04	0.00	0.00	0.00	7.69
Turkey	0.11	0.10	0.10	0.10	2.21	2.30	2.30	2.30	0.25	0.23	0.23	0.23	0.00	0.00	0.00	0.00
Mexico	0.04	0.05	0.05	0.05	1.64	2.06	1.80	1.80	0.07	0.10	0.09	0.09	0.00	0.00	-0.01	-12.62
Others	0.01	0.02	0.01	0.01	1.79	2.00	1.86	1.86	0.03	0.03	0.03	0.03	0.00	0.00	0.00	-13.33

World and Selected Countries and Regions

Table 07 Rye Area, Yield, and Production

Country / Region	Area (Million hectares)				Yield (Metric tons per hectare)				Production (Million metric tons)				Change in Production			
	2017/18	Prel.	2019/20 Proj.		2017/18	Prel.	2019/20 Proj.		2017/18	Prel.	2019/20 Proj.		From last month		From last year	
		2018/19	Jun	Jul		2018/19	Jun	Jul		2018/19	Jun	Jul	MMT	Percent	MMT	Percent
World	4.02	3.74	3.81	3.79	3.06	2.69	3.10	3.11	12.30	10.06	11.83	11.78	-0.05	-0.42	1.72	17.05
United States	0.12	0.11	0.15	0.12	2.15	1.95	1.91	1.89	0.26	0.21	0.28	0.23	-0.05	-17.92	0.02	7.01
Total Foreign	3.90	3.63	3.67	3.67	3.09	2.71	3.15	3.15	12.04	9.85	11.55	11.55	0.00	0.00	1.70	17.27
European Union	1.93	1.93	1.95	1.95	3.83	3.25	3.90	3.90	7.40	6.26	7.60	7.60	0.00	0.00	1.34	21.48
Former Soviet Union - 12																
Russia	1.17	0.96	1.00	1.00	2.17	2.00	2.00	2.00	2.54	1.91	2.00	2.00	0.00	0.00	0.09	4.49
Belarus	0.26	0.25	0.20	0.20	2.62	2.00	3.25	3.25	0.67	0.50	0.65	0.65	0.00	0.00	0.15	29.22
Ukraine	0.17	0.15	0.11	0.11	2.97	2.66	2.73	2.73	0.51	0.40	0.30	0.30	0.00	0.00	-0.10	-24.24
Kazakhstan	0.03	0.02	0.03	0.03	1.26	1.05	1.20	1.20	0.04	0.02	0.03	0.03	0.00	0.00	0.01	30.43
Turkey	0.10	0.11	0.11	0.11	3.17	2.91	2.91	2.91	0.32	0.32	0.32	0.32	0.00	0.00	0.00	0.00
Canada	0.10	0.08	0.13	0.13	3.39	2.97	3.08	3.08	0.34	0.24	0.40	0.40	0.00	0.00	0.17	70.21
South America																
Chile	0.00	0.00	0.00	0.00	5.00	5.00	5.00	5.00	0.01	0.01	0.01	0.01	0.00	0.00	0.00	0.00
Argentina	0.05	0.05	0.05	0.05	1.91	2.08	2.10	2.10	0.09	0.10	0.11	0.11	0.00	0.00	0.01	5.00
Other Europe																
Bosnia and Herzegovina	0.00	0.00	0.00	0.00	3.67	2.75	3.50	3.50	0.01	0.01	0.01	0.01	0.00	0.00	0.00	27.27
Switzerland	0.00	0.00	0.00	0.00	5.50	5.50	5.50	5.50	0.01	0.01	0.01	0.01	0.00	0.00	0.00	0.00
Serbia	0.00	0.00	0.00	0.00	2.50	2.50	2.50	2.50	0.01	0.01	0.01	0.01	0.00	0.00	0.00	0.00
Australia	0.04	0.04	0.04	0.04	0.75	0.68	0.68	0.68	0.03	0.03	0.03	0.03	0.00	0.00	0.00	0.00
Others	0.04	0.03	0.04	0.04	1.84	1.00	1.87	1.87	0.07	0.03	0.07	0.07	0.00	0.00	0.04	121.88

World and Selected Countries and Regions

Table 08 Sorghum Area, Yield, and Production

Country / Region	Area (Million hectares)				Yield (Metric tons per hectare)				Production (Million metric tons)				Change in Production			
	Prel.		2019/20 Proj.		Prel.		2019/20 Proj.		Prel.		2019/20 Proj.		From last month		From last year	
	2017/18	2018/19	Jun	Jul	2017/18	2018/19	Jun	Jul	2017/18	2018/19	Jun	Jul	MMT	Percent	MMT	Percent
World	40.45	39.92	41.07	41.10	1.44	1.49	1.42	1.42	58.44	59.34	58.42	58.33	-0.09	-0.15	-1.01	-1.70
United States	2.04	2.05	1.86	1.86	4.50	4.53	4.23	4.23	9.19	9.27	7.87	7.85	-0.03	-0.32	-1.42	-15.34
Total Foreign	38.41	37.88	39.21	39.25	1.28	1.32	1.29	1.29	49.25	50.07	50.54	50.48	-0.06	-0.12	0.41	0.82
Africa																
Nigeria	5.82	5.80	5.90	5.90	1.19	1.17	1.17	1.17	6.94	6.80	6.90	6.90	0.00	0.00	0.10	1.47
Ethiopia	1.84	1.84	1.85	1.85	2.62	2.72	2.70	2.70	4.82	5.00	5.00	5.00	0.00	0.00	0.00	0.00
Sudan	6.30	7.00	7.00	7.00	0.59	0.64	0.57	0.57	3.74	4.50	4.00	4.00	0.00	0.00	-0.50	-11.11
Burkina	1.67	1.80	1.80	1.80	0.82	1.07	1.00	1.00	1.37	1.93	1.80	1.80	0.00	0.00	-0.13	-6.74
Mali	1.39	1.50	1.50	1.50	1.03	0.98	0.87	0.87	1.42	1.47	1.30	1.30	0.00	0.00	-0.17	-11.56
Niger	3.82	3.70	3.70	3.70	0.51	0.57	0.49	0.49	1.95	2.10	1.80	1.80	0.00	0.00	-0.30	-14.29
Cameroon	0.85	0.85	0.85	0.85	1.59	1.65	1.65	1.65	1.35	1.40	1.40	1.40	0.00	0.00	0.00	0.00
Tanzania	0.78	0.80	0.80	0.80	1.02	1.00	1.00	1.00	0.80	0.80	0.80	0.80	0.00	0.00	0.00	0.00
Egypt	0.14	0.14	0.14	0.14	5.36	5.36	5.36	5.36	0.75	0.75	0.75	0.75	0.00	0.00	0.00	0.00
Uganda	0.42	0.35	0.35	0.35	0.75	0.97	0.97	0.97	0.32	0.34	0.34	0.34	0.00	0.00	0.00	0.00
Ghana	0.25	0.25	0.25	0.25	1.11	1.26	1.12	1.12	0.28	0.32	0.28	0.28	0.00	0.00	-0.04	-11.39
Mozambique	0.21	0.20	0.20	0.20	1.19	1.32	0.90	0.90	0.25	0.26	0.18	0.18	0.00	0.00	-0.08	-31.56
South Africa	0.03	0.05	0.05	0.05	3.97	3.40	2.60	2.60	0.12	0.17	0.13	0.13	0.00	0.00	-0.04	-23.53
Mexico	1.35	1.35	1.50	1.50	3.37	3.48	3.33	3.33	4.55	4.70	5.00	5.00	0.00	0.00	0.30	6.38
South America																
Argentina	0.70	0.63	0.58	0.58	4.29	3.97	4.35	4.35	3.00	2.50	2.50	2.50	0.00	0.00	0.00	0.00
Brazil	0.78	0.74	0.82	0.82	2.73	2.92	2.82	2.82	2.14	2.15	2.30	2.30	0.00	0.00	0.15	6.98
South Asia																
India	5.02	4.01	5.00	5.00	0.96	0.92	0.90	0.90	4.80	3.70	4.50	4.50	0.00	0.00	0.80	21.62
Pakistan	0.26	0.24	0.24	0.24	0.60	0.59	0.58	0.58	0.15	0.14	0.14	0.14	0.00	0.00	0.00	0.00
China	0.68	0.72	0.75	0.75	4.74	4.79	4.80	4.80	3.20	3.45	3.60	3.60	0.00	0.00	0.15	4.35
Australia	0.46	0.50	0.60	0.60	2.72	2.58	2.83	2.83	1.26	1.28	1.70	1.70	0.00	0.00	0.42	33.02
European Union	0.12	0.13	0.13	0.13	5.42	5.68	5.58	5.58	0.67	0.73	0.73	0.73	0.00	0.00	-0.01	-1.09
Others	5.52	5.28	5.21	5.25	0.98	1.06	1.04	1.02	5.39	5.58	5.40	5.34	-0.06	-1.11	-0.24	-4.34

World and Selected Countries and Regions

Table 09 Rice Area, Yield, and Production
World and Selected Countries and Regions

Country / Region	Area (Million hectares)				Yield (Metric tons per hectare)				Production (Million metric tons)				Change in Production			
	2017/18	Prel.	2019/20 Proj.		2017/18	Prel.	2019/20 Proj.		2017/18	Prel.	2019/20 Proj.		From last month		From last year	
		2018/19	Jun	Jul		2018/19	Jun	Jul		2018/19	Jun	Jul	MMT	Percent	MMT	Percent
World	162.08	163.51	163.08	163.11	4.56	4.55	4.56	4.56	494.88	498.65	497.62	497.82	0.20	0.04	-0.83	-0.17
United States	0.96	1.18	1.04	1.10	8.41	8.62	8.65	8.63	5.66	7.12	6.29	6.63	0.34	5.36	-0.49	-6.91
Total Foreign	161.12	162.33	162.04	162.01	4.53	4.52	4.53	4.53	489.22	491.53	491.33	491.19	-0.14	-0.03	-0.34	-0.07
East Asia																
China	30.75	30.19	30.00	30.00	6.92	7.03	6.95	6.95	148.87	148.49	146.00	146.00	0.00	0.00	-2.49	-1.68
Japan	1.56	1.55	1.55	1.55	6.87	6.78	6.82	6.82	7.79	7.65	7.70	7.70	0.00	0.00	0.05	0.65
Korea, South	0.76	0.74	0.73	0.73	7.01	6.99	7.07	7.07	3.97	3.87	3.88	3.88	0.00	0.00	0.01	0.31
Korea, North	0.48	0.50	0.50	0.50	5.09	4.18	4.18	4.18	1.57	1.36	1.36	1.36	0.00	0.00	0.00	0.00
South Asia																
India	42.90	44.50	44.00	44.00	3.94	3.90	3.92	3.92	112.76	115.63	115.00	115.00	0.00	0.00	-0.63	-0.54
Bangladesh	11.27	11.77	11.83	11.83	4.35	4.46	4.48	4.48	32.65	35.00	35.30	35.30	0.00	0.00	0.30	0.86
Pakistan	2.80	2.88	2.90	2.90	4.02	3.85	3.88	3.88	7.50	7.40	7.50	7.50	0.00	0.00	0.10	1.35
Nepal	1.49	1.50	1.50	1.50	3.34	3.53	3.53	3.53	3.31	3.53	3.53	3.53	0.00	0.00	0.00	0.00
Sri Lanka	0.77	1.10	1.00	1.00	4.30	3.96	4.25	4.25	2.25	2.96	2.89	2.89	0.00	0.00	-0.07	-2.36
Southeast Asia																
Indonesia	12.25	12.20	12.25	12.25	4.76	4.79	4.81	4.81	37.00	37.10	37.40	37.40	0.00	0.00	0.30	0.81
Vietnam	7.65	7.55	7.50	7.50	5.79	5.87	5.97	5.97	27.66	27.71	28.00	28.00	0.00	0.00	0.29	1.04
Thailand	10.76	10.90	11.01	11.01	2.90	2.86	2.88	2.88	20.58	20.55	20.90	20.90	0.00	0.00	0.35	1.70
Burma	7.10	7.10	7.10	7.10	2.90	2.90	2.93	2.93	13.20	13.18	13.30	13.30	0.00	0.00	0.13	0.95
Philippines	4.84	4.74	4.85	4.85	4.01	3.96	3.99	3.99	12.24	11.80	12.20	12.20	0.00	0.00	0.40	3.39
Cambodia	3.18	3.19	3.19	3.19	2.86	2.89	2.92	2.92	5.55	5.63	5.69	5.69	0.00	0.00	0.06	0.98
Laos	0.96	0.82	0.99	0.99	3.30	3.25	3.30	3.30	2.00	1.68	2.05	2.05	0.00	0.00	0.37	22.02
Malaysia	0.70	0.70	0.70	0.70	4.03	4.01	4.01	4.01	1.82	1.83	1.83	1.83	0.00	0.00	0.00	0.00
South America																
Brazil	1.97	1.72	1.73	1.70	6.12	6.25	6.24	6.24	8.20	7.31	7.34	7.21	-0.14	-1.85	-0.10	-1.40
Peru	0.42	0.44	0.44	0.44	7.20	7.16	7.33	7.33	2.10	2.15	2.20	2.20	0.00	0.00	0.05	2.33
Africa																
Egypt	0.76	0.46	0.50	0.50	8.18	8.78	8.84	8.84	4.30	2.80	3.05	3.05	0.00	0.00	0.25	8.93
Madagascar	1.43	1.50	1.50	1.50	2.18	2.67	2.80	2.80	1.98	2.56	2.69	2.69	0.00	0.00	0.13	5.00
Nigeria	3.60	3.60	3.60	3.60	2.06	2.11	2.16	2.16	4.66	4.79	4.90	4.90	0.00	0.00	0.11	2.34
European Union	0.43	0.42	0.42	0.42	6.78	6.88	6.97	6.97	2.03	1.98	2.04	2.04	0.00	0.00	0.06	3.08
Iran	0.57	0.58	0.58	0.58	5.33	5.25	5.25	5.25	2.01	1.99	1.99	1.99	0.00	0.00	0.00	0.00
Others	11.73	11.70	11.68	11.68	3.01	2.94	2.95	2.95	23.22	22.59	22.59	22.59	0.00	0.00	0.00	-0.01

Yield is on a rough basis, before the milling process. Production is on a milled basis, after the milling process.

Table 10 Total Oilseed Area, Yield, and Production

World and Selected Countries and Regions

Country / Region	Area (Million hectares)				Yield (Metric tons per hectare)				Production (Million metric tons)				Change in Production			
	Prel.		2019/20 Proj.		Prel.		2019/20 Proj.		Prel.		2019/20 Proj.		From last month		From last year	
	2017/18	2018/19	Jun	Jul	2017/18	2018/19	Jun	Jul	2017/18	2018/19	Jun	Jul	MMT	Percent	MMT	Percent
World Total	--	--	--	--	--	--	--	--	580.70	602.38	597.74	586.04	-11.71	-1.96	-16.34	-2.71
Total Foreign	--	--	--	--	--	--	--	--	449.21	468.53	473.50	470.09	-3.41	-0.72	1.57	0.33
Oilseed, Copra	--	--	--	--	--	--	--	--	5.94	5.98	5.81	5.81	0.00	0.00	-0.17	-2.84
Oilseed, Palm Kernel	--	--	--	--	--	--	--	--	18.76	19.50	20.05	20.05	0.00	0.00	0.56	2.86
Major Oilseeds	247.34	248.61	249.46	246.42	2.25	2.32	2.29	2.27	556.00	576.90	571.88	560.18	-11.71	-2.05	-16.73	-2.90
United States	42.80	41.63	40.82	39.01	3.07	3.22	3.04	2.97	131.48	133.85	124.25	115.95	-8.30	-6.68	-17.91	-13.38
Foreign Oilseeds	204.54	206.98	208.63	207.41	2.08	2.14	2.15	2.14	424.52	443.05	447.63	444.23	-3.41	-0.76	1.18	0.27
South America	61.57	63.55	65.14	65.14	2.97	3.12	3.10	3.10	183.13	198.57	201.78	202.10	0.32	0.16	3.53	1.78
Brazil	36.56	37.91	38.69	38.69	3.44	3.21	3.30	3.30	125.67	121.73	127.60	127.60	0.00	0.00	5.87	4.82
Argentina	18.70	19.57	20.03	20.03	2.27	3.15	2.92	2.92	42.52	61.57	58.40	58.42	0.02	0.03	-3.15	-5.11
Paraguay	3.47	3.38	3.67	3.67	2.99	2.70	2.81	2.81	10.39	9.12	10.31	10.31	0.00	0.00	1.19	13.08
Bolivia	1.53	1.52	1.58	1.58	1.77	1.83	1.90	1.90	2.71	2.78	3.00	3.00	0.00	0.00	0.22	7.91
Uruguay	1.15	1.02	1.01	1.01	1.23	2.86	1.98	2.28	1.41	2.92	2.00	2.30	0.30	15.00	-0.62	-21.18
China	24.16	24.18	25.00	25.00	2.46	2.48	2.47	2.47	59.49	59.88	61.73	61.73	0.00	0.00	1.85	3.09
South Asia	38.42	39.06	39.83	40.08	1.02	1.02	1.03	1.03	39.02	39.95	41.01	41.22	0.21	0.52	1.28	3.20
India	34.96	35.85	36.50	36.75	0.99	1.00	1.00	1.00	34.64	35.73	36.64	36.85	0.21	0.58	1.12	3.13
Pakistan	3.11	2.85	2.98	2.98	1.27	1.33	1.33	1.33	3.96	3.80	3.96	3.96	0.00	0.00	0.16	4.16
European Union	12.43	12.41	11.33	11.28	2.85	2.66	2.89	2.82	35.37	32.99	32.74	31.79	-0.95	-2.90	-1.20	-3.63
Former Soviet Union - 12	24.37	25.48	25.26	24.95	1.66	1.79	1.83	1.83	40.45	45.72	46.34	45.56	-0.78	-1.68	-0.16	-0.35
Russia	10.66	12.18	12.20	11.95	1.45	1.54	1.55	1.53	15.48	18.73	18.85	18.30	-0.55	-2.92	-0.43	-2.27
Ukraine	9.57	9.23	9.20	9.10	2.07	2.42	2.47	2.47	19.81	22.31	22.75	22.50	-0.25	-1.10	0.19	0.85
Uzbekistan	1.25	1.10	1.01	1.05	1.21	1.14	1.24	1.21	1.51	1.26	1.25	1.27	0.02	1.92	0.01	1.03
Canada	12.23	11.68	11.03	10.62	2.38	2.44	2.49	2.48	29.10	28.46	27.46	26.35	-1.11	-4.05	-2.11	-7.42
Africa	21.35	22.15	21.74	21.74	0.99	1.03	0.95	0.95	21.23	22.79	20.73	20.73	0.01	0.02	-2.05	-9.00
Nigeria	4.09	4.09	4.07	4.07	1.31	1.36	1.16	1.16	5.34	5.58	4.70	4.70	0.00	0.00	-0.88	-15.70
South Africa	1.48	1.31	1.51	1.51	1.73	1.46	1.57	1.58	2.55	1.91	2.37	2.38	0.01	0.21	0.47	24.61
Tanzania	1.35	1.50	1.50	1.50	0.89	0.86	0.85	0.85	1.20	1.29	1.28	1.28	0.00	0.00	-0.01	-0.86
Southeast Asia	3.22	3.19	3.15	3.15	1.40	1.39	1.39	1.39	4.52	4.43	4.39	4.39	0.00	0.00	-0.05	-1.08
Indonesia	1.00	0.98	0.95	0.95	1.61	1.57	1.58	1.58	1.62	1.55	1.50	1.50	0.00	0.00	-0.05	-2.91
Burma	1.88	1.88	1.88	1.88	1.19	1.18	1.18	1.18	2.24	2.22	2.21	2.21	0.00	0.00	-0.01	-0.27
Australia	3.76	2.25	3.02	2.32	1.44	1.33	1.44	1.41	5.43	2.98	4.36	3.26	-1.10	-25.25	0.27	9.15
Turkey	1.25	1.33	1.36	1.36	2.53	2.63	2.40	2.40	3.17	3.49	3.26	3.26	0.00	0.00	-0.22	-6.42
Others	1.77	1.73	1.78	1.78	2.04	2.20	2.16	2.16	3.62	3.80	3.84	3.84	0.00	0.00	0.04	1.08

World Total and Total Foreign: (Major Oilseeds plus copra and palm kernel) Major Oilseeds: (soybeans, sunflowerseeds, peanuts(inshell), cottonseed and rapeseed)

Table 11 Soybean Area, Yield, and Production

Country / Region	Area (Million hectares)				Yield (Metric tons per hectare)				Production (Million metric tons)				Change in Production			
	Prel.		2019/20 Proj.		Prel.		2019/20 Proj.		Prel.		2019/20 Proj.		From last month		From last year	
	2017/18	2018/19	Jun	Jul	2017/18	2018/19	Jun	Jul	2017/18	2018/19	Jun	Jul	MMT	Percent	MMT	Percent
World	124.60	125.67	126.67	124.73	2.74	2.89	2.81	2.78	341.53	362.87	355.39	347.04	-8.35	-2.35	-15.83	-4.36
United States	36.24	35.66	33.92	32.08	3.31	3.47	3.33	3.26	120.07	123.66	112.95	104.64	-8.30	-7.35	-19.02	-15.38
Total Foreign	88.36	90.01	92.75	92.65	2.51	2.66	2.61	2.62	221.47	239.21	242.45	242.40	-0.05	-0.02	3.19	1.33
South America																
Brazil	35.15	36.10	36.90	36.90	3.47	3.24	3.33	3.33	122.00	117.00	123.00	123.00	0.00	0.00	6.00	5.13
Argentina	16.30	17.10	17.50	17.50	2.32	3.27	3.03	3.03	37.80	56.00	53.00	53.00	0.00	0.00	-3.00	-5.36
Paraguay	3.40	3.30	3.60	3.60	3.03	2.73	2.83	2.83	10.30	9.00	10.20	10.20	0.00	0.00	1.20	13.33
Bolivia	1.40	1.40	1.45	1.45	1.86	1.93	2.00	2.00	2.60	2.70	2.90	2.90	0.00	0.00	0.20	7.41
Uruguay	1.10	0.97	0.95	0.95	1.21	2.93	2.00	2.32	1.33	2.83	1.90	2.20	0.30	15.79	-0.63	-22.21
East Asia																
China	8.25	8.40	9.10	9.10	1.84	1.89	1.87	1.87	15.20	15.90	17.00	17.00	0.00	0.00	1.10	6.92
Korea, South	0.05	0.05	0.05	0.05	1.87	1.75	1.80	1.80	0.09	0.09	0.09	0.09	0.00	0.00	0.00	3.37
Korea, North	0.15	0.15	0.15	0.15	1.49	1.50	1.50	1.50	0.22	0.23	0.23	0.23	0.00	0.00	0.00	0.00
Japan	0.15	0.15	0.15	0.15	1.66	1.45	1.69	1.69	0.25	0.21	0.25	0.25	0.00	0.00	0.04	18.78
India	10.40	11.00	11.60	11.60	0.80	1.05	0.94	0.94	8.35	11.50	10.90	10.90	0.00	0.00	-0.60	-5.22
Canada	2.94	2.55	2.20	2.20	2.63	2.86	2.86	2.82	7.72	7.30	6.30	6.20	-0.10	-1.59	-1.10	-15.07
Former Soviet Union - 12																
Russia	2.57	2.74	2.90	2.90	1.41	1.47	1.48	1.48	3.62	4.03	4.30	4.30	0.00	0.00	0.27	6.78
Ukraine	1.98	1.73	1.70	1.60	1.97	2.58	2.38	2.38	3.89	4.46	4.05	3.80	-0.25	-6.17	-0.66	-14.82
European Union	0.93	0.93	0.95	0.95	2.74	2.88	2.92	2.92	2.54	2.68	2.78	2.78	0.00	0.00	0.09	3.51
Southeast Asia																
Indonesia	0.42	0.41	0.40	0.40	1.29	1.27	1.28	1.28	0.54	0.52	0.51	0.51	0.00	0.00	-0.01	-1.92
Vietnam	0.06	0.05	0.05	0.05	1.50	1.53	1.52	1.52	0.09	0.08	0.08	0.08	0.00	0.00	-0.01	-6.17
Thailand	0.04	0.04	0.03	0.03	1.57	1.57	1.53	1.53	0.06	0.06	0.05	0.05	0.00	0.00	0.00	-5.45
Burma	0.15	0.15	0.15	0.15	1.07	1.07	1.07	1.07	0.16	0.16	0.16	0.16	0.00	0.00	0.00	0.00
Serbia	0.20	0.22	0.22	0.22	2.30	2.84	2.73	2.73	0.46	0.63	0.60	0.60	0.00	0.00	-0.03	-4.00
Mexico	0.26	0.19	0.24	0.24	1.65	1.75	1.69	1.69	0.43	0.34	0.40	0.40	0.00	0.00	0.07	19.40
Africa																
South Africa	0.79	0.73	0.80	0.80	1.96	1.67	1.81	1.81	1.54	1.22	1.45	1.45	0.00	0.00	0.23	18.85
Nigeria	1.00	1.00	1.00	1.00	0.99	1.05	1.10	1.10	0.99	1.05	1.10	1.10	0.00	0.00	0.05	4.36
Zambia	0.23	0.19	0.20	0.20	1.56	1.58	1.43	1.43	0.35	0.30	0.28	0.28	0.00	0.00	-0.02	-7.26
Uganda	0.05	0.05	0.05	0.05	0.60	0.60	0.60	0.60	0.03	0.03	0.03	0.03	0.00	0.00	0.00	0.00
Middle East																
Iran	0.08	0.07	0.07	0.07	2.41	2.29	2.43	2.43	0.20	0.16	0.17	0.17	0.00	0.00	0.01	6.25
Turkey	0.02	0.03	0.03	0.03	3.75	3.80	3.70	3.70	0.09	0.10	0.10	0.10	0.00	0.00	0.01	5.26
Others	0.32	0.32	0.32	0.32	1.95	1.99	1.97	1.97	0.62	0.64	0.62	0.62	0.00	0.00	-0.02	-3.11

World and Selected Countries and Regions

Table 12 Cottonseed Area, Yield, and Production

Country / Region	Area (Million hectares)				Yield (Metric tons per hectare)				Production (Million metric tons)				Change in Production			
	Prel.		2019/20 Proj.		Prel.		2019/20 Proj.		Prel.		2019/20 Proj.		From last month		From last year	
	2017/18	2018/19	Jun	Jul	2017/18	2018/19	Jun	Jul	2017/18	2018/19	Jun	Jul	MMT	Percent	MMT	Percent
World	33.10	32.89	33.78	34.05	1.36	1.33	1.35	1.35	45.15	43.67	45.75	45.96	0.22	0.47	2.30	5.26
United States	4.49	4.13	5.07	5.06	1.30	1.24	1.24	1.24	5.83	5.11	6.29	6.26	-0.02	-0.37	1.16	22.63
Total Foreign	28.61	28.76	28.71	28.99	1.37	1.34	1.37	1.37	39.33	38.56	39.46	39.70	0.24	0.60	1.14	2.95
South Asia																
India	12.60	12.60	12.35	12.60	0.98	0.89	0.98	0.98	12.31	11.25	12.10	12.31	0.21	1.75	1.06	9.43
Pakistan	2.70	2.40	2.50	2.50	1.32	1.39	1.39	1.39	3.55	3.34	3.48	3.48	0.00	0.00	0.15	4.38
China	3.40	3.50	3.45	3.45	3.18	3.11	3.15	3.15	10.80	10.88	10.88	10.88	0.00	0.00	0.00	0.00
Former Soviet Union - 12																
Uzbekistan	1.25	1.10	1.01	1.05	1.21	1.14	1.24	1.21	1.51	1.26	1.25	1.27	0.02	1.92	0.01	1.03
Turkmenistan	0.55	0.55	0.55	0.55	0.96	0.65	0.81	0.81	0.53	0.36	0.44	0.44	0.00	0.00	0.09	24.16
Tajikistan	0.19	0.18	0.18	0.18	0.97	0.98	0.98	0.98	0.18	0.18	0.18	0.18	0.00	0.00	0.00	0.00
Kazakhstan	0.13	0.13	0.12	0.12	0.94	1.01	1.03	1.03	0.12	0.13	0.12	0.12	0.00	0.00	-0.01	-6.98
South America																
Brazil	1.18	1.60	1.55	1.55	2.57	2.63	2.53	2.53	3.02	4.19	3.93	3.93	0.00	0.00	-0.26	-6.25
Argentina	0.32	0.38	0.38	0.38	0.87	1.09	1.02	1.02	0.28	0.41	0.39	0.39	0.00	0.00	-0.03	-6.28
Middle East																
Turkey	0.47	0.52	0.54	0.54	2.77	2.60	2.55	2.55	1.30	1.35	1.38	1.38	0.00	0.00	0.03	1.85
Syria	0.03	0.03	0.03	0.03	2.17	2.36	2.40	2.40	0.07	0.06	0.06	0.06	0.00	0.00	0.00	1.69
Iran	0.09	0.08	0.08	0.08	0.96	1.16	1.16	1.16	0.08	0.09	0.09	0.09	0.00	0.00	0.00	0.00
Australia	0.53	0.30	0.26	0.26	2.72	2.40	2.19	2.19	1.44	0.72	0.57	0.57	0.00	0.00	-0.15	-20.94
European Union	0.30	0.31	0.33	0.33	1.65	1.76	1.74	1.74	0.49	0.55	0.57	0.57	0.00	0.00	0.02	3.45
Africa																
Burkina	0.85	0.64	0.73	0.73	0.39	0.40	0.46	0.46	0.33	0.25	0.33	0.33	0.00	0.00	0.08	30.71
Mali	0.71	0.72	0.74	0.74	0.56	0.49	0.54	0.54	0.40	0.36	0.40	0.40	0.00	0.00	0.05	13.20
Cameroon	0.23	0.25	0.25	0.25	1.11	1.20	1.13	1.13	0.25	0.30	0.28	0.28	0.00	0.00	-0.02	-6.00
Cote d'Ivoire	0.33	0.39	0.41	0.41	0.66	0.60	0.54	0.54	0.22	0.23	0.22	0.22	0.00	0.00	-0.01	-5.13
Benin	0.53	0.65	0.68	0.68	0.71	0.71	0.71	0.71	0.38	0.46	0.48	0.48	0.00	0.00	0.02	3.46
Tanzania	0.35	0.50	0.50	0.50	0.29	0.37	0.35	0.35	0.10	0.19	0.18	0.18	0.00	0.00	-0.01	-5.91
Egypt	0.09	0.14	0.10	0.10	1.00	1.08	1.06	1.06	0.09	0.15	0.11	0.11	0.00	0.00	-0.05	-30.26
Nigeria	0.27	0.27	0.27	0.27	0.38	0.38	0.38	0.38	0.10	0.10	0.10	0.10	0.00	0.00	0.00	0.00
Uganda	0.08	0.08	0.08	0.08	1.91	1.40	1.45	1.45	0.15	0.11	0.11	0.11	0.00	0.00	0.00	3.81
Zimbabwe	0.20	0.20	0.20	0.20	0.52	0.38	0.36	0.36	0.10	0.08	0.07	0.07	0.00	0.00	0.00	-5.26
Sudan	0.18	0.18	0.20	0.20	1.35	1.42	1.54	1.54	0.24	0.26	0.31	0.31	0.00	0.00	0.05	20.78
Mexico	0.21	0.24	0.24	0.24	2.52	2.41	2.48	2.48	0.53	0.57	0.59	0.59	0.00	0.00	0.02	3.48
Burma	0.25	0.24	0.24	0.24	1.24	1.23	1.20	1.20	0.31	0.30	0.29	0.29	0.00	0.00	-0.01	-2.03
Others	0.63	0.60	0.77	0.76	0.72	0.75	0.73	0.74	0.45	0.45	0.56	0.56	0.00	0.36	0.12	25.67

World and Selected Countries and Regions

Table 13 Peanut Area, Yield, and Production

Country / Region	Area (Million hectares)				Yield (Metric tons per hectare)				Production (Million metric tons)				Change in Production			
	Prel.		2019/20 Proj.		Prel.		2019/20 Proj.		Prel.		2019/20 Proj.		From last month		From last year	
	2017/18	2018/19	Jun	Jul	2017/18	2018/19	Jun	Jul	2017/18	2018/19	Jun	Jul	MMT	Percent	MMT	Percent
World	27.07	27.33	26.82	26.78	1.72	1.69	1.68	1.68	46.58	46.07	44.99	44.88	-0.11	-0.23	-1.19	-2.57
United States	0.72	0.55	0.56	0.54	4.49	4.47	4.54	4.54	3.23	2.48	2.56	2.43	-0.13	-4.89	-0.05	-1.86
Total Foreign	26.35	26.78	26.25	26.25	1.64	1.63	1.62	1.62	43.35	43.59	42.43	42.45	0.02	0.05	-1.14	-2.62
China	4.61	4.56	4.60	4.60	3.71	3.73	3.80	3.80	17.09	17.00	17.50	17.50	0.00	0.00	0.50	2.94
Africa																
Nigeria	2.82	2.82	2.80	2.80	1.51	1.57	1.25	1.25	4.25	4.42	3.50	3.50	0.00	0.00	-0.92	-20.85
Sudan	2.22	3.07	2.30	2.30	0.74	0.94	0.78	0.78	1.65	2.88	1.80	1.80	0.00	0.00	-1.08	-37.59
Senegal	1.25	1.25	1.20	1.20	1.13	1.16	0.92	0.92	1.41	1.45	1.10	1.10	0.00	0.00	-0.35	-24.14
Cameroon	0.43	0.43	0.43	0.43	1.40	1.40	1.40	1.40	0.60	0.60	0.60	0.60	0.00	0.00	0.00	0.00
Ghana	0.34	0.34	0.34	0.34	1.28	1.55	1.31	1.31	0.43	0.52	0.44	0.44	0.00	0.00	-0.08	-15.38
Chad	0.77	0.77	0.77	0.77	1.13	1.16	1.10	1.10	0.87	0.89	0.85	0.85	0.00	0.00	-0.04	-4.49
Malawi	0.39	0.37	0.37	0.37	0.99	0.88	0.88	0.88	0.39	0.33	0.33	0.33	0.00	0.00	0.00	0.00
Congo (Kinshasa)	0.50	0.50	0.50	0.50	0.85	0.85	0.85	0.85	0.42	0.42	0.42	0.42	0.00	0.00	0.00	0.00
Niger	0.92	0.93	0.90	0.90	0.50	0.64	0.56	0.56	0.46	0.59	0.50	0.50	0.00	0.00	-0.09	-15.54
Mali	0.39	0.38	0.43	0.43	0.78	1.31	1.00	1.00	0.30	0.49	0.43	0.43	0.00	0.00	-0.07	-13.44
Uganda	0.43	0.43	0.43	0.43	0.71	0.71	0.71	0.71	0.30	0.30	0.30	0.30	0.00	0.00	0.00	0.00
Burkina	0.56	0.56	0.56	0.56	0.60	0.59	0.80	0.80	0.33	0.33	0.45	0.45	0.00	0.00	0.12	36.36
Guinea	0.67	0.68	0.68	0.68	1.04	1.13	1.10	1.10	0.70	0.77	0.75	0.75	0.00	0.00	-0.02	-2.60
Egypt	0.06	0.06	0.06	0.06	3.20	3.20	3.20	3.20	0.21	0.21	0.21	0.21	0.00	0.00	0.00	0.00
Central African Republic	0.10	0.10	0.10	0.10	1.50	1.50	1.50	1.50	0.15	0.15	0.15	0.15	0.00	0.00	0.00	0.00
South Africa	0.06	0.02	0.05	0.05	1.36	1.35	1.50	1.50	0.08	0.03	0.08	0.08	0.00	0.00	0.05	177.78
Mozambique	0.40	0.38	0.38	0.38	0.23	0.34	0.34	0.34	0.09	0.13	0.13	0.13	0.00	0.00	0.00	0.00
Cote d'Ivoire	0.15	0.15	0.15	0.15	1.39	1.45	1.45	1.45	0.20	0.21	0.21	0.21	0.00	0.00	0.00	0.00
Benin	0.16	0.19	0.19	0.19	0.88	1.19	0.92	0.92	0.14	0.23	0.18	0.18	0.00	0.00	-0.05	-22.57
South Asia																
India	4.93	4.70	5.00	5.00	1.35	1.00	1.15	1.15	6.65	4.70	5.75	5.75	0.00	0.00	1.05	22.34
Pakistan	0.09	0.10	0.09	0.09	0.97	0.95	0.98	0.98	0.09	0.09	0.09	0.09	0.00	0.00	0.00	1.11
Southeast Asia																
Indonesia	0.58	0.57	0.55	0.55	1.85	1.80	1.80	1.80	1.08	1.03	0.99	0.99	0.00	0.00	-0.04	-3.41
Burma	0.89	0.89	0.89	0.89	1.55	1.55	1.55	1.55	1.38	1.38	1.38	1.38	0.00	0.00	0.00	0.00
Vietnam	0.19	0.19	0.19	0.19	2.37	2.41	2.47	2.47	0.45	0.46	0.47	0.47	0.00	0.00	0.01	2.40
Thailand	0.02	0.02	0.02	0.02	1.67	1.67	1.67	1.67	0.04	0.04	0.04	0.04	0.00	0.00	0.00	0.00
South America																
Argentina	0.38	0.32	0.33	0.32	2.27	4.13	3.63	3.75	0.87	1.32	1.18	1.20	0.02	1.69	-0.12	-8.88
Brazil	0.14	0.15	0.16	0.16	3.70	2.97	3.55	3.55	0.51	0.43	0.55	0.55	0.00	0.00	0.12	27.61
Mexico	0.06	0.06	0.06	0.06	1.70	1.70	1.73	1.73	0.10	0.10	0.10	0.10	0.00	0.00	0.01	5.15
Others	1.88	1.83	1.75	1.75	1.13	1.15	1.13	1.13	2.13	2.12	1.98	1.98	0.00	0.00	-0.14	-6.48

Table 14 Sunflowerseed Area, Yield, and Production

Country / Region	Area (Million hectares)				Yield (Metric tons per hectare)				Production (Million metric tons)				Change in Production			
	Prel.		2019/20 Proj.		Prel.		2019/20 Proj.		Prel.		2019/20 Proj.		From last month		From last year	
	2017/18	2018/19	Jun	Jul	2017/18	2018/19	Jun	Jul	2017/18	2018/19	Jun	Jul	MMT	Percent	MMT	Percent
World	26.05	26.19	26.12	25.88	1.84	1.97	1.95	1.95	47.84	51.51	50.95	50.51	-0.44	-0.86	-1.00	-1.95
United States	0.54	0.50	0.52	0.54	1.80	1.94	1.87	1.87	0.97	0.96	0.98	1.00	0.02	2.36	0.04	4.06
Total Foreign	25.51	25.69	25.60	25.34	1.84	1.97	1.95	1.95	46.87	50.55	49.98	49.51	-0.46	-0.93	-1.04	-2.06
Former Soviet Union - 12																
Russia	7.15	7.94	7.85	7.60	1.45	1.60	1.59	1.58	10.36	12.71	12.50	12.00	-0.50	-4.00	-0.71	-5.59
Ukraine	6.80	6.50	6.20	6.20	2.01	2.31	2.39	2.39	13.70	15.00	14.80	14.80	0.00	0.00	-0.20	-1.33
Kazakhstan	0.88	0.85	0.85	0.85	1.02	1.00	1.06	1.06	0.90	0.85	0.90	0.90	0.00	0.00	0.05	6.13
European Union	4.39	4.10	4.25	4.25	2.32	2.37	2.28	2.29	10.17	9.70	9.70	9.75	0.05	0.52	0.05	0.52
South America																
Argentina	1.68	1.75	1.80	1.80	2.11	2.17	2.10	2.10	3.54	3.80	3.78	3.78	0.00	0.00	-0.02	-0.53
Uruguay	0.05	0.06	0.06	0.06	1.56	1.61	1.67	1.67	0.08	0.09	0.10	0.10	0.00	0.00	0.01	11.11
Bolivia	0.13	0.12	0.13	0.13	0.80	0.70	0.77	0.77	0.11	0.08	0.10	0.10	0.00	0.00	0.02	25.00
Brazil	0.10	0.07	0.08	0.08	1.48	1.70	1.50	1.50	0.14	0.11	0.12	0.12	0.00	0.00	0.01	7.14
Paraguay	0.03	0.03	0.03	0.03	1.66	1.69	1.70	1.70	0.05	0.05	0.05	0.05	0.00	0.00	0.00	-5.56
China	1.25	1.25	1.25	1.25	2.50	2.60	2.60	2.60	3.12	3.25	3.25	3.25	0.00	0.00	0.00	0.00
South Asia																
India	0.33	0.35	0.25	0.25	0.70	0.80	0.75	0.75	0.23	0.28	0.19	0.19	0.00	0.00	-0.09	-32.86
Pakistan	0.08	0.12	0.14	0.14	1.13	1.20	1.04	1.04	0.09	0.14	0.15	0.15	0.00	0.00	0.00	0.69
Middle East																
Turkey	0.70	0.72	0.73	0.73	2.21	2.52	2.12	2.12	1.55	1.80	1.55	1.55	0.00	0.00	-0.25	-13.89
Iran	0.04	0.04	0.04	0.04	1.08	1.08	1.08	1.08	0.04	0.04	0.04	0.04	0.00	0.00	0.00	0.00
Israel	0.01	0.01	0.01	0.01	1.60	1.60	1.60	1.60	0.02	0.02	0.02	0.02	0.00	0.00	0.00	0.00
Africa																
Egypt	0.01	0.01	0.01	0.01	2.38	2.38	2.38	2.38	0.02	0.02	0.02	0.02	0.00	0.00	0.00	0.00
Morocco	0.02	0.02	0.02	0.02	1.26	1.29	1.25	1.25	0.02	0.03	0.03	0.03	0.00	0.00	0.00	-7.41
South Africa	0.60	0.52	0.61	0.61	1.43	1.18	1.23	1.23	0.86	0.61	0.75	0.75	0.00	0.00	0.14	22.95
Burma	0.60	0.60	0.60	0.60	0.65	0.65	0.65	0.65	0.39	0.39	0.39	0.39	0.00	0.00	0.00	0.00
Canada	0.03	0.03	0.03	0.02	2.23	2.11	2.07	2.05	0.06	0.06	0.06	0.05	-0.01	-22.41	-0.01	-21.05
Australia	0.01	0.02	0.02	0.02	1.86	1.21	1.25	1.25	0.03	0.02	0.03	0.03	0.00	0.00	0.00	8.70
Others	0.63	0.61	0.64	0.64	2.21	2.48	2.28	2.28	1.38	1.50	1.47	1.47	0.00	0.00	-0.04	-2.33

World and Selected Countries and Regions

Table 15 Rapeseed Area, Yield, and Production

Country / Region	Area (Million hectares)				Yield (Metric tons per hectare)				Production (Million metric tons)				Change in Production			
	Prel.		2019/20 Proj.		Prel.		2019/20 Proj.		Prel.		2019/20 Proj.		From last month		From last year	
	2017/18	2018/19	Jun	Jul	2017/18	2018/19	Jun	Jul	2017/18	2018/19	Jun	Jul	MMT	Percent	MMT	Percent
World	36.53	36.53	36.07	34.98	2.05	1.99	2.07	2.05	74.91	72.78	74.80	71.78	-3.02	-4.04	-1.01	-1.38
United States	0.81	0.79	0.75	0.81	1.71	2.08	1.99	1.99	1.39	1.64	1.48	1.61	0.13	8.50	-0.04	-2.13
Total Foreign	35.71	35.74	35.32	34.17	2.06	1.99	2.08	2.05	73.51	71.14	73.32	70.17	-3.15	-4.30	-0.97	-1.36
European Union	6.82	7.06	5.80	5.75	3.25	2.84	3.40	3.25	22.17	20.06	19.70	18.70	-1.00	-5.08	-1.36	-6.78
Canada	9.27	9.10	8.80	8.40	2.30	2.32	2.40	2.39	21.33	21.10	21.10	20.10	-1.00	-4.74	-1.00	-4.74
China	6.65	6.47	6.60	6.60	2.00	1.99	1.98	1.98	13.27	12.85	13.10	13.10	0.00	0.00	0.25	1.95
South Asia																
India	6.70	7.20	7.30	7.30	1.06	1.11	1.05	1.05	7.10	8.00	7.70	7.70	0.00	0.00	-0.30	-3.75
Pakistan	0.24	0.23	0.24	0.24	0.96	0.98	0.98	0.98	0.23	0.23	0.24	0.24	0.00	0.00	0.01	4.44
Bangladesh	0.25	0.25	0.25	0.25	0.92	0.92	0.92	0.92	0.23	0.23	0.23	0.23	0.00	0.00	0.00	0.00
Former Soviet Union - 12																
Russia	0.95	1.50	1.45	1.45	1.58	1.33	1.41	1.38	1.50	1.99	2.05	2.00	-0.05	-2.44	0.01	0.55
Ukraine	0.79	1.00	1.30	1.30	2.80	2.85	3.00	3.00	2.22	2.85	3.90	3.90	0.00	0.00	1.05	36.84
Belarus	0.33	0.35	0.30	0.30	1.81	1.31	1.63	1.63	0.60	0.46	0.49	0.49	0.00	0.00	0.03	7.46
Kazakhstan	0.25	0.37	0.28	0.28	1.11	1.08	1.14	1.14	0.28	0.39	0.32	0.32	0.00	0.00	-0.07	-18.78
Australia	3.17	1.89	2.70	2.00	1.23	1.15	1.37	1.30	3.89	2.18	3.70	2.60	-1.10	-29.73	0.42	19.27
South America																
Chile	0.06	0.06	0.06	0.06	3.89	4.20	4.25	4.25	0.22	0.25	0.26	0.26	0.00	0.00	0.01	2.82
Paraguay	0.03	0.04	0.03	0.03	1.00	1.50	1.87	1.87	0.03	0.06	0.06	0.06	0.00	0.00	0.00	-6.67
Switzerland	0.02	0.02	0.02	0.02	3.14	3.14	3.14	3.14	0.07	0.07	0.07	0.07	0.00	0.00	0.00	0.00
Ethiopia	0.03	0.04	0.04	0.04	1.82	1.57	1.86	1.86	0.05	0.06	0.07	0.07	0.00	0.00	0.01	18.18
Others	0.15	0.17	0.16	0.16	2.17	2.14	2.22	2.22	0.33	0.37	0.35	0.35	0.00	0.00	-0.02	-6.20

World and Selected Countries and Regions

Table 16 Copra, Palm Kernel, and Palm Oil Production

Country / Region	Production (Million metric tons)				Change in Production			
	2017/18	Prel.	2019/20 Proj.		From last month		From last year	
		2018/19	Jun	Jul	MMT	Percent	MMT	Percent
Oilseed, Copra								
Philippines	2.60	2.63	2.50	2.50	0.00	0.00	-0.13	-4.94
Indonesia	1.65	1.64	1.60	1.60	0.00	0.00	-0.04	-2.44
India	0.75	0.75	0.75	0.75	0.00	0.00	0.00	0.00
Vietnam	0.28	0.29	0.29	0.29	0.00	0.00	0.00	0.00
Mexico	0.21	0.22	0.22	0.22	0.00	0.00	0.00	0.00
Papua New Guinea	0.10	0.10	0.10	0.10	0.00	0.00	0.00	0.00
Thailand	0.07	0.07	0.07	0.07	0.00	0.00	0.00	0.00
Sri Lanka	0.07	0.07	0.07	0.07	0.00	0.00	0.00	0.00
Solomon Islands	0.03	0.03	0.03	0.03	0.00	0.00	0.00	0.00
Cote d'Ivoire	0.03	0.03	0.03	0.03	0.00	0.00	0.00	0.00
World	5.94	5.98	5.81	5.81	0.00	0.00	-0.17	-2.84
Oilseed, Palm Kernel								
Indonesia	10.50	10.90	11.30	11.30	0.00	0.00	0.40	3.67
Malaysia	4.92	5.20	5.30	5.30	0.00	0.00	0.10	1.92
Thailand	0.82	0.87	0.89	0.89	0.00	0.00	0.02	2.30
Nigeria	0.73	0.73	0.73	0.73	0.00	0.00	0.00	0.00
Colombia	0.33	0.33	0.36	0.36	0.00	0.00	0.03	9.09
Guatemala	0.17	0.17	0.17	0.17	0.00	0.00	0.00	0.00
Papua New Guinea	0.17	0.17	0.17	0.17	0.00	0.00	0.00	0.00
Honduras	0.14	0.14	0.14	0.14	0.00	0.00	0.00	0.00
Brazil	0.13	0.14	0.14	0.14	0.00	0.00	0.00	0.00
Cote d'Ivoire	0.12	0.12	0.12	0.12	0.00	0.00	0.00	0.00
World	18.76	19.50	20.05	20.05	0.00	0.00	0.55	2.82
Oil, Palm								
Indonesia	39.50	41.50	43.00	43.00	0.00	0.00	1.50	3.61
Malaysia	19.68	21.00	20.70	21.20	0.50	2.42	0.20	0.95
Thailand	2.78	2.90	3.00	3.00	0.00	0.00	0.10	3.45
Colombia	1.63	1.63	1.68	1.68	0.00	0.00	0.06	3.70
Nigeria	1.03	1.02	1.02	1.02	0.00	0.00	0.00	0.00
Guatemala	0.85	0.85	0.85	0.85	0.00	0.00	0.00	0.00
Papua New Guinea	0.63	0.63	0.63	0.63	0.00	0.00	0.00	0.00
Ecuador	0.57	0.58	0.63	0.63	0.00	0.00	0.05	8.62
Honduras	0.58	0.58	0.58	0.58	0.00	0.00	0.00	0.00
Brazil	0.50	0.53	0.54	0.54	0.00	0.00	0.02	3.85
World	70.61	74.08	75.51	76.01	0.50	0.66	1.93	2.61

World and Selected Countries and Regions

Table 17 Cotton Area, Yield, and Production

Country / Region	Area (Million hectares)				Yield (Kilograms per hectare)				Production (Million 480 lb. bales)				Change in Production			
	Prel.		2019/20 Proj.		Prel.		2019/20 Proj.		Prel.		2019/20 Proj.		From last month		From last year	
	2017/18	2018/19	Jun	Jul	2017/18	2018/19	Jun	Jul	2017/18	2018/19	Jun	Jul	MBales	Percent	MBales	Percent
World	33.73	33.54	34.45	34.73	799	775	792	789	123.78	119.32	125.32	125.79	0.47	0.38	6.46	5.42
United States	4.49	4.13	5.08	5.06	1,014	968	944	947	20.92	18.37	22.00	22.00	0.00	0.00	3.63	19.78
Total Foreign	29.24	29.41	29.38	29.67	766	747	766	762	102.86	100.96	103.32	103.79	0.47	0.45	2.83	2.80
South Asia																
India	12.60	12.60	12.35	12.60	501	458	502	501	29.00	26.50	28.50	29.00	0.50	1.75	2.50	9.43
Pakistan	2.70	2.40	2.50	2.50	661	699	697	697	8.20	7.70	8.00	8.00	0.00	0.00	0.30	3.90
China	3.40	3.50	3.45	3.45	1,761	1,726	1,751	1,751	27.50	27.75	27.75	27.75	0.00	0.00	0.00	0.00
South America																
Brazil	1.18	1.60	1.55	1.55	1,708	1,747	1,686	1,686	9.22	12.80	12.00	12.00	0.00	0.00	-0.80	-6.25
Argentina	0.32	0.38	0.38	0.38	558	642	602	602	0.82	1.12	1.05	1.05	0.00	0.00	-0.07	-6.25
Paraguay	0.01	0.01	0.01	0.01	416	416	416	416	0.02	0.02	0.02	0.02	0.00	0.00	0.00	0.00
Africa																
Burkina	0.85	0.64	0.73	0.73	307	313	360	360	1.20	0.92	1.20	1.20	0.00	0.00	0.28	30.43
Mali	0.71	0.72	0.74	0.74	432	381	419	419	1.40	1.26	1.43	1.43	0.00	0.00	0.17	13.10
Cote d'Ivoire	0.33	0.39	0.41	0.41	536	486	441	441	0.81	0.88	0.83	0.83	0.00	0.00	-0.05	-5.14
Benin	0.53	0.65	0.68	0.68	468	469	468	468	1.14	1.40	1.45	1.45	0.00	0.00	0.05	3.57
Egypt	0.09	0.14	0.10	0.10	718	772	762	762	0.30	0.50	0.35	0.35	0.00	0.00	-0.15	-30.00
Cameroon	0.23	0.25	0.25	0.25	484	523	492	492	0.50	0.60	0.57	0.57	0.00	0.00	-0.04	-5.83
Tanzania	0.35	0.50	0.50	0.50	143	185	174	174	0.23	0.43	0.40	0.40	0.00	0.00	-0.03	-5.88
Nigeria	0.27	0.27	0.27	0.27	190	190	190	190	0.24	0.24	0.24	0.24	0.00	0.00	0.00	0.00
Zimbabwe	0.20	0.20	0.20	0.20	294	218	207	207	0.27	0.20	0.19	0.19	0.00	0.00	-0.01	-5.00
Ethiopia	0.06	0.08	0.08	0.08	639	687	680	680	0.18	0.24	0.25	0.25	0.00	0.00	0.01	2.88
Former Soviet Union - 12																
Uzbekistan	1.25	1.10	1.01	1.05	672	636	701	674	3.86	3.22	3.25	3.25	0.00	0.00	0.04	1.09
Turkmenistan	0.55	0.55	0.55	0.55	535	364	479	479	1.34	0.91	1.20	1.20	0.00	0.00	0.29	31.87
Tajikistan	0.19	0.18	0.18	0.18	671	544	544	544	0.57	0.45	0.45	0.45	0.00	0.00	0.00	0.00
Kazakhstan	0.13	0.13	0.12	0.12	523	561	642	642	0.30	0.33	0.35	0.35	0.00	0.00	0.02	4.55
Middle East																
Turkey	0.47	0.52	0.54	0.54	1,853	1,549	1,653	1,653	4.00	3.70	4.10	4.10	0.00	0.00	0.40	10.81
Syria	0.03	0.03	0.03	0.03	1,161	1,219	1,219	1,219	0.16	0.14	0.14	0.14	0.00	0.00	0.00	0.00
Iran	0.09	0.08	0.08	0.08	640	748	748	748	0.25	0.28	0.28	0.28	0.00	0.00	0.00	0.00
Australia	0.53	0.30	0.26	0.26	1,972	1,742	1,591	1,591	4.80	2.40	1.90	1.90	0.00	0.00	-0.50	-20.83
Mexico	0.21	0.24	0.24	0.24	1,617	1,546	1,588	1,588	1.56	1.69	1.75	1.75	0.00	0.00	0.06	3.55
Burma	0.25	0.24	0.24	0.24	634	635	635	635	0.73	0.70	0.70	0.70	0.00	0.00	0.00	0.00
Others	1.74	1.73	1.95	1.95	535	580	558	554	4.28	4.60	4.99	4.96	-0.03	-0.60	0.36	7.92

World and Selected Countries and Regions

TABLE 18

The table below presents a record of the July projection and the final Estimate. Using world wheat production as an example, the "root mean square error" means that chances are 2 out of 3 that the current forecast will not be above or below the final estimate by more than 2.8 percent. Chances are 9 out of 10 (90% confidence level) that the difference will not exceed 4.8 percent. The average difference between the July projection and the final estimate is 14.3 million tons, ranging from 1 million to 34.6 million tons. The July projection has been below the estimate 23 times and above 15 times.

RELIABILITY OF PRODUCTION PROJECTIONS 1/

COMMODITY AND REGION	Root mean square error	90 percent confidence interval	Difference between forecast and final estimate				
			Average	Smallest	Largest	Years	
						Below final	Above final
	Percent		---Million metric tons---				
WHEAT							
World	2.8	4.8	14.3	1.0	34.6	23	15
U.S.	3.5	5.9	1.6	0.1	6.2	18	20
Foreign	3.1	5.2	14.0	0.3	34.7	24	14
COARSE GRAINS 2/							
World	2.9	5.0	23.2	1.3	68.4	20	18
U.S.	10.1	17.2	15.7	0.6	57.9	19	19
Foreign	2.6	4.4	14.8	1.1	53.0	20	18
RICE (Milled)							
World	2.4	4.1	7.0	0.4	24.0	24	14
U.S.	5.1	8.6	0.2	0.0	0.7	19	17
Foreign	2.4	4.1	7.0	0.5	24.3	24	14
SOYBEANS							
World	5.1	8.7	7.4	0.5	26.9	18	20
U.S.	7.0	12.0	3.7	0.2	11.7	20	18
Foreign	7.5	12.7	6.7	1.0	25.8	20	18
COTTON			---Million 480-lb. bales---				
World	5.8	9.8	3.9	0.0	14.9	23	15
U.S.	9.8	16.6	1.3	0.1	5.3	21	17
Foreign	5.9	10.0	3.1	0.0	12.1	21	16
UNITED STATES			-----Million bushels-----				
CORN							
CORN	11.1	18.8	567	12	2,190	22	16
SORGHUM							
SORGHUM	18.1	30.7	68	3	213	21	17
BARLEY							
BARLEY	7.8	13.3	21	0	87	13	24
OATS							
OATS	12.7	21.5	20	0	144	6	31

1/ Marketing years 1981/82 through 2018/19. Final for grains, soybeans and cotton is defined as the first November estimates following the marketing year for 1981/82 through 2017/18, and for 2018/19 last month's estimate.

2/ Includes corn, sorghum, barley, oats, rye, millet, and mixed grain

July 2019

Office of Global Analysis, FAS, USDA