



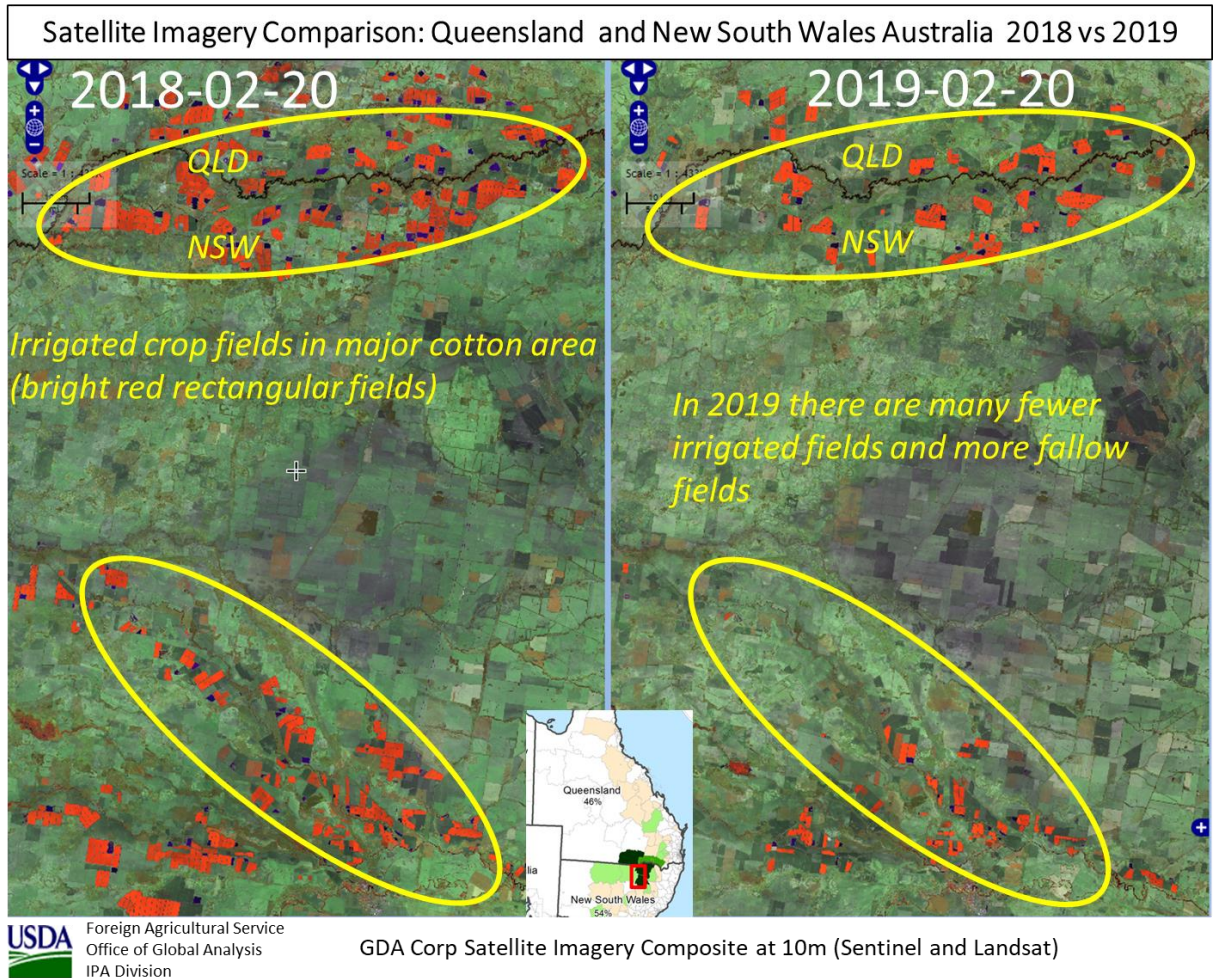
United States
Department of
Agriculture

Foreign
Agricultural
Service

Circular Series
WAP 3-19
March 2019

World Agricultural Production

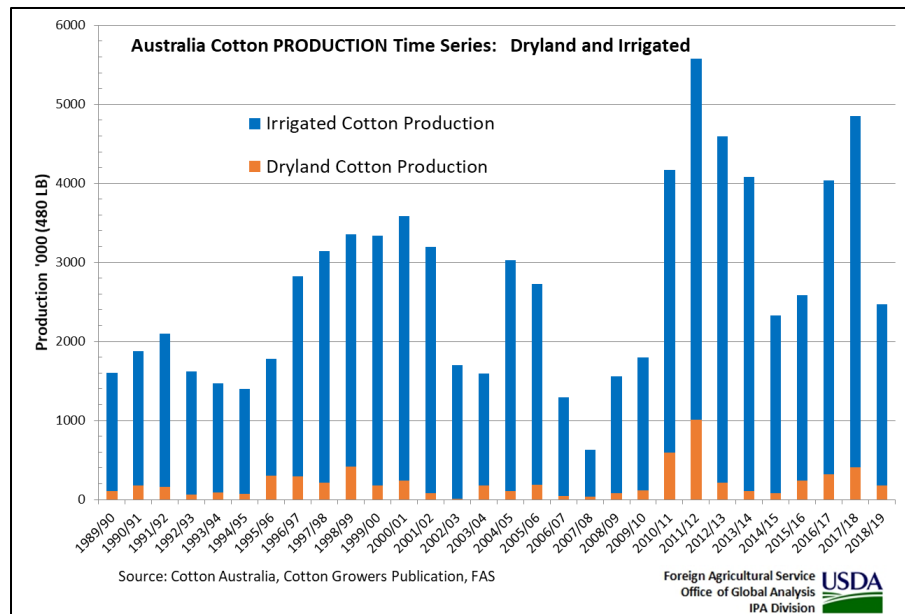
Australia Cotton: Production Estimate Down 48 Percent from Last Year



The 2018/19 Australia cotton crop is estimated at 2.5 million 480-pound bales (0.544 million metric tons), down 0.1 million bales or 4 percent from last month and down 2.3 million bales or 48 percent from last year. Harvested area is estimated at 0.3 million hectares, unchanged from last month, but down 43 percent from last year. Yield is forecast at 1,814 kilograms per hectare, 6 percent below the 5-year average.

Approved by the World Agricultural Outlook Board

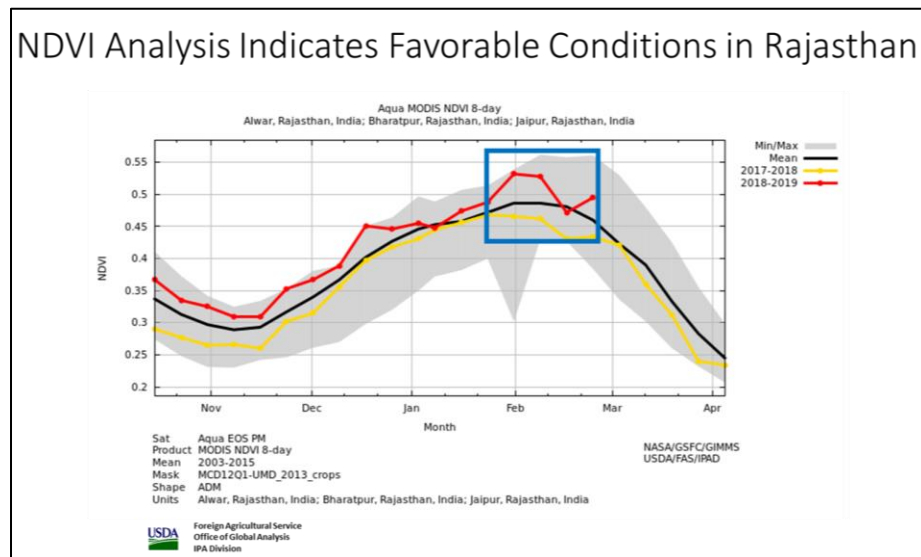
Irrigated cotton yields are substantially higher than dryland yields, and the difference widens in low-rainfall years. On average about 90 percent of Australia's total cotton production comes from irrigated areas. Dryland planting tends to vary with the seasonal weather forecast and prices at sowing. A notable factor this season is the increase in cotton area in southern New South Wales.



Persistent hot and dry conditions during January and February has reduced yield potential for dryland cotton and reduced availability of water for some irrigated fields. Sorghum and cotton are the two dominant summer crops in eastern Australia. Cotton sowing commences in October and harvest begins in March. (*For more information, please contact James.Crutchfield@fas.usda.gov.*)

India Rapeseed: Ideal Weather Boosts Expected Production

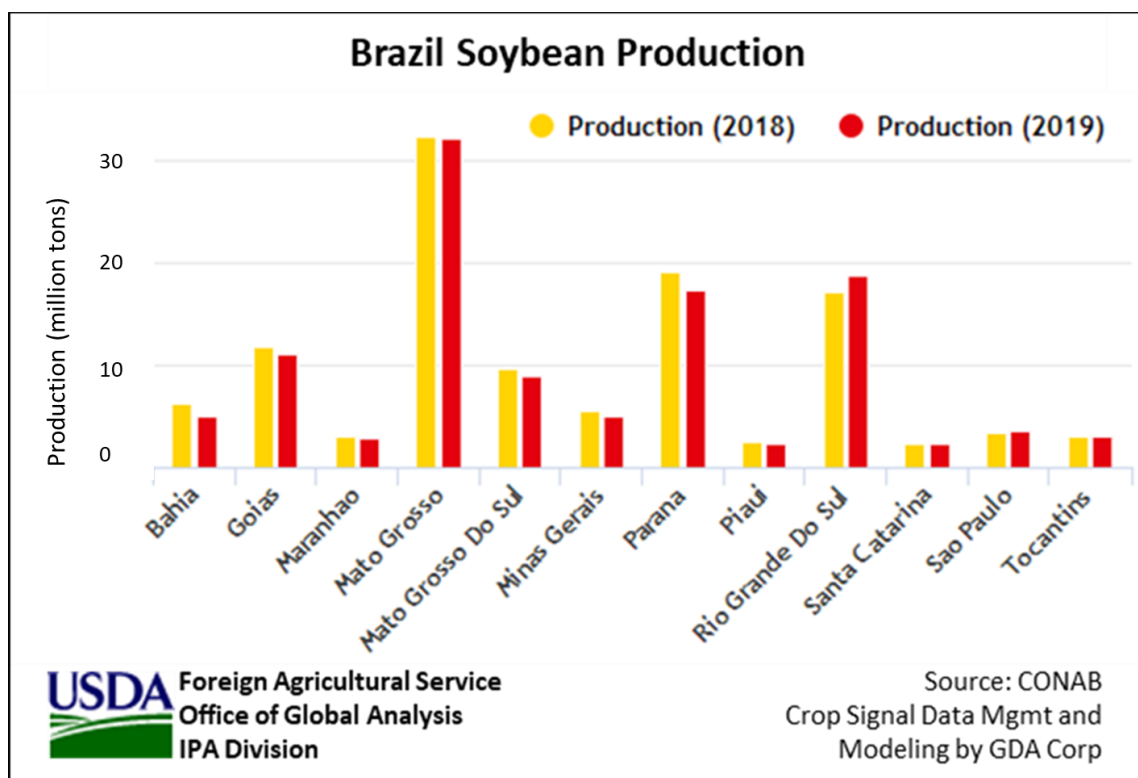
USDA forecasts 2018/19 India rapeseed production at 6.6 million metric tons, up 10 percent from the previous forecast, and up 2 percent from last year. Area is forecast at 6.0 million hectares, unchanged from last month and last year. Yield is forecast at 1.10 metric tons per hectare, up 10 percent from last month and up 2 percent from last year. The 2-percent increase in yield is due to ideal growing weather in northern India.



Rapeseed is grown in the *rabi* season and planting usually begins in late October. The Southwest Monsoon withdrew later than normal this year and the residual soil moisture from the late withdrawal encouraged timely planting by farmers in northwestern and central India. Scattered storms in January aided crop development and another storm in February boosted vegetative growth and pod development. Temperatures so far have been slightly below average which is ideal

for rapeseed development. Satellite-derived NDVI analysis depicts strong crop vigor in both Rajasthan and Uttar Pradesh, which account for approximately 40 percent and 20 percent of total crop production, respectively. There are no reports of pest or disease infestation. Harvest activities will begin in the next few weeks. *(For more information, please contact Arnella.Trent@fas.usda.gov.)*

Brazil Soybeans: Output Further Reduced

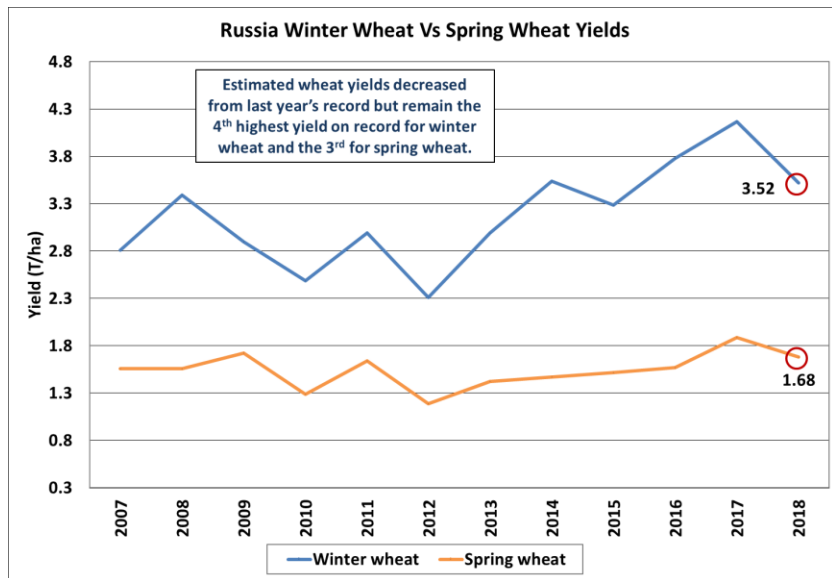


Brazil soybean production for 2018/19 is estimated at 116.5 million metric tons (mmt), down 0.5 mmt from last month and down 4 percent from last year’s record. Harvested area is estimated at 36.1 million hectares, unchanged from last month, but up 3 percent from last year. Yield is estimated at 3.23 metric tons per hectare, down slightly from last month and 6 percent below last year’s record crop. Production estimates for drought-affected states in the Center-West and Southeast regions were revised downward but partially offset by gains in regions of Mato Grosso, unaffected by drought, and in Rio Grande do Sul where the developing crop is benefiting from favorable weather. Nationally more than 45 percent of the crop has been harvested. *(For more information, please contact Maria.Anulacion@fas.usda.gov.)*

Russia Wheat: Third Highest Production on Record

Russia wheat production for 2018/19 is estimated at 71.7 million metric tons (mmt), up slightly from last month and down 13.3 mmt from last year’s record crop. The estimate includes 52.5 mmt of winter wheat and 19.2 mmt of spring wheat (excludes about 0.5 mmt estimated output from Crimea). The month-to-month increase is based on final data released by Rosstat, Russia’s state

statistical agency. Harvested area for total wheat is estimated at 26.3 million hectares (mha) – 14.9 mha winter (a record) and 11.4 mha spring. Winter wheat area has been increasing for the last six years while spring wheat area has been declining for the last three. Total-wheat yield for Russia is estimated at 2.72 tons per hectare, down slightly from last month. This yield is the second highest on record and is the result of favorable conditions during the growing season.

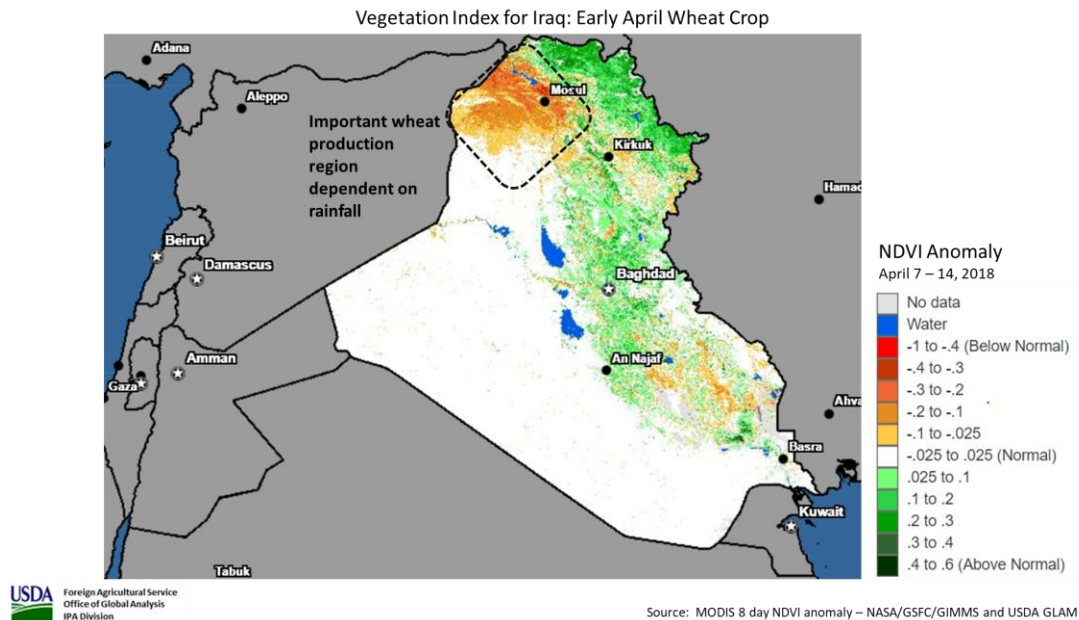


USDA Foreign Agricultural Service Office of Global Analysis IPA Division

Source: USDA PSD Online

Area, yield, and production estimates for Russia winter wheat and spring wheat are available on PSD Online. Select “Downloadable Data Sets” and open the zipped file for “Russia Wheat; Winter/Spring Area & Prod.” (For more information, please contact Katie.McGaughey@fas.usda.gov.)

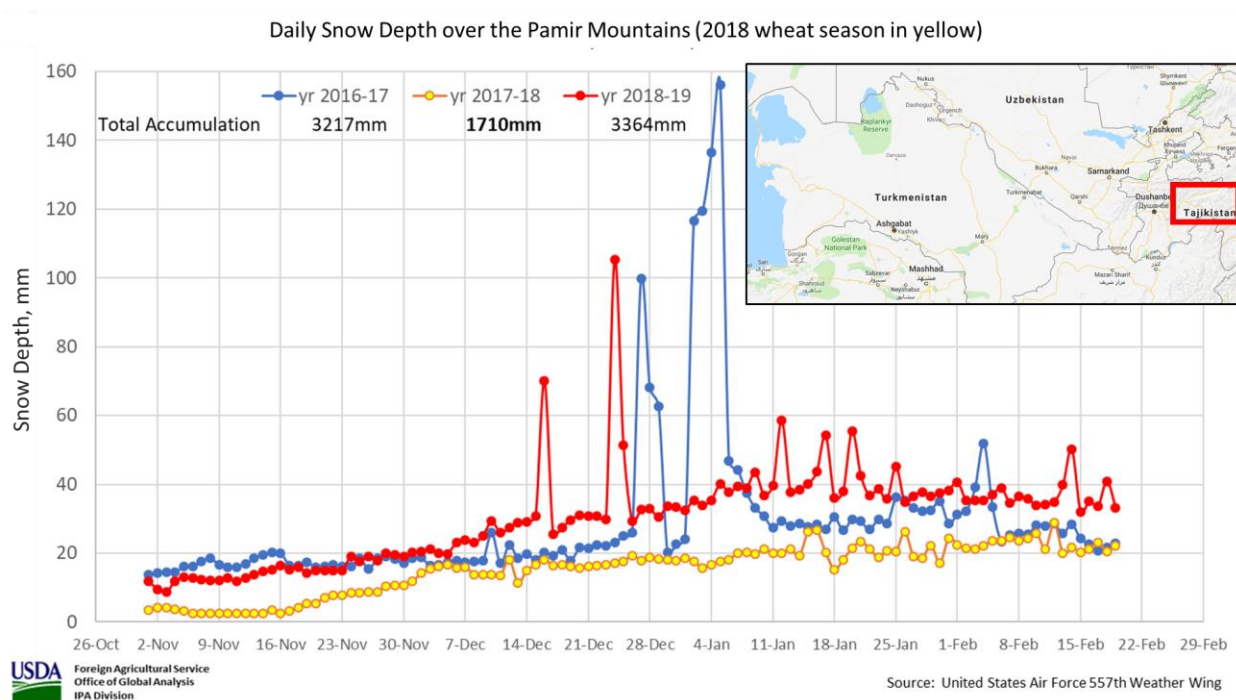
Iraq Wheat: Lower Production Estimate Based on Below Normal Precipitation



USDA estimates 2018/19 Iraq wheat production at 3.0 million metric tons (mmt), down 1.0 mmt from last month, and down 25 percent from last year. Harvested area is estimated at 1.7 million hectares (mha), down 0.6 mha from last month, and down 23 percent from last year. Yield is

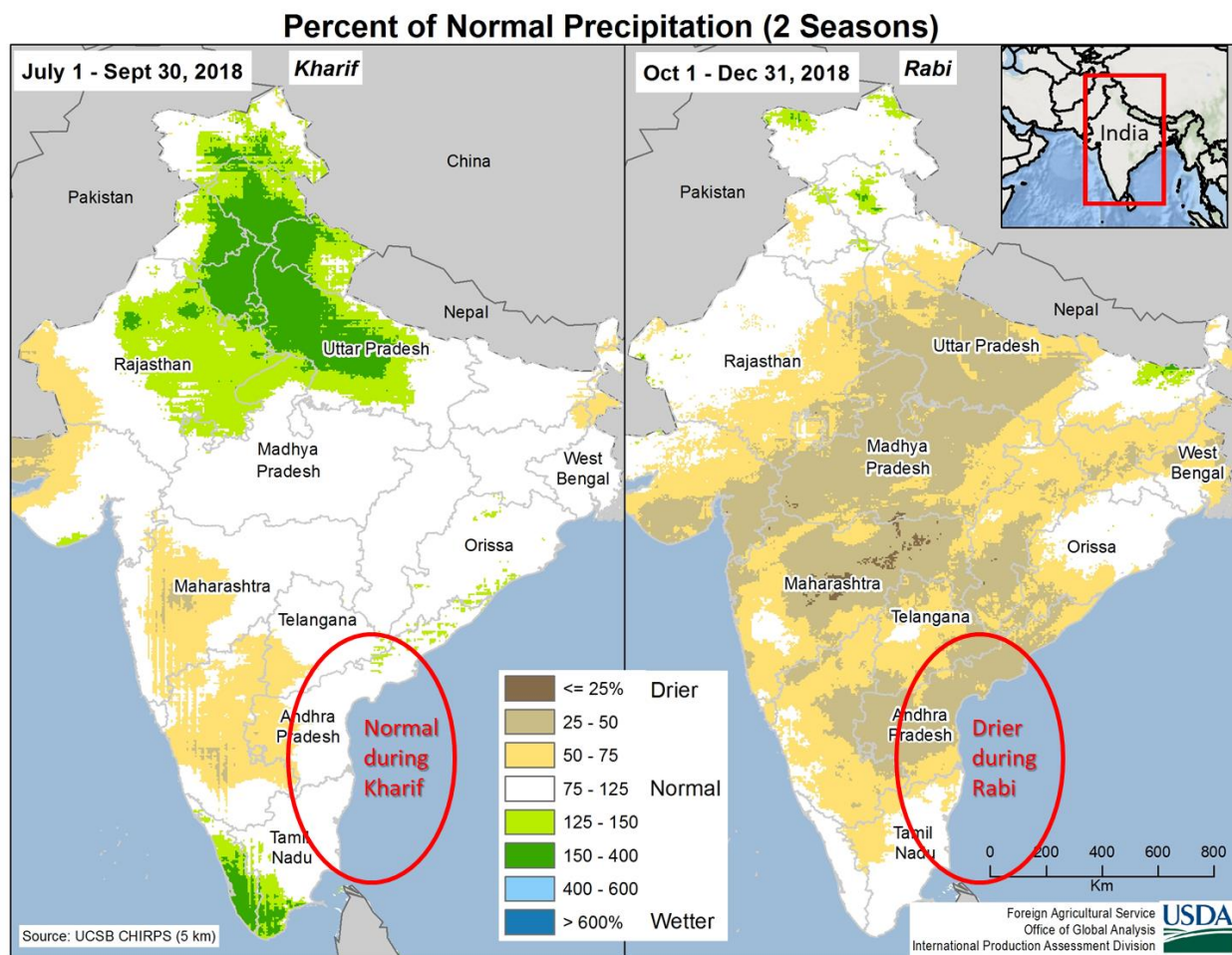
estimated at 1.77 tons per hectare, up 1 percent from last month, but down 3 percent from last year. Recent reports confirm the decrease in production. The province of Nineveh in northern Iraq is a significant contributor to Iraq's wheat production. This region is located just southwest of the city of Mosul and is highly rainfall dependent. Below-normal spring precipitation exacerbated an already difficult situation due to the ongoing conflict in that area. In addition, low flow in the Tigris River, which is the primary water supply for the irrigated crop in this region, was also reported to have reduced crop production. Iraq's 2018/19 wheat harvest began in May and completed in July 2018. (For more information, please contact William.Baker@fas.usda.gov.)

Turkmenistan Wheat: Low River Flow and Poor Weed Control Decrease Production



USDA estimates 2018/19 Turkmenistan wheat production at 0.7 million metric tons (mmt), down 0.2 mmt from last month, and down 30 percent from last year. Harvested area is estimated at 0.8 million hectares (mha), unchanged from last month, and down 1 percent from last year. Yield is estimated at 0.93 tons per hectare, down 22 percent from last month. Recent in-country reports indicate a decrease in production. The northern wheat crop depends on irrigation from the Amu Darya River. Low river flow conditions were observed by satellite imagery in this region during the growing season and substantiated by significantly decreased 2017-2018 snow cover observations in the Pamir Mountains (yellow in the chart). The Pamir Mountains, located in Tajikistan, are the main water source for the Amu Darya River. In addition, poor weed control contributed to lower yield prospects. Harvest of the 2018/19 wheat crop occurred in the summer of 2018. (For more information, please contact William.Baker@fas.usda.gov.)

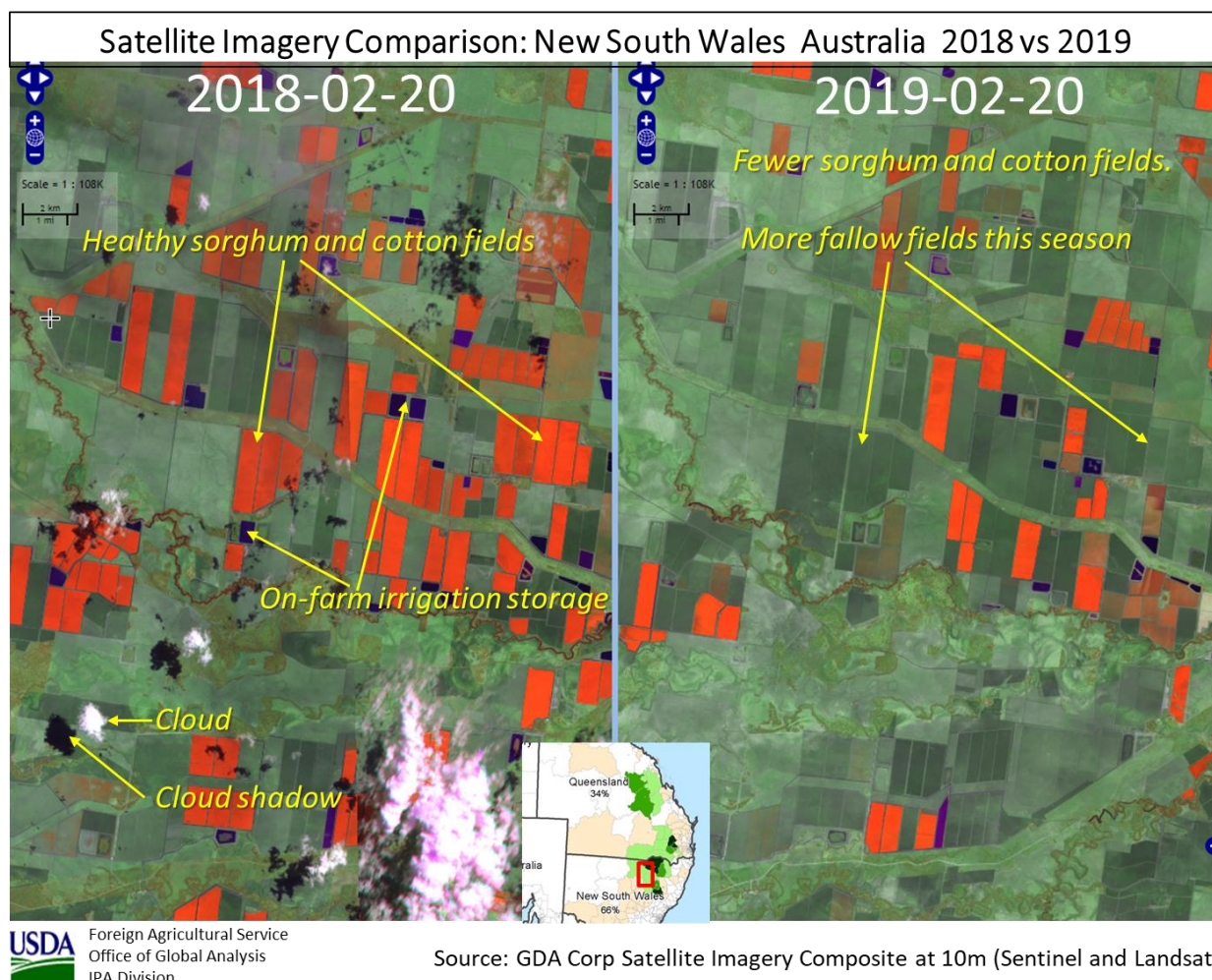
India Rice: Production Revised Up



USDA estimates 2018/19 India rice production at 116.0 million metric tons (milled), up 5 percent from the previous estimate and up 3 percent from last year. Area planted is forecast at 44.5 million hectares, up 1 percent from last month and up 2 percent from last year. Yield is estimated at a record 3.91 metric tons per hectare, up about 1 percent from last year.

Rice is primarily grown during the *kharif* season, which accounts for 85 percent of production, while the *rabi* season accounts for the remainder. Although rice is grown throughout India, the major growing areas are in the east. During the 2018 Southwest Monsoon season, the eastern rice area received normal monsoonal rains, unlike the other half of the country. Satellite-derived MODIS NDVI analysis showed strong crop vigor in the *kharif* season. (For more information, please contact Arnella.Trent@fas.usda.gov)

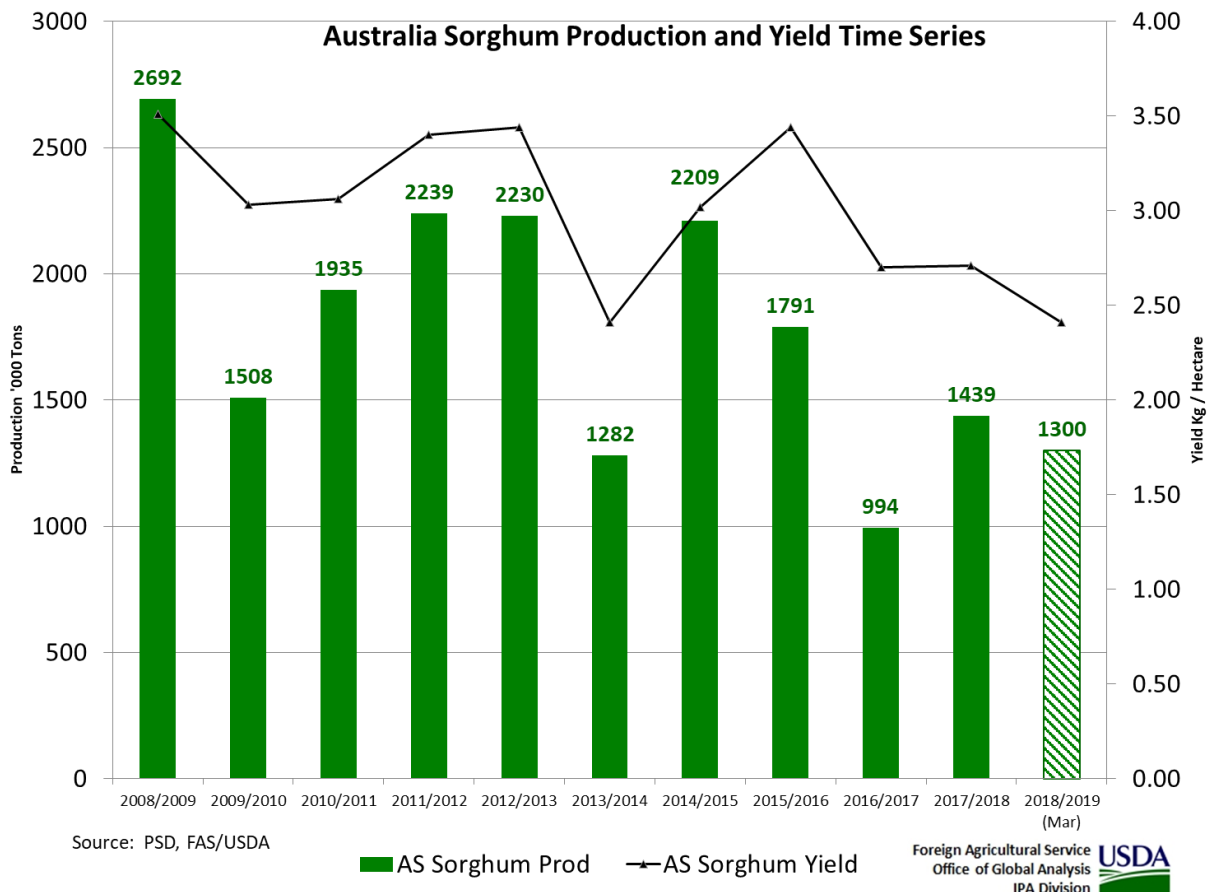
Australia Sorghum: Heat and Dryness Reduce Production Prospects



Australia sorghum production for 2018/19 is estimated at 1.3 million metric tons (mmt), down 0.7 mmt or 35 percent from last month, and down 0.14 mmt or 10 percent from last year. Harvested area is estimated at 0.54 million hectares (mha), down 28 percent from last month, but up 0.09 mha or 2 percent from last year. Yield is forecast at 2.41 tons per hectare, down 10 percent from last month and 16 percent below the five-year average.

January and February's high temperatures further stressed the crop, which was already struggling from a lack of soil moisture. These conditions are expected to lower yield potential. In Queensland, heat and dryness have accelerated crop maturity and harvest began early. Soil moisture levels are well below average in all sorghum regions.

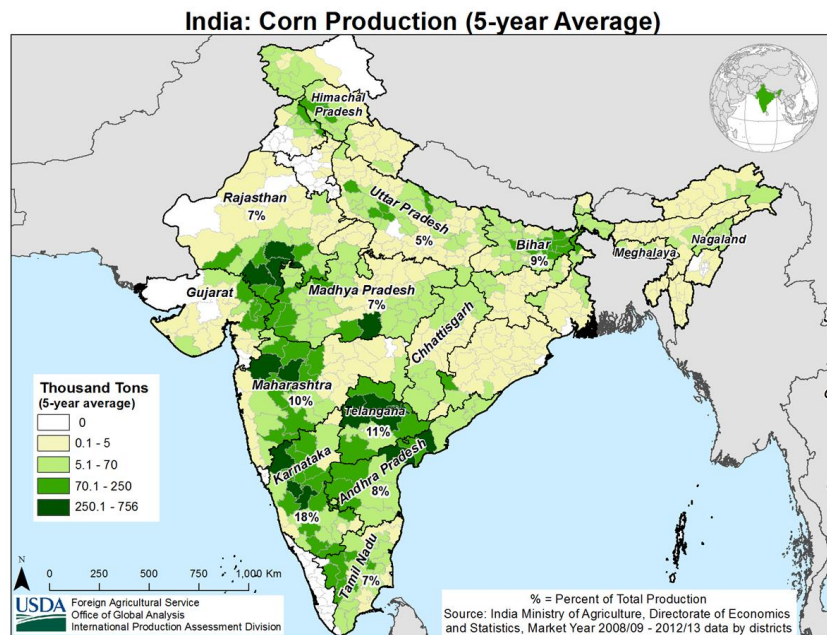
Queensland produces about one-third of Australia's sorghum, with New South Wales accounting for the remainder. Sorghum is sown from September through February. Late-season planting of sorghum is expected to be minimal because of unfavorable seasonal conditions during the past several weeks. Harvest of the early-planted crop began in February and continues through June. (For more information, please contact James.Crutchfield@fas.usda.gov)



India Corn: Production Forecast Revised Up

USDA forecasts 2018/19 India corn production at 27.8 million metric tons, up nearly 7 percent from last month but down 3 percent from last year. Area is forecast at 9.2 million hectares (mha), unchanged from the previous forecast and down slightly from last year. Yield is forecast at 3.02 metric tons per hectare, up nearly 7 percent from last month but down 3 percent from last year.

India corn is grown throughout the country and in both seasons. The *kharif* season, which accounts for roughly 70 percent of total production, is the largest while the *rabi* season accounts for the remainder. In the primary corn areas, rain was more than sufficient. The yield increase is due to



beneficial growing conditions during the *kharif* season, according to the government of India. Additionally, USDA's Agricultural Affairs office reported minimal damage from the fall army worm for the *kharif* crop. (For more information, please contact Arnella.Trent@fas.usda.gov).

South Africa Corn: Drought Reduces Production Forecast

Water-stressed Corn near Bothaville, South Africa (March 6, 2019)

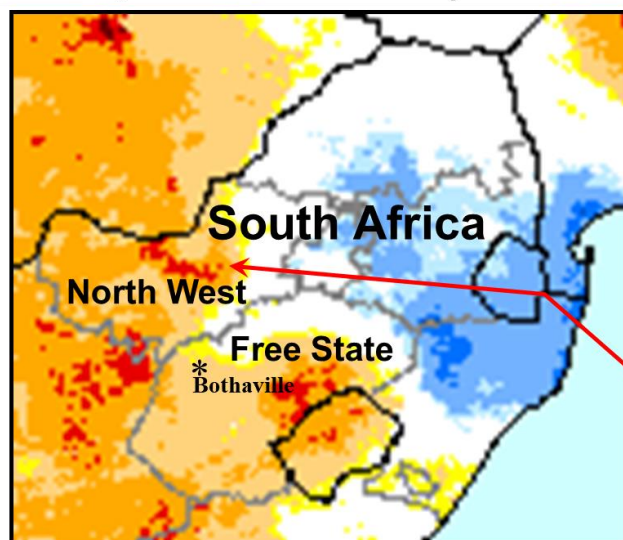


USDA Foreign Agricultural Service
Office of Global Analysis
International Production Assessment Division

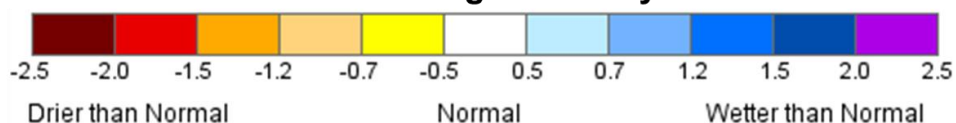
South Africa's 2018/19 corn production is forecast at 11.0 million metric tons (mmt), down 0.5 mmt (4 percent) from last month and down 2.1 mmt (16 percent) from last year. The USDA forecast includes output from both the developing and commercial sectors, with the commercial sector accounting for approximately 95 percent of the total crop. Area is estimated at 2.4 million hectares (mha), unchanged from last month and down 0.23 mha (9 percent) from last year. Yield is forecast at 4.58 metric tons per hectare, down 4 percent from last month, down 8 percent from last year and down 1 percent from the 5-year average.

Seasonal rainfall was below average for most of South Africa's corn belt during the planting season from October through January. Rainfall was delayed by 40 days or more in the western Free State and North West provinces where approximately 60 percent of the corn crop is grown. Most of the western crop was planted in late December and early January, and well beyond the optimal planting date of early December. Rainfall was favorable in early February, but dry conditions returned in late February when the crop entered the critical pollination stage. Timely

Drought Severity Measured by the Standardized Precipitation Index (February 21-28, 2019)



SPI Drought Severity



Foreign Agricultural Service
Office of Global Analysis
International Production Assessment Division

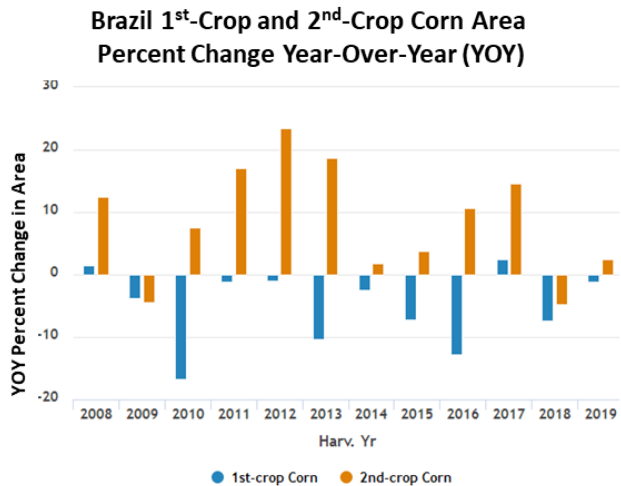
Source: SPI-CHIRPS from UCSB

rainfall is desperately needed during the next several weeks or the late planted crop could fail to fully pollinate from dry soil moisture conditions in early March.

FAS personnel are currently surveying the drought affected west and comparing field observations with satellite imagery analysis. Early field observations confirm that crop area in the west is significantly less than last year, and large swathes of bare soil still dominate the western region's landscape. Crop conditions for the late-planted crop are also very poor and forecast yields in the west are well below average as measured by satellite-derived NDVI. (For more information, contact Curt.Reynolds@fas.usda.gov.)

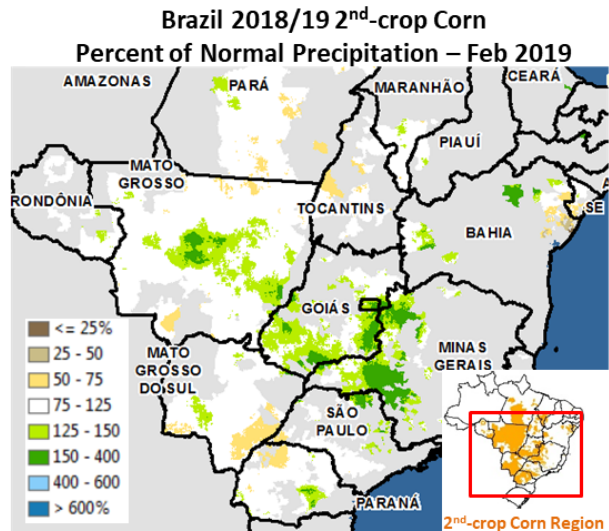
Brazil Corn: Area Down and Yield Up

Corn production for 2018/19 is estimated at 94.5 million metric tons (mmt), unchanged from last month, but up 12.5 mmt or 15 percent from last year. Harvested area is estimated at 17.2 million hectares (mha), down 0.3 mha or 2 percent from last month but up 4 percent from last year. Yield is estimated at 5.49 metric tons per hectare, up 2 percent from last month and up 11 percent from last year's crop which was affected by untimely and extended dryness that lowered yields in southern, second-crop corn production areas. This year's second-crop yield is estimated higher due to rapid earlier-than-average planting and favorable early-season weather.



USDA Foreign Agricultural Service
Office of Global Analysis
IPA Division

Source: CONAB



USDA Foreign Agricultural Service
Office of Global Analysis
IPA Division

Source: CHIRPS/UCSB
<http://chg.geog.ucsb.edu/data/chirps>

Brazil's first-crop corn has been mostly decreasing while second-crop corn has increased over the last 10 years. This month, first-crop corn area was revised down from earlier estimates, while more modest area increases were estimated for principal second-crop producing states. First-crop corn harvest is underway and continues until June. Second-crop corn will be harvested from June through September. (For more information, contact Maria.Anulacion@fas.usda.gov).



**World Agricultural Production
U.S. Department of Agriculture**

Foreign Agricultural Service / Office of Global Analysis
International Production Assessment Division (IPAD)
Ag Box 1051, Room 4630, South Building
Washington, DC 20250-1051

<https://ipad.fas.usda.gov/>

Telephone: (202) 720-1662 Fax: (202) 720-1158

This report uses information from the Foreign Agricultural Service’s (FAS) global network of agricultural attachés and counselors, official statistics of foreign governments and other foreign source materials, and the analysis of economic data and satellite imagery. Estimates of foreign area, yield, and production are from the International Production Assessment Division, FAS, and are reviewed by USDA’s Inter-Agency Commodity Estimates Committee. Estimates of U.S. area, yield, and production are from USDA’s National Agricultural Statistics Service. Numbers within the report may not add to totals because of rounding. This report reflects official USDA estimates released in the World Agricultural Supply and Demand Estimates (WASDE-584), March 8, 2019.

Printed copies are available from the National Technical Information Service. Download an order form at http://www.ntis.gov/products/specialty/usda/fas_a-g.asp, or call NTIS at 1-800-363-2068.

The FAS International Production Assessment Division prepared this report. The next issue of World Agricultural Production will be released after 12:00 p.m. Eastern Time, April 9, 2019.

Conversion Table

Metric tons to bushels

Wheat, soybeans	=	MT * 36.7437
Corn, sorghum, rye	=	MT * 39.36825
Barley	=	MT * 45.929625
Oats	=	MT * 68.894438

Metric tons to 480-lb bales

Cotton	=	MT * 4.592917
--------	---	---------------

Metric tons to hundredweight

Rice	=	MT * 22.04622
------	---	---------------

Area & weight

1 hectare	=	2.471044 acres
1 kilogram	=	2.204622 pounds



For further information, contact:
U.S. Department of Agriculture
Foreign Agricultural Service
Office of Global Analysis
International Production Assessment Division
Ag Box 1051, Room 4630, South Building
Washington, DC 20250-1051

Telephone: (202) 720-1662

Fax: (202) 720-1158

GENERAL INFORMATION

Director	Ronald Frantz	202-720-4056	ronald.frantz@fas.usda.gov
Deputy Director	Robert Tetrault	202-720-1071	robert.tetrault@fas.usda.gov
Administrative Assistant	Vacant		
USDA Remote Sensing Advisor	Glenn Bethel	202-720-1280	glenn.bethel@fas.usda.gov
Sr. Analyst/Technical Lead	Curt Reynolds, Ph.D.	202-690-0134	curt.reynolds@fas.usda.gov
Sr. Analyst/ Satellite Imagery	Dath Mita, Ph.D.	202-720-7339	dath.mita@fas.usda.gov
Archives Manager/Technical Lead			
Sr. Analyst/ Global Special	Jim Crutchfield	202-690-0135	james.crutchfield@fas.usda.gov
Projects Manager/Technical Lead			
Sr. Analyst/Technical Lead	Vacant		
GIS Mapping/Imagery Specialist	Lisa Colson	202-720-6652	lisa.colson@fas.usda.gov
WAP Coordinator	Katie McGaughey	202-720-9210	katie.mcgaughey@fas.usda.gov

COUNTRY- AND REGION-SPECIFIC INFORMATION

South America, Argentina, Venezuela, and Colombia	Denise McWilliams, Ph.D.	202-720-0107	denise.mcwilliams@fas.usda.gov
Western and Central Europe, and North Africa	Bryan Purcell	202-690-0138	bryan.purcell@fas.usda.gov
Russia, Ukraine, Kazakhstan	Vacant		
South Asia, Sri Lanka	Arnella Trent	202-720-0881	arnella.trent@fas.usda.gov
Bangladesh, India, and Nepal			
East Asia, China, and Japan	Dath Mita, Ph.D.	202-720-7339	dath.mita@fas.usda.gov
Sub-Saharan Africa,	Curt Reynolds, Ph.D.	202-690-0134	curt.reynolds@fas.usda.gov
Nigeria and South Africa			
S.E. Asia, Indonesia, Thailand, Malaysia, Cambodia and Vietnam	Justin Jenkins	202-720-0419	justin.jenkins@fas.usda.gov
Central America, Mexico, and Western United States	Vacant		
Australia, New Zealand, Pakistan	Jim Crutchfield	202-690-0135	james.crutchfield@fas.usda.gov
Papua New Guinea and South Pacific Islands			
Middle East, Central Asia, Afghanistan	Bill Baker, Ph.D.	202-260-8109	william.baker@fas.usda.gov
Iraq, Iran, and Syria			
Canada, Caribbean,	Katie McGaughey	202-720-9210	katie.mcgaughey@fas.usda.gov
Eastern United States			
Brazil	Maria Anulacion	202-720-6878	maria.anulacion@fas.usda.gov



The Foreign Agricultural Service (FAS) updates its production, supply and distribution (PSD) database for cotton, oilseeds, and grains at 12:00 p.m. on the day the *World Agricultural Supply and Demand Estimates* (WASDE) report is released. This circular is released by 12:15 p.m.

FAS Reports and Databases:

Current *World Market and Trade and World Agricultural Production* Reports:

<http://apps.fas.usda.gov/psdonline/psdDataPublications.aspx>

Archives *World Market and Trade and World Agricultural Production* Reports:

<http://usda.mannlib.cornell.edu/MannUsda/viewTaxonomy.do?taxonomyID=7>

Production, Supply and Distribution Database (PSD Online):

<http://apps.fas.usda.gov/psdonline/psdHome.aspx>

EU Countries Area & Production Estimates

<http://apps.fas.usda.gov/psdonline/psdDownload.aspx>

Global Agricultural Trade System (U.S. Exports and Imports):

<http://apps.fas.usda.gov/gats/default.aspx>

Export Sales Report:

<http://apps.fas.usda.gov/esrquery/>

Global Agricultural Information Network (Agricultural Attaché Reports):

<http://gain.fas.usda.gov/Pages/Default.aspx>

Other USDA Reports:

World Agricultural Supply and Demand Estimates (WASDE):

<http://www.usda.gov/oce/commodity/wasde/>

Economic Research Service:

<http://www.ers.usda.gov/topics/crops>

National Agricultural Statistics Service:

<http://www.nass.usda.gov/Publications/>

Table 01 World Crop Production Summary

Million Metric Tons

Commodity	World -	Total Foreign	North America			Former Soviet		European	Asia (WAP)					South America		Selected Other			All Others
			United States	Canada -	Mexico -	Russia -	Ukraine -		China -	India -	Indonesia	Pakistan	Thailand	Argentina	Brazil -	Australia	South Africa	Turkey -	
---Million metric tons---																			
Wheat																			
2016/17	756.4	693.6	62.8	32.1	3.9	72.5	26.8	nr	133.3	87.0	0.0	25.6	0.0	18.4	6.7	31.8	1.9	17.3	236.2
2017/18 prel.	763.1	715.7	47.4	30.0	3.5	85.0	27.0	nr	134.3	98.5	0.0	26.7	0.0	18.5	4.3	21.3	1.5	21.0	244.1
2018/19 proj.																			
Feb	734.7	683.5	51.3	31.8	3.0	71.6	25.0	nr	131.4	99.7	0.0	25.5	0.0	19.2	5.4	17.0	1.8	19.0	233.0
Mar	733.0	681.7	51.3	31.8	3.0	71.7	25.0	nr	131.4	99.7	0.0	25.5	0.0	19.5	5.4	17.3	1.8	19.0	230.6
Coarse Grains																			
2016/17	1,414.6	1,012.0	402.6	26.6	33.3	40.8	39.2	nr	270.9	43.5	10.9	6.6	5.3	48.6	101.6	17.3	18.1	10.8	338.6
2017/18 prel.	1,357.0	972.6	384.4	26.2	33.1	41.7	34.1	nr	266.6	47.0	11.4	6.2	5.1	39.3	85.1	11.9	13.6	12.3	339.2
2018/19 proj.																			
Feb	1,372.1	992.2	379.9	26.2	31.3	34.7	44.0	nr	265.1	42.3	11.9	6.8	5.4	53.9	97.4	10.6	12.1	13.7	336.9
Mar	1,371.9	992.0	379.9	26.2	31.3	35.0	44.0	nr	265.1	42.7	11.9	6.8	5.4	53.9	97.4	10.9	11.7	13.7	336.0
Rice, Milled																			
2016/17	490.9	483.8	7.1	0.0	0.2	0.7	0.0	nr	147.8	109.7	36.9	6.8	19.2	0.9	8.4	0.6	0.0	0.5	152.2
2017/18 prel.	495.4	489.7	5.7	0.0	0.2	0.6	0.0	nr	148.9	112.9	37.0	7.5	20.4	0.9	8.2	0.5	0.0	0.5	152.2
2018/19 proj.																			
Feb	495.9	488.7	7.1	0.0	0.2	0.7	0.0	nr	148.5	111.0	37.3	7.4	20.7	0.8	7.8	0.1	0.0	0.5	153.8
Mar	501.6	494.4	7.1	0.0	0.2	0.7	0.0	nr	148.5	116.0	37.3	7.5	20.7	0.8	7.5	0.1	0.0	0.6	154.6
Total Grains																			
2016/17	2,661.9	2,189.4	472.6	58.8	37.3	114.0	66.1	nr	552.0	240.2	47.8	39.1	24.5	67.8	116.7	49.7	20.0	28.5	727.1
2017/18 prel.	2,615.4	2,178.0	437.4	56.2	36.7	127.3	61.1	nr	549.8	258.4	48.4	40.3	25.4	58.7	97.5	33.7	15.1	33.8	735.5
2018/19 proj.																			
Feb	2,602.7	2,164.4	438.3	58.0	34.5	106.9	69.0	nr	545.1	253.0	49.2	39.7	26.1	73.9	110.6	27.8	13.9	33.2	723.6
Mar	2,606.5	2,168.1	438.3	58.0	34.5	107.4	69.0	nr	545.1	258.4	49.2	39.8	26.1	74.2	110.3	28.3	13.5	33.3	721.1
Oilseeds																			
2016/17	572.9	445.9	126.9	26.2	1.1	15.0	20.7	nr	54.9	37.1	12.8	3.7	0.9	60.2	117.6	5.7	2.3	2.8	85.0
2017/18 prel.	576.2	444.7	131.5	29.1	1.3	15.5	19.8	nr	59.5	34.8	13.6	4.0	1.0	42.5	124.6	5.2	2.5	3.2	88.3
2018/19 proj.																			
Feb	593.3	459.3	134.0	28.5	1.3	18.5	22.3	nr	59.8	34.3	13.9	3.6	1.0	60.0	121.5	3.2	2.0	3.4	86.2
Mar	593.0	459.0	134.0	28.5	1.3	18.7	22.3	nr	59.8	34.8	13.9	3.7	1.0	60.0	121.2	3.0	1.9	3.4	85.6
Cotton																			
2016/17	106.7	89.5	17.2	0.0	0.8	0.0	0.0	1.3	22.8	27.0	0.0	7.7	0.0	0.8	7.0	4.1	0.1	3.2	14.9
2017/18 prel.	123.8	102.9	20.9	0.0	1.6	0.0	0.0	1.5	27.5	29.0	0.0	8.2	0.0	0.8	9.2	4.8	0.2	4.0	16.0
2018/19 proj.																			
Feb	118.5	100.1	18.4	0.0	1.7	0.0	0.0	1.7	27.5	27.0	0.0	7.5	0.0	1.2	11.4	2.6	0.2	3.7	15.6
Mar	118.9	100.5	18.4	0.0	1.7	0.0	0.0	1.7	27.5	27.0	0.0	7.7	0.0	1.2	11.8	2.5	0.2	3.7	15.6

1/ Includes wheat, coarse grains, and rice (milled) shown above.

Table 02 Wheat Area, Yield, and Production

Country / Region	Area (Million hectares)				Yield (Metric tons per hectare)				Production (Million metric tons)				Change in Production			
	2016/17	Prel.	2018/19 Proj.		2016/17	Prel.	2018/19 Proj.		2016/17	Prel.	2018/19 Proj.		From last month		From last year	
		2017/18	Feb	Mar		2017/18	Feb	Mar		2017/18	Feb	Mar	MMT	Percent	MMT	Percent
World	222.69	220.00	216.78	216.58	3.40	3.47	3.39	3.38	756.41	763.07	734.75	733.00	-1.74	-0.24	-30.07	-3.94
United States	17.75	15.20	16.03	16.03	3.54	3.12	3.20	3.20	62.83	47.38	51.29	51.29	0.00	0.00	3.91	8.25
Total Foreign	204.94	204.80	200.76	200.55	3.38	3.49	3.40	3.40	693.58	715.69	683.46	681.72	-1.74	-0.25	-33.97	-4.75
European Union - 28	27.23	26.08	25.55	25.55	5.34	5.80	5.39	5.39	145.37	151.26	137.60	137.60	0.00	0.00	-13.66	-9.03
China	24.69	24.51	24.27	24.27	5.40	5.48	5.42	5.42	133.27	134.33	131.43	131.43	0.00	0.00	-2.90	-2.16
South Asia																
India	30.22	30.79	30.00	30.00	2.88	3.20	3.32	3.32	87.00	98.51	99.70	99.70	0.00	0.00	1.19	1.21
Pakistan	9.22	8.97	8.75	8.75	2.78	2.97	2.91	2.91	25.63	26.67	25.50	25.50	0.00	0.00	-1.17	-4.40
Afghanistan	2.55	2.55	2.50	2.50	2.00	1.96	1.60	1.60	5.10	5.00	4.00	4.00	0.00	0.00	-1.00	-20.00
Nepal	0.76	0.77	0.76	0.76	2.41	2.31	2.35	2.35	1.83	1.78	1.79	1.79	0.00	0.00	0.01	0.34
Former Soviet Union - 12																
Russia	27.00	27.34	26.20	26.34	2.69	3.11	2.73	2.72	72.53	84.99	71.60	71.69	0.09	0.12	-13.31	-15.66
Russia Winter	13.64	14.64	14.35	14.91	3.78	4.17	3.55	3.52	51.54	60.99	51.00	52.47	1.47	2.88	-8.52	-13.97
Russia Spring	13.37	12.70	11.85	11.44	1.57	1.89	1.74	1.68	20.99	24.01	20.60	19.22	-1.39	-6.72	-4.79	-19.95
Ukraine	6.46	6.64	6.90	6.90	4.15	4.06	3.62	3.62	26.79	26.98	25.00	25.00	0.00	0.00	-1.98	-7.34
Kazakhstan	12.37	11.91	11.30	11.35	1.21	1.24	1.33	1.23	14.99	14.80	15.00	13.95	-1.05	-7.02	-0.86	-5.78
Uzbekistan	1.40	1.40	1.40	1.40	4.96	4.93	4.29	4.29	6.94	6.90	6.00	6.00	0.00	0.00	-0.90	-13.04
Belarus	0.71	0.72	0.70	0.70	3.29	3.65	3.71	3.71	2.34	2.62	2.60	2.60	0.00	0.00	-0.02	-0.76
Canada	8.98	8.98	9.90	9.90	3.58	3.34	3.21	3.21	32.14	29.98	31.80	31.80	0.00	0.00	1.82	6.06
South America																
Argentina	5.56	5.80	6.10	6.20	3.31	3.19	3.15	3.15	18.40	18.50	19.20	19.50	0.30	1.56	1.00	5.41
Brazil	2.12	1.92	2.04	2.04	3.17	2.23	2.66	2.66	6.73	4.26	5.43	5.43	0.00	0.00	1.16	27.30
Uruguay	0.22	0.19	0.20	0.20	3.52	2.28	3.50	3.50	0.76	0.44	0.70	0.70	0.00	0.00	0.26	59.09
Australia	12.19	12.25	10.00	10.20	2.61	1.74	1.70	1.70	31.82	21.30	17.00	17.30	0.30	1.76	-4.00	-18.78
Africa																
Egypt	1.26	1.32	1.32	1.32	6.43	6.40	6.40	6.40	8.10	8.45	8.45	8.45	0.00	0.00	0.00	0.00
Morocco	2.41	3.32	2.85	2.85	1.13	2.14	2.58	2.58	2.73	7.09	7.34	7.34	0.00	0.00	0.25	3.50
Ethiopia	1.70	1.70	1.70	1.70	2.68	2.65	2.65	2.65	4.54	4.50	4.50	4.50	0.00	0.00	0.00	0.00
Algeria	1.30	1.60	2.07	2.07	1.54	1.50	1.90	1.90	2.00	2.40	3.94	3.94	0.00	0.00	1.54	64.17
Middle East																
Turkey	7.82	7.80	7.62	7.62	2.21	2.69	2.50	2.50	17.25	21.00	19.00	19.00	0.00	0.00	-2.00	-9.52
Iran	6.70	6.70	6.70	6.70	2.16	2.09	2.16	2.16	14.50	14.00	14.50	14.50	0.00	0.00	0.50	3.57
Iraq	2.35	2.20	2.30	1.70	1.80	1.82	1.74	1.76	4.23	4.00	4.00	3.00	-1.00	-25.00	-1.00	-25.00
Syria	1.10	1.10	1.10	1.10	2.18	2.00	1.82	1.82	2.40	2.20	2.00	2.00	0.00	0.00	-0.20	-9.09
Mexico	0.72	0.67	0.54	0.54	5.34	5.24	5.56	5.56	3.87	3.49	3.00	3.00	0.00	0.00	-0.49	-14.14
Serbia	0.61	0.54	0.68	0.68	4.92	4.26	4.74	4.74	3.00	2.30	3.20	3.20	0.00	0.00	0.90	39.13
Others	7.28	7.03	7.32	7.22	2.66	2.55	2.62	2.61	19.33	17.91	19.18	18.81	-0.37	-1.94	0.90	5.04

Table 03 Total Coarse Grain Area, Yield, and Production

Country / Region	Area (Million hectares)				Yield (Metric tons per hectare)				Production (Million metric tons)				Change in Production			
	2016/17	Prel.	2018/19 Proj.		2016/17	Prel.	2018/19 Proj.		2016/17	Prel.	2018/19 Proj.		From last month		From last year	
		2017/18	Feb	Mar		2017/18	Feb	Mar		2017/18	Feb	Mar	MMT	Percent	MMT	Percent
World	337.33	326.37	326.06	325.34	4.19	4.16	4.21	4.22	1,414.60	1,356.96	1,372.14	1,371.89	-0.24	-0.02	14.94	1.10
United States	39.20	36.76	36.39	36.39	10.27	10.46	10.44	10.44	402.61	384.39	379.92	379.92	0.00	0.00	-4.47	-1.16
Total Foreign	298.13	289.60	289.67	288.96	3.39	3.36	3.43	3.43	1,011.99	972.57	992.22	991.97	-0.24	-0.02	19.40	1.99
China	46.29	44.58	44.38	44.38	5.85	5.98	5.97	5.97	270.93	266.57	265.14	265.14	0.00	0.00	-1.44	-0.54
European Union	29.49	29.13	29.14	29.12	5.18	5.24	5.04	5.05	152.83	152.49	146.90	146.96	0.06	0.04	-5.54	-3.63
South America																
Brazil	18.62	17.83	18.68	18.38	5.46	4.77	5.22	5.30	101.58	85.06	97.42	97.42	0.00	0.00	12.36	14.54
Argentina	6.84	7.10	7.67	7.67	7.11	5.54	7.03	7.03	48.57	39.32	53.92	53.92	0.00	0.00	14.60	37.14
Former Soviet Union - 12																
Russia	15.14	14.74	13.91	14.03	2.69	2.83	2.49	2.50	40.77	41.71	34.67	35.00	0.33	0.96	-6.71	-16.10
Ukraine	7.82	7.59	7.49	7.49	5.01	4.49	5.88	5.88	39.22	34.07	43.99	43.99	0.00	0.00	9.92	29.12
Kazakhstan	2.33	2.49	2.96	2.97	1.90	1.79	1.84	1.76	4.43	4.45	5.46	5.23	-0.22	-4.09	0.78	17.52
Belarus	0.96	1.00	1.05	1.05	3.16	3.30	3.34	3.34	3.03	3.29	3.51	3.51	0.00	0.00	0.22	6.69
Africa																
Nigeria	14.10	13.80	13.80	13.80	1.34	1.36	1.40	1.40	18.82	18.80	19.30	19.30	0.00	0.00	0.50	2.66
South Africa	3.18	2.80	2.62	2.62	5.69	4.84	4.62	4.45	18.12	13.58	12.08	11.65	-0.43	-3.56	-1.93	-14.22
Tanzania	5.31	5.35	5.35	5.35	1.11	1.21	1.22	1.22	5.90	6.50	6.55	6.55	0.00	0.00	0.05	0.77
Burkina	3.83	3.85	3.85	3.85	1.09	0.97	1.14	1.14	4.17	3.73	4.40	4.40	0.00	0.00	0.67	18.06
Ethiopia	5.43	5.69	5.71	5.71	2.78	2.45	2.48	2.48	15.09	13.96	14.18	14.18	0.00	0.00	0.22	1.58
Egypt	0.97	1.02	1.07	1.07	7.05	7.09	7.14	7.14	6.86	7.26	7.66	7.66	0.00	0.00	0.40	5.51
Mali	4.63	3.95	3.95	3.95	1.30	1.71	1.34	1.34	6.01	6.76	5.30	5.30	0.00	0.00	-1.46	-21.54
India	25.18	23.81	23.15	23.15	1.73	1.97	1.83	1.85	43.47	46.97	42.25	42.72	0.47	1.11	-4.25	-9.05
Southeast Asia																
Indonesia	3.40	3.45	3.50	3.50	3.21	3.30	3.40	3.40	10.90	11.40	11.90	11.90	0.00	0.00	0.50	4.39
Philippines	2.69	2.60	2.60	2.60	3.01	3.08	3.15	3.15	8.09	7.98	8.20	8.20	0.00	0.00	0.22	2.76
Vietnam	1.10	1.05	0.85	0.85	4.60	4.65	4.65	4.65	5.06	4.88	3.95	3.95	0.00	0.00	-0.93	-19.06
Thailand	1.20	1.15	1.23	1.23	4.39	4.39	4.36	4.36	5.25	5.05	5.35	5.35	0.00	0.00	0.30	5.94
Mexico	9.34	9.07	8.86	8.86	3.56	3.65	3.53	3.53	33.26	33.07	31.29	31.29	0.00	0.00	-1.78	-5.39
Canada	4.82	4.74	5.00	5.00	5.52	5.54	5.25	5.25	26.62	26.24	26.24	26.24	0.00	0.00	0.00	-0.01
Australia	6.38	5.31	5.32	5.30	2.71	2.24	2.00	2.05	17.27	11.91	10.65	10.90	0.25	2.35	-1.01	-8.50
Middle East																
Turkey	4.19	4.15	4.34	4.34	2.57	2.96	3.14	3.14	10.78	12.27	13.65	13.65	0.00	0.00	1.38	11.25
Iran	1.75	1.79	1.79	1.74	2.24	2.41	2.41	2.31	3.92	4.32	4.32	4.02	-0.30	-6.94	-0.30	-6.94
Others	73.15	71.57	71.41	70.96	1.52	1.55	1.60	1.60	111.07	110.93	113.94	113.54	-0.40	-0.35	2.62	2.36

World and Selected Countries and Regions; Coarse Grain includes: Barley, Corn, Millet, Mixed Grains, Oats, Rye and Sorghum

Table 04 Corn Area, Yield, and Production

Country / Region	Area (Million hectares)				Yield (Metric tons per hectare)				Production (Million metric tons)				Change in Production						
	2016/17	Prel.		2018/19 Proj.		2016/17	Prel.		2018/19 Proj.		2016/17	Prel.		2018/19 Proj.		From last month		From last year	
		2017/18	Feb	Mar	2017/18		Feb	Mar	2017/18	Feb		Mar	MMT	Percent	MMT	Percent			
World	194.48	190.75	189.31	189.07	5.78	5.64	5.81	5.82	1,123.30	1,076.23	1,099.61	1,101.16	1.55	0.14	24.93	2.32			
United States	35.11	33.48	33.08	33.08	10.96	11.08	11.07	11.07	384.78	371.10	366.29	366.29	0.00	0.00	-4.81	-1.30			
Total Foreign	159.38	157.27	156.23	155.99	4.63	4.48	4.69	4.71	738.53	705.14	733.32	734.87	1.55	0.21	29.74	4.22			
China	44.18	42.40	42.13	42.13	5.97	6.11	6.11	6.11	263.61	259.07	257.33	257.33	0.00	0.00	-1.74	-0.67			
South America																			
Brazil	17.60	16.60	17.50	17.20	5.60	4.94	5.40	5.49	98.50	82.00	94.50	94.50	0.00	0.00	12.50	15.24			
Argentina	4.90	5.20	5.50	5.50	8.37	6.15	8.36	8.36	41.00	32.00	46.00	46.00	0.00	0.00	14.00	43.75			
Bolivia	0.09	0.37	0.33	0.33	1.38	2.50	2.65	2.65	0.12	0.93	0.88	0.88	0.00	0.00	-0.05	-5.41			
European Union	8.57	8.38	8.05	8.07	7.23	7.41	7.54	7.55	61.88	62.10	60.72	60.88	0.16	0.26	-1.23	-1.98			
Africa																			
South Africa	3.00	2.63	2.40	2.40	5.86	4.97	4.79	4.58	17.55	13.10	11.50	11.00	-0.50	-4.35	-2.10	-16.06			
Nigeria	6.54	6.50	6.50	6.50	1.59	1.69	1.69	1.69	10.42	11.00	11.00	11.00	0.00	0.00	0.00	0.00			
Ethiopia	2.14	2.23	2.25	2.25	3.42	3.14	3.16	3.16	7.30	7.00	7.10	7.10	0.00	0.00	0.10	1.43			
Egypt	0.75	0.80	0.85	0.85	8.00	8.00	8.00	8.00	6.00	6.40	6.80	6.80	0.00	0.00	0.40	6.25			
Tanzania	4.20	4.20	4.20	4.20	1.15	1.27	1.29	1.29	4.82	5.35	5.40	5.40	0.00	0.00	0.05	0.93			
Malawi	1.67	1.70	1.70	1.70	1.42	2.04	1.65	1.65	2.37	3.46	2.80	2.80	0.00	0.00	-0.66	-19.17			
Zambia	1.16	1.43	1.09	1.09	2.48	2.52	2.21	2.21	2.87	3.61	2.40	2.40	0.00	0.00	-1.21	-33.60			
Kenya	2.34	2.10	2.20	2.20	1.43	1.40	1.82	1.82	3.34	2.95	4.00	4.00	0.00	0.00	1.05	35.59			
Uganda	1.15	1.10	1.10	1.10	2.32	2.55	2.27	2.27	2.66	2.80	2.50	2.50	0.00	0.00	-0.30	-10.71			
Zimbabwe	0.77	1.88	1.72	1.72	0.66	1.15	0.99	0.99	0.51	2.16	1.70	1.70	0.00	0.00	-0.46	-21.10			
Former Soviet Union - 12																			
Ukraine	4.24	4.43	4.55	4.55	6.60	5.44	7.80	7.80	27.97	24.12	35.50	35.50	0.00	0.00	11.39	47.21			
Russia	2.78	2.70	2.35	2.37	5.51	4.90	4.79	4.81	15.31	13.23	11.25	11.42	0.17	1.47	-1.81	-13.71			
South Asia																			
India	9.63	9.22	9.20	9.20	2.69	3.12	2.83	3.02	25.90	28.72	26.00	27.80	1.80	6.92	-0.92	-3.20			
Pakistan	1.35	1.23	1.32	1.32	4.55	4.63	4.77	4.77	6.13	5.70	6.30	6.30	0.00	0.00	0.60	10.51			
Nepal	0.89	0.90	0.90	0.90	2.62	2.84	2.83	2.83	2.34	2.56	2.55	2.55	0.00	0.00	-0.01	-0.20			
Southeast Asia																			
Indonesia	3.40	3.45	3.50	3.50	3.21	3.30	3.40	3.40	10.90	11.40	11.90	11.90	0.00	0.00	0.50	4.39			
Philippines	2.69	2.60	2.60	2.60	3.01	3.08	3.15	3.15	8.09	7.98	8.20	8.20	0.00	0.00	0.22	2.76			
Vietnam	1.10	1.05	0.85	0.85	4.60	4.65	4.65	4.65	5.06	4.88	3.95	3.95	0.00	0.00	-0.93	-19.06			
Thailand	1.17	1.12	1.20	1.20	4.45	4.45	4.42	4.42	5.20	5.00	5.30	5.30	0.00	0.00	0.30	6.00			
Mexico	7.51	7.32	7.10	7.10	3.67	3.75	3.61	3.61	27.58	27.45	25.60	25.60	0.00	0.00	-1.85	-6.74			
Canada	1.41	1.41	1.43	1.43	9.82	10.02	9.72	9.72	13.89	14.10	13.90	13.90	0.00	0.00	-0.20	-1.38			
Turkey	0.57	0.53	0.53	0.53	9.65	10.00	10.75	10.75	5.50	5.30	5.70	5.70	0.00	0.00	0.40	7.55			
Others	23.60	23.79	23.18	23.20	2.62	2.56	2.70	2.69	61.72	60.78	62.55	62.48	-0.07	-0.11	1.70	2.80			

World and Selected Countries and Regions

Table 05 Barley Area, Yield, and Production

Country / Region	Area (Million hectares)				Yield (Metric tons per hectare)				Production (Million metric tons)				Change in Production			
	2016/17	Prel.	2018/19 Proj.		2016/17	Prel.	2018/19 Proj.		2016/17	Prel.	2018/19 Proj.		From last month		From last year	
		2017/18	Feb	Mar		2017/18	Feb	Mar		2017/18	Feb	Mar	MMT	Percent	MMT	Percent
World	49.28	47.81	49.51	49.23	2.98	3.01	2.84	2.86	147.06	143.68	140.60	140.71	0.11	0.08	-2.97	-2.07
United States	1.04	0.79	0.80	0.80	4.19	3.93	4.17	4.17	4.35	3.12	3.33	3.33	0.00	0.00	0.21	6.86
Total Foreign	48.24	47.01	48.71	48.43	2.96	2.99	2.82	2.84	142.70	140.56	137.27	137.38	0.11	0.08	-3.18	-2.26
European Union	12.31	12.09	12.45	12.41	4.86	4.87	4.53	4.53	59.87	58.84	56.34	56.24	-0.10	-0.18	-2.60	-4.41
Former Soviet Union - 12																
Russia	7.96	7.85	7.70	7.78	2.21	2.57	2.16	2.15	17.55	20.18	16.60	16.74	0.14	0.83	-3.45	-17.07
Ukraine	3.05	2.65	2.50	2.50	3.24	3.28	2.96	2.96	9.87	8.70	7.40	7.40	0.00	0.00	-1.30	-14.89
Kazakhstan	1.89	2.07	2.50	2.52	1.71	1.60	1.68	1.58	3.23	3.31	4.20	3.97	-0.23	-5.45	0.67	20.15
Belarus	0.45	0.45	0.50	0.50	2.78	3.14	3.40	3.40	1.25	1.42	1.70	1.70	0.00	0.00	0.28	19.72
Azerbaijan	0.36	0.32	0.35	0.35	2.69	2.55	2.49	2.49	0.95	0.82	0.87	0.87	0.00	0.00	0.06	6.75
Canada	2.27	2.11	2.40	2.40	3.90	3.73	3.50	3.50	8.84	7.89	8.40	8.40	0.00	0.00	0.51	6.45
Australia	4.83	3.90	3.80	4.00	2.79	2.28	1.92	2.08	13.51	8.90	7.30	8.30	1.00	13.70	-0.60	-6.74
Middle East																
Turkey	3.40	3.40	3.60	3.60	1.40	1.88	2.06	2.06	4.75	6.40	7.40	7.40	0.00	0.00	1.00	15.63
Iran	1.61	1.60	1.60	1.55	1.86	1.94	1.94	1.81	3.00	3.10	3.10	2.80	-0.30	-9.68	-0.30	-9.68
Iraq	1.20	0.78	1.00	0.60	1.29	1.26	1.00	1.30	1.55	0.98	1.00	0.78	-0.22	-22.00	-0.20	-20.00
Syria	0.88	0.80	0.80	0.80	0.82	0.97	0.50	0.50	0.72	0.78	0.40	0.40	0.00	0.00	-0.38	-48.52
Africa																
Ethiopia	0.96	1.20	1.20	1.20	2.11	1.75	1.81	1.81	2.03	2.10	2.17	2.17	0.00	0.00	0.07	3.33
Morocco	1.21	1.80	1.75	1.75	0.51	1.11	1.66	1.66	0.62	2.00	2.91	2.91	0.00	0.00	0.91	45.50
Algeria	0.90	0.76	1.03	1.03	1.11	1.27	1.90	1.90	1.00	0.97	1.95	1.95	0.00	0.00	0.98	101.45
Tunisia	0.28	0.39	0.34	0.27	1.34	1.02	1.31	1.16	0.38	0.40	0.45	0.32	-0.13	-28.99	-0.08	-20.80
South Africa	0.09	0.09	0.12	0.12	3.99	3.37	3.54	3.54	0.36	0.31	0.43	0.43	0.00	0.00	0.12	38.44
South America																
Argentina	0.87	0.94	1.20	1.20	3.79	4.00	3.75	3.75	3.30	3.74	4.50	4.50	0.00	0.00	0.76	20.32
Uruguay	0.19	0.15	0.17	0.17	3.57	2.52	3.64	3.64	0.68	0.39	0.60	0.60	0.00	0.00	0.22	55.84
Brazil	0.10	0.11	0.12	0.12	3.91	2.61	2.88	2.88	0.38	0.28	0.35	0.35	0.00	0.00	0.06	22.34
India	0.59	0.66	0.68	0.68	2.44	2.67	2.61	2.61	1.44	1.75	1.77	1.77	0.00	0.00	0.02	1.14
China	0.43	0.43	0.45	0.45	4.08	4.19	4.11	4.11	1.75	1.80	1.85	1.85	0.00	0.00	0.05	2.78
Mexico	0.33	0.36	0.36	0.36	2.96	2.81	2.78	2.78	0.98	1.00	1.00	1.00	0.00	0.00	0.00	-0.40
Afghanistan	0.22	0.25	0.25	0.25	1.83	1.60	1.40	1.40	0.40	0.40	0.35	0.35	0.00	0.00	-0.05	-12.50
Others	1.88	1.85	1.85	1.83	2.29	2.23	2.30	2.29	4.31	4.13	4.24	4.20	-0.05	-1.13	0.07	1.60

World and Selected Countries and Regions

Table 06 Oats Area, Yield, and Production

Country / Region	Area (Million hectares)				Yield (Metric tons per hectare)				Production (Million metric tons)				Change in Production			
	2016/17	Prel.	2018/19 Proj.		2016/17	Prel.	2018/19 Proj.		2016/17	Prel.	2018/19 Proj.		From last month		From last year	
		2017/18	Feb	Mar		2017/18	Feb	Mar		2017/18	Feb	Mar	MMT	Percent	MMT	Percent
World	9.67	9.51	9.33	9.32	2.50	2.46	2.38	2.39	24.17	23.41	22.22	22.27	0.04	0.20	-1.15	-4.90
United States	0.40	0.33	0.35	0.35	2.37	2.22	2.33	2.33	0.94	0.72	0.82	0.82	0.00	0.00	0.10	13.19
Total Foreign	9.28	9.19	8.98	8.97	2.51	2.47	2.38	2.39	23.23	22.69	21.41	21.45	0.04	0.21	-1.24	-5.47
European Union	2.57	2.68	2.67	2.67	3.13	3.01	3.02	3.02	8.04	8.07	8.05	8.05	0.00	0.00	-0.02	-0.27
Former Soviet Union - 12																
Russia	2.75	2.78	2.72	2.73	1.73	1.96	1.73	1.73	4.75	5.44	4.70	4.72	0.02	0.32	-0.73	-13.34
Ukraine	0.21	0.21	0.20	0.20	2.38	2.31	2.15	2.15	0.51	0.48	0.42	0.42	0.00	0.00	-0.06	-12.68
Belarus	0.15	0.15	0.16	0.16	2.67	3.33	2.88	2.88	0.39	0.50	0.46	0.46	0.00	0.00	-0.04	-8.00
Kazakhstan	0.21	0.21	0.25	0.24	1.60	1.34	1.39	1.43	0.34	0.29	0.34	0.34	0.00	-1.18	0.05	17.89
Canada	0.93	1.05	1.00	1.00	3.49	3.55	3.45	3.45	3.23	3.73	3.45	3.45	0.00	0.00	-0.28	-7.58
South America																
Argentina	0.32	0.22	0.22	0.22	2.45	2.24	2.40	2.40	0.79	0.49	0.52	0.52	0.00	0.00	0.02	4.88
Brazil	0.29	0.34	0.35	0.35	2.84	1.86	2.18	2.18	0.83	0.63	0.77	0.77	0.00	0.00	0.14	21.45
Chile	0.14	0.11	0.09	0.09	5.20	5.31	5.00	5.09	0.71	0.57	0.43	0.47	0.04	10.00	-0.10	-17.45
Uruguay	0.03	0.03	0.02	0.02	1.58	1.52	1.58	1.58	0.04	0.04	0.04	0.04	0.00	0.00	0.00	0.00
Oceania																
Australia	1.03	0.74	0.64	0.64	2.20	1.51	1.41	1.40	2.27	1.12	0.90	0.89	-0.01	-1.11	-0.23	-20.54
New Zealand	0.01	0.01	0.01	0.01	5.38	5.67	5.33	5.33	0.04	0.03	0.03	0.03	0.00	0.00	0.00	-5.88
China	0.21	0.21	0.22	0.22	1.41	1.43	1.42	1.42	0.29	0.30	0.31	0.31	0.00	0.00	0.01	1.67
Africa																
Algeria	0.09	0.09	0.09	0.09	1.29	1.29	1.29	1.29	0.11	0.11	0.11	0.11	0.00	0.00	0.00	0.00
Morocco	0.05	0.05	0.05	0.05	1.44	1.44	1.40	1.40	0.07	0.07	0.06	0.06	0.00	0.00	0.00	-3.08
South Africa	0.04	0.03	0.03	0.03	1.60	1.83	1.83	1.83	0.06	0.06	0.06	0.06	0.00	0.00	0.00	0.00
Other Europe																
Norway	0.08	0.08	0.08	0.08	4.34	4.00	4.00	4.00	0.33	0.30	0.30	0.30	0.00	0.00	0.00	0.00
Serbia	0.03	0.03	0.03	0.03	2.17	2.17	2.17	2.17	0.07	0.07	0.07	0.07	0.00	0.00	0.00	0.00
Albania	0.01	0.01	0.01	0.01	2.08	2.08	2.08	2.08	0.03	0.03	0.03	0.03	0.00	0.00	0.00	0.00
Bosnia and Herzegovina	0.01	0.01	0.01	0.01	2.90	2.57	3.00	3.00	0.03	0.02	0.03	0.03	0.00	0.00	0.01	66.67
Turkey	0.10	0.11	0.10	0.10	2.27	2.21	2.30	2.30	0.23	0.25	0.23	0.23	0.00	0.00	-0.02	-8.00
Mexico	0.04	0.04	0.05	0.05	1.89	1.64	1.80	1.80	0.07	0.07	0.09	0.09	0.00	0.00	0.02	25.00
Others	0.02	0.01	0.01	0.01	1.93	1.86	1.79	1.79	0.03	0.03	0.03	0.03	0.00	0.00	0.00	-3.85

World and Selected Countries and Regions

Table 07 Rye Area, Yield, and Production

Country / Region	Area (Million hectares)				Yield (Metric tons per hectare)				Production (Million metric tons)				Change in Production						
	2016/17	Prel.		2018/19 Proj.		2016/17	Prel.		2018/19 Proj.		2016/17	Prel.		2018/19 Proj.		From last month		From last year	
		2017/18	Feb	Mar	2017/18		Feb	Mar	2017/18	Feb		Mar	MMT	Percent	MMT	Percent			
World	4.13	4.03	3.80	3.81	2.98	3.06	2.78	2.78	12.33	12.31	10.57	10.58	0.01	0.11	-1.73	-14.02			
United States	0.17	0.12	0.11	0.11	2.04	2.15	1.95	1.95	0.34	0.26	0.21	0.21	0.00	0.00	-0.05	-17.69			
Total Foreign	3.97	3.91	3.69	3.70	3.02	3.08	2.81	2.80	11.99	12.05	10.36	10.37	0.01	0.12	-1.68	-13.95			
European Union	1.92	1.94	2.00	2.00	3.89	3.82	3.30	3.30	7.44	7.41	6.60	6.60	0.00	0.00	-0.81	-10.94			
Former Soviet Union - 12																			
Russia	1.25	1.17	0.95	0.96	2.03	2.17	2.00	2.00	2.54	2.54	1.90	1.91	0.01	0.74	-0.63	-24.76			
Belarus	0.24	0.26	0.25	0.25	2.70	2.62	2.60	2.60	0.65	0.67	0.65	0.65	0.00	0.00	-0.02	-2.99			
Ukraine	0.15	0.17	0.15	0.15	2.72	2.97	2.76	2.76	0.39	0.51	0.40	0.40	0.00	0.00	-0.11	-21.57			
Kazakhstan	0.04	0.03	0.02	0.02	1.14	1.26	1.14	1.05	0.04	0.04	0.03	0.02	0.00	-8.00	-0.02	-41.03			
Turkey	0.12	0.10	0.11	0.11	2.61	3.17	2.91	2.91	0.30	0.32	0.32	0.32	0.00	0.00	0.00	0.00			
Canada	0.14	0.10	0.08	0.08	3.11	3.39	2.97	2.97	0.44	0.34	0.24	0.24	0.00	0.00	-0.11	-31.29			
South America																			
Chile	0.00	0.00	0.00	0.00	5.00	5.00	5.00	5.00	0.01	0.01	0.01	0.01	0.00	0.00	0.00	0.00			
Argentina	0.04	0.05	0.05	0.05	1.93	1.91	2.08	2.08	0.08	0.09	0.10	0.10	0.00	0.00	0.01	16.28			
Other Europe																			
Bosnia and Herzegovina	0.00	0.00	0.00	0.00	3.25	3.67	3.67	3.67	0.01	0.01	0.01	0.01	0.00	0.00	0.00	0.00			
Switzerland	0.00	0.00	0.00	0.00	5.50	5.50	5.50	5.50	0.01	0.01	0.01	0.01	0.00	0.00	0.00	0.00			
Serbia	0.00	0.00	0.00	0.00	2.50	2.50	2.50	2.50	0.01	0.01	0.01	0.01	0.00	0.00	0.00	0.00			
Australia	0.04	0.04	0.04	0.04	0.63	0.65	0.65	0.65	0.03	0.03	0.03	0.03	0.00	0.00	0.00	0.00			
Others	0.03	0.04	0.04	0.04	1.30	1.72	1.72	1.72	0.04	0.06	0.06	0.06	0.00	0.00	0.00	0.00			

World and Selected Countries and Regions

Table 08 Sorghum Area, Yield, and Production

Country / Region	Area (Million hectares)				Yield (Metric tons per hectare)				Production (Million metric tons)				Change in Production			
	Prel.		2018/19 Proj.		Prel.		2018/19 Proj.		Prel.		2018/19 Proj.		From last month		From last year	
	2016/17	2017/18	Feb	Mar	2016/17	2017/18	Feb	Mar	2016/17	2017/18	Feb	Mar	MMT	Percent	MMT	Percent
World	44.29	40.12	41.31	41.11	1.43	1.44	1.41	1.38	63.37	57.73	58.40	56.92	-1.48	-2.53	-0.80	-1.39
United States	2.49	2.04	2.05	2.05	4.89	4.50	4.53	4.53	12.20	9.19	9.27	9.27	0.00	0.00	0.08	0.86
Total Foreign	41.80	38.08	39.26	39.06	1.22	1.27	1.25	1.22	51.17	48.53	49.13	47.65	-1.48	-3.01	-0.88	-1.82
Africa																
Nigeria	5.82	5.80	5.80	5.80	1.19	1.09	1.17	1.17	6.94	6.30	6.80	6.80	0.00	0.00	0.50	7.94
Ethiopia	1.88	1.82	1.82	1.82	2.52	2.23	2.25	2.25	4.75	4.05	4.10	4.10	0.00	0.00	0.05	1.23
Sudan	9.16	6.30	7.00	7.00	0.71	0.59	0.57	0.57	6.47	3.74	4.00	4.00	0.00	0.00	0.26	6.87
Burkina	1.73	1.67	1.80	1.80	0.96	0.82	1.00	1.00	1.66	1.37	1.80	1.80	0.00	0.00	0.43	31.77
Mali	1.56	1.35	1.35	1.35	0.89	1.26	0.96	0.96	1.39	1.71	1.30	1.30	0.00	0.00	-0.41	-23.75
Niger	3.61	3.70	3.70	3.70	0.50	0.53	0.46	0.46	1.81	1.94	1.70	1.70	0.00	0.00	-0.24	-12.55
Cameroon	0.86	0.85	0.85	0.85	1.56	1.65	1.65	1.65	1.34	1.40	1.40	1.40	0.00	0.00	0.00	0.00
Tanzania	0.78	0.80	0.80	0.80	0.97	1.00	1.00	1.00	0.76	0.80	0.80	0.80	0.00	0.00	0.00	0.00
Egypt	0.14	0.14	0.14	0.14	5.36	5.36	5.36	5.36	0.75	0.75	0.75	0.75	0.00	0.00	0.00	0.00
Uganda	0.40	0.35	0.35	0.35	0.79	0.94	0.97	0.97	0.32	0.33	0.34	0.34	0.00	0.00	0.01	3.03
Ghana	0.23	0.25	0.25	0.25	1.00	1.12	1.12	1.12	0.23	0.28	0.28	0.28	0.00	0.00	0.00	0.00
Mozambique	0.26	0.37	0.32	0.32	0.45	0.68	0.67	0.67	0.12	0.25	0.22	0.22	0.00	0.00	-0.04	-14.00
South Africa	0.04	0.03	0.05	0.05	3.62	3.97	2.22	3.40	0.15	0.12	0.10	0.17	0.07	70.00	0.06	47.83
Mexico	1.47	1.35	1.35	1.35	3.17	3.37	3.41	3.41	4.64	4.55	4.60	4.60	0.00	0.00	0.06	1.21
South America																
Argentina	0.70	0.70	0.70	0.70	4.86	4.29	4.00	4.00	3.40	3.00	2.80	2.80	0.00	0.00	-0.20	-6.67
Brazil	0.63	0.78	0.70	0.70	2.97	2.73	2.57	2.57	1.87	2.14	1.80	1.80	0.00	0.00	-0.34	-15.73
South Asia																
India	5.86	4.83	5.20	5.20	0.78	1.03	0.88	0.72	4.57	4.95	4.60	3.75	-0.85	-18.48	-1.20	-24.24
Pakistan	0.26	0.20	0.23	0.23	0.58	0.65	0.62	0.62	0.15	0.13	0.14	0.14	0.00	0.00	0.01	7.69
China	0.63	0.68	0.72	0.72	4.78	4.74	4.79	4.79	2.99	3.20	3.45	3.45	0.00	0.00	0.25	7.81
Australia	0.37	0.53	0.75	0.54	2.70	2.71	2.67	2.41	0.99	1.44	2.00	1.30	-0.70	-35.00	-0.14	-9.66
European Union	0.12	0.12	0.13	0.13	5.45	5.41	5.45	5.45	0.63	0.67	0.69	0.69	0.00	0.00	0.02	3.13
Others	5.32	5.47	5.27	5.27	0.99	0.99	1.04	1.04	5.26	5.43	5.47	5.47	0.00	0.00	0.04	0.64

World and Selected Countries and Regions

Table 09 Rice Area, Yield, and Production
World and Selected Countries and Regions

Country / Region	Area (Million hectares)				Yield (Metric tons per hectare)				Production (Million metric tons)				Change in Production			
	Prel.		2018/19 Proj.		Prel.		2018/19 Proj.		Prel.		2018/19 Proj.		From last month		From last year	
	2016/17	2017/18	Feb	Mar	2016/17	2017/18	Feb	Mar	2016/17	2017/18	Feb	Mar	MMT	Percent	MMT	Percent
World	162.35	162.61	162.76	163.47	4.51	4.55	4.55	4.58	490.94	495.37	495.87	501.57	5.70	1.15	6.20	1.25
United States	1.25	0.96	1.18	1.18	8.11	8.41	8.62	8.62	7.12	5.66	7.12	7.12	0.00	0.00	1.46	25.80
Total Foreign	161.10	161.65	161.58	162.29	4.49	4.53	4.52	4.55	483.82	489.71	488.75	494.45	5.70	1.17	4.74	0.97
East Asia																
China	30.75	30.75	30.19	30.19	6.87	6.92	7.03	7.03	147.77	148.87	148.49	148.49	0.00	0.00	-0.38	-0.26
Japan	1.57	1.56	1.56	1.56	6.94	6.87	6.78	6.78	7.93	7.79	7.70	7.70	0.00	0.00	-0.09	-1.12
Korea, South	0.78	0.76	0.74	0.74	7.22	7.01	6.99	6.99	4.20	3.97	3.87	3.87	0.00	0.00	-0.10	-2.62
Korea, North	0.47	0.48	0.50	0.50	5.49	5.09	4.92	4.92	1.67	1.57	1.60	1.60	0.00	0.00	0.03	1.72
South Asia																
India	43.99	43.79	44.00	44.50	3.74	3.87	3.78	3.91	109.70	112.91	111.00	116.00	5.00	4.50	3.09	2.74
Bangladesh	11.75	11.27	11.68	11.77	4.42	4.35	4.43	4.46	34.58	32.65	34.50	35.00	0.50	1.45	2.35	7.20
Pakistan	2.72	2.90	2.80	2.98	3.77	3.85	3.96	3.80	6.85	7.45	7.40	7.54	0.14	1.89	0.09	1.21
Nepal	1.50	1.49	1.50	1.50	3.48	3.34	3.53	3.53	3.48	3.31	3.53	3.53	0.00	0.00	0.22	6.65
Sri Lanka	0.69	0.77	0.90	0.90	4.36	4.30	4.30	4.30	2.03	2.25	2.63	2.63	0.00	0.00	0.38	17.04
Southeast Asia																
Indonesia	12.24	12.25	12.24	12.24	4.78	4.76	4.80	4.80	36.86	37.00	37.30	37.30	0.00	0.00	0.30	0.81
Vietnam	7.71	7.69	7.76	7.76	5.68	5.92	5.99	5.99	27.40	28.47	29.07	29.07	0.00	0.00	0.60	2.10
Thailand	10.25	10.68	10.96	10.96	2.84	2.89	2.86	2.86	19.20	20.37	20.70	20.70	0.00	0.00	0.33	1.62
Burma	7.03	7.10	7.10	7.10	2.81	2.90	2.89	2.89	12.65	13.20	13.12	13.12	0.00	0.00	-0.08	-0.61
Philippines	4.72	4.84	4.81	4.81	3.93	4.01	4.01	4.01	11.69	12.24	12.15	12.15	0.00	0.00	-0.09	-0.69
Cambodia	3.10	3.18	3.25	3.25	2.78	2.78	2.78	2.78	5.26	5.40	5.50	5.50	0.00	0.00	0.10	1.87
Laos	0.97	0.96	0.99	0.99	3.18	3.30	3.30	3.30	1.95	2.00	2.05	2.05	0.00	0.00	0.05	2.50
Malaysia	0.70	0.70	0.70	0.70	4.03	4.03	4.03	4.03	1.82	1.82	1.82	1.82	0.00	0.00	0.00	0.00
South America																
Brazil	1.98	1.97	1.85	1.80	6.22	6.12	6.16	6.11	8.38	8.21	7.75	7.48	-0.27	-3.51	-0.73	-8.87
Peru	0.42	0.42	0.41	0.41	7.54	7.20	7.35	7.35	2.19	2.10	2.10	2.10	0.00	0.00	0.00	0.14
Africa																
Egypt	0.85	0.76	0.46	0.46	8.18	8.18	8.78	8.78	4.80	4.30	2.80	2.80	0.00	0.00	-1.50	-34.88
Madagascar	1.48	1.43	1.50	1.50	2.59	2.18	2.87	2.87	2.44	1.98	2.75	2.75	0.00	0.00	0.77	38.71
Nigeria	3.17	3.60	3.60	3.60	2.21	2.06	2.11	2.11	4.41	4.66	4.79	4.79	0.00	0.00	0.13	2.70
European Union	0.44	0.43	0.42	0.42	6.83	6.69	6.89	6.93	2.09	2.00	1.99	2.00	0.01	0.50	0.00	0.20
Iran	0.63	0.63	0.63	0.63	4.03	4.88	4.12	4.83	1.66	2.01	1.70	1.99	0.29	17.24	-0.02	-0.99
Others	11.21	11.25	11.05	11.05	3.09	3.13	3.09	3.10	22.83	23.18	22.43	22.46	0.03	0.12	-0.72	-3.09

Yield is on a rough basis, before the milling process. Production is on a milled basis, after the milling process.

Table 10 Total Oilseed Area, Yield, and Production

World and Selected Countries and Regions

Country / Region	Area (Million hectares)				Yield (Metric tons per hectare)				Production (Million metric tons)				Change in Production			
	2016/17	Prel.	2018/19 Proj.		2016/17	Prel.	2018/19 Proj.		2016/17	Prel.	2018/19 Proj.		From last month		From last year	
		2017/18	Feb	Mar		2017/18	Feb	Mar		2017/18	Feb	Mar	MMT	Percent	MMT	Percent
World Total	--	--	--	--	--	--	--	--	572.85	576.23	593.26	593.03	-0.22	-0.04	16.81	2.92
Total Foreign	--	--	--	--	--	--	--	--	445.91	444.74	459.25	459.03	-0.22	-0.05	14.29	3.21
Oilseed, Copra	--	--	--	--	--	--	--	--	5.51	5.73	5.83	5.83	0.00	0.00	0.10	1.66
Oilseed, Palm Kernel	--	--	--	--	--	--	--	--	17.35	18.70	19.45	19.45	0.00	0.00	0.75	4.00
Major Oilseeds	234.57	244.79	245.58	245.64	2.34	2.25	2.31	2.31	549.99	551.79	567.98	567.76	-0.22	-0.04	15.96	2.89
United States	39.25	42.80	41.76	41.76	3.23	3.07	3.21	3.21	126.94	131.48	134.00	134.00	0.00	0.00	2.52	1.92
Foreign Oilseeds	195.32	201.99	203.82	203.88	2.17	2.08	2.13	2.13	423.05	420.31	433.98	433.75	-0.22	-0.05	13.44	3.20
South America	60.79	61.58	64.11	64.03	3.19	2.95	3.06	3.05	193.96	181.94	196.30	195.44	-0.86	-0.44	13.50	7.42
Brazil	35.03	36.56	37.80	37.91	3.35	3.40	3.21	3.19	117.47	124.48	121.41	121.03	-0.39	-0.32	-3.45	-2.77
Argentina	19.74	18.70	20.01	20.01	3.05	2.27	3.00	3.00	60.16	42.52	59.99	59.99	0.00	0.00	17.47	41.09
Paraguay	3.46	3.47	3.58	3.38	3.02	2.99	2.69	2.70	10.44	10.39	9.62	9.12	-0.50	-5.20	-1.27	-12.21
Bolivia	1.28	1.53	1.52	1.52	1.74	1.77	1.83	1.83	2.22	2.71	2.78	2.78	0.00	0.00	0.08	2.77
Uruguay	1.13	1.15	1.05	1.05	2.89	1.23	1.98	1.98	3.28	1.41	2.07	2.07	0.00	0.00	0.66	46.60
China	22.72	24.16	24.03	24.03	2.42	2.46	2.49	2.49	54.92	59.49	59.78	59.78	0.00	0.00	0.29	0.49
South Asia	37.06	37.57	37.51	37.46	1.09	1.02	1.00	1.02	40.43	38.37	37.55	38.19	0.64	1.71	-0.18	-0.46
India	33.83	34.11	34.35	34.30	1.07	1.00	0.97	0.99	36.32	33.99	33.49	34.04	0.56	1.66	0.05	0.15
Pakistan	2.88	3.11	2.80	2.80	1.29	1.27	1.30	1.33	3.70	3.96	3.64	3.73	0.09	2.39	-0.23	-5.79
European Union	11.79	12.36	12.42	12.42	2.71	2.83	2.64	2.64	31.96	34.98	32.74	32.74	0.00	0.00	-2.25	-6.42
Former Soviet Union - 12	22.94	24.36	25.62	25.78	1.74	1.66	1.78	1.78	39.91	40.47	45.59	45.80	0.20	0.45	5.32	13.15
Russia	10.20	10.66	11.95	12.18	1.47	1.45	1.54	1.54	14.99	15.48	18.45	18.73	0.28	1.50	3.25	20.97
Ukraine	9.11	9.57	9.50	9.50	2.28	2.07	2.34	2.34	20.74	19.81	22.25	22.25	0.00	0.00	2.44	12.33
Uzbekistan	1.18	1.25	1.20	1.10	1.19	1.21	1.10	1.20	1.40	1.51	1.32	1.32	0.00	0.00	-0.19	-12.57
Canada	10.52	12.23	11.68	11.68	2.49	2.38	2.44	2.44	26.25	29.10	28.46	28.46	0.00	0.00	-0.65	-2.22
Africa	20.09	20.19	19.88	19.93	0.94	0.96	0.94	0.94	18.84	19.46	18.70	18.65	-0.05	-0.26	-0.82	-4.20
Nigeria	3.90	3.97	3.97	3.97	1.04	1.08	1.08	1.08	4.07	4.30	4.30	4.30	0.00	0.00	0.00	0.00
South Africa	1.29	1.48	1.26	1.31	1.82	1.70	1.56	1.46	2.35	2.52	1.96	1.91	-0.05	-2.45	-0.60	-24.02
Tanzania	1.40	1.35	1.50	1.50	0.85	0.89	0.86	0.86	1.19	1.20	1.29	1.29	0.00	0.00	0.09	7.08
Southeast Asia	3.26	3.22	3.19	3.19	1.41	1.40	1.40	1.40	4.59	4.52	4.47	4.47	0.00	0.00	-0.06	-1.22
Indonesia	1.03	1.00	0.98	0.98	1.64	1.61	1.61	1.61	1.69	1.62	1.58	1.58	0.00	0.00	-0.04	-2.16
Burma	1.88	1.88	1.88	1.88	1.18	1.19	1.18	1.18	2.21	2.24	2.22	2.22	0.00	0.00	-0.02	-0.67
Australia	3.32	3.30	2.27	2.26	1.70	1.58	1.40	1.34	5.66	5.22	3.18	3.03	-0.15	-4.62	-2.19	-41.93
Turkey	1.11	1.25	1.36	1.36	2.49	2.53	2.46	2.46	2.76	3.17	3.35	3.35	0.00	0.00	0.19	5.85
Others	1.71	1.76	1.77	1.76	2.20	2.03	2.20	2.20	3.76	3.59	3.88	3.87	-0.01	-0.28	0.28	7.84

World Total and Total Foreign: (Major Oilseeds plus copra and palm kernel) Major Oilseeds: (soybeans, sunflowerseeds, peanuts(inshell), cottonseed and rapeseed)

Table 11 Soybean Area, Yield, and Production

Country / Region	Area (Million hectares)				Yield (Metric tons per hectare)				Production (Million metric tons)				Change in Production			
	2016/17	Prel.	2018/19 Proj.		2016/17	Prel.	2018/19 Proj.		2016/17	Prel.	2018/19 Proj.		From last month		From last year	
		2017/18	Feb	Mar		2017/18	Feb	Mar		2017/18	Feb	Mar	MMT	Percent	MMT	Percent
World	119.77	124.60	126.27	126.08	2.92	2.73	2.86	2.86	349.31	340.47	360.99	360.08	-0.92	-0.25	19.60	5.76
United States	33.47	36.24	35.66	35.66	3.49	3.31	3.47	3.47	116.93	120.07	123.66	123.66	0.00	0.00	3.60	3.00
Total Foreign	86.30	88.36	90.61	90.42	2.69	2.49	2.62	2.61	232.38	220.41	237.33	236.41	-0.92	-0.39	16.01	7.26
South America																
Brazil	33.90	35.15	36.10	36.10	3.38	3.44	3.24	3.23	114.60	120.80	117.00	116.50	-0.50	-0.43	-4.30	-3.56
Argentina	17.34	16.30	17.50	17.50	3.17	2.32	3.14	3.14	55.00	37.80	55.00	55.00	0.00	0.00	17.20	45.50
Paraguay	3.39	3.40	3.50	3.30	3.05	3.03	2.71	2.73	10.34	10.30	9.50	9.00	-0.50	-5.26	-1.30	-12.62
Bolivia	1.13	1.40	1.40	1.40	1.86	1.86	1.93	1.93	2.11	2.60	2.70	2.70	0.00	0.00	0.10	3.85
Uruguay	1.09	1.10	0.99	0.99	2.95	1.21	2.00	2.00	3.21	1.33	1.98	1.98	0.00	0.00	0.65	48.43
East Asia																
China	7.60	8.25	8.40	8.40	1.80	1.84	1.89	1.89	13.64	15.20	15.90	15.90	0.00	0.00	0.70	4.61
Korea, South	0.05	0.05	0.06	0.05	1.53	1.87	1.75	1.75	0.08	0.09	0.10	0.09	-0.01	-11.00	0.00	3.49
Korea, North	0.18	0.15	0.15	0.15	1.61	1.49	1.50	1.50	0.28	0.22	0.23	0.23	0.00	0.00	0.00	0.90
Japan	0.15	0.15	0.15	0.15	1.59	1.66	1.74	1.74	0.24	0.25	0.26	0.26	0.00	0.00	0.02	6.02
India	11.18	10.40	11.00	11.00	0.98	0.80	1.00	1.00	10.99	8.35	11.00	11.00	0.00	0.00	2.65	31.74
Canada	2.23	2.94	2.55	2.55	2.96	2.63	2.86	2.86	6.60	7.72	7.30	7.30	0.00	0.00	-0.42	-5.40
Former Soviet Union - 12																
Russia	2.12	2.57	2.70	2.74	1.48	1.41	1.44	1.47	3.13	3.62	3.90	4.03	0.13	3.26	0.41	11.21
Ukraine	1.86	1.98	1.70	1.70	2.31	1.97	2.59	2.59	4.29	3.89	4.40	4.40	0.00	0.00	0.51	13.11
European Union	0.80	0.93	0.93	0.93	3.00	2.88	2.90	2.90	2.41	2.67	2.70	2.70	0.00	0.00	0.03	1.24
Southeast Asia																
Indonesia	0.43	0.42	0.41	0.41	1.31	1.29	1.27	1.27	0.57	0.54	0.52	0.52	0.00	0.00	-0.02	-3.70
Vietnam	0.07	0.06	0.06	0.06	1.48	1.50	1.50	1.50	0.10	0.09	0.09	0.09	0.00	0.00	0.00	0.00
Thailand	0.03	0.04	0.03	0.03	1.78	1.57	1.47	1.47	0.06	0.06	0.05	0.05	0.00	0.00	-0.01	-9.09
Burma	0.15	0.15	0.15	0.15	1.07	1.07	1.07	1.07	0.16	0.16	0.16	0.16	0.00	0.00	0.00	0.00
Serbia	0.19	0.20	0.22	0.22	3.51	2.30	2.84	2.84	0.65	0.46	0.63	0.63	0.00	0.00	0.17	35.87
Mexico	0.28	0.26	0.21	0.21	1.85	1.65	1.62	1.62	0.52	0.43	0.34	0.34	0.00	0.00	-0.09	-21.48
Africa																
South Africa	0.57	0.79	0.75	0.73	2.29	1.96	1.73	1.75	1.32	1.54	1.30	1.28	-0.03	-1.92	-0.27	-17.21
Nigeria	0.94	1.00	1.00	1.00	1.00	1.00	1.00	1.00	0.94	1.00	1.00	1.00	0.00	0.00	0.00	0.00
Zambia	0.14	0.23	0.18	0.18	1.94	1.56	1.83	1.83	0.27	0.35	0.32	0.32	0.00	0.00	-0.03	-8.83
Uganda	0.05	0.05	0.05	0.05	0.60	0.60	0.60	0.60	0.03	0.03	0.03	0.03	0.00	0.00	0.00	0.00
Middle East																
Iran	0.06	0.07	0.07	0.07	2.25	2.29	2.29	2.29	0.14	0.16	0.16	0.16	0.00	0.00	0.00	0.00
Turkey	0.03	0.02	0.03	0.03	3.33	3.75	3.85	3.85	0.10	0.09	0.10	0.10	0.00	0.00	0.01	11.11
Others	0.34	0.33	0.33	0.33	1.78	2.03	2.02	2.02	0.61	0.66	0.67	0.66	-0.01	-1.20	0.00	-0.61

World and Selected Countries and Regions

Table 12 Cottonseed Area, Yield, and Production

Country / Region	Area (Million hectares)				Yield (Metric tons per hectare)				Production (Million metric tons)				Change in Production			
	2016/17	Prel.	2018/19 Proj.		2016/17	Prel.	2018/19 Proj.		2016/17	Prel.	2018/19 Proj.		From last month		From last year	
		2017/18	Feb	Mar		2017/18	Feb	Mar		2017/18	Feb	Mar	MMT	Percent	MMT	Percent
World	29.18	32.93	32.45	32.46	1.34	1.37	1.33	1.34	39.08	44.98	43.26	43.45	0.19	0.45	-1.53	-3.41
United States	3.85	4.49	4.26	4.26	1.27	1.30	1.23	1.23	4.87	5.83	5.26	5.26	0.00	0.00	-0.57	-9.78
Total Foreign	25.33	28.44	28.19	28.20	1.35	1.38	1.35	1.35	34.21	39.16	38.00	38.19	0.19	0.51	-0.96	-2.46
South Asia																
India	10.85	12.45	12.25	12.25	1.06	0.99	0.94	0.94	11.46	12.31	11.46	11.46	0.00	0.00	-0.85	-6.90
Pakistan	2.50	2.70	2.40	2.40	1.33	1.32	1.35	1.39	3.34	3.55	3.25	3.34	0.09	2.68	-0.22	-6.08
China	2.90	3.40	3.35	3.35	3.03	3.18	3.22	3.22	8.80	10.80	10.78	10.78	0.00	0.00	-0.02	-0.21
Former Soviet Union - 12																
Uzbekistan	1.18	1.25	1.20	1.10	1.19	1.21	1.10	1.20	1.40	1.51	1.32	1.32	0.00	0.00	-0.19	-12.57
Turkmenistan	0.55	0.55	0.55	0.55	0.95	0.96	0.69	0.65	0.52	0.53	0.38	0.36	-0.02	-5.82	-0.17	-32.19
Tajikistan	0.17	0.19	0.19	0.19	1.02	0.97	0.93	0.93	0.17	0.18	0.18	0.18	0.00	0.00	0.00	-2.22
Kazakhstan	0.12	0.13	0.13	0.13	0.97	0.94	0.99	0.99	0.11	0.12	0.13	0.13	0.00	0.00	0.01	10.26
South America																
Brazil	0.94	1.18	1.45	1.56	2.44	2.57	2.57	2.47	2.30	3.02	3.73	3.85	0.12	3.08	0.83	27.43
Argentina	0.24	0.32	0.42	0.42	1.16	0.87	0.96	0.96	0.28	0.28	0.40	0.40	0.00	0.00	0.13	45.13
Middle East																
Turkey	0.40	0.47	0.52	0.52	2.63	2.77	2.32	2.32	1.05	1.30	1.21	1.21	0.00	0.00	-0.09	-7.08
Syria	0.04	0.03	0.03	0.03	2.00	2.17	2.12	2.12	0.08	0.07	0.05	0.05	0.00	0.00	-0.01	-18.46
Iran	0.10	0.09	0.09	0.09	0.98	0.96	1.06	1.06	0.10	0.08	0.09	0.09	0.00	0.00	0.01	9.76
Australia	0.58	0.53	0.30	0.30	2.16	2.72	2.60	2.50	1.25	1.44	0.78	0.75	-0.03	-3.84	-0.69	-47.92
European Union	0.27	0.30	0.32	0.32	1.53	1.67	1.70	1.70	0.42	0.49	0.54	0.54	0.00	0.00	0.05	9.13
Africa																
Burkina	0.70	0.85	0.70	0.70	0.52	0.39	0.47	0.47	0.36	0.33	0.33	0.33	0.00	0.00	0.00	0.00
Mali	0.66	0.71	0.73	0.73	0.54	0.56	0.52	0.52	0.35	0.40	0.38	0.38	0.00	0.00	-0.01	-3.54
Cameroon	0.23	0.23	0.23	0.23	1.04	1.11	1.14	1.14	0.24	0.25	0.26	0.26	0.00	0.00	0.01	4.80
Cote d'Ivoire	0.35	0.37	0.37	0.37	0.48	0.57	0.58	0.58	0.17	0.21	0.21	0.21	0.00	0.00	0.00	1.90
Benin	0.42	0.53	0.56	0.56	0.68	0.71	0.77	0.77	0.28	0.38	0.43	0.43	0.00	0.00	0.05	14.36
Tanzania	0.40	0.35	0.50	0.50	0.21	0.29	0.37	0.37	0.09	0.10	0.19	0.19	0.00	0.00	0.09	84.16
Egypt	0.06	0.09	0.15	0.15	0.95	1.00	1.05	1.05	0.05	0.09	0.15	0.15	0.00	0.00	0.06	67.03
Nigeria	0.28	0.27	0.27	0.27	0.36	0.38	0.38	0.38	0.10	0.10	0.10	0.10	0.00	0.00	0.00	0.00
Uganda	0.07	0.08	0.08	0.08	1.49	0.86	0.74	0.74	0.11	0.07	0.06	0.06	0.00	0.00	-0.01	-14.49
Zimbabwe	0.21	0.20	0.20	0.20	0.25	0.29	0.22	0.22	0.05	0.06	0.04	0.04	0.00	0.00	-0.02	-25.86
Sudan	0.10	0.12	0.12	0.12	1.93	2.03	2.13	2.13	0.19	0.24	0.26	0.26	0.00	0.00	0.01	5.35
Mexico	0.10	0.21	0.24	0.24	2.50	2.52	2.49	2.49	0.26	0.53	0.59	0.59	0.00	0.00	0.06	10.57
Burma	0.24	0.25	0.24	0.24	1.17	1.24	1.23	1.23	0.29	0.31	0.30	0.30	0.00	0.00	-0.02	-4.84
Others	0.70	0.63	0.63	0.63	0.59	0.66	0.65	0.71	0.42	0.42	0.41	0.45	0.04	10.62	0.03	7.95

World and Selected Countries and Regions

Table 13 Peanut Area, Yield, and Production

Country / Region	Area (Million hectares)				Yield (Metric tons per hectare)				Production (Million metric tons)				Change in Production			
	2016/17	Prel.	2018/19 Proj.		2016/17	Prel.	2018/19 Proj.		2016/17	Prel.	2018/19 Proj.		From last month		From last year	
		2017/18	Feb	Mar		2017/18	Feb	Mar		2017/18	Feb	Mar	MMT	Percent	MMT	Percent
World	26.43	25.92	25.23	25.23	1.67	1.73	1.66	1.66	44.16	44.94	41.87	41.86	0.00	-0.01	-3.07	-6.84
United States	0.62	0.72	0.55	0.55	4.07	4.49	4.47	4.47	2.53	3.23	2.48	2.48	0.00	0.00	-0.75	-23.27
Total Foreign	25.81	25.20	24.67	24.67	1.61	1.65	1.60	1.60	41.63	41.71	39.39	39.39	0.00	-0.01	-2.32	-5.57
China	4.45	4.61	4.56	4.56	3.68	3.71	3.73	3.73	16.36	17.09	17.00	17.00	0.00	0.00	-0.09	-0.54
Africa																
Nigeria	2.68	2.70	2.70	2.70	1.13	1.19	1.19	1.19	3.03	3.20	3.20	3.20	0.00	0.00	0.00	0.00
Sudan	2.32	1.80	1.80	1.80	0.79	0.78	0.78	0.78	1.83	1.40	1.40	1.40	0.00	0.00	0.00	0.00
Senegal	1.15	1.25	1.10	1.10	0.82	1.13	0.91	0.91	0.95	1.41	1.00	1.00	0.00	0.00	-0.41	-29.18
Cameroon	0.45	0.43	0.43	0.43	1.65	1.40	1.40	1.40	0.75	0.60	0.60	0.60	0.00	0.00	0.00	0.00
Ghana	0.34	0.34	0.34	0.34	1.24	1.31	1.31	1.31	0.42	0.44	0.44	0.44	0.00	0.00	0.00	0.00
Chad	0.97	0.95	0.95	0.95	1.07	1.05	1.05	1.05	1.04	1.00	1.00	1.00	0.00	0.00	0.00	0.00
Malawi	0.37	0.37	0.37	0.37	0.74	0.88	0.88	0.88	0.28	0.33	0.33	0.33	0.00	0.00	0.00	0.00
Congo (Kinshasa)	0.50	0.50	0.50	0.50	0.85	0.85	0.85	0.85	0.42	0.42	0.42	0.42	0.00	0.00	0.00	0.00
Niger	0.77	0.75	0.75	0.75	0.59	0.53	0.53	0.53	0.45	0.40	0.40	0.40	0.00	0.00	0.00	0.00
Mali	0.43	0.38	0.38	0.38	0.87	0.87	1.07	1.07	0.37	0.33	0.40	0.40	0.00	0.00	0.08	23.08
Uganda	0.43	0.43	0.43	0.43	0.71	0.71	0.71	0.71	0.30	0.30	0.30	0.30	0.00	0.00	0.00	0.00
Burkina	0.42	0.43	0.43	0.43	0.80	0.81	0.81	0.81	0.34	0.35	0.35	0.35	0.00	0.00	0.00	0.00
Guinea	0.27	0.30	0.30	0.30	1.39	1.20	1.20	1.20	0.38	0.36	0.36	0.36	0.00	0.00	0.00	0.00
Egypt	0.06	0.06	0.06	0.06	3.20	3.20	3.20	3.20	0.21	0.21	0.21	0.21	0.00	0.00	0.00	0.00
Central African Republic	0.11	0.10	0.10	0.10	1.21	1.50	1.50	1.50	0.14	0.15	0.15	0.15	0.00	0.00	0.00	0.00
South Africa	0.06	0.06	0.02	0.02	2.20	1.36	1.50	1.35	0.12	0.08	0.03	0.03	0.00	-10.00	-0.05	-64.47
Mozambique	0.40	0.37	0.38	0.38	0.28	0.32	0.34	0.34	0.11	0.12	0.13	0.13	0.00	0.00	0.01	8.33
Cote d'Ivoire	0.08	0.08	0.08	0.08	1.35	1.38	1.38	1.38	0.11	0.11	0.11	0.11	0.00	0.00	0.00	0.00
Benin	0.16	0.15	0.15	0.15	0.86	0.93	0.93	0.93	0.14	0.14	0.14	0.14	0.00	0.00	0.00	0.00
South Asia																
India	5.34	4.93	4.70	4.70	1.30	1.35	1.00	1.00	6.92	6.65	4.70	4.70	0.00	0.00	-1.95	-29.32
Pakistan	0.09	0.09	0.10	0.10	0.90	0.94	0.95	0.95	0.09	0.09	0.09	0.09	0.00	0.00	0.00	2.27
Southeast Asia																
Indonesia	0.60	0.58	0.57	0.57	1.87	1.85	1.86	1.86	1.12	1.08	1.06	1.06	0.00	0.00	-0.02	-1.40
Burma	0.89	0.89	0.89	0.89	1.55	1.55	1.55	1.55	1.38	1.38	1.38	1.38	0.00	0.00	0.00	0.00
Vietnam	0.20	0.19	0.19	0.19	2.37	2.37	2.37	2.37	0.46	0.45	0.45	0.45	0.00	0.00	0.00	0.00
Thailand	0.02	0.02	0.02	0.02	1.67	1.67	1.67	1.67	0.04	0.04	0.04	0.04	0.00	0.00	0.00	0.00
South America																
Argentina	0.32	0.38	0.33	0.33	3.98	2.27	3.23	3.23	1.29	0.87	1.05	1.05	0.00	0.00	0.18	21.11
Brazil	0.13	0.14	0.15	0.15	3.61	3.69	3.50	3.50	0.47	0.51	0.53	0.53	0.00	0.00	0.01	2.34
Mexico	0.06	0.06	0.06	0.06	1.71	1.70	1.70	1.70	0.10	0.10	0.10	0.10	0.00	0.00	0.00	0.00
Others	1.75	1.88	1.86	1.86	1.16	1.13	1.10	1.10	2.04	2.13	2.04	2.04	0.00	0.00	-0.09	-4.04

Table 14 Sunflowerseed Area, Yield, and Production

Country / Region	Area (Million hectares)				Yield (Metric tons per hectare)				Production (Million metric tons)				Change in Production						
	2016/17	Prel.		2018/19 Proj.		2016/17	Prel.		2018/19 Proj.		2016/17	Prel.		2018/19 Proj.		From last month		From last year	
		2017/18	Feb	Mar	2017/18		Feb	Mar	2017/18	Feb		Mar	MMT	Percent	MMT	Percent			
World	25.82	25.98	26.60	26.73	1.86	1.82	1.94	1.93	48.01	47.40	51.49	51.46	-0.03	-0.06	4.06	8.56			
United States	0.62	0.54	0.50	0.50	1.94	1.80	1.94	1.94	1.20	0.97	0.96	0.96	0.00	0.00	-0.01	-1.03			
Total Foreign	25.20	25.44	26.11	26.24	1.86	1.83	1.94	1.92	46.81	46.43	50.53	50.50	-0.03	-0.06	4.07	8.76			
Former Soviet Union - 12																			
Russia	7.18	7.15	7.75	7.94	1.51	1.45	1.62	1.60	10.86	10.36	12.55	12.71	0.16	1.27	2.35	22.66			
Ukraine	6.80	6.80	6.80	6.80	2.24	2.01	2.21	2.21	15.20	13.70	15.00	15.00	0.00	0.00	1.30	9.49			
Kazakhstan	0.81	0.88	0.93	0.85	0.94	1.02	1.08	1.00	0.76	0.90	1.00	0.85	-0.15	-15.20	-0.06	-6.09			
European Union	4.13	4.31	4.29	4.29	2.08	2.25	2.31	2.31	8.60	9.68	9.90	9.90	0.00	0.00	0.22	2.28			
South America																			
Argentina	1.82	1.68	1.75	1.75	1.95	2.11	2.00	2.00	3.55	3.54	3.50	3.50	0.00	0.00	-0.04	-1.07			
Uruguay	0.04	0.05	0.06	0.06	1.50	1.56	1.61	1.61	0.07	0.08	0.09	0.09	0.00	0.00	0.01	15.38			
Bolivia	0.14	0.13	0.12	0.12	0.80	0.80	0.70	0.70	0.11	0.11	0.08	0.08	0.00	0.00	-0.03	-23.81			
Brazil	0.06	0.10	0.10	0.10	1.65	1.54	1.55	1.55	0.10	0.15	0.16	0.16	0.00	0.00	0.01	4.03			
Paraguay	0.03	0.03	0.03	0.03	1.60	1.66	1.69	1.69	0.05	0.05	0.05	0.05	0.00	0.00	0.00	1.89			
China	1.15	1.25	1.25	1.25	2.59	2.50	2.60	2.60	2.99	3.12	3.25	3.25	0.00	0.00	0.13	4.17			
South Asia																			
India	0.39	0.33	0.40	0.35	0.82	0.70	0.81	0.80	0.32	0.23	0.32	0.28	-0.04	-13.58	0.05	21.74			
Pakistan	0.07	0.08	0.07	0.07	1.07	1.13	1.07	1.07	0.08	0.09	0.08	0.08	0.00	0.00	-0.02	-16.67			
Middle East																			
Turkey	0.60	0.70	0.75	0.75	2.20	2.21	2.40	2.40	1.32	1.55	1.80	1.80	0.00	0.00	0.25	16.13			
Iran	0.04	0.04	0.04	0.04	0.98	1.08	1.08	1.08	0.04	0.04	0.04	0.04	0.00	0.00	0.00	0.00			
Israel	0.01	0.01	0.01	0.01	1.60	1.60	1.60	1.60	0.02	0.02	0.02	0.02	0.00	0.00	0.00	0.00			
Africa																			
Egypt	0.01	0.01	0.01	0.01	2.43	2.38	2.38	2.38	0.02	0.02	0.02	0.02	0.00	0.00	0.00	0.00			
Morocco	0.02	0.02	0.02	0.02	1.29	1.29	1.29	1.29	0.03	0.03	0.03	0.03	0.00	0.00	0.00	0.00			
South Africa	0.64	0.60	0.45	0.52	1.37	1.43	1.22	1.10	0.87	0.86	0.55	0.56	0.01	2.55	-0.30	-34.57			
Burma	0.60	0.60	0.60	0.60	0.65	0.65	0.65	0.65	0.39	0.39	0.39	0.39	0.00	0.00	0.00	0.00			
Canada	0.03	0.03	0.03	0.03	1.82	2.23	2.11	2.11	0.05	0.06	0.06	0.06	0.00	0.00	0.00	-1.72			
Australia	0.03	0.02	0.03	0.02	1.14	1.82	1.28	1.21	0.03	0.03	0.03	0.02	-0.01	-28.13	-0.01	-25.81			
Others	0.61	0.63	0.64	0.64	2.25	2.28	2.52	2.52	1.36	1.43	1.62	1.62	0.00	0.00	0.19	13.38			

World and Selected Countries and Regions

Table 15 Rapeseed Area, Yield, and Production

Country / Region	Area (Million hectares)				Yield (Metric tons per hectare)				Production (Million metric tons)				Change in Production			
	2016/17	Prel.		2018/19 Proj.		2016/17	Prel.		2018/19 Proj.		2016/17	Prel.		2018/19 Proj.		
		2017/18	Feb	Mar	2017/18		Feb	Mar	2017/18	Feb		Mar	MMT	Percent	MMT	Percent
World	33.37	35.37	35.02	35.14	2.08	2.09	2.01	2.02	69.43	74.00	70.37	70.91	0.54	0.76	-3.09	-4.18
United States	0.69	0.81	0.79	0.79	2.05	1.71	2.08	2.08	1.41	1.39	1.64	1.64	0.00	0.00	0.25	17.93
Total Foreign	32.69	34.56	34.24	34.35	2.08	2.10	2.01	2.02	68.03	72.61	68.73	69.26	0.54	0.78	-3.34	-4.61
European Union	6.58	6.83	6.88	6.88	3.12	3.24	2.85	2.85	20.54	22.15	19.60	19.60	0.00	0.00	-2.55	-11.49
Canada	8.26	9.27	9.10	9.10	2.37	2.30	2.32	2.32	19.60	21.33	21.10	21.10	0.00	0.00	-0.23	-1.07
China	6.62	6.65	6.47	6.47	1.98	2.00	1.99	1.99	13.13	13.27	12.85	12.85	0.00	0.00	-0.42	-3.19
South Asia																
India	6.07	6.00	6.00	6.00	1.09	1.08	1.00	1.10	6.62	6.45	6.00	6.60	0.60	10.00	0.15	2.33
Pakistan	0.21	0.24	0.23	0.23	0.95	0.96	0.98	0.98	0.20	0.23	0.23	0.23	0.00	0.00	0.00	0.00
Bangladesh	0.25	0.25	0.25	0.25	0.92	0.92	0.92	0.92	0.23	0.23	0.23	0.23	0.00	0.00	0.00	0.00
Former Soviet Union - 12																
Russia	0.91	0.95	1.50	1.50	1.10	1.58	1.33	1.33	1.00	1.50	2.00	1.99	-0.01	-0.55	0.49	32.87
Ukraine	0.45	0.79	1.00	1.00	2.78	2.80	2.85	2.85	1.25	2.22	2.85	2.85	0.00	0.00	0.63	28.55
Belarus	0.21	0.33	0.35	0.35	1.24	1.81	1.57	1.31	0.26	0.60	0.55	0.46	-0.09	-17.09	-0.15	-24.38
Kazakhstan	0.16	0.25	0.25	0.37	1.06	1.11	1.10	1.08	0.17	0.28	0.28	0.39	0.12	43.27	0.12	41.22
Australia	2.68	2.70	1.90	1.90	1.61	1.36	1.21	1.16	4.31	3.67	2.30	2.20	-0.10	-4.35	-1.47	-40.05
South America																
Chile	0.05	0.06	0.05	0.06	3.98	3.89	4.20	4.20	0.18	0.22	0.23	0.25	0.02	9.25	0.03	11.71
Paraguay	0.03	0.03	0.04	0.04	2.00	1.00	1.50	1.50	0.05	0.03	0.06	0.06	0.00	0.00	0.03	100.00
Switzerland	0.02	0.02	0.02	0.02	3.14	3.14	3.14	3.14	0.07	0.07	0.07	0.07	0.00	0.00	0.00	0.00
Ethiopia	0.02	0.04	0.04	0.04	1.79	1.71	1.57	1.57	0.04	0.06	0.06	0.06	0.00	0.00	-0.01	-8.33
Others	0.17	0.15	0.15	0.15	2.26	2.09	2.20	2.20	0.38	0.31	0.34	0.34	0.00	0.00	0.03	9.45

World and Selected Countries and Regions

Table 16 Copra, Palm Kernel, and Palm Oil Production

Country / Region	Production (Million metric tons)				Change in Production			
	2016/17	Prel.	2018/19 Proj.		From last month		From last year	
		2017/18	Feb	Mar	MMT	Percent	MMT	Percent
Oilseed, Copra								
Philippines	2.30	2.60	2.70	2.70	0.00	0.00	0.10	3.85
Indonesia	1.58	1.45	1.42	1.42	0.00	0.00	-0.03	-2.07
India	0.72	0.75	0.75	0.75	0.00	0.00	0.00	0.00
Vietnam	0.26	0.28	0.29	0.29	0.00	0.00	0.00	0.00
Mexico	0.21	0.21	0.22	0.22	0.00	0.00	0.01	4.76
Papua New Guinea	0.10	0.10	0.10	0.10	0.00	0.00	0.00	0.00
Thailand	0.07	0.07	0.07	0.07	0.00	0.00	0.00	0.00
Sri Lanka	0.07	0.07	0.07	0.07	0.00	0.00	0.00	0.00
Solomon Islands	0.03	0.03	0.03	0.03	0.00	0.00	0.00	0.00
Vanuatu/New Hebrides	0.03	0.03	0.03	0.03	0.00	0.00	0.00	0.00
World	5.51	5.73	5.83	5.83	0.00	0.00	0.10	1.75
Oilseed, Palm Kernel								
Indonesia	9.50	10.50	10.90	10.90	0.00	0.00	0.40	3.81
Malaysia	4.78	4.92	5.20	5.20	0.00	0.00	0.28	5.69
Thailand	0.75	0.82	0.87	0.87	0.00	0.00	0.05	6.10
Nigeria	0.73	0.73	0.73	0.73	0.00	0.00	0.00	0.00
Colombia	0.23	0.33	0.34	0.34	0.00	0.00	0.01	3.03
Guatemala	0.15	0.17	0.17	0.17	0.00	0.00	0.00	0.00
Papua New Guinea	0.16	0.17	0.17	0.17	0.00	0.00	0.00	0.00
Honduras	0.14	0.14	0.14	0.14	0.00	0.00	0.00	0.00
Brazil	0.12	0.13	0.14	0.14	0.00	0.00	0.01	7.69
Ecuador	0.11	0.12	0.12	0.12	0.00	0.00	0.00	0.00
World	17.35	18.70	19.45	19.45	0.00	0.00	0.75	4.01
Oil, Palm								
Indonesia	36.00	39.50	41.50	41.50	0.00	0.00	2.00	5.06
Malaysia	18.86	19.68	20.50	20.50	0.00	0.00	0.82	4.17
Thailand	2.50	2.70	2.90	2.90	0.00	0.00	0.20	7.41
Colombia	1.15	1.63	1.63	1.63	0.00	0.00	0.00	0.00
Nigeria	0.99	1.03	1.02	1.02	0.00	0.00	-0.01	-0.98
Guatemala	0.74	0.85	0.85	0.85	0.00	0.00	0.00	0.00
Papua New Guinea	0.65	0.63	0.63	0.63	0.00	0.00	0.00	0.00
Honduras	0.62	0.58	0.58	0.58	0.00	0.00	0.00	0.00
Ecuador	0.57	0.57	0.58	0.58	0.00	0.00	0.01	1.75
Ghana	0.52	0.52	0.52	0.52	0.00	0.00	0.00	0.00
World	65.27	70.46	73.49	73.49	0.00	0.00	3.03	4.30

World and Selected Countries and Regions

Table 17 Cotton Area, Yield, and Production

Country / Region	Area (Million hectares)				Yield (Kilograms per hectare)				Production (Million 480 lb. bales)				Change in Production			
	2016/17	Prel.	2018/19 Proj.		2016/17	Prel.	2018/19 Proj.		2016/17	Prel.	2018/19 Proj.		From last month		From last year	
		2017/18	Feb	Mar		2017/18	Feb	Mar		2017/18	Feb	Mar	MBales	Percent	MBales	Percent
World	29.81	33.56	33.09	33.11	779	803	779	782	106.66	123.78	118.45	118.89	0.44	0.37	-4.89	-3.95
United States	3.85	4.49	4.26	4.26	972	1,014	939	939	17.17	20.92	18.39	18.39	0.00	0.00	-2.53	-12.11
Total Foreign	25.97	29.06	28.83	28.84	750	771	756	759	89.49	102.86	100.06	100.50	0.44	0.44	-2.35	-2.29
South Asia																
India	10.85	12.45	12.25	12.25	542	507	480	480	27.00	29.00	27.00	27.00	0.00	0.00	-2.00	-6.90
Pakistan	2.50	2.70	2.40	2.40	671	661	680	699	7.70	8.20	7.50	7.70	0.20	2.67	-0.50	-6.10
China	2.90	3.40	3.35	3.35	1,708	1,761	1,787	1,787	22.75	27.50	27.50	27.50	0.00	0.00	0.00	0.00
South America																
Brazil	0.94	1.18	1.45	1.56	1,626	1,708	1,712	1,640	7.02	9.22	11.40	11.75	0.35	3.07	2.53	27.44
Argentina	0.24	0.32	0.42	0.42	680	558	596	596	0.75	0.82	1.15	1.15	0.00	0.00	0.33	40.24
Paraguay	0.01	0.01	0.01	0.01	416	416	416	416	0.02	0.02	0.02	0.02	0.00	0.00	0.00	0.00
Africa																
Burkina	0.70	0.85	0.70	0.70	407	307	373	373	1.31	1.20	1.20	1.20	0.00	0.00	0.00	0.00
Mali	0.66	0.71	0.73	0.73	412	432	403	403	1.24	1.40	1.35	1.35	0.00	0.00	-0.05	-3.57
Cote d'Ivoire	0.35	0.37	0.37	0.37	394	467	471	471	0.63	0.79	0.80	0.80	0.00	0.00	0.02	1.91
Benin	0.42	0.53	0.56	0.56	446	468	505	505	0.86	1.14	1.30	1.30	0.00	0.00	0.16	14.04
Egypt	0.06	0.09	0.15	0.15	673	718	751	751	0.17	0.30	0.50	0.50	0.00	0.00	0.20	66.67
Cameroon	0.23	0.23	0.23	0.23	455	484	497	497	0.47	0.50	0.53	0.53	0.00	0.00	0.03	5.00
Tanzania	0.40	0.35	0.50	0.50	106	143	185	185	0.20	0.23	0.43	0.43	0.00	0.00	0.20	84.78
Nigeria	0.28	0.27	0.27	0.27	182	190	190	190	0.23	0.24	0.24	0.24	0.00	0.00	0.00	0.00
Zimbabwe	0.21	0.20	0.20	0.20	146	294	218	218	0.14	0.27	0.20	0.20	0.00	0.00	-0.07	-25.93
Ethiopia	0.08	0.06	0.07	0.07	550	635	586	586	0.21	0.18	0.18	0.18	0.00	0.00	0.00	0.00
Former Soviet Union - 12																
Uzbekistan	1.18	1.25	1.20	1.10	687	672	612	668	3.73	3.86	3.38	3.38	0.00	0.00	-0.49	-12.56
Turkmenistan	0.55	0.55	0.55	0.55	529	535	386	364	1.33	1.34	0.97	0.91	-0.06	-5.70	-0.43	-32.09
Tajikistan	0.17	0.19	0.19	0.19	567	671	516	516	0.43	0.57	0.45	0.45	0.00	0.00	-0.12	-21.05
Kazakhstan	0.12	0.13	0.13	0.13	568	523	553	553	0.30	0.30	0.33	0.33	0.00	0.00	0.03	10.00
Middle East																
Turkey	0.40	0.47	0.52	0.52	1,742	1,853	1,549	1,549	3.20	4.00	3.70	3.70	0.00	0.00	-0.30	-7.50
Syria	0.04	0.03	0.03	0.03	1,089	1,161	1,132	1,132	0.20	0.16	0.13	0.13	0.00	0.00	-0.03	-18.75
Iran	0.10	0.09	0.09	0.09	653	640	704	704	0.30	0.25	0.28	0.28	0.00	0.00	0.03	10.00
Australia	0.58	0.53	0.30	0.30	1,520	1,972	1,887	1,814	4.05	4.80	2.60	2.50	-0.10	-3.85	-2.30	-47.92
Mexico	0.10	0.21	0.24	0.24	1,602	1,617	1,598	1,598	0.77	1.56	1.73	1.73	0.00	0.00	0.17	10.58
Burma	0.24	0.25	0.24	0.24	634	634	635	635	0.71	0.73	0.70	0.70	0.00	0.00	-0.03	-3.45
Others	1.69	1.68	1.71	1.71	490	556	577	582	3.80	4.30	4.53	4.58	0.05	0.99	0.28	6.56

World and Selected Countries and Regions

TABLE 18

The table below presents a record of the March projection and the final Estimate. Using world wheat production as an example, the "root mean square error" means that chances are 2 out of 3 that the current forecast will not be above or below the final estimate by more than 0.6 percent. Chances are 9 out of 10 (90% confidence level) that the difference will not exceed 1 percent. The average difference between the March projection and the final estimate is 2.5 million tons, ranging from 0 million to 8 million tons. The March projection has been below the estimate 28 times and above 9 times.

RELIABILITY OF PRODUCTION PROJECTIONS 1/

COMMODITY AND REGION	Root mean square error	90 percent confidence interval	Difference between forecast and final estimate				
			Average	Smallest	Largest	Years	
						Below final	Above final
	Percent		---Million metric tons---				
WHEAT							
World	0.6	1.0	2.5	0.0	8.0	28	9
U.S.	0.1	0.3	0.1	0.0	0.3	15	11
Foreign	0.7	1.1	2.5	0.1	8.0	28	9
COARSE GRAINS 2/							
World	1.2	2.0	10.3	0.5	35.1	31	6
U.S.	0.2	0.3	0.1	0.0	1.3	16	7
Foreign	1.7	2.9	10.3	0.5	35.1	31	6
RICE (Milled)							
World	1.4	2.3	3.6	0.2	13.8	28	9
U.S.	1.3	2.2	0.0	0.0	0.2	11	6
Foreign	1.4	2.3	3.6	0.1	13.8	28	9
SOYBEANS							
World	2.3	3.8	3.4	0.1	12.4	20	17
U.S.	1.3	2.2	0.6	0.0	2.5	16	14
Foreign	3.8	6.4	3.4	0.1	12.6	20	17
COTTON			---Million 480-lb. bales---				
World	1.8	3.1	1.4	0.0	5.2	23	12
U.S.	1.0	1.6	0.1	0.0	0.3	13	23
Foreign	2.2	3.7	1.3	0.0	5.3	23	13
UNITED STATES			-----Million bushels-----				
CORN	0.2	0.3	2	0	38	1	2
SORGHUM	0.1	0.2	0	0	4	0	2
BARLEY	0.7	1.3	1	0	11	16	4
OATS	0.3	0.6	0	0	2	4	4

1/ Marketing years 1981/82 through 2017/18. Final for grains, soybeans and cotton is defined as the first *November* estimates following the marketing year for 1981/82 through 2017/18, and for 2017/18 last month's estimate.

2/ Includes corn, sorghum, barley, oats, rye, millet, and mixed grain

March 2019

Office of Global Analysis, FAS, USDA