



United States Department of Agriculture

Foreign

Agricultural Service

Circular Series

WAP 2-19

February 2019

World Agricultural Production

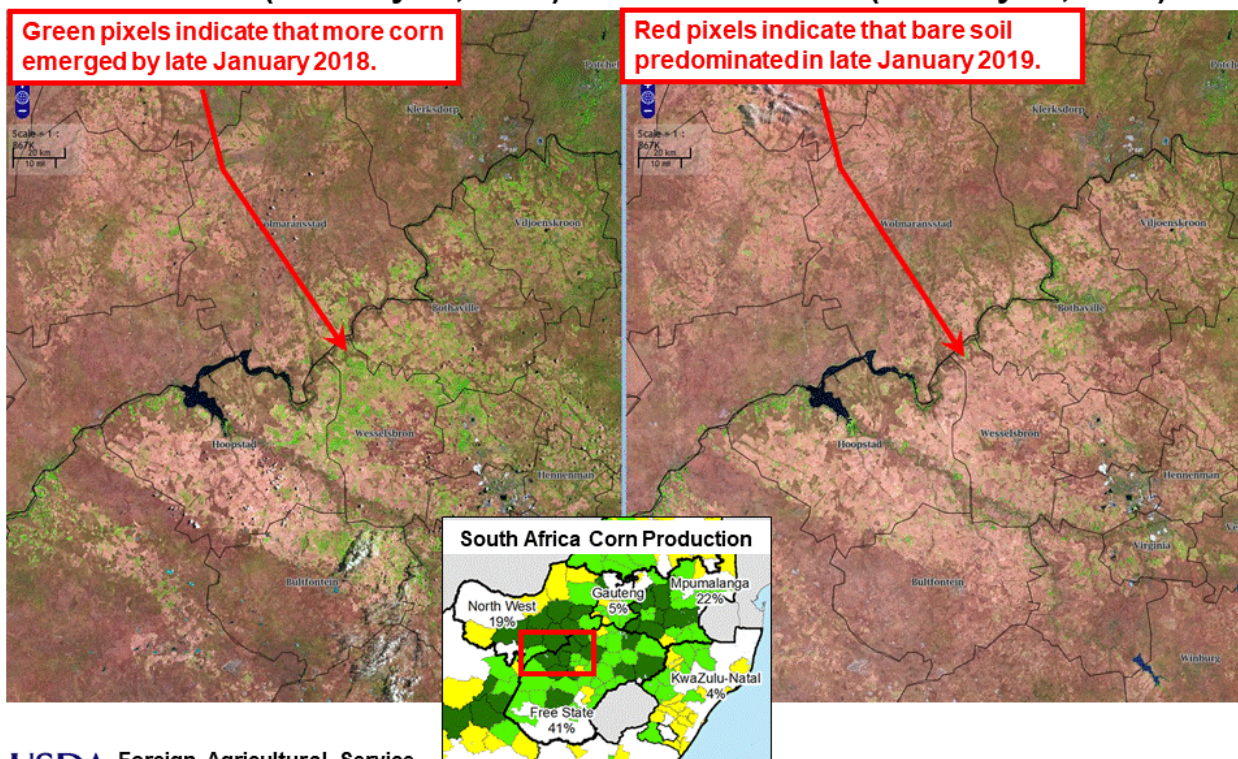
The World Agricultural Supply and Demand Estimates (WASDE) and the World Agricultural Production report were not published in January 2019 due to the lapse in Federal funding.

South Africa Corn: Drought Reduces Production Forecast

Planted Corn Area Comparison

Landsat-8 (January 31, 2018)

Landsat-8 (January 31, 2019)



USDA Foreign Agricultural Service
Office of Global Analysis
International Production Assessment Division

Source: 10-day Surface Reflectance Product (SWIR/NIR/Red) processed by GDA's GeoSynergy

South Africa's 2018/19 corn production is forecast at 11.5 million metric tons (mmt), down 0.5 mmt or 4 percent from December and down 2.0 mmt (15 percent) from last year. The USDA forecast includes output from both the developing and commercial sectors, with the commercial sector accounting for approximately 95 percent of the total crop. Area is estimated at 2.4 million hectares (mha), unchanged from December and down 0.23 mha or 9 percent from last year. Yield is forecast at 4.8 metric tons per hectare, down 4 percent from December and down 7 percent from last year.

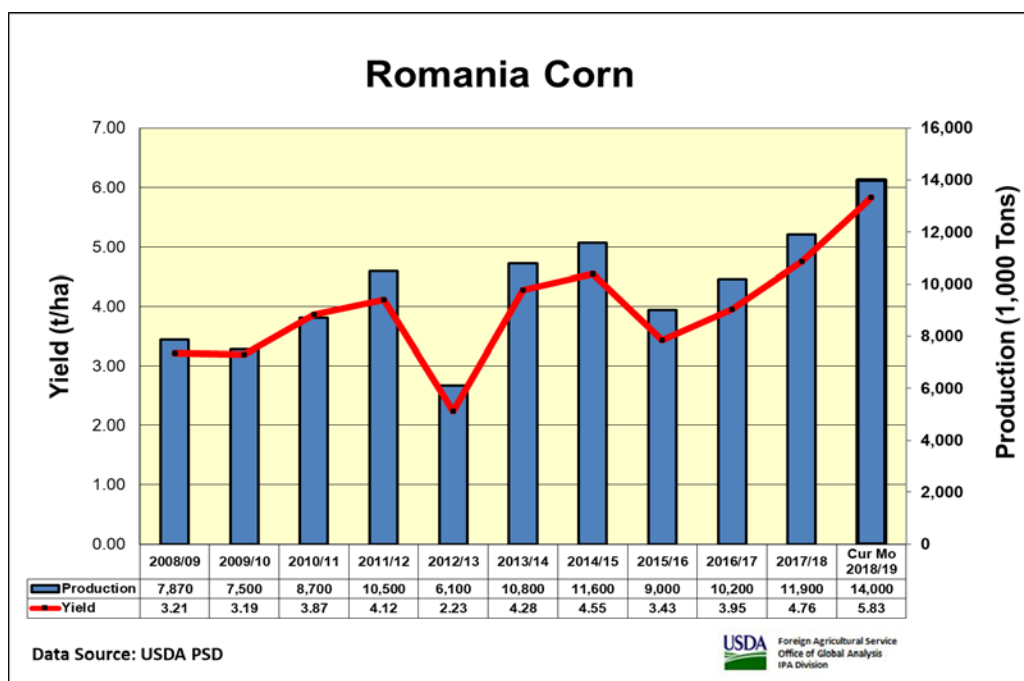
Approved by the World Agricultural Outlook Board

Seasonal rainfall was below average for most of South Africa’s corn belt during the planting season from October through January. Rainfall was delayed by 40 days or more in the western Free State and North West provinces where approximately 60 percent of the corn crop is grown. Most of the western crop was planted in late December and early January, and well beyond the optimal planting dates for favorable yields. The late-planted crop in the west lowered forecast yields to below average.

Satellite imagery in late January shows this year’s crop area in the west is significantly less than last year, and large swathes of bare soil dominate the western region’s landscape. The late-planted crop had not emerged by late January which makes it too early to accurately estimate crop area from satellite imagery. Corn area estimates from satellite imagery should improve in the next few months after the late-planted crop emerges. *(For more information, please contact Curt.Reynolds@fas.usda.gov.)*

Romania Corn: Ideal Weather and Improved Input Use Raise Record Harvest Further

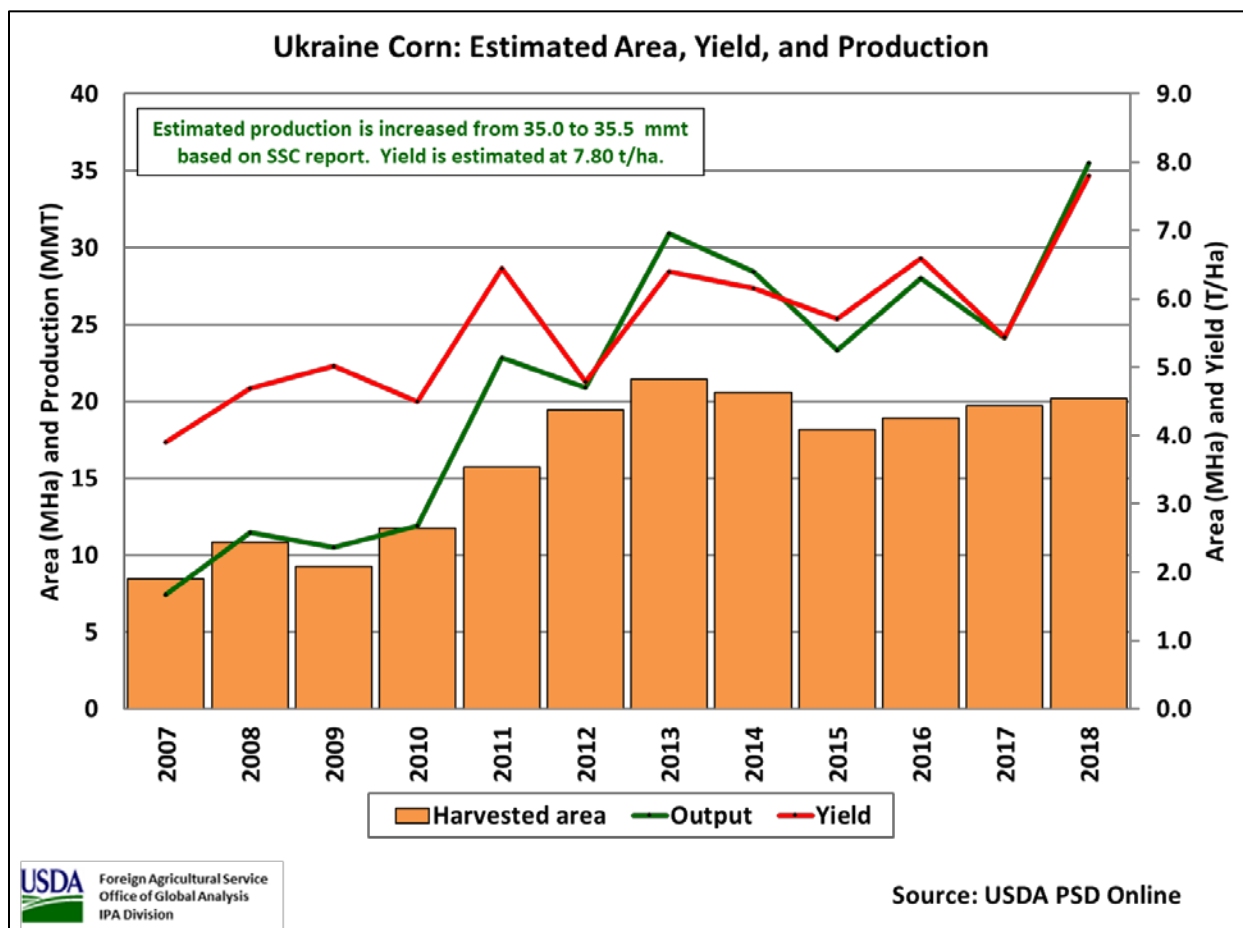
Romania corn production for 2018/19 is estimated at a record 14.0 million metric tons (mmt), up 0.5 mmt (4 percent) from December, up 2.1 mmt (18 percent) from last year, and 31 percent above the 5-year average. Area is estimated at 2.4 million hectares (mha), unchanged from December, down 0.1 mha (4 percent) from last year, and down 6 percent from the 5-year average. Yield is estimated at a record 5.83 tons per hectare, up 4 percent from December, up 23 percent from last year and up 39 percent from the 5-year average. Romania represents 23 percent of the total 2018/19 European Union (EU) production, the largest in the EU, significantly ahead of the second largest producer, France, which had a poor crop.



Moderate summer temperatures (lacking excessive heat), along with favorable rainfall during June and July, aided corn maturation. The beneficial summer conditions enabled Romania to reach new records for both corn yield and production. In addition to favorable weather, corn has benefited from the adoption of better chemicals, fertilizers and new hybrid seed technology. Also, improved machinery, stable EU subsidies and increased (albeit small-scale) irrigation have also bolstered yields. At the beginning of August, when corn is at peak vegetation or greenness, MODIS Normalized Difference Vegetation Index (NDVI) values were the highest in over 15 years. The corn harvest began in late August and ended in October. *(For more information, please contact Bryan.Purcell@fas.usda.gov.)*

For country-specific area, yield, and production estimates within the European Union (EU), please go to PSD Online at <https://apps.fas.usda.gov/PSDOnline/app/index.html#/app/home>, and select “Downloadable Data Sets.” Select the zipped file for “EU Countries Area & Production.”

Ukraine Corn: State Statistical Agency Reports Record Yield



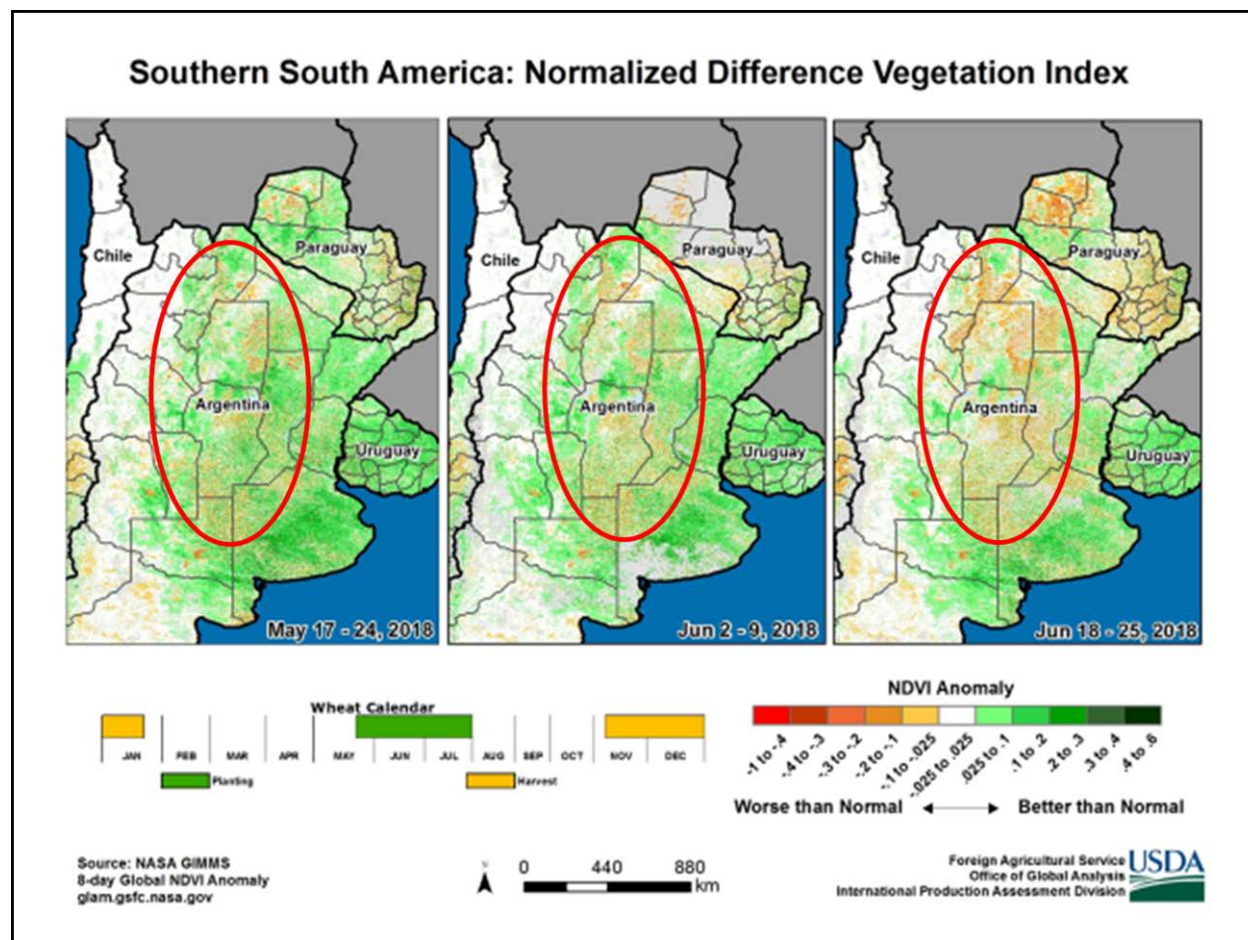
USDA estimates Ukraine corn production for 2018/19 at a record 35.5 million metric tons (mmt), up 0.5 mmt from December, up 11.4 mmt from last year and 4.6 mmt above the previous record crop which was harvested in 2013. Harvest was complete in December. The estimated harvested area is 4.55 million hectares (mha), up 0.05 mha from December. Yield is estimated at a record 7.80 metric tons per hectare and is attributed to favorable conditions throughout the

growing season. The increased estimate is based on preliminary harvest data from the State Statistical Service of Ukraine. (For more information, please contact Katie.McGaughey@fas.usda.gov.)

Argentina Corn: Production Estimate Up 41 Percent from Last Year

Argentina corn production for 2018/19 is estimated at 46.0 million metric tons, up 8 percent from December and 44 percent from last season. Area is estimated at 5.5 million hectares, up 6 percent from December and 6 percent higher than last year. Area is increased due to late planting of early-season hybrids. The estimated yield of 8.36 tons per hectare is 2 percent higher than December's yield and 36 percent higher than last year. Both early-planted and late-planted crops benefited from timely rains in areas affected by the early-season dryness in Cordoba province. Late January rains were positive in most areas; however, in Santa Fe and in the northern provinces the rains resulted in excessive soil moisture. (For more information, please contact Denise.McWilliams@usda.gov.)

Argentina Wheat: Harvest Complete

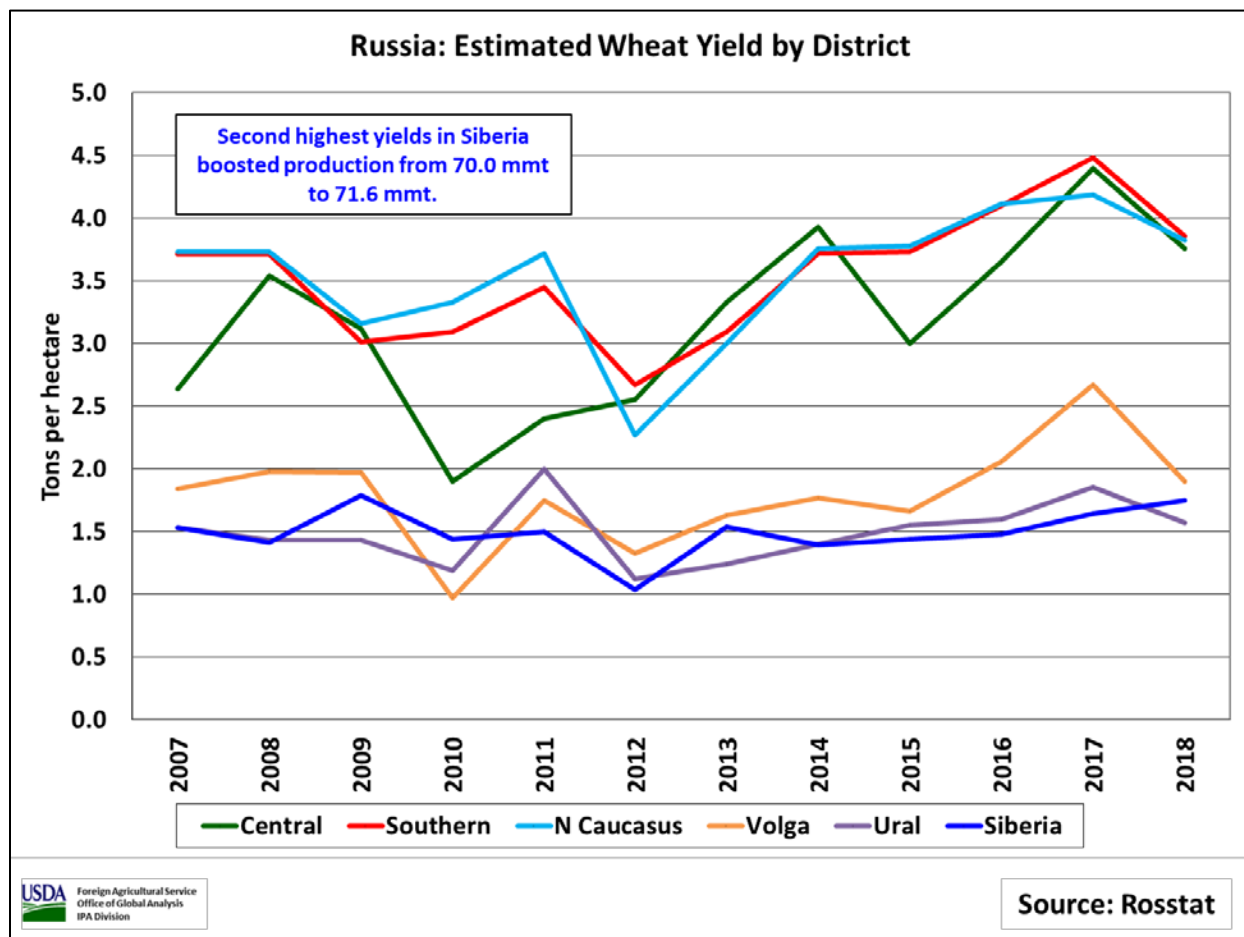


June dryness during jointing and boot stage lowered yield.

USDA estimates Argentina wheat production for 2018/19 at 19.2 million metric tons (mmt), down less than 2 percent from December and up 4 percent from last season. Area is estimated at

6.1 million hectares (mha), down 2 percent from December and up 5 percent from last year. Yield is estimated at 3.15 tons per hectare, down 3 percent from December and down 1 percent from last year. The season started with adequate subsoil moisture during emergence and establishment, but rains stopped and only began again during the beginning of grain-fill. Dryness in Cordoba during jointing through booting reduced yield potential. Late-season rain impeded harvest in Santa Fe and in the northern regions of the country. *(For more information, please contact Denise.McWilliams@usda.gov.)*

Russia Wheat: Second Highest Yield on Record



Russia wheat production for 2018/19 is estimated at 71.6 million metric tons (mmt), up 1.6 mmt from December and down 13.4 mmt from last year's record crop. The estimate includes 51.0 mmt of winter wheat and 20.6 mmt of spring wheat (excludes about 0.5 mmt estimated output from Crimea).

The month-to-month increase is based on preliminary data released by Rosstat, Russia's state statistical agency. Additionally, the net-to-bunker ratio increased this year and is above the 5-year average. Harvested area for total wheat is estimated at 26.2 million hectares (mha) – 14.35 mha winter and 11.85 mha spring. Total-wheat yield for Russia is estimated at 2.73 tons per hectare, the second highest yield on record, and is a result of favorable conditions during the

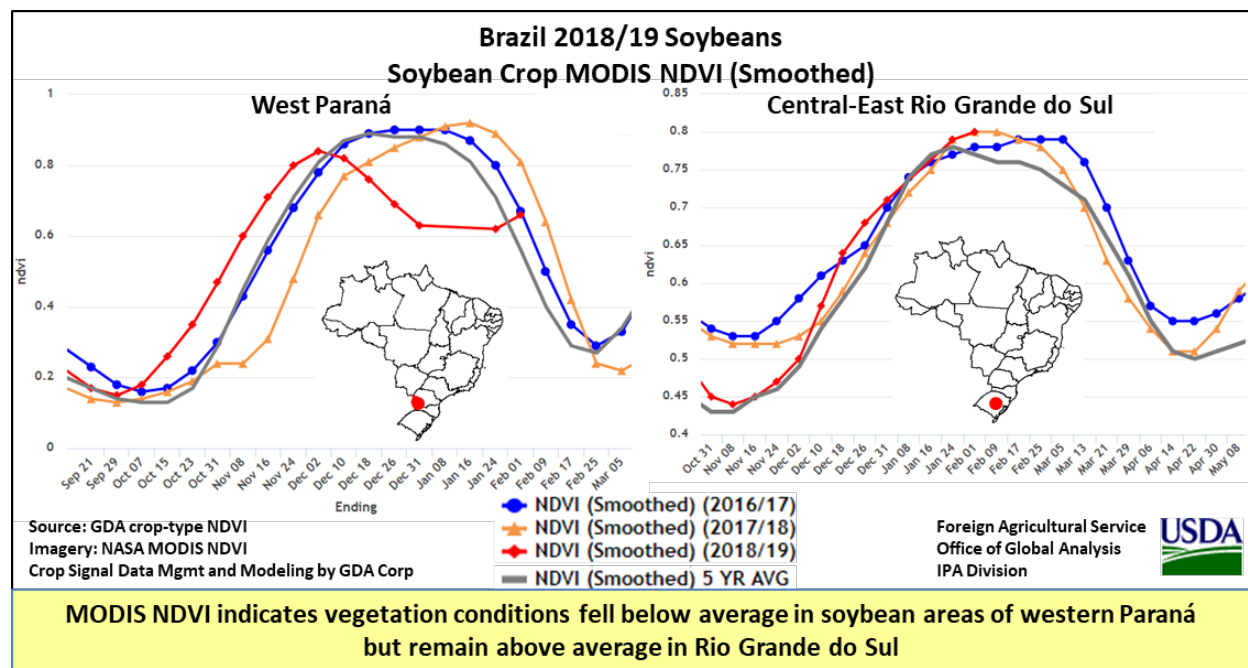
growing season. Final statistics will be released in March, but the final wheat production numbers seldom vary significantly from the preliminary numbers.

Area, yield, and production estimates for Russia winter wheat and spring wheat are available on PSD Online. Select “Downloadable Data Sets” and open the zipped file for “Russia Wheat; Winter/Spring Area & Prod.”

(For more information, please contact Katie.McGaughey@fas.usda.gov.)

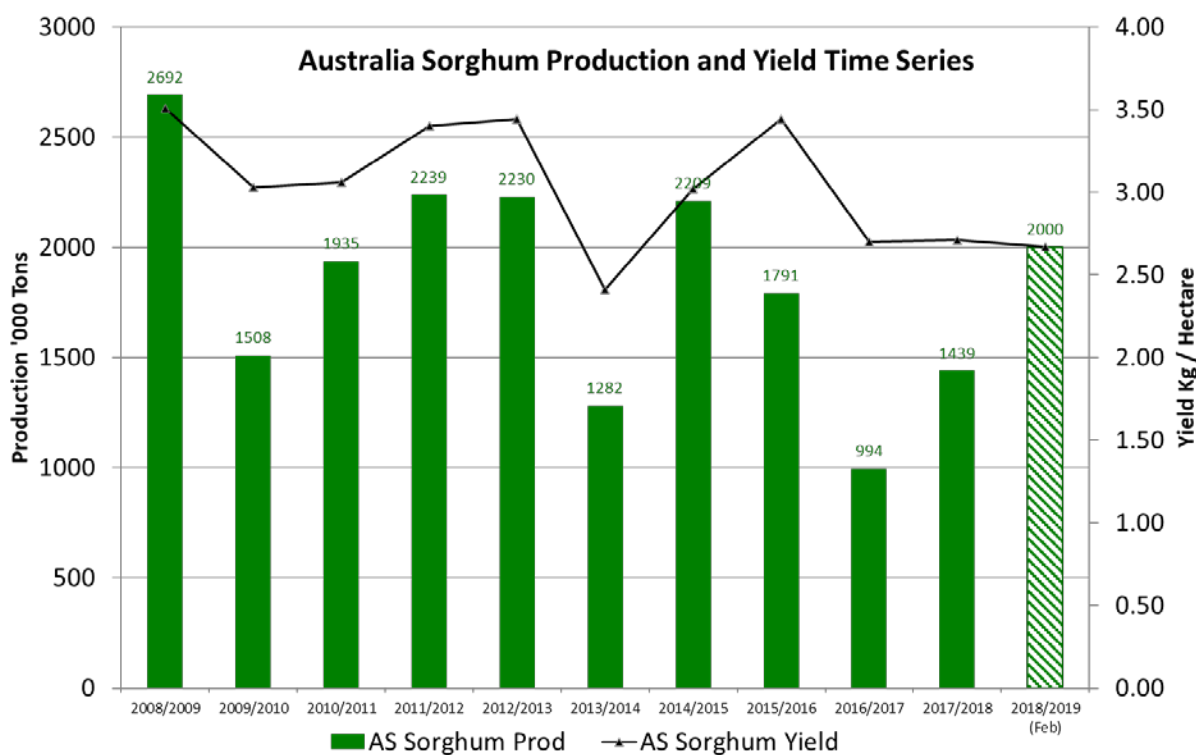
Brazil Soybeans: Production Down Due to Drought

Brazil soybean production for 2018/19 is estimated at 117.0 million metric tons (mmt), down 5 mmt or 4 percent from December and 3 percent from last year’s record. Harvested area is estimated at 36.1 million hectares, down slightly from December, but up 3 percent from last year. Yield is estimated at 3.24 metric tons per hectare, down 4 percent from December and 6 percent below last year’s record, which benefited from favorable weather. Generally favorable weather at the start of the season was followed by irregular rainfall with sustained periods of dryness in portions of the South and Center-West regions.



MODIS Normalized Difference Vegetation Index (NDVI) indicates vegetation conditions declined in some soybean-growing areas of western Paraná, Goiás, Mato Grosso do Sul and Mato Grosso. Estimated yields have been reduced for crops that were affected by drought during pod-filling stages. In other soybean areas, however, crop conditions are good. The majority of crops in Mato Grosso (27 percent of production), much of which was planted earlier than average, received adequate rainfall and yields are estimated above average but below last year. In Rio Grande do Sul (14 percent), the later-harvested crop is developing well due to plentiful rains. Harvest began in January and will continue until May throughout the main soybean regions. (For more information, please contact Maria.Anulacion@fas.usda.gov.)

Australia Sorghum: Heat and Dryness Reduce Production Prospects



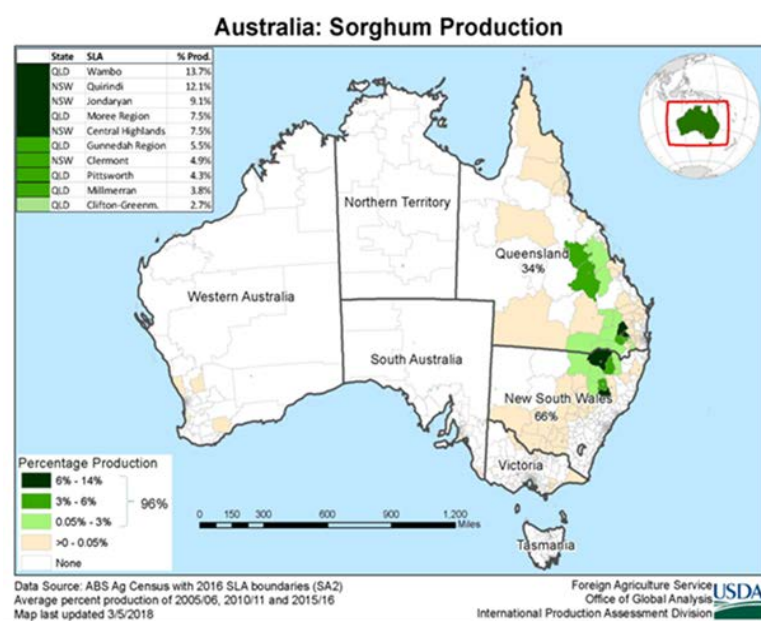
Source: PSD, FAS/USDA

Foreign Agricultural Service
Office of Global Analysis
IPA Division



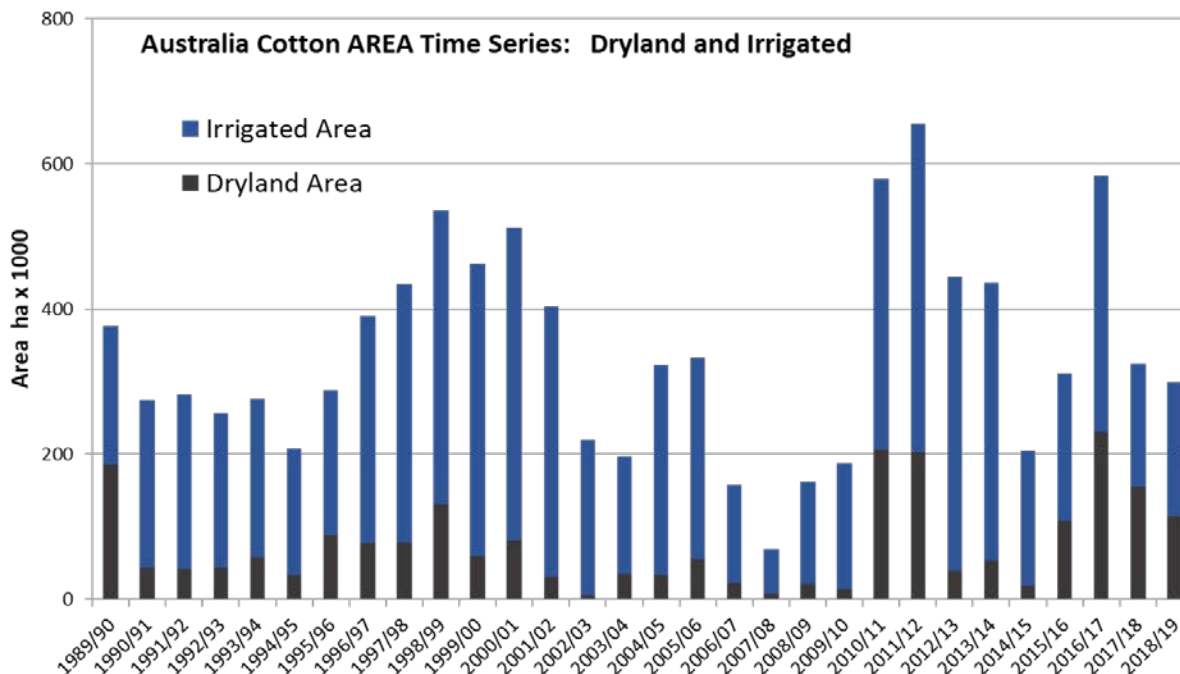
Australia sorghum production for 2018/19 is estimated at 2.0 million tons (mmt), down 0.2 mmt or 9 percent from December, but up 0.6 mmt or 39 percent from last year. Area is estimated at 0.75 million hectares (mha), unchanged from December, but up 0.22 mha or 41 percent from last year. Yield is forecast at 2.67 tons per hectare, down 9 percent from December and 7 percent below the five-year average.

Late-season planting of sorghum is expected to be minimal because of unfavorable seasonal conditions during the past several weeks. January's high temperatures further stressed the crop, which was already struggling from a lack of soil moisture. These conditions are expected to lower yield potential. In Queensland, heat and dryness have accelerated crop maturity and harvest began two weeks early. Queensland produces about one-third of Australia's sorghum, with New South Wales accounting for the remainder.

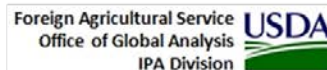


Sorghum is sown from September through February. Harvest of the early-planted crop begins in February and continues through June. (For more information, please contact James.Crutchfield@fas.usda.gov.)

Australia Cotton: Production Estimate Increased

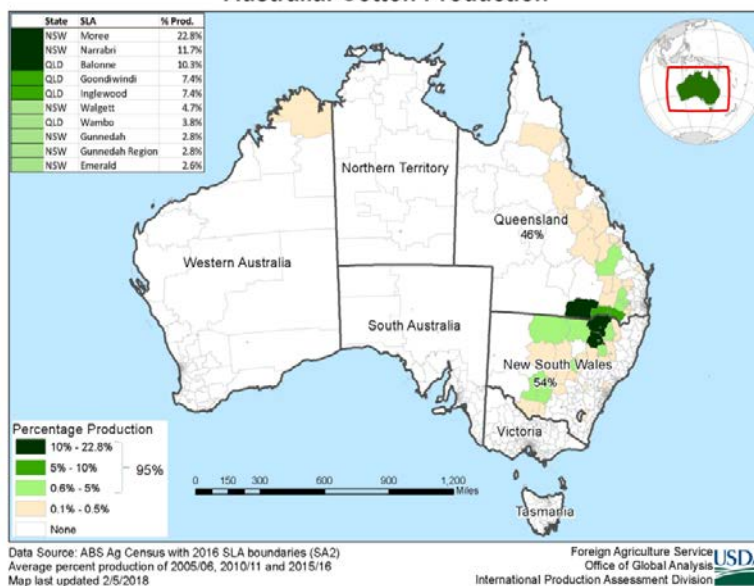


Source: Cotton Australia, Cotton Growers Publication, FAS



The 2018/19 Australia cotton crop is estimated at 2.6 million 480-pound bales (0.566 million metric tons), up 0.1 million bales from December but down 2.1 million or 45 percent from last year. Harvested area is estimated at 0.3 million hectares, unchanged from December, but down 43 percent from last year. Yield is forecast at 1,887 kilograms per hectare, 2 percent below the 5-year average. Yield is expected to increase from last year because of an estimated decrease in the share of the area sown to lower-yielding dryland cotton.

Australia: Cotton Production

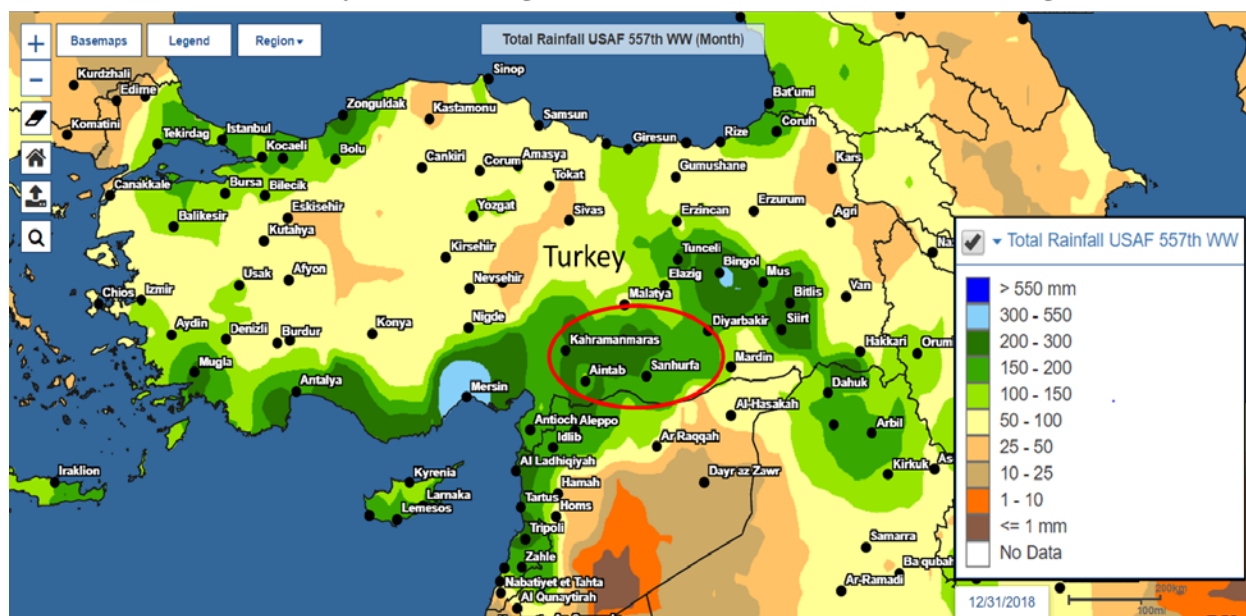


Irrigated cotton yields are substantially higher than dryland yields, and the difference widens in low-rainfall years. On average, about 90 percent of Australia's total cotton production comes from irrigated areas. Dryland planting tends to vary with the

seasonal weather forecast and prices at sowing. A notable factor this season is the increase in cotton area in southern New South Wales. Early harvest results indicate irrigated yields are better than expected. Sorghum and cotton are the two dominant summer crops in eastern Australia. Cotton sowing commences in October and harvest begins in April. *(For more information, please contact James.Crutchfield@fas.usda.gov.)*

Turkey Cotton: End of Season Rain Reduces Harvest Estimate

December Precipitation Resulting in Excessive Moisture Conditions in the GAP Region



Source: <https://geo.fas.usda.gov/GADAS/index.html>; USAF 557th WW



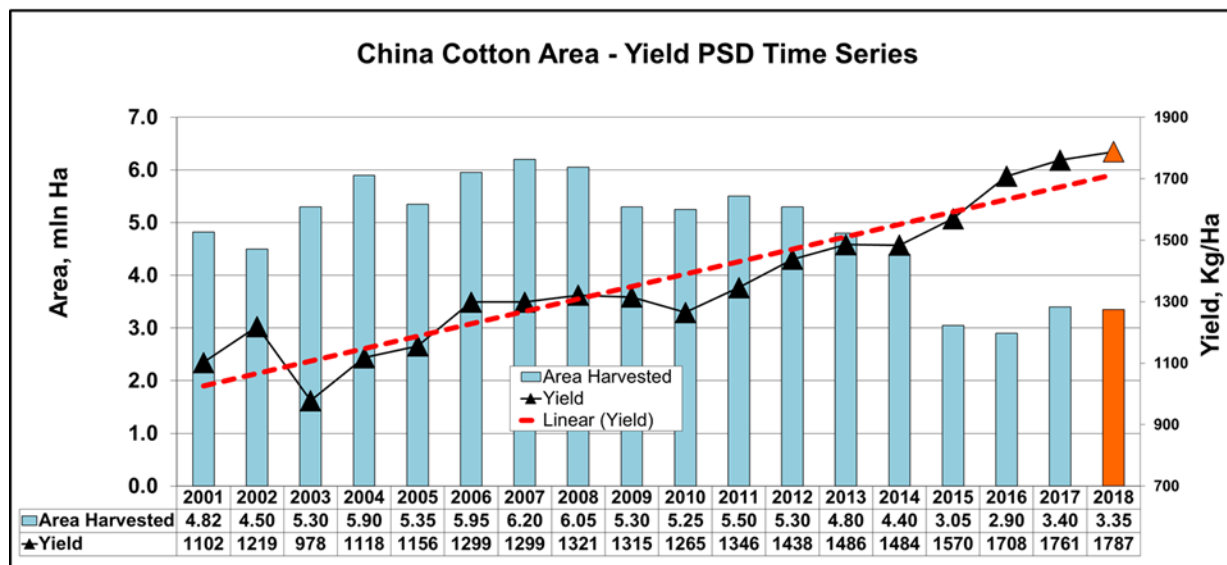
USDA estimates 2018/19 Turkey cotton production at 3.7 million 480-pound bales, down 0.6 million from December, and down 8 percent from last year's record. Harvested area is estimated at 520,000 hectares, unchanged from December, up 11 percent from last year and up 30 percent from the 5-year average. Yield is estimated at 1,549 kilograms per hectare, down 14 percent from December. Planting began with ample soil moisture, and in some areas excessive rainfall necessitated replanting. Weather was favorable with good growing conditions except for isolated areas of excessive rainfall at harvest in the Aegean and GAP (Southeastern Anatolia) regions. Harvest was complete in December. *(For more information, please contact William.Baker@fas.usda.gov.)*

China Cotton: Production Increased Due to Record Yield

USDA estimates China's 2018/19 cotton production at 27.5 million 480-pound bales (5.99 million metric tons), up 1.9 percent from December, unchanged from last year, and up 1.9 percent from the 5-year average. Area is estimated at 3.35 million hectares, unchanged from the previous estimate, but down 1.5 percent from last year. Yield is estimated at a record 1,787 kilograms per hectare (kg/ha), up 1.8 percent from the previous estimate and up 1.5 percent from last year's record of 1,761 kg/ha. The projected yield is slightly above the long-term trend due to an increased share of cotton planted in Xinjiang province where yield is nearly twice the national average. The major production regions are in Xinjiang, Shandong, Hebei, and Jiangsu provinces.

The 2018/19 season was characterized by favorable weather and soil moisture across the major cotton growing regions, facilitating rapid planting and favorable crop establishment. For 2017/18 and 2018/19, Xinjiang province produced nearly 78 percent of the total national cotton production.

**China's 2018/19 Cotton Yields Predicted above the Long-term Trendline
Mainly due to area increase in high productivity province of Xinjiang**



USDA Foreign Agricultural Service
Office of Global Analysis
IPA Division

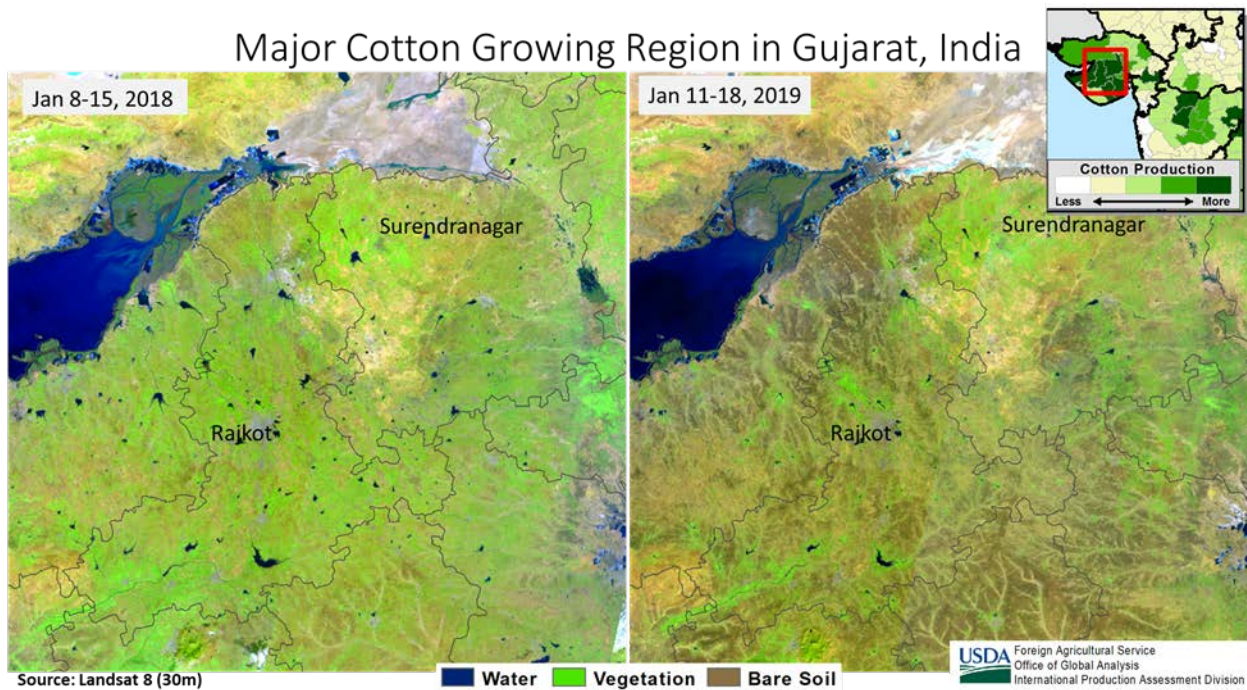
Cotton harvest was completed at the end of October; harvesting typically starts in August and continues through October. According to most industry sources and the China National Cotton Exchange (CNCE) ginning is almost complete. The reports indicate that Xinjiang has ginned over 5 million tons at the end of January: 2 percent more than the same period last year. Additional data indicate that almost 99 percent of the ginned volumes have been inspected. The inspection data and ginning volumes reported so far provides strong and reliable indicators of overall production. *(For more information, please contact Dath.Mita@fas.usda.gov.)*

India Cotton: Weak 2018 Southwest Monsoon Results in Lower Cotton Production

USDA estimates 2018/19 India cotton production at 27.0 million 480-pound bales, down nearly 7 percent from 2017/18. The area is estimated at 12.3 million hectares, down almost 2 percent from last year. Yield is estimated at 480 kilograms per hectare, down slightly from December and down 5 percent from last year. The yield adjustment is due to the rainfall deficit and pest infestation in the major cotton producing areas of Gujarat and Maharashtra.

The month-to-month change is due to lower market arrivals and lower yields. Lower arrivals indicate reduced cotton production. The below -average monsoon rainfall coupled with pest infestation truncated India's cotton harvesting. After the first picking, trade sources reported farmers in non-irrigated areas abandoning crops in Gujarat in November. The Gujarat Ministry

of Agriculture reported pink bollworm infestations in the irrigated areas of northern Saurashtra. Landsat 8 satellite imagery shows more bare soils in the major cotton areas of Gujarat than last



year which likely signals an end to cotton harvesting.

Cotton is grown only in the *kharif* season from May to October, but harvest can continue into February. (For more information, please contact Arnella.Trent@fas.usda.gov.)



World Agricultural Production
U.S. Department of Agriculture
 Foreign Agricultural Service / Office of Global Analysis
 International Production Assessment Division (IPAD)
 Ag Box 1051, Room 4630, South Building
 Washington, DC 20250-1051

<https://ipad.fas.usda.gov/>

Telephone: (202) 720-1662 Fax: (202) 720-1158

This report uses information from the Foreign Agricultural Service’s (FAS) global network of agricultural attachés and counselors, official statistics of foreign governments and other foreign source materials, and the analysis of economic data and satellite imagery. Estimates of foreign area, yield, and production are from the International Production Assessment Division, FAS, and are reviewed by USDA’s Inter-Agency Commodity Estimates Committee. Estimates of U.S. area, yield, and production are from USDA’s National Agricultural Statistics Service. Numbers within the report may not add to totals because of rounding. This report reflects official USDA estimates released in the World Agricultural Supply and Demand Estimates (WASDE-584), February 8, 2019.

Printed copies are available from the National Technical Information Service. Download an order form at http://www.ntis.gov/products/specialty/usda/fas_a-g.asp, or call NTIS at 1-800-363-2068.

The FAS International Production Assessment Division prepared this report. The next issue of World Agricultural Production will be released after 12:00 p.m. Eastern Time, March 8, 2019.

Conversion Table

Metric tons to bushels

Wheat, soybeans	=	MT * 36.7437
Corn, sorghum, rye	=	MT * 39.36825
Barley	=	MT * 45.929625
Oats	=	MT * 68.894438

Metric tons to 480-lb bales

Cotton	=	MT * 4.592917
--------	---	---------------

Metric tons to hundredweight

Rice	=	MT * 22.04622
------	---	---------------

Area & weight

1 hectare	=	2.471044 acres
1 kilogram	=	2.204622 pounds



For further information, contact:
U.S. Department of Agriculture
Foreign Agricultural Service
Office of Global Analysis
International Production Assessment Division
Ag Box 1051, Room 4630, South Building
Washington, DC 20250-1051

Telephone: (202) 720-1662

Fax: (202) 720-1158

GENERAL INFORMATION

Director	Ronald Frantz	202-720-4056	ronald.frantz@fas.usda.gov
Deputy Director	Robert Tetrault	202-720-1071	robert.tetrault@fas.usda.gov
Administrative Assistant	Vacant		
USDA Remote Sensing Advisor	Glenn Bethel	202-720-1280	glenn.bethel@fas.usda.gov
Sr. Analyst/Technical Lead	Curt Reynolds, Ph.D.	202-690-0134	curt.reynolds@fas.usda.gov
Sr. Analyst/ Satellite Imagery	Dath Mita, Ph.D.	202-720-7339	dath.mita@fas.usda.gov
Archives Manager/Technical Lead			
Sr. Analyst/ Global Special	Jim Crutchfield	202-690-0135	james.crutchfield@fas.usda.gov
Projects Manager/Technical Lead			
Sr. Analyst/Technical Lead	Vacant		
GIS Mapping/Imagery Analyst	Vacant		
WAP Coordinator	Katie McGaughey	202-720-9210	katie.mcgaughey@fas.usda.gov

COUNTRY- AND REGION-SPECIFIC INFORMATION

South America, Argentina, Venezuela, and Colombia	Denise McWilliams, Ph.D.	202-720-0107	denise.mcwilliams@fas.usda.gov
Western and Central Europe, and North Africa	Bryan Purcell	202-690-0138	bryan.purcell@fas.usda.gov
Russia, Ukraine, Kazakhstan	Vacant		
South Asia, Sri Lanka	Arnella Trent	202-720-0881	arnella.trent@fas.usda.gov
Bangladesh, India, and Nepal			
East Asia, China, and Japan	Dath Mita, Ph.D.	202-720-7339	dath.mita@fas.usda.gov
Sub-Saharan Africa,	Curt Reynolds, Ph.D.	202-690-0134	curt.reynolds@fas.usda.gov
Nigeria and South Africa			
S.E. Asia, Indonesia, Thailand, Malaysia, Cambodia and Vietnam	Justin Jenkins	202-720-0419	justin.jenkins@fas.usda.gov
Central America, Mexico, and Western United States	Vacant		
Australia, New Zealand, Pakistan	Jim Crutchfield	202-690-0135	james.crutchfield@fas.usda.gov
Papua New Guinea and South Pacific Islands			
Middle East, Central Asia, Afghanistan	Bill Baker, Ph.D.	202-260-8109	william.baker@fas.usda.gov
Iraq, Iran, and Syria			
Canada, Caribbean,	Katie McGaughey	202-720-9210	katie.mcgaughey@fas.usda.gov
Eastern United States			
Brazil	Maria Anulacion	202-720-6878	maria.anulacion@fas.usda.gov



The Foreign Agricultural Service (FAS) updates its production, supply and distribution (PSD) database for cotton, oilseeds, and grains at 12:00 p.m. on the day the *World Agricultural Supply and Demand Estimates* (WASDE) report is released. This circular is released by 12:15 p.m.

FAS Reports and Databases:

Current *World Market and Trade and World Agricultural Production* Reports:

<http://apps.fas.usda.gov/psdonline/psdDataPublications.aspx>

Archives *World Market and Trade and World Agricultural Production* Reports:

<http://usda.mannlib.cornell.edu/MannUsda/viewTaxonomy.do?taxonomyID=7>

Production, Supply and Distribution Database (PSD Online):

<http://apps.fas.usda.gov/psdonline/psdHome.aspx>

EU Countries Area & Production Estimates

<http://apps.fas.usda.gov/psdonline/psdDownload.aspx>

Global Agricultural Trade System (U.S. Exports and Imports):

<http://apps.fas.usda.gov/gats/default.aspx>

Export Sales Report:

<http://apps.fas.usda.gov/esrquery/>

Global Agricultural Information Network (Agricultural Attaché Reports):

<http://gain.fas.usda.gov/Pages/Default.aspx>

Other USDA Reports:

World Agricultural Supply and Demand Estimates (WASDE):

<http://www.usda.gov/oce/commodity/wasde/>

Economic Research Service:

<http://www.ers.usda.gov/topics/crops>

National Agricultural Statistics Service:

<http://www.nass.usda.gov/Publications/>

Table 01 World Crop Production Summary

Million Metric Tons

Commodity	World -	Total Foreign	North America			Former Soviet		Europea n	Asia (WAP)					South America		Selected Other			All Others
			United States	Canada -	Mexico -	Russia -	Ukraine -		China -	India -	Indo-nesia	Paki- stan	Thai- land	Argen- tina	Brazil -	Aus- tralia	South Africa	Turkey -	
---Million metric tons---																			
Wheat																			
2016/17	756.5	693.7	62.8	32.1	3.9	72.5	26.8	nr	133.3	87.0	0.0	25.6	0.0	18.4	6.7	31.8	1.9	17.3	236.3
2017/18 prel.	763.2	715.8	47.4	30.0	3.5	85.0	27.0	nr	134.3	98.5	0.0	26.7	0.0	18.5	4.3	21.3	1.5	21.0	244.2
2018/19 proj.																			
Dec	733.4	682.1	51.3	31.8	3.0	70.0	25.0	nr	132.5	99.7	0.0	25.5	0.0	19.5	4.8	17.0	1.9	19.0	232.5
Feb	734.7	683.5	51.3	31.8	3.0	71.6	25.0	nr	131.4	99.7	0.0	25.5	0.0	19.2	5.4	17.0	1.8	19.0	233.0
Coarse Grains																			
2016/17	1,413.7	1,011.1	402.6	26.6	33.3	40.8	39.2	nr	270.9	43.5	10.9	6.6	5.3	48.6	101.6	17.3	18.1	10.8	337.7
2017/18 prel.	1,356.8	972.5	384.4	26.2	33.1	41.7	34.1	nr	266.6	47.0	11.4	6.2	5.1	39.3	85.1	11.9	14.0	12.3	338.6
2018/19 proj.																			
Dec	1,373.6	988.5	385.1	26.2	31.7	34.7	43.7	nr	263.8	42.3	11.9	6.8	5.4	50.4	97.4	10.8	12.6	13.5	337.4
Feb	1,372.1	992.2	379.9	26.2	31.3	34.7	44.0	nr	265.1	42.3	11.9	6.8	5.4	53.9	97.4	10.6	12.1	13.7	336.9
Rice, Milled																			
2016/17	490.9	483.8	7.1	0.0	0.2	0.7	0.0	nr	147.8	109.7	36.9	6.8	19.2	0.9	8.4	0.6	0.0	0.5	152.2
2017/18 prel.	495.1	489.4	5.7	0.0	0.2	0.6	0.0	nr	148.9	112.9	37.0	7.5	20.4	0.9	8.2	0.5	0.0	0.5	151.9
2018/19 proj.																			
Dec	491.1	484.2	6.9	0.0	0.2	0.7	0.0	nr	143.6	111.0	37.3	7.4	20.7	0.8	8.2	0.1	0.0	0.5	153.7
Feb	495.9	488.7	7.1	0.0	0.2	0.7	0.0	nr	148.5	111.0	37.3	7.4	20.7	0.8	7.8	0.1	0.0	0.5	153.8
Total Grains																			
2016/17	2,661.2	2,188.6	472.6	58.8	37.3	114.0	66.1	nr	552.0	240.2	47.8	39.1	24.5	67.8	116.7	49.7	20.0	28.5	726.3
2017/18 prel.	2,615.1	2,177.7	437.4	56.2	36.7	127.3	61.1	nr	549.8	258.4	48.4	40.3	25.4	58.7	97.5	33.7	15.5	33.8	734.7
2018/19 proj.																			
Dec	2,598.2	2,154.8	443.3	58.0	34.9	105.4	68.7	nr	539.9	253.0	49.2	39.7	26.1	70.6	110.4	28.0	14.5	33.0	723.5
Feb	2,602.7	2,164.4	438.3	58.0	34.5	106.9	69.0	nr	545.1	253.0	49.2	39.7	26.1	73.9	110.6	27.8	13.9	33.2	723.6
Oilseeds																			
2016/17	572.8	445.9	126.9	26.2	1.1	15.0	20.7	nr	54.9	37.1	12.8	3.7	0.9	60.2	117.6	5.7	2.3	2.8	85.0
2017/18 prel.	575.7	444.3	131.5	29.1	1.3	15.5	19.8	nr	59.5	34.8	13.6	4.0	1.0	42.5	124.6	5.3	2.5	3.2	87.7
2018/19 proj.																			
Dec	600.5	465.0	135.5	28.5	1.3	17.4	22.1	nr	59.7	34.5	13.9	3.6	1.0	60.4	126.4	3.2	2.5	3.5	87.0
Feb	593.3	459.3	134.0	28.5	1.3	18.5	22.3	nr	59.8	34.3	13.9	3.6	1.0	60.0	121.5	3.2	2.0	3.4	86.2
Cotton																			
2016/17	106.7	89.5	17.2	0.0	0.8	0.0	0.0	1.3	22.8	27.0	0.0	7.7	0.0	0.8	7.0	4.1	0.1	3.2	14.9
2017/18 prel.	123.7	102.8	20.9	0.0	1.6	0.0	0.0	1.5	27.5	29.0	0.0	8.2	0.0	0.8	9.2	4.7	0.2	4.0	16.0
2018/19 proj.																			
Dec	118.7	100.2	18.6	0.0	1.7	0.0	0.0	1.7	27.0	27.5	0.0	7.4	0.0	1.2	11.0	2.5	0.2	4.3	15.7
Feb	118.5	100.1	18.4	0.0	1.7	0.0	0.0	1.7	27.5	27.0	0.0	7.5	0.0	1.2	11.4	2.6	0.2	3.7	15.6

1/ Includes wheat, coarse grains, and rice (milled) shown above.

Table 02 Wheat Area, Yield, and Production

Country / Region	Area (Million hectares)				Yield (Metric tons per hectare)				Production (Million metric tons)				Change in Production			
	2016/17	Prel.	2018/19 Proj.		2016/17	Prel.	2018/19 Proj.		2016/17	Prel.	2018/19 Proj.		From last month		From last year	
		2017/18	Dec	Feb		2017/18	Dec	Feb		2017/18	Dec	Feb	MMT	Percent	MMT	Percent
World	222.71	220.06	216.35	216.78	3.40	3.47	3.39	3.39	756.51	763.18	733.41	734.75	1.33	0.18	-28.43	-3.73
United States	17.75	15.20	16.03	16.03	3.54	3.12	3.20	3.20	62.83	47.38	51.29	51.29	0.00	0.00	3.91	8.25
Total Foreign	204.97	204.86	200.32	200.76	3.38	3.49	3.41	3.40	693.68	715.80	682.13	683.46	1.33	0.20	-32.34	-4.52
European Union - 28	27.23	26.08	25.55	25.55	5.34	5.80	5.39	5.39	145.37	151.26	137.60	137.60	0.00	0.00	-13.66	-9.03
China	24.69	24.51	24.21	24.27	5.40	5.48	5.47	5.42	133.27	134.33	132.50	131.43	-1.07	-0.81	-2.90	-2.16
South Asia																
India	30.22	30.79	30.00	30.00	2.88	3.20	3.32	3.32	87.00	98.51	99.70	99.70	0.00	0.00	1.19	1.21
Pakistan	9.22	8.97	8.75	8.75	2.78	2.97	2.91	2.91	25.63	26.67	25.50	25.50	0.00	0.00	-1.17	-4.40
Afghanistan	2.55	2.55	2.50	2.50	2.00	1.96	1.60	1.60	5.10	5.00	4.00	4.00	0.00	0.00	-1.00	-20.00
Nepal	0.76	0.77	0.76	0.76	2.41	2.31	2.35	2.35	1.83	1.78	1.79	1.79	0.00	0.00	0.01	0.34
Former Soviet Union - 12																
Russia	27.00	27.34	26.00	26.20	2.69	3.11	2.69	2.73	72.53	84.99	70.00	71.60	1.60	2.29	-13.39	-15.76
Russia Winter	13.64	14.64	14.35	14.35	3.78	4.17	3.55	3.55	51.54	60.99	51.00	51.00	0.00	0.00	-9.99	-16.38
Russia Spring	13.37	12.70	11.65	11.85	1.57	1.89	1.63	1.74	20.99	24.01	19.00	20.60	1.60	8.42	-3.41	-14.18
Ukraine	6.46	6.64	6.90	6.90	4.15	4.06	3.62	3.62	26.79	26.98	25.00	25.00	0.00	0.00	-1.98	-7.34
Kazakhstan	12.37	11.91	11.30	11.30	1.21	1.24	1.33	1.33	14.99	14.80	15.00	15.00	0.00	0.00	0.20	1.34
Uzbekistan	1.40	1.40	1.40	1.40	4.96	4.93	4.29	4.29	6.94	6.90	6.00	6.00	0.00	0.00	-0.90	-13.04
Belarus	0.71	0.72	0.70	0.70	3.29	3.65	3.71	3.71	2.34	2.62	2.60	2.60	0.00	0.00	-0.02	-0.76
Canada	8.98	8.98	9.90	9.90	3.58	3.34	3.21	3.21	32.14	29.98	31.80	31.80	0.00	0.00	1.82	6.06
South America																
Argentina	5.56	5.80	6.00	6.10	3.31	3.19	3.25	3.15	18.40	18.50	19.50	19.20	-0.30	-1.54	0.70	3.78
Brazil	2.12	1.92	2.04	2.04	3.17	2.23	2.35	2.66	6.73	4.26	4.80	5.43	0.63	13.08	1.16	27.30
Uruguay	0.22	0.19	0.20	0.20	3.52	2.28	3.50	3.50	0.76	0.44	0.70	0.70	0.00	0.00	0.26	59.09
Australia	12.19	12.25	10.00	10.00	2.61	1.74	1.70	1.70	31.82	21.30	17.00	17.00	0.00	0.00	-4.30	-20.19
Africa																
Egypt	1.26	1.32	1.32	1.32	6.43	6.40	6.40	6.40	8.10	8.45	8.45	8.45	0.00	0.00	0.00	0.00
Morocco	2.41	3.32	2.85	2.85	1.13	2.14	2.58	2.58	2.73	7.09	7.34	7.34	0.00	0.00	0.25	3.50
Ethiopia	1.70	1.70	1.70	1.70	2.68	2.65	2.65	2.65	4.54	4.50	4.50	4.50	0.00	0.00	0.00	0.00
Algeria	1.30	1.60	2.07	2.07	1.54	1.50	1.90	1.90	2.00	2.40	3.94	3.94	0.00	0.00	1.54	64.17
Middle East																
Turkey	7.82	7.80	7.62	7.62	2.21	2.69	2.50	2.50	17.25	21.00	19.00	19.00	0.00	0.00	-2.00	-9.52
Iran	6.70	6.70	6.70	6.70	2.16	2.09	2.16	2.16	14.50	14.00	14.50	14.50	0.00	0.00	0.50	3.57
Iraq	2.35	2.23	2.30	2.30	1.80	1.81	1.74	1.74	4.23	4.03	4.00	4.00	0.00	0.00	-0.03	-0.62
Syria	1.10	1.10	1.10	1.10	2.18	2.00	1.82	1.82	2.40	2.20	2.00	2.00	0.00	0.00	-0.20	-9.09
Mexico	0.72	0.67	0.54	0.54	5.34	5.24	5.56	5.56	3.87	3.49	3.00	3.00	0.00	0.00	-0.49	-14.14
Serbia	0.61	0.54	0.68	0.68	4.92	4.26	4.74	4.74	3.00	2.30	3.20	3.20	0.00	0.00	0.90	39.13
Others	7.31	7.06	7.24	7.32	2.66	2.55	2.58	2.62	19.43	17.99	18.71	19.18	0.48	2.54	1.20	6.64

Table 03 Total Coarse Grain Area, Yield, and Production

Country / Region	Area (Million hectares)				Yield (Metric tons per hectare)				Production (Million metric tons)				Change in Production			
	2016/17	Prel.	2018/19 Proj.		2016/17	Prel.	2018/19 Proj.		2016/17	Prel.	2018/19 Proj.		From last month		From last year	
		2017/18	Dec	Feb		2017/18	Dec	Feb		2017/18	Dec	Feb	MMT	Percent	MMT	Percent
World	337.19	326.45	325.23	326.06	4.19	4.16	4.22	4.21	1,413.71	1,356.84	1,373.61	1,372.14	-1.48	-0.11	15.30	1.13
United States	39.20	36.76	36.41	36.39	10.27	10.46	10.58	10.44	402.61	384.39	385.12	379.92	-5.20	-1.35	-4.47	-1.16
Total Foreign	297.99	289.69	288.82	289.67	3.39	3.36	3.42	3.43	1,011.10	972.45	988.50	992.22	3.72	0.38	19.76	2.03
China	46.29	44.58	43.76	44.38	5.85	5.98	6.03	5.97	270.93	266.57	263.81	265.14	1.33	0.50	-1.44	-0.54
European Union	29.49	29.13	29.14	29.14	5.18	5.24	5.05	5.04	152.83	152.49	147.19	146.90	-0.29	-0.20	-5.59	-3.67
South America																
Brazil	18.62	17.83	18.68	18.68	5.46	4.77	5.22	5.22	101.58	85.06	97.42	97.42	0.00	0.00	12.36	14.54
Argentina	6.84	7.10	7.20	7.67	7.11	5.54	6.99	7.03	48.57	39.32	50.35	53.92	3.57	7.09	14.60	37.14
Former Soviet Union - 12																
Russia	15.14	14.74	14.03	13.91	2.69	2.83	2.48	2.49	40.77	41.71	34.73	34.67	-0.06	-0.17	-7.05	-16.89
Ukraine	7.82	7.59	7.44	7.49	5.01	4.49	5.87	5.88	39.22	34.07	43.70	43.99	0.30	0.68	9.92	29.12
Kazakhstan	2.33	2.49	2.96	2.96	1.90	1.79	1.84	1.84	4.43	4.45	5.46	5.46	0.00	0.00	1.00	22.53
Belarus	0.96	1.00	1.05	1.05	3.16	3.30	3.34	3.34	3.03	3.29	3.51	3.51	0.00	0.00	0.22	6.69
Africa																
Nigeria	14.10	13.80	13.80	13.80	1.34	1.36	1.40	1.40	18.82	18.80	19.30	19.30	0.00	0.00	0.50	2.66
South Africa	3.18	2.80	2.63	2.62	5.69	4.99	4.79	4.62	18.12	14.00	12.61	12.08	-0.53	-4.16	-1.92	-13.69
Tanzania	5.31	5.35	5.35	5.35	1.11	1.21	1.22	1.22	5.90	6.50	6.55	6.55	0.00	0.00	0.05	0.77
Burkina	3.83	3.85	3.85	3.85	1.09	0.97	1.14	1.14	4.17	3.73	4.40	4.40	0.00	0.00	0.67	18.06
Ethiopia	5.43	5.69	5.71	5.71	2.78	2.45	2.48	2.48	15.09	13.96	14.18	14.18	0.00	0.00	0.22	1.58
Egypt	0.97	1.02	1.07	1.07	7.05	7.09	7.14	7.14	6.86	7.26	7.66	7.66	0.00	0.00	0.40	5.51
Mali	4.63	3.95	3.95	3.95	1.30	1.71	1.34	1.34	6.01	6.76	5.30	5.30	0.00	0.00	-1.46	-21.54
India	25.18	23.81	23.15	23.15	1.73	1.97	1.83	1.83	43.47	46.97	42.25	42.25	0.00	0.00	-4.72	-10.05
Southeast Asia																
Indonesia	3.40	3.45	3.50	3.50	3.21	3.30	3.40	3.40	10.90	11.40	11.90	11.90	0.00	0.00	0.50	4.39
Philippines	2.69	2.60	2.60	2.60	3.01	3.08	3.15	3.15	8.09	7.98	8.20	8.20	0.00	0.00	0.22	2.76
Vietnam	1.10	1.05	0.85	0.85	4.60	4.65	4.65	4.65	5.06	4.88	3.95	3.95	0.00	0.00	-0.93	-19.06
Thailand	1.20	1.15	1.23	1.23	4.39	4.39	4.36	4.36	5.25	5.05	5.35	5.35	0.00	0.00	0.30	5.94
Mexico	9.34	9.07	8.96	8.86	3.56	3.65	3.54	3.53	33.26	33.07	31.69	31.29	-0.40	-1.26	-1.78	-5.39
Canada	4.82	4.74	5.00	5.00	5.52	5.54	5.25	5.25	26.62	26.24	26.24	26.24	0.00	0.00	0.00	-0.01
Australia	6.38	5.31	5.32	5.32	2.71	2.24	2.04	2.00	17.27	11.91	10.85	10.65	-0.20	-1.84	-1.26	-10.60
Middle East																
Turkey	4.19	4.15	4.34	4.34	2.57	2.96	3.10	3.14	10.78	12.27	13.45	13.65	0.20	1.49	1.38	11.25
Iran	1.75	1.79	1.79	1.79	2.24	2.41	2.41	2.41	3.92	4.32	4.32	4.32	0.00	0.00	0.00	0.00
Others	73.01	71.66	71.47	71.41	1.51	1.54	1.60	1.60	110.17	110.39	114.15	113.94	-0.21	-0.18	3.55	3.21

World and Selected Countries and Regions; Coarse Grain includes: Barley, Corn, Millet, Mixed Grains, Oats, Rye and Sorghum

Table 04 Corn Area, Yield, and Production

Country / Region	Area (Million hectares)				Yield (Metric tons per hectare)				Production (Million metric tons)				Change in Production			
	2016/17	Prel.	2018/19 Proj.		2016/17	Prel.	2018/19 Proj.		2016/17	Prel.	2018/19 Proj.		From last month		From last year	
		2017/18	Dec	Feb		2017/18	Dec	Feb		2017/18	Dec	Feb	MMT	Percent	MMT	Percent
World	194.34	190.55	188.46	189.31	5.78	5.64	5.84	5.81	1,122.41	1,075.61	1,099.91	1,099.61	-0.30	-0.03	24.00	2.23
United States	35.11	33.48	33.09	33.08	10.96	11.08	11.23	11.07	384.78	371.10	371.52	366.29	-5.23	-1.41	-4.81	-1.30
Total Foreign	159.24	157.07	155.37	156.23	4.63	4.49	4.69	4.69	737.63	704.52	728.40	733.32	4.93	0.68	28.81	4.09
China	44.18	42.40	41.50	42.13	5.97	6.11	6.17	6.11	263.61	259.07	256.00	257.33	1.33	0.52	-1.74	-0.67
South America																
Brazil	17.60	16.60	17.50	17.50	5.60	4.94	5.40	5.40	98.50	82.00	94.50	94.50	0.00	0.00	12.50	15.24
Argentina	4.90	5.20	5.20	5.50	8.37	6.15	8.17	8.36	41.00	32.00	42.50	46.00	3.50	8.24	14.00	43.75
Bolivia	0.09	0.37	0.33	0.33	1.38	2.50	2.65	2.65	0.12	0.93	0.88	0.88	0.00	0.00	-0.05	-5.41
European Union	8.57	8.38	8.05	8.05	7.23	7.41	7.50	7.54	61.88	62.10	60.40	60.72	0.32	0.53	-1.38	-2.23
Africa																
South Africa	3.00	2.63	2.40	2.40	5.86	5.13	5.00	4.79	17.55	13.53	12.00	11.50	-0.50	-4.17	-2.03	-14.97
Nigeria	6.54	6.50	6.50	6.50	1.59	1.69	1.69	1.69	10.42	11.00	11.00	11.00	0.00	0.00	0.00	0.00
Ethiopia	2.14	2.23	2.25	2.25	3.42	3.14	3.16	3.16	7.30	7.00	7.10	7.10	0.00	0.00	0.10	1.43
Egypt	0.75	0.80	0.85	0.85	8.00	8.00	8.00	8.00	6.00	6.40	6.80	6.80	0.00	0.00	0.40	6.25
Tanzania	4.20	4.20	4.20	4.20	1.15	1.27	1.29	1.29	4.82	5.35	5.40	5.40	0.00	0.00	0.05	0.93
Malawi	1.67	1.70	1.70	1.70	1.42	2.04	1.65	1.65	2.37	3.46	2.80	2.80	0.00	0.00	-0.66	-19.17
Zambia	1.16	1.43	1.09	1.09	2.48	2.52	2.21	2.21	2.87	3.61	2.40	2.40	0.00	0.00	-1.21	-33.60
Kenya	2.34	2.10	2.20	2.20	1.43	1.40	1.82	1.82	3.34	2.95	4.00	4.00	0.00	0.00	1.05	35.59
Uganda	1.15	1.10	1.10	1.10	2.32	2.55	2.27	2.27	2.66	2.80	2.50	2.50	0.00	0.00	-0.30	-10.71
Zimbabwe	0.77	1.88	1.72	1.72	0.66	1.15	0.99	0.99	0.51	2.16	1.70	1.70	0.00	0.00	-0.46	-21.10
Former Soviet Union - 12																
Ukraine	4.24	4.43	4.50	4.55	6.60	5.44	7.78	7.80	27.97	24.12	35.00	35.50	0.50	1.43	11.39	47.21
Russia	2.78	2.70	2.35	2.35	5.51	4.90	4.79	4.79	15.31	13.23	11.25	11.25	0.00	0.00	-1.98	-14.96
South Asia																
India	9.63	9.22	9.20	9.20	2.69	3.12	2.83	2.83	25.90	28.72	26.00	26.00	0.00	0.00	-2.72	-9.47
Pakistan	1.35	1.23	1.32	1.32	4.55	4.63	4.77	4.77	6.13	5.70	6.30	6.30	0.00	0.00	0.60	10.51
Nepal	0.89	0.90	0.90	0.90	2.62	2.84	2.83	2.83	2.34	2.56	2.55	2.55	0.00	0.00	-0.01	-0.20
Southeast Asia																
Indonesia	3.40	3.45	3.50	3.50	3.21	3.30	3.40	3.40	10.90	11.40	11.90	11.90	0.00	0.00	0.50	4.39
Philippines	2.69	2.60	2.60	2.60	3.01	3.08	3.15	3.15	8.09	7.98	8.20	8.20	0.00	0.00	0.22	2.76
Vietnam	1.10	1.05	0.85	0.85	4.60	4.65	4.65	4.65	5.06	4.88	3.95	3.95	0.00	0.00	-0.93	-19.06
Thailand	1.17	1.12	1.20	1.20	4.45	4.45	4.42	4.42	5.20	5.00	5.30	5.30	0.00	0.00	0.30	6.00
Mexico	7.51	7.32	7.20	7.10	3.67	3.75	3.61	3.61	27.58	27.45	26.00	25.60	-0.40	-1.54	-1.85	-6.74
Canada	1.41	1.41	1.43	1.43	9.82	10.02	9.72	9.72	13.89	14.10	13.90	13.90	0.00	0.00	-0.20	-1.38
Turkey	0.57	0.53	0.53	0.53	9.65	10.00	10.38	10.75	5.50	5.30	5.50	5.70	0.20	3.64	0.40	7.55
Others	23.45	23.60	23.20	23.18	2.59	2.53	2.70	2.70	60.83	59.74	62.57	62.55	-0.02	-0.03	2.81	4.71

World and Selected Countries and Regions

Table 05 Barley Area, Yield, and Production

Country / Region	Area (Million hectares)				Yield (Metric tons per hectare)				Production (Million metric tons)				Change in Production			
	2016/17	Prel.	2018/19 Proj.		2016/17	Prel.	2018/19 Proj.		2016/17	Prel.	2018/19 Proj.		From last month		From last year	
		2017/18	Dec	Feb		2017/18	Dec	Feb		2017/18	Dec	Feb	MMT	Percent	MMT	Percent
World	49.28	48.09	49.30	49.51	2.98	3.00	2.85	2.84	147.06	144.19	140.72	140.60	-0.12	-0.09	-3.59	-2.49
United States	1.04	0.79	0.80	0.80	4.19	3.93	4.17	4.17	4.35	3.12	3.33	3.33	0.00	0.00	0.21	6.86
Total Foreign	48.24	47.30	48.50	48.71	2.96	2.98	2.83	2.82	142.70	141.07	137.39	137.27	-0.12	-0.09	-3.80	-2.70
European Union	12.31	12.09	12.45	12.45	4.86	4.87	4.57	4.53	59.87	58.84	56.95	56.34	-0.61	-1.07	-2.50	-4.24
Former Soviet Union - 12																
Russia	7.96	7.85	7.70	7.70	2.21	2.57	2.14	2.16	17.55	20.18	16.50	16.60	0.10	0.61	-3.58	-17.75
Ukraine	3.05	2.65	2.50	2.50	3.24	3.28	3.04	2.96	9.87	8.70	7.60	7.40	-0.20	-2.63	-1.30	-14.89
Kazakhstan	1.89	2.07	2.50	2.50	1.71	1.60	1.68	1.68	3.23	3.31	4.20	4.20	0.00	0.00	0.90	27.08
Belarus	0.45	0.45	0.50	0.50	2.78	3.14	3.40	3.40	1.25	1.42	1.70	1.70	0.00	0.00	0.28	19.72
Azerbaijan	0.36	0.32	0.35	0.35	2.69	2.55	2.49	2.49	0.95	0.82	0.87	0.87	0.00	0.00	0.06	6.75
Canada	2.27	2.11	2.40	2.40	3.90	3.73	3.50	3.50	8.84	7.89	8.40	8.40	0.00	0.00	0.51	6.45
Australia	4.83	3.90	3.80	3.80	2.79	2.28	1.92	1.92	13.51	8.90	7.30	7.30	0.00	0.00	-1.60	-17.98
Middle East																
Turkey	3.40	3.40	3.60	3.60	1.40	1.88	2.06	2.06	4.75	6.40	7.40	7.40	0.00	0.00	1.00	15.63
Iran	1.61	1.60	1.60	1.60	1.86	1.94	1.94	1.94	3.00	3.10	3.10	3.10	0.00	0.00	0.00	0.00
Iraq	1.20	1.07	1.00	1.00	1.29	1.24	1.00	1.00	1.55	1.33	1.00	1.00	0.00	0.00	-0.33	-24.53
Syria	0.88	0.80	0.80	0.80	0.82	0.97	0.50	0.50	0.72	0.78	0.40	0.40	0.00	0.00	-0.38	-48.52
Africa																
Ethiopia	0.96	1.20	1.20	1.20	2.11	1.75	1.81	1.81	2.03	2.10	2.17	2.17	0.00	0.00	0.07	3.33
Morocco	1.21	1.80	1.75	1.75	0.51	1.11	1.66	1.66	0.62	2.00	2.91	2.91	0.00	0.00	0.91	45.50
Algeria	0.90	0.76	1.03	1.03	1.11	1.27	1.90	1.90	1.00	0.97	1.95	1.95	0.00	0.00	0.98	101.45
Tunisia	0.28	0.36	0.34	0.34	1.34	1.31	1.31	1.31	0.38	0.47	0.45	0.45	0.00	0.00	-0.03	-5.32
South Africa	0.09	0.09	0.12	0.12	3.99	3.37	3.33	3.54	0.36	0.31	0.40	0.43	0.03	6.25	0.12	38.44
South America																
Argentina	0.87	0.94	1.00	1.20	3.79	4.00	4.00	3.75	3.30	3.74	4.00	4.50	0.50	12.50	0.76	20.32
Uruguay	0.19	0.15	0.17	0.17	3.57	2.52	4.00	3.64	0.68	0.39	0.66	0.60	-0.06	-9.09	0.22	55.84
Brazil	0.10	0.11	0.12	0.12	3.91	2.61	2.88	2.88	0.38	0.28	0.35	0.35	0.00	0.00	0.06	22.34
India	0.59	0.66	0.68	0.68	2.44	2.67	2.61	2.61	1.44	1.75	1.77	1.77	0.00	0.00	0.02	1.14
China	0.43	0.43	0.45	0.45	4.08	4.19	4.11	4.11	1.75	1.80	1.85	1.85	0.00	0.00	0.05	2.78
Mexico	0.33	0.36	0.36	0.36	2.96	2.81	2.78	2.78	0.98	1.00	1.00	1.00	0.00	0.00	0.00	-0.40
Afghanistan	0.22	0.25	0.25	0.25	1.83	1.60	1.40	1.40	0.40	0.40	0.35	0.35	0.00	0.00	-0.05	-12.50
Others	1.88	1.88	1.84	1.85	2.29	2.25	2.24	2.30	4.31	4.22	4.12	4.24	0.12	2.98	0.03	0.64

World and Selected Countries and Regions

Table 06 Oats Area, Yield, and Production

Country / Region	Area (Million hectares)				Yield (Metric tons per hectare)				Production (Million metric tons)				Change in Production			
	2016/17	Prel.	2018/19 Proj.		2016/17	Prel.	2018/19 Proj.		2016/17	Prel.	2018/19 Proj.		From last month		From last year	
		2017/18	Dec	Feb		2017/18	Dec	Feb		2017/18	Dec	Feb	MMT	Percent	MMT	Percent
World	9.67	9.51	9.45	9.33	2.50	2.46	2.40	2.38	24.17	23.41	22.71	22.22	-0.48	-2.13	-1.19	-5.07
United States	0.40	0.33	0.35	0.35	2.37	2.22	2.33	2.33	0.94	0.72	0.82	0.82	0.00	0.00	0.10	13.19
Total Foreign	9.28	9.19	9.10	8.98	2.51	2.47	2.41	2.38	23.23	22.69	21.89	21.41	-0.48	-2.21	-1.28	-5.65
European Union	2.57	2.68	2.67	2.67	3.13	3.01	3.02	3.02	8.04	8.07	8.05	8.05	0.00	0.00	-0.02	-0.27
Former Soviet Union - 12																
Russia	2.75	2.78	2.75	2.72	1.73	1.96	1.75	1.73	4.75	5.44	4.80	4.70	-0.10	-2.08	-0.74	-13.62
Ukraine	0.21	0.21	0.20	0.20	2.38	2.31	2.38	2.15	0.51	0.48	0.48	0.42	-0.06	-11.58	-0.06	-12.68
Belarus	0.15	0.15	0.16	0.16	2.67	3.33	2.88	2.88	0.39	0.50	0.46	0.46	0.00	0.00	-0.04	-8.00
Kazakhstan	0.21	0.21	0.25	0.25	1.60	1.34	1.39	1.39	0.34	0.29	0.34	0.34	0.00	0.00	0.06	19.30
Canada	0.93	1.05	1.00	1.00	3.49	3.55	3.45	3.45	3.23	3.73	3.45	3.45	0.00	0.00	-0.28	-7.58
South America																
Argentina	0.32	0.22	0.25	0.22	2.45	2.24	2.40	2.40	0.79	0.49	0.60	0.52	-0.08	-14.00	0.02	4.88
Brazil	0.29	0.34	0.35	0.35	2.84	1.86	2.18	2.18	0.83	0.63	0.77	0.77	0.00	0.00	0.14	21.45
Chile	0.14	0.11	0.14	0.09	5.20	5.29	5.00	5.00	0.71	0.57	0.68	0.43	-0.25	-36.30	-0.14	-24.69
Uruguay	0.03	0.03	0.02	0.02	1.58	1.52	1.58	1.58	0.04	0.04	0.04	0.04	0.00	0.00	0.00	0.00
Oceania																
Australia	1.03	0.74	0.64	0.64	2.20	1.51	1.41	1.41	2.27	1.12	0.90	0.90	0.00	0.00	-0.22	-19.64
New Zealand	0.01	0.01	0.01	0.01	5.38	5.67	5.33	5.33	0.04	0.03	0.03	0.03	0.00	0.00	0.00	-5.88
China	0.21	0.21	0.22	0.22	1.41	1.43	1.42	1.42	0.29	0.30	0.31	0.31	0.00	0.00	0.01	1.67
Africa																
Algeria	0.09	0.09	0.09	0.09	1.29	1.29	1.29	1.29	0.11	0.11	0.11	0.11	0.00	0.00	0.00	0.00
Morocco	0.05	0.05	0.05	0.05	1.44	1.44	1.40	1.40	0.07	0.07	0.06	0.06	0.00	0.00	0.00	-3.08
South Africa	0.04	0.03	0.03	0.03	1.60	1.83	1.83	1.83	0.06	0.06	0.06	0.06	0.00	0.00	0.00	0.00
Other Europe																
Norway	0.08	0.08	0.08	0.08	4.34	4.00	4.00	4.00	0.33	0.30	0.30	0.30	0.00	0.00	0.00	0.00
Serbia	0.03	0.03	0.03	0.03	2.17	2.17	2.17	2.17	0.07	0.07	0.07	0.07	0.00	0.00	0.00	0.00
Albania	0.01	0.01	0.01	0.01	2.08	2.08	2.08	2.08	0.03	0.03	0.03	0.03	0.00	0.00	0.00	0.00
Bosnia and Herzegovina	0.01	0.01	0.01	0.01	2.90	2.57	3.00	3.00	0.03	0.02	0.03	0.03	0.00	0.00	0.01	66.67
Turkey	0.10	0.11	0.10	0.10	2.27	2.21	2.30	2.30	0.23	0.25	0.23	0.23	0.00	0.00	-0.02	-8.00
Mexico	0.04	0.04	0.05	0.05	1.89	1.64	1.80	1.80	0.07	0.07	0.09	0.09	0.00	0.00	0.02	25.00
Others	0.02	0.01	0.01	0.01	1.93	1.86	1.79	1.79	0.03	0.03	0.03	0.03	0.00	0.00	0.00	-3.85

World and Selected Countries and Regions

Table 07 Rye Area, Yield, and Production

Country / Region	Area (Million hectares)				Yield (Metric tons per hectare)				Production (Million metric tons)				Change in Production						
	2016/17	Prel.		2018/19 Proj.		2016/17	Prel.		2018/19 Proj.		2016/17	Prel.		2018/19 Proj.		From last month		From last year	
		2017/18	Dec	Feb	2017/18		Dec	Feb	2017/18	Dec		Feb	MMT	Percent	MMT	Percent			
World	4.13	4.03	3.82	3.80	2.98	3.06	2.75	2.78	12.33	12.31	10.51	10.57	0.06	0.52	-1.74	-14.12			
United States	0.17	0.12	0.11	0.11	2.04	2.15	1.95	1.95	0.34	0.26	0.21	0.21	0.00	0.00	-0.05	-17.69			
Total Foreign	3.97	3.91	3.71	3.69	3.02	3.08	2.77	2.81	11.99	12.05	10.30	10.36	0.06	0.53	-1.69	-14.04			
European Union	1.92	1.94	2.00	2.00	3.89	3.82	3.30	3.30	7.44	7.41	6.60	6.60	0.00	0.00	-0.81	-10.94			
Former Soviet Union - 12																			
Russia	1.25	1.17	0.98	0.95	2.03	2.17	1.90	2.00	2.54	2.54	1.85	1.90	0.05	2.70	-0.64	-25.31			
Belarus	0.24	0.26	0.25	0.25	2.70	2.62	2.60	2.60	0.65	0.67	0.65	0.65	0.00	0.00	-0.02	-2.99			
Ukraine	0.15	0.17	0.15	0.15	2.72	2.97	2.76	2.76	0.39	0.51	0.40	0.40	0.00	0.00	-0.11	-21.57			
Kazakhstan	0.04	0.03	0.02	0.02	1.14	1.26	1.14	1.14	0.04	0.04	0.03	0.03	0.00	0.00	-0.01	-35.90			
Turkey	0.12	0.10	0.11	0.11	2.61	3.17	2.91	2.91	0.30	0.32	0.32	0.32	0.00	0.00	0.00	0.00			
Canada	0.14	0.10	0.08	0.08	3.11	3.39	2.97	2.97	0.44	0.34	0.24	0.24	0.00	0.00	-0.11	-31.29			
South America																			
Chile	0.00	0.00	0.00	0.00	5.00	5.00	5.00	5.00	0.01	0.01	0.01	0.01	0.00	0.00	0.00	0.00			
Argentina	0.04	0.05	0.05	0.05	1.93	1.91	2.11	2.08	0.08	0.09	0.10	0.10	0.01	5.26	0.01	16.28			
Other Europe																			
Bosnia and Herzegovina	0.00	0.00	0.00	0.00	3.25	3.67	3.67	3.67	0.01	0.01	0.01	0.01	0.00	0.00	0.00	0.00			
Switzerland	0.00	0.00	0.00	0.00	5.50	5.50	5.50	5.50	0.01	0.01	0.01	0.01	0.00	0.00	0.00	0.00			
Serbia	0.00	0.00	0.00	0.00	2.50	2.50	2.50	2.50	0.01	0.01	0.01	0.01	0.00	0.00	0.00	0.00			
Australia	0.04	0.04	0.04	0.04	0.63	0.65	0.65	0.65	0.03	0.03	0.03	0.03	0.00	0.00	0.00	0.00			
Others	0.03	0.04	0.04	0.04	1.30	1.72	1.72	1.72	0.04	0.06	0.06	0.06	0.00	0.00	0.00	0.00			

World and Selected Countries and Regions

Table 08 Sorghum Area, Yield, and Production

Country / Region	Area (Million hectares)				Yield (Metric tons per hectare)				Production (Million metric tons)				Change in Production			
	2016/17	Prel.	2018/19 Proj.		2016/17	Prel.	2018/19 Proj.		2016/17	Prel.	2018/19 Proj.		From last month		From last year	
		2017/18	Dec	Feb		2017/18	Dec	Feb		2017/18	Dec	Feb	MMT	Percent	MMT	Percent
World	44.29	40.12	41.34	41.31	1.43	1.44	1.43	1.41	63.37	57.72	58.91	58.40	-0.51	-0.87	0.68	1.18
United States	2.49	2.04	2.06	2.05	4.89	4.50	4.48	4.53	12.20	9.19	9.24	9.27	0.03	0.36	0.08	0.86
Total Foreign	41.80	38.08	39.28	39.26	1.22	1.27	1.26	1.25	51.17	48.53	49.68	49.13	-0.54	-1.10	0.60	1.24
Africa																
Nigeria	5.82	5.80	5.80	5.80	1.19	1.09	1.17	1.17	6.94	6.30	6.80	6.80	0.00	0.00	0.50	7.94
Ethiopia	1.88	1.82	1.82	1.82	2.52	2.23	2.25	2.25	4.75	4.05	4.10	4.10	0.00	0.00	0.05	1.23
Sudan	9.16	6.30	7.00	7.00	0.71	0.59	0.57	0.57	6.47	3.74	4.00	4.00	0.00	0.00	0.26	6.87
Burkina	1.73	1.67	1.80	1.80	0.96	0.82	1.00	1.00	1.66	1.37	1.80	1.80	0.00	0.00	0.43	31.77
Mali	1.56	1.35	1.35	1.35	0.89	1.26	0.96	0.96	1.39	1.71	1.30	1.30	0.00	0.00	-0.41	-23.75
Niger	3.61	3.70	3.70	3.70	0.50	0.53	0.46	0.46	1.81	1.94	1.70	1.70	0.00	0.00	-0.24	-12.55
Cameroon	0.86	0.85	0.85	0.85	1.56	1.65	1.65	1.65	1.34	1.40	1.40	1.40	0.00	0.00	0.00	0.00
Tanzania	0.78	0.80	0.80	0.80	0.97	1.00	1.00	1.00	0.76	0.80	0.80	0.80	0.00	0.00	0.00	0.00
Egypt	0.14	0.14	0.14	0.14	5.36	5.36	5.36	5.36	0.75	0.75	0.75	0.75	0.00	0.00	0.00	0.00
Uganda	0.40	0.35	0.35	0.35	0.79	0.94	0.97	0.97	0.32	0.33	0.34	0.34	0.00	0.00	0.01	3.03
Ghana	0.23	0.25	0.25	0.25	1.00	1.12	1.12	1.12	0.23	0.28	0.28	0.28	0.00	0.00	0.00	0.00
Mozambique	0.26	0.37	0.32	0.32	0.45	0.68	0.67	0.67	0.12	0.25	0.22	0.22	0.00	0.00	-0.04	-14.00
South Africa	0.04	0.03	0.06	0.05	3.62	3.79	2.50	2.22	0.15	0.11	0.15	0.10	-0.05	-33.33	-0.01	-9.09
Mexico	1.47	1.35	1.35	1.35	3.17	3.37	3.41	3.41	4.64	4.55	4.60	4.60	0.00	0.00	0.06	1.21
South America																
Argentina	0.70	0.70	0.70	0.70	4.86	4.29	4.50	4.00	3.40	3.00	3.15	2.80	-0.35	-11.11	-0.20	-6.67
Brazil	0.63	0.78	0.70	0.70	2.97	2.73	2.57	2.57	1.87	2.14	1.80	1.80	0.00	0.00	-0.34	-15.73
South Asia																
India	5.86	4.83	5.20	5.20	0.78	1.03	0.88	0.88	4.57	4.95	4.60	4.60	0.00	0.00	-0.35	-7.07
Pakistan	0.26	0.20	0.23	0.23	0.58	0.65	0.62	0.62	0.15	0.13	0.14	0.14	0.00	0.00	0.01	7.69
China	0.63	0.68	0.72	0.72	4.78	4.74	4.79	4.79	2.99	3.20	3.45	3.45	0.00	0.00	0.25	7.81
Australia	0.37	0.53	0.75	0.75	2.70	2.71	2.93	2.67	0.99	1.44	2.20	2.00	-0.20	-9.09	0.56	38.99
European Union	0.12	0.12	0.13	0.13	5.45	5.41	5.45	5.45	0.63	0.67	0.69	0.69	0.00	0.00	0.02	3.13
Others	5.32	5.47	5.27	5.27	0.99	0.99	1.03	1.04	5.26	5.43	5.41	5.47	0.06	1.04	0.04	0.64

World and Selected Countries and Regions

Table 09 Rice Area, Yield, and Production
World and Selected Countries and Regions

Country / Region	Area (Million hectares)				Yield (Metric tons per hectare)				Production (Million metric tons)				Change in Production			
	Prel.		2018/19 Proj.		Prel.		2018/19 Proj.		Prel.		2018/19 Proj.		From last month		From last year	
	2016/17	2017/18	Dec	Feb	2016/17	2017/18	Dec	Feb	2016/17	2017/18	Dec	Feb	MMT	Percent	MMT	Percent
World	162.35	162.60	162.75	162.76	4.51	4.55	4.51	4.55	490.94	495.07	491.14	495.87	4.73	0.96	0.80	0.16
United States	1.25	0.96	1.17	1.18	8.11	8.41	8.43	8.62	7.12	5.66	6.93	7.12	0.19	2.71	1.46	25.80
Total Foreign	161.10	161.64	161.58	161.58	4.49	4.52	4.48	4.52	483.82	489.41	484.21	488.75	4.54	0.94	-0.66	-0.14
East Asia																
China	30.75	30.75	30.06	30.19	6.87	6.92	6.82	7.03	147.77	148.87	143.58	148.49	4.91	3.42	-0.38	-0.26
Japan	1.57	1.56	1.56	1.56	6.94	6.87	6.78	6.78	7.93	7.79	7.70	7.70	0.00	0.00	-0.09	-1.12
Korea, South	0.78	0.76	0.74	0.74	7.18	7.01	6.99	6.99	4.20	3.97	3.87	3.87	0.00	0.00	-0.10	-2.62
Korea, North	0.47	0.48	0.50	0.50	5.49	5.09	4.92	4.92	1.67	1.57	1.60	1.60	0.00	0.00	0.03	1.72
South Asia																
India	43.99	43.79	44.00	44.00	3.74	3.87	3.78	3.78	109.70	112.91	111.00	111.00	0.00	0.00	-1.91	-1.69
Bangladesh	11.75	11.27	11.68	11.68	4.42	4.35	4.43	4.43	34.58	32.65	34.50	34.50	0.00	0.00	1.85	5.67
Pakistan	2.72	2.90	2.80	2.80	3.77	3.85	3.96	3.96	6.85	7.45	7.40	7.40	0.00	0.00	-0.05	-0.67
Nepal	1.50	1.49	1.50	1.50	3.48	3.34	3.53	3.53	3.48	3.31	3.53	3.53	0.00	0.00	0.22	6.65
Sri Lanka	0.69	0.77	0.90	0.90	4.36	4.30	4.30	4.30	2.03	2.25	2.63	2.63	0.00	0.00	0.38	17.04
Southeast Asia																
Indonesia	12.24	12.25	12.24	12.24	4.78	4.76	4.80	4.80	36.86	37.00	37.30	37.30	0.00	0.00	0.30	0.81
Vietnam	7.71	7.69	7.76	7.76	5.68	5.92	5.99	5.99	27.40	28.47	29.07	29.07	0.00	0.00	0.60	2.10
Thailand	10.25	10.68	10.96	10.96	2.84	2.89	2.86	2.86	19.20	20.37	20.70	20.70	0.00	0.00	0.33	1.62
Burma	7.03	7.10	7.10	7.10	2.81	2.90	2.89	2.89	12.65	13.20	13.12	13.12	0.00	0.00	-0.08	-0.61
Philippines	4.72	4.84	4.81	4.81	3.93	4.01	4.01	4.01	11.69	12.24	12.15	12.15	0.00	0.00	-0.09	-0.69
Cambodia	3.10	3.18	3.25	3.25	2.78	2.78	2.78	2.78	5.26	5.40	5.50	5.50	0.00	0.00	0.10	1.87
Laos	0.97	0.96	0.99	0.99	3.18	3.30	3.30	3.30	1.95	2.00	2.05	2.05	0.00	0.00	0.05	2.50
Malaysia	0.70	0.70	0.70	0.70	4.03	4.03	4.03	4.03	1.82	1.82	1.82	1.82	0.00	0.00	0.00	0.00
South America																
Brazil	1.98	1.97	1.96	1.85	6.22	6.12	6.12	6.16	8.38	8.21	8.16	7.75	-0.41	-5.00	-0.46	-5.56
Peru	0.42	0.42	0.41	0.41	7.54	7.20	7.35	7.35	2.19	2.10	2.10	2.10	0.00	0.00	0.00	0.14
Africa																
Egypt	0.85	0.76	0.46	0.46	8.18	8.18	8.78	8.78	4.80	4.30	2.80	2.80	0.00	0.00	-1.50	-34.88
Madagascar	1.48	1.43	1.50	1.50	2.59	2.18	2.87	2.87	2.44	1.98	2.75	2.75	0.00	0.00	0.77	38.71
Nigeria	3.17	3.60	3.60	3.60	2.21	2.06	2.11	2.11	4.41	4.66	4.79	4.79	0.00	0.00	0.13	2.70
European Union	0.44	0.43	0.42	0.42	6.83	6.69	6.89	6.89	2.09	2.00	1.99	1.99	0.00	0.00	-0.01	-0.30
Iran	0.63	0.63	0.63	0.63	4.03	4.16	4.12	4.12	1.66	1.72	1.70	1.70	0.00	0.00	-0.02	-0.93
Others	11.21	11.24	11.08	11.05	3.09	3.13	3.08	3.09	22.83	23.18	22.39	22.43	0.04	0.18	-0.74	-3.20

Yield is on a rough basis, before the milling process. Production is on a milled basis, after the milling process.

Table 10 Total Oilseed Area, Yield, and Production

World and Selected Countries and Regions

Country / Region	Area (Million hectares)				Yield (Metric tons per hectare)				Production (Million metric tons)				Change in Production			
	2016/17	Prel.	2018/19 Proj.		2016/17	Prel.	2018/19 Proj.		2016/17	Prel.	2018/19 Proj.		From last month		From last year	
		2017/18	Dec	Feb		2017/18	Dec	Feb		2017/18	Dec	Feb	MMT	Percent	MMT	Percent
World Total	--	--	--	--	--	--	--	--	572.85	575.74	600.47	593.26	-7.22	-1.20	17.52	3.04
Total Foreign	--	--	--	--	--	--	--	--	445.91	444.26	464.97	459.25	-5.72	-1.23	15.00	3.38
Oilseed, Copra	--	--	--	--	--	--	--	--	5.51	5.73	5.83	5.83	0.00	0.00	0.10	1.66
Oilseed, Palm Kernel	--	--	--	--	--	--	--	--	17.35	18.70	19.41	19.45	0.04	0.19	0.75	4.00
Major Oilseeds	234.57	244.90	247.68	245.58	2.34	2.25	2.32	2.31	549.99	551.31	575.23	567.98	-7.25	-1.26	16.67	3.02
United States	39.25	42.80	41.78	41.76	3.23	3.07	3.24	3.21	126.94	131.48	135.50	134.00	-1.50	-1.11	2.52	1.92
Foreign Oilseeds	195.32	202.10	205.89	203.82	2.17	2.08	2.14	2.13	423.04	419.82	439.73	433.98	-5.76	-1.31	14.16	3.37
South America	60.79	61.68	65.37	64.11	3.19	2.94	3.10	3.06	193.96	181.45	202.40	196.30	-6.10	-3.02	14.85	8.19
Brazil	35.03	36.56	37.85	37.80	3.35	3.40	3.34	3.21	117.47	124.48	126.28	121.41	-4.87	-3.86	-3.07	-2.47
Argentina	19.74	18.70	20.97	20.01	3.05	2.27	2.88	3.00	60.16	42.52	60.40	59.99	-0.41	-0.69	17.47	41.09
Paraguay	3.46	3.57	3.58	3.58	3.02	2.77	2.77	2.69	10.44	9.90	9.92	9.62	-0.30	-3.02	-0.28	-2.81
Bolivia	1.28	1.53	1.52	1.52	1.74	1.77	1.83	1.83	2.22	2.71	2.78	2.78	0.00	0.00	0.08	2.77
Uruguay	1.13	1.15	1.31	1.05	2.89	1.23	1.98	1.98	3.28	1.41	2.59	2.07	-0.52	-20.08	0.66	46.60
China	22.72	24.16	24.46	24.03	2.42	2.46	2.44	2.49	54.92	59.49	59.70	59.78	0.08	0.13	0.29	0.49
South Asia	37.06	37.57	37.66	37.51	1.09	1.02	1.00	1.00	40.43	38.37	37.73	37.55	-0.19	-0.49	-0.82	-2.14
India	33.83	34.11	34.50	34.35	1.07	1.00	0.98	0.97	36.32	33.99	33.70	33.49	-0.21	-0.63	-0.51	-1.49
Pakistan	2.88	3.11	2.80	2.80	1.29	1.27	1.29	1.30	3.70	3.96	3.61	3.64	0.03	0.75	-0.32	-7.99
European Union	11.79	12.36	12.41	12.42	2.71	2.83	2.64	2.64	31.96	34.98	32.73	32.74	0.01	0.02	-2.25	-6.42
Former Soviet Union - 12	22.94	24.37	25.36	25.62	1.74	1.66	1.75	1.78	39.91	40.42	44.28	45.59	1.31	2.96	5.17	12.80
Russia	10.20	10.66	11.70	11.95	1.47	1.45	1.49	1.54	14.99	15.48	17.40	18.45	1.05	6.03	2.97	19.19
Ukraine	9.11	9.57	9.50	9.50	2.28	2.07	2.33	2.34	20.74	19.81	22.10	22.25	0.15	0.68	2.44	12.33
Uzbekistan	1.18	1.25	1.20	1.20	1.19	1.21	1.00	1.10	1.40	1.51	1.20	1.32	0.12	10.17	-0.19	-12.57
Canada	10.52	12.23	11.68	11.68	2.49	2.38	2.44	2.44	26.25	29.10	28.46	28.46	0.00	0.00	-0.65	-2.22
Africa	20.09	20.19	20.38	19.88	0.94	0.96	0.95	0.94	18.84	19.47	19.39	18.70	-0.70	-3.60	-0.77	-3.97
Nigeria	3.90	3.97	3.97	3.97	1.04	1.08	1.08	1.08	4.07	4.30	4.30	4.30	0.00	0.00	0.00	0.00
South Africa	1.29	1.48	1.59	1.26	1.82	1.70	1.57	1.56	2.35	2.52	2.50	1.96	-0.55	-21.77	-0.56	-22.23
Tanzania	1.40	1.35	1.50	1.50	0.85	0.89	0.86	0.86	1.19	1.20	1.29	1.29	0.00	0.00	0.09	7.08
Southeast Asia	3.26	3.22	3.19	3.19	1.41	1.40	1.40	1.40	4.59	4.52	4.47	4.47	0.00	0.00	-0.06	-1.22
Indonesia	1.03	1.00	0.98	0.98	1.64	1.61	1.61	1.61	1.69	1.62	1.58	1.58	0.00	0.00	-0.04	-2.16
Burma	1.88	1.88	1.88	1.88	1.18	1.19	1.18	1.18	2.21	2.24	2.22	2.22	0.00	0.00	-0.02	-0.67
Australia	3.32	3.30	2.27	2.27	1.70	1.60	1.39	1.40	5.66	5.28	3.15	3.18	0.03	0.95	-2.10	-39.78
Turkey	1.11	1.25	1.36	1.36	2.49	2.53	2.60	2.46	2.76	3.17	3.55	3.35	-0.20	-5.53	0.19	5.85
Others	1.71	1.76	1.77	1.77	2.19	2.03	2.20	2.20	3.76	3.58	3.88	3.88	0.00	0.00	0.30	8.24

World Total and Total Foreign: (Major Oilseeds plus copra and palm kernel) Major Oilseeds: (soybeans, sunflowerseeds, peanuts(inshell), cottonseed and rapeseed)

Table 11 Soybean Area, Yield, and Production

Country / Region	Area (Million hectares)				Yield (Metric tons per hectare)				Production (Million metric tons)				Change in Production			
	2016/17	Prel.	2018/19 Proj.		2016/17	Prel.	2018/19 Proj.		2016/17	Prel.	2018/19 Proj.		From last month		From last year	
		2017/18	Dec	Feb		2017/18	Dec	Feb		2017/18	Dec	Feb	MMT	Percent	MMT	Percent
World	119.77	124.70	128.31	126.27	2.92	2.73	2.88	2.86	349.31	339.99	369.20	360.99	-8.21	-2.22	21.00	6.18
United States	33.47	36.24	35.75	35.66	3.49	3.31	3.50	3.47	116.93	120.07	125.18	123.66	-1.52	-1.21	3.60	3.00
Total Foreign	86.30	88.46	92.55	90.61	2.69	2.49	2.64	2.62	232.38	219.93	244.02	237.33	-6.70	-2.74	17.40	7.91
South America																
Brazil	33.90	35.15	36.20	36.10	3.38	3.44	3.37	3.24	114.60	120.80	122.00	117.00	-5.00	-4.10	-3.80	-3.15
Argentina	17.34	16.30	18.50	17.50	3.17	2.32	3.00	3.14	55.00	37.80	55.50	55.00	-0.50	-0.90	17.20	45.50
Paraguay	3.39	3.50	3.50	3.50	3.05	2.80	2.80	2.71	10.34	9.81	9.80	9.50	-0.30	-3.06	-0.31	-3.16
Bolivia	1.13	1.40	1.40	1.40	1.86	1.86	1.93	1.93	2.11	2.60	2.70	2.70	0.00	0.00	0.10	3.85
Uruguay	1.09	1.10	1.25	0.99	2.95	1.21	2.00	2.00	3.21	1.33	2.50	1.98	-0.52	-20.80	0.65	48.43
East Asia																
China	7.60	8.25	8.83	8.40	1.80	1.84	1.81	1.89	13.64	15.20	16.00	15.90	-0.10	-0.63	0.70	4.61
Korea, South	0.05	0.05	0.06	0.06	1.53	1.87	1.75	1.75	0.08	0.09	0.10	0.10	0.00	0.00	0.01	16.28
Korea, North	0.18	0.15	0.15	0.15	1.61	1.49	1.50	1.50	0.28	0.22	0.23	0.23	0.00	0.00	0.00	0.90
Japan	0.15	0.15	0.15	0.15	1.59	1.66	1.74	1.74	0.24	0.25	0.26	0.26	0.00	0.00	0.02	6.02
India	11.18	10.40	11.00	11.00	0.98	0.80	1.00	1.00	10.99	8.35	11.00	11.00	0.00	0.00	2.65	31.74
Canada	2.23	2.94	2.55	2.55	2.96	2.63	2.86	2.86	6.60	7.72	7.30	7.30	0.00	0.00	-0.42	-5.40
Former Soviet Union - 12																
Russia	2.12	2.57	2.70	2.70	1.48	1.41	1.44	1.44	3.13	3.62	3.90	3.90	0.00	0.00	0.28	7.71
Ukraine	1.86	1.98	1.70	1.70	2.31	1.97	2.59	2.59	4.29	3.89	4.40	4.40	0.00	0.00	0.51	13.11
European Union	0.80	0.93	0.93	0.93	3.00	2.88	2.90	2.90	2.41	2.67	2.70	2.70	0.00	0.00	0.03	1.24
Southeast Asia																
Indonesia	0.43	0.42	0.41	0.41	1.31	1.29	1.27	1.27	0.57	0.54	0.52	0.52	0.00	0.00	-0.02	-3.70
Vietnam	0.07	0.06	0.06	0.06	1.48	1.50	1.50	1.50	0.10	0.09	0.09	0.09	0.00	0.00	0.00	0.00
Thailand	0.03	0.04	0.03	0.03	1.78	1.57	1.47	1.47	0.06	0.06	0.05	0.05	0.00	0.00	-0.01	-9.09
Burma	0.15	0.15	0.15	0.15	1.07	1.07	1.07	1.07	0.16	0.16	0.16	0.16	0.00	0.00	0.00	0.00
Serbia	0.19	0.20	0.22	0.22	3.51	2.30	2.84	2.84	0.65	0.46	0.63	0.63	0.00	0.00	0.17	35.87
Mexico	0.28	0.26	0.21	0.21	1.85	1.65	1.62	1.62	0.52	0.43	0.34	0.34	0.00	0.00	-0.09	-21.48
Africa																
South Africa	0.57	0.79	0.90	0.75	2.29	1.97	1.75	1.73	1.32	1.55	1.58	1.30	-0.28	-17.46	-0.25	-16.18
Nigeria	0.94	1.00	1.00	1.00	1.00	1.00	1.00	1.00	0.94	1.00	1.00	1.00	0.00	0.00	0.00	0.00
Zambia	0.14	0.23	0.18	0.18	1.94	1.56	1.83	1.83	0.27	0.35	0.32	0.32	0.00	0.00	-0.03	-8.83
Uganda	0.05	0.05	0.05	0.05	0.60	0.60	0.60	0.60	0.03	0.03	0.03	0.03	0.00	0.00	0.00	0.00
Middle East																
Iran	0.06	0.07	0.07	0.07	2.25	2.29	2.29	2.29	0.14	0.16	0.16	0.16	0.00	0.00	0.00	0.00
Turkey	0.03	0.02	0.03	0.03	3.33	3.75	3.85	3.85	0.10	0.09	0.10	0.10	0.00	0.00	0.01	11.11
Others	0.34	0.33	0.33	0.33	1.78	2.03	2.02	2.02	0.61	0.66	0.67	0.67	0.00	0.00	0.00	0.61

World and Selected Countries and Regions

Table 12 Cottonseed Area, Yield, and Production

Country / Region	Area (Million hectares)				Yield (Metric tons per hectare)				Production (Million metric tons)				Change in Production						
	2016/17	Prel.		2018/19 Proj.		2016/17	Prel.		2018/19 Proj.		2016/17	Prel.		2018/19 Proj.		From last month		From last year	
		2017/18	Dec	Feb	2017/18		Dec	Feb	2017/18	Dec		Feb	MMT	Percent	MMT	Percent			
World	29.18	32.94	32.63	32.45	1.34	1.37	1.33	1.33	39.08	44.99	43.39	43.26	-0.14	-0.31	-1.73	-3.85			
United States	3.85	4.49	4.20	4.26	1.27	1.30	1.27	1.23	4.87	5.83	5.31	5.26	-0.06	-1.09	-0.57	-9.78			
Total Foreign	25.33	28.44	28.43	28.19	1.35	1.38	1.34	1.35	34.21	39.16	38.08	38.00	-0.08	-0.20	-1.16	-2.96			
South Asia																			
India	10.85	12.45	12.40	12.25	1.06	0.99	0.94	0.94	11.46	12.31	11.68	11.46	-0.21	-1.82	-0.85	-6.90			
Pakistan	2.50	2.70	2.40	2.40	1.33	1.32	1.34	1.35	3.34	3.55	3.22	3.25	0.03	0.84	-0.30	-8.53			
China	2.90	3.40	3.35	3.35	3.03	3.18	3.16	3.22	8.80	10.80	10.60	10.78	0.18	1.67	-0.02	-0.21			
Former Soviet Union - 12																			
Uzbekistan	1.18	1.25	1.20	1.20	1.19	1.21	1.00	1.10	1.40	1.51	1.20	1.32	0.12	10.17	-0.19	-12.57			
Turkmenistan	0.55	0.55	0.55	0.55	0.95	0.96	0.72	0.69	0.52	0.53	0.39	0.38	-0.01	-3.32	-0.15	-28.00			
Tajikistan	0.17	0.19	0.19	0.19	1.02	0.97	0.93	0.93	0.17	0.18	0.18	0.18	0.00	0.00	0.00	-2.22			
Kazakhstan	0.12	0.13	0.12	0.13	0.97	0.94	1.06	0.99	0.11	0.12	0.13	0.13	0.00	1.57	0.01	10.26			
South America																			
Brazil	0.94	1.18	1.40	1.45	2.44	2.57	2.57	2.57	2.30	3.02	3.60	3.73	0.13	3.64	0.71	23.62			
Argentina	0.24	0.32	0.42	0.42	1.16	0.87	0.96	0.96	0.28	0.28	0.40	0.40	0.00	0.00	0.13	45.13			
Middle East																			
Turkey	0.40	0.47	0.52	0.52	2.63	2.77	2.70	2.32	1.05	1.30	1.40	1.21	-0.20	-13.96	-0.09	-7.08			
Syria	0.04	0.03	0.03	0.03	2.00	2.17	2.12	2.12	0.08	0.07	0.05	0.05	0.00	0.00	-0.01	-18.46			
Iran	0.10	0.09	0.09	0.09	0.98	0.96	1.06	1.06	0.10	0.08	0.09	0.09	0.00	0.00	0.01	9.76			
Australia	0.58	0.53	0.30	0.30	2.16	2.83	2.50	2.60	1.25	1.50	0.75	0.78	0.03	3.99	-0.72	-47.93			
European Union	0.27	0.30	0.31	0.32	1.53	1.67	1.70	1.70	0.42	0.49	0.53	0.54	0.01	1.51	0.05	9.13			
Africa																			
Burkina	0.70	0.85	0.75	0.70	0.52	0.39	0.52	0.47	0.36	0.33	0.39	0.33	-0.06	-14.47	0.00	0.00			
Mali	0.66	0.71	0.74	0.73	0.54	0.56	0.54	0.52	0.35	0.40	0.40	0.38	-0.01	-3.54	-0.01	-3.54			
Cameroon	0.23	0.23	0.23	0.23	1.04	1.11	1.11	1.14	0.24	0.25	0.25	0.26	0.01	4.80	0.01	4.80			
Cote d'Ivoire	0.35	0.37	0.42	0.37	0.48	0.57	0.54	0.58	0.17	0.21	0.23	0.21	-0.01	-5.73	0.00	1.90			
Benin	0.42	0.53	0.60	0.56	0.68	0.71	0.70	0.77	0.28	0.38	0.42	0.43	0.01	2.14	0.05	14.36			
Tanzania	0.40	0.35	0.50	0.50	0.21	0.29	0.37	0.37	0.09	0.10	0.19	0.19	0.00	0.00	0.09	84.16			
Egypt	0.06	0.09	0.14	0.15	0.95	1.00	1.01	1.05	0.05	0.09	0.14	0.15	0.02	10.95	0.06	67.03			
Nigeria	0.28	0.27	0.27	0.27	0.36	0.38	0.38	0.38	0.10	0.10	0.10	0.10	0.00	0.00	0.00	0.00			
Uganda	0.07	0.08	0.08	0.08	1.49	0.86	1.45	0.74	0.11	0.07	0.11	0.06	-0.05	-45.87	-0.01	-14.49			
Zimbabwe	0.21	0.20	0.23	0.20	0.25	0.29	0.38	0.22	0.05	0.06	0.09	0.04	-0.04	-50.57	-0.02	-25.86			
Sudan	0.10	0.12	0.12	0.12	1.93	2.03	2.13	2.13	0.19	0.24	0.26	0.26	0.00	0.00	0.01	5.35			
Mexico	0.10	0.21	0.24	0.24	2.50	2.52	2.49	2.49	0.26	0.53	0.59	0.59	0.00	0.00	0.06	10.57			
Burma	0.24	0.25	0.24	0.24	1.17	1.24	1.23	1.23	0.29	0.31	0.30	0.30	0.00	0.00	-0.02	-4.84			
Others	0.70	0.64	0.63	0.63	0.59	0.56	0.67	0.65	0.42	0.36	0.42	0.41	-0.01	-2.88	0.05	12.50			

World and Selected Countries and Regions

Table 13 Peanut Area, Yield, and Production

Country / Region	Area (Million hectares)				Yield (Metric tons per hectare)				Production (Million metric tons)				Change in Production			
	2016/17	Prel.	2018/19 Proj.		2016/17	Prel.	2018/19 Proj.		2016/17	Prel.	2018/19 Proj.		From last month		From last year	
		2017/18	Dec	Feb		2017/18	Dec	Feb		2017/18	Dec	Feb	MMT	Percent	MMT	Percent
World	26.43	25.92	25.26	25.23	1.67	1.73	1.66	1.66	44.15	44.93	41.95	41.87	-0.09	-0.20	-3.06	-6.82
United States	0.62	0.72	0.55	0.55	4.07	4.49	4.55	4.47	2.53	3.23	2.48	2.48	-0.01	-0.20	-0.75	-23.27
Total Foreign	25.81	25.20	24.71	24.67	1.61	1.65	1.60	1.60	41.62	41.70	39.47	39.39	-0.08	-0.20	-2.31	-5.54
China	4.45	4.61	4.56	4.56	3.68	3.71	3.73	3.73	16.36	17.09	17.00	17.00	0.00	0.00	-0.09	-0.54
Africa																
Nigeria	2.68	2.70	2.70	2.70	1.13	1.19	1.19	1.19	3.03	3.20	3.20	3.20	0.00	0.00	0.00	0.00
Sudan	2.32	1.80	1.80	1.80	0.79	0.78	0.78	0.78	1.83	1.40	1.40	1.40	0.00	0.00	0.00	0.00
Senegal	1.15	1.25	1.10	1.10	0.82	1.13	0.91	0.91	0.95	1.41	1.00	1.00	0.00	0.00	-0.41	-29.18
Cameroon	0.45	0.43	0.43	0.43	1.65	1.40	1.40	1.40	0.75	0.60	0.60	0.60	0.00	0.00	0.00	0.00
Ghana	0.34	0.34	0.34	0.34	1.24	1.31	1.31	1.31	0.42	0.44	0.44	0.44	0.00	0.00	0.00	0.00
Chad	0.97	0.95	0.95	0.95	1.07	1.05	1.05	1.05	1.04	1.00	1.00	1.00	0.00	0.00	0.00	0.00
Malawi	0.37	0.37	0.37	0.37	0.74	0.88	0.88	0.88	0.28	0.33	0.33	0.33	0.00	0.00	0.00	0.00
Congo (Kinshasa)	0.50	0.50	0.50	0.50	0.85	0.85	0.85	0.85	0.42	0.42	0.42	0.42	0.00	0.00	0.00	0.00
Niger	0.77	0.75	0.75	0.75	0.59	0.53	0.53	0.53	0.45	0.40	0.40	0.40	0.00	0.00	0.00	0.00
Mali	0.43	0.38	0.38	0.38	0.87	0.87	1.07	1.07	0.37	0.33	0.40	0.40	0.00	0.00	0.08	23.08
Uganda	0.43	0.43	0.43	0.43	0.71	0.71	0.71	0.71	0.30	0.30	0.30	0.30	0.00	0.00	0.00	0.00
Burkina	0.42	0.43	0.43	0.43	0.80	0.81	0.81	0.81	0.34	0.35	0.35	0.35	0.00	0.00	0.00	0.00
Guinea	0.27	0.30	0.30	0.30	1.39	1.20	1.20	1.20	0.38	0.36	0.36	0.36	0.00	0.00	0.00	0.00
Egypt	0.06	0.06	0.06	0.06	3.20	3.20	3.20	3.20	0.21	0.21	0.21	0.21	0.00	0.00	0.00	0.00
Central African Republic	0.11	0.10	0.10	0.10	1.21	1.50	1.50	1.50	0.14	0.15	0.15	0.15	0.00	0.00	0.00	0.00
South Africa	0.06	0.06	0.06	0.02	2.20	1.29	1.64	1.50	0.12	0.07	0.09	0.03	-0.06	-66.67	-0.04	-58.33
Mozambique	0.40	0.37	0.38	0.38	0.28	0.32	0.34	0.34	0.11	0.12	0.13	0.13	0.00	0.00	0.01	8.33
Cote d'Ivoire	0.08	0.08	0.08	0.08	1.35	1.38	1.38	1.38	0.11	0.11	0.11	0.11	0.00	0.00	0.00	0.00
Benin	0.16	0.15	0.15	0.15	0.86	0.93	0.93	0.93	0.14	0.14	0.14	0.14	0.00	0.00	0.00	0.00
South Asia																
India	5.34	4.93	4.70	4.70	1.30	1.35	1.00	1.00	6.92	6.65	4.70	4.70	0.00	0.00	-1.95	-29.32
Pakistan	0.09	0.09	0.10	0.10	0.90	0.94	0.95	0.95	0.09	0.09	0.09	0.09	0.00	0.00	0.00	2.27
Southeast Asia																
Indonesia	0.60	0.58	0.57	0.57	1.87	1.85	1.86	1.86	1.12	1.08	1.06	1.06	0.00	0.00	-0.02	-1.40
Burma	0.89	0.89	0.89	0.89	1.55	1.55	1.55	1.55	1.38	1.38	1.38	1.38	0.00	0.00	0.00	0.00
Vietnam	0.20	0.19	0.19	0.19	2.37	2.37	2.37	2.37	0.46	0.45	0.45	0.45	0.00	0.00	0.00	0.00
Thailand	0.02	0.02	0.02	0.02	1.67	1.67	1.67	1.67	0.04	0.04	0.04	0.04	0.00	0.00	0.00	0.00
South America																
Argentina	0.32	0.38	0.33	0.33	3.98	2.27	3.24	3.23	1.29	0.87	1.07	1.05	-0.02	-1.87	0.18	21.11
Brazil	0.13	0.14	0.15	0.15	3.61	3.69	3.50	3.50	0.47	0.51	0.53	0.53	0.00	0.00	0.01	2.34
Mexico	0.06	0.06	0.06	0.06	1.71	1.70	1.70	1.70	0.10	0.10	0.10	0.10	0.00	0.00	0.00	0.00
Others	1.75	1.88	1.86	1.86	1.16	1.13	1.10	1.10	2.04	2.13	2.04	2.04	0.00	0.00	-0.08	-3.91

Table 14 Sunflowerseed Area, Yield, and Production

Country / Region	Area (Million hectares)				Yield (Metric tons per hectare)				Production (Million metric tons)				Change in Production			
	2016/17	Prel.		2018/19 Proj.		2016/17	Prel.		2018/19 Proj.		2016/17	Prel.		2018/19 Proj.		
		2017/18	Dec	Feb	2017/18		Dec	Feb	2017/18	Dec		Feb	MMT	Percent	MMT	Percent
World	25.82	25.98	26.46	26.60	1.86	1.82	1.91	1.94	48.01	47.40	50.47	51.49	1.02	2.03	4.09	8.64
United States	0.62	0.54	0.50	0.50	1.94	1.80	1.75	1.94	1.20	0.97	0.88	0.96	0.08	9.34	-0.01	-1.03
Total Foreign	25.20	25.44	25.96	26.11	1.86	1.83	1.91	1.94	46.81	46.43	49.59	50.53	0.94	1.90	4.10	8.84
Former Soviet Union - 12																
Russia	7.18	7.15	7.50	7.75	1.51	1.45	1.53	1.62	10.86	10.36	11.50	12.55	1.05	9.13	2.19	21.12
Ukraine	6.80	6.80	6.80	6.80	2.24	2.01	2.21	2.21	15.20	13.70	15.00	15.00	0.00	0.00	1.30	9.49
Kazakhstan	0.81	0.88	0.93	0.93	0.94	1.02	1.08	1.08	0.76	0.90	1.00	1.00	0.00	0.00	0.10	10.74
European Union	4.13	4.31	4.29	4.29	2.08	2.25	2.31	2.31	8.60	9.68	9.90	9.90	0.00	0.00	0.22	2.28
South America																
Argentina	1.82	1.68	1.70	1.75	1.95	2.11	2.00	2.00	3.55	3.54	3.40	3.50	0.10	2.94	-0.04	-1.07
Uruguay	0.04	0.05	0.06	0.06	1.50	1.56	1.61	1.61	0.07	0.08	0.09	0.09	0.00	0.00	0.01	15.38
Bolivia	0.14	0.13	0.12	0.12	0.80	0.80	0.70	0.70	0.11	0.11	0.08	0.08	0.00	0.00	-0.03	-23.81
Brazil	0.06	0.10	0.10	0.10	1.65	1.54	1.55	1.55	0.10	0.15	0.16	0.16	0.00	0.00	0.01	4.03
Paraguay	0.03	0.03	0.03	0.03	1.60	1.66	1.69	1.69	0.05	0.05	0.05	0.05	0.00	0.00	0.00	1.89
China	1.15	1.25	1.25	1.25	2.59	2.50	2.60	2.60	2.99	3.12	3.25	3.25	0.00	0.00	0.13	4.17
South Asia																
India	0.39	0.33	0.40	0.40	0.82	0.70	0.81	0.81	0.32	0.23	0.32	0.32	0.00	0.00	0.09	40.87
Pakistan	0.07	0.08	0.07	0.07	1.07	1.13	1.07	1.07	0.08	0.09	0.08	0.08	0.00	0.00	-0.02	-16.67
Middle East																
Turkey	0.60	0.70	0.75	0.75	2.20	2.21	2.40	2.40	1.32	1.55	1.80	1.80	0.00	0.00	0.25	16.13
Iran	0.04	0.04	0.04	0.04	0.98	1.08	1.08	1.08	0.04	0.04	0.04	0.04	0.00	0.00	0.00	0.00
Israel	0.01	0.01	0.01	0.01	1.60	1.60	1.60	1.60	0.02	0.02	0.02	0.02	0.00	0.00	0.00	0.00
Africa																
Egypt	0.01	0.01	0.01	0.01	2.43	2.38	2.38	2.38	0.02	0.02	0.02	0.02	0.00	0.00	0.00	0.00
Morocco	0.02	0.02	0.02	0.02	1.29	1.29	1.29	1.29	0.03	0.03	0.03	0.03	0.00	0.00	0.00	0.00
South Africa	0.64	0.60	0.60	0.45	1.37	1.43	1.27	1.22	0.87	0.86	0.76	0.55	-0.21	-27.63	-0.31	-35.97
Burma	0.60	0.60	0.60	0.60	0.65	0.65	0.65	0.65	0.39	0.39	0.39	0.39	0.00	0.00	0.00	0.00
Canada	0.03	0.03	0.03	0.03	1.82	2.23	2.11	2.11	0.05	0.06	0.06	0.06	0.00	0.00	0.00	-1.72
Australia	0.03	0.02	0.03	0.03	1.14	1.82	1.28	1.28	0.03	0.03	0.03	0.03	0.00	0.00	0.00	3.23
Others	0.61	0.63	0.64	0.64	2.25	2.28	2.52	2.52	1.36	1.43	1.62	1.62	0.00	0.00	0.19	13.38

World and Selected Countries and Regions

Table 15 Rapeseed Area, Yield, and Production

Country / Region	Area (Million hectares)				Yield (Metric tons per hectare)				Production (Million metric tons)				Change in Production			
	2016/17	Prel.		2018/19 Proj.		2016/17	Prel.		2018/19 Proj.		2016/17	Prel.		2018/19 Proj.		
		2017/18	Dec	Feb	2017/18		Dec	Feb	2017/18	Dec		Feb	MMT	Percent	MMT	Percent
World	33.37	35.37	35.02	35.02	2.08	2.09	2.01	2.01	69.43	74.00	70.22	70.37	0.15	0.22	-3.63	-4.90
United States	0.69	0.81	0.79	0.79	2.05	1.71	2.09	2.08	1.41	1.39	1.65	1.64	0.00	-0.12	0.25	17.93
Total Foreign	32.69	34.56	34.23	34.24	2.08	2.10	2.00	2.01	68.03	72.60	68.57	68.73	0.16	0.23	-3.88	-5.34
European Union	6.58	6.83	6.88	6.88	3.12	3.24	2.85	2.85	20.54	22.15	19.60	19.60	0.00	0.00	-2.55	-11.49
Canada	8.26	9.27	9.10	9.10	2.37	2.30	2.32	2.32	19.60	21.33	21.10	21.10	0.00	0.00	-0.23	-1.07
China	6.62	6.65	6.47	6.47	1.98	2.00	1.99	1.99	13.13	13.27	12.85	12.85	0.00	0.00	-0.42	-3.19
South Asia																
India	6.07	6.00	6.00	6.00	1.09	1.08	1.00	1.00	6.62	6.45	6.00	6.00	0.00	0.00	-0.45	-6.98
Pakistan	0.21	0.24	0.23	0.23	0.95	0.96	0.98	0.98	0.20	0.23	0.23	0.23	0.00	0.00	0.00	0.00
Bangladesh	0.25	0.25	0.25	0.25	0.92	0.92	0.92	0.92	0.23	0.23	0.23	0.23	0.00	0.00	0.00	0.00
Former Soviet Union - 12																
Russia	0.91	0.95	1.50	1.50	1.10	1.58	1.33	1.33	1.00	1.50	2.00	2.00	0.00	0.00	0.50	33.60
Ukraine	0.45	0.79	1.00	1.00	2.78	2.80	2.70	2.85	1.25	2.22	2.70	2.85	0.15	5.56	0.63	28.55
Belarus	0.21	0.33	0.35	0.35	1.24	1.81	1.57	1.57	0.26	0.60	0.55	0.55	0.00	0.00	-0.05	-8.79
Kazakhstan	0.16	0.25	0.25	0.25	1.06	1.11	1.10	1.10	0.17	0.28	0.28	0.28	0.00	0.00	0.00	-1.43
Australia	2.68	2.70	1.90	1.90	1.61	1.36	1.21	1.21	4.31	3.67	2.30	2.30	0.00	0.00	-1.37	-37.33
South America																
Chile	0.05	0.06	0.05	0.05	3.98	3.86	4.20	4.20	0.18	0.22	0.23	0.23	0.00	0.00	0.01	3.18
Paraguay	0.03	0.03	0.04	0.04	2.00	1.00	1.50	1.50	0.05	0.03	0.06	0.06	0.00	0.00	0.03	100.00
Switzerland	0.02	0.02	0.02	0.02	3.14	3.14	3.14	3.14	0.07	0.07	0.07	0.07	0.00	0.00	0.00	0.00
Ethiopia	0.02	0.04	0.04	0.04	1.79	1.71	1.57	1.57	0.04	0.06	0.06	0.06	0.00	0.00	-0.01	-8.33
Others	0.17	0.15	0.15	0.15	2.26	2.09	2.20	2.20	0.38	0.31	0.33	0.34	0.01	1.82	0.03	9.45

World and Selected Countries and Regions

Table 16 Copra, Palm Kernel, and Palm Oil Production

Country / Region	Production (Million metric tons)				Change in Production			
	2016/17	Prel.	2018/19 Proj.		From last month		From last year	
		2017/18	Dec	Feb	MMT	Percent	MMT	Percent
Oilseed, Copra								
Philippines	2.30	2.60	2.70	2.70	0.00	0.00	0.10	3.85
Indonesia	1.58	1.45	1.42	1.42	0.00	0.00	-0.03	-2.07
India	0.72	0.75	0.75	0.75	0.00	0.00	0.00	0.00
Vietnam	0.26	0.28	0.29	0.29	0.00	0.00	0.00	0.00
Mexico	0.21	0.21	0.22	0.22	0.00	0.00	0.01	4.76
Papua New Guinea	0.10	0.10	0.10	0.10	0.00	0.00	0.00	0.00
Thailand	0.07	0.07	0.07	0.07	0.00	0.00	0.00	0.00
Sri Lanka	0.07	0.07	0.07	0.07	0.00	0.00	0.00	0.00
Solomon Islands	0.03	0.03	0.03	0.03	0.00	0.00	0.00	0.00
Vanuatu/New Hebrides	0.03	0.03	0.03	0.03	0.00	0.00	0.00	0.00
World	5.51	5.73	5.83	5.83	0.00	0.00	0.10	1.75
Oilseed, Palm Kernel								
Indonesia	9.50	10.50	10.90	10.90	0.00	0.00	0.40	3.81
Malaysia	4.78	4.92	5.20	5.20	0.00	0.00	0.28	5.69
Thailand	0.75	0.82	0.87	0.87	0.00	0.00	0.05	6.10
Nigeria	0.73	0.73	0.73	0.73	0.00	0.00	0.00	0.00
Colombia	0.23	0.33	0.32	0.34	0.02	6.25	0.01	3.03
Guatemala	0.15	0.17	0.15	0.17	0.02	13.33	0.00	0.00
Papua New Guinea	0.16	0.17	0.17	0.17	0.00	0.00	0.00	0.00
Honduras	0.14	0.14	0.14	0.14	0.00	0.00	0.00	0.00
Brazil	0.12	0.13	0.14	0.14	0.00	0.00	0.01	7.69
Ecuador	0.11	0.12	0.12	0.12	0.00	0.00	0.00	0.00
World	17.35	18.70	19.41	19.45	0.04	0.21	0.75	4.01
Oil, Palm								
Indonesia	36.00	39.50	41.50	41.50	0.00	0.00	2.00	5.06
Malaysia	18.86	19.68	20.50	20.50	0.00	0.00	0.82	4.17
Thailand	2.50	2.70	2.90	2.90	0.00	0.00	0.20	7.41
Colombia	1.15	1.63	1.53	1.63	0.10	6.54	0.00	0.00
Nigeria	0.99	1.03	1.02	1.02	0.00	0.00	-0.01	-0.98
Guatemala	0.74	0.85	0.74	0.85	0.11	14.86	0.00	0.00
Papua New Guinea	0.65	0.63	0.63	0.63	0.00	0.00	0.00	0.00
Honduras	0.62	0.58	0.58	0.58	0.00	0.00	0.00	0.00
Ecuador	0.57	0.57	0.61	0.58	-0.03	-4.92	0.01	1.75
Ghana	0.52	0.52	0.52	0.52	0.00	0.00	0.00	0.00
World	65.27	70.46	73.30	73.49	0.19	0.26	3.03	4.30

World and Selected Countries and Regions

Table 17 Cotton Area, Yield, and Production

Country / Region	Area (Million hectares)				Yield (Kilograms per hectare)				Production (Million 480 lb. bales)				Change in Production			
	2016/17	Prel.	2018/19 Proj.		2016/17	Prel.	2018/19 Proj.		2016/17	Prel.	2018/19 Proj.		From last month		From last year	
		2017/18	Dec	Feb		2017/18	Dec	Feb		2017/18	Dec	Feb	MBales	Percent	MBales	Percent
World	29.81	33.57	33.27	33.09	779	802	777	779	106.66	123.69	118.74	118.45	-0.29	-0.24	-5.24	-4.23
United States	3.85	4.49	4.20	4.26	972	1,014	964	939	17.17	20.92	18.59	18.39	-0.20	-1.07	-2.53	-12.11
Total Foreign	25.97	29.07	29.08	28.83	750	770	750	756	89.49	102.77	100.15	100.06	-0.09	-0.09	-2.70	-2.63
South Asia																
India	10.85	12.45	12.40	12.25	542	507	483	480	27.00	29.00	27.50	27.00	-0.50	-1.82	-2.00	-6.90
Pakistan	2.50	2.70	2.40	2.40	671	661	671	680	7.70	8.20	7.40	7.50	0.10	1.35	-0.70	-8.54
China	2.90	3.40	3.35	3.35	1,708	1,761	1,755	1,787	22.75	27.50	27.00	27.50	0.50	1.85	0.00	0.00
South America																
Brazil	0.94	1.18	1.40	1.45	1,626	1,708	1,711	1,712	7.02	9.22	11.00	11.40	0.40	3.64	2.18	23.64
Argentina	0.24	0.32	0.42	0.42	680	558	596	596	0.75	0.82	1.15	1.15	0.00	0.00	0.33	40.24
Paraguay	0.01	0.01	0.01	0.01	416	416	416	416	0.02	0.02	0.02	0.02	0.00	0.00	0.00	0.00
Africa																
Burkina	0.70	0.85	0.75	0.70	407	307	406	373	1.31	1.20	1.40	1.20	-0.20	-14.29	0.00	0.00
Mali	0.66	0.71	0.74	0.73	412	432	412	403	1.24	1.40	1.40	1.35	-0.05	-3.57	-0.05	-3.57
Cote d'Ivoire	0.35	0.37	0.42	0.37	394	467	441	471	0.63	0.79	0.85	0.80	-0.05	-5.88	0.02	1.91
Benin	0.42	0.53	0.60	0.56	446	468	463	505	0.86	1.14	1.28	1.30	0.03	1.96	0.16	14.04
Egypt	0.06	0.09	0.14	0.15	673	718	726	751	0.17	0.30	0.45	0.50	0.05	11.11	0.20	66.67
Cameroon	0.23	0.23	0.23	0.23	455	484	484	497	0.47	0.50	0.50	0.53	0.03	5.00	0.03	5.00
Tanzania	0.40	0.35	0.50	0.50	106	143	185	185	0.20	0.23	0.43	0.43	0.00	0.00	0.20	84.78
Nigeria	0.28	0.27	0.27	0.27	182	190	190	190	0.23	0.24	0.24	0.24	0.00	0.00	0.00	0.00
Zimbabwe	0.21	0.20	0.23	0.20	146	294	218	218	0.14	0.27	0.23	0.20	-0.03	-13.04	-0.07	-25.93
Ethiopia	0.08	0.06	0.07	0.07	550	635	586	586	0.21	0.18	0.18	0.18	0.00	0.00	0.00	0.00
Former Soviet Union - 12																
Uzbekistan	1.18	1.25	1.20	1.20	687	672	599	612	3.73	3.86	3.30	3.38	0.08	2.27	-0.49	-12.56
Turkmenistan	0.55	0.55	0.55	0.55	529	535	399	386	1.33	1.34	1.00	0.97	-0.04	-3.50	-0.38	-27.99
Tajikistan	0.17	0.19	0.19	0.19	567	671	516	516	0.43	0.57	0.45	0.45	0.00	0.00	-0.12	-21.05
Kazakhstan	0.12	0.13	0.12	0.13	568	523	454	553	0.30	0.30	0.25	0.33	0.08	32.00	0.03	10.00
Middle East																
Turkey	0.40	0.47	0.52	0.52	1,742	1,853	1,800	1,549	3.20	4.00	4.30	3.70	-0.60	-13.95	-0.30	-7.50
Syria	0.04	0.03	0.03	0.03	1,089	1,161	1,132	1,132	0.20	0.16	0.13	0.13	0.00	0.00	-0.03	-18.75
Iran	0.10	0.09	0.09	0.09	653	640	704	704	0.30	0.25	0.28	0.28	0.00	0.00	0.03	10.00
Australia	0.58	0.53	0.30	0.30	1,520	1,931	1,814	1,887	4.05	4.70	2.50	2.60	0.10	4.00	-2.10	-44.68
Mexico	0.10	0.21	0.24	0.24	1,602	1,617	1,598	1,598	0.77	1.56	1.73	1.73	0.00	0.00	0.17	10.58
Burma	0.24	0.25	0.24	0.24	634	634	635	635	0.71	0.73	0.70	0.70	0.00	0.00	-0.03	-3.45
Others	1.69	1.69	1.70	1.71	490	554	578	577	3.80	4.31	4.51	4.53	0.02	0.44	0.23	5.27

World and Selected Countries and Regions

TABLE 18

The table below presents a record of the February projection and the final Estimate. Using world wheat production as an example, the "root mean square error" means that chances are 2 out of 3 that the current forecast will not be above or below the final estimate by more than 0.6 percent. Chances are 9 out of 10 (90% confidence level) that the difference will not exceed 1 percent. The average difference between the February projection and the final estimate is 2.5 million tons, ranging from 0 million to 7.3 million tons. The February projection has been below the estimate 28 times and above 9 times.

RELIABILITY OF PRODUCTION PROJECTIONS 1/

COMMODITY AND REGION	Root mean square error	90 percent confidence interval	Difference between forecast and final estimate				
			Average	Smallest	Largest	Years	
						Below final	Above final
	Percent		---Million metric tons---				
WHEAT							
World	0.6	1.0	2.5	0.0	7.3	28	9
U.S.	0.1	0.3	0.1	0.0	0.3	15	11
Foreign	0.7	1.1	2.5	0.0	7.3	28	9
COARSE GRAINS 2/							
World	1.3	2.2	11.1	0.0	36.3	30	7
U.S.	0.2	0.3	0.1	0.0	1.3	17	7
Foreign	1.9	3.2	11.2	0.0	36.3	28	8
RICE (Milled)							
World	1.6	2.7	4.5	0.1	14.0	29	8
U.S.	1.5	2.5	0.1	0.0	0.3	12	6
Foreign	1.6	2.7	4.5	0.1	14.0	29	8
SOYBEANS							
World	2.8	4.7	4.4	0.4	15.3	22	15
U.S.	1.3	2.2	0.6	0.0	2.5	16	15
Foreign	4.7	7.9	4.5	0.3	14.9	23	14
COTTON			---Million 480-lb. bales---				
World	2.4	4.1	1.8	0.0	5.4	27	10
U.S.	1.0	1.7	0.1	0.0	0.3	14	22
Foreign	2.9	4.9	1.8	0.1	5.7	27	10
UNITED STATES			-----Million bushels-----				
CORN	0.2	0.3	3	0	41	2	2
SORGHUM	0.1	0.2	0	0	4	0	2
BARLEY	0.7	1.3	1	0	11	16	4
OATS	0.3	0.6	0	0	2	4	4

1/ Marketing years 1981/82 through 2017/18. Final for grains, soybeans and cotton is defined as the first *November* estimates following the marketing year for 1981/82 through 2017/18, and for 2017/18 last month's estimate.

2/ Includes corn, sorghum, barley, oats, rye, millet, and mixed grain

February 2019

Office of Global Analysis, FAS, USDA