



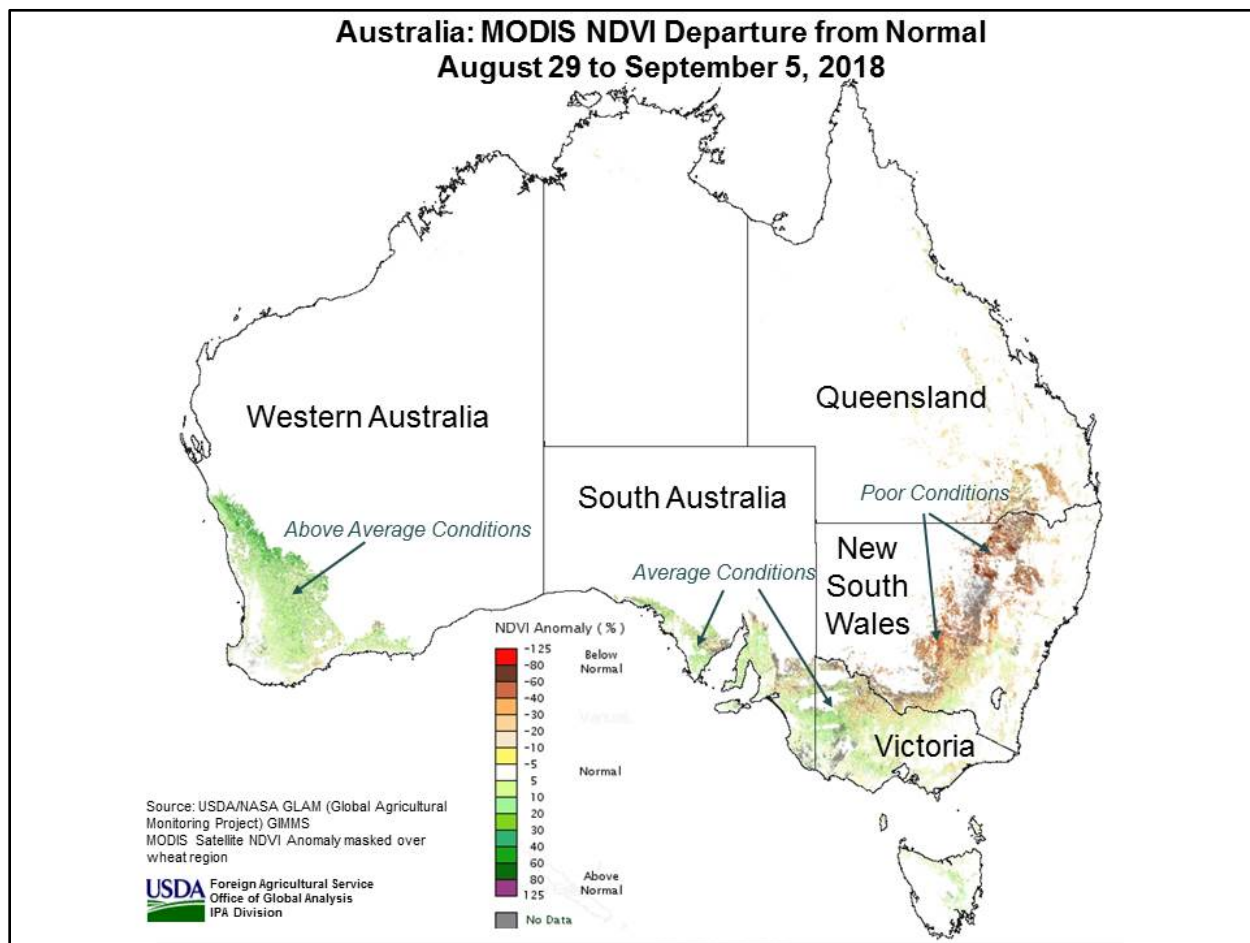
United States
Department of
Agriculture

Foreign
Agricultural
Service

Circular Series
WAP 9-18
September 2018

World Agricultural Production

Australia Wheat: Forecast Production Revised Down



USDA forecasts Australia's 2018/19 wheat crop at 20.0 million metric tons (mmt), down 2.0 mmt or 9 percent from last month, and down 1.3 mmt or 6 percent from last year. Harvested area is now expected to total 11.0 million hectares (mha), down 1.0 mha from last month, and down 1.25 mha or 10 percent from last year. Expected yield is estimated at 1.82 tons per hectare, essentially the same as last year.

Australia's wheat regions have experienced a mixed start. Sowing operations were facilitated by timely rainfall in May in most cropping regions of Western Australia, South Australia, Victoria, and southern New South Wales. Growing conditions remain generally favorable in Western and

Approved by the World Agricultural Outlook Board

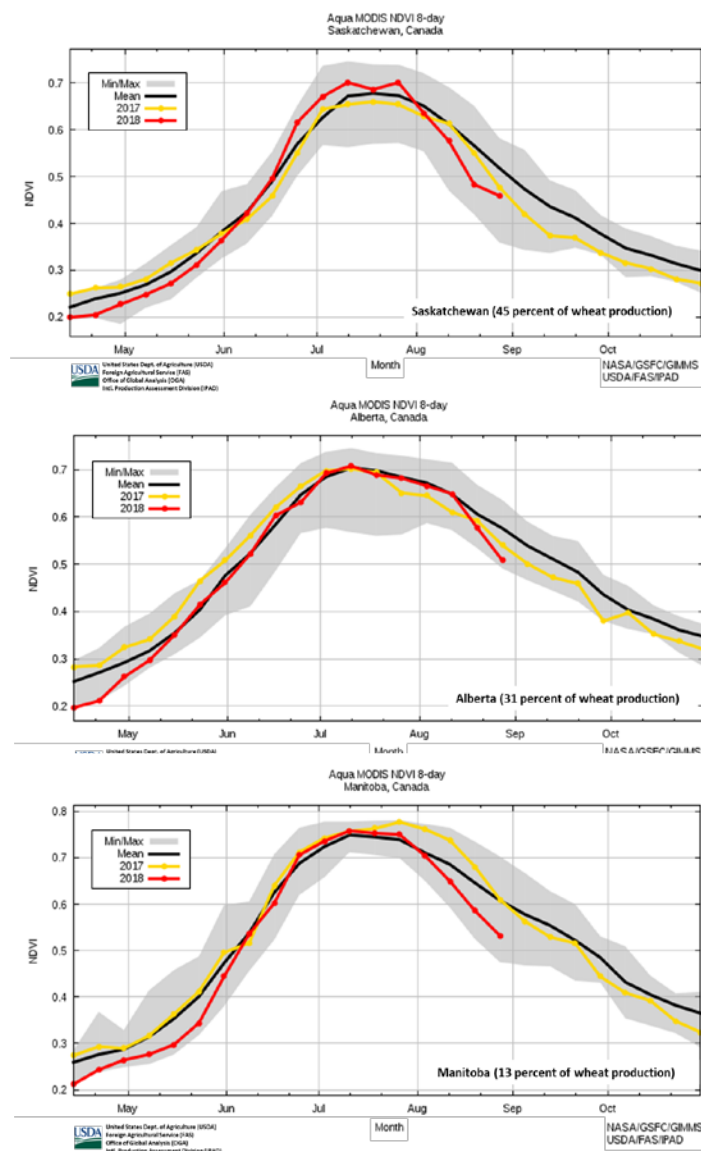
South Australia. In contrast, eastern states of Queensland and New South Wales have received below-normal precipitation for the entire season, resulting in lower yield potential. This is corroborated by satellite-derived vegetation indices. Soil moistures range from below average to insufficient throughout large areas of the wheat belt. Sufficient September rainfall will be critically important for crop development in the south and west; however, it is too late for Queensland and New South Wales. Harvest will begin in November. *(For more information, please contact James.Crutchfield@fas.usda.gov.)*

Canada Wheat: Estimated Production Reduced on Lower-than-Expected Yield

USDA estimates Canada 2018/19 wheat production at 31.5 million metric tons, down 3 percent from last month but up 5 percent from last year. Harvested area is estimated at 9.8 million hectares, up 1 percent from last month and up 9 percent from last year. Yield is estimated at 3.21 metric tons per hectare, down 4 percent from last month and down 4 percent from last year.

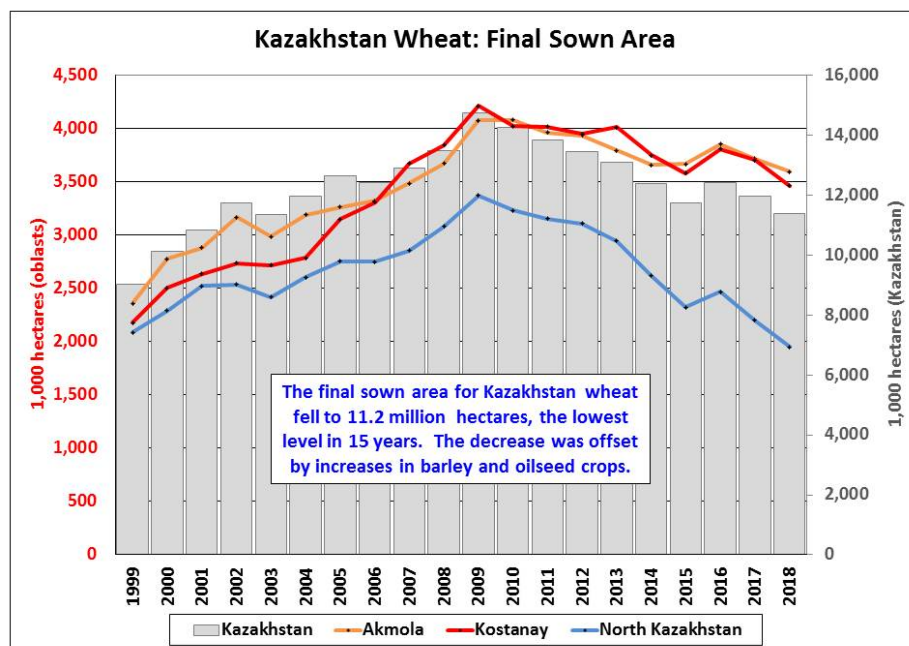
Statistics Canada (StatsCan) issued their preliminary September estimates indicating a 3-percent year-to-year decline in production, mainly due to a 12-percent year-to-year reduction in yield. Historically, the preliminary production estimates reported by StatsCan have been lower than its final estimates. Favorable weather benefitted crop development. MODIS Normalized Difference Vegetation Indices (NDVI) in the major regions of Alberta, Saskatchewan and Manitoba depict average to slightly-above-average conditions throughout the growing season. Late season dryness, has resulted in rapid maturation, slightly impacting yield. Harvest began in August and extends through October.

(For more information, please contact Justin.Jenkins@fas.usda.gov.)



Kazakhstan Wheat: Estimated Production Increased by 0.5 Million Tons

Kazakhstan wheat production for 2018/19 is estimated at 15.0 million metric tons (mmt), up 0.5 mmt from last month and up 0.2 mmt from last year. The month-to-month increase is based on favorable conditions in most of the main spring wheat region throughout the growing season. The estimated harvested area decreased to 11.2 million hectares (mha), down 0.3 mha from last month and down 0.7 mha from last year based on final sown area data from the State Statistical Agency. Wheat area has been declining for the past ten years, while the area planted to oilseeds and feed grains has been increasing.



Source: State Statistical Agency of Kazakhstan

Foreign Agricultural Service
Office of Global Analysis
IPA Division

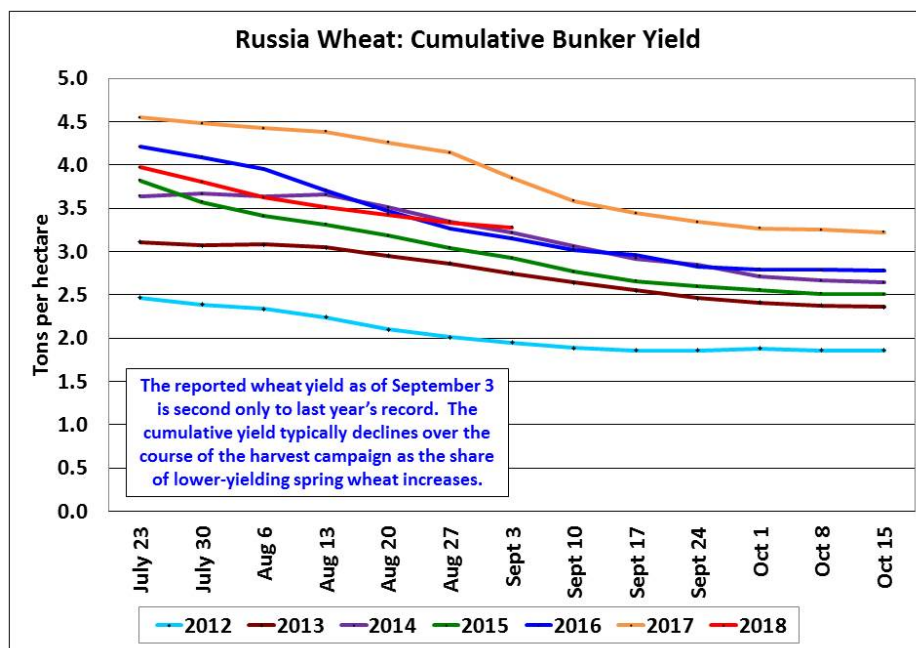


The grain harvest in north-central Kazakhstan was approximately 18 percent complete as of September 7 compared to 57 percent by the same date last year, with reported yield up 8 percent from last year. Spring wheat accounts for about 95 percent of the country's wheat output, and 85 percent of the spring wheat is grown in three territories in north-central Kazakhstan: Akmola, Kostanay, and North Kazakhstan. (For more information, please contact Mark.Lindeman@fas.usda.gov.)

Russia Wheat: Harvest Reports Drive Increase in Estimated Production

Russia wheat production for 2018/19 is estimated at 71.0 million metric tons (mmt), up 3.0 mmt from last month but down 14.0 mmt from last year's record crop. The estimate includes 51.0 mmt of winter wheat and 20.0 mmt of spring wheat, and excludes estimated output from Crimea. Harvested area is estimated at 26.0 million hectares (14.35 mha winter and 11.65 mha spring), against 27.3 mha last year. The month-to-month increase is based on two factors: a 2-percent increase in the estimated harvested area for total wheat, and a 3-percent increase in the estimated winter wheat yield.

The harvest of winter wheat was largely complete by mid-August. Although the estimated yield is down substantially from last year's record, it roughly matches the average of the past 5 years. Prospects remain highly favorable for spring wheat in the Siberian and Ural Districts. Harvest was just underway in early September and will continue through October.



Source: Russian Ministry of Agriculture



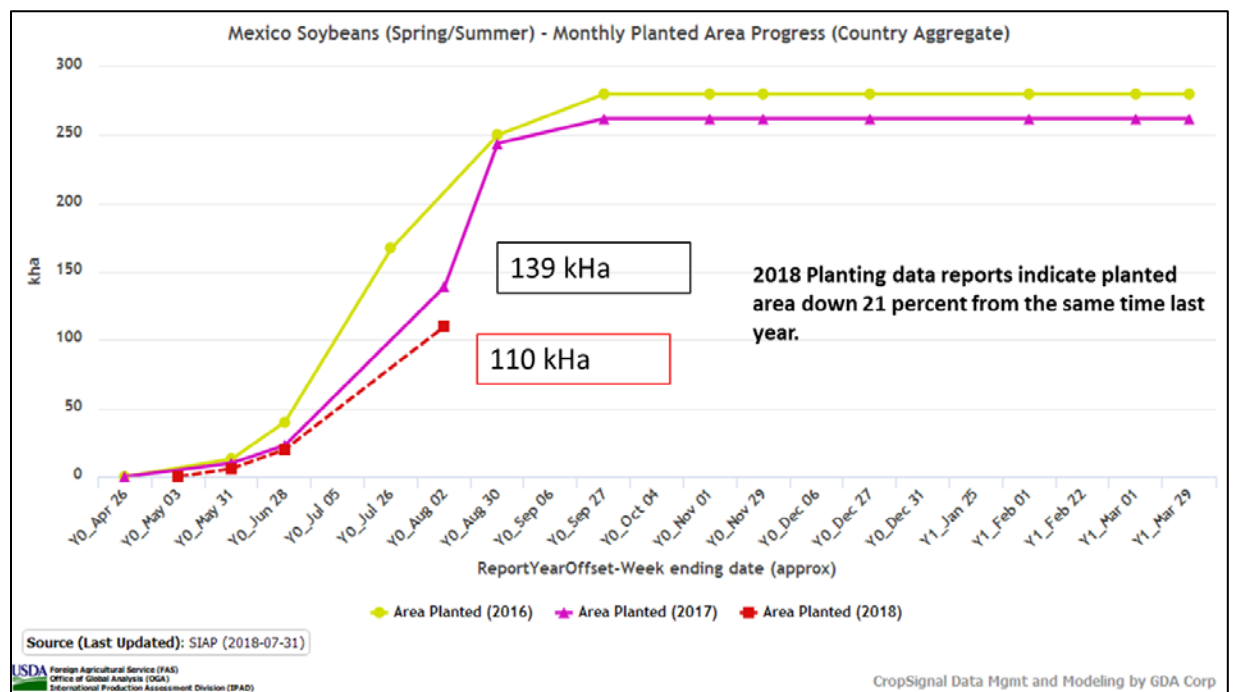
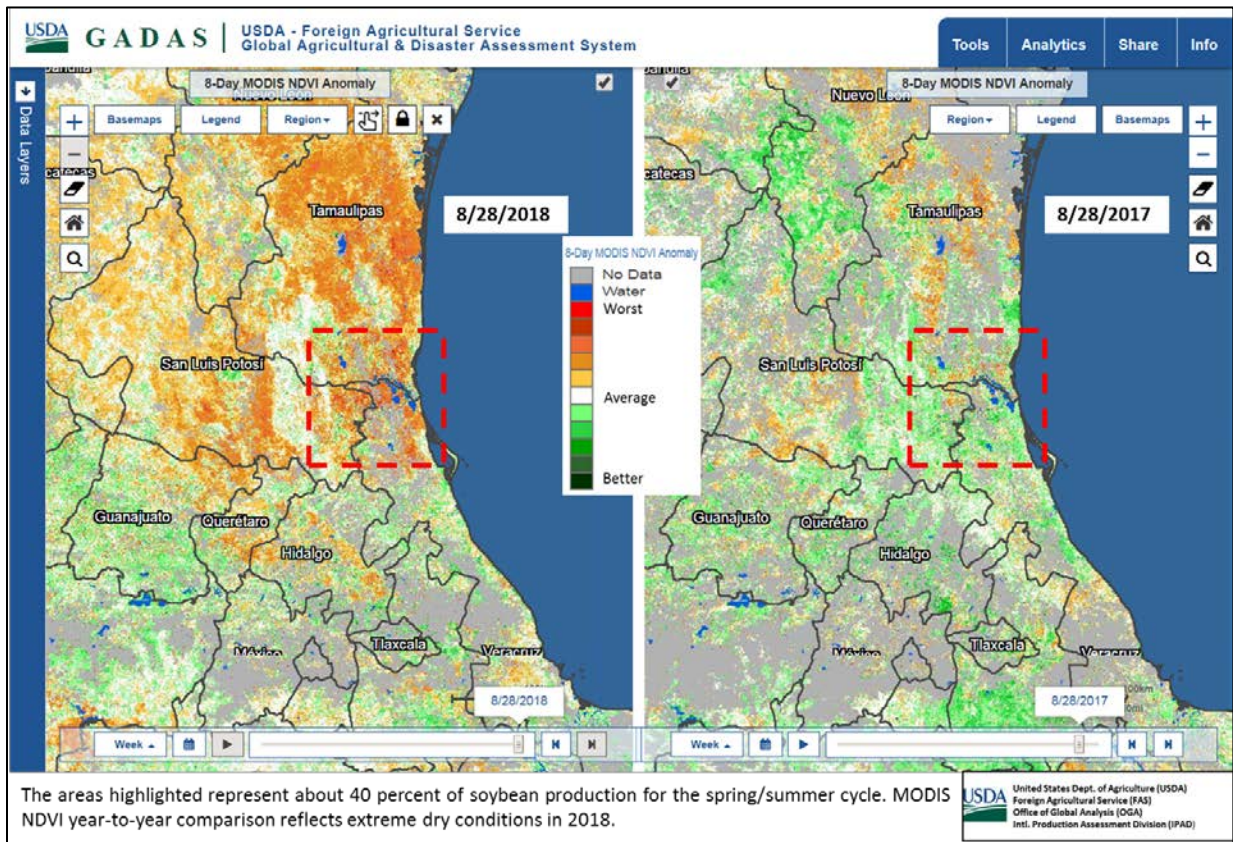
Area, yield, and production estimates for Russia winter wheat and spring wheat are available on [PSD Online](#). Select “Downloadable Data Sets” and open the zipped file for “Russia Wheat; Winter/Spring Area & Prod.” (For more information, please contact Mark.Lindeman@fas.usda.gov.)

Mexico Soybeans: Yield Estimate Reduced Due to Extreme Dryness

USDA estimates Mexico 2018/19 soybean production at 430,000 metric tons, down 12 percent from last month and down 1 percent from last year. Extreme dryness in Mexico’s main soybean areas, southern Tamaulipas and eastern San Luis Potosi, resulted in significant sowing delays and farmers opting to switch to alternative crops, most notably sorghum. Area is estimated at 260,000 hectares, down 4 percent from last month and down 1 percent from last year. Yield is estimated at 1.65 metric tons per hectare, down 9 percent from last month and unchanged from last year.

Mexico soybeans are planted in two cycles: fall/winter (November to February) followed by spring/summer (April to July), the latter representing 98 percent of total production. The top two soybean producing states for the spring/summer cycle are Tamaulipas and San Luis Potosi, which represent 43 percent and 18 percent of the cycle’s production, respectively. Soybean planting and development are dependent on seasonal rainfall, and nearly the entire crop in the spring/summer cycle is rainfed. After a favorable start to the rainy season, an extended dry period followed, resulting in sowing delays and farmers opting to plant sorghum.

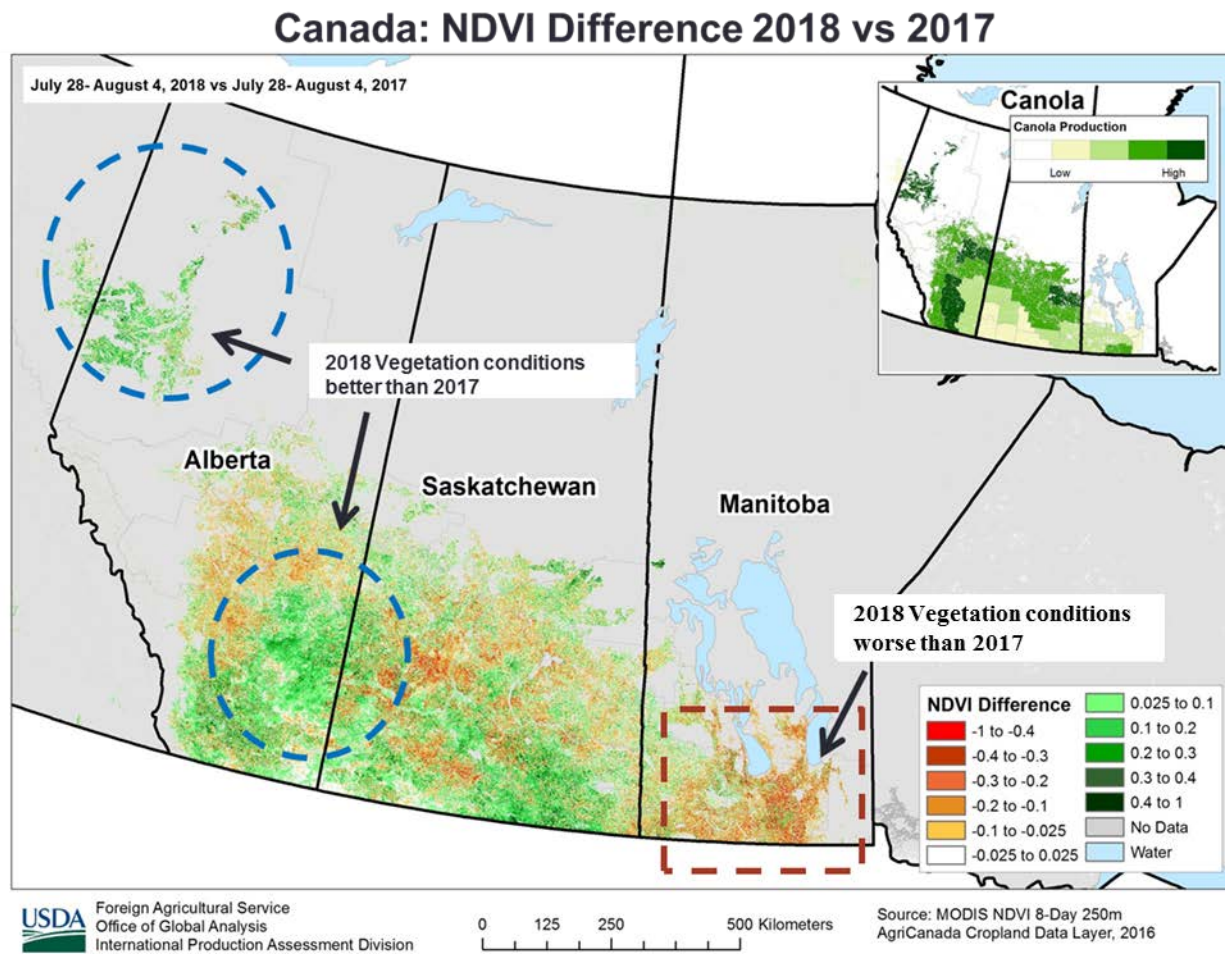
Official planting reports as of July 31, 2018 from Servicio de Información Agroalimentaria y Pesquera (SIAP) indicate national sown area for the 2018/19 spring/summer cycle is down 21 percent from the same time last year. In the states of Tamaulipas and San Luis Potosi planted area is down year-to-year by 25 percent and 38 percent, respectively.



MODIS Normalized Difference Vegetation Index (NDVI) year-to-year comparison depicts extremely poor vegetative conditions due to unseasonably dryness in the region for the 2018/19 spring/summer crop. Harvest for the spring/summer cycle begins in September and extends through February. (For more information, please contact Justin.Jenkins@fas.usda.gov).

Canada Rapeseed: Production Estimate Remains Unchanged

USDA estimates Canada 2018/19 rapeseed production at 21.1 million metric tons, unchanged from last month, but down 1 percent from last year. Harvested area is estimated at 9.1 million hectares, unchanged from last month but down 2 percent from last year. Yield is estimated at 2.32 metric tons per hectare, unchanged from last month but up 1 percent from last year.



Vegetation conditions in the Peace River Valley and southern Alberta (blue circle) are better than last year, however, conditions in southern Manitoba (red square) are worse than last year.

Statistics Canada (StatsCan) issued their preliminary September estimates, indicating a 10-percent year-to-year decline in production due to a 2-percent year-to-year decline in harvested area and a 9-percent year-to-year reduction in yields. Historically, the preliminary production estimates reported by StatsCan have been consistently lower than its final estimates. Rapeseed competes with wheat in the main producing provinces of Alberta, Saskatchewan and Manitoba, representing 35 percent, 49 percent and 15 percent of total production, respectively. Favorable weather throughout the main rapeseed growing regions has benefitted crop development during

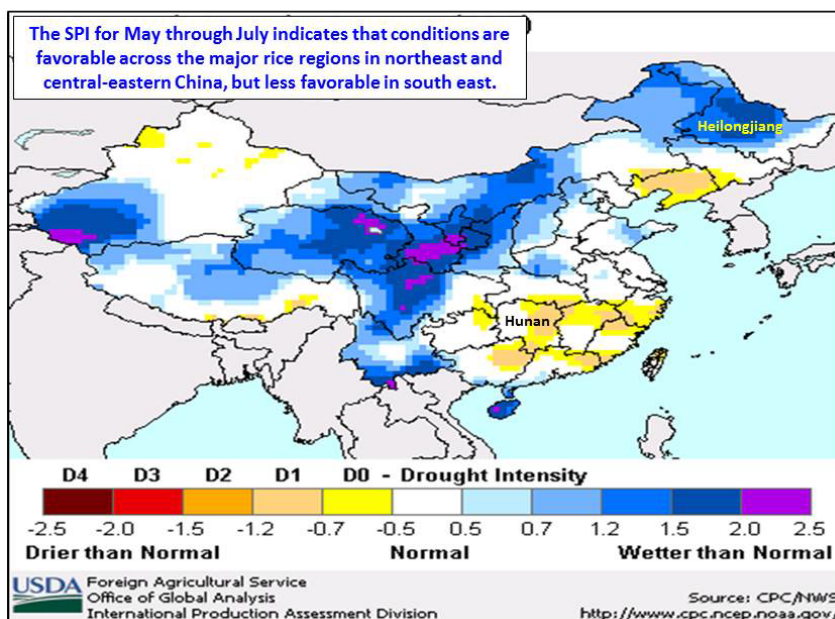
the growing season. Normalized Difference Vegetation Index (NDVI) year-to-year analysis depicts 2018/19 rapeseed conditions are nearly the same as 2017/18 in the main growing regions. (For more information please contact Justin.Jenkins@fas.usda.gov).

China Rice: 2018/19 Production Forecast to Decrease from Last Month

USDA forecasts China’s 2018/19 rice production at 140.8 million metric tons (mmt), down approximately 1 percent (1.4 mmt) from last month, down 5.2 mmt from last year, and down almost 3 percent from the 5-year average. Area is estimated at 29.5 million hectares (mha), unchanged from last month and down 2 percent from last year. Yield is forecast at 6.82 metric tons per hectare (rough basis), down 1 percent from last month, down over 1 percent from last year, and down slightly from the 5-year average. The forecast yield is significantly below the long-term trend.

The harvest of single-cropped rice is in progress; it started in August and continues through September. Single-cropped rice is predominantly *Japonica* and is grown mostly in the Yangtze Valley and northeastern provinces. It accounts for 66 percent of national production. According to most trade and government reports, single-crop rice yields are down sharply compared to last year. Late double-cropped rice is grown mostly in southern provinces and development ranges from the grain-fill stage to full maturity. Harvesting typically starts in October and continues through November. Rice is produced almost everywhere in China but the major production regions are in Heilongjiang (20 percent), Hunan (20 percent), Sichuan, Hubei, Anhui, Jiangxi, Guangxi, Guangdong, Jiangsu, Jilin, and Yunnan.

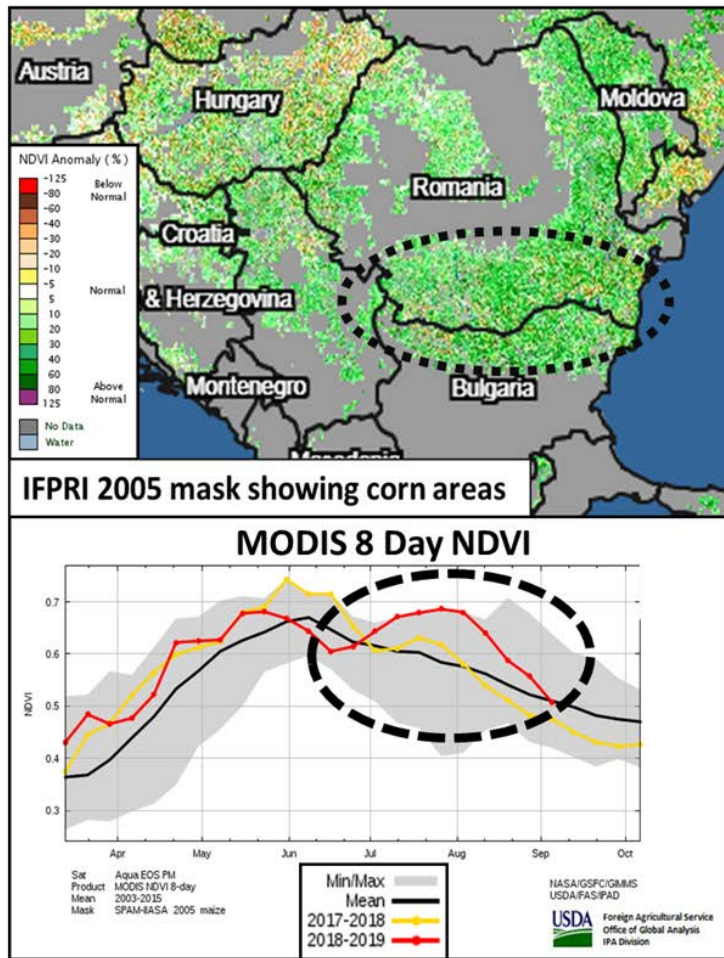
China: Standardized Precipitation Index (SPI), May 1 – July 31, 2018



Based on the Standardized Precipitation Index (SPI), the start of this year’s sowing season (May-June) was characterized by favorable weather and soil moisture across the major rice regions in the northeast, facilitating rapid planting and early crop establishment. In the southeast, however, weather conditions were mixed, ranging from normal to drier than normal. Rice is considered an essential food-security commodity, similar to wheat. Rice area does not significantly fluctuate from year to year, due to minimum support prices. (For more information, please contact Dath.Mita@fas.usda.gov)

EU Corn: Estimated Yields in Southeast Europe Push Crop Higher

Satellite-derived vegetation vigor in the Balkan Countries
8-Day MODIS NDVI Anomaly: August 4, 2018



The rise in the red line during July and August 2018 is indicative of the rise in the 2018 vegetation vigor in the corn area of Romania and Bulgaria along Danube River.

Bulgaria. Corn harvest in southeast Europe begins in September. *(For more information, please contact Bryan.Purcell@fas.usda.gov.)*

For country-specific area, yield, and production estimates within the European Union (EU), please go to PSD Online at <https://apps.fas.usda.gov/PSDOnline/app/index.html#/app/home>, and select “Downloadable Data Sets.” Select the zipped file for “EU Countries Area & Production.”

European Union (EU) corn production for 2018/19 is estimated at 60.8 million metric tons (mmt), up 1.0 mmt (2 percent) from last month, down 1.5 mmt (2 percent) from last year, and 6 percent below the 5-year average. Area is estimated at 8.3 million hectares, down slightly from last month, down 1 percent from last year, and 9 percent below the 5-year average. Yield is estimated at 7.37 tons per hectare, up 2 percent from last month, down 1 percent from last year, and 4 percent above the 5-year average.

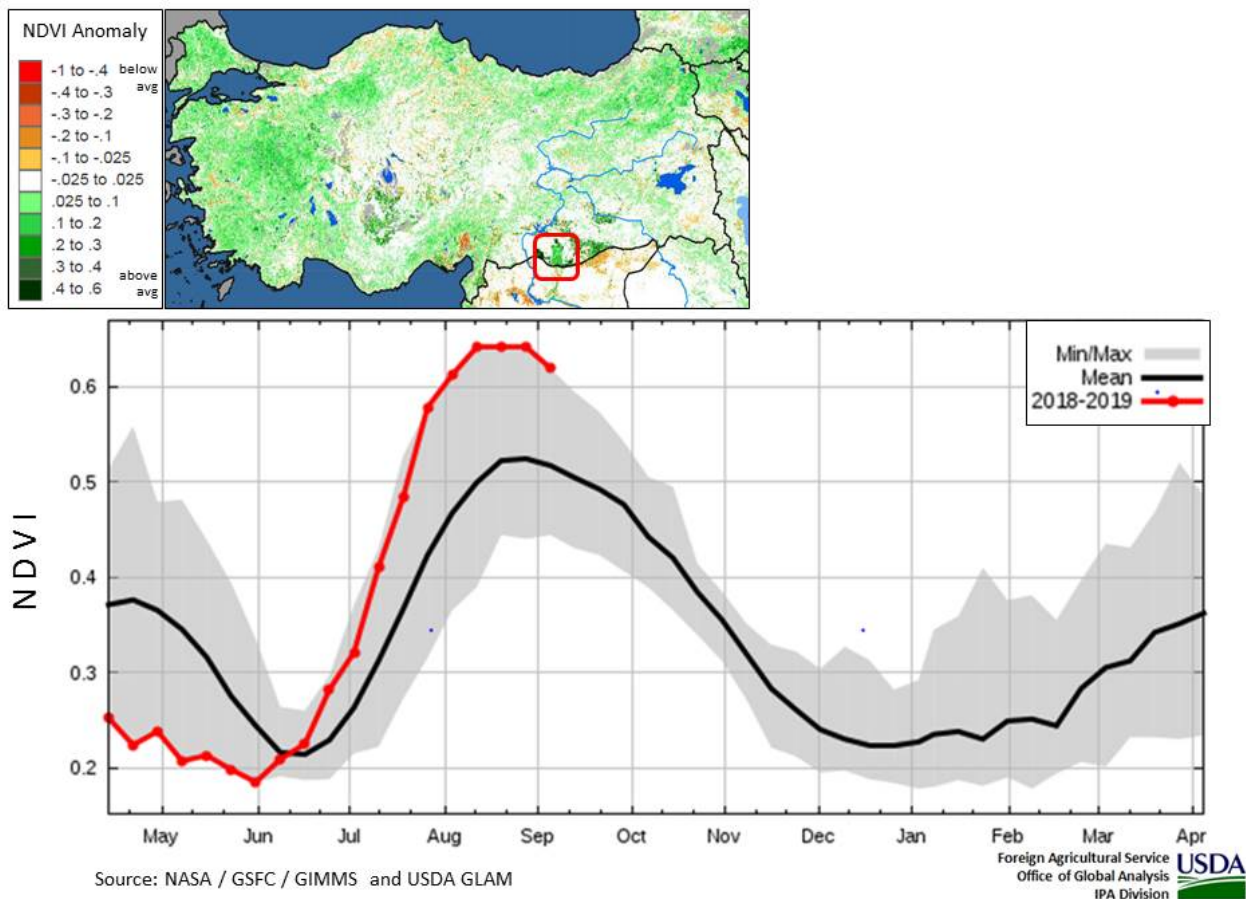
The month-to-month increase in estimated production is driven by favorable conditions in southeast Europe. Southeast Europe lacks access to significant levels of irrigation, therefore corn and other crops are predominantly rainfed and thus reliant on seasonal rainfall. This year, the combination of abundant precipitation and moderate temperatures is likely to lead to bumper or record crops. Estimated corn production in Romania, Bulgaria, and Hungary is up 0.3 mmt in each country. Record yields are forecast for Romania and

Turkey Corn: Record Yield Forecast Due to Excellent Growing Conditions

USDA forecasts Turkey's 2018/19 corn crop at 5.5 million metric tons (mmt), up 0.4 mmt from last month but down 0.5 mmt from last year. Harvested area forecast is unchanged from last month at 530,000 hectares, but down 12 percent from last year.

Precipitation in June as well as irrigation resources in the corn growing regions was above average for most of the planting window, followed by frequent and well-timed rains through development and maturation. The Normalized Difference Vegetation Index (NDVI) has been above average for the entire growing season. Yield is forecast at a record of 10.38 tons per hectare, up 8 percent from last month and up 4 percent from last year. Harvest begins in early September and usually continues until early November. *(For more information, please contact William.Baker@fas.usda.gov)*

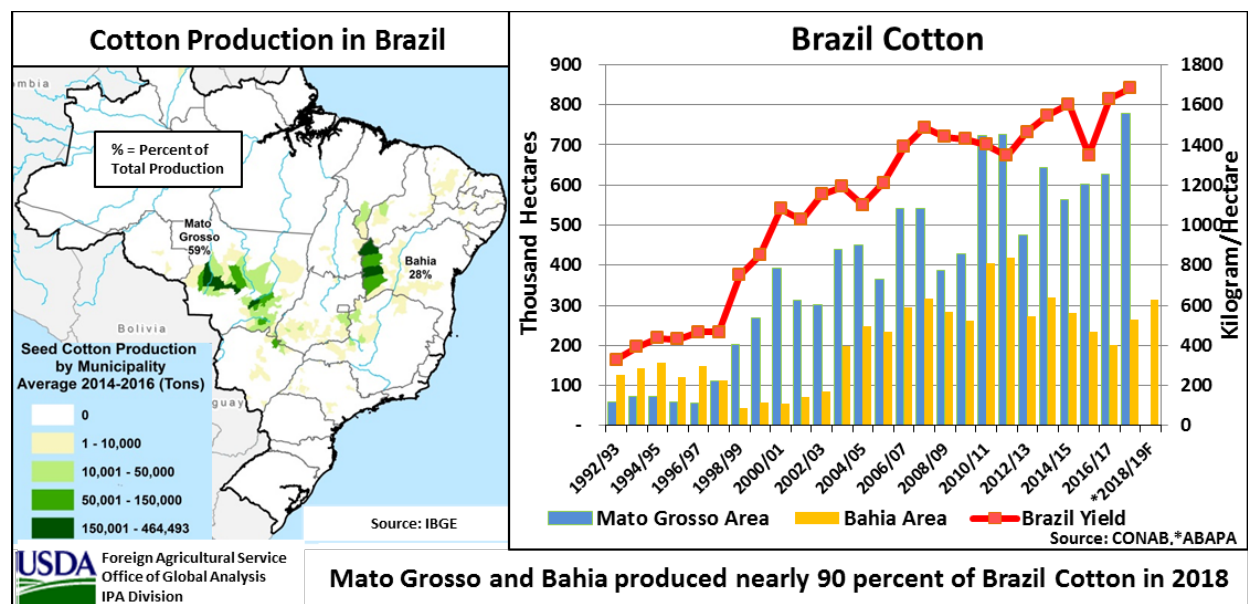
Vegetation Indices for Turkey's Major Corn Growing Region (Haran Plain)



Brazil Cotton: Forecast Production Up on Higher Yield

USDA forecast Brazil 2018/9 cotton production at a record 10.0 million 480-lb bales, up 0.5 million bales (5 percent) from last month, and up 0.8 million bales (8 percent) from last year. Harvested area is forecast at 1.3 million hectares, unchanged from last month and up 11 percent

from last year. Yield is forecast at 1,675 kilograms per hectare, up 5 percent from last month but down 2 percent from last year's record.



Planted area is forecast to increase for the second consecutive year as producers are encouraged by higher prices and by record yields in the previous two seasons. The major cotton-producing states of Mato Grosso (65 percent of Brazil's cotton production) and Bahia (24 percent) are forecast to continue increasing area. In Bahia, motivated producers continue the drive to return to higher production levels. ABAPA (Bahian Association of Cotton Producers) is forecasting a second year of aggressive growth, an 18-percent increase in area following a 31-percent increase last year. National yield is forecast near a 7-year trend that reflects gains through improved technology and efficiency in the cotton sector. Cotton is planted from November to February starting in Bahia and continuing in the center-west and southeast regions. The majority of the cotton crop is harvested from June to August. *(For more information, please contact Maria.Anulacion@fas.usda.gov).*

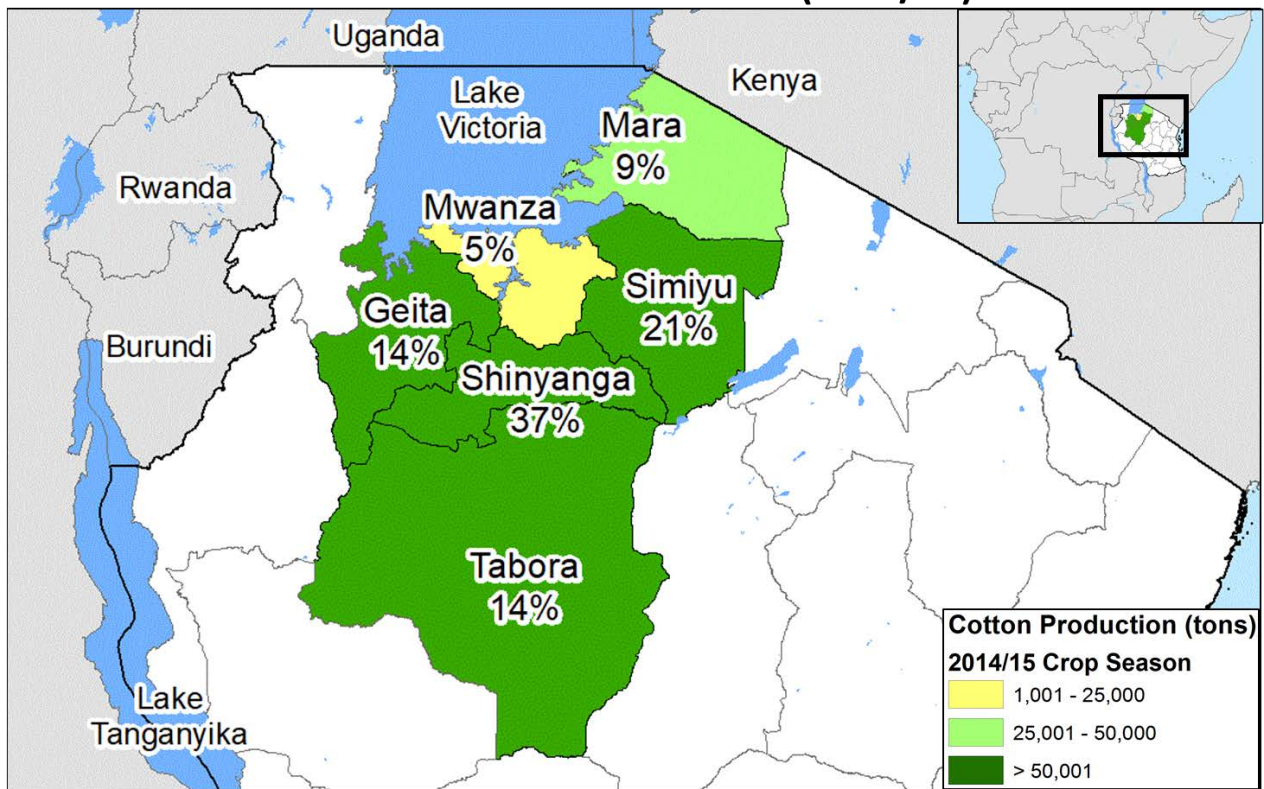
Tanzania Cotton: Production Nearly Doubles from Previous Year

Tanzania cotton production for 2018/19 is estimated at 425,000 480-lb bales, up 25,000 bales (6 percent) from last month, and up 195,000 bales (85 percent) from last year. Harvested area is estimated at 500,000 hectares, unchanged from last month but up 150,000 hectares (43 percent) from last year. Yield is estimated at 185 kilograms per hectare, up 6 percent from last month and up 29 percent from last year.

Early gin arrivals indicate that Tanzania's production will be nearly double last year's output. Planted area was up due to better prices and improved extension services for growing and marketing cotton. Above-average yields have been reported due to favorable weather but yields in some areas are lower than expected due to excessive rainfall and pest attacks which farmers could not control.

Cotton in Tanzania is grown mainly on small scale farms ranging from 0.5 to 10 hectares, with average farm size being 1.5 hectares. Nearly 99 percent of Tanzania’s cotton is grown in the north, near Lake Victoria, with Shinyanga and Simiyu regions producing nearly 60 percent of the national output. Cotton is planted in northern Tanzania in December, with harvesting beginning in late June or early July.

Tanzania Cotton Production (2014/15)



USDA Foreign Agricultural Service (FAS)
Office of Global Analysis (OGA)
International Production
Assessment Division (IPAD)

Data Source: Percentage values indicate percent production of total production during the 2014/15 crop season. Production data from the 2014/15 Annual Agricultural Sample Survey Report, Ministry of Agriculture, Livestock and Fisheries: National Bureau of Statistics.

(For more information, please contact Curt.Reynolds@fas.usda.gov)



World Agricultural Production
U.S. Department of Agriculture

Foreign Agricultural Service / Office of Global Analysis
International Production Assessment Division (IPAD)
Ag Box 1051, Room 4630, South Building
Washington, DC 20250-1051
<https://ipad.fas.usda.gov/>
Telephone: (202) 720-1662 Fax: (202) 720-1158

This report uses information from the Foreign Agricultural Service's (FAS) global network of agricultural attachés and counselors, official statistics of foreign governments and other foreign source materials, and the analysis of economic data and satellite imagery. Estimates of foreign area, yield, and production are from the International Production Assessment Division, FAS, and are reviewed by USDA's Inter-Agency Commodity Estimates Committee. Estimates of U.S. area, yield, and production are from USDA's National Agricultural Statistics Service. Numbers within the report may not add to totals because of rounding. This report reflects official USDA estimates released in the World Agricultural Supply and Demand Estimates (WASDE-581), September 12, 2018.

Printed copies are available from the National Technical Information Service. Download an order form at http://www.ntis.gov/products/specialty/usda/fas_a-g.asp, or call NTIS at 1-800-363-2068.

The FAS International Production Assessment Division prepared this report. The next issue of World Agricultural Production will be released after 12:00 p.m. Eastern Time, October 11, 2018.

Conversion Table

Metric tons to bushels

Wheat, soybeans	=	MT * 36.7437
Corn, sorghum, rye	=	MT * 39.36825
Barley	=	MT * 45.929625
Oats	=	MT * 68.894438

Metric tons to 480-lb bales

Cotton	=	MT * 4.592917
--------	---	---------------

Metric tons to hundredweight

Rice	=	MT * 22.04622
------	---	---------------

Area & weight

1 hectare	=	2.471044 acres
1 kilogram	=	2.204622 pounds



For further information, contact:
U.S. Department of Agriculture
Foreign Agricultural Service
Office of Global Analysis
International Production Assessment Division
Ag Box 1051, Room 4630, South Building
Washington, DC 20250-1051

Telephone: (202) 720-1662

Fax: (202) 720-1158

GENERAL INFORMATION

Director	Ronald Frantz	202-720-4056	ronald.frantz@fas.usda.gov
Deputy Director	Robert Tetrault	202-720-1071	robert.tetrault@fas.usda.gov
Administrative Assistant	Shelisa Johnson	202-720-1662	shelisa.johnson@fas.usda.gov
USDA Remote Sensing Advisor	Glenn Bethel	202-720-1280	glenn.bethel@fas.usda.gov
Sr. Analyst/Technical Lead	Curt Reynolds, Ph.D.	202-690-0134	curt.reynolds@fas.usda.gov
Sr. Analyst/ Satellite Imagery	Dath Mita, Ph.D.	202-720-7339	dath.mita@fas.usda.gov
Archives Manager/Technical Lead			
Sr. Analyst/ Global Special	Jim Crutchfield	202-690-0135	james.crutchfield@fas.usda.gov
Projects Manager/Technical Lead			
Sr. Analyst/Technical Lead	Vacant		
GIS Analyst/WAP Coordinator	Justin Jenkins	202-720-0419	justin.jenkins@fas.usda.gov

COUNTRY- AND REGION-SPECIFIC INFORMATION

South America, Argentina, Venezuela, and Colombia	Denise McWilliams, Ph.D.	202-720-0107	denise.mcwilliams@fas.usda.gov
Western and Central Europe, and North Africa	Bryan Purcell	202-690-0138	bryan.purcell@fas.usda.gov
Russia, Ukraine, Kazakhstan	Mark Lindeman	202-690-0143	mark.lindeman@fas.usda.gov
South Asia, Sri Lanka	Arnella Trent	202-720-0881	arnella.trent@fas.usda.gov
Bangladesh, India, and Nepal			
East Asia, China, and Japan	Dath Mita, Ph.D.	202-720-7339	dath.mita@fas.usda.gov
Sub-Saharan Africa,	Curt Reynolds, Ph.D.	202-690-0134	curt.reynolds@fas.usda.gov
Nigeria and South Africa			
S.E. Asia, Indonesia, Thailand, Malaysia, Cambodia and Vietnam	Vacant		
Central America, Mexico, and Western United States	Justin Jenkins	202-720-0419	justin.jenkins@fas.usda.gov
Australia, New Zealand, Pakistan	Jim Crutchfield	202-690-0135	james.crutchfield@fas.usda.gov
Papua New Guinea and South Pacific Islands			
Middle East, Central Asia, Afghanistan	Bill Baker, Ph.D.	202-260-8109	william.baker@fas.usda.gov
Iraq, Iran, and Syria			
Canada, Caribbean,	Katie McGaughey	202-720-9210	katie.mcgaughey@fas.usda.gov
Eastern United States			
Brazil	Maria Anulacion	202-720-6878	maria.anulacion@fas.usda.gov



The Foreign Agricultural Service (FAS) updates its production, supply and distribution (PSD) database for cotton, oilseeds, and grains at 12:00 p.m. on the day the *World Agricultural Supply and Demand Estimates* (WASDE) report is released. This circular is released by 12:15 p.m.

FAS Reports and Databases:

Current *World Market and Trade and World Agricultural Production* Reports:

<http://apps.fas.usda.gov/psdonline/psdDataPublications.aspx>

Archives *World Market and Trade and World Agricultural Production* Reports:

<http://usda.mannlib.cornell.edu/MannUsda/viewTaxonomy.do?taxonomyID=7>

Production, Supply and Distribution Database (PSD Online):

<http://apps.fas.usda.gov/psdonline/psdHome.aspx>

EU Countries Area & Production Estimates

<http://apps.fas.usda.gov/psdonline/psdDownload.aspx>

Global Agricultural Trade System (U.S. Exports and Imports):

<http://apps.fas.usda.gov/gats/default.aspx>

Export Sales Report:

<http://apps.fas.usda.gov/esrquery/>

Global Agricultural Information Network (Agricultural Attaché Reports):

<http://gain.fas.usda.gov/Pages/Default.aspx>

Other USDA Reports:

World Agricultural Supply and Demand Estimates (WASDE):

<http://www.usda.gov/oce/commodity/wasde/>

Economic Research Service:

<http://www.ers.usda.gov/topics/crops>

National Agricultural Statistics Service:

<http://www.nass.usda.gov/Publications/>

Table 01 World Crop Production Summary

Million Metric Tons

Commodity	World -	Total Foreign	North America			Former Soviet		European	Asia (WAP)					South America		Selected Other			All Others
			United States	Canada -	Mexico -	Russia -	Ukraine -		China -	India -	Indonesia	Pakistan	Thailand	Argentina	Brazil -	Australia	South Africa	Turkey -	
---Million metric tons---																			
Wheat																			
2016/17	752.1	689.3	62.8	32.1	3.9	72.5	26.8	nr	128.8	87.0	0.0	25.6	0.0	18.4	6.7	31.8	1.9	17.3	236.3
2017/18 prel.	758.3	710.9	47.4	30.0	3.5	85.0	27.0	nr	129.8	98.5	0.0	26.7	0.0	18.0	4.3	21.3	1.5	21.0	244.4
2018/19 proj.																			
Aug	729.6	678.6	51.1	32.5	2.8	68.0	25.5	nr	128.0	97.0	0.0	26.3	0.0	19.5	4.7	22.0	1.8	19.0	231.5
Sep	733.0	681.9	51.1	31.5	2.8	71.0	25.5	nr	128.0	99.7	0.0	26.3	0.0	19.5	4.7	20.0	1.8	19.0	232.1
Coarse Grains																			
2016/17	1,369.9	967.3	402.6	26.6	33.3	40.8	39.2	nr	226.9	43.5	10.9	6.6	5.3	48.6	101.6	17.3	18.1	10.8	338.0
2017/18 prel.	1,315.1	930.8	384.3	26.2	32.5	41.7	34.1	nr	223.4	47.0	11.4	6.6	5.1	39.3	84.8	11.9	14.3	13.0	339.6
2018/19 proj.																			
Aug	1,342.1	957.5	384.7	27.5	31.9	36.0	40.1	nr	232.8	43.9	11.9	6.8	5.2	48.9	97.5	12.3	14.1	13.1	335.6
Sep	1,347.2	956.4	390.8	27.0	31.7	36.5	39.7	nr	232.8	43.9	11.9	6.8	5.2	48.9	97.5	11.5	13.6	13.5	336.1
Rice, Milled																			
2016/17	486.9	479.8	7.1	0.0	0.2	0.7	0.0	nr	145.0	109.7	36.9	6.8	19.2	0.9	8.4	0.6	0.0	0.5	151.0
2017/18 prel.	491.6	485.9	5.7	0.0	0.2	0.6	0.0	nr	146.0	112.9	37.0	7.5	20.4	0.9	8.2	0.5	0.0	0.5	151.2
2018/19 proj.																			
Aug	487.6	480.9	6.7	0.0	0.2	0.6	0.0	nr	142.2	109.0	37.3	7.4	21.2	0.8	8.0	0.5	0.0	0.5	153.1
Sep	487.2	480.2	7.0	0.0	0.2	0.6	0.0	nr	140.8	110.0	37.3	7.4	21.2	0.8	8.0	0.5	0.0	0.5	152.8
Total Grains																			
2016/17	2,608.9	2,136.3	472.6	58.8	37.3	114.0	66.1	nr	500.7	240.2	47.8	39.1	24.5	67.8	116.7	49.7	20.0	28.5	725.4
2017/18 prel.	2,564.9	2,127.6	437.3	56.2	36.2	127.3	61.1	nr	499.2	258.4	48.4	40.7	25.4	58.2	97.3	33.7	15.8	34.5	735.2
2018/19 proj.																			
Aug	2,559.3	2,116.9	442.4	60.0	34.9	104.6	65.6	nr	503.0	249.9	49.2	40.5	26.4	69.2	110.2	34.8	15.9	32.6	720.1
Sep	2,567.4	2,118.5	448.8	58.5	34.7	108.1	65.2	nr	501.6	253.6	49.2	40.5	26.4	69.2	110.2	32.0	15.4	33.0	721.0
Oilseeds																			
2016/17	574.2	447.3	126.9	26.2	1.1	15.0	20.7	nr	56.5	37.3	12.8	3.7	0.9	60.2	117.6	5.7	2.3	2.8	84.5
2017/18 prel.	573.6	442.6	131.0	29.1	1.3	15.5	19.8	nr	60.4	34.1	13.3	4.0	1.0	42.5	123.3	5.3	2.6	3.2	87.4
2018/19 proj.																			
Aug	603.1	467.6	135.6	28.5	1.4	16.7	21.8	nr	60.5	36.6	13.6	4.2	1.0	62.0	124.4	4.4	2.5	3.6	86.4
Sep	604.7	466.2	138.4	28.2	1.4	16.7	21.8	nr	60.8	36.1	13.6	4.2	1.0	62.0	124.6	4.2	2.5	3.6	85.7
Cotton																			
2016/17	106.6	89.5	17.2	0.0	0.8	0.0	0.0	1.3	22.8	27.0	0.0	7.7	0.0	0.8	7.0	4.1	0.1	3.2	14.8
2017/18 prel.	123.5	102.6	20.9	0.0	1.6	0.0	0.0	1.5	27.5	29.0	0.0	8.2	0.0	0.8	9.2	4.7	0.2	4.0	15.8
2018/19 proj.																			
Aug	120.5	101.3	19.2	0.0	1.8	0.0	0.0	1.6	26.5	28.7	0.0	8.5	0.0	1.0	9.5	3.6	0.2	4.5	15.5
Sep	122.0	102.3	19.7	0.0	1.8	0.0	0.0	1.6	27.5	28.7	0.0	8.5	0.0	1.1	10.0	3.0	0.2	4.5	15.5

1/ Includes wheat, coarse grains, and rice (milled) shown above.

Table 02 Wheat Area, Yield, and Production

Country / Region	Area (Million hectares)				Yield (Metric tons per hectare)				Production (Million metric tons)				Change in Production			
	2016/17	Prel.	2018/19 Proj.		2016/17	Prel.	2018/19 Proj.		2016/17	Prel.	2018/19 Proj.		From last month		From last year	
		2017/18	Aug	Sep		2017/18	Aug	Sep		2017/18	Aug	Sep	MMT	Percent	MMT	Percent
World	222.20	219.52	217.26	216.61	3.38	3.45	3.36	3.38	752.08	758.27	729.63	733.00	3.37	0.46	-25.28	-3.33
United States	17.75	15.21	16.01	16.01	3.54	3.11	3.19	3.19	62.83	47.37	51.08	51.08	0.00	0.00	3.71	7.83
Total Foreign	204.45	204.31	201.25	200.60	3.37	3.48	3.37	3.40	689.25	710.90	678.55	681.92	3.37	0.50	-28.98	-4.08
European Union - 28	27.23	26.32	25.63	25.63	5.34	5.76	5.36	5.36	145.37	151.68	137.50	137.50	0.00	0.00	-14.18	-9.35
China	24.19	23.99	23.70	23.70	5.33	5.41	5.40	5.40	128.85	129.77	128.00	128.00	0.00	0.00	-1.77	-1.36
South Asia																
India	30.22	30.79	30.00	30.00	2.88	3.20	3.23	3.32	87.00	98.51	97.00	99.70	2.70	2.78	1.19	1.21
Pakistan	9.22	8.97	8.95	8.95	2.78	2.97	2.94	2.94	25.63	26.67	26.30	26.30	0.00	0.00	-0.37	-1.40
Afghanistan	2.55	2.55	2.50	2.50	2.00	1.96	1.60	1.60	5.10	5.00	4.00	4.00	0.00	0.00	-1.00	-20.00
Nepal	0.76	0.77	0.76	0.76	2.41	2.31	2.35	2.35	1.83	1.78	1.79	1.79	0.00	0.00	0.01	0.34
Former Soviet Union - 12																
Russia	27.00	27.34	25.50	26.00	2.69	3.11	2.67	2.73	72.53	84.99	68.00	71.00	3.00	4.41	-13.99	-16.46
Russia Winter	13.64	14.64	14.00	14.35	3.78	4.17	3.46	3.55	51.54	60.99	48.50	51.00	2.50	5.15	-9.99	-16.38
Russia Spring	13.37	12.70	11.50	11.65	1.57	1.89	1.70	1.72	20.99	24.01	19.50	20.00	0.50	2.56	-4.01	-16.68
Ukraine	6.46	6.64	6.90	6.90	4.15	4.06	3.70	3.70	26.79	26.98	25.50	25.50	0.00	0.00	-1.48	-5.49
Kazakhstan	12.37	11.91	11.50	11.20	1.21	1.24	1.26	1.34	14.99	14.80	14.50	15.00	0.50	3.45	0.20	1.34
Uzbekistan	1.40	1.40	1.40	1.40	4.96	4.93	4.29	4.29	6.94	6.90	6.00	6.00	0.00	0.00	-0.90	-13.04
Belarus	0.71	0.72	0.70	0.70	3.29	3.65	3.71	3.71	2.34	2.62	2.60	2.60	0.00	0.00	-0.02	-0.76
Canada	8.98	8.98	9.70	9.80	3.58	3.34	3.35	3.21	32.14	29.98	32.50	31.50	-1.00	-3.08	1.52	5.06
South America																
Argentina	5.56	5.60	6.00	6.00	3.31	3.21	3.25	3.25	18.40	18.00	19.50	19.50	0.00	0.00	1.50	8.33
Brazil	2.12	1.92	2.00	2.00	3.17	2.23	2.35	2.35	6.73	4.26	4.70	4.70	0.00	0.00	0.44	10.23
Uruguay	0.22	0.19	0.20	0.20	3.52	2.28	3.00	3.00	0.76	0.44	0.60	0.60	0.00	0.00	0.16	36.36
Australia	12.19	12.25	12.00	11.00	2.61	1.74	1.83	1.82	31.82	21.30	22.00	20.00	-2.00	-9.09	-1.30	-6.10
Africa																
Egypt	1.26	1.32	1.32	1.32	6.43	6.40	6.40	6.40	8.10	8.45	8.45	8.45	0.00	0.00	0.00	0.00
Morocco	2.41	3.32	3.10	3.10	1.13	2.14	2.65	2.65	2.73	7.09	8.20	8.20	0.00	0.00	1.11	15.62
Ethiopia	1.70	1.70	1.70	1.70	2.68	2.65	2.65	2.65	4.54	4.50	4.50	4.50	0.00	0.00	0.00	0.00
Algeria	1.30	1.60	1.60	1.60	1.54	1.50	1.88	1.88	2.00	2.40	3.00	3.00	0.00	0.00	0.60	25.00
Middle East																
Turkey	7.82	7.80	7.62	7.62	2.21	2.69	2.50	2.50	17.25	21.00	19.00	19.00	0.00	0.00	-2.00	-9.52
Iran	6.70	6.70	6.70	6.70	2.16	2.09	2.16	2.16	14.50	14.00	14.50	14.50	0.00	0.00	0.50	3.57
Iraq	2.35	2.23	2.30	2.30	1.80	1.81	1.74	1.74	4.23	4.03	4.00	4.00	0.00	0.00	-0.03	-0.62
Syria	1.10	1.10	1.10	1.10	2.18	2.00	1.82	1.82	2.40	2.20	2.00	2.00	0.00	0.00	-0.20	-9.09
Mexico	0.72	0.66	0.54	0.54	5.34	5.30	5.23	5.23	3.86	3.50	2.80	2.80	0.00	0.00	-0.70	-20.09
Serbia	0.61	0.54	0.68	0.68	4.92	4.26	4.74	4.74	3.00	2.30	3.20	3.20	0.00	0.00	0.90	39.13
Others	7.29	6.99	7.17	7.21	2.67	2.54	2.57	2.58	19.43	17.73	18.41	18.58	0.17	0.92	0.85	4.79

Table 03 Total Coarse Grain Area, Yield, and Production

Country / Region	Area (Million hectares)				Yield (Metric tons per hectare)				Production (Million metric tons)				Change in Production			
	2016/17	Prel.	2018/19 Proj.		2016/17	Prel.	2018/19 Proj.		2016/17	Prel.	2018/19 Proj.		From last month		From last year	
		2017/18	Aug	Sep		2017/18	Aug	Sep		2017/18	Aug	Sep	MMT	Percent	MMT	Percent
World	329.66	319.09	321.84	321.66	4.16	4.12	4.17	4.19	1,369.93	1,315.05	1,342.13	1,347.19	5.06	0.38	32.14	2.44
United States	39.20	36.74	36.61	36.61	10.27	10.46	10.51	10.67	402.61	384.26	384.67	390.79	6.13	1.59	6.54	1.70
Total Foreign	290.46	282.35	285.23	285.05	3.33	3.30	3.36	3.36	967.32	930.80	957.47	956.40	-1.07	-0.11	25.60	2.75
China	38.88	37.63	38.76	38.76	5.83	5.94	6.01	6.01	226.87	223.39	232.81	232.81	0.00	0.00	9.41	4.21
European Union	29.45	29.17	29.06	29.02	5.19	5.25	5.18	5.12	152.95	152.97	150.43	148.63	-1.80	-1.20	-4.34	-2.84
South America																
Brazil	18.62	17.71	18.63	18.63	5.46	4.79	5.23	5.23	101.58	84.79	97.49	97.49	0.00	0.00	12.69	14.97
Argentina	6.84	7.10	7.00	7.00	7.11	5.54	6.98	6.98	48.57	39.33	48.85	48.85	0.00	0.00	9.52	24.21
Former Soviet Union - 12																
Russia	15.14	14.74	14.33	14.43	2.69	2.83	2.51	2.53	40.77	41.71	35.98	36.48	0.50	1.39	-5.24	-12.56
Ukraine	7.82	7.59	7.44	7.44	5.01	4.49	5.39	5.34	39.22	34.07	40.10	39.70	-0.40	-1.00	5.62	16.51
Kazakhstan	2.33	2.49	2.63	2.96	1.90	1.79	1.76	1.84	4.43	4.45	4.63	5.46	0.83	17.95	1.00	22.53
Belarus	0.96	1.00	1.05	1.05	3.16	3.30	3.34	3.34	3.03	3.29	3.51	3.51	0.00	0.00	0.22	6.69
Africa																
Nigeria	14.05	13.80	13.80	13.80	1.36	1.38	1.40	1.40	19.11	19.05	19.30	19.30	0.00	0.00	0.25	1.31
South Africa	3.18	2.82	2.91	2.83	5.69	5.06	4.84	4.80	18.12	14.27	14.06	13.60	-0.46	-3.27	-0.67	-4.71
Tanzania	5.31	5.35	5.35	5.35	1.11	1.21	1.22	1.22	5.90	6.50	6.55	6.55	0.00	0.00	0.05	0.77
Burkina	3.83	3.85	3.85	3.85	1.09	0.97	1.14	1.14	4.17	3.73	4.40	4.40	0.00	0.00	0.67	18.06
Ethiopia	5.43	5.69	5.71	5.71	2.78	2.45	2.48	2.48	15.09	13.96	14.18	14.18	0.00	0.00	0.22	1.58
Egypt	0.97	1.02	1.02	1.02	7.05	7.09	7.09	7.09	6.86	7.26	7.26	7.26	0.00	0.00	0.00	0.00
Mali	4.63	3.95	3.95	3.95	1.30	1.71	1.24	1.24	6.01	6.76	4.90	4.90	0.00	0.00	-1.86	-27.46
India	25.18	23.57	24.18	24.18	1.73	1.99	1.82	1.81	43.47	46.97	43.89	43.87	-0.02	-0.05	-3.10	-6.60
Southeast Asia																
Indonesia	3.40	3.45	3.50	3.50	3.21	3.30	3.40	3.40	10.90	11.40	11.90	11.90	0.00	0.00	0.50	4.39
Philippines	2.69	2.57	2.64	2.64	3.01	3.11	3.14	3.14	8.09	7.98	8.30	8.30	0.00	0.00	0.32	4.01
Vietnam	1.10	1.05	0.85	0.85	4.60	4.65	4.65	4.65	5.06	4.88	3.95	3.95	0.00	0.00	-0.93	-19.06
Thailand	1.20	1.15	1.18	1.18	4.39	4.39	4.40	4.40	5.25	5.05	5.18	5.18	0.00	0.00	0.13	2.57
Mexico	9.34	8.95	9.11	9.06	3.56	3.63	3.50	3.50	33.26	32.51	31.89	31.69	-0.20	-0.63	-0.82	-2.53
Canada	4.82	4.73	4.96	4.96	5.52	5.54	5.55	5.45	26.62	26.24	27.53	27.03	-0.50	-1.82	0.79	3.00
Australia	6.38	5.31	5.76	5.51	2.71	2.24	2.14	2.09	17.27	11.91	12.35	11.51	-0.84	-6.80	-0.40	-3.38
Middle East																
Turkey	4.19	4.22	4.34	4.34	2.57	3.08	3.01	3.10	10.78	12.97	13.05	13.45	0.40	3.06	0.48	3.70
Iran	1.75	1.79	1.79	1.79	2.24	2.41	2.41	2.41	3.92	4.32	4.32	4.32	0.00	0.00	0.00	0.00
Others	72.98	71.66	71.44	71.24	1.51	1.55	1.55	1.57	110.04	111.04	110.69	112.12	1.42	1.28	1.08	0.97

World and Selected Countries and Regions; Coarse Grain includes: Barley, Corn, Millet, Mixed Grains, Oats, Rye and Sorghum

Table 04 Corn Area, Yield, and Production

Country / Region	Area (Million hectares)				Yield (Metric tons per hectare)				Production (Million metric tons)				Change in Production			
	2016/17	Prel.	2018/19 Proj.		2016/17	Prel.	2018/19 Proj.		2016/17	Prel.	2018/19 Proj.		From last month		From last year	
		2017/18	Aug	Sep		2017/18	Aug	Sep		2017/18	Aug	Sep	MMT	Percent	MMT	Percent
World	186.86	183.52	184.08	183.75	5.77	5.63	5.76	5.82	1,078.56	1,033.64	1,061.05	1,069.00	7.95	0.75	35.36	3.42
United States	35.11	33.47	33.09	33.09	10.96	11.08	11.20	11.38	384.78	370.96	370.51	376.62	6.10	1.65	5.66	1.52
Total Foreign	151.76	150.05	150.99	150.65	4.57	4.42	4.57	4.60	693.78	662.68	690.54	692.38	1.84	0.27	29.70	4.48
China	36.77	35.45	36.50	36.50	5.97	6.09	6.16	6.16	219.55	215.89	225.00	225.00	0.00	0.00	9.11	4.22
South America																
Brazil	17.60	16.60	17.50	17.50	5.60	4.94	5.40	5.40	98.50	82.00	94.50	94.50	0.00	0.00	12.50	15.24
Argentina	4.90	5.20	5.00	5.00	8.37	6.15	8.20	8.20	41.00	32.00	41.00	41.00	0.00	0.00	9.00	28.13
Bolivia	0.09	0.37	0.33	0.33	1.38	2.50	2.65	2.65	0.12	0.93	0.88	0.88	0.00	0.00	-0.05	-5.41
European Union	8.57	8.37	8.29	8.25	7.22	7.44	7.22	7.37	61.89	62.28	59.80	60.80	1.00	1.67	-1.48	-2.37
Africa																
South Africa	3.00	2.65	2.70	2.60	5.86	5.21	5.00	5.00	17.55	13.80	13.50	13.00	-0.50	-3.70	-0.80	-5.80
Nigeria	6.50	6.50	6.50	6.50	1.65	1.69	1.69	1.69	10.76	11.00	11.00	11.00	0.00	0.00	0.00	0.00
Ethiopia	2.14	2.23	2.25	2.25	3.42	3.14	3.16	3.16	7.30	7.00	7.10	7.10	0.00	0.00	0.10	1.43
Egypt	0.75	0.80	0.80	0.80	8.00	8.00	8.00	8.00	6.00	6.40	6.40	6.40	0.00	0.00	0.00	0.00
Tanzania	4.20	4.20	4.20	4.20	1.15	1.27	1.29	1.29	4.82	5.35	5.40	5.40	0.00	0.00	0.05	0.93
Malawi	1.67	1.70	1.70	1.70	1.42	2.04	1.76	1.76	2.37	3.46	3.00	3.00	0.00	0.00	-0.46	-13.39
Zambia	1.16	1.43	1.39	1.09	2.48	2.54	1.72	2.21	2.87	3.65	2.40	2.40	0.00	0.00	-1.25	-34.31
Kenya	2.34	2.10	2.15	2.15	1.43	1.40	1.49	1.49	3.34	2.95	3.20	3.20	0.00	0.00	0.25	8.47
Uganda	1.15	1.10	1.10	1.10	2.32	2.55	2.27	2.27	2.66	2.80	2.50	2.50	0.00	0.00	-0.30	-10.71
Zimbabwe	0.77	1.88	1.72	1.72	0.66	1.15	0.99	0.99	0.51	2.16	1.70	1.70	0.00	0.06	-0.46	-21.10
Former Soviet Union - 12																
Ukraine	4.24	4.43	4.50	4.50	6.60	5.44	6.89	6.89	27.97	24.12	31.00	31.00	0.00	0.00	6.89	28.55
Russia	2.78	2.70	2.45	2.45	5.51	4.90	4.90	4.90	15.31	13.23	12.00	12.00	0.00	0.00	-1.23	-9.29
South Asia																
India	9.63	9.22	9.20	9.20	2.69	3.12	2.83	2.83	25.90	28.72	26.00	26.00	0.00	0.00	-2.72	-9.47
Pakistan	1.35	1.30	1.32	1.32	4.53	4.69	4.77	4.77	6.10	6.10	6.30	6.30	0.00	0.00	0.20	3.28
Nepal	0.89	0.90	0.90	0.90	2.62	2.84	2.83	2.83	2.34	2.56	2.55	2.55	0.00	0.00	-0.01	-0.20
Southeast Asia																
Indonesia	3.40	3.45	3.50	3.50	3.21	3.30	3.40	3.40	10.90	11.40	11.90	11.90	0.00	0.00	0.50	4.39
Philippines	2.69	2.57	2.64	2.64	3.01	3.11	3.14	3.14	8.09	7.98	8.30	8.30	0.00	0.00	0.32	4.01
Vietnam	1.10	1.05	0.85	0.85	4.60	4.65	4.65	4.65	5.06	4.88	3.95	3.95	0.00	0.00	-0.93	-19.06
Thailand	1.17	1.12	1.15	1.15	4.45	4.45	4.46	4.46	5.20	5.00	5.13	5.13	0.00	0.00	0.13	2.60
Mexico	7.51	7.23	7.20	7.20	3.67	3.71	3.61	3.61	27.58	26.80	26.00	26.00	0.00	0.00	-0.80	-2.99
Canada	1.41	1.41	1.45	1.45	9.82	10.03	10.21	9.86	13.89	14.10	14.80	14.30	-0.50	-3.38	0.20	1.42
Turkey	0.57	0.60	0.53	0.53	9.65	10.00	9.62	10.38	5.50	6.00	5.10	5.50	0.40	7.84	-0.50	-8.33
Others	23.43	23.49	23.17	23.28	2.59	2.56	2.60	2.65	60.72	60.14	60.14	61.58	1.44	2.40	1.44	2.39

World and Selected Countries and Regions

Table 05 Barley Area, Yield, and Production

Country / Region	Area (Million hectares)				Yield (Metric tons per hectare)				Production (Million metric tons)				Change in Production			
	2016/17	Prel.	2018/19 Proj.		2016/17	Prel.	2018/19 Proj.		2016/17	Prel.	2018/19 Proj.		From last month		From last year	
		2017/18	Aug	Sep		2017/18	Aug	Sep		2017/18	Aug	Sep	MMT	Percent	MMT	Percent
World	49.29	48.12	48.96	49.09	2.99	3.00	2.95	2.91	147.17	144.27	144.37	142.73	-1.65	-1.14	-1.55	-1.07
United States	1.04	0.79	0.83	0.83	4.19	3.91	4.11	4.11	4.35	3.09	3.40	3.40	0.00	0.00	0.31	10.03
Total Foreign	48.26	47.33	48.13	48.26	2.96	2.98	2.93	2.89	142.81	141.18	140.97	139.33	-1.65	-1.17	-1.86	-1.31
European Union	12.32	12.14	12.10	12.10	4.87	4.86	4.89	4.76	59.98	59.06	59.15	57.65	-1.50	-2.54	-1.41	-2.39
Former Soviet Union - 12																
Russia	7.96	7.85	7.90	8.00	2.21	2.57	2.15	2.19	17.55	20.18	17.00	17.50	0.50	2.94	-2.68	-13.29
Ukraine	3.05	2.65	2.50	2.50	3.24	3.28	3.20	3.04	9.87	8.70	8.00	7.60	-0.40	-5.00	-1.10	-12.59
Kazakhstan	1.89	2.07	2.20	2.50	1.71	1.60	1.59	1.68	3.23	3.31	3.50	4.20	0.70	20.00	0.90	27.08
Belarus	0.45	0.45	0.50	0.50	2.78	3.14	3.40	3.40	1.25	1.42	1.70	1.70	0.00	0.00	0.28	19.72
Azerbaijan	0.36	0.32	0.35	0.35	2.69	2.56	2.79	2.79	0.95	0.82	0.98	0.98	0.00	0.00	0.16	18.90
Canada	2.27	2.11	2.35	2.35	3.90	3.74	3.74	3.74	8.84	7.90	8.80	8.80	0.00	0.00	0.90	11.39
Australia	4.83	3.90	4.30	4.00	2.79	2.28	2.05	1.95	13.51	8.90	8.80	7.80	-1.00	-11.36	-1.10	-12.36
Middle East																
Turkey	3.40	3.40	3.60	3.60	1.40	1.88	2.06	2.06	4.75	6.40	7.40	7.40	0.00	0.00	1.00	15.63
Iran	1.61	1.60	1.60	1.60	1.86	1.94	1.94	1.94	3.00	3.10	3.10	3.10	0.00	0.00	0.00	0.00
Iraq	1.20	1.07	1.00	1.00	1.29	1.24	1.00	1.00	1.55	1.33	1.00	1.00	0.00	0.00	-0.33	-24.53
Syria	0.88	0.80	0.80	0.80	0.82	0.97	0.63	0.63	0.72	0.78	0.50	0.50	0.00	0.00	-0.28	-35.65
Africa																
Ethiopia	0.96	1.20	1.20	1.20	2.11	1.75	1.81	1.81	2.03	2.10	2.17	2.17	0.00	0.00	0.07	3.33
Morocco	1.21	1.80	1.50	1.50	0.51	1.11	1.67	1.67	0.62	2.00	2.50	2.50	0.00	0.00	0.50	25.00
Algeria	0.90	0.76	0.90	0.90	1.11	1.27	1.56	1.56	1.00	0.97	1.40	1.40	0.00	0.00	0.43	44.63
Tunisia	0.28	0.36	0.34	0.34	1.34	1.31	1.31	1.31	0.38	0.47	0.45	0.45	0.00	0.00	-0.03	-5.32
South Africa	0.09	0.09	0.10	0.12	3.99	3.37	3.65	3.25	0.36	0.31	0.35	0.39	0.04	11.43	0.08	27.04
South America																
Argentina	0.87	0.94	1.00	1.00	3.79	4.00	4.00	4.00	3.30	3.74	4.00	4.00	0.00	0.00	0.26	6.95
Uruguay	0.19	0.15	0.17	0.17	3.57	2.52	4.00	4.00	0.68	0.39	0.66	0.66	0.00	0.00	0.28	71.43
Brazil	0.10	0.11	0.12	0.12	3.91	2.61	2.88	2.88	0.38	0.28	0.35	0.35	0.00	0.00	0.06	22.34
India	0.59	0.66	0.68	0.68	2.44	2.67	2.64	2.61	1.44	1.75	1.79	1.77	-0.02	-1.12	0.02	1.14
China	0.43	0.43	0.45	0.45	4.08	4.19	4.11	4.11	1.75	1.80	1.85	1.85	0.00	0.00	0.05	2.78
Mexico	0.33	0.36	0.36	0.36	2.96	2.81	2.78	2.78	0.98	1.00	1.00	1.00	0.00	0.00	0.00	-0.40
Afghanistan	0.22	0.25	0.25	0.25	1.83	1.60	1.40	1.40	0.40	0.40	0.35	0.35	0.00	0.00	-0.05	-12.50
Others	1.88	1.86	1.88	1.88	2.29	2.19	2.23	2.25	4.31	4.09	4.19	4.22	0.04	0.84	0.14	3.30

World and Selected Countries and Regions

Table 06 Oats Area, Yield, and Production

Country / Region	Area (Million hectares)				Yield (Metric tons per hectare)				Production (Million metric tons)				Change in Production			
	2016/17	Prel.	2018/19 Proj.		2016/17	Prel.	2018/19 Proj.		2016/17	Prel.	2018/19 Proj.		From last month		From last year	
		2017/18	Aug	Sep		2017/18	Aug	Sep		2017/18	Aug	Sep	MMT	Percent	MMT	Percent
World	9.67	9.51	9.54	9.57	2.50	2.47	2.47	2.43	24.18	23.44	23.55	23.29	-0.26	-1.10	-0.15	-0.63
United States	0.40	0.32	0.41	0.41	2.37	2.21	2.34	2.34	0.94	0.72	0.95	0.95	0.00	0.00	0.24	32.91
Total Foreign	9.27	9.18	9.14	9.17	2.51	2.47	2.47	2.44	23.24	22.72	22.60	22.34	-0.26	-1.15	-0.38	-1.69
European Union	2.57	2.68	2.68	2.68	3.13	3.03	3.21	3.10	8.05	8.11	8.60	8.30	-0.30	-3.49	0.19	2.38
Former Soviet Union - 12																
Russia	2.75	2.78	2.75	2.75	1.73	1.96	1.75	1.75	4.75	5.44	4.80	4.80	0.00	0.00	-0.64	-11.78
Ukraine	0.21	0.21	0.20	0.20	2.38	2.31	2.38	2.38	0.51	0.48	0.48	0.48	0.00	0.00	-0.01	-1.25
Belarus	0.15	0.15	0.16	0.16	2.67	3.33	2.88	2.88	0.39	0.50	0.46	0.46	0.00	0.00	-0.04	-8.00
Kazakhstan	0.21	0.21	0.22	0.25	1.60	1.34	1.40	1.39	0.34	0.29	0.30	0.34	0.04	13.33	0.06	19.30
Canada	0.93	1.05	1.00	1.00	3.49	3.55	3.45	3.45	3.23	3.73	3.45	3.45	0.00	0.00	-0.28	-7.58
South America																
Argentina	0.32	0.22	0.25	0.25	2.45	2.24	2.40	2.40	0.79	0.49	0.60	0.60	0.00	0.00	0.11	21.95
Brazil	0.29	0.34	0.35	0.35	2.84	1.86	2.18	2.18	0.83	0.63	0.77	0.77	0.00	0.00	0.14	21.45
Chile	0.14	0.11	0.14	0.14	5.20	5.29	5.00	5.00	0.71	0.57	0.68	0.68	0.00	0.00	0.10	18.21
Uruguay	0.03	0.03	0.02	0.02	1.58	1.52	1.58	1.58	0.04	0.04	0.04	0.04	0.00	0.00	0.00	0.00
Oceania																
Australia	1.03	0.74	0.70	0.70	2.20	1.51	1.57	1.57	2.27	1.12	1.10	1.10	0.00	0.00	-0.02	-1.79
New Zealand	0.01	0.01	0.01	0.01	5.38	5.67	5.33	5.33	0.04	0.03	0.03	0.03	0.00	0.00	0.00	-5.88
China	0.21	0.21	0.22	0.22	1.41	1.43	1.42	1.42	0.29	0.30	0.31	0.31	0.00	0.00	0.01	1.67
Africa																
Algeria	0.09	0.09	0.09	0.09	1.29	1.29	1.29	1.29	0.11	0.11	0.11	0.11	0.00	0.00	0.00	0.00
Morocco	0.05	0.05	0.05	0.05	1.44	1.44	1.40	1.40	0.07	0.07	0.06	0.06	0.00	0.00	0.00	-3.08
South Africa	0.04	0.03	0.03	0.03	1.60	1.83	1.83	1.83	0.06	0.06	0.06	0.06	0.00	0.00	0.00	0.00
Other Europe																
Norway	0.08	0.08	0.08	0.08	4.34	4.00	4.00	4.00	0.33	0.30	0.30	0.30	0.00	0.00	0.00	0.00
Serbia	0.03	0.03	0.03	0.03	2.17	2.17	2.17	2.17	0.07	0.07	0.07	0.07	0.00	0.00	0.00	0.00
Albania	0.01	0.01	0.01	0.01	2.08	2.08	2.08	2.08	0.03	0.03	0.03	0.03	0.00	0.00	0.00	0.00
Bosnia and Herzegovina	0.01	0.01	0.01	0.01	2.90	2.57	3.00	3.00	0.03	0.02	0.03	0.03	0.00	0.00	0.01	66.67
Turkey	0.10	0.11	0.10	0.10	2.27	2.21	2.30	2.30	0.23	0.25	0.23	0.23	0.00	0.00	-0.02	-8.00
Mexico	0.04	0.04	0.05	0.05	1.89	1.64	1.80	1.80	0.07	0.07	0.09	0.09	0.00	0.00	0.02	25.00
Others	0.02	0.01	0.01	0.01	1.93	1.86	1.79	1.79	0.03	0.03	0.03	0.03	0.00	0.00	0.00	-3.85

World and Selected Countries and Regions

Table 07 Rye Area, Yield, and Production

Country / Region	Area (Million hectares)				Yield (Metric tons per hectare)				Production (Million metric tons)				Change in Production			
	2016/17	Prel.	2018/19 Proj.		2016/17	Prel.	2018/19 Proj.		2016/17	Prel.	2018/19 Proj.		From last month		From last year	
		2017/18	Aug	Sep		2017/18	Aug	Sep		2017/18	Aug	Sep	MMT	Percent	MMT	Percent
World	4.14	4.01	3.78	3.78	2.98	3.06	2.92	2.79	12.33	12.28	11.04	10.53	-0.51	-4.62	-1.76	-14.30
United States	0.17	0.12	0.14	0.14	2.04	2.12	1.84	1.84	0.34	0.25	0.26	0.26	0.00	0.00	0.02	6.91
Total Foreign	3.97	3.90	3.64	3.63	3.02	3.09	2.96	2.83	11.99	12.04	10.78	10.27	-0.51	-4.73	-1.77	-14.73
European Union	1.92	1.94	1.90	1.90	3.89	3.82	3.68	3.42	7.44	7.42	7.00	6.50	-0.50	-7.14	-0.92	-12.43
Former Soviet Union - 12																
Russia	1.25	1.17	0.98	0.98	2.03	2.17	1.90	1.90	2.54	2.54	1.85	1.85	0.00	0.00	-0.69	-27.28
Belarus	0.24	0.26	0.25	0.25	2.70	2.62	2.60	2.60	0.65	0.67	0.65	0.65	0.00	0.00	-0.02	-2.99
Ukraine	0.15	0.17	0.15	0.15	2.72	2.97	2.76	2.76	0.39	0.51	0.40	0.40	0.00	0.00	-0.11	-21.57
Kazakhstan	0.04	0.03	0.03	0.02	1.14	1.26	1.17	1.14	0.04	0.04	0.04	0.03	-0.01	-28.57	-0.01	-35.90
Turkey	0.12	0.10	0.11	0.11	2.61	3.17	2.91	2.91	0.30	0.32	0.32	0.32	0.00	0.00	0.00	0.00
Canada	0.14	0.10	0.10	0.10	3.11	3.30	3.00	3.00	0.44	0.32	0.30	0.30	0.00	0.00	-0.02	-6.25
South America																
Chile	0.00	0.00	0.00	0.00	5.00	5.00	5.00	5.00	0.01	0.01	0.01	0.01	0.00	0.00	0.00	0.00
Argentina	0.04	0.04	0.05	0.05	1.93	2.12	2.11	2.11	0.08	0.09	0.10	0.10	0.00	0.00	0.01	9.20
Other Europe																
Bosnia and Herzegovina	0.00	0.00	0.00	0.00	3.25	3.67	3.67	3.67	0.01	0.01	0.01	0.01	0.00	0.00	0.00	0.00
Switzerland	0.00	0.00	0.00	0.00	5.50	5.50	5.50	5.50	0.01	0.01	0.01	0.01	0.00	0.00	0.00	0.00
Serbia	0.00	0.00	0.00	0.00	2.50	2.50	2.50	2.50	0.01	0.01	0.01	0.01	0.00	0.00	0.00	0.00
Australia	0.04	0.04	0.04	0.04	0.63	0.65	0.65	0.65	0.03	0.03	0.03	0.03	0.00	0.00	0.00	0.00
Others	0.03	0.04	0.04	0.04	1.30	1.72	1.72	1.72	0.04	0.06	0.06	0.06	0.00	0.00	0.00	0.00

World and Selected Countries and Regions

Table 08 Sorghum Area, Yield, and Production

Country / Region	Area (Million hectares)				Yield (Metric tons per hectare)				Production (Million metric tons)				Change in Production			
	2016/17	Prel.		2018/19 Proj.		2016/17	Prel.		2018/19 Proj.		2016/17	Prel.		2018/19 Proj.		
		2017/18	Aug	Sep	2017/18		Aug	Sep	2017/18	Aug		Sep	MMT	Percent	MMT	Percent
World	44.29	40.02	41.48	41.49	1.43	1.45	1.43	1.43	63.32	57.85	59.24	59.26	0.02	0.04	1.42	2.45
United States	2.49	2.04	2.14	2.14	4.89	4.53	4.45	4.46	12.20	9.24	9.54	9.56	0.03	0.28	0.32	3.46
Total Foreign	41.80	37.98	39.33	39.35	1.22	1.28	1.26	1.26	51.12	48.60	49.70	49.70	0.00	-0.01	1.10	2.25
Africa																
Nigeria	5.82	5.80	5.80	5.80	1.18	1.13	1.17	1.17	6.89	6.55	6.80	6.80	0.00	0.00	0.25	3.82
Ethiopia	1.88	1.82	1.82	1.82	2.52	2.23	2.25	2.25	4.75	4.05	4.10	4.10	0.00	0.00	0.05	1.23
Sudan	9.16	6.30	7.00	7.00	0.71	0.59	0.57	0.57	6.47	3.74	4.00	4.00	0.00	0.00	0.26	6.87
Burkina	1.73	1.67	1.80	1.80	0.96	0.82	1.00	1.00	1.66	1.37	1.80	1.80	0.00	0.00	0.43	31.77
Mali	1.56	1.35	1.35	1.35	0.89	1.26	0.96	0.96	1.39	1.71	1.30	1.30	0.00	0.00	-0.41	-23.75
Niger	3.61	3.70	3.70	3.70	0.50	0.53	0.46	0.46	1.81	1.94	1.70	1.70	0.00	0.00	-0.24	-12.55
Cameroon	0.86	0.85	0.85	0.85	1.56	1.65	1.65	1.65	1.34	1.40	1.40	1.40	0.00	0.00	0.00	0.00
Tanzania	0.78	0.80	0.80	0.80	0.97	1.00	1.00	1.00	0.76	0.80	0.80	0.80	0.00	0.00	0.00	0.00
Egypt	0.14	0.14	0.14	0.14	5.36	5.36	5.36	5.36	0.75	0.75	0.75	0.75	0.00	0.00	0.00	0.00
Uganda	0.40	0.35	0.35	0.35	0.79	0.94	0.97	0.97	0.32	0.33	0.34	0.34	0.00	0.00	0.01	3.03
Ghana	0.23	0.25	0.25	0.25	1.00	1.12	1.12	1.12	0.23	0.28	0.28	0.28	0.00	0.00	0.00	0.00
Mozambique	0.26	0.37	0.30	0.32	0.45	0.68	0.50	0.67	0.12	0.25	0.15	0.22	0.07	43.33	-0.04	-14.00
South Africa	0.04	0.03	0.06	0.06	3.62	3.50	2.50	2.50	0.15	0.11	0.15	0.15	0.00	0.00	0.05	42.86
Mexico	1.47	1.32	1.50	1.45	3.17	3.51	3.20	3.17	4.64	4.64	4.80	4.60	-0.20	-4.17	-0.04	-0.76
South America																
Argentina	0.70	0.70	0.70	0.70	4.86	4.29	4.50	4.50	3.40	3.00	3.15	3.15	0.00	0.00	0.15	5.00
Brazil	0.63	0.66	0.66	0.66	2.97	2.85	2.84	2.84	1.87	1.87	1.86	1.86	0.00	0.00	-0.01	-0.37
South Asia																
India	5.86	4.83	5.20	5.20	0.78	1.03	0.88	0.88	4.57	4.95	4.60	4.60	0.00	0.00	-0.35	-7.07
Pakistan	0.26	0.20	0.23	0.23	0.58	0.65	0.62	0.62	0.15	0.13	0.14	0.14	0.00	0.00	0.01	7.69
China	0.63	0.68	0.72	0.72	4.78	4.74	4.79	4.79	2.99	3.20	3.45	3.45	0.00	0.00	0.25	7.81
Australia	0.37	0.53	0.63	0.68	2.70	2.71	3.17	3.18	0.99	1.44	2.00	2.16	0.16	8.00	0.72	50.10
European Union	0.12	0.12	0.12	0.12	5.45	5.41	5.51	5.51	0.63	0.67	0.68	0.68	0.00	0.00	0.01	1.04
Others	5.32	5.52	5.36	5.35	0.99	0.99	1.02	1.01	5.26	5.44	5.45	5.42	-0.03	-0.53	-0.01	-0.22

World and Selected Countries and Regions

Table 09 Rice Area, Yield, and Production
World and Selected Countries and Regions

Country / Region	Area (Million hectares)				Yield (Metric tons per hectare)				Production (Million metric tons)				Change in Production			
	Prel.		2018/19 Proj.		Prel.		2018/19 Proj.		Prel.		2018/19 Proj.		From last month		From last year	
	2016/17	2017/18	Aug	Sep	2016/17	2017/18	Aug	Sep	2016/17	2017/18	Aug	Sep	MMT	Percent	MMT	Percent
World	161.47	161.62	161.55	161.46	4.50	4.54	4.51	4.51	486.89	491.57	487.57	487.16	-0.41	-0.08	-4.41	-0.90
United States	1.25	0.96	1.13	1.17	8.11	8.41	8.43	8.48	7.12	5.66	6.70	6.97	0.27	4.09	1.31	23.15
Total Foreign	160.22	160.66	160.42	160.28	4.47	4.52	4.48	4.48	479.78	485.91	480.87	480.19	-0.68	-0.14	-5.72	-1.18
East Asia																
China	30.18	30.18	29.50	29.50	6.86	6.91	6.89	6.82	144.95	145.99	142.20	140.80	-1.40	-0.98	-5.19	-3.55
Japan	1.57	1.56	1.56	1.56	6.94	6.87	6.69	6.86	7.93	7.79	7.60	7.79	0.19	2.50	0.00	0.04
Korea, South	0.78	0.76	0.71	0.71	7.18	7.01	7.05	7.05	4.20	3.97	3.73	3.73	0.00	0.00	-0.24	-6.09
Korea, North	0.47	0.48	0.50	0.50	5.49	5.09	4.92	4.92	1.67	1.57	1.60	1.60	0.00	0.00	0.03	1.72
South Asia																
India	43.99	43.92	43.50	43.50	3.74	3.86	3.76	3.79	109.70	112.91	109.00	110.00	1.00	0.92	-2.91	-2.58
Bangladesh	11.75	11.27	11.77	11.66	4.42	4.35	4.42	4.43	34.58	32.65	34.70	34.40	-0.30	-0.86	1.75	5.36
Pakistan	2.72	2.80	2.80	2.80	3.77	4.02	3.96	3.96	6.85	7.50	7.40	7.40	0.00	0.00	-0.10	-1.33
Nepal	1.50	1.49	1.50	1.50	3.48	3.34	3.33	3.33	3.48	3.31	3.33	3.33	0.00	0.00	0.02	0.60
Sri Lanka	0.69	0.77	0.90	0.90	4.36	4.30	4.30	4.30	2.03	2.25	2.63	2.63	0.00	0.00	0.38	17.04
Southeast Asia																
Indonesia	12.24	12.25	12.24	12.24	4.78	4.76	4.80	4.80	36.86	37.00	37.30	37.30	0.00	0.00	0.30	0.81
Vietnam	7.71	7.76	7.76	7.76	5.68	5.97	5.99	5.99	27.40	28.94	29.07	29.07	0.00	0.00	0.13	0.44
Thailand	10.25	10.68	11.14	11.14	2.84	2.89	2.88	2.88	19.20	20.37	21.20	21.20	0.00	0.00	0.83	4.07
Burma	7.03	7.10	7.15	7.15	2.81	2.90	2.93	2.93	12.65	13.20	13.40	13.40	0.00	0.00	0.20	1.52
Philippines	4.72	4.84	4.86	4.87	3.93	4.01	4.04	4.01	11.69	12.24	12.35	12.30	-0.05	-0.40	0.07	0.53
Cambodia	3.10	3.18	3.25	3.25	2.78	2.78	2.78	2.78	5.26	5.40	5.50	5.50	0.00	0.00	0.10	1.87
Laos	0.97	0.98	0.99	0.99	3.19	3.24	3.30	3.30	1.95	2.00	2.05	2.05	0.00	0.00	0.05	2.50
Malaysia	0.70	0.70	0.70	0.70	4.03	4.03	4.03	4.03	1.82	1.82	1.82	1.82	0.00	0.00	0.00	0.00
South America																
Brazil	1.98	1.97	1.96	1.96	6.22	6.12	6.02	6.02	8.38	8.21	8.02	8.02	0.00	0.00	-0.18	-2.24
Peru	0.42	0.44	0.43	0.41	7.54	7.06	7.35	7.35	2.19	2.12	2.18	2.10	-0.08	-3.67	-0.02	-0.94
Africa																
Egypt	0.85	0.76	0.59	0.59	8.18	8.18	8.13	8.13	4.80	4.30	3.30	3.30	0.00	0.00	-1.00	-23.26
Madagascar	1.48	1.43	1.43	1.43	2.59	2.18	2.53	2.53	2.44	1.98	2.30	2.30	0.00	0.00	0.32	16.13
Nigeria	3.00	3.20	3.20	3.20	2.00	1.88	1.88	1.88	3.78	3.78	3.78	3.78	0.00	0.00	0.00	0.00
European Union	0.44	0.43	0.42	0.42	6.80	6.81	6.89	6.89	2.08	2.04	2.00	2.00	0.00	0.00	-0.03	-1.62
Iran	0.63	0.63	0.63	0.63	4.03	4.16	4.12	4.12	1.66	1.72	1.70	1.70	0.00	0.00	-0.02	-0.93
Others	11.07	11.10	10.96	10.95	3.05	3.13	3.15	3.15	22.23	22.86	22.70	22.66	-0.04	-0.17	-0.20	-0.89

Yield is on a rough basis, before the milling process. Production is on a milled basis, after the milling process.

Table 10 Total Oilseed Area, Yield, and Production

World and Selected Countries and Regions

Country / Region	Area (Million hectares)				Yield (Metric tons per hectare)				Production (Million metric tons)				Change in Production			
	Prel.		2018/19 Proj.		Prel.		2018/19 Proj.		Prel.		2018/19 Proj.		From last month		From last year	
	2016/17	2017/18	Aug	Sep	2016/17	2017/18	Aug	Sep	2016/17	2017/18	Aug	Sep	MMT	Percent	MMT	Percent
World Total	--	--	--	--	--	--	--	--	574.23	573.63	603.12	604.67	1.55	0.26	31.04	5.41
Total Foreign	--	--	--	--	--	--	--	--	447.29	442.60	467.57	466.23	-1.35	-0.29	23.63	5.34
Oilseed, Copra	--	--	--	--	--	--	--	--	5.51	5.73	5.83	5.83	0.00	0.00	0.10	1.66
Oilseed, Palm Kernel	--	--	--	--	--	--	--	--	17.36	18.45	19.21	19.21	0.00	0.00	0.76	4.14
Major Oilseeds	234.28	244.22	251.14	250.97	2.35	2.25	2.30	2.31	551.35	549.45	578.08	579.63	1.55	0.27	30.18	5.49
United States	39.25	42.80	42.04	42.18	3.23	3.06	3.22	3.28	126.94	131.03	135.55	138.44	2.89	2.13	7.41	5.66
Foreign Oilseeds	195.04	201.43	209.10	208.79	2.18	2.08	2.12	2.11	424.42	418.41	442.53	441.19	-1.35	-0.30	22.77	5.44
South America	60.79	61.60	67.03	67.11	3.19	2.93	3.02	3.01	193.96	180.28	202.50	202.17	-0.34	-0.17	21.88	12.14
Brazil	35.03	36.51	39.05	39.05	3.35	3.37	3.18	3.19	117.47	123.18	124.29	124.45	0.16	0.13	1.27	1.03
Argentina	19.74	18.71	21.47	21.50	3.05	2.27	2.89	2.88	60.16	42.46	61.99	61.99	0.00	0.00	19.53	45.99
Paraguay	3.46	3.53	3.58	3.58	3.02	2.86	2.77	2.77	10.44	10.09	9.92	9.92	0.00	0.00	-0.17	-1.67
Bolivia	1.28	1.53	1.52	1.52	1.74	1.77	1.83	1.83	2.22	2.71	2.78	2.78	0.00	0.00	0.08	2.77
Uruguay	1.13	1.15	1.26	1.31	2.89	1.23	2.46	1.98	3.28	1.41	3.09	2.59	-0.50	-16.18	1.18	83.43
China	23.31	24.65	24.80	24.90	2.42	2.45	2.44	2.44	56.53	60.42	60.45	60.80	0.35	0.58	0.38	0.63
South Asia	36.95	37.35	38.99	38.49	1.10	1.01	1.04	1.04	40.65	37.71	40.45	39.90	-0.55	-1.36	2.18	5.79
India	33.82	33.98	35.53	35.03	1.08	0.98	1.01	1.01	36.52	33.29	35.84	35.29	-0.55	-1.53	2.00	6.00
Pakistan	2.78	3.01	3.10	3.10	1.34	1.33	1.35	1.35	3.71	4.01	4.19	4.19	0.00	0.00	0.19	4.67
European Union	11.79	12.36	12.42	12.37	2.71	2.83	2.59	2.57	31.96	34.98	32.17	31.80	-0.38	-1.17	-3.19	-9.11
Former Soviet Union - 12	22.54	23.96	25.28	25.26	1.77	1.69	1.72	1.72	39.91	40.38	43.47	43.51	0.04	0.09	3.12	7.74
Russia	10.20	10.66	11.75	11.75	1.47	1.45	1.42	1.42	14.99	15.48	16.70	16.70	0.00	0.00	1.22	7.88
Ukraine	8.71	9.17	9.35	9.35	2.38	2.16	2.33	2.33	20.74	19.81	21.80	21.80	0.00	0.00	1.99	10.06
Uzbekistan	1.18	1.25	1.20	1.20	1.19	1.12	1.00	1.00	1.40	1.40	1.20	1.20	0.00	0.00	-0.20	-14.29
Canada	10.52	12.23	11.68	11.68	2.49	2.38	2.44	2.41	26.25	29.10	28.46	28.16	-0.30	-1.05	-0.95	-3.26
Africa	19.73	19.74	19.60	19.75	0.93	0.96	0.95	0.95	18.40	18.98	18.59	18.68	0.09	0.47	-0.31	-1.62
Nigeria	3.57	3.61	3.61	3.61	1.04	1.08	1.08	1.08	3.72	3.90	3.90	3.90	0.00	0.00	0.00	0.00
South Africa	1.29	1.49	1.59	1.59	1.82	1.72	1.57	1.57	2.35	2.56	2.50	2.50	0.00	0.00	-0.05	-2.00
Tanzania	1.40	1.35	1.50	1.50	0.85	0.89	0.85	0.86	1.19	1.20	1.28	1.29	0.01	0.86	0.09	7.08
Southeast Asia	3.26	3.22	3.19	3.19	1.41	1.40	1.40	1.40	4.59	4.52	4.47	4.47	0.00	0.00	-0.06	-1.22
Indonesia	1.03	1.00	0.98	0.98	1.64	1.61	1.61	1.61	1.69	1.62	1.58	1.58	0.00	0.00	-0.04	-2.16
Burma	1.88	1.88	1.88	1.88	1.18	1.19	1.18	1.18	2.21	2.24	2.22	2.22	0.00	0.00	-0.02	-0.67
Australia	3.32	3.30	2.96	2.90	1.70	1.60	1.49	1.45	5.66	5.28	4.40	4.20	-0.20	-4.55	-1.08	-20.49
Turkey	1.11	1.25	1.34	1.34	2.49	2.53	2.68	2.68	2.76	3.17	3.58	3.58	0.00	0.00	0.42	13.14
Others	1.71	1.76	1.82	1.81	2.19	2.03	2.20	2.18	3.76	3.58	4.01	3.95	-0.06	-1.50	0.37	10.20

World Total and Total Foreign: (Major Oilseeds plus copra and palm kernel) Major Oilseeds: (soybeans, sunflowerseeds, peanuts(inshell), cottonseed and rapeseed)

Table 11 Soybean Area, Yield, and Production

Country / Region	Area (Million hectares)				Yield (Metric tons per hectare)				Production (Million metric tons)				Change in Production			
	2016/17	Prel.	2018/19 Proj.		2016/17	Prel.	2018/19 Proj.		2016/17	Prel.	2018/19 Proj.		From last month		From last year	
		2017/18	Aug	Sep		2017/18	Aug	Sep		2017/18	Aug	Sep	MMT	Percent	MMT	Percent
World	119.00	123.80	130.08	130.04	2.93	2.72	2.82	2.84	348.12	336.82	367.10	369.32	2.21	0.60	32.50	9.65
United States	33.47	36.23	35.96	35.96	3.49	3.30	3.47	3.55	116.92	119.52	124.81	127.73	2.92	2.34	8.21	6.87
Total Foreign	85.54	87.57	94.12	94.08	2.70	2.48	2.57	2.57	231.20	217.30	242.30	241.59	-0.71	-0.29	24.29	11.18
South America																
Brazil	33.90	35.10	37.50	37.50	3.38	3.40	3.21	3.21	114.60	119.50	120.50	120.50	0.00	0.00	1.00	0.84
Argentina	17.34	16.30	19.00	19.00	3.17	2.32	3.00	3.00	55.00	37.80	57.00	57.00	0.00	0.00	19.20	50.79
Paraguay	3.39	3.46	3.50	3.50	3.05	2.89	2.80	2.80	10.34	10.00	9.80	9.80	0.00	0.00	-0.20	-2.00
Bolivia	1.13	1.40	1.40	1.40	1.86	1.86	1.93	1.93	2.11	2.60	2.70	2.70	0.00	0.00	0.10	3.85
Uruguay	1.09	1.10	1.20	1.25	2.95	1.21	2.50	2.00	3.21	1.33	3.00	2.50	-0.50	-16.67	1.17	87.41
East Asia																
China	7.20	7.85	8.10	8.40	1.79	1.81	1.79	1.79	12.90	14.20	14.50	15.00	0.50	3.45	0.80	5.63
Korea, South	0.05	0.05	0.06	0.06	1.53	1.87	1.75	1.75	0.08	0.09	0.10	0.10	0.00	0.00	0.01	16.28
Korea, North	0.18	0.15	0.15	0.15	1.61	1.49	1.50	1.50	0.28	0.22	0.23	0.23	0.00	0.00	0.00	0.90
Japan	0.15	0.15	0.15	0.15	1.59	1.66	1.74	1.74	0.24	0.25	0.26	0.26	0.00	0.00	0.02	6.02
India	11.18	10.40	11.50	11.20	0.98	0.80	0.94	0.94	10.99	8.35	10.80	10.50	-0.30	-2.78	2.15	25.75
Canada	2.23	2.94	2.55	2.55	2.96	2.63	2.86	2.75	6.60	7.72	7.30	7.00	-0.30	-4.11	-0.72	-9.29
Former Soviet Union - 12																
Russia	2.12	2.57	2.85	2.85	1.48	1.41	1.37	1.37	3.13	3.62	3.90	3.90	0.00	0.00	0.28	7.71
Ukraine	1.86	1.98	1.85	1.85	2.31	1.97	2.27	2.27	4.29	3.89	4.20	4.20	0.00	0.00	0.31	7.97
European Union	0.80	0.93	0.95	0.93	3.00	2.88	2.92	2.90	2.41	2.67	2.78	2.70	-0.08	-2.70	0.03	1.24
Southeast Asia																
Indonesia	0.43	0.42	0.41	0.41	1.31	1.29	1.27	1.27	0.57	0.54	0.52	0.52	0.00	0.00	-0.02	-3.70
Vietnam	0.07	0.06	0.06	0.06	1.48	1.50	1.50	1.50	0.10	0.09	0.09	0.09	0.00	0.00	0.00	0.00
Thailand	0.03	0.04	0.03	0.03	1.78	1.57	1.47	1.47	0.06	0.06	0.05	0.05	0.00	0.00	-0.01	-9.09
Burma	0.15	0.15	0.15	0.15	1.07	1.07	1.07	1.07	0.16	0.16	0.16	0.16	0.00	0.00	0.00	0.00
Serbia	0.19	0.20	0.22	0.22	3.51	2.30	2.84	2.84	0.65	0.46	0.63	0.63	0.00	0.00	0.17	35.87
Mexico	0.28	0.26	0.27	0.26	1.85	1.65	1.81	1.65	0.52	0.43	0.49	0.43	-0.06	-12.24	0.00	-0.69
Africa																
South Africa	0.57	0.79	0.90	0.90	2.29	1.96	1.75	1.75	1.32	1.55	1.58	1.58	0.00	0.00	0.03	1.61
Nigeria	0.61	0.64	0.64	0.64	0.96	0.94	0.94	0.94	0.59	0.60	0.60	0.60	0.00	0.00	0.00	0.00
Zambia	0.14	0.23	0.23	0.18	1.94	1.56	1.33	1.83	0.27	0.35	0.30	0.32	0.02	6.67	-0.03	-8.83
Uganda	0.05	0.05	0.05	0.05	0.60	0.60	0.60	0.60	0.03	0.03	0.03	0.03	0.00	0.00	0.00	0.00
Middle East																
Iran	0.06	0.07	0.07	0.07	2.25	2.29	2.29	2.29	0.14	0.16	0.16	0.16	0.00	0.00	0.00	0.00
Turkey	0.03	0.02	0.03	0.03	3.33	3.75	3.81	3.81	0.10	0.09	0.10	0.10	0.00	0.00	0.01	10.00
Others	0.31	0.28	0.30	0.29	1.73	1.92	1.77	1.86	0.53	0.55	0.53	0.54	0.01	1.88	0.00	-0.55

World and Selected Countries and Regions

Table 12 Cottonseed Area, Yield, and Production

Country / Region	Area (Million hectares)				Yield (Metric tons per hectare)				Production (Million metric tons)				Change in Production			
	2016/17	Prel.	2018/19 Proj.		2016/17	Prel.	2018/19 Proj.		2016/17	Prel.	2018/19 Proj.		From last month		From last year	
		2017/18	Aug	Sep		2017/18	Aug	Sep		2017/18	Aug	Sep	MMT	Percent	MMT	Percent
World	29.07	32.76	32.12	32.23	1.34	1.38	1.38	1.39	39.09	45.05	44.37	44.85	0.49	1.10	-0.20	-0.45
United States	3.85	4.49	4.10	4.27	1.27	1.30	1.33	1.31	4.87	5.83	5.46	5.59	0.12	2.25	-0.24	-4.14
Total Foreign	25.22	28.26	28.01	27.96	1.36	1.39	1.39	1.40	34.21	39.23	38.90	39.27	0.36	0.93	0.04	0.10
South Asia																
India	10.85	12.40	11.90	11.90	1.06	0.99	1.02	1.02	11.46	12.31	12.19	12.19	0.00	0.00	-0.13	-1.03
Pakistan	2.40	2.60	2.70	2.70	1.40	1.38	1.41	1.41	3.35	3.60	3.80	3.80	0.00	0.00	0.20	5.56
China	2.90	3.40	3.35	3.35	3.03	3.18	3.10	3.22	8.80	10.80	10.40	10.80	0.40	3.85	0.00	0.00
Former Soviet Union - 12																
Uzbekistan	1.18	1.25	1.20	1.20	1.19	1.12	1.00	1.00	1.40	1.40	1.20	1.20	0.00	0.00	-0.20	-14.29
Turkmenistan	0.55	0.55	0.55	0.55	0.95	1.10	1.14	1.14	0.52	0.60	0.62	0.62	0.00	0.00	0.02	3.00
Tajikistan	0.17	0.19	0.19	0.19	1.02	0.97	0.91	0.91	0.17	0.18	0.17	0.17	0.00	0.00	-0.01	-3.89
Kazakhstan	0.12	0.13	0.12	0.12	0.97	1.00	1.06	1.06	0.11	0.13	0.13	0.13	0.00	0.00	0.00	1.60
South America																
Brazil	0.94	1.18	1.30	1.30	2.44	2.57	2.39	2.52	2.30	3.02	3.11	3.27	0.16	5.27	0.26	8.45
Argentina	0.24	0.35	0.38	0.40	1.16	0.87	1.02	0.96	0.28	0.30	0.38	0.38	0.00	0.00	0.08	26.40
Middle East																
Turkey	0.40	0.47	0.52	0.52	2.63	2.77	2.88	2.88	1.05	1.30	1.50	1.50	0.00	0.00	0.20	15.38
Syria	0.04	0.03	0.03	0.03	2.00	2.17	2.12	2.12	0.08	0.07	0.05	0.05	0.00	0.00	-0.01	-18.46
Iran	0.10	0.09	0.09	0.09	0.98	0.96	1.06	1.06	0.10	0.08	0.09	0.09	0.00	0.00	0.01	9.76
Australia	0.58	0.53	0.43	0.38	2.16	2.83	2.56	2.40	1.25	1.50	1.10	0.90	-0.20	-18.18	-0.60	-40.00
European Union	0.27	0.30	0.31	0.31	1.53	1.67	1.62	1.62	0.42	0.49	0.50	0.50	0.00	0.00	0.00	0.81
Africa																
Burkina	0.70	0.85	0.75	0.75	0.52	0.42	0.52	0.52	0.36	0.36	0.39	0.39	0.00	0.00	0.03	7.80
Mali	0.66	0.73	0.74	0.74	0.54	0.52	0.52	0.52	0.35	0.38	0.39	0.39	0.00	0.00	0.01	1.57
Cameroon	0.23	0.23	0.23	0.23	1.04	1.11	1.11	1.11	0.24	0.25	0.25	0.25	0.00	0.00	0.00	0.00
Cote d'Ivoire	0.35	0.37	0.37	0.37	0.48	0.57	0.52	0.52	0.17	0.21	0.19	0.19	0.00	0.00	-0.02	-7.62
Benin	0.42	0.45	0.44	0.44	0.66	0.62	0.62	0.62	0.27	0.28	0.27	0.27	0.00	0.00	-0.01	-2.85
Tanzania	0.40	0.35	0.50	0.50	0.21	0.29	0.35	0.37	0.09	0.10	0.18	0.19	0.01	6.29	0.09	84.16
Egypt	0.06	0.09	0.13	0.13	0.95	1.00	1.02	1.02	0.05	0.09	0.13	0.13	0.00	0.00	0.04	40.66
Nigeria	0.28	0.27	0.27	0.27	0.36	0.38	0.38	0.38	0.10	0.10	0.10	0.10	0.00	0.00	0.00	0.00
Uganda	0.07	0.08	0.08	0.08	1.49	1.45	1.45	1.45	0.11	0.11	0.11	0.11	0.00	0.00	0.00	0.00
Zimbabwe	0.21	0.20	0.23	0.23	0.25	0.43	0.38	0.38	0.05	0.09	0.09	0.09	0.00	0.00	0.00	2.35
Sudan	0.10	0.12	0.12	0.12	1.93	2.03	2.13	2.13	0.19	0.24	0.26	0.26	0.00	0.00	0.01	5.35
Mexico	0.10	0.21	0.23	0.23	2.50	2.53	2.58	2.58	0.26	0.53	0.59	0.59	0.00	0.00	0.07	12.50
Burma	0.24	0.25	0.24	0.24	1.17	1.24	1.23	1.23	0.29	0.31	0.30	0.30	0.00	0.00	-0.02	-4.84
Others	0.70	0.64	0.65	0.63	0.59	0.62	0.66	0.67	0.42	0.40	0.43	0.42	-0.01	-2.80	0.02	5.04

World and Selected Countries and Regions

Table 13 Peanut Area, Yield, and Production

Country / Region	Area (Million hectares)				Yield (Metric tons per hectare)				Production (Million metric tons)				Change in Production			
	2016/17	Prel.	2018/19 Proj.		2016/17	Prel.	2018/19 Proj.		2016/17	Prel.	2018/19 Proj.		From last month		From last year	
		2017/18	Aug	Sep		2017/18	Aug	Sep		2017/18	Aug	Sep	MMT	Percent	MMT	Percent
World	26.71	26.32	26.03	25.92	1.68	1.73	1.71	1.70	44.86	45.56	44.58	43.93	-0.65	-1.46	-1.63	-3.58
United States	0.62	0.72	0.59	0.56	4.07	4.56	4.67	4.65	2.53	3.28	2.76	2.61	-0.15	-5.39	-0.67	-20.36
Total Foreign	26.09	25.60	25.44	25.35	1.62	1.65	1.64	1.63	42.33	42.28	41.82	41.32	-0.50	-1.20	-0.96	-2.28
China	4.73	4.95	5.00	4.90	3.66	3.62	3.62	3.63	17.29	17.90	18.10	17.80	-0.30	-1.66	-0.10	-0.56
Africa																
Nigeria	2.68	2.70	2.70	2.70	1.13	1.19	1.19	1.19	3.03	3.20	3.20	3.20	0.00	0.00	0.00	0.00
Sudan	2.32	1.80	1.80	1.80	0.79	0.78	0.78	0.78	1.83	1.40	1.40	1.40	0.00	0.00	0.00	0.00
Senegal	1.15	1.25	1.10	1.10	0.82	1.13	0.91	0.91	0.95	1.41	1.00	1.00	0.00	0.00	-0.41	-29.18
Cameroon	0.45	0.43	0.43	0.43	1.65	1.40	1.40	1.40	0.75	0.60	0.60	0.60	0.00	0.00	0.00	0.00
Ghana	0.34	0.34	0.34	0.34	1.24	1.31	1.31	1.31	0.42	0.44	0.44	0.44	0.00	0.00	0.00	0.00
Chad	0.97	0.95	0.95	0.95	1.07	1.05	1.05	1.05	1.04	1.00	1.00	1.00	0.00	0.00	0.00	0.00
Malawi	0.37	0.37	0.37	0.37	0.74	0.88	0.88	0.88	0.28	0.33	0.33	0.33	0.00	0.00	0.00	0.00
Congo (Kinshasa)	0.50	0.50	0.50	0.50	0.85	0.85	0.85	0.85	0.42	0.42	0.42	0.42	0.00	0.00	0.00	0.00
Niger	0.77	0.75	0.75	0.75	0.59	0.53	0.53	0.53	0.45	0.40	0.40	0.40	0.00	0.00	0.00	0.00
Mali	0.43	0.38	0.38	0.38	0.87	0.87	1.07	1.07	0.37	0.33	0.40	0.40	0.00	0.00	0.08	23.08
Uganda	0.43	0.43	0.43	0.43	0.71	0.71	0.71	0.71	0.30	0.30	0.30	0.30	0.00	0.00	0.00	0.00
Burkina	0.42	0.43	0.43	0.43	0.80	0.81	0.81	0.81	0.34	0.35	0.35	0.35	0.00	0.00	0.00	0.00
Guinea	0.27	0.30	0.30	0.30	1.39	1.20	1.20	1.20	0.38	0.36	0.36	0.36	0.00	0.00	0.00	0.00
Egypt	0.06	0.06	0.06	0.06	3.20	3.20	3.20	3.20	0.21	0.21	0.21	0.21	0.00	0.00	0.00	0.00
Central African Republic	0.11	0.10	0.10	0.10	1.21	1.50	1.50	1.50	0.14	0.15	0.15	0.15	0.00	0.00	0.00	0.00
South Africa	0.06	0.06	0.06	0.06	2.20	1.27	1.64	1.64	0.12	0.07	0.09	0.09	0.00	0.00	0.02	28.57
Mozambique	0.40	0.37	0.29	0.38	0.28	0.32	0.38	0.34	0.11	0.12	0.11	0.13	0.02	18.18	0.01	8.33
Cote d'Ivoire	0.08	0.08	0.08	0.08	1.35	1.38	1.38	1.38	0.11	0.11	0.11	0.11	0.00	0.00	0.00	0.00
Benin	0.16	0.15	0.15	0.15	0.86	0.93	0.93	0.93	0.14	0.14	0.14	0.14	0.00	0.00	0.00	0.00
South Asia																
India	5.34	5.00	5.20	5.00	1.25	1.30	1.15	1.15	6.70	6.50	6.00	5.75	-0.25	-4.17	-0.75	-11.54
Pakistan	0.09	0.09	0.10	0.10	0.90	0.94	0.95	0.95	0.09	0.09	0.09	0.09	0.00	0.00	0.00	2.27
Southeast Asia																
Indonesia	0.60	0.58	0.57	0.57	1.87	1.85	1.86	1.86	1.12	1.08	1.06	1.06	0.00	0.00	-0.02	-1.40
Burma	0.89	0.89	0.89	0.89	1.55	1.55	1.55	1.55	1.38	1.38	1.38	1.38	0.00	0.00	0.00	0.00
Vietnam	0.20	0.19	0.19	0.19	2.37	2.37	2.37	2.37	0.46	0.45	0.45	0.45	0.00	0.00	0.00	0.00
Thailand	0.02	0.02	0.02	0.02	1.67	1.67	1.67	1.67	0.04	0.04	0.04	0.04	0.00	0.00	0.00	0.00
South America																
Argentina	0.32	0.36	0.33	0.33	3.98	2.18	3.24	3.24	1.29	0.79	1.07	1.07	0.00	0.00	0.28	35.10
Brazil	0.13	0.14	0.15	0.15	3.61	3.69	3.50	3.50	0.47	0.51	0.53	0.53	0.00	0.00	0.01	2.34
Mexico	0.06	0.06	0.06	0.06	1.71	1.70	1.70	1.70	0.10	0.10	0.10	0.10	0.00	0.00	0.00	0.00
Others	1.75	1.88	1.74	1.86	1.16	1.13	1.16	1.10	2.04	2.13	2.02	2.04	0.03	1.34	-0.08	-3.91

Table 14 Sunflowerseed Area, Yield, and Production

Country / Region	Area (Million hectares)				Yield (Metric tons per hectare)				Production (Million metric tons)				Change in Production						
	2016/17	Prel.		2018/19 Proj.		2016/17	Prel.		2018/19 Proj.		2016/17	Prel.		2018/19 Proj.		From last month		From last year	
		2017/18	Aug	Sep	2017/18		Aug	Sep	2017/18	Aug		Sep	MMT	Percent	MMT	Percent			
World	25.41	25.58	26.33	26.29	1.89	1.86	1.89	1.90	47.97	47.46	49.88	49.83	-0.05	-0.10	2.37	5.00			
United States	0.62	0.54	0.57	0.57	1.94	1.81	1.76	1.76	1.20	0.98	1.00	1.00	0.00	0.00	0.02	1.83			
Total Foreign	24.79	25.04	25.76	25.72	1.89	1.86	1.90	1.90	46.76	46.47	48.88	48.83	-0.05	-0.10	2.36	5.07			
Former Soviet Union - 12																			
Russia	7.18	7.15	7.50	7.50	1.51	1.45	1.47	1.47	10.86	10.36	11.00	11.00	0.00	0.00	0.64	6.16			
Ukraine	6.40	6.40	6.50	6.50	2.38	2.14	2.31	2.31	15.20	13.70	15.00	15.00	0.00	0.00	1.30	9.49			
Kazakhstan	0.81	0.88	0.93	0.93	0.94	1.02	1.08	1.08	0.76	0.90	1.00	1.00	0.00	0.00	0.10	10.74			
European Union	4.13	4.31	4.33	4.29	2.08	2.25	2.24	2.24	8.60	9.68	9.70	9.60	-0.10	-1.03	-0.08	-0.82			
South America																			
Argentina	1.82	1.68	1.75	1.75	1.95	2.11	2.00	2.00	3.55	3.53	3.50	3.50	0.00	0.00	-0.03	-0.96			
Uruguay	0.04	0.05	0.06	0.06	1.50	1.56	1.61	1.61	0.07	0.08	0.09	0.09	0.00	0.00	0.01	15.38			
Bolivia	0.14	0.13	0.12	0.12	0.80	0.80	0.70	0.70	0.11	0.11	0.08	0.08	0.00	0.00	-0.03	-23.81			
Brazil	0.06	0.10	0.10	0.10	1.65	1.54	1.55	1.55	0.10	0.15	0.16	0.16	0.00	0.00	0.01	4.03			
Paraguay	0.03	0.03	0.03	0.03	1.60	1.66	1.69	1.69	0.05	0.05	0.05	0.05	0.00	0.00	0.00	1.89			
China	1.15	1.25	1.25	1.25	2.59	2.50	2.60	2.60	2.99	3.12	3.25	3.25	0.00	0.00	0.13	4.17			
South Asia																			
India	0.38	0.33	0.43	0.43	0.72	0.84	0.81	0.81	0.28	0.28	0.35	0.35	0.00	0.00	0.07	26.35			
Pakistan	0.07	0.08	0.07	0.07	1.07	1.13	1.07	1.07	0.08	0.09	0.08	0.08	0.00	0.00	-0.02	-16.67			
Middle East																			
Turkey	0.60	0.70	0.73	0.73	2.20	2.21	2.40	2.40	1.32	1.55	1.74	1.74	0.00	0.00	0.19	12.26			
Iran	0.04	0.04	0.04	0.04	0.98	1.08	1.08	1.08	0.04	0.04	0.04	0.04	0.00	0.00	0.00	0.00			
Israel	0.01	0.01	0.01	0.01	1.60	1.60	1.60	1.60	0.02	0.02	0.02	0.02	0.00	0.00	0.00	0.00			
Africa																			
Egypt	0.01	0.01	0.01	0.01	2.43	2.38	2.38	2.38	0.02	0.02	0.02	0.02	0.00	0.00	0.00	0.00			
Morocco	0.02	0.02	0.02	0.02	1.29	1.29	1.29	1.29	0.03	0.03	0.03	0.03	0.00	0.00	0.00	0.00			
South Africa	0.64	0.61	0.60	0.60	1.37	1.42	1.27	1.27	0.87	0.86	0.76	0.76	0.00	0.00	-0.10	-11.63			
Burma	0.60	0.60	0.60	0.60	0.65	0.65	0.65	0.65	0.39	0.39	0.39	0.39	0.00	0.00	0.00	0.00			
Canada	0.03	0.03	0.03	0.03	1.82	2.23	2.20	2.20	0.05	0.06	0.06	0.06	0.00	0.00	0.00	-5.17			
Australia	0.03	0.02	0.03	0.03	1.14	1.82	1.13	1.13	0.03	0.03	0.03	0.03	0.00	0.00	0.00	9.68			
Others	0.61	0.63	0.64	0.64	2.25	2.28	2.39	2.47	1.36	1.43	1.54	1.59	0.05	3.25	0.16	11.27			

World and Selected Countries and Regions

Table 15 Rapeseed Area, Yield, and Production

Country / Region	Area (Million hectares)				Yield (Metric tons per hectare)				Production (Million metric tons)				Change in Production			
	2016/17	Prel.		2018/19 Proj.		2016/17	Prel.		2018/19 Proj.		2016/17	Prel.		2018/19 Proj.		
		2017/18	Aug	Sep	2017/18		Aug	Sep	2017/18	Aug		Sep	MMT	Percent	MMT	Percent
World	34.08	35.77	36.59	36.50	2.09	2.08	1.97	1.96	71.33	74.55	72.15	71.70	-0.45	-0.62	-2.86	-3.83
United States	0.69	0.81	0.82	0.82	2.04	1.75	1.86	1.86	1.41	1.42	1.52	1.52	0.00	0.00	0.09	6.60
Total Foreign	33.39	34.96	35.77	35.68	2.09	2.09	1.97	1.97	69.92	73.13	70.63	70.18	-0.45	-0.64	-2.95	-4.03
European Union	6.58	6.83	6.84	6.85	3.12	3.24	2.81	2.78	20.54	22.15	19.20	19.00	-0.20	-1.04	-3.15	-14.20
Canada	8.26	9.27	9.10	9.10	2.37	2.30	2.32	2.32	19.60	21.33	21.10	21.10	0.00	0.00	-0.23	-1.07
China	7.33	7.20	7.10	7.00	1.98	2.00	2.00	1.99	14.55	14.40	14.20	13.95	-0.25	-1.76	-0.45	-3.13
South Asia																
India	6.07	5.85	6.50	6.50	1.17	1.00	1.00	1.00	7.09	5.85	6.50	6.50	0.00	0.00	0.65	11.11
Pakistan	0.21	0.24	0.23	0.23	0.95	0.96	0.98	0.98	0.20	0.23	0.23	0.23	0.00	0.00	0.00	0.00
Bangladesh	0.25	0.25	0.25	0.25	0.92	0.92	0.92	0.92	0.23	0.23	0.23	0.23	0.00	0.00	0.00	0.00
Former Soviet Union - 12																
Russia	0.91	0.95	1.40	1.40	1.10	1.58	1.29	1.29	1.00	1.50	1.80	1.80	0.00	0.00	0.30	20.24
Ukraine	0.45	0.79	1.00	1.00	2.78	2.80	2.60	2.60	1.25	2.22	2.60	2.60	0.00	0.00	0.38	17.28
Belarus	0.21	0.33	0.35	0.35	1.24	1.81	1.57	1.57	0.26	0.60	0.55	0.55	0.00	0.00	-0.05	-8.79
Kazakhstan	0.16	0.25	0.25	0.25	1.06	1.11	1.10	1.10	0.17	0.28	0.28	0.28	0.00	0.00	0.00	-1.43
Australia	2.68	2.70	2.45	2.45	1.61	1.36	1.31	1.31	4.31	3.67	3.20	3.20	0.00	0.00	-0.47	-12.81
South America																
Chile	0.05	0.06	0.05	0.05	3.98	3.86	4.20	4.20	0.18	0.22	0.23	0.23	0.00	0.00	0.01	3.18
Paraguay	0.03	0.03	0.04	0.04	2.00	1.00	1.50	1.50	0.05	0.03	0.06	0.06	0.00	0.00	0.03	100.00
Switzerland	0.02	0.02	0.02	0.02	3.14	3.14	3.14	3.14	0.07	0.07	0.07	0.07	0.00	0.00	0.00	0.00
Ethiopia	0.02	0.04	0.04	0.04	1.79	1.71	1.57	1.57	0.04	0.06	0.06	0.06	0.00	0.00	-0.01	-8.33
Others	0.17	0.15	0.15	0.15	2.26	2.10	2.21	2.21	0.38	0.31	0.34	0.34	0.00	0.00	0.03	10.75

World and Selected Countries and Regions

Table 16 Copra, Palm Kernel, and Palm Oil Production

Country / Region	Production (Million metric tons)				Change in Production			
	2016/17	Prel.	2018/19 Proj.		From last month		From last year	
		2017/18	Aug	Sep	MMT	Percent	MMT	Percent
Oilseed, Copra								
Philippines	2.30	2.60	2.70	2.70	0.00	0.00	0.10	3.85
Indonesia	1.58	1.45	1.42	1.42	0.00	0.00	-0.03	-2.07
India	0.72	0.75	0.75	0.75	0.00	0.00	0.00	0.00
Vietnam	0.26	0.28	0.29	0.29	0.00	0.00	0.00	0.00
Mexico	0.21	0.21	0.22	0.22	0.00	0.00	0.01	4.76
Papua New Guinea	0.10	0.10	0.10	0.10	0.00	0.00	0.00	0.00
Thailand	0.07	0.07	0.07	0.07	0.00	0.00	0.00	0.00
Sri Lanka	0.07	0.07	0.07	0.07	0.00	0.00	0.00	0.00
Solomon Islands	0.03	0.03	0.03	0.03	0.00	0.00	0.00	0.00
Vanuatu/New Hebrides	0.03	0.03	0.03	0.03	0.00	0.00	0.00	0.00
World	5.51	5.73	5.83	5.83	0.00	0.00	0.10	1.75
Oilseed, Palm Kernel								
Indonesia	9.50	10.20	10.60	10.60	0.00	0.00	0.40	3.92
Malaysia	4.78	4.98	5.30	5.30	0.00	0.00	0.33	6.64
Thailand	0.75	0.82	0.87	0.87	0.00	0.00	0.05	6.10
Nigeria	0.73	0.73	0.73	0.73	0.00	0.00	0.00	0.00
Colombia	0.24	0.34	0.32	0.32	0.00	0.00	-0.02	-5.88
Papua New Guinea	0.16	0.17	0.17	0.17	0.00	0.00	0.00	0.00
Guatemala	0.15	0.15	0.15	0.15	0.00	0.00	0.00	0.00
Honduras	0.14	0.14	0.14	0.14	0.00	0.00	0.00	0.00
Brazil	0.12	0.13	0.14	0.14	0.00	0.00	0.01	7.69
Ecuador	0.11	0.12	0.12	0.12	0.00	0.00	0.00	0.00
World	17.36	18.45	19.21	19.21	0.00	0.00	0.76	4.12
Oil, Palm								
Indonesia	36.00	38.50	40.50	40.50	0.00	0.00	2.00	5.19
Malaysia	18.86	20.00	21.00	21.00	0.00	0.00	1.00	5.00
Thailand	2.50	2.70	2.90	2.90	0.00	0.00	0.20	7.41
Colombia	1.15	1.63	1.53	1.53	0.00	0.00	-0.10	-6.13
Nigeria	0.97	0.97	0.97	0.97	0.00	0.00	0.00	0.00
Guatemala	0.74	0.74	0.74	0.74	0.00	0.00	0.00	0.00
Papua New Guinea	0.65	0.63	0.63	0.63	0.00	0.00	0.00	0.00
Ecuador	0.57	0.59	0.61	0.61	0.00	0.00	0.02	3.39
Honduras	0.62	0.58	0.58	0.58	0.00	0.00	0.00	0.00
Ghana	0.52	0.52	0.52	0.52	0.00	0.00	0.00	0.00
World	65.26	69.60	72.76	72.76	0.00	0.00	3.16	4.54

World and Selected Countries and Regions

Table 17 Cotton Area, Yield, and Production

Country / Region	Area (Million hectares)				Yield (Kilograms per hectare)				Production (Million 480 lb. bales)				Change in Production			
	2016/17	Prel.	2018/19 Proj.		2016/17	Prel.	2018/19 Proj.		2016/17	Prel.	2018/19 Proj.		From last month		From last year	
		2017/18	Aug	Sep		2017/18	Aug	Sep		2017/18	Aug	Sep	MBales	Percent	MBales	Percent
World	29.71	33.38	32.76	32.87	781	805	801	808	106.63	123.48	120.53	121.97	1.44	1.20	-1.51	-1.23
United States	3.85	4.49	4.10	4.27	972	1,014	1,021	1,003	17.17	20.92	19.24	19.68	0.45	2.32	-1.24	-5.93
Total Foreign	25.86	28.89	28.66	28.60	753	773	770	779	89.46	102.56	101.29	102.29	1.00	0.98	-0.27	-0.27
South Asia																
India	10.85	12.40	11.90	11.90	542	509	525	525	27.00	29.00	28.70	28.70	0.00	0.00	-0.30	-1.03
Pakistan	2.40	2.60	2.70	2.70	699	687	685	685	7.70	8.20	8.50	8.50	0.00	0.00	0.30	3.66
China	2.90	3.40	3.35	3.35	1,708	1,761	1,722	1,787	22.75	27.50	26.50	27.50	1.00	3.77	0.00	0.00
South America																
Brazil	0.94	1.18	1.30	1.30	1,626	1,708	1,591	1,675	7.02	9.22	9.50	10.00	0.50	5.26	0.78	8.46
Argentina	0.24	0.35	0.38	0.40	680	510	601	599	0.75	0.82	1.04	1.10	0.07	6.28	0.28	34.15
Paraguay	0.01	0.01	0.01	0.01	416	416	416	416	0.02	0.02	0.02	0.02	0.00	0.00	0.00	0.00
Africa																
Burkina	0.70	0.85	0.75	0.75	407	333	406	406	1.31	1.30	1.40	1.40	0.00	0.00	0.10	7.69
Mali	0.66	0.73	0.74	0.74	412	403	403	403	1.24	1.35	1.37	1.37	0.00	0.00	0.02	1.48
Cote d'Ivoire	0.35	0.37	0.37	0.37	394	467	427	427	0.63	0.79	0.73	0.73	0.00	0.00	-0.06	-7.64
Benin	0.42	0.45	0.44	0.44	433	423	421	421	0.83	0.88	0.85	0.85	0.00	0.00	-0.03	-2.86
Egypt	0.06	0.09	0.13	0.13	673	718	732	732	0.17	0.30	0.42	0.42	0.00	0.00	0.12	40.00
Cameroon	0.23	0.23	0.23	0.23	455	484	484	484	0.47	0.50	0.50	0.50	0.00	0.00	0.00	0.00
Tanzania	0.40	0.35	0.50	0.50	106	143	174	185	0.20	0.23	0.40	0.43	0.03	6.25	0.20	84.78
Nigeria	0.28	0.27	0.27	0.27	182	190	190	190	0.23	0.24	0.24	0.24	0.00	0.00	0.00	0.00
Zimbabwe	0.21	0.20	0.23	0.23	146	245	218	218	0.14	0.23	0.23	0.23	0.00	0.00	0.01	2.22
Ethiopia	0.08	0.06	0.07	0.07	550	635	586	586	0.21	0.18	0.18	0.18	0.00	0.00	0.00	0.00
Former Soviet Union - 12																
Uzbekistan	1.18	1.25	1.20	1.20	687	688	599	599	3.73	3.95	3.30	3.30	0.00	0.00	-0.65	-16.46
Turkmenistan	0.55	0.55	0.55	0.55	529	543	519	519	1.33	1.36	1.30	1.30	0.00	0.00	-0.06	-4.41
Tajikistan	0.17	0.19	0.19	0.19	567	671	607	607	0.43	0.57	0.53	0.53	0.00	0.00	-0.04	-7.02
Kazakhstan	0.12	0.13	0.12	0.12	568	505	454	454	0.30	0.29	0.25	0.25	0.00	0.00	-0.04	-13.79
Middle East																
Turkey	0.40	0.47	0.52	0.52	1,742	1,853	1,884	1,884	3.20	4.00	4.50	4.50	0.00	0.00	0.50	12.50
Syria	0.04	0.03	0.03	0.03	1,089	1,161	1,132	1,132	0.20	0.16	0.13	0.13	0.00	0.00	-0.03	-18.75
Iran	0.10	0.09	0.09	0.09	653	640	704	704	0.30	0.25	0.28	0.28	0.00	0.00	0.03	10.00
Australia	0.58	0.53	0.43	0.38	1,520	1,931	1,798	1,742	4.05	4.70	3.55	3.00	-0.55	-15.49	-1.70	-36.17
Mexico	0.10	0.21	0.23	0.23	1,602	1,621	1,657	1,657	0.77	1.56	1.75	1.75	0.00	0.00	0.19	12.47
Burma	0.24	0.25	0.24	0.24	634	634	635	635	0.71	0.73	0.70	0.70	0.00	0.00	-0.03	-3.45
Others	1.69	1.69	1.72	1.69	490	551	563	566	3.80	4.26	4.45	4.40	-0.05	-1.01	0.14	3.26

World and Selected Countries and Regions

TABLE 18

The table below presents a record of the September projection and the final Estimate. Using world wheat production as an example, the "root mean square error" means that chances are 2 out of 3 that the current forecast will not be above or below the final estimate by more than 2.3 percent. Chances are 9 out of 10 (90% confidence level) that the difference will not exceed 4 percent. The average difference between the September projection and the final estimate is 11.1 million tons, ranging from 0.2 million to 32.1 million tons. The September projection has been below the estimate 25 times and above 12 times.

RELIABILITY OF PRODUCTION PROJECTIONS 1/

COMMODITY AND REGION	Root mean square error	90 percent confidence interval	Difference between forecast and final estimate				
			Average	Smallest	Largest	Years	
						Below final	Above final
	Percent		---Million metric tons---				
WHEAT							
World	2.0	3.4	9.1	0.9	30.7	25	12
U.S.	1.9	3.2	0.9	0.0	2.5	15	22
Foreign	2.3	3.9	9.7	1.0	30.9	26	11
COARSE GRAINS 2/							
World	2.1	3.6	16.7	0.2	50.6	28	9
U.S.	4.2	7.2	7.7	0.2	26.0	25	12
Foreign	2.4	4.1	14.8	1.0	42.8	27	10
RICE (Milled)							
World	2.3	3.9	6.2	0.4	24.1	28	9
U.S.	4.4	7.5	0.2	0.0	0.5	20	16
Foreign	2.4	4.0	6.3	0.3	24.2	28	9
SOYBEANS							
World	4.7	7.9	7.2	0.4	27.4	23	14
U.S.	5.1	8.7	3.0	0.2	10.4	21	16
Foreign	7.6	13.0	6.8	0.9	29.1	18	19
COTTON			---Million 480-lb. bales---				
World	4.8	8.1	3.2	0.1	12.6	23	14
U.S.	6.1	10.3	0.8	0.0	2.4	19	17
Foreign	5.4	9.2	2.9	0.0	11.3	24	13
UNITED STATES			-----Million bushels-----				
CORN	4.5	7.6	289	15	885	25	12
SORGHUM	6.2	10.5	24	0	81	16	20
BARLEY	4.9	8.3	11	1	36	15	22
OATS	9.3	15.8	12	0	44	6	30

1/ Marketing years 1981/82 through 2016/17. Final for grains, soybeans and cotton is defined as the first November estimates following the marketing year for 1981/82 through 2016/17, and for 2017/18 last month's estimate.

2/ Includes corn, sorghum, barley, oats, rye, millet, and mixed grain

September 2018

Office of Global Analysis, FAS, USDA