



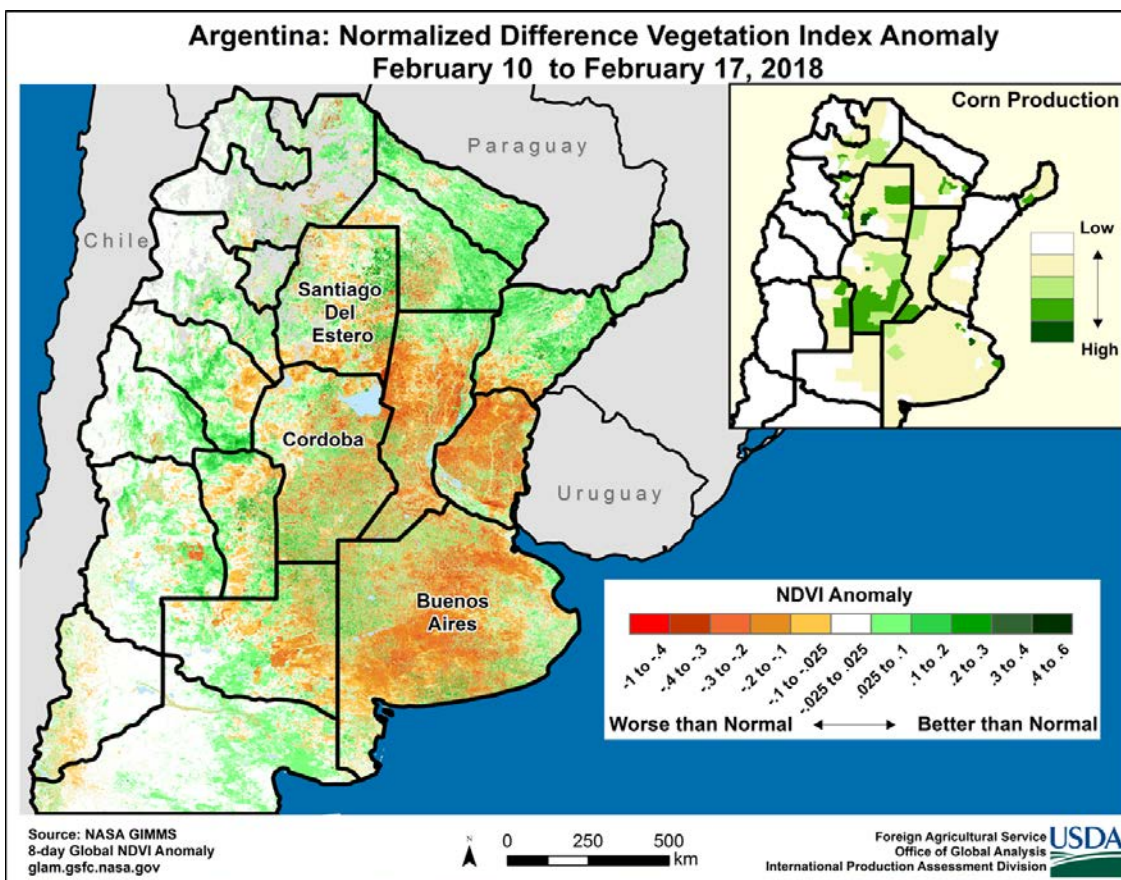
United States
Department of
Agriculture

Foreign
Agricultural
Service

Circular Series
WAP 3-18
March 2018

World Agricultural Production

Argentina Corn: Dry Conditions Reduce Yield Expectations

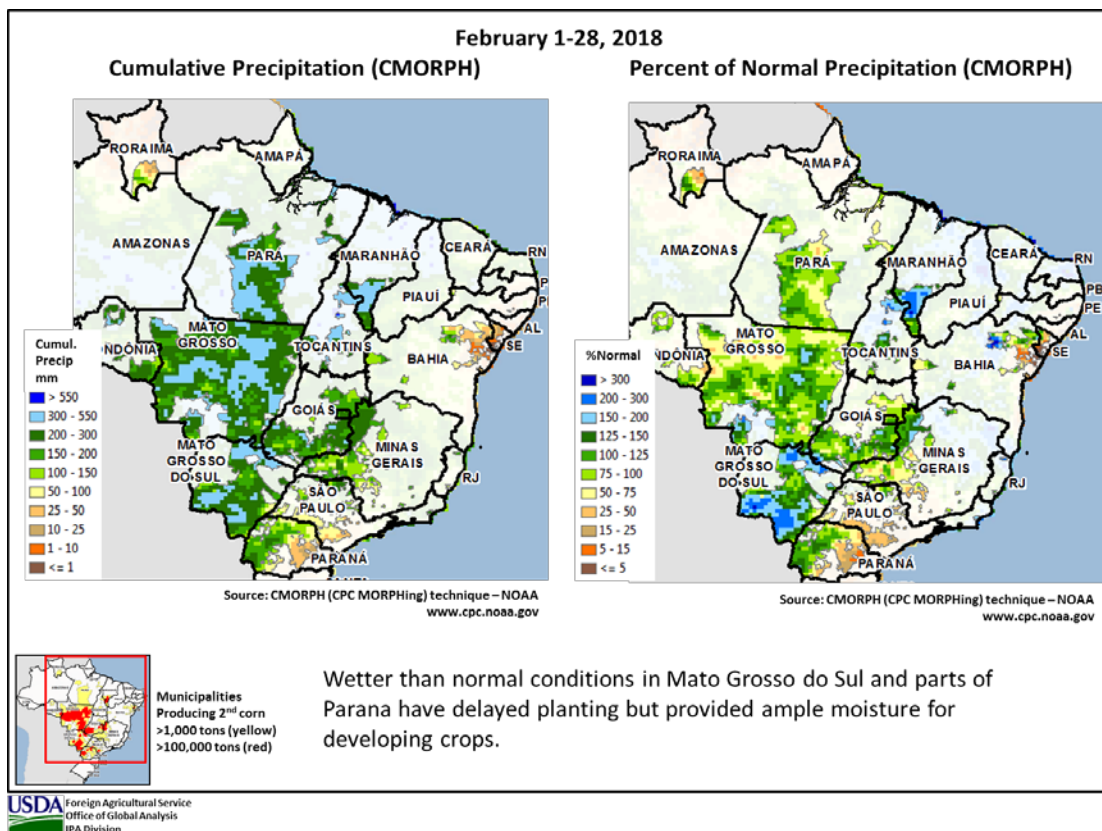


Argentina corn production for 2017/18 is estimated at 36 million metric tons, down 8 percent from last month and down 12 percent from last year. Area is estimated at 5.2 million hectares, unchanged from last month and 6 percent higher than last season. The estimated yield of 6.92 tons per hectare is 8 percent below last month's yield and 17 percent lower than last year. Both early-planted and late-planted crops have been affected by heat and drought. Rain received in late January partially alleviated dryness. Lower corn yields are expected as indicated by below-normal vegetation indices across Argentina. (For more information, please contact Denise.McWilliams@fas.usda.gov.)

Approved by the World Agricultural Outlook Board

Brazil Corn: Production Estimated Down Due to Lower Area

Brazil corn production is estimated at 94.5 million metric tons (mmt), down 1 percent from last month and down 4 percent from last year's record. Harvested area is estimated at 17.6 million hectares, down 1 percent from last month and unchanged from last year. Yield is estimated at 5.37 metric tons per hectare, down slightly from last month and down 4 percent from last year's record yield.

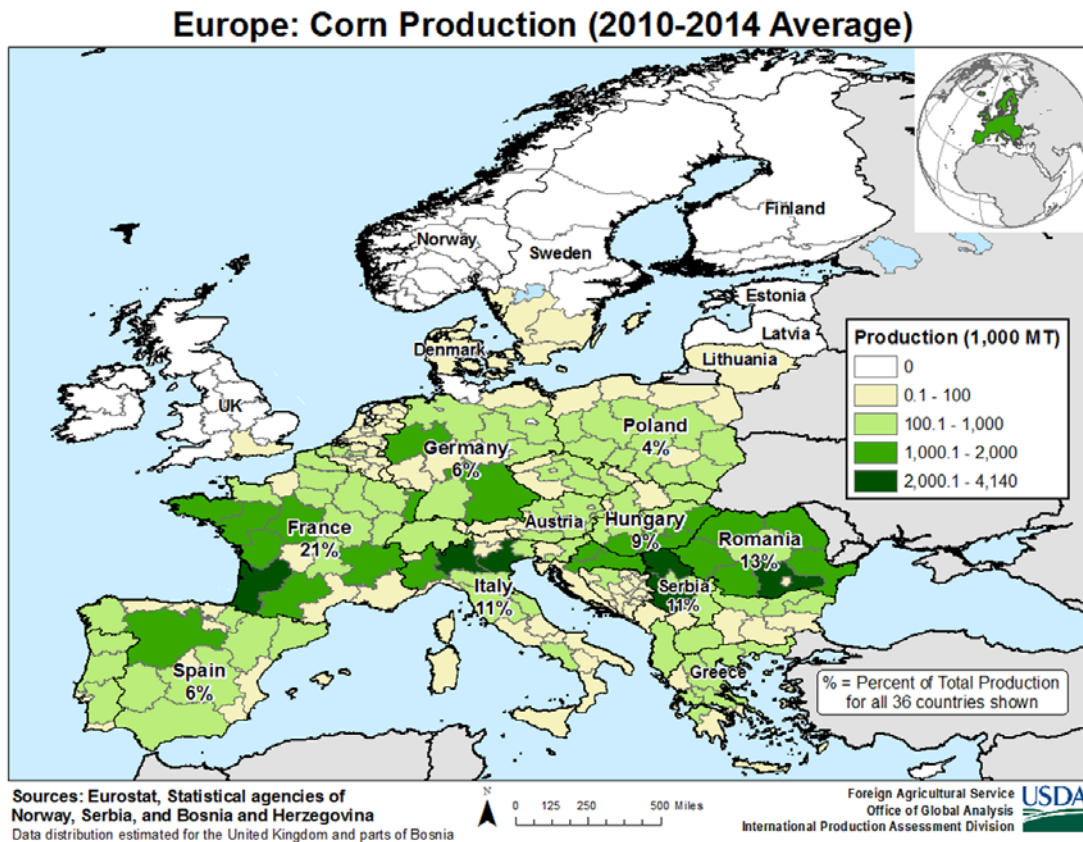


Brazil has two seasons for corn production. The planting of first-crop corn begins in September and harvest begins in March. A larger second-season crop is planted after the early-season soybean harvest, typically from January to March. Harvesting of the first crop is underway in the major growing regions and yield is estimated above average but below last year's record. Planting of the second crop begins in the Center-West and South regions in January and continues through May in the northern regions.

Second-crop planting has been progressing at an average pace in Mato Grosso. In Mato Grosso do Sul and Parana, planting is slower than average due to excessively wet conditions from above-normal rainfall that has limited fieldwork and delayed the harvest of soybeans. Later-planted corn can be at greater risk if seasonal rains dissipate before the crop has had sufficient time and moisture to complete its development. In Mato Grosso when it becomes too late to plant the second-crop, farmers commonly opt to plant sorghum, which can be planted until April in the Center-West and South regions. Second-crop corn is harvested from June to September. *(For more information, please contact Maria.Anulacion@fas.usda.gov.)*

EU Corn: Harvest Results Boost Production Estimate

Estimated EU corn production for 2017/18 is increased by 1.0 million metric tons (mmt) from last month to 61.1 mmt, 0.3 mmt below last year and 2.9 million or 4 percent below the 5-year average. (The 5-year average however, is somewhat skewed by the all-time high of 75.7 mmt reached in 2014/15.) The increase is based on official harvest data.



Yield is estimated at 7.21 tons per hectare, up 2 percent from last month and 6 percent above the 5-year average. Area is estimated at 8.5 million hectares, virtually unchanged from last month but down 0.1 mha from last year, and down 10 percent from the 5-year average. EU corn area, which has been falling since 2012/13, was at its lowest level in over ten years in 2017/18.

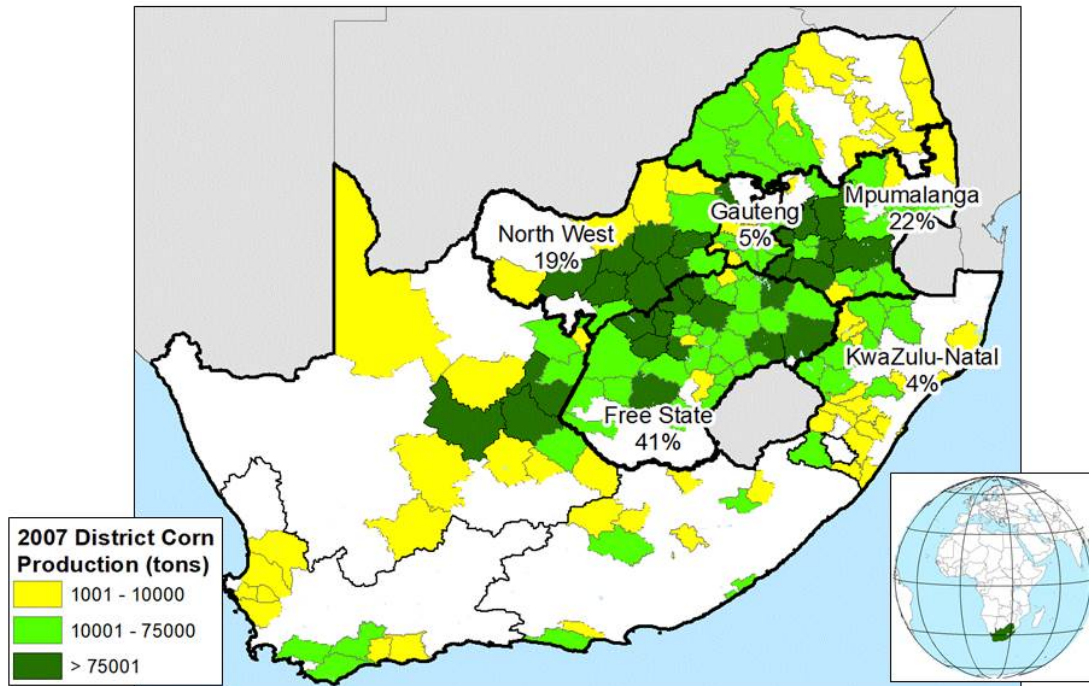
Corn production in France, usually the EU's largest producer, was raised 0.7 mmt from last month to 14.3 mmt based on data released by the French Farm Ministry. Additionally, production was raised in Germany by 0.3 mmt to 4.5 mmt, based on data released by the German Statistics Office. Despite estimates for Romania that range up to 14.5 mmt, USDA's estimate remains at 11.5 mmt based on in-country trade sources for Romania.

(For more information, please contact Bryan.Purcell@fas.usda.gov). For a breakout of USDA's area, yield, and production estimates by commodity within the European Union, please go to the PSD Data Sets and select the zipped file for "EU Countries Area & Production" (<https://apps.fas.usda.gov/psdonline/app/index.html#/app/downloads>).

South Africa Corn: Second Consecutive Year with Above-Average Output

South Africa's 2017/18 corn production is forecast at 13.0 million metric tons (mmt), up 0.5 mmt or 4 percent from last month, down 4.5 mmt or 26 percent from last year's record crop, and up 0.3 mmt or 2 percent from the 5-year average. Area is estimated at 2.7 million hectares (mha), down 0.1 mha from last month and down 0.3 mha from last year. Yield is forecast at 4.81 metric tons per hectare, down 17 percent from last year's record yield but up 11 percent from the 5-year average.

South Africa Corn Production (2011-2015)



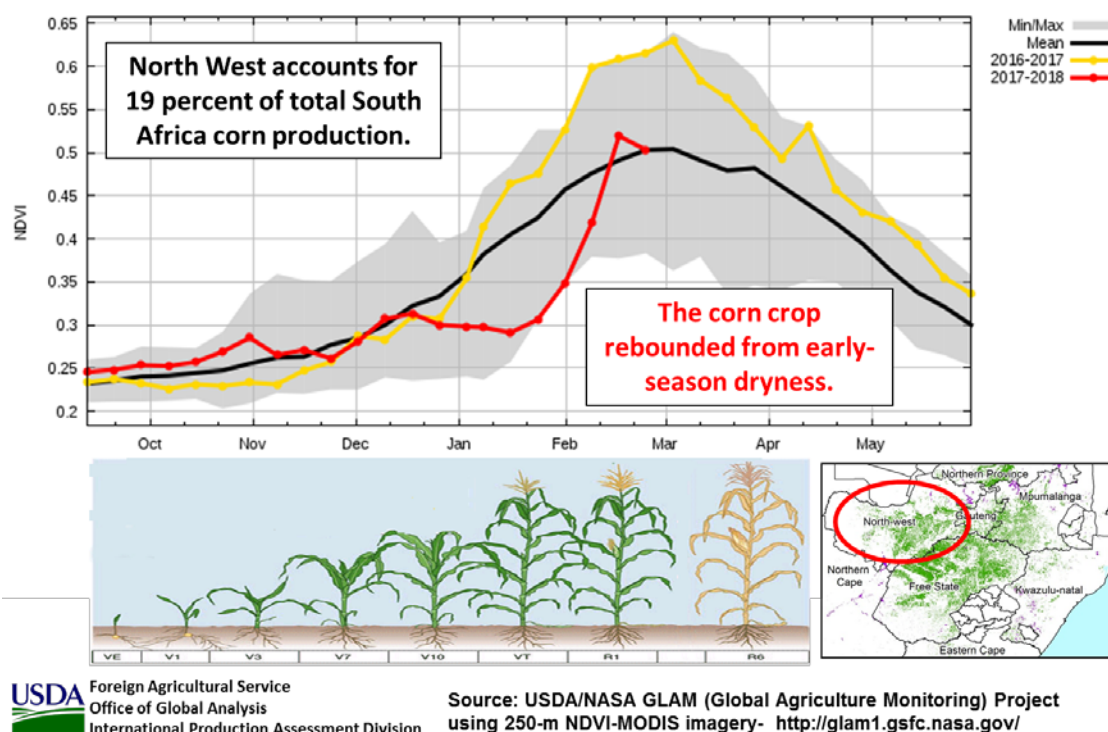
Data Sources:



- 1). Percentage value indicates percent province production of total average production (2011-2015) from South Africa's Crop Estimates Committee, Department of Agriculture, Forestry & Fisheries.
- 2). District corn production from 2007 Census of Commercial Agriculture, Statistics South Africa, 2011.

Yield is forecast to be above average due to favorable rainfall during the critical pollination and early grain-filling stages from January 20 through the end of February. The satellite-derived Normalized Difference Vegetation Index (NDVI) shows that all major dryland corn-producing provinces experienced a dry spell in early January, but NDVI was above average in mid-February after croplands recovered following abundant rains starting on January 20th.

North West Province: NDVI-MODIS

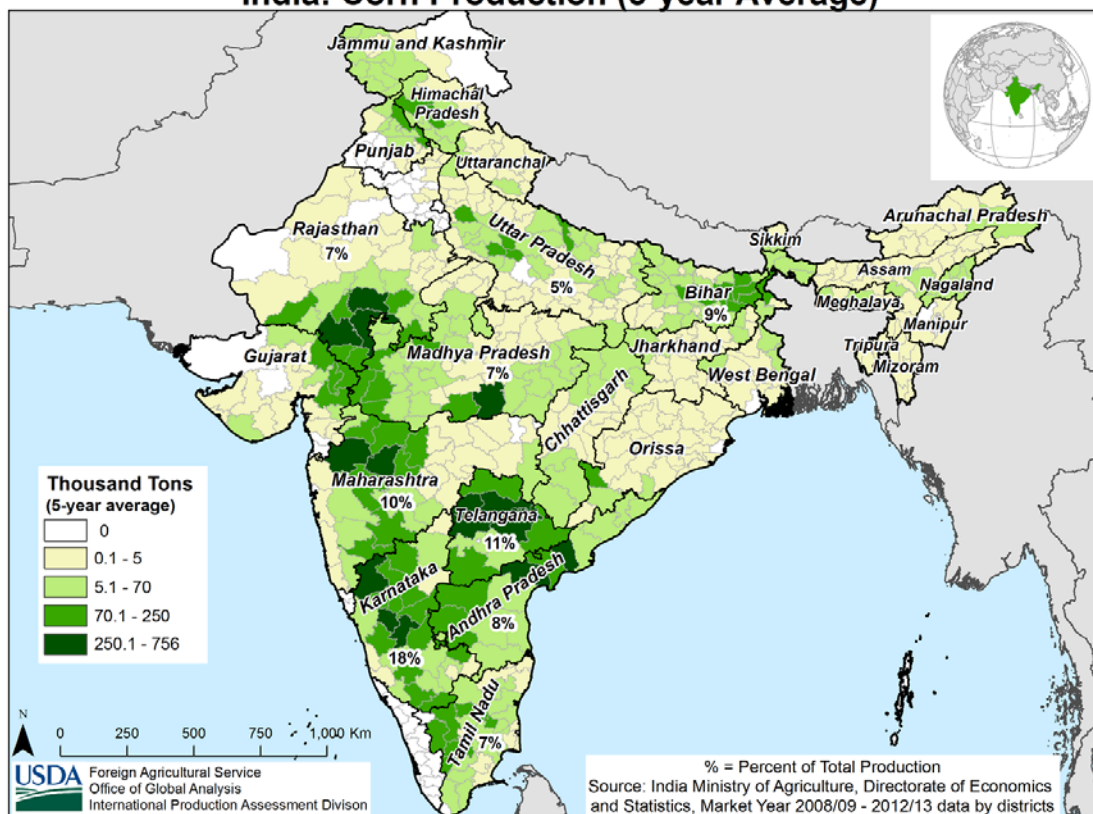


FAS personnel from Washington and Pretoria visited all major corn producing provinces in late February. Crop conditions were above average in the eastern corn belt where the early January dry spell occurred during the vegetative phase, rather than during the critical reproductive stage. Crop conditions in the western corn belt were below average because a long dry spell in mid-December, which resulted in delayed plantings, poor germination, and failed crop emergence. Reports from South Africa's Crop Estimates Committee indicate that planted corn area in the North West province was reduced by 160,000 hectares from the previous year. *(For more information, please contact Curt.Reynolds@fas.usda.gov.)*

India Corn: Production Up Despite Lower Area

USDA estimates corn production for 2017/18 at 27.2 million metric tons, up nearly 5 percent from last year. The increase is due to the favorable monsoon and the increased use of hybrid seed which has boosted yields in the main corn producing areas. The use of hybrid seed has risen since 2000 to 70 percent of plantings. Harvested area is estimated at 9.6 million hectares, down 3 percent from last year. The decrease is due to lower domestic prices and farmers switching to higher return crops such as rice and pulses.

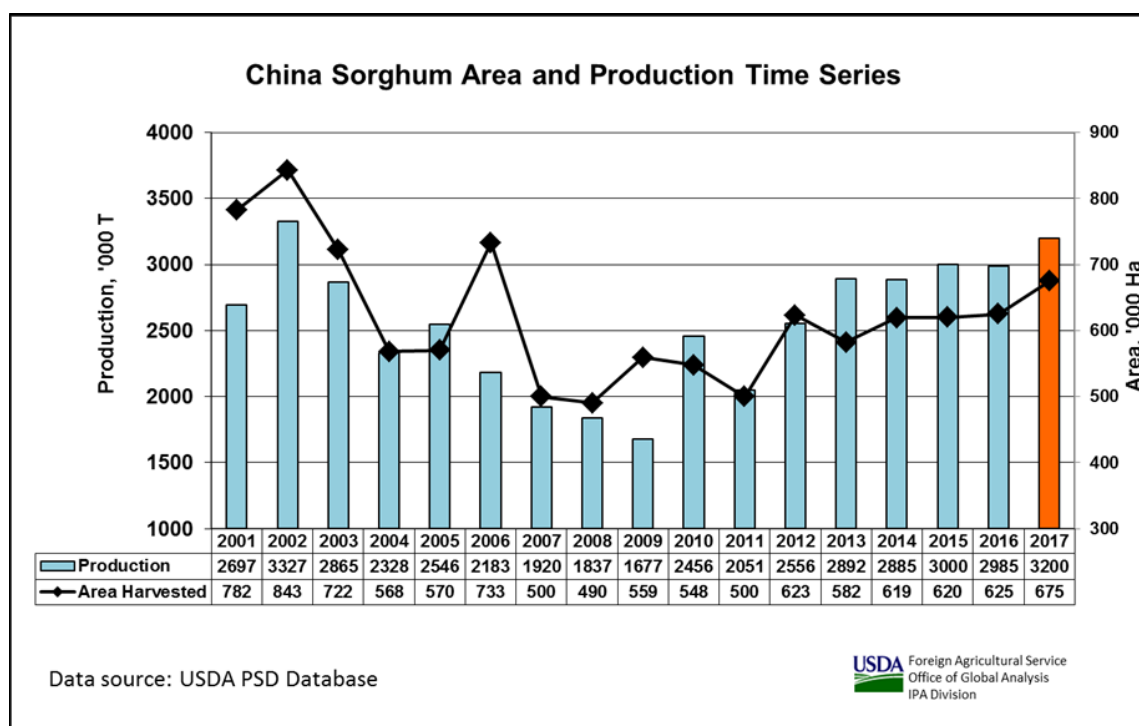
India: Corn Production (5-year Average)



Corn is grown in both the *kharif* and *rabi* seasons, but the *kharif* season accounts for 72 percent of the total production. During the 2017 *kharif* season, Madhya Pradesh, the largest producer, exceeded the government planting target. The other major producers (Karnataka, Maharashtra and Rajasthan) barely met their targets. (*For more information, please contact Arnella.Trent@fas.usda.gov.*)

China Sorghum: Production Revised Down

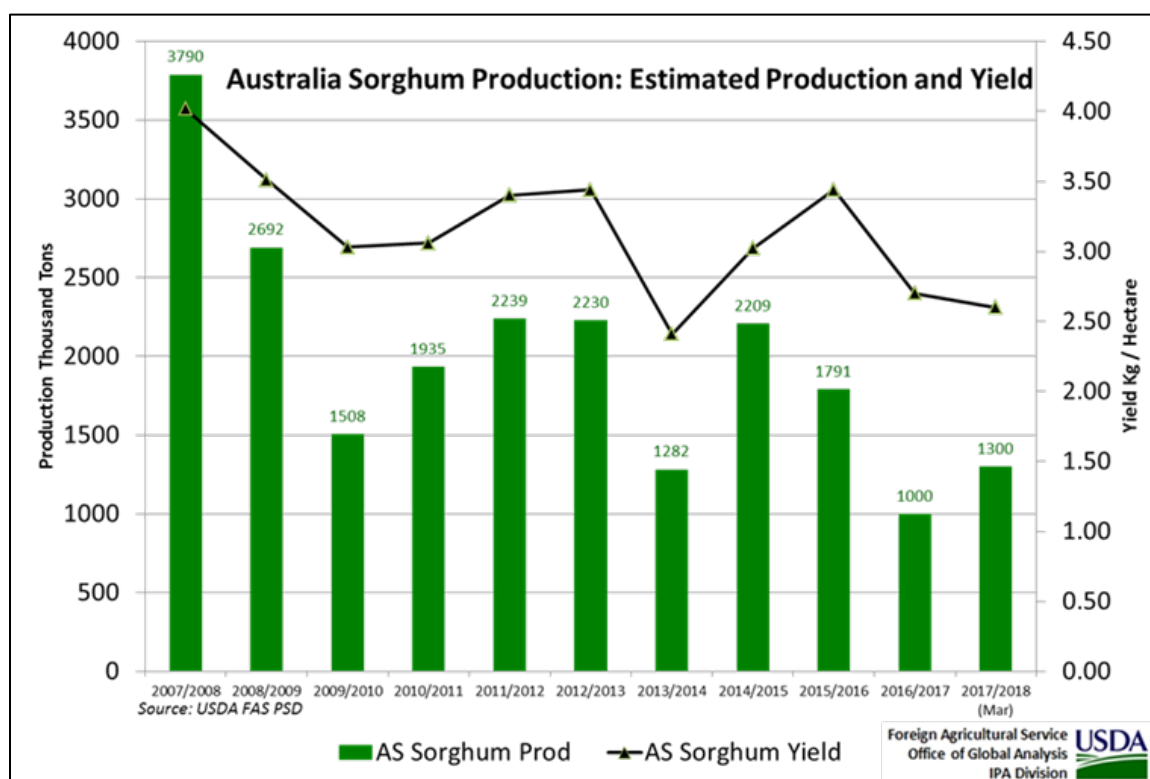
USDA estimates China's 2017/18 sorghum production at 3.2 million metric tons, down roughly 0.7 million or 17 percent from last month but up 0.2 million or 7 percent from last year. The revised estimate is due to a decrease in harvested area. Area is estimated at 675,000 hectares, up 50,000 or 8 percent from last year. The current area estimate is the highest sorghum area since 2006. Sorghum, like most other crops, has benefited from recent changes in agricultural policies. The farmers' response has been a reduction in corn area and the largest reduction has occurred in the Northeast, including Heilongjiang, Jilin, Liaoning, and Nei Mongol provinces. In this region farmers shifted corn acreage to alternative crops such as sorghum, soybeans, potatoes, and rice.



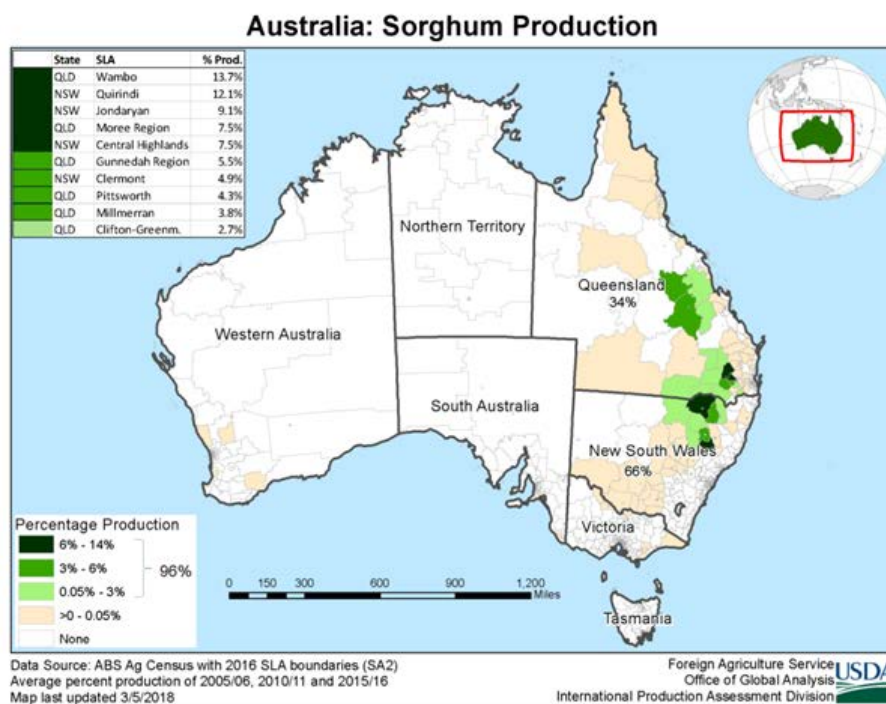
The major sorghum expansion has been in areas where corn is only marginally suitable, and in regions where sorghum is predominantly irrigated. Sorghum yield is estimated at 4.74 tons per hectare, down approximately 1 percent from last year's record. More than 90 percent of the sorghum crop is concentrated in the northeast provinces and Inner Mongolia. These regions had favorable seasonal soil moisture, and crop conditions ranged from normal to above-normal. *(For more information, please contact Dath.Mita@fas.usda.gov).*

Australia Sorghum: Heat and Dryness Reduce Production Prospects

Australia sorghum production for 2017/18 is estimated at 1.3 million tons, down 0.6 million or 32 percent from last month, but up 0.3 million or 30 percent from last year. Area is estimated at 0.5 million hectares, down 0.13 million from last month, but up 0.13 million or 35 percent from last year. Yield is forecast at 2.60 tons per hectare, down 14 percent from last month and slightly below last year. The area planted to grain sorghum is forecast to decrease because of higher planted area for cotton.

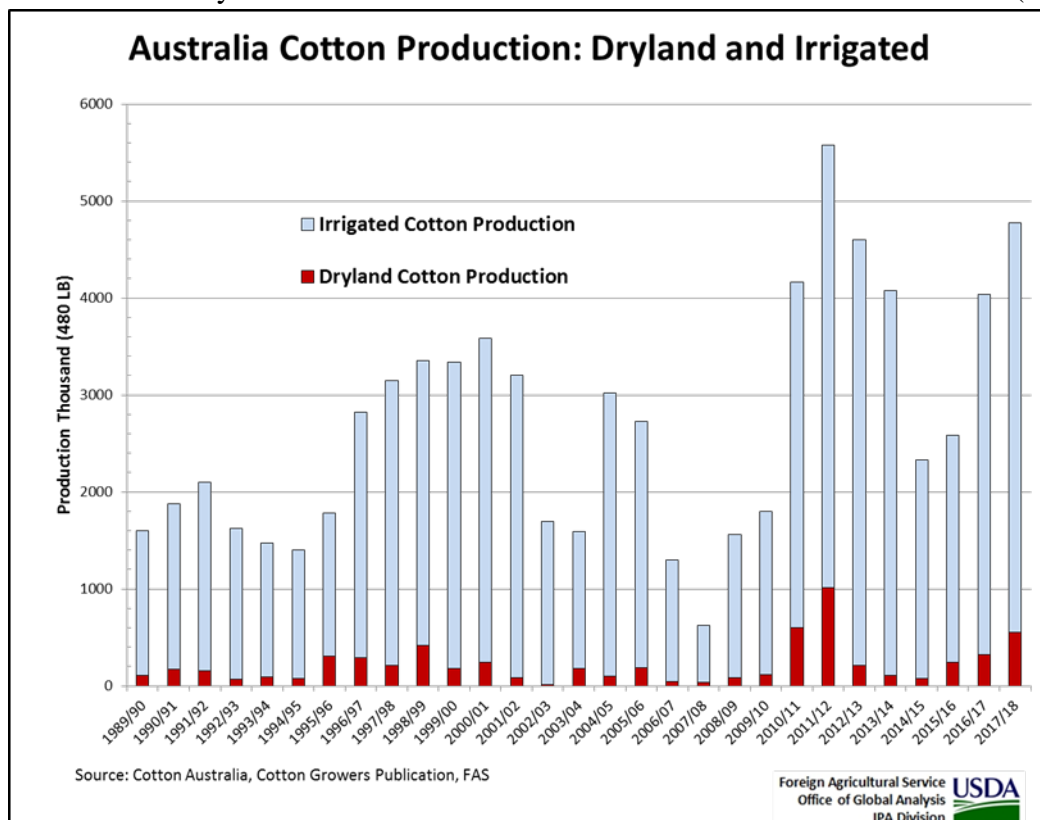


Late-season planting of sorghum is expected to be minimal because of unfavorable weather during the past several weeks. High temperatures further stressed the crop, which was already struggling from a lack of soil moisture. These conditions are expected to reduce yield. In Queensland, heat and dryness have accelerated crop maturity and harvest began two weeks early. Queensland produces about two-thirds of Australia's sorghum, with New South Wales accounting for the remainder. Sorghum is sown from September through January. Harvest of the early-planted crop begins in February and continues through June. (For more information, please contact James.Crutchfield@fas.usda.gov).



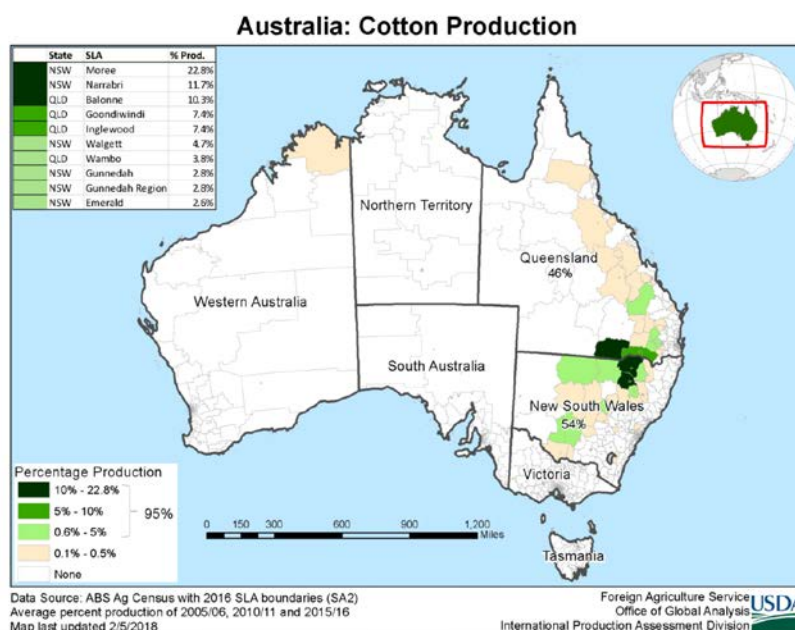
Australia Cotton: Production Forecast Increased

The 2017/18 Australia cotton crop is estimated at 4.7 million 480-pound bales (1.02 million metric tons), up 0.3 million bales from last month and up 0.65 million or 16 percent from last year. Harvested area is estimated at 0.530 million hectares (mha), up



0.95 mha from last month, but down 9 percent from last year. Yield is forecast at 1,931 kilograms per hectare, 2 percent below the 5-year average. Yield is expected to decrease from last month because of a forecast increase in the share of the area sown to lower-yielding dryland cotton.

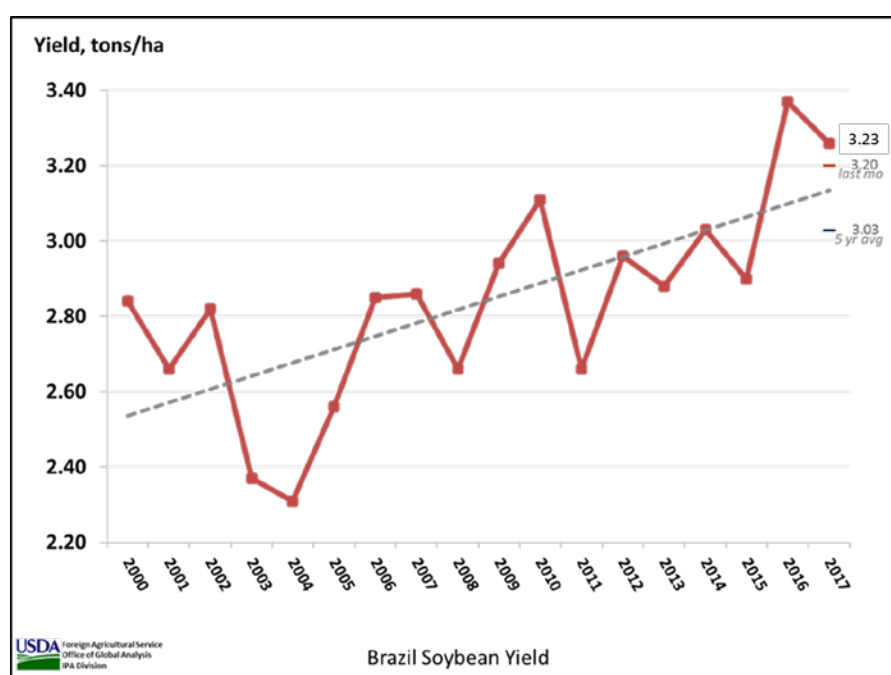
Irrigated cotton yields are substantially higher than dryland yields and the difference widens in low-rainfall years. On average about 90 percent of Australia's total cotton production



comes from irrigated areas. Dryland planting tends to vary with the seasonal weather forecast and prices at sowing. The notable factors this season are the increase in cotton area in southern New South Wales. Early harvest results indicate irrigated yields are better than expected. Sorghum and cotton are the two dominant summer crops in eastern Australia. Cotton sowing commences in October and harvest begins in April. *(For more information, please contact James.Crutchfield@fas.usda.gov).*

Brazil Soybeans: Production Estimate Higher as Harvest Continues

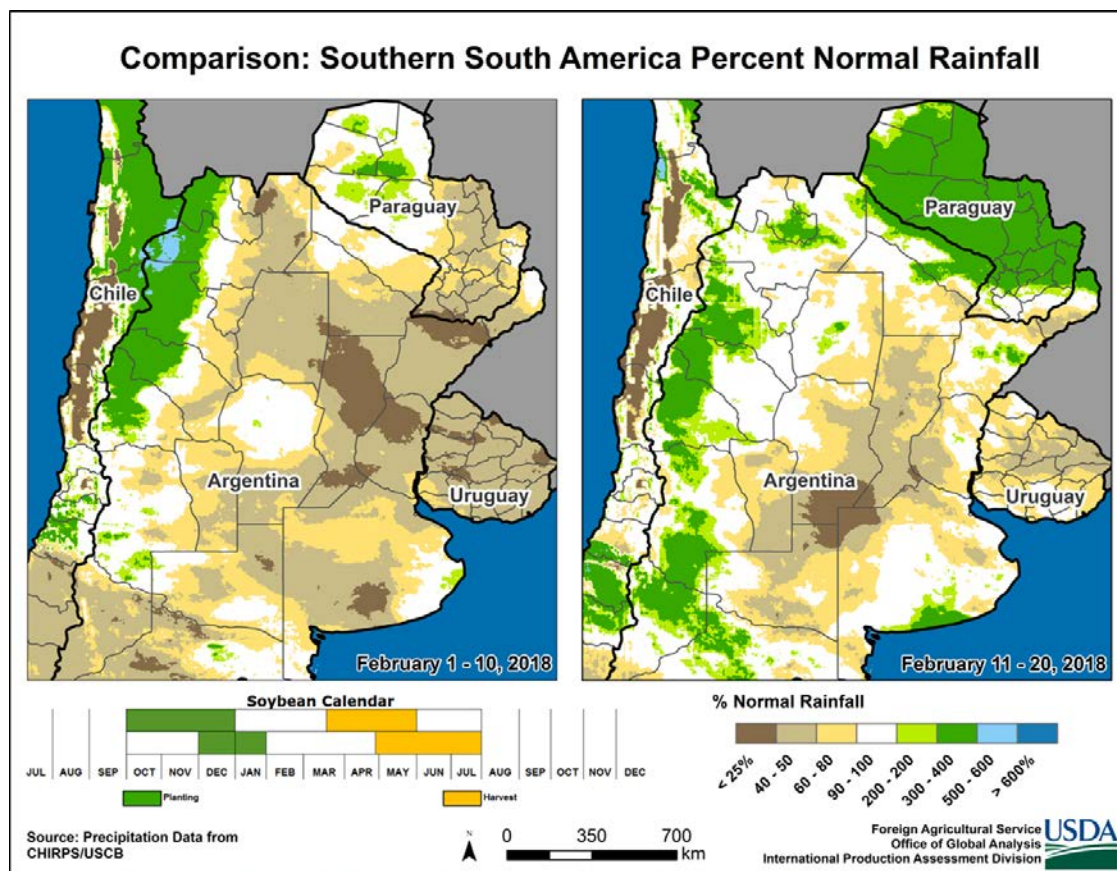
Brazil's soybean production for 2017/18 is estimated at 113.0 million metric tons (mmt), up 1.0 mmt or 1 percent from last month but just below last year's record. Harvested area is estimated at a record 35.0 million hectares, unchanged from last month but up 3 percent from last year. Yield is estimated at 3.23 metric tons per hectare, up 1 percent from last month, but down 4 percent from last year's record.



Harvest began in January in the central and southeastern states and will continue through July in the northern and northeastern states. In most major crop areas, the seasonal Normalized Difference Vegetation Index (NDVI) indicated vegetation health was near to above last year for which yields were above-average to record.

FAS personnel from Washington and Brasilia are visiting major soybean producing states in early March. Harvest reports are confirming that the crop fared very well in general and yields are higher than previously estimated. Persistent rains have caused harvest delays, but about one-third of the crop has been harvested, ahead of the 5-year average but behind last year. The harvest rains also resulted in localized abandonment and declines in quality, although without significant impacts to total output. In southern Rio Grande do Sul, which accounts for 2 percent of Brazil's soybean production, reduced yields are being reported. Harvest in Rio Grande do Sul has just begun and will continue through May. *(For more information, please contact Maria.Anulacion@fas.usda.gov).*

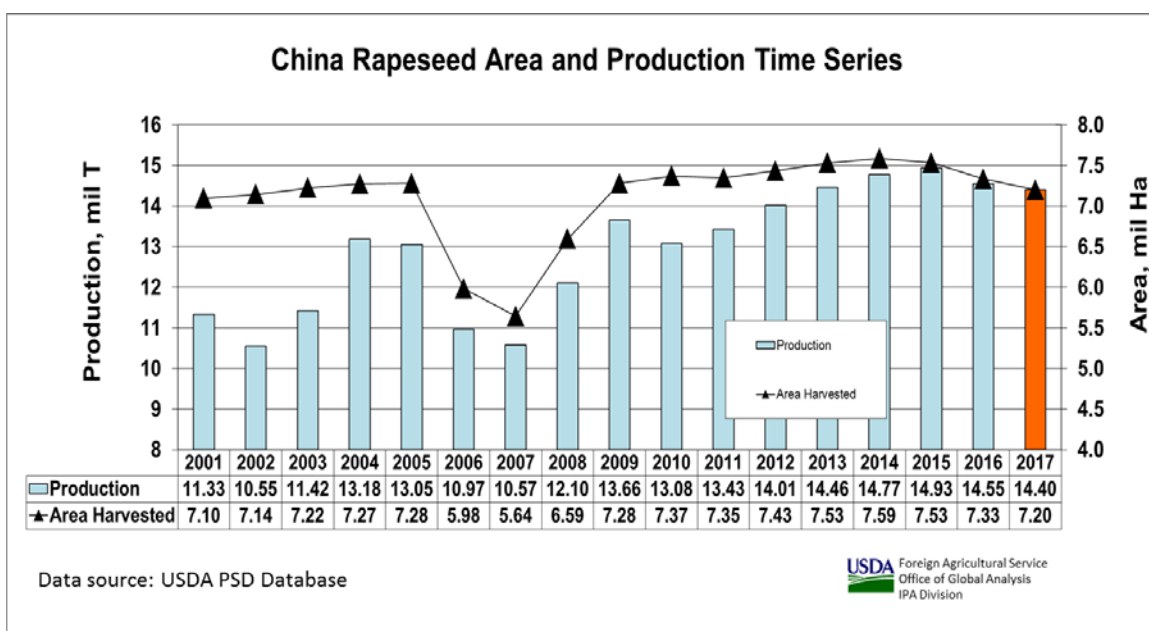
Argentina Soybeans: Continued Dryness Reduces Yield Prospects



Argentina soybean production for 2017/18 is estimated at 47 million metric tons, 13 percent below last month and 19 percent below last year. Area is estimated at 18 million hectares, down 3 percent from last month and down 2 percent from 2016/17. Yields are expected to drop, averaging around 2.61 tons per hectare, down 11 percent from last month and down 17 percent from last year. Dry soils delayed the completion of first crop planting, as well as the planting of second-crop soybeans until rains finally fell in late January. Low soil moisture, heat, and dryness during flowering have reduced yield prospects for soybeans. *(For information, please contact Denise.McWilliams@fas.usda.gov.)*

China Rapeseed: Production Estimate Revised Upward

China's 2017/18 rapeseed production is estimated at 14.4 million tons, up 1.3 million or approximately 10 percent from last month and down 1 percent from last year. The estimated area of 7.2 million hectares is down 0.13 million or 2 percent from last year and the smallest area since 2009/10. Yield is estimated at 2.00 tons per hectare, up 1 percent from last year and above the 5-year average. The rapeseed yield trend has been nearly flat for the past decade.



Planted area has been decreasing since the 2014/15 season. Chinese sources indicate that in the past 5 years the area has been gradually declining especially in central China (the primary growing region). The sources indicate several reasons for the declining area including a shortage of farm labor, low levels of mechanization, and favorable prices for wheat and other crops.

Data from China's National Bureau of Statistics indicate higher production than previously estimated for the winter rapeseed crop. The winter crop accounts for more than 90 percent of China's total rapeseed output. Spring rapeseed is more variable; the planting and harvesting dates for spring rapeseed vary widely based on latitude, elevation, and other factors. *(For more information, please contact Dath.Mita@fas.usda.gov).*



**World Agricultural Production
U.S. Department of Agriculture**

Foreign Agricultural Service / Office of Global Analysis
International Production Assessment Division (IPAD)

Ag Box 1051, Room 4630, South Building

Washington, DC 20250-1051

<http://www.pecad.fas.usda.gov/>

Telephone: (202) 720-1662

Fax: (202) 720-1158

This report uses information from the Foreign Agricultural Service's (FAS) global network of agricultural attachés and counselors, official statistics of foreign governments and other foreign source materials, and the analysis of economic data and satellite imagery. Estimates of foreign area, yield, and production are from the International Production Assessment Division, FAS, and are reviewed by USDA's Inter-Agency Commodity Estimates Committee. Estimates of U.S. area, yield, and production are from USDA's National Agricultural Statistics Service. Numbers within the report may not add to totals because of rounding. This report reflects official USDA estimates released in the World Agricultural Supply and Demand Estimates (WASDE-575), March 8, 2018.

Printed copies are available from the National Technical Information Service. Download an order form at http://www.ntis.gov/products/specialty/usda/fas_a-g.asp, or call NTIS at 1-800-363-2068.

The FAS International Production Assessment Division prepared this report. The next issue of World Agricultural Production will be released after 12:00 p.m. Eastern Time, April 10, 2018.

Conversion Table

Metric tons to bushels

Wheat, soybeans	=	MT * 36.7437
Corn, sorghum, rye	=	MT * 39.36825
Barley	=	MT * 45.929625
Oats	=	MT * 68.894438

Metric tons to 480-lb bales

Cotton	=	MT * 4.592917
--------	---	---------------

Metric tons to hundredweight

Rice	=	MT * 22.04622
------	---	---------------

Area & weight

1 hectare	=	2.471044 acres
1 kilogram	=	2.204622 pounds



For further information, contact:
U.S. Department of Agriculture

Foreign Agricultural Service
Office of Global Analysis
International Production Assessment Division
Ag Box 1051, Room 4630, South Building
Washington, DC 20250-1051

Telephone: (202) 720-1662

Fax: (202) 720-1158

GENERAL INFORMATION

Director	Ronald Frantz	202-720-4056	ronald.frantz@fas.usda.gov
Deputy Director	Robert Tetrault	202-720-1071	robert.tetrault@fas.usda.gov
Administrative Assistant	Shelisa Johnson	202-720-1662	shelisa.johnson@fas.usda.gov
USDA Remote Sensing Advisor	Glenn Bethel	202-720-1280	glenn.bethel@fas.usda.gov
Sr. Analyst/Technical Lead	Curt Reynolds, Ph.D.	202-690-0134	curt.reynolds@fas.usda.gov
Sr. Analyst/ Satellite Imagery	Dath Mita, Ph.D.	202-720-7339	dath.mita@fas.usda.gov
Archives Manager/Technical Lead			
Sr. Analyst/ Global Special	Jim Crutchfield	202-690-0135	james.crutchfield@fas.usda.gov
Projects Manager/Technical Lead			
Sr. Analyst/Technical Lead	Vacant		
GIS Analyst/WAP Coordinator	Justin Jenkins	202-720-0419	justin.jenkins@fas.usda.gov

COUNTRY- AND REGION-SPECIFIC INFORMATION

South America, Argentina, Venezuela, and Colombia	Denise McWilliams, Ph.D.	202-720-0107	denise.mcwilliams@fas.usda.gov
Western and Central Europe, and North Africa	Bryan Purcell	202-690-0138	bryan.purcell@fas.usda.gov
Russia, Ukraine, Kazakhstan	Mark Lindeman	202-690-0143	mark.lindeman@fas.usda.gov
South Asia, Sri Lanka	Arnella Trent	202-720-0881	arnella.trent@fas.usda.gov
Bangladesh, India, and Nepal			
East Asia, China, and Japan	Dath Mita, Ph.D.	202-720-7339	dath.mita@fas.usda.gov
Sub-Saharan Africa,	Curt Reynolds, Ph.D.	202-690-0134	curt.reynolds@fas.usda.gov
Nigeria and South Africa			
S.E. Asia, Indonesia, Thailand, Malaysia, Cambodia and Vietnam	Michael Shean	202-720-7366	michael.shean@fas.usda.gov
Central America, Mexico, and Western United States	Justin Jenkins	202-720-0419	justin.jenkins@fas.usda.gov
Australia, New Zealand, Pakistan	Jim Crutchfield	202-690-0135	james.crutchfield@fas.usda.gov
Papua New Guinea and South Pacific Islands			
Middle East, Central Asia, Afghanistan	Bill Baker, Ph.D.	202-260-8109	william.baker@fas.usda.gov
Iraq, Iran, and Syria			
Canada, Caribbean,	Katie McGaughey	202-720-9210	katie.mcgaughey@fas.usda.gov
Eastern United States			
Brazil	Maria Anulacion	202-720-6878	maria.anulacion@fas.usda.gov



The Foreign Agricultural Service (FAS) updates its production, supply and distribution (PSD) database for cotton, oilseeds, and grains at 12:00 p.m. on the day the *World Agricultural Supply and Demand Estimates* (WASDE) report is released. This circular is released by 12:15 p.m.

FAS Reports and Databases:

Current *World Market and Trade* and *World Agricultural Production* Reports:

<http://apps.fas.usda.gov/psdonline/psdDataPublications.aspx>

Archives *World Market and Trade* and *World Agricultural Production* Reports:

<http://usda.mannlib.cornell.edu/MannUsda/viewTaxonomy.do?taxonomyID=7>

Production, Supply and Distribution Database (PSD Online):

<http://apps.fas.usda.gov/psdonline/psdHome.aspx>

EU Countries Area & Production Estimates

<http://apps.fas.usda.gov/psdonline/psdDownload.aspx>

Global Agricultural Trade System (U.S. Exports and Imports):

<http://apps.fas.usda.gov/gats/default.aspx>

Export Sales Report:

<http://apps.fas.usda.gov/esrquery/>

Global Agricultural Information Network (Agricultural Attaché Reports):

<http://gain.fas.usda.gov/Pages/Default.aspx>

Other USDA Reports:

World Agricultural Supply and Demand Estimates (WASDE):

<http://www.usda.gov/oce/commodity/wasde/>

Economic Research Service:

<http://www.ers.usda.gov/topics/crops>

National Agricultural Statistics Service:

<http://www.nass.usda.gov/Publications/>

Table 01 World Crop Production Summary

Million Metric Tons

Commodity	World -	Total Foreign	North America			Former Soviet		Europea n	Asia (WAP)					South America		Selected Other			All Others
			United States	Canada -	Mexico -	Russia -	Ukraine -		China -	India -	Indo- nesia	Paki- stan	Thai- land	Argen- tina	Brazil -	Aus- tralia	South Africa	Turkey -	
Wheat 2015/16 2016/17 prel. 2017/18 proj. Feb Mar Coarse Grains 2015/16 2016/17 prel. 2017/18 proj. Feb Mar Rice, Milled 2015/16 2016/17 prel. 2017/18 proj. Feb Mar Total Grains 2015/16 2016/17 prel. 2017/18 proj. Feb Mar Oilseeds 2015/16 2016/17 prel. 2017/18 proj. Feb Mar Cotton 2015/16 2016/17 prel. 2017/18 proj. Feb Mar	---Million metric tons---																		
	735.2	679.1	56.1	27.6	3.7	61.0	27.3	nr	130.2	86.5	0.0	25.1	0.0	11.3	5.5	22.3	1.4	19.5	257.6
	750.5	687.7	62.8	31.7	3.9	72.5	26.8	nr	128.8	87.0	0.0	25.6	0.0	18.4	6.7	30.4	1.9	17.3	236.6
	758.2	710.9	47.4	30.0	3.5	85.0	27.0	nr	130.0	98.4	0.0	26.5	0.0	18.0	4.3	21.5	1.5	21.0	244.3
	758.8	711.4	47.4	30.0	3.5	85.0	27.0	nr	129.8	98.5	0.0	26.5	0.0	18.0	4.3	21.5	1.5	21.0	244.9
	1,260.4	893.4	367.0	25.6	32.4	37.4	33.4	nr	231.5	38.7	10.5	5.8	4.8	38.4	68.6	12.5	8.7	14.2	330.8
	1,364.7	962.1	402.6	25.8	33.3	40.8	39.2	nr	226.9	43.5	10.9	6.5	5.3	48.6	101.6	16.6	18.0	10.9	334.3
	1,321.9	937.7	384.3	26.2	32.1	42.0	34.1	nr	223.9	42.2	11.4	6.5	5.1	46.5	97.8	11.5	13.0	13.0	332.5
	1,322.0	937.7	384.3	26.2	32.1	41.7	34.1	nr	223.4	45.2	11.4	6.5	5.1	43.5	97.3	10.9	13.5	13.0	334.0
	472.9	466.8	6.1	0.0	0.2	0.7	0.0	nr	145.8	104.4	36.2	6.8	15.8	0.9	7.2	0.2	0.0	0.5	148.1
	486.2	479.0	7.1	0.0	0.2	0.7	0.0	nr	145.0	109.7	36.9	6.9	19.2	0.9	8.4	0.6	0.0	0.5	150.2
	484.3	478.7	5.7	0.0	0.2	0.6	0.0	nr	146.0	107.5	37.0	7.2	20.4	0.8	7.8	0.6	0.0	0.5	150.0
	486.3	480.6	5.7	0.0	0.2	0.6	0.0	nr	146.0	110.0	37.0	7.2	20.4	0.8	7.8	0.6	0.0	0.5	149.4
	2,468.6	2,039.3	429.3	53.2	36.2	99.2	60.7	nr	507.4	229.6	46.7	37.7	20.6	50.6	81.4	35.0	10.1	34.2	736.5
	2,601.4	2,128.8	472.6	57.5	37.4	114.0	66.1	nr	500.7	240.2	47.8	39.0	24.5	67.8	116.7	47.6	19.9	28.6	721.2
	2,564.5	2,127.2	437.3	56.2	35.8	127.6	61.1	nr	499.9	248.1	48.4	40.2	25.5	65.3	109.9	33.6	14.4	34.6	726.8
	2,567.0	2,129.7	437.3	56.2	35.8	127.3	61.1	nr	499.2	253.7	48.4	40.2	25.5	62.2	109.4	33.0	15.0	34.6	728.3
	521.5	405.7	115.9	24.9	1.0	12.9	17.6	nr	54.5	29.4	11.8	3.5	0.9	60.8	99.0	3.7	1.5	2.3	82.0
	575.3	448.4	126.9	26.2	1.1	15.0	20.7	nr	56.5	37.8	12.8	3.7	0.9	62.8	117.0	5.4	2.3	2.7	83.3
	578.6	447.3	131.3	29.6	1.3	15.5	19.1	nr	58.5	35.6	13.4	4.0	1.0	59.1	115.3	4.4	2.1	3.3	85.2
574.5	443.2	131.3	29.6	1.3	15.5	19.1	nr	60.3	34.8	13.4	4.0	1.0	52.1	116.3	4.8	2.3	3.3	85.4	
96.2	83.3	12.9	0.0	0.9	0.0	0.0	1.3	22.0	25.9	0.0	7.0	0.0	0.8	5.9	2.9	0.0	2.7	13.9	
106.8	89.6	17.2	0.0	0.8	0.0	0.0	1.3	22.8	27.0	0.0	7.7	0.0	0.8	7.0	4.1	0.1	3.2	15.0	
121.4	100.1	21.3	0.0	1.5	0.0	0.0	1.5	27.5	28.5	0.0	8.2	0.0	0.9	8.0	4.4	0.2	4.0	15.3	
121.9	100.9	21.0	0.0	1.5	0.0	0.0	1.5	27.5	28.5	0.0	8.2	0.0	0.8	8.0	4.7	0.2	4.0	15.9	

1/ Includes wheat, coarse grains, and rice (milled) shown above.

Table 02 Wheat Area, Yield, and Production

Country / Region	Area (Million hectares)				Yield (Metric tons per hectare)				Production (Million metric tons)				Change in Production			
	Prel.		2017/18 Proj.		Prel.		2017/18 Proj.		Prel.		2017/18 Proj.		From last month		From last year	
	2015/16	2016/17	Feb	Mar	2015/16	2016/17	Feb	Mar	2015/16	2016/17	Feb	Mar	MMT	Percent	MMT	Percent
World	223.66	221.79	219.79	219.71	3.29	3.38	3.45	3.45	735.21	750.51	758.25	758.79	0.54	0.07	8.28	1.10
United States	19.15	17.75	15.21	15.21	2.93	3.54	3.11	3.11	56.12	62.83	47.37	47.37	0.00	0.00	-15.46	-24.61
Total Foreign	204.51	204.04	204.58	204.49	3.32	3.37	3.47	3.48	679.09	687.67	710.88	711.42	0.54	0.08	23.75	3.45
European Union	26.83	27.26	26.47	26.40	5.98	5.33	5.73	5.74	160.48	145.25	151.60	151.60	0.00	0.00	6.35	4.37
China	24.14	24.19	24.20	23.99	5.39	5.33	5.37	5.41	130.19	128.85	130.00	129.77	-0.23	-0.18	0.93	0.72
South Asia																
India	31.47	30.42	30.60	30.79	2.75	2.86	3.22	3.20	86.53	87.00	98.38	98.51	0.13	0.13	11.51	13.23
Pakistan	9.20	9.22	9.05	9.05	2.73	2.78	2.93	2.93	25.09	25.63	26.50	26.50	0.00	0.00	0.87	3.38
Afghanistan	2.55	2.55	2.55	2.55	1.96	2.00	1.96	1.96	5.00	5.10	5.00	5.00	0.00	0.00	-0.10	-1.96
Nepal	0.77	0.77	0.77	0.77	2.25	2.23	2.31	2.31	1.74	1.72	1.78	1.78	0.00	0.00	0.06	3.61
Former Soviet Union - 12																
Russia	25.58	27.00	27.20	27.34	2.39	2.69	3.13	3.11	61.04	72.53	85.00	84.99	-0.01	-0.01	12.46	17.18
Ukraine	7.12	6.46	6.64	6.64	3.83	4.15	4.06	4.06	27.27	26.79	26.98	26.98	0.00	0.00	0.19	0.71
Kazakhstan	11.57	12.37	11.80	11.91	1.19	1.21	1.19	1.24	13.75	14.99	14.00	14.80	0.80	5.73	-0.18	-1.22
Uzbekistan	1.40	1.40	1.40	1.40	5.14	5.14	5.14	5.14	7.20	7.20	7.20	7.20	0.00	0.00	0.00	0.00
Belarus	0.73	0.71	0.70	0.70	3.96	3.29	3.71	3.71	2.90	2.34	2.60	2.60	0.00	0.00	0.26	11.11
Canada	9.58	8.88	9.00	9.00	2.88	3.57	3.33	3.33	27.59	31.73	30.00	30.00	0.00	0.00	-1.73	-5.45
South America																
Argentina	3.95	5.56	5.60	5.60	2.86	3.31	3.21	3.21	11.30	18.40	18.00	18.00	0.00	0.00	-0.40	-2.17
Brazil	2.45	2.12	1.90	1.92	2.26	3.17	2.24	2.23	5.54	6.73	4.25	4.26	0.01	0.33	-2.47	-36.64
Uruguay	0.33	0.22	0.19	0.19	3.61	3.52	3.24	3.24	1.19	0.76	0.60	0.60	0.00	0.00	-0.16	-20.74
Australia	11.28	11.72	12.50	12.25	1.97	2.59	1.72	1.76	22.28	30.36	21.50	21.50	0.00	0.00	-8.86	-29.19
Africa																
Egypt	1.26	1.26	1.26	1.26	6.43	6.43	6.43	6.43	8.10	8.10	8.10	8.10	0.00	0.00	0.00	0.00
Morocco	3.31	2.41	3.32	3.32	2.44	1.13	1.88	1.88	8.06	2.73	6.25	6.25	0.00	0.00	3.52	128.85
Ethiopia	1.60	1.60	1.60	1.60	2.19	2.44	2.63	2.63	3.50	3.90	4.20	4.20	0.00	0.00	0.30	7.69
Algeria	2.10	1.30	1.60	1.60	1.29	1.54	1.50	1.50	2.70	2.00	2.40	2.40	0.00	0.00	0.40	20.00
Middle East																
Turkey	7.86	7.82	7.80	7.80	2.48	2.21	2.69	2.69	19.50	17.25	21.00	21.00	0.00	0.00	3.75	21.74
Iran	6.80	6.80	6.80	6.80	2.21	2.28	2.21	2.21	15.00	15.50	15.00	15.00	0.00	0.00	-0.50	-3.23
Iraq	2.45	2.35	2.23	2.23	1.80	1.80	1.81	1.81	4.41	4.23	4.03	4.03	0.00	0.00	-0.20	-4.73
Syria	1.45	1.10	1.10	1.10	2.41	2.18	2.00	2.00	3.50	2.40	2.20	2.20	0.00	0.00	-0.20	-8.33
Mexico	0.82	0.72	0.67	0.67	4.53	5.34	5.26	5.26	3.71	3.87	3.50	3.50	0.00	0.00	-0.37	-9.44
Others	7.93	7.83	7.64	7.63	2.71	2.85	2.72	2.70	21.52	22.33	20.81	20.64	-0.17	-0.80	-1.69	-7.57

World and Selected Countries and Regions

Table 03 Total Coarse Grain Area, Yield, and Production

Country / Region	Area (Million hectares)				Yield (Metric tons per hectare)				Production (Million metric tons)				Change in Production			
	Prel.		2017/18 Proj.		Prel.		2017/18 Proj.		Prel.		2017/18 Proj.		From last month		From last year	
	2015/16	2016/17	Feb	Mar	2015/16	2016/17	Feb	Mar	2015/16	2016/17	Feb	Mar	MMT	Percent	MMT	Percent
World	322.82	325.34	321.01	320.27	3.90	4.19	4.12	4.13	1,260.44	1,364.72	1,321.94	1,321.96	0.03	0.00	-42.76	-3.13
United States	37.80	39.20	36.74	36.74	9.71	10.27	10.46	10.46	367.01	402.61	384.26	384.26	0.00	0.00	-18.36	-4.56
Total Foreign	285.02	286.14	284.26	283.53	3.13	3.36	3.30	3.31	893.43	962.11	937.68	937.71	0.03	0.00	-24.40	-2.54
China	40.17	38.88	37.72	37.63	5.76	5.83	5.94	5.94	231.49	226.87	223.93	223.39	-0.54	-0.24	-3.48	-1.53
European Union	30.21	29.40	29.49	29.47	5.05	5.19	5.11	5.15	152.67	152.59	150.80	151.64	0.85	0.56	-0.95	-0.62
South America																
Brazil	16.90	18.62	18.79	18.69	4.06	5.46	5.21	5.21	68.65	101.58	97.79	97.29	-0.50	-0.51	-4.29	-4.22
Argentina	5.98	6.84	7.06	7.06	6.43	7.11	6.58	6.15	38.44	48.57	46.45	43.45	-3.00	-6.46	-5.12	-10.53
Former Soviet Union - 12																
Russia	15.23	15.14	14.63	14.74	2.46	2.69	2.87	2.83	37.43	40.77	42.00	41.71	-0.28	-0.67	0.95	2.32
Ukraine	7.62	7.82	7.59	7.59	4.38	5.01	4.49	4.49	33.39	39.22	34.07	34.07	0.00	0.00	-5.15	-13.12
Kazakhstan	2.46	2.33	2.47	2.49	1.51	1.90	1.54	1.79	3.73	4.43	3.80	4.45	0.66	17.31	0.02	0.50
Belarus	0.95	0.96	1.15	1.15	3.48	3.16	3.48	3.48	3.32	3.03	4.00	4.00	0.00	0.00	0.97	31.84
Africa																
Nigeria	12.75	12.75	12.65	12.65	1.31	1.52	1.49	1.49	16.68	19.34	18.85	18.85	0.00	0.00	-0.49	-2.51
South Africa	2.41	3.18	2.99	2.89	3.61	5.67	4.34	4.66	8.68	18.04	12.96	13.46	0.50	3.86	-4.57	-25.36
Tanzania	5.15	5.33	5.35	5.35	1.39	1.12	1.21	1.21	7.17	5.94	6.50	6.50	0.00	0.00	0.56	9.43
Burkina	3.85	3.85	3.85	3.85	1.00	1.09	1.14	1.14	3.85	4.18	4.40	4.40	0.00	0.00	0.22	5.26
Ethiopia	5.41	5.64	5.66	5.66	2.41	2.25	2.30	2.30	13.04	12.70	13.04	13.04	0.00	0.00	0.34	2.64
Egypt	0.97	0.97	0.97	0.97	7.05	7.05	7.05	7.05	6.86	6.86	6.86	6.86	0.00	0.00	0.00	0.00
Mali	3.95	3.85	3.85	3.85	1.43	1.56	1.27	1.27	5.67	6.01	4.90	4.90	0.00	0.00	-1.11	-18.50
India	24.36	25.44	24.23	23.84	1.59	1.71	1.74	1.90	38.70	43.47	42.24	45.20	2.96	7.01	1.73	3.98
Southeast Asia																
Indonesia	3.30	3.40	3.50	3.50	3.18	3.21	3.24	3.24	10.50	10.90	11.35	11.35	0.00	0.00	0.45	4.13
Philippines	2.42	2.69	2.65	2.65	2.88	3.03	3.09	3.09	6.97	8.13	8.20	8.20	0.00	0.00	0.07	0.85
Vietnam	1.15	1.10	1.05	1.05	4.55	4.60	4.65	4.65	5.23	5.06	4.88	4.88	0.00	0.00	-0.18	-3.48
Thailand	1.12	1.20	1.15	1.15	4.25	4.39	4.39	4.39	4.76	5.25	5.05	5.05	0.00	0.00	-0.20	-3.81
Mexico	9.25	9.34	9.03	9.03	3.50	3.57	3.55	3.55	32.38	33.33	32.08	32.08	0.00	0.00	-1.25	-3.75
Canada	4.88	4.66	4.72	4.72	5.25	5.54	5.56	5.56	25.62	25.79	26.21	26.21	0.00	0.00	0.41	1.59
Australia	5.58	6.09	5.41	5.28	2.25	2.73	2.13	2.07	12.54	16.63	11.50	10.90	-0.60	-5.22	-5.73	-34.47
Middle East																
Turkey	4.31	4.26	4.29	4.29	3.31	2.56	3.04	3.04	14.24	10.89	13.04	13.04	0.00	0.00	2.15	19.74
Iran	1.74	1.74	1.84	1.84	3.20	3.20	3.08	3.08	5.56	5.56	5.66	5.66	0.00	0.00	0.10	1.80
Others	72.91	70.68	72.21	72.16	1.45	1.51	1.48	1.48	105.89	106.99	107.15	107.13	-0.02	-0.01	0.14	0.13

World and Selected Countries and Regions; Coarse Grain includes: Barley, Corn, Millet, Mixed Grains, Oats, Rye and Sorghum

Table 04 Corn Area, Yield, and Production

Country / Region	Area (Million hectares)				Yield (Metric tons per hectare)				Production (Million metric tons)				Change in Production			
	Prel.		2017/18 Proj.		Prel.		2017/18 Proj.		Prel.		2017/18 Proj.		From last month		From last year	
	2015/16	2016/17	Feb	Mar	2015/16	2016/17	Feb	Mar	2015/16	2016/17	Feb	Mar	MMT	Percent	MMT	Percent
World	180.93	185.97	184.43	184.27	5.38	5.78	5.65	5.65	973.45	1,075.23	1,041.73	1,041.74	0.01	0.00	-33.49	-3.11
United States	32.68	35.11	33.47	33.47	10.57	10.96	11.08	11.08	345.51	384.78	370.96	370.96	0.00	0.00	-13.82	-3.59
Total Foreign	148.25	150.86	150.96	150.80	4.24	4.58	4.44	4.45	627.95	690.45	670.77	670.78	0.01	0.00	-19.67	-2.85
China	38.12	36.77	35.45	35.45	5.89	5.97	6.09	6.09	224.63	219.55	215.89	215.89	0.00	0.00	-3.66	-1.67
South America																
Brazil	16.00	17.60	17.70	17.60	4.19	5.60	5.37	5.37	67.00	98.50	95.00	94.50	-0.50	-0.53	-4.00	-4.06
Argentina	3.70	4.90	5.20	5.20	7.97	8.37	7.50	6.92	29.50	41.00	39.00	36.00	-3.00	-7.69	-5.00	-12.20
Bolivia	0.38	0.09	0.37	0.37	2.47	1.38	2.50	2.50	0.94	0.12	0.93	0.93	0.00	0.00	0.81	670.83
European Union	9.25	8.56	8.47	8.48	6.35	7.18	7.10	7.21	58.75	61.45	60.09	61.14	1.05	1.74	-0.31	-0.51
Africa																
South Africa	2.21	3.00	2.80	2.70	3.71	5.83	4.46	4.81	8.21	17.48	12.50	13.00	0.50	4.00	-4.48	-25.61
Nigeria	5.80	5.80	5.80	5.80	1.64	1.85	1.81	1.81	9.54	10.76	10.50	10.50	0.00	0.00	-0.26	-2.37
Ethiopia	2.15	2.20	2.22	2.22	3.16	2.89	2.93	2.93	6.80	6.35	6.50	6.50	0.00	0.00	0.15	2.36
Egypt	0.75	0.75	0.75	0.75	8.00	8.00	8.00	8.00	6.00	6.00	6.00	6.00	0.00	0.00	0.00	0.00
Tanzania	4.00	4.20	4.20	4.20	1.50	1.15	1.27	1.27	6.00	4.82	5.35	5.35	0.00	0.00	0.54	11.11
Malawi	1.75	1.65	1.70	1.70	1.59	1.44	2.12	2.12	2.78	2.37	3.60	3.60	0.00	0.00	1.23	51.96
Zambia	0.96	1.16	1.43	1.43	2.72	2.48	2.52	2.52	2.62	2.87	3.61	3.61	0.00	0.00	0.73	25.55
Kenya	2.10	2.10	2.10	2.10	1.76	1.49	1.40	1.40	3.69	3.13	2.95	2.95	0.00	0.00	-0.18	-5.75
Uganda	1.10	1.10	1.10	1.10	2.04	2.18	2.27	2.27	2.25	2.40	2.50	2.50	0.00	0.00	0.10	4.17
Zimbabwe	1.53	0.77	1.88	1.88	0.48	0.66	1.15	1.15	0.74	0.51	2.16	2.16	0.00	0.00	1.64	320.90
Former Soviet Union - 12																
Ukraine	4.09	4.24	4.43	4.43	5.71	6.60	5.44	5.44	23.33	27.97	24.12	24.12	0.00	0.00	-3.85	-13.78
Russia	2.67	2.78	2.75	2.70	4.93	5.51	4.91	4.90	13.17	15.31	13.50	13.23	-0.27	-2.01	-2.08	-13.56
South Asia																
India	8.73	9.89	9.50	9.60	2.59	2.62	2.63	2.83	22.57	25.90	25.00	27.15	2.15	8.60	1.25	4.83
Pakistan	1.21	1.35	1.30	1.30	4.38	4.45	4.62	4.62	5.30	6.00	6.00	6.00	0.00	0.00	0.00	0.00
Nepal	0.85	0.90	0.90	0.90	2.35	2.22	2.22	2.22	2.00	2.00	2.00	2.00	0.00	0.00	0.00	0.00
Southeast Asia																
Indonesia	3.30	3.40	3.50	3.50	3.18	3.21	3.24	3.24	10.50	10.90	11.35	11.35	0.00	0.00	0.45	4.13
Philippines	2.42	2.69	2.65	2.65	2.88	3.03	3.09	3.09	6.97	8.13	8.20	8.20	0.00	0.00	0.07	0.85
Vietnam	1.15	1.10	1.05	1.05	4.55	4.60	4.65	4.65	5.23	5.06	4.88	4.88	0.00	0.00	-0.18	-3.48
Thailand	1.09	1.17	1.12	1.12	4.31	4.45	4.45	4.45	4.70	5.20	5.00	5.00	0.00	0.00	-0.20	-3.85
Mexico	7.21	7.51	7.23	7.23	3.60	3.67	3.67	3.67	25.97	27.58	26.50	26.50	0.00	0.00	-1.08	-3.90
Canada	1.31	1.33	1.41	1.41	10.33	9.96	10.04	10.04	13.56	13.19	14.10	14.10	0.00	0.00	0.91	6.87
Turkey	0.62	0.57	0.60	0.60	10.00	9.65	10.00	10.00	6.20	5.50	6.00	6.00	0.00	0.00	0.50	9.09
Others	23.80	23.30	23.36	23.34	2.48	2.59	2.46	2.47	59.00	60.42	57.56	57.64	0.08	0.14	-2.78	-4.60

World and Selected Countries and Regions

Table 05 Barley Area, Yield, and Production

Country / Region	Area (Million hectares)				Yield (Metric tons per hectare)				Production (Million metric tons)				Change in Production			
	Prel.		2017/18 Proj.		Prel.		2017/18 Proj.		Prel.		2017/18 Proj.		From last month		From last year	
	2015/16	2016/17	Feb	Mar	2015/16	2016/17	Feb	Mar	2015/16	2016/17	Feb	Mar	MMT	Percent	MMT	Percent
World	50.34	48.47	47.57	47.53	2.97	3.01	2.99	3.00	149.64	145.96	142.08	142.37	0.29	0.20	-3.60	-2.46
United States	1.28	1.04	0.79	0.79	3.72	4.19	3.91	3.91	4.75	4.35	3.09	3.09	0.00	0.00	-1.26	-29.01
Total Foreign	49.06	47.44	46.78	46.74	2.95	2.99	2.97	2.98	144.89	141.61	138.99	139.28	0.29	0.21	-2.33	-1.65
European Union	12.25	12.29	12.34	12.31	5.07	4.87	4.76	4.77	62.10	59.86	58.68	58.73	0.05	0.08	-1.13	-1.89
Former Soviet Union - 12																
Russia	8.04	7.96	7.70	7.85	2.12	2.21	2.62	2.57	17.08	17.55	20.20	20.18	-0.02	-0.08	2.64	15.02
Ukraine	3.00	3.05	2.65	2.65	2.92	3.24	3.28	3.28	8.75	9.87	8.70	8.70	0.00	0.00	-1.18	-11.94
Kazakhstan	2.04	1.89	2.05	2.07	1.31	1.71	1.32	1.60	2.68	3.23	2.70	3.31	0.61	22.41	0.07	2.29
Belarus	0.50	0.45	0.55	0.55	3.70	2.78	3.45	3.45	1.85	1.25	1.90	1.90	0.00	0.00	0.65	51.64
Azerbaijan	0.36	0.35	0.35	0.35	2.95	2.71	2.71	2.71	1.06	0.95	0.95	0.95	0.00	0.00	0.00	0.00
Canada	2.35	2.22	2.10	2.10	3.49	3.95	3.76	3.76	8.23	8.78	7.90	7.90	0.00	0.00	-0.88	-10.06
Australia	4.11	4.62	3.90	3.90	2.19	2.79	2.05	2.05	8.99	12.92	8.00	8.00	0.00	0.00	-4.92	-38.09
Middle East																
Turkey	3.40	3.40	3.40	3.40	2.18	1.40	1.88	1.88	7.40	4.75	6.40	6.40	0.00	0.00	1.65	34.74
Iran	1.30	1.30	1.40	1.40	2.31	2.31	2.21	2.21	3.00	3.00	3.10	3.10	0.00	0.00	0.10	3.33
Iraq	1.25	1.20	1.07	1.07	1.24	1.29	1.24	1.24	1.55	1.55	1.33	1.33	0.00	0.00	-0.23	-14.52
Syria	0.70	0.45	0.45	0.45	0.71	0.72	0.71	0.71	0.50	0.33	0.32	0.32	0.00	0.00	-0.01	-1.54
Africa																
Ethiopia	1.20	1.20	1.20	1.20	1.63	1.71	1.73	1.73	1.95	2.05	2.07	2.07	0.00	0.00	0.02	0.98
Morocco	2.06	1.21	1.80	1.80	1.65	0.51	1.11	1.11	3.40	0.62	2.00	2.00	0.00	0.00	1.38	222.58
Algeria	1.00	0.90	0.76	0.76	1.30	1.11	1.27	1.27	1.30	1.00	0.97	0.97	0.00	0.00	-0.03	-3.20
Tunisia	0.38	0.28	0.38	0.38	0.97	1.34	1.33	1.33	0.37	0.38	0.50	0.50	0.00	0.00	0.13	33.33
South Africa	0.09	0.09	0.09	0.09	3.53	3.98	3.11	3.11	0.33	0.35	0.28	0.28	0.00	0.00	-0.07	-20.90
South America																
Argentina	1.25	0.87	0.76	0.76	3.95	3.79	4.21	4.21	4.94	3.30	3.20	3.20	0.00	0.00	-0.10	-3.03
Uruguay	0.09	0.19	0.10	0.10	3.83	3.57	4.10	4.10	0.36	0.68	0.41	0.41	0.00	0.00	-0.27	-39.53
Brazil	0.13	0.10	0.11	0.11	2.07	3.91	2.67	2.67	0.26	0.38	0.29	0.29	0.00	0.00	-0.08	-22.40
India	0.71	0.59	0.73	0.66	2.28	2.44	2.39	2.67	1.61	1.44	1.74	1.75	0.01	0.57	0.31	21.53
China	0.45	0.43	0.52	0.43	4.18	4.08	4.04	4.19	1.87	1.75	2.10	1.80	-0.30	-14.29	0.05	2.74
Mexico	0.32	0.33	0.30	0.30	2.33	2.96	2.45	2.45	0.74	0.98	0.74	0.74	0.00	0.00	-0.24	-24.85
Afghanistan	0.28	0.28	0.28	0.28	1.43	1.50	1.46	1.46	0.40	0.42	0.41	0.41	0.00	0.00	-0.01	-2.38
Others	1.80	1.79	1.80	1.78	2.32	2.35	2.29	2.28	4.18	4.22	4.11	4.06	-0.06	-1.43	-0.17	-3.93

World and Selected Countries and Regions

Table 06 Oats Area, Yield, and Production

Country / Region	Area (Million hectares)				Yield (Metric tons per hectare)				Production (Million metric tons)				Change in Production			
	Prel.		2017/18 Proj.		Prel.		2017/18 Proj.		Prel.		2017/18 Proj.		From last month		From last year	
	2015/16	2016/17	Feb	Mar	2015/16	2016/17	Feb	Mar	2015/16	2016/17	Feb	Mar	MMT	Percent	MMT	Percent
World	9.49	9.56	9.52	9.54	2.32	2.51	2.47	2.47	22.03	23.97	23.52	23.60	0.08	0.34	-0.37	-1.54
United States	0.52	0.40	0.32	0.32	2.52	2.37	2.21	2.21	1.30	0.94	0.72	0.72	0.00	0.00	-0.22	-23.72
Total Foreign	8.98	9.16	9.20	9.22	2.31	2.51	2.48	2.48	20.73	23.03	22.80	22.89	0.08	0.36	-0.15	-0.63
European Union	2.51	2.56	2.62	2.62	3.00	3.14	3.08	3.06	7.52	8.04	8.07	8.03	-0.04	-0.55	-0.01	-0.09
Former Soviet Union - 12																
Russia	2.83	2.75	2.78	2.78	1.60	1.73	1.96	1.96	4.53	4.75	5.44	5.44	0.00	0.02	0.69	14.55
Ukraine	0.22	0.21	0.21	0.21	2.29	2.38	2.31	2.31	0.50	0.51	0.48	0.48	0.00	0.00	-0.03	-5.69
Belarus	0.15	0.15	0.15	0.15	3.26	2.67	3.33	3.33	0.49	0.39	0.50	0.50	0.00	0.00	0.11	28.21
Kazakhstan	0.20	0.21	0.22	0.21	1.20	1.60	1.26	1.34	0.24	0.34	0.27	0.29	0.02	5.56	-0.05	-14.93
Canada	1.06	0.91	1.05	1.05	3.25	3.52	3.52	3.52	3.43	3.20	3.70	3.70	0.00	0.00	0.51	15.81
South America																
Argentina	0.24	0.32	0.30	0.30	2.30	2.45	2.24	2.24	0.55	0.79	0.66	0.66	0.00	0.00	-0.13	-15.92
Brazil	0.19	0.29	0.34	0.34	1.85	2.84	2.01	2.01	0.35	0.83	0.68	0.68	0.00	0.00	-0.15	-17.63
Chile	0.11	0.14	0.14	0.14	4.94	5.20	4.75	4.75	0.53	0.71	0.67	0.67	0.00	0.00	-0.04	-6.03
Uruguay	0.03	0.03	0.03	0.03	1.38	1.58	1.52	1.52	0.04	0.04	0.04	0.04	0.00	0.00	0.00	-7.32
Oceania																
Australia	0.82	0.96	0.74	0.74	1.58	2.23	1.49	1.49	1.30	2.13	1.10	1.10	0.00	0.00	-1.03	-48.26
New Zealand	0.01	0.01	0.01	0.01	4.83	5.38	5.00	5.67	0.03	0.04	0.04	0.03	0.00	-2.86	-0.01	-20.93
China	0.20	0.21	0.19	0.21	1.36	1.41	1.00	1.43	0.27	0.29	0.19	0.30	0.11	57.89	0.01	3.45
Africa																
Algeria	0.09	0.09	0.09	0.09	1.29	1.29	1.29	1.29	0.11	0.11	0.11	0.11	0.00	0.00	0.00	0.00
Morocco	0.05	0.05	0.05	0.05	1.19	1.44	1.44	1.44	0.06	0.07	0.07	0.07	0.00	0.00	0.00	0.00
South Africa	0.03	0.03	0.03	0.03	1.83	1.83	1.83	1.83	0.06	0.06	0.06	0.06	0.00	0.00	0.00	0.00
Other Europe																
Norway	0.06	0.08	0.08	0.08	4.54	4.34	4.00	4.00	0.29	0.33	0.30	0.30	0.00	0.00	-0.03	-9.09
Serbia	0.03	0.03	0.03	0.03	2.20	2.17	2.17	2.17	0.07	0.07	0.07	0.07	0.00	0.00	0.00	0.00
Albania	0.01	0.01	0.01	0.01	2.08	2.08	2.08	2.08	0.03	0.03	0.03	0.03	0.00	0.00	0.00	0.00
Bosnia and Herzegovina	0.01	0.01	0.01	0.01	2.67	2.90	2.57	2.57	0.02	0.03	0.02	0.02	0.00	0.00	-0.01	-37.93
Turkey	0.09	0.09	0.09	0.09	2.33	2.33	2.33	2.33	0.21	0.21	0.21	0.21	0.00	0.00	0.00	0.00
Mexico	0.05	0.04	0.05	0.05	1.81	1.89	1.80	1.80	0.09	0.07	0.09	0.09	0.00	0.00	0.02	25.00
Others	0.01	0.01	0.01	0.01	1.93	1.79	1.79	1.79	0.03	0.03	0.03	0.03	0.00	0.00	0.00	0.00

World and Selected Countries and Regions

Table 07 Rye Area, Yield, and Production

Country / Region	Area (Million hectares)				Yield (Metric tons per hectare)				Production (Million metric tons)				Change in Production			
	Prel.		2017/18 Proj.		Prel.		2017/18 Proj.		Prel.		2017/18 Proj.		From last month		From last year	
	2015/16	2016/17	Feb	Mar	2015/16	2016/17	Feb	Mar	2015/16	2016/17	Feb	Mar	MMT	Percent	MMT	Percent
World	4.15	4.14	4.11	4.12	2.93	3.00	3.05	3.04	12.17	12.41	12.52	12.50	-0.02	-0.16	0.09	0.75
United States	0.15	0.17	0.12	0.12	1.99	2.04	2.12	2.12	0.30	0.34	0.25	0.25	0.00	0.00	-0.10	-28.07
Total Foreign	4.00	3.97	3.99	4.00	2.97	3.04	3.07	3.06	11.88	12.07	12.27	12.25	-0.02	-0.16	0.19	1.57
European Union	1.96	1.90	1.96	1.96	3.99	3.94	3.83	3.81	7.83	7.49	7.52	7.48	-0.03	-0.44	-0.01	-0.12
Former Soviet Union - 12																
Russia	1.25	1.25	1.17	1.17	1.67	2.03	2.17	2.17	2.08	2.54	2.54	2.54	0.00	0.16	0.01	0.24
Belarus	0.25	0.24	0.30	0.30	3.01	2.70	2.67	2.67	0.75	0.65	0.80	0.80	0.00	0.00	0.15	22.89
Ukraine	0.15	0.15	0.17	0.17	2.59	2.72	2.97	2.97	0.39	0.39	0.51	0.51	0.00	0.00	0.12	29.44
Kazakhstan	0.04	0.04	0.02	0.03	0.97	1.14	1.25	1.26	0.04	0.04	0.03	0.04	0.01	30.00	0.00	-4.88
Turkey	0.14	0.14	0.14	0.14	2.50	2.50	2.50	2.50	0.35	0.35	0.35	0.35	0.00	0.00	0.00	0.00
Canada	0.10	0.13	0.10	0.10	2.38	3.22	3.30	3.30	0.23	0.42	0.32	0.32	0.00	0.00	-0.10	-22.89
South America																
Chile	0.00	0.00	0.00	0.00	5.00	5.00	5.00	5.00	0.01	0.01	0.01	0.01	0.00	0.00	0.00	0.00
Argentina	0.03	0.04	0.04	0.04	1.79	1.93	2.10	2.10	0.06	0.08	0.08	0.08	0.00	0.00	0.00	3.80
Other Europe																
Bosnia and Herzegovina	0.00	0.00	0.00	0.00	2.50	3.25	2.75	2.75	0.01	0.01	0.01	0.01	0.00	0.00	0.00	-15.38
Switzerland	0.00	0.00	0.00	0.00	5.50	5.50	5.50	5.50	0.01	0.01	0.01	0.01	0.00	0.00	0.00	0.00
Serbia	0.00	0.00	0.00	0.00	2.50	2.50	2.50	2.50	0.01	0.01	0.01	0.01	0.00	0.00	0.00	0.00
Australia	0.04	0.04	0.04	0.04	0.61	0.63	0.65	0.65	0.02	0.03	0.03	0.03	0.00	0.00	0.00	4.00
Others	0.04	0.03	0.04	0.04	2.24	1.21	1.72	1.72	0.08	0.04	0.06	0.06	0.00	0.00	0.02	55.00

World and Selected Countries and Regions

Table 08 Sorghum Area, Yield, and Production

Country / Region	Area (Million hectares)				Yield (Metric tons per hectare)				Production (Million metric tons)				Change in Production			
	Prel.		2017/18 Proj.		Prel.		2017/18 Proj.		Prel.		2017/18 Proj.		From last month		From last year	
	2015/16	2016/17	Feb	Mar	2015/16	2016/17	Feb	Mar	2015/16	2016/17	Feb	Mar	MMT	Percent	MMT	Percent
World	43.93	42.68	41.62	41.22	1.40	1.46	1.43	1.42	61.41	62.42	59.45	58.36	-1.09	-1.83	-4.06	-6.50
United States	3.18	2.49	2.04	2.04	4.77	4.89	4.53	4.53	15.16	12.20	9.24	9.24	0.00	0.00	-2.96	-24.24
Total Foreign	40.75	40.19	39.58	39.18	1.13	1.25	1.27	1.25	46.25	50.22	50.21	49.12	-1.09	-2.17	-1.10	-2.19
Africa																
Nigeria	5.45	5.45	5.35	5.35	1.04	1.26	1.22	1.22	5.66	6.89	6.55	6.55	0.00	0.00	-0.34	-4.89
Ethiopia	1.70	1.80	1.80	1.80	2.29	2.00	2.09	2.09	3.90	3.60	3.77	3.77	0.00	0.00	0.17	4.58
Sudan	8.00	8.00	8.00	8.00	0.30	0.73	0.56	0.56	2.39	5.86	4.50	4.50	0.00	0.00	-1.36	-23.26
Burkina	1.80	1.80	1.80	1.80	0.80	0.93	1.00	1.00	1.44	1.68	1.80	1.80	0.00	0.00	0.12	7.14
Mali	1.25	1.25	1.25	1.25	1.22	1.12	1.04	1.04	1.53	1.39	1.30	1.30	0.00	0.00	-0.09	-6.74
Niger	3.70	3.70	3.70	3.70	0.51	0.49	0.46	0.46	1.88	1.81	1.70	1.70	0.00	0.00	-0.11	-5.97
Cameroon	0.75	0.75	0.75	0.75	1.53	1.53	1.53	1.53	1.15	1.15	1.15	1.15	0.00	0.00	0.00	0.00
Tanzania	0.80	0.80	0.80	0.80	1.03	1.00	1.00	1.00	0.82	0.80	0.80	0.80	0.00	0.00	0.00	0.00
Egypt	0.14	0.14	0.14	0.14	5.36	5.36	5.36	5.36	0.75	0.75	0.75	0.75	0.00	0.00	0.00	0.00
Uganda	0.35	0.35	0.35	0.35	0.91	0.91	0.97	0.97	0.32	0.32	0.34	0.34	0.00	0.00	0.02	6.25
Ghana	0.25	0.25	0.25	0.25	0.91	1.04	1.12	1.12	0.23	0.26	0.28	0.28	0.00	0.00	0.02	7.69
Mozambique	0.37	0.40	0.40	0.40	0.60	0.60	0.65	0.65	0.22	0.24	0.26	0.26	0.00	0.00	0.02	8.33
South Africa	0.05	0.04	0.05	0.05	1.45	3.75	2.50	2.50	0.07	0.15	0.13	0.13	0.00	0.00	-0.03	-16.67
Mexico	1.68	1.46	1.45	1.45	3.33	3.22	3.28	3.28	5.59	4.70	4.75	4.75	0.00	0.00	0.05	1.06
South America																
Argentina	0.75	0.70	0.76	0.76	4.50	4.86	4.61	4.61	3.38	3.40	3.50	3.50	0.00	0.00	0.10	2.94
Brazil	0.58	0.63	0.63	0.63	1.78	2.97	2.86	2.86	1.03	1.87	1.81	1.81	0.00	0.00	-0.06	-3.16
South Asia																
India	6.08	5.86	5.00	4.83	0.70	0.78	0.90	0.97	4.24	4.57	4.50	4.66	0.16	3.56	0.09	1.97
Pakistan	0.27	0.26	0.20	0.20	0.59	0.58	0.65	0.65	0.16	0.15	0.13	0.13	0.00	0.00	-0.02	-12.75
China	0.57	0.63	0.78	0.68	4.79	4.78	4.94	4.74	2.75	2.99	3.85	3.20	-0.65	-16.88	0.22	7.20
Australia	0.52	0.37	0.63	0.50	3.44	2.70	3.02	2.60	1.79	1.00	1.90	1.30	-0.60	-31.58	0.30	30.00
European Union	0.13	0.12	0.12	0.12	5.27	5.42	5.63	5.63	0.67	0.64	0.66	0.66	0.00	0.00	0.02	3.13
Others	5.56	5.44	5.37	5.37	1.13	1.10	1.08	1.08	6.29	6.01	5.80	5.80	0.00	0.00	-0.21	-3.56

World and Selected Countries and Regions

Table 09 Rice Area, Yield, and Production
World and Selected Countries and Regions

Country / Region	Area (Million hectares)				Yield (Metric tons per hectare)				Production (Million metric tons)				Change in Production			
	Prel.		2017/18 Proj.		Prel.		2017/18 Proj.		Prel.		2017/18 Proj.		From last month		From last year	
	2015/16	2016/17	Feb	Mar	2015/16	2016/17	Feb	Mar	2015/16	2016/17	Feb	Mar	MMT	Percent	MMT	Percent
World	159.31	160.76	160.43	161.27	4.43	4.51	4.50	4.50	472.94	486.15	484.33	486.26	1.93	0.40	0.11	0.02
United States	1.05	1.25	0.96	0.96	8.38	8.11	8.41	8.41	6.13	7.12	5.66	5.66	0.00	0.00	-1.46	-20.49
Total Foreign	158.27	159.51	159.47	160.31	4.40	4.48	4.48	4.48	466.81	479.04	478.67	480.60	1.93	0.40	1.57	0.33
East Asia																
China	30.21	30.18	30.18	30.18	6.89	6.86	6.91	6.91	145.77	144.95	146.00	145.99	-0.01	-0.01	1.04	0.71
Japan	1.59	1.57	1.56	1.56	6.64	6.81	6.69	6.69	7.67	7.78	7.60	7.60	0.00	0.00	-0.18	-2.31
Korea, South	0.80	0.78	0.76	0.76	7.22	7.18	7.01	7.01	4.33	4.20	3.97	3.97	0.00	0.00	-0.23	-5.36
Korea, North	0.48	0.50	0.50	0.50	4.21	4.92	4.77	4.77	1.30	1.60	1.55	1.55	0.00	0.00	-0.05	-3.13
South Asia																
India	43.38	43.10	42.70	43.70	3.61	3.82	3.78	3.78	104.41	109.70	107.50	110.00	2.50	2.33	0.30	0.27
Bangladesh	11.77	11.75	11.27	11.27	4.40	4.42	4.35	4.35	34.50	34.58	32.65	32.65	0.00	0.00	-1.93	-5.58
Pakistan	2.74	2.69	2.70	2.70	3.72	3.82	4.00	4.00	6.80	6.85	7.20	7.20	0.00	0.00	0.35	5.11
Nepal	1.50	1.50	1.50	1.50	2.87	3.23	3.25	3.25	2.86	3.22	3.25	3.25	0.00	0.00	0.03	0.81
Sri Lanka	1.23	0.68	1.00	0.81	3.95	4.35	4.27	4.12	3.29	2.00	2.90	2.28	-0.62	-21.38	0.28	14.17
Southeast Asia																
Indonesia	12.10	12.24	12.20	12.20	4.71	4.78	4.78	4.78	36.20	36.86	37.00	37.00	0.00	0.00	0.14	0.39
Vietnam	7.70	7.71	7.73	7.73	5.73	5.68	5.89	5.89	27.58	27.40	28.45	28.45	0.00	0.00	1.05	3.83
Thailand	9.44	10.25	10.70	10.70	2.53	2.84	2.89	2.89	15.80	19.20	20.40	20.40	0.00	0.00	1.20	6.25
Burma	6.90	7.03	7.10	7.10	2.75	2.81	2.85	2.85	12.16	12.65	12.95	12.95	0.00	0.00	0.30	2.37
Philippines	4.52	4.72	4.80	4.80	3.86	3.93	3.96	3.96	11.00	11.69	11.97	11.97	0.00	0.00	0.28	2.43
Cambodia	3.03	3.09	3.12	3.12	2.50	2.51	2.51	2.51	4.85	4.95	5.00	5.00	0.00	0.00	0.05	1.01
Laos	0.97	0.97	0.98	0.98	3.17	3.19	3.24	3.24	1.93	1.95	2.00	2.00	0.00	0.00	0.05	2.56
Malaysia	0.69	0.70	0.70	0.70	4.01	4.03	4.03	4.03	1.80	1.82	1.82	1.82	0.00	0.00	0.00	0.00
South America																
Brazil	2.01	1.98	2.00	2.00	5.28	6.22	5.75	5.75	7.21	8.38	7.82	7.82	0.00	0.00	-0.56	-6.72
Peru	0.42	0.42	0.45	0.45	7.56	7.54	7.93	7.93	2.17	2.19	2.45	2.45	0.00	0.00	0.26	11.95
Africa																
Egypt	0.65	0.85	0.76	0.76	8.92	8.18	8.18	8.18	4.00	4.80	4.30	4.30	0.00	0.00	-0.50	-10.42
Madagascar	1.45	1.48	1.43	1.43	2.57	2.59	2.25	2.25	2.38	2.44	2.05	2.05	0.00	0.00	-0.39	-16.13
Nigeria	3.10	3.20	3.20	3.20	1.81	1.81	1.81	1.81	3.53	3.65	3.65	3.65	0.00	0.00	0.00	0.00
European Union	0.44	0.44	0.44	0.44	6.78	6.79	6.88	6.88	2.05	2.07	2.09	2.09	0.00	0.00	0.02	1.06
Iran	0.63	0.63	0.63	0.63	4.32	4.32	4.32	4.32	1.78	1.78	1.78	1.78	0.00	0.00	0.00	0.00
Others	10.55	11.08	11.09	11.12	3.09	3.06	3.06	3.06	21.44	22.33	22.32	22.38	0.06	0.28	0.05	0.24

Yield is on a rough basis, before the milling process. Production is on a milled basis, after the milling process.

Table 10 Total Oilseed Area, Yield, and Production

World and Selected Countries and Regions

Country / Region	Area (Million hectares)				Yield (Metric tons per hectare)				Production (Million metric tons)				Change in Production			
	Prel.		2017/18 Proj.		Prel.		2017/18 Proj.		Prel.		2017/18 Proj.		From last month		From last year	
	2015/16	2016/17	Feb	Mar	2015/16	2016/17	Feb	Mar	2015/16	2016/17	Feb	Mar	MMT	Percent	MMT	Percent
World Total	--	--	--	--	--	--	--	--	521.53	575.30	578.62	574.50	-4.12	-0.71	-0.80	-0.14
Total Foreign	--	--	--	--	--	--	--	--	405.65	448.36	447.31	443.19	-4.12	-0.92	-5.18	-1.15
Oilseed, Copra	--	--	--	--	--	--	--	--	5.32	5.41	5.54	5.54	0.00	0.00	0.13	2.38
Oilseed, Palm Kernel	--	--	--	--	--	--	--	--	15.96	17.30	18.59	18.59	0.00	0.00	1.29	7.44
Major OilSeeds	232.34	233.75	244.83	244.62	2.15	2.36	2.26	2.25	500.25	552.58	554.48	550.36	-4.12	-0.74	-2.22	-0.40
United States	38.40	39.25	42.90	42.90	3.02	3.23	3.06	3.06	115.88	126.94	131.31	131.31	0.00	0.00	4.37	3.45
Foreign Oilseeds	193.94	194.50	201.93	201.72	1.98	2.19	2.10	2.08	384.37	425.65	423.18	419.05	-4.12	-0.97	-6.59	-1.55
South America	62.16	61.66	63.59	63.00	2.82	3.18	2.98	2.91	175.11	196.36	189.40	183.05	-6.35	-3.35	-13.31	-6.78
Brazil	34.43	35.03	36.31	36.31	2.87	3.34	3.17	3.20	98.91	116.94	115.21	116.21	1.00	0.87	-0.73	-0.62
Argentina	21.50	20.65	21.00	20.46	2.83	3.04	2.82	2.55	60.80	62.82	59.15	52.12	-7.03	-11.89	-10.70	-17.04
Paraguay	3.41	3.46	3.48	3.48	2.75	3.12	2.68	2.68	9.39	10.77	9.32	9.32	0.00	0.00	-1.45	-13.47
Bolivia	1.48	1.23	1.53	1.53	2.25	1.77	1.77	1.77	3.34	2.17	2.71	2.71	0.00	0.00	0.53	24.60
Uruguay	1.18	1.13	1.10	1.05	1.92	2.89	2.37	2.17	2.27	3.28	2.60	2.28	-0.32	-12.32	-1.00	-30.55
China	22.74	23.31	24.00	24.60	2.39	2.42	2.44	2.45	54.45	56.53	58.45	60.32	1.87	3.20	3.79	6.71
South Asia	38.32	37.13	38.16	37.36	0.85	1.11	1.03	1.03	32.50	41.16	39.25	38.45	-0.80	-2.04	-2.70	-6.57
India	34.75	34.00	34.63	33.83	0.82	1.09	1.01	1.01	28.64	37.03	34.88	34.08	-0.80	-2.29	-2.95	-7.97
Pakistan	3.22	2.77	3.17	3.17	1.07	1.34	1.25	1.25	3.45	3.71	3.96	3.96	0.00	0.00	0.25	6.60
European Union	11.84	11.76	12.32	12.32	2.74	2.71	2.79	2.79	32.44	31.91	34.39	34.39	0.00	0.00	2.47	7.75
Former Soviet Union - 12	21.32	22.54	23.41	23.61	1.61	1.77	1.66	1.66	34.39	39.91	38.95	39.12	0.17	0.42	-0.79	-1.98
Russia	9.43	10.20	10.55	10.66	1.37	1.47	1.47	1.45	12.88	14.99	15.50	15.48	-0.02	-0.13	0.49	3.28
Ukraine	8.31	8.71	9.17	9.17	2.11	2.38	2.08	2.08	17.58	20.74	19.10	19.10	0.00	0.00	-1.64	-7.90
Uzbekistan	1.29	1.18	1.20	1.15	1.16	1.19	1.16	1.17	1.49	1.40	1.39	1.34	-0.04	-3.03	-0.06	-4.00
Canada	10.59	10.35	12.19	12.19	2.35	2.53	2.43	2.43	24.91	26.20	29.56	29.56	0.00	0.00	3.36	12.80
Africa	18.37	18.41	18.73	18.95	0.89	0.92	0.91	0.93	16.36	16.85	17.09	17.71	0.62	3.61	0.85	5.06
Nigeria	3.46	3.48	3.47	3.47	1.09	1.09	1.09	1.09	3.77	3.77	3.78	3.78	0.00	0.00	0.00	0.08
South Africa	1.25	1.29	1.35	1.45	1.23	1.83	1.53	1.59	1.54	2.35	2.07	2.31	0.24	11.61	-0.04	-1.66
Tanzania	1.24	1.19	1.19	1.19	0.74	0.77	0.76	0.76	0.92	0.92	0.91	0.91	0.00	0.00	-0.01	-1.30
Southeast Asia	3.30	3.29	3.28	3.28	1.41	1.41	1.41	1.41	4.65	4.64	4.64	4.64	0.00	0.00	0.00	-0.02
Indonesia	1.06	1.03	1.01	1.01	1.62	1.64	1.62	1.62	1.71	1.69	1.64	1.64	0.00	0.00	-0.05	-2.72
Burma	1.87	1.88	1.88	1.88	1.18	1.18	1.19	1.19	2.22	2.21	2.24	2.24	0.00	0.00	0.03	1.13
Australia	2.45	3.14	3.10	3.29	1.52	1.74	1.41	1.44	3.74	5.45	4.38	4.75	0.38	8.61	-0.69	-12.69
Turkey	1.02	1.10	1.21	1.21	2.24	2.43	2.71	2.71	2.28	2.68	3.29	3.29	0.00	0.00	0.62	22.99
Others	1.83	1.82	1.94	1.91	1.93	2.19	1.96	1.98	3.53	3.97	3.79	3.79	0.00	0.00	-0.18	-4.59

World Total and Total Foreign: (Major Oilseeds plus copra and palm kernel) Major Oilseeds: (soybeans, sunflowerseeds, peanuts(inshell), cottonseed and rapeseed)

Table 11 Soybean Area, Yield, and Production

Country / Region	Area (Million hectares)				Yield (Metric tons per hectare)				Production (Million metric tons)				Change in Production			
	Prel.		2017/18 Proj.		Prel.		2017/18 Proj.		Prel.		2017/18 Proj.		From last month		From last year	
	2015/16	2016/17	Feb	Mar	2015/16	2016/17	Feb	Mar	2015/16	2016/17	Feb	Mar	MMT	Percent	MMT	Percent
World	120.43	120.29	125.81	125.40	2.61	2.92	2.76	2.72	313.77	351.32	346.92	340.86	-6.06	-1.75	-10.46	-2.98
United States	33.08	33.47	36.23	36.23	3.23	3.49	3.30	3.30	106.86	116.92	119.52	119.52	0.00	0.00	2.60	2.22
Total Foreign	87.35	86.83	89.58	89.17	2.37	2.70	2.54	2.48	206.91	234.40	227.40	221.34	-6.06	-2.67	-13.06	-5.57
South America																
Brazil	33.30	33.90	35.00	35.00	2.90	3.37	3.20	3.23	96.50	114.10	112.00	113.00	1.00	0.89	-1.10	-0.96
Argentina	19.53	18.35	18.50	18.00	2.91	3.15	2.92	2.61	56.80	57.80	54.00	47.00	-7.00	-12.96	-10.80	-18.69
Paraguay	3.26	3.39	3.40	3.40	2.82	3.15	2.71	2.71	9.22	10.67	9.20	9.20	0.00	0.00	-1.47	-13.74
Bolivia	1.34	1.13	1.40	1.40	2.40	1.86	1.86	1.86	3.21	2.11	2.60	2.60	0.00	0.00	0.49	23.40
Uruguay	1.14	1.09	1.05	1.00	1.94	2.95	2.41	2.20	2.21	3.21	2.52	2.20	-0.32	-12.70	-1.01	-31.55
East Asia																
China	6.51	7.20	7.85	7.85	1.81	1.79	1.81	1.81	11.79	12.90	14.20	14.20	0.00	0.00	1.30	10.08
Korea, South	0.06	0.05	0.07	0.07	1.82	1.53	1.79	1.79	0.10	0.08	0.12	0.12	0.00	0.00	0.05	60.00
Korea, North	0.16	0.15	0.15	0.15	1.39	1.33	1.33	1.33	0.22	0.20	0.20	0.20	0.00	0.00	0.00	0.00
Japan	0.14	0.15	0.16	0.16	1.70	1.57	1.68	1.68	0.24	0.24	0.26	0.26	0.00	0.00	0.02	10.17
India	11.67	11.40	10.50	10.50	0.59	1.01	0.90	0.90	6.93	11.50	9.50	9.50	0.00	0.00	-2.00	-17.39
Canada	2.23	2.21	2.90	2.90	2.90	2.97	2.76	2.76	6.46	6.55	8.00	8.00	0.00	0.00	1.45	22.10
Former Soviet Union - 12																
Russia	2.08	2.12	2.50	2.57	1.30	1.48	1.40	1.41	2.71	3.13	3.50	3.62	0.12	3.46	0.49	15.54
Ukraine	2.14	1.86	1.98	1.98	1.84	2.31	1.97	1.97	3.93	4.29	3.89	3.89	0.00	0.00	-0.40	-9.24
European Union	0.87	0.80	0.89	0.89	2.68	2.99	2.82	2.82	2.32	2.38	2.50	2.50	0.00	0.00	0.12	5.09
Southeast Asia																
Indonesia	0.44	0.43	0.42	0.42	1.32	1.31	1.29	1.29	0.58	0.57	0.54	0.54	0.00	0.00	-0.03	-4.42
Vietnam	0.09	0.10	0.11	0.11	1.57	1.57	1.57	1.57	0.15	0.16	0.17	0.17	0.00	0.00	0.01	5.10
Thailand	0.03	0.03	0.03	0.03	1.76	1.78	1.77	1.77	0.06	0.06	0.06	0.06	0.00	0.00	0.00	-3.51
Burma	0.15	0.15	0.15	0.15	1.07	1.07	1.07	1.07	0.16	0.16	0.16	0.16	0.00	0.00	0.00	0.00
Serbia	0.22	0.19	0.20	0.20	2.20	3.51	1.75	1.75	0.48	0.65	0.35	0.35	0.00	0.00	-0.30	-46.15
Mexico	0.25	0.28	0.26	0.26	1.36	1.83	1.85	1.85	0.34	0.51	0.48	0.48	0.00	0.00	-0.03	-5.70
Africa																
South Africa	0.50	0.57	0.70	0.78	1.48	2.29	1.75	1.77	0.74	1.32	1.23	1.38	0.15	12.24	0.06	4.48
Nigeria	0.70	0.70	0.70	0.70	0.96	0.96	0.96	0.96	0.68	0.68	0.68	0.68	0.00	0.00	0.00	0.00
Zambia	0.11	0.14	0.23	0.23	2.02	1.94	1.56	1.56	0.23	0.27	0.35	0.35	0.00	0.00	0.08	30.97
Uganda	0.05	0.05	0.05	0.05	0.60	0.60	0.60	0.60	0.03	0.03	0.03	0.03	0.00	0.00	0.00	0.00
Middle East																
Iran	0.08	0.08	0.08	0.08	2.44	2.44	2.44	2.44	0.20	0.20	0.20	0.20	0.00	0.00	0.00	0.00
Turkey	0.03	0.03	0.02	0.02	3.70	3.33	3.86	3.86	0.10	0.10	0.09	0.09	0.00	0.00	-0.02	-15.00
Others	0.29	0.30	0.31	0.31	1.92	1.92	1.95	1.92	0.55	0.57	0.60	0.59	-0.01	-2.17	0.02	3.89

World and Selected Countries and Regions

Table 12 Cottonseed Area, Yield, and Production

Country / Region	Area (Million hectares)				Yield (Metric tons per hectare)				Production (Million metric tons)				Change in Production			
	Prel.		2017/18 Proj.		Prel.		2017/18 Proj.		Prel.		2017/18 Proj.		From last month		From last year	
	2015/16	2016/17	Feb	Mar	2015/16	2016/17	Feb	Mar	2015/16	2016/17	Feb	Mar	MMT	Percent	MMT	Percent
World	29.99	29.02	32.75	32.88	1.19	1.35	1.36	1.37	35.81	39.13	44.58	44.99	0.41	0.92	5.86	14.98
United States	3.27	3.85	4.59	4.59	1.12	1.27	1.33	1.33	3.67	4.87	6.10	6.10	0.00	0.00	1.23	25.25
Total Foreign	26.72	25.17	28.16	28.28	1.20	1.36	1.37	1.37	32.14	34.26	38.48	38.89	0.41	1.07	4.63	13.52
South Asia																
India	12.30	10.85	12.30	12.30	0.89	1.06	0.98	0.98	11.00	11.46	12.10	12.10	0.00	0.00	0.64	5.56
Pakistan	2.80	2.40	2.80	2.80	1.09	1.40	1.29	1.29	3.05	3.35	3.60	3.60	0.00	0.00	0.25	7.46
China	3.05	2.90	3.40	3.40	2.82	3.03	3.18	3.18	8.60	8.80	10.80	10.80	0.00	0.00	2.00	22.73
Former Soviet Union - 12																
Uzbekistan	1.29	1.18	1.20	1.15	1.16	1.19	1.16	1.17	1.49	1.40	1.39	1.34	-0.04	-3.03	-0.06	-4.00
Turkmenistan	0.50	0.55	0.55	0.55	1.14	0.95	1.10	1.10	0.57	0.52	0.60	0.60	0.00	0.00	0.08	16.02
Tajikistan	0.15	0.17	0.18	0.18	1.08	1.02	0.94	1.03	0.16	0.17	0.17	0.18	0.02	9.09	0.01	7.14
Kazakhstan	0.10	0.12	0.13	0.13	0.80	0.97	1.00	1.00	0.08	0.11	0.13	0.13	0.00	0.00	0.01	11.61
South America																
Brazil	0.96	0.94	1.12	1.12	2.03	2.41	2.37	2.37	1.94	2.27	2.66	2.66	0.00	0.00	0.39	17.10
Argentina	0.38	0.24	0.40	0.36	0.81	1.16	0.86	0.86	0.31	0.28	0.34	0.31	-0.03	-9.59	0.03	11.87
Middle East																
Turkey	0.37	0.40	0.47	0.47	2.35	2.63	2.98	2.98	0.87	1.05	1.40	1.40	0.00	0.00	0.35	33.33
Syria	0.04	0.04	0.04	0.03	1.60	2.00	1.86	2.17	0.06	0.08	0.07	0.07	0.00	0.00	-0.02	-18.75
Iran	0.10	0.10	0.10	0.08	0.98	0.98	0.90	1.13	0.10	0.10	0.09	0.09	0.00	0.00	-0.01	-8.16
Australia	0.31	0.58	0.44	0.53	2.82	2.16	3.13	2.74	0.88	1.25	1.36	1.45	0.09	6.62	0.20	16.00
European Union	0.30	0.26	0.31	0.31	1.37	1.58	1.55	1.55	0.41	0.42	0.49	0.49	0.00	0.00	0.07	16.59
Africa																
Burkina	0.66	0.70	0.85	0.85	0.46	0.52	0.42	0.42	0.30	0.36	0.36	0.36	0.00	0.00	0.00	-0.83
Mali	0.55	0.66	0.73	0.73	0.51	0.54	0.52	0.52	0.28	0.35	0.38	0.38	0.00	0.00	0.03	8.83
Cameroon	0.22	0.23	0.23	0.23	1.17	1.04	1.11	1.11	0.26	0.24	0.25	0.25	0.00	0.00	0.02	6.38
Cote d'Ivoire	0.40	0.35	0.36	0.36	0.41	0.48	0.52	0.52	0.17	0.17	0.19	0.19	0.00	0.00	0.02	11.98
Benin	0.30	0.42	0.45	0.45	0.55	0.66	0.62	0.62	0.17	0.27	0.28	0.28	0.00	0.00	0.01	3.31
Tanzania	0.40	0.35	0.35	0.35	0.30	0.35	0.31	0.31	0.12	0.12	0.11	0.11	0.00	0.00	-0.01	-9.84
Egypt	0.10	0.06	0.09	0.09	0.98	0.96	1.00	1.00	0.10	0.05	0.09	0.09	0.00	0.00	0.04	71.70
Nigeria	0.26	0.28	0.27	0.27	0.38	0.36	0.38	0.38	0.10	0.10	0.10	0.10	0.00	0.00	0.00	3.03
Uganda	0.07	0.07	0.08	0.08	1.23	1.49	1.45	1.45	0.08	0.11	0.11	0.11	0.00	0.00	0.00	0.00
Zimbabwe	0.10	0.21	0.20	0.20	0.20	0.25	0.43	0.43	0.02	0.05	0.09	0.09	0.00	0.00	0.03	63.46
Sudan	0.06	0.10	0.07	0.18	1.74	2.15	1.24	2.52	0.11	0.21	0.09	0.46	0.38	433.33	0.26	125.24
Mexico	0.13	0.10	0.21	0.21	2.41	2.51	2.49	2.49	0.32	0.26	0.52	0.52	0.00	0.00	0.26	101.93
Burma	0.24	0.24	0.25	0.25	1.23	1.17	1.24	1.24	0.30	0.29	0.31	0.31	0.00	0.00	0.03	8.77
Others	0.60	0.71	0.61	0.64	0.54	0.61	0.69	0.67	0.32	0.43	0.42	0.43	0.01	1.18	-0.01	-1.61

World and Selected Countries and Regions

Table 13 Peanut Area, Yield, and Production

Country / Region	Area (Million hectares)				Yield (Metric tons per hectare)				Production (Million metric tons)				Change in Production			
	Prel.		2017/18 Proj.		Prel.		2017/18 Proj.		Prel.		2017/18 Proj.		From last month		From last year	
	2015/16	2016/17	Feb	Mar	2015/16	2016/17	Feb	Mar	2015/16	2016/17	Feb	Mar	MMT	Percent	MMT	Percent
World	24.76	25.30	25.32	25.37	1.63	1.70	1.74	1.75	40.42	43.05	44.12	44.45	0.33	0.75	1.40	3.25
United States	0.63	0.62	0.72	0.72	4.31	4.07	4.56	4.56	2.72	2.53	3.28	3.28	0.00	0.00	0.75	29.58
Total Foreign	24.13	24.67	24.60	24.65	1.56	1.64	1.66	1.67	37.70	40.52	40.84	41.17	0.33	0.81	0.65	1.60
China	4.62	4.73	4.85	4.90	3.56	3.66	3.61	3.63	16.44	17.29	17.50	17.80	0.30	1.71	0.51	2.95
Africa																
Nigeria	2.50	2.50	2.50	2.50	1.20	1.20	1.20	1.20	3.00	3.00	3.00	3.00	0.00	0.00	0.00	0.00
Sudan	2.18	1.80	1.80	1.80	0.86	0.78	0.78	0.78	1.87	1.40	1.40	1.40	0.00	0.00	0.00	0.00
Senegal	1.14	1.15	1.25	1.25	0.93	0.82	1.12	1.12	1.05	0.95	1.40	1.40	0.00	0.00	0.46	48.15
Cameroon	0.40	0.40	0.40	0.40	1.38	1.38	1.38	1.38	0.55	0.55	0.55	0.55	0.00	0.00	0.00	0.00
Ghana	0.40	0.40	0.40	0.40	1.10	1.10	1.10	1.10	0.44	0.44	0.44	0.44	0.00	0.00	0.00	0.00
Chad	0.50	0.50	0.50	0.50	0.80	0.80	0.80	0.80	0.40	0.40	0.40	0.40	0.00	0.00	0.00	0.00
Malawi	0.37	0.37	0.37	0.37	0.79	0.71	0.71	0.71	0.29	0.26	0.26	0.26	0.00	0.00	0.00	0.00
Congo (Kinshasa)	0.48	0.48	0.48	0.48	0.78	0.78	0.78	0.78	0.37	0.37	0.37	0.37	0.00	0.00	0.00	0.00
Niger	0.74	0.74	0.74	0.74	0.47	0.47	0.47	0.47	0.35	0.35	0.35	0.35	0.00	0.00	0.00	0.00
Mali	0.38	0.38	0.38	0.38	1.39	0.87	0.87	0.87	0.52	0.33	0.33	0.33	0.00	0.00	0.00	0.00
Uganda	0.43	0.43	0.43	0.43	0.71	0.71	0.71	0.71	0.30	0.30	0.30	0.30	0.00	0.00	0.00	0.00
Burkina	0.45	0.45	0.45	0.45	0.78	0.78	0.78	0.78	0.35	0.35	0.35	0.35	0.00	0.00	0.00	0.00
Guinea	0.30	0.30	0.30	0.30	1.17	1.20	1.20	1.20	0.35	0.36	0.36	0.36	0.00	0.00	0.00	0.00
Egypt	0.06	0.06	0.06	0.06	3.20	3.20	3.20	3.20	0.21	0.21	0.21	0.21	0.00	0.00	0.00	0.00
Central African Republic	0.10	0.10	0.10	0.10	1.50	1.50	1.50	1.50	0.15	0.15	0.15	0.15	0.00	0.00	0.00	0.00
South Africa	0.02	0.06	0.06	0.06	1.04	2.20	1.64	2.18	0.02	0.12	0.09	0.12	0.03	33.33	0.00	-2.44
Mozambique	0.29	0.29	0.29	0.29	0.38	0.38	0.38	0.38	0.11	0.11	0.11	0.11	0.00	0.00	0.00	0.00
Cote d'Ivoire	0.08	0.08	0.08	0.08	1.13	1.13	1.13	1.13	0.09	0.09	0.09	0.09	0.00	0.00	0.00	0.00
Benin	0.16	0.15	0.15	0.15	0.85	0.93	0.93	0.93	0.13	0.14	0.14	0.14	0.00	0.00	0.00	0.00
South Asia																
India	4.55	5.30	5.00	5.00	0.98	1.26	1.30	1.30	4.47	6.70	6.50	6.50	0.00	0.00	-0.20	-2.99
Pakistan	0.11	0.09	0.10	0.10	0.90	0.94	0.95	0.95	0.10	0.09	0.09	0.09	0.00	0.00	0.01	5.88
Southeast Asia																
Indonesia	0.62	0.60	0.59	0.59	1.84	1.87	1.86	1.86	1.13	1.12	1.10	1.10	0.00	0.00	-0.02	-1.79
Burma	0.89	0.89	0.89	0.89	1.55	1.55	1.55	1.55	1.38	1.38	1.38	1.38	0.00	0.00	0.00	0.00
Vietnam	0.19	0.20	0.20	0.20	2.31	2.31	2.33	2.33	0.44	0.45	0.47	0.47	0.00	0.00	0.01	3.10
Thailand	0.02	0.02	0.02	0.02	1.63	1.67	1.67	1.67	0.04	0.04	0.04	0.04	0.00	0.00	0.00	0.00
South America																
Argentina	0.29	0.32	0.37	0.37	3.21	3.98	3.14	3.14	0.93	1.29	1.16	1.16	0.00	0.00	-0.13	-9.94
Brazil	0.12	0.13	0.13	0.13	3.38	3.61	3.50	3.50	0.41	0.47	0.46	0.46	0.00	0.00	-0.01	-1.50
Mexico	0.07	0.06	0.06	0.06	1.60	1.71	1.70	1.70	0.11	0.10	0.10	0.10	0.00	0.00	0.00	1.04
Others	1.70	1.72	1.68	1.68	1.01	1.01	1.05	1.05	1.71	1.74	1.77	1.77	0.00	0.00	0.02	1.32

World and Selected Countries and Regions

Table 14 Sunflowerseed Area, Yield, and Production

Country / Region	Area (Million hectares)				Yield (Metric tons per hectare)				Production (Million metric tons)				Change in Production			
	Prel.		2017/18 Proj.		Prel.		2017/18 Proj.		Prel.		2017/18 Proj.		From last month		From last year	
	2015/16	2016/17	Feb	Mar	2015/16	2016/17	Feb	Mar	2015/16	2016/17	Feb	Mar	MMT	Percent	MMT	Percent
World	23.29	25.31	25.23	25.53	1.73	1.89	1.81	1.81	40.30	47.80	45.77	46.11	0.35	0.75	-1.69	-3.53
United States	0.73	0.62	0.54	0.54	1.82	1.94	1.81	1.81	1.33	1.20	0.98	0.98	0.00	0.00	-0.22	-18.20
Total Foreign	22.56	24.69	24.68	24.99	1.73	1.89	1.81	1.81	38.97	46.60	44.78	45.13	0.35	0.77	-1.47	-3.15
Former Soviet Union - 12																
Russia	6.45	7.18	7.10	7.15	1.42	1.51	1.48	1.45	9.17	10.86	10.50	10.36	-0.14	-1.31	-0.50	-4.57
Ukraine	5.50	6.40	6.40	6.40	2.16	2.38	2.03	2.03	11.90	15.20	13.00	13.00	0.00	0.00	-2.20	-14.47
Kazakhstan	0.70	0.81	0.80	0.88	0.76	0.94	0.94	1.02	0.53	0.76	0.75	0.90	0.15	20.40	0.15	19.60
European Union	4.17	4.15	4.37	4.37	1.85	2.06	2.13	2.13	7.72	8.57	9.30	9.30	0.00	0.00	0.73	8.48
South America																
Argentina	1.27	1.72	1.71	1.71	2.13	1.98	2.11	2.11	2.70	3.40	3.60	3.60	0.00	0.00	0.20	5.88
Uruguay	0.04	0.04	0.05	0.05	1.50	1.50	1.56	1.56	0.06	0.07	0.08	0.08	0.00	0.00	0.01	18.18
Bolivia	0.15	0.10	0.13	0.13	0.89	0.67	0.80	0.80	0.13	0.06	0.11	0.11	0.00	0.00	0.04	64.06
Brazil	0.05	0.06	0.06	0.06	1.22	1.65	1.56	1.56	0.06	0.10	0.10	0.10	0.00	0.00	-0.01	-5.77
Paraguay	0.05	0.03	0.03	0.03	1.64	1.60	1.66	1.66	0.07	0.05	0.05	0.05	0.00	0.00	0.01	10.42
China	1.04	1.15	1.10	1.25	2.60	2.59	2.59	2.50	2.70	2.99	2.85	3.12	0.27	9.47	0.13	4.35
South Asia																
India	0.48	0.38	0.33	0.33	0.66	0.72	0.84	0.84	0.32	0.28	0.28	0.28	0.00	0.00	0.00	0.73
Pakistan	0.09	0.07	0.07	0.07	1.06	1.07	1.07	1.07	0.09	0.08	0.08	0.08	0.00	0.00	0.00	0.00
Middle East																
Turkey	0.55	0.60	0.65	0.65	2.00	2.20	2.46	2.46	1.10	1.32	1.60	1.60	0.00	0.00	0.28	21.21
Iran	0.07	0.07	0.07	0.07	1.29	1.29	1.29	1.29	0.09	0.09	0.09	0.09	0.00	0.00	0.00	0.00
Israel	0.01	0.01	0.01	0.01	1.60	1.60	1.60	1.60	0.02	0.02	0.02	0.02	0.00	0.00	0.00	0.00
Africa																
Egypt	0.01	0.01	0.01	0.01	2.43	2.43	2.38	2.38	0.02	0.02	0.02	0.02	0.00	0.00	0.00	11.76
Morocco	0.02	0.02	0.02	0.02	1.29	1.29	1.29	1.29	0.03	0.03	0.03	0.03	0.00	0.00	0.00	0.00
South Africa	0.72	0.64	0.56	0.59	1.05	1.38	1.21	1.26	0.76	0.88	0.68	0.74	0.06	8.89	-0.14	-16.00
Burma	0.60	0.60	0.60	0.60	0.65	0.65	0.65	0.65	0.39	0.39	0.39	0.39	0.00	0.00	0.00	0.00
Canada	0.04	0.03	0.03	0.03	1.92	1.82	2.23	2.23	0.07	0.05	0.06	0.06	0.00	0.00	0.01	13.73
Australia	0.02	0.03	0.03	0.03	1.09	1.33	1.19	1.24	0.03	0.04	0.03	0.03	0.00	0.00	-0.01	-13.89
Others	0.55	0.61	0.56	0.56	1.87	2.25	2.13	2.13	1.02	1.37	1.19	1.19	0.00	0.00	-0.18	-12.81

World and Selected Countries and Regions

Table 15 Rapeseed Area, Yield, and Production

Country / Region	Area (Million hectares)				Yield (Metric tons per hectare)				Production (Million metric tons)				Change in Production			
	Prel.		2017/18 Proj.		Prel.		2017/18 Proj.		Prel.		2017/18 Proj.		From last month		From last year	
	2015/16	2016/17	Feb	Mar	2015/16	2016/17	Feb	Mar	2015/16	2016/17	Feb	Mar	MMT	Percent	MMT	Percent
World	33.86	33.83	35.72	35.44	2.07	2.11	2.05	2.09	69.96	71.28	73.10	73.95	0.85	1.16	2.67	3.74
United States	0.69	0.69	0.81	0.81	1.88	2.04	1.75	1.75	1.31	1.41	1.42	1.42	0.00	0.00	0.02	1.06
Total Foreign	33.17	33.14	34.91	34.63	2.07	2.11	2.05	2.09	68.66	69.87	71.67	72.53	0.85	1.19	2.65	3.79
European Union	6.51	6.55	6.76	6.76	3.38	3.13	3.27	3.27	22.00	20.54	22.10	22.10	0.00	0.00	1.56	7.58
Canada	8.32	8.12	9.26	9.26	2.21	2.41	2.32	2.32	18.38	19.60	21.50	21.50	0.00	0.00	1.90	9.69
China	7.53	7.33	6.80	7.20	1.98	1.98	1.93	2.00	14.93	14.55	13.10	14.40	1.30	9.92	-0.15	-1.00
South Asia																
India	5.75	6.07	6.50	5.70	1.03	1.17	1.00	1.00	5.92	7.09	6.50	5.70	-0.80	-12.31	-1.39	-19.62
Pakistan	0.23	0.21	0.20	0.20	0.96	0.95	0.95	0.95	0.22	0.20	0.19	0.19	0.00	0.00	-0.01	-5.00
Bangladesh	0.25	0.25	0.25	0.25	0.92	0.92	0.92	0.92	0.23	0.23	0.23	0.23	0.00	0.00	0.00	0.00
Former Soviet Union - 12																
Russia	0.90	0.91	0.95	0.95	1.12	1.10	1.58	1.58	1.00	1.00	1.50	1.50	0.00	-0.20	0.50	50.15
Ukraine	0.68	0.45	0.79	0.79	2.58	2.78	2.79	2.79	1.74	1.25	2.21	2.21	0.00	0.00	0.96	76.56
Belarus	0.24	0.21	0.17	0.17	1.57	1.24	1.82	1.82	0.38	0.26	0.30	0.30	0.00	0.00	0.04	15.38
Kazakhstan	0.22	0.16	0.23	0.25	0.62	1.06	1.00	1.11	0.14	0.17	0.23	0.28	0.05	24.00	0.11	64.12
Australia	2.09	2.50	2.60	2.70	1.33	1.64	1.12	1.19	2.78	4.10	2.90	3.20	0.30	10.34	-0.90	-21.95
South America																
Chile	0.05	0.05	0.05	0.05	4.00	3.98	4.14	4.14	0.21	0.18	0.21	0.21	0.00	0.00	0.02	13.11
Paraguay	0.09	0.03	0.04	0.04	1.00	2.00	1.50	1.50	0.09	0.05	0.06	0.06	0.00	0.00	0.01	20.00
Switzerland	0.02	0.02	0.02	0.02	3.14	3.14	3.14	3.14	0.07	0.07	0.07	0.07	0.00	0.00	0.00	0.00
Ethiopia	0.05	0.05	0.05	0.05	1.56	1.56	1.56	1.56	0.07	0.07	0.07	0.07	0.00	0.00	0.00	0.00
Others	0.25	0.25	0.25	0.25	2.05	2.10	2.10	2.10	0.50	0.52	0.52	0.52	0.00	0.00	0.00	0.19

World and Selected Countries and Regions

Table 16 Copra, Palm Kernel, and Palm Oil Production

Country / Region	Production (Million metric tons)				Change in Production			
	2015/16	Prel.	2017/18 Proj.		From last month		From last year	
		2016/17	Feb	Mar	MMT	Percent	MMT	Percent
Oilseed, Copra								
Philippines	2.10	2.20	2.30	2.30	0.00	0.00	0.10	4.55
Indonesia	1.59	1.58	1.57	1.57	0.00	0.00	-0.01	-0.63
India	0.72	0.72	0.75	0.75	0.00	0.00	0.03	4.17
Vietnam	0.26	0.27	0.27	0.27	0.00	0.00	0.00	0.00
Mexico	0.21	0.21	0.21	0.21	0.00	0.00	0.00	0.00
Papua New Guinea	0.09	0.10	0.10	0.10	0.00	0.00	0.00	0.00
Thailand	0.07	0.07	0.07	0.07	0.00	0.00	0.00	0.00
Sri Lanka	0.07	0.07	0.07	0.07	0.00	0.00	0.00	0.00
Solomon Islands	0.03	0.03	0.03	0.03	0.00	0.00	0.00	0.00
Cote d'Ivoire	0.03	0.03	0.03	0.03	0.00	0.00	0.00	0.00
World	5.32	5.41	5.54	5.54	0.00	0.00	0.13	2.40
Oilseed, Palm Kernel								
Indonesia	8.50	9.50	10.20	10.20	0.00	0.00	0.70	7.37
Malaysia	4.50	4.78	5.20	5.20	0.00	0.00	0.42	8.79
Thailand	0.68	0.75	0.82	0.82	0.00	0.00	0.07	9.33
Nigeria	0.73	0.73	0.73	0.73	0.00	0.00	0.00	0.00
Colombia	0.27	0.24	0.33	0.33	0.00	0.00	0.09	37.50
Guatemala	0.13	0.15	0.15	0.15	0.00	0.00	0.00	0.00
Papua New Guinea	0.15	0.13	0.14	0.14	0.00	0.00	0.01	7.69
Honduras	0.12	0.12	0.12	0.12	0.00	0.00	0.00	0.00
Cameroon	0.11	0.11	0.11	0.11	0.00	0.00	0.00	0.00
Ecuador	0.10	0.11	0.12	0.12	0.00	0.00	0.01	9.09
World	15.96	17.30	18.59	18.59	0.00	0.00	1.29	7.46
Oil, Palm								
Indonesia	32.00	36.00	38.50	38.50	0.00	0.00	2.50	6.94
Malaysia	17.70	18.86	20.50	20.50	0.00	0.00	1.64	8.70
Thailand	1.80	2.50	2.70	2.70	0.00	0.00	0.20	8.00
Colombia	1.28	1.15	1.63	1.63	0.00	0.00	0.48	41.74
Nigeria	0.97	0.97	0.97	0.97	0.00	0.00	0.00	0.00
Guatemala	0.63	0.74	0.74	0.74	0.00	0.00	0.00	0.00
Ecuador	0.52	0.57	0.59	0.59	0.00	0.00	0.03	5.36
Honduras	0.49	0.55	0.55	0.55	0.00	0.00	0.00	0.00
Papua New Guinea	0.58	0.52	0.53	0.53	0.00	0.00	0.01	1.92
Ghana	0.50	0.52	0.52	0.52	0.00	0.00	0.00	0.00
World	58.90	64.87	69.77	69.77	0.00	0.00	4.90	7.55

World and Selected Countries and Regions

Table 17 Cotton Area, Yield, and Production

Country / Region	Area (Million hectares)				Yield (Kilograms per hectare)				Production (Million 480 lb. bales)				Change in Production			
	2015/16	Prel. 2016/17	2017/18 Proj.		2015/16	Prel. 2016/17	2017/18 Proj.		2015/16	Prel. 2016/17	2017/18 Proj.		From last month		From last year	
			Feb	Mar			Feb	Mar			Feb	Mar	MBales	Percent	MBales	Percent
World	30.65	29.68	33.39	33.51	683	783	792	792	96.20	106.80	121.37	121.94	0.57	0.47	15.14	14.18
United States	3.27	3.85	4.59	4.59	859	972	1,008	997	12.89	17.17	21.26	21.03	-0.23	-1.10	3.86	22.48
Total Foreign	27.38	25.83	28.79	28.92	663	755	757	760	83.31	89.63	100.11	100.91	0.80	0.80	11.28	12.59
South Asia																
India	12.30	10.85	12.30	12.30	458	542	504	504	25.90	27.00	28.50	28.50	0.00	0.00	1.50	5.56
Pakistan	2.80	2.40	2.80	2.80	544	699	638	638	7.00	7.70	8.20	8.20	0.00	0.00	0.50	6.49
China	3.05	2.90	3.40	3.40	1,570	1,708	1,761	1,761	22.00	22.75	27.50	27.50	0.00	0.00	4.75	20.88
South America																
Brazil	0.96	0.94	1.12	1.12	1,345	1,621	1,555	1,555	5.90	7.00	8.00	8.00	0.00	0.00	1.00	14.29
Argentina	0.38	0.24	0.40	0.36	479	680	506	508	0.83	0.75	0.93	0.84	-0.09	-9.68	0.09	12.00
Paraguay	0.01	0.01	0.01	0.01	419	416	416	416	0.03	0.02	0.02	0.02	0.00	0.00	0.00	0.00
Africa																
Burkina	0.66	0.70	0.85	0.85	363	407	333	333	1.10	1.31	1.30	1.30	0.00	0.00	-0.01	-0.76
Mali	0.55	0.66	0.73	0.73	390	412	403	403	0.98	1.24	1.35	1.35	0.00	0.00	0.11	8.87
Cote d'Ivoire	0.40	0.35	0.36	0.36	333	394	421	421	0.62	0.63	0.70	0.70	0.00	0.00	0.08	12.00
Benin	0.30	0.42	0.45	0.45	363	433	423	423	0.50	0.83	0.88	0.88	0.00	0.00	0.05	6.06
Egypt	0.10	0.06	0.09	0.09	697	673	718	718	0.32	0.17	0.30	0.30	0.00	0.00	0.13	76.47
Cameroon	0.22	0.23	0.23	0.23	510	455	484	484	0.52	0.47	0.50	0.50	0.00	0.00	0.03	6.38
Tanzania	0.40	0.35	0.35	0.35	147	174	156	156	0.27	0.28	0.25	0.25	0.00	0.00	-0.03	-10.71
Nigeria	0.26	0.28	0.27	0.27	193	182	190	190	0.23	0.23	0.24	0.24	0.00	0.00	0.01	2.17
Zimbabwe	0.10	0.21	0.20	0.20	115	146	245	245	0.05	0.14	0.23	0.23	0.00	0.00	0.09	64.23
Ethiopia	0.07	0.08	0.06	0.06	586	550	635	635	0.18	0.21	0.18	0.18	0.00	0.00	-0.03	-15.46
Former Soviet Union - 12																
Uzbekistan	1.29	1.18	1.20	1.15	644	687	671	678	3.80	3.73	3.70	3.58	-0.12	-3.24	-0.15	-3.89
Turkmenistan	0.50	0.55	0.55	0.55	631	529	569	543	1.45	1.33	1.43	1.36	-0.07	-4.56	0.04	2.64
Tajikistan	0.15	0.17	0.18	0.18	599	567	622	684	0.41	0.43	0.50	0.55	0.05	10.00	0.12	27.91
Kazakhstan	0.10	0.12	0.13	0.13	440	568	505	505	0.20	0.30	0.29	0.29	0.00	0.00	-0.01	-3.33
Middle East																
Turkey	0.37	0.40	0.47	0.47	1,559	1,742	1,853	1,853	2.65	3.20	4.00	4.00	0.00	0.00	0.80	25.00
Syria	0.04	0.04	0.04	0.03	1,034	1,089	995	1,161	0.19	0.20	0.16	0.16	0.00	0.00	-0.04	-20.00
Iran	0.10	0.10	0.10	0.09	599	653	610	704	0.28	0.30	0.28	0.28	-0.01	-1.79	-0.03	-8.33
Australia	0.31	0.58	0.44	0.53	1,989	1,520	2,202	1,931	2.85	4.05	4.40	4.70	0.30	6.82	0.65	16.05
Mexico	0.13	0.10	0.21	0.21	1,544	1,615	1,597	1,597	0.94	0.76	1.54	1.54	0.00	0.00	0.78	101.57
Burma	0.24	0.24	0.25	0.25	651	634	634	634	0.72	0.71	0.73	0.73	0.00	0.00	0.02	2.11
Others	1.61	1.71	1.63	1.77	464	497	538	586	3.43	3.91	4.03	4.76	0.73	18.10	0.85	21.79

World and Selected Countries and Regions

TABLE 18

The table below presents a record of the March projection and the final Estimate. Using world wheat production as an example, the "root mean square error" means that chances are 2 out of 3 that the current forecast will not be above or below the final estimate by more than 0.6 percent. Chances are 9 out of 10 (90% confidence level) that the difference will not exceed 1 percent. The average difference between the March projection and the final estimate is 2.4 million tons, ranging from 0 million to 8 million tons. The March projection has been below the estimate 27 times and above 9 times.

RELIABILITY OF PRODUCTION PROJECTIONS 1/

COMMODITY AND REGION	Root mean square error	90 percent confidence interval	Difference between forecast and final estimate					
			Average	Smallest	Largest	Years		
						Below final	Above final	
<i>WHEAT</i>	Percent		---Million metric tons---					
	World	0.6	1.0	2.4	0.0	8.0	27	9
	U.S.	0.2	0.3	0.1	0.0	0.3	15	10
	Foreign	0.7	1.1	2.4	0.1	8.0	27	9
<i>COARSE GRAINS 2/</i>	World	1.1	1.9	9.6	0.5	23.6	30	6
	U.S.	0.2	0.3	0.1	0.0	1.3	16	7
	Foreign	1.6	2.7	9.6	0.5	23.6	30	6
<i>RICE (Milled)</i>	World	1.3	2.3	3.5	0.2	13.8	27	9
	U.S.	1.3	2.2	0.0	0.0	0.2	11	6
	Foreign	1.4	2.3	3.5	0.1	13.8	27	9
<i>SOYBEANS</i>	World	2.3	3.9	3.4	0.1	12.4	20	16
	U.S.	1.3	2.3	0.6	0.0	2.5	15	14
	Foreign	3.8	6.5	3.4	0.1	12.6	20	16
<i>COTTON</i>	---Million 480-lb. bales---							
	World	1.8	3.1	1.3	0.0	5.2	22	12
	U.S.	1.0	1.7	0.1	0.0	0.3	13	22
	Foreign	2.2	3.7	1.3	0.0	5.3	22	13
UNITED STATES	-----Million bushels-----							
<i>CORN</i>	0.2	0.3	2	0	38	1	2	
<i>SORGHUM</i>	0.1	0.2	0	0	4	0	2	
<i>BARLEY</i>	0.8	1.3	1	0	11	16	4	
<i>OATS</i>	0.3	0.6	0	0	2	4	4	

1/ Marketing years 1981/82 through 2016/17. Final for grains, soybeans and cotton is defined as the first November estimates following the marketing year for 1981/82 through 2015/16, and for 2016/17 last month's estimate.

2/ Includes corn, sorghum, barley, oats, rye, millet, and mixed grain

March 2018

Office of Global Analysis, FAS, USDA